



Full wwPDB X-ray Structure Validation Report ⓘ

Sep 17, 2023 – 06:46 PM EDT

PDB ID : 4ZJS
Title : Crystal structure of a chimeric acetylcholine binding protein from *Aplysia Californica* (Ac-AChBP) containing the main immunogenic region (MIR) from the human alpha 1 subunit of the muscle nicotinic acetylcholine receptor in complex with anatoxin-A.
Authors : Talley, T.T.; Bobango, J.; Wu, J.; Park, J.F.; Luo, J.; Lindsatrom, J.; Taylor, P.
Deposited on : 2015-04-29
Resolution : 2.23 Å(reported)

This is a Full wwPDB X-ray Structure Validation Report for a publicly released PDB entry.

We welcome your comments at validation@mail.wwpdb.org

A user guide is available at

<https://www.wwpdb.org/validation/2017/XrayValidationReportHelp>

with specific help available everywhere you see the ⓘ symbol.

The types of validation reports are described at

<http://www.wwpdb.org/validation/2017/FAQs#types>.

The following versions of software and data (see [references ⓘ](#)) were used in the production of this report:

MolProbity : 4.02b-467
Mogul : 1.8.5 (274361), CSD as541be (2020)
Xtriage (Phenix) : 1.13
EDS : 2.35.1
Percentile statistics : 20191225.v01 (using entries in the PDB archive December 25th 2019)
Refmac : 5.8.0158
CCP4 : 7.0.044 (Gargrove)
Ideal geometry (proteins) : Engh & Huber (2001)
Ideal geometry (DNA, RNA) : Parkinson et al. (1996)

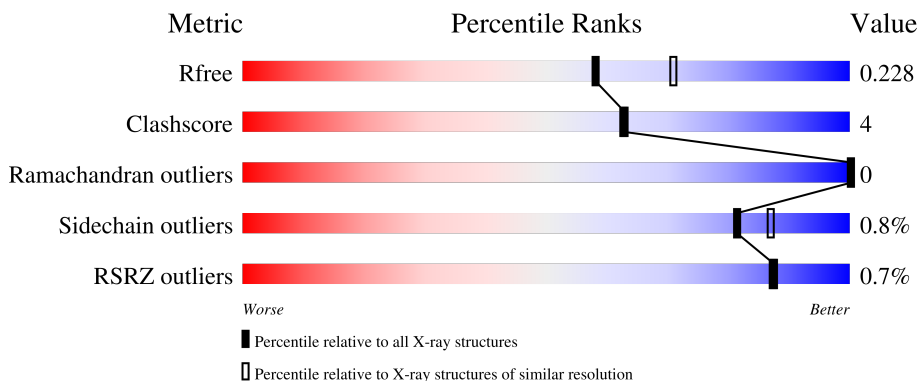
1 Overall quality at a glance

The following experimental techniques were used to determine the structure:

X-RAY DIFFRACTION

The reported resolution of this entry is 2.23 Å.

Percentile scores (ranging between 0-100) for global validation metrics of the entry are shown in the following graphic. The table shows the number of entries on which the scores are based.




Metric	Whole archive (#Entries)	Similar resolution (#Entries, resolution range(Å))
R_{free}	130704	2391 (2.26-2.22)
Clashscore	141614	2539 (2.26-2.22)
Ramachandran outliers	138981	2489 (2.26-2.22)
Sidechain outliers	138945	2490 (2.26-2.22)
RSRZ outliers	127900	2353 (2.26-2.22)

The table below summarises the geometric issues observed across the polymeric chains and their fit to the electron density. The red, orange, yellow and green segments of the lower bar indicate the fraction of residues that contain outliers for ≥ 3 , 2, 1 and 0 types of geometric quality criteria respectively. A grey segment represents the fraction of residues that are not modelled. The numeric value for each fraction is indicated below the corresponding segment, with a dot representing fractions $\leq 5\%$. The upper red bar (where present) indicates the fraction of residues that have poor fit to the electron density. The numeric value is given above the bar.

Mol	Chain	Length	Quality of chain
1	A	230	 77% 12% 10%
1	B	230	 81% 8% 10%
1	C	230	 79% 10% 11%
1	D	230	 79% 10% 10%

Continued on next page...

Continued from previous page...

Mol	Chain	Length	Quality of chain
1	E	230	 <p>A horizontal bar chart representing the quality of chain. The bar is divided into three segments: a green segment representing 83%, a yellow segment representing 7%, and a grey segment representing 11%. A small red square is visible at the beginning of the bar, and a '%' symbol is positioned above the start of the bar.</p>

2 Entry composition [i](#)

There are 3 unique types of molecules in this entry. The entry contains 8261 atoms, of which 0 are hydrogens and 0 are deuteriums.

In the tables below, the ZeroOcc column contains the number of atoms modelled with zero occupancy, the AltConf column contains the number of residues with at least one atom in alternate conformation and the Trace column contains the number of residues modelled with at most 2 atoms.

- Molecule 1 is a protein called Acetylcholine receptor subunit alpha,Soluble acetylcholine receptor,Acetylcholine receptor subunit alpha,Soluble acetylcholine receptor.

Mol	Chain	Residues	Atoms					ZeroOcc	AltConf	Trace
			Total	C	N	O	S			
1	A	206	Total 1607	C 1022	N 263	O 316	S 6	0	0	0
1	B	206	Total 1619	C 1030	N 266	O 317	S 6	0	0	0
1	C	205	Total 1627	C 1036	N 264	O 321	S 6	0	0	0
1	D	206	Total 1613	C 1027	N 263	O 317	S 6	0	0	0
1	E	205	Total 1578	C 1007	N 254	O 311	S 6	0	0	0

There are 55 discrepancies between the modelled and reference sequences:

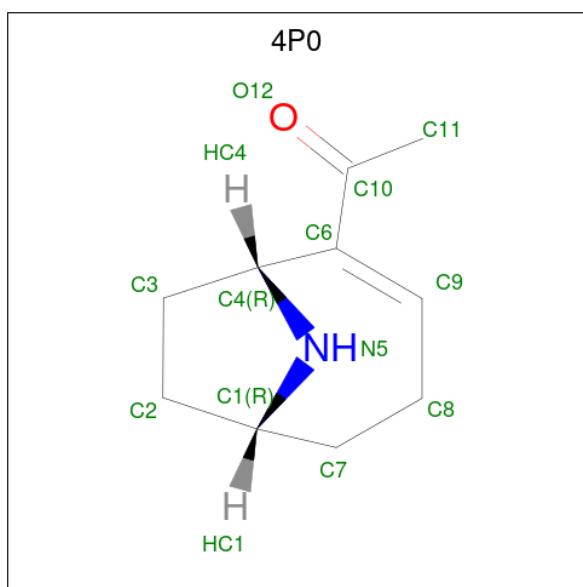
Chain	Residue	Modelled	Actual	Comment	Reference
A	-8	ASP	-	expression tag	UNP P02708
A	-7	TYR	-	expression tag	UNP P02708
A	-6	LYS	-	expression tag	UNP P02708
A	-5	ASP	-	expression tag	UNP P02708
A	-4	ASP	-	expression tag	UNP P02708
A	-3	ASP	-	expression tag	UNP P02708
A	-2	ASP	-	expression tag	UNP P02708
A	-1	LYS	-	expression tag	UNP P02708
A	0	LEU	-	expression tag	UNP P02708
A	220	SER	-	cloning artifact	UNP Q8WSF8
A	221	ARG	-	cloning artifact	UNP Q8WSF8
B	-8	ASP	-	expression tag	UNP P02708
B	-7	TYR	-	expression tag	UNP P02708
B	-6	LYS	-	expression tag	UNP P02708
B	-5	ASP	-	expression tag	UNP P02708
B	-4	ASP	-	expression tag	UNP P02708
B	-3	ASP	-	expression tag	UNP P02708
B	-2	ASP	-	expression tag	UNP P02708

Continued on next page...

Continued from previous page...

Chain	Residue	Modelled	Actual	Comment	Reference
B	-1	LYS	-	expression tag	UNP P02708
B	0	LEU	-	expression tag	UNP P02708
B	220	SER	-	cloning artifact	UNP Q8WSF8
B	221	ARG	-	cloning artifact	UNP Q8WSF8
C	-8	ASP	-	expression tag	UNP P02708
C	-7	TYR	-	expression tag	UNP P02708
C	-6	LYS	-	expression tag	UNP P02708
C	-5	ASP	-	expression tag	UNP P02708
C	-4	ASP	-	expression tag	UNP P02708
C	-3	ASP	-	expression tag	UNP P02708
C	-2	ASP	-	expression tag	UNP P02708
C	-1	LYS	-	expression tag	UNP P02708
C	0	LEU	-	expression tag	UNP P02708
C	220	SER	-	cloning artifact	UNP Q8WSF8
C	221	ARG	-	cloning artifact	UNP Q8WSF8
D	-8	ASP	-	expression tag	UNP P02708
D	-7	TYR	-	expression tag	UNP P02708
D	-6	LYS	-	expression tag	UNP P02708
D	-5	ASP	-	expression tag	UNP P02708
D	-4	ASP	-	expression tag	UNP P02708
D	-3	ASP	-	expression tag	UNP P02708
D	-2	ASP	-	expression tag	UNP P02708
D	-1	LYS	-	expression tag	UNP P02708
D	0	LEU	-	expression tag	UNP P02708
D	220	SER	-	cloning artifact	UNP Q8WSF8
D	221	ARG	-	cloning artifact	UNP Q8WSF8
E	-8	ASP	-	expression tag	UNP P02708
E	-7	TYR	-	expression tag	UNP P02708
E	-6	LYS	-	expression tag	UNP P02708
E	-5	ASP	-	expression tag	UNP P02708
E	-4	ASP	-	expression tag	UNP P02708
E	-3	ASP	-	expression tag	UNP P02708
E	-2	ASP	-	expression tag	UNP P02708
E	-1	LYS	-	expression tag	UNP P02708
E	0	LEU	-	expression tag	UNP P02708
E	220	SER	-	cloning artifact	UNP Q8WSF8
E	221	ARG	-	cloning artifact	UNP Q8WSF8

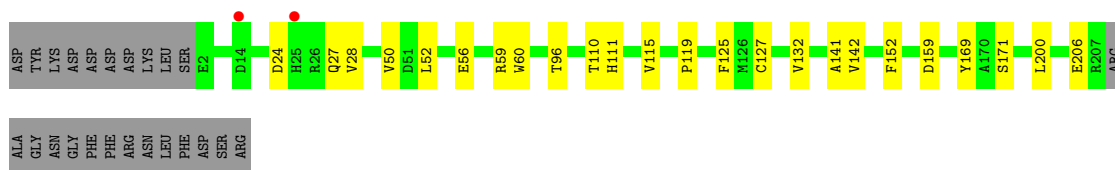
- Molecule 2 is 1-[(1R,6R)-9-azabicyclo[4.2.1]non-2-en-2-yl]ethanone (three-letter code: 4P0) (formula: C₁₀H₁₅NO).



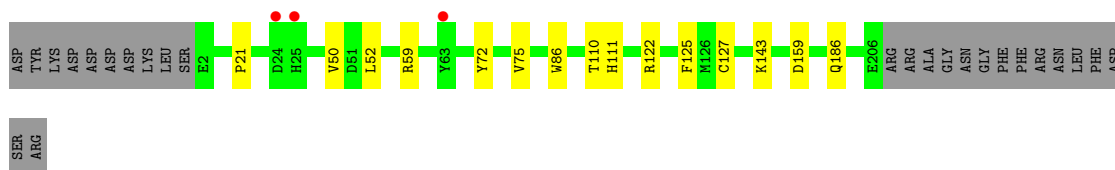
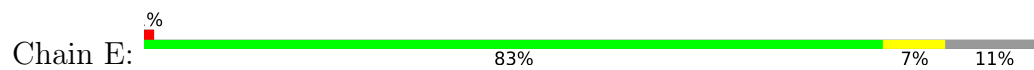
Mol	Chain	Residues	Atoms				ZeroOcc	AltConf
2	B	1	Total	C	N	O	0	0
			12	10	1	1		
2	D	1	Total	C	N	O	0	0
			12	10	1	1		
2	E	1	Total	C	N	O	0	0
			12	10	1	1		

- Molecule 3 is water.

Mol	Chain	Residues	Atoms		ZeroOcc	AltConf
3	A	27	Total	O	0	0
			27	27		
3	B	45	Total	O	0	0
			45	45		
3	C	40	Total	O	0	0
			40	40		
3	D	29	Total	O	0	0
			29	29		
3	E	40	Total	O	0	0
			40	40		



- Molecule 1: Acetylcholine receptor subunit alpha,Soluble acetylcholine receptor,Acetylcholine receptor subunit alpha,Soluble acetylcholine receptor



SER
ARG

4 Data and refinement statistics

Property	Value	Source
Space group	I 2 3	Depositor
Cell constants a, b, c, α , β , γ	207.60Å 207.60Å 207.60Å 90.00° 90.00° 90.00°	Depositor
Resolution (Å)	48.93 – 2.23 48.93 – 2.23	Depositor EDS
% Data completeness (in resolution range)	99.7 (48.93-2.23) 92.1 (48.93-2.23)	Depositor EDS
R_{merge}	0.19	Depositor
R_{sym}	(Not available)	Depositor
$\langle I/\sigma(I) \rangle$ ¹	1.83 (at 2.22Å)	Xtrriage
Refinement program	PHENIX	Depositor
R, R_{free}	0.197 , 0.228 0.198 , 0.228	Depositor DCC
R_{free} test set	2003 reflections (2.78%)	wwPDB-VP
Wilson B-factor (Å ²)	33.8	Xtrriage
Anisotropy	0.000	Xtrriage
Bulk solvent k_{sol} (e/Å ³), B_{sol} (Å ²)	0.34 , 28.2	EDS
L-test for twinning ²	$\langle L \rangle = 0.49$, $\langle L^2 \rangle = 0.32$	Xtrriage
Estimated twinning fraction	0.025 for -l,-k,-h	Xtrriage
F_o, F_c correlation	0.95	EDS
Total number of atoms	8261	wwPDB-VP
Average B, all atoms (Å ²)	36.0	wwPDB-VP

Xtrriage's analysis on translational NCS is as follows: *The largest off-origin peak in the Patterson function is 1.86% of the height of the origin peak. No significant pseudotranslation is detected.*

¹Intensities estimated from amplitudes.

²Theoretical values of $\langle |L| \rangle$, $\langle L^2 \rangle$ for acentric reflections are 0.5, 0.333 respectively for untwinned datasets, and 0.375, 0.2 for perfectly twinned datasets.

5 Model quality [i](#)

5.1 Standard geometry [i](#)

Bond lengths and bond angles in the following residue types are not validated in this section: 4P0

The Z score for a bond length (or angle) is the number of standard deviations the observed value is removed from the expected value. A bond length (or angle) with $|Z| > 5$ is considered an outlier worth inspection. RMSZ is the root-mean-square of all Z scores of the bond lengths (or angles).

Mol	Chain	Bond lengths		Bond angles	
		RMSZ	# Z >5	RMSZ	# Z >5
1	A	0.38	0/1648	0.53	0/2259
1	B	0.40	0/1660	0.53	0/2272
1	C	0.40	0/1667	0.57	0/2277
1	D	0.39	0/1654	0.55	0/2265
1	E	0.39	0/1618	0.52	0/2221
All	All	0.39	0/8247	0.54	0/11294

There are no bond length outliers.

There are no bond angle outliers.

There are no chirality outliers.

There are no planarity outliers.

5.2 Too-close contacts [i](#)

In the following table, the Non-H and H(model) columns list the number of non-hydrogen atoms and hydrogen atoms in the chain respectively. The H(added) column lists the number of hydrogen atoms added and optimized by MolProbity. The Clashes column lists the number of clashes within the asymmetric unit, whereas Symm-Clashes lists symmetry-related clashes.

Mol	Chain	Non-H	H(model)	H(added)	Clashes	Symm-Clashes
1	A	1607	0	1498	19	0
1	B	1619	0	1526	11	0
1	C	1627	0	1543	17	0
1	D	1613	0	1515	12	0
1	E	1578	0	1463	8	0
2	B	12	0	15	3	0
2	D	12	0	15	1	0
2	E	12	0	15	1	0

Continued on next page...

Continued from previous page...

Mol	Chain	Non-H	H(model)	H(added)	Clashes	Symm-Clashes
3	A	27	0	0	0	0
3	B	45	0	0	0	0
3	C	40	0	0	0	0
3	D	29	0	0	0	0
3	E	40	0	0	0	0
All	All	8261	0	7590	67	0

The all-atom clashscore is defined as the number of clashes found per 1000 atoms (including hydrogen atoms). The all-atom clashscore for this structure is 4.

All (67) close contacts within the same asymmetric unit are listed below, sorted by their clash magnitude.

Atom-1	Atom-2	Interatomic distance (Å)	Clash overlap (Å)
1:C:59:ARG:NH1	1:C:159:ASP:OD2	2.19	0.76
1:D:52:LEU:HD13	1:D:125:PHE:HE1	1.50	0.75
1:A:191:CYS:HB3	1:A:193:GLU:OE2	1.87	0.75
1:D:59:ARG:NH1	1:D:159:ASP:OD2	2.18	0.74
1:E:143:LYS:HE3	1:E:186:GLN:NE2	2.06	0.71
1:A:40:ILE:HG12	1:A:52:LEU:CD2	2.21	0.70
1:A:150:SER:HB2	1:A:193:GLU:HG3	1.78	0.65
1:E:59:ARG:NH1	1:E:159:ASP:OD2	2.26	0.65
1:E:72:TYR:O	1:E:75:VAL:HG13	2.03	0.59
1:E:50:VAL:HG21	1:E:127:CYS:SG	2.44	0.57
1:B:25:HIS:NE2	1:C:73:GLY:O	2.37	0.57
1:A:96:THR:O	1:E:122:ARG:HD2	2.06	0.55
1:D:50:VAL:HG21	1:D:127:CYS:SG	2.48	0.54
1:A:50:VAL:HG21	1:A:127:CYS:SG	2.50	0.52
1:D:28:VAL:HG22	1:D:152:PHE:O	2.11	0.51
1:C:10:LYS:HD3	1:C:72:TYR:OH	2.11	0.51
1:C:50:VAL:HG21	1:C:127:CYS:SG	2.51	0.51
1:A:67:TRP:CZ3	1:A:111:HIS:HA	2.45	0.51
1:D:60:TRP:CZ2	1:D:115:VAL:HG11	2.48	0.49
1:B:57:GLN:OE1	1:B:59:ARG:NH2	2.45	0.48
1:C:139:THR:HG22	1:C:203:LYS:HB2	1.96	0.48
1:B:96:THR:O	1:C:122:ARG:HD2	2.14	0.48
1:A:40:ILE:HG12	1:A:52:LEU:HD21	1.95	0.48
1:C:191:CYS:HB3	1:C:193:GLU:OE2	2.15	0.47
1:D:24:ASP:O	1:D:27:GLN:HB3	2.14	0.47
1:B:110:THR:HG22	1:B:111:HIS:N	2.30	0.47
1:D:110:THR:HG22	1:D:111:HIS:N	2.31	0.47
1:D:169:TYR:CZ	1:D:171:SER:HB2	2.50	0.46

Continued on next page...

Continued from previous page...

Atom-1	Atom-2	Interatomic distance (Å)	Clash overlap (Å)
1:A:72:TYR:O	1:A:75:VAL:HG23	2.16	0.45
1:B:50:VAL:HG13	1:B:125:PHE:CE1	2.51	0.45
1:B:24:ASP:HB3	1:B:27:GLN:HG3	1.98	0.45
1:E:21:PRO:HD3	1:E:86:TRP:CD2	2.52	0.45
1:C:176:ILE:HD12	1:C:176:ILE:HG23	1.65	0.44
1:B:19:VAL:HG22	1:C:4:GLU:HG2	1.99	0.44
1:C:128:ASP:HA	1:C:129:PRO:HD3	1.88	0.44
1:A:155:ASP:OD1	1:A:196:ILE:HD13	2.18	0.44
2:B:301:4P0:HC9	2:B:301:4P0:H111	1.52	0.44
1:D:132:VAL:HG13	1:D:206:GLU:HG3	2.00	0.44
1:A:128:ASP:HA	1:A:129:PRO:HD3	1.79	0.44
2:D:301:4P0:HC9	2:D:301:4P0:H111	1.65	0.43
2:B:301:4P0:C3	2:B:301:4P0:C8	2.97	0.43
1:B:21:PRO:HD3	1:B:86:TRP:CD2	2.54	0.43
1:C:193:GLU:H	1:C:193:GLU:HG2	1.71	0.43
1:C:11:LEU:HD23	1:C:11:LEU:HA	1.86	0.43
1:B:72:TYR:O	1:B:75:VAL:HG23	2.19	0.43
1:D:141:ALA:HA	1:D:200:LEU:O	2.19	0.43
1:C:179:ALA:HA	1:C:201:VAL:O	2.18	0.42
1:A:50:VAL:CG2	1:A:127:CYS:SG	3.07	0.42
1:C:40:ILE:HD11	1:C:176:ILE:HD11	2.01	0.42
1:A:21:PRO:HD3	1:A:86:TRP:CD2	2.55	0.42
1:A:110:THR:HG22	1:A:111:HIS:N	2.34	0.42
1:B:132:VAL:CG2	1:B:205:ARG:HA	2.50	0.42
1:A:122:ARG:HD2	1:D:96:THR:O	2.19	0.42
1:B:141:ALA:HA	1:B:200:LEU:O	2.19	0.41
1:A:40:ILE:HG12	1:A:52:LEU:HD23	2.00	0.41
1:A:110:THR:CG2	1:A:111:HIS:N	2.83	0.41
1:A:179:ALA:HA	1:A:201:VAL:O	2.21	0.41
1:C:7:LEU:HD21	1:C:67:TRP:CE2	2.55	0.41
1:C:168:TYR:CZ	1:C:176:ILE:HG12	2.56	0.41
1:D:56:GLU:O	1:D:119:PRO:HD2	2.21	0.41
2:E:301:4P0:HC9	2:E:301:4P0:H111	1.61	0.41
1:A:91:THR:HG22	1:A:92:ALA:O	2.21	0.41
1:A:99:VAL:CG1	1:A:121:GLN:HB3	2.51	0.41
1:E:110:THR:HG22	1:E:111:HIS:N	2.35	0.41
2:B:301:4P0:C3	2:B:301:4P0:HC82	2.50	0.40
1:C:190:CYS:SG	1:C:191:CYS:N	2.94	0.40
1:E:52:LEU:HG	1:E:125:PHE:HE1	1.87	0.40

There are no symmetry-related clashes.

5.3 Torsion angles [i](#)

5.3.1 Protein backbone [i](#)

In the following table, the Percentiles column shows the percent Ramachandran outliers of the chain as a percentile score with respect to all X-ray entries followed by that with respect to entries of similar resolution.

The Analysed column shows the number of residues for which the backbone conformation was analysed, and the total number of residues.

Mol	Chain	Analysed	Favoured	Allowed	Outliers	Percentiles	
1	A	204/230 (89%)	202 (99%)	2 (1%)	0	100	100
1	B	204/230 (89%)	200 (98%)	4 (2%)	0	100	100
1	C	201/230 (87%)	197 (98%)	4 (2%)	0	100	100
1	D	204/230 (89%)	199 (98%)	5 (2%)	0	100	100
1	E	203/230 (88%)	200 (98%)	3 (2%)	0	100	100
All	All	1016/1150 (88%)	998 (98%)	18 (2%)	0	100	100

There are no Ramachandran outliers to report.

5.3.2 Protein sidechains [i](#)

In the following table, the Percentiles column shows the percent sidechain outliers of the chain as a percentile score with respect to all X-ray entries followed by that with respect to entries of similar resolution.

The Analysed column shows the number of residues for which the sidechain conformation was analysed, and the total number of residues.

Mol	Chain	Analysed	Rotameric	Outliers	Percentiles	
1	A	176/208 (85%)	172 (98%)	4 (2%)	50	57
1	B	179/208 (86%)	179 (100%)	0	100	100
1	C	182/208 (88%)	180 (99%)	2 (1%)	73	80
1	D	178/208 (86%)	177 (99%)	1 (1%)	86	90
1	E	171/208 (82%)	171 (100%)	0	100	100
All	All	886/1040 (85%)	879 (99%)	7 (1%)	81	87

All (7) residues with a non-rotameric sidechain are listed below:

Mol	Chain	Res	Type
1	A	24	ASP
1	A	167	SER
1	A	190	CYS
1	A	193	GLU
1	C	127	CYS
1	C	193	GLU
1	D	142	VAL

Sometimes sidechains can be flipped to improve hydrogen bonding and reduce clashes. There are no such sidechains identified.

5.3.3 RNA [i](#)

There are no RNA molecules in this entry.

5.4 Non-standard residues in protein, DNA, RNA chains [i](#)

There are no non-standard protein/DNA/RNA residues in this entry.

5.5 Carbohydrates [i](#)

There are no monosaccharides in this entry.

5.6 Ligand geometry [i](#)

3 ligands are modelled in this entry.

In the following table, the Counts columns list the number of bonds (or angles) for which Mogul statistics could be retrieved, the number of bonds (or angles) that are observed in the model and the number of bonds (or angles) that are defined in the Chemical Component Dictionary. The Link column lists molecule types, if any, to which the group is linked. The Z score for a bond length (or angle) is the number of standard deviations the observed value is removed from the expected value. A bond length (or angle) with $|Z| > 2$ is considered an outlier worth inspection. RMSZ is the root-mean-square of all Z scores of the bond lengths (or angles).

Mol	Type	Chain	Res	Link	Bond lengths			Bond angles		
					Counts	RMSZ	$\# Z > 2$	Counts	RMSZ	$\# Z > 2$
2	4P0	B	301	-	13,13,13	1.03	1 (7%)	8,18,18	1.58	1 (12%)
2	4P0	D	301	-	13,13,13	1.07	1 (7%)	8,18,18	0.84	0
2	4P0	E	301	-	13,13,13	1.24	1 (7%)	8,18,18	0.96	0

In the following table, the Chirals column lists the number of chiral outliers, the number of chiral centers analysed, the number of these observed in the model and the number defined in the Chemical Component Dictionary. Similar counts are reported in the Torsion and Rings columns. '-' means no outliers of that kind were identified.

Mol	Type	Chain	Res	Link	Chirals	Torsions	Rings
2	4P0	B	301	-	-	0/4/23/23	0/2/2/2
2	4P0	D	301	-	-	0/4/23/23	0/2/2/2
2	4P0	E	301	-	-	0/4/23/23	0/2/2/2

All (3) bond length outliers are listed below:

Mol	Chain	Res	Type	Atoms	Z	Observed(Å)	Ideal(Å)
2	E	301	4P0	C4-C6	-3.90	1.47	1.53
2	D	301	4P0	C4-C6	-3.42	1.47	1.53
2	B	301	4P0	C4-C6	-3.20	1.48	1.53

All (1) bond angle outliers are listed below:

Mol	Chain	Res	Type	Atoms	Z	Observed(°)	Ideal(°)
2	B	301	4P0	C11-C10-C6	-2.85	115.87	119.66

There are no chirality outliers.

There are no torsion outliers.

There are no ring outliers.

3 monomers are involved in 5 short contacts:

Mol	Chain	Res	Type	Clashes	Symm-Clashes
2	B	301	4P0	3	0
2	D	301	4P0	1	0
2	E	301	4P0	1	0

5.7 Other polymers [i](#)

There are no such residues in this entry.

5.8 Polymer linkage issues [i](#)

There are no chain breaks in this entry.

6 Fit of model and data [i](#)

6.1 Protein, DNA and RNA chains [i](#)

In the following table, the column labelled ‘#RSRZ > 2’ contains the number (and percentage) of RSRZ outliers, followed by percent RSRZ outliers for the chain as percentile scores relative to all X-ray entries and entries of similar resolution. The OWAB column contains the minimum, median, 95th percentile and maximum values of the occupancy-weighted average B-factor per residue. The column labelled ‘Q < 0.9’ lists the number of (and percentage) of residues with an average occupancy less than 0.9.

Mol	Chain	Analysed	<RSRZ>	#RSRZ>2	OWAB(Å ²)	Q<0.9
1	A	206/230 (89%)	-0.36	1 (0%) 91 91	26, 35, 56, 66	0
1	B	206/230 (89%)	-0.35	0 100 100	24, 31, 46, 58	0
1	C	205/230 (89%)	-0.39	1 (0%) 91 91	24, 33, 54, 71	0
1	D	206/230 (89%)	-0.32	2 (0%) 82 83	26, 35, 51, 61	0
1	E	205/230 (89%)	-0.28	3 (1%) 73 74	27, 35, 52, 62	0
All	All	1028/1150 (89%)	-0.34	7 (0%) 87 87	24, 34, 52, 71	0

All (7) RSRZ outliers are listed below:

Mol	Chain	Res	Type	RSRZ
1	E	25	HIS	2.7
1	D	25	HIS	2.6
1	D	14	ASP	2.5
1	E	24	ASP	2.3
1	A	25	HIS	2.2
1	E	63	TYR	2.2
1	C	25	HIS	2.1

6.2 Non-standard residues in protein, DNA, RNA chains [i](#)

There are no non-standard protein/DNA/RNA residues in this entry.

6.3 Carbohydrates [i](#)

There are no monosaccharides in this entry.

6.4 Ligands [i](#)

In the following table, the Atoms column lists the number of modelled atoms in the group and the number defined in the chemical component dictionary. The B-factors column lists the minimum, median, 95th percentile and maximum values of B factors of atoms in the group. The column labelled 'Q< 0.9' lists the number of atoms with occupancy less than 0.9.

Mol	Type	Chain	Res	Atoms	RSCC	RSR	B-factors(Å ²)	Q<0.9
2	4P0	B	301	12/12	0.94	0.12	31,33,36,40	0
2	4P0	D	301	12/12	0.96	0.10	29,31,33,33	0
2	4P0	E	301	12/12	0.97	0.12	29,30,32,32	0

6.5 Other polymers [i](#)

There are no such residues in this entry.