



# Full wwPDB X-ray Structure Validation Report ⓘ

May 2, 2023 – 04:41 pm BST

PDB ID : 7ZN1  
Title : Avidin + Biotin-Tempo  
Authors : Milani, J.; Lau, K.; Pojer, F.; Ansermet, J.P.; Saenz, F.  
Deposited on : 2022-04-20  
Resolution : 2.33 Å(reported)

This is a Full wwPDB X-ray Structure Validation Report for a publicly released PDB entry.

We welcome your comments at [validation@mail.wwpdb.org](mailto:validation@mail.wwpdb.org)

A user guide is available at

<https://www.wwpdb.org/validation/2017/XrayValidationReportHelp>

with specific help available everywhere you see the ⓘ symbol.

The types of validation reports are described at

<http://www.wwpdb.org/validation/2017/FAQs#types>.

---

The following versions of software and data (see [references ⓘ](#)) were used in the production of this report:

MolProbity : 4.02b-467  
Mogul : 1.8.4, CSD as541be (2020)  
Xtriage (Phenix) : 1.13  
EDS : 2.32.2  
buster-report : 1.1.7 (2018)  
Percentile statistics : 20191225.v01 (using entries in the PDB archive December 25th 2019)  
Refmac : 5.8.0158  
CCP4 : 7.0.044 (Gargrove)  
Ideal geometry (proteins) : Engh & Huber (2001)  
Ideal geometry (DNA, RNA) : Parkinson et al. (1996)  
Validation Pipeline (wwPDB-VP) : 2.32.2

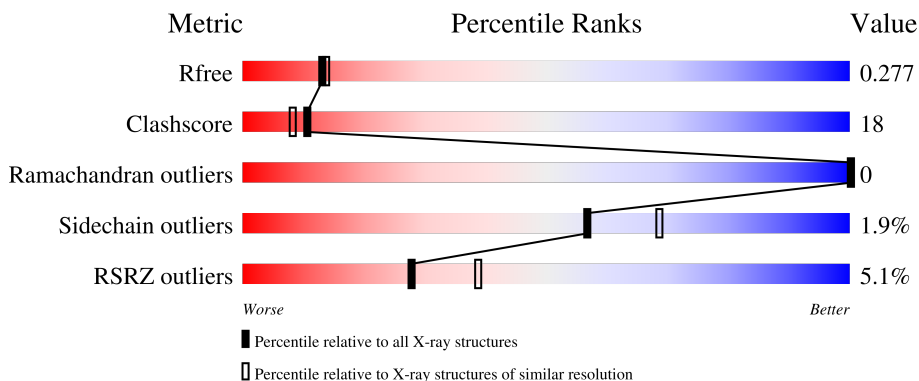
# 1 Overall quality at a glance i

The following experimental techniques were used to determine the structure:

*X-RAY DIFFRACTION*

The reported resolution of this entry is 2.33 Å.

Percentile scores (ranging between 0-100) for global validation metrics of the entry are shown in the following graphic. The table shows the number of entries on which the scores are based.



Metric	Whole archive (#Entries)	Similar resolution (#Entries, resolution range(Å))
$R_{free}$	130704	2096 (2.36-2.32)
Clashscore	141614	2193 (2.36-2.32)
Ramachandran outliers	138981	2159 (2.36-2.32)
Sidechain outliers	138945	2160 (2.36-2.32)
RSRZ outliers	127900	2067 (2.36-2.32)

The table below summarises the geometric issues observed across the polymeric chains and their fit to the electron density. The red, orange, yellow and green segments of the lower bar indicate the fraction of residues that contain outliers for  $\geq 3$ , 2, 1 and 0 types of geometric quality criteria respectively. A grey segment represents the fraction of residues that are not modelled. The numeric value for each fraction is indicated below the corresponding segment, with a dot representing fractions  $\leq 5\%$ . The upper red bar (where present) indicates the fraction of residues that have poor fit to the electron density. The numeric value is given above the bar.

Mol	Chain	Length	Quality of chain
1	A	152	<div style="display: flex; align-items: center;"> <div style="width: 2%; height: 10px; background-color: red; margin-right: 5px;"></div> <div style="width: 51%; height: 10px; background-color: green; margin-right: 5px;"></div> <div style="width: 28%; height: 10px; background-color: yellow; margin-right: 5px;"></div> <div style="width: 20%; height: 10px; background-color: grey; margin-right: 5px;"></div> </div> <p style="font-size: small; margin-top: 5px;">2% 51% 28% 20%</p>
1	B	152	<div style="display: flex; align-items: center;"> <div style="width: 5%; height: 10px; background-color: red; margin-right: 5px;"></div> <div style="width: 47%; height: 10px; background-color: green; margin-right: 5px;"></div> <div style="width: 26%; height: 10px; background-color: yellow; margin-right: 5px;"></div> <div style="width: 27%; height: 10px; background-color: grey; margin-right: 5px;"></div> </div> <p style="font-size: small; margin-top: 5px;">5% 47% 26% 27%</p>
1	C	152	<div style="display: flex; align-items: center;"> <div style="width: 5%; height: 10px; background-color: red; margin-right: 5px;"></div> <div style="width: 47%; height: 10px; background-color: green; margin-right: 5px;"></div> <div style="width: 30%; height: 10px; background-color: yellow; margin-right: 5px;"></div> <div style="width: 22%; height: 10px; background-color: grey; margin-right: 5px;"></div> </div> <p style="font-size: small; margin-top: 5px;">5% 47% 30% 22%</p>
1	D	152	<div style="display: flex; align-items: center;"> <div style="width: 5%; height: 10px; background-color: red; margin-right: 5px;"></div> <div style="width: 54%; height: 10px; background-color: green; margin-right: 5px;"></div> <div style="width: 25%; height: 10px; background-color: yellow; margin-right: 5px;"></div> <div style="width: 20%; height: 10px; background-color: grey; margin-right: 5px;"></div> </div> <p style="font-size: small; margin-top: 5px;">5% 54% 25% 20%</p>
2	E	2	<div style="width: 100%; height: 10px; background-color: green;"></div> <p style="text-align: center; font-size: small; margin-top: 5px;">100%</p>

## 2 Entry composition [i](#)

There are 7 unique types of molecules in this entry. The entry contains 4063 atoms, of which 140 are hydrogens and 0 are deuteriums.

In the tables below, the ZeroOcc column contains the number of atoms modelled with zero occupancy, the AltConf column contains the number of residues with at least one atom in alternate conformation and the Trace column contains the number of residues modelled with at most 2 atoms.

- Molecule 1 is a protein called Avidin.

Mol	Chain	Residues	Atoms					ZeroOcc	AltConf	Trace
			Total	C	N	O	S			
1	A	121	947	594	166	183	4	0	0	0
1	B	111	867	547	149	167	4	0	0	0
1	C	119	929	582	162	181	4	0	0	0
1	D	121	947	594	166	183	4	0	0	0

- Molecule 2 is an oligosaccharide called 2-acetamido-2-deoxy-beta-D-glucopyranose-(1-4)-2-acetamido-2-deoxy-beta-D-glucopyranose.



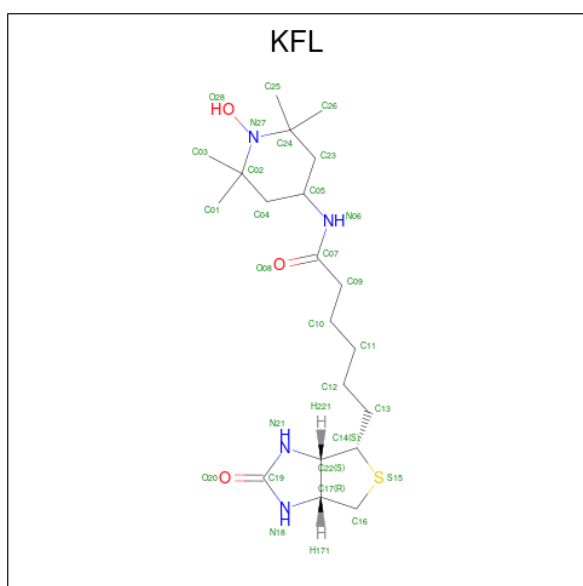
Mol	Chain	Residues	Atoms				ZeroOcc	AltConf	Trace
			Total	C	N	O			
2	E	2	28	16	2	10	0	0	0

- Molecule 3 is 2-acetamido-2-deoxy-beta-D-glucopyranose (three-letter code: NAG) (formula: C<sub>8</sub>H<sub>15</sub>NO<sub>6</sub>).



Mol	Chain	Residues	Atoms				ZeroOcc	AltConf
3	A	1	Total	C	N	O	0	0
			14	8	1	5		
3	B	1	Total	C	N	O	0	0
			14	8	1	5		
3	D	1	Total	C	N	O	0	0
			14	8	1	5		

- Molecule 4 is 6-[(3 {a} {S},4 {S},6 {a} {R})-2-oxidanylidene-1,3,3 {a},4,6,6 {a}-hexahydrothieno[3,4-d]imidazol-4-yl]-{N}-(2,2,6,6-tetramethyl-1-oxidanyl-piperidin-4-yl)hexanamide (three-letter code: KFL) (formula: C<sub>20</sub>H<sub>36</sub>N<sub>4</sub>O<sub>3</sub>S) (labeled as "Ligand of Interest" by depositor).



Mol	Chain	Residues	Atoms					ZeroOcc	AltConf	
4	A	1	Total	C	H	N	O	S	0	0
			63	20	35	4	3	1		
4	B	1	Total	C	H	N	O	S	0	0
			63	20	35	4	3	1		
4	C	1	Total	C	H	N	O	S	0	0
			63	20	35	4	3	1		
4	D	1	Total	C	H	N	O	S	0	0
			63	20	35	4	3	1		

- Molecule 5 is ZINC ION (three-letter code: ZN) (formula: Zn).

Mol	Chain	Residues	Atoms		ZeroOcc	AltConf
5	A	2	Total	Zn	0	0
			2	2		
5	C	2	Total	Zn	0	0
			2	2		

- Molecule 6 is SODIUM ION (three-letter code: NA) (formula: Na).

Mol	Chain	Residues	Atoms		ZeroOcc	AltConf
6	A	1	Total	Na	0	0
			1	1		
6	B	1	Total	Na	0	0
			1	1		
6	C	1	Total	Na	0	0
			1	1		
6	D	1	Total	Na	0	0
			1	1		

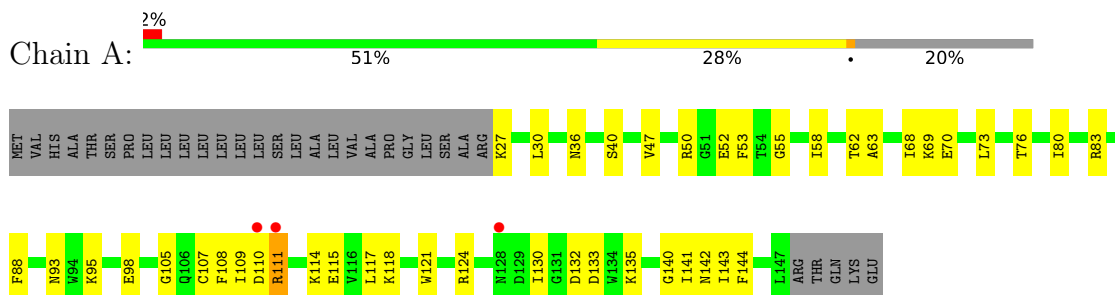
- Molecule 7 is water.

Mol	Chain	Residues	Atoms		ZeroOcc	AltConf
7	A	15	Total	O	0	0
			15	15		
7	B	7	Total	O	0	0
			7	7		
7	C	10	Total	O	0	0
			10	10		
7	D	11	Total	O	0	0
			11	11		

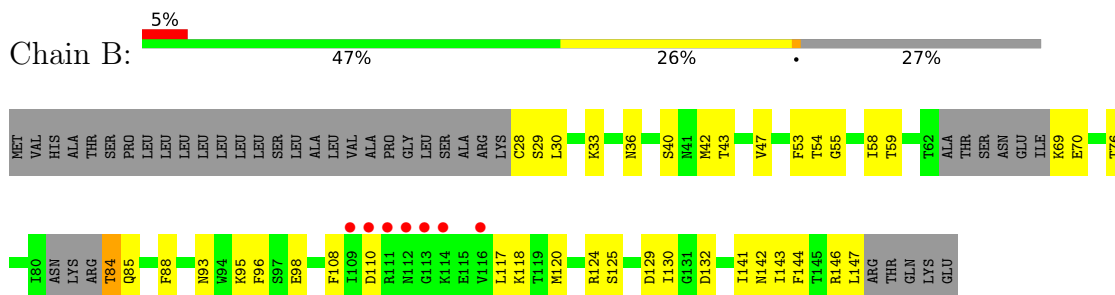
### 3 Residue-property plots i

These plots are drawn for all protein, RNA, DNA and oligosaccharide chains in the entry. The first graphic for a chain summarises the proportions of the various outlier classes displayed in the second graphic. The second graphic shows the sequence view annotated by issues in geometry and electron density. Residues are color-coded according to the number of geometric quality criteria for which they contain at least one outlier: green = 0, yellow = 1, orange = 2 and red = 3 or more. A red dot above a residue indicates a poor fit to the electron density ( $RSRZ > 2$ ). Stretches of 2 or more consecutive residues without any outlier are shown as a green connector. Residues present in the sample, but not in the model, are shown in grey.

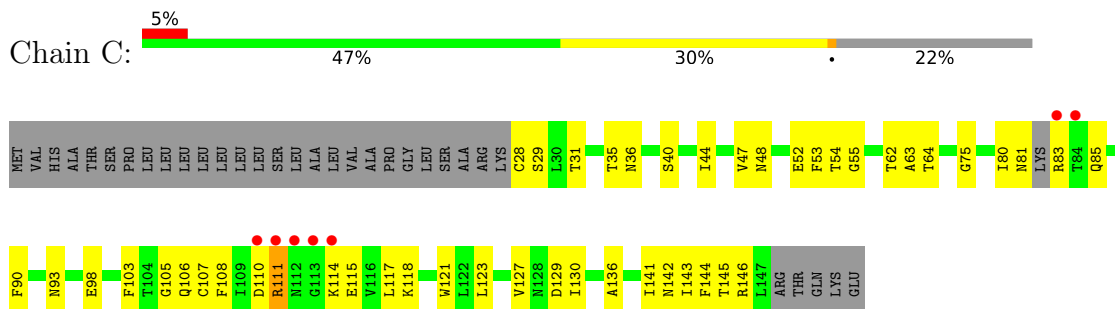
- Molecule 1: Avidin



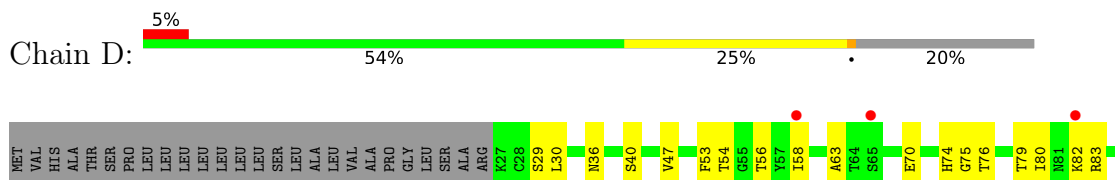
- Molecule 1: Avidin

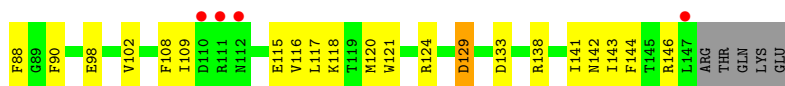


- Molecule 1: Avidin



- Molecule 1: Avidin





- Molecule 2: 2-acetamido-2-deoxy-beta-D-glucopyranose-(1-4)-2-acetamido-2-deoxy-beta-D-glucopyranose

Chain E:  100%

MAG1  
MAG2

## 4 Data and refinement statistics i

Property	Value	Source
Space group	P 1 21 1	Depositor
Cell constants a, b, c, $\alpha$ , $\beta$ , $\gamma$	59.35Å 80.95Å 60.95Å 90.00° 119.08° 90.00°	Depositor
Resolution (Å)	44.50 – 2.33 44.50 – 2.33	Depositor EDS
% Data completeness (in resolution range)	98.3 (44.50-2.33) 98.3 (44.50-2.33)	Depositor EDS
$R_{merge}$	(Not available)	Depositor
$R_{sym}$	(Not available)	Depositor
$\langle I/\sigma(I) \rangle$ <sup>1</sup>	1.52 (at 2.34Å)	Xtriage
Refinement program	PHENIX dev_4827	Depositor
R, $R_{free}$	0.226 , 0.279 0.227 , 0.277	Depositor DCC
$R_{free}$ test set	1057 reflections (4.99%)	wwPDB-VP
Wilson B-factor (Å <sup>2</sup> )	44.8	Xtriage
Anisotropy	0.657	Xtriage
Bulk solvent $k_{sol}$ (e/Å <sup>3</sup> ), $B_{sol}$ (Å <sup>2</sup> )	0.36 , 46.2	EDS
L-test for twinning <sup>2</sup>	$\langle  L  \rangle = 0.49$ , $\langle L^2 \rangle = 0.33$	Xtriage
Estimated twinning fraction	0.000 for -h-l,k,h 0.000 for l,k,-h-l 0.049 for h,-k,-h-l 0.000 for -h-l,-k,l 0.006 for l,-k,h	Xtriage
$F_o, F_c$ correlation	0.95	EDS
Total number of atoms	4063	wwPDB-VP
Average B, all atoms (Å <sup>2</sup> )	51.0	wwPDB-VP

Xtriage's analysis on translational NCS is as follows: *The analyses of the Patterson function reveals a significant off-origin peak that is 44.81 % of the origin peak, indicating pseudo-translational symmetry. The chance of finding a peak of this or larger height randomly in a structure without pseudo-translational symmetry is equal to 1.4461e-04. The detected translational NCS is most likely also responsible for the elevated intensity ratio.*

<sup>1</sup>Intensities estimated from amplitudes.

<sup>2</sup>Theoretical values of  $\langle |L| \rangle$ ,  $\langle L^2 \rangle$  for acentric reflections are 0.5, 0.333 respectively for untwinned datasets, and 0.375, 0.2 for perfectly twinned datasets.



## 5 Model quality [i](#)

### 5.1 Standard geometry [i](#)

Bond lengths and bond angles in the following residue types are not validated in this section: NA, NAG, KFL, ZN

The Z score for a bond length (or angle) is the number of standard deviations the observed value is removed from the expected value. A bond length (or angle) with  $|Z| > 5$  is considered an outlier worth inspection. RMSZ is the root-mean-square of all Z scores of the bond lengths (or angles).

Mol	Chain	Bond lengths		Bond angles	
		RMSZ	# Z  >5	RMSZ	# Z  >5
1	A	0.27	0/965	0.52	0/1307
1	B	0.27	0/883	0.51	0/1195
1	C	0.27	0/946	0.51	0/1282
1	D	0.27	0/965	0.53	0/1307
All	All	0.27	0/3759	0.52	0/5091

There are no bond length outliers.

There are no bond angle outliers.

There are no chirality outliers.

There are no planarity outliers.

### 5.2 Too-close contacts [i](#)

In the following table, the Non-H and H(model) columns list the number of non-hydrogen atoms and hydrogen atoms in the chain respectively. The H(added) column lists the number of hydrogen atoms added and optimized by MolProbity. The Clashes column lists the number of clashes within the asymmetric unit, whereas Symm-Clashes lists symmetry-related clashes.

Mol	Chain	Non-H	H(model)	H(added)	Clashes	Symm-Clashes
1	A	947	0	932	38	1
1	B	867	0	845	37	0
1	C	929	0	905	39	0
1	D	947	0	932	40	1
2	E	28	0	25	0	0
3	A	14	0	13	0	0
3	B	14	0	13	2	0
3	D	14	0	13	0	0
4	A	28	35	0	1	0

*Continued on next page...*

Continued from previous page...

Mol	Chain	Non-H	H(model)	H(added)	Clashes	Symm-Clashes
4	B	28	35	0	1	0
4	C	28	35	0	1	0
4	D	28	35	0	3	0
5	A	2	0	0	0	0
5	C	2	0	0	0	0
6	A	1	0	0	0	0
6	B	1	0	0	0	0
6	C	1	0	0	0	0
6	D	1	0	0	0	0
7	A	15	0	0	1	0
7	B	7	0	0	1	0
7	C	10	0	0	1	0
7	D	11	0	0	1	0
All	All	3923	140	3678	139	1

The all-atom clashscore is defined as the number of clashes found per 1000 atoms (including hydrogen atoms). The all-atom clashscore for this structure is 18.

All (139) close contacts within the same asymmetric unit are listed below, sorted by their clash magnitude.

Atom-1	Atom-2	Interatomic distance (Å)	Clash overlap (Å)
1:D:120:MET:HG2	1:D:141:ILE:HG22	1.47	0.96
1:C:117:LEU:HB2	1:C:144:PHE:HB2	1.49	0.94
1:A:111:ARG:H	1:A:111:ARG:HD3	1.33	0.92
1:C:93:ASN:HB2	1:D:76:THR:HG21	1.60	0.84
1:B:129:ASP:OD2	7:B:301:HOH:O	1.97	0.83
1:A:117:LEU:HB2	1:A:144:PHE:HB2	1.63	0.80
1:C:129:ASP:OD2	7:C:301:HOH:O	2.06	0.74
1:B:47:VAL:HG22	1:B:53:PHE:HB3	1.71	0.73
1:B:58:ILE:CG1	1:B:70:GLU:HG2	2.20	0.72
1:A:118:LYS:HE3	1:A:143:ILE:HG12	1.70	0.71
1:D:58:ILE:HG13	1:D:70:GLU:HG3	1.70	0.71
1:C:63:ALA:HB3	4:C:201:KFL:C03	2.20	0.71
1:D:117:LEU:HB2	1:D:144:PHE:HB2	1.73	0.71
1:B:117:LEU:HB2	1:B:144:PHE:HB2	1.75	0.69
1:B:58:ILE:HG12	1:B:70:GLU:HG2	1.76	0.67
1:B:84:THR:HG23	1:B:85:GLN:H	1.59	0.67
1:A:132:ASP:HB3	1:A:135:LYS:HE2	1.79	0.65
1:A:58:ILE:HG12	1:A:70:GLU:HG3	1.80	0.64
1:A:98:GLU:OE1	7:A:301:HOH:O	2.14	0.64
1:C:111:ARG:HD2	1:C:111:ARG:H	1.62	0.63

Continued on next page...

*Continued from previous page...*

Atom-1	Atom-2	Interatomic distance (Å)	Clash overlap (Å)
1:A:47:VAL:HG22	1:A:53:PHE:HB3	1.79	0.63
1:C:115:GLU:OE1	1:C:146:ARG:NE	2.23	0.63
1:D:75:GLY:HA3	1:D:90:PHE:HB3	1.80	0.62
1:C:62:THR:OG1	1:C:64:THR:HG22	1.99	0.62
1:A:83:ARG:NH1	1:B:98:GLU:OE1	2.34	0.61
1:A:130:ILE:HD12	1:B:108:PHE:CB	2.31	0.61
1:B:141:ILE:HG12	1:C:141:ILE:HG12	1.85	0.59
1:B:120:MET:HG2	1:B:141:ILE:HG22	1.85	0.59
1:D:129:ASP:N	1:D:129:ASP:OD1	2.35	0.57
1:D:108:PHE:HB2	1:D:116:VAL:HG13	1.87	0.57
1:A:141:ILE:C	1:A:141:ILE:HD12	2.26	0.56
1:D:56:THR:CG2	1:D:70:GLU:HG2	2.35	0.56
1:D:36:ASN:ND2	1:D:40:SER:HB2	2.21	0.55
1:A:30:LEU:HD21	1:A:88:PHE:CG	2.41	0.55
1:B:36:ASN:HA	1:B:143:ILE:O	2.07	0.55
1:A:118:LYS:CE	1:A:143:ILE:HG12	2.37	0.55
1:A:141:ILE:HG12	1:D:141:ILE:HG12	1.89	0.55
1:C:105:GLY:HA2	1:D:124:ARG:HD3	1.89	0.55
1:C:47:VAL:HG22	1:C:53:PHE:HB3	1.89	0.54
1:B:58:ILE:HG13	1:B:70:GLU:HG2	1.90	0.54
1:D:109:ILE:CD1	1:D:115:GLU:HG2	2.38	0.54
1:D:63:ALA:HB3	4:D:202:KFL:C25	2.37	0.53
1:B:36:ASN:HB3	1:B:144:PHE:CE2	2.43	0.53
1:B:54:THR:HG22	1:B:55:GLY:N	2.24	0.53
1:D:36:ASN:HB3	1:D:144:PHE:CE1	2.44	0.52
1:D:142:ASN:OD1	4:D:202:KFL:N18	2.43	0.52
1:C:121:TRP:CZ3	1:C:123:LEU:HB2	2.45	0.52
1:A:124:ARG:NH1	1:A:133:ASP:OD1	2.34	0.52
1:B:30:LEU:HD21	1:B:88:PHE:CD1	2.45	0.51
1:B:30:LEU:HD21	1:B:88:PHE:CG	2.46	0.51
1:D:124:ARG:NH1	1:D:133:ASP:OD1	2.41	0.51
1:B:124:ARG:HD2	1:B:125:SER:N	2.26	0.51
1:C:28:CYS:HA	1:C:115:GLU:OE2	2.11	0.51
1:C:36:ASN:HA	1:C:143:ILE:O	2.10	0.51
1:D:30:LEU:HD21	1:D:88:PHE:CG	2.46	0.51
1:D:124:ARG:NH2	1:D:133:ASP:OD1	2.42	0.51
1:C:54:THR:HG22	1:C:55:GLY:N	2.26	0.51
1:D:36:ASN:HD21	1:D:40:SER:HB2	1.76	0.50
1:C:111:ARG:HD2	1:C:111:ARG:N	2.26	0.50
1:B:42:MET:HE2	1:B:144:PHE:CE2	2.46	0.50
1:A:36:ASN:HA	1:A:143:ILE:O	2.11	0.49

*Continued on next page...*

*Continued from previous page...*

Atom-1	Atom-2	Interatomic distance (Å)	Clash overlap (Å)
1:A:76:THR:HB	1:B:93:ASN:HD22	1.77	0.49
1:B:36:ASN:ND2	1:B:40:SER:HB2	2.27	0.49
1:D:115:GLU:OE2	1:D:146:ARG:NH1	2.45	0.49
1:A:80:ILE:HD11	1:B:95:LYS:HA	1.93	0.49
1:D:47:VAL:HG22	1:D:53:PHE:HB3	1.94	0.49
1:D:29:SER:O	1:D:146:ARG:NH2	2.45	0.49
1:D:54:THR:HG22	1:D:74:HIS:HD1	1.76	0.49
1:C:75:GLY:HA3	1:C:90:PHE:HB3	1.94	0.49
1:C:48:ASN:HD21	1:C:52:GLU:HB2	1.76	0.49
1:C:93:ASN:ND2	1:D:76:THR:OG1	2.45	0.49
1:C:141:ILE:C	1:C:141:ILE:HD12	2.33	0.49
1:C:141:ILE:HD12	1:C:142:ASN:N	2.28	0.49
1:B:36:ASN:HD21	1:B:40:SER:HB2	1.77	0.48
1:D:83:ARG:NH2	7:D:303:HOH:O	2.46	0.48
1:A:107:CYS:HA	1:A:117:LEU:HD23	1.96	0.48
1:B:58:ILE:HG22	1:B:58:ILE:O	2.14	0.48
1:C:129:ASP:OD1	1:C:129:ASP:N	2.44	0.48
1:A:62:THR:OG1	1:A:63:ALA:N	2.47	0.48
1:A:121:TRP:CZ2	1:A:140:GLY:HA3	2.49	0.48
1:B:147:LEU:HD11	3:B:201:NAG:H62	1.94	0.48
1:C:80:ILE:O	1:C:81:ASN:HB2	2.14	0.48
1:B:69:LYS:HB2	1:B:96:PHE:CE1	2.49	0.47
1:A:108:PHE:CD2	1:B:130:ILE:HG13	2.49	0.47
1:C:111:ARG:H	1:C:111:ARG:CD	2.26	0.47
1:D:75:GLY:HA3	1:D:90:PHE:CB	2.44	0.47
1:D:118:LYS:HD3	1:D:143:ILE:HG23	1.95	0.47
1:B:59:THR:HG22	1:B:69:LYS:O	2.15	0.47
1:B:58:ILE:HG21	3:B:201:NAG:O7	2.15	0.47
1:C:75:GLY:HA3	1:C:90:PHE:CB	2.45	0.47
1:A:109:ILE:CD1	1:A:115:GLU:HG2	2.45	0.46
1:A:88:PHE:CE1	1:A:117:LEU:HD22	2.51	0.46
1:A:93:ASN:HB2	1:B:76:THR:OG1	2.16	0.46
1:C:98:GLU:HG2	1:D:80:ILE:HG22	1.97	0.46
1:B:33:LYS:HD3	1:B:43:THR:HG23	1.98	0.46
1:A:130:ILE:HD12	1:B:108:PHE:HB2	1.98	0.46
1:A:133:ASP:OD2	1:B:118:LYS:HE3	2.15	0.46
1:A:105:GLY:HA3	1:A:118:LYS:O	2.17	0.45
1:C:103:PHE:CD2	1:C:121:TRP:HB3	2.51	0.45
1:C:105:GLY:HA3	1:C:118:LYS:O	2.16	0.45
1:D:141:ILE:HD12	1:D:141:ILE:C	2.36	0.45
1:B:29:SER:O	1:B:146:ARG:NH2	2.50	0.45

*Continued on next page...*

Continued from previous page...

Atom-1	Atom-2	Interatomic distance (Å)	Clash overlap (Å)
1:B:142:ASN:OD1	4:B:202:KFL:N18	2.50	0.45
1:D:58:ILE:N	1:D:58:ILE:HD12	2.32	0.45
1:A:110:ASP:HB2	1:A:114:LYS:HG2	1.98	0.44
1:C:35:THR:HA	1:C:40:SER:O	2.18	0.44
1:D:36:ASN:HA	1:D:143:ILE:O	2.17	0.44
1:B:147:LEU:O	1:B:147:LEU:HD12	2.18	0.44
1:C:110:ASP:OD2	1:C:114:LYS:HG2	2.17	0.44
1:C:130:ILE:HD12	1:D:116:VAL:HG11	2.00	0.44
1:A:36:ASN:HB3	1:A:144:PHE:CE2	2.53	0.44
1:A:73:LEU:HD12	1:A:73:LEU:O	2.18	0.44
1:D:56:THR:HG21	1:D:70:GLU:CD	2.38	0.44
1:D:79:THR:O	1:D:82:LYS:HD2	2.18	0.43
1:A:30:LEU:HD21	1:A:88:PHE:CD2	2.54	0.43
1:C:29:SER:O	1:C:146:ARG:NH2	2.52	0.42
1:C:48:ASN:ND2	1:C:52:GLU:HB2	2.33	0.42
1:C:106:GLN:HB3	1:C:108:PHE:CE2	2.54	0.42
1:C:114:LYS:HE2	1:C:145:THR:CG2	2.50	0.42
1:C:85:GLN:HB3	1:C:107:CYS:O	2.19	0.42
1:A:55:GLY:C	1:A:73:LEU:HG	2.40	0.42
1:A:50:ARG:NH1	1:A:52:GLU:OE2	2.52	0.42
1:C:31:THR:HA	1:C:44:ILE:HG22	2.01	0.42
1:B:147:LEU:HD12	1:B:147:LEU:C	2.39	0.42
1:C:81:ASN:HD22	1:C:83:ARG:NH1	2.18	0.42
1:D:138:ARG:HD2	4:D:202:KFL:C26	2.50	0.42
1:A:62:THR:HG22	1:A:68:ILE:HD11	2.01	0.42
1:D:56:THR:HG21	1:D:70:GLU:OE1	2.20	0.42
1:A:141:ILE:HD12	1:A:142:ASN:N	2.35	0.41
1:C:36:ASN:ND2	1:C:40:SER:HB2	2.34	0.41
1:A:36:ASN:HD21	1:A:40:SER:HB2	1.86	0.41
1:C:127:VAL:HG11	1:C:136:ALA:HB2	2.03	0.41
1:D:54:THR:HG22	1:D:74:HIS:ND1	2.36	0.41
1:B:118:LYS:HE3	1:B:118:LYS:HB3	1.76	0.41
1:D:102:VAL:O	1:D:121:TRP:HA	2.21	0.41
1:A:142:ASN:OD1	4:A:202:KFL:N18	2.54	0.40
1:D:82:LYS:HD2	1:D:82:LYS:N	2.36	0.40
1:D:120:MET:HA	1:D:141:ILE:HA	2.03	0.40
1:A:95:LYS:O	1:A:95:LYS:HG2	2.22	0.40

All (1) symmetry-related close contacts are listed below. The label for Atom-2 includes the symmetry operator and encoded unit-cell translations to be applied.

Atom-1	Atom-2	Interatomic distance (Å)	Clash overlap (Å)
1:A:69:LYS:NZ	1:D:98:GLU:OE1[2_555]	1.98	0.22

### 5.3 Torsion angles [i](#)

#### 5.3.1 Protein backbone [i](#)

In the following table, the Percentiles column shows the percent Ramachandran outliers of the chain as a percentile score with respect to all X-ray entries followed by that with respect to entries of similar resolution.

The Analysed column shows the number of residues for which the backbone conformation was analysed, and the total number of residues.

Mol	Chain	Analysed	Favoured	Allowed	Outliers	Percentiles	
1	A	119/152 (78%)	115 (97%)	4 (3%)	0	100	100
1	B	105/152 (69%)	102 (97%)	3 (3%)	0	100	100
1	C	115/152 (76%)	110 (96%)	5 (4%)	0	100	100
1	D	119/152 (78%)	117 (98%)	2 (2%)	0	100	100
All	All	458/608 (75%)	444 (97%)	14 (3%)	0	100	100

There are no Ramachandran outliers to report.

#### 5.3.2 Protein sidechains [i](#)

In the following table, the Percentiles column shows the percent sidechain outliers of the chain as a percentile score with respect to all X-ray entries followed by that with respect to entries of similar resolution.

The Analysed column shows the number of residues for which the sidechain conformation was analysed, and the total number of residues.

Mol	Chain	Analysed	Rotameric	Outliers	Percentiles	
1	A	106/132 (80%)	104 (98%)	2 (2%)	57	68
1	B	97/132 (74%)	93 (96%)	4 (4%)	30	38
1	C	104/132 (79%)	103 (99%)	1 (1%)	76	85
1	D	106/132 (80%)	105 (99%)	1 (1%)	78	87
All	All	413/528 (78%)	405 (98%)	8 (2%)	57	68

All (8) residues with a non-rotameric sidechain are listed below:

Mol	Chain	Res	Type
1	A	27	LYS
1	A	111	ARG
1	B	28	CYS
1	B	84	THR
1	B	110	ASP
1	B	132	ASP
1	C	111	ARG
1	D	129	ASP

Sometimes sidechains can be flipped to improve hydrogen bonding and reduce clashes. There are no such sidechains identified.

### 5.3.3 RNA [i](#)

There are no RNA molecules in this entry.

## 5.4 Non-standard residues in protein, DNA, RNA chains [i](#)

There are no non-standard protein/DNA/RNA residues in this entry.

## 5.5 Carbohydrates [i](#)

2 monosaccharides are modelled in this entry.

In the following table, the Counts columns list the number of bonds (or angles) for which Mogul statistics could be retrieved, the number of bonds (or angles) that are observed in the model and the number of bonds (or angles) that are defined in the Chemical Component Dictionary. The Link column lists molecule types, if any, to which the group is linked. The Z score for a bond length (or angle) is the number of standard deviations the observed value is removed from the expected value. A bond length (or angle) with  $|Z| > 2$  is considered an outlier worth inspection. RMSZ is the root-mean-square of all Z scores of the bond lengths (or angles).

Mol	Type	Chain	Res	Link	Bond lengths			Bond angles		
					Counts	RMSZ	$\# Z  > 2$	Counts	RMSZ	$\# Z  > 2$
2	NAG	E	1	2,1	14,14,15	0.20	0	17,19,21	0.40	0
2	NAG	E	2	2	14,14,15	0.26	0	17,19,21	0.41	0

In the following table, the Chirals column lists the number of chiral outliers, the number of chiral centers analysed, the number of these observed in the model and the number defined in the Chemical Component Dictionary. Similar counts are reported in the Torsion and Rings columns. '·' means no outliers of that kind were identified.

Mol	Type	Chain	Res	Link	Chirals	Torsions	Rings
2	NAG	E	1	2,1	-	2/6/23/26	0/1/1/1
2	NAG	E	2	2	-	2/6/23/26	0/1/1/1

There are no bond length outliers.

There are no bond angle outliers.

There are no chirality outliers.

All (4) torsion outliers are listed below:

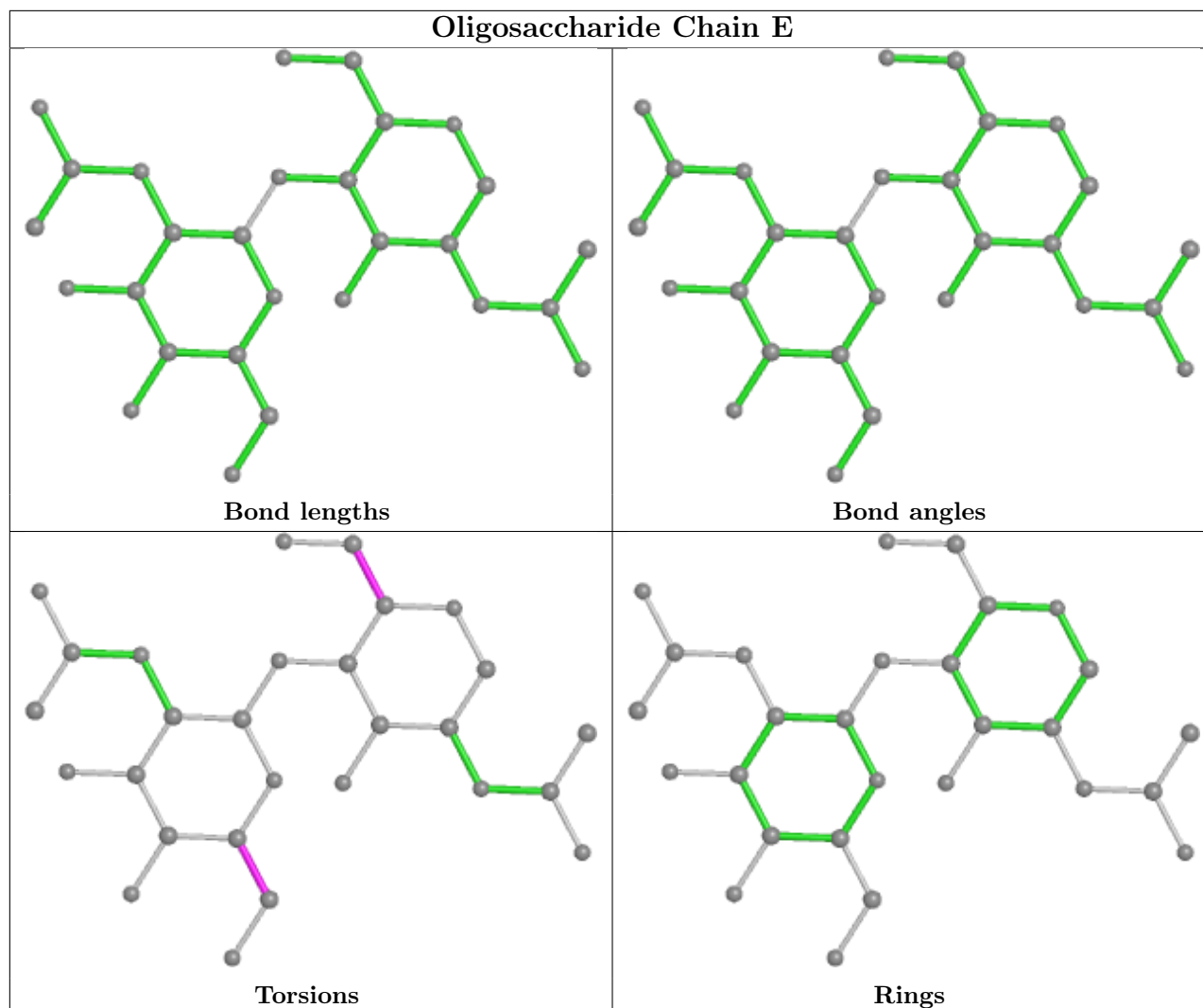
Mol	Chain	Res	Type	Atoms
2	E	2	NAG	C4-C5-C6-O6
2	E	1	NAG	O5-C5-C6-O6
2	E	1	NAG	C4-C5-C6-O6
2	E	2	NAG	O5-C5-C6-O6

There are no ring outliers.

No monomer is involved in short contacts.

The following is a two-dimensional graphical depiction of Mogul quality analysis of bond lengths, bond angles, torsion angles, and ring geometry for oligosaccharide.





## 5.6 Ligand geometry [i](#)

Of 15 ligands modelled in this entry, 8 are monoatomic - leaving 7 for Mogul analysis.

In the following table, the Counts columns list the number of bonds (or angles) for which Mogul statistics could be retrieved, the number of bonds (or angles) that are observed in the model and the number of bonds (or angles) that are defined in the Chemical Component Dictionary. The Link column lists molecule types, if any, to which the group is linked. The Z score for a bond length (or angle) is the number of standard deviations the observed value is removed from the expected value. A bond length (or angle) with  $|Z| > 2$  is considered an outlier worth inspection. RMSZ is the root-mean-square of all Z scores of the bond lengths (or angles).

Mol	Type	Chain	Res	Link	Bond lengths			Bond angles		
					Counts	RMSZ	# $ Z  > 2$	Counts	RMSZ	# $ Z  > 2$
4	KFL	B	202	-	30,30,30	6.64	17 (56%)	45,45,45	2.58	16 (35%)
4	KFL	D	202	-	30,30,30	6.64	17 (56%)	45,45,45	2.31	14 (31%)
3	NAG	B	201	1	14,14,15	0.25	0	17,19,21	0.42	0

Mol	Type	Chain	Res	Link	Bond lengths			Bond angles		
					Counts	RMSZ	# Z  > 2	Counts	RMSZ	# Z  > 2
3	NAG	A	201	1	14,14,15	0.18	0	17,19,21	0.46	0
3	NAG	D	201	1	14,14,15	0.22	0	17,19,21	0.44	0
4	KFL	C	201	-	30,30,30	6.58	18 (60%)	45,45,45	2.45	15 (33%)
4	KFL	A	202	-	30,30,30	6.65	15 (50%)	45,45,45	2.52	14 (31%)

In the following table, the Chirals column lists the number of chiral outliers, the number of chiral centers analysed, the number of these observed in the model and the number defined in the Chemical Component Dictionary. Similar counts are reported in the Torsion and Rings columns. '-' means no outliers of that kind were identified.

Mol	Type	Chain	Res	Link	Chirals	Torsions	Rings
4	KFL	B	202	-	-	6/12/55/55	0/3/3/3
4	KFL	D	202	-	-	4/12/55/55	0/3/3/3
3	NAG	B	201	1	-	0/6/23/26	0/1/1/1
3	NAG	A	201	1	-	2/6/23/26	0/1/1/1
3	NAG	D	201	1	-	2/6/23/26	0/1/1/1
4	KFL	C	201	-	-	4/12/55/55	0/3/3/3
4	KFL	A	202	-	-	3/12/55/55	0/3/3/3

All (67) bond length outliers are listed below:

Mol	Chain	Res	Type	Atoms	Z	Observed(Å)	Ideal(Å)
4	A	202	KFL	C14-S15	-26.26	1.40	1.82
4	B	202	KFL	C14-S15	-25.91	1.41	1.82
4	D	202	KFL	C14-S15	-25.91	1.41	1.82
4	C	201	KFL	C14-S15	-25.72	1.41	1.82
4	C	201	KFL	C19-N21	13.25	1.57	1.35
4	D	202	KFL	C19-N21	13.23	1.57	1.35
4	A	202	KFL	C19-N21	13.14	1.57	1.35
4	B	202	KFL	C19-N21	13.00	1.56	1.35
4	B	202	KFL	C19-N18	9.77	1.51	1.35
4	A	202	KFL	C19-N18	9.73	1.51	1.35
4	D	202	KFL	C19-N18	9.69	1.51	1.35
4	C	201	KFL	C19-N18	9.34	1.50	1.35
4	B	202	KFL	C23-C05	-7.52	1.44	1.52
4	B	202	KFL	C22-N21	-7.34	1.32	1.45
4	A	202	KFL	C22-N21	-7.12	1.33	1.45
4	C	201	KFL	C22-N21	-7.10	1.33	1.45
4	D	202	KFL	C23-C05	-7.10	1.44	1.52
4	D	202	KFL	C14-C22	7.01	1.68	1.53

*Continued on next page...*

*Continued from previous page...*

Mol	Chain	Res	Type	Atoms	Z	Observed(Å)	Ideal(Å)
4	A	202	KFL	C23-C05	-6.89	1.44	1.52
4	D	202	KFL	C22-N21	-6.87	1.33	1.45
4	C	201	KFL	C14-C22	6.59	1.67	1.53
4	C	201	KFL	C23-C05	-6.57	1.45	1.52
4	D	202	KFL	C13-C14	6.55	1.68	1.52
4	B	202	KFL	C04-C05	-6.53	1.45	1.52
4	C	201	KFL	C07-N06	6.49	1.47	1.34
4	B	202	KFL	C14-C22	6.45	1.67	1.53
4	A	202	KFL	C14-C22	6.45	1.67	1.53
4	A	202	KFL	C07-N06	6.37	1.47	1.34
4	D	202	KFL	C04-C05	-6.36	1.45	1.52
4	D	202	KFL	C07-N06	6.35	1.47	1.34
4	A	202	KFL	C13-C14	6.32	1.67	1.52
4	C	201	KFL	C13-C14	6.18	1.67	1.52
4	B	202	KFL	C07-N06	6.14	1.47	1.34
4	B	202	KFL	C13-C14	6.11	1.67	1.52
4	C	201	KFL	C04-C05	-6.08	1.45	1.52
4	A	202	KFL	C04-C05	-6.05	1.45	1.52
4	A	202	KFL	C16-C17	-5.53	1.43	1.53
4	D	202	KFL	C16-C17	-5.29	1.43	1.53
4	B	202	KFL	C16-C17	-5.27	1.43	1.53
4	C	201	KFL	C16-C17	-5.09	1.44	1.53
4	A	202	KFL	C17-N18	-5.06	1.38	1.46
4	C	201	KFL	C17-N18	-4.99	1.38	1.46
4	B	202	KFL	C17-N18	-4.92	1.38	1.46
4	D	202	KFL	C17-N18	-4.83	1.38	1.46
4	C	201	KFL	O28-N27	-4.80	1.17	1.43
4	A	202	KFL	O28-N27	-4.79	1.17	1.43
4	B	202	KFL	O28-N27	-4.74	1.18	1.43
4	D	202	KFL	O28-N27	-4.69	1.18	1.43
4	C	201	KFL	C17-C22	3.13	1.64	1.55
4	B	202	KFL	C17-C22	3.09	1.64	1.55
4	D	202	KFL	C17-C22	2.95	1.63	1.55
4	A	202	KFL	C17-C22	2.86	1.63	1.55
4	C	201	KFL	C24-N27	-2.65	1.45	1.48
4	B	202	KFL	C02-N27	-2.65	1.45	1.48
4	D	202	KFL	C02-N27	-2.62	1.45	1.48
4	C	201	KFL	C02-N27	-2.58	1.45	1.48
4	B	202	KFL	C24-N27	-2.46	1.45	1.48
4	B	202	KFL	O08-C07	-2.37	1.18	1.23
4	C	201	KFL	O08-C07	-2.33	1.18	1.23
4	C	201	KFL	C09-C07	2.31	1.55	1.51

*Continued on next page...*

*Continued from previous page...*

Mol	Chain	Res	Type	Atoms	Z	Observed(Å)	Ideal(Å)
4	D	202	KFL	C09-C07	2.28	1.55	1.51
4	A	202	KFL	C02-N27	-2.27	1.45	1.48
4	B	202	KFL	C09-C07	2.24	1.55	1.51
4	D	202	KFL	O08-C07	-2.15	1.18	1.23
4	A	202	KFL	C16-S15	-2.05	1.75	1.81
4	D	202	KFL	C24-N27	-2.02	1.46	1.48
4	C	201	KFL	O20-C19	-2.01	1.19	1.23

All (59) bond angle outliers are listed below:

Mol	Chain	Res	Type	Atoms	Z	Observed(°)	Ideal(°)
4	B	202	KFL	C23-C05-C04	7.13	114.85	108.71
4	A	202	KFL	C16-S15-C14	6.68	103.62	89.89
4	B	202	KFL	C16-S15-C14	6.59	103.43	89.89
4	A	202	KFL	C23-C24-N27	6.45	116.64	108.69
4	C	201	KFL	C22-C17-N18	6.29	109.11	102.43
4	C	201	KFL	C16-S15-C14	6.26	102.74	89.89
4	D	202	KFL	C16-S15-C14	5.93	102.07	89.89
4	A	202	KFL	C17-C22-N21	5.59	108.68	102.67
4	B	202	KFL	C22-C17-N18	5.36	108.12	102.43
4	D	202	KFL	C22-C17-N18	5.33	108.10	102.43
4	C	201	KFL	C23-C05-C04	5.25	113.23	108.71
4	A	202	KFL	C22-C17-N18	5.23	107.99	102.43
4	B	202	KFL	C17-C22-N21	5.11	108.16	102.67
4	D	202	KFL	C17-C22-N21	5.06	108.11	102.67
4	A	202	KFL	C22-N21-C19	-4.96	108.00	112.62
4	B	202	KFL	C04-C05-N06	-4.89	104.25	110.29
4	A	202	KFL	C04-C02-N27	4.66	114.44	108.69
4	D	202	KFL	C22-N21-C19	-4.33	108.58	112.62
4	B	202	KFL	C22-N21-C19	-4.30	108.61	112.62
4	C	201	KFL	C16-C17-C22	-4.30	104.93	108.66
4	C	201	KFL	C17-C22-N21	4.28	107.28	102.67
4	C	201	KFL	C22-N21-C19	-4.23	108.67	112.62
4	C	201	KFL	C17-N18-C19	-4.23	106.95	112.46
4	B	202	KFL	C04-C02-N27	4.06	113.69	108.69
4	D	202	KFL	C16-C17-C22	-3.75	105.40	108.66
4	B	202	KFL	C17-N18-C19	-3.73	107.59	112.46
4	D	202	KFL	C23-C24-N27	3.69	113.24	108.69
4	D	202	KFL	C04-C02-N27	3.66	113.20	108.69
4	A	202	KFL	C17-N18-C19	-3.60	107.77	112.46
4	C	201	KFL	C04-C02-N27	3.55	113.07	108.69
4	D	202	KFL	C14-C22-N21	-3.46	110.02	113.13

*Continued on next page...*

*Continued from previous page...*

Mol	Chain	Res	Type	Atoms	Z	Observed(°)	Ideal(°)
4	D	202	KFL	C17-N18-C19	-3.43	108.00	112.46
4	A	202	KFL	C05-N06-C07	-3.42	117.88	122.92
4	D	202	KFL	C14-C22-C17	-3.36	105.03	108.94
4	A	202	KFL	C16-C17-C22	-3.33	105.77	108.66
4	C	201	KFL	C16-C17-N18	-3.28	108.87	113.03
4	A	202	KFL	C14-C22-N21	-3.24	110.22	113.13
4	B	202	KFL	C14-C22-C17	-3.21	105.21	108.94
4	B	202	KFL	C16-C17-N18	-3.14	109.04	113.03
4	C	201	KFL	C23-C24-N27	3.12	112.54	108.69
4	B	202	KFL	C16-C17-C22	-3.07	106.00	108.66
4	B	202	KFL	C24-C23-C05	-2.89	111.04	113.77
4	D	202	KFL	C23-C05-C04	2.89	111.20	108.71
4	A	202	KFL	C14-C22-C17	-2.79	105.70	108.94
4	A	202	KFL	C02-C04-C05	-2.75	111.18	113.77
4	C	201	KFL	C22-C14-S15	-2.74	102.59	105.20
4	D	202	KFL	C05-N06-C07	-2.73	118.90	122.92
4	C	201	KFL	C14-C22-C17	-2.70	105.80	108.94
4	C	201	KFL	C09-C07-N06	2.62	120.37	115.83
4	D	202	KFL	C16-C17-N18	-2.46	109.91	113.03
4	B	202	KFL	C23-C24-N27	2.45	111.72	108.69
4	B	202	KFL	C23-C05-N06	-2.45	107.26	110.29
4	A	202	KFL	C16-C17-N18	-2.40	109.98	113.03
4	B	202	KFL	C09-C07-N06	2.22	119.69	115.83
4	C	201	KFL	C23-C05-N06	-2.09	107.71	110.29
4	A	202	KFL	C13-C14-C22	-2.07	108.70	114.73
4	B	202	KFL	O08-C07-N06	-2.05	119.49	122.95
4	D	202	KFL	C13-C14-C22	-2.01	108.87	114.73
4	C	201	KFL	C12-C13-C14	-2.01	109.79	113.86

There are no chirality outliers.

All (21) torsion outliers are listed below:

Mol	Chain	Res	Type	Atoms
4	B	202	KFL	C12-C13-C14-C22
4	B	202	KFL	C12-C13-C14-S15
4	C	201	KFL	C12-C13-C14-C22
4	C	201	KFL	C12-C13-C14-S15
4	D	202	KFL	C11-C12-C13-C14
3	D	201	NAG	C4-C5-C6-O6
3	D	201	NAG	O5-C5-C6-O6
4	A	202	KFL	C07-C09-C10-C11
3	A	201	NAG	O5-C5-C6-O6

*Continued on next page...*

*Continued from previous page...*

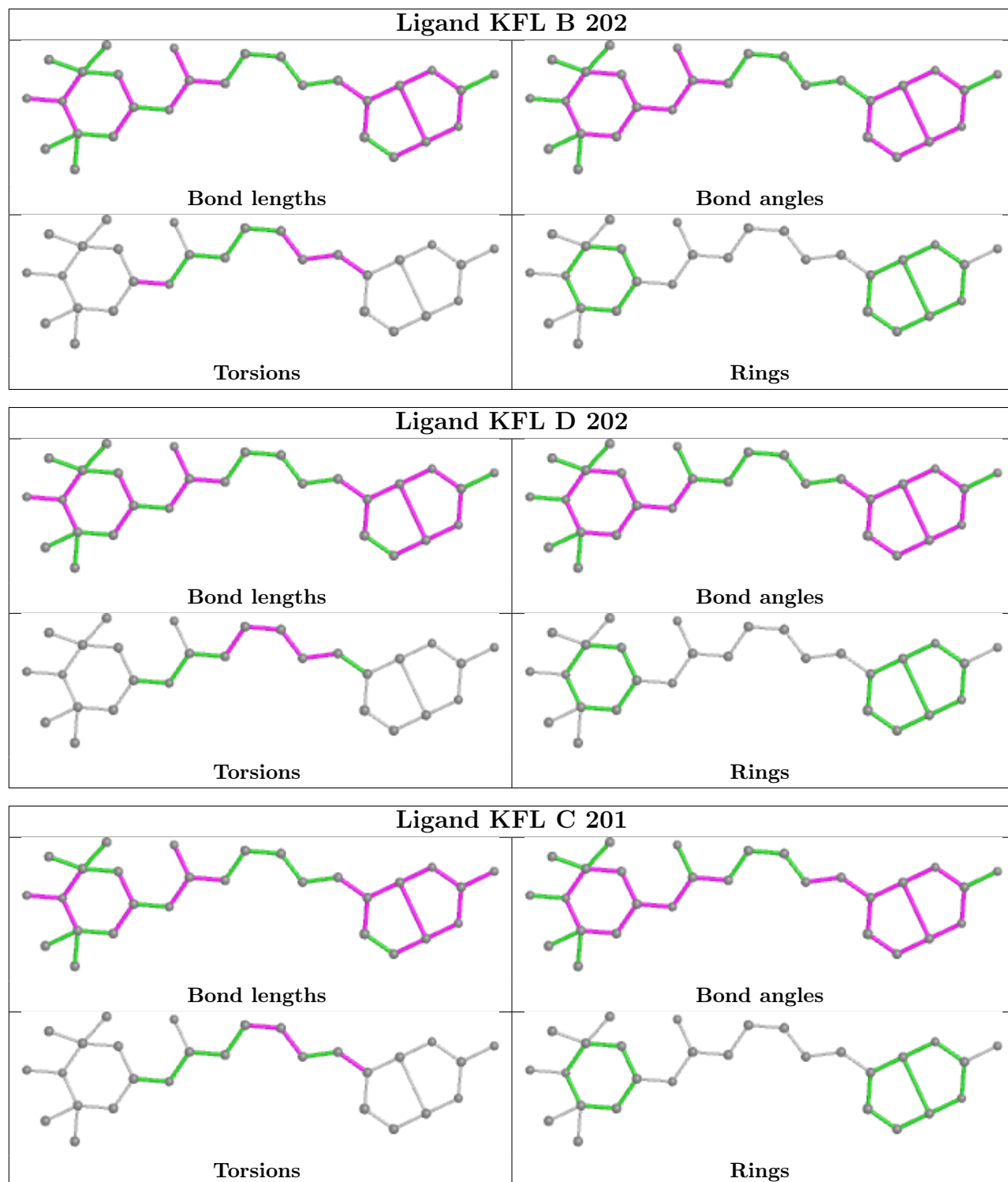
Mol	Chain	Res	Type	Atoms
3	A	201	NAG	C4-C5-C6-O6
4	A	202	KFL	C10-C11-C12-C13
4	B	202	KFL	C10-C11-C12-C13
4	D	202	KFL	C10-C11-C12-C13
4	C	201	KFL	C09-C10-C11-C12
4	D	202	KFL	C09-C10-C11-C12
4	C	201	KFL	C10-C11-C12-C13
4	B	202	KFL	C11-C12-C13-C14
4	D	202	KFL	C07-C09-C10-C11
4	B	202	KFL	C04-C05-N06-C07
4	A	202	KFL	C09-C10-C11-C12
4	B	202	KFL	C23-C05-N06-C07

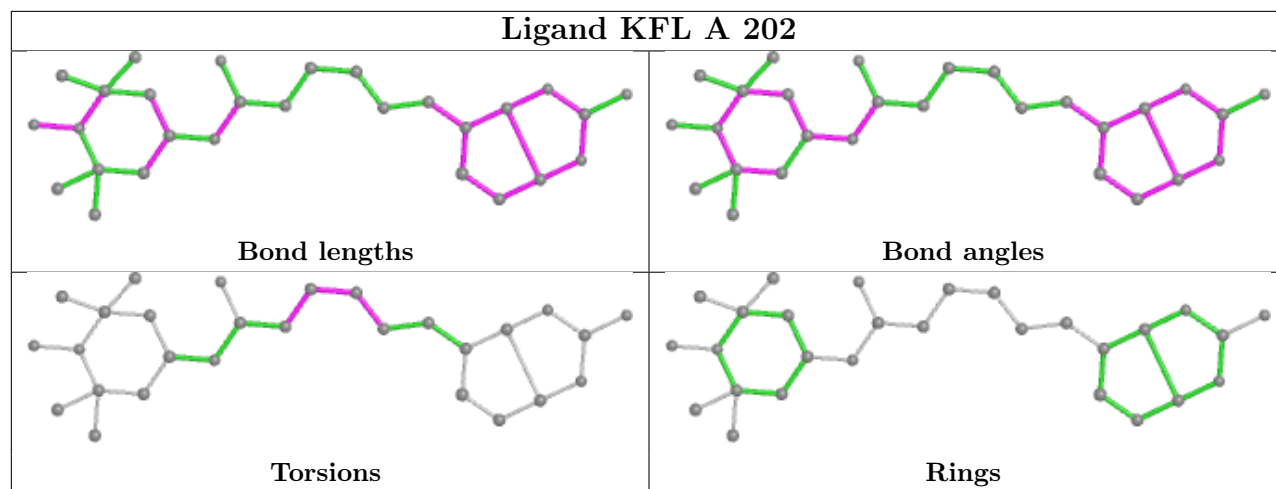
There are no ring outliers.

5 monomers are involved in 8 short contacts:

Mol	Chain	Res	Type	Clashes	Symm-Clashes
4	B	202	KFL	1	0
4	D	202	KFL	3	0
3	B	201	NAG	2	0
4	C	201	KFL	1	0
4	A	202	KFL	1	0

The following is a two-dimensional graphical depiction of Mogul quality analysis of bond lengths, bond angles, torsion angles, and ring geometry for all instances of the Ligand of Interest. In addition, ligands with molecular weight > 250 and outliers as shown on the validation Tables will also be included. For torsion angles, if less than 5% of the Mogul distribution of torsion angles is within 10 degrees of the torsion angle in question, then that torsion angle is considered an outlier. Any bond that is central to one or more torsion angles identified as an outlier by Mogul will be highlighted in the graph. For rings, the root-mean-square deviation (RMSD) between the ring in question and similar rings identified by Mogul is calculated over all ring torsion angles. If the average RMSD is greater than 60 degrees and the minimal RMSD between the ring in question and any Mogul-identified rings is also greater than 60 degrees, then that ring is considered an outlier. The outliers are highlighted in purple. The color gray indicates Mogul did not find sufficient equivalents in the CSD to analyse the geometry.





## 5.7 Other polymers [i](#)

There are no such residues in this entry.

## 5.8 Polymer linkage issues [i](#)

There are no chain breaks in this entry.



## 6 Fit of model and data

### 6.1 Protein, DNA and RNA chains

In the following table, the column labelled ‘#RSRZ > 2’ contains the number (and percentage) of RSRZ outliers, followed by percent RSRZ outliers for the chain as percentile scores relative to all X-ray entries and entries of similar resolution. The OWAB column contains the minimum, median, 95<sup>th</sup> percentile and maximum values of the occupancy-weighted average B-factor per residue. The column labelled ‘Q < 0.9’ lists the number of (and percentage) of residues with an average occupancy less than 0.9.

Mol	Chain	Analysed	<RSRZ>	#RSRZ>2	OWAB(Å <sup>2</sup> )	Q<0.9
1	A	121/152 (79%)	0.43	3 (2%) 57 66	33, 47, 67, 91	0
1	B	111/152 (73%)	0.52	7 (6%) 20 28	35, 48, 67, 103	0
1	C	119/152 (78%)	0.26	7 (5%) 22 31	35, 47, 71, 98	0
1	D	121/152 (79%)	0.35	7 (5%) 23 32	37, 47, 70, 106	0
All	All	472/608 (77%)	0.39	24 (5%) 28 39	33, 48, 70, 106	0

All (24) RSRZ outliers are listed below:

Mol	Chain	Res	Type	RSRZ
1	C	111	ARG	8.3
1	D	111	ARG	7.6
1	C	112	ASN	6.1
1	B	112	ASN	5.5
1	D	112	ASN	5.2
1	B	110	ASP	4.2
1	A	111	ARG	4.0
1	B	114	LYS	3.7
1	B	111	ARG	3.6
1	D	82	LYS	3.4
1	C	83	ARG	3.3
1	D	110	ASP	3.2
1	D	58	ILE	3.1
1	C	110	ASP	2.9
1	C	114	LYS	2.8
1	B	109	ILE	2.8
1	B	113	GLY	2.7
1	C	113	GLY	2.5
1	A	110	ASP	2.5
1	D	65	SER	2.2
1	C	84	THR	2.1

*Continued on next page...*

*Continued from previous page...*

Mol	Chain	Res	Type	RSRZ
1	D	147	LEU	2.1
1	A	128	ASN	2.1
1	B	116	VAL	2.1

## 6.2 Non-standard residues in protein, DNA, RNA chains [i](#)

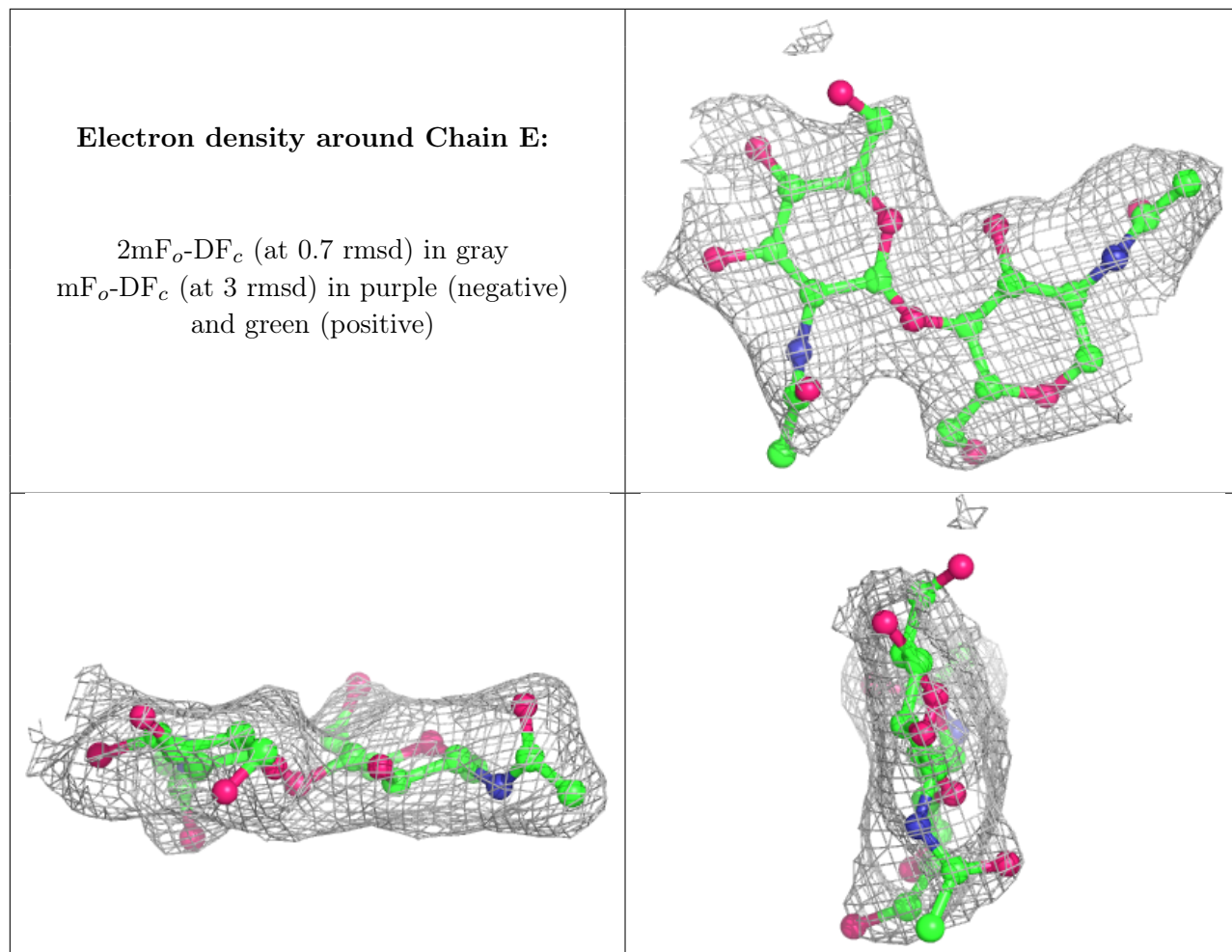
There are no non-standard protein/DNA/RNA residues in this entry.

## 6.3 Carbohydrates [i](#)

In the following table, the Atoms column lists the number of modelled atoms in the group and the number defined in the chemical component dictionary. The B-factors column lists the minimum, median, 95<sup>th</sup> percentile and maximum values of B factors of atoms in the group. The column labelled 'Q< 0.9' lists the number of atoms with occupancy less than 0.9.

Mol	Type	Chain	Res	Atoms	RSCC	RSR	B-factors(Å <sup>2</sup> )	Q<0.9
2	NAG	E	2	14/15	0.80	0.23	71,81,90,91	0
2	NAG	E	1	14/15	0.91	0.12	55,64,77,77	0

The following is a graphical depiction of the model fit to experimental electron density for oligosaccharide. Each fit is shown from different orientation to approximate a three-dimensional view.



## 6.4 Ligands [i](#)

In the following table, the Atoms column lists the number of modelled atoms in the group and the number defined in the chemical component dictionary. The B-factors column lists the minimum, median, 95<sup>th</sup> percentile and maximum values of B factors of atoms in the group. The column labelled 'Q< 0.9' lists the number of atoms with occupancy less than 0.9.

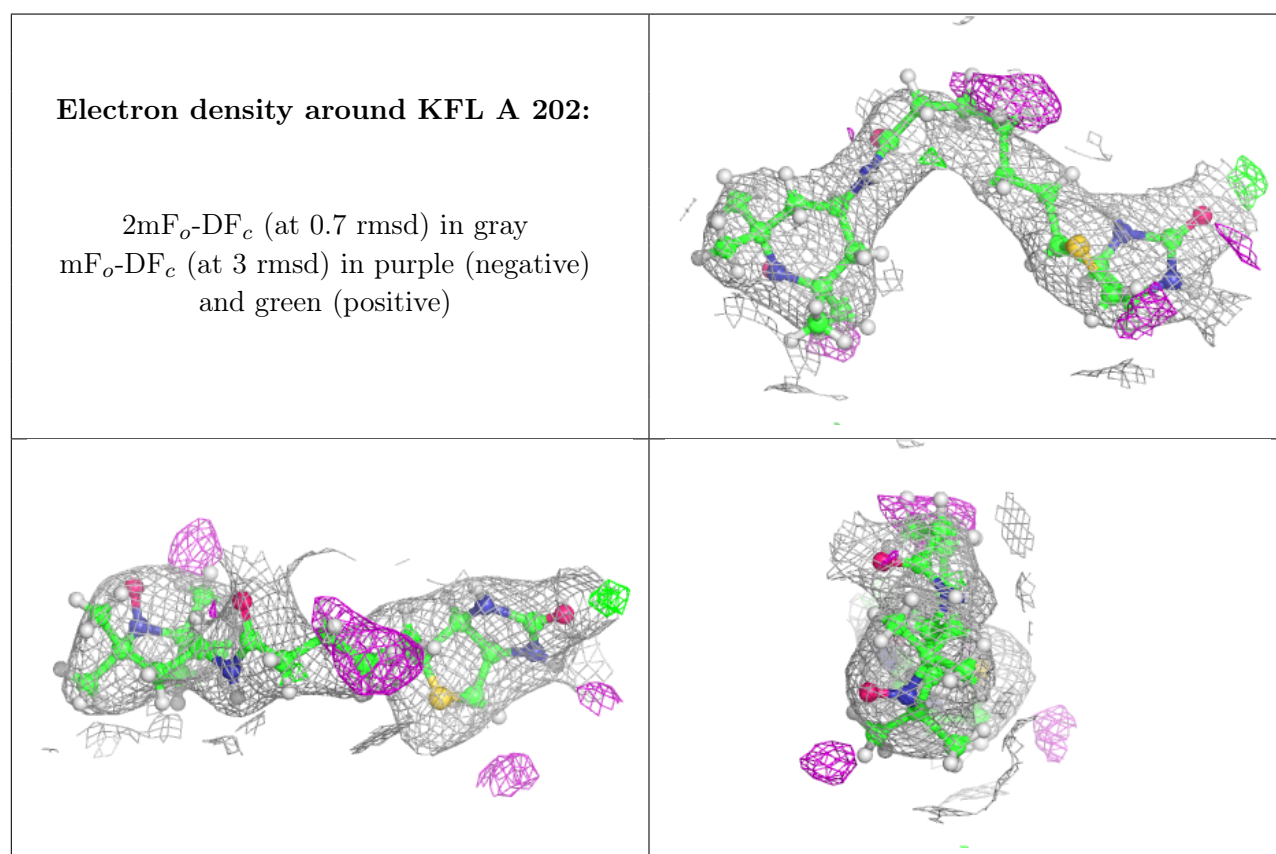
Mol	Type	Chain	Res	Atoms	RSCC	RSR	B-factors(Å <sup>2</sup> )	Q<0.9
6	NA	B	203	1/1	0.75	0.20	59,59,59,59	0
3	NAG	A	201	14/15	0.83	0.14	53,67,79,83	0
3	NAG	D	201	14/15	0.88	0.18	56,70,83,88	0
4	KFL	A	202	28/28	0.90	0.19	39,58,75,76	0
4	KFL	B	202	28/28	0.91	0.19	40,66,82,82	0
3	NAG	B	201	14/15	0.92	0.25	63,72,74,76	0
4	KFL	C	201	28/28	0.93	0.15	36,58,77,81	0
6	NA	C	204	1/1	0.93	0.18	57,57,57,57	0
4	KFL	D	202	28/28	0.94	0.17	40,61,82,82	0
6	NA	A	205	1/1	0.94	0.17	74,74,74,74	0

*Continued on next page...*

Continued from previous page...

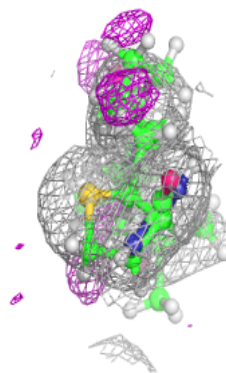
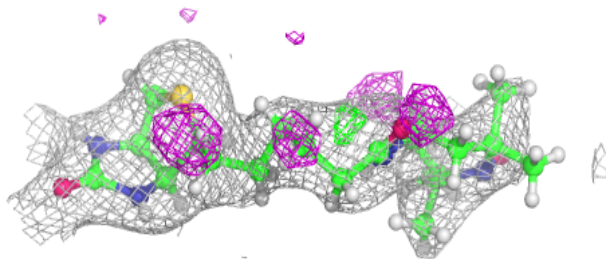
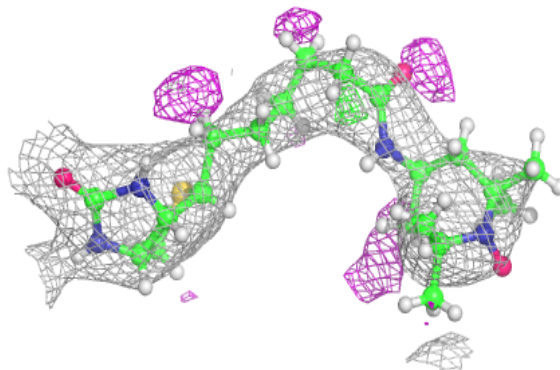
Mol	Type	Chain	Res	Atoms	RSCC	RSR	B-factors( $\text{\AA}^2$ )	Q<0.9
5	ZN	A	204	1/1	0.96	0.10	55,55,55,55	0
6	NA	D	203	1/1	0.97	0.10	61,61,61,61	0
5	ZN	C	202	1/1	0.98	0.09	54,54,54,54	0
5	ZN	A	203	1/1	0.99	0.11	51,51,51,51	0
5	ZN	C	203	1/1	0.99	0.09	52,52,52,52	0

The following is a graphical depiction of the model fit to experimental electron density of all instances of the Ligand of Interest. In addition, ligands with molecular weight > 250 and outliers as shown on the geometry validation Tables will also be included. Each fit is shown from different orientation to approximate a three-dimensional view.

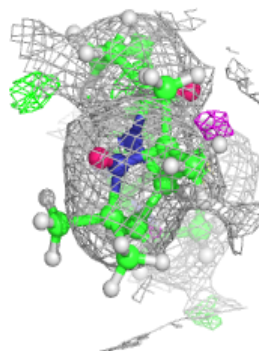
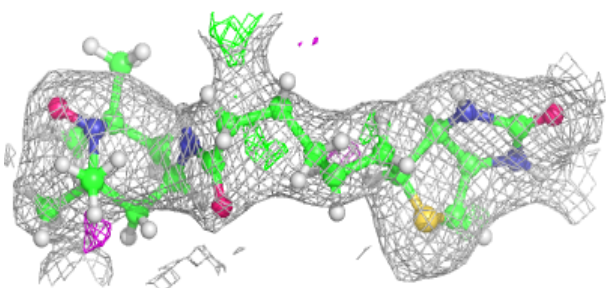
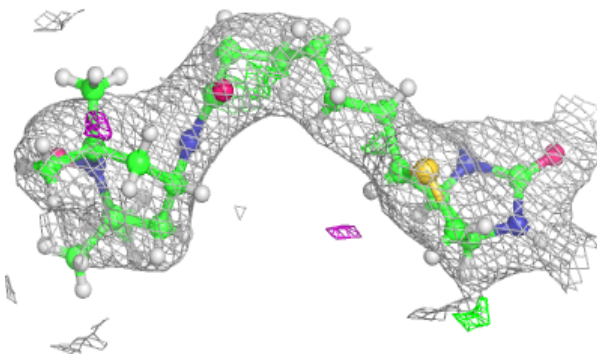


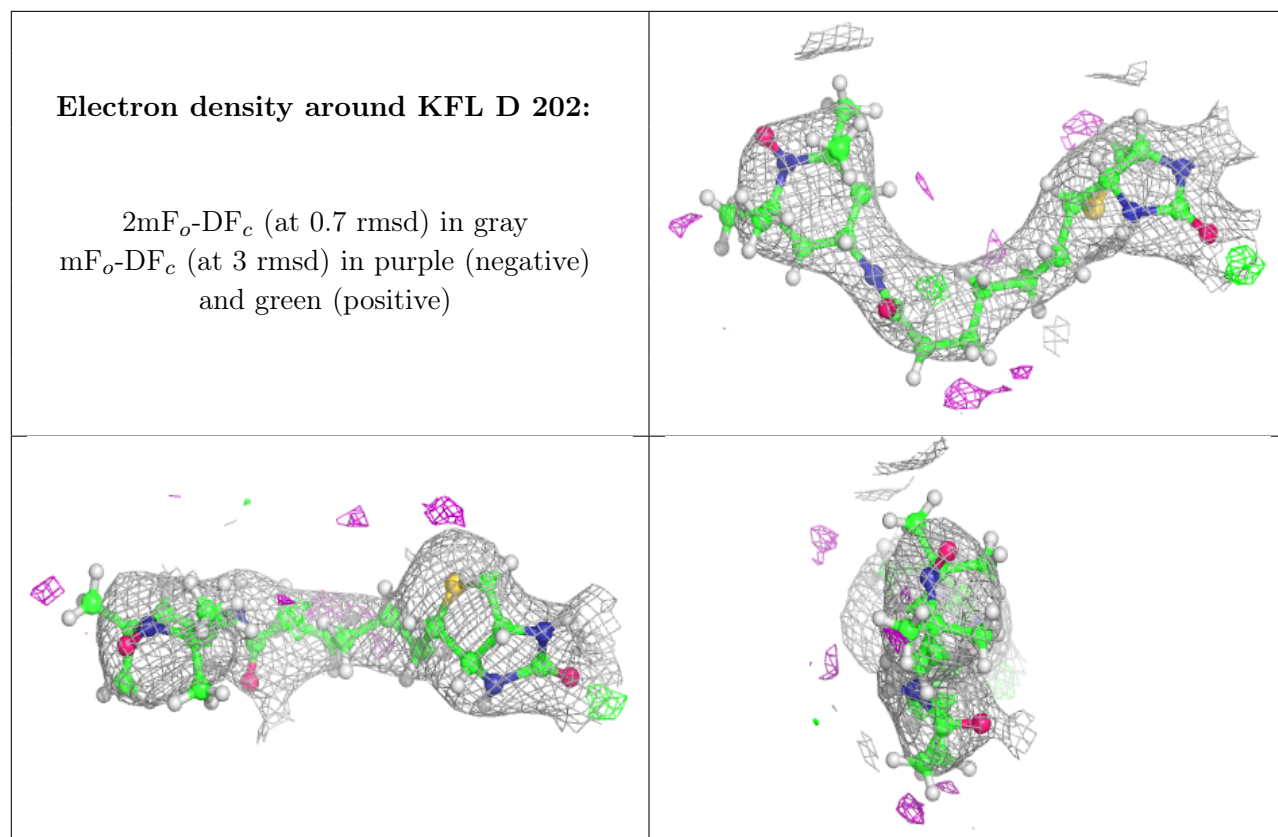
**Electron density around KFL B 202:**

$2mF_o-DF_c$  (at 0.7 rmsd) in gray  
 $mF_o-DF_c$  (at 3 rmsd) in purple (negative)  
and green (positive)

**Electron density around KFL C 201:**

$2mF_o-DF_c$  (at 0.7 rmsd) in gray  
 $mF_o-DF_c$  (at 3 rmsd) in purple (negative)  
and green (positive)





## 6.5 Other polymers [i](#)

There are no such residues in this entry.