



Full wwPDB X-ray Structure Validation Report ⓘ

Mar 13, 2018 – 12:11 pm GMT

PDB ID : 3ZOS
Title : Structure of the DDR1 kinase domain in complex with ponatinib
Authors : Canning, P.; Elkins, J.M.; Goubin, S.; Mahajan, P.; Bradley, A.; Coutandin, D.; von Delft, F.; Arrowsmith, C.H.; Edwards, A.M.; Bountra, C.; Bullock, A.
Deposited on : 2013-02-22
Resolution : 1.92 Å (reported)

This is a Full wwPDB X-ray Structure Validation Report for a publicly released PDB entry.

We welcome your comments at validation@mail.wwpdb.org

A user guide is available at

<https://www.wwpdb.org/validation/2017/XrayValidationReportHelp>

with specific help available everywhere you see the ⓘ symbol.

The following versions of software and data (see [references ⓘ](#)) were used in the production of this report:

MolProbity : 4.02b-467
Mogul : 1.7.3 (157068), CSD as539be (2018)
Xtriage (Phenix) : 1.13
EDS : trunk31020
Percentile statistics : 20171227.v01 (using entries in the PDB archive December 27th 2017)
Refmac : 5.8.0158
CCP4 : 7.0 (Gargrove)
Ideal geometry (proteins) : Engh & Huber (2001)
Ideal geometry (DNA, RNA) : Parkinson et al. (1996)
Validation Pipeline (wwPDB-VP) : trunk31020

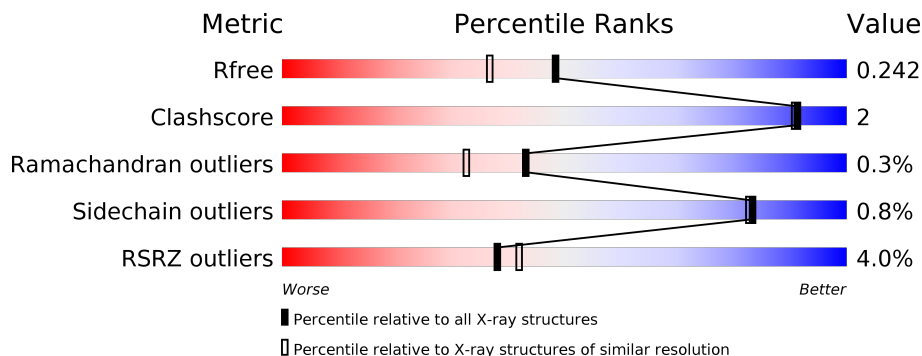
1 Overall quality at a glance

The following experimental techniques were used to determine the structure:

X-RAY DIFFRACTION

The reported resolution of this entry is 1.92 Å.

Percentile scores (ranging between 0-100) for global validation metrics of the entry are shown in the following graphic. The table shows the number of entries on which the scores are based.



Metric	Whole archive (#Entries)	Similar resolution (#Entries, resolution range(Å))
R_{free}	111664	6904 (1.94-1.90)
Clashscore	122126	7577 (1.94-1.90)
Ramachandran outliers	120053	7491 (1.94-1.90)
Sidechain outliers	120020	7491 (1.94-1.90)
RSRZ outliers	108989	6759 (1.94-1.90)

The table below summarises the geometric issues observed across the polymeric chains and their fit to the electron density. The red, orange, yellow and green segments on the lower bar indicate the fraction of residues that contain outliers for ≥ 3 , 2, 1 and 0 types of geometric quality criteria. A grey segment represents the fraction of residues that are not modelled. The numeric value for each fraction is indicated below the corresponding segment, with a dot representing fractions $\leq 5\%$. The upper red bar (where present) indicates the fraction of residues that have poor fit to the electron density. The numeric value is given above the bar.

Mol	Chain	Length	Quality of chain
1	A	315	<p>4% (poor fit), 91% (0-1 outliers), 7% (2-3 outliers), 0% (not modelled)</p>
1	B	315	<p>3% (poor fit), 90% (0-1 outliers), 7% (2-3 outliers), 0% (not modelled)</p>

2 Entry composition [i](#)

There are 4 unique types of molecules in this entry. The entry contains 5224 atoms, of which 0 are hydrogens and 0 are deuteriums.

In the tables below, the ZeroOcc column contains the number of atoms modelled with zero occupancy, the AltConf column contains the number of residues with at least one atom in alternate conformation and the Trace column contains the number of residues modelled with at most 2 atoms.

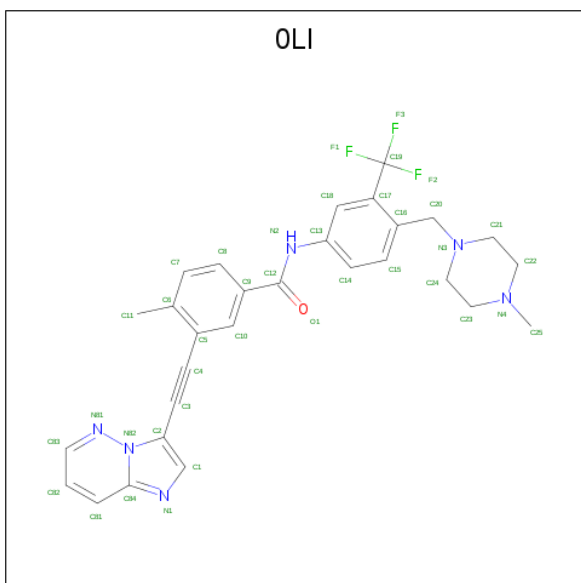
- Molecule 1 is a protein called EPITHELIAL DISCOIDIN DOMAIN-CONTAINING RECEPTOR 1.

Mol	Chain	Residues	Atoms					ZeroOcc	AltConf	Trace
			Total	C	N	O	S			
1	A	301	2381	1520	412	431	18	0	3	0
1	B	303	2378	1522	409	429	18	0	2	0

There are 4 discrepancies between the modelled and reference sequences:

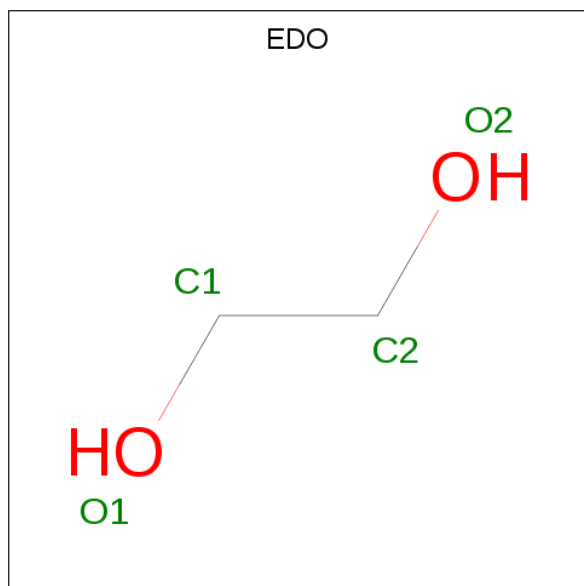
Chain	Residue	Modelled	Actual	Comment	Reference
A	-1	SER	-	expression tag	UNP Q08345
A	0	MET	-	expression tag	UNP Q08345
B	-1	SER	-	expression tag	UNP Q08345
B	0	MET	-	expression tag	UNP Q08345

- Molecule 2 is 3-(imidazo[1,2-b]pyridazin-3-ylethynyl)-4-methyl-N-{4-[(4-methylpiperazin-1-yl)methyl]-3-(trifluoromethyl)phenyl}benzamide (three-letter code: OLI) (formula: C₂₉H₂₇F₃N₆O).



Mol	Chain	Residues	Atoms					ZeroOcc	AltConf
2	A	1	Total	C	F	N	O	0	0
			39	29	3	6	1		
2	A	1	Total	C	F	N	O	0	0
			39	29	3	6	1		
2	B	1	Total	C	F	N	O	0	0
			39	29	3	6	1		

- Molecule 3 is 1,2-ETHANEDIOL (three-letter code: EDO) (formula: C₂H₆O₂).



Mol	Chain	Residues	Atoms			ZeroOcc	AltConf
3	A	1	Total	C	O	0	0
			4	2	2		
3	A	1	Total	C	O	0	0
			4	2	2		
3	B	1	Total	C	O	0	0
			4	2	2		

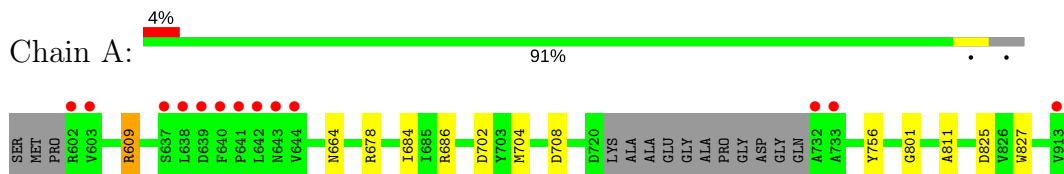
- Molecule 4 is water.

Mol	Chain	Residues	Atoms		ZeroOcc	AltConf
4	A	171	Total	O	0	0
			171	171		
4	B	165	Total	O	0	0
			165	165		

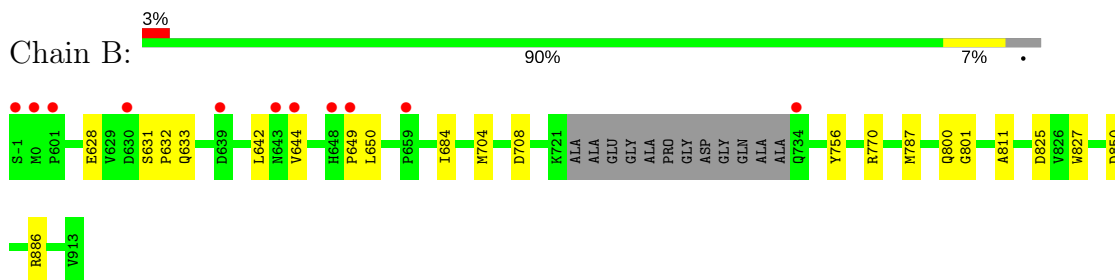
3 Residue-property plots [i](#)

These plots are drawn for all protein, RNA and DNA chains in the entry. The first graphic for a chain summarises the proportions of the various outlier classes displayed in the second graphic. The second graphic shows the sequence view annotated by issues in geometry and electron density. Residues are color-coded according to the number of geometric quality criteria for which they contain at least one outlier: green = 0, yellow = 1, orange = 2 and red = 3 or more. A red dot above a residue indicates a poor fit to the electron density ($RSRZ > 2$). Stretches of 2 or more consecutive residues without any outlier are shown as a green connector. Residues present in the sample, but not in the model, are shown in grey.

- Molecule 1: EPITHELIAL DISCOIDIN DOMAIN-CONTAINING RECEPTOR 1



- Molecule 1: EPITHELIAL DISCOIDIN DOMAIN-CONTAINING RECEPTOR 1



4 Data and refinement statistics

Property	Value	Source
Space group	P 1 21 1	Depositor
Cell constants a, b, c, α , β , γ	68.95Å 61.73Å 80.19Å 90.00° 104.40° 90.00°	Depositor
Resolution (Å)	45.41 – 1.92 45.37 – 1.92	Depositor EDS
% Data completeness (in resolution range)	98.6 (45.41-1.92) 98.6 (45.37-1.92)	Depositor EDS
R_{merge}	0.14	Depositor
R_{sym}	(Not available)	Depositor
$\langle I/\sigma(I) \rangle$ ¹	5.20 (at 1.92Å)	Xtrriage
Refinement program	REFMAC 5.7.0032	Depositor
R, R_{free}	0.206 , 0.234 0.213 , 0.242	Depositor DCC
R_{free} test set	2507 reflections (5.08%)	wwPDB-VP
Wilson B-factor (Å ²)	15.8	Xtrriage
Anisotropy	0.667	Xtrriage
Bulk solvent k_{sol} (e/Å ³), B_{sol} (Å ²)	0.34 , 43.1	EDS
L-test for twinning ²	$\langle L \rangle = 0.49$, $\langle L^2 \rangle = 0.32$	Xtrriage
Estimated twinning fraction	No twinning to report.	Xtrriage
F_o, F_c correlation	0.93	EDS
Total number of atoms	5224	wwPDB-VP
Average B, all atoms (Å ²)	23.0	wwPDB-VP

Xtrriage's analysis on translational NCS is as follows: *The largest off-origin peak in the Patterson function is 5.37% of the height of the origin peak. No significant pseudotranslation is detected.*

¹Intensities estimated from amplitudes.

²Theoretical values of $\langle |L| \rangle$, $\langle L^2 \rangle$ for acentric reflections are 0.5, 0.333 respectively for untwinned datasets, and 0.375, 0.2 for perfectly twinned datasets.

5 Model quality [i](#)

5.1 Standard geometry [i](#)

Bond lengths and bond angles in the following residue types are not validated in this section: EDO, OLI

The Z score for a bond length (or angle) is the number of standard deviations the observed value is removed from the expected value. A bond length (or angle) with $|Z| > 5$ is considered an outlier worth inspection. RMSZ is the root-mean-square of all Z scores of the bond lengths (or angles).

Mol	Chain	Bond lengths		Bond angles	
		RMSZ	# Z >5	RMSZ	# Z >5
1	A	0.60	0/2444	0.77	4/3317 (0.1%)
1	B	0.63	0/2439	0.73	1/3315 (0.0%)
All	All	0.62	0/4883	0.75	5/6632 (0.1%)

There are no bond length outliers.

All (5) bond angle outliers are listed below:

Mol	Chain	Res	Type	Atoms	Z	Observed(°)	Ideal(°)
1	A	825	ASP	CB-CG-OD1	6.00	123.70	118.30
1	A	609	ARG	NE-CZ-NH2	-5.93	117.33	120.30
1	A	609	ARG	NE-CZ-NH1	5.72	123.16	120.30
1	A	686	ARG	NE-CZ-NH2	-5.52	117.54	120.30
1	B	825	ASP	CB-CG-OD1	5.13	122.92	118.30

There are no chirality outliers.

There are no planarity outliers.

5.2 Too-close contacts [i](#)

In the following table, the Non-H and H(model) columns list the number of non-hydrogen atoms and hydrogen atoms in the chain respectively. The H(added) column lists the number of hydrogen atoms added and optimized by MolProbity. The Clashes column lists the number of clashes within the asymmetric unit, whereas Symm-Clashes lists symmetry related clashes.

Mol	Chain	Non-H	H(model)	H(added)	Clashes	Symm-Clashes
1	A	2381	0	2314	6	0
1	B	2378	0	2301	12	0
2	A	78	0	54	0	0
2	B	39	0	27	0	0

Continued on next page...

Continued from previous page...

Mol	Chain	Non-H	H(model)	H(added)	Clashes	Symm-Clashes
3	A	8	0	12	0	0
3	B	4	0	6	0	0
4	A	171	0	0	3	0
4	B	165	0	0	3	0
All	All	5224	0	4714	17	0

The all-atom clashscore is defined as the number of clashes found per 1000 atoms (including hydrogen atoms). The all-atom clashscore for this structure is 2.

All (17) close contacts within the same asymmetric unit are listed below, sorted by their clash magnitude.

Atom-1	Atom-2	Interatomic distance (Å)	Clash overlap (Å)
1:B:787:MET:O	4:B:2015:HOH:O	1.98	0.81
1:B:770:ARG:NE	4:B:2081:HOH:O	2.17	0.77
1:B:628:GLU:OE2	1:B:649:PRO:HB3	2.00	0.61
1:B:642:LEU:HD22	1:B:650:LEU:HD21	1.85	0.58
1:A:664:ASN:HB2	1:B:850:ASP:OD2	2.04	0.57
1:A:609:ARG:HD2	4:A:2007:HOH:O	2.06	0.55
1:B:628:GLU:OE2	1:B:649:PRO:CB	2.58	0.52
1:B:684:ILE:HD12	1:B:756:TYR:CD2	2.48	0.48
1:A:684:ILE:HD12	1:A:756:TYR:CD1	2.51	0.46
4:A:2087:HOH:O	1:B:800:GLN:HB2	2.17	0.45
1:A:811:ALA:HA	1:A:827:TRP:CE2	2.53	0.44
1:B:633:GLN:OE1	1:B:644[B]:VAL:HG21	2.19	0.43
1:B:631:SER:N	1:B:632:PRO:CD	2.82	0.43
1:B:811:ALA:HA	1:B:827:TRP:CE2	2.54	0.42
1:A:678:ARG:NH2	4:A:2037:HOH:O	2.53	0.42
1:B:886:ARG:NH1	4:B:2148:HOH:O	2.54	0.40

There are no symmetry-related clashes.

5.3 Torsion angles [i](#)

5.3.1 Protein backbone [i](#)

In the following table, the Percentiles column shows the percent Ramachandran outliers of the chain as a percentile score with respect to all X-ray entries followed by that with respect to entries of similar resolution.

The Analysed column shows the number of residues for which the backbone conformation was analysed, and the total number of residues.

Mol	Chain	Analysed	Favoured	Allowed	Outliers	Percentiles	
1	A	300/315 (95%)	292 (97%)	7 (2%)	1 (0%)	43	32
1	B	301/315 (96%)	293 (97%)	7 (2%)	1 (0%)	43	32
All	All	601/630 (95%)	585 (97%)	14 (2%)	2 (0%)	43	32

All (2) Ramachandran outliers are listed below:

Mol	Chain	Res	Type
1	A	801	GLY
1	B	801	GLY

5.3.2 Protein sidechains [i](#)

In the following table, the Percentiles column shows the percent sidechain outliers of the chain as a percentile score with respect to all X-ray entries followed by that with respect to entries of similar resolution.

The Analysed column shows the number of residues for which the sidechain conformation was analysed, and the total number of residues.

Mol	Chain	Analysed	Rotameric	Outliers	Percentiles	
1	A	250/269 (93%)	248 (99%)	2 (1%)	83	82
1	B	248/269 (92%)	246 (99%)	2 (1%)	83	82
All	All	498/538 (93%)	494 (99%)	4 (1%)	83	82

All (4) residues with a non-rotameric sidechain are listed below:

Mol	Chain	Res	Type
1	A	704	MET
1	A	708	ASP
1	B	704	MET
1	B	708	ASP

Some sidechains can be flipped to improve hydrogen bonding and reduce clashes. There are no such sidechains identified.

5.3.3 RNA [i](#)

There are no RNA molecules in this entry.

5.4 Non-standard residues in protein, DNA, RNA chains [i](#)

There are no non-standard protein/DNA/RNA residues in this entry.

5.5 Carbohydrates [i](#)

There are no carbohydrates in this entry.

5.6 Ligand geometry [i](#)

6 ligands are modelled in this entry.

In the following table, the Counts columns list the number of bonds (or angles) for which Mogul statistics could be retrieved, the number of bonds (or angles) that are observed in the model and the number of bonds (or angles) that are defined in the Chemical Component Dictionary. The Link column lists molecule types, if any, to which the group is linked. The Z score for a bond length (or angle) is the number of standard deviations the observed value is removed from the expected value. A bond length (or angle) with $|Z| > 2$ is considered an outlier worth inspection. RMSZ is the root-mean-square of all Z scores of the bond lengths (or angles).

Mol	Type	Chain	Res	Link	Bond lengths			Bond angles		
					Counts	RMSZ	# Z > 2	Counts	RMSZ	# Z > 2
2	OLI	A	1000	-	40,43,43	1.38	5 (12%)	51,62,62	1.39	6 (11%)
3	EDO	A	1001	-	3,3,3	0.47	0	2,2,2	0.34	0
3	EDO	A	1002	-	3,3,3	0.41	0	2,2,2	1.08	0
2	OLI	A	1004	-	40,43,43	1.60	8 (20%)	51,62,62	2.15	14 (27%)
2	OLI	B	1000	-	40,43,43	1.55	5 (12%)	51,62,62	1.58	12 (23%)
3	EDO	B	1001	-	3,3,3	0.47	0	2,2,2	0.38	0

In the following table, the Chirals column lists the number of chiral outliers, the number of chiral centers analysed, the number of these observed in the model and the number defined in the Chemical Component Dictionary. Similar counts are reported in the Torsion and Rings columns. '-' means no outliers of that kind were identified.

Mol	Type	Chain	Res	Link	Chirals	Torsions	Rings
2	OLI	A	1000	-	-	0/20/33/33	0/5/5/5
3	EDO	A	1001	-	-	0/1/1/1	0/0/0/0
3	EDO	A	1002	-	-	0/1/1/1	0/0/0/0
2	OLI	A	1004	-	-	0/20/33/33	0/5/5/5
2	OLI	B	1000	-	-	0/20/33/33	0/5/5/5
3	EDO	B	1001	-	-	0/1/1/1	0/0/0/0

All (18) bond length outliers are listed below:

Mol	Chain	Res	Type	Atoms	Z	Observed(Å)	Ideal(Å)
2	B	1000	OLI	C5-C6	-2.26	1.35	1.40
2	A	1000	OLI	C1-N1	-2.02	1.32	1.36
2	A	1000	OLI	C5-C4	2.06	1.47	1.43
2	A	1004	OLI	C1-C2	2.11	1.41	1.37
2	A	1004	OLI	C10-C5	2.22	1.42	1.39
2	A	1004	OLI	C20-C16	2.24	1.55	1.51
2	A	1004	OLI	C8-C7	2.30	1.42	1.38
2	A	1004	OLI	C2-C3	2.59	1.49	1.44
2	B	1000	OLI	C12-N2	2.98	1.43	1.35
2	B	1000	OLI	C5-C4	3.03	1.49	1.43
2	A	1004	OLI	C84-N1	3.20	1.36	1.33
2	A	1000	OLI	C84-N1	3.22	1.36	1.33
2	A	1000	OLI	C12-N2	3.36	1.44	1.35
2	A	1000	OLI	C10-C5	3.60	1.44	1.39
2	B	1000	OLI	C10-C5	3.75	1.45	1.39
2	A	1004	OLI	C12-N2	3.82	1.45	1.35
2	A	1004	OLI	C5-C4	4.19	1.51	1.43
2	B	1000	OLI	C84-N1	4.37	1.37	1.33

All (32) bond angle outliers are listed below:

Mol	Chain	Res	Type	Atoms	Z	Observed(°)	Ideal(°)
2	A	1004	OLI	F1-C19-C17	-4.93	103.94	112.70
2	B	1000	OLI	C10-C5-C4	-4.85	111.47	120.24
2	A	1004	OLI	C10-C5-C4	-4.38	112.32	120.24
2	A	1000	OLI	C10-C5-C4	-4.04	112.95	120.24
2	A	1004	OLI	F2-C19-C17	-3.89	105.80	112.70
2	A	1000	OLI	F3-C19-C17	-3.45	106.56	112.70
2	A	1004	OLI	C20-C16-C15	-3.12	113.98	120.13
2	B	1000	OLI	C20-C16-C15	-2.85	114.52	120.13
2	B	1000	OLI	F3-C19-C17	-2.52	108.22	112.70
2	A	1000	OLI	C24-C23-N4	-2.40	108.07	110.80
2	A	1004	OLI	F3-C19-C17	-2.34	108.54	112.70
2	B	1000	OLI	C9-C10-C5	-2.30	118.59	120.60
2	B	1000	OLI	C82-C81-C84	-2.28	117.92	120.24
2	A	1000	OLI	C20-C16-C15	-2.15	115.91	120.13
2	A	1000	OLI	C82-C81-C84	-2.10	118.10	120.24
2	A	1004	OLI	C82-C83-N81	-2.01	119.87	123.58
2	B	1000	OLI	C21-C22-N4	2.04	113.12	110.80
2	B	1000	OLI	C9-C12-N2	2.14	120.50	115.91
2	A	1000	OLI	C6-C5-C4	2.15	123.76	120.59
2	A	1004	OLI	C81-C82-C83	2.23	121.87	118.92
2	A	1004	OLI	C15-C14-C13	2.25	122.95	120.30

Continued on next page...

Continued from previous page...

Mol	Chain	Res	Type	Atoms	Z	Observed(°)	Ideal(°)
2	B	1000	OLI	C23-C24-N3	2.32	115.20	110.64
2	B	1000	OLI	C23-N4-C22	2.34	112.87	109.53
2	A	1004	OLI	C25-N4-C22	2.77	114.81	110.67
2	B	1000	OLI	C19-C17-C16	2.82	124.01	121.10
2	B	1000	OLI	C15-C16-C17	2.85	121.44	118.74
2	A	1004	OLI	C22-C21-N3	2.89	116.34	110.64
2	B	1000	OLI	C6-C5-C4	2.91	124.87	120.59
2	A	1004	OLI	C6-C5-C4	3.41	125.60	120.59
2	A	1004	OLI	C21-C22-N4	3.58	114.87	110.80
2	A	1004	OLI	C25-N4-C23	5.18	118.40	110.67
2	A	1004	OLI	C20-N3-C24	5.22	121.99	111.06

There are no chirality outliers.

There are no torsion outliers.

There are no ring outliers.

No monomer is involved in short contacts.

5.7 Other polymers [i](#)

There are no such residues in this entry.

5.8 Polymer linkage issues [i](#)

There are no chain breaks in this entry.

6 Fit of model and data [i](#)

6.1 Protein, DNA and RNA chains [i](#)

In the following table, the column labelled ‘#RSRZ > 2’ contains the number (and percentage) of RSRZ outliers, followed by percent RSRZ outliers for the chain as percentile scores relative to all X-ray entries and entries of similar resolution. The OWAB column contains the minimum, median, 95th percentile and maximum values of the occupancy-weighted average B-factor per residue. The column labelled ‘Q < 0.9’ lists the number of (and percentage) of residues with an average occupancy less than 0.9.

Mol	Chain	Analysed	<RSRZ>	#RSRZ>2	OWAB(Å ²)	Q<0.9
1	A	301/315 (95%)	0.08	13 (4%) 35 39	9, 23, 52, 73	0
1	B	303/315 (96%)	0.08	11 (3%) 42 46	8, 21, 42, 68	0
All	All	604/630 (95%)	0.08	24 (3%) 38 42	8, 22, 45, 73	0

All (24) RSRZ outliers are listed below:

Mol	Chain	Res	Type	RSRZ
1	A	640	PHE	5.4
1	B	659	PRO	4.7
1	B	-1	SER	4.4
1	A	639	ASP	4.1
1	B	0	MET	4.1
1	A	913	VAL	3.7
1	A	637	SER	3.5
1	A	643	ASN	3.4
1	A	642	LEU	3.2
1	A	641	PRO	3.1
1	B	643	ASN	2.9
1	A	602	ARG	2.8
1	B	649	PRO	2.7
1	B	648	HIS	2.5
1	B	734	GLN	2.5
1	A	732	ALA	2.4
1	A	644	VAL	2.4
1	A	603	VAL	2.4
1	B	601	PRO	2.4
1	A	733	ALA	2.4
1	B	644[A]	VAL	2.4
1	B	630	ASP	2.2
1	B	639	ASP	2.2
1	A	638	LEU	2.1

6.2 Non-standard residues in protein, DNA, RNA chains [i](#)

There are no non-standard protein/DNA/RNA residues in this entry.

6.3 Carbohydrates [i](#)

There are no carbohydrates in this entry.

6.4 Ligands [i](#)

In the following table, the Atoms column lists the number of modelled atoms in the group and the number defined in the chemical component dictionary. The B-factors column lists the minimum, median, 95th percentile and maximum values of B factors of atoms in the group. The column labelled 'Q< 0.9' lists the number of atoms with occupancy less than 0.9.

Mol	Type	Chain	Res	Atoms	RSCC	RSR	B-factors(\AA^2)	Q<0.9
3	EDO	A	1002	4/4	0.80	0.18	31,32,33,36	0
2	OLI	A	1004	39/39	0.83	0.16	18,24,35,36	0
3	EDO	B	1001	4/4	0.91	0.11	25,29,30,33	0
3	EDO	A	1001	4/4	0.92	0.10	25,27,28,29	0
2	OLI	B	1000	39/39	0.93	0.09	11,13,15,15	0
2	OLI	A	1000	39/39	0.94	0.09	14,16,18,18	0

6.5 Other polymers [i](#)

There are no such residues in this entry.