



# Full wwPDB X-ray Structure Validation Report ⓘ

May 11, 2021 – 10:29 am BST

PDB ID : 6ZO5  
Title : Fusidic acid binding to the TM1/TM2 groove of AcrB-G619P\_G621P  
Authors : Tam, H.K.; Foong, W.E.; Pos, K.M.  
Deposited on : 2020-07-07  
Resolution : 2.50 Å(reported)

This is a Full wwPDB X-ray Structure Validation Report for a publicly released PDB entry.

We welcome your comments at [validation@mail.wwpdb.org](mailto:validation@mail.wwpdb.org)

A user guide is available at

<https://www.wwpdb.org/validation/2017/XrayValidationReportHelp>

with specific help available everywhere you see the ⓘ symbol.

---

The following versions of software and data (see [references ⓘ](#)) were used in the production of this report:

MolProbity : 4.02b-467  
Mogul : 1.8.5 (274361), CSD as541be (2020)  
Xtriage (Phenix) : 1.13  
EDS : 2.18  
buster-report : 1.1.7 (2018)  
Percentile statistics : 20191225.v01 (using entries in the PDB archive December 25th 2019)  
Refmac : 5.8.0158  
CCP4 : 7.0.044 (Gargrove)  
Ideal geometry (proteins) : Engh & Huber (2001)  
Ideal geometry (DNA, RNA) : Parkinson et al. (1996)  
Validation Pipeline (wwPDB-VP) : 2.18

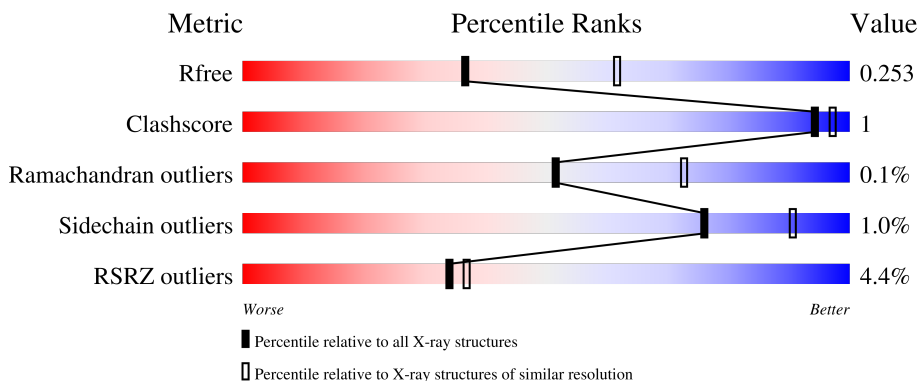
# 1 Overall quality at a glance

The following experimental techniques were used to determine the structure:

*X-RAY DIFFRACTION*

The reported resolution of this entry is 2.50 Å.

Percentile scores (ranging between 0-100) for global validation metrics of the entry are shown in the following graphic. The table shows the number of entries on which the scores are based.



Metric	Whole archive (#Entries)	Similar resolution (#Entries, resolution range(Å))
$R_{free}$	130704	4661 (2.50-2.50)
Clashscore	141614	5346 (2.50-2.50)
Ramachandran outliers	138981	5231 (2.50-2.50)
Sidechain outliers	138945	5233 (2.50-2.50)
RSRZ outliers	127900	4559 (2.50-2.50)

The table below summarises the geometric issues observed across the polymeric chains and their fit to the electron density. The red, orange, yellow and green segments of the lower bar indicate the fraction of residues that contain outliers for  $\geq 3$ , 2, 1 and 0 types of geometric quality criteria respectively. A grey segment represents the fraction of residues that are not modelled. The numeric value for each fraction is indicated below the corresponding segment, with a dot representing fractions  $\leq 5\%$ . The upper red bar (where present) indicates the fraction of residues that have poor fit to the electron density. The numeric value is given above the bar.

Mol	Chain	Length	Quality of chain
1	A	1057	
1	B	1057	
1	C	1057	
2	D	169	
2	E	169	

## 2 Entry composition [i](#)

There are 18 unique types of molecules in this entry. The entry contains 27620 atoms, of which 0 are hydrogens and 0 are deuteriums.

In the tables below, the ZeroOcc column contains the number of atoms modelled with zero occupancy, the AltConf column contains the number of residues with at least one atom in alternate conformation and the Trace column contains the number of residues modelled with at most 2 atoms.

- Molecule 1 is a protein called Multidrug efflux pump subunit AcrB.

Mol	Chain	Residues	Atoms					ZeroOcc	AltConf	Trace
			Total	C	N	O	S			
1	A	1034	7867	5065	1296	1462	44	0	1	0
1	B	1034	7874	5070	1299	1460	45	0	2	0
1	C	1034	7891	5082	1299	1465	45	0	6	0

There are 30 discrepancies between the modelled and reference sequences:

Chain	Residue	Modelled	Actual	Comment	Reference
A	619	PRO	GLY	engineered mutation	UNP P31224
A	621	PRO	GLY	engineered mutation	UNP P31224
A	1050	LEU	-	expression tag	UNP P31224
A	1051	GLU	-	expression tag	UNP P31224
A	1052	HIS	-	expression tag	UNP P31224
A	1053	HIS	-	expression tag	UNP P31224
A	1054	HIS	-	expression tag	UNP P31224
A	1055	HIS	-	expression tag	UNP P31224
A	1056	HIS	-	expression tag	UNP P31224
A	1057	HIS	-	expression tag	UNP P31224
B	619	PRO	GLY	engineered mutation	UNP P31224
B	621	PRO	GLY	engineered mutation	UNP P31224
B	1050	LEU	-	expression tag	UNP P31224
B	1051	GLU	-	expression tag	UNP P31224
B	1052	HIS	-	expression tag	UNP P31224
B	1053	HIS	-	expression tag	UNP P31224
B	1054	HIS	-	expression tag	UNP P31224
B	1055	HIS	-	expression tag	UNP P31224
B	1056	HIS	-	expression tag	UNP P31224
B	1057	HIS	-	expression tag	UNP P31224
C	619	PRO	GLY	engineered mutation	UNP P31224
C	621	PRO	GLY	engineered mutation	UNP P31224
C	1050	LEU	-	expression tag	UNP P31224

*Continued on next page...*

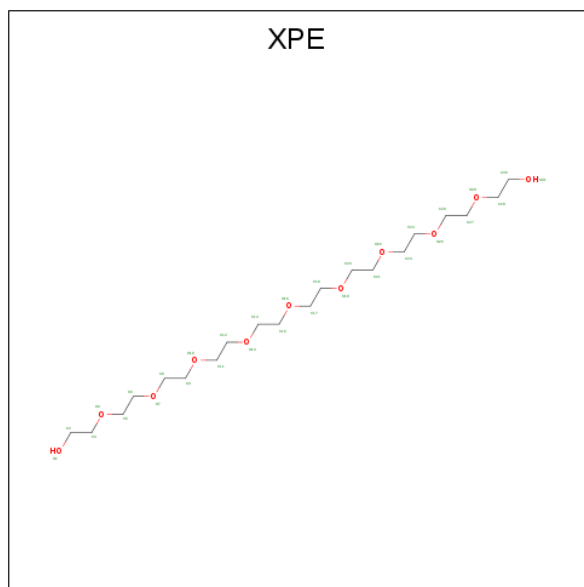
Continued from previous page...

Chain	Residue	Modelled	Actual	Comment	Reference
C	1051	GLU	-	expression tag	UNP P31224
C	1052	HIS	-	expression tag	UNP P31224
C	1053	HIS	-	expression tag	UNP P31224
C	1054	HIS	-	expression tag	UNP P31224
C	1055	HIS	-	expression tag	UNP P31224
C	1056	HIS	-	expression tag	UNP P31224
C	1057	HIS	-	expression tag	UNP P31224

- Molecule 2 is a protein called DARPIN.

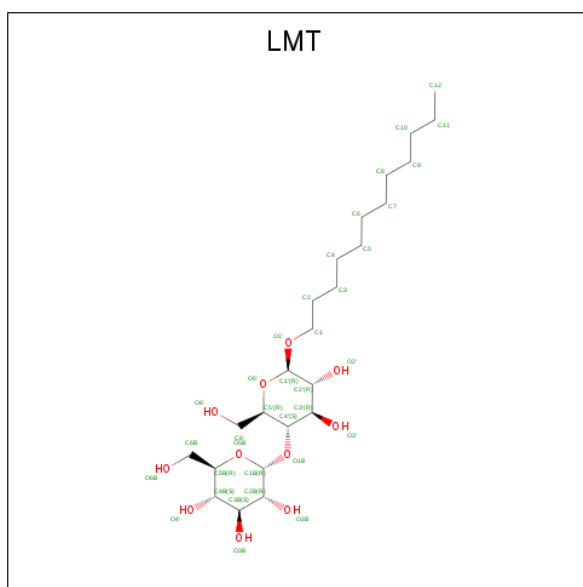
Mol	Chain	Residues	Atoms					ZeroOcc	AltConf	Trace
			Total	C	N	O	S			
2	D	155	Total	C	N	O	S	0	0	0
			1173	739	205	228	1			
2	E	153	Total	C	N	O	S	0	0	0
			1159	732	203	223	1			

- Molecule 3 is 3,6,9,12,15,18,21,24,27-NONAOXANONACOSANE-1,29-DIOL (three-letter code: XPE) (formula:  $C_{20}H_{42}O_{11}$ ).



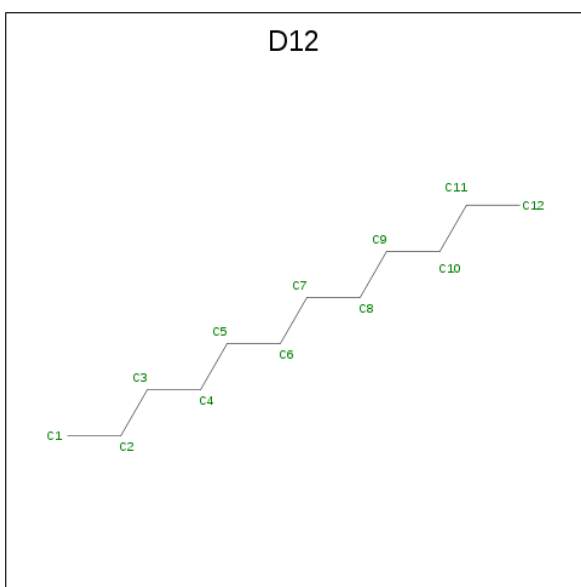
Mol	Chain	Residues	Atoms			ZeroOcc	AltConf
			Total	C	O		
3	A	1	Total	C	O	0	0
			31	20	11		

- Molecule 4 is DODECYL-BETA-D-MALTOSE (three-letter code: LMT) (formula:  $C_{24}H_{46}O_{11}$ ).



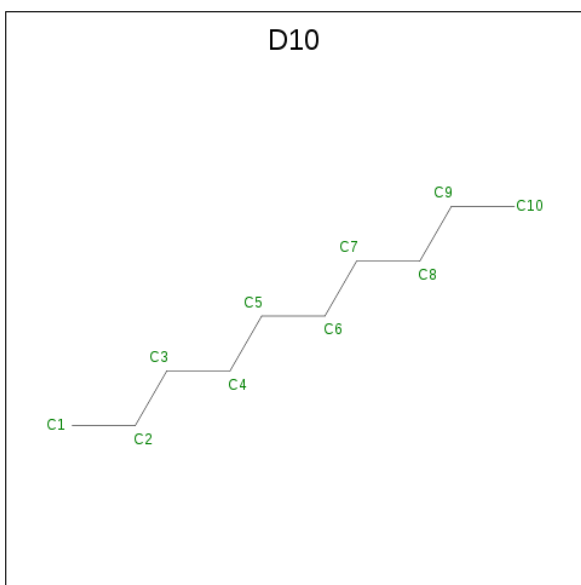
Mol	Chain	Residues	Atoms	ZeroOcc	AltConf
4	A	1	Total C O 35 24 11	0	0
4	A	1	Total C O 35 24 11	0	0
4	A	1	Total C O 35 24 11	0	0
4	A	1	Total C O 35 24 11	0	0
4	B	1	Total C O 35 24 11	0	0
4	B	1	Total C O 35 24 11	0	0
4	B	1	Total C O 35 24 11	0	0
4	C	1	Total C O 35 24 11	0	0

- Molecule 5 is DODECANE (three-letter code: D12) (formula: C<sub>12</sub>H<sub>26</sub>).



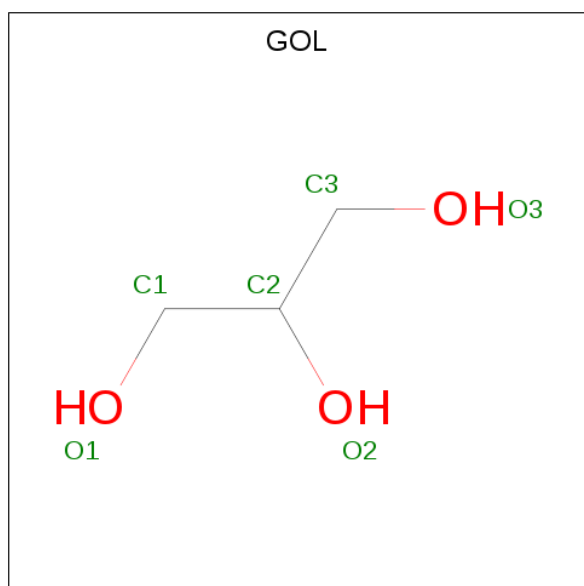
Mol	Chain	Residues	Atoms	ZeroOcc	AltConf
5	A	1	Total C 12 12	0	0
5	A	1	Total C 12 12	0	0
5	B	1	Total C 12 12	0	0
5	C	1	Total C 12 12	0	0

- Molecule 6 is DECANE (three-letter code: D10) (formula:  $C_{10}H_{22}$ ).



Mol	Chain	Residues	Atoms	ZeroOcc	AltConf
6	A	1	Total C 10 10	0	0
6	A	1	Total C 10 10	0	0
6	B	1	Total C 10 10	0	0
6	B	1	Total C 10 10	0	0
6	C	1	Total C 10 10	0	0

- Molecule 7 is GLYCEROL (three-letter code: GOL) (formula: C<sub>3</sub>H<sub>8</sub>O<sub>3</sub>).



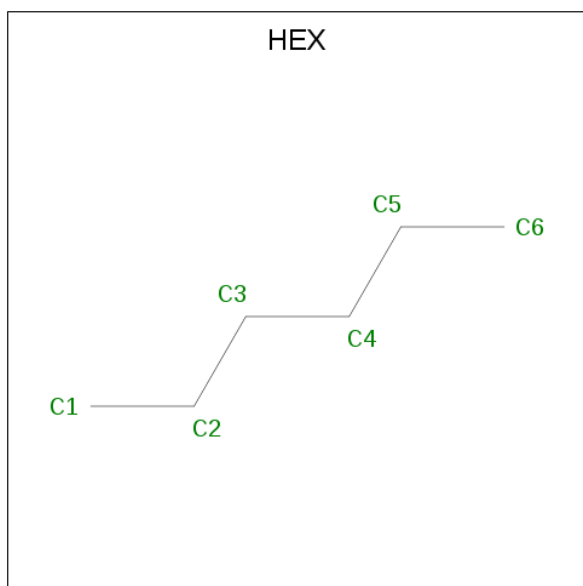
Mol	Chain	Residues	Atoms	ZeroOcc	AltConf
7	A	1	Total C O 6 3 3	0	0
7	A	1	Total C O 6 3 3	0	0
7	A	1	Total C O 6 3 3	0	0
7	B	1	Total C O 6 3 3	0	0
7	C	1	Total C O 6 3 3	0	0
7	C	1	Total C O 6 3 3	0	0
7	C	1	Total C O 6 3 3	0	0

*Continued on next page...*

Continued from previous page...

Mol	Chain	Residues	Atoms			ZeroOcc	AltConf
7	C	1	Total	C	O	0	0
			6	3	3		

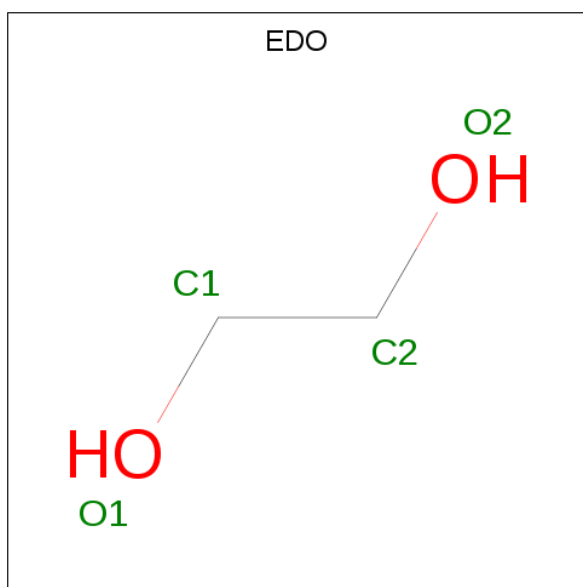
- Molecule 8 is HEXANE (three-letter code: HEX) (formula: C<sub>6</sub>H<sub>14</sub>).



Mol	Chain	Residues	Atoms		ZeroOcc	AltConf
8	A	1	Total	C	0	0
			6	6		
8	A	1	Total	C	0	0
			6	6		
8	B	1	Total	C	0	0
			6	6		
8	B	1	Total	C	0	0
			6	6		
8	B	1	Total	C	0	0
			6	6		
8	C	1	Total	C	0	0
			6	6		
8	C	1	Total	C	0	0
			6	6		

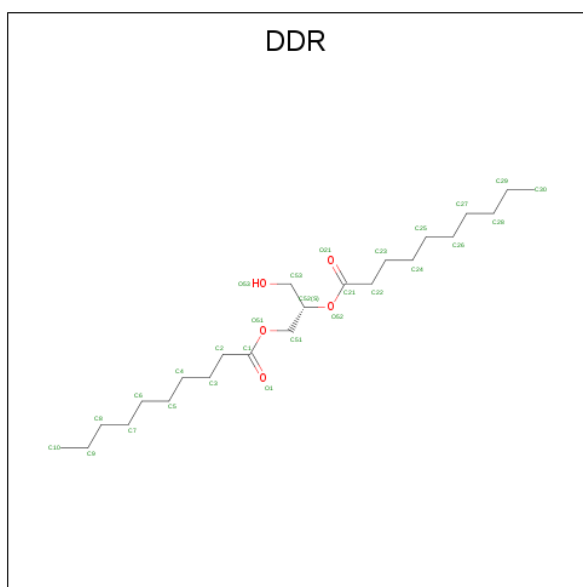
- Molecule 9 is 1,2-ETHANEDIOL (three-letter code: EDO) (formula: C<sub>2</sub>H<sub>6</sub>O<sub>2</sub>).





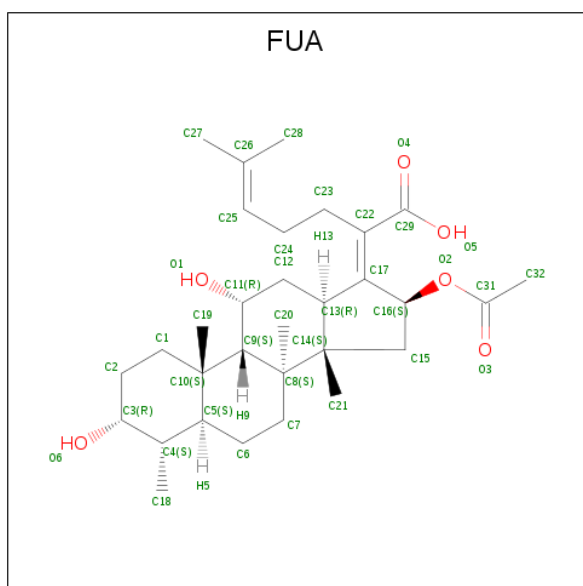
Mol	Chain	Residues	Atoms	ZeroOcc	AltConf
9	A	1	Total C O 4 2 2	0	0
9	B	1	Total C O 4 2 2	0	0
9	B	1	Total C O 4 2 2	0	0
9	B	1	Total C O 4 2 2	0	0
9	C	1	Total C O 4 2 2	0	0
9	C	1	Total C O 4 2 2	0	0
9	D	1	Total C O 4 2 2	0	0

- Molecule 10 is (2S)-3-hydroxypropane-1,2-diyl didecanoate (three-letter code: DDR) (formula: C<sub>23</sub>H<sub>44</sub>O<sub>5</sub>).



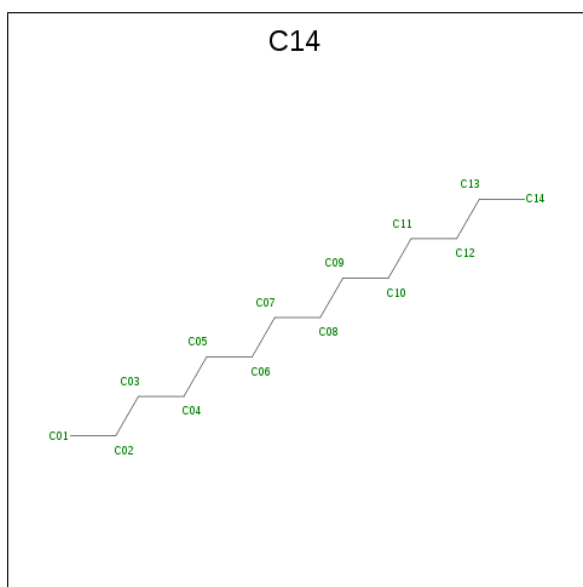
Mol	Chain	Residues	Atoms		ZeroOcc	AltConf
10	B	1	Total	C O	0	0
			28	23 5		

- Molecule 11 is FUSIDIC ACID (three-letter code: FUA) (formula:  $C_{31}H_{48}O_6$ ) (labeled as "Ligand of Interest" by depositor).



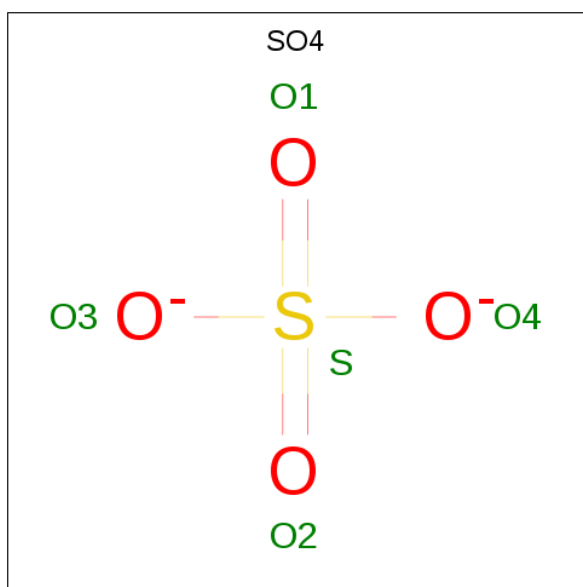
Mol	Chain	Residues	Atoms		ZeroOcc	AltConf
11	B	1	Total	C O	0	0
			37	31 6		

- Molecule 12 is TETRADECANE (three-letter code: C14) (formula:  $C_{14}H_{30}$ ).



Mol	Chain	Residues	Atoms	ZeroOcc	AltConf
12	B	1	Total C 14 14	0	0
12	C	1	Total C 14 14	0	0
12	C	1	Total C 14 14	0	0

- Molecule 13 is SULFATE ION (three-letter code: SO4) (formula: O<sub>4</sub>S).



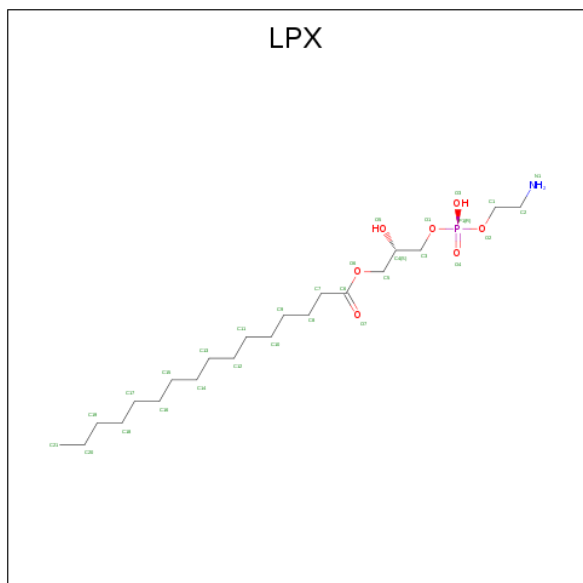
Mol	Chain	Residues	Atoms	ZeroOcc	AltConf
13	B	1	Total O S 5 4 1	0	0

*Continued on next page...*

Continued from previous page...

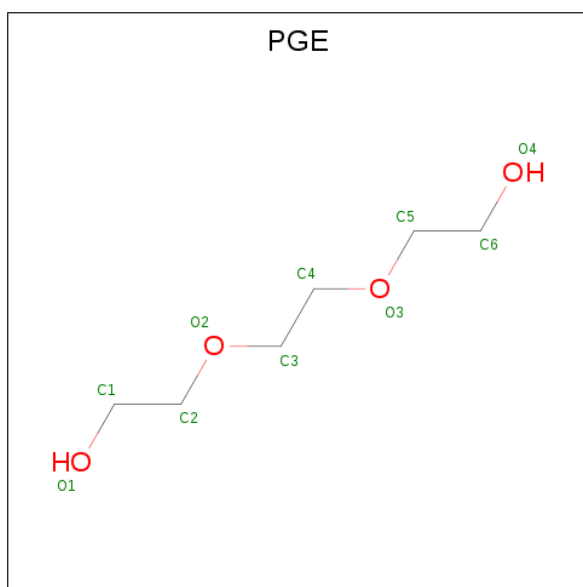
Mol	Chain	Residues	Atoms			ZeroOcc	AltConf
13	B	1	Total	O	S	0	0
			5	4	1		
13	C	1	Total	O	S	0	0
			5	4	1		

- Molecule 14 is (2S)-3-[(R)-(2-aminoethoxy)(hydroxy)phosphoryl]oxy}-2-hydroxypropyl hexadecanoate (three-letter code: LPX) (formula: C<sub>21</sub>H<sub>44</sub>NO<sub>7</sub>P).



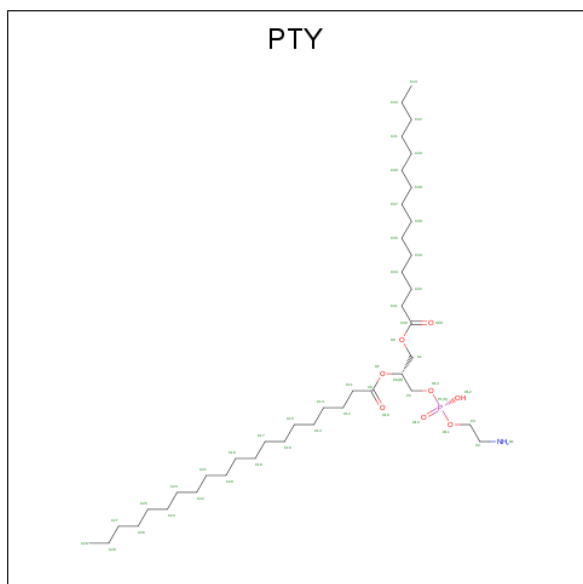
Mol	Chain	Residues	Atoms					ZeroOcc	AltConf
14	C	1	Total	C	N	O	P	0	0
			30	21	1	7	1		
14	C	1	Total	C	N	O	P	0	0
			30	21	1	7	1		

- Molecule 15 is TRIETHYLENE GLYCOL (three-letter code: PGE) (formula: C<sub>6</sub>H<sub>14</sub>O<sub>4</sub>).



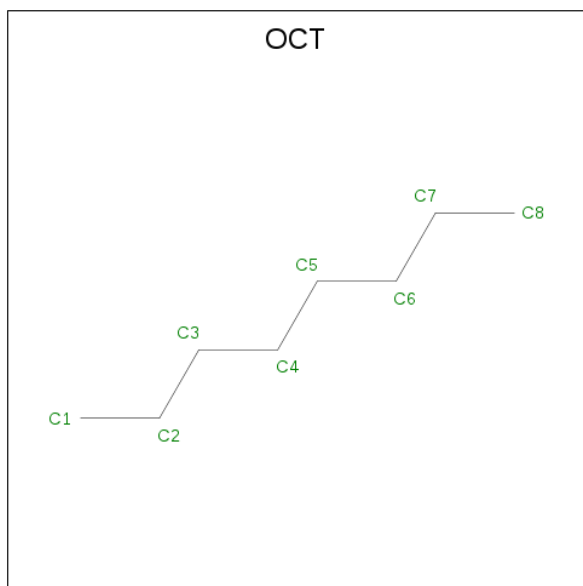
Mol	Chain	Residues	Atoms			ZeroOcc	AltConf
15	C	1	Total	C	O	0	0
			10	6	4		
15	C	1	Total	C	O	0	0
			10	6	4		

- Molecule 16 is PHOSPHATIDYLETHANOLAMINE (three-letter code: PTY) (formula:  $C_{40}H_{80}NO_8P$ ).



Mol	Chain	Residues	Atoms					ZeroOcc	AltConf
16	C	1	Total	C	N	O	P	0	0
			50	40	1	8	1		

- Molecule 17 is N-OCTANE (three-letter code: OCT) (formula: C<sub>8</sub>H<sub>18</sub>).



Mol	Chain	Residues	Atoms	ZeroOcc	AltConf
17	C	1	Total C 8 8	0	0

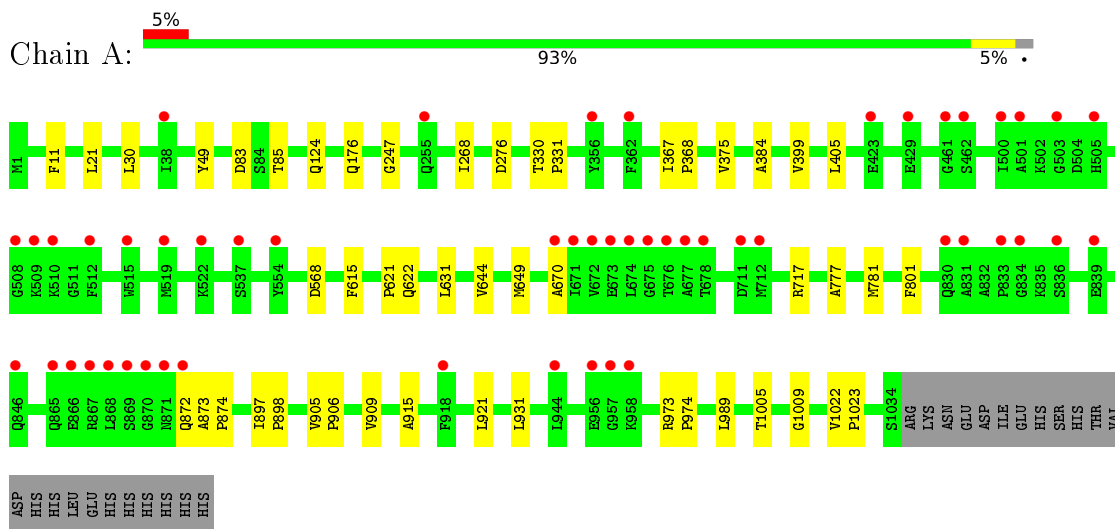
- Molecule 18 is water.

Mol	Chain	Residues	Atoms	ZeroOcc	AltConf
18	A	265	Total O 271 271	0	6
18	B	224	Total O 230 230	0	6
18	C	317	Total O 328 328	0	11
18	D	22	Total O 22 22	0	0
18	E	16	Total O 18 18	0	2

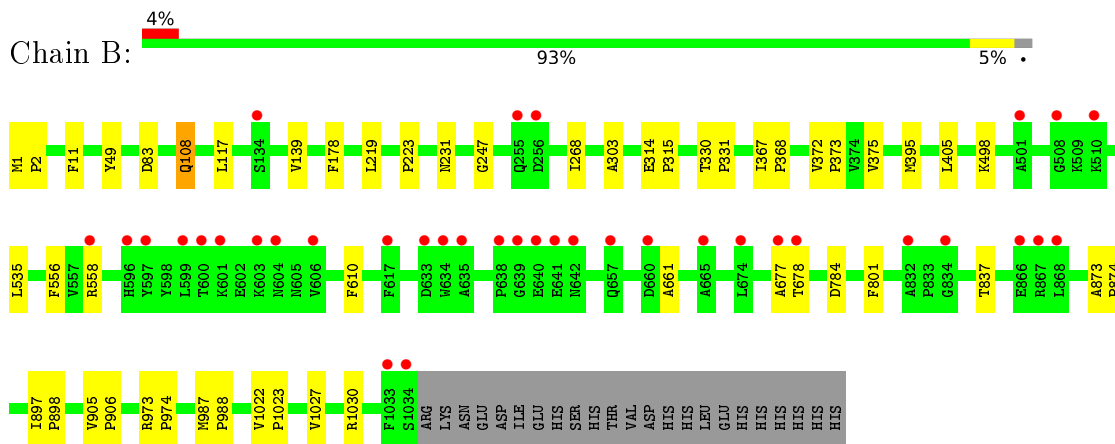
### 3 Residue-property plots i

These plots are drawn for all protein, RNA, DNA and oligosaccharide chains in the entry. The first graphic for a chain summarises the proportions of the various outlier classes displayed in the second graphic. The second graphic shows the sequence view annotated by issues in geometry and electron density. Residues are color-coded according to the number of geometric quality criteria for which they contain at least one outlier: green = 0, yellow = 1, orange = 2 and red = 3 or more. A red dot above a residue indicates a poor fit to the electron density ( $RSRZ > 2$ ). Stretches of 2 or more consecutive residues without any outlier are shown as a green connector. Residues present in the sample, but not in the model, are shown in grey.

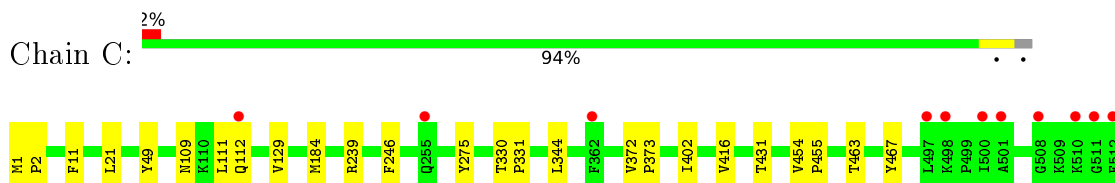
- Molecule 1: Multidrug efflux pump subunit AcrB

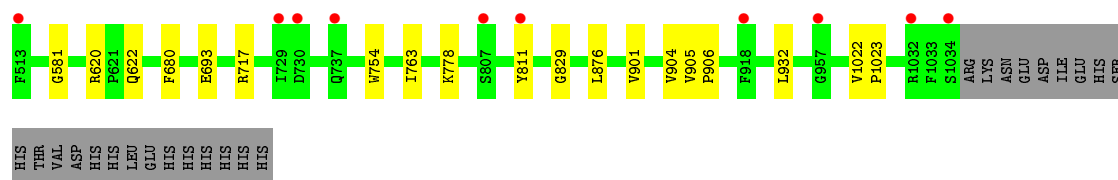


- Molecule 1: Multidrug efflux pump subunit AcrB

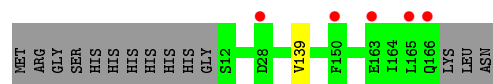
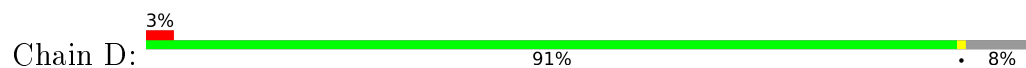


- Molecule 1: Multidrug efflux pump subunit AcrB

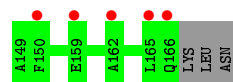
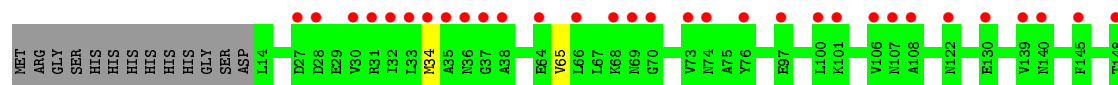
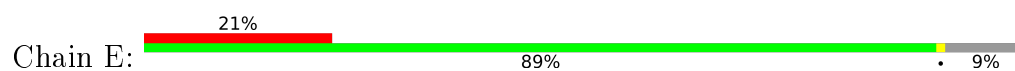




- Molecule 2: DARPIN



- Molecule 2: DARPIN





## 4 Data and refinement statistics

Property	Value	Source
Space group	P 21 21 21	Depositor
Cell constants a, b, c, $\alpha$ , $\beta$ , $\gamma$	146.23Å 159.70Å 245.49Å 90.00° 90.00° 90.00°	Depositor
Resolution (Å)	49.38 – 2.50 49.37 – 2.50	Depositor EDS
% Data completeness (in resolution range)	100.0 (49.38-2.50) 100.0 (49.37-2.50)	Depositor EDS
$R_{merge}$	0.17	Depositor
$R_{sym}$	(Not available)	Depositor
$\langle I/\sigma(I) \rangle$ <sup>1</sup>	1.50 (at 2.51Å)	Xtrriage
Refinement program	REFMAC 5.8.0258	Depositor
R, $R_{free}$	0.226 , 0.252 0.229 , 0.253	Depositor DCC
$R_{free}$ test set	9935 reflections (5.01%)	wwPDB-VP
Wilson B-factor (Å <sup>2</sup> )	44.0	Xtrriage
Anisotropy	0.470	Xtrriage
Bulk solvent $k_{sol}$ (e/Å <sup>3</sup> ), $B_{sol}$ (Å <sup>2</sup> )	0.34 , 55.1	EDS
L-test for twinning <sup>2</sup>	$\langle  L  \rangle = 0.49$ , $\langle L^2 \rangle = 0.32$	Xtrriage
Estimated twinning fraction	No twinning to report.	Xtrriage
$F_o, F_c$ correlation	0.92	EDS
Total number of atoms	27620	wwPDB-VP
Average B, all atoms (Å <sup>2</sup> )	49.0	wwPDB-VP

Xtrriage's analysis on translational NCS is as follows: *The largest off-origin peak in the Patterson function is 2.07% of the height of the origin peak. No significant pseudotranslation is detected.*

<sup>1</sup>Intensities estimated from amplitudes.

<sup>2</sup>Theoretical values of  $\langle |L| \rangle$ ,  $\langle L^2 \rangle$  for acentric reflections are 0.5, 0.333 respectively for untwinned datasets, and 0.375, 0.2 for perfectly twinned datasets.

## 5 Model quality [i](#)

### 5.1 Standard geometry [i](#)

Bond lengths and bond angles in the following residue types are not validated in this section: OCT, PGE, HEX, GOL, LMT, DDR, C14, SO4, FUA, EDO, LPX, D10, XPE, PTY, D12

The Z score for a bond length (or angle) is the number of standard deviations the observed value is removed from the expected value. A bond length (or angle) with  $|Z| > 5$  is considered an outlier worth inspection. RMSZ is the root-mean-square of all Z scores of the bond lengths (or angles).

Mol	Chain	Bond lengths		Bond angles	
		RMSZ	# Z  >5	RMSZ	# Z  >5
1	A	0.67	0/8022	0.71	0/10897
1	B	0.67	0/8032	0.70	0/10909
1	C	0.66	0/8058	0.70	0/10946
2	D	0.68	0/1192	0.70	0/1621
2	E	0.68	0/1178	0.71	0/1602
All	All	0.67	0/26482	0.70	0/35975

There are no bond length outliers.

There are no bond angle outliers.

There are no chirality outliers.

There are no planarity outliers.

### 5.2 Too-close contacts [i](#)

In the following table, the Non-H and H(model) columns list the number of non-hydrogen atoms and hydrogen atoms in the chain respectively. The H(added) column lists the number of hydrogen atoms added and optimized by MolProbity. The Clashes column lists the number of clashes within the asymmetric unit, whereas Symm-Clashes lists symmetry-related clashes.

Mol	Chain	Non-H	H(model)	H(added)	Clashes	Symm-Clashes
1	A	7867	0	8020	22	0
1	B	7874	0	8036	29	0
1	C	7891	0	8057	22	0
2	D	1173	0	1156	0	0
2	E	1159	0	1147	1	0
3	A	31	0	42	0	0
4	A	140	0	184	0	0
4	B	105	0	138	0	0

*Continued on next page...*

*Continued from previous page...*

Mol	Chain	Non-H	H(model)	H(added)	Clashes	Symm-Clashes
4	C	35	0	46	0	0
5	A	24	0	52	0	0
5	B	12	0	26	0	0
5	C	12	0	26	0	0
6	A	20	0	44	0	0
6	B	20	0	44	0	0
6	C	10	0	22	0	0
7	A	18	0	24	0	0
7	B	6	0	8	0	0
7	C	24	0	32	0	0
8	A	12	0	28	0	0
8	B	18	0	42	0	0
8	C	12	0	28	0	0
9	A	4	0	6	0	0
9	B	12	0	18	0	0
9	C	8	0	12	0	0
9	D	4	0	6	0	0
10	B	28	0	44	0	0
11	B	37	0	47	4	0
12	B	14	0	30	0	0
12	C	28	0	60	0	0
13	B	10	0	0	0	0
13	C	5	0	0	0	0
14	C	60	0	86	0	0
15	C	20	0	28	0	0
16	C	50	0	79	0	0
17	C	8	0	18	0	0
18	A	271	0	0	0	0
18	B	230	0	0	0	0
18	C	328	0	0	0	0
18	D	22	0	0	0	0
18	E	18	0	0	0	0
All	All	27620	0	27636	71	0

The all-atom clashscore is defined as the number of clashes found per 1000 atoms (including hydrogen atoms). The all-atom clashscore for this structure is 1.

All (71) close contacts within the same asymmetric unit are listed below, sorted by their clash magnitude.

Atom-1	Atom-2	Interatomic distance (Å)	Clash overlap (Å)
11:B:1102:FUA:H5	11:B:1102:FUA:H202	1.60	0.83

*Continued on next page...*

*Continued from previous page...*

Atom-1	Atom-2	Interatomic distance (Å)	Clash overlap (Å)
1:C:111:LEU:HD22	1:C:129:VAL:CG2	2.28	0.64
1:A:85:THR:HG21	1:A:621:PRO:HD2	1.81	0.63
1:B:395[A]:MET:HA	1:B:395[A]:MET:CE	2.29	0.63
1:A:873:ALA:HB3	1:A:874:PRO:HD3	1.84	0.59
1:C:901:VAL:O	1:C:904:VAL:HG12	2.03	0.58
1:A:367:ILE:HB	1:A:368:PRO:HD3	1.87	0.56
1:A:399:VAL:HG11	1:A:989:LEU:HD11	1.88	0.56
2:E:34:MET:HE1	2:E:65:VAL:HG12	1.88	0.55
11:B:1102:FUA:C12	11:B:1102:FUA:H232	2.36	0.55
1:B:873:ALA:HB3	1:B:874:PRO:HD3	1.92	0.52
1:B:678:THR:HA	1:B:837:THR:HB	1.89	0.52
1:A:1022:VAL:N	1:A:1023:PRO:HD2	2.25	0.51
1:B:108:GLN:HG3	1:C:112[B]:GLN:HG2	1.92	0.51
1:B:223:PRO:HD3	1:C:275:TYR:CD1	2.47	0.50
1:B:395[A]:MET:HA	1:B:395[A]:MET:HE1	1.93	0.49
1:A:247:GLY:HA2	1:A:268:ILE:CD1	2.43	0.49
1:B:1022:VAL:N	1:B:1023:PRO:HD2	2.27	0.49
1:B:108:GLN:NE2	1:C:109:ASN:OD1	2.46	0.48
11:B:1102:FUA:H202	11:B:1102:FUA:C5	2.37	0.48
1:A:897:ILE:N	1:A:898:PRO:CD	2.77	0.48
1:B:375:VAL:HG11	1:B:405:LEU:HD22	1.96	0.48
1:A:176:GLN:HG2	1:A:615:PHE:CE2	2.49	0.47
1:C:1:MET:HB3	1:C:2:PRO:HD3	1.96	0.47
1:C:239:ARG:HB2	1:C:763:ILE:HG12	1.97	0.47
1:B:314:GLU:HB2	1:B:315:PRO:HD3	1.96	0.46
1:A:905:VAL:HB	1:A:906:PRO:HD3	1.98	0.46
1:C:876:LEU:HD21	1:C:932:LEU:HD11	1.98	0.46
1:C:416:VAL:HG22	1:C:431:THR:HA	1.98	0.46
1:C:454:VAL:HB	1:C:455:PRO:HD3	1.98	0.45
1:B:231:ASN:O	1:C:581:GLY:HA2	2.17	0.45
1:B:303:ALA:HB2	1:B:330:THR:HG21	1.98	0.45
1:B:987:MET:N	1:B:988:PRO:CD	2.80	0.45
1:B:535:LEU:HD22	1:B:1027:VAL:HG21	1.99	0.45
1:A:909:VAL:HA	1:A:931:LEU:HD11	1.99	0.45
1:B:372:VAL:HB	1:B:373:PRO:HD3	1.98	0.45
1:B:897:ILE:N	1:B:898:PRO:HD2	2.33	0.44
1:B:139:VAL:HG13	1:B:178:PHE:HE2	1.81	0.44
1:A:330:THR:OG1	1:A:331:PRO:HD3	2.18	0.44
1:C:905:VAL:HB	1:C:906:PRO:HD3	1.98	0.44
1:C:111:LEU:HD22	1:C:129:VAL:HG21	1.98	0.44
1:B:973:ARG:N	1:B:974:PRO:HD2	2.33	0.43

*Continued on next page...*

Continued from previous page...

Atom-1	Atom-2	Interatomic distance (Å)	Clash overlap (Å)
1:B:219:LEU:HD23	1:C:754:TRP:CZ3	2.52	0.43
11:B:1102:FUA:H232	11:B:1102:FUA:H122	2.00	0.43
1:A:568:ASP:CG	1:A:644:VAL:HG23	2.39	0.43
1:B:367:ILE:HB	1:B:368:PRO:HD3	2.00	0.43
1:A:375:VAL:HG11	1:A:405:LEU:HD22	2.01	0.42
1:A:921:LEU:HD12	1:A:1005:THR:HG21	2.01	0.42
1:B:897:ILE:N	1:B:898:PRO:CD	2.81	0.42
1:A:973:ARG:N	1:A:974:PRO:HD2	2.34	0.42
1:A:777:ALA:O	1:A:781:MET:HG2	2.19	0.42
1:B:1:MET:HB3	1:B:2:PRO:HD3	1.99	0.42
1:C:184:MET:HG2	1:C:246:PHE:CD2	2.55	0.42
1:C:330:THR:HB	1:C:331:PRO:HD3	2.01	0.42
1:B:905:VAL:HB	1:B:906:PRO:HD3	2.02	0.42
1:C:344:LEU:HD11	1:C:402:ILE:HD11	2.01	0.42
1:C:463:THR:HG22	1:C:467:TYR:CZ	2.55	0.42
1:A:30:LEU:HD21	1:A:384:ALA:HA	2.02	0.42
1:A:631:LEU:HD11	1:A:644:VAL:HG22	2.02	0.41
1:C:1022:VAL:N	1:C:1023:PRO:CD	2.82	0.41
1:B:677:ALA:O	1:B:678:THR:OG1	2.33	0.41
1:B:330:THR:OG1	1:B:331:PRO:HD3	2.20	0.41
1:B:247:GLY:HA2	1:B:268:ILE:CD1	2.51	0.41
1:B:330:THR:N	1:B:331:PRO:CD	2.84	0.41
1:A:915:ALA:HB2	1:A:1009:GLY:HA3	2.03	0.41
1:B:108:GLN:HG3	1:C:112[A]:GLN:HG3	2.02	0.41
1:A:905:VAL:O	1:A:909:VAL:HG23	2.21	0.40
1:C:680:PHE:CZ	1:C:829:GLY:HA3	2.57	0.40
1:A:124:GLN:O	1:B:117:LEU:HD21	2.22	0.40
1:C:372:VAL:HB	1:C:373:PRO:CD	2.52	0.40
1:A:276:ASP:HB3	1:A:621:PRO:HG3	2.04	0.40

There are no symmetry-related clashes.

## 5.3 Torsion angles [i](#)

### 5.3.1 Protein backbone [i](#)

In the following table, the Percentiles column shows the percent Ramachandran outliers of the chain as a percentile score with respect to all X-ray entries followed by that with respect to entries of similar resolution.

The Analysed column shows the number of residues for which the backbone conformation was analysed, and the total number of residues.

Mol	Chain	Analysed	Favoured	Allowed	Outliers	Percentiles	
1	A	1033/1057 (98%)	1007 (98%)	24 (2%)	2 (0%)	47	68
1	B	1034/1057 (98%)	1013 (98%)	20 (2%)	1 (0%)	51	73
1	C	1038/1057 (98%)	1016 (98%)	21 (2%)	1 (0%)	51	73
2	D	153/169 (90%)	151 (99%)	2 (1%)	0	100	100
2	E	151/169 (89%)	149 (99%)	2 (1%)	0	100	100
All	All	3409/3509 (97%)	3336 (98%)	69 (2%)	4 (0%)	51	73

All (4) Ramachandran outliers are listed below:

Mol	Chain	Res	Type
1	A	670	ALA
1	C	622	GLN
1	A	622	GLN
1	B	661	ALA

### 5.3.2 Protein sidechains [i](#)

In the following table, the Percentiles column shows the percent sidechain outliers of the chain as a percentile score with respect to all X-ray entries followed by that with respect to entries of similar resolution.

The Analysed column shows the number of residues for which the sidechain conformation was analysed, and the total number of residues.

Mol	Chain	Analysed	Rotameric	Outliers	Percentiles	
1	A	843/865 (98%)	835 (99%)	8 (1%)	78	92
1	B	844/865 (98%)	833 (99%)	11 (1%)	69	87
1	C	848/865 (98%)	840 (99%)	8 (1%)	78	92
2	D	120/132 (91%)	119 (99%)	1 (1%)	81	93
2	E	118/132 (89%)	118 (100%)	0	100	100
All	All	2773/2859 (97%)	2745 (99%)	28 (1%)	76	90

All (28) residues with a non-rotameric sidechain are listed below:

Mol	Chain	Res	Type
1	A	11	PHE
1	A	21	LEU
1	A	49	TYR
1	A	83	ASP

*Continued on next page...*

*Continued from previous page...*

Mol	Chain	Res	Type
1	A	649	MET
1	A	717	ARG
1	A	801	PHE
1	A	872	GLN
1	B	11	PHE
1	B	49	TYR
1	B	83	ASP
1	B	108	GLN
1	B	498	LYS
1	B	556	PHE
1	B	558	ARG
1	B	610	PHE
1	B	784	ASP
1	B	801	PHE
1	B	1030	ARG
1	C	11	PHE
1	C	21	LEU
1	C	49	TYR
1	C	620	ARG
1	C	693	GLU
1	C	717	ARG
1	C	778	LYS
1	C	811	TYR
2	D	139	VAL

Sometimes sidechains can be flipped to improve hydrogen bonding and reduce clashes. All (1) such sidechains are listed below:

Mol	Chain	Res	Type
2	E	69	ASN

### 5.3.3 RNA [i](#)

There are no RNA molecules in this entry.

## 5.4 Non-standard residues in protein, DNA, RNA chains [i](#)

There are no non-standard protein/DNA/RNA residues in this entry.

## 5.5 Carbohydrates [i](#)

There are no monosaccharides in this entry.

## 5.6 Ligand geometry [i](#)

54 ligands are modelled in this entry.

In the following table, the Counts columns list the number of bonds (or angles) for which Mogul statistics could be retrieved, the number of bonds (or angles) that are observed in the model and the number of bonds (or angles) that are defined in the Chemical Component Dictionary. The Link column lists molecule types, if any, to which the group is linked. The Z score for a bond length (or angle) is the number of standard deviations the observed value is removed from the expected value. A bond length (or angle) with  $|Z| > 2$  is considered an outlier worth inspection. RMSZ is the root-mean-square of all Z scores of the bond lengths (or angles).

Mol	Type	Chain	Res	Link	Bond lengths			Bond angles		
					Counts	RMSZ	$\# Z  > 2$	Counts	RMSZ	$\# Z  > 2$
3	XPE	A	1101	-	30,30,30	0.20	0	29,29,29	0.15	0
14	LPX	C	1101	-	29,29,29	0.29	0	31,33,33	0.35	0
11	FUA	B	1102	-	36,40,40	0.48	0	46,64,64	0.80	0
8	HEX	C	1116	-	5,5,5	0.13	0	4,4,4	0.07	0
5	D12	A	1106	-	11,11,11	0.23	0	10,10,10	0.54	0
17	OCT	C	1118	-	7,7,7	0.11	0	6,6,6	0.04	0
7	GOL	C	1114	-	5,5,5	0.11	0	5,5,5	0.31	0
9	EDO	A	1115	-	3,3,3	0.06	0	2,2,2	0.16	0
5	D12	B	1106	-	11,11,11	0.24	0	10,10,10	0.54	0
7	GOL	A	1110	-	5,5,5	0.10	0	5,5,5	0.27	0
8	HEX	B	1113	-	5,5,5	0.13	0	4,4,4	0.08	0
8	HEX	B	1114	-	5,5,5	0.13	0	4,4,4	0.09	0
6	D10	B	1109	-	9,9,9	0.10	0	8,8,8	0.09	0
9	EDO	D	201	-	3,3,3	0.05	0	2,2,2	0.17	0
8	HEX	A	1113	-	5,5,5	0.13	0	4,4,4	0.07	0
7	GOL	C	1115	-	5,5,5	0.11	0	5,5,5	0.32	0
13	SO4	B	1110	-	4,4,4	0.39	0	6,6,6	0.05	0
8	HEX	C	1117	-	5,5,5	0.13	0	4,4,4	0.05	0
12	C14	B	1107	-	13,13,13	0.09	0	12,12,12	0.08	0
8	HEX	B	1115	-	5,5,5	0.14	0	4,4,4	0.08	0
4	LMT	A	1105	-	36,36,36	0.44	0	47,47,47	0.55	0
6	D10	A	1108	-	9,9,9	0.10	0	8,8,8	0.08	0
7	GOL	A	1112	-	5,5,5	0.09	0	5,5,5	0.30	0
9	EDO	C	1120	-	3,3,3	0.07	0	2,2,2	0.23	0
4	LMT	A	1102	-	36,36,36	0.44	0	47,47,47	0.73	0
16	PTY	C	1105	-	49,49,49	0.25	0	52,54,54	0.36	0
4	LMT	B	1103	-	36,36,36	0.46	0	47,47,47	0.56	0



Mol	Type	Chain	Res	Link	Bond lengths			Bond angles		
					Counts	RMSZ	# Z  > 2	Counts	RMSZ	# Z  > 2
6	D10	B	1108	-	9,9,9	0.10	0	8,8,8	0.06	0
7	GOL	C	1112	-	5,5,5	0.08	0	5,5,5	0.24	0
8	HEX	A	1114	-	5,5,5	0.13	0	4,4,4	0.09	0
13	SO4	B	1111	-	4,4,4	0.40	0	6,6,6	0.05	0
9	EDO	B	1117	-	3,3,3	0.06	0	2,2,2	0.18	0
4	LMT	C	1106	-	36,36,36	0.46	0	47,47,47	0.55	0
12	C14	C	1109	-	13,13,13	0.08	0	12,12,12	0.05	0
4	LMT	B	1105	-	36,36,36	0.47	0	47,47,47	0.77	1 (2%)
5	D12	A	1107	-	11,11,11	0.26	0	10,10,10	0.47	0
7	GOL	B	1112	-	5,5,5	0.10	0	5,5,5	0.31	0
9	EDO	B	1118	-	3,3,3	0.06	0	2,2,2	0.20	0
14	LPX	C	1103	-	29,29,29	0.30	0	31,33,33	0.37	0
15	PGE	C	1102	-	9,9,9	0.18	0	8,8,8	0.09	0
4	LMT	A	1104	-	36,36,36	0.46	0	47,47,47	0.91	2 (4%)
7	GOL	C	1113	-	5,5,5	0.09	0	5,5,5	0.26	0
4	LMT	B	1104	-	36,36,36	0.43	0	47,47,47	0.63	0
4	LMT	A	1103	-	36,36,36	0.45	0	47,47,47	0.70	1 (2%)
12	C14	C	1108	-	13,13,13	0.09	0	12,12,12	0.08	0
9	EDO	B	1116	-	3,3,3	0.06	0	2,2,2	0.19	0
6	D10	A	1109	-	9,9,9	0.10	0	8,8,8	0.07	0
10	DDR	B	1101	-	27,27,27	1.25	2 (7%)	29,29,29	1.18	2 (6%)
5	D12	C	1107	-	11,11,11	0.24	0	10,10,10	0.54	0
9	EDO	C	1119	-	3,3,3	0.07	0	2,2,2	0.18	0
13	SO4	C	1111	-	4,4,4	0.39	0	6,6,6	0.04	0
6	D10	C	1110	-	9,9,9	0.11	0	8,8,8	0.06	0
15	PGE	C	1104	-	9,9,9	0.18	0	8,8,8	0.10	0
7	GOL	A	1111	-	5,5,5	0.10	0	5,5,5	0.26	0

In the following table, the Chirals column lists the number of chiral outliers, the number of chiral centers analysed, the number of these observed in the model and the number defined in the Chemical Component Dictionary. Similar counts are reported in the Torsion and Rings columns. '-' means no outliers of that kind were identified.

Mol	Type	Chain	Res	Link	Chirals	Torsions	Rings
3	XPE	A	1101	-	-	18/28/28/28	-
14	LPX	C	1101	-	-	12/31/31/31	-
11	FUA	B	1102	-	-	7/11/92/92	0/4/4/4
8	HEX	C	1116	-	-	1/3/3/3	-
5	D12	A	1106	-	-	1/9/9/9	-
17	OCT	C	1118	-	-	3/5/5/5	-
7	GOL	C	1114	-	-	3/4/4/4	-

Continued on next page...

*Continued from previous page...*

Mol	Type	Chain	Res	Link	Chirals	Torsions	Rings
9	EDO	A	1115	-	-	1/1/1/1	-
5	D12	B	1106	-	-	2/9/9/9	-
7	GOL	A	1110	-	-	2/4/4/4	-
8	HEX	B	1113	-	-	0/3/3/3	-
8	HEX	B	1114	-	-	2/3/3/3	-
6	D10	B	1109	-	-	4/7/7/7	-
9	EDO	D	201	-	-	1/1/1/1	-
8	HEX	A	1113	-	-	1/3/3/3	-
7	GOL	C	1115	-	-	4/4/4/4	-
8	HEX	C	1117	-	-	2/3/3/3	-
12	C14	B	1107	-	-	4/11/11/11	-
8	HEX	B	1115	-	-	0/3/3/3	-
4	LMT	A	1105	-	-	10/21/61/61	0/2/2/2
6	D10	A	1108	-	-	3/7/7/7	-
7	GOL	A	1112	-	-	0/4/4/4	-
9	EDO	C	1120	-	-	1/1/1/1	-
4	LMT	A	1102	-	-	8/21/61/61	0/2/2/2
16	PTY	C	1105	-	-	32/53/53/53	-
4	LMT	B	1103	-	-	10/21/61/61	0/2/2/2
6	D10	B	1108	-	-	1/7/7/7	-
7	GOL	C	1112	-	-	2/4/4/4	-
8	HEX	A	1114	-	-	2/3/3/3	-
9	EDO	B	1117	-	-	1/1/1/1	-
4	LMT	C	1106	-	-	10/21/61/61	0/2/2/2
12	C14	C	1109	-	-	4/11/11/11	-
4	LMT	B	1105	-	-	13/21/61/61	0/2/2/2
5	D12	A	1107	-	-	6/9/9/9	-
7	GOL	B	1112	-	-	2/4/4/4	-
9	EDO	B	1118	-	-	1/1/1/1	-
14	LPX	C	1103	-	-	17/31/31/31	-
15	PGE	C	1102	-	-	1/7/7/7	-
4	LMT	A	1104	-	-	9/21/61/61	0/2/2/2
7	GOL	C	1113	-	-	2/4/4/4	-
4	LMT	B	1104	-	-	9/21/61/61	0/2/2/2
4	LMT	A	1103	-	-	9/21/61/61	0/2/2/2
12	C14	C	1108	-	-	4/11/11/11	-

*Continued on next page...*

Continued from previous page...

Mol	Type	Chain	Res	Link	Chirals	Torsions	Rings
9	EDO	B	1116	-	-	1/1/1/1	-
6	D10	A	1109	-	-	4/7/7/7	-
10	DDR	B	1101	-	-	14/29/29/29	-
5	D12	C	1107	-	-	2/9/9/9	-
9	EDO	C	1119	-	-	0/1/1/1	-
6	D10	C	1110	-	-	3/7/7/7	-
15	PGE	C	1104	-	-	5/7/7/7	-
7	GOL	A	1111	-	-	2/4/4/4	-

All (2) bond length outliers are listed below:

Mol	Chain	Res	Type	Atoms	Z	Observed(Å)	Ideal(Å)
10	B	1101	DDR	O51-C1	4.37	1.46	1.33
10	B	1101	DDR	O52-C21	4.25	1.46	1.34

All (6) bond angle outliers are listed below:

Mol	Chain	Res	Type	Atoms	Z	Observed(°)	Ideal(°)
10	B	1101	DDR	O52-C21-C22	4.00	120.11	111.50
4	A	1104	LMT	O1'-C1'-C2'	2.60	112.36	108.30
10	B	1101	DDR	O51-C1-C2	2.60	120.06	111.91
4	B	1105	LMT	C2'-C3'-C4'	2.21	114.73	109.68
4	A	1103	LMT	C1B-O5B-C5B	2.09	117.78	113.69
4	A	1104	LMT	C2'-C3'-C4'	2.04	114.34	109.68

There are no chirality outliers.

All (256) torsion outliers are listed below:

Mol	Chain	Res	Type	Atoms
4	B	1105	LMT	C2'-C1'-O1'-C1
4	B	1105	LMT	O5'-C1'-O1'-C1
7	A	1110	GOL	C1-C2-C3-O3
7	A	1110	GOL	O2-C2-C3-O3
7	C	1112	GOL	C1-C2-C3-O3
7	C	1114	GOL	O1-C1-C2-C3
11	B	1102	FUA	C17-C16-O2-C31
11	B	1102	FUA	C32-C31-O2-C16
11	B	1102	FUA	O3-C31-O2-C16
14	C	1101	LPX	C3-O1-P1-O4
14	C	1101	LPX	O2-C1-C2-N1

Continued on next page...

*Continued from previous page...*

Mol	Chain	Res	Type	Atoms
14	C	1103	LPX	O5-C4-C5-O6
14	C	1103	LPX	C1-O2-P1-O3
14	C	1103	LPX	O2-C1-C2-N1
16	C	1105	PTY	C11-C8-O7-C6
4	A	1104	LMT	O5B-C1B-O1B-C4'
10	B	1101	DDR	O1-C1-O51-C51
16	C	1105	PTY	O10-C8-O7-C6
10	B	1101	DDR	C2-C1-O51-C51
4	A	1105	LMT	O5B-C5B-C6B-O6B
14	C	1101	LPX	O7-C6-O6-C5
16	C	1105	PTY	O30-C30-O4-C1
14	C	1101	LPX	C7-C6-O6-C5
16	C	1105	PTY	C31-C30-O4-C1
4	B	1103	LMT	O5'-C5'-C6'-O6'
4	A	1103	LMT	O5'-C5'-C6'-O6'
4	B	1103	LMT	O5B-C5B-C6B-O6B
4	B	1104	LMT	O5'-C5'-C6'-O6'
4	B	1105	LMT	C4B-C5B-C6B-O6B
4	A	1102	LMT	O5B-C1B-O1B-C4'
11	B	1102	FUA	C24-C25-C26-C28
4	A	1103	LMT	O5B-C5B-C6B-O6B
4	A	1105	LMT	C4B-C5B-C6B-O6B
15	C	1104	PGE	O2-C3-C4-O3
4	A	1103	LMT	C4B-C5B-C6B-O6B
4	C	1106	LMT	C4'-C5'-C6'-O6'
4	B	1103	LMT	C4B-C5B-C6B-O6B
4	B	1103	LMT	C4'-C5'-C6'-O6'
14	C	1101	LPX	C3-C4-C5-O6
4	A	1102	LMT	C2B-C1B-O1B-C4'
4	B	1105	LMT	O5B-C5B-C6B-O6B
4	C	1106	LMT	O5B-C5B-C6B-O6B
4	B	1104	LMT	C4'-C5'-C6'-O6'
10	B	1101	DDR	C21-C22-C23-C24
4	C	1106	LMT	O1'-C1-C2-C3
15	C	1104	PGE	O1-C1-C2-O2
11	B	1102	FUA	C24-C25-C26-C27
4	B	1105	LMT	O1'-C1-C2-C3
14	C	1103	LPX	C3-O1-P1-O2
14	C	1103	LPX	C1-O2-P1-O1
16	C	1105	PTY	C3-O11-P1-O14
3	A	1101	XPE	O4-C5-C6-O7
10	B	1101	DDR	C22-C21-O52-C52

*Continued on next page...*

*Continued from previous page...*

Mol	Chain	Res	Type	Atoms
4	C	1106	LMT	O5'-C5'-C6'-O6'
14	C	1101	LPX	C14-C15-C16-C17
16	C	1105	PTY	C13-C14-C15-C16
16	C	1105	PTY	C24-C25-C26-C27
3	A	1101	XPE	C15-C14-O13-C12
4	A	1102	LMT	C6-C7-C8-C9
5	A	1107	D12	C7-C8-C9-C10
6	C	1110	D10	C5-C6-C7-C8
12	C	1109	C14	C10-C11-C12-C13
16	C	1105	PTY	C31-C32-C33-C34
10	B	1101	DDR	O21-C21-O52-C52
4	A	1104	LMT	C4-C5-C6-C7
16	C	1105	PTY	C35-C36-C37-C38
4	A	1103	LMT	C4-C5-C6-C7
4	C	1106	LMT	C6-C7-C8-C9
6	C	1110	D10	C4-C5-C6-C7
4	B	1103	LMT	C5-C6-C7-C8
4	C	1106	LMT	C5-C6-C7-C8
12	C	1109	C14	C06-C07-C08-C09
8	C	1116	HEX	C2-C3-C4-C5
14	C	1103	LPX	C7-C8-C9-C10
7	A	1111	GOL	C1-C2-C3-O3
7	B	1112	GOL	C1-C2-C3-O3
7	C	1113	GOL	O1-C1-C2-C3
7	C	1115	GOL	C1-C2-C3-O3
14	C	1101	LPX	O5-C4-C5-O6
16	C	1105	PTY	C22-C23-C24-C25
4	A	1103	LMT	C4'-C5'-C6'-O6'
6	A	1109	D10	C5-C6-C7-C8
10	B	1101	DDR	C3-C4-C5-C6
14	C	1103	LPX	C11-C12-C13-C14
16	C	1105	PTY	C23-C24-C25-C26
3	A	1101	XPE	O28-C29-C30-O31
15	C	1104	PGE	O3-C5-C6-O4
4	B	1105	LMT	C3-C4-C5-C6
17	C	1118	OCT	C2-C3-C4-C5
16	C	1105	PTY	C8-C11-C12-C13
4	C	1106	LMT	C2-C3-C4-C5
14	C	1103	LPX	C13-C14-C15-C16
3	A	1101	XPE	O16-C17-C18-O19
4	B	1104	LMT	C3-C4-C5-C6
12	C	1108	C14	C07-C08-C09-C10

*Continued on next page...*

*Continued from previous page...*

Mol	Chain	Res	Type	Atoms
4	A	1103	LMT	C1-C2-C3-C4
4	B	1103	LMT	C2-C3-C4-C5
4	A	1105	LMT	O1'-C1-C2-C3
4	A	1104	LMT	C7-C8-C9-C10
16	C	1105	PTY	C14-C15-C16-C17
4	B	1103	LMT	C1-C2-C3-C4
14	C	1103	LPX	C15-C16-C17-C18
9	A	1115	EDO	O1-C1-C2-O2
9	B	1117	EDO	O1-C1-C2-O2
9	B	1118	EDO	O1-C1-C2-O2
4	A	1103	LMT	C11-C10-C9-C8
4	A	1104	LMT	C3'-C4'-O1B-C1B
4	A	1104	LMT	C2-C3-C4-C5
16	C	1105	PTY	C30-C31-C32-C33
17	C	1118	OCT	C4-C5-C6-C7
4	B	1103	LMT	O1'-C1-C2-C3
5	B	1106	D12	C11-C10-C9-C8
5	A	1107	D12	C4-C5-C6-C7
16	C	1105	PTY	C32-C33-C34-C35
12	B	1107	C14	C05-C06-C07-C08
6	C	1110	D10	C3-C4-C5-C6
4	A	1104	LMT	C5'-C4'-O1B-C1B
8	C	1117	HEX	C2-C3-C4-C5
6	A	1108	D10	C4-C5-C6-C7
4	C	1106	LMT	C4B-C5B-C6B-O6B
6	A	1109	D10	C4-C5-C6-C7
16	C	1105	PTY	C17-C18-C19-C20
16	C	1105	PTY	C39-C40-C41-C42
6	B	1109	D10	C5-C6-C7-C8
12	B	1107	C14	C06-C07-C08-C09
14	C	1101	LPX	C16-C17-C18-C19
7	C	1112	GOL	O2-C2-C3-O3
7	C	1114	GOL	O1-C1-C2-O2
4	B	1103	LMT	C9-C10-C11-C12
12	C	1108	C14	C11-C12-C13-C14
4	A	1102	LMT	O5B-C5B-C6B-O6B
4	A	1104	LMT	O1'-C1-C2-C3
14	C	1103	LPX	C3-C4-C5-O6
14	C	1101	LPX	C18-C19-C20-C21
6	B	1109	D10	C7-C8-C9-C10
9	B	1116	EDO	O1-C1-C2-O2
4	A	1105	LMT	C4-C5-C6-C7

*Continued on next page...*

*Continued from previous page...*

Mol	Chain	Res	Type	Atoms
5	C	1107	D12	C5-C6-C7-C8
6	B	1109	D10	C2-C3-C4-C5
14	C	1103	LPX	C18-C19-C20-C21
16	C	1105	PTY	C18-C19-C20-C21
7	C	1114	GOL	C1-C2-C3-O3
4	B	1104	LMT	C7-C8-C9-C10
12	B	1107	C14	C01-C02-C03-C04
8	A	1113	HEX	C2-C3-C4-C5
16	C	1105	PTY	C41-C42-C43-C44
16	C	1105	PTY	C6-C5-O14-P1
8	B	1114	HEX	C2-C3-C4-C5
4	A	1105	LMT	C2-C1-O1'-C1'
4	B	1105	LMT	C2-C1-O1'-C1'
10	B	1101	DDR	O51-C51-C52-C53
16	C	1105	PTY	O4-C1-C6-C5
3	A	1101	XPE	O7-C8-C9-O10
4	B	1105	LMT	C3'-C4'-O1B-C1B
4	A	1105	LMT	C2-C3-C4-C5
6	A	1109	D10	C3-C4-C5-C6
6	A	1108	D10	C3-C4-C5-C6
10	B	1101	DDR	O51-C51-C52-O52
5	B	1106	D12	C1-C2-C3-C4
16	C	1105	PTY	C38-C39-C40-C41
3	A	1101	XPE	C20-C21-O22-C23
5	C	1107	D12	C4-C5-C6-C7
4	B	1105	LMT	C6-C7-C8-C9
3	A	1101	XPE	O19-C20-C21-O22
4	A	1102	LMT	C9-C10-C11-C12
4	A	1105	LMT	C4'-C5'-C6'-O6'
4	A	1105	LMT	C1-C2-C3-C4
11	B	1102	FUA	C15-C16-O2-C31
5	A	1107	D12	C3-C4-C5-C6
15	C	1102	PGE	C1-C2-O2-C3
16	C	1105	PTY	O4-C1-C6-O7
7	C	1115	GOL	O1-C1-C2-O2
3	A	1101	XPE	O1-C2-C3-O4
4	B	1105	LMT	C5'-C4'-O1B-C1B
14	C	1103	LPX	C3-O1-P1-O4
16	C	1105	PTY	C3-O11-P1-O13
14	C	1103	LPX	C10-C11-C12-C13
6	A	1108	D10	C5-C6-C7-C8
6	A	1109	D10	C6-C7-C8-C9

*Continued on next page...*

*Continued from previous page...*

Mol	Chain	Res	Type	Atoms
14	C	1103	LPX	C2-C1-O2-P1
16	C	1105	PTY	C26-C27-C28-C29
3	A	1101	XPE	C11-C12-O13-C14
4	A	1104	LMT	C9-C10-C11-C12
8	A	1114	HEX	C1-C2-C3-C4
4	A	1105	LMT	O5'-C5'-C6'-O6'
8	C	1117	HEX	C1-C2-C3-C4
10	B	1101	DDR	C22-C23-C24-C25
3	A	1101	XPE	C30-C29-O28-C27
16	C	1105	PTY	C40-C41-C42-C43
4	B	1103	LMT	C11-C10-C9-C8
4	A	1105	LMT	C11-C10-C9-C8
15	C	1104	PGE	C3-C4-O3-C5
4	A	1103	LMT	C5-C6-C7-C8
3	A	1101	XPE	C14-C15-O16-C17
9	D	201	EDO	O1-C1-C2-O2
8	A	1114	HEX	C2-C3-C4-C5
12	B	1107	C14	C08-C09-C10-C11
6	B	1108	D10	C2-C3-C4-C5
16	C	1105	PTY	C5-O14-P1-O11
4	B	1105	LMT	C11-C10-C9-C8
7	B	1112	GOL	O2-C2-C3-O3
7	C	1115	GOL	O2-C2-C3-O3
5	A	1107	D12	C11-C10-C9-C8
12	C	1108	C14	C03-C04-C05-C06
3	A	1101	XPE	C9-C8-O7-C6
14	C	1101	LPX	C11-C10-C9-C8
10	B	1101	DDR	C1-C2-C3-C4
4	C	1106	LMT	C1-C2-C3-C4
4	A	1102	LMT	O1'-C1-C2-C3
4	A	1102	LMT	C5-C6-C7-C8
12	C	1108	C14	C09-C10-C11-C12
14	C	1103	LPX	O1-C3-C4-O5
4	B	1104	LMT	O5'-C1'-O1'-C1
6	B	1109	D10	C1-C2-C3-C4
14	C	1101	LPX	C3-O1-P1-O2
14	C	1103	LPX	C16-C17-C18-C19
14	C	1101	LPX	C10-C11-C12-C13
4	A	1102	LMT	C11-C10-C9-C8
10	B	1101	DDR	C51-C52-C53-O53
11	B	1102	FUA	C22-C23-C24-C25
3	A	1101	XPE	C8-C9-O10-C11

*Continued on next page...*



*Continued from previous page...*

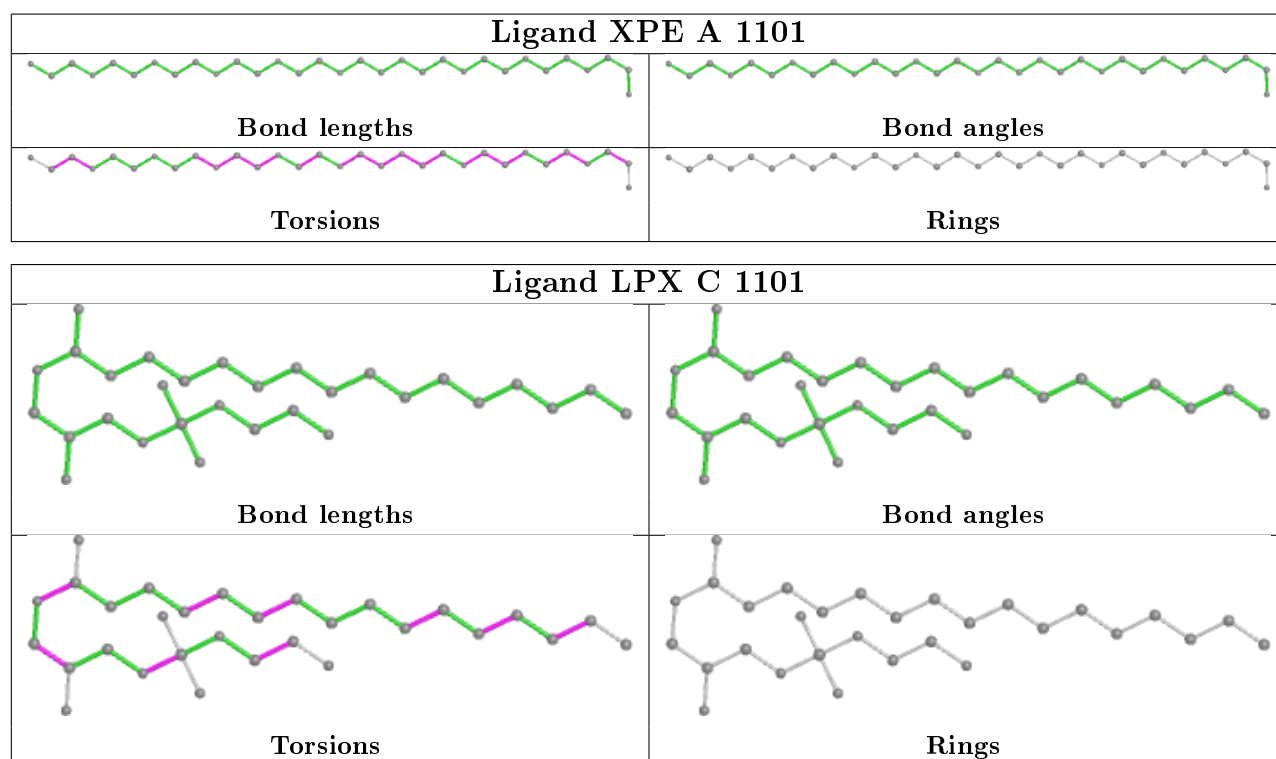
Mol	Chain	Res	Type	Atoms
5	A	1107	D12	C9-C10-C11-C12
7	C	1115	GOL	O1-C1-C2-C3
17	C	1118	OCT	C3-C4-C5-C6
10	B	1101	DDR	O52-C52-C53-O53
4	B	1104	LMT	C2'-C1'-O1'-C1
5	A	1107	D12	C1-C2-C3-C4
16	C	1105	PTY	O4-C30-C31-C32
12	C	1109	C14	C08-C09-C10-C11
4	B	1105	LMT	O5B-C1B-O1B-C4'
10	B	1101	DDR	O52-C21-C22-C23
3	A	1101	XPE	O13-C14-C15-O16
9	C	1120	EDO	O1-C1-C2-O2
4	C	1106	LMT	C4-C5-C6-C7
5	A	1106	D12	C7-C8-C9-C10
3	A	1101	XPE	C6-C5-O4-C3
7	C	1113	GOL	O1-C1-C2-O2
12	C	1109	C14	C04-C05-C06-C07
16	C	1105	PTY	O30-C30-C31-C32
4	B	1104	LMT	C5'-C4'-O1B-C1B
10	B	1101	DDR	O21-C21-C22-C23
4	A	1103	LMT	C9-C10-C11-C12
8	B	1114	HEX	C3-C4-C5-C6
16	C	1105	PTY	C5-O14-P1-O13
16	C	1105	PTY	C36-C37-C38-C39
16	C	1105	PTY	C2-C3-O11-P1
7	A	1111	GOL	O2-C2-C3-O3
4	B	1104	LMT	C3'-C4'-O1B-C1B
15	C	1104	PGE	C6-C5-O3-C4
4	B	1105	LMT	C2B-C1B-O1B-C4'
14	C	1103	LPX	C11-C10-C9-C8
3	A	1101	XPE	O10-C11-C12-O13
4	B	1104	LMT	C2-C1-O1'-C1'
3	A	1101	XPE	C21-C20-O19-C18
3	A	1101	XPE	C24-C23-O22-C21
4	A	1104	LMT	C5-C6-C7-C8

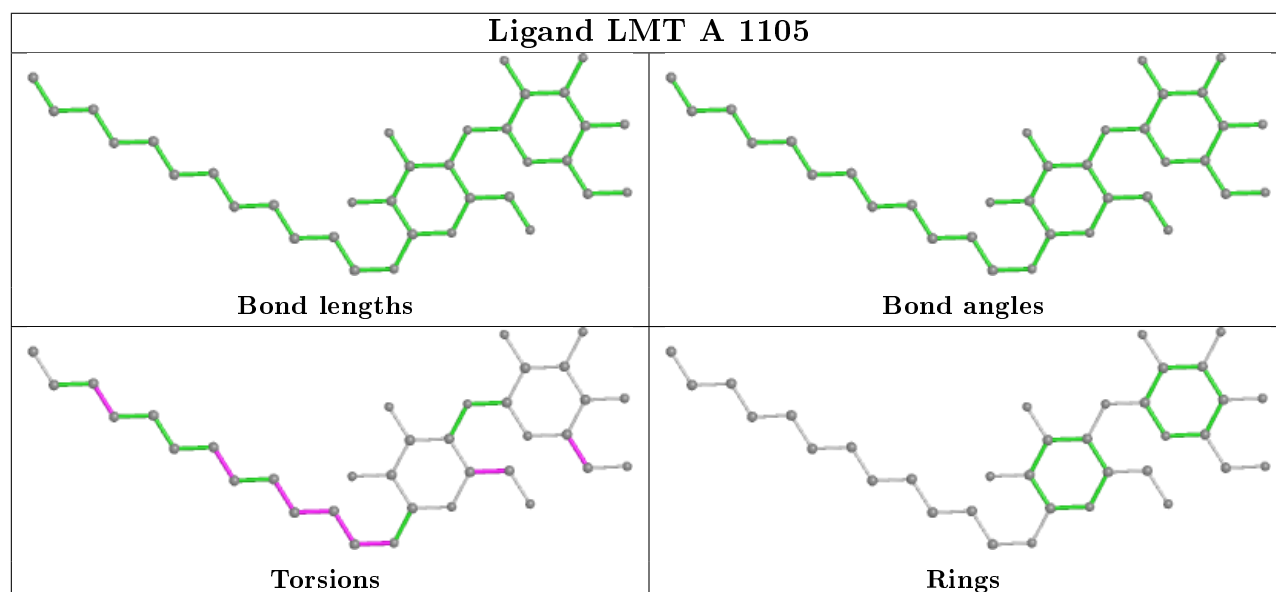
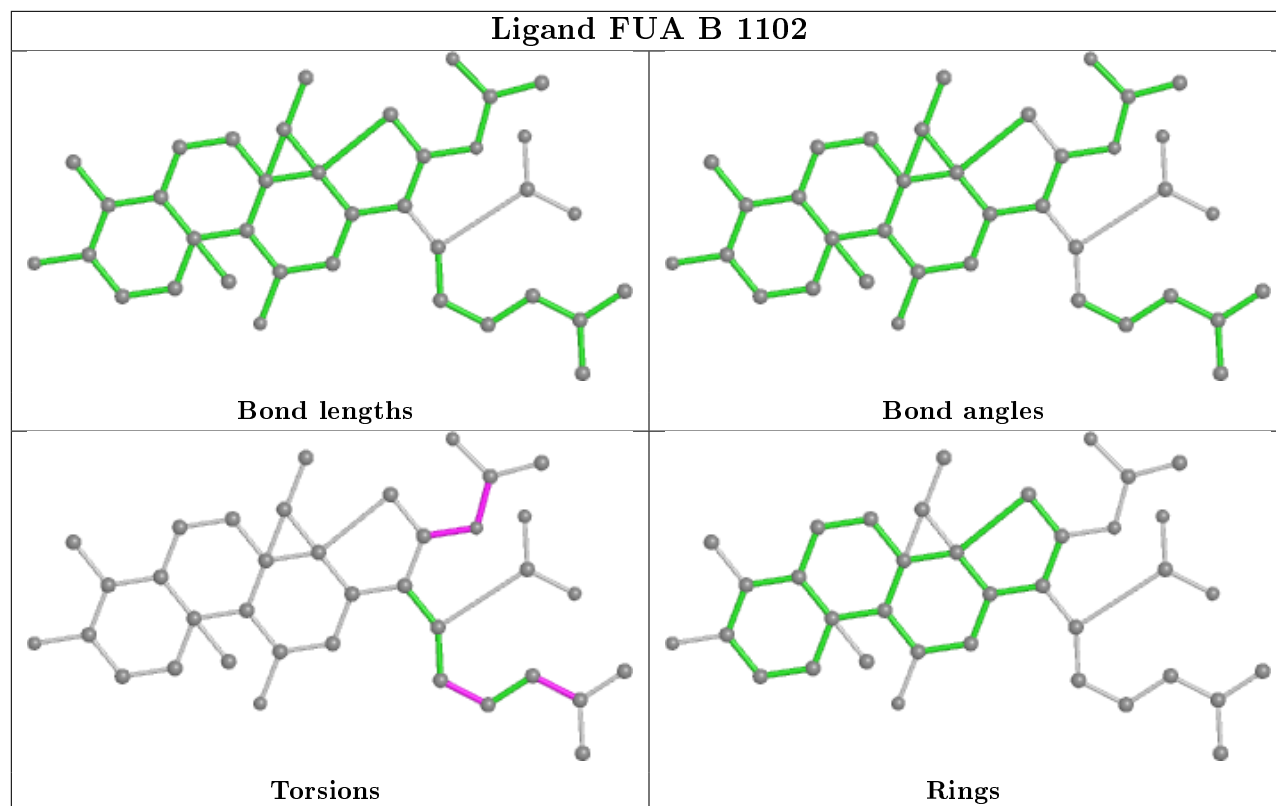
There are no ring outliers.

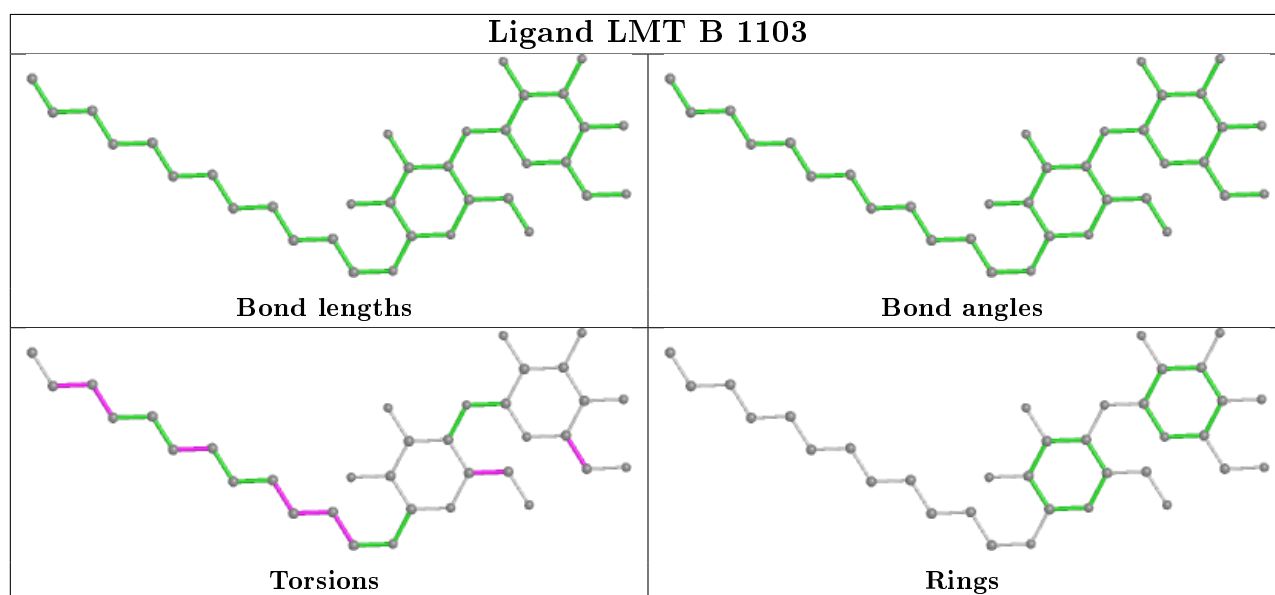
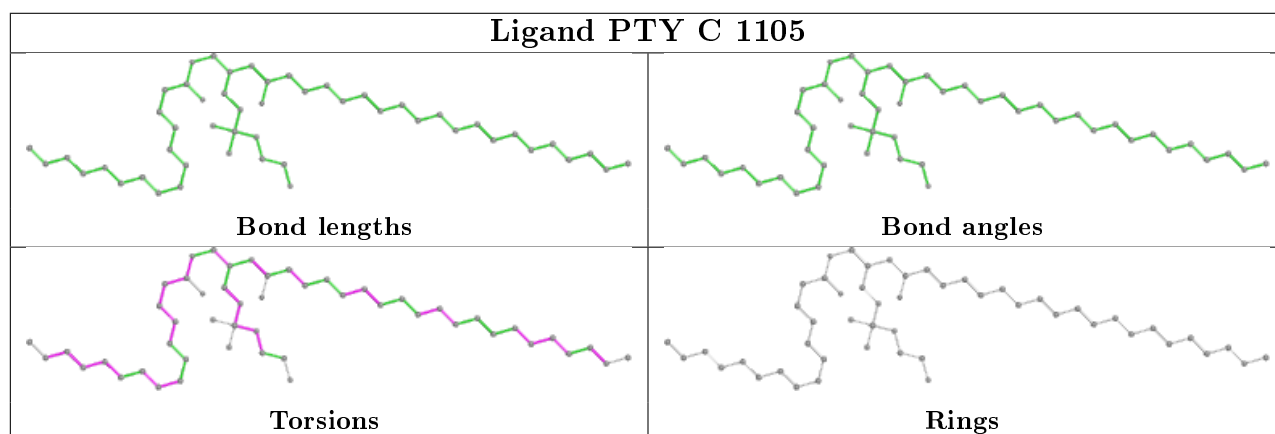
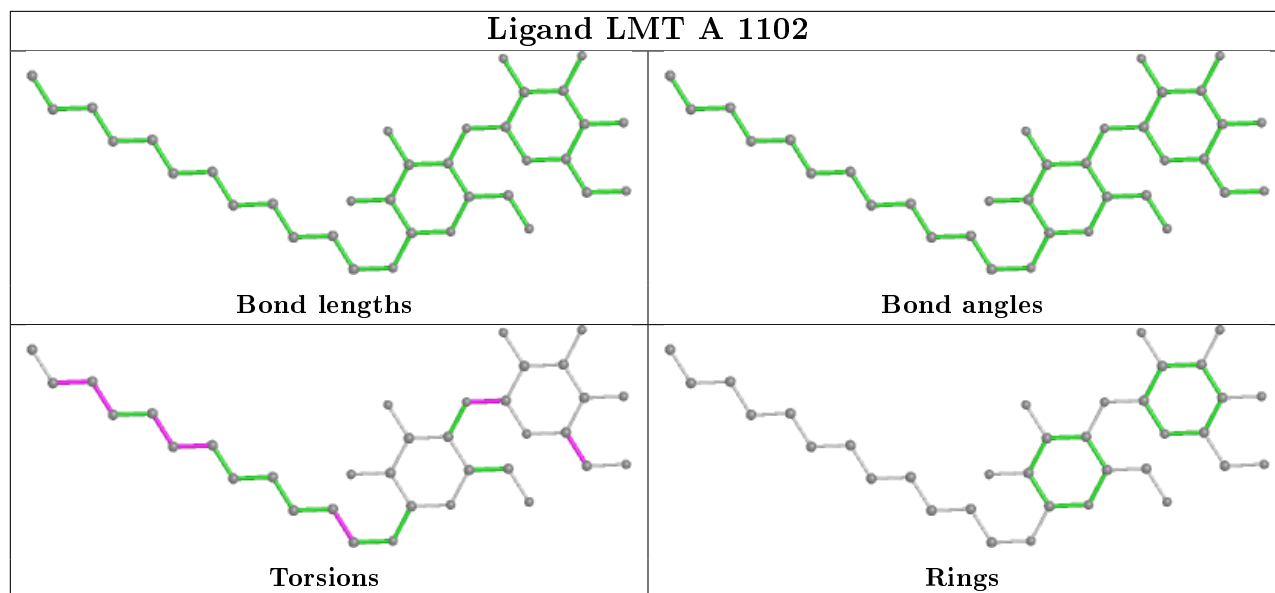
1 monomer is involved in 4 short contacts:

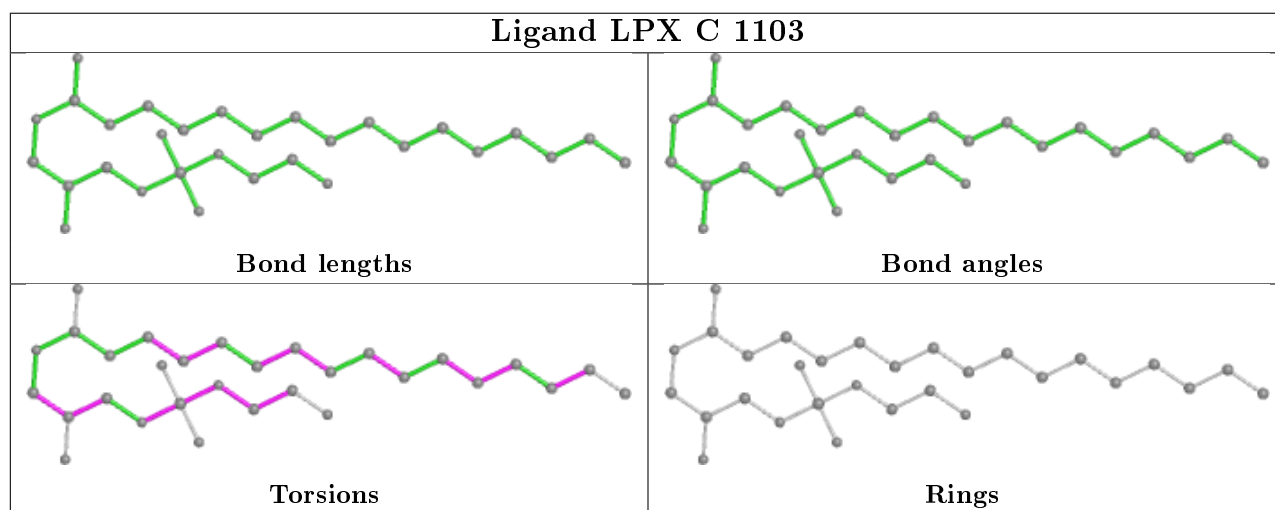
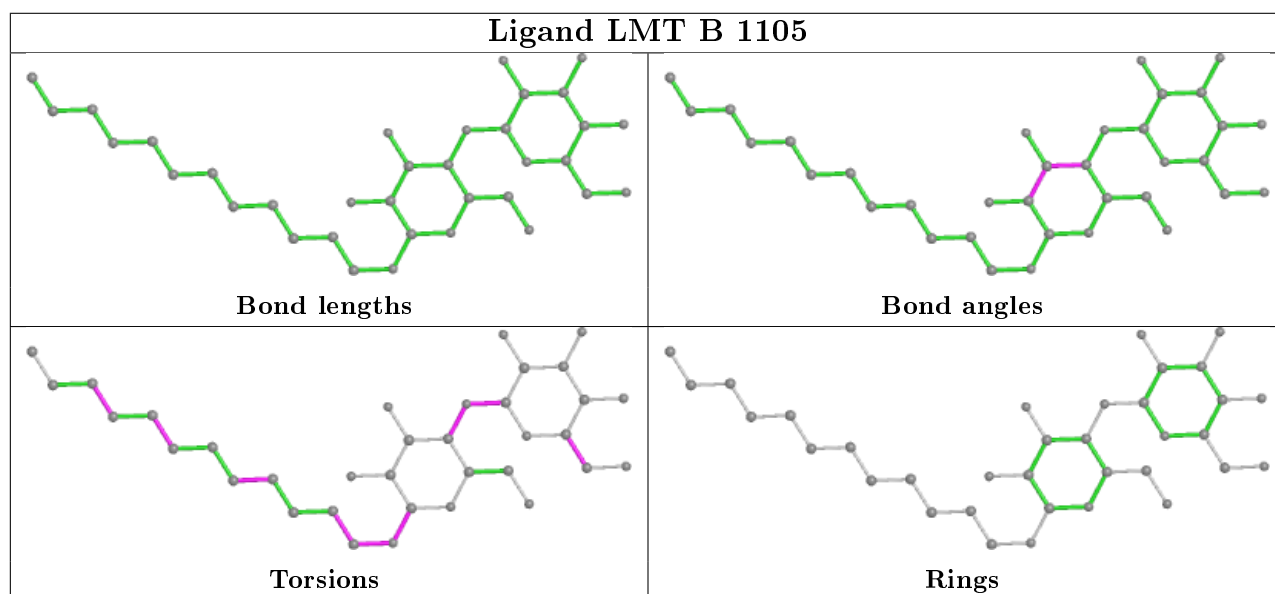
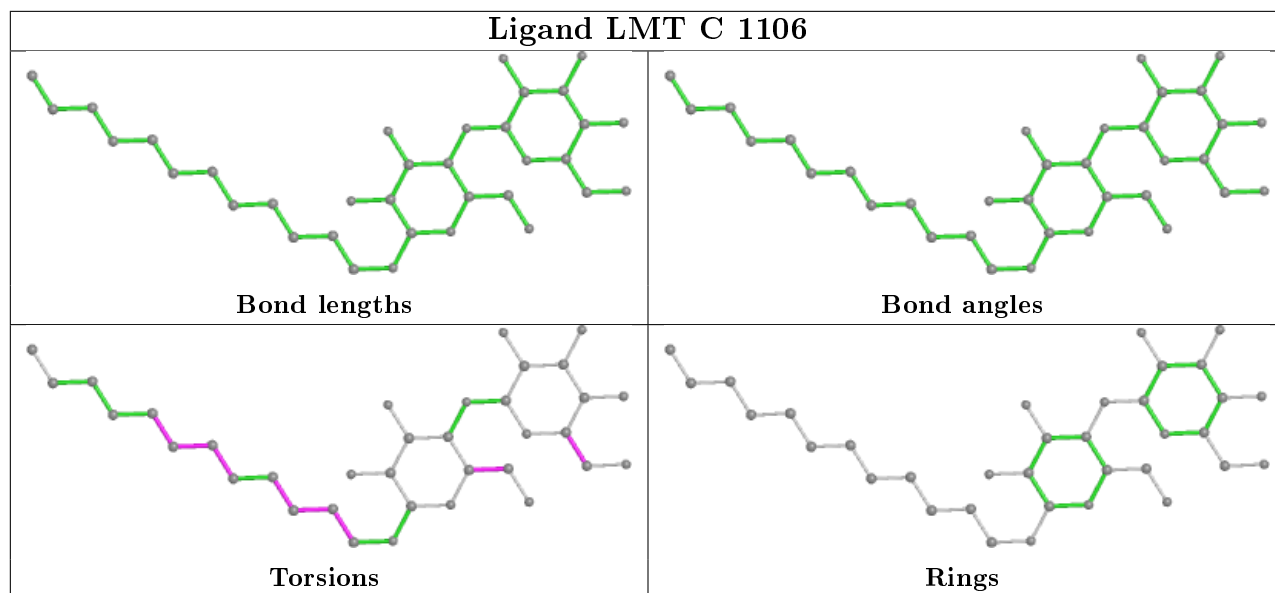
Mol	Chain	Res	Type	Clashes	Symm-Clashes
11	B	1102	FUA	4	0

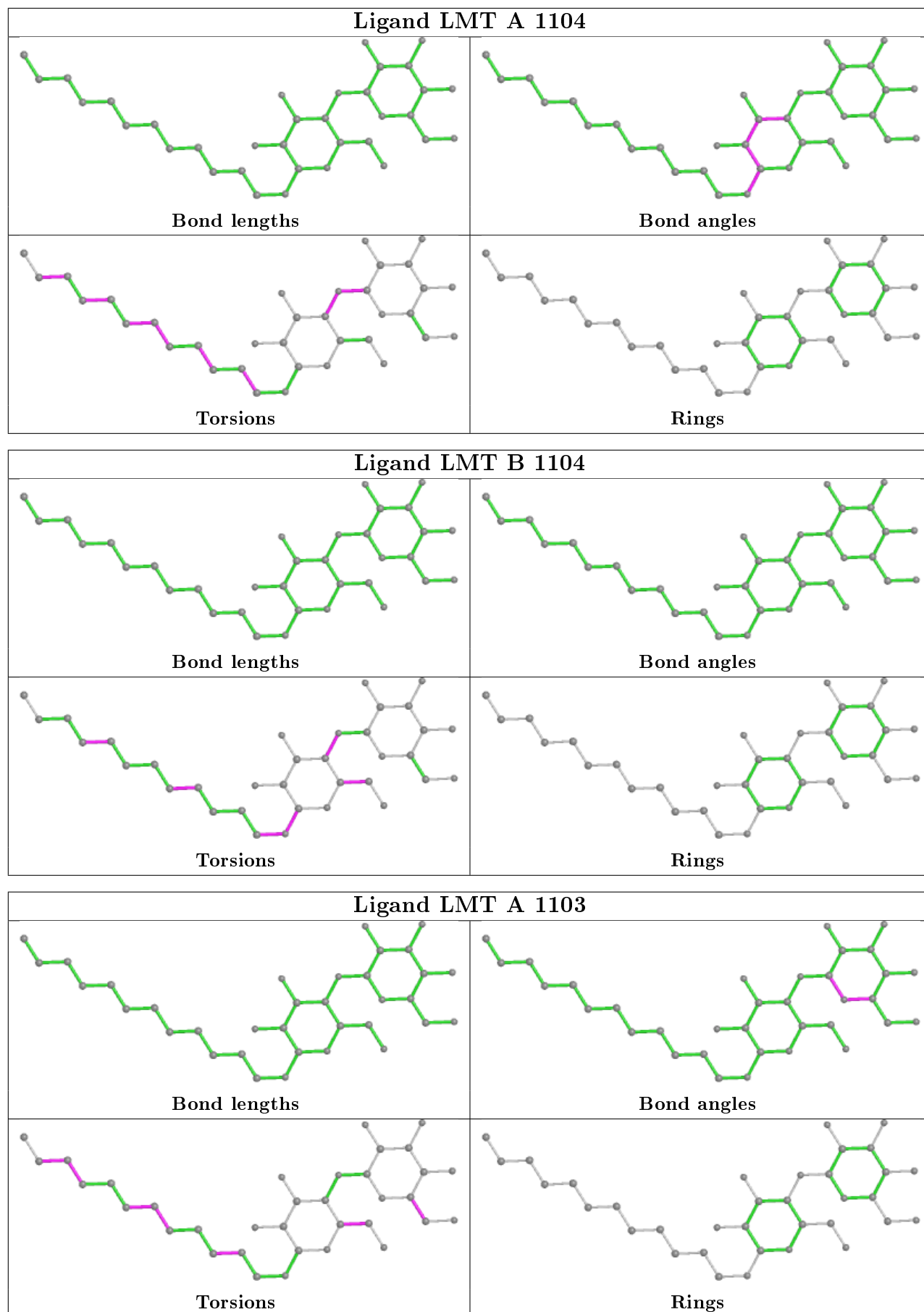
The following is a two-dimensional graphical depiction of Mogul quality analysis of bond lengths, bond angles, torsion angles, and ring geometry for all instances of the Ligand of Interest. In addition, ligands with molecular weight > 250 and outliers as shown on the validation Tables will also be included. For torsion angles, if less than 5% of the Mogul distribution of torsion angles is within 10 degrees of the torsion angle in question, then that torsion angle is considered an outlier. Any bond that is central to one or more torsion angles identified as an outlier by Mogul will be highlighted in the graph. For rings, the root-mean-square deviation (RMSD) between the ring in question and similar rings identified by Mogul is calculated over all ring torsion angles. If the average RMSD is greater than 60 degrees and the minimal RMSD between the ring in question and any Mogul-identified rings is also greater than 60 degrees, then that ring is considered an outlier. The outliers are highlighted in purple. The color gray indicates Mogul did not find sufficient equivalents in the CSD to analyse the geometry.

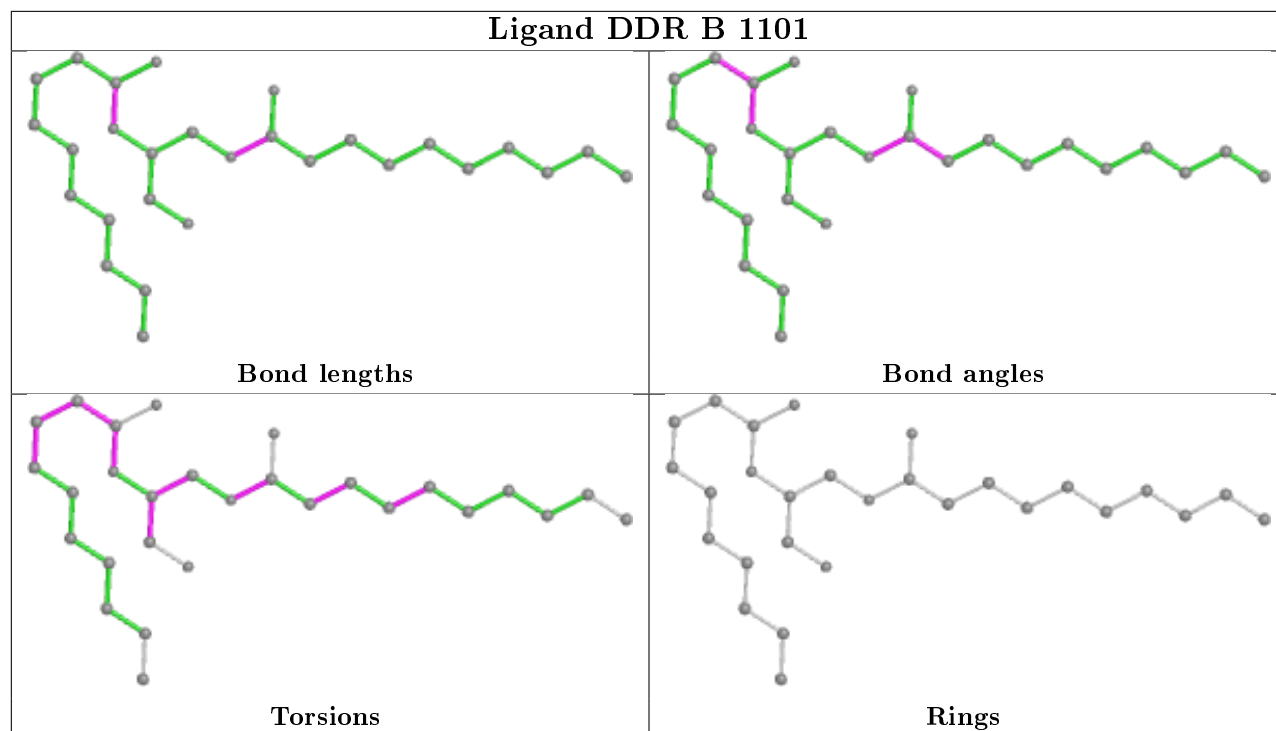












## 5.7 Other polymers [i](#)

There are no such residues in this entry.

## 5.8 Polymer linkage issues [i](#)

There are no chain breaks in this entry.

## 6 Fit of model and data [i](#)

### 6.1 Protein, DNA and RNA chains [i](#)

In the following table, the column labelled ‘#RSRZ> 2’ contains the number (and percentage) of RSRZ outliers, followed by percent RSRZ outliers for the chain as percentile scores relative to all X-ray entries and entries of similar resolution. The OWAB column contains the minimum, median, 95<sup>th</sup> percentile and maximum values of the occupancy-weighted average B-factor per residue. The column labelled ‘Q< 0.9’ lists the number of (and percentage) of residues with an average occupancy less than 0.9.

Mol	Chain	Analysed	<RSRZ>	#RSRZ>2	OWAB(Å <sup>2</sup> )	Q<0.9
1	A	1034/1057 (97%)	0.39	52 (5%) 28 30	35, 50, 73, 82	7 (0%)
1	B	1034/1057 (97%)	0.25	37 (3%) 42 46	36, 50, 60, 66	5 (0%)
1	C	1034/1057 (97%)	0.14	21 (2%) 65 68	33, 41, 55, 62	0
2	D	155/169 (91%)	0.27	5 (3%) 47 51	40, 50, 63, 73	0
2	E	153/169 (90%)	1.26	36 (23%) 0 0	49, 62, 79, 86	0
All	All	3410/3509 (97%)	0.31	151 (4%) 34 37	33, 48, 66, 86	12 (0%)

All (151) RSRZ outliers are listed below:

Mol	Chain	Res	Type	RSRZ
1	A	677	ALA	9.0
1	A	868	LEU	8.3
1	A	675	GLY	7.0
1	A	678	THR	6.7
1	B	134	SER	5.9
1	A	869	SER	5.6
2	E	35	ALA	5.5
1	A	870	GLY	5.5
1	A	672	VAL	5.3
1	A	512	PHE	5.3
2	E	33	LEU	5.2
1	A	865	GLN	5.0
1	B	868	LEU	4.8
1	A	867	ARG	4.7
1	B	678	THR	4.6
1	A	676	THR	4.6
1	A	866	GLU	4.5
1	B	660	ASP	4.5
2	E	66	LEU	4.4
1	B	255	GLN	4.2

*Continued on next page...*



*Continued from previous page...*

<b>Mol</b>	<b>Chain</b>	<b>Res</b>	<b>Type</b>	<b>RSRZ</b>
2	E	31	ARG	4.2
2	E	68	LYS	4.1
1	B	635	ALA	4.1
1	C	362	PHE	4.1
1	A	833	PRO	4.0
1	A	871	ASN	4.0
1	A	834	GLY	4.0
1	C	510	LYS	3.9
1	C	1034	SER	3.9
2	E	106	VAL	3.9
2	E	34	MET	3.9
1	C	511	GLY	3.7
1	A	508	GLY	3.7
2	E	165	LEU	3.6
1	B	1034	SER	3.6
1	A	836	SER	3.6
1	B	508	GLY	3.6
2	E	107	ASN	3.6
1	A	38	ILE	3.6
1	B	603	LYS	3.6
1	C	513	PHE	3.5
1	A	515	TRP	3.5
1	A	255	GLN	3.5
2	E	70	GLY	3.5
1	B	634	TRP	3.5
2	E	32	ILE	3.4
1	C	811	TYR	3.4
2	E	30	VAL	3.4
2	E	139	VAL	3.4
2	E	28	ASP	3.4
1	C	512	PHE	3.3
1	B	832	ALA	3.3
1	A	510	LYS	3.3
1	A	918	PHE	3.3
2	D	166	GLN	3.3
2	E	27	ASP	3.3
1	A	505	HIS	3.2
1	B	639	GLY	3.2
1	B	600	THR	3.2
1	A	500	ILE	3.2
1	A	670	ALA	3.1
2	E	36	ASN	3.1

*Continued on next page...*

*Continued from previous page...*

<b>Mol</b>	<b>Chain</b>	<b>Res</b>	<b>Type</b>	<b>RSRZ</b>
1	A	956	GLU	3.1
1	C	498	LYS	3.0
1	A	501	ALA	3.0
1	A	674	LEU	3.0
2	D	165	LEU	3.0
1	A	831	ALA	3.0
1	A	461	GLY	2.9
1	B	510	LYS	2.9
1	A	362	PHE	2.9
1	B	638	PRO	2.9
1	A	712	MET	2.8
1	B	866	GLU	2.8
1	A	519	MET	2.8
1	B	501	ALA	2.8
2	E	101	LYS	2.8
1	B	677	ALA	2.8
1	C	501	ALA	2.8
1	C	737	GLN	2.8
2	E	38	ALA	2.8
2	D	163	GLU	2.7
1	B	642	ASN	2.7
1	B	256	ASP	2.6
1	B	674	LEU	2.6
1	A	429	GLU	2.6
1	B	606	VAL	2.6
1	A	503	GLY	2.6
1	A	958	LYS	2.6
2	D	150	PHE	2.6
2	E	74	ASN	2.6
2	E	162	ALA	2.6
1	B	834	GLY	2.6
2	E	76	TYR	2.6
1	A	944	LEU	2.5
1	C	1032	ARG	2.5
2	E	73	VAL	2.5
2	E	37	GLY	2.5
1	C	112[A]	GLN	2.5
2	E	97	GLU	2.5
1	B	558	ARG	2.5
1	B	633	ASP	2.4
1	C	500	ILE	2.4
2	E	108	ALA	2.4

*Continued on next page...*

*Continued from previous page...*

<b>Mol</b>	<b>Chain</b>	<b>Res</b>	<b>Type</b>	<b>RSRZ</b>
1	B	640	GLU	2.4
1	A	462	SER	2.4
2	E	130	GLU	2.4
1	A	673	GLU	2.4
1	B	617	PHE	2.4
1	C	255	GLN	2.4
1	A	957	GLY	2.3
2	D	28	ASP	2.3
1	A	830	GLN	2.3
1	B	597	TYR	2.3
1	C	807	SER	2.3
1	A	554	TYR	2.3
1	A	423	GLU	2.3
1	B	596	HIS	2.2
1	A	509	LYS	2.2
1	B	657	GLN	2.2
1	C	957	GLY	2.2
1	B	604	ASN	2.2
2	E	159	GLU	2.2
1	C	508	GLY	2.2
2	E	100	LEU	2.2
1	C	729	ILE	2.2
1	A	356	TYR	2.1
2	E	140	ASN	2.1
1	A	872	GLN	2.1
2	E	166	GLN	2.1
1	B	867	ARG	2.1
2	E	69	ASN	2.1
2	E	122	ASN	2.1
2	E	145	PHE	2.1
1	B	599	LEU	2.1
2	E	148	THR	2.1
1	B	641	GLU	2.1
1	B	1033	PHE	2.1
2	E	64	GLU	2.1
1	C	730	ASP	2.1
1	A	711	ASP	2.1
1	C	918	PHE	2.1
2	E	150	PHE	2.1
1	A	846	GLN	2.1
1	A	839	GLU	2.1
1	A	671	ILE	2.0

*Continued on next page...*

*Continued from previous page...*

Mol	Chain	Res	Type	RSRZ
1	C	497	LEU	2.0
1	A	522	LYS	2.0
1	A	537	SER	2.0
1	B	601	LYS	2.0
1	B	665	ALA	2.0

## 6.2 Non-standard residues in protein, DNA, RNA chains [i](#)

There are no non-standard protein/DNA/RNA residues in this entry.

## 6.3 Carbohydrates [i](#)

There are no monosaccharides in this entry.

## 6.4 Ligands [i](#)

In the following table, the Atoms column lists the number of modelled atoms in the group and the number defined in the chemical component dictionary. The B-factors column lists the minimum, median, 95<sup>th</sup> percentile and maximum values of B factors of atoms in the group. The column labelled 'Q< 0.9' lists the number of atoms with occupancy less than 0.9.

Mol	Type	Chain	Res	Atoms	RSCC	RSR	B-factors( $\text{\AA}^2$ )	Q<0.9
4	LMT	B	1105	35/35	0.64	0.34	74,87,95,95	0
6	D10	B	1108	10/10	0.66	0.26	70,71,72,72	0
5	D12	A	1107	12/12	0.67	0.25	75,75,76,76	0
15	PGE	C	1104	10/10	0.69	0.39	65,66,67,67	0
16	PTY	C	1105	50/50	0.70	0.30	73,87,91,93	0
4	LMT	A	1102	35/35	0.71	0.28	66,74,83,83	0
9	EDO	B	1118	4/4	0.71	0.20	65,65,65,65	0
8	HEX	B	1115	6/6	0.75	0.21	64,64,65,65	0
6	D10	A	1109	10/10	0.77	0.18	74,75,75,75	0
8	HEX	A	1114	6/6	0.77	0.21	68,68,68,68	0
6	D10	C	1110	10/10	0.78	0.23	72,72,73,73	0
14	LPX	C	1103	30/30	0.78	0.27	53,57,61,62	0
3	XPE	A	1101	31/31	0.78	0.21	77,79,80,80	0
4	LMT	A	1104	35/35	0.78	0.31	70,80,84,84	0
10	DDR	B	1101	28/28	0.80	0.31	57,58,60,60	0
7	GOL	C	1115	6/6	0.80	0.24	83,83,83,83	0
9	EDO	B	1116	4/4	0.80	0.27	56,56,56,56	0
5	D12	A	1106	12/12	0.80	0.20	68,69,70,70	0

*Continued on next page...*

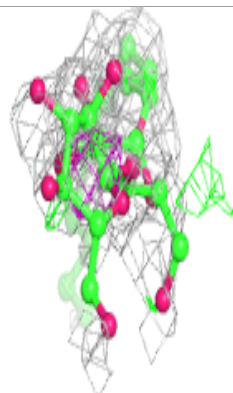
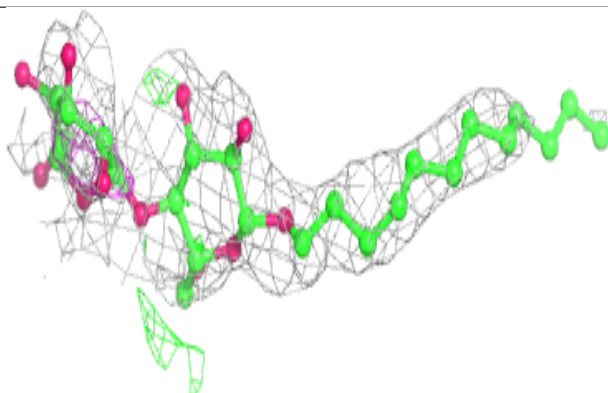
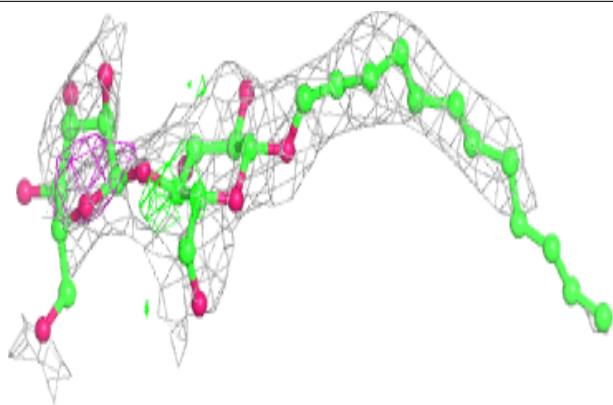
*Continued from previous page...*

Mol	Type	Chain	Res	Atoms	RSCC	RSR	B-factors(Å <sup>2</sup> )	Q<0.9
5	D12	C	1107	12/12	0.81	0.33	65,66,67,67	0
8	HEX	A	1113	6/6	0.81	0.20	64,64,64,64	0
12	C14	B	1107	14/14	0.81	0.21	62,65,68,68	0
6	D10	B	1109	10/10	0.81	0.12	72,73,73,73	0
5	D12	B	1106	12/12	0.81	0.21	68,69,71,71	0
7	GOL	A	1110	6/6	0.81	0.64	57,58,58,58	0
7	GOL	C	1113	6/6	0.82	0.23	59,60,60,60	0
17	OCT	C	1118	8/8	0.82	0.21	57,57,58,58	0
4	LMT	A	1103	35/35	0.83	0.21	64,71,78,78	0
12	C14	C	1109	14/14	0.83	0.18	70,71,73,73	0
12	C14	C	1108	14/14	0.84	0.22	63,65,68,68	0
9	EDO	B	1117	4/4	0.84	0.24	64,64,64,65	0
8	HEX	C	1116	6/6	0.84	0.27	55,55,56,56	0
9	EDO	A	1115	4/4	0.85	0.22	60,60,60,60	0
4	LMT	B	1103	35/35	0.85	0.25	68,69,77,78	0
8	HEX	B	1114	6/6	0.85	0.25	63,63,63,63	0
4	LMT	B	1104	35/35	0.86	0.22	70,73,73,74	0
9	EDO	C	1120	4/4	0.86	0.20	55,55,55,56	0
7	GOL	A	1111	6/6	0.86	0.23	52,52,52,52	0
14	LPX	C	1101	30/30	0.86	0.24	55,56,57,58	0
15	PGE	C	1102	10/10	0.87	0.28	62,64,65,65	0
13	SO4	B	1111	5/5	0.87	0.27	99,99,99,99	0
11	FUA	B	1102	37/37	0.87	0.26	56,58,60,61	0
4	LMT	A	1105	35/35	0.87	0.28	73,77,79,79	0
8	HEX	C	1117	6/6	0.88	0.19	63,63,63,63	0
7	GOL	A	1112	6/6	0.89	0.14	68,68,68,69	0
9	EDO	C	1119	4/4	0.90	0.31	50,51,51,51	0
7	GOL	C	1112	6/6	0.90	0.24	51,51,51,51	0
4	LMT	C	1106	35/35	0.91	0.21	56,59,67,68	0
9	EDO	D	201	4/4	0.92	0.12	63,63,63,63	0
6	D10	A	1108	10/10	0.93	0.18	66,66,66,66	0
7	GOL	B	1112	6/6	0.93	0.24	53,53,54,54	0
7	GOL	C	1114	6/6	0.94	0.17	44,44,44,44	0
13	SO4	B	1110	5/5	0.96	0.17	75,75,75,76	0
8	HEX	B	1113	6/6	0.96	0.22	56,56,56,56	0
13	SO4	C	1111	5/5	0.97	0.10	66,66,66,67	0

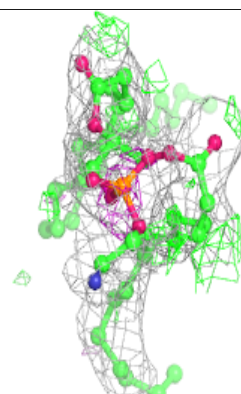
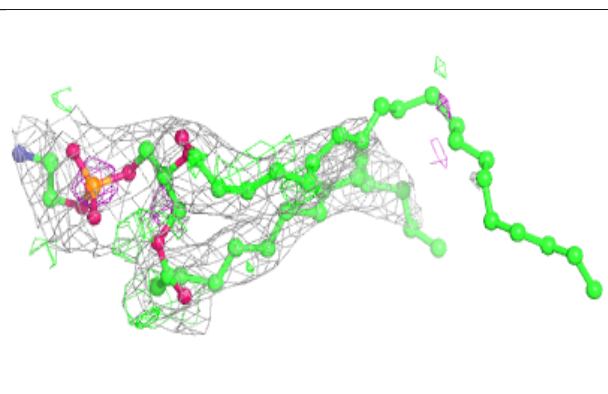
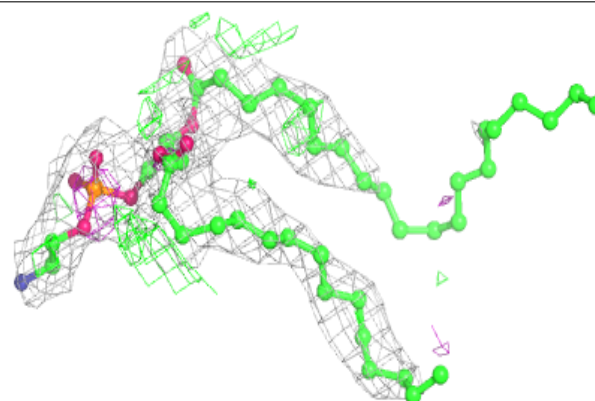
The following is a graphical depiction of the model fit to experimental electron density of all instances of the Ligand of Interest. In addition, ligands with molecular weight > 250 and outliers as shown on the geometry validation Tables will also be included. Each fit is shown from different orientation to approximate a three-dimensional view.

**Electron density around LMT B 1105:**

$2mF_o-DF_c$  (at 0.7 rmsd) in gray  
 $mF_o-DF_c$  (at 3 rmsd) in purple (negative)  
and green (positive)

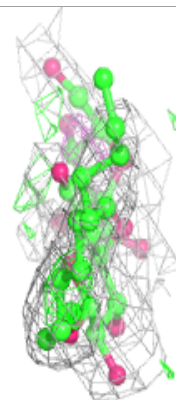
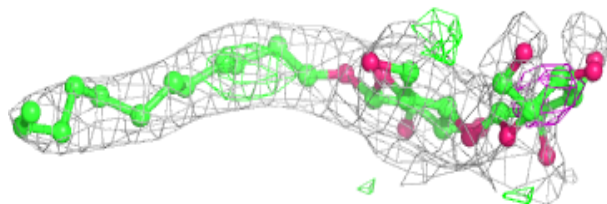
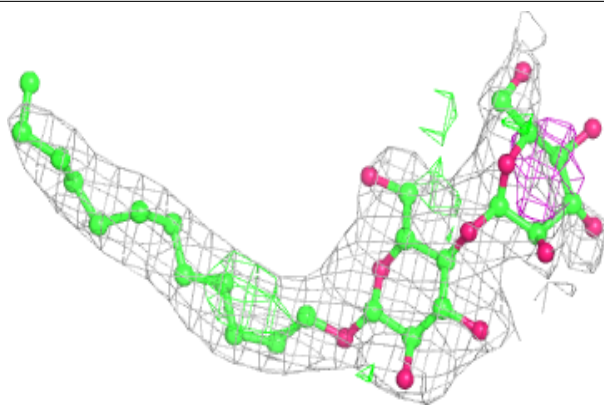
**Electron density around PTY C 1105:**

$2mF_o-DF_c$  (at 0.7 rmsd) in gray  
 $mF_o-DF_c$  (at 3 rmsd) in purple (negative)  
and green (positive)

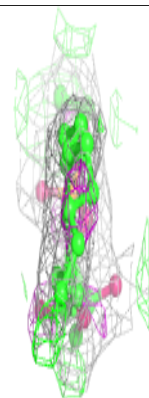
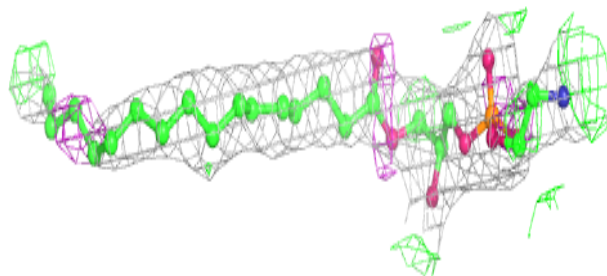
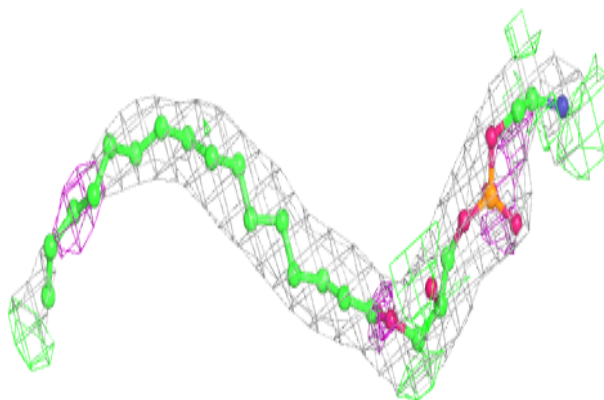


**Electron density around LMT A 1102:**

$2mF_o-DF_c$  (at 0.7 rmsd) in gray  
 $mF_o-DF_c$  (at 3 rmsd) in purple (negative)  
and green (positive)

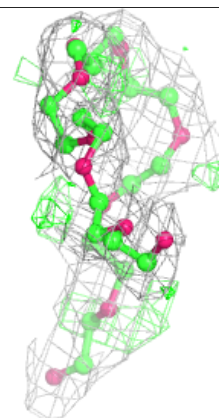
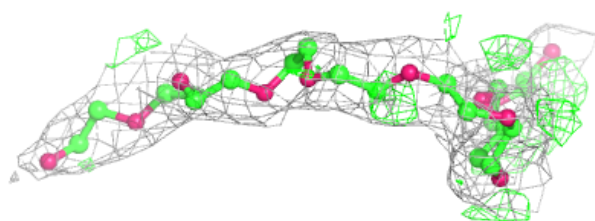
**Electron density around LPX C 1103:**

$2mF_o-DF_c$  (at 0.7 rmsd) in gray  
 $mF_o-DF_c$  (at 3 rmsd) in purple (negative)  
and green (positive)

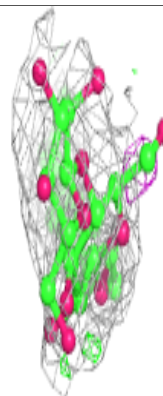
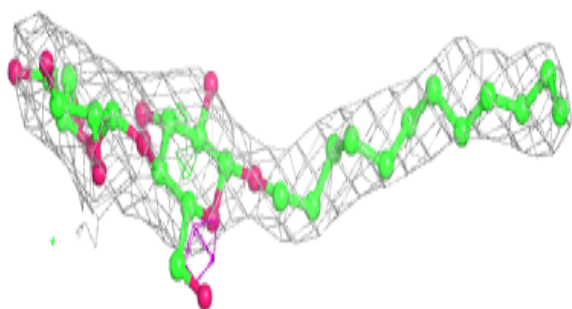
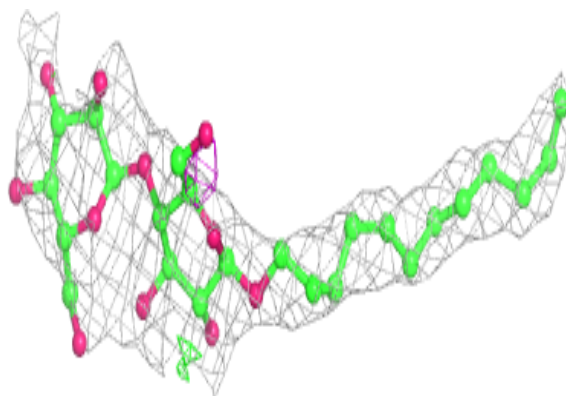


**Electron density around XPE A 1101:**

$2mF_o-DF_c$  (at 0.7 rmsd) in gray  
 $mF_o-DF_c$  (at 3 rmsd) in purple (negative)  
and green (positive)

**Electron density around LMT A 1104:**

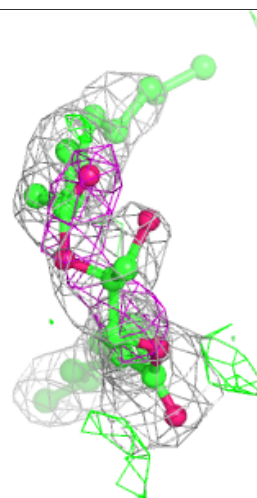
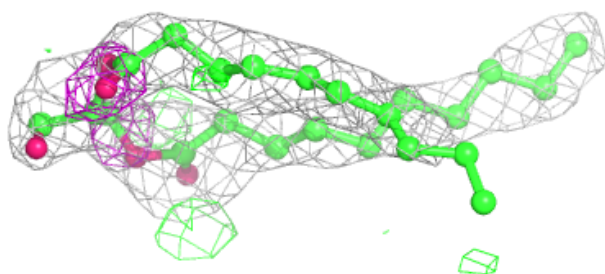
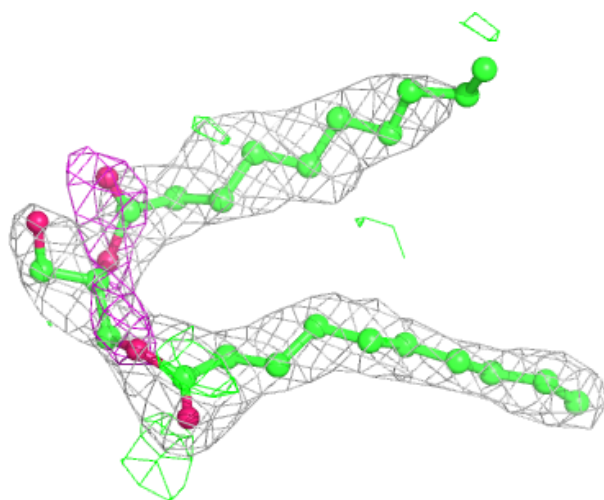
$2mF_o-DF_c$  (at 0.7 rmsd) in gray  
 $mF_o-DF_c$  (at 3 rmsd) in purple (negative)  
and green (positive)





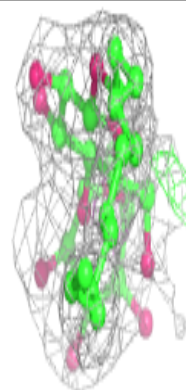
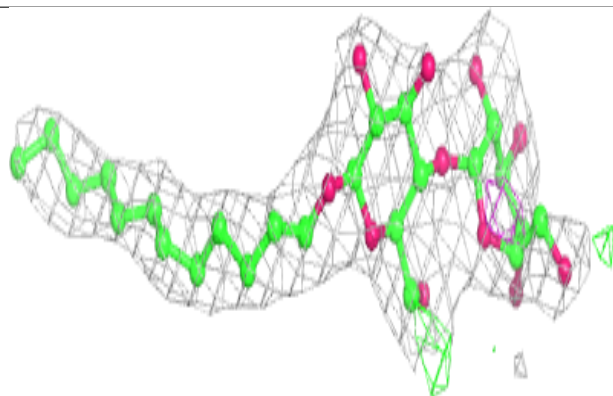
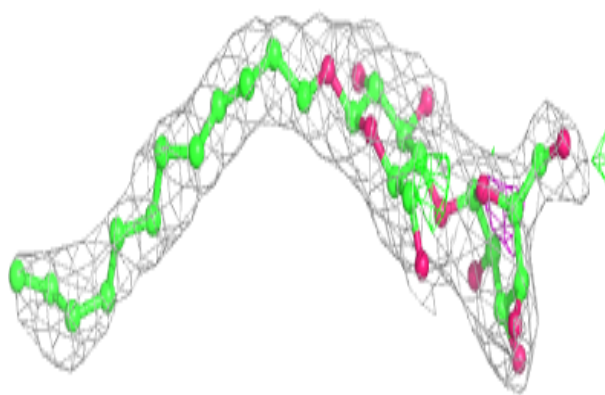
**Electron density around DDR B 1101:**

$2mF_o-DF_c$  (at 0.7 rmsd) in gray  
 $mF_o-DF_c$  (at 3 rmsd) in purple (negative)  
and green (positive)

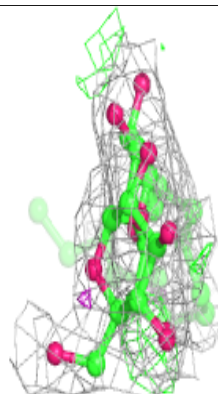
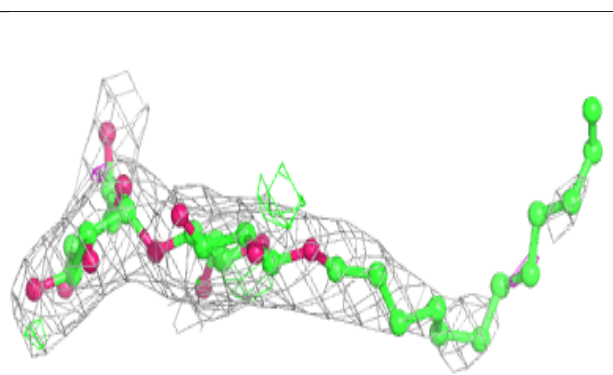
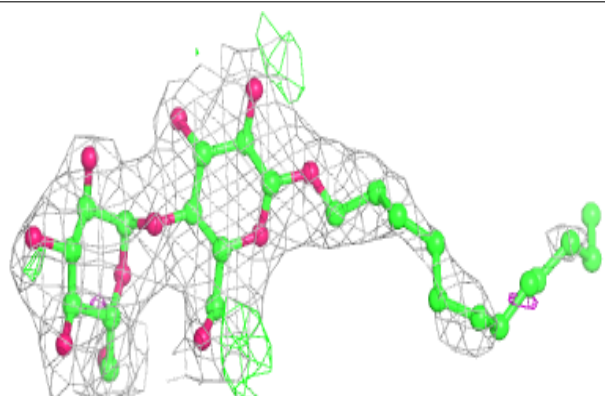


**Electron density around LMT A 1103:**

$2mF_o-DF_c$  (at 0.7 rmsd) in gray  
 $mF_o-DF_c$  (at 3 rmsd) in purple (negative)  
and green (positive)

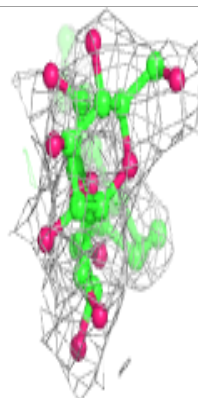
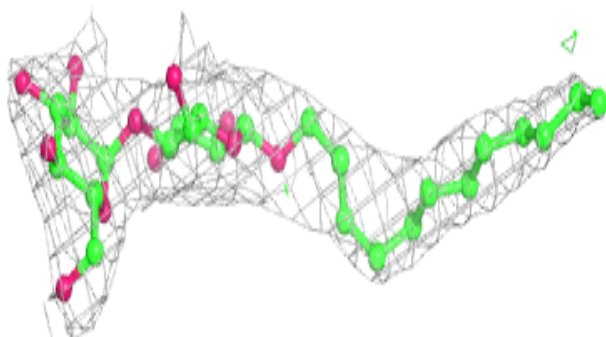
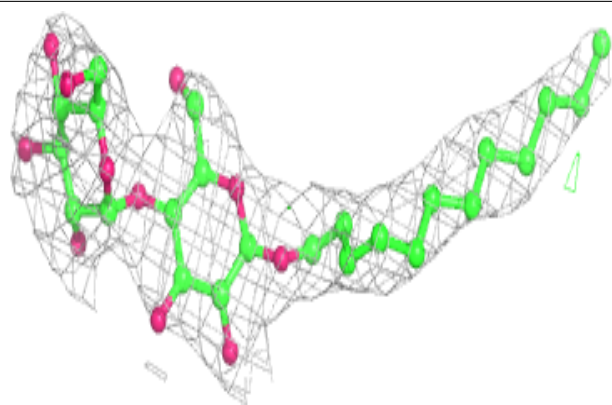
**Electron density around LMT B 1103:**

$2mF_o-DF_c$  (at 0.7 rmsd) in gray  
 $mF_o-DF_c$  (at 3 rmsd) in purple (negative)  
and green (positive)

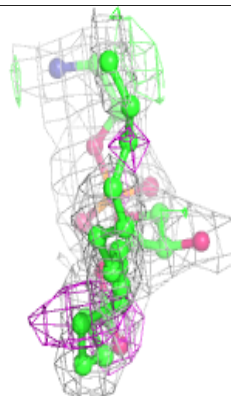
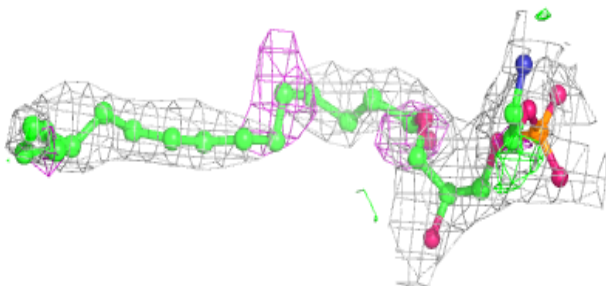
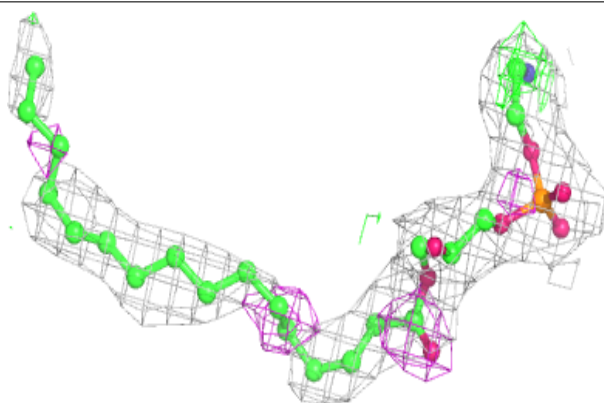


**Electron density around LMT B 1104:**

$2mF_o-DF_c$  (at 0.7 rmsd) in gray  
 $mF_o-DF_c$  (at 3 rmsd) in purple (negative)  
and green (positive)

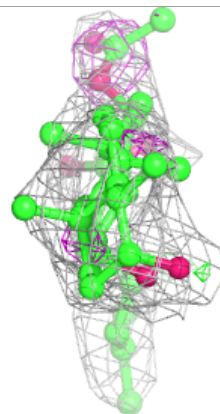
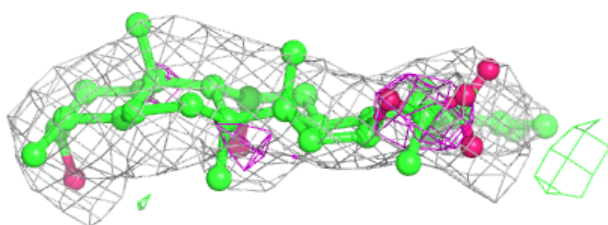
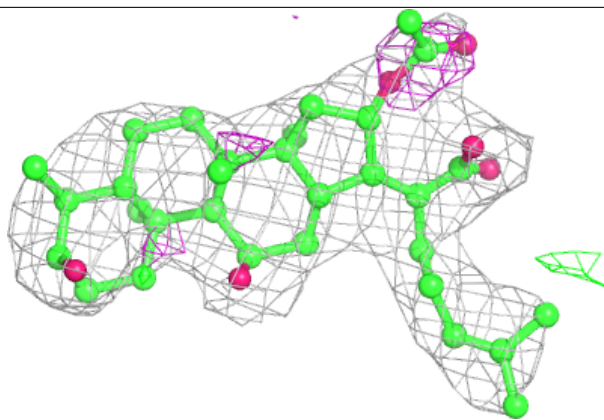
**Electron density around LPX C 1101:**

$2mF_o-DF_c$  (at 0.7 rmsd) in gray  
 $mF_o-DF_c$  (at 3 rmsd) in purple (negative)  
and green (positive)

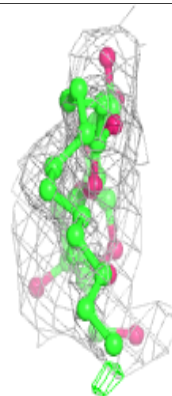
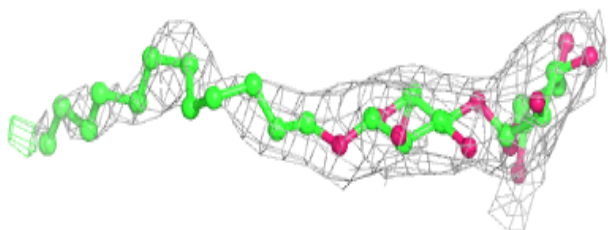
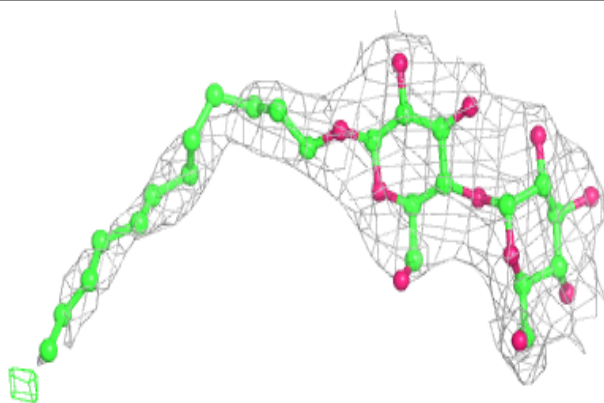


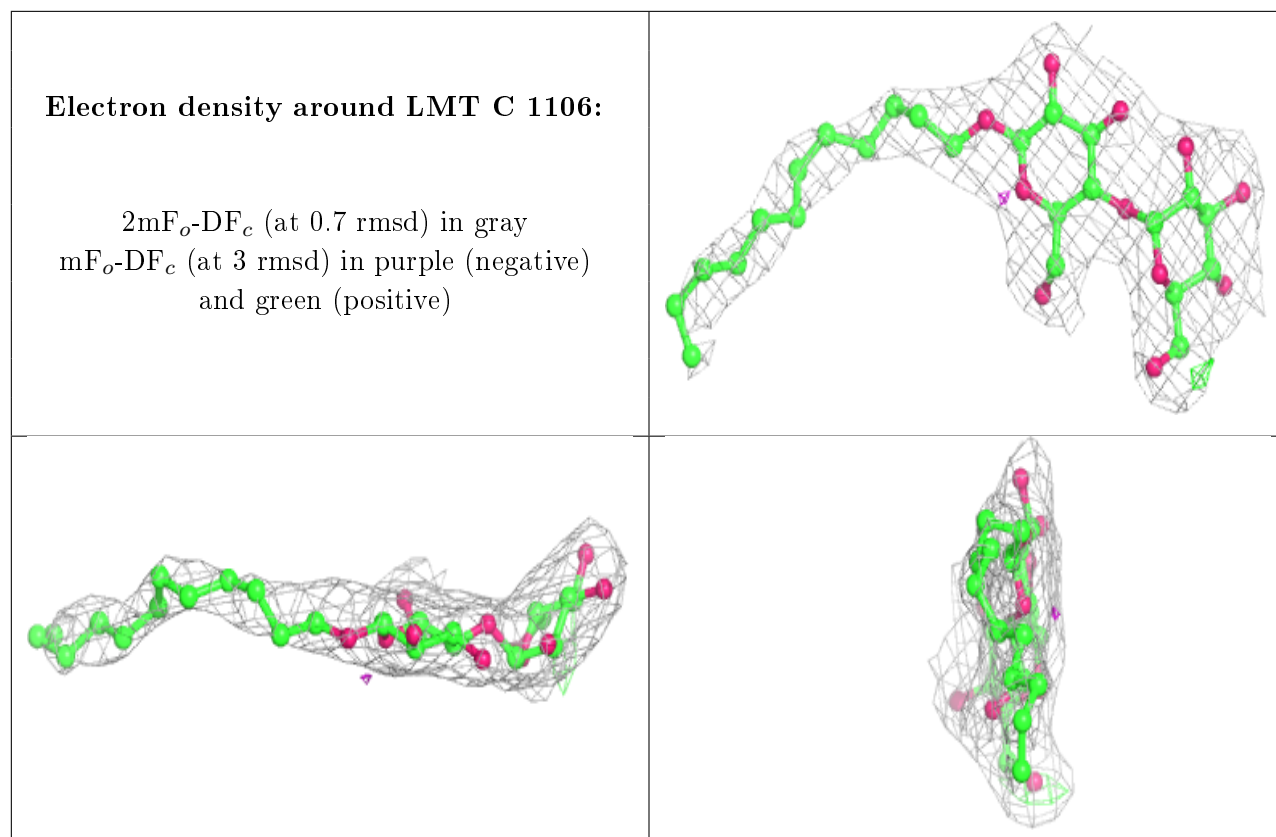
**Electron density around FUA B 1102:**

$2mF_o-DF_c$  (at 0.7 rmsd) in gray  
 $mF_o-DF_c$  (at 3 rmsd) in purple (negative)  
and green (positive)

**Electron density around LMT A 1105:**

$2mF_o-DF_c$  (at 0.7 rmsd) in gray  
 $mF_o-DF_c$  (at 3 rmsd) in purple (negative)  
and green (positive)





## 6.5 Other polymers [i](#)

There are no such residues in this entry.