



# Full wwPDB X-ray Structure Validation Report ⓘ

Dec 17, 2023 – 07:38 pm GMT

PDB ID : 3ZQ5  
Title : Structure of the Y263F mutant of the cyanobacterial phytochrome Cph1  
Authors : Mailliet, J.; Psakis, G.; Sineshchekov, V.; Essen, L.-O.; Hughes, J.  
Deposited on : 2011-06-07  
Resolution : 1.95 Å(reported)

This is a Full wwPDB X-ray Structure Validation Report for a publicly released PDB entry.

We welcome your comments at [validation@mail.wwpdb.org](mailto:validation@mail.wwpdb.org)

A user guide is available at

<https://www.wwpdb.org/validation/2017/XrayValidationReportHelp>

with specific help available everywhere you see the ⓘ symbol.

The types of validation reports are described at

<http://www.wwpdb.org/validation/2017/FAQs#types>.

---

The following versions of software and data (see [references ⓘ](#)) were used in the production of this report:

MolProbity : 4.02b-467  
Mogul : 1.8.4, CSD as541be (2020)  
Xtriage (Phenix) : 1.13  
EDS : 2.36  
buster-report : 1.1.7 (2018)  
Percentile statistics : 20191225.v01 (using entries in the PDB archive December 25th 2019)  
Refmac : 5.8.0158  
CCP4 : 7.0.044 (Gargrove)  
Ideal geometry (proteins) : Engh & Huber (2001)  
Ideal geometry (DNA, RNA) : Parkinson et al. (1996)  
Validation Pipeline (wwPDB-VP) : 2.36

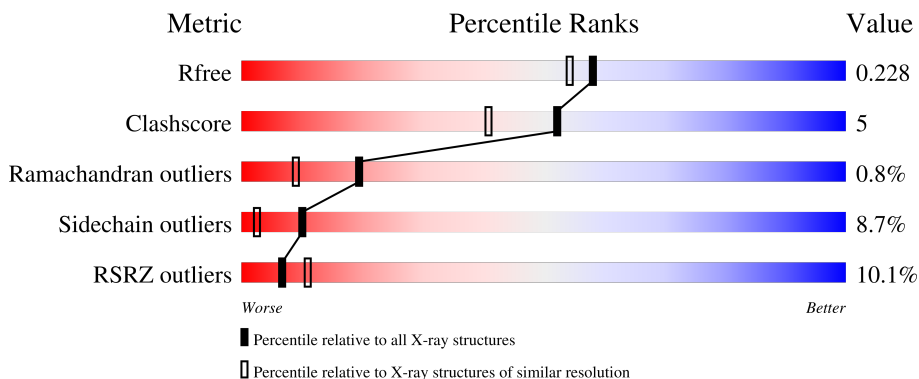
# 1 Overall quality at a glance

The following experimental techniques were used to determine the structure:

*X-RAY DIFFRACTION*

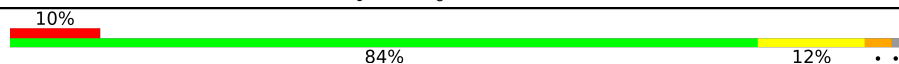
The reported resolution of this entry is 1.95 Å.

Percentile scores (ranging between 0-100) for global validation metrics of the entry are shown in the following graphic. The table shows the number of entries on which the scores are based.



Metric	Whole archive (#Entries)	Similar resolution (#Entries, resolution range(Å))
$R_{free}$	130704	2580 (1.96-1.96)
Clashscore	141614	2705 (1.96-1.96)
Ramachandran outliers	138981	2678 (1.96-1.96)
Sidechain outliers	138945	2678 (1.96-1.96)
RSRZ outliers	127900	2539 (1.96-1.96)

The table below summarises the geometric issues observed across the polymeric chains and their fit to the electron density. The red, orange, yellow and green segments of the lower bar indicate the fraction of residues that contain outliers for  $\geq 3$ , 2, 1 and 0 types of geometric quality criteria respectively. A grey segment represents the fraction of residues that are not modelled. The numeric value for each fraction is indicated below the corresponding segment, with a dot representing fractions  $\leq 5\%$ . The upper red bar (where present) indicates the fraction of residues that have poor fit to the electron density. The numeric value is given above the bar.

Mol	Chain	Length	Quality of chain
1	A	520	

## 2 Entry composition [i](#)

There are 7 unique types of molecules in this entry. The entry contains 4549 atoms, of which 0 are hydrogens and 0 are deuteriums.

In the tables below, the ZeroOcc column contains the number of atoms modelled with zero occupancy, the AltConf column contains the number of residues with at least one atom in alternate conformation and the Trace column contains the number of residues modelled with at most 2 atoms.

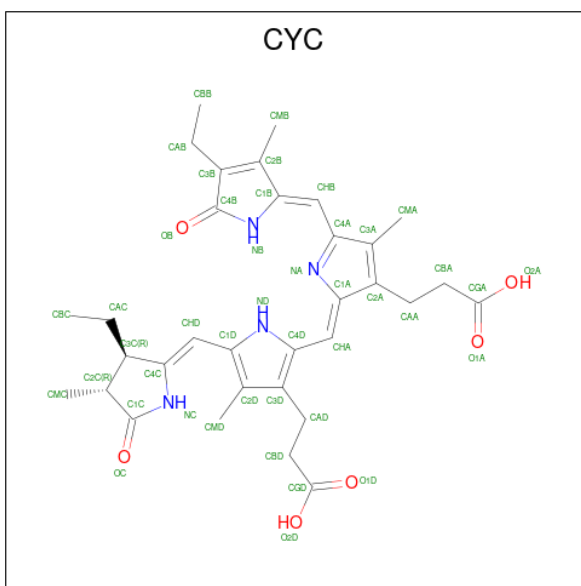
- Molecule 1 is a protein called PHYTOCHROME-LIKE PROTEIN CPH1.

Mol	Chain	Residues	Atoms					ZeroOcc	AltConf	Trace
			Total	C	N	O	S			
1	A	517	4143	2642	720	763	18	0	9	0

There are 7 discrepancies between the modelled and reference sequences:

Chain	Residue	Modelled	Actual	Comment	Reference
A	515	HIS	-	expression tag	UNP Q55168
A	516	HIS	-	expression tag	UNP Q55168
A	517	HIS	-	expression tag	UNP Q55168
A	518	HIS	-	expression tag	UNP Q55168
A	519	HIS	-	expression tag	UNP Q55168
A	520	HIS	-	expression tag	UNP Q55168
A	263	PHE	TYR	engineered mutation	UNP Q55168

- Molecule 2 is PHYCOCYANOBILIN (three-letter code: CYC) (formula:  $C_{33}H_{40}N_4O_6$ ).

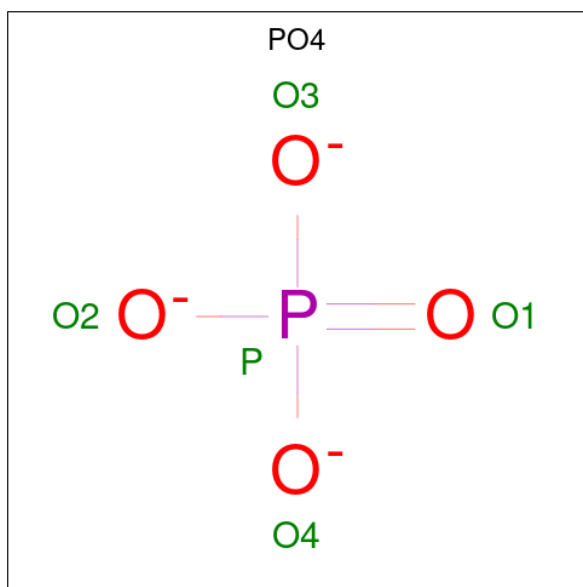


Mol	Chain	Residues	Atoms				ZeroOcc	AltConf
			Total	C	N	O		
2	A	1	43	33	4	6	0	0

- Molecule 3 is SODIUM ION (three-letter code: NA) (formula: Na).

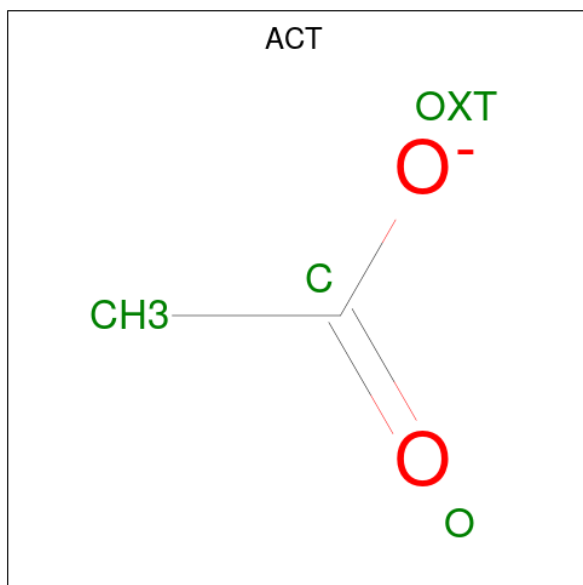
Mol	Chain	Residues	Atoms		ZeroOcc	AltConf
			Total	Na		
3	A	2	2	2	0	0

- Molecule 4 is PHOSPHATE ION (three-letter code: PO4) (formula: O<sub>4</sub>P).



Mol	Chain	Residues	Atoms			ZeroOcc	AltConf
			Total	O	P		
4	A	1	5	4	1	0	0

- Molecule 5 is ACETATE ION (three-letter code: ACT) (formula: C<sub>2</sub>H<sub>3</sub>O<sub>2</sub>).



Mol	Chain	Residues	Atoms	ZeroOcc	AltConf
5	A	1	Total C O 4 2 2	0	0
5	A	1	Total C O 4 2 2	0	0
5	A	1	Total C O 4 2 2	0	0
5	A	1	Total C O 4 2 2	0	0

- Molecule 6 is GLYCEROL (three-letter code: GOL) (formula:  $C_3H_8O_3$ ).



Mol	Chain	Residues	Atoms			ZeroOcc	AltConf
6	A	1	Total	C	O	0	0
			6	3	3		
6	A	1	Total	C	O	0	0
			6	3	3		

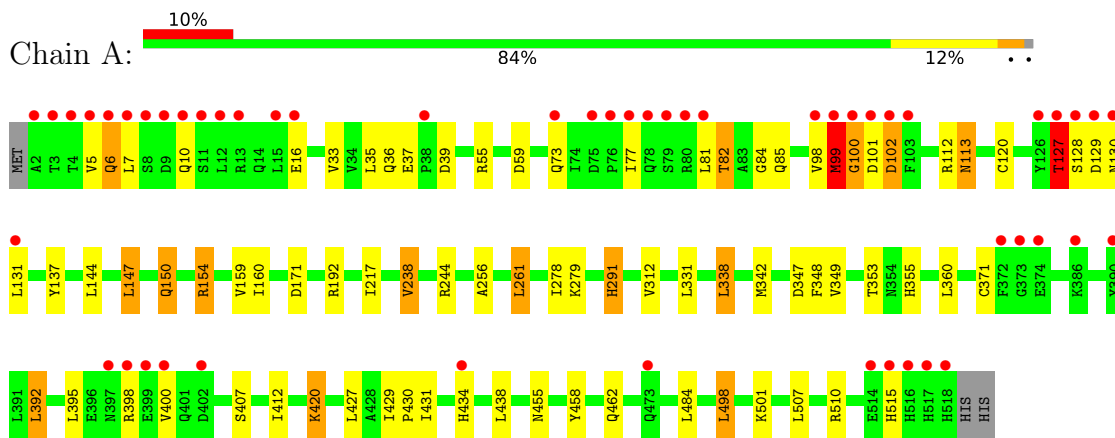
- Molecule 7 is water.

Mol	Chain	Residues	Atoms		ZeroOcc	AltConf
7	A	328	Total	O	0	0
			328	328		

### 3 Residue-property plots [i](#)

These plots are drawn for all protein, RNA, DNA and oligosaccharide chains in the entry. The first graphic for a chain summarises the proportions of the various outlier classes displayed in the second graphic. The second graphic shows the sequence view annotated by issues in geometry and electron density. Residues are color-coded according to the number of geometric quality criteria for which they contain at least one outlier: green = 0, yellow = 1, orange = 2 and red = 3 or more. A red dot above a residue indicates a poor fit to the electron density ( $RSRZ > 2$ ). Stretches of 2 or more consecutive residues without any outlier are shown as a green connector. Residues present in the sample, but not in the model, are shown in grey.

- Molecule 1: PHYTOCHROME-LIKE PROTEIN CPH1



## 4 Data and refinement statistics i

Property	Value	Source
Space group	C 1 2 1	Depositor
Cell constants a, b, c, $\alpha$ , $\beta$ , $\gamma$	107.57Å 95.15Å 73.58Å 90.00° 99.67° 90.00°	Depositor
Resolution (Å)	33.86 – 1.95 33.86 – 1.95	Depositor EDS
% Data completeness (in resolution range)	99.3 (33.86-1.95) 99.3 (33.86-1.95)	Depositor EDS
$R_{merge}$	0.08	Depositor
$R_{sym}$	(Not available)	Depositor
$\langle I/\sigma(I) \rangle$ <sup>1</sup>	1.58 (at 1.95Å)	Xtrriage
Refinement program	REFMAC 5.5.0109	Depositor
R, $R_{free}$	0.174 , 0.218 0.189 , 0.228	Depositor DCC
$R_{free}$ test set	2662 reflections (5.00%)	wwPDB-VP
Wilson B-factor (Å <sup>2</sup> )	32.3	Xtrriage
Anisotropy	0.066	Xtrriage
Bulk solvent $k_{sol}$ (e/Å <sup>3</sup> ), $B_{sol}$ (Å <sup>2</sup> )	0.38 , 54.0	EDS
L-test for twinning <sup>2</sup>	$\langle  L  \rangle = 0.48$ , $\langle L^2 \rangle = 0.31$	Xtrriage
Estimated twinning fraction	0.010 for $-1/2^*h+1/2^*k+1, 1/2^*h-1/2^*k+1, 1/2^*h+1/2^*k$ 0.018 for $-1/2^*h-1/2^*k+1, -1/2^*h-1/2^*k-1, 1/2^*h-1/2^*k$	Xtrriage
$F_o, F_c$ correlation	0.96	EDS
Total number of atoms	4549	wwPDB-VP
Average B, all atoms (Å <sup>2</sup> )	50.0	wwPDB-VP

Xtrriage's analysis on translational NCS is as follows: *The largest off-origin peak in the Patterson function is 6.37% of the height of the origin peak. No significant pseudotranslation is detected.*

<sup>1</sup>Intensities estimated from amplitudes.

<sup>2</sup>Theoretical values of  $\langle |L| \rangle$ ,  $\langle L^2 \rangle$  for acentric reflections are 0.5, 0.333 respectively for untwinned datasets, and 0.375, 0.2 for perfectly twinned datasets.



## 5 Model quality [i](#)

### 5.1 Standard geometry [i](#)

Bond lengths and bond angles in the following residue types are not validated in this section: GOL, NA, PO4, ACT, CYC

The Z score for a bond length (or angle) is the number of standard deviations the observed value is removed from the expected value. A bond length (or angle) with  $|Z| > 5$  is considered an outlier worth inspection. RMSZ is the root-mean-square of all Z scores of the bond lengths (or angles).

Mol	Chain	Bond lengths		Bond angles	
		RMSZ	# Z  >5	RMSZ	# Z  >5
1	A	0.44	0/4268	0.60	0/5806

There are no bond length outliers.

There are no bond angle outliers.

There are no chirality outliers.

There are no planarity outliers.

### 5.2 Too-close contacts [i](#)

In the following table, the Non-H and H(model) columns list the number of non-hydrogen atoms and hydrogen atoms in the chain respectively. The H(added) column lists the number of hydrogen atoms added and optimized by MolProbity. The Clashes column lists the number of clashes within the asymmetric unit, whereas Symm-Clashes lists symmetry-related clashes.

Mol	Chain	Non-H	H(model)	H(added)	Clashes	Symm-Clashes
1	A	4143	0	4099	43	0
2	A	43	0	36	3	0
3	A	2	0	0	0	0
4	A	5	0	0	0	0
5	A	16	0	12	0	0
6	A	12	0	16	0	0
7	A	328	0	0	6	0
All	All	4549	0	4163	46	0

The all-atom clashscore is defined as the number of clashes found per 1000 atoms (including hydrogen atoms). The all-atom clashscore for this structure is 5.

All (46) close contacts within the same asymmetric unit are listed below, sorted by their clash magnitude.

Atom-1	Atom-2	Interatomic distance (Å)	Clash overlap (Å)
1:A:455:ASN:ND2	7:A:2300:HOH:O	2.08	0.84
1:A:150:GLN:HE21	1:A:150:GLN:HA	1.47	0.77
1:A:77:ILE:HD11	1:A:81:LEU:HD12	1.67	0.76
1:A:33:VAL:HG23	1:A:120:CYS:HB3	1.73	0.71
1:A:131:LEU:HD11	7:A:2216:HOH:O	1.92	0.70
1:A:55:ARG:HD2	1:A:59:ASP:OD2	1.90	0.69
1:A:147:LEU:HD21	1:A:159:VAL:HG21	1.74	0.69
1:A:349:VAL:O	1:A:353:THR:HG23	1.93	0.69
1:A:82:THR:HG22	1:A:85:GLN:H	1.59	0.67
1:A:147:LEU:CD2	1:A:159:VAL:HG21	2.25	0.67
2:A:1521:CYC:NB	2:A:1521:CYC:HMA1	2.13	0.64
1:A:36:GLN:NE2	7:A:2021:HOH:O	2.29	0.64
1:A:217:ILE:HD13	1:A:278:ILE:HD12	1.80	0.63
1:A:400:VAL:HG13	1:A:430:PRO:HG2	1.83	0.60
1:A:98:VAL:O	1:A:100:GLY:N	2.36	0.59
1:A:147:LEU:HD21	1:A:159:VAL:CG2	2.34	0.57
1:A:429:ILE:HD13	1:A:498:LEU:HD13	1.87	0.56
1:A:160:ILE:HG13	1:A:312:VAL:HG11	1.87	0.55
2:A:1521:CYC:HMA1	2:A:1521:CYC:HB	1.73	0.54
1:A:342:MET:CG	1:A:348:PHE:HB2	2.39	0.53
1:A:342:MET:HG2	1:A:348:PHE:HB2	1.90	0.52
1:A:98:VAL:HG23	1:A:99:MET:HG3	1.90	0.52
1:A:98:VAL:HG22	1:A:102:ASP:HB3	1.92	0.52
1:A:279:LYS:NZ	7:A:2206:HOH:O	2.43	0.52
1:A:113:ASN:C	1:A:113:ASN:HD22	2.14	0.51
1:A:429:ILE:CG2	1:A:501:LYS:HD2	2.41	0.50
1:A:154:ARG:NH2	7:A:2103:HOH:O	2.44	0.49
1:A:127:THR:OG1	1:A:128:SER:N	2.46	0.48
1:A:5:VAL:HG21	1:A:462:GLN:HB2	1.96	0.47
1:A:430:PRO:O	1:A:431:ILE:HD13	2.15	0.47
1:A:400:VAL:HG13	1:A:430:PRO:CG	2.45	0.46
1:A:420:LYS:HG3	1:A:484:LEU:CD2	2.45	0.46
1:A:238:VAL:HG22	1:A:244:ARG:CA	2.46	0.45
1:A:6:GLN:HE21	1:A:6:GLN:HA	1.82	0.45
1:A:355:HIS:HD2	7:A:2325:HOH:O	2.00	0.44
1:A:82:THR:HG22	1:A:85:GLN:HG3	2.01	0.43
1:A:82:THR:HG23	1:A:84:GLY:H	1.83	0.43
1:A:7:LEU:HD11	1:A:458:TYR:O	2.18	0.43
1:A:150:GLN:HA	1:A:150:GLN:NE2	2.24	0.43
1:A:37:GLU:OE2	1:A:112:ARG:NH2	2.52	0.42
1:A:171:ASP:H	1:A:291:HIS:HD2	1.67	0.42
1:A:338:LEU:O	1:A:342:MET:HB2	2.19	0.42

*Continued on next page...*

Continued from previous page...

Atom-1	Atom-2	Interatomic distance (Å)	Clash overlap (Å)
1:A:371[B]:CYS:SG	1:A:392:LEU:HD21	2.60	0.41
2:A:1521:CYC:HAD2	2:A:1521:CYC:HHA	1.71	0.41
1:A:256:ALA:HB3	1:A:261:LEU:HD13	2.02	0.41
1:A:98:VAL:HG23	1:A:99:MET:CG	2.51	0.41

There are no symmetry-related clashes.

## 5.3 Torsion angles [i](#)

### 5.3.1 Protein backbone [i](#)

In the following table, the Percentiles column shows the percent Ramachandran outliers of the chain as a percentile score with respect to all X-ray entries followed by that with respect to entries of similar resolution.

The Analysed column shows the number of residues for which the backbone conformation was analysed, and the total number of residues.

Mol	Chain	Analysed	Favoured	Allowed	Outliers	Percentiles
1	A	524/520 (101%)	511 (98%)	9 (2%)	4 (1%)	19 9

All (4) Ramachandran outliers are listed below:

Mol	Chain	Res	Type
1	A	99	MET
1	A	127	THR
1	A	130	ASN
1	A	100	GLY

### 5.3.2 Protein sidechains [i](#)

In the following table, the Percentiles column shows the percent sidechain outliers of the chain as a percentile score with respect to all X-ray entries followed by that with respect to entries of similar resolution.

The Analysed column shows the number of residues for which the sidechain conformation was analysed, and the total number of residues.

Mol	Chain	Analysed	Rotameric	Outliers	Percentiles
1	A	456/453 (101%)	416 (91%)	40 (9%)	10 2

All (40) residues with a non-rotameric sidechain are listed below:

Mol	Chain	Res	Type
1	A	6	GLN
1	A	10	GLN
1	A	16	GLU
1	A	35	LEU
1	A	39	ASP
1	A	73[A]	GLN
1	A	73[B]	GLN
1	A	82	THR
1	A	99	MET
1	A	101	ASP
1	A	102	ASP
1	A	113	ASN
1	A	127	THR
1	A	129	ASP
1	A	137	TYR
1	A	144	LEU
1	A	147	LEU
1	A	150	GLN
1	A	154	ARG
1	A	192	ARG
1	A	238	VAL
1	A	261	LEU
1	A	291	HIS
1	A	331	LEU
1	A	338	LEU
1	A	347	ASP
1	A	360	LEU
1	A	392	LEU
1	A	395	LEU
1	A	398	ARG
1	A	407	SER
1	A	412	ILE
1	A	420	LYS
1	A	427	LEU
1	A	434	HIS
1	A	438	LEU
1	A	498	LEU
1	A	507	LEU
1	A	510	ARG
1	A	515	HIS

Sometimes sidechains can be flipped to improve hydrogen bonding and reduce clashes. All (9) such

sidechains are listed below:

Mol	Chain	Res	Type
1	A	6	GLN
1	A	113	ASN
1	A	150	GLN
1	A	258	HIS
1	A	291	HIS
1	A	355	HIS
1	A	389	GLN
1	A	397	ASN
1	A	411	GLN

### 5.3.3 RNA [i](#)

There are no RNA molecules in this entry.

### 5.4 Non-standard residues in protein, DNA, RNA chains [i](#)

There are no non-standard protein/DNA/RNA residues in this entry.

### 5.5 Carbohydrates [i](#)

There are no monosaccharides in this entry.

### 5.6 Ligand geometry [i](#)

Of 10 ligands modelled in this entry, 2 are monoatomic - leaving 8 for Mogul analysis.

In the following table, the Counts columns list the number of bonds (or angles) for which Mogul statistics could be retrieved, the number of bonds (or angles) that are observed in the model and the number of bonds (or angles) that are defined in the Chemical Component Dictionary. The Link column lists molecule types, if any, to which the group is linked. The Z score for a bond length (or angle) is the number of standard deviations the observed value is removed from the expected value. A bond length (or angle) with  $|Z| > 2$  is considered an outlier worth inspection. RMSZ is the root-mean-square of all Z scores of the bond lengths (or angles).

Mol	Type	Chain	Res	Link	Bond lengths			Bond angles		
					Counts	RMSZ	$\# Z  > 2$	Counts	RMSZ	$\# Z  > 2$
5	ACT	A	1526	-	3,3,3	0.72	0	3,3,3	1.34	0
6	GOL	A	1528	-	5,5,5	0.44	0	5,5,5	0.89	0
5	ACT	A	1524	-	3,3,3	0.84	0	3,3,3	1.21	0
5	ACT	A	1527	-	3,3,3	0.66	0	3,3,3	1.18	0

Mol	Type	Chain	Res	Link	Bond lengths			Bond angles		
					Counts	RMSZ	# Z  > 2	Counts	RMSZ	# Z  > 2
2	CYC	A	1521	1	42,46,46	3.68	16 (38%)	50,67,67	3.18	19 (38%)
6	GOL	A	1529	-	5,5,5	0.36	0	5,5,5	0.33	0
5	ACT	A	1525	-	3,3,3	0.78	0	3,3,3	1.25	0
4	PO4	A	1523	-	4,4,4	0.90	0	6,6,6	0.67	0

In the following table, the Chirals column lists the number of chiral outliers, the number of chiral centers analysed, the number of these observed in the model and the number defined in the Chemical Component Dictionary. Similar counts are reported in the Torsion and Rings columns. '-' means no outliers of that kind were identified.

Mol	Type	Chain	Res	Link	Chirals	Torsions	Rings
6	GOL	A	1529	-	-	2/4/4/4	-
2	CYC	A	1521	1	-	7/25/74/74	0/4/4/4
6	GOL	A	1528	-	-	4/4/4/4	-

All (16) bond length outliers are listed below:

Mol	Chain	Res	Type	Atoms	Z	Observed(Å)	Ideal(Å)
2	A	1521	CYC	CHA-C1A	13.47	1.46	1.35
2	A	1521	CYC	OB-C4B	12.26	1.46	1.23
2	A	1521	CYC	C1C-NC	-7.46	1.27	1.37
2	A	1521	CYC	OC-C1C	5.22	1.33	1.23
2	A	1521	CYC	C2A-C3A	4.55	1.46	1.36
2	A	1521	CYC	C4B-C3B	-4.47	1.39	1.48
2	A	1521	CYC	CHB-C1B	4.30	1.48	1.38
2	A	1521	CYC	CAD-CBD	-3.87	1.33	1.52
2	A	1521	CYC	C3D-C2D	3.36	1.47	1.37
2	A	1521	CYC	C1B-C2B	-3.11	1.39	1.45
2	A	1521	CYC	CHB-C4A	2.84	1.47	1.40
2	A	1521	CYC	CAD-C3D	-2.59	1.48	1.52
2	A	1521	CYC	C2C-C1C	-2.44	1.49	1.52
2	A	1521	CYC	C1A-NA	-2.31	1.33	1.38
2	A	1521	CYC	C4A-C3A	-2.22	1.41	1.45
2	A	1521	CYC	C1D-CHD	2.01	1.48	1.41

All (19) bond angle outliers are listed below:

Mol	Chain	Res	Type	Atoms	Z	Observed(°)	Ideal(°)
2	A	1521	CYC	C3B-C4B-NB	12.44	116.83	106.78
2	A	1521	CYC	C1B-NB-C4B	-7.46	101.17	110.67
2	A	1521	CYC	OB-C4B-C3B	-6.86	120.60	128.04

*Continued on next page...*

Continued from previous page...

Mol	Chain	Res	Type	Atoms	Z	Observed(°)	Ideal(°)
2	A	1521	CYC	OC-C1C-C2C	-5.09	122.12	126.17
2	A	1521	CYC	CHB-C4A-NA	-5.02	114.42	124.93
2	A	1521	CYC	CAB-C3B-C4B	4.70	128.80	121.38
2	A	1521	CYC	CMA-C3A-C4A	4.53	132.05	125.06
2	A	1521	CYC	CAD-CBD-CGD	4.16	125.42	113.76
2	A	1521	CYC	C2C-C1C-NC	4.06	111.77	108.27
2	A	1521	CYC	C2B-C1B-NB	3.69	112.39	106.99
2	A	1521	CYC	C1A-C2A-C3A	-3.53	102.88	106.78
2	A	1521	CYC	CMD-C2D-C3D	3.51	131.56	124.94
2	A	1521	CYC	C2A-C1A-NA	3.06	114.50	110.05
2	A	1521	CYC	CHD-C4C-NC	2.72	128.44	125.20
2	A	1521	CYC	C4A-C3A-C2A	-2.71	103.40	106.51
2	A	1521	CYC	C3A-C4A-NA	2.63	116.14	110.53
2	A	1521	CYC	CHA-C1A-C2A	-2.38	119.81	125.32
2	A	1521	CYC	CHA-C1A-NA	-2.27	125.67	128.83
2	A	1521	CYC	CAD-C3D-C2D	2.26	133.73	127.25

There are no chirality outliers.

All (13) torsion outliers are listed below:

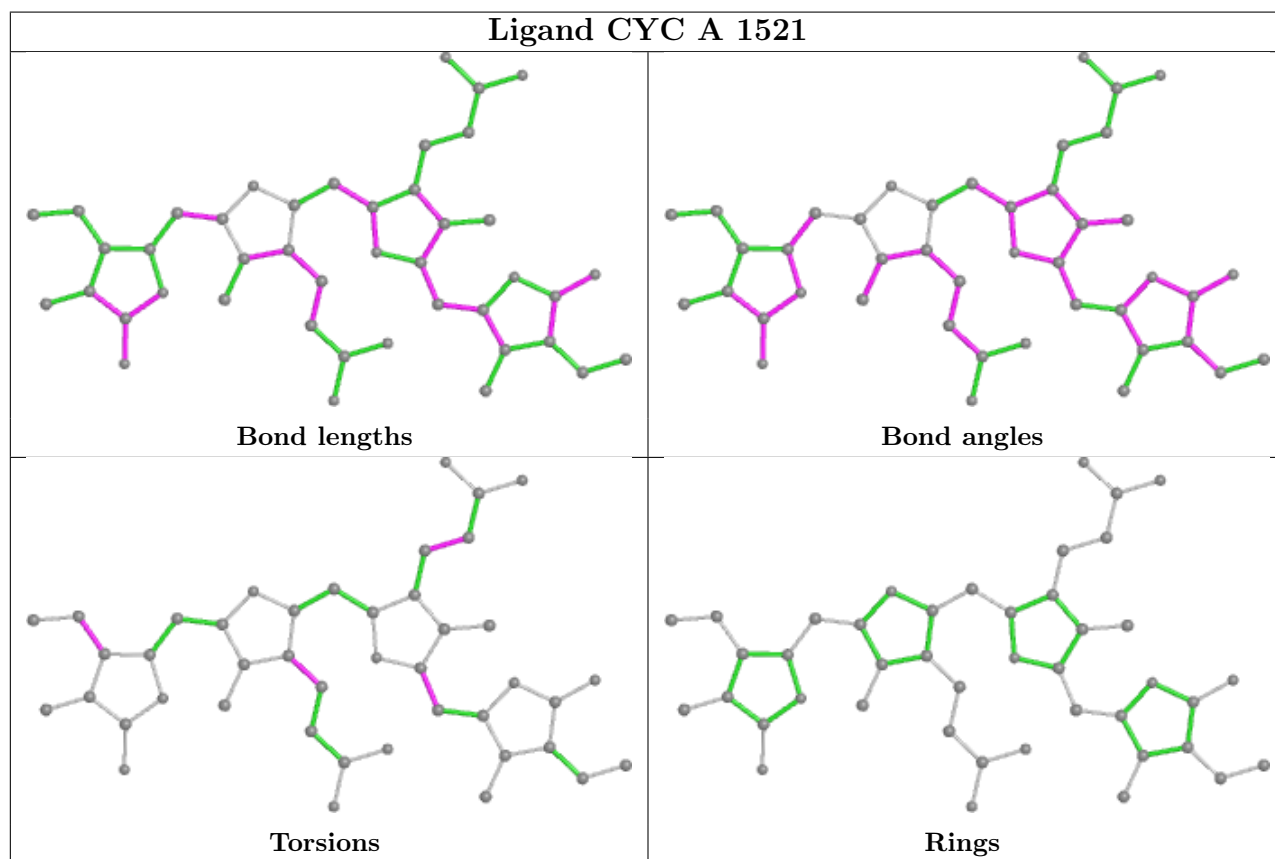
Mol	Chain	Res	Type	Atoms
2	A	1521	CYC	NA-C4A-CHB-C1B
2	A	1521	CYC	C3A-C4A-CHB-C1B
2	A	1521	CYC	C2C-C3C-CAC-CBC
2	A	1521	CYC	C4C-C3C-CAC-CBC
2	A	1521	CYC	C2D-C3D-CAD-CBD
2	A	1521	CYC	C4D-C3D-CAD-CBD
6	A	1528	GOL	O1-C1-C2-C3
6	A	1529	GOL	C1-C2-C3-O3
6	A	1528	GOL	C1-C2-C3-O3
6	A	1528	GOL	O1-C1-C2-O2
6	A	1528	GOL	O2-C2-C3-O3
6	A	1529	GOL	O2-C2-C3-O3
2	A	1521	CYC	C2A-CAA-CBA-CGA

There are no ring outliers.

1 monomer is involved in 3 short contacts:

Mol	Chain	Res	Type	Clashes	Symm-Clashes
2	A	1521	CYC	3	0

The following is a two-dimensional graphical depiction of Mogul quality analysis of bond lengths, bond angles, torsion angles, and ring geometry for all instances of the Ligand of Interest. In addition, ligands with molecular weight > 250 and outliers as shown on the validation Tables will also be included. For torsion angles, if less than 5% of the Mogul distribution of torsion angles is within 10 degrees of the torsion angle in question, then that torsion angle is considered an outlier. Any bond that is central to one or more torsion angles identified as an outlier by Mogul will be highlighted in the graph. For rings, the root-mean-square deviation (RMSD) between the ring in question and similar rings identified by Mogul is calculated over all ring torsion angles. If the average RMSD is greater than 60 degrees and the minimal RMSD between the ring in question and any Mogul-identified rings is also greater than 60 degrees, then that ring is considered an outlier. The outliers are highlighted in purple. The color gray indicates Mogul did not find sufficient equivalents in the CSD to analyse the geometry.



## 5.7 Other polymers [\(i\)](#)

There are no such residues in this entry.

## 5.8 Polymer linkage issues [\(i\)](#)

There are no chain breaks in this entry.



## 6 Fit of model and data

### 6.1 Protein, DNA and RNA chains

In the following table, the column labelled ‘#RSRZ> 2’ contains the number (and percentage) of RSRZ outliers, followed by percent RSRZ outliers for the chain as percentile scores relative to all X-ray entries and entries of similar resolution. The OWAB column contains the minimum, median, 95<sup>th</sup> percentile and maximum values of the occupancy-weighted average B-factor per residue. The column labelled ‘Q< 0.9’ lists the number of (and percentage) of residues with an average occupancy less than 0.9.

Mol	Chain	Analysed	<RSRZ>	#RSRZ>2	OWAB(Å <sup>2</sup> )	Q<0.9
1	A	517/520 (99%)	0.53	52 (10%) <b>7</b> <b>11</b>	27, 44, 93, 124	0

All (52) RSRZ outliers are listed below:

Mol	Chain	Res	Type	RSRZ
1	A	2	ALA	9.6
1	A	7	LEU	8.7
1	A	518	HIS	8.4
1	A	515	HIS	8.3
1	A	3	THR	7.7
1	A	5	VAL	7.4
1	A	101	ASP	7.2
1	A	99	MET	7.1
1	A	516	HIS	7.1
1	A	79	SER	7.0
1	A	4	THR	6.7
1	A	517	HIS	6.5
1	A	76	PRO	6.2
1	A	398	ARG	5.5
1	A	128	SER	5.4
1	A	78	GLN	5.2
1	A	126	TYR	4.9
1	A	127	THR	4.9
1	A	77	ILE	4.8
1	A	514	GLU	4.7
1	A	12	LEU	4.5
1	A	131	LEU	4.5
1	A	10	GLN	4.3
1	A	9	ASP	4.1
1	A	8	SER	4.0
1	A	400	VAL	3.8
1	A	100	GLY	3.7

*Continued on next page...*

*Continued from previous page...*

Mol	Chain	Res	Type	RSRZ
1	A	374	GLU	3.6
1	A	6	GLN	3.5
1	A	129	ASP	3.3
1	A	98	VAL	3.2
1	A	399	GLU	3.2
1	A	80	ARG	3.2
1	A	130	ASN	3.2
1	A	81	LEU	3.1
1	A	102	ASP	3.1
1	A	13	ARG	3.1
1	A	75	ASP	2.8
1	A	434	HIS	2.8
1	A	103	PHE	2.8
1	A	386	LYS	2.7
1	A	373	GLY	2.7
1	A	397	ASN	2.7
1	A	402	ASP	2.6
1	A	372	PHE	2.5
1	A	16	GLU	2.4
1	A	38	PRO	2.4
1	A	11	SER	2.4
1	A	15	LEU	2.3
1	A	473	GLN	2.2
1	A	390	TYR	2.2
1	A	73[A]	GLN	2.0

## 6.2 Non-standard residues in protein, DNA, RNA chains [i](#)

There are no non-standard protein/DNA/RNA residues in this entry.

## 6.3 Carbohydrates [i](#)

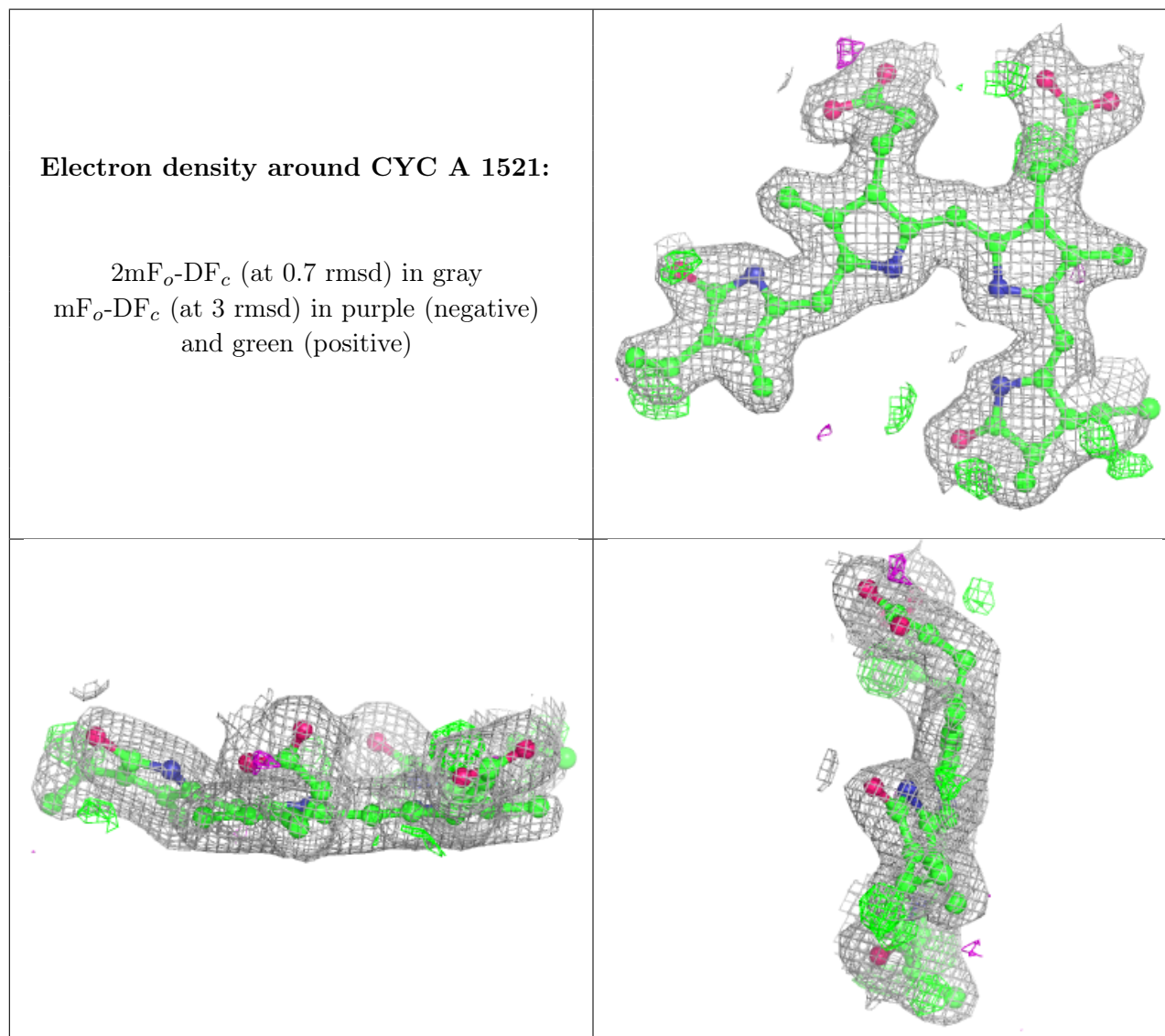
There are no monosaccharides in this entry.

## 6.4 Ligands [i](#)

In the following table, the Atoms column lists the number of modelled atoms in the group and the number defined in the chemical component dictionary. The B-factors column lists the minimum, median, 95<sup>th</sup> percentile and maximum values of B factors of atoms in the group. The column labelled 'Q < 0.9' lists the number of atoms with occupancy less than 0.9.

Mol	Type	Chain	Res	Atoms	RSCC	RSR	B-factors( $\text{\AA}^2$ )	Q<0.9
6	GOL	A	1528	6/6	0.58	0.21	52,60,62,62	0
5	ACT	A	1527	4/4	0.78	0.19	62,65,65,66	0
5	ACT	A	1526	4/4	0.80	0.19	63,64,64,65	0
6	GOL	A	1529	6/6	0.80	0.21	69,77,79,80	0
3	NA	A	1522	1/1	0.83	0.19	58,58,58,58	0
5	ACT	A	1525	4/4	0.83	0.26	68,69,70,71	0
3	NA	A	1530	1/1	0.91	0.17	77,77,77,77	0
5	ACT	A	1524	4/4	0.95	0.09	48,49,50,51	0
2	CYC	A	1521	43/43	0.95	0.14	28,38,45,56	0
4	PO4	A	1523	5/5	0.95	0.13	52,54,58,61	5

The following is a graphical depiction of the model fit to experimental electron density of all instances of the Ligand of Interest. In addition, ligands with molecular weight > 250 and outliers as shown on the geometry validation Tables will also be included. Each fit is shown from different orientation to approximate a three-dimensional view.



## 6.5 Other polymers [i](#)

There are no such residues in this entry.