



Full wwPDB X-ray Structure Validation Report ⓘ

May 25, 2020 – 09:01 am BST

PDB ID : 5ZQ4
Title : PDE-Ubi-ADPr
Authors : Wang, Y.; Gao, A.; Gao, P.
Deposited on : 2018-04-17
Resolution : 2.22 Å(reported)

This is a Full wwPDB X-ray Structure Validation Report for a publicly released PDB entry.

We welcome your comments at validation@mail.wwpdb.org

A user guide is available at

<https://www.wwpdb.org/validation/2017/XrayValidationReportHelp>

with specific help available everywhere you see the ⓘ symbol.

The following versions of software and data (see [references ⓘ](#)) were used in the production of this report:

MolProbity : 4.02b-467
Mogul : 1.8.5 (274361), CSD as541be (2020)
Xtriage (Phenix) : 1.13
EDS : 2.11
buster-report : 1.1.7 (2018)
Percentile statistics : 20191225.v01 (using entries in the PDB archive December 25th 2019)
Refmac : 5.8.0158
CCP4 : 7.0.044 (Gargrove)
Ideal geometry (proteins) : Engh & Huber (2001)
Ideal geometry (DNA, RNA) : Parkinson et al. (1996)
Validation Pipeline (wwPDB-VP) : 2.11

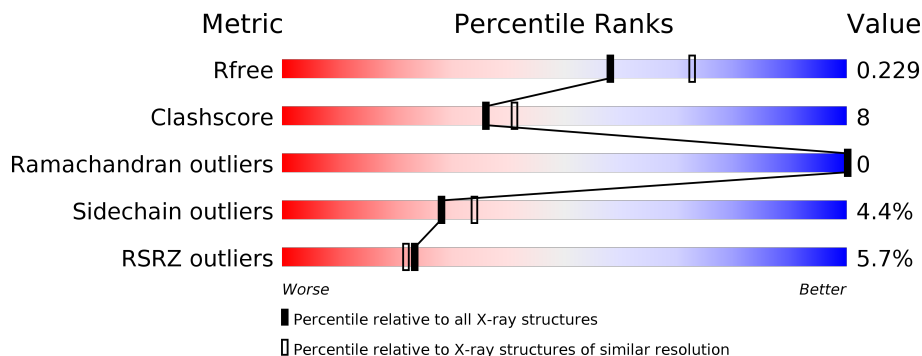
1 Overall quality at a glance i

The following experimental techniques were used to determine the structure:

X-RAY DIFFRACTION

The reported resolution of this entry is 2.22 Å.

Percentile scores (ranging between 0-100) for global validation metrics of the entry are shown in the following graphic. The table shows the number of entries on which the scores are based.



Metric	Whole archive (#Entries)	Similar resolution (#Entries, resolution range(Å))
R_{free}	130704	5912 (2.24-2.20)
Clashscore	141614	6646 (2.24-2.20)
Ramachandran outliers	138981	6543 (2.24-2.20)
Sidechain outliers	138945	6544 (2.24-2.20)
RSRZ outliers	127900	5797 (2.24-2.20)

The table below summarises the geometric issues observed across the polymeric chains and their fit to the electron density. The red, orange, yellow and green segments on the lower bar indicate the fraction of residues that contain outliers for ≥ 3 , 2, 1 and 0 types of geometric quality criteria respectively. A grey segment represents the fraction of residues that are not modelled. The numeric value for each fraction is indicated below the corresponding segment, with a dot representing fractions $\leq 5\%$. The upper red bar (where present) indicates the fraction of residues that have poor fit to the electron density. The numeric value is given above the bar.

Mol	Chain	Length	Quality of chain
1	A	377	<div style="display: flex; align-items: center;"> <div style="width: 6%; height: 10px; background-color: red; margin-right: 5px;"></div> <div style="width: 78%; height: 10px; background-color: green; margin-right: 5px;"></div> <div style="width: 12%; height: 10px; background-color: yellow; margin-right: 5px;"></div> <div style="width: 8%; height: 10px; background-color: orange; margin-right: 5px;"></div> <div style="width: 12%; height: 10px; background-color: grey; margin-right: 5px;"></div> </div> <p style="text-align: center;">6% 78% 12% • 8%</p>
1	B	377	<div style="display: flex; align-items: center;"> <div style="width: 5%; height: 10px; background-color: red; margin-right: 5px;"></div> <div style="width: 80%; height: 10px; background-color: green; margin-right: 5px;"></div> <div style="width: 12%; height: 10px; background-color: yellow; margin-right: 5px;"></div> <div style="width: 8%; height: 10px; background-color: orange; margin-right: 5px;"></div> <div style="width: 12%; height: 10px; background-color: grey; margin-right: 5px;"></div> </div> <p style="text-align: center;">5% 80% 12% • 8%</p>
2	C	78	<div style="display: flex; align-items: center;"> <div style="width: 6%; height: 10px; background-color: red; margin-right: 5px;"></div> <div style="width: 79%; height: 10px; background-color: green; margin-right: 5px;"></div> <div style="width: 13%; height: 10px; background-color: yellow; margin-right: 5px;"></div> <div style="width: 6%; height: 10px; background-color: orange; margin-right: 5px;"></div> <div style="width: 12%; height: 10px; background-color: grey; margin-right: 5px;"></div> </div> <p style="text-align: center;">6% 79% 13% • 6%</p>
2	D	78	<div style="display: flex; align-items: center;"> <div style="width: 4%; height: 10px; background-color: red; margin-right: 5px;"></div> <div style="width: 73%; height: 10px; background-color: green; margin-right: 5px;"></div> <div style="width: 18%; height: 10px; background-color: yellow; margin-right: 5px;"></div> <div style="width: 5%; height: 10px; background-color: orange; margin-right: 5px;"></div> <div style="width: 12%; height: 10px; background-color: grey; margin-right: 5px;"></div> </div> <p style="text-align: center;">4% 73% 18% • 5%</p>

2 Entry composition

There are 4 unique types of molecules in this entry. The entry contains 6993 atoms, of which 0 are hydrogens and 0 are deuteriums.

In the tables below, the ZeroOcc column contains the number of atoms modelled with zero occupancy, the AltConf column contains the number of residues with at least one atom in alternate conformation and the Trace column contains the number of residues modelled with at most 2 atoms.

- Molecule 1 is a protein called Side.

Mol	Chain	Residues	Atoms					ZeroOcc	AltConf	Trace
			Total	C	N	O	S			
1	B	348	2827	1787	490	543	7	0	0	0
1	A	348	2827	1787	490	543	7	0	0	0

There are 18 discrepancies between the modelled and reference sequences:

Chain	Residue	Modelled	Actual	Comment	Reference
B	221	MET	-	initiating methionine	UNP Q6RCR1
B	590	LEU	-	expression tag	UNP Q6RCR1
B	591	GLU	-	expression tag	UNP Q6RCR1
B	592	HIS	-	expression tag	UNP Q6RCR1
B	593	HIS	-	expression tag	UNP Q6RCR1
B	594	HIS	-	expression tag	UNP Q6RCR1
B	595	HIS	-	expression tag	UNP Q6RCR1
B	596	HIS	-	expression tag	UNP Q6RCR1
B	597	HIS	-	expression tag	UNP Q6RCR1
A	221	MET	-	initiating methionine	UNP Q6RCR1
A	590	LEU	-	expression tag	UNP Q6RCR1
A	591	GLU	-	expression tag	UNP Q6RCR1
A	592	HIS	-	expression tag	UNP Q6RCR1
A	593	HIS	-	expression tag	UNP Q6RCR1
A	594	HIS	-	expression tag	UNP Q6RCR1
A	595	HIS	-	expression tag	UNP Q6RCR1
A	596	HIS	-	expression tag	UNP Q6RCR1
A	597	HIS	-	expression tag	UNP Q6RCR1

- Molecule 2 is a protein called ubiquitin.

Mol	Chain	Residues	Atoms					ZeroOcc	AltConf	Trace
			Total	C	N	O	S			
2	C	73	582	368	99	114	1	0	0	0

Continued on next page...

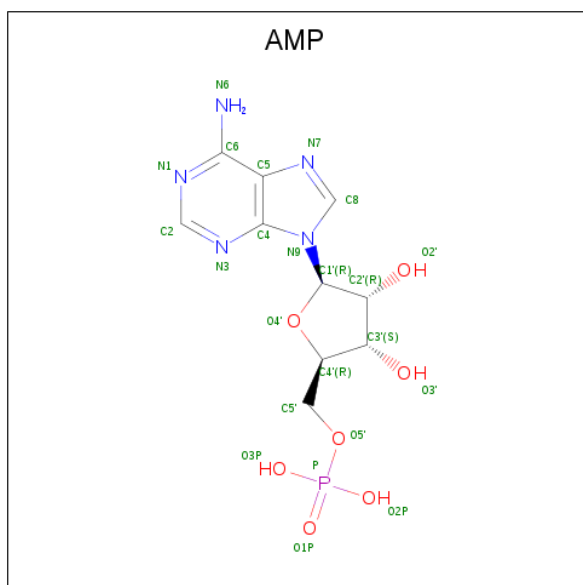
Continued from previous page...

Mol	Chain	Residues	Atoms					ZeroOcc	AltConf	Trace
			Total	C	N	O	S			
2	D	74	593	374	103	115	1	0	0	0

There are 4 discrepancies between the modelled and reference sequences:

Chain	Residue	Modelled	Actual	Comment	Reference
C	-1	GLY	-	expression tag	UNP P0CG48
C	0	SER	-	expression tag	UNP P0CG48
D	-1	GLY	-	expression tag	UNP P0CG48
D	0	SER	-	expression tag	UNP P0CG48

- Molecule 3 is ADENOSINE MONOPHOSPHATE (three-letter code: AMP) (formula: $C_{10}H_{14}N_5O_7P$).



Mol	Chain	Residues	Atoms					ZeroOcc	AltConf
			Total	C	N	O	P		
3	B	1	23	10	5	7	1	0	0
3	A	1	23	10	5	7	1	0	0

- Molecule 4 is water.

Mol	Chain	Residues	Atoms	ZeroOcc	AltConf
4	B	67	Total O 67 67	0	0
4	C	4	Total O 4 4	0	0

Continued on next page...

Continued from previous page...

Mol	Chain	Residues	Atoms		ZeroOcc	AltConf
4	A	41	Total	O	0	0
			41	41		
4	D	6	Total	O	0	0
			6	6		

4 Data and refinement statistics

Property	Value	Source
Space group	P 1 21 1	Depositor
Cell constants a, b, c, α , β , γ	95.42Å 55.38Å 98.44Å 90.00° 110.22° 90.00°	Depositor
Resolution (Å)	48.43 – 2.22 48.43 – 2.22	Depositor EDS
% Data completeness (in resolution range)	98.7 (48.43-2.22) 98.7 (48.43-2.22)	Depositor EDS
R_{merge}	0.09	Depositor
R_{sym}	(Not available)	Depositor
$\langle I/\sigma(I) \rangle$ ¹	1.75 (at 2.22Å)	Xtrriage
Refinement program	PHENIX 1.8.4_1496	Depositor
R, R_{free}	0.181 , 0.226 0.186 , 0.229	Depositor DCC
R_{free} test set	2379 reflections (4.99%)	wwPDB-VP
Wilson B-factor (Å ²)	49.3	Xtrriage
Anisotropy	0.556	Xtrriage
Bulk solvent k_{sol} (e/Å ³), B_{sol} (Å ²)	0.35 , 52.9	EDS
L-test for twinning ²	$\langle L \rangle = 0.50$, $\langle L^2 \rangle = 0.33$	Xtrriage
Estimated twinning fraction	0.014 for l,-k,h	Xtrriage
F_o, F_c correlation	0.96	EDS
Total number of atoms	6993	wwPDB-VP
Average B, all atoms (Å ²)	69.0	wwPDB-VP

Xtrriage's analysis on translational NCS is as follows: *The largest off-origin peak in the Patterson function is 6.98% of the height of the origin peak. No significant pseudotranslation is detected.*

¹Intensities estimated from amplitudes.

²Theoretical values of $\langle |L| \rangle$, $\langle L^2 \rangle$ for acentric reflections are 0.5, 0.333 respectively for untwinned datasets, and 0.375, 0.2 for perfectly twinned datasets.

5 Model quality [i](#)

5.1 Standard geometry [i](#)

Bond lengths and bond angles in the following residue types are not validated in this section: AMP

The Z score for a bond length (or angle) is the number of standard deviations the observed value is removed from the expected value. A bond length (or angle) with $|Z| > 5$ is considered an outlier worth inspection. RMSZ is the root-mean-square of all Z scores of the bond lengths (or angles).

Mol	Chain	Bond lengths		Bond angles	
		RMSZ	# Z >5	RMSZ	# Z >5
1	A	0.48	0/2892	0.52	0/3905
1	B	0.41	0/2892	0.52	0/3905
2	C	0.38	0/588	0.54	0/792
2	D	0.46	0/599	0.55	0/806
All	All	0.44	0/6971	0.52	0/9408

There are no bond length outliers.

There are no bond angle outliers.

There are no chirality outliers.

There are no planarity outliers.

5.2 Too-close contacts [i](#)

In the following table, the Non-H and H(model) columns list the number of non-hydrogen atoms and hydrogen atoms in the chain respectively. The H(added) column lists the number of hydrogen atoms added and optimized by MolProbity. The Clashes column lists the number of clashes within the asymmetric unit, whereas Symm-Clashes lists symmetry related clashes.

Mol	Chain	Non-H	H(model)	H(added)	Clashes	Symm-Clashes
1	A	2827	0	2721	61	0
1	B	2827	0	2721	35	0
2	C	582	0	610	7	0
2	D	593	0	623	8	0
3	A	23	0	12	1	0
3	B	23	0	12	0	0
4	A	41	0	0	1	0
4	B	67	0	0	0	0
4	C	4	0	0	0	0

Continued on next page...

Continued from previous page...

Mol	Chain	Non-H	H(model)	H(added)	Clashes	Symm-Clashes
4	D	6	0	0	1	0
All	All	6993	0	6699	109	0

The all-atom clashscore is defined as the number of clashes found per 1000 atoms (including hydrogen atoms). The all-atom clashscore for this structure is 8.

All (109) close contacts within the same asymmetric unit are listed below, sorted by their clash magnitude.

Atom-1	Atom-2	Interatomic distance (Å)	Clash overlap (Å)
2:D:51:GLU:OE1	2:D:52:ASP:N	1.87	1.04
1:A:481:ILE:HG21	1:A:499:PHE:CZ	2.00	0.95
1:A:481:ILE:HG21	1:A:499:PHE:HZ	1.35	0.91
1:A:506:GLU:O	1:A:509:GLN:HG3	1.76	0.84
1:A:507:GLU:HG3	1:A:508:ASN:H	1.45	0.82
1:A:505:LEU:HD22	1:A:509:GLN:O	1.80	0.82
1:A:505:LEU:HD23	1:A:509:GLN:CB	2.09	0.82
1:B:574:HIS:O	1:B:576:THR:HG22	1.82	0.79
1:A:499:PHE:HD1	1:A:503:LYS:CE	1.95	0.79
1:B:499:PHE:HD1	1:B:503:LYS:NZ	1.81	0.77
1:A:481:ILE:HD13	1:A:499:PHE:HZ	1.51	0.76
1:B:338:GLU:OE1	1:B:339:SER:N	2.20	0.74
1:B:264:PHE:HB2	1:B:556:ALA:HB2	1.70	0.74
1:A:505:LEU:HD23	1:A:509:GLN:HB3	1.69	0.73
1:A:506:GLU:O	1:A:507:GLU:HG2	1.92	0.70
1:B:505:LEU:HB3	1:B:509:GLN:OE1	1.92	0.69
2:D:26:VAL:HG21	2:D:56:LEU:HD21	1.75	0.68
2:C:42:ARG:NH1	2:C:49:GLN:OE1	2.28	0.67
1:B:485:SER:O	1:B:485:SER:OG	2.11	0.67
1:B:499:PHE:HD1	1:B:503:LYS:HZ3	1.41	0.67
1:A:257:VAL:HG21	1:A:338:GLU:HG2	1.75	0.67
1:A:481:ILE:HD13	1:A:499:PHE:CZ	2.29	0.66
1:A:505:LEU:HB3	1:A:509:GLN:HB2	1.78	0.65
1:B:245:TYR:HA	1:B:249:LEU:HB2	1.79	0.65
1:A:505:LEU:HD23	1:A:509:GLN:HB2	1.78	0.64
1:A:507:GLU:HG3	1:A:508:ASN:N	2.11	0.64
1:B:273:HIS:O	1:B:409:ARG:NH2	2.25	0.63
1:A:499:PHE:HD1	1:A:503:LYS:HE3	1.62	0.62
1:A:542:LYS:HG2	1:A:543:GLU:H	1.65	0.61
1:A:499:PHE:CD1	1:A:503:LYS:HE3	2.35	0.61
1:A:477:ASP:OD1	1:A:477:ASP:N	2.25	0.61
1:A:473:VAL:HG23	1:A:499:PHE:CD2	2.36	0.61

Continued on next page...

Continued from previous page...

Atom-1	Atom-2	Interatomic distance (Å)	Clash overlap (Å)
1:A:499:PHE:HD1	1:A:503:LYS:HE2	1.67	0.59
1:A:481:ILE:CG2	1:A:499:PHE:CZ	2.81	0.58
1:A:508:ASN:HD22	1:A:508:ASN:N	2.03	0.56
1:A:474:ILE:HG23	1:A:479:ASN:C	2.27	0.55
1:A:482:ARG:NE	1:A:494:GLY:O	2.37	0.55
1:B:476:GLN:H	1:B:476:GLN:CD	2.10	0.55
1:A:253:TYR:HE2	1:A:337:GLU:HG2	1.71	0.55
1:B:553:ILE:HD11	1:B:557:ARG:HH21	1.71	0.54
1:A:481:ILE:CG2	1:A:499:PHE:CE2	2.91	0.54
1:B:292:GLU:HB3	1:B:433:ALA:HB1	1.90	0.54
2:C:18:GLU:HG3	2:C:19:PRO:HD2	1.91	0.53
1:A:508:ASN:HD22	1:A:508:ASN:H	1.54	0.53
1:A:293:ALA:HB2	1:A:429:ILE:HG22	1.91	0.53
1:A:542:LYS:HG2	1:A:543:GLU:N	2.23	0.53
1:B:537:GLY:HA2	1:B:546:TYR:CZ	2.44	0.52
1:B:575:GLN:C	1:B:576:THR:HG22	2.30	0.52
1:A:473:VAL:HG12	1:A:474:ILE:N	2.25	0.52
1:B:264:PHE:CE1	2:C:73:LEU:HD23	2.43	0.52
1:B:481:ILE:HB	1:B:499:PHE:HZ	1.75	0.52
1:A:292:GLU:HB3	1:A:433:ALA:HB1	1.92	0.52
2:D:42:ARG:HG3	2:D:72:ARG:HD2	1.92	0.52
1:B:547:LEU:HD11	2:C:71:LEU:HD13	1.91	0.52
1:A:485:SER:O	1:A:485:SER:OG	2.21	0.51
2:C:16:GLU:H	2:C:16:GLU:CD	2.13	0.51
2:C:19:PRO:HB3	2:C:57:SER:HB3	1.93	0.51
1:A:501:GLN:H	1:A:501:GLN:NE2	2.09	0.50
1:A:481:ILE:HG21	1:A:499:PHE:CE2	2.44	0.50
1:B:411:LYS:HB3	1:B:417:TYR:CD2	2.47	0.50
1:A:506:GLU:C	1:A:507:GLU:HG2	2.32	0.48
1:A:537:GLY:HA2	1:A:546:TYR:CZ	2.48	0.48
1:A:463:HIS:ND1	1:A:464:LEU:N	2.61	0.48
1:B:507:GLU:C	1:B:508:ASN:HD22	2.16	0.48
1:B:538:LEU:HD12	1:B:539:PRO:HD2	1.96	0.48
1:A:253:TYR:CD2	1:A:336:ASP:HA	2.49	0.48
1:B:267:GLN:HA	1:B:267:GLN:OE1	2.14	0.48
1:A:507:GLU:CG	1:A:508:ASN:N	2.73	0.47
1:B:507:GLU:O	1:B:508:ASN:HB2	2.14	0.47
1:B:377:LYS:HE2	1:B:381:ASP:OD1	2.15	0.47
1:A:272:GLN:OE1	2:D:73:LEU:HD12	2.15	0.47
1:A:508:ASN:ND2	1:A:508:ASN:N	2.60	0.47
2:D:63:LYS:HG3	2:D:64:GLU:HG2	1.97	0.47

Continued on next page...

Continued from previous page...

Atom-1	Atom-2	Interatomic distance (Å)	Clash overlap (Å)
1:A:481:ILE:HG12	1:A:482:ARG:N	2.29	0.46
2:D:24:GLU:HG3	2:D:52:ASP:HB3	1.97	0.46
1:A:473:VAL:CG1	1:A:474:ILE:N	2.79	0.46
1:B:477:ASP:N	1:B:477:ASP:OD1	2.48	0.46
1:B:409:ARG:HG3	1:B:410:VAL:HG13	1.98	0.45
1:A:264:PHE:CD1	1:A:264:PHE:N	2.85	0.45
1:A:366:ILE:CG2	1:A:367:PRO:HA	2.46	0.45
1:B:293:ALA:HB2	1:B:429:ILE:HG22	1.99	0.45
1:B:477:ASP:O	1:B:479:ASN:N	2.42	0.45
1:A:474:ILE:HG23	1:A:479:ASN:O	2.17	0.45
1:A:505:LEU:CD2	1:A:509:GLN:O	2.58	0.44
1:B:575:GLN:C	1:B:576:THR:CG2	2.85	0.44
1:B:576:THR:OG1	1:B:576:THR:O	2.28	0.44
3:A:601:AMP:O3P	4:A:701:HOH:O	2.21	0.44
2:C:22:THR:HA	2:C:55:THR:HA	1.99	0.44
2:D:37:PRO:HA	2:D:38:PRO:HD3	1.92	0.44
2:D:34:GLU:O	4:D:101:HOH:O	2.21	0.44
1:A:505:LEU:CD2	1:A:509:GLN:HB2	2.48	0.43
1:A:482:ARG:NH2	1:A:522:GLU:OE1	2.51	0.43
1:B:413:PRO:HA	1:B:414:PRO:HD3	1.82	0.43
1:A:245:TYR:HA	1:A:249:LEU:HB2	2.00	0.43
1:A:336:ASP:OD1	1:A:338:GLU:N	2.49	0.42
1:A:481:ILE:CD1	1:A:499:PHE:HZ	2.26	0.42
1:A:413:PRO:HA	1:A:414:PRO:HD3	1.87	0.42
1:B:433:ALA:O	1:B:437:VAL:HG23	2.19	0.42
1:A:533:LYS:O	1:A:533:LYS:HG3	2.20	0.41
1:B:507:GLU:C	1:B:508:ASN:ND2	2.73	0.41
1:A:510:ARG:HG3	1:A:510:ARG:O	2.20	0.41
1:A:249:LEU:HA	1:A:271:ARG:HD2	2.02	0.41
1:A:372:ASP:OD1	1:A:374:LYS:HB3	2.20	0.41
1:A:525:LYS:HB2	1:A:525:LYS:HE2	1.81	0.41
1:A:385:ASP:OD1	1:A:388:HIS:HA	2.20	0.41
1:B:504:LYS:H	1:B:504:LYS:HG2	1.53	0.41
1:A:501:GLN:HE21	1:A:501:GLN:H	1.67	0.41
1:B:525:LYS:HA	1:B:525:LYS:HD2	1.86	0.41
1:B:506:GLU:N	1:B:509:GLN:OE1	2.54	0.40

There are no symmetry-related clashes.

5.3 Torsion angles [i](#)

5.3.1 Protein backbone [i](#)

In the following table, the Percentiles column shows the percent Ramachandran outliers of the chain as a percentile score with respect to all X-ray entries followed by that with respect to entries of similar resolution.

The Analysed column shows the number of residues for which the backbone conformation was analysed, and the total number of residues.

Mol	Chain	Analysed	Favoured	Allowed	Outliers	Percentiles	
1	A	344/377 (91%)	338 (98%)	6 (2%)	0	100	100
1	B	344/377 (91%)	335 (97%)	9 (3%)	0	100	100
2	C	71/78 (91%)	69 (97%)	2 (3%)	0	100	100
2	D	72/78 (92%)	71 (99%)	1 (1%)	0	100	100
All	All	831/910 (91%)	813 (98%)	18 (2%)	0	100	100

There are no Ramachandran outliers to report.

5.3.2 Protein sidechains [i](#)

In the following table, the Percentiles column shows the percent sidechain outliers of the chain as a percentile score with respect to all X-ray entries followed by that with respect to entries of similar resolution.

The Analysed column shows the number of residues for which the sidechain conformation was analysed, and the total number of residues.

Mol	Chain	Analysed	Rotameric	Outliers	Percentiles	
1	A	299/327 (91%)	283 (95%)	16 (5%)	22	25
1	B	299/327 (91%)	292 (98%)	7 (2%)	50	62
2	C	67/69 (97%)	65 (97%)	2 (3%)	41	51
2	D	68/69 (99%)	61 (90%)	7 (10%)	7	6
All	All	733/792 (93%)	701 (96%)	32 (4%)	28	34

All (32) residues with a non-rotameric sidechain are listed below:

Mol	Chain	Res	Type
1	B	339	SER
1	B	340	SER

Continued on next page...

Continued from previous page...

Mol	Chain	Res	Type
1	B	502	LYS
1	B	503	LYS
1	B	504	LYS
1	B	507	GLU
1	B	521	ASP
2	C	16	GLU
2	C	72	ARG
1	A	258	GLU
1	A	272	GLN
1	A	366	ILE
1	A	377	LYS
1	A	463	HIS
1	A	476	GLN
1	A	477	ASP
1	A	501	GLN
1	A	502	LYS
1	A	503	LYS
1	A	506	GLU
1	A	508	ASN
1	A	532	LYS
1	A	533	LYS
1	A	534	LEU
1	A	566	LEU
2	D	33	LYS
2	D	42	ARG
2	D	49	GLN
2	D	51	GLU
2	D	54	ARG
2	D	57	SER
2	D	63	LYS

Some sidechains can be flipped to improve hydrogen bonding and reduce clashes. All (3) such sidechains are listed below:

Mol	Chain	Res	Type
1	B	508	ASN
1	A	501	GLN
1	A	508	ASN

5.3.3 RNA

There are no RNA molecules in this entry.

5.4 Non-standard residues in protein, DNA, RNA chains [i](#)

There are no non-standard protein/DNA/RNA residues in this entry.

5.5 Carbohydrates [i](#)

There are no carbohydrates in this entry.

5.6 Ligand geometry [i](#)

2 ligands are modelled in this entry.

In the following table, the Counts columns list the number of bonds (or angles) for which Mogul statistics could be retrieved, the number of bonds (or angles) that are observed in the model and the number of bonds (or angles) that are defined in the Chemical Component Dictionary. The Link column lists molecule types, if any, to which the group is linked. The Z score for a bond length (or angle) is the number of standard deviations the observed value is removed from the expected value. A bond length (or angle) with $|Z| > 2$ is considered an outlier worth inspection. RMSZ is the root-mean-square of all Z scores of the bond lengths (or angles).

Mol	Type	Chain	Res	Link	Bond lengths			Bond angles		
					Counts	RMSZ	# Z > 2	Counts	RMSZ	# Z > 2
3	AMP	B	601	-	22,25,25	0.92	1 (4%)	25,38,38	1.39	5 (20%)
3	AMP	A	601	-	22,25,25	0.89	1 (4%)	25,38,38	1.26	3 (12%)

In the following table, the Chirals column lists the number of chiral outliers, the number of chiral centers analysed, the number of these observed in the model and the number defined in the Chemical Component Dictionary. Similar counts are reported in the Torsion and Rings columns. '-' means no outliers of that kind were identified.

Mol	Type	Chain	Res	Link	Chirals	Torsions	Rings
3	AMP	B	601	-	-	2/6/26/26	0/3/3/3
3	AMP	A	601	-	-	0/6/26/26	0/3/3/3

All (2) bond length outliers are listed below:

Mol	Chain	Res	Type	Atoms	Z	Observed(Å)	Ideal(Å)
3	A	601	AMP	C5-C4	2.51	1.47	1.40
3	B	601	AMP	C5-C4	2.20	1.46	1.40

All (8) bond angle outliers are listed below:

Mol	Chain	Res	Type	Atoms	Z	Observed($^{\circ}$)	Ideal($^{\circ}$)
3	B	601	AMP	N3-C2-N1	-3.62	123.01	128.68
3	A	601	AMP	N3-C2-N1	-3.07	123.88	128.68
3	A	601	AMP	C4-C5-N7	-2.52	106.78	109.40
3	B	601	AMP	C4-C5-N7	-2.28	107.02	109.40
3	B	601	AMP	O3P-P-O5'	-2.17	100.95	106.73
3	B	601	AMP	C2-N1-C6	2.13	122.40	118.75
3	B	601	AMP	N6-C6-N1	2.10	122.93	118.57
3	A	601	AMP	O2P-P-O5'	-2.04	101.30	106.73

There are no chirality outliers.

All (2) torsion outliers are listed below:

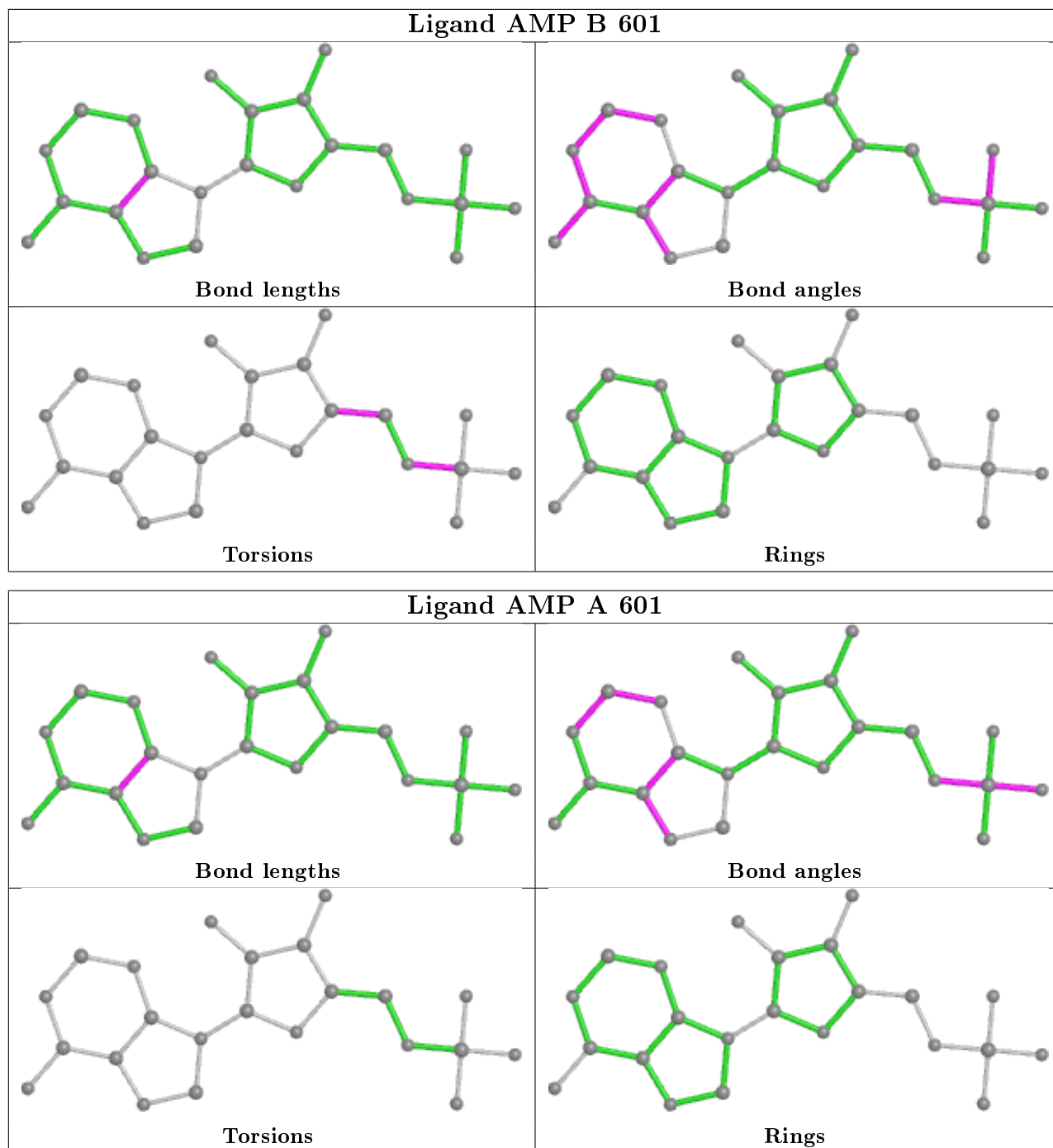
Mol	Chain	Res	Type	Atoms
3	B	601	AMP	C5'-O5'-P-O3P
3	B	601	AMP	C3'-C4'-C5'-O5'

There are no ring outliers.

1 monomer is involved in 1 short contact:

Mol	Chain	Res	Type	Clashes	Symm-Clashes
3	A	601	AMP	1	0

The following is a two-dimensional graphical depiction of Mogul quality analysis of bond lengths, bond angles, torsion angles, and ring geometry for all instances of the Ligand of Interest. In addition, ligands with molecular weight > 250 and outliers as shown on the validation Tables will also be included. For torsion angles, if less than 5% of the Mogul distribution of torsion angles is within 10 degrees of the torsion angle in question, then that torsion angle is considered an outlier. Any bond that is central to one or more torsion angles identified as an outlier by Mogul will be highlighted in the graph. For rings, the root-mean-square deviation (RMSD) between the ring in question and similar rings identified by Mogul is calculated over all ring torsion angles. If the average RMSD is greater than 60 degrees and the minimal RMSD between the ring in question and any Mogul-identified rings is also greater than 60 degrees, then that ring is considered an outlier. The outliers are highlighted in purple. The color gray indicates Mogul did not find sufficient equivalents in the CSD to analyse the geometry.



5.7 Other polymers [i](#)

There are no such residues in this entry.

5.8 Polymer linkage issues [i](#)

There are no chain breaks in this entry.

6 Fit of model and data

6.1 Protein, DNA and RNA chains

In the following table, the column labelled ‘#RSRZ> 2’ contains the number (and percentage) of RSRZ outliers, followed by percent RSRZ outliers for the chain as percentile scores relative to all X-ray entries and entries of similar resolution. The OWAB column contains the minimum, median, 95th percentile and maximum values of the occupancy-weighted average B-factor per residue. The column labelled ‘Q< 0.9’ lists the number of (and percentage) of residues with an average occupancy less than 0.9.

Mol	Chain	Analysed	<RSRZ>	#RSRZ>2	OWAB(Å ²)	Q<0.9
1	A	348/377 (92%)	0.41	23 (6%) 18 17	36, 66, 124, 171	0
1	B	348/377 (92%)	0.29	17 (4%) 29 28	36, 57, 104, 131	0
2	C	73/78 (93%)	0.52	5 (6%) 17 16	45, 75, 100, 105	0
2	D	74/78 (94%)	0.55	3 (4%) 37 35	56, 76, 107, 120	0
All	All	843/910 (92%)	0.38	48 (5%) 23 22	36, 65, 111, 171	0

All (48) RSRZ outliers are listed below:

Mol	Chain	Res	Type	RSRZ
1	A	481	ILE	6.7
1	A	493	SER	6.4
2	D	20	SER	6.1
1	A	505	LEU	5.0
1	A	475	GLY	4.9
1	A	506	GLU	4.9
1	A	478	GLY	4.5
1	A	472	TYR	4.5
1	A	499	PHE	4.1
1	B	474	ILE	4.1
1	A	482	ARG	3.9
1	A	339	SER	3.9
1	B	505	LEU	3.7
1	B	475	GLY	3.6
1	A	509	GLN	3.6
1	B	499	PHE	3.6
1	A	484	GLU	3.5
1	B	476	GLN	3.5
1	A	507	GLU	3.4
2	C	60	ASN	3.3
1	A	473	VAL	3.3

Continued on next page...

Continued from previous page...

Mol	Chain	Res	Type	RSRZ
2	C	72	ARG	3.2
1	A	340	SER	3.1
1	A	485	SER	3.1
2	D	56	LEU	3.0
1	A	504	LYS	2.9
1	B	521	ASP	2.6
1	B	264	PHE	2.5
1	A	502	LYS	2.5
1	B	477	ASP	2.5
1	A	576	THR	2.5
2	D	19	PRO	2.5
1	B	503	LYS	2.4
1	B	481	ILE	2.3
1	B	339	SER	2.3
1	B	478	GLY	2.3
1	A	494	GLY	2.3
2	C	1	MET	2.2
2	C	57	SER	2.2
1	B	576	THR	2.2
1	B	484	GLU	2.2
1	A	343	TYR	2.2
1	B	485	SER	2.1
1	A	517	TYR	2.1
2	C	52	ASP	2.1
1	B	473	VAL	2.0
1	B	479	ASN	2.0
1	A	341	LYS	2.0

6.2 Non-standard residues in protein, DNA, RNA chains [i](#)

There are no non-standard protein/DNA/RNA residues in this entry.

6.3 Carbohydrates [i](#)

There are no carbohydrates in this entry.

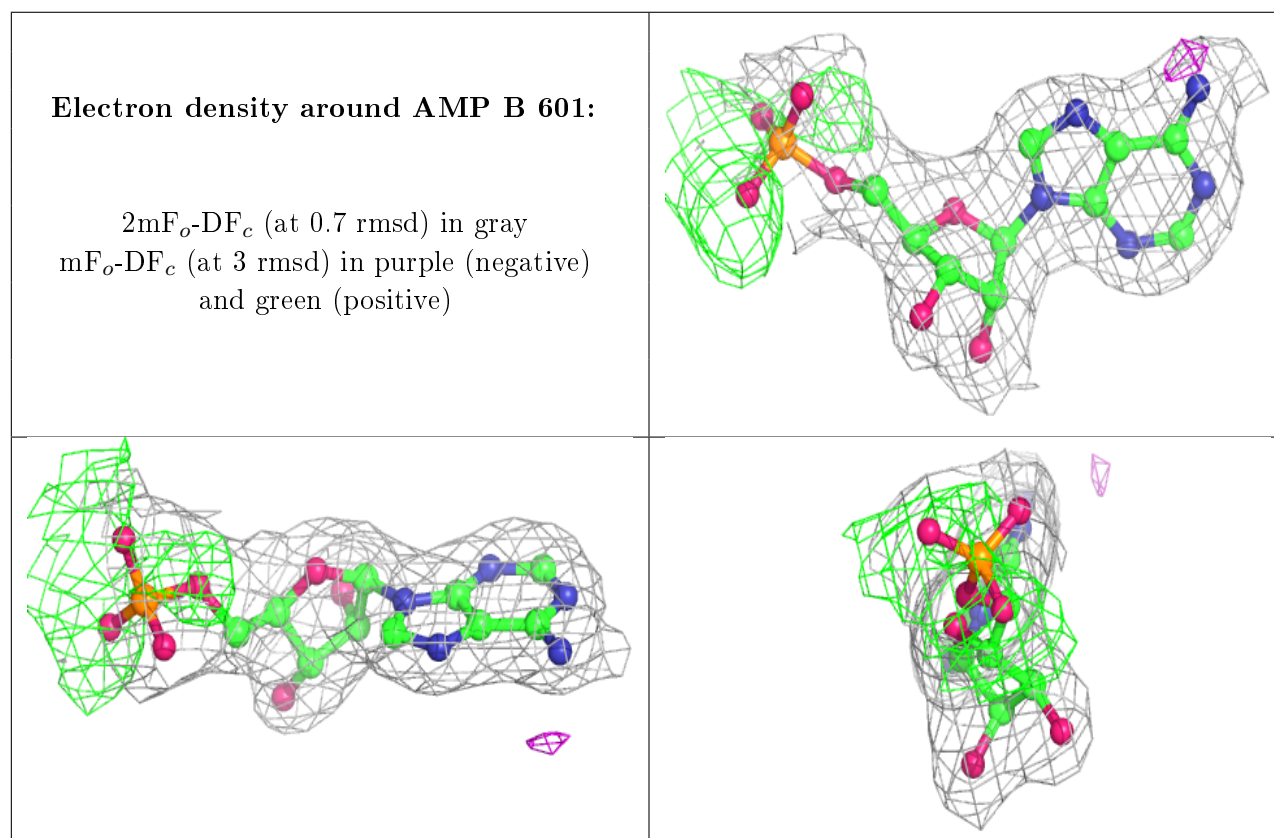
6.4 Ligands [i](#)

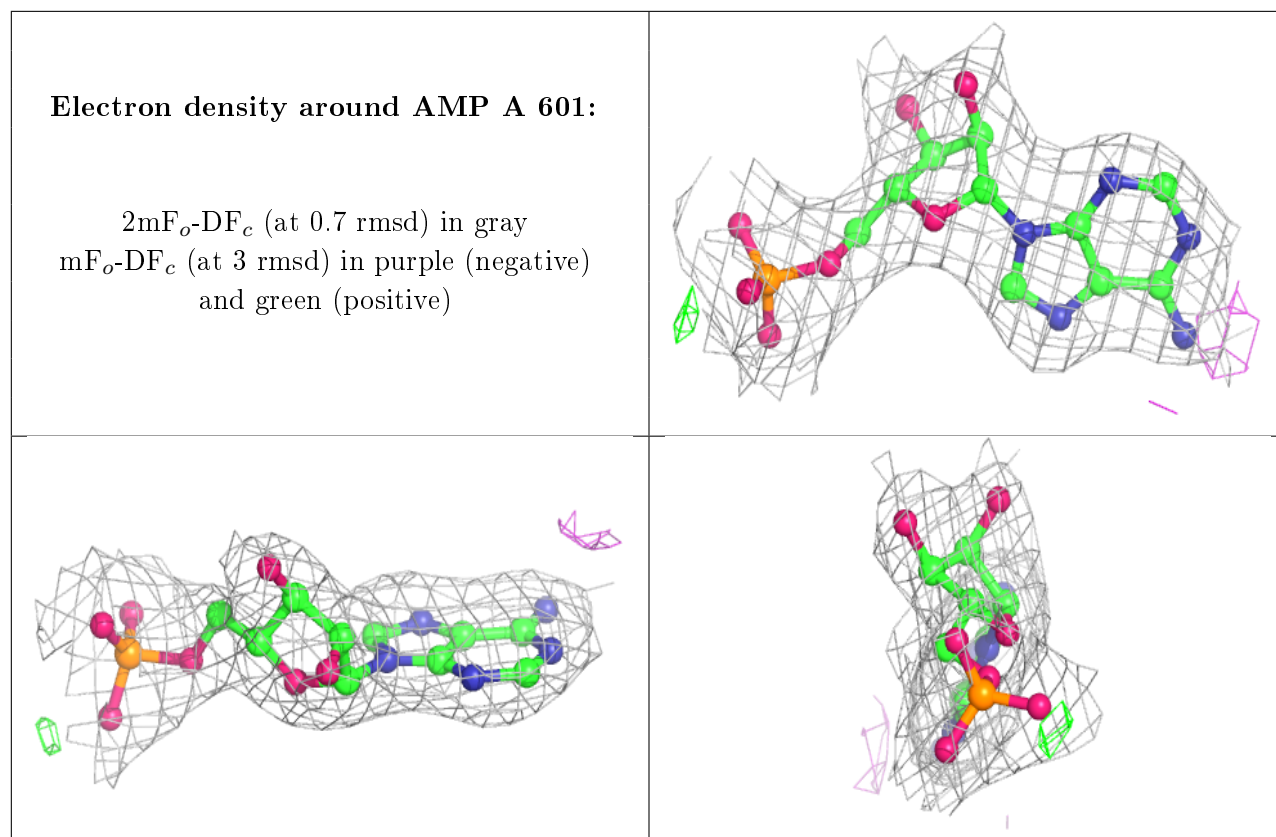
In the following table, the Atoms column lists the number of modelled atoms in the group and the number defined in the chemical component dictionary. The B-factors column lists the minimum,

median, 95th percentile and maximum values of B factors of atoms in the group. The column labelled 'Q< 0.9' lists the number of atoms with occupancy less than 0.9.

Mol	Type	Chain	Res	Atoms	RSCC	RSR	B-factors(Å ²)	Q<0.9
3	AMP	B	601	23/23	0.94	0.14	48,55,74,77	0
3	AMP	A	601	23/23	0.95	0.14	53,61,74,81	0

The following is a graphical depiction of the model fit to experimental electron density of all instances of the Ligand of Interest. In addition, ligands with molecular weight > 250 and outliers as shown on the geometry validation Tables will also be included. Each fit is shown from different orientation to approximate a three-dimensional view.





6.5 Other polymers [i](#)

There are no such residues in this entry.