



# wwPDB X-ray Structure Validation Summary Report ⓘ

Dec 23, 2024 – 12:34 PM JST

PDB ID : 8ZQG  
Title : Crystal structure of WIPI3 in complex with ATG16L1  
Authors : Gong, X.Y.; Pan, L.F.  
Deposited on : 2024-06-02  
Resolution : 2.77 Å(reported)

This is a wwPDB X-ray Structure Validation Summary Report for a publicly released PDB entry.

We welcome your comments at [validation@mail.wwpdb.org](mailto:validation@mail.wwpdb.org)

A user guide is available at

<https://www.wwpdb.org/validation/2017/XrayValidationReportHelp>

with specific help available everywhere you see the ⓘ symbol.

The types of validation reports are described at

<http://www.wwpdb.org/validation/2017/FAQs#types>.

---

The following versions of software and data (see [references ⓘ](#)) were used in the production of this report:

MolProbity : 4.02b-467  
Xtriage (Phenix) : 1.21  
EDS : 3.0  
Percentile statistics : 20231227.v01 (using entries in the PDB archive December 27th 2023)  
CCP4 : 9.0.004 (Gargrove)  
Density-Fitness : 1.0.11  
Ideal geometry (proteins) : Engh & Huber (2001)  
Ideal geometry (DNA, RNA) : Parkinson et al. (1996)  
Validation Pipeline (wwPDB-VP) : 2.40

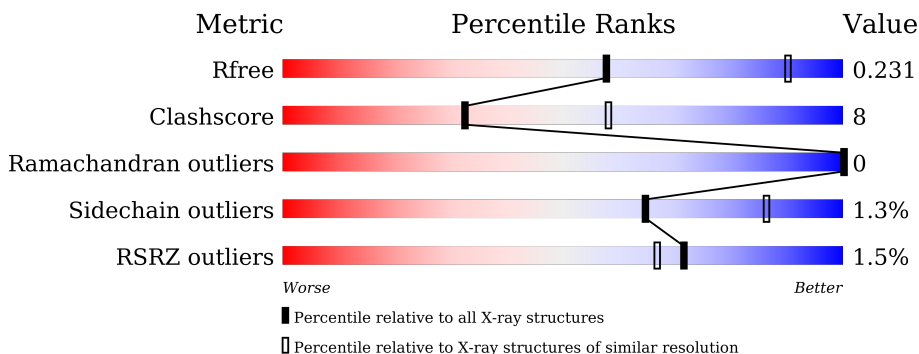
# 1 Overall quality at a glance

The following experimental techniques were used to determine the structure:

*X-RAY DIFFRACTION*

The reported resolution of this entry is 2.77 Å.

Percentile scores (ranging between 0-100) for global validation metrics of the entry are shown in the following graphic. The table shows the number of entries on which the scores are based.



Metric	Whole archive (#Entries)	Similar resolution (#Entries, resolution range(Å))
$R_{free}$	164625	4924 (2.80-2.76)
Clashscore	180529	5458 (2.80-2.76)
Ramachandran outliers	177936	5386 (2.80-2.76)
Sidechain outliers	177891	5388 (2.80-2.76)
RSRZ outliers	164620	4926 (2.80-2.76)

The table below summarises the geometric issues observed across the polymeric chains and their fit to the electron density. The red, orange, yellow and green segments of the lower bar indicate the fraction of residues that contain outliers for  $\geq 3$ , 2, 1 and 0 types of geometric quality criteria respectively. A grey segment represents the fraction of residues that are not modelled. The numeric value for each fraction is indicated below the corresponding segment, with a dot representing fractions  $\leq 5\%$ . The upper red bar (where present) indicates the fraction of residues that have poor fit to the electron density. The numeric value is given above the bar.

Mol	Chain	Length	Quality of chain
1	A	323	 80% 16% . .
1	B	323	 79% 17% .
2	C	69	 55% 19% 26%
2	D	69	 62% 13% 25%

## 2 Entry composition i

There are 3 unique types of molecules in this entry. The entry contains 5631 atoms, of which 0 are hydrogens and 0 are deuteriums.

In the tables below, the ZeroOcc column contains the number of atoms modelled with zero occupancy, the AltConf column contains the number of residues with at least one atom in alternate conformation and the Trace column contains the number of residues modelled with at most 2 atoms.

- Molecule 1 is a protein called WD repeat domain phosphoinositide-interacting protein 3.

Mol	Chain	Residues	Atoms					ZeroOcc	AltConf	Trace
			Total	C	N	O	S			
1	B	310	2392	1525	406	443	18	0	0	0
1	A	312	2408	1534	410	446	18	0	0	0

There are 44 discrepancies between the modelled and reference sequences:

Chain	Residue	Modelled	Actual	Comment	Reference
B	4	GLY	-	expression tag	UNP Q5MNZ6
B	5	PRO	-	expression tag	UNP Q5MNZ6
B	6	GLY	-	expression tag	UNP Q5MNZ6
B	7	SER	-	expression tag	UNP Q5MNZ6
B	?	-	ARG	deletion	UNP Q5MNZ6
B	?	-	ASN	deletion	UNP Q5MNZ6
B	?	-	LYS	deletion	UNP Q5MNZ6
B	?	-	GLN	deletion	UNP Q5MNZ6
B	?	-	SER	deletion	UNP Q5MNZ6
B	?	-	SER	deletion	UNP Q5MNZ6
B	?	-	LEU	deletion	UNP Q5MNZ6
B	?	-	ALA	deletion	UNP Q5MNZ6
B	?	-	SER	deletion	UNP Q5MNZ6
B	?	-	ALA	deletion	UNP Q5MNZ6
B	?	-	SER	deletion	UNP Q5MNZ6
B	?	-	PHE	deletion	UNP Q5MNZ6
B	?	-	LEU	deletion	UNP Q5MNZ6
B	?	-	PRO	deletion	UNP Q5MNZ6
B	?	-	LYS	deletion	UNP Q5MNZ6
B	?	-	TYR	deletion	UNP Q5MNZ6
B	?	-	PHE	deletion	UNP Q5MNZ6
B	?	-	SER	deletion	UNP Q5MNZ6
A	4	GLY	-	expression tag	UNP Q5MNZ6
A	5	PRO	-	expression tag	UNP Q5MNZ6
A	6	GLY	-	expression tag	UNP Q5MNZ6

*Continued on next page...*

*Continued from previous page...*

Chain	Residue	Modelled	Actual	Comment	Reference
A	7	SER	-	expression tag	UNP Q5MNZ6
A	?	-	ARG	deletion	UNP Q5MNZ6
A	?	-	ASN	deletion	UNP Q5MNZ6
A	?	-	LYS	deletion	UNP Q5MNZ6
A	?	-	GLN	deletion	UNP Q5MNZ6
A	?	-	SER	deletion	UNP Q5MNZ6
A	?	-	SER	deletion	UNP Q5MNZ6
A	?	-	LEU	deletion	UNP Q5MNZ6
A	?	-	ALA	deletion	UNP Q5MNZ6
A	?	-	SER	deletion	UNP Q5MNZ6
A	?	-	ALA	deletion	UNP Q5MNZ6
A	?	-	SER	deletion	UNP Q5MNZ6
A	?	-	PHE	deletion	UNP Q5MNZ6
A	?	-	LEU	deletion	UNP Q5MNZ6
A	?	-	PRO	deletion	UNP Q5MNZ6
A	?	-	LYS	deletion	UNP Q5MNZ6
A	?	-	TYR	deletion	UNP Q5MNZ6
A	?	-	PHE	deletion	UNP Q5MNZ6
A	?	-	SER	deletion	UNP Q5MNZ6

- Molecule 2 is a protein called Autophagy-related protein 16-1.

Mol	Chain	Residues	Atoms					ZeroOcc	AltConf	Trace
2	C	51	Total	C	N	O	S	0	0	0
			404	249	65	86	4			
2	D	52	Total	C	N	O	S	0	0	0
			413	254	66	89	4			

There are 8 discrepancies between the modelled and reference sequences:

Chain	Residue	Modelled	Actual	Comment	Reference
C	120	GLY	-	expression tag	UNP Q676U5
C	121	PRO	-	expression tag	UNP Q676U5
C	122	GLY	-	expression tag	UNP Q676U5
C	123	SER	-	expression tag	UNP Q676U5
D	120	GLY	-	expression tag	UNP Q676U5
D	121	PRO	-	expression tag	UNP Q676U5
D	122	GLY	-	expression tag	UNP Q676U5
D	123	SER	-	expression tag	UNP Q676U5

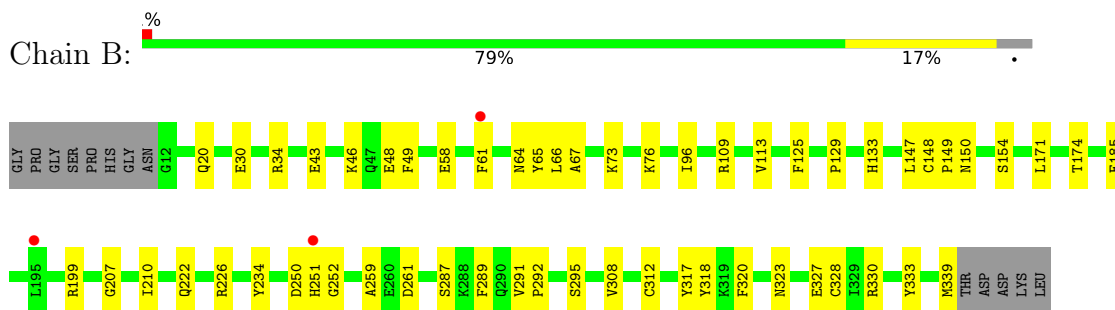
- Molecule 3 is water.

<b>Mol</b>	<b>Chain</b>	<b>Residues</b>	<b>Atoms</b>		<b>ZeroOcc</b>	<b>AltConf</b>
3	B	7	Total 7	O 7	0	0
3	A	7	Total 7	O 7	0	0

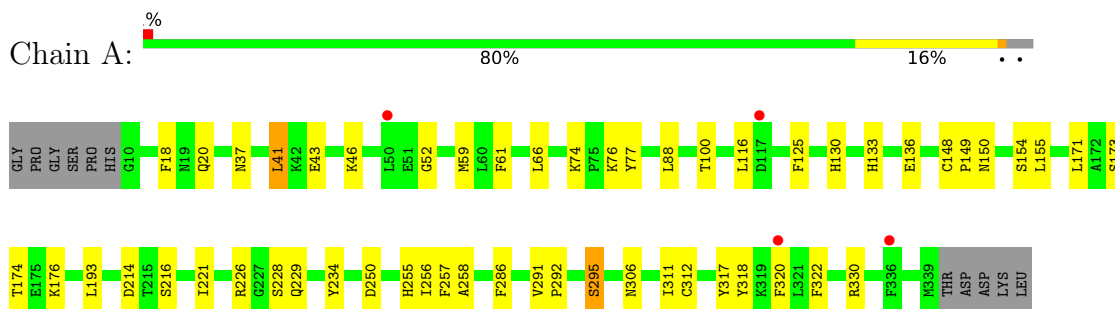
### 3 Residue-property plots [i](#)

These plots are drawn for all protein, RNA, DNA and oligosaccharide chains in the entry. The first graphic for a chain summarises the proportions of the various outlier classes displayed in the second graphic. The second graphic shows the sequence view annotated by issues in geometry and electron density. Residues are color-coded according to the number of geometric quality criteria for which they contain at least one outlier: green = 0, yellow = 1, orange = 2 and red = 3 or more. A red dot above a residue indicates a poor fit to the electron density ( $RSRZ > 2$ ). Stretches of 2 or more consecutive residues without any outlier are shown as a green connector. Residues present in the sample, but not in the model, are shown in grey.

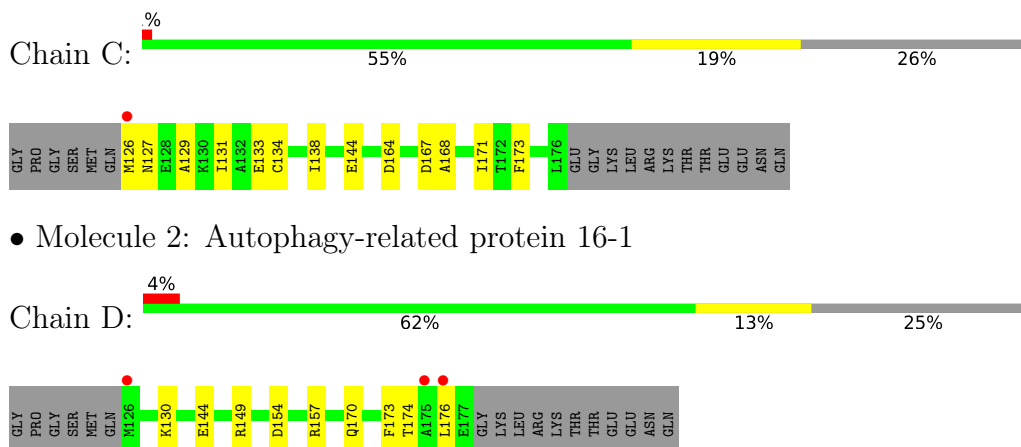
- Molecule 1: WD repeat domain phosphoinositide-interacting protein 3



- Molecule 1: WD repeat domain phosphoinositide-interacting protein 3



- Molecule 2: Autophagy-related protein 16-1



- Molecule 2: Autophagy-related protein 16-1

## 4 Data and refinement statistics

Property	Value	Source
Space group	P 63	Depositor
Cell constants a, b, c, $\alpha$ , $\beta$ , $\gamma$	182.66Å 182.66Å 54.34Å 90.00° 90.00° 120.00°	Depositor
Resolution (Å)	43.87 – 2.77 43.87 – 2.77	Depositor EDS
% Data completeness (in resolution range)	99.9 (43.87-2.77) 99.9 (43.87-2.77)	Depositor EDS
$R_{merge}$	(Not available)	Depositor
$R_{sym}$	(Not available)	Depositor
$\langle I/\sigma(I) \rangle$ <sup>1</sup>	2.10 (at 2.77Å)	Xtrriage
Refinement program	PHENIX 1.20.1_4487	Depositor
R, $R_{free}$	0.190 , 0.233 0.189 , 0.231	Depositor DCC
$R_{free}$ test set	1371 reflections (5.13%)	wwPDB-VP
Wilson B-factor (Å <sup>2</sup> )	77.4	Xtrriage
Anisotropy	0.106	Xtrriage
Bulk solvent $k_{sol}$ (e/Å <sup>3</sup> ), $B_{sol}$ (Å <sup>2</sup> )	0.34 , 56.8	EDS
L-test for twinning <sup>2</sup>	$\langle  L  \rangle = 0.49$ , $\langle L^2 \rangle = 0.32$	Xtrriage
Estimated twinning fraction	0.033 for h,-h-k,-l	Xtrriage
$F_o, F_c$ correlation	0.95	EDS
Total number of atoms	5631	wwPDB-VP
Average B, all atoms (Å <sup>2</sup> )	85.0	wwPDB-VP

Xtrriage's analysis on translational NCS is as follows: *The largest off-origin peak in the Patterson function is 3.47% of the height of the origin peak. No significant pseudotranslation is detected.*

<sup>1</sup>Intensities estimated from amplitudes.

<sup>2</sup>Theoretical values of  $\langle |L| \rangle$ ,  $\langle L^2 \rangle$  for acentric reflections are 0.5, 0.333 respectively for untwinned datasets, and 0.375, 0.2 for perfectly twinned datasets.

## 5 Model quality [i](#)

### 5.1 Standard geometry [i](#)

The Z score for a bond length (or angle) is the number of standard deviations the observed value is removed from the expected value. A bond length (or angle) with  $|Z| > 5$  is considered an outlier worth inspection. RMSZ is the root-mean-square of all Z scores of the bond lengths (or angles).

Mol	Chain	Bond lengths		Bond angles	
		RMSZ	# Z  >5	RMSZ	# Z  >5
1	A	0.42	0/2466	0.72	1/3344 (0.0%)
1	B	0.43	0/2450	0.72	0/3324
2	C	0.31	0/405	0.43	0/546
2	D	0.32	0/414	0.49	0/558
All	All	0.41	0/5735	0.69	1/7772 (0.0%)

There are no bond length outliers.

All (1) bond angle outliers are listed below:

Mol	Chain	Res	Type	Atoms	Z	Observed(°)	Ideal(°)
1	A	41	LEU	CB-CG-CD2	5.39	120.16	111.00

There are no chirality outliers.

There are no planarity outliers.

### 5.2 Too-close contacts [i](#)

In the following table, the Non-H and H(model) columns list the number of non-hydrogen atoms and hydrogen atoms in the chain respectively. The H(added) column lists the number of hydrogen atoms added and optimized by MolProbity. The Clashes column lists the number of clashes within the asymmetric unit, whereas Symm-Clashes lists symmetry-related clashes.

Mol	Chain	Non-H	H(model)	H(added)	Clashes	Symm-Clashes
1	A	2408	0	2352	36	0
1	B	2392	0	2332	38	0
2	C	404	0	402	10	0
2	D	413	0	408	9	0
3	A	7	0	0	1	0
3	B	7	0	0	0	0
All	All	5631	0	5494	87	0



The all-atom clashscore is defined as the number of clashes found per 1000 atoms (including hydrogen atoms). The all-atom clashscore for this structure is 8.

The worst 5 of 87 close contacts within the same asymmetric unit are listed below, sorted by their clash magnitude.

Atom-1	Atom-2	Interatomic distance (Å)	Clash overlap (Å)
1:B:46:LYS:HE3	1:B:48:GLU:OE2	1.87	0.73
2:C:173:PHE:HB3	2:D:173:PHE:HD2	1.54	0.72
1:A:41:LEU:HD12	1:A:317:TYR:CG	2.28	0.68
1:A:295:SER:OG	1:A:312:CYS:HB3	1.99	0.62
1:B:20:GLN:HG2	1:B:149:PRO:HB3	1.82	0.62

There are no symmetry-related clashes.

## 5.3 Torsion angles [i](#)

### 5.3.1 Protein backbone [i](#)

In the following table, the Percentiles column shows the percent Ramachandran outliers of the chain as a percentile score with respect to all X-ray entries followed by that with respect to entries of similar resolution.

The Analysed column shows the number of residues for which the backbone conformation was analysed, and the total number of residues.

Mol	Chain	Analysed	Favoured	Allowed	Outliers	Percentiles	
1	A	310/323 (96%)	305 (98%)	5 (2%)	0	100	100
1	B	308/323 (95%)	303 (98%)	5 (2%)	0	100	100
2	C	49/69 (71%)	49 (100%)	0	0	100	100
2	D	50/69 (72%)	48 (96%)	2 (4%)	0	100	100
All	All	717/784 (92%)	705 (98%)	12 (2%)	0	100	100

There are no Ramachandran outliers to report.

### 5.3.2 Protein sidechains [i](#)

In the following table, the Percentiles column shows the percent sidechain outliers of the chain as a percentile score with respect to all X-ray entries followed by that with respect to entries of similar resolution.

The Analysed column shows the number of residues for which the sidechain conformation was analysed, and the total number of residues.

Mol	Chain	Analysed	Rotameric	Outliers	Percentiles	
1	A	263/276 (95%)	259 (98%)	4 (2%)	60	84
1	B	261/276 (95%)	258 (99%)	3 (1%)	70	88
2	C	46/61 (75%)	46 (100%)	0	100	100
2	D	47/61 (77%)	46 (98%)	1 (2%)	48	77
All	All	617/674 (92%)	609 (99%)	8 (1%)	65	86

5 of 8 residues with a non-rotameric sidechain are listed below:

Mol	Chain	Res	Type
1	A	295	SER
1	A	228	SER
1	A	125	PHE
2	D	144	GLU
1	A	216	SER

Sometimes sidechains can be flipped to improve hydrogen bonding and reduce clashes. 5 of 7 such sidechains are listed below:

Mol	Chain	Res	Type
1	A	128	ASN
1	A	130	HIS
1	A	335	GLN
1	A	290	GLN
2	D	159	ASN

### 5.3.3 RNA [i](#)

There are no RNA molecules in this entry.

## 5.4 Non-standard residues in protein, DNA, RNA chains [i](#)

There are no non-standard protein/DNA/RNA residues in this entry.

## 5.5 Carbohydrates [i](#)

There are no oligosaccharides in this entry.

## 5.6 Ligand geometry [i](#)

There are no ligands in this entry.

## 5.7 Other polymers [i](#)

There are no such residues in this entry.

## 5.8 Polymer linkage issues [i](#)

There are no chain breaks in this entry.

## 6 Fit of model and data [i](#)

### 6.1 Protein, DNA and RNA chains [i](#)

In the following table, the column labelled ‘#RSRZ> 2’ contains the number (and percentage) of RSRZ outliers, followed by percent RSRZ outliers for the chain as percentile scores relative to all X-ray entries and entries of similar resolution. The OWAB column contains the minimum, median, 95<sup>th</sup> percentile and maximum values of the occupancy-weighted average B-factor per residue. The column labelled ‘Q< 0.9’ lists the number of (and percentage) of residues with an average occupancy less than 0.9.

Mol	Chain	Analysed	<RSRZ>	#RSRZ>2	OWAB(Å <sup>2</sup> )	Q<0.9
1	A	312/323 (96%)	-0.13	4 (1%) 74 70	52, 77, 111, 140	0
1	B	310/323 (95%)	-0.07	3 (0%) 79 75	54, 79, 111, 138	0
2	C	51/69 (73%)	0.08	1 (1%) 64 59	64, 95, 179, 187	0
2	D	52/69 (75%)	0.17	3 (5%) 30 25	64, 102, 176, 183	0
All	All	725/784 (92%)	-0.07	11 (1%) 71 67	52, 79, 129, 187	0

The worst 5 of 11 RSRZ outliers are listed below:

Mol	Chain	Res	Type	RSRZ
2	D	126	MET	3.0
2	C	126	MET	2.9
1	A	50	LEU	2.8
2	D	176	LEU	2.7
1	A	320	PHE	2.5

### 6.2 Non-standard residues in protein, DNA, RNA chains [i](#)

There are no non-standard protein/DNA/RNA residues in this entry.

### 6.3 Carbohydrates [i](#)

There are no monosaccharides in this entry.

### 6.4 Ligands [i](#)

There are no ligands in this entry.

## 6.5 Other polymers [i](#)

There are no such residues in this entry.