



Full wwPDB X-ray Structure Validation Report ⓘ

Sep 15, 2022 – 07:14 pm BST

PDB ID : 7ZZS
Title : HDAC2 complexed with an inhibitory ligand
Authors : Cleasby, A.; Tisi, D.
Deposited on : 2022-05-26
Resolution : 1.88 Å(reported)

This is a Full wwPDB X-ray Structure Validation Report for a publicly released PDB entry.

We welcome your comments at validation@mail.wwpdb.org

A user guide is available at

<https://www.wwpdb.org/validation/2017/XrayValidationReportHelp>

with specific help available everywhere you see the ⓘ symbol.

The types of validation reports are described at <http://www.wwpdb.org/validation/2017/FAQs#types>.

The following versions of software and data (see [references ⓘ](#)) were used in the production of this report:

MolProbity : 4.02b-467
Mogul : 1.8.4, CSD as541be (2020)
Xtriage (Phenix) : 1.13
EDS : 2.30
buster-report : 1.1.7 (2018)
Percentile statistics : 20191225.v01 (using entries in the PDB archive December 25th 2019)
Refmac : 5.8.0267
CCP4 : 7.1.010 (Gargrove)
Ideal geometry (proteins) : Engh & Huber (2001)
Ideal geometry (DNA, RNA) : Parkinson et al. (1996)
Validation Pipeline (wwPDB-VP) : 2.30

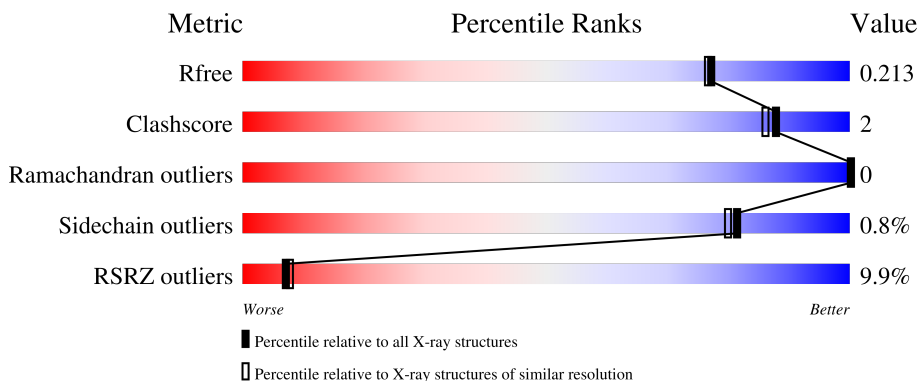
1 Overall quality at a glance

The following experimental techniques were used to determine the structure:

X-RAY DIFFRACTION

The reported resolution of this entry is 1.88 Å.

Percentile scores (ranging between 0-100) for global validation metrics of the entry are shown in the following graphic. The table shows the number of entries on which the scores are based.



Metric	Whole archive (#Entries)	Similar resolution (#Entries, resolution range(Å))
R_{free}	130704	9470 (1.90-1.86)
Clashscore	141614	10282 (1.90-1.86)
Ramachandran outliers	138981	10152 (1.90-1.86)
Sidechain outliers	138945	10152 (1.90-1.86)
RSRZ outliers	127900	9303 (1.90-1.86)

The table below summarises the geometric issues observed across the polymeric chains and their fit to the electron density. The red, orange, yellow and green segments of the lower bar indicate the fraction of residues that contain outliers for ≥ 3 , 2, 1 and 0 types of geometric quality criteria respectively. A grey segment represents the fraction of residues that are not modelled. The numeric value for each fraction is indicated below the corresponding segment, with a dot representing fractions $\leq 5\%$. The upper red bar (where present) indicates the fraction of residues that have poor fit to the electron density. The numeric value is given above the bar.

Mol	Chain	Length	Quality of chain
1	A	498	
1	B	498	
1	C	498	

2 Entry composition i

There are 11 unique types of molecules in this entry. The entry contains 9893 atoms, of which 223 are hydrogens and 0 are deuteriums.

In the tables below, the ZeroOcc column contains the number of atoms modelled with zero occupancy, the AltConf column contains the number of residues with at least one atom in alternate conformation and the Trace column contains the number of residues modelled with at most 2 atoms.

- Molecule 1 is a protein called Histone deacetylase 2.

Mol	Chain	Residues	Atoms					ZeroOcc	AltConf	Trace
			Total	C	N	O	S			
1	A	369	2968	1895	502	547	24	0	0	0
1	B	367	2978	1906	500	545	27	0	4	0
1	C	366	2956	1889	498	544	25	0	1	0

There are 30 discrepancies between the modelled and reference sequences:

Chain	Residue	Modelled	Actual	Comment	Reference
A	493	GLY	-	expression tag	UNP Q92769
A	494	SER	-	expression tag	UNP Q92769
A	495	SER	-	expression tag	UNP Q92769
A	496	GLY	-	expression tag	UNP Q92769
A	497	HIS	-	expression tag	UNP Q92769
A	498	HIS	-	expression tag	UNP Q92769
A	499	HIS	-	expression tag	UNP Q92769
A	500	HIS	-	expression tag	UNP Q92769
A	501	HIS	-	expression tag	UNP Q92769
A	502	HIS	-	expression tag	UNP Q92769
B	493	GLY	-	expression tag	UNP Q92769
B	494	SER	-	expression tag	UNP Q92769
B	495	SER	-	expression tag	UNP Q92769
B	496	GLY	-	expression tag	UNP Q92769
B	497	HIS	-	expression tag	UNP Q92769
B	498	HIS	-	expression tag	UNP Q92769
B	499	HIS	-	expression tag	UNP Q92769
B	500	HIS	-	expression tag	UNP Q92769
B	501	HIS	-	expression tag	UNP Q92769
B	502	HIS	-	expression tag	UNP Q92769
C	493	GLY	-	expression tag	UNP Q92769
C	494	SER	-	expression tag	UNP Q92769
C	495	SER	-	expression tag	UNP Q92769

Continued on next page...

Continued from previous page...

Chain	Residue	Modelled	Actual	Comment	Reference
C	496	GLY	-	expression tag	UNP Q92769
C	497	HIS	-	expression tag	UNP Q92769
C	498	HIS	-	expression tag	UNP Q92769
C	499	HIS	-	expression tag	UNP Q92769
C	500	HIS	-	expression tag	UNP Q92769
C	501	HIS	-	expression tag	UNP Q92769
C	502	HIS	-	expression tag	UNP Q92769

- Molecule 2 is ZINC ION (three-letter code: ZN) (formula: Zn).

Mol	Chain	Residues	Atoms	ZeroOcc	AltConf
2	A	1	Total Zn 1 1	0	0
2	B	1	Total Zn 1 1	0	0
2	C	1	Total Zn 1 1	0	0

- Molecule 3 is CALCIUM ION (three-letter code: CA) (formula: Ca).

Mol	Chain	Residues	Atoms	ZeroOcc	AltConf
3	A	1	Total Ca 1 1	0	0
3	B	1	Total Ca 1 1	0	0
3	C	1	Total Ca 1 1	0	0

- Molecule 4 is SODIUM ION (three-letter code: NA) (formula: Na).

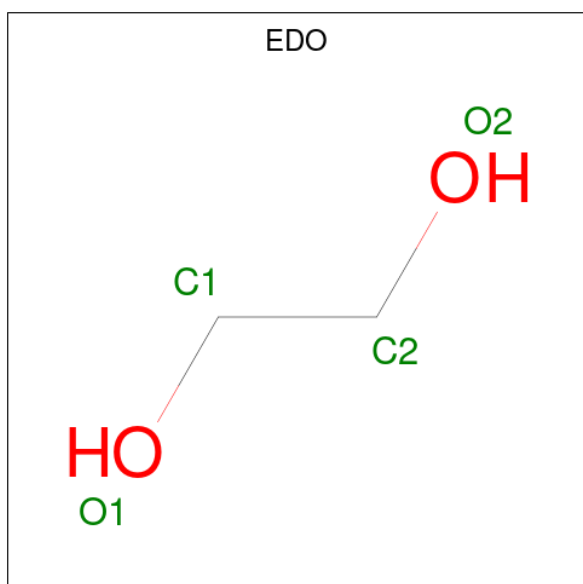
Mol	Chain	Residues	Atoms	ZeroOcc	AltConf
4	A	1	Total Na 1 1	0	0
4	B	1	Total Na 1 1	0	0
4	C	1	Total Na 1 1	0	0

- Molecule 5 is DI(HYDROXYETHYL)ETHER (three-letter code: PEG) (formula: C₄H₁₀O₃).



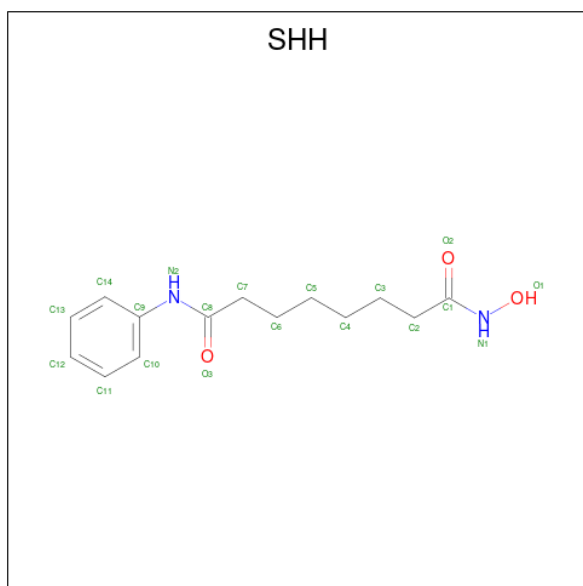
Mol	Chain	Residues	Atoms				ZeroOcc	AltConf
5	A	1	Total	C	H	O	1	0
			17	4	10	3		
5	A	1	Total	C	H	O	1	0
			17	4	10	3		
5	A	1	Total	C	H	O	1	0
			17	4	10	3		
5	B	1	Total	C	H	O	1	0
			17	4	10	3		
5	C	1	Total	C	H	O	1	0
			17	4	10	3		

- Molecule 6 is 1,2-ETHANEDIOL (three-letter code: EDO) (formula: C₂H₆O₂).



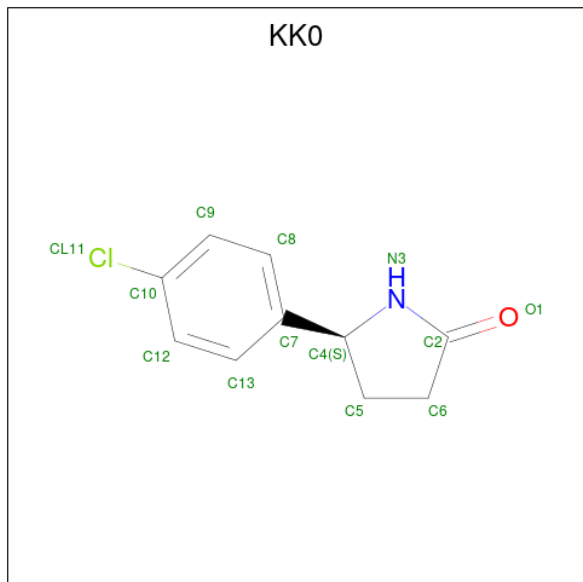
Mol	Chain	Residues	Atoms				ZeroOcc	AltConf
6	A	1	Total	C	H	O	1	0
			10	2	6	2		
6	B	1	Total	C	H	O	1	0
			10	2	6	2		
6	B	1	Total	C	H	O	1	0
			10	2	6	2		
6	B	1	Total	C	H	O	1	0
			10	2	6	2		
6	B	1	Total	C	H	O	1	0
			10	2	6	2		
6	C	1	Total	C	H	O	1	0
			10	2	6	2		
6	C	1	Total	C	H	O	1	0
			10	2	6	2		

- Molecule 7 is OCTANEDIOIC ACID HYDROXYAMIDE PHENYLAMIDE (three-letter code: SHH) (formula: C₁₄H₂₀N₂O₃).



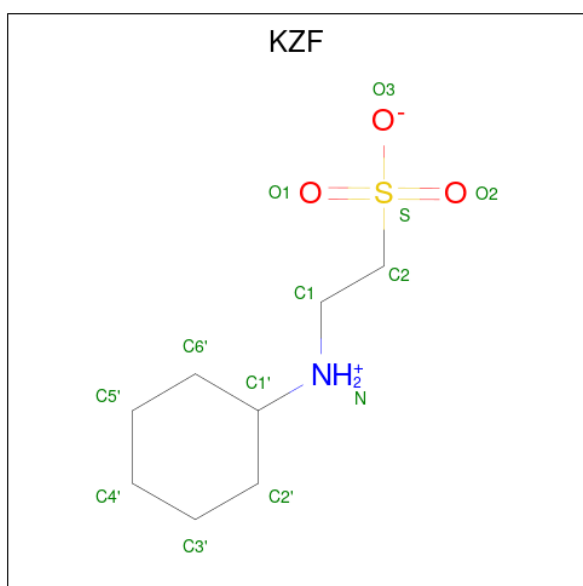
Mol	Chain	Residues	Atoms					ZeroOcc	AltConf
7	A	1	Total	C	H	N	O	1	0
			39	14	20	2	3		
7	B	1	Total	C	H	N	O	1	0
			39	14	20	2	3		
7	C	1	Total	C	H	N	O	1	0
			39	14	20	2	3		

- Molecule 8 is (5 {S})-5-(4-chlorophenyl)pyrrolidin-2-one (three-letter code: KK0) (formula: $C_{10}H_{10}ClNO$) (labeled as "Ligand of Interest" by depositor).



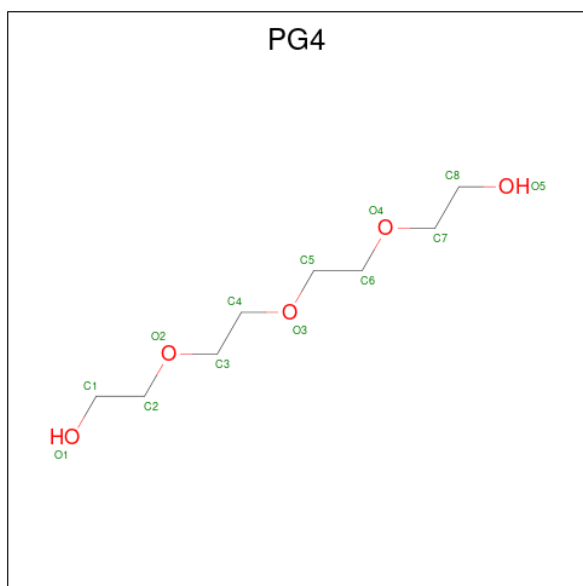
Mol	Chain	Residues	Atoms					ZeroOcc	AltConf	
			Total	C	Cl	H	N			O
8	A	1	Total	C	Cl	H	N	O	0	0
			23	10	1	10	1	1		
8	B	1	Total	C	Cl	H	N	O	0	0
			23	10	1	10	1	1		
8	C	1	Total	C	Cl	H	N	O	0	0
			23	10	1	10	1	1		

- Molecule 9 is 2-(cyclohexylazanumyl)ethanesulfonate (three-letter code: KZF) (formula: $C_8H_{17}NO_3S$).



Mol	Chain	Residues	Atoms					ZeroOcc	AltConf	
			Total	C	H	N	O			S
9	B	1	30	8	17	1	3	1	0	0

- Molecule 10 is TETRAETHYLENE GLYCOL (three-letter code: PG4) (formula: C₈H₁₈O₅).



Mol	Chain	Residues	Atoms				ZeroOcc	AltConf
			Total	C	H	O		
10	B	1	31	8	18	5	1	0

- Molecule 11 is water.

Mol	Chain	Residues	Atoms		ZeroOcc	AltConf
11	A	239	Total	O	0	0
			239	239		
11	B	225	Total	O	0	0
			225	225		
11	C	106	Total	O	0	0
			106	106		

4 Data and refinement statistics

Property	Value	Source
Space group	P 21 21 21	Depositor
Cell constants a, b, c, α , β , γ	92.50Å 98.66Å 139.19Å 90.00° 90.00° 90.00°	Depositor
Resolution (Å)	48.49 – 1.88 48.45 – 1.88	Depositor EDS
% Data completeness (in resolution range)	99.3 (48.49-1.88) 99.3 (48.45-1.88)	Depositor EDS
R_{merge}	(Not available)	Depositor
R_{sym}	(Not available)	Depositor
$\langle I/\sigma(I) \rangle$ ¹	1.60 (at 1.88Å)	Xtriage
Refinement program	REFMAC 5.8.0232	Depositor
R, R_{free}	0.166 , 0.207 0.177 , 0.213	Depositor DCC
R_{free} test set	5136 reflections (4.97%)	wwPDB-VP
Wilson B-factor (Å ²)	31.4	Xtriage
Anisotropy	0.533	Xtriage
Bulk solvent k_{sol} (e/Å ³), B_{sol} (Å ²)	(Not available) , (Not available)	EDS
L-test for twinning ²	$\langle L \rangle = 0.48$, $\langle L^2 \rangle = 0.31$	Xtriage
Estimated twinning fraction	No twinning to report.	Xtriage
F_o, F_c correlation	0.97	EDS
Total number of atoms	9893	wwPDB-VP
Average B, all atoms (Å ²)	44.0	wwPDB-VP

Xtriage's analysis on translational NCS is as follows: *The largest off-origin peak in the Patterson function is 3.71% of the height of the origin peak. No significant pseudotranslation is detected.*

¹Intensities estimated from amplitudes.

²Theoretical values of $\langle |L| \rangle$, $\langle L^2 \rangle$ for acentric reflections are 0.5, 0.333 respectively for untwinned datasets, and 0.375, 0.2 for perfectly twinned datasets.

5 Model quality i

5.1 Standard geometry i

Bond lengths and bond angles in the following residue types are not validated in this section: NA, SHH, ZN, PG4, KZF, KK0, PEG, CA, EDO

The Z score for a bond length (or angle) is the number of standard deviations the observed value is removed from the expected value. A bond length (or angle) with $|Z| > 5$ is considered an outlier worth inspection. RMSZ is the root-mean-square of all Z scores of the bond lengths (or angles).

Mol	Chain	Bond lengths		Bond angles	
		RMSZ	# Z >5	RMSZ	# Z >5
1	A	0.52	0/3045	0.70	1/4110 (0.0%)
1	B	0.53	0/3067	0.74	2/4139 (0.0%)
1	C	0.50	0/3036	0.60	0/4099
All	All	0.52	0/9148	0.68	3/12348 (0.0%)

Chiral center outliers are detected by calculating the chiral volume of a chiral center and verifying if the center is modelled as a planar moiety or with the opposite hand. A planarity outlier is detected by checking planarity of atoms in a peptide group, atoms in a mainchain group or atoms of a sidechain that are expected to be planar.

Mol	Chain	#Chirality outliers	#Planarity outliers
1	A	0	4
1	B	0	3
1	C	0	1
All	All	0	8

There are no bond length outliers.

All (3) bond angle outliers are listed below:

Mol	Chain	Res	Type	Atoms	Z	Observed(°)	Ideal(°)
1	B	47	LEU	N-CA-CB	-7.03	96.34	110.40
1	B	196	ASP	CB-CG-OD1	5.21	122.99	118.30
1	A	238	ASP	CB-CG-OD1	5.05	122.85	118.30

There are no chirality outliers.

All (8) planarity outliers are listed below:

Mol	Chain	Res	Type	Group
1	A	131	ARG	Sidechain

Continued on next page...

Continued from previous page...

Mol	Chain	Res	Type	Group
1	A	39	ARG	Sidechain
1	A	41	ARG	Sidechain
1	A	54	ARG	Sidechain
1	B	275	ARG	Sidechain
1	B	39	ARG	Sidechain
1	B	60	ARG	Sidechain
1	C	39	ARG	Sidechain

5.2 Too-close contacts [i](#)

In the following table, the Non-H and H(model) columns list the number of non-hydrogen atoms and hydrogen atoms in the chain respectively. The H(added) column lists the number of hydrogen atoms added and optimized by MolProbity. The Clashes column lists the number of clashes within the asymmetric unit, whereas Symm-Clashes lists symmetry-related clashes.

Mol	Chain	Non-H	H(model)	H(added)	Clashes	Symm-Clashes
1	A	2968	0	2874	10	0
1	B	2978	0	2902	14	0
1	C	2956	0	2864	9	0
2	A	1	0	0	0	0
2	B	1	0	0	0	0
2	C	1	0	0	0	0
3	A	1	0	0	0	0
3	B	1	0	0	0	0
3	C	1	0	0	0	0
4	A	1	0	0	0	0
4	B	1	0	0	0	0
4	C	1	0	0	0	0
5	A	21	30	30	0	0
5	B	7	10	10	0	0
5	C	7	10	10	0	0
6	A	4	6	6	0	0
6	B	20	30	30	0	0
6	C	8	12	12	0	0
7	A	19	20	19	1	0
7	B	19	20	19	1	0
7	C	19	20	19	1	0
8	A	13	10	0	0	0
8	B	13	10	0	0	0
8	C	13	10	0	0	0
9	B	13	17	0	0	0
10	B	13	18	18	0	0

Continued on next page...

Continued from previous page...

Mol	Chain	Non-H	H(model)	H(added)	Clashes	Symm-Clashes
11	A	239	0	0	3	0
11	B	225	0	0	1	0
11	C	106	0	0	0	0
All	All	9670	223	8813	35	0

The all-atom clashscore is defined as the number of clashes found per 1000 atoms (including hydrogen atoms). The all-atom clashscore for this structure is 2.

All (35) close contacts within the same asymmetric unit are listed below, sorted by their clash magnitude.

Atom-1	Atom-2	Interatomic distance (Å)	Clash overlap (Å)
1:B:245[A]:ILE:HG21	1:B:364[A]:MET:HE3	1.33	1.08
1:B:245[A]:ILE:HG21	1:B:364[A]:MET:CE	1.93	0.98
1:B:241:SER:HB3	1:B:364[B]:MET:SD	2.42	0.59
7:A:607:SHH:H101	7:A:607:SHH:O3	2.02	0.58
1:C:245:ILE:HG22	1:C:368:LYS:HE3	1.84	0.58
1:B:56:MET:HB3	1:B:325:LEU:HD21	1.89	0.55
1:C:56:MET:HB3	1:C:325:LEU:HD21	1.86	0.55
1:C:245:ILE:HG21	1:C:364[A]:MET:HE3	1.86	0.55
1:B:245[A]:ILE:HG21	1:B:364[A]:MET:HE2	1.87	0.53
1:B:60:ARG:HG2	1:B:60:ARG:HH11	1.75	0.52
1:C:245:ILE:HG22	1:C:368:LYS:CE	2.40	0.52
1:B:60:ARG:NH1	1:B:60:ARG:CG	2.72	0.51
1:A:56:MET:HB3	1:A:325:LEU:HD21	1.93	0.50
1:B:60:ARG:HH11	1:B:60:ARG:CG	2.24	0.50
1:A:60:ARG:H	1:B:60:ARG:HH21	1.59	0.49
1:C:45:ASN:OD1	1:C:336:ASN:HB2	2.12	0.49
1:A:148:LYS:NZ	11:A:702:HOH:O	2.47	0.47
1:B:245[B]:ILE:HD11	1:B:364[B]:MET:HB3	1.96	0.47
1:C:322:ALA:HB1	1:C:327:CYS:O	2.15	0.47
1:A:245:ILE:HG12	1:A:364:MET:CE	2.46	0.46
1:A:294:LYS:NZ	1:A:326:ASP:OD1	2.48	0.45
1:B:17[A]:CYS:HB2	1:B:59:TYR:HE2	1.81	0.45
1:A:370:ARG:NH1	11:A:711:HOH:O	2.50	0.45
7:B:610:SHH:O3	7:B:610:SHH:H101	2.16	0.45
1:A:358:GLN:NE2	11:A:701:HOH:O	2.35	0.44
1:A:271:LEU:HD11	1:A:316:CYS:HB2	1.98	0.44
7:C:607:SHH:O3	7:C:607:SHH:H101	2.18	0.43
1:A:373:GLU:HG2	1:A:376:ARG:HH22	1.84	0.43
1:B:94:LYS:HE2	1:B:98:ARG:NH1	2.33	0.43
1:B:143:GLY:HA2	1:B:161:ILE:HD11	2.01	0.41

Continued on next page...

Continued from previous page...

Atom-1	Atom-2	Interatomic distance (Å)	Clash overlap (Å)
1:C:62:HIS:CE1	1:C:124:ALA:HB2	2.56	0.41
1:B:376:ARG:NH1	11:B:712:HOH:O	2.53	0.41
1:C:239:ASP:OD1	1:C:285:GLY:HA3	2.21	0.41
1:A:14:LYS:HB2	1:A:136:MET:CE	2.51	0.41
1:C:271:LEU:HD11	1:C:316:CYS:HB2	2.04	0.40

There are no symmetry-related clashes.

5.3 Torsion angles [i](#)

5.3.1 Protein backbone [i](#)

In the following table, the Percentiles column shows the percent Ramachandran outliers of the chain as a percentile score with respect to all X-ray entries followed by that with respect to entries of similar resolution.

The Analysed column shows the number of residues for which the backbone conformation was analysed, and the total number of residues.

Mol	Chain	Analysed	Favoured	Allowed	Outliers	Percentiles	
1	A	367/498 (74%)	363 (99%)	4 (1%)	0	100	100
1	B	369/498 (74%)	363 (98%)	6 (2%)	0	100	100
1	C	365/498 (73%)	358 (98%)	7 (2%)	0	100	100
All	All	1101/1494 (74%)	1084 (98%)	17 (2%)	0	100	100

There are no Ramachandran outliers to report.

5.3.2 Protein sidechains [i](#)

In the following table, the Percentiles column shows the percent sidechain outliers of the chain as a percentile score with respect to all X-ray entries followed by that with respect to entries of similar resolution.

The Analysed column shows the number of residues for which the sidechain conformation was analysed, and the total number of residues.

Mol	Chain	Analysed	Rotameric	Outliers	Percentiles	
1	A	317/425 (75%)	316 (100%)	1 (0%)	92	92
1	B	321/425 (76%)	317 (99%)	4 (1%)	71	67

Continued on next page...

Continued from previous page...

Mol	Chain	Analysed	Rotameric	Outliers	Percentiles	
1	C	317/425 (75%)	314 (99%)	3 (1%)	78	76
All	All	955/1275 (75%)	947 (99%)	8 (1%)	81	80

All (8) residues with a non-rotameric sidechain are listed below:

Mol	Chain	Res	Type
1	A	145	HIS
1	B	60	ARG
1	B	75	ASP
1	B	145	HIS
1	B	278	CYS
1	C	90	SER
1	C	145	HIS
1	C	326	ASP

Sometimes sidechains can be flipped to improve hydrogen bonding and reduce clashes. All (3) such sidechains are listed below:

Mol	Chain	Res	Type
1	A	358	GLN
1	C	62	HIS
1	C	95	GLN

5.3.3 RNA [i](#)

There are no RNA molecules in this entry.

5.4 Non-standard residues in protein, DNA, RNA chains [i](#)

There are no non-standard protein/DNA/RNA residues in this entry.

5.5 Carbohydrates [i](#)

There are no monosaccharides in this entry.

5.6 Ligand geometry [i](#)

Of 30 ligands modelled in this entry, 9 are monoatomic - leaving 21 for Mogul analysis.

In the following table, the Counts columns list the number of bonds (or angles) for which Mogul statistics could be retrieved, the number of bonds (or angles) that are observed in the model and the number of bonds (or angles) that are defined in the Chemical Component Dictionary. The Link column lists molecule types, if any, to which the group is linked. The Z score for a bond length (or angle) is the number of standard deviations the observed value is removed from the expected value. A bond length (or angle) with $|Z| > 2$ is considered an outlier worth inspection. RMSZ is the root-mean-square of all Z scores of the bond lengths (or angles).

Mol	Type	Chain	Res	Link	Bond lengths			Bond angles		
					Counts	RMSZ	# Z > 2	Counts	RMSZ	# Z > 2
5	PEG	A	608	-	6,6,6	0.39	0	5,5,5	0.30	0
5	PEG	A	606	-	6,6,6	0.48	0	5,5,5	0.47	0
6	EDO	B	612	-	3,3,3	0.47	0	2,2,2	0.38	0
6	EDO	C	604	-	3,3,3	0.43	0	2,2,2	0.38	0
7	SHH	B	610	2	19,19,19	0.74	0	21,22,22	0.82	0
5	PEG	C	606	-	6,6,6	0.50	0	5,5,5	0.24	0
9	KZF	B	604	-	13,13,13	0.59	0	16,17,17	0.56	0
8	KK0	C	608	-	14,14,14	0.29	0	18,19,19	0.49	0
8	KK0	B	613	-	14,14,14	0.30	0	18,19,19	0.88	1 (5%)
6	EDO	B	608	-	3,3,3	0.42	0	2,2,2	0.33	0
5	PEG	A	604	-	6,6,6	0.40	0	5,5,5	0.30	0
6	EDO	B	605	-	3,3,3	0.42	0	2,2,2	0.35	0
6	EDO	B	611	-	3,3,3	0.49	0	2,2,2	0.29	0
5	PEG	B	609	-	6,6,6	0.45	0	5,5,5	0.28	0
8	KK0	A	609	-	14,14,14	0.32	0	18,19,19	0.68	1 (5%)
6	EDO	B	606	-	3,3,3	0.44	0	2,2,2	0.36	0
6	EDO	A	605	-	3,3,3	0.50	0	2,2,2	0.26	0
10	PG4	B	607	-	12,12,12	0.54	0	11,11,11	0.24	0
7	SHH	C	607	2	19,19,19	0.64	0	21,22,22	0.95	1 (4%)
6	EDO	C	605	-	3,3,3	0.47	0	2,2,2	0.20	0
7	SHH	A	607	2	19,19,19	0.80	0	21,22,22	1.00	1 (4%)

In the following table, the Chirals column lists the number of chiral outliers, the number of chiral centers analysed, the number of these observed in the model and the number defined in the Chemical Component Dictionary. Similar counts are reported in the Torsion and Rings columns. '-' means no outliers of that kind were identified.

Mol	Type	Chain	Res	Link	Chirals	Torsions	Rings
5	PEG	A	608	-	-	1/4/4/4	-
5	PEG	A	606	-	-	3/4/4/4	-
6	EDO	B	612	-	-	1/1/1/1	-
6	EDO	C	604	-	-	0/1/1/1	-
7	SHH	B	610	2	-	2/15/15/15	0/1/1/1
5	PEG	C	606	-	-	0/4/4/4	-

Continued on next page...

Continued from previous page...

Mol	Type	Chain	Res	Link	Chirals	Torsions	Rings
9	KZF	B	604	-	-	3/7/15/15	0/1/1/1
8	KK0	C	608	-	-	0/4/13/13	0/2/2/2
8	KK0	B	613	-	-	0/4/13/13	0/2/2/2
6	EDO	B	608	-	-	0/1/1/1	-
5	PEG	A	604	-	-	1/4/4/4	-
6	EDO	B	605	-	-	1/1/1/1	-
6	EDO	B	611	-	-	0/1/1/1	-
5	PEG	B	609	-	-	1/4/4/4	-
8	KK0	A	609	-	-	0/4/13/13	0/2/2/2
6	EDO	B	606	-	-	1/1/1/1	-
6	EDO	A	605	-	-	0/1/1/1	-
10	PG4	B	607	-	-	1/10/10/10	-
7	SHH	C	607	2	-	3/15/15/15	0/1/1/1
6	EDO	C	605	-	-	0/1/1/1	-
7	SHH	A	607	2	-	2/15/15/15	0/1/1/1

There are no bond length outliers.

All (4) bond angle outliers are listed below:

Mol	Chain	Res	Type	Atoms	Z	Observed(°)	Ideal(°)
8	B	613	KK0	C7-C4-N3	-3.28	109.09	112.84
8	A	609	KK0	C7-C4-N3	-2.47	110.02	112.84
7	C	607	SHH	O1-N1-C1	2.13	122.93	119.79
7	A	607	SHH	C7-C8-N2	2.12	118.33	114.59

There are no chirality outliers.

All (20) torsion outliers are listed below:

Mol	Chain	Res	Type	Atoms
6	B	605	EDO	O1-C1-C2-O2
6	B	606	EDO	O1-C1-C2-O2
5	A	606	PEG	O1-C1-C2-O2
5	A	604	PEG	O1-C1-C2-O2
5	A	606	PEG	C4-C3-O2-C2
9	B	604	KZF	C1-C2-S-O3
9	B	604	KZF	C1-C2-S-O1
9	B	604	KZF	C1-C2-S-O2
5	B	609	PEG	C1-C2-O2-C3
5	A	606	PEG	O2-C3-C4-O4
5	A	608	PEG	O2-C3-C4-O4

Continued on next page...

Continued from previous page...

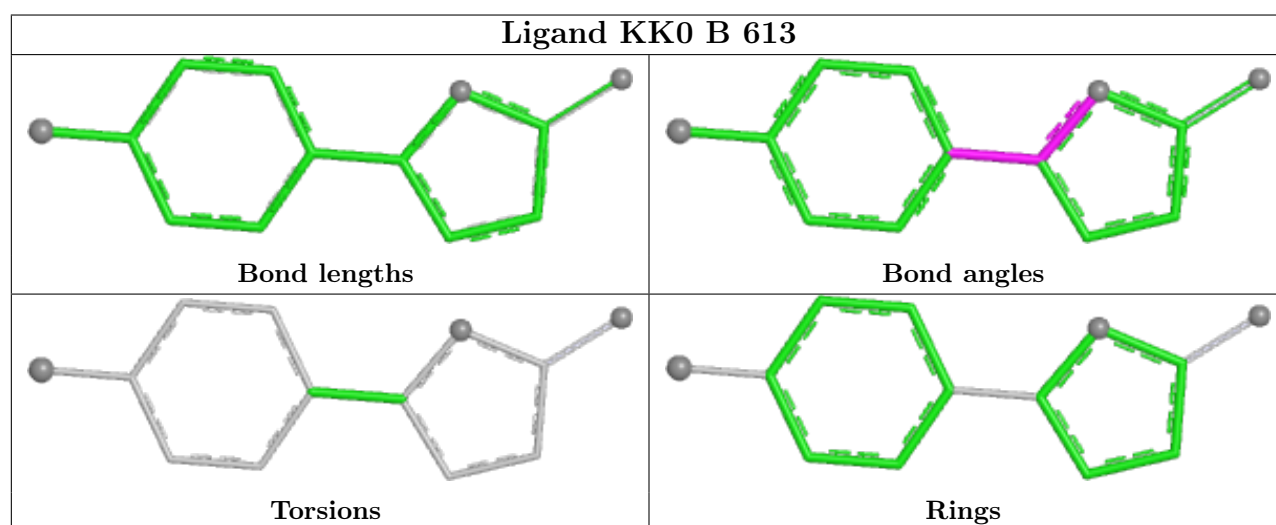
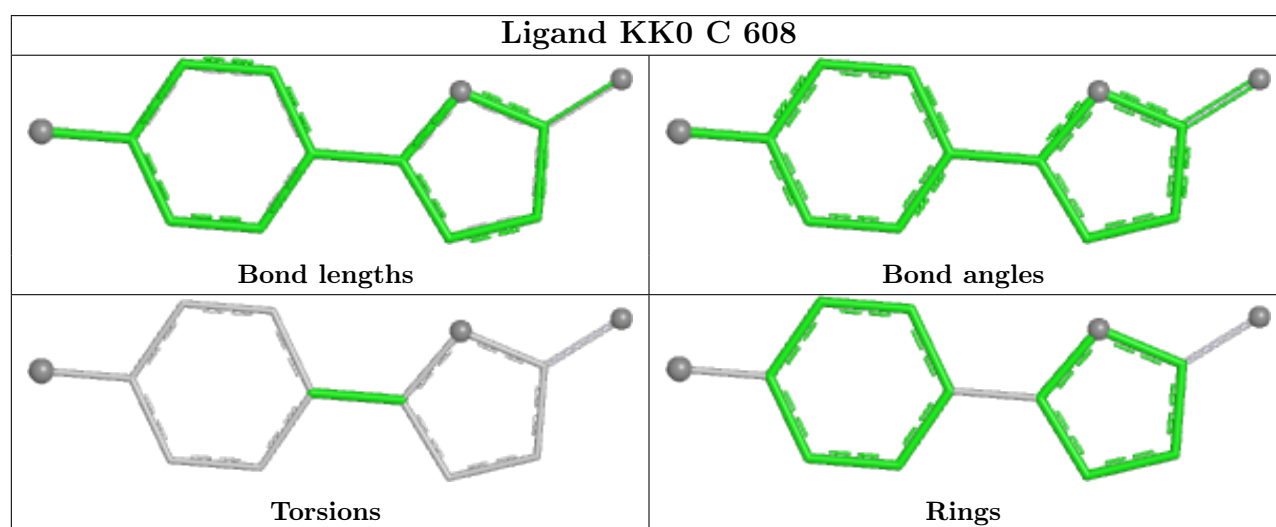
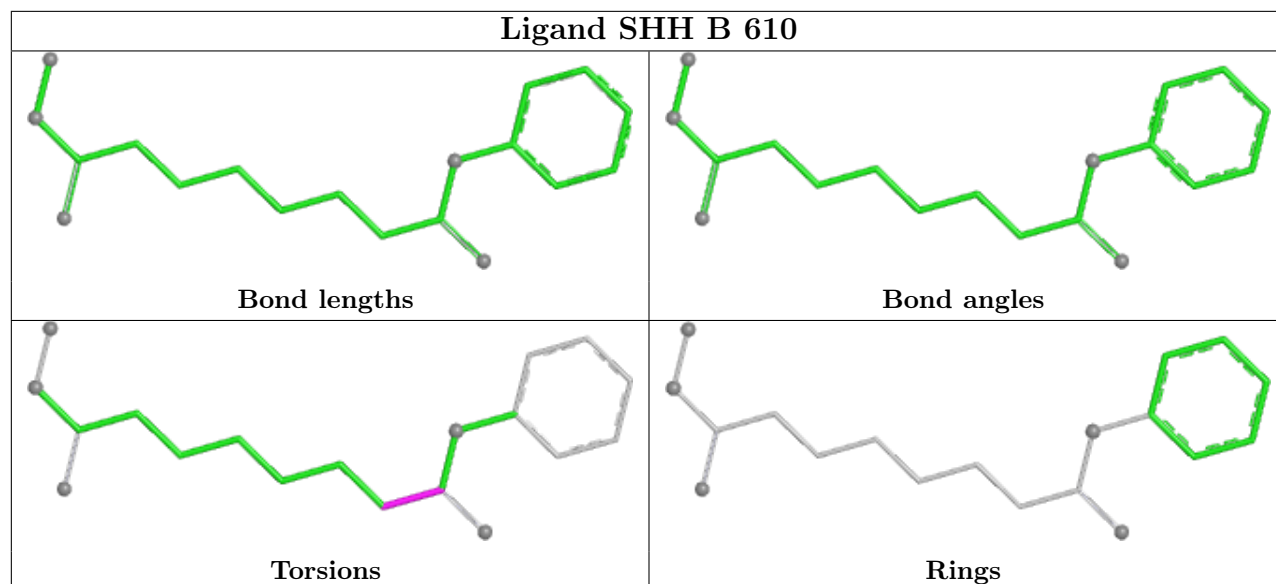
Mol	Chain	Res	Type	Atoms
7	A	607	SHH	C6-C7-C8-O3
7	B	610	SHH	C6-C7-C8-O3
7	C	607	SHH	C5-C6-C7-C8
7	C	607	SHH	C6-C7-C8-O3
7	B	610	SHH	C6-C7-C8-N2
7	A	607	SHH	C6-C7-C8-N2
6	B	612	EDO	O1-C1-C2-O2
7	C	607	SHH	C6-C7-C8-N2
10	B	607	PG4	O2-C3-C4-O3

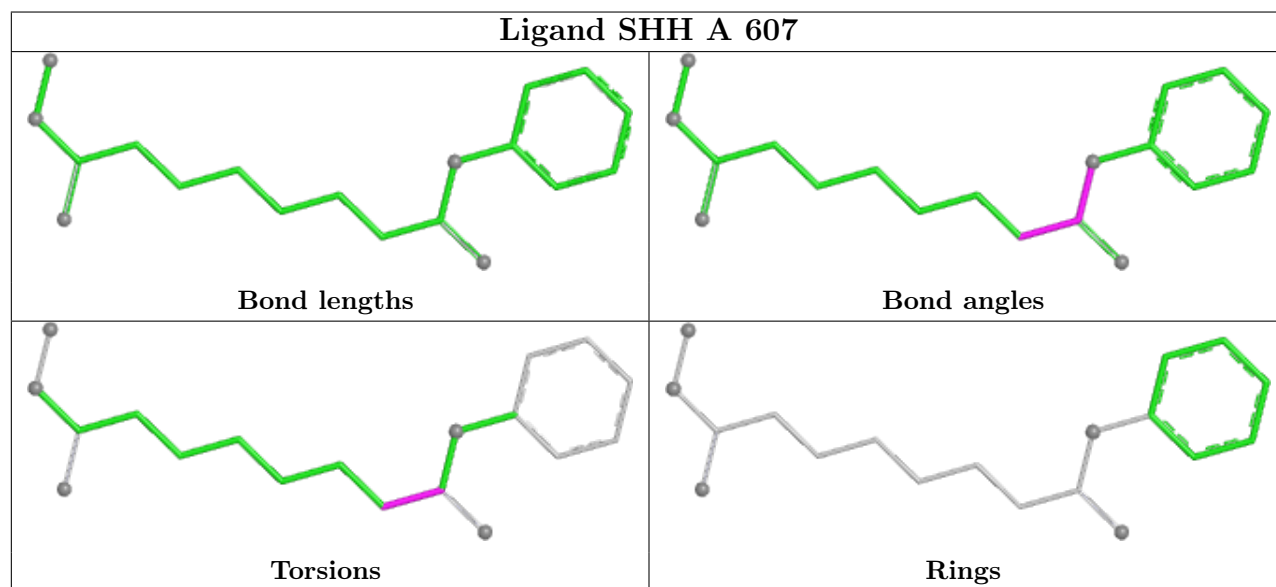
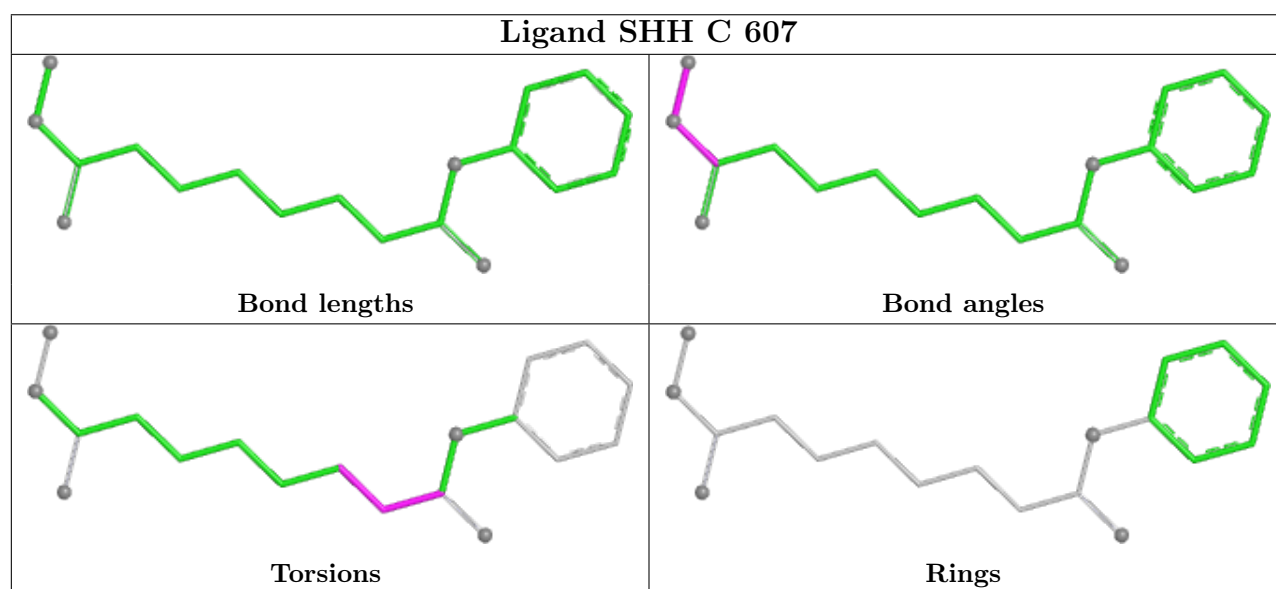
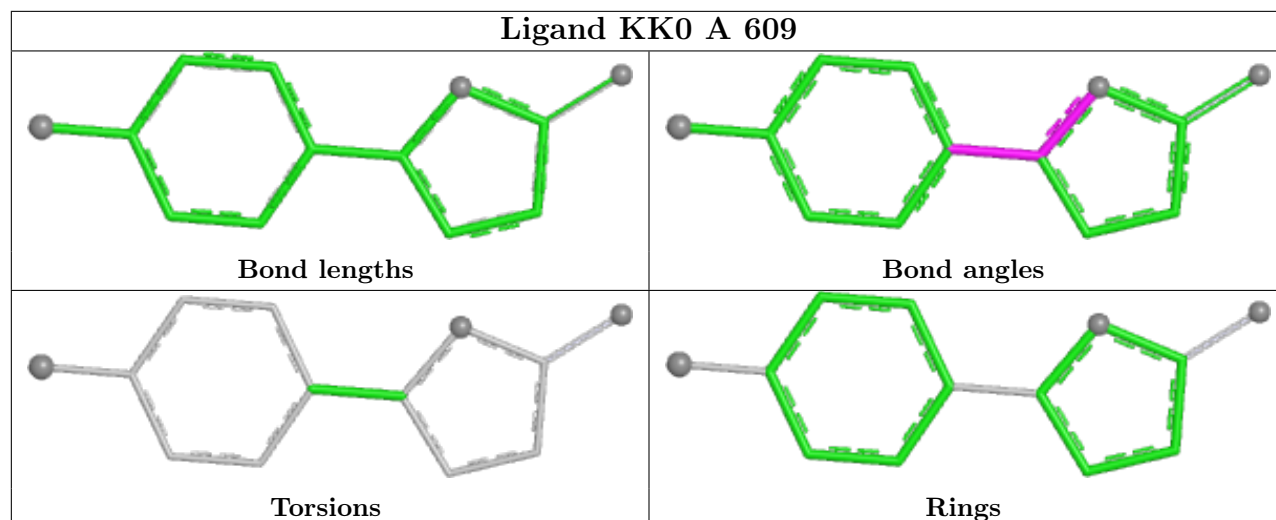
There are no ring outliers.

3 monomers are involved in 3 short contacts:

Mol	Chain	Res	Type	Clashes	Symm-Clashes
7	B	610	SHH	1	0
7	C	607	SHH	1	0
7	A	607	SHH	1	0

The following is a two-dimensional graphical depiction of Mogul quality analysis of bond lengths, bond angles, torsion angles, and ring geometry for all instances of the Ligand of Interest. In addition, ligands with molecular weight > 250 and outliers as shown on the validation Tables will also be included. For torsion angles, if less than 5% of the Mogul distribution of torsion angles is within 10 degrees of the torsion angle in question, then that torsion angle is considered an outlier. Any bond that is central to one or more torsion angles identified as an outlier by Mogul will be highlighted in the graph. For rings, the root-mean-square deviation (RMSD) between the ring in question and similar rings identified by Mogul is calculated over all ring torsion angles. If the average RMSD is greater than 60 degrees and the minimal RMSD between the ring in question and any Mogul-identified rings is also greater than 60 degrees, then that ring is considered an outlier. The outliers are highlighted in purple. The color gray indicates Mogul did not find sufficient equivalents in the CSD to analyse the geometry.





5.7 Other polymers [i](#)

There are no such residues in this entry.

5.8 Polymer linkage issues [i](#)

There are no chain breaks in this entry.

6 Fit of model and data

6.1 Protein, DNA and RNA chains

In the following table, the column labelled ‘#RSRZ > 2’ contains the number (and percentage) of RSRZ outliers, followed by percent RSRZ outliers for the chain as percentile scores relative to all X-ray entries and entries of similar resolution. The OWAB column contains the minimum, median, 95th percentile and maximum values of the occupancy-weighted average B-factor per residue. The column labelled ‘Q < 0.9’ lists the number of (and percentage) of residues with an average occupancy less than 0.9.

Mol	Chain	Analysed	<RSRZ>	#RSRZ>2	OWAB(Å ²)	Q<0.9
1	A	369/498 (74%)	0.19	6 (1%) 72 74	24, 34, 55, 72	0
1	B	367/498 (73%)	0.11	2 (0%) 91 91	23, 34, 58, 75	0
1	C	366/498 (73%)	1.32	101 (27%) 0 0	36, 54, 78, 93	0
All	All	1102/1494 (73%)	0.54	109 (9%) 7 8	23, 40, 71, 93	0

All (109) RSRZ outliers are listed below:

Mol	Chain	Res	Type	RSRZ
1	C	341	TYR	6.6
1	C	52	LEU	6.5
1	C	352	PRO	5.1
1	C	345	ASP	5.0
1	C	378	LEU	4.9
1	C	245	ILE	4.8
1	C	344	PRO	4.8
1	C	339	PHE	4.7
1	C	293	VAL	4.6
1	C	296	PHE	4.4
1	C	272	SER	4.4
1	C	32	GLY	4.3
1	C	92	TYR	4.3
1	C	343	GLY	4.3
1	C	372	PHE	4.2
1	C	54	ARG	4.0
1	C	379	PRO	4.0
1	C	250	ILE	3.9
1	C	56	MET	3.9
1	C	297	ASN	3.9
1	C	295	THR	3.8
1	C	51	GLY	3.8
1	C	273	GLY	3.8

Continued on next page...

Continued from previous page...

Mol	Chain	Res	Type	RSRZ
1	C	171	TYR	3.8
1	C	16	VAL	3.8
1	C	15	LYS	3.7
1	C	354	ASN	3.7
1	C	338	TYR	3.6
1	C	310	ILE	3.6
1	C	133	GLN	3.6
1	C	48	LEU	3.6
1	C	328	GLU	3.6
1	C	311	ARG	3.6
1	C	249	ILE	3.6
1	C	132	GLN	3.5
1	C	350	ILE	3.4
1	C	298	LEU	3.4
1	C	376	ARG	3.3
1	A	216	LEU	3.3
1	C	91	GLU	3.2
1	C	280	ASN	3.2
1	C	55	LYS	3.1
1	C	108	PHE	3.0
1	C	90	SER	3.0
1	C	291	GLU	2.9
1	C	114	PHE	2.9
1	C	240	GLU	2.9
1	C	247	LYS	2.9
1	C	319	TYR	2.9
1	C	292	VAL	2.9
1	C	335	TYR	2.9
1	C	17	CYS	2.9
1	C	36	LYS	2.8
1	C	248	PRO	2.8
1	C	299	PRO	2.8
1	C	309	THR	2.8
1	C	353	SER	2.8
1	C	251	SER	2.8
1	C	45	ASN	2.8
1	C	253	VAL	2.8
1	C	342	PHE	2.7
1	C	300	LEU	2.7
1	C	329	ILE	2.7
1	C	275	ARG	2.6
1	C	14	LYS	2.6

Continued on next page...

Continued from previous page...

Mol	Chain	Res	Type	RSRZ
1	C	185	GLY	2.6
1	C	346	PHE	2.6
1	C	326	ASP	2.6
1	B	47	LEU	2.5
1	C	31	GLN	2.5
1	A	367	ILE	2.5
1	C	244	GLN	2.5
1	A	171	TYR	2.5
1	C	50	TYR	2.5
1	C	242	TYR	2.5
1	C	366	LYS	2.5
1	C	28	TYR	2.3
1	C	318	THR	2.3
1	C	254	MET	2.3
1	C	25	GLY	2.3
1	C	321	THR	2.3
1	C	238	ASP	2.3
1	A	231	PHE	2.3
1	A	219	ILE	2.3
1	C	351	SER	2.3
1	C	356	THR	2.3
1	C	308	TYR	2.2
1	C	155	PHE	2.2
1	C	62	HIS	2.2
1	C	325	LEU	2.2
1	C	289	CYS	2.2
1	C	140	TRP	2.2
1	C	241	SER	2.2
1	C	27	TYR	2.2
1	C	314	ALA	2.2
1	C	134	THR	2.2
1	C	63	LYS	2.1
1	C	294	LYS	2.1
1	C	87	ASP	2.1
1	C	173	GLN	2.1
1	C	373	GLU	2.1
1	C	47	LEU	2.1
1	C	33	HIS	2.1
1	C	377	MET	2.1
1	A	372	PHE	2.1
1	B	322	ALA	2.1
1	C	330	PRO	2.1

Continued on next page...

Continued from previous page...

Mol	Chain	Res	Type	RSRZ
1	C	44	HIS	2.0
1	C	370	ARG	2.0

6.2 Non-standard residues in protein, DNA, RNA chains [i](#)

There are no non-standard protein/DNA/RNA residues in this entry.

6.3 Carbohydrates [i](#)

There are no monosaccharides in this entry.

6.4 Ligands [i](#)

In the following table, the Atoms column lists the number of modelled atoms in the group and the number defined in the chemical component dictionary. The B-factors column lists the minimum, median, 95th percentile and maximum values of B factors of atoms in the group. The column labelled 'Q<0.9' lists the number of atoms with occupancy less than 0.9.

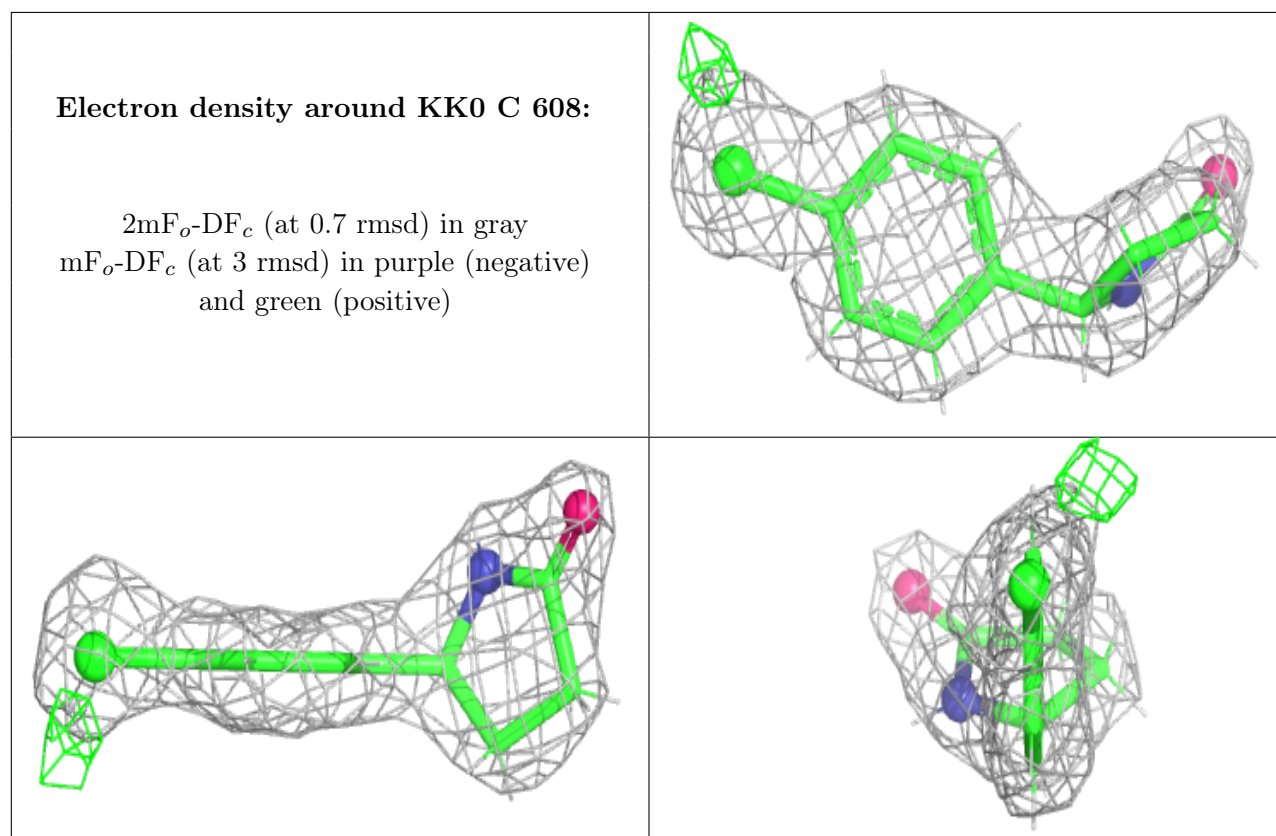
Mol	Type	Chain	Res	Atoms	RSCC	RSR	B-factors(Å ²)	Q<0.9
6	EDO	A	605	4/4	0.56	0.19	53,68,71,74	1
6	EDO	B	606	4/4	0.68	0.16	53,69,75,78	1
6	EDO	B	611	4/4	0.69	0.27	53,61,63,66	1
6	EDO	B	612	4/4	0.76	0.15	53,69,70,72	1
5	PEG	A	604	7/7	0.78	0.28	53,82,89,92	1
6	EDO	C	605	4/4	0.78	0.21	53,64,71,84	1
5	PEG	A	606	7/7	0.79	0.15	47,54,58,60	1
5	PEG	B	609	7/7	0.82	0.12	53,67,76,78	1
6	EDO	C	604	4/4	0.85	0.21	53,69,72,74	1
6	EDO	B	608	4/4	0.86	0.10	53,58,62,64	1
9	KZF	B	604	13/13	0.86	0.22	47,52,61,73	0
10	PG4	B	607	13/13	0.86	0.16	40,55,66,69	1
5	PEG	C	606	7/7	0.87	0.17	53,59,61,61	1
5	PEG	A	608	7/7	0.91	0.15	46,52,60,64	1
8	KK0	C	608	13/13	0.93	0.14	29,37,43,48	23
6	EDO	B	605	4/4	0.93	0.09	52,55,60,63	1
7	SHH	B	610	19/19	0.93	0.14	28,41,58,61	1
8	KK0	B	613	13/13	0.95	0.12	20,24,26,37	23
7	SHH	A	607	19/19	0.95	0.15	24,42,54,57	1
7	SHH	C	607	19/19	0.95	0.24	40,61,79,82	1
8	KK0	A	609	13/13	0.95	0.11	23,28,33,42	0

Continued on next page...

Continued from previous page...

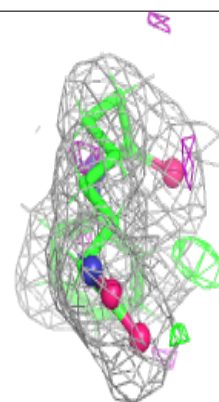
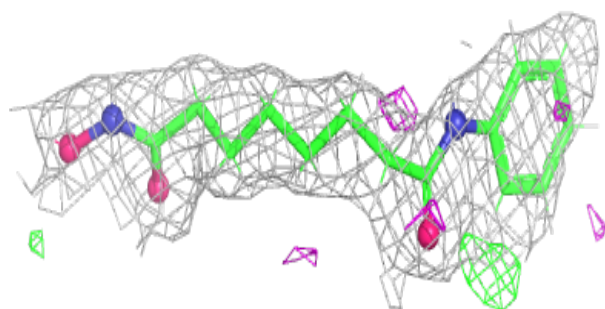
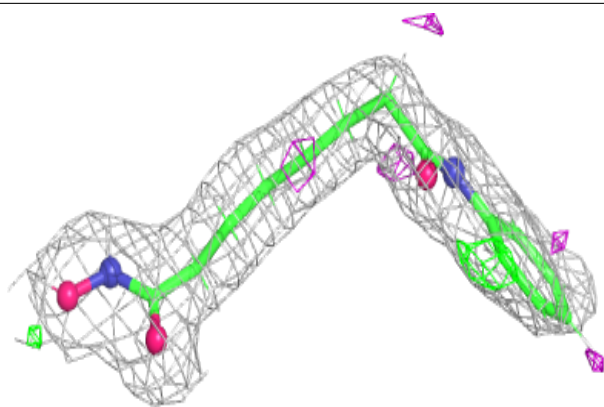
Mol	Type	Chain	Res	Atoms	RSCC	RSR	B-factors(\AA^2)	Q<0.9
4	NA	C	603	1/1	0.97	0.11	40,40,40,40	0
4	NA	A	603	1/1	0.97	0.07	34,34,34,34	0
3	CA	A	602	1/1	0.99	0.07	37,37,37,37	0
4	NA	B	603	1/1	0.99	0.08	37,37,37,37	0
3	CA	B	602	1/1	0.99	0.06	40,40,40,40	0
3	CA	C	602	1/1	0.99	0.15	55,55,55,55	0
2	ZN	A	601	1/1	1.00	0.14	25,25,25,25	0
2	ZN	B	601	1/1	1.00	0.11	24,24,24,24	0
2	ZN	C	601	1/1	1.00	0.04	41,41,41,41	0

The following is a graphical depiction of the model fit to experimental electron density of all instances of the Ligand of Interest. In addition, ligands with molecular weight > 250 and outliers as shown on the geometry validation Tables will also be included. Each fit is shown from different orientation to approximate a three-dimensional view.

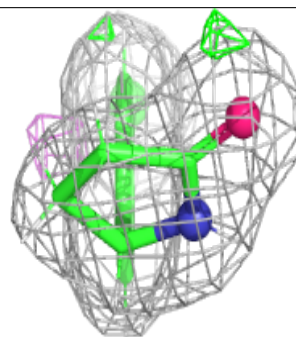
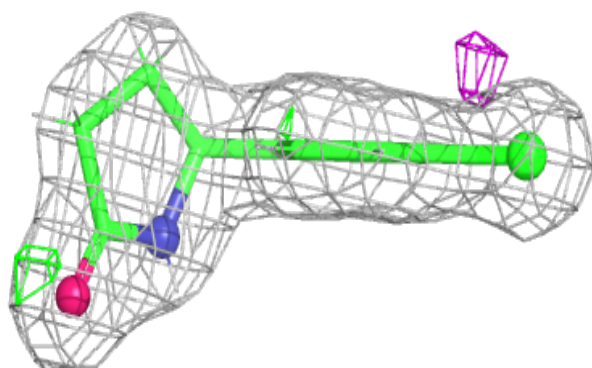
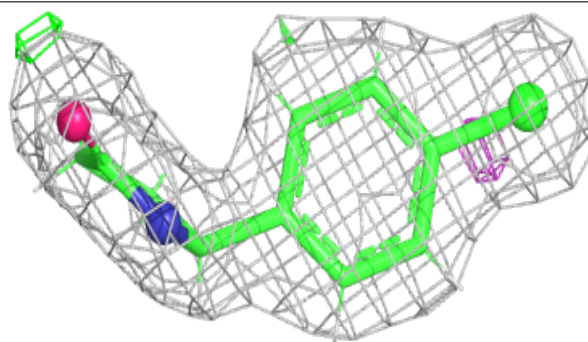


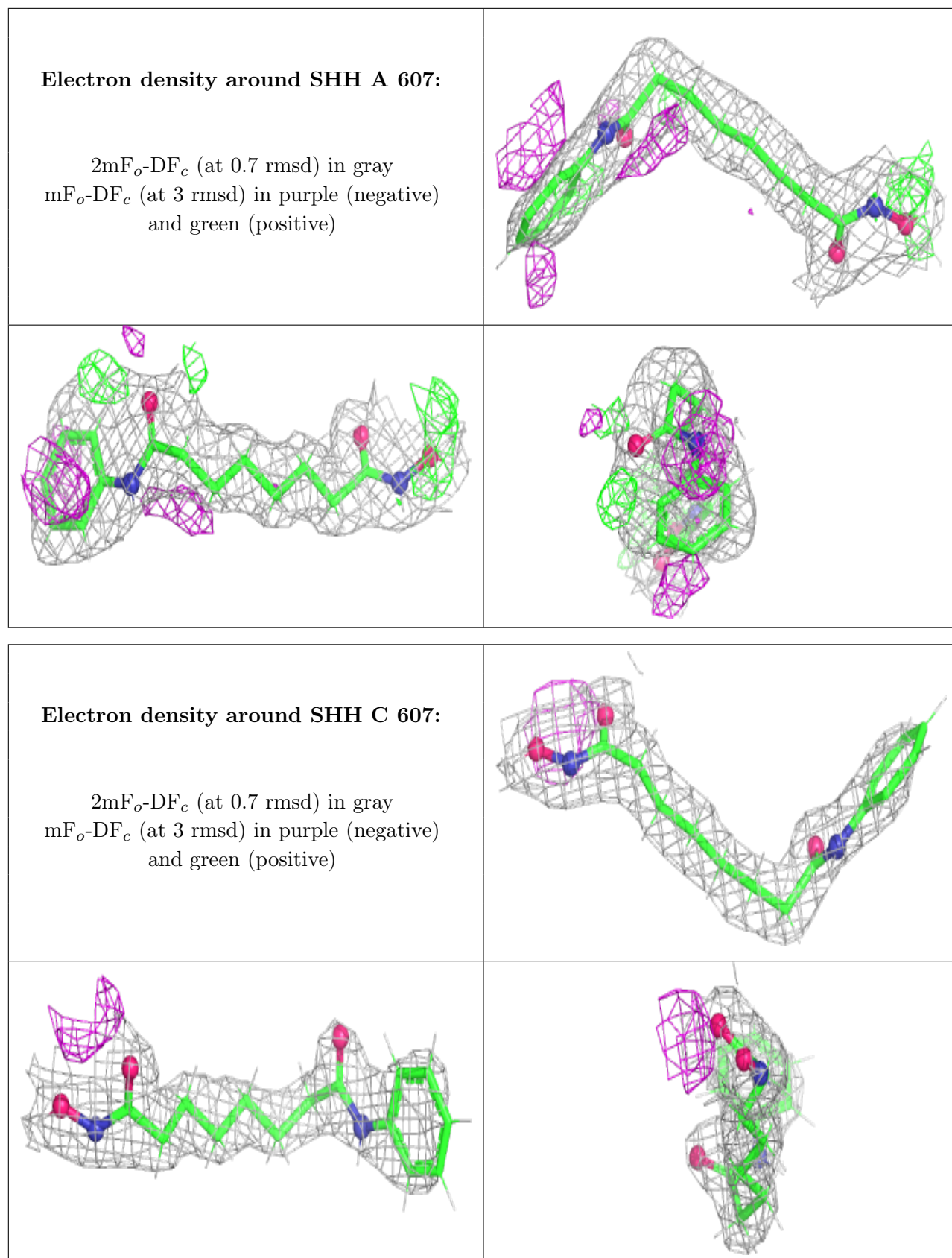
Electron density around SHH B 610:

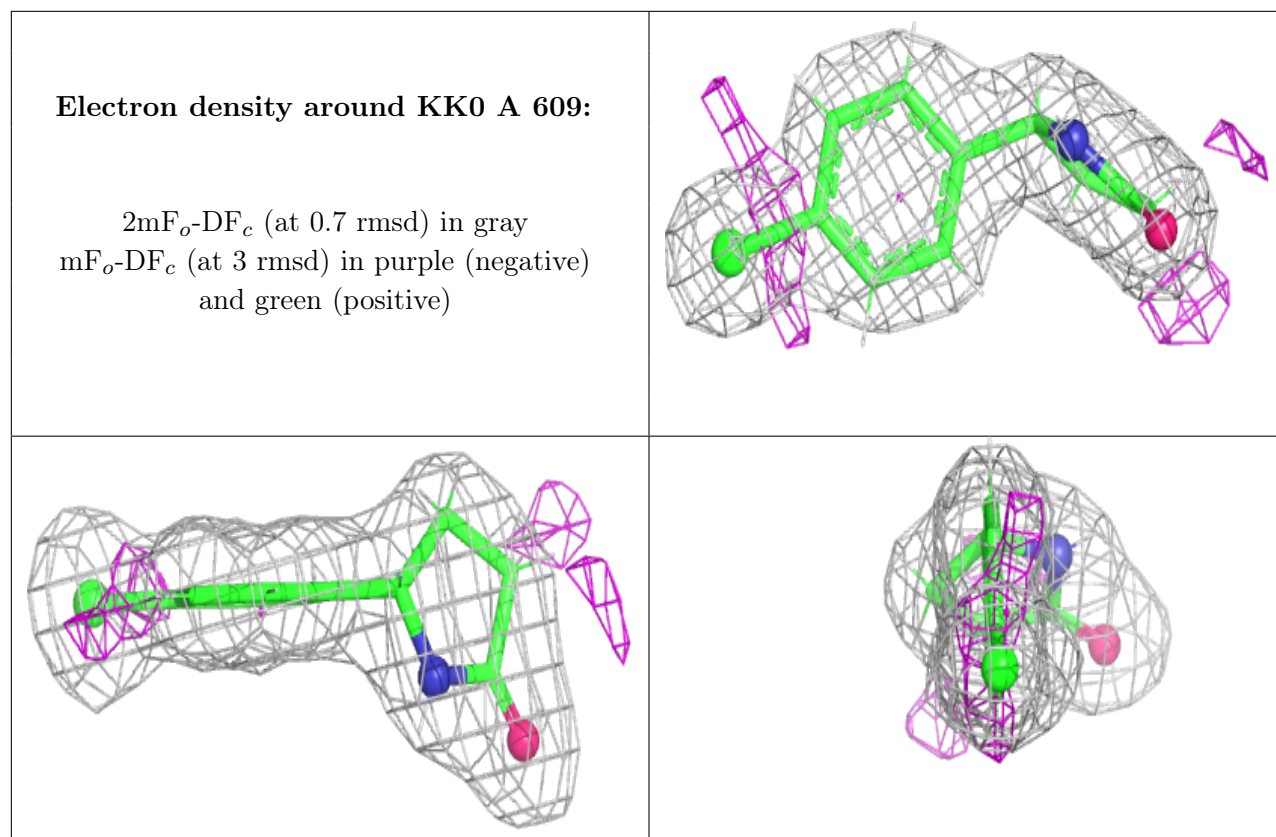
$2mF_o-DF_c$ (at 0.7 rmsd) in gray
 mF_o-DF_c (at 3 rmsd) in purple (negative)
and green (positive)

**Electron density around KK0 B 613:**

$2mF_o-DF_c$ (at 0.7 rmsd) in gray
 mF_o-DF_c (at 3 rmsd) in purple (negative)
and green (positive)







6.5 Other polymers [i](#)

There are no such residues in this entry.