



Full wwPDB X-ray Structure Validation Report ⓘ

Mar 9, 2026 – 10:47 AM UTC

PDB ID : 1GGE / pdb_00001gge
Title : CRYSTAL STRUCTURE OF CATALASE HP11 FROM ESCHERICHIA COLI, NATIVE STRUCTURE AT 1.9 Å RESOLUTION.
Authors : Melik-Adamyan, W.R.; Bravo, J.; Carpena, X.; Switala, J.; Mate, M.J.; Fita, I.; Loewen, P.C.
Deposited on : 2000-08-16
Resolution : 1.89 Å(reported)

This is a Full wwPDB X-ray Structure Validation Report for a publicly released PDB entry.

We welcome your comments at validation@mail.wwpdb.org

A user guide is available at

<https://www.wwpdb.org/validation/2017/XrayValidationReportHelp>

with specific help available everywhere you see the ⓘ symbol.

The types of validation reports are described at

<http://www.wwpdb.org/validation/2017/FAQs#types>.

The following versions of software and data (see [references ⓘ](#)) were used in the production of this report:

MolProbity	:	4-5-2 with Phenix2.0
Mogul	:	2022.3.0, CSD as543be (2022)
Xtriage (Phenix)	:	2.0
EDS	:	3.0
Buster-report	:	wwPDB partial adaption of 1.1.7 (2018)
Percentile statistics	:	20250101.v01 (using entries in the PDB archive January 1st 2025)
CCP4	:	9.0.010 (Gargrove)
Density-Fitness	:	1.0.12
Ideal geometry (proteins)	:	Engh & Huber (2001)
Ideal geometry (DNA, RNA)	:	Parkinson et al. (1996)
Validation Pipeline (wwPDB-VP)	:	2.49

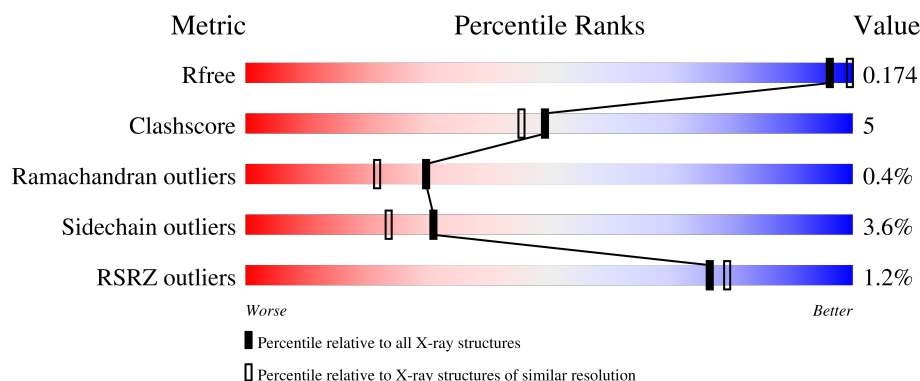
1 Overall quality at a glance

The following experimental techniques were used to determine the structure:

X-RAY DIFFRACTION

The reported resolution of this entry is 1.89 Å.

Percentile scores (ranging between 0-100) for global validation metrics of the entry are shown in the following graphic. The table shows the number of entries on which the scores are based.



Metric	Whole archive (#Entries)	Similar resolution (#Entries, resolution range(Å))
R_{free}	180053	7789 (1.90-1.90)
Clashscore	190562	8410 (1.90-1.90)
Ramachandran outliers	187476	8333 (1.90-1.90)
Sidechain outliers	187428	8333 (1.90-1.90)
RSRZ outliers	180081	7790 (1.90-1.90)

The table below summarises the geometric issues observed across the polymeric chains and their fit to the electron density. The red, orange, yellow and green segments of the lower bar indicate the fraction of residues that contain outliers for ≥ 3 , 2, 1 and 0 types of geometric quality criteria respectively. A grey segment represents the fraction of residues that are not modelled. The numeric value for each fraction is indicated below the corresponding segment, with a dot representing fractions $\leq 5\%$. The upper red bar (where present) indicates the fraction of residues that have poor fit to the electron density. The numeric value is given above the bar.

Mol	Chain	Length	Quality of chain
1	A	753	<div> <div>2%</div> <div>82%</div> <div>13%</div> <div>..</div> </div>
1	B	753	<div> <div>%</div> <div>80%</div> <div>14%</div> <div>..</div> </div>
1	C	753	<div> <div>%</div> <div>79%</div> <div>14%</div> <div>..</div> </div>
1	D	753	<div> <div>%</div> <div>78%</div> <div>15%</div> <div>...</div> </div>

2 Entry composition ⓘ

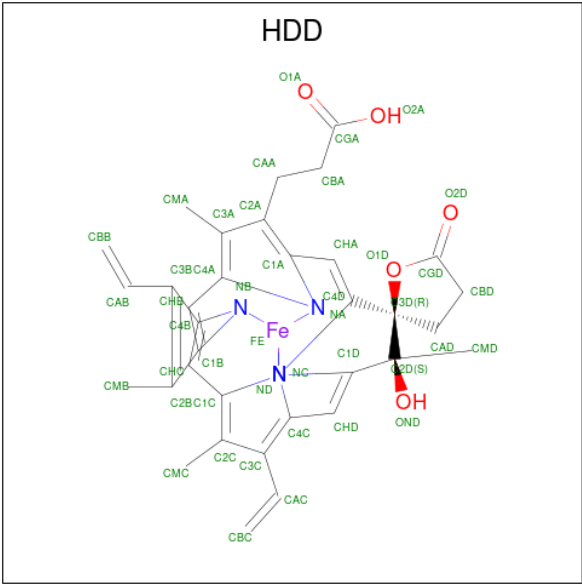
There are 3 unique types of molecules in this entry. The entry contains 26368 atoms, of which 0 are hydrogens and 0 are deuteriums.

In the tables below, the ZeroOcc column contains the number of atoms modelled with zero occupancy, the AltConf column contains the number of residues with at least one atom in alternate conformation and the Trace column contains the number of residues modelled with at most 2 atoms.

- Molecule 1 is a protein called PROTEIN (CATALASE HP1I).

Mol	Chain	Residues	Atoms					ZeroOcc	AltConf	Trace
1	A	727	Total	C	N	O	S	0	0	0
			5746	3647	1005	1082	12			
1	B	727	Total	C	N	O	S	0	0	0
			5746	3647	1005	1082	12			
1	C	727	Total	C	N	O	S	0	0	0
			5746	3647	1005	1082	12			
1	D	727	Total	C	N	O	S	0	0	0
			5746	3647	1005	1082	12			

- Molecule 2 is CIS-HEME D HYDROXYCHLORIN GAMMA-SPIROLACTONE (CCD ID: HDD) (formula: C₃₄H₃₂FeN₄O₅).



Mol	Chain	Residues	Atoms					ZeroOcc	AltConf
2	A	1	Total	C	Fe	N	O	0	0
			44	34	1	4	5		
2	B	1	Total	C	Fe	N	O	0	0
			44	34	1	4	5		

Continued on next page...

Continued from previous page...

Mol	Chain	Residues	Atoms					ZeroOcc	AltConf
2	C	1	Total	C	Fe	N	O	0	0
			44	34	1	4	5		
2	D	1	Total	C	Fe	N	O	0	0
			44	34	1	4	5		

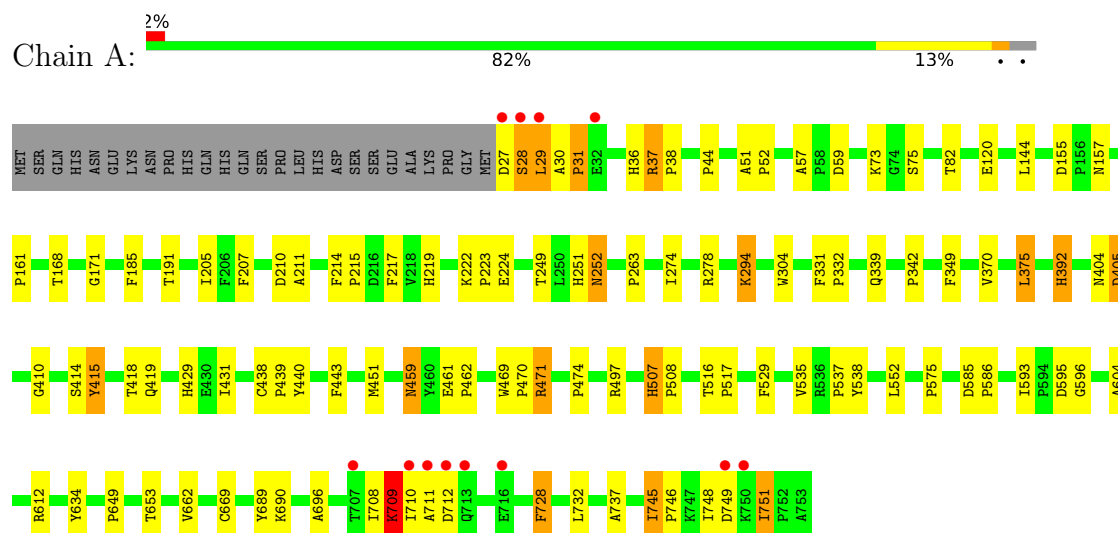
- Molecule 3 is water.

Mol	Chain	Residues	Atoms		ZeroOcc	AltConf
3	A	843	Total	O	0	0
			843	843		
3	B	735	Total	O	0	0
			735	735		
3	C	791	Total	O	0	0
			791	791		
3	D	839	Total	O	0	0
			839	839		

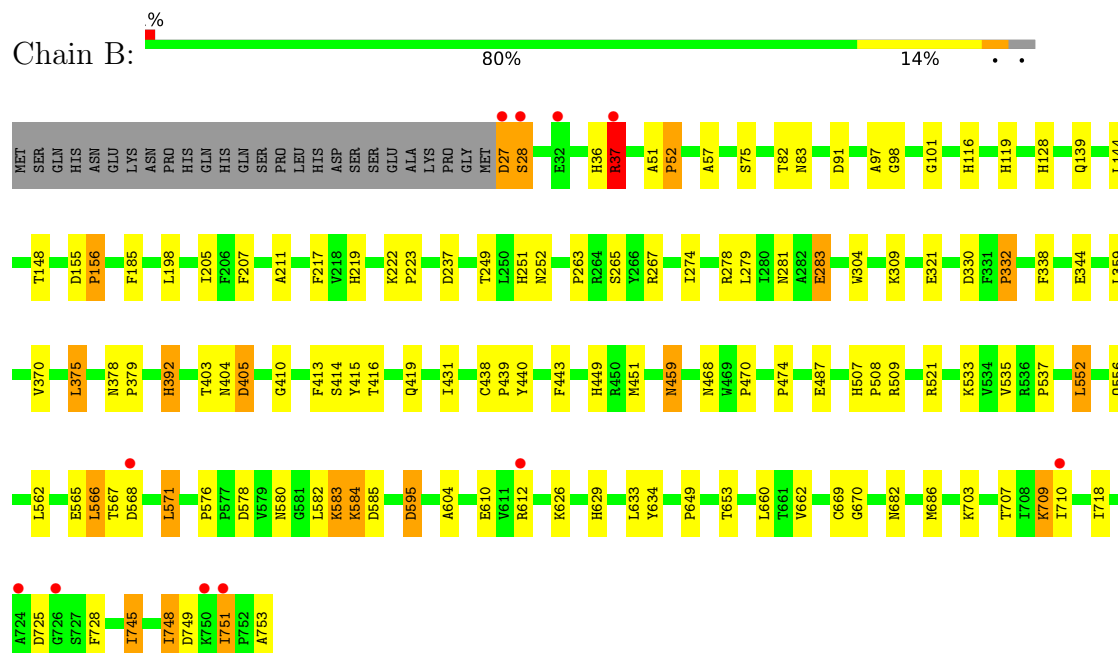
3 Residue-property plots

These plots are drawn for all protein, RNA, DNA and oligosaccharide chains in the entry. The first graphic for a chain summarises the proportions of the various outlier classes displayed in the second graphic. The second graphic shows the sequence view annotated by issues in geometry and electron density. Residues are color-coded according to the number of geometric quality criteria for which they contain at least one outlier: green = 0, yellow = 1, orange = 2 and red = 3 or more. A red dot above a residue indicates a poor fit to the electron density ($RSRZ > 2$). Stretches of 2 or more consecutive residues without any outlier are shown as a green connector. Residues present in the sample, but not in the model, are shown in grey.

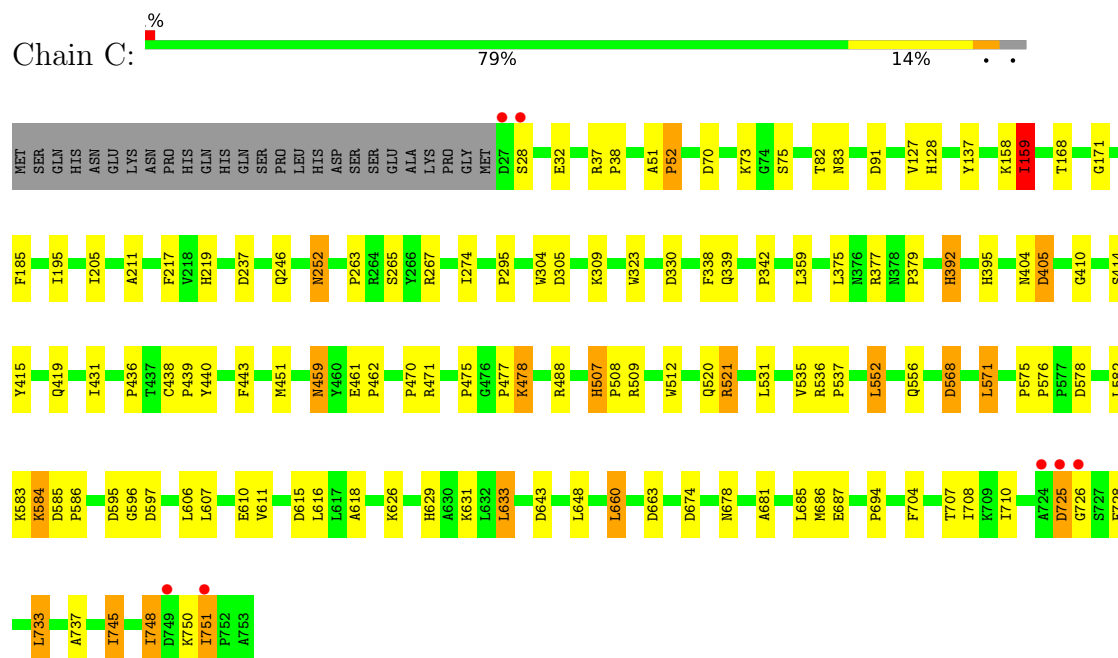
• Molecule 1: PROTEIN (CATALASE HP1I)



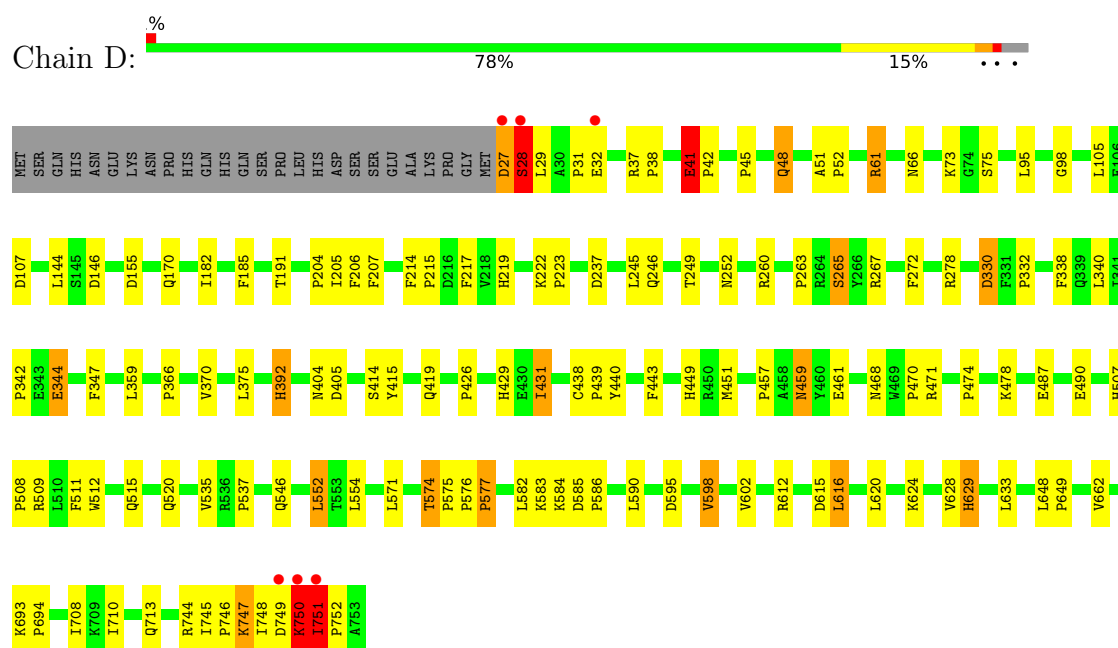
• Molecule 1: PROTEIN (CATALASE HP1I)



• Molecule 1: PROTEIN (CATALASE HP1I)



• Molecule 1: PROTEIN (CATALASE HP1I)



4 Data and refinement statistics

Property	Value	Source
Space group	P 1 21 1	Depositor
Cell constants a, b, c, α , β , γ	93.04Å 132.34Å 121.20Å 90.00° 109.63° 90.00°	Depositor
Resolution (Å)	87.60 – 1.89 87.60 – 1.89	Depositor EDS
% Data completeness (in resolution range)	(Not available) (87.60-1.89) 97.6 (87.60-1.89)	Depositor EDS
R_{merge}	(Not available)	Depositor
R_{sym}	(Not available)	Depositor
$\langle I/\sigma(I) \rangle$ ¹	2.19 (at 1.89Å)	Xtriage
Refinement program	REFMAC	Depositor
R, R_{free}	0.163 , 0.202 (Not available) , 0.174	Depositor DCC
R_{free} test set	10774 reflections (5.03%)	wwPDB-VP
Wilson B-factor (Å ²)	9.5	Xtriage
Anisotropy	0.249	Xtriage
Bulk solvent k_{sol} (e/Å ³), B_{sol} (Å ²)	0.36 , 53.9	EDS
L-test for twinning ²	$\langle L \rangle = 0.50$, $\langle L^2 \rangle = 0.34$	Xtriage
Estimated twinning fraction	0.020 for h,-k,-h-l	Xtriage
F_o, F_c correlation	0.95	EDS
Total number of atoms	26368	wwPDB-VP
Average B, all atoms (Å ²)	12.0	wwPDB-VP

Xtriage's analysis on translational NCS is as follows: *The largest off-origin peak in the Patterson function is 3.58% of the height of the origin peak. No significant pseudotranslation is detected.*

¹Intensities estimated from amplitudes.

²Theoretical values of $\langle |L| \rangle$, $\langle L^2 \rangle$ for acentric reflections are 0.5, 0.333 respectively for untwinned datasets, and 0.375, 0.2 for perfectly twinned datasets.

5 Model quality ⓘ

5.1 Standard geometry ⓘ

Bond lengths and bond angles in the following residue types are not validated in this section: HDD

The Z score for a bond length (or angle) is the number of standard deviations the observed value is removed from the expected value. A bond length (or angle) with $|Z| > 5$ is considered an outlier worth inspection. RMSZ is the root-mean-square of all Z scores of the bond lengths (or angles).

Mol	Chain	Bond lengths		Bond angles	
		RMSZ	# Z >5	RMSZ	# Z >5
1	A	0.52	0/5902	1.39	50/8024 (0.6%)
1	B	0.51	0/5902	1.41	39/8024 (0.5%)
1	C	0.52	0/5902	1.39	51/8024 (0.6%)
1	D	0.50	0/5902	1.42	53/8024 (0.7%)
All	All	0.51	0/23608	1.40	193/32096 (0.6%)

There are no bond length outliers.

All (193) bond angle outliers are listed below:

Mol	Chain	Res	Type	Atoms	Z	Observed(°)	Ideal(°)
1	D	449	HIS	CA-CB-CG	13.13	126.93	113.80
1	A	728	PHE	CA-CB-CG	11.47	125.27	113.80
1	B	749	ASP	CA-CB-CG	10.45	123.05	112.60
1	D	612	ARG	CD-NE-CZ	10.45	139.03	124.40
1	A	575	PRO	N-CA-CB	9.43	108.47	103.19
1	C	728	PHE	CA-CB-CG	9.30	123.10	113.80
1	C	674	ASP	CA-CB-CG	8.98	121.58	112.60
1	D	575	PRO	N-CA-CB	8.74	108.09	103.19
1	C	575	PRO	N-CA-CB	8.55	107.98	103.19
1	D	155	ASP	CA-CB-CG	8.53	121.13	112.60
1	C	725	ASP	CA-CB-CG	-8.44	104.16	112.60
1	A	59	ASP	CA-CB-CG	8.36	120.96	112.60
1	A	217	PHE	CA-CB-CG	-8.15	105.65	113.80
1	D	61	ARG	NE-CZ-NH2	8.09	126.48	119.20
1	D	414	SER	N-CA-C	7.95	119.58	111.07
1	C	28	SER	N-CA-C	-7.87	100.78	111.87
1	C	726	GLY	N-CA-C	-7.78	94.75	113.18
1	B	28	SER	N-CA-CB	7.76	123.60	110.49
1	C	745	ILE	N-CA-CB	7.68	115.67	110.52
1	A	414	SER	N-CA-C	7.30	119.32	111.36

Continued on next page...

Continued from previous page...

Mol	Chain	Res	Type	Atoms	Z	Observed(°)	Ideal(°)
1	C	414	SER	N-CA-C	7.30	118.88	111.07
1	B	595	ASP	CA-CB-CG	7.24	119.84	112.60
1	B	128	HIS	CA-CB-CG	7.17	120.97	113.80
1	B	728	PHE	CA-CB-CG	7.13	120.93	113.80
1	C	536	ARG	CA-C-O	7.04	123.86	119.29
1	C	217	PHE	CA-CB-CG	-7.03	106.77	113.80
1	A	157	ASN	CA-CB-CG	-7.01	105.59	112.60
1	A	419	GLN	CB-CG-CD	-6.99	100.72	112.60
1	C	725	ASP	N-CA-CB	6.98	122.28	110.49
1	D	474	PRO	N-CA-CB	6.90	107.05	103.19
1	D	615	ASP	CA-CB-CG	6.88	119.48	112.60
1	B	217	PHE	CA-CB-CG	-6.88	106.92	113.80
1	A	171	GLY	N-CA-C	6.80	119.81	112.33
1	B	567	THR	CA-C-N	6.76	129.67	120.54
1	B	567	THR	C-N-CA	6.76	129.67	120.54
1	B	263	PRO	N-CA-CB	6.74	109.21	103.35
1	C	568	ASP	CA-CB-CG	-6.71	105.89	112.60
1	C	338	PHE	CA-CB-CG	6.70	120.50	113.80
1	D	338	PHE	CA-CB-CG	6.67	120.47	113.80
1	C	52	PRO	N-CA-CB	6.59	109.05	103.25
1	C	295	PRO	N-CA-CB	6.59	107.64	103.23
1	D	185	PHE	CA-CB-CG	6.51	120.31	113.80
1	C	597	ASP	CA-CB-CG	6.48	119.08	112.60
1	B	748	ILE	CA-C-N	6.45	129.21	120.38
1	B	748	ILE	C-N-CA	6.45	129.21	120.38
1	C	263	PRO	N-CA-CB	6.43	108.95	103.35
1	C	419	GLN	CB-CG-CD	-6.41	101.71	112.60
1	B	392	HIS	CA-C-N	6.36	126.04	119.56
1	B	392	HIS	C-N-CA	6.36	126.04	119.56
1	D	98	GLY	N-CA-C	-6.29	103.75	112.18
1	D	217	PHE	CA-CB-CG	-6.27	107.53	113.80
1	C	663	ASP	CA-CB-CG	-6.27	106.33	112.60
1	D	419	GLN	CB-CG-CD	-6.27	101.95	112.60
1	B	414	SER	N-CA-C	6.26	117.76	111.07
1	A	349	PHE	CA-CB-CG	-6.25	107.55	113.80
1	A	57	ALA	CA-C-N	6.18	126.08	119.28
1	A	57	ALA	C-N-CA	6.18	126.08	119.28
1	D	246	GLN	CA-C-N	6.18	125.86	119.56
1	D	246	GLN	C-N-CA	6.18	125.86	119.56
1	A	751	ILE	N-CA-CB	6.15	115.80	110.08
1	C	265	SER	N-CA-CB	-6.15	102.03	111.56
1	B	474	PRO	N-CA-CB	6.10	106.61	103.19

Continued on next page...

Continued from previous page...

Mol	Chain	Res	Type	Atoms	Z	Observed(°)	Ideal(°)
1	D	41	GLU	CB-CG-CD	6.06	122.90	112.60
1	D	574	THR	CA-C-N	6.05	124.07	119.66
1	D	574	THR	C-N-CA	6.05	124.07	119.66
1	B	419	GLN	CG-CD-NE2	6.01	125.42	116.40
1	D	612	ARG	CG-CD-NE	6.00	125.21	112.00
1	D	366	PRO	N-CA-CB	5.99	108.90	103.33
1	A	82	THR	N-CA-C	-5.99	102.77	110.19
1	B	745	ILE	N-CA-CB	5.99	114.53	110.52
1	A	595	ASP	CA-CB-CG	5.98	118.58	112.60
1	A	474	PRO	N-CA-CB	5.98	106.54	103.19
1	B	185	PHE	CA-CB-CG	5.98	119.78	113.80
1	B	57	ALA	CA-C-N	5.97	125.66	119.56
1	B	57	ALA	C-N-CA	5.97	125.66	119.56
1	B	419	GLN	CB-CG-CD	-5.97	102.45	112.60
1	D	61	ARG	CD-NE-CZ	5.94	132.71	124.40
1	A	304	TRP	N-CA-C	5.92	118.22	111.11
1	C	392	HIS	CA-C-N	5.89	125.57	119.56
1	C	392	HIS	C-N-CA	5.89	125.57	119.56
1	D	431	ILE	N-CA-C	-5.87	103.20	108.95
1	C	168	THR	N-CA-C	-5.85	100.75	109.94
1	A	708	ILE	CA-C-N	5.85	132.72	121.54
1	A	708	ILE	C-N-CA	5.85	132.72	121.54
1	C	158	LYS	CA-C-N	-5.83	115.58	123.10
1	C	158	LYS	C-N-CA	-5.83	115.58	123.10
1	C	475	PRO	N-CA-CB	5.82	108.41	103.35
1	C	595	ASP	CA-CB-CG	5.82	118.42	112.60
1	C	237	ASP	N-CA-C	5.81	118.09	111.11
1	C	694	PRO	N-CA-CB	5.78	108.45	103.31
1	D	182	ILE	N-CA-C	-5.76	103.77	110.05
1	A	168	THR	N-CA-C	-5.74	100.93	109.94
1	B	585	ASP	CA-C-N	5.71	125.38	119.56
1	B	585	ASP	C-N-CA	5.71	125.38	119.56
1	C	339	GLN	N-CA-C	-5.69	99.46	108.73
1	D	206	PHE	CA-CB-CG	-5.66	108.14	113.80
1	C	507	HIS	CA-C-N	5.65	125.32	119.05
1	C	507	HIS	C-N-CA	5.65	125.32	119.05
1	B	237	ASP	N-CA-C	5.63	117.87	111.11
1	A	585	ASP	CA-C-N	5.63	125.30	119.56
1	A	585	ASP	C-N-CA	5.63	125.30	119.56
1	B	431	ILE	N-CA-C	-5.62	103.44	108.95
1	D	237	ASP	N-CA-C	5.62	117.86	111.11
1	A	185	PHE	CA-CB-CG	5.62	119.42	113.80

Continued on next page...

Continued from previous page...

Mol	Chain	Res	Type	Atoms	Z	Observed(°)	Ideal(°)
1	B	649	PRO	N-CA-CB	5.59	108.00	103.36
1	D	342	PRO	N-CA-CB	5.58	108.21	103.35
1	D	45	PRO	N-CA-CB	5.58	108.21	103.19
1	B	449	HIS	CA-CB-CG	5.57	119.37	113.80
1	D	38	PRO	N-CA-CB	5.56	108.51	103.34
1	D	61	ARG	NE-CZ-NH1	-5.56	115.94	121.50
1	A	224	GLU	CA-C-N	5.54	125.07	119.19
1	A	224	GLU	C-N-CA	5.54	125.07	119.19
1	A	263	PRO	N-CA-CB	5.53	108.47	103.33
1	A	497	ARG	CD-NE-CZ	5.53	132.14	124.40
1	C	342	PRO	N-CA-CB	5.52	108.16	103.35
1	D	585	ASP	CA-C-N	5.52	125.19	119.56
1	D	585	ASP	C-N-CA	5.52	125.19	119.56
1	A	471	ARG	N-CA-C	5.50	119.03	110.17
1	A	529	PHE	CA-CB-CG	-5.47	108.33	113.80
1	A	210	ASP	CA-CB-CG	5.45	118.05	112.60
1	C	185	PHE	CA-CB-CG	5.45	119.25	113.80
1	D	629	HIS	CA-CB-CG	-5.44	108.36	113.80
1	D	586	PRO	N-CA-CB	5.42	108.90	103.48
1	A	751	ILE	CA-C-O	5.42	124.75	119.71
1	D	32	GLU	CB-CG-CD	5.40	121.79	112.60
1	B	37	ARG	CD-NE-CZ	5.39	131.95	124.40
1	B	52	PRO	N-CA-CB	5.39	108.11	103.31
1	D	170	GLN	CA-C-N	5.39	125.46	120.34
1	D	170	GLN	C-N-CA	5.39	125.46	120.34
1	B	155	ASP	CA-CB-CG	5.38	117.97	112.60
1	A	31	PRO	N-CA-CB	5.36	108.02	103.35
1	B	403	THR	N-CA-CB	5.36	120.26	111.31
1	A	37	ARG	CA-C-N	5.34	125.60	119.83
1	A	37	ARG	C-N-CA	5.34	125.60	119.83
1	A	392	HIS	CA-C-N	5.34	124.96	119.56
1	A	392	HIS	C-N-CA	5.34	124.96	119.56
1	C	70	ASP	CA-CB-CG	5.34	117.94	112.60
1	A	749	ASP	CA-CB-CG	-5.33	107.27	112.60
1	D	471	ARG	N-CA-C	5.31	118.40	109.95
1	B	580	ASN	CA-CB-CG	-5.31	107.29	112.60
1	D	344	GLU	CA-CB-CG	5.30	124.71	114.10
1	A	745	ILE	N-CA-CB	5.30	114.07	110.52
1	A	278	ARG	NE-CZ-NH1	-5.30	116.20	121.50
1	C	246	GLN	CA-C-N	5.30	124.97	119.56
1	C	246	GLN	C-N-CA	5.30	124.97	119.56
1	A	339	GLN	N-CA-C	-5.30	100.10	108.73

Continued on next page...

Continued from previous page...

Mol	Chain	Res	Type	Atoms	Z	Observed(°)	Ideal(°)
1	D	330	ASP	CB-CA-C	-5.29	103.87	111.91
1	C	615	ASP	CA-CB-CG	5.28	117.88	112.60
1	A	649	PRO	N-CA-CB	5.28	108.25	103.34
1	D	392	HIS	CA-C-N	5.28	125.36	119.87
1	D	392	HIS	C-N-CA	5.28	125.36	119.87
1	C	405	ASP	CA-C-N	5.26	124.87	119.56
1	C	405	ASP	C-N-CA	5.26	124.87	119.56
1	A	342	PRO	N-CA-CB	5.25	107.92	103.35
1	C	159	ILE	CB-CA-C	5.24	118.77	110.81
1	A	44	PRO	N-CA-CB	5.23	108.15	103.08
1	B	82	THR	N-CA-C	-5.20	104.01	110.41
1	A	161	PRO	N-CA-CB	5.19	107.93	103.31
1	C	585	ASP	CA-C-N	5.19	124.86	119.56
1	C	585	ASP	C-N-CA	5.19	124.86	119.56
1	B	98	GLY	N-CA-C	-5.17	106.22	112.48
1	B	156	PRO	N-CA-CB	5.17	108.65	103.48
1	C	304	TRP	N-CA-C	5.16	117.30	111.11
1	D	48	GLN	O-C-N	5.16	125.01	121.71
1	C	748	ILE	N-CA-C	5.16	117.53	111.09
1	D	595	ASP	CA-CB-CG	5.15	117.75	112.60
1	C	751	ILE	CA-C-O	5.14	122.19	119.15
1	A	120	GLU	N-CA-C	5.14	116.96	111.36
1	B	405	ASP	CA-CB-CG	5.14	117.74	112.60
1	C	471	ARG	N-CA-C	5.12	118.41	110.17
1	C	171	GLY	N-CA-C	5.11	117.95	112.33
1	B	338	PHE	CA-CB-CG	5.10	118.90	113.80
1	A	155	ASP	CA-CB-CG	5.10	117.70	112.60
1	D	37	ARG	CA-C-N	5.09	124.86	119.76
1	D	37	ARG	C-N-CA	5.09	124.86	119.76
1	D	27	ASP	CA-CB-CG	5.09	117.69	112.60
1	D	265	SER	N-CA-CB	-5.08	103.83	111.56
1	C	82	THR	N-CA-C	-5.08	103.34	110.35
1	A	431	ILE	CA-C-N	5.08	126.19	119.84
1	A	431	ILE	C-N-CA	5.08	126.19	119.84
1	D	457	PRO	N-CA-CB	5.08	108.88	103.39
1	D	347	PHE	CA-CB-CG	-5.06	108.74	113.80
1	D	751	ILE	CA-C-O	5.06	126.73	119.95
1	D	263	PRO	N-CA-CB	5.05	107.74	103.35
1	A	405	ASP	CA-C-N	5.05	124.66	119.56
1	A	405	ASP	C-N-CA	5.05	124.66	119.56
1	C	431	ILE	N-CA-C	-5.05	103.46	108.96
1	D	649	PRO	N-CA-CB	5.05	107.80	103.36

Continued on next page...

Continued from previous page...

Mol	Chain	Res	Type	Atoms	Z	Observed(°)	Ideal(°)
1	B	332	PRO	N-CA-CB	5.04	107.66	103.17
1	B	304	TRP	N-CA-C	5.04	117.16	111.11
1	D	577	PRO	N-CA-CB	5.03	107.73	103.35
1	C	586	PRO	N-CA-CB	5.03	108.51	103.48
1	A	507	HIS	CA-CB-CG	-5.01	108.78	113.80

There are no chirality outliers.

There are no planarity outliers.

5.2 Too-close contacts [i](#)

In the following table, the Non-H and H(model) columns list the number of non-hydrogen atoms and hydrogen atoms in the chain respectively. The H(added) column lists the number of hydrogen atoms added and optimized by MolProbity. The Clashes column lists the number of clashes within the asymmetric unit, whereas Symm-Clashes lists symmetry-related clashes.

Mol	Chain	Non-H	H(model)	H(added)	Clashes	Symm-Clashes
1	A	5746	0	5578	55	0
1	B	5746	0	5578	70	0
1	C	5746	0	5578	56	0
1	D	5746	0	5578	71	0
2	A	44	0	31	6	0
2	B	44	0	31	3	0
2	C	44	0	31	2	0
2	D	44	0	31	1	0
3	A	843	0	0	3	0
3	B	735	0	0	8	0
3	C	791	0	0	8	0
3	D	839	0	0	9	0
All	All	26368	0	22436	241	0

The all-atom clashscore is defined as the number of clashes found per 1000 atoms (including hydrogen atoms). The all-atom clashscore for this structure is 5.

All (241) close contacts within the same asymmetric unit are listed below, sorted by their clash magnitude.

Atom-1	Atom-2	Interatomic distance (Å)	Clash overlap (Å)
2:A:760:HDD:C3D	2:A:760:HDD:CAD	1.76	1.57
1:A:392:HIS:ND1	1:A:415:TYR:HB2	1.09	1.41
1:C:392:HIS:ND1	1:C:415:TYR:HB2	1.08	1.39

Continued on next page...

Continued from previous page...

Atom-1	Atom-2	Interatomic distance (Å)	Clash overlap (Å)
1:D:392:HIS:ND1	1:D:415:TYR:HB2	1.10	1.38
1:B:392:HIS:ND1	1:B:415:TYR:HB2	1.08	1.35
1:B:451:MET:HE2	1:D:451:MET:HE2	1.38	1.06
1:A:451:MET:HE2	1:C:451:MET:HE2	1.42	1.02
1:D:392:HIS:CE1	1:D:415:TYR:HB2	2.11	0.83
2:A:760:HDD:CAD	2:A:760:HDD:C4D	2.57	0.82
1:B:392:HIS:CE1	1:B:415:TYR:HB2	2.15	0.79
1:D:750:LYS:HD3	1:D:751:ILE:H	1.48	0.78
1:B:612:ARG:HD3	1:B:670:GLY:HA2	1.65	0.77
1:A:392:HIS:CE1	1:A:415:TYR:HB2	2.14	0.76
1:B:583:LYS:NZ	1:B:583:LYS:H	1.83	0.74
1:C:552:LEU:HD21	1:C:571:LEU:HD12	1.70	0.74
1:A:392:HIS:CG	1:A:415:TYR:HB2	2.17	0.74
2:C:760:HDD:HMC1	2:C:760:HDD:HBC1	1.72	0.72
1:C:392:HIS:CE1	1:C:415:TYR:HB2	2.14	0.70
1:C:392:HIS:CG	1:C:415:TYR:HB2	2.19	0.69
1:D:267:ARG:HG3	3:D:1253:HOH:O	1.92	0.69
1:C:748:ILE:O	1:C:751:ILE:HG22	1.92	0.69
1:B:552:LEU:HD21	1:B:571:LEU:HD12	1.74	0.69
1:D:392:HIS:CG	1:D:415:TYR:HB2	2.21	0.69
1:B:392:HIS:CG	1:B:415:TYR:HB2	2.20	0.69
1:C:274:ILE:HD12	2:C:760:HDD:HMB3	1.75	0.69
1:B:468:ASN:HD22	1:D:27:ASP:N	1.92	0.68
1:C:708:ILE:HG13	1:C:710:ILE:HG12	1.76	0.67
1:B:281:ASN:OD1	1:B:283:GLU:HG3	1.96	0.66
1:B:552:LEU:HD22	1:B:556:GLN:HG3	1.78	0.66
1:B:583:LYS:O	1:B:584:LYS:HB3	1.96	0.66
1:C:267:ARG:HG3	3:C:1464:HOH:O	1.94	0.66
1:D:27:ASP:O	1:D:28:SER:HB2	1.95	0.65
1:B:267:ARG:HG3	3:B:1236:HOH:O	1.95	0.64
1:D:750:LYS:HD3	1:D:751:ILE:N	2.12	0.64
2:A:760:HDD:CAD	2:A:760:HDD:C2D	2.66	0.62
1:B:359:LEU:H	1:B:507:HIS:HD2	1.47	0.61
1:A:690:LYS:HG3	1:A:751:ILE:HD11	1.82	0.61
1:A:748:ILE:O	1:A:751:ILE:HG13	2.00	0.61
1:D:51:ALA:HB1	1:D:52:PRO:HD2	1.83	0.61
1:D:144:LEU:HD11	1:D:370:VAL:HG13	1.83	0.60
1:D:61:ARG:HH11	1:D:66:ASN:HA	1.66	0.60
1:A:709:LYS:HE3	1:A:709:LYS:HA	1.86	0.58
1:B:710:ILE:HD13	1:B:718:ILE:HG13	1.84	0.57
1:D:27:ASP:HB2	1:D:29:LEU:HD21	1.85	0.57

Continued on next page...

Continued from previous page...

Atom-1	Atom-2	Interatomic distance (Å)	Clash overlap (Å)
1:D:583:LYS:O	1:D:584:LYS:HB3	2.05	0.57
1:B:578:ASP:HB3	1:B:582:LEU:O	2.05	0.56
1:A:751:ILE:HD12	1:A:751:ILE:O	2.04	0.56
1:A:27:ASP:O	1:A:28:SER:C	2.48	0.56
1:A:28:SER:CB	1:D:245:LEU:HD22	2.35	0.56
1:D:708:ILE:HG13	1:D:710:ILE:HG12	1.87	0.56
1:A:28:SER:HB2	1:D:245:LEU:HD13	1.87	0.55
1:D:330:ASP:OD1	1:D:629:HIS:HE1	1.89	0.55
1:C:137:TYR:HB2	1:C:159:ILE:CD1	2.37	0.55
1:C:745:ILE:HD13	3:C:1466:HOH:O	2.07	0.55
1:A:294:LYS:NZ	3:A:1120:HOH:O	2.40	0.54
1:D:260:ARG:HD3	1:D:590:LEU:HD21	1.90	0.54
1:B:51:ALA:HB1	1:B:52:PRO:HD2	1.90	0.54
1:A:30:ALA:HB1	1:A:31:PRO:HD2	1.90	0.54
3:A:912:HOH:O	1:C:52:PRO:HG3	2.08	0.54
1:D:535:VAL:O	1:D:537:PRO:HD3	2.06	0.54
1:C:535:VAL:O	1:C:537:PRO:HD3	2.07	0.53
1:A:36:HIS:CD2	1:A:36:HIS:H	2.26	0.53
1:B:330:ASP:OD1	1:B:629:HIS:HE1	1.90	0.53
1:A:222:LYS:HB3	1:A:223:PRO:HD2	1.90	0.53
1:C:610:GLU:OE1	1:C:643:ASP:HA	2.07	0.53
1:C:477:PRO:HB2	1:C:478:LYS:HD3	1.91	0.53
1:D:629:HIS:HD2	3:D:1134:HOH:O	1.91	0.53
1:A:459:ASN:ND2	1:B:219:HIS:HB3	2.25	0.52
1:B:37:ARG:HD2	3:B:1429:HOH:O	2.09	0.52
2:B:760:HDD:HMB1	2:B:760:HDD:HBB1	1.91	0.52
1:C:443:PHE:CZ	1:C:470:PRO:HD2	2.45	0.52
1:D:359:LEU:H	1:D:507:HIS:HD2	1.56	0.52
1:B:27:ASP:HB3	3:B:1359:HOH:O	2.10	0.52
1:C:359:LEU:H	1:C:507:HIS:HD2	1.58	0.52
1:C:583:LYS:O	1:C:584:LYS:HB3	2.10	0.51
1:D:509:ARG:HD2	1:D:576:PRO:HD2	1.93	0.51
1:B:278:ARG:HH22	1:B:487:GLU:CD	2.18	0.51
1:A:404:ASN:O	1:A:405:ASP:C	2.54	0.51
1:C:578:ASP:HB2	1:C:582:LEU:O	2.11	0.51
1:B:521:ARG:HH21	1:B:745:ILE:HD13	1.74	0.51
1:D:744:ARG:HA	1:D:747:LYS:HD3	1.91	0.51
3:B:961:HOH:O	1:D:52:PRO:HG3	2.09	0.51
1:A:29:LEU:HB2	3:C:1352:HOH:O	2.10	0.50
1:B:521:ARG:HD3	3:B:1462:HOH:O	2.11	0.50
1:B:535:VAL:O	1:B:537:PRO:HD3	2.11	0.50

Continued on next page...

Continued from previous page...

Atom-1	Atom-2	Interatomic distance (Å)	Clash overlap (Å)
1:D:552:LEU:HD11	1:D:571:LEU:HD23	1.92	0.50
1:B:416:THR:HG21	3:D:1400:HOH:O	2.10	0.50
2:D:760:HDD:HBB1	2:D:760:HDD:HMB1	1.94	0.50
1:B:36:HIS:HD1	1:B:36:HIS:H	1.60	0.50
1:C:211:ALA:CB	1:C:410:GLY:HA3	2.41	0.50
1:A:274:ILE:HD12	2:A:760:HDD:HMB3	1.92	0.50
1:A:418:THR:HG21	2:A:760:HDD:HBD2	1.93	0.50
1:B:443:PHE:CZ	1:B:470:PRO:HD2	2.46	0.50
1:D:602:VAL:HG13	1:D:662:VAL:HA	1.92	0.50
1:B:556:GLN:HG2	1:B:566:LEU:HD23	1.93	0.49
1:D:598:VAL:HG13	1:D:628:VAL:CG2	2.42	0.49
1:A:586:PRO:HB2	1:A:593:ILE:HD11	1.93	0.49
1:B:359:LEU:H	1:B:507:HIS:CD2	2.29	0.49
2:B:760:HDD:HBC1	2:B:760:HDD:HMC1	1.94	0.49
1:D:478:LYS:HD2	3:D:1546:HOH:O	2.12	0.49
1:D:616:LEU:HD22	1:D:620:LEU:HG	1.95	0.49
1:A:535:VAL:O	1:A:537:PRO:HD3	2.13	0.49
1:D:214:PHE:HB3	1:D:215:PRO:HD3	1.94	0.49
1:A:219:HIS:HB3	1:B:459:ASN:ND2	2.28	0.48
1:C:330:ASP:OD1	1:C:629:HIS:HE1	1.95	0.48
1:D:146:ASP:HB2	3:D:1383:HOH:O	2.13	0.48
1:D:546:GLN:HG3	3:D:1486:HOH:O	2.13	0.48
1:C:626:LYS:HG3	1:C:733:LEU:HG	1.95	0.48
1:D:61:ARG:NH1	1:D:66:ASN:HA	2.29	0.48
1:C:459:ASN:ND2	1:D:219:HIS:HB3	2.29	0.48
1:D:751:ILE:HD13	1:D:752:PRO:HD2	1.96	0.48
1:B:710:ILE:CD1	1:B:718:ILE:HG13	2.44	0.48
1:B:27:ASP:OD2	1:D:468:ASN:ND2	2.37	0.48
1:B:251:HIS:CE1	1:B:507:HIS:HB3	2.49	0.47
1:B:207:PHE:O	1:B:249:THR:HA	2.14	0.47
1:C:404:ASN:O	1:C:405:ASP:C	2.55	0.47
1:C:704:PHE:O	1:C:707:THR:HG22	2.14	0.47
1:A:214:PHE:HB3	1:A:215:PRO:HD3	1.97	0.47
1:A:443:PHE:CZ	1:A:470:PRO:HD2	2.49	0.47
1:A:211:ALA:CB	1:A:410:GLY:HA3	2.45	0.47
1:B:97:ALA:O	1:B:101:GLY:HA3	2.14	0.47
1:C:219:HIS:HB3	1:D:459:ASN:ND2	2.30	0.47
1:B:116:HIS:CD2	1:D:426:PRO:HB2	2.51	0.46
1:B:144:LEU:HD11	1:B:370:VAL:HG13	1.97	0.46
1:C:629:HIS:HD2	3:C:1067:HOH:O	1.99	0.46
1:D:207:PHE:O	1:D:249:THR:HA	2.15	0.46

Continued on next page...

Continued from previous page...

Atom-1	Atom-2	Interatomic distance (Å)	Clash overlap (Å)
1:D:431:ILE:HD11	3:D:1575:HOH:O	2.16	0.46
1:B:404:ASN:O	1:B:405:ASP:C	2.59	0.46
1:B:533:LYS:HE2	3:B:1471:HOH:O	2.14	0.46
1:C:751:ILE:HB	3:C:1343:HOH:O	2.15	0.46
1:A:392:HIS:ND1	1:A:415:TYR:CG	2.80	0.46
1:A:612:ARG:HG3	3:A:1460:HOH:O	2.15	0.46
1:B:604:ALA:HB2	1:B:662:VAL:HG11	1.97	0.46
1:B:309:LYS:HD2	1:B:660:LEU:HD11	1.98	0.46
1:B:583:LYS:H	1:B:583:LYS:HZ1	1.61	0.46
1:C:461:GLU:HA	1:C:462:PRO:C	2.41	0.46
1:C:610:GLU:HG3	1:C:610:GLU:O	2.15	0.46
1:D:278:ARG:HH12	1:D:487:GLU:CD	2.25	0.45
1:B:413:PHE:HB2	1:D:105:LEU:HD11	1.98	0.45
1:B:459:ASN:HD22	1:B:459:ASN:H	1.64	0.45
1:C:38:PRO:HG2	1:C:51:ALA:HB2	1.98	0.45
1:A:332:PRO:HD2	1:A:375:LEU:O	2.17	0.45
1:C:359:LEU:H	1:C:507:HIS:CD2	2.35	0.45
1:C:323:TRP:CZ3	1:C:379:PRO:HD2	2.51	0.45
1:D:267:ARG:HG2	1:D:332:PRO:HB3	1.98	0.45
1:B:583:LYS:H	1:B:583:LYS:HZ3	1.62	0.45
1:D:438:CYS:HB2	1:D:439:PRO:CD	2.47	0.45
1:A:28:SER:HB2	1:D:245:LEU:HD22	1.99	0.45
1:C:521:ARG:HG2	3:C:1466:HOH:O	2.17	0.45
1:C:660:LEU:HD13	1:C:687:GLU:CD	2.42	0.45
1:C:686:MET:HB3	1:C:751:ILE:HD11	1.99	0.45
1:C:618:ALA:HB1	1:C:725:ASP:HB2	1.99	0.45
1:C:73:LYS:HD2	3:C:1424:HOH:O	2.17	0.44
1:B:629:HIS:HD2	3:B:1029:HOH:O	1.99	0.44
1:D:574:THR:HG22	3:D:1182:HOH:O	2.16	0.44
1:A:51:ALA:HB1	1:A:52:PRO:HD2	1.99	0.44
1:C:392:HIS:HB3	1:C:395:HIS:CE1	2.53	0.44
1:D:443:PHE:CZ	1:D:470:PRO:HD2	2.53	0.44
1:A:461:GLU:HA	1:A:462:PRO:C	2.42	0.44
1:B:751:ILE:HD12	1:B:753:ALA:HB2	1.99	0.44
1:D:222:LYS:HB3	1:D:223:PRO:HD2	1.99	0.44
1:A:52:PRO:HG3	3:C:1000:HOH:O	2.16	0.44
1:B:438:CYS:HB2	1:B:439:PRO:HD2	1.98	0.44
1:A:37:ARG:HA	1:A:38:PRO:HD3	1.83	0.44
1:A:696:ALA:HB1	1:A:728:PHE:CZ	2.53	0.44
1:B:521:ARG:NH2	1:B:745:ILE:HD13	2.32	0.44
1:C:305:ASP:O	1:C:309:LYS:HG3	2.17	0.44

Continued on next page...

Continued from previous page...

Atom-1	Atom-2	Interatomic distance (Å)	Clash overlap (Å)
1:C:686:MET:CB	1:C:751:ILE:HD11	2.47	0.44
1:B:211:ALA:CB	1:B:410:GLY:HA3	2.48	0.44
1:A:612:ARG:HE	1:A:669:CYS:HB3	1.83	0.44
1:D:404:ASN:O	1:D:405:ASP:C	2.59	0.44
1:C:359:LEU:C	1:C:359:LEU:HD12	2.43	0.43
1:A:745:ILE:N	1:A:746:PRO:HD2	2.33	0.43
1:B:748:ILE:O	1:B:751:ILE:HG22	2.18	0.43
1:D:624:LYS:HD3	1:D:624:LYS:C	2.43	0.43
1:A:222:LYS:HB3	1:A:223:PRO:CD	2.48	0.43
1:C:438:CYS:HB2	1:C:439:PRO:HD2	2.00	0.43
1:A:207:PHE:O	1:A:249:THR:HA	2.18	0.43
1:C:678:ASN:HB3	1:C:681:ALA:HB3	1.99	0.43
1:A:689:TYR:OH	1:A:710:ILE:HG21	2.19	0.43
1:C:596:GLY:HA3	1:C:737:ALA:O	2.19	0.43
1:C:552:LEU:HD13	1:C:556:GLN:NE2	2.34	0.43
1:C:607:LEU:HD22	1:C:611:VAL:HG21	2.01	0.43
1:D:745:ILE:HB	1:D:746:PRO:HD3	1.99	0.43
1:A:538:TYR:CE2	1:D:31:PRO:HG3	2.54	0.43
1:B:686:MET:HG2	1:B:751:ILE:HD11	2.00	0.43
1:C:127:VAL:O	1:C:128:HIS:HB2	2.19	0.43
1:D:693:LYS:HA	1:D:694:PRO:HD3	1.85	0.43
1:C:252:ASN:HD22	1:C:252:ASN:HA	1.67	0.43
1:B:274:ILE:HD12	2:B:760:HDD:HMB1	2.00	0.43
1:B:634:TYR:O	1:B:653:THR:HA	2.18	0.43
1:D:95:LEU:HB3	1:D:107:ASP:HB2	1.99	0.43
1:D:577:PRO:HG2	3:D:1579:HOH:O	2.19	0.43
1:D:748:ILE:O	1:D:751:ILE:HG22	2.18	0.43
1:B:83:ASN:HB3	1:D:429:HIS:CG	2.53	0.42
1:C:195:ILE:HD11	1:C:436:PRO:HA	2.01	0.42
1:C:509:ARG:HD2	1:C:576:PRO:HD2	2.00	0.42
1:D:507:HIS:N	1:D:508:PRO:CD	2.82	0.42
1:B:139:GLN:HG2	1:B:156:PRO:O	2.19	0.42
1:A:469:TRP:CE3	1:A:471:ARG:HG3	2.54	0.42
1:B:332:PRO:HD2	1:B:375:LEU:O	2.19	0.42
1:B:686:MET:SD	1:B:707:THR:HG22	2.59	0.42
1:D:507:HIS:N	1:D:508:PRO:HD2	2.34	0.42
1:D:616:LEU:HD23	1:D:616:LEU:HA	1.93	0.42
1:A:252:ASN:HD22	1:A:252:ASN:HA	1.71	0.42
1:A:596:GLY:HA3	1:A:737:ALA:O	2.19	0.42
1:A:732:LEU:HD13	1:A:732:LEU:C	2.44	0.42
1:B:119:HIS:HB2	1:D:426:PRO:HG3	2.02	0.42

Continued on next page...

Continued from previous page...

Atom-1	Atom-2	Interatomic distance (Å)	Clash overlap (Å)
1:A:604:ALA:HB2	1:A:662:VAL:HG11	2.01	0.42
1:C:631:LYS:HG3	1:C:633:LEU:HD13	2.02	0.42
1:A:438:CYS:HB2	1:A:439:PRO:CD	2.50	0.42
1:A:634:TYR:O	1:A:653:THR:HA	2.19	0.42
1:B:222:LYS:HB3	1:B:223:PRO:HD2	2.02	0.42
1:B:507:HIS:N	1:B:508:PRO:CD	2.82	0.42
1:D:204:PRO:HB3	1:D:272:PHE:CD1	2.55	0.42
1:D:392:HIS:ND1	1:D:415:TYR:CG	2.83	0.42
1:D:512:TRP:CH2	1:D:520:GLN:HB3	2.55	0.41
1:B:509:ARG:HD2	1:B:576:PRO:HD2	2.03	0.41
1:B:709:LYS:HD2	1:B:709:LYS:HA	1.74	0.41
1:D:359:LEU:H	1:D:507:HIS:CD2	2.37	0.41
1:B:378:ASN:HB3	1:B:379:PRO:HD2	2.03	0.41
1:B:521:ARG:HH21	1:B:521:ARG:HD2	1.72	0.41
1:A:507:HIS:N	1:A:508:PRO:CD	2.84	0.41
1:A:516:THR:HB	1:A:517:PRO:HD2	2.02	0.41
1:A:331:PHE:HA	1:A:332:PRO:HD3	1.95	0.41
1:A:429:HIS:CG	1:C:83:ASN:HB3	2.55	0.41
1:B:626:LYS:NZ	3:B:1341:HOH:O	2.54	0.41
1:C:507:HIS:N	1:C:508:PRO:CD	2.83	0.41
1:D:27:ASP:HB2	1:D:29:LEU:CD2	2.50	0.41
1:D:222:LYS:HB3	1:D:223:PRO:CD	2.51	0.41
1:A:251:HIS:CE1	1:A:507:HIS:HB3	2.56	0.41
1:B:91:ASP:OD1	1:D:461:GLU:OE1	2.39	0.41
1:B:148:THR:HB	1:B:279:LEU:HB3	2.03	0.41
1:B:682:ASN:HB3	1:B:707:THR:HG21	2.02	0.41
1:A:144:LEU:HD11	1:A:370:VAL:HG13	2.03	0.40
1:A:461:GLU:OE1	1:C:91:ASP:OD1	2.38	0.40
1:B:669:CYS:SG	1:B:670:GLY:N	2.94	0.40
1:C:512:TRP:CH2	1:C:520:GLN:HB3	2.56	0.40
2:A:760:HDD:HBC1	2:A:760:HDD:HMC1	2.03	0.40
1:D:41:GLU:CD	1:D:42:PRO:HD2	2.46	0.40
1:D:511:PHE:O	1:D:515:GLN:HG2	2.22	0.40

There are no symmetry-related clashes.

5.3 Torsion angles

5.3.1 Protein backbone

In the following table, the Percentiles column shows the percent Ramachandran outliers of the chain as a percentile score with respect to all X-ray entries followed by that with respect to entries of similar resolution.

The Analysed column shows the number of residues for which the backbone conformation was analysed, and the total number of residues.

Mol	Chain	Analysed	Favoured	Allowed	Outliers	Percentiles	
1	A	725/753 (96%)	702 (97%)	19 (3%)	4 (1%)	21	13
1	B	725/753 (96%)	704 (97%)	17 (2%)	4 (1%)	21	13
1	C	725/753 (96%)	708 (98%)	16 (2%)	1 (0%)	48	40
1	D	725/753 (96%)	708 (98%)	13 (2%)	4 (1%)	21	13
All	All	2900/3012 (96%)	2822 (97%)	65 (2%)	13 (0%)	30	22

All (13) Ramachandran outliers are listed below:

Mol	Chain	Res	Type
1	A	28	SER
1	B	725	ASP
1	D	28	SER
1	D	750	LYS
1	D	751	ILE
1	A	75	SER
1	A	709	LYS
1	A	711	ALA
1	C	75	SER
1	B	28	SER
1	B	75	SER
1	B	584	LYS
1	D	75	SER

5.3.2 Protein sidechains

In the following table, the Percentiles column shows the percent sidechain outliers of the chain as a percentile score with respect to all X-ray entries followed by that with respect to entries of similar resolution.

The Analysed column shows the number of residues for which the sidechain conformation was analysed, and the total number of residues.

Mol	Chain	Analysed	Rotameric	Outliers	Percentiles	
1	A	612/636 (96%)	599 (98%)	13 (2%)	47	44
1	B	612/636 (96%)	587 (96%)	25 (4%)	27	19
1	C	612/636 (96%)	587 (96%)	25 (4%)	27	19
1	D	612/636 (96%)	586 (96%)	26 (4%)	26	19
All	All	2448/2544 (96%)	2359 (96%)	89 (4%)	31	23

All (89) residues with a non-rotameric sidechain are listed below:

Mol	Chain	Res	Type
1	A	29	LEU
1	A	73	LYS
1	A	191	THR
1	A	205	ILE
1	A	252	ASN
1	A	294	LYS
1	A	375	LEU
1	A	415	TYR
1	A	440	TYR
1	A	459	ASN
1	A	552	LEU
1	A	709	LYS
1	A	712	ASP
1	B	27	ASP
1	B	37	ARG
1	B	198	LEU
1	B	205	ILE
1	B	252	ASN
1	B	265	SER
1	B	283	GLU
1	B	321	GLU
1	B	344	GLU
1	B	375	LEU
1	B	440	TYR
1	B	459	ASN
1	B	552	LEU
1	B	562	LEU
1	B	565	GLU
1	B	566	LEU
1	B	568	ASP
1	B	571	LEU
1	B	583	LYS
1	B	595	ASP

Continued on next page...

Continued from previous page...

Mol	Chain	Res	Type
1	B	610	GLU
1	B	633	LEU
1	B	703	LYS
1	B	709	LYS
1	B	751	ILE
1	C	32	GLU
1	C	37	ARG
1	C	159	ILE
1	C	205	ILE
1	C	252	ASN
1	C	375	LEU
1	C	377	ARG
1	C	440	TYR
1	C	459	ASN
1	C	478	LYS
1	C	488	ARG
1	C	521	ARG
1	C	531	LEU
1	C	552	LEU
1	C	568	ASP
1	C	571	LEU
1	C	584	LYS
1	C	606	LEU
1	C	616	LEU
1	C	633	LEU
1	C	648	LEU
1	C	660	LEU
1	C	685	LEU
1	C	733	LEU
1	C	750	LYS
1	D	28	SER
1	D	41	GLU
1	D	48	GLN
1	D	73	LYS
1	D	191	THR
1	D	205	ILE
1	D	252	ASN
1	D	265	SER
1	D	340	LEU
1	D	344	GLU
1	D	375	LEU
1	D	440	TYR

Continued on next page...

Continued from previous page...

Mol	Chain	Res	Type
1	D	459	ASN
1	D	490	GLU
1	D	552	LEU
1	D	554	LEU
1	D	582	LEU
1	D	598	VAL
1	D	616	LEU
1	D	633	LEU
1	D	648	LEU
1	D	713	GLN
1	D	747	LYS
1	D	749	ASP
1	D	750	LYS
1	D	751	ILE

Sometimes sidechains can be flipped to improve hydrogen bonding and reduce clashes. All (22) such sidechains are listed below:

Mol	Chain	Res	Type
1	A	36	HIS
1	A	252	ASN
1	A	459	ASN
1	B	252	ASN
1	B	459	ASN
1	B	507	HIS
1	B	556	GLN
1	B	629	HIS
1	C	252	ASN
1	C	459	ASN
1	C	507	HIS
1	C	556	GLN
1	C	572	ASN
1	C	629	HIS
1	C	671	ASN
1	C	682	ASN
1	D	48	GLN
1	D	252	ASN
1	D	459	ASN
1	D	507	HIS
1	D	556	GLN
1	D	629	HIS

5.3.3 RNA ⓘ

There are no RNA molecules in this entry.

5.4 Non-standard residues in protein, DNA, RNA chains ⓘ

There are no non-standard protein/DNA/RNA residues in this entry.

5.5 Carbohydrates ⓘ

There are no oligosaccharides in this entry.

5.6 Ligand geometry ⓘ

4 ligands are modelled in this entry.

In the following table, the Counts columns list the number of bonds (or angles) for which Mogul statistics could be retrieved, the number of bonds (or angles) that are observed in the model and the number of bonds (or angles) that are defined in the Chemical Component Dictionary. The Link column lists molecule types, if any, to which the group is linked. The Z score for a bond length (or angle) is the number of standard deviations the observed value is removed from the expected value. A bond length (or angle) with $|Z| > 2$ is considered an outlier worth inspection. RMSZ is the root-mean-square of all Z scores of the bond lengths (or angles).

Mol	Type	Chain	Res	Link	Bond lengths			Bond angles		
					Counts	RMSZ	$\# Z > 2$	Counts	RMSZ	$\# Z > 2$
2	HDD	C	760	1,3	46,52,52	2.58	13 (28%)	62,89,89	3.93	38 (61%)
2	HDD	D	760	1	46,52,52	2.81	16 (34%)	62,89,89	3.80	34 (54%)
2	HDD	A	760	1,3	46,52,52	3.18	16 (34%)	62,89,89	3.87	38 (61%)
2	HDD	B	760	1,3	46,52,52	2.91	19 (41%)	62,89,89	3.78	35 (56%)

In the following table, the Chirals column lists the number of chiral outliers, the number of chiral centers analysed, the number of these observed in the model and the number defined in the Chemical Component Dictionary. Similar counts are reported in the Torsion and Rings columns. '-' means no outliers of that kind were identified.

Mol	Type	Chain	Res	Link	Chirals	Torsions	Rings
2	HDD	C	760	1,3	-	3/9/89/89	0/1/9/9
2	HDD	D	760	1	-	3/9/89/89	0/1/9/9
2	HDD	A	760	1,3	-	2/9/89/89	0/1/9/9
2	HDD	B	760	1,3	-	2/9/89/89	0/1/9/9

All (64) bond length outliers are listed below:

Mol	Chain	Res	Type	Atoms	Z	Observed(Å)	Ideal(Å)
2	A	760	HDD	CAD-C3D	12.77	1.76	1.53
2	B	760	HDD	C3D-C2D	-11.60	1.27	1.55
2	C	760	HDD	C3D-C2D	-11.34	1.28	1.55
2	A	760	HDD	C3D-C2D	-11.30	1.28	1.55
2	D	760	HDD	C3D-C2D	-11.09	1.28	1.55
2	B	760	HDD	CMD-C2D	6.73	1.62	1.53
2	B	760	HDD	O1D-C3D	6.54	1.57	1.46
2	D	760	HDD	CMD-C2D	6.33	1.61	1.53
2	C	760	HDD	O1D-C3D	6.12	1.56	1.46
2	D	760	HDD	O1D-C3D	5.93	1.56	1.46
2	A	760	HDD	O1D-C3D	5.50	1.55	1.46
2	D	760	HDD	OND-C2D	5.25	1.52	1.42
2	C	760	HDD	OND-C2D	5.19	1.52	1.42
2	A	760	HDD	OND-C2D	4.81	1.51	1.42
2	B	760	HDD	OND-C2D	4.81	1.51	1.42
2	D	760	HDD	CAD-C3D	4.74	1.61	1.53
2	B	760	HDD	CAD-C3D	4.54	1.61	1.53
2	D	760	HDD	O1D-CGD	-3.87	1.29	1.35
2	A	760	HDD	O1D-CGD	-3.65	1.30	1.35
2	C	760	HDD	O1D-CGD	-3.53	1.30	1.35
2	B	760	HDD	O1D-CGD	-3.52	1.30	1.35
2	A	760	HDD	CMD-C2D	3.11	1.57	1.53
2	A	760	HDD	CMC-C2C	3.06	1.57	1.50
2	D	760	HDD	C1B-NB	-2.95	1.34	1.39
2	A	760	HDD	C1B-NB	-2.91	1.34	1.39
2	C	760	HDD	CAB-C3B	2.87	1.55	1.47
2	D	760	HDD	CAB-C3B	2.78	1.54	1.47
2	B	760	HDD	C1B-NB	-2.76	1.34	1.39
2	C	760	HDD	C1B-NB	-2.71	1.34	1.39
2	B	760	HDD	CMC-C2C	2.67	1.56	1.50
2	B	760	HDD	CBA-CGA	2.64	1.56	1.50
2	C	760	HDD	CMC-C2C	2.62	1.56	1.50
2	B	760	HDD	CAB-C3B	2.56	1.54	1.47
2	D	760	HDD	CMC-C2C	2.54	1.56	1.50
2	B	760	HDD	CBA-CAA	2.50	1.60	1.51
2	C	760	HDD	C4A-C3A	2.48	1.49	1.43
2	B	760	HDD	C1A-C2A	2.47	1.49	1.44
2	A	760	HDD	CAC-C3C	2.47	1.54	1.47
2	D	760	HDD	C1A-C2A	2.43	1.49	1.44
2	A	760	HDD	C4A-C3A	2.40	1.48	1.43
2	A	760	HDD	CAB-C3B	2.34	1.53	1.47
2	B	760	HDD	CAC-C3C	2.34	1.53	1.47

Continued on next page...

Continued from previous page...

Mol	Chain	Res	Type	Atoms	Z	Observed(Å)	Ideal(Å)
2	C	760	HDD	CAC-C3C	2.34	1.53	1.47
2	B	760	HDD	CMB-C2B	2.32	1.55	1.50
2	A	760	HDD	CBA-CGA	2.28	1.55	1.50
2	D	760	HDD	C4A-C3A	2.25	1.48	1.43
2	C	760	HDD	CBA-CGA	2.25	1.55	1.50
2	C	760	HDD	C1A-C2A	2.24	1.49	1.44
2	A	760	HDD	CMB-C2B	2.23	1.55	1.50
2	D	760	HDD	CBA-CAA	2.21	1.59	1.51
2	C	760	HDD	CBA-CAA	2.19	1.59	1.51
2	B	760	HDD	C1C-C2C	2.18	1.48	1.43
2	D	760	HDD	CBA-CGA	2.18	1.55	1.50
2	C	760	HDD	CMB-C2B	2.18	1.55	1.50
2	D	760	HDD	CMB-C2B	2.18	1.55	1.50
2	B	760	HDD	C4A-C3A	2.17	1.48	1.43
2	D	760	HDD	C2A-C3A	-2.11	1.33	1.38
2	B	760	HDD	C4D-ND	-2.09	1.34	1.37
2	B	760	HDD	C2A-C3A	-2.09	1.33	1.38
2	A	760	HDD	C1A-C2A	2.05	1.48	1.44
2	A	760	HDD	C3C-C4C	2.04	1.48	1.42
2	A	760	HDD	CBA-CAA	2.04	1.59	1.51
2	D	760	HDD	CMA-C3A	2.03	1.54	1.50
2	B	760	HDD	C3C-C2C	-2.01	1.34	1.41

All (145) bond angle outliers are listed below:

Mol	Chain	Res	Type	Atoms	Z	Observed(°)	Ideal(°)
2	B	760	HDD	CHD-C1D-ND	11.36	139.94	124.28
2	A	760	HDD	C4B-C3B-C2B	10.87	116.24	106.81
2	C	760	HDD	C4B-C3B-C2B	10.77	116.15	106.81
2	B	760	HDD	C4B-C3B-C2B	10.50	115.92	106.81
2	D	760	HDD	C4B-C3B-C2B	10.43	115.86	106.81
2	A	760	HDD	C3D-O1D-CGD	10.35	120.80	111.14
2	D	760	HDD	C3D-O1D-CGD	10.05	120.52	111.14
2	D	760	HDD	CHD-C1D-ND	9.93	137.97	124.28
2	C	760	HDD	C3D-O1D-CGD	9.61	120.10	111.14
2	C	760	HDD	OND-C2D-CMD	-9.46	91.16	109.45
2	C	760	HDD	CHD-C1D-ND	8.86	136.50	124.28
2	A	760	HDD	CHD-C1D-ND	8.64	136.19	124.28
2	B	760	HDD	CHC-C4B-NB	8.08	133.25	124.45
2	C	760	HDD	CHC-C4B-NB	7.79	132.93	124.45
2	D	760	HDD	OND-C2D-CMD	-7.61	94.74	109.45
2	D	760	HDD	C3C-C4C-NC	-7.59	103.41	109.80

Continued on next page...

Continued from previous page...

Mol	Chain	Res	Type	Atoms	Z	Observed(°)	Ideal(°)
2	A	760	HDD	C3C-C4C-NC	-7.47	103.51	109.80
2	A	760	HDD	CHC-C4B-NB	7.39	132.50	124.45
2	C	760	HDD	C3C-C4C-NC	-7.11	103.81	109.80
2	A	760	HDD	O1D-C3D-CAD	-6.85	90.40	103.06
2	B	760	HDD	OND-C2D-CMD	-6.80	96.29	109.45
2	B	760	HDD	C3B-C2B-C1B	-6.66	100.74	107.05
2	A	760	HDD	O1D-CGD-CBD	-6.55	104.19	110.17
2	A	760	HDD	C3B-C2B-C1B	-6.53	100.87	107.05
2	D	760	HDD	CHA-C4D-ND	-6.43	115.42	124.28
2	B	760	HDD	C3C-C4C-NC	-6.41	104.40	109.80
2	C	760	HDD	O1D-CGD-CBD	-6.26	104.46	110.17
2	C	760	HDD	CHA-C4D-ND	-6.07	115.91	124.28
2	D	760	HDD	C3B-C2B-C1B	-5.94	101.43	107.05
2	C	760	HDD	C3B-C2B-C1B	-5.68	101.67	107.05
2	A	760	HDD	C4C-CHD-C1D	-5.67	114.79	125.81
2	A	760	HDD	CHA-C4D-ND	-5.67	116.47	124.28
2	B	760	HDD	C3D-O1D-CGD	5.65	116.41	111.14
2	B	760	HDD	C2D-C1D-CHD	-5.60	115.56	124.27
2	C	760	HDD	C4C-CHD-C1D	-5.52	115.07	125.81
2	D	760	HDD	CHC-C4B-NB	5.29	130.22	124.45
2	B	760	HDD	C4C-CHD-C1D	-5.29	115.53	125.81
2	D	760	HDD	O1D-C3D-CAD	-5.13	93.58	103.06
2	B	760	HDD	C2A-C1A-NA	-5.12	104.47	110.15
2	C	760	HDD	C4B-NB-C1B	5.04	114.03	105.82
2	A	760	HDD	CHD-C4C-NC	5.02	132.96	123.86
2	C	760	HDD	O1D-C3D-CAD	-4.94	93.92	103.06
2	B	760	HDD	CHA-C4D-ND	-4.77	117.70	124.28
2	B	760	HDD	O1D-C3D-CAD	-4.70	94.37	103.06
2	D	760	HDD	C2A-C1A-NA	-4.69	104.95	110.15
2	C	760	HDD	C2A-C1A-NA	-4.66	104.99	110.15
2	C	760	HDD	C2D-C1D-CHD	-4.62	117.09	124.27
2	B	760	HDD	CAA-CBA-CGA	-4.61	101.44	113.67
2	A	760	HDD	CBD-CAD-C3D	-4.60	97.43	103.98
2	A	760	HDD	OND-C2D-CMD	-4.57	100.61	109.45
2	B	760	HDD	O1D-CGD-CBD	-4.52	106.05	110.17
2	D	760	HDD	C4B-NB-C1B	4.46	113.09	105.82
2	A	760	HDD	C4B-NB-C1B	4.35	112.91	105.82
2	D	760	HDD	C4C-CHD-C1D	-4.32	117.41	125.81
2	B	760	HDD	O2A-CGA-O1A	4.27	134.32	123.33
2	B	760	HDD	C1A-C2A-C3A	4.25	113.45	106.87
2	B	760	HDD	CAB-C3B-C4B	-4.18	114.83	124.82
2	D	760	HDD	CHD-C4C-NC	4.12	131.33	123.86

Continued on next page...

Continued from previous page...

Mol	Chain	Res	Type	Atoms	Z	Observed(°)	Ideal(°)
2	B	760	HDD	C4B-NB-C1B	4.11	112.52	105.82
2	D	760	HDD	C1A-C2A-C3A	4.05	113.14	106.87
2	D	760	HDD	CHB-C1B-NB	4.04	128.85	124.45
2	C	760	HDD	C1A-C2A-C3A	4.02	113.08	106.87
2	A	760	HDD	C2A-C1A-NA	-4.00	105.71	110.15
2	B	760	HDD	CHC-C1C-NC	4.00	131.12	123.86
2	D	760	HDD	CAA-CBA-CGA	-3.99	103.07	113.67
2	D	760	HDD	C2D-C1D-CHD	-3.99	118.06	124.27
2	B	760	HDD	CHD-C4C-NC	3.98	131.08	123.86
2	C	760	HDD	CHD-C4C-NC	3.91	130.96	123.86
2	C	760	HDD	CAB-C3B-C4B	-3.89	115.53	124.82
2	B	760	HDD	C4C-NC-C1C	3.82	112.05	105.82
2	A	760	HDD	CAB-C3B-C4B	-3.74	115.88	124.82
2	A	760	HDD	O2A-CGA-O1A	3.74	132.96	123.33
2	D	760	HDD	O1A-CGA-CBA	-3.68	111.41	123.09
2	D	760	HDD	O1D-CGD-CBD	-3.67	106.83	110.17
2	D	760	HDD	O2A-CGA-O1A	3.66	132.73	123.33
2	D	760	HDD	C3D-C4D-CHA	3.61	134.62	124.14
2	C	760	HDD	CHC-C1C-NC	3.58	130.35	123.86
2	A	760	HDD	C2D-C1D-CHD	-3.57	118.72	124.27
2	A	760	HDD	CAA-CBA-CGA	-3.53	104.29	113.67
2	C	760	HDD	C3D-C4D-CHA	3.51	134.33	124.14
2	D	760	HDD	CAB-C3B-C4B	-3.49	116.48	124.82
2	A	760	HDD	CMB-C2B-C1B	3.48	130.85	124.73
2	C	760	HDD	C4C-NC-C1C	3.35	111.29	105.82
2	A	760	HDD	C1A-C2A-C3A	3.34	112.03	106.87
2	C	760	HDD	CAA-CBA-CGA	-3.29	104.93	113.67
2	D	760	HDD	O1D-CGD-O2D	3.27	123.57	120.81
2	C	760	HDD	C4A-C3A-C2A	-3.26	103.09	106.82
2	A	760	HDD	OND-C2D-C3D	-3.19	102.98	110.46
2	B	760	HDD	C3D-C4D-CHA	3.19	133.40	124.14
2	C	760	HDD	O1A-CGA-CBA	-3.18	113.02	123.09
2	B	760	HDD	C4A-C3A-C2A	-3.17	103.18	106.82
2	B	760	HDD	O1A-CGA-CBA	-3.15	113.09	123.09
2	C	760	HDD	C4C-C3C-C2C	3.15	111.21	107.30
2	D	760	HDD	C2C-C1C-NC	-3.14	105.10	110.14
2	A	760	HDD	C4C-C3C-C2C	3.13	111.19	107.30
2	C	760	HDD	CHB-C4A-NA	3.09	129.47	123.86
2	C	760	HDD	CMD-C2D-C3D	3.08	123.21	115.11
2	A	760	HDD	O1A-CGA-CBA	-3.07	113.35	123.09
2	A	760	HDD	C3D-C4D-CHA	3.07	133.05	124.14
2	A	760	HDD	C4C-NC-C1C	3.03	110.76	105.82

Continued on next page...

Continued from previous page...

Mol	Chain	Res	Type	Atoms	Z	Observed(°)	Ideal(°)
2	C	760	HDD	O2A-CGA-O1A	3.00	131.03	123.33
2	D	760	HDD	CMD-C2D-C1D	2.96	117.70	112.68
2	D	760	HDD	C4A-C3A-C2A	-2.95	103.43	106.82
2	B	760	HDD	C4C-C3C-C2C	2.91	110.93	107.30
2	D	760	HDD	C4C-C3C-C2C	2.91	110.92	107.30
2	D	760	HDD	C4C-NC-C1C	2.86	110.48	105.82
2	D	760	HDD	OND-C2D-C3D	-2.76	103.99	110.46
2	B	760	HDD	CAA-C2A-C1A	-2.68	119.69	124.94
2	A	760	HDD	CHB-C1B-NB	2.68	127.37	124.45
2	A	760	HDD	C2C-C1C-NC	-2.68	105.85	110.14
2	C	760	HDD	CMB-C2B-C1B	2.65	129.39	124.73
2	C	760	HDD	OND-C2D-C3D	-2.64	104.27	110.46
2	A	760	HDD	CHC-C1C-NC	2.64	128.65	123.86
2	A	760	HDD	CMA-C3A-C2A	2.64	131.22	125.62
2	B	760	HDD	O1D-CGD-O2D	2.58	122.99	120.81
2	B	760	HDD	CHB-C1B-NB	2.52	127.20	124.45
2	B	760	HDD	OND-C2D-C3D	-2.52	104.55	110.46
2	D	760	HDD	CMC-C2C-C1C	2.49	129.21	125.42
2	C	760	HDD	CHB-C4A-C3A	-2.44	120.33	127.43
2	A	760	HDD	CHB-C4A-C3A	-2.43	120.38	127.43
2	D	760	HDD	CAA-C2A-C1A	-2.40	120.25	124.94
2	A	760	HDD	CBC-CAC-C3C	-2.39	115.57	127.53
2	B	760	HDD	CHA-C1A-NA	2.37	128.15	123.86
2	A	760	HDD	C4A-C3A-C2A	-2.33	104.15	106.82
2	C	760	HDD	CBD-CAD-C3D	2.31	107.28	103.98
2	D	760	HDD	C3C-C2C-C1C	-2.31	104.45	107.17
2	C	760	HDD	CHB-C1B-NB	2.30	126.96	124.45
2	B	760	HDD	CBD-CAD-C3D	-2.27	100.74	103.98
2	C	760	HDD	O1D-CGD-O2D	2.26	122.71	120.81
2	C	760	HDD	CMA-C3A-C2A	2.24	130.38	125.62
2	B	760	HDD	C2C-C1C-NC	-2.23	106.57	110.14
2	C	760	HDD	CHC-C1C-C2C	-2.22	120.97	127.43
2	D	760	HDD	CHC-C4B-C3B	2.21	128.94	125.21
2	D	760	HDD	CMA-C3A-C2A	2.21	130.30	125.62
2	C	760	HDD	CBC-CAC-C3C	-2.18	116.61	127.53
2	A	760	HDD	CHA-C1A-NA	2.18	127.81	123.86
2	B	760	HDD	CMA-C3A-C2A	2.16	130.21	125.62
2	A	760	HDD	CHB-C4A-NA	2.16	127.78	123.86
2	A	760	HDD	CMD-C2D-C1D	-2.15	109.03	112.68
2	A	760	HDD	O1D-CGD-O2D	2.05	122.54	120.81
2	B	760	HDD	CHB-C4A-NA	2.04	127.57	123.86
2	A	760	HDD	C3C-C2C-C1C	-2.04	104.77	107.17

Continued on next page...

Continued from previous page...

Mol	Chain	Res	Type	Atoms	Z	Observed(°)	Ideal(°)
2	C	760	HDD	CHA-C1A-NA	2.03	127.55	123.86
2	C	760	HDD	C2C-C1C-NC	-2.03	106.89	110.14
2	B	760	HDD	CMB-C2B-C1B	2.01	128.27	124.73

There are no chirality outliers.

All (10) torsion outliers are listed below:

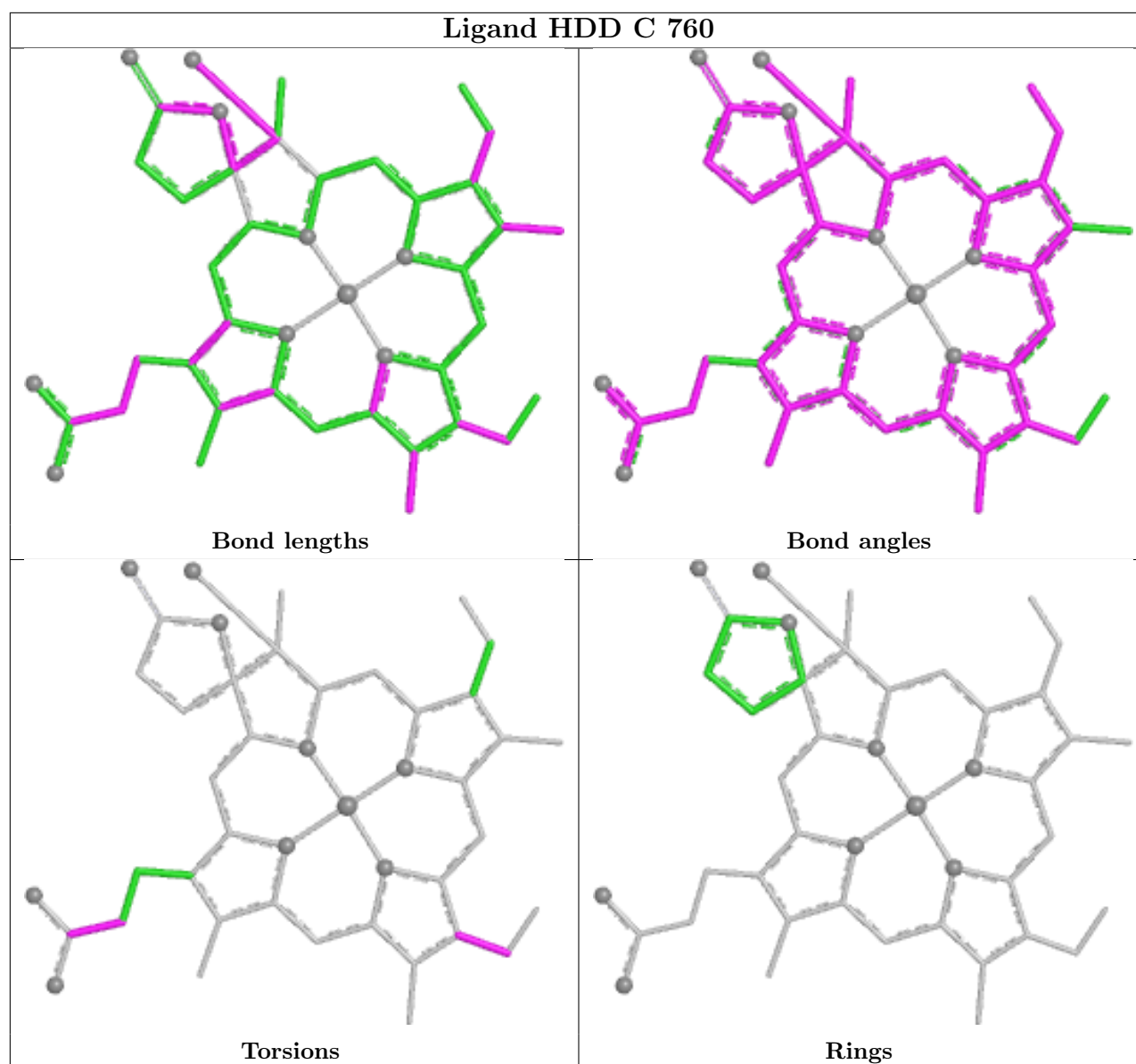
Mol	Chain	Res	Type	Atoms
2	A	760	HDD	CAA-CBA-CGA-O1A
2	D	760	HDD	CAA-CBA-CGA-O1A
2	B	760	HDD	CAA-CBA-CGA-O1A
2	A	760	HDD	CAA-CBA-CGA-O2A
2	C	760	HDD	CAA-CBA-CGA-O2A
2	B	760	HDD	CAA-CBA-CGA-O2A
2	D	760	HDD	CAA-CBA-CGA-O2A
2	C	760	HDD	CAA-CBA-CGA-O1A
2	D	760	HDD	C2C-C3C-CAC-CBC
2	C	760	HDD	C2B-C3B-CAB-CBB

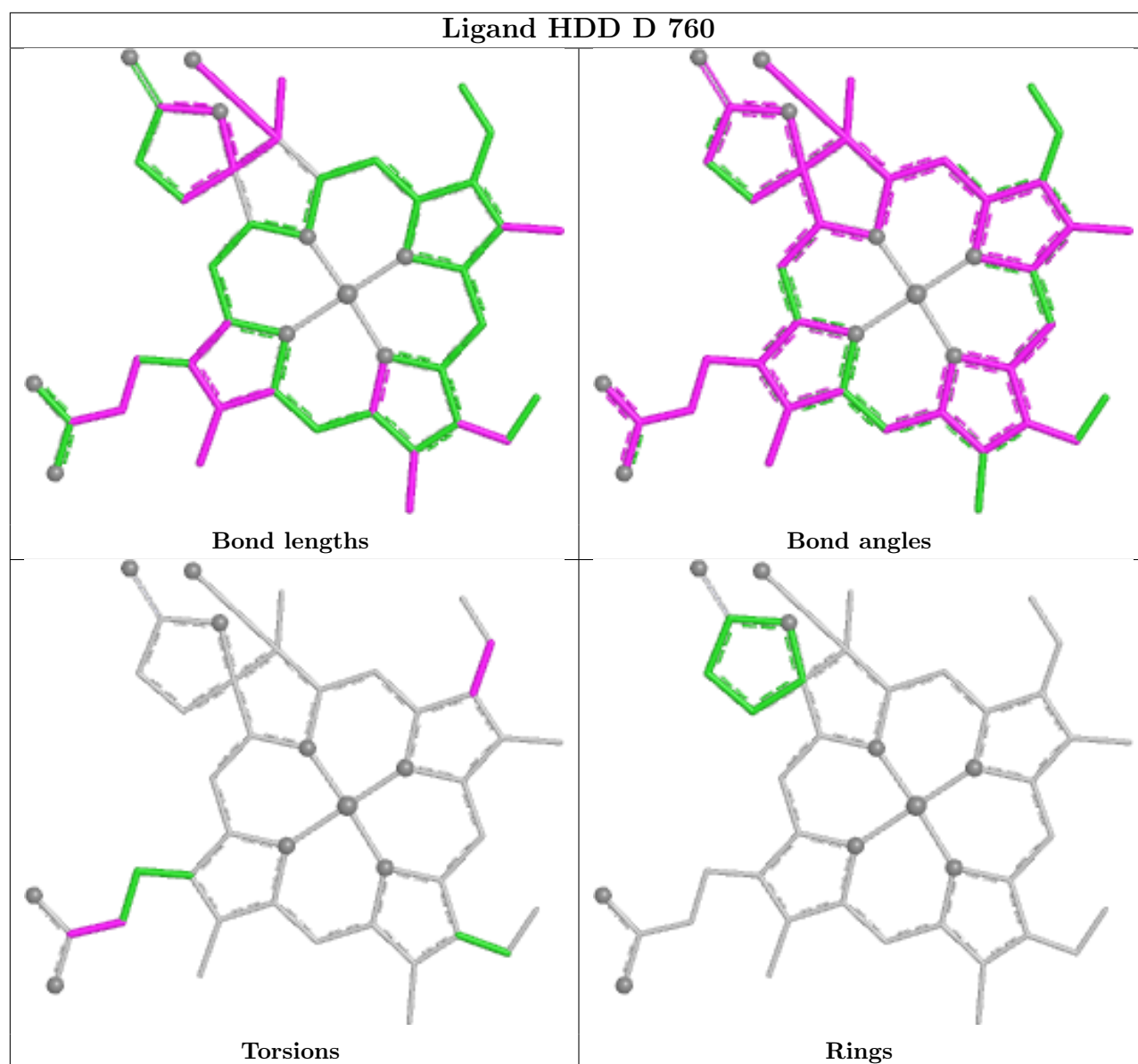
There are no ring outliers.

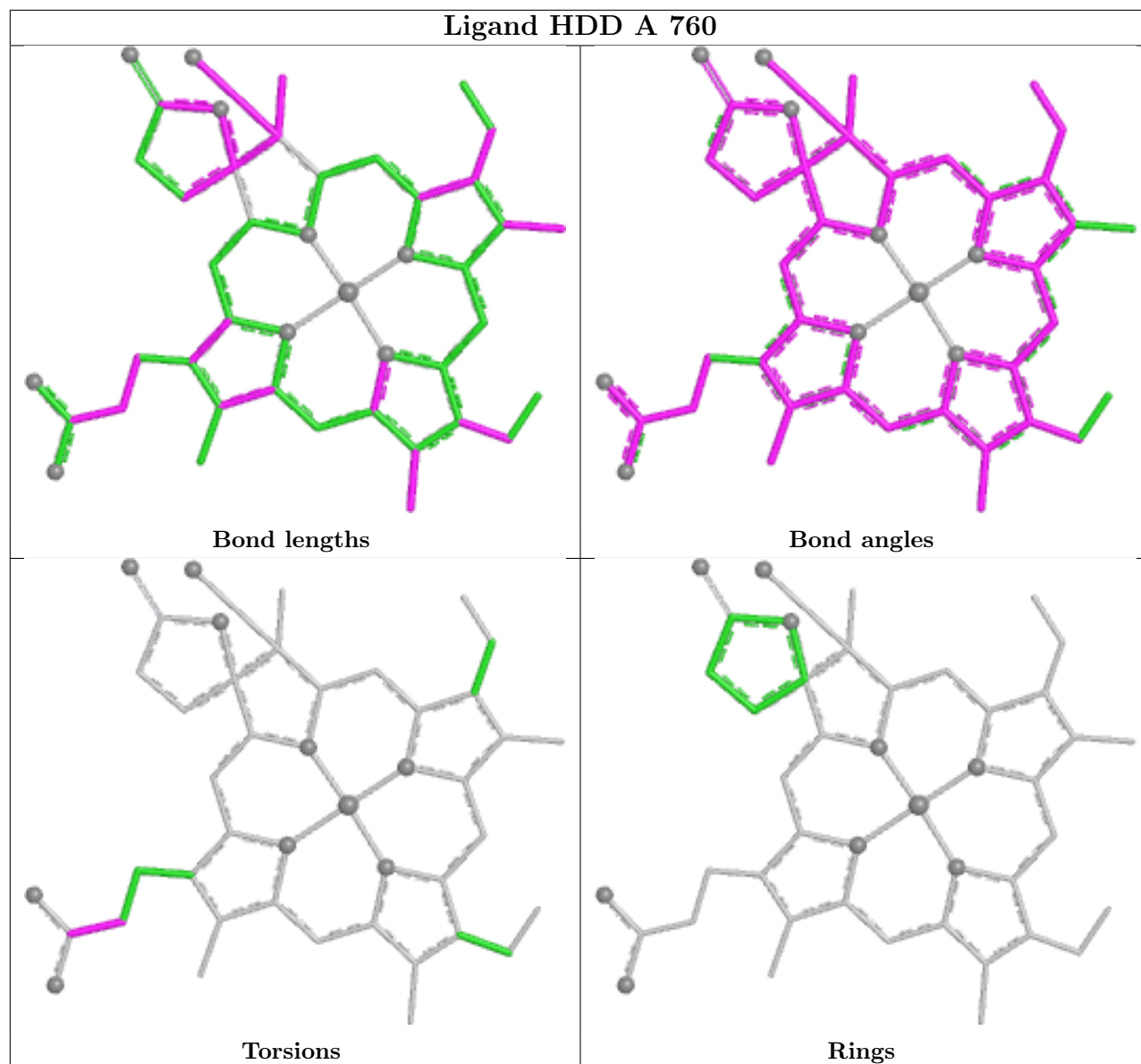
4 monomers are involved in 12 short contacts:

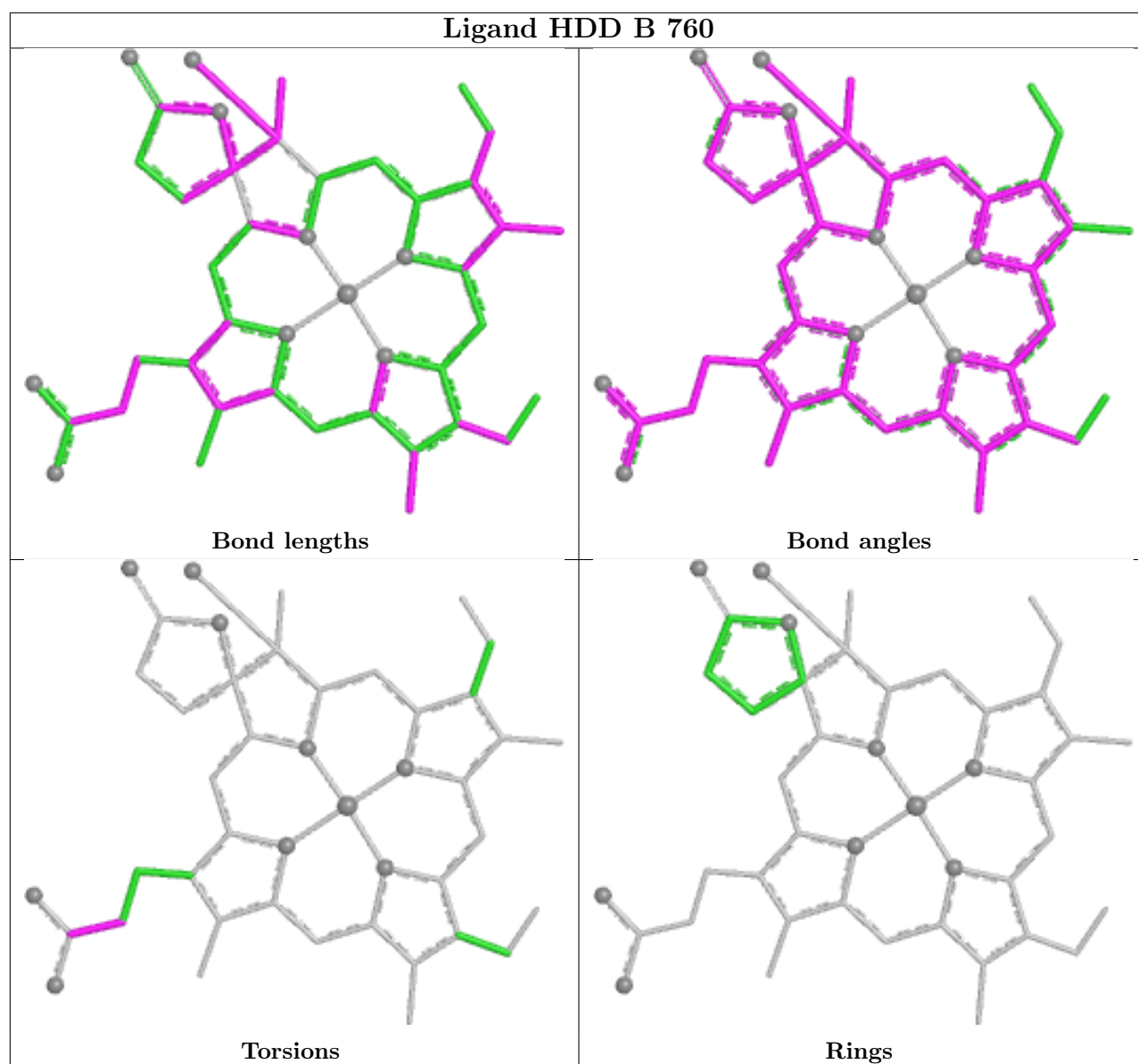
Mol	Chain	Res	Type	Clashes	Symm-Clashes
2	C	760	HDD	2	0
2	D	760	HDD	1	0
2	A	760	HDD	6	0
2	B	760	HDD	3	0

The following is a two-dimensional graphical depiction of Mogul quality analysis of bond lengths, bond angles, torsion angles, and ring geometry for all instances of the Ligand of Interest. In addition, ligands with molecular weight > 250 and outliers as shown on the validation Tables will also be included. For torsion angles, if less than 5% of the Mogul distribution of torsion angles is within 10 degrees of the torsion angle in question, then that torsion angle is considered an outlier. Any bond that is central to one or more torsion angles identified as an outlier by Mogul will be highlighted in the graph. For rings, the root-mean-square deviation (RMSD) between the ring in question and similar rings identified by Mogul is calculated over all ring torsion angles. If the average RMSD is greater than 60 degrees and the minimal RMSD between the ring in question and any Mogul-identified rings is also greater than 60 degrees, then that ring is considered an outlier. The outliers are highlighted in purple. The color gray indicates Mogul did not find sufficient equivalents in the CSD to analyse the geometry.









5.7 Other polymers [i](#)

There are no such residues in this entry.

5.8 Polymer linkage issues [i](#)

There are no chain breaks in this entry.

6 Fit of model and data

6.1 Protein, DNA and RNA chains

In the following table, the column labelled ‘#RSRZ > 2’ contains the number (and percentage) of RSRZ outliers, followed by percent RSRZ outliers for the chain as percentile scores relative to all X-ray entries and entries of similar resolution. The OWAB column contains the minimum, median, 95th percentile and maximum values of the occupancy-weighted average B-factor per residue. The column labelled ‘Q < 0.9’ lists the number of (and percentage) of residues with an average occupancy less than 0.9.

Mol	Chain	Analysed	<RSRZ>	#RSRZ>2	OWAB(Å ²)	Q<0.9
1	A	727/753 (96%)	-0.51	12 (1%) 69 72	3, 8, 24, 47	1 (0%)
1	B	727/753 (96%)	-0.46	11 (1%) 72 75	4, 9, 27, 45	1 (0%)
1	C	727/753 (96%)	-0.46	7 (0%) 79 82	3, 9, 26, 44	1 (0%)
1	D	727/753 (96%)	-0.52	6 (0%) 82 85	3, 9, 25, 45	1 (0%)
All	All	2908/3012 (96%)	-0.49	36 (1%) 76 79	3, 9, 26, 47	4 (0%)

All (36) RSRZ outliers are listed below:

Mol	Chain	Res	Type	RSRZ
1	A	27	ASP	7.0
1	A	711	ALA	6.9
1	A	28	SER	6.8
1	C	27	ASP	5.9
1	D	27	ASP	5.0
1	B	27	ASP	4.8
1	A	710	ILE	4.6
1	C	28	SER	4.4
1	A	712	ASP	4.3
1	A	713	GLN	4.1
1	D	751	ILE	3.9
1	C	724	ALA	3.4
1	B	726	GLY	3.2
1	C	726	GLY	3.1
1	B	710	ILE	3.1
1	A	749	ASP	3.1
1	C	725	ASP	3.0
1	D	749	ASP	2.9
1	C	749	ASP	2.8
1	D	750	LYS	2.8
1	B	751	ILE	2.7

Continued on next page...

Continued from previous page...

Mol	Chain	Res	Type	RSRZ
1	D	28	SER	2.6
1	B	28	SER	2.6
1	B	568	ASP	2.5
1	B	750	LYS	2.4
1	B	724	ALA	2.3
1	B	32	GLU	2.3
1	B	37	ARG	2.3
1	B	612	ARG	2.3
1	D	32	GLU	2.3
1	C	751	ILE	2.2
1	A	707	THR	2.2
1	A	32	GLU	2.2
1	A	29	LEU	2.2
1	A	750	LYS	2.1
1	A	716	GLU	2.0

6.2 Non-standard residues in protein, DNA, RNA chains [i](#)

There are no non-standard protein/DNA/RNA residues in this entry.

6.3 Carbohydrates [i](#)

There are no oligosaccharides in this entry.

6.4 Ligands [i](#)

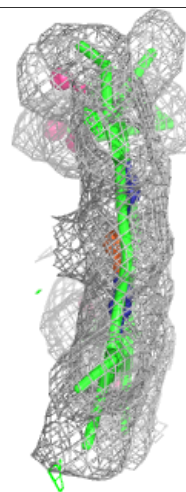
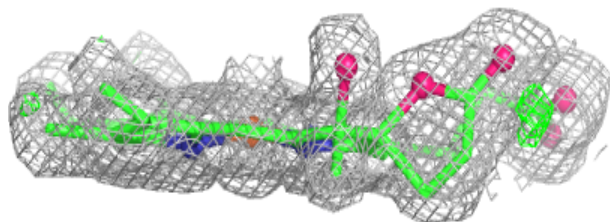
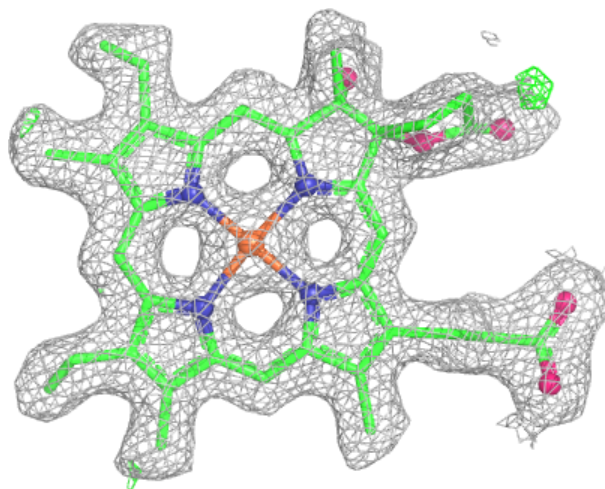
In the following table, the Atoms column lists the number of modelled atoms in the group and the number defined in the chemical component dictionary. The B-factors column lists the minimum, median, 95th percentile and maximum values of B factors of atoms in the group. The column labelled 'Q< 0.9' lists the number of atoms with occupancy less than 0.9.

Mol	Type	Chain	Res	Atoms	RSCC	RSR	B-factors(\AA^2)	Q<0.9
2	HDD	A	760	44/44	0.98	0.05	3,5,9,10	0
2	HDD	B	760	44/44	0.98	0.05	4,6,9,11	0
2	HDD	C	760	44/44	0.98	0.05	4,7,11,13	0
2	HDD	D	760	44/44	0.99	0.04	3,5,9,10	0

The following is a graphical depiction of the model fit to experimental electron density of all instances of the Ligand of Interest. In addition, ligands with molecular weight > 250 and outliers as shown on the geometry validation Tables will also be included. Each fit is shown from different orientation to approximate a three-dimensional view.

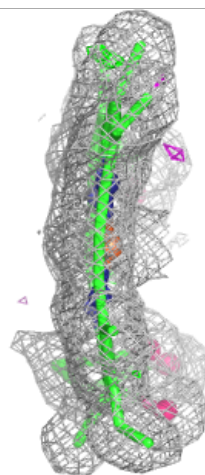
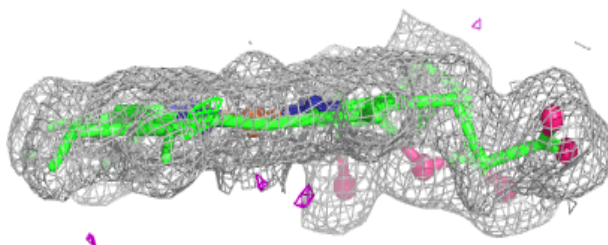
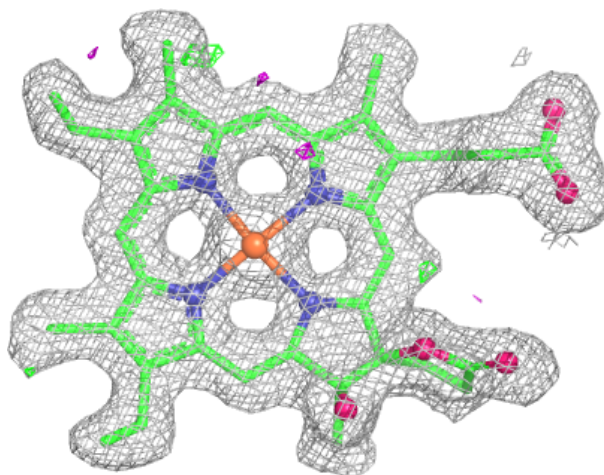
Electron density around HDD A 760:

$2mF_o-DF_c$ (at 0.7 rmsd) in gray
 mF_o-DF_c (at 3 rmsd) in purple (negative)
and green (positive)



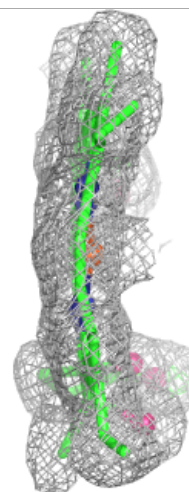
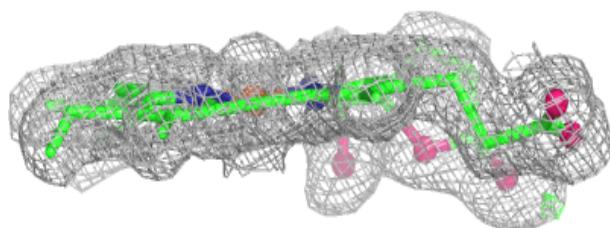
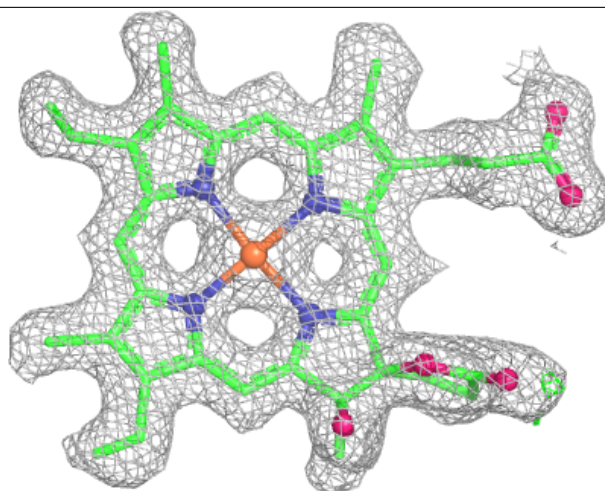
Electron density around HDD B 760:

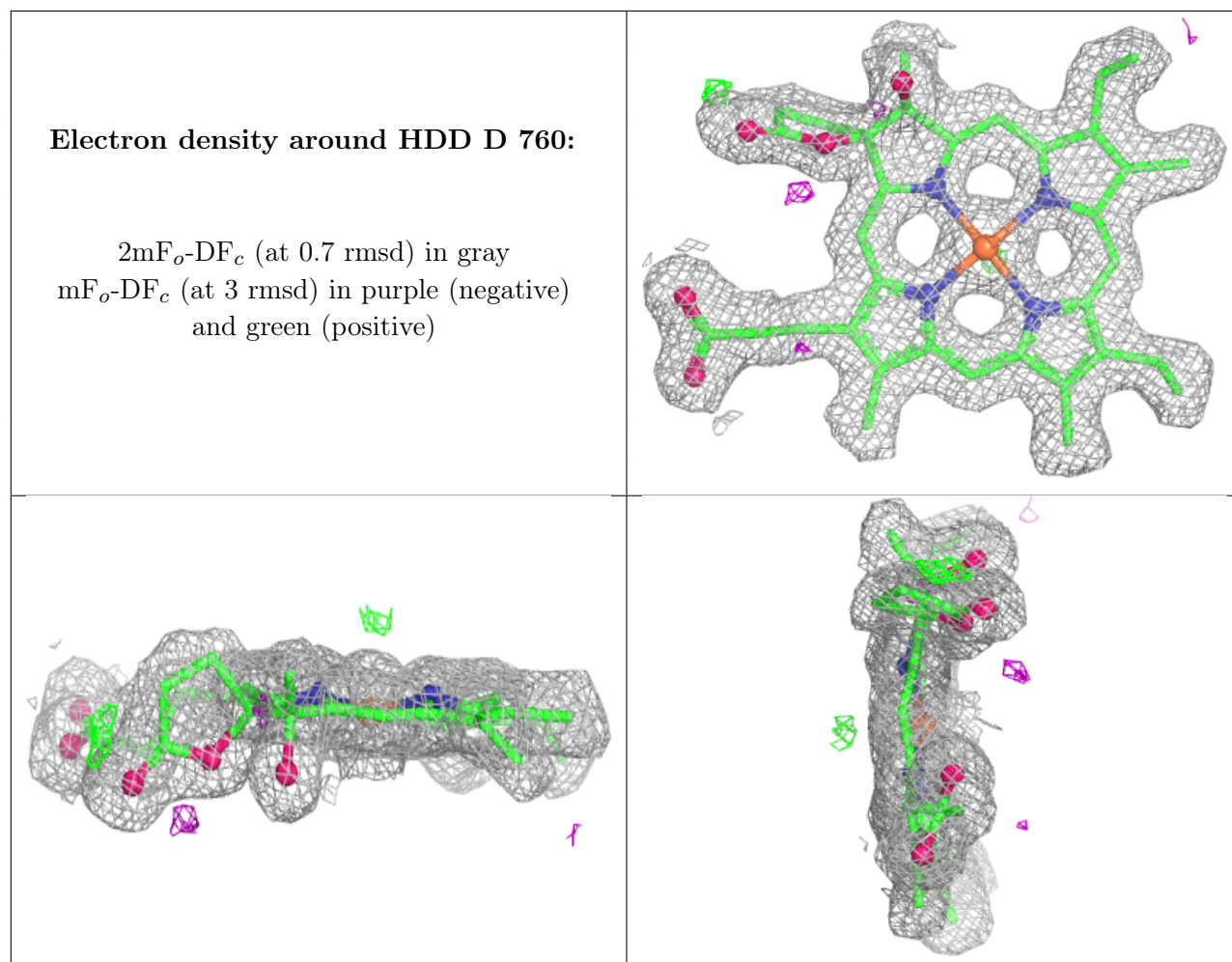
$2mF_o-DF_c$ (at 0.7 rmsd) in gray
 mF_o-DF_c (at 3 rmsd) in purple (negative)
and green (positive)



Electron density around HDD C 760:

$2mF_o-DF_c$ (at 0.7 rmsd) in gray
 mF_o-DF_c (at 3 rmsd) in purple (negative)
and green (positive)





6.5 Other polymers [i](#)

There are no such residues in this entry.