



# Full wwPDB X-ray Structure Validation Report ⓘ

Mar 9, 2026 – 04:29 AM UTC

PDB ID : 1KPG / pdb\_00001kpg  
Title : Crystal Structure of mycolic acid cyclopropane synthase CmaA1 complexed with SAH and CTAB  
Authors : Huang, C.-C.; Smith, C.V.; Jacobs Jr., W.R.; Glickman, M.S.; Sacchettini, J.C.; TB Structural Genomics Consortium (TBSGC)  
Deposited on : 2001-12-30  
Resolution : 2.00 Å(reported)

This is a Full wwPDB X-ray Structure Validation Report for a publicly released PDB entry.

We welcome your comments at [validation@mail.wwpdb.org](mailto:validation@mail.wwpdb.org)

A user guide is available at

<https://www.wwpdb.org/validation/2017/XrayValidationReportHelp>

with specific help available everywhere you see the ⓘ symbol.

The types of validation reports are described at

<http://www.wwpdb.org/validation/2017/FAQs#types>.

---

The following versions of software and data (see [references ⓘ](#)) were used in the production of this report:

MolProbity	:	4-5-2 with Phenix2.0
Mogul	:	2022.3.0, CSD as543be (2022)
Xtrriage (Phenix)	:	NOT EXECUTED
EDS	:	NOT EXECUTED
Buster-report	:	wwPDB partial adaption of 1.1.7 (2018)
Percentile statistics	:	20250101.v01 (using entries in the PDB archive January 1st 2025)
Ideal geometry (proteins)	:	Engh & Huber (2001)
Ideal geometry (DNA, RNA)	:	Parkinson et al. (1996)
Validation Pipeline (wwPDB-VP)	:	2.49

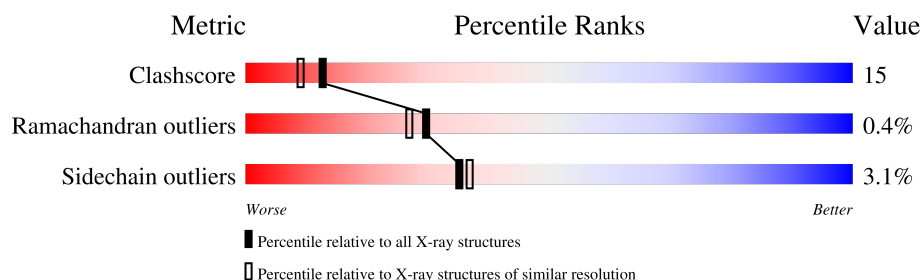
# 1 Overall quality at a glance

The following experimental techniques were used to determine the structure:

## *X-RAY DIFFRACTION*

The reported resolution of this entry is 2.00 Å.

Percentile scores (ranging between 0-100) for global validation metrics of the entry are shown in the following graphic. The table shows the number of entries on which the scores are based.



Metric	Whole archive (#Entries)	Similar resolution (#Entries, resolution range(Å))
Clashscore	190562	11152 (2.00-2.00)
Ramachandran outliers	187476	11031 (2.00-2.00)
Sidechain outliers	187428	11029 (2.00-2.00)

The table below summarises the geometric issues observed across the polymeric chains and their fit to the electron density. The red, orange, yellow and green segments of the lower bar indicate the fraction of residues that contain outliers for  $\geq 3$ , 2, 1 and 0 types of geometric quality criteria respectively. A grey segment represents the fraction of residues that are not modelled. The numeric value for each fraction is indicated below the corresponding segment, with a dot representing fractions  $\leq 5\%$ .

Note EDS was not executed.

Mol	Chain	Length	Quality of chain
1	A	287	<div> <div>73%</div> <div>25%</div> <div>..</div> </div>
1	B	287	<div> <div>72%</div> <div>24%</div> <div>..</div> </div>
1	C	287	<div> <div>69%</div> <div>28%</div> <div>..</div> </div>
1	D	287	<div> <div>69%</div> <div>27%</div> <div>..</div> </div>

## 2 Entry composition

There are 5 unique types of molecules in this entry. The entry contains 9906 atoms, of which 0 are hydrogens and 0 are deuteriums.

In the tables below, the ZeroOcc column contains the number of atoms modelled with zero occupancy, the AltConf column contains the number of residues with at least one atom in alternate conformation and the Trace column contains the number of residues modelled with at most 2 atoms.

- Molecule 1 is a protein called CYCLOPROPANE-FATTY-ACYL-PHOSPHOLIPID SYNTHASE 1.

Mol	Chain	Residues	Atoms						ZeroOcc	AltConf	Trace
1	A	285	Total	C	N	O	S	Se	0	0	0
			2269	1452	388	415	5	9			
1	B	284	Total	C	N	O	S	Se	0	0	0
			2261	1448	387	412	5	9			
1	C	285	Total	C	N	O	S	Se	0	0	0
			2269	1452	388	415	5	9			
1	D	283	Total	C	N	O	S	Se	0	0	0
			2252	1443	386	409	5	9			

There are 40 discrepancies between the modelled and reference sequences:

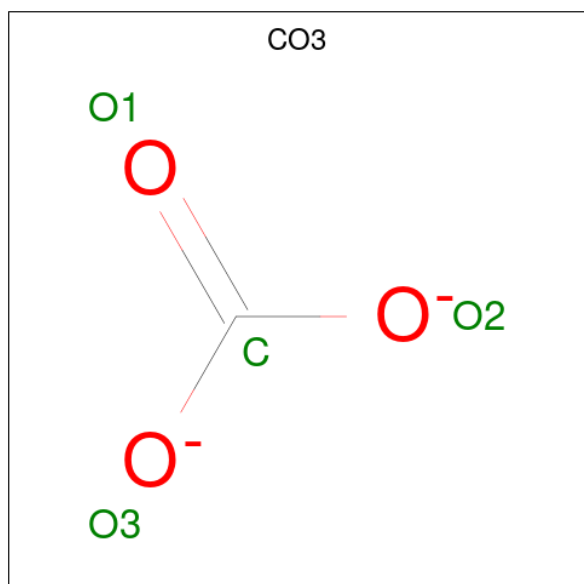
Chain	Residue	Modelled	Actual	Comment	Reference
A	1	MSE	MET	cloning artifact	UNP Q11195
A	43	MSE	MET	cloning artifact	UNP Q11195
A	66	MSE	MET	cloning artifact	UNP Q11195
A	79	MSE	MET	cloning artifact	UNP Q11195
A	80	MSE	MET	cloning artifact	UNP Q11195
A	164	MSE	MET	cloning artifact	UNP Q11195
A	184	MSE	MET	cloning artifact	UNP Q11195
A	210	MSE	MET	cloning artifact	UNP Q11195
A	263	MSE	MET	cloning artifact	UNP Q11195
A	272	MSE	MET	cloning artifact	UNP Q11195
B	1	MSE	MET	cloning artifact	UNP Q11195
B	43	MSE	MET	cloning artifact	UNP Q11195
B	66	MSE	MET	cloning artifact	UNP Q11195
B	79	MSE	MET	cloning artifact	UNP Q11195
B	80	MSE	MET	cloning artifact	UNP Q11195
B	164	MSE	MET	cloning artifact	UNP Q11195
B	184	MSE	MET	cloning artifact	UNP Q11195
B	210	MSE	MET	cloning artifact	UNP Q11195
B	263	MSE	MET	cloning artifact	UNP Q11195
B	272	MSE	MET	cloning artifact	UNP Q11195

*Continued on next page...*

Continued from previous page...

Chain	Residue	Modelled	Actual	Comment	Reference
C	1	MSE	MET	cloning artifact	UNP Q11195
C	43	MSE	MET	cloning artifact	UNP Q11195
C	66	MSE	MET	cloning artifact	UNP Q11195
C	79	MSE	MET	cloning artifact	UNP Q11195
C	80	MSE	MET	cloning artifact	UNP Q11195
C	164	MSE	MET	cloning artifact	UNP Q11195
C	184	MSE	MET	cloning artifact	UNP Q11195
C	210	MSE	MET	cloning artifact	UNP Q11195
C	263	MSE	MET	cloning artifact	UNP Q11195
C	272	MSE	MET	cloning artifact	UNP Q11195
D	1	MSE	MET	cloning artifact	UNP Q11195
D	43	MSE	MET	cloning artifact	UNP Q11195
D	66	MSE	MET	cloning artifact	UNP Q11195
D	79	MSE	MET	cloning artifact	UNP Q11195
D	80	MSE	MET	cloning artifact	UNP Q11195
D	164	MSE	MET	cloning artifact	UNP Q11195
D	184	MSE	MET	cloning artifact	UNP Q11195
D	210	MSE	MET	cloning artifact	UNP Q11195
D	263	MSE	MET	cloning artifact	UNP Q11195
D	272	MSE	MET	cloning artifact	UNP Q11195

- Molecule 2 is CARBONATE ION (CCD ID: CO3) (formula: CO<sub>3</sub>).



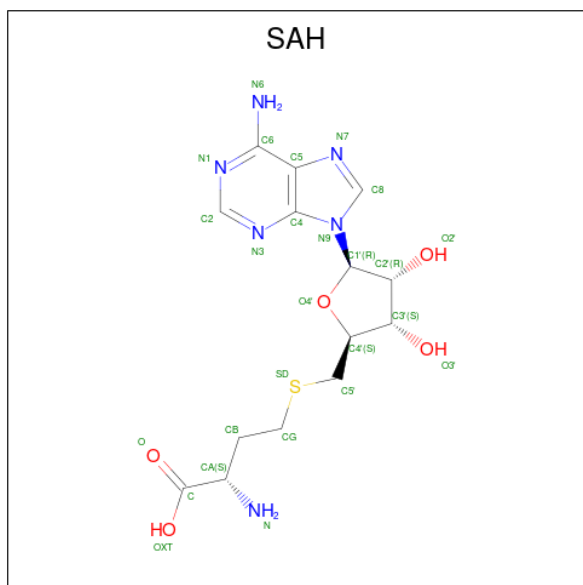
Mol	Chain	Residues	Atoms			ZeroOcc	AltConf
2	A	1	Total	C	O	0	0
			4	1	3		

Continued on next page...

Continued from previous page...

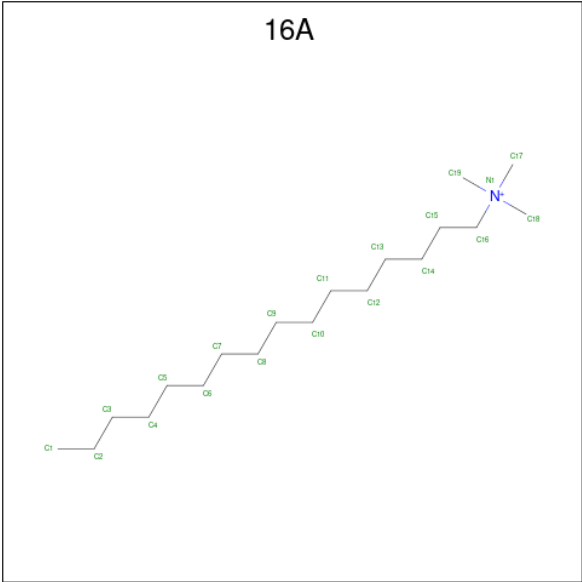
Mol	Chain	Residues	Atoms			ZeroOcc	AltConf
2	B	1	Total	C	O	0	0
			4	1	3		
2	C	1	Total	C	O	0	0
			4	1	3		
2	D	1	Total	C	O	0	0
			4	1	3		

- Molecule 3 is S-ADENOSYL-L-HOMOCYSTEINE (CCD ID: SAH) (formula:  $C_{14}H_{20}N_6O_5S$ ).



Mol	Chain	Residues	Atoms					ZeroOcc	AltConf
3	A	1	Total	C	N	O	S	0	0
			26	14	6	5	1		
3	B	1	Total	C	N	O	S	0	0
			26	14	6	5	1		
3	C	1	Total	C	N	O	S	0	0
			26	14	6	5	1		
3	D	1	Total	C	N	O	S	0	0
			26	14	6	5	1		

- Molecule 4 is CETYL-TRIMETHYL-AMMONIUM (CCD ID: 16A) (formula:  $C_{19}H_{42}N$ ).



Mol	Chain	Residues	Atoms			ZeroOcc	AltConf
4	A	1	Total	C	N	0	0
			20	19	1		
4	B	1	Total	C	N	0	0
			20	19	1		
4	C	1	Total	C	N	0	0
			20	19	1		
4	D	1	Total	C	N	0	0
			20	19	1		

- Molecule 5 is water.

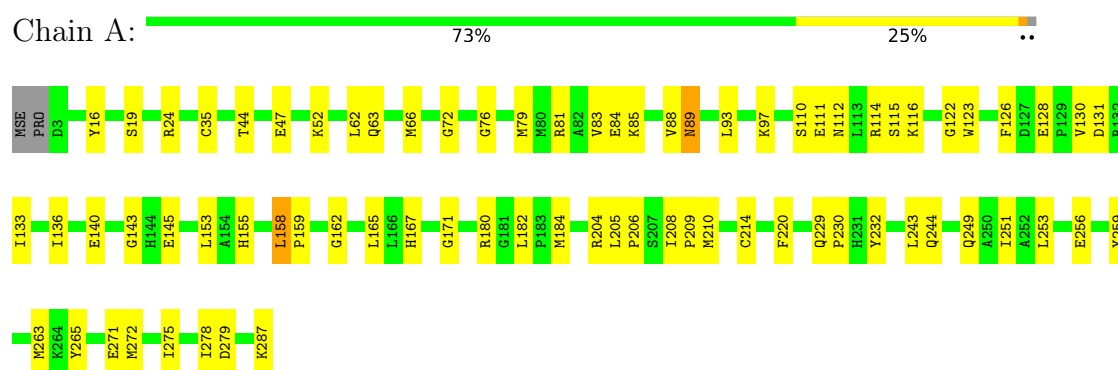
Mol	Chain	Residues	Atoms		ZeroOcc	AltConf
5	A	185	Total	O	0	0
			185	185		
5	B	140	Total	O	0	0
			140	140		
5	C	180	Total	O	0	0
			180	180		
5	D	150	Total	O	0	0
			150	150		

### 3 Residue-property plots [i](#)

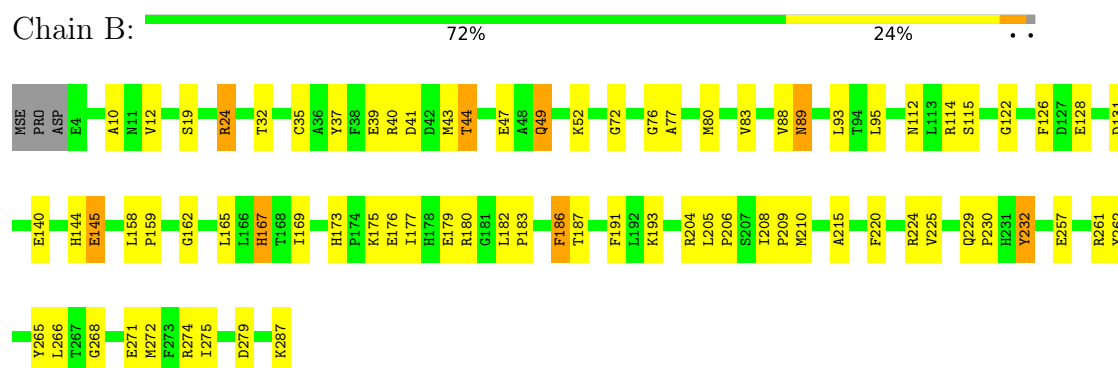
These plots are drawn for all protein, RNA, DNA and oligosaccharide chains in the entry. The first graphic for a chain summarises the proportions of the various outlier classes displayed in the second graphic. The second graphic shows the sequence view annotated by issues in geometry. Residues are color-coded according to the number of geometric quality criteria for which they contain at least one outlier: green = 0, yellow = 1, orange = 2 and red = 3 or more. Stretches of 2 or more consecutive residues without any outlier are shown as a green connector. Residues present in the sample, but not in the model, are shown in grey.

Note EDS was not executed.

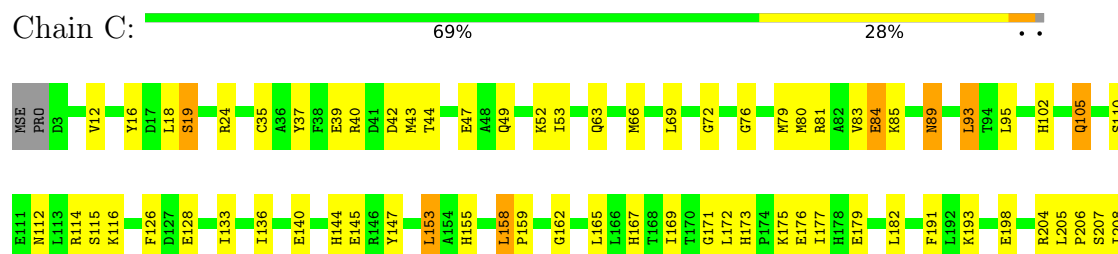
#### • Molecule 1: CYCLOPROPANE-FATTY-ACYL-PHOSPHOLIPID SYNTHASE 1



#### • Molecule 1: CYCLOPROPANE-FATTY-ACYL-PHOSPHOLIPID SYNTHASE 1

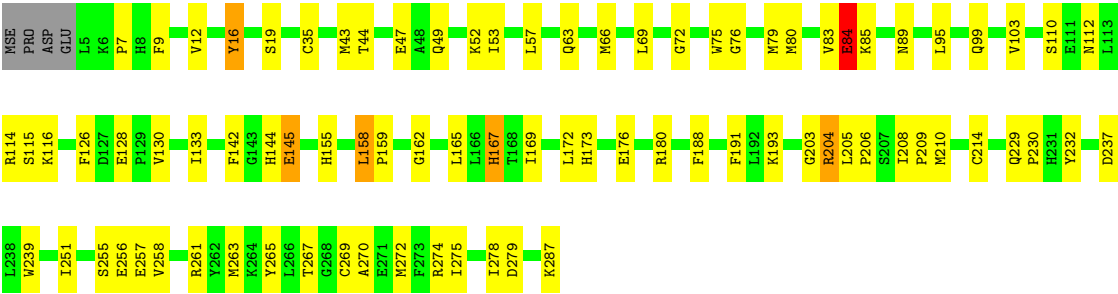


#### • Molecule 1: CYCLOPROPANE-FATTY-ACYL-PHOSPHOLIPID SYNTHASE 1





● Molecule 1: CYCLOPROPANE-FATTY-ACYL-PHOSPHOLIPID SYNTHASE 1





## 4 Data and refinement statistics

Xtriage (Phenix) and EDS were not executed - this section is therefore incomplete.

Property	Value	Source
Space group	P 43	Depositor
Cell constants a, b, c, $\alpha$ , $\beta$ , $\gamma$	77.32Å 77.32Å 173.49Å 90.00° 90.00° 90.00°	Depositor
Resolution (Å)	29.68 – 2.00	Depositor
% Data completeness (in resolution range)	95.9 (29.68-2.00)	Depositor
$R_{merge}$	(Not available)	Depositor
$R_{sym}$	0.07	Depositor
Refinement program	CNS 1.1	Depositor
R, $R_{free}$	0.191 , 0.233	Depositor
Estimated twinning fraction	No twinning to report.	Xtriage
Total number of atoms	9906	wwPDB-VP
Average B, all atoms (Å <sup>2</sup> )	19.0	wwPDB-VP

## 5 Model quality

### 5.1 Standard geometry

Bond lengths and bond angles in the following residue types are not validated in this section: SAH, CO3, 16A

The Z score for a bond length (or angle) is the number of standard deviations the observed value is removed from the expected value. A bond length (or angle) with  $|Z| > 5$  is considered an outlier worth inspection. RMSZ is the root-mean-square of all Z scores of the bond lengths (or angles).

Mol	Chain	Bond lengths		Bond angles	
		RMSZ	$\# Z  > 5$	RMSZ	$\# Z  > 5$
1	A	0.39	0/2314	0.87	4/3118 (0.1%)
1	B	0.35	0/2306	0.82	3/3107 (0.1%)
1	C	0.37	0/2314	0.87	3/3118 (0.1%)
1	D	0.36	0/2297	0.88	4/3095 (0.1%)
All	All	0.37	0/9231	0.86	14/12438 (0.1%)

There are no bond length outliers.

All (14) bond angle outliers are listed below:

Mol	Chain	Res	Type	Atoms	Z	Observed(°)	Ideal(°)
1	A	76	GLY	N-CA-C	7.56	125.42	115.36
1	C	76	GLY	N-CA-C	7.48	125.70	115.30
1	D	76	GLY	N-CA-C	7.27	125.77	115.30
1	D	16	TYR	N-CA-C	7.24	121.22	112.38
1	B	76	GLY	N-CA-C	7.04	124.73	115.36
1	D	84	GLU	N-CA-C	6.66	118.23	110.97
1	C	16	TYR	N-CA-C	6.19	119.93	112.38
1	A	16	TYR	N-CA-C	5.60	119.21	112.38
1	C	89	ASN	N-CA-C	-5.60	103.00	110.55
1	B	44	THR	N-CA-C	-5.34	103.64	110.53
1	D	239	TRP	N-CA-C	-5.19	105.70	111.36
1	A	184	MSE	N-CA-C	5.08	118.45	111.54
1	A	89	ASN	N-CA-C	-5.07	103.70	110.55
1	B	89	ASN	N-CA-C	-5.07	103.71	110.55

There are no chirality outliers.

There are no planarity outliers.

## 5.2 Too-close contacts ⓘ

In the following table, the Non-H and H(model) columns list the number of non-hydrogen atoms and hydrogen atoms in the chain respectively. The H(added) column lists the number of hydrogen atoms added and optimized by MolProbity. The Clashes column lists the number of clashes within the asymmetric unit, whereas Symm-Clashes lists symmetry-related clashes.

Mol	Chain	Non-H	H(model)	H(added)	Clashes	Symm-Clashes
1	A	2269	0	2226	67	0
1	B	2261	0	2222	74	0
1	C	2269	0	2226	76	0
1	D	2252	0	2216	67	0
2	A	4	0	0	0	0
2	B	4	0	0	0	0
2	C	4	0	0	0	0
2	D	4	0	0	0	0
3	A	26	0	19	2	0
3	B	26	0	19	3	0
3	C	26	0	19	1	0
3	D	26	0	19	1	0
4	A	20	0	42	2	0
4	B	20	0	42	5	0
4	C	20	0	42	4	0
4	D	20	0	42	5	0
5	A	185	0	0	5	0
5	B	140	0	0	3	0
5	C	180	0	0	4	0
5	D	150	0	0	0	0
All	All	9906	0	9134	279	0

The all-atom clashscore is defined as the number of clashes found per 1000 atoms (including hydrogen atoms). The all-atom clashscore for this structure is 15.

All (279) close contacts within the same asymmetric unit are listed below, sorted by their clash magnitude.

Atom-1	Atom-2	Interatomic distance (Å)	Clash overlap (Å)
1:B:24:ARG:HH11	1:B:24:ARG:HB2	1.22	1.04
1:C:69:LEU:HD11	1:C:93:LEU:HD11	1.39	1.00
1:B:182:LEU:HD22	1:B:275:ILE:HG23	1.54	0.87
1:D:205:LEU:HB2	4:D:4901:16A:H91	1.60	0.83
1:D:63:GLN:HB2	1:D:66:MSE:HE3	1.63	0.81
1:A:259:TYR:CE1	1:A:263:MSE:HE2	2.15	0.80
1:C:69:LEU:CD1	1:C:93:LEU:HD11	2.13	0.79

*Continued on next page...*

*Continued from previous page...*

Atom-1	Atom-2	Interatomic distance (Å)	Clash overlap (Å)
1:C:145:GLU:CD	1:C:145:GLU:H	1.91	0.78
1:D:89:ASN:HD22	1:D:115:SER:H	1.31	0.78
1:C:79:MSE:HB3	1:C:80:MSE:HE2	1.66	0.77
1:B:40:ARG:HB3	1:B:43:MSE:HG3	1.69	0.75
1:D:205:LEU:HD12	1:D:206:PRO:HD2	1.71	0.73
1:C:89:ASN:HD22	1:C:115:SER:H	1.36	0.73
1:D:112:ASN:HD22	1:D:114:ARG:H	1.37	0.73
1:A:171:GLY:HA3	1:A:205:LEU:HD21	1.71	0.73
1:D:89:ASN:ND2	1:D:115:SER:H	1.86	0.72
1:A:24:ARG:HH21	1:C:249:GLN:HG3	1.54	0.72
1:C:63:GLN:HB2	1:C:66:MSE:HE3	1.71	0.72
1:C:171:GLY:HA3	1:C:205:LEU:HD21	1.71	0.72
1:A:259:TYR:CZ	1:A:263:MSE:HE2	2.24	0.71
1:B:145:GLU:CD	1:B:145:GLU:H	2.00	0.70
1:A:145:GLU:H	1:A:145:GLU:CD	1.99	0.70
1:B:24:ARG:HH11	1:B:24:ARG:CB	2.03	0.70
1:C:40:ARG:HD2	1:C:42:ASP:OD1	1.92	0.70
1:C:159:PRO:O	1:C:287:LYS:HD3	1.91	0.70
1:D:79:MSE:HB3	1:D:80:MSE:HE2	1.74	0.70
1:C:93:LEU:N	1:C:93:LEU:HD12	2.07	0.70
1:C:147:TYR:HE1	1:C:210:MSE:HE3	1.56	0.69
1:D:173:HIS:HB2	1:D:176:GLU:CG	2.22	0.69
1:A:24:ARG:HD3	5:A:1496:HOH:O	1.91	0.69
1:A:244:GLN:HA	1:A:263:MSE:HE1	1.76	0.68
1:B:32:THR:HB	1:B:49:GLN:CG	2.24	0.68
1:D:12:VAL:HG21	1:D:95:LEU:HD12	1.75	0.68
1:B:271:GLU:O	1:B:275:ILE:HG12	1.95	0.67
1:D:173:HIS:HB2	1:D:176:GLU:HG3	1.76	0.67
1:B:112:ASN:ND2	1:B:114:ARG:H	1.93	0.67
1:D:257:GLU:HG2	1:D:261:ARG:HH12	1.60	0.67
1:A:112:ASN:ND2	1:A:114:ARG:H	1.94	0.66
1:A:112:ASN:HD22	1:A:114:ARG:H	1.43	0.66
1:A:123:TRP:HE3	1:A:153:LEU:HD13	1.59	0.66
1:D:145:GLU:CD	1:D:145:GLU:H	2.04	0.66
1:D:229:GLN:HB3	1:D:230:PRO:HD3	1.78	0.65
1:A:229:GLN:HB3	1:A:230:PRO:HD3	1.77	0.65
1:C:207:SER:H	1:C:210:MSE:HE2	1.61	0.65
1:B:186:PHE:HD1	1:B:187:THR:H	1.42	0.65
1:A:244:GLN:CA	1:A:263:MSE:HE1	2.25	0.64
1:D:210:MSE:HE2	1:D:214:CYS:SG	2.38	0.64
1:B:271:GLU:CD	1:B:274:ARG:HE	2.06	0.64

*Continued on next page...*

*Continued from previous page...*

Atom-1	Atom-2	Interatomic distance (Å)	Clash overlap (Å)
1:D:251:ILE:HG12	1:D:256:GLU:HA	1.80	0.64
1:B:32:THR:HB	1:B:49:GLN:HG2	1.80	0.64
1:A:244:GLN:N	1:A:263:MSE:HE1	2.12	0.64
1:D:112:ASN:ND2	1:D:114:ARG:H	1.95	0.64
1:A:159:PRO:O	1:A:287:LYS:HD3	1.98	0.64
1:C:140:GLU:CB	4:C:3901:16A:H131	2.27	0.64
1:D:210:MSE:HE3	1:D:210:MSE:HA	1.79	0.64
1:D:144:HIS:NE2	1:D:204:ARG:HD2	2.14	0.63
1:D:169:ILE:HG22	1:D:205:LEU:HD11	1.81	0.63
1:A:244:GLN:HA	1:A:263:MSE:CE	2.28	0.62
1:A:83:VAL:HG11	1:A:116:LYS:HE3	1.81	0.62
1:C:229:GLN:HB3	1:C:230:PRO:HD3	1.82	0.62
1:A:24:ARG:NH2	1:C:249:GLN:HG3	2.15	0.62
1:B:158:LEU:HG	1:B:162:GLY:HA3	1.82	0.61
1:B:37:TYR:CE2	1:B:39:GLU:HB3	2.36	0.61
1:D:43:MSE:HE2	1:D:47:GLU:HB3	1.82	0.60
1:C:35:CYS:O	1:C:52:LYS:HG3	2.01	0.60
1:D:251:ILE:HD13	1:D:256:GLU:HG2	1.83	0.60
1:B:229:GLN:HB3	1:B:230:PRO:HD3	1.84	0.60
1:D:126:PHE:CZ	1:D:128:GLU:HB2	2.37	0.60
1:C:140:GLU:HB3	4:C:3901:16A:H131	1.83	0.59
1:D:263:MSE:O	1:D:267:THR:HG22	2.02	0.59
1:D:89:ASN:HD22	1:D:115:SER:N	2.01	0.59
1:A:229:GLN:HB2	1:A:279:ASP:OD1	2.02	0.58
1:D:44:THR:OG1	1:D:47:GLU:HG3	2.02	0.58
1:B:144:HIS:HD2	1:B:204:ARG:HD2	1.69	0.58
1:D:203:GLY:HA3	4:D:4901:16A:H112	1.86	0.58
1:B:186:PHE:HD1	1:B:187:THR:N	2.02	0.58
1:C:249:GLN:O	1:C:253:LEU:HD13	2.04	0.58
1:C:72:GLY:HA2	3:C:3900:SAH:H1'	1.85	0.57
1:A:110:SER:OG	1:A:116:LYS:HE2	2.04	0.57
1:B:83:VAL:CG1	1:B:114:ARG:HB2	2.34	0.57
1:D:169:ILE:HD13	4:D:4901:16A:H32	1.87	0.57
1:D:272:MSE:HB3	1:D:278:ILE:CD1	2.35	0.57
1:B:83:VAL:CG1	1:B:112:ASN:ND2	2.67	0.57
1:D:159:PRO:O	1:D:287:LYS:HD3	2.04	0.56
1:A:89:ASN:HD22	1:A:115:SER:H	1.51	0.56
1:C:89:ASN:ND2	1:C:115:SER:H	2.02	0.56
1:D:110:SER:OG	1:D:116:LYS:HE2	2.06	0.56
1:C:79:MSE:HE2	1:C:80:MSE:CE	2.36	0.56
1:A:44:THR:OG1	1:A:47:GLU:HG3	2.06	0.55

*Continued on next page...*

*Continued from previous page...*

Atom-1	Atom-2	Interatomic distance (Å)	Clash overlap (Å)
1:C:40:ARG:O	1:C:43:MSE:HG3	2.06	0.55
1:C:208:ILE:HB	1:C:209:PRO:HD3	1.87	0.55
1:D:272:MSE:HB3	1:D:278:ILE:HD11	1.88	0.55
1:B:165:LEU:HD13	1:B:165:LEU:C	2.31	0.55
1:B:183:PRO:HA	5:B:1647:HOH:O	2.05	0.55
1:B:257:GLU:OE2	1:B:261:ARG:NH2	2.40	0.55
1:D:35:CYS:O	1:D:52:LYS:HG3	2.07	0.54
1:C:169:ILE:HD13	4:C:3901:16A:H32	1.88	0.54
1:D:237:ASP:CG	1:D:274:ARG:HH22	2.16	0.54
1:B:173:HIS:O	1:B:177:ILE:HG13	2.08	0.54
1:D:188:PHE:O	1:D:191:PHE:HB3	2.07	0.54
1:C:272:MSE:HA	1:C:275:ILE:HG22	1.89	0.54
1:A:24:ARG:HH22	1:C:246:ASN:ND2	2.05	0.53
1:C:215:ALA:O	1:C:220:PHE:HB2	2.09	0.53
1:D:204:ARG:HG3	1:D:204:ARG:HH11	1.72	0.53
1:B:83:VAL:HG12	1:B:112:ASN:ND2	2.23	0.53
1:B:12:VAL:HG21	1:B:95:LEU:HD12	1.91	0.53
1:A:35:CYS:O	1:A:52:LYS:HG3	2.08	0.53
1:B:72:GLY:HA2	3:B:2900:SAH:H1'	1.90	0.53
1:C:158:LEU:HG	1:C:162:GLY:HA3	1.89	0.53
1:A:140:GLU:CB	4:A:1901:16A:H131	2.39	0.52
1:C:12:VAL:HG21	1:C:95:LEU:HD12	1.91	0.52
1:C:112:ASN:ND2	1:C:114:ARG:H	2.07	0.52
1:B:159:PRO:O	1:B:287:LYS:HD3	2.10	0.52
1:D:270:ALA:O	1:D:274:ARG:HG3	2.09	0.52
1:C:198:GLU:HB3	1:C:261:ARG:HD2	1.90	0.52
1:A:165:LEU:C	1:A:165:LEU:HD13	2.35	0.52
1:B:44:THR:OG1	1:B:47:GLU:HG3	2.10	0.52
1:A:208:ILE:HB	1:A:209:PRO:HD3	1.92	0.52
1:B:35:CYS:HB2	1:B:232:TYR:CD2	2.45	0.52
1:C:102:HIS:O	1:C:105:GLN:NE2	2.40	0.52
1:A:210:MSE:HE2	1:A:214:CYS:SG	2.49	0.51
1:B:208:ILE:HB	1:B:209:PRO:HD3	1.92	0.51
1:B:182:LEU:HD22	1:B:275:ILE:HD12	1.92	0.51
1:C:79:MSE:HE2	1:C:80:MSE:HE1	1.92	0.51
1:D:72:GLY:HA2	3:D:4900:SAH:H1'	1.92	0.51
1:B:112:ASN:HD22	1:B:114:ARG:H	1.57	0.51
1:A:272:MSE:SE	1:A:275:ILE:HD11	2.61	0.51
1:B:176:GLU:O	1:B:180:ARG:HB2	2.11	0.51
1:B:144:HIS:ND1	1:B:210:MSE:HE3	2.26	0.50
1:C:165:LEU:HD13	1:C:165:LEU:C	2.36	0.50

*Continued on next page...*

*Continued from previous page...*

Atom-1	Atom-2	Interatomic distance (Å)	Clash overlap (Å)
1:C:204:ARG:HD3	5:C:1530:HOH:O	2.11	0.50
1:B:89:ASN:ND2	1:B:115:SER:H	2.09	0.50
1:B:169:ILE:HD13	4:B:2901:16A:H32	1.94	0.50
1:A:79:MSE:HG3	5:A:1001:HOH:O	2.11	0.50
1:A:131:ASP:HA	1:A:159:PRO:CG	2.41	0.50
1:A:251:ILE:HG12	1:A:256:GLU:HA	1.94	0.50
1:A:259:TYR:OH	1:A:263:MSE:CE	2.59	0.50
1:B:10:ALA:HB3	5:B:1205:HOH:O	2.12	0.50
1:D:261:ARG:NH1	1:D:261:ARG:HB2	2.27	0.50
1:B:83:VAL:HG13	1:B:114:ARG:HB2	1.94	0.50
1:C:37:TYR:CE2	1:C:39:GLU:HB3	2.47	0.50
1:B:144:HIS:CD2	1:B:204:ARG:HD2	2.47	0.49
1:B:167:HIS:C	1:B:167:HIS:CD2	2.90	0.49
1:B:35:CYS:HB2	1:B:232:TYR:CE2	2.47	0.49
1:A:126:PHE:CZ	1:A:128:GLU:HB2	2.46	0.49
1:C:110:SER:OG	1:C:116:LYS:HE2	2.12	0.49
1:C:126:PHE:CZ	1:C:128:GLU:HB2	2.48	0.49
1:A:182:LEU:HD12	5:A:1573:HOH:O	2.13	0.49
1:C:177:ILE:HG23	1:C:182:LEU:HB2	1.94	0.49
1:A:271:GLU:O	1:A:275:ILE:HG12	2.12	0.49
1:A:130:VAL:O	1:A:159:PRO:HD3	2.13	0.49
1:C:89:ASN:HD22	1:C:115:SER:N	2.08	0.49
1:B:32:THR:CB	1:B:49:GLN:HG3	2.43	0.48
1:C:145:GLU:CD	1:C:145:GLU:N	2.67	0.48
1:B:182:LEU:CD2	1:B:275:ILE:HD12	2.43	0.48
1:A:249:GLN:HG3	1:C:24:ARG:CZ	2.44	0.48
1:D:83:VAL:HG11	1:D:116:LYS:HE3	1.95	0.48
1:B:35:CYS:O	1:B:52:LYS:HG3	2.13	0.48
1:B:126:PHE:CZ	1:B:128:GLU:HB2	2.48	0.48
1:B:272:MSE:HA	1:B:272:MSE:HE2	1.95	0.48
1:D:172:LEU:HD13	1:D:180:ARG:NH2	2.29	0.48
1:A:155:HIS:HB2	1:A:220:PHE:CE1	2.49	0.48
1:C:144:HIS:NE2	1:C:210:MSE:HE1	2.29	0.48
1:D:7:PRO:HB2	1:D:9:PHE:CE1	2.48	0.47
1:A:52:LYS:C	1:A:52:LYS:HD2	2.40	0.47
1:A:244:GLN:CA	1:A:263:MSE:CE	2.91	0.47
1:C:49:GLN:HA	1:C:49:GLN:OE1	2.15	0.47
1:D:35:CYS:HB2	1:D:232:TYR:CD2	2.49	0.47
1:C:167:HIS:C	1:C:167:HIS:CD2	2.92	0.47
1:D:272:MSE:SE	1:D:275:ILE:HD11	2.65	0.47
1:A:24:ARG:HH21	1:C:249:GLN:CG	2.26	0.47

*Continued on next page...*

*Continued from previous page...*

Atom-1	Atom-2	Interatomic distance (Å)	Clash overlap (Å)
1:B:180:ARG:NH1	1:B:180:ARG:HG3	2.30	0.47
1:A:131:ASP:HA	1:A:159:PRO:HG2	1.97	0.47
1:B:205:LEU:HD13	4:B:2901:16A:H82	1.96	0.47
1:D:172:LEU:HD13	1:D:180:ARG:HH22	1.79	0.47
1:D:208:ILE:HB	1:D:209:PRO:HD3	1.96	0.47
1:A:180:ARG:HB2	1:A:182:LEU:HD23	1.96	0.47
1:D:269:CYS:SG	4:D:4901:16A:H22	2.54	0.47
1:A:123:TRP:CE3	1:A:153:LEU:HD13	2.45	0.47
1:A:249:GLN:HG3	1:C:24:ARG:NH2	2.29	0.47
1:C:133:ILE:HG13	1:C:158:LEU:CD1	2.45	0.47
1:B:182:LEU:N	1:B:182:LEU:HD12	2.30	0.46
1:B:215:ALA:O	1:B:220:PHE:HB2	2.15	0.46
1:B:229:GLN:HB2	1:B:279:ASP:OD1	2.15	0.46
1:C:257:GLU:OE2	1:C:261:ARG:NH1	2.48	0.46
1:D:165:LEU:C	1:D:165:LEU:HD13	2.40	0.46
1:A:204:ARG:O	1:A:206:PRO:HD3	2.14	0.46
1:C:173:HIS:HB2	1:C:176:GLU:HG3	1.96	0.46
1:D:53:ILE:O	1:D:57:LEU:HG	2.15	0.46
1:A:133:ILE:HG13	1:A:158:LEU:HD13	1.96	0.46
1:C:140:GLU:HB2	4:C:3901:16A:H131	1.98	0.46
1:B:262:TYR:O	1:B:266:LEU:HG	2.16	0.46
1:C:176:GLU:HB3	5:C:1424:HOH:O	2.15	0.46
1:D:167:HIS:C	1:D:167:HIS:CD2	2.94	0.46
1:A:153:LEU:HD23	1:A:153:LEU:C	2.40	0.46
1:B:180:ARG:HG3	1:B:180:ARG:HH11	1.80	0.46
1:C:44:THR:OG1	1:C:47:GLU:HG3	2.16	0.46
1:C:52:LYS:C	1:C:52:LYS:HD2	2.41	0.46
1:B:224:ARG:HG2	1:B:225:VAL:N	2.30	0.46
1:A:158:LEU:HG	1:A:162:GLY:HA3	1.97	0.45
1:A:167:HIS:C	1:A:167:HIS:CD2	2.94	0.45
1:C:93:LEU:N	1:C:93:LEU:CD1	2.79	0.45
1:D:16:TYR:OH	4:D:4901:16A:H193	2.15	0.45
1:D:255:SER:OG	1:D:258:VAL:HG23	2.16	0.45
1:A:62:LEU:HD22	1:A:88:VAL:HG11	1.98	0.45
1:A:72:GLY:HA2	3:A:1900:SAH:H1'	1.97	0.45
1:C:83:VAL:HG11	1:C:116:LYS:HE3	1.98	0.45
1:B:32:THR:HB	1:B:49:GLN:HG3	1.97	0.45
1:C:206:PRO:HA	1:C:210:MSE:CE	2.47	0.45
1:C:193:LYS:C	1:C:193:LYS:CD	2.91	0.44
1:A:81:ARG:CZ	1:A:85:LYS:HG3	2.47	0.44
1:D:69:LEU:HB2	1:D:130:VAL:HG11	1.98	0.44

*Continued on next page...*



*Continued from previous page...*

Atom-1	Atom-2	Interatomic distance (Å)	Clash overlap (Å)
1:C:35:CYS:HB2	1:C:232:TYR:CD2	2.52	0.44
1:C:172:LEU:HB3	5:C:1561:HOH:O	2.17	0.44
1:B:186:PHE:CD1	1:B:187:THR:N	2.81	0.44
1:D:80:MSE:O	1:D:84:GLU:HB2	2.18	0.44
1:B:40:ARG:HB3	1:B:43:MSE:CG	2.44	0.44
1:D:35:CYS:HB2	1:D:232:TYR:CE2	2.52	0.44
1:B:140:GLU:HB3	4:B:2901:16A:H131	2.00	0.43
1:C:136:ILE:HG23	1:C:167:HIS:CG	2.52	0.43
1:B:80:MSE:HE2	1:B:80:MSE:N	2.33	0.43
1:D:99:GLN:O	1:D:103:VAL:HG23	2.19	0.43
1:D:155:HIS:CE1	1:D:287:LYS:HE3	2.53	0.43
1:A:259:TYR:OH	1:A:263:MSE:HE2	2.18	0.43
1:C:155:HIS:CE1	1:C:287:LYS:HE3	2.53	0.43
1:B:89:ASN:HD22	1:B:115:SER:H	1.66	0.43
1:B:144:HIS:CE1	1:B:210:MSE:HE3	2.53	0.43
1:C:112:ASN:HD22	1:C:114:ARG:H	1.66	0.43
1:B:49:GLN:OE1	1:B:49:GLN:HA	2.18	0.43
1:A:210:MSE:HE3	1:A:210:MSE:HA	2.00	0.43
1:B:140:GLU:CB	4:B:2901:16A:H131	2.49	0.43
1:B:122:GLY:HA2	3:B:2900:SAH:N1	2.34	0.43
1:B:175:LYS:HG3	1:B:179:GLU:OE1	2.19	0.43
1:C:193:LYS:C	1:C:193:LYS:HD3	2.44	0.43
1:A:97:LYS:HD3	5:A:1643:HOH:O	2.18	0.43
1:A:272:MSE:HB3	1:A:278:ILE:CD1	2.49	0.42
1:B:191:PHE:CZ	1:B:268:GLY:HA3	2.53	0.42
1:C:80:MSE:O	1:C:84:GLU:HB2	2.19	0.42
1:D:158:LEU:HG	1:D:162:GLY:HA3	2.01	0.42
1:D:130:VAL:O	1:D:159:PRO:HD3	2.19	0.42
1:D:229:GLN:HB2	1:D:279:ASP:OD1	2.19	0.42
1:B:83:VAL:HG11	1:B:112:ASN:ND2	2.33	0.42
1:C:49:GLN:O	1:C:53:ILE:HG13	2.19	0.42
1:A:24:ARG:NH2	5:A:1016:HOH:O	2.53	0.42
1:C:40:ARG:HB3	1:C:43:MSE:HG3	2.00	0.42
1:C:153:LEU:HD11	5:C:1248:HOH:O	2.19	0.42
1:C:177:ILE:CG2	1:C:182:LEU:HB2	2.49	0.42
1:D:173:HIS:HB2	1:D:176:GLU:HG2	2.00	0.42
1:C:18:LEU:O	1:C:19:SER:HB2	2.19	0.42
1:D:142:PHE:N	1:D:142:PHE:CD1	2.87	0.42
1:D:49:GLN:OE1	1:D:49:GLN:HA	2.19	0.42
1:D:144:HIS:CD2	1:D:204:ARG:HD2	2.54	0.42
1:B:52:LYS:HD2	1:B:52:LYS:C	2.44	0.42

*Continued on next page...*

*Continued from previous page...*

Atom-1	Atom-2	Interatomic distance (Å)	Clash overlap (Å)
1:C:175:LYS:O	1:C:179:GLU:HG3	2.20	0.42
1:A:249:GLN:OE1	1:A:249:GLN:HA	2.20	0.41
1:B:77:ALA:HB3	5:B:1232:HOH:O	2.20	0.41
1:B:89:ASN:ND2	1:B:114:ARG:HD2	2.35	0.41
3:B:2900:SAH:SD	4:B:2901:16A:H173	2.60	0.41
1:B:131:ASP:HA	1:B:159:PRO:CG	2.50	0.41
1:A:243:LEU:C	1:A:263:MSE:HE1	2.45	0.41
1:D:75:TRP:CE2	1:D:99:GLN:HG2	2.54	0.41
1:A:63:GLN:HB2	1:A:66:MSE:HE3	2.02	0.41
1:A:143:GLY:HA3	1:A:145:GLU:OE2	2.19	0.41
1:A:140:GLU:HB3	4:A:1901:16A:H131	2.02	0.41
1:B:205:LEU:HA	1:B:206:PRO:HD3	1.89	0.41
1:C:191:PHE:CE1	1:C:268:GLY:HA3	2.56	0.41
1:C:224:ARG:HG2	1:C:225:VAL:N	2.36	0.41
1:A:133:ILE:HG13	1:A:158:LEU:CD1	2.51	0.41
1:A:122:GLY:HA2	3:A:1900:SAH:N1	2.36	0.41
1:B:88:VAL:HG22	1:B:89:ASN:N	2.36	0.41
1:C:159:PRO:HD2	1:C:162:GLY:HA3	2.02	0.41
1:D:79:MSE:HE2	1:D:80:MSE:CE	2.50	0.41
1:D:193:LYS:C	1:D:193:LYS:HD3	2.46	0.41
1:A:136:ILE:HG23	1:A:167:HIS:CG	2.56	0.41
1:D:133:ILE:HG13	1:D:158:LEU:CD1	2.52	0.40
1:B:193:LYS:C	1:B:193:LYS:HD3	2.46	0.40
1:A:155:HIS:NE2	1:A:287:LYS:HG3	2.36	0.40
1:B:83:VAL:HG12	1:B:112:ASN:CG	2.47	0.40
1:C:81:ARG:CZ	1:C:85:LYS:HG3	2.52	0.40

There are no symmetry-related clashes.

## 5.3 Torsion angles

### 5.3.1 Protein backbone

In the following table, the Percentiles column shows the percent Ramachandran outliers of the chain as a percentile score with respect to all X-ray entries followed by that with respect to entries of similar resolution.

The Analysed column shows the number of residues for which the backbone conformation was analysed, and the total number of residues.

Mol	Chain	Analysed	Favoured	Allowed	Outliers	Percentiles	
1	A	283/287 (99%)	272 (96%)	10 (4%)	1 (0%)	30	27
1	B	282/287 (98%)	269 (95%)	12 (4%)	1 (0%)	30	27
1	C	283/287 (99%)	273 (96%)	9 (3%)	1 (0%)	30	27
1	D	281/287 (98%)	276 (98%)	4 (1%)	1 (0%)	30	27
All	All	1129/1148 (98%)	1090 (96%)	35 (3%)	4 (0%)	30	27

All (4) Ramachandran outliers are listed below:

Mol	Chain	Res	Type
1	C	19	SER
1	A	19	SER
1	B	19	SER
1	D	19	SER

### 5.3.2 Protein sidechains ⓘ

In the following table, the Percentiles column shows the percent sidechain outliers of the chain as a percentile score with respect to all X-ray entries followed by that with respect to entries of similar resolution.

The Analysed column shows the number of residues for which the sidechain conformation was analysed, and the total number of residues.

Mol	Chain	Analysed	Rotameric	Outliers	Percentiles	
1	A	241/233 (103%)	234 (97%)	7 (3%)	37	40
1	B	240/233 (103%)	231 (96%)	9 (4%)	29	29
1	C	241/233 (103%)	234 (97%)	7 (3%)	37	40
1	D	239/233 (103%)	232 (97%)	7 (3%)	37	40
All	All	961/932 (103%)	931 (97%)	30 (3%)	35	37

All (30) residues with a non-rotameric sidechain are listed below:

Mol	Chain	Res	Type
1	A	84	GLU
1	A	93	LEU
1	A	111	GLU
1	A	158	LEU
1	A	232	TYR
1	A	253	LEU
1	A	265	TYR

*Continued on next page...*

*Continued from previous page...*

Mol	Chain	Res	Type
1	B	24	ARG
1	B	41	ASP
1	B	49	GLN
1	B	93	LEU
1	B	145	GLU
1	B	167	HIS
1	B	186	PHE
1	B	232	TYR
1	B	265	TYR
1	C	84	GLU
1	C	93	LEU
1	C	105	GLN
1	C	153	LEU
1	C	158	LEU
1	C	232	TYR
1	C	265	TYR
1	D	84	GLU
1	D	85	LYS
1	D	145	GLU
1	D	158	LEU
1	D	167	HIS
1	D	204	ARG
1	D	265	TYR

Sometimes sidechains can be flipped to improve hydrogen bonding and reduce clashes. All (46) such sidechains are listed below:

Mol	Chain	Res	Type
1	A	13	GLN
1	A	31	GLN
1	A	63	GLN
1	A	89	ASN
1	A	101	ASN
1	A	104	GLN
1	A	105	GLN
1	A	112	ASN
1	A	144	HIS
1	A	173	HIS
1	A	178	HIS
1	A	244	GLN
1	A	246	ASN
1	B	13	GLN
1	B	31	GLN

*Continued on next page...*

*Continued from previous page...*

Mol	Chain	Res	Type
1	B	89	ASN
1	B	101	ASN
1	B	112	ASN
1	B	144	HIS
1	B	212	GLN
1	B	246	ASN
1	B	249	GLN
1	C	8	HIS
1	C	13	GLN
1	C	89	ASN
1	C	101	ASN
1	C	109	ASN
1	C	112	ASN
1	C	173	HIS
1	C	178	HIS
1	C	244	GLN
1	C	246	ASN
1	C	249	GLN
1	C	286	GLN
1	D	11	ASN
1	D	13	GLN
1	D	46	GLN
1	D	63	GLN
1	D	89	ASN
1	D	101	ASN
1	D	105	GLN
1	D	112	ASN
1	D	178	HIS
1	D	229	GLN
1	D	244	GLN
1	D	246	ASN

### 5.3.3 RNA ⓘ

There are no RNA molecules in this entry.

## 5.4 Non-standard residues in protein, DNA, RNA chains ⓘ

There are no non-standard protein/DNA/RNA residues in this entry.

## 5.5 Carbohydrates [i](#)

There are no oligosaccharides in this entry.

## 5.6 Ligand geometry [i](#)

12 ligands are modelled in this entry.

In the following table, the Counts columns list the number of bonds (or angles) for which Mogul statistics could be retrieved, the number of bonds (or angles) that are observed in the model and the number of bonds (or angles) that are defined in the Chemical Component Dictionary. The Link column lists molecule types, if any, to which the group is linked. The Z score for a bond length (or angle) is the number of standard deviations the observed value is removed from the expected value. A bond length (or angle) with  $|Z| > 2$  is considered an outlier worth inspection. RMSZ is the root-mean-square of all Z scores of the bond lengths (or angles).

Mol	Type	Chain	Res	Link	Bond lengths			Bond angles		
					Counts	RMSZ	# Z  > 2	Counts	RMSZ	# Z  > 2
4	16A	A	1901	-	19,19,19	0.71	0	21,21,21	1.06	1 (4%)
3	SAH	B	2900	-	27,28,28	1.72	2 (7%)	36,40,40	0.84	2 (5%)
3	SAH	A	1900	-	27,28,28	1.65	2 (7%)	36,40,40	0.92	2 (5%)
2	CO3	C	3902	-	3,3,3	4.00	1 (33%)	2,3,3	0.11	0
2	CO3	B	2902	-	3,3,3	4.17	1 (33%)	2,3,3	0.12	0
2	CO3	A	1902	-	3,3,3	4.05	1 (33%)	2,3,3	0.10	0
3	SAH	C	3900	-	27,28,28	1.67	2 (7%)	36,40,40	0.79	2 (5%)
2	CO3	D	4902	-	3,3,3	4.24	1 (33%)	2,3,3	0.18	0
4	16A	C	3901	-	19,19,19	0.68	0	21,21,21	0.97	1 (4%)
4	16A	B	2901	-	19,19,19	0.69	0	21,21,21	0.96	0
4	16A	D	4901	-	19,19,19	0.68	0	21,21,21	1.31	2 (9%)
3	SAH	D	4900	-	27,28,28	1.66	3 (11%)	36,40,40	0.82	1 (2%)

In the following table, the Chirals column lists the number of chiral outliers, the number of chiral centers analysed, the number of these observed in the model and the number defined in the Chemical Component Dictionary. Similar counts are reported in the Torsion and Rings columns. '-' means no outliers of that kind were identified.

Mol	Type	Chain	Res	Link	Chirals	Torsions	Rings
4	16A	A	1901	-	-	7/17/17/17	-
3	SAH	B	2900	-	-	0/15/31/31	0/3/3/3
3	SAH	A	1900	-	-	0/15/31/31	0/3/3/3
3	SAH	C	3900	-	-	3/15/31/31	0/3/3/3
4	16A	C	3901	-	-	4/17/17/17	-

*Continued on next page...*

*Continued from previous page...*

Mol	Type	Chain	Res	Link	Chirals	Torsions	Rings
4	16A	B	2901	-	-	4/17/17/17	-
4	16A	D	4901	-	-	3/17/17/17	-
3	SAH	D	4900	-	-	1/15/31/31	0/3/3/3

All (13) bond length outliers are listed below:

Mol	Chain	Res	Type	Atoms	Z	Observed(Å)	Ideal(Å)
3	B	2900	SAH	C8-N9	7.36	1.50	1.37
2	D	4902	CO3	O1-C	7.34	1.51	1.25
3	A	1900	SAH	C8-N9	7.25	1.49	1.37
2	B	2902	CO3	O1-C	7.20	1.50	1.25
3	C	3900	SAH	C8-N9	7.04	1.49	1.37
3	D	4900	SAH	C8-N9	7.04	1.49	1.37
2	A	1902	CO3	O1-C	7.01	1.49	1.25
2	C	3902	CO3	O1-C	6.90	1.49	1.25
3	B	2900	SAH	C4-N3	2.20	1.38	1.34
3	D	4900	SAH	C4-N3	2.08	1.38	1.34
3	C	3900	SAH	C4-N3	2.05	1.38	1.34
3	A	1900	SAH	C4-N3	2.05	1.38	1.34
3	D	4900	SAH	OXT-C	-2.00	1.24	1.30

All (11) bond angle outliers are listed below:

Mol	Chain	Res	Type	Atoms	Z	Observed(°)	Ideal(°)
4	D	4901	16A	C15-C16-N1	3.60	129.15	115.97
3	A	1900	SAH	C4-N9-C8	-2.52	103.10	105.74
4	A	1901	16A	C15-C16-N1	2.41	124.82	115.97
3	D	4900	SAH	C4-N9-C8	-2.35	103.27	105.74
3	A	1900	SAH	O4'-C4'-C5'	2.33	114.83	108.83
4	C	3901	16A	C15-C16-N1	2.22	124.11	115.97
3	B	2900	SAH	C4-N9-C8	-2.15	103.48	105.74
3	C	3900	SAH	C4-N9-C8	-2.11	103.52	105.74
3	C	3900	SAH	O4'-C4'-C5'	2.10	114.23	108.83
4	D	4901	16A	C14-C13-C12	-2.04	104.04	114.37
3	B	2900	SAH	O4'-C1'-N9	2.03	111.98	108.09

There are no chirality outliers.

All (22) torsion outliers are listed below:

Mol	Chain	Res	Type	Atoms
4	C	3901	16A	C4-C5-C6-C7

*Continued on next page...*

*Continued from previous page...*

Mol	Chain	Res	Type	Atoms
4	A	1901	16A	C6-C7-C8-C9
4	B	2901	16A	C10-C11-C12-C13
4	A	1901	16A	C10-C11-C12-C13
4	C	3901	16A	C9-C10-C11-C12
4	D	4901	16A	C7-C8-C9-C10
4	B	2901	16A	C7-C8-C9-C10
4	D	4901	16A	C5-C6-C7-C8
4	D	4901	16A	C10-C11-C12-C13
4	A	1901	16A	C5-C6-C7-C8
4	C	3901	16A	C6-C7-C8-C9
4	A	1901	16A	C7-C8-C9-C10
4	C	3901	16A	C5-C6-C7-C8
4	A	1901	16A	C9-C10-C11-C12
4	B	2901	16A	C6-C7-C8-C9
4	A	1901	16A	C11-C10-C9-C8
4	B	2901	16A	C9-C10-C11-C12
3	C	3900	SAH	O4'-C4'-C5'-SD
4	A	1901	16A	C4-C5-C6-C7
3	C	3900	SAH	CB-CG-SD-C5'
3	D	4900	SAH	CB-CG-SD-C5'
3	C	3900	SAH	C-CA-CB-CG

There are no ring outliers.

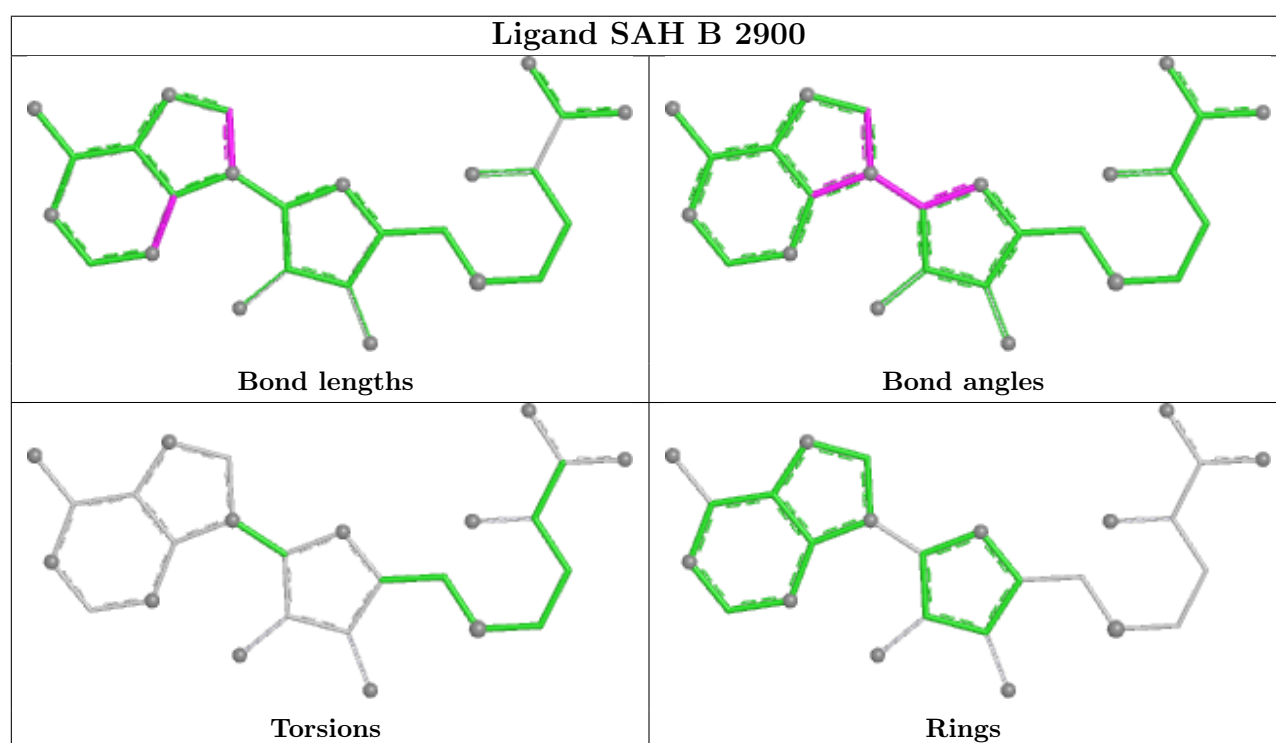
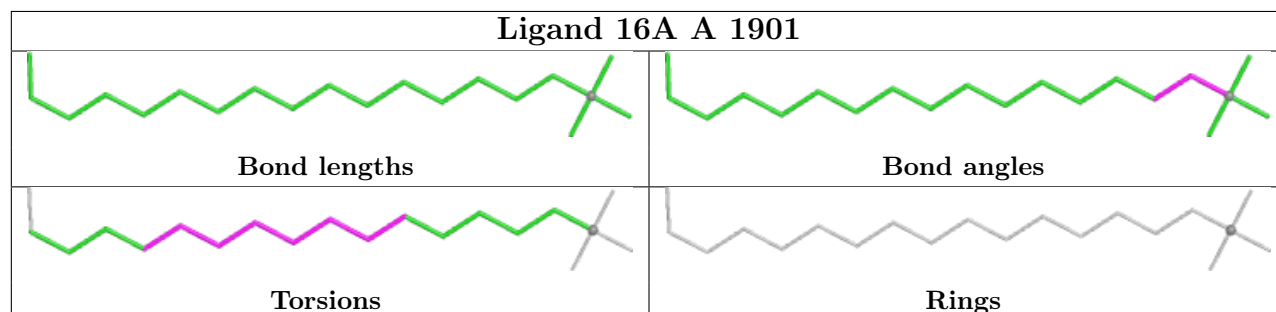
8 monomers are involved in 22 short contacts:

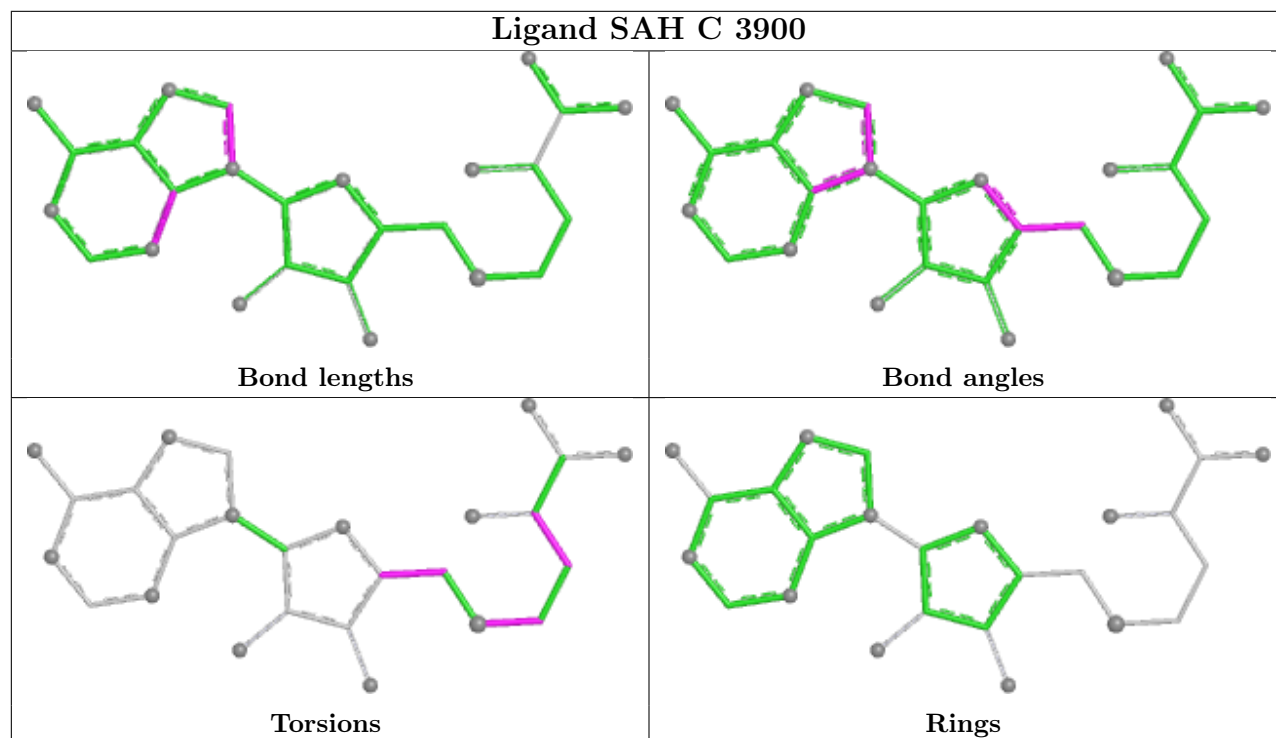
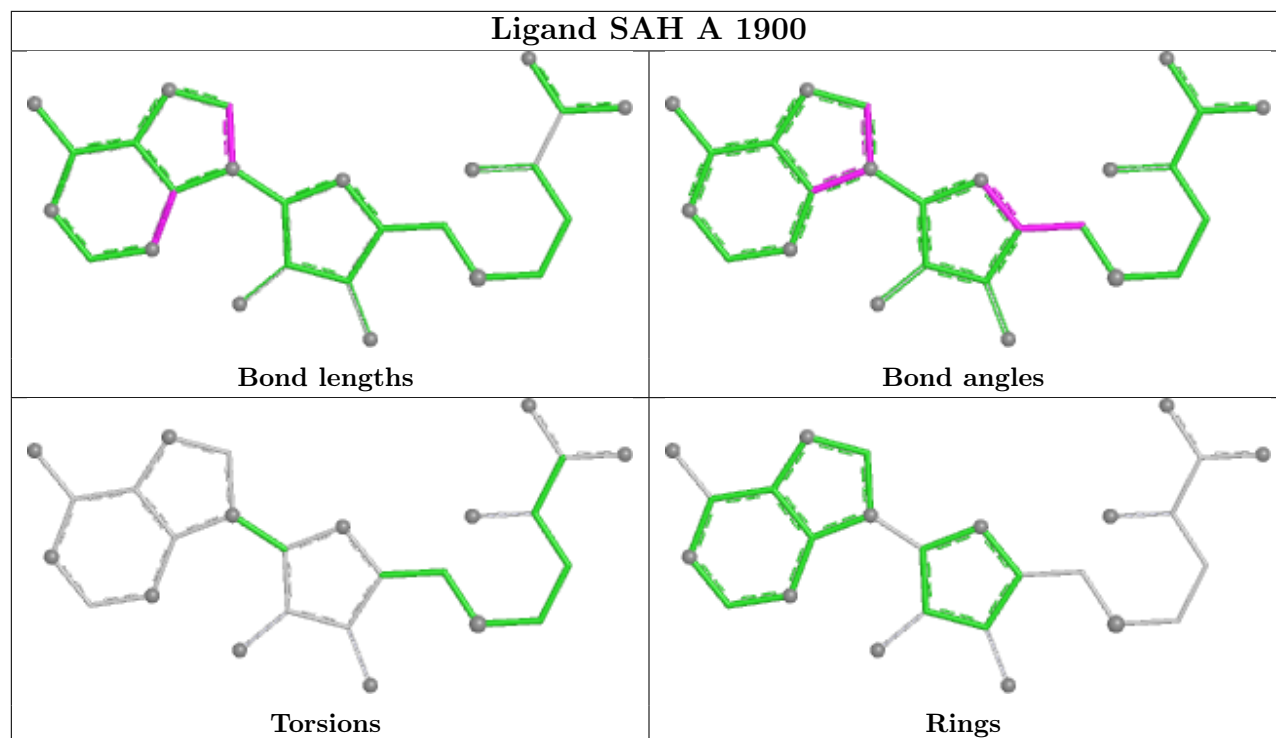
Mol	Chain	Res	Type	Clashes	Symm-Clashes
4	A	1901	16A	2	0
3	B	2900	SAH	3	0
3	A	1900	SAH	2	0
3	C	3900	SAH	1	0
4	C	3901	16A	4	0
4	B	2901	16A	5	0
4	D	4901	16A	5	0
3	D	4900	SAH	1	0

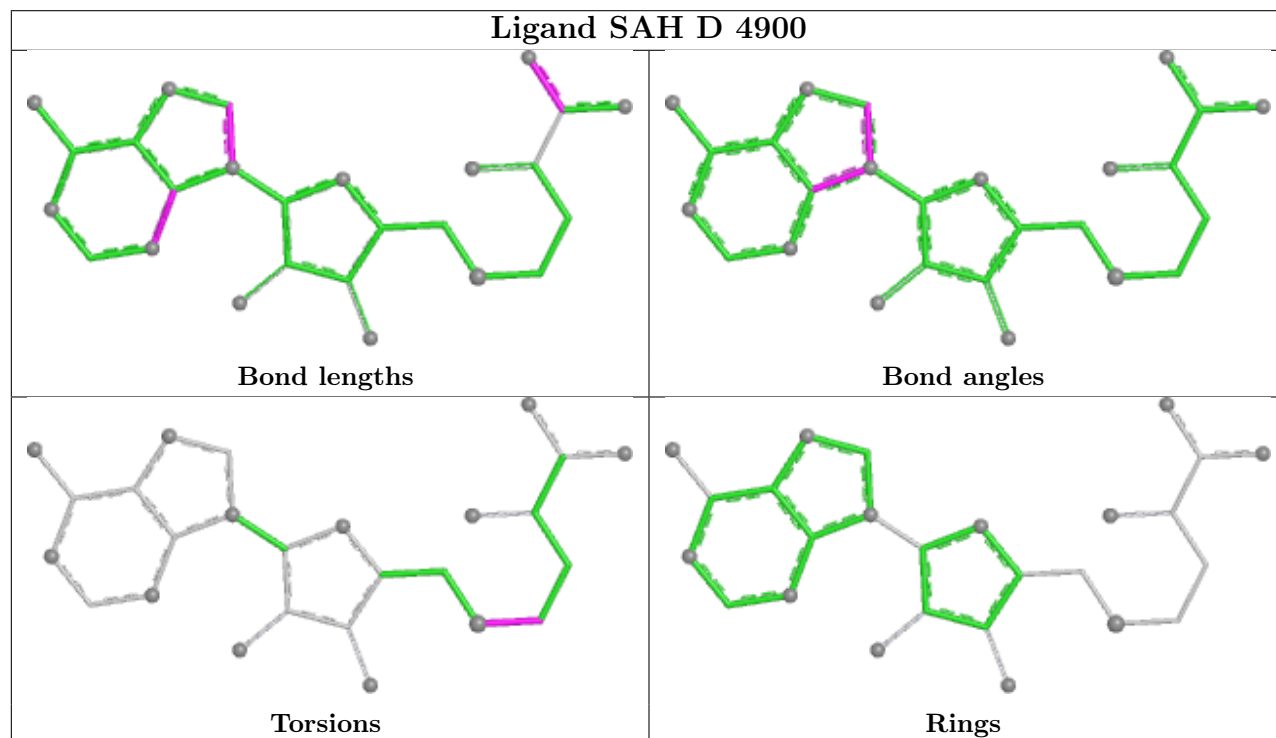
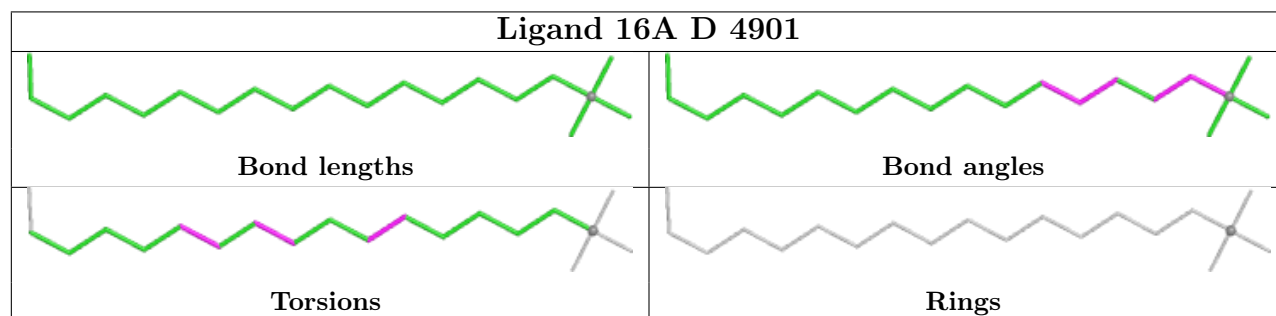
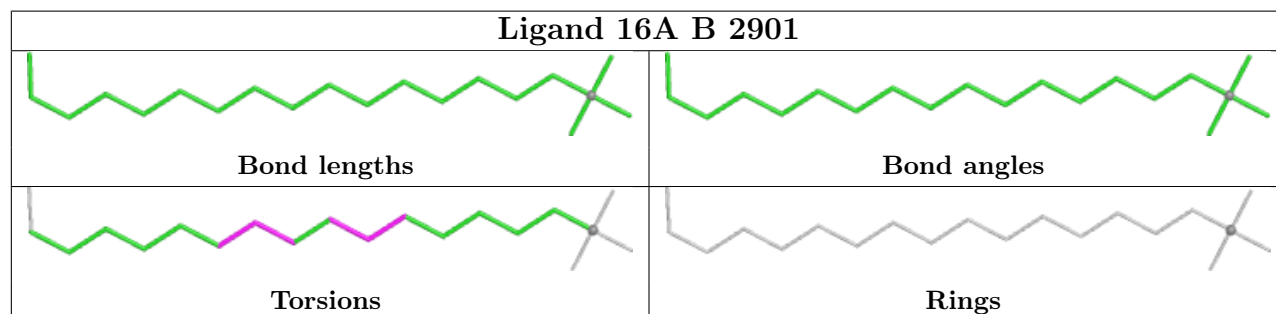
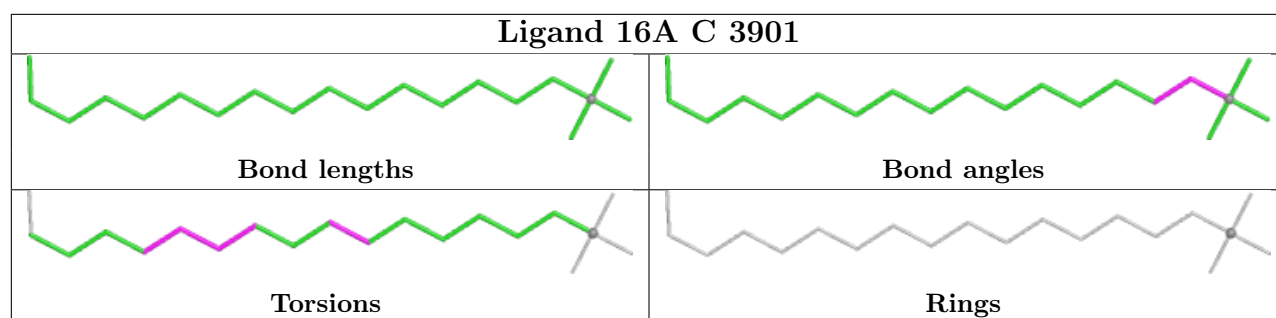
The following is a two-dimensional graphical depiction of Mogul quality analysis of bond lengths, bond angles, torsion angles, and ring geometry for all instances of the Ligand of Interest. In addition, ligands with molecular weight > 250 and outliers as shown on the validation Tables will also be included. For torsion angles, if less than 5% of the Mogul distribution of torsion angles is within 10 degrees of the torsion angle in question, then that torsion angle is considered an outlier. Any bond that is central to one or more torsion angles identified as an outlier by Mogul will be highlighted in the graph. For rings, the root-mean-square deviation (RMSD) between the ring



in question and similar rings identified by Mogul is calculated over all ring torsion angles. If the average RMSD is greater than 60 degrees and the minimal RMSD between the ring in question and any Mogul-identified rings is also greater than 60 degrees, then that ring is considered an outlier. The outliers are highlighted in purple. The color gray indicates Mogul did not find sufficient equivalents in the CSD to analyse the geometry.







## 5.7 Other polymers [i](#)

There are no such residues in this entry.

## 5.8 Polymer linkage issues [i](#)

There are no chain breaks in this entry.

## 6 Fit of model and data

### 6.1 Protein, DNA and RNA chains

EDS was not executed - this section is therefore empty.

### 6.2 Non-standard residues in protein, DNA, RNA chains

EDS was not executed - this section is therefore empty.

### 6.3 Carbohydrates

EDS was not executed - this section is therefore empty.

### 6.4 Ligands

EDS was not executed - this section is therefore empty.

### 6.5 Other polymers

EDS was not executed - this section is therefore empty.