



Full wwPDB X-ray Structure Validation Report ⓘ

Mar 12, 2026 – 09:38 PM UTC

PDB ID : 1LK6 / pdb_00001lk6
Title : Structure of dimeric antithrombin complexed with a P14-P9 reactive loop peptide and an exogenous tripeptide
Authors : Zhou, A.; Huntington, J.A.; Lomas, D.A.; Carrell, R.W.; Stein, P.E.
Deposited on : 2002-04-24
Resolution : 2.80 Å(reported)

This is a Full wwPDB X-ray Structure Validation Report for a publicly released PDB entry.

We welcome your comments at validation@mail.wwpdb.org

A user guide is available at

<https://www.wwpdb.org/validation/2017/XrayValidationReportHelp>

with specific help available everywhere you see the ⓘ symbol.

The types of validation reports are described at

<http://www.wwpdb.org/validation/2017/FAQs#types>.

The following versions of software and data (see [references ⓘ](#)) were used in the production of this report:

MolProbity	:	4-5-2 with Phenix2.0
Mogul	:	2022.3.0, CSD as543be (2022)
Xtriage (Phenix)	:	2.0
EDS	:	3.0
Percentile statistics	:	20250101.v01 (using entries in the PDB archive January 1st 2025)
CCP4	:	9.0.010 (Gargrove)
Density-Fitness	:	1.0.12
Ideal geometry (proteins)	:	Engh & Huber (2001)
Ideal geometry (DNA, RNA)	:	Parkinson et al. (1996)
Validation Pipeline (wwPDB-VP)	:	2.49

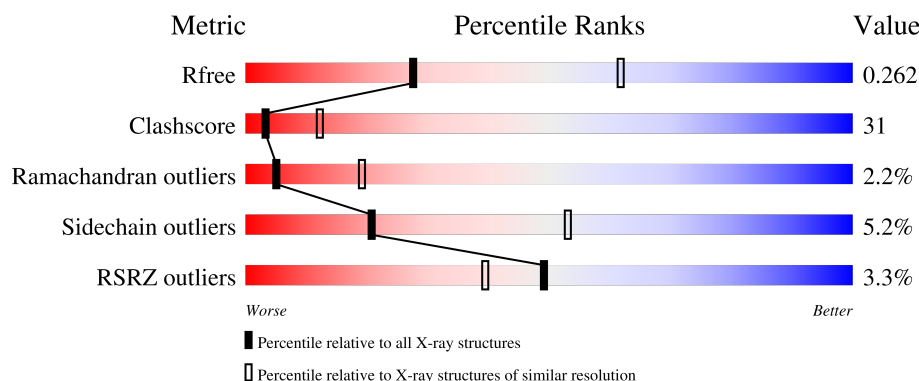
1 Overall quality at a glance

The following experimental techniques were used to determine the structure:

X-RAY DIFFRACTION

The reported resolution of this entry is 2.80 Å.

Percentile scores (ranging between 0-100) for global validation metrics of the entry are shown in the following graphic. The table shows the number of entries on which the scores are based.



Metric	Whole archive (#Entries)	Similar resolution (#Entries, resolution range(Å))
R_{free}	180053	3866 (2.80-2.80)
Clashscore	190562	4276 (2.80-2.80)
Ramachandran outliers	187476	4196 (2.80-2.80)
Sidechain outliers	187428	4198 (2.80-2.80)
RSRZ outliers	180081	3869 (2.80-2.80)

The table below summarises the geometric issues observed across the polymeric chains and their fit to the electron density. The red, orange, yellow and green segments of the lower bar indicate the fraction of residues that contain outliers for ≥ 3 , 2, 1 and 0 types of geometric quality criteria respectively. A grey segment represents the fraction of residues that are not modelled. The numeric value for each fraction is indicated below the corresponding segment, with a dot representing fractions $\leq 5\%$. The upper red bar (where present) indicates the fraction of residues that have poor fit to the electron density. The numeric value is given above the bar.

Mol	Chain	Length	Quality of chain
1	I	432	<div> <div>2%</div> <div> <div></div> <div>50%</div> <div>39%</div> <div>5%</div> <div>5%</div> </div> </div>
1	L	432	<div> <div>4%</div> <div> <div></div> <div>44%</div> <div>44%</div> <div>6%</div> <div>6%</div> </div> </div>
2	C	7	<div> <div>100%</div> </div>
3	D	3	<div> <div>67%</div> <div>33%</div> </div>

The following table lists non-polymeric compounds, carbohydrate monomers and non-standard

residues in protein, DNA, RNA chains that are outliers for geometric or electron-density-fit criteria:

Mol	Type	Chain	Res	Chirality	Geometry	Clashes	Electron density
4	NDG	L	841	-	-	X	-
5	NAG	I	841	-	-	X	-

2 Entry composition

There are 7 unique types of molecules in this entry. The entry contains 6763 atoms, of which 0 are hydrogens and 0 are deuteriums.

In the tables below, the ZeroOcc column contains the number of atoms modelled with zero occupancy, the AltConf column contains the number of residues with at least one atom in alternate conformation and the Trace column contains the number of residues modelled with at most 2 atoms.

- Molecule 1 is a protein called antithrombin-III.

Mol	Chain	Residues	Atoms					ZeroOcc	AltConf	Trace
1	L	406	Total	C	N	O	S	0	0	0
			3249	2073	547	611	18			
1	I	410	Total	C	N	O	S	0	0	0
			3284	2093	554	619	18			

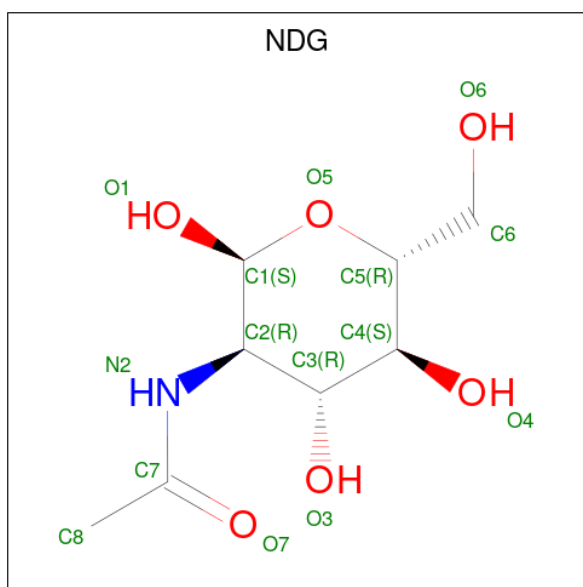
- Molecule 2 is a protein called antithrombin P14-P9 peptide.

Mol	Chain	Residues	Atoms				ZeroOcc	AltConf	Trace
2	C	7	Total	C	N	O	0	0	0
			40	22	6	12			

- Molecule 3 is a protein called exogenous tripeptide formyl-MLF.

Mol	Chain	Residues	Atoms					ZeroOcc	AltConf	Trace
3	D	3	Total	C	N	O	S	0	0	0
			30	21	3	5	1			

- Molecule 4 is 2-acetamido-2-deoxy-alpha-D-glucopyranose (CCD ID: NDG) (formula: C₈H₁₅NO₆).



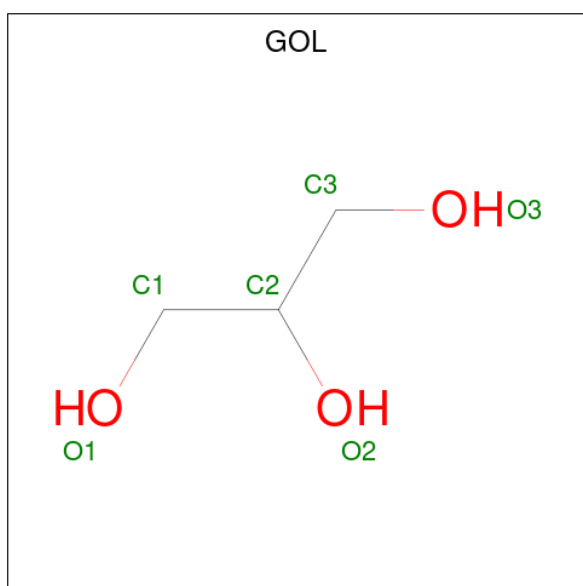
Mol	Chain	Residues	Atoms				ZeroOcc	AltConf
4	L	1	Total	C	N	O	0	0
			15	8	1	6		
4	L	1	Total	C	N	O	0	0
			15	8	1	6		
4	L	1	Total	C	N	O	0	0
			15	8	1	6		
4	I	1	Total	C	N	O	0	0
			15	8	1	6		
4	I	1	Total	C	N	O	0	0
			15	8	1	6		
4	I	1	Total	C	N	O	0	0
			15	8	1	6		

- Molecule 5 is 2-acetamido-2-deoxy-beta-D-glucopyranose (CCD ID: NAG) (formula: $C_8H_{15}NO_6$).



Mol	Chain	Residues	Atoms				ZeroOcc	AltConf
5	I	1	Total	C	N	O	0	0
			15	8	1	6		
5	I	1	Total	C	N	O	0	0
			15	8	1	6		

- Molecule 6 is GLYCEROL (CCD ID: GOL) (formula: $C_3H_8O_3$).



Mol	Chain	Residues	Atoms			ZeroOcc	AltConf
6	C	1	Total	C	O	0	0
			6	3	3		

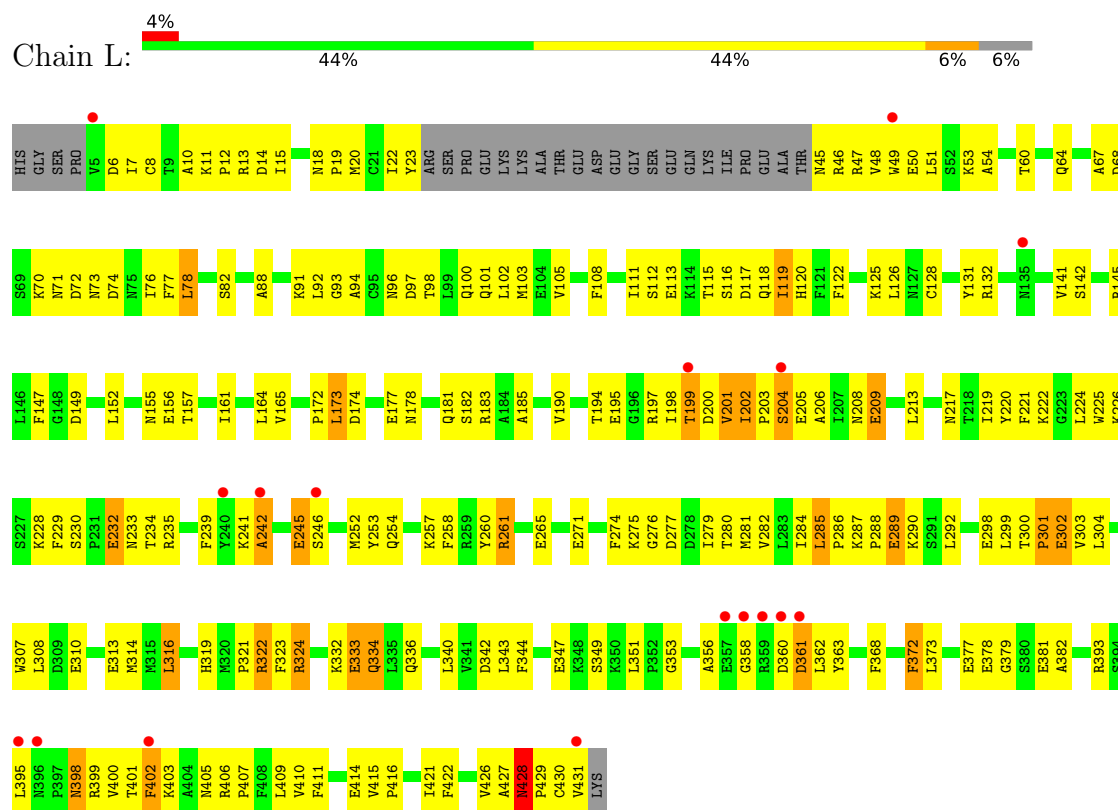
- Molecule 7 is water.

Mol	Chain	Residues	Atoms		ZeroOcc	AltConf
7	L	9	Total 9	O 9	0	0
7	I	25	Total 25	O 25	0	0

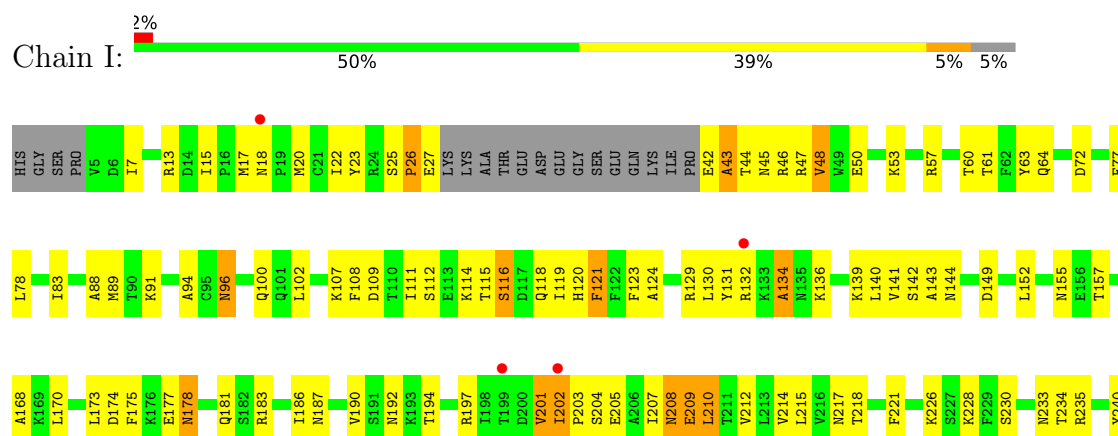
3 Residue-property plots

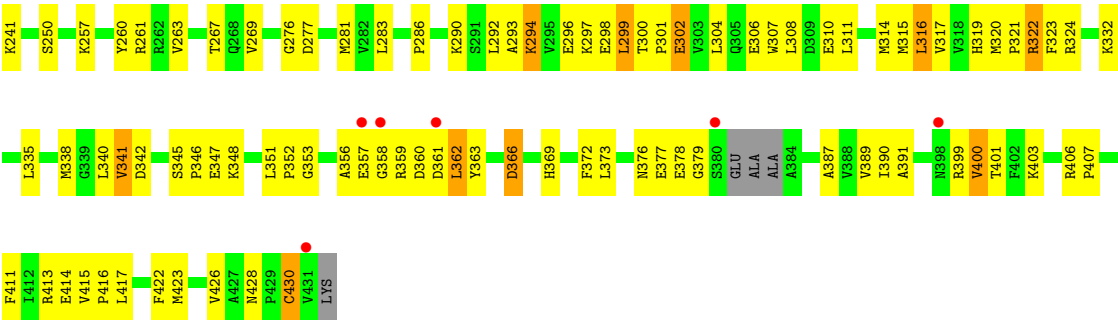
These plots are drawn for all protein, RNA, DNA and oligosaccharide chains in the entry. The first graphic for a chain summarises the proportions of the various outlier classes displayed in the second graphic. The second graphic shows the sequence view annotated by issues in geometry and electron density. Residues are color-coded according to the number of geometric quality criteria for which they contain at least one outlier: green = 0, yellow = 1, orange = 2 and red = 3 or more. A red dot above a residue indicates a poor fit to the electron density ($RSRZ > 2$). Stretches of 2 or more consecutive residues without any outlier are shown as a green connector. Residues present in the sample, but not in the model, are shown in grey.

• Molecule 1: antithrombin-III



• Molecule 1: antithrombin-III



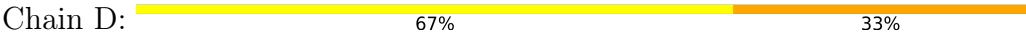


- Molecule 2: antithrombin P14-P9 peptide



There are no outlier residues recorded for this chain.

- Molecule 3: exogenous tripeptide formyl-MLF



4 Data and refinement statistics

Property	Value	Source
Space group	P 1 21 1	Depositor
Cell constants a, b, c, α , β , γ	68.81Å 99.91Å 87.29Å 90.00° 104.44° 90.00°	Depositor
Resolution (Å)	34.03 – 2.80 34.03 – 2.80	Depositor EDS
% Data completeness (in resolution range)	96.6 (34.03-2.80) 96.6 (34.03-2.80)	Depositor EDS
R_{merge}	0.10	Depositor
R_{sym}	0.09	Depositor
$\langle I/\sigma(I) \rangle$ ¹	2.15 (at 2.81Å)	Xtriage
Refinement program	CNS	Depositor
R, R_{free}	0.202 , 0.266 0.194 , 0.262	Depositor DCC
R_{free} test set	1374 reflections (5.02%)	wwPDB-VP
Wilson B-factor (Å ²)	51.4	Xtriage
Anisotropy	0.062	Xtriage
Bulk solvent k_{sol} (e/Å ³), B_{sol} (Å ²)	0.33 , 70.2	EDS
L-test for twinning ²	$\langle L \rangle = 0.50$, $\langle L^2 \rangle = 0.33$	Xtriage
Estimated twinning fraction	No twinning to report.	Xtriage
F_o, F_c correlation	0.94	EDS
Total number of atoms	6763	wwPDB-VP
Average B, all atoms (Å ²)	54.0	wwPDB-VP

Xtriage's analysis on translational NCS is as follows: *The largest off-origin peak in the Patterson function is 5.04% of the height of the origin peak. No significant pseudotranslation is detected.*

¹Intensities estimated from amplitudes.

²Theoretical values of $\langle |L| \rangle$, $\langle L^2 \rangle$ for acentric reflections are 0.5, 0.333 respectively for untwinned datasets, and 0.375, 0.2 for perfectly twinned datasets.

5 Model quality

5.1 Standard geometry

Bond lengths and bond angles in the following residue types are not validated in this section: GOL, NDG, NAG, ACE, FME

The Z score for a bond length (or angle) is the number of standard deviations the observed value is removed from the expected value. A bond length (or angle) with $|Z| > 5$ is considered an outlier worth inspection. RMSZ is the root-mean-square of all Z scores of the bond lengths (or angles).

Mol	Chain	Bond lengths		Bond angles	
		RMSZ	$\# Z > 5$	RMSZ	$\# Z > 5$
1	I	0.47	0/3348	0.96	12/4518 (0.3%)
1	L	0.44	0/3313	0.95	9/4472 (0.2%)
2	C	0.46	0/37	0.61	0/48
3	D	0.52	0/20	0.62	0/24
All	All	0.45	0/6718	0.95	21/9062 (0.2%)

There are no bond length outliers.

All (21) bond angle outliers are listed below:

Mol	Chain	Res	Type	Atoms	Z	Observed(°)	Ideal(°)
1	I	228	LYS	N-CA-C	7.63	121.03	110.35
1	I	322	ARG	N-CA-C	-7.42	100.53	110.55
1	I	341	VAL	N-CA-C	6.75	116.95	111.62
1	I	96	ASN	CB-CA-C	-6.40	109.20	116.63
1	L	96	ASN	CB-CA-C	-6.33	109.29	116.63
1	L	202	ILE	N-CA-C	6.31	114.83	107.77
1	L	88	ALA	N-CA-C	-6.29	104.34	111.14
1	I	88	ALA	N-CA-C	-6.26	104.56	111.82
1	L	322	ARG	N-CA-C	-6.03	99.37	108.96
1	I	72	ASP	N-CA-C	5.82	119.47	112.38
1	L	226	LYS	N-CA-C	-5.59	105.72	112.54
1	I	332	LYS	N-CA-C	5.55	117.80	111.02
1	I	121	PHE	N-CA-C	-5.47	105.40	111.36
1	I	202	ILE	CA-C-N	5.22	125.38	119.90
1	I	202	ILE	C-N-CA	5.22	125.38	119.90
1	I	413	ARG	N-CA-C	5.16	118.14	110.14
1	L	428	ASN	CA-C-N	5.10	126.11	120.45
1	L	428	ASN	C-N-CA	5.10	126.11	120.45
1	L	156	GLU	N-CA-C	5.05	116.86	111.36
1	I	276	GLY	N-CA-C	-5.03	108.20	113.58

Continued on next page...

Continued from previous page...

Mol	Chain	Res	Type	Atoms	Z	Observed(°)	Ideal(°)
1	L	361	ASP	N-CA-C	-5.01	104.39	111.56

There are no chirality outliers.

There are no planarity outliers.

5.2 Too-close contacts ⓘ

In the following table, the Non-H and H(model) columns list the number of non-hydrogen atoms and hydrogen atoms in the chain respectively. The H(added) column lists the number of hydrogen atoms added and optimized by MolProbity. The Clashes column lists the number of clashes within the asymmetric unit, whereas Symm-Clashes lists symmetry-related clashes.

Mol	Chain	Non-H	H(model)	H(added)	Clashes	Symm-Clashes
1	I	3284	0	3284	179	0
1	L	3249	0	3252	223	0
2	C	40	0	34	0	0
3	D	30	0	30	6	0
4	I	45	0	36	7	0
4	L	45	0	36	12	0
5	I	30	0	30	15	0
6	C	6	0	8	0	0
7	I	25	0	0	2	0
7	L	9	0	0	0	0
All	All	6763	0	6710	410	0

The all-atom clashscore is defined as the number of clashes found per 1000 atoms (including hydrogen atoms). The all-atom clashscore for this structure is 31.

All (410) close contacts within the same asymmetric unit are listed below, sorted by their clash magnitude.

Atom-1	Atom-2	Interatomic distance (Å)	Clash overlap (Å)
1:I:20:MET:HE3	1:I:352:PRO:HB2	1.34	1.07
1:L:7:ILE:HD11	1:L:164:LEU:HG	1.49	0.94
1:I:44:THR:HG22	1:I:45:ASN:H	1.36	0.91
1:I:257:LYS:HG3	1:I:315:MET:HE2	1.54	0.90
1:I:319:HIS:HB2	1:I:403:LYS:HA	1.52	0.90
1:I:57:ARG:HH11	1:I:57:ARG:HB3	1.38	0.89
1:I:96:ASN:HD21	4:I:801:NDG:C1	1.89	0.86
1:I:209:GLU:CD	1:I:209:GLU:H	1.82	0.86
1:L:91:LYS:HE2	1:L:103:MET:HE3	1.56	0.85

Continued on next page...

Continued from previous page...

Atom-1	Atom-2	Interatomic distance (Å)	Clash overlap (Å)
1:I:283:LEU:HD11	1:I:320:MET:HE3	1.57	0.85
1:L:71:ASN:HD21	1:L:403:LYS:HE2	1.43	0.83
1:I:300:THR:CG2	1:I:302:GLU:HG2	2.08	0.83
1:L:332:LYS:O	1:L:336:GLN:HG3	1.79	0.82
1:I:129:ARG:HB3	1:I:417:LEU:HD11	1.61	0.82
1:I:111:ILE:HG22	1:I:114:LYS:HG3	1.63	0.80
1:L:398:ASN:N	1:L:398:ASN:HD22	1.81	0.78
1:I:208:ASN:C	1:I:208:ASN:HD22	1.90	0.78
1:I:300:THR:HG21	1:I:302:GLU:HG2	1.64	0.78
1:I:46:ARG:O	1:I:50:GLU:HG3	1.84	0.77
1:L:91:LYS:NZ	1:L:120:HIS:NE2	2.28	0.76
1:L:205:GLU:HB2	1:L:395:LEU:HD21	1.66	0.76
1:I:192:ASN:HD21	5:I:861:NAG:C5	2.00	0.75
1:L:71:ASN:HB3	1:L:74:ASP:OD2	1.87	0.75
1:L:91:LYS:CE	1:L:103:MET:HE3	2.17	0.75
1:I:57:ARG:HB3	1:I:57:ARG:NH1	2.02	0.75
1:I:362:LEU:HD21	3:D:12:PHE:HB3	1.68	0.75
1:I:290:LYS:HE3	1:I:294:LYS:HG2	1.69	0.74
1:L:77:PHE:CE2	1:L:373:LEU:HB2	2.23	0.74
1:L:428:ASN:HD21	1:L:430:CYS:HB2	1.49	0.74
1:I:294:LYS:HA	1:I:294:LYS:HE3	1.70	0.74
1:I:22:ILE:HD12	1:I:115:THR:HG22	1.69	0.74
1:I:174:ASP:OD2	1:I:177:GLU:HB2	1.87	0.74
1:I:115:THR:HB	1:I:118:GLN:NE2	2.03	0.73
1:L:285:LEU:N	1:L:285:LEU:HD23	2.04	0.73
1:I:283:LEU:HD11	1:I:320:MET:CE	2.19	0.73
1:L:45:ASN:ND2	1:L:47:ARG:HH11	1.86	0.72
4:L:841:NDG:H6C1	4:L:842:NDG:C1	2.20	0.72
1:L:230:SER:HB2	1:L:233:ASN:ND2	2.04	0.72
1:I:22:ILE:HD12	1:I:115:THR:CG2	2.19	0.72
1:L:271:GLU:OE2	1:L:280:THR:HG21	1.90	0.72
1:I:96:ASN:ND2	4:I:801:NDG:C1	2.53	0.72
1:L:208:ASN:HD22	1:L:393:ARG:NH1	1.87	0.71
1:I:108:PHE:HB3	1:I:119:ILE:HG12	1.73	0.70
1:L:225:TRP:CD1	1:L:379:GLY:HA2	2.25	0.70
1:I:7:ILE:HG13	1:I:15:ILE:CD1	2.19	0.70
1:L:49:TRP:CH2	1:L:53:LYS:HD2	2.26	0.70
1:I:192:ASN:ND2	5:I:861:NAG:O5	2.25	0.70
1:I:306:GLU:O	1:I:310:GLU:HG3	1.92	0.70
1:L:155:ASN:ND2	4:L:841:NDG:O1	2.25	0.70
1:I:155:ASN:ND2	5:I:841:NAG:O1	2.26	0.69

Continued on next page...

Continued from previous page...

Atom-1	Atom-2	Interatomic distance (Å)	Clash overlap (Å)
1:I:290:LYS:HE3	1:I:294:LYS:CG	2.21	0.69
1:L:190:VAL:HG11	1:L:201:VAL:HG21	1.75	0.69
1:L:410:VAL:HG21	1:L:426:VAL:HG23	1.75	0.69
4:L:841:NDG:H4	4:L:842:NDG:C1	2.22	0.68
1:I:134:ALA:HB3	1:I:136:LYS:HE2	1.76	0.68
1:L:203:PRO:HB2	1:L:395:LEU:HD12	1.75	0.68
1:L:6:ASP:OD1	1:L:8:CYS:HB2	1.93	0.67
1:L:209:GLU:H	1:L:209:GLU:CD	2.01	0.67
1:I:178:ASN:HD22	1:I:178:ASN:N	1.91	0.67
1:I:152:LEU:CD1	1:I:212:VAL:HB	2.25	0.67
4:L:841:NDG:O1	4:L:841:NDG:C7	2.44	0.66
1:L:398:ASN:N	1:L:398:ASN:ND2	2.42	0.66
4:L:841:NDG:H6C1	4:L:842:NDG:O5	1.96	0.66
1:I:83:ILE:HG13	1:I:369:HIS:CE1	2.31	0.66
1:I:183:ARG:NE	1:I:204:SER:HA	2.10	0.66
1:I:22:ILE:HG23	1:I:115:THR:HG23	1.77	0.65
1:L:45:ASN:HD21	1:L:47:ARG:HH11	1.42	0.65
1:L:94:ALA:HA	1:L:351:LEU:HD23	1.78	0.65
1:L:47:ARG:HA	1:L:50:GLU:OE2	1.96	0.65
1:I:60:THR:O	1:I:64:GLN:HG3	1.97	0.64
1:L:428:ASN:ND2	1:L:430:CYS:H	1.95	0.64
1:L:183:ARG:HD2	1:L:203:PRO:O	1.97	0.64
1:L:401:THR:HG22	1:L:402:PHE:N	2.13	0.64
1:L:22:ILE:HG22	1:L:23:TYR:N	2.13	0.63
1:L:300:THR:HB	1:L:303:VAL:HG23	1.80	0.63
1:I:22:ILE:HG23	1:I:115:THR:CG2	2.28	0.63
1:L:254:GLN:NE2	1:L:258:PHE:HZ	1.96	0.62
1:L:287:LYS:HG2	1:L:290:LYS:HB2	1.81	0.62
1:L:155:ASN:HD21	4:L:841:NDG:C5	2.13	0.62
1:I:7:ILE:HG13	1:I:15:ILE:HD11	1.81	0.62
1:I:20:MET:HE3	1:I:352:PRO:CB	2.21	0.62
1:I:144:ASN:O	1:I:168:ALA:HA	1.98	0.62
1:L:260:TYR:CG	1:L:261:ARG:N	2.67	0.62
1:L:298:GLU:O	1:L:303:VAL:HG21	2.00	0.61
1:L:257:LYS:HZ1	1:L:313:GLU:HB3	1.64	0.61
1:L:71:ASN:ND2	1:L:403:LYS:HE2	2.15	0.60
1:L:182:SER:O	1:L:185:ALA:HB3	2.02	0.60
1:L:257:LYS:HA	1:L:314:MET:O	2.02	0.60
1:I:15:ILE:HG22	1:I:17:MET:HE2	1.83	0.60
1:L:18:ASN:N	1:L:19:PRO:HD3	2.17	0.60
1:L:183:ARG:CZ	1:L:204:SER:HA	2.32	0.60

Continued on next page...

Continued from previous page...

Atom-1	Atom-2	Interatomic distance (Å)	Clash overlap (Å)
1:L:101:GLN:O	1:L:105:VAL:HG23	2.01	0.60
1:L:230:SER:HB3	1:L:232:GLU:OE2	2.02	0.60
1:L:233:ASN:HB3	1:L:253:TYR:HB3	1.84	0.60
1:I:366:ASP:HB2	3:D:11:LEU:HD11	1.84	0.60
1:L:91:LYS:HE2	1:L:103:MET:CE	2.30	0.60
1:L:333:GLU:OE1	1:L:333:GLU:N	2.34	0.60
1:I:177:GLU:C	1:I:178:ASN:HD22	2.11	0.59
1:L:232:GLU:CD	1:L:232:GLU:H	2.08	0.59
1:I:186:ILE:HG21	1:I:202:ILE:HD11	1.85	0.59
1:L:284:ILE:C	1:L:285:LEU:HD23	2.28	0.58
1:L:116:SER:O	1:L:119:ILE:HG22	2.03	0.58
1:L:228:LYS:HD3	1:L:378:GLU:HA	1.85	0.58
1:L:22:ILE:HG22	1:L:23:TYR:H	1.69	0.58
1:L:172:PRO:O	1:L:173:LEU:HD12	2.04	0.58
1:L:284:ILE:HD13	1:L:307:TRP:CZ3	2.38	0.58
1:I:15:ILE:HD12	1:I:121:PHE:CE1	2.38	0.58
1:I:322:ARG:O	1:I:323:PHE:HB3	2.03	0.58
1:I:152:LEU:HD11	1:I:212:VAL:HB	1.85	0.58
1:L:46:ARG:O	1:L:50:GLU:HG3	2.04	0.57
1:L:203:PRO:HB2	1:L:395:LEU:CD1	2.33	0.57
1:I:131:TYR:CE2	1:I:142:SER:HB2	2.39	0.57
1:L:281:MET:HA	1:L:411:PHE:O	2.05	0.57
1:I:7:ILE:HG13	1:I:15:ILE:HD13	1.85	0.57
1:I:178:ASN:N	1:I:178:ASN:ND2	2.52	0.57
1:L:257:LYS:NZ	1:L:313:GLU:HB3	2.19	0.57
1:L:119:ILE:HD13	1:L:119:ILE:C	2.29	0.57
1:L:128:CYS:O	1:L:132:ARG:HB2	2.05	0.57
1:L:276:GLY:O	1:L:277:ASP:HB2	2.04	0.57
1:L:125:LYS:O	1:L:128:CYS:HB2	2.05	0.57
1:L:406:ARG:H	1:L:406:ARG:HE	1.52	0.57
1:I:208:ASN:HD21	1:I:210:LEU:HB2	1.70	0.57
1:L:92:LEU:HD13	1:L:161:ILE:HG22	1.87	0.56
1:L:257:LYS:NZ	1:L:257:LYS:HB3	2.20	0.56
1:L:93:GLY:O	1:L:351:LEU:HA	2.05	0.56
1:I:111:ILE:CG2	1:I:114:LYS:HG3	2.34	0.56
1:I:283:LEU:CD1	1:I:320:MET:HE3	2.31	0.56
1:L:102:LEU:HD23	1:L:340:LEU:HD21	1.87	0.56
1:I:45:ASN:CG	1:I:48:VAL:HG13	2.31	0.56
1:L:131:TYR:CE2	1:L:142:SER:HB2	2.41	0.56
1:L:324:ARG:HA	1:L:373:LEU:O	2.06	0.56
1:L:260:TYR:O	1:L:261:ARG:HB2	2.06	0.56

Continued on next page...

Continued from previous page...

Atom-1	Atom-2	Interatomic distance (Å)	Clash overlap (Å)
1:L:7:ILE:HD12	1:L:165:VAL:HA	1.87	0.56
1:L:60:THR:HG22	1:L:299:LEU:HG	1.86	0.56
1:L:288:PRO:O	1:L:289:GLU:HB2	2.06	0.56
1:I:230:SER:HB3	1:I:233:ASN:ND2	2.20	0.56
1:I:300:THR:HG22	1:I:302:GLU:HG2	1.87	0.56
1:L:360:ASP:O	1:L:361:ASP:HB2	2.05	0.56
1:L:372:PHE:O	1:L:382:ALA:HA	2.06	0.56
1:L:360:ASP:HA	1:L:362:LEU:CD1	2.36	0.55
1:I:131:TYR:CZ	1:I:142:SER:HB2	2.41	0.55
1:I:257:LYS:HA	1:I:314:MET:O	2.07	0.55
1:L:284:ILE:HB	1:L:409:LEU:HB2	1.89	0.55
1:I:132:ARG:HD2	1:I:136:LYS:HG3	1.89	0.55
1:I:111:ILE:HG22	1:I:114:LYS:CG	2.35	0.55
1:L:152:LEU:HD22	1:L:358:GLY:HA3	1.89	0.54
1:L:47:ARG:HD2	1:L:47:ARG:N	2.23	0.54
1:L:197:ARG:HG3	1:L:372:PHE:CZ	2.43	0.54
1:L:316:LEU:O	1:L:316:LEU:HD23	2.07	0.54
1:I:178:ASN:HB3	1:I:181:GLN:HB3	1.90	0.54
1:I:208:ASN:C	1:I:208:ASN:ND2	2.62	0.54
1:L:7:ILE:CD1	1:L:165:VAL:HA	2.37	0.54
1:I:53:LYS:O	1:I:57:ARG:HG3	2.08	0.54
1:L:91:LYS:CD	1:L:103:MET:HE3	2.38	0.54
1:I:300:THR:HG23	1:I:301:PRO:HD2	1.91	0.54
1:I:210:LEU:HD12	1:I:210:LEU:N	2.23	0.53
1:I:294:LYS:O	1:I:298:GLU:HG3	2.08	0.53
1:I:300:THR:HG22	1:I:302:GLU:N	2.24	0.53
1:L:421:ILE:HG22	1:L:422:PHE:CD1	2.43	0.53
1:I:61:THR:HG22	1:I:338:MET:HE3	1.89	0.53
1:L:319:HIS:HB2	1:I:390:ILE:HA	1.89	0.53
1:L:205:GLU:HB3	1:L:393:ARG:HE	1.72	0.53
1:L:321:PRO:HD3	1:I:391:ALA:O	2.08	0.53
1:I:186:ILE:HD13	1:I:214:VAL:HG11	1.91	0.53
1:L:265:GLU:O	1:L:287:LYS:HD2	2.09	0.53
1:L:234:THR:C	1:L:235:ARG:HD2	2.34	0.52
1:L:406:ARG:HA	1:L:406:ARG:NE	2.24	0.52
1:L:421:ILE:HG22	1:L:422:PHE:CE1	2.44	0.52
1:L:18:ASN:N	1:L:19:PRO:CD	2.72	0.52
1:L:82:SER:HA	1:L:217:ASN:ND2	2.23	0.52
1:L:119:ILE:HG23	1:L:120:HIS:N	2.24	0.52
1:I:139:LYS:O	1:I:221:PHE:HA	2.09	0.52
1:L:155:ASN:OD1	1:L:155:ASN:C	2.51	0.52

Continued on next page...

Continued from previous page...

Atom-1	Atom-2	Interatomic distance (Å)	Clash overlap (Å)
1:L:203:PRO:HG2	1:L:368:PHE:CE2	2.44	0.52
1:I:121:PHE:O	1:I:124:ALA:HB3	2.09	0.52
1:L:14:ASP:O	1:L:15:ILE:HD13	2.10	0.52
1:L:372:PHE:CD1	1:L:372:PHE:C	2.86	0.52
1:I:89:MET:HB3	1:I:215:LEU:HD11	1.91	0.52
1:L:258:PHE:CD1	1:L:316:LEU:HD21	2.44	0.52
1:I:102:LEU:HD23	1:I:340:LEU:HD11	1.91	0.52
1:I:192:ASN:ND2	5:I:861:NAG:C5	2.71	0.52
1:L:197:ARG:NH1	1:L:381:GLU:OE1	2.43	0.52
1:I:263:VAL:HG23	1:I:267:THR:HB	1.91	0.52
5:I:841:NAG:O4	4:I:842:NDG:H8C3	2.10	0.52
1:L:241:LYS:O	1:L:242:ALA:C	2.52	0.51
1:L:304:LEU:O	1:L:308:LEU:HG	2.10	0.51
1:L:401:THR:HG22	1:L:402:PHE:H	1.76	0.51
1:L:11:LYS:HB3	1:L:12:PRO:HD2	1.92	0.51
1:I:300:THR:HG22	1:I:302:GLU:H	1.76	0.51
1:L:349:SER:OG	1:L:363:TYR:HA	2.10	0.51
1:I:47:ARG:NH1	1:I:114:LYS:HE3	2.26	0.51
1:I:215:LEU:CD2	1:I:217:ASN:HD21	2.24	0.51
1:L:51:LEU:O	1:L:54:ALA:HB3	2.11	0.51
1:L:77:PHE:CZ	1:L:373:LEU:HB2	2.46	0.51
1:L:78:LEU:C	1:L:78:LEU:HD22	2.36	0.51
1:I:359:ARG:O	1:I:359:ARG:HG3	2.11	0.51
3:D:12:PHE:N	3:D:12:PHE:CD1	2.78	0.51
1:L:300:THR:HG22	1:L:301:PRO:HD2	1.92	0.51
1:I:356:ALA:O	1:I:357:GLU:HB3	2.11	0.51
1:L:18:ASN:H	1:L:161:ILE:HD11	1.76	0.50
1:L:178:ASN:HB3	1:L:181:GLN:HG3	1.92	0.50
1:I:155:ASN:ND2	5:I:841:NAG:O5	2.44	0.50
1:I:269:VAL:HG12	1:I:311:LEU:HD21	1.93	0.50
1:L:229:PHE:CD2	1:L:254:GLN:HB2	2.47	0.50
1:L:398:ASN:O	1:L:399:ARG:HB3	2.11	0.50
1:I:42:GLU:O	1:I:43:ALA:HB2	2.12	0.50
1:I:152:LEU:HD12	1:I:212:VAL:HB	1.93	0.50
1:I:44:THR:HG22	1:I:45:ASN:N	2.16	0.50
1:L:155:ASN:ND2	4:L:841:NDG:C1	2.74	0.50
1:I:91:LYS:NZ	1:I:120:HIS:NE2	2.39	0.50
1:I:300:THR:HG23	1:I:302:GLU:OE2	2.12	0.49
5:I:861:NAG:O4	4:I:862:NDG:N2	2.45	0.49
1:L:70:LYS:HD2	1:L:76:ILE:HG12	1.93	0.49
1:I:132:ARG:CD	1:I:136:LYS:HE3	2.43	0.49

Continued on next page...

Continued from previous page...

Atom-1	Atom-2	Interatomic distance (Å)	Clash overlap (Å)
1:I:187:ASN:HD21	1:I:202:ILE:H	1.60	0.49
1:L:141:VAL:HG22	1:L:220:TYR:HB3	1.94	0.49
1:L:324:ARG:H	1:L:431:VAL:CG1	2.25	0.49
1:I:20:MET:HE2	1:I:353:GLY:HA2	1.94	0.49
1:I:23:TYR:CE1	1:I:100:GLN:HG3	2.47	0.49
1:I:25:SER:OG	1:I:109:ASP:HA	2.12	0.49
1:L:145:ARG:HG2	1:L:147:PHE:CE1	2.48	0.49
1:L:398:ASN:ND2	1:L:398:ASN:H	2.09	0.49
1:L:336:GLN:HA	1:L:340:LEU:O	2.13	0.49
1:I:115:THR:CB	1:I:118:GLN:NE2	2.74	0.49
1:I:376:ASN:OD1	1:I:379:GLY:HA2	2.12	0.49
1:L:174:ASP:OD2	1:L:177:GLU:HB2	2.12	0.49
1:L:183:ARG:NH2	1:L:204:SER:HA	2.28	0.49
1:L:199:THR:OG1	1:L:200:ASP:N	2.45	0.48
1:I:260:TYR:CG	1:I:261:ARG:N	2.81	0.48
1:L:410:VAL:CG2	1:L:426:VAL:HG23	2.41	0.48
1:L:209:GLU:CD	1:L:209:GLU:N	2.71	0.48
1:L:274:PHE:HD2	1:L:279:ILE:O	1.96	0.48
1:L:428:ASN:C	1:L:428:ASN:HD22	2.21	0.48
1:L:172:PRO:O	1:L:173:LEU:CD1	2.62	0.48
1:I:15:ILE:HD12	1:I:121:PHE:HE1	1.78	0.48
1:L:322:ARG:HD2	1:L:377:GLU:OE1	2.12	0.48
1:L:406:ARG:HE	1:L:406:ARG:N	2.11	0.48
1:I:250:SER:O	1:I:321:PRO:HA	2.13	0.48
1:L:147:PHE:C	1:L:213:LEU:HD12	2.39	0.48
1:L:115:THR:OG1	1:L:118:GLN:HG2	2.13	0.47
1:L:147:PHE:O	1:L:213:LEU:HD12	2.14	0.47
1:L:224:LEU:HB2	1:L:275:LYS:HD2	1.96	0.47
1:L:410:VAL:HG21	1:L:426:VAL:CG2	2.43	0.47
1:L:230:SER:HB2	1:L:233:ASN:HD22	1.77	0.47
1:I:362:LEU:CD2	3:D:12:PHE:HB3	2.40	0.47
1:L:239:PHE:O	1:L:246:SER:HA	2.14	0.47
1:I:132:ARG:HD2	1:I:136:LYS:HE3	1.96	0.47
1:I:302:GLU:H	1:I:302:GLU:CD	2.22	0.47
1:I:129:ARG:HG2	1:I:417:LEU:HD21	1.96	0.47
1:I:192:ASN:HD21	5:I:861:NAG:H5	1.77	0.47
1:L:103:MET:HE1	1:L:119:ILE:HG21	1.97	0.47
1:I:17:MET:O	1:I:18:ASN:C	2.58	0.47
1:I:215:LEU:HD21	1:I:217:ASN:HD21	1.78	0.47
1:I:362:LEU:HD22	3:D:12:PHE:HD2	1.79	0.47
1:L:18:ASN:O	1:L:19:PRO:C	2.56	0.47

Continued on next page...

Continued from previous page...

Atom-1	Atom-2	Interatomic distance (Å)	Clash overlap (Å)
1:L:198:ILE:HG22	1:L:201:VAL:HG22	1.97	0.47
1:L:300:THR:CG2	1:L:301:PRO:HD2	2.45	0.47
1:I:149:ASP:HA	1:I:173:LEU:O	2.15	0.47
1:I:209:GLU:CD	1:I:209:GLU:N	2.61	0.47
1:I:414:GLU:OE2	1:I:416:PRO:HG2	2.14	0.47
1:I:234:THR:HG21	1:I:322:ARG:CZ	2.45	0.47
1:L:97:ASP:HB2	1:L:342:ASP:OD2	2.15	0.47
1:I:130:LEU:HD23	1:I:417:LEU:HD12	1.96	0.47
1:I:194:THR:O	1:I:197:ARG:HG2	2.14	0.47
1:L:302:GLU:CD	1:L:302:GLU:H	2.23	0.47
1:L:373:LEU:HD13	1:L:382:ALA:HB2	1.97	0.47
1:I:155:ASN:CG	5:I:841:NAG:O1	2.57	0.47
1:L:15:ILE:HD12	1:L:164:LEU:HD21	1.97	0.46
1:L:197:ARG:HG3	1:L:372:PHE:CE2	2.50	0.46
1:L:252:MET:SD	1:L:322:ARG:HG3	2.54	0.46
1:L:316:LEU:HD23	1:L:316:LEU:C	2.40	0.46
1:I:140:LEU:CD1	1:I:221:PHE:HB2	2.46	0.46
1:L:332:LYS:HG3	1:L:344:PHE:CD2	2.50	0.46
1:I:415:VAL:O	1:I:416:PRO:C	2.55	0.46
1:L:7:ILE:CD1	1:L:164:LEU:HG	2.32	0.46
1:L:427:ALA:O	1:L:429:PRO:HD3	2.16	0.46
1:L:406:ARG:NE	1:L:406:ARG:CA	2.79	0.46
1:L:221:PHE:CG	1:L:222:LYS:N	2.83	0.46
1:L:228:LYS:CD	1:L:378:GLU:HA	2.46	0.46
1:I:210:LEU:H	1:I:210:LEU:CD1	2.28	0.46
1:I:57:ARG:HB2	1:I:107:LYS:HG3	1.96	0.46
1:I:346:PRO:HG3	1:I:363:TYR:CZ	2.51	0.46
1:I:47:ARG:NH1	1:I:50:GLU:OE1	2.49	0.46
1:I:94:ALA:HA	1:I:351:LEU:HD23	1.97	0.46
1:I:304:LEU:O	1:I:308:LEU:HG	2.16	0.46
1:L:324:ARG:H	1:L:431:VAL:HG11	1.80	0.46
1:I:26:PRO:O	1:I:27:GLU:C	2.58	0.46
1:L:415:VAL:HB	1:L:416:PRO:HD3	1.98	0.45
1:I:210:LEU:N	1:I:210:LEU:CD1	2.79	0.45
1:L:401:THR:CG2	1:L:402:PHE:N	2.79	0.45
1:I:13:ARG:HB3	1:I:13:ARG:NH1	2.32	0.45
1:L:155:ASN:ND2	4:L:841:NDG:C5	2.78	0.45
1:L:316:LEU:HB2	1:I:387:ALA:O	2.16	0.45
1:I:342:ASP:OD1	1:I:348:LYS:HE2	2.17	0.45
1:L:190:VAL:HG11	1:L:201:VAL:CG2	2.44	0.45
1:L:155:ASN:ND2	4:L:841:NDG:O5	2.48	0.45

Continued on next page...

Continued from previous page...

Atom-1	Atom-2	Interatomic distance (Å)	Clash overlap (Å)
1:L:208:ASN:HD22	1:L:393:ARG:HH12	1.60	0.45
1:L:333:GLU:H	1:L:333:GLU:CD	2.14	0.45
4:L:841:NDG:O1	4:L:841:NDG:C8	2.65	0.45
1:I:170:LEU:HD13	1:I:170:LEU:O	2.16	0.45
1:I:358:GLY:C	1:I:360:ASP:H	2.23	0.45
3:D:11:LEU:O	3:D:11:LEU:HD12	2.16	0.45
1:L:10:ALA:HB1	1:L:14:ASP:HB2	1.98	0.45
1:L:407:PRO:HB3	1:L:427:ALA:HB2	1.99	0.45
1:I:240:TYR:N	1:I:240:TYR:CD1	2.84	0.45
1:L:20:MET:HE3	1:L:353:GLY:HA2	1.98	0.45
1:L:378:GLU:CD	1:L:378:GLU:H	2.25	0.45
1:I:286:PRO:HA	7:I:865:HOH:O	2.17	0.45
1:I:341:VAL:HG23	1:I:342:ASP:N	2.32	0.45
1:L:13:ARG:C	1:L:15:ILE:H	2.24	0.44
1:L:103:MET:HE2	1:L:103:MET:HA	1.99	0.44
1:L:225:TRP:CG	1:L:379:GLY:HA2	2.50	0.44
1:L:406:ARG:HE	1:L:406:ARG:CA	2.30	0.44
1:L:22:ILE:CG2	1:L:23:TYR:N	2.81	0.44
1:L:108:PHE:HB3	1:L:119:ILE:HG13	1.98	0.44
1:L:115:THR:HB	1:L:117:ASP:OD2	2.18	0.44
1:L:149:ASP:HA	1:L:173:LEU:O	2.18	0.44
1:L:194:THR:O	1:L:197:ARG:HB2	2.18	0.44
1:L:111:ILE:O	1:L:113:GLU:N	2.51	0.44
1:L:285:LEU:N	1:L:285:LEU:CD2	2.75	0.44
1:L:334:GLN:CD	1:L:334:GLN:H	2.24	0.44
1:I:314:MET:HE3	1:I:314:MET:HB2	1.92	0.44
1:I:322:ARG:NH2	1:I:377:GLU:OE2	2.50	0.44
5:I:841:NAG:O4	4:I:842:NDG:O7	2.35	0.43
1:L:356:ALA:HB1	4:L:841:NDG:C8	2.49	0.43
1:I:347:GLU:N	1:I:347:GLU:OE1	2.50	0.43
1:L:206:ALA:HB2	1:L:395:LEU:HD12	2.01	0.43
1:L:414:GLU:CD	1:L:416:PRO:HD2	2.43	0.43
1:I:341:VAL:HG23	1:I:342:ASP:H	1.83	0.43
1:L:49:TRP:CZ3	1:L:53:LYS:HD2	2.53	0.43
1:L:393:ARG:NH1	1:L:393:ARG:HB2	2.33	0.43
1:I:45:ASN:HB3	1:I:48:VAL:HG22	2.01	0.43
1:I:316:LEU:HB3	1:I:400:VAL:HG13	1.99	0.43
1:L:48:VAL:O	1:L:51:LEU:HB3	2.19	0.43
1:L:347:GLU:N	1:L:347:GLU:CD	2.77	0.43
1:I:324:ARG:HA	1:I:373:LEU:O	2.19	0.43
5:I:841:NAG:O4	4:I:842:NDG:C7	2.67	0.43

Continued on next page...

Continued from previous page...

Atom-1	Atom-2	Interatomic distance (Å)	Clash overlap (Å)
1:L:430:CYS:O	1:L:431:VAL:C	2.62	0.43
1:L:77:PHE:O	1:L:78:LEU:HB3	2.17	0.43
1:L:97:ASP:O	1:L:98:THR:C	2.61	0.43
1:L:126:LEU:HD12	1:L:126:LEU:O	2.19	0.43
1:L:285:LEU:HD11	1:I:389:VAL:HG13	1.99	0.43
1:I:143:ALA:HB3	1:I:218:THR:OG1	2.19	0.43
1:I:190:VAL:HG21	1:I:201:VAL:HG21	2.01	0.42
1:I:377:GLU:O	1:I:378:GLU:HB2	2.19	0.42
1:I:63:TYR:CG	1:I:423:MET:HE2	2.54	0.42
1:I:141:VAL:HG12	1:I:142:SER:N	2.34	0.42
1:L:217:ASN:HD21	1:L:219:ILE:HG13	1.84	0.42
1:L:131:TYR:CZ	1:L:142:SER:HB2	2.54	0.42
1:I:155:ASN:OD1	1:I:157:THR:N	2.52	0.42
1:L:45:ASN:HD21	1:L:47:ARG:HD3	1.85	0.42
1:L:194:THR:HG21	1:L:198:ILE:HB	2.00	0.42
1:L:287:LYS:O	1:L:290:LYS:HB2	2.19	0.42
1:I:175:PHE:O	1:I:209:GLU:HA	2.20	0.42
1:I:215:LEU:HD23	1:I:215:LEU:C	2.44	0.42
1:L:155:ASN:OD1	1:L:157:THR:N	2.52	0.42
1:L:245:GLU:H	1:L:245:GLU:CD	2.26	0.42
1:L:287:LYS:HG2	1:L:290:LYS:CG	2.50	0.42
1:L:414:GLU:OE1	1:L:416:PRO:HD2	2.19	0.42
1:I:226:LYS:NZ	1:I:277:ASP:OD1	2.40	0.42
1:L:23:TYR:CZ	1:L:100:GLN:HG3	2.55	0.42
1:L:71:ASN:O	1:L:73:ASN:N	2.53	0.42
1:L:202:ILE:HA	1:L:203:PRO:HD3	1.86	0.42
1:I:23:TYR:HB3	1:I:116:SER:HB3	2.01	0.42
1:I:77:PHE:CZ	1:I:422:PHE:HB3	2.54	0.42
1:I:292:LEU:O	1:I:296:GLU:HG3	2.19	0.42
5:I:841:NAG:HO4	4:I:842:NDG:C7	2.31	0.42
1:I:197:ARG:NH2	1:I:372:PHE:CZ	2.87	0.42
1:I:356:ALA:HB1	5:I:841:NAG:H81	2.01	0.42
1:I:192:ASN:ND2	5:I:861:NAG:H61	2.35	0.41
1:I:45:ASN:OD1	1:I:48:VAL:HG13	2.19	0.41
1:L:334:GLN:CD	1:L:334:GLN:N	2.78	0.41
1:I:281:MET:HA	1:I:411:PHE:O	2.20	0.41
1:L:197:ARG:NH1	1:L:381:GLU:OE2	2.53	0.41
1:I:203:PRO:O	1:I:204:SER:C	2.64	0.41
1:I:407:PRO:HA	1:I:426:VAL:O	2.20	0.41
1:L:64:GLN:O	1:L:67:ALA:HB3	2.19	0.41
1:L:68:ASP:C	1:L:70:LYS:H	2.29	0.41

Continued on next page...

Continued from previous page...

Atom-1	Atom-2	Interatomic distance (Å)	Clash overlap (Å)
1:L:286:PRO:HD3	1:L:292:LEU:HD13	2.02	0.41
1:L:103:MET:HE2	1:L:108:PHE:HB2	2.02	0.41
1:L:258:PHE:CD1	1:L:316:LEU:CD2	3.04	0.41
1:L:324:ARG:O	1:L:431:VAL:HG12	2.20	0.41
1:L:195:GLU:HG2	1:L:220:TYR:CE1	2.56	0.41
1:L:257:LYS:HB3	1:L:257:LYS:HZ3	1.85	0.41
1:I:140:LEU:HD12	1:I:221:PHE:HB2	2.02	0.41
1:I:269:VAL:CG1	1:I:311:LEU:HD21	2.50	0.41
1:L:229:PHE:O	1:L:377:GLU:HB3	2.21	0.41
1:L:323:PHE:HB2	1:L:431:VAL:CG1	2.51	0.41
1:I:187:ASN:ND2	1:I:201:VAL:HG23	2.36	0.41
1:I:263:VAL:HG11	1:I:307:TRP:CD1	2.55	0.41
1:I:300:THR:CG2	1:I:302:GLU:OE2	2.68	0.41
1:L:208:ASN:HB2	1:L:209:GLU:OE2	2.20	0.41
1:I:15:ILE:HD12	1:I:121:PHE:CD1	2.56	0.41
1:I:155:ASN:ND2	5:I:841:NAG:C1	2.84	0.41
1:I:202:ILE:HA	1:I:203:PRO:HD3	1.77	0.41
1:I:233:ASN:O	1:I:235:ARG:HG3	2.21	0.41
1:I:317:VAL:HG22	1:I:399:ARG:HE	1.86	0.41
1:I:335:LEU:HD23	1:I:335:LEU:HA	1.83	0.41
1:I:345:SER:HB3	1:I:348:LYS:HB2	2.03	0.41
1:I:406:ARG:HD2	7:I:870:HOH:O	2.21	0.41
1:L:428:ASN:ND2	1:L:428:ASN:C	2.78	0.41
1:I:13:ARG:HH11	1:I:13:ARG:CB	2.34	0.41
1:L:45:ASN:N	1:L:48:VAL:HG23	2.36	0.40
1:I:428:ASN:OD1	1:I:430:CYS:HB2	2.20	0.40
1:I:411:PHE:CD1	1:I:411:PHE:N	2.89	0.40
1:I:293:ALA:O	1:I:297:LYS:HG3	2.22	0.40
1:L:122:PHE:O	1:L:125:LYS:HB2	2.21	0.40
1:L:282:VAL:HB	1:L:411:PHE:HB2	2.02	0.40
1:L:356:ALA:HB1	4:L:841:NDG:H8C2	2.04	0.40
1:I:299:LEU:HD12	1:I:299:LEU:HA	1.75	0.40

There are no symmetry-related clashes.

5.3 Torsion angles ⓘ

5.3.1 Protein backbone ⓘ

In the following table, the Percentiles column shows the percent Ramachandran outliers of the chain as a percentile score with respect to all X-ray entries followed by that with respect to entries

of similar resolution.

The Analysed column shows the number of residues for which the backbone conformation was analysed, and the total number of residues.

Mol	Chain	Analysed	Favoured	Allowed	Outliers	Percentiles	
1	I	404/432 (94%)	356 (88%)	39 (10%)	9 (2%)	5	19
1	L	402/432 (93%)	350 (87%)	43 (11%)	9 (2%)	5	19
2	C	5/7 (71%)	5 (100%)	0	0	100	100
3	D	1/3 (33%)	1 (100%)	0	0	100	100
All	All	812/874 (93%)	712 (88%)	82 (10%)	18 (2%)	5	19

All (18) Ramachandran outliers are listed below:

Mol	Chain	Res	Type
1	L	242	ALA
1	L	402	PHE
1	I	43	ALA
1	I	361	ASP
1	I	430	CYS
1	L	72	ASP
1	L	112	SER
1	L	204	SER
1	L	261	ARG
1	L	343	LEU
1	I	26	PRO
1	I	112	SER
1	I	207	ILE
1	L	310	GLU
1	I	116	SER
1	I	134	ALA
1	I	299	LEU
1	L	400	VAL

5.3.2 Protein sidechains ⓘ

In the following table, the Percentiles column shows the percent sidechain outliers of the chain as a percentile score with respect to all X-ray entries followed by that with respect to entries of similar resolution.

The Analysed column shows the number of residues for which the sidechain conformation was analysed, and the total number of residues.

Mol	Chain	Analysed	Rotameric	Outliers	Percentiles	
1	I	366/383 (96%)	349 (95%)	17 (5%)	24	58
1	L	361/383 (94%)	341 (94%)	20 (6%)	19	51
2	C	3/3 (100%)	3 (100%)	0	100	100
3	D	2/2 (100%)	1 (50%)	1 (50%)	0	0
All	All	732/771 (95%)	694 (95%)	38 (5%)	21	53

All (38) residues with a non-rotameric sidechain are listed below:

Mol	Chain	Res	Type
1	L	78	LEU
1	L	119	ILE
1	L	173	LEU
1	L	199	THR
1	L	201	VAL
1	L	209	GLU
1	L	232	GLU
1	L	245	GLU
1	L	285	LEU
1	L	289	GLU
1	L	301	PRO
1	L	302	GLU
1	L	316	LEU
1	L	324	ARG
1	L	333	GLU
1	L	334	GLN
1	L	372	PHE
1	L	398	ASN
1	L	405	ASN
1	L	428	ASN
1	I	48	VAL
1	I	78	LEU
1	I	123	PHE
1	I	178	ASN
1	I	201	VAL
1	I	205	GLU
1	I	208	ASN
1	I	209	GLU
1	I	210	LEU
1	I	241	LYS
1	I	294	LYS
1	I	302	GLU
1	I	316	LEU

Continued on next page...

Continued from previous page...

Mol	Chain	Res	Type
1	I	362	LEU
1	I	366	ASP
1	I	400	VAL
1	I	401	THR
3	D	12	PHE

Sometimes sidechains can be flipped to improve hydrogen bonding and reduce clashes. All (24) such sidechains are listed below:

Mol	Chain	Res	Type
1	L	45	ASN
1	L	73	ASN
1	L	96	ASN
1	L	127	ASN
1	L	135	ASN
1	L	208	ASN
1	L	217	ASN
1	L	233	ASN
1	L	254	GLN
1	L	268	GLN
1	L	398	ASN
1	L	428	ASN
1	I	73	ASN
1	I	96	ASN
1	I	118	GLN
1	I	127	ASN
1	I	178	ASN
1	I	187	ASN
1	I	192	ASN
1	I	208	ASN
1	I	217	ASN
1	I	233	ASN
1	I	254	GLN
1	I	336	GLN

5.3.3 RNA ⓘ

There are no RNA molecules in this entry.

5.4 Non-standard residues in protein, DNA, RNA chains ⓘ

1 non-standard protein/DNA/RNA residue is modelled in this entry.

In the following table, the Counts columns list the number of bonds (or angles) for which Mogul statistics could be retrieved, the number of bonds (or angles) that are observed in the model and the number of bonds (or angles) that are defined in the Chemical Component Dictionary. The Link column lists molecule types, if any, to which the group is linked. The Z score for a bond length (or angle) is the number of standard deviations the observed value is removed from the expected value. A bond length (or angle) with $|Z| > 2$ is considered an outlier worth inspection. RMSZ is the root-mean-square of all Z scores of the bond lengths (or angles).

Mol	Type	Chain	Res	Link	Bond lengths			Bond angles		
					Counts	RMSZ	$\# Z > 2$	Counts	RMSZ	$\# Z > 2$
3	FME	D	10	3	8,9,10	0.67	0	8,9,11	1.00	1 (12%)

In the following table, the Chirals column lists the number of chiral outliers, the number of chiral centers analysed, the number of these observed in the model and the number defined in the Chemical Component Dictionary. Similar counts are reported in the Torsion and Rings columns. '-' means no outliers of that kind were identified.

Mol	Type	Chain	Res	Link	Chirals	Torsions	Rings
3	FME	D	10	3	-	2/7/9/11	-

There are no bond length outliers.

All (1) bond angle outliers are listed below:

Mol	Chain	Res	Type	Atoms	Z	Observed(°)	Ideal(°)
3	D	10	FME	C-CA-N	2.09	113.53	109.50

There are no chirality outliers.

All (2) torsion outliers are listed below:

Mol	Chain	Res	Type	Atoms
3	D	10	FME	O1-CN-N-CA
3	D	10	FME	CB-CA-N-CN

There are no ring outliers.

No monomer is involved in short contacts.

5.5 Carbohydrates [i](#)

There are no oligosaccharides in this entry.

5.6 Ligand geometry [i](#)

9 ligands are modelled in this entry.

In the following table, the Counts columns list the number of bonds (or angles) for which Mogul statistics could be retrieved, the number of bonds (or angles) that are observed in the model and the number of bonds (or angles) that are defined in the Chemical Component Dictionary. The Link column lists molecule types, if any, to which the group is linked. The Z score for a bond length (or angle) is the number of standard deviations the observed value is removed from the expected value. A bond length (or angle) with $|Z| > 2$ is considered an outlier worth inspection. RMSZ is the root-mean-square of all Z scores of the bond lengths (or angles).

Mol	Type	Chain	Res	Link	Bond lengths			Bond angles		
					Counts	RMSZ	$\# Z > 2$	Counts	RMSZ	$\# Z > 2$
5	NAG	I	861	-	15,15,15	0.46	0	21,21,21	0.61	0
4	NDG	I	862	-	15,15,15	0.41	0	21,21,21	0.66	0
6	GOL	C	100	-	5,5,5	1.03	0	5,5,5	0.60	0
4	NDG	I	801	-	15,15,15	0.41	0	21,21,21	0.66	0
4	NDG	I	842	-	15,15,15	0.57	0	21,21,21	0.56	0
5	NAG	I	841	-	15,15,15	0.44	0	21,21,21	0.58	0
4	NDG	L	801	-	15,15,15	0.49	0	21,21,21	0.62	0
4	NDG	L	841	-	15,15,15	0.54	0	21,21,21	0.61	0
4	NDG	L	842	-	15,15,15	0.52	0	21,21,21	0.65	0

In the following table, the Chirals column lists the number of chiral outliers, the number of chiral centers analysed, the number of these observed in the model and the number defined in the Chemical Component Dictionary. Similar counts are reported in the Torsion and Rings columns. '-' means no outliers of that kind were identified.

Mol	Type	Chain	Res	Link	Chirals	Torsions	Rings
5	NAG	I	861	-	-	5/6/26/26	0/1/1/1
4	NDG	I	862	-	-	4/6/26/26	0/1/1/1
6	GOL	C	100	-	-	1/4/4/4	-
4	NDG	I	801	-	-	4/6/26/26	0/1/1/1
4	NDG	I	842	-	-	5/6/26/26	0/1/1/1
5	NAG	I	841	-	-	6/6/26/26	0/1/1/1
4	NDG	L	801	-	-	5/6/26/26	0/1/1/1
4	NDG	L	841	-	-	5/6/26/26	0/1/1/1
4	NDG	L	842	-	-	4/6/26/26	0/1/1/1

There are no bond length outliers.

There are no bond angle outliers.

There are no chirality outliers.

All (39) torsion outliers are listed below:

Mol	Chain	Res	Type	Atoms
4	L	801	NDG	C1-C2-N2-C7
4	L	801	NDG	C8-C7-N2-C2
4	L	801	NDG	O7-C7-N2-C2
4	L	841	NDG	C1-C2-N2-C7
4	L	841	NDG	C8-C7-N2-C2
4	L	841	NDG	O7-C7-N2-C2
4	L	842	NDG	C8-C7-N2-C2
4	L	842	NDG	O7-C7-N2-C2
4	I	801	NDG	C1-C2-N2-C7
4	I	801	NDG	C8-C7-N2-C2
4	I	801	NDG	O7-C7-N2-C2
4	I	842	NDG	C1-C2-N2-C7
4	I	842	NDG	C8-C7-N2-C2
4	I	842	NDG	O7-C7-N2-C2
4	I	862	NDG	C8-C7-N2-C2
4	I	862	NDG	O7-C7-N2-C2
5	I	841	NAG	C8-C7-N2-C2
5	I	841	NAG	O7-C7-N2-C2
5	I	861	NAG	C1-C2-N2-C7
5	I	861	NAG	C8-C7-N2-C2
5	I	861	NAG	O7-C7-N2-C2
5	I	841	NAG	O5-C5-C6-O6
4	I	862	NDG	O5-C5-C6-O6
5	I	841	NAG	C4-C5-C6-O6
4	L	842	NDG	O5-C5-C6-O6
4	I	842	NDG	O5-C5-C6-O6
4	L	841	NDG	O5-C5-C6-O6
4	L	842	NDG	C4-C5-C6-O6
4	L	801	NDG	O5-C5-C6-O6
4	I	862	NDG	C4-C5-C6-O6
5	I	841	NAG	C3-C2-N2-C7
4	L	841	NDG	C4-C5-C6-O6
6	C	100	GOL	O1-C1-C2-C3
5	I	861	NAG	O5-C5-C6-O6
4	I	842	NDG	C4-C5-C6-O6
4	L	801	NDG	C4-C5-C6-O6
4	I	801	NDG	O5-C5-C6-O6

Continued on next page...

Continued from previous page...

Mol	Chain	Res	Type	Atoms
5	I	861	NAG	C3-C2-N2-C7
5	I	841	NAG	C1-C2-N2-C7

There are no ring outliers.

7 monomers are involved in 29 short contacts:

Mol	Chain	Res	Type	Clashes	Symm-Clashes
5	I	861	NAG	6	0
4	I	862	NDG	1	0
4	I	801	NDG	2	0
4	I	842	NDG	4	0
5	I	841	NAG	9	0
4	L	841	NDG	12	0
4	L	842	NDG	3	0

5.7 Other polymers [i](#)

There are no such residues in this entry.

5.8 Polymer linkage issues [i](#)

There are no chain breaks in this entry.

6 Fit of model and data

6.1 Protein, DNA and RNA chains

In the following table, the column labelled ‘#RSRZ> 2’ contains the number (and percentage) of RSRZ outliers, followed by percent RSRZ outliers for the chain as percentile scores relative to all X-ray entries and entries of similar resolution. The OWAB column contains the minimum, median, 95th percentile and maximum values of the occupancy-weighted average B-factor per residue. The column labelled ‘Q< 0.9’ lists the number of (and percentage) of residues with an average occupancy less than 0.9.

Mol	Chain	Analysed	<RSRZ>	#RSRZ>2	OWAB(Å ²)	Q<0.9
1	I	410/432 (94%)	-0.25	10 (2%) 59 49	18, 43, 84, 200	0
1	L	406/432 (93%)	0.04	17 (4%) 40 32	20, 49, 114, 179	0
2	C	6/7 (85%)	-0.61	0 100 100	26, 34, 38, 42	0
3	D	2/3 (66%)	0.52	0 100 100	48, 48, 48, 52	0
All	All	824/874 (94%)	-0.11	27 (3%) 49 39	18, 46, 107, 200	0

All (27) RSRZ outliers are listed below:

Mol	Chain	Res	Type	RSRZ
1	L	431	VAL	4.3
1	L	240	TYR	4.1
1	I	380	SER	3.8
1	L	359	ARG	3.5
1	L	246	SER	3.1
1	L	360	ASP	3.1
1	L	357	GLU	3.0
1	I	361	ASP	2.8
1	I	431	VAL	2.7
1	L	135	ASN	2.7
1	L	395	LEU	2.7
1	L	402	PHE	2.6
1	I	357	GLU	2.5
1	L	199	THR	2.4
1	L	358	GLY	2.3
1	L	396	ASN	2.3
1	L	5	VAL	2.3
1	I	18	ASN	2.2
1	I	132	ARG	2.2
1	L	361	ASP	2.2
1	L	204	SER	2.2

Continued on next page...

Continued from previous page...

Mol	Chain	Res	Type	RSRZ
1	I	358	GLY	2.1
1	I	398	ASN	2.1
1	I	202	ILE	2.1
1	I	199	THR	2.1
1	L	49	TRP	2.1
1	L	242	ALA	2.0

6.2 Non-standard residues in protein, DNA, RNA chains [i](#)

In the following table, the Atoms column lists the number of modelled atoms in the group and the number defined in the chemical component dictionary. The B-factors column lists the minimum, median, 95th percentile and maximum values of B factors of atoms in the group. The column labelled 'Q< 0.9' lists the number of atoms with occupancy less than 0.9.

Mol	Type	Chain	Res	Atoms	RSCC	RSR	B-factors(Å ²)	Q<0.9
3	FME	D	10	10/11	0.96	0.09	36,36,39,39	0

6.3 Carbohydrates [i](#)

There are no oligosaccharides in this entry.

6.4 Ligands [i](#)

In the following table, the Atoms column lists the number of modelled atoms in the group and the number defined in the chemical component dictionary. The B-factors column lists the minimum, median, 95th percentile and maximum values of B factors of atoms in the group. The column labelled 'Q< 0.9' lists the number of atoms with occupancy less than 0.9.

Mol	Type	Chain	Res	Atoms	RSCC	RSR	B-factors(Å ²)	Q<0.9
4	NDG	I	862	15/15	0.45	0.17	113,113,113,113	0
4	NDG	L	842	15/15	0.62	0.15	109,109,109,109	0
5	NAG	I	861	15/15	0.67	0.17	103,103,103,103	0
4	NDG	I	842	15/15	0.71	0.15	137,137,137,137	0
4	NDG	L	801	15/15	0.73	0.17	118,118,118,118	0
4	NDG	L	841	15/15	0.79	0.14	85,85,85,85	0
4	NDG	I	801	15/15	0.83	0.13	83,83,83,83	0
5	NAG	I	841	15/15	0.84	0.15	66,66,66,66	0
6	GOL	C	100	6/6	0.95	0.12	52,52,52,52	0

6.5 Other polymers [i](#)

There are no such residues in this entry.