



Full wwPDB X-ray Structure Validation Report ⓘ

Mar 14, 2026 – 02:02 AM UTC

PDB ID : 1WAV / pdb_00001wav
Title : CRYSTAL STRUCTURE OF FORM B MONOCLINIC CRYSTAL OF INSULIN
Authors : Liang, D.-C.; Ding, J.-H.; Chang, W.-R.; Wan, Z.-L.
Deposited on : 1996-02-28
Resolution : 2.50 Å(reported)

This is a Full wwPDB X-ray Structure Validation Report for a publicly released PDB entry.

We welcome your comments at validation@mail.wwpdb.org

A user guide is available at

<https://www.wwpdb.org/validation/2017/XrayValidationReportHelp>

with specific help available everywhere you see the ⓘ symbol.

The types of validation reports are described at

<http://www.wwpdb.org/validation/2017/FAQs#types>.

The following versions of software and data (see [references ⓘ](#)) were used in the production of this report:

MolProbity	:	4-5-2 with Phenix2.0
Mogul	:	2022.3.0, CSD as543be (2022)
Xtriage (Phenix)	:	2.0
EDS	:	3.0
Percentile statistics	:	20250101.v01 (using entries in the PDB archive January 1st 2025)
CCP4	:	9.0.010 (Gargrove)
Density-Fitness	:	1.0.12
Ideal geometry (proteins)	:	Engh & Huber (2001)
Ideal geometry (DNA, RNA)	:	Parkinson et al. (1996)
Validation Pipeline (wwPDB-VP)	:	2.49

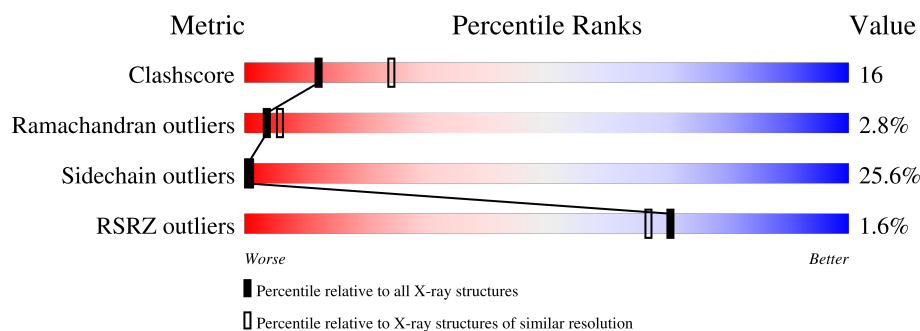
1 Overall quality at a glance

The following experimental techniques were used to determine the structure:

X-RAY DIFFRACTION

The reported resolution of this entry is 2.50 Å.

Percentile scores (ranging between 0-100) for global validation metrics of the entry are shown in the following graphic. The table shows the number of entries on which the scores are based.



Metric	Whole archive (#Entries)	Similar resolution (#Entries, resolution range(Å))
Clashscore	190562	6492 (2.50-2.50)
Ramachandran outliers	187476	6378 (2.50-2.50)
Sidechain outliers	187428	6380 (2.50-2.50)
RSRZ outliers	180081	5833 (2.50-2.50)

The table below summarises the geometric issues observed across the polymeric chains and their fit to the electron density. The red, orange, yellow and green segments of the lower bar indicate the fraction of residues that contain outliers for ≥ 3 , 2, 1 and 0 types of geometric quality criteria respectively. A grey segment represents the fraction of residues that are not modelled. The numeric value for each fraction is indicated below the corresponding segment, with a dot representing fractions $\leq 5\%$. The upper red bar (where present) indicates the fraction of residues that have poor fit to the electron density. The numeric value is given above the bar.

Mol	Chain	Length	Quality of chain
1	A	21	
1	C	21	
1	E	21	
1	G	21	
1	I	21	
1	K	21	
2	B	30	

Continued on next page...

Continued from previous page...

Mol	Chain	Length	Quality of chain
2	D	30	
2	F	30	
2	H	30	
2	J	30	
2	L	30	

The following table lists non-polymeric compounds, carbohydrate monomers and non-standard residues in protein, DNA, RNA chains that are outliers for geometric or electron-density-fit criteria:

Mol	Type	Chain	Res	Chirality	Geometry	Clashes	Electron density
4	ZN	D	31	-	-	-	X

2 Entry composition

There are 5 unique types of molecules in this entry. The entry contains 2574 atoms, of which 0 are hydrogens and 0 are deuteriums.

In the tables below, the ZeroOcc column contains the number of atoms modelled with zero occupancy, the AltConf column contains the number of residues with at least one atom in alternate conformation and the Trace column contains the number of residues modelled with at most 2 atoms.

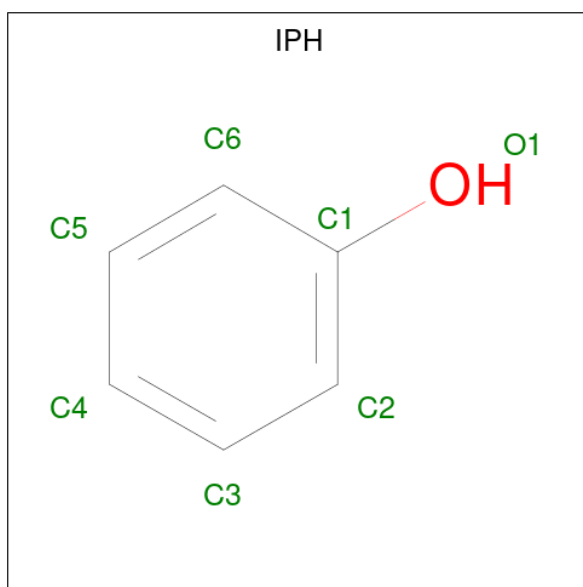
- Molecule 1 is a protein called INSULIN.

Mol	Chain	Residues	Atoms					ZeroOcc	AltConf	Trace
1	A	21	Total	C	N	O	S	0	0	0
			163	99	25	35	4			
1	C	21	Total	C	N	O	S	0	0	0
			163	99	25	35	4			
1	E	21	Total	C	N	O	S	0	0	0
			163	99	25	35	4			
1	G	21	Total	C	N	O	S	0	0	0
			163	99	25	35	4			
1	I	21	Total	C	N	O	S	0	0	0
			163	99	25	35	4			
1	K	21	Total	C	N	O	S	0	0	0
			163	99	25	35	4			

- Molecule 2 is a protein called INSULIN.

Mol	Chain	Residues	Atoms					ZeroOcc	AltConf	Trace
2	B	30	Total	C	N	O	S	0	0	0
			240	157	40	41	2			
2	D	30	Total	C	N	O	S	0	0	0
			240	157	40	41	2			
2	F	30	Total	C	N	O	S	0	0	0
			240	157	40	41	2			
2	H	30	Total	C	N	O	S	0	0	0
			240	157	40	41	2			
2	J	30	Total	C	N	O	S	0	0	0
			240	157	40	41	2			
2	L	30	Total	C	N	O	S	0	0	0
			240	157	40	41	2			

- Molecule 3 is PHENOL (CCD ID: IPH) (formula: C₆H₆O).



Mol	Chain	Residues	Atoms			ZeroOcc	AltConf
3	A	1	Total	C	O	0	0
			7	6	1		
3	C	1	Total	C	O	0	0
			7	6	1		
3	F	1	Total	C	O	0	0
			7	6	1		
3	G	1	Total	C	O	0	0
			7	6	1		
3	H	1	Total	C	O	0	0
			7	6	1		
3	J	1	Total	C	O	0	0
			7	6	1		

- Molecule 4 is ZINC ION (CCD ID: ZN) (formula: Zn).

Mol	Chain	Residues	Atoms		ZeroOcc	AltConf
4	B	1	Total	Zn	0	0
			1	1		
4	D	1	Total	Zn	0	0
			1	1		

- Molecule 5 is water.

Mol	Chain	Residues	Atoms		ZeroOcc	AltConf
5	A	12	Total	O	0	0
			12	12		

Continued on next page...

Continued from previous page...

Mol	Chain	Residues	Atoms		ZeroOcc	AltConf
5	B	8	Total 8	O 8	0	0
5	C	9	Total 9	O 9	0	0
5	D	10	Total 10	O 10	0	0
5	E	9	Total 9	O 9	0	0
5	F	15	Total 15	O 15	0	0
5	G	6	Total 6	O 6	0	0
5	H	13	Total 13	O 13	0	0
5	I	8	Total 8	O 8	0	0
5	J	10	Total 10	O 10	0	0
5	K	6	Total 6	O 6	0	0
5	L	6	Total 6	O 6	0	0

3 Residue-property plots [i](#)

These plots are drawn for all protein, RNA, DNA and oligosaccharide chains in the entry. The first graphic for a chain summarises the proportions of the various outlier classes displayed in the second graphic. The second graphic shows the sequence view annotated by issues in geometry and electron density. Residues are color-coded according to the number of geometric quality criteria for which they contain at least one outlier: green = 0, yellow = 1, orange = 2 and red = 3 or more. A red dot above a residue indicates a poor fit to the electron density ($RSRZ > 2$). Stretches of 2 or more consecutive residues without any outlier are shown as a green connector. Residues present in the sample, but not in the model, are shown in grey.

• Molecule 1: INSULIN

Chain A: 



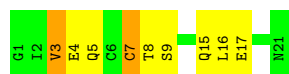
• Molecule 1: INSULIN

Chain C: 




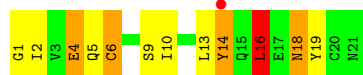
• Molecule 1: INSULIN

Chain E: 

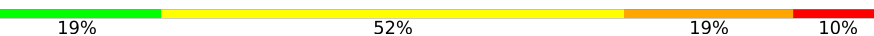


• Molecule 1: INSULIN

Chain G: 



• Molecule 1: INSULIN

Chain I: 

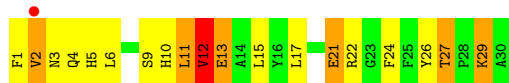


• Molecule 1: INSULIN

Chain K: 



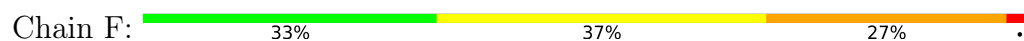
• Molecule 2: INSULIN



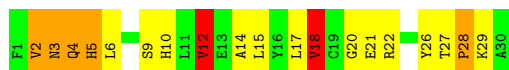
• Molecule 2: INSULIN



• Molecule 2: INSULIN



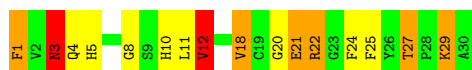
• Molecule 2: INSULIN



• Molecule 2: INSULIN



• Molecule 2: INSULIN



4 Data and refinement statistics

Property	Value	Source
Space group	P 1 21 1	Depositor
Cell constants a, b, c, α , β , γ	49.24Å 60.94Å 48.18Å 90.00° 95.80° 90.00°	Depositor
Resolution (Å)	10.00 – 2.50 10.00 – 2.50	Depositor EDS
% Data completeness (in resolution range)	92.0 (10.00-2.50) 91.0 (10.00-2.50)	Depositor EDS
R_{merge}	0.06	Depositor
R_{sym}	(Not available)	Depositor
$\langle I/\sigma(I) \rangle$ ¹	1.05 (at 2.01Å)	Xtriage
Refinement program	X-PLOR 3.1	Depositor
R, R_{free}	0.206 , (Not available) 0.238 , (Not available)	Depositor DCC
R_{free} test set	No test flags present.	wwPDB-VP
Wilson B-factor (Å ²)	35.0	Xtriage
Anisotropy	0.389	Xtriage
Bulk solvent k_{sol} (e/Å ³), B_{sol} (Å ²)	0.19 , 144.8	EDS
L-test for twinning ²	$\langle L \rangle = 0.47$, $\langle L^2 \rangle = 0.30$	Xtriage
Estimated twinning fraction	0.035 for l,-k,h	Xtriage
F_o, F_c correlation	0.91	EDS
Total number of atoms	2574	wwPDB-VP
Average B, all atoms (Å ²)	26.0	wwPDB-VP

Xtriage's analysis on translational NCS is as follows: *The largest off-origin peak in the Patterson function is 6.96% of the height of the origin peak. No significant pseudotranslation is detected.*

¹Intensities estimated from amplitudes.

²Theoretical values of $\langle |L| \rangle$, $\langle L^2 \rangle$ for acentric reflections are 0.5, 0.333 respectively for untwinned datasets, and 0.375, 0.2 for perfectly twinned datasets.

5 Model quality

5.1 Standard geometry

Bond lengths and bond angles in the following residue types are not validated in this section: ZN, IPH

The Z score for a bond length (or angle) is the number of standard deviations the observed value is removed from the expected value. A bond length (or angle) with $|Z| > 5$ is considered an outlier worth inspection. RMSZ is the root-mean-square of all Z scores of the bond lengths (or angles).

Mol	Chain	Bond lengths		Bond angles	
		RMSZ	# $ Z > 5$	RMSZ	# $ Z > 5$
1	A	1.27	0/164	2.63	16/220 (7.3%)
1	C	1.49	0/164	2.76	18/220 (8.2%)
1	E	1.29	0/164	2.35	11/220 (5.0%)
1	G	1.28	0/164	2.24	5/220 (2.3%)
1	I	1.54	2/164 (1.2%)	2.66	17/220 (7.7%)
1	K	1.12	1/164 (0.6%)	2.28	7/220 (3.2%)
2	B	1.46	3/247 (1.2%)	2.48	14/332 (4.2%)
2	D	1.60	6/247 (2.4%)	2.65	24/332 (7.2%)
2	F	1.71	7/247 (2.8%)	2.67	28/332 (8.4%)
2	H	1.66	5/247 (2.0%)	2.27	13/332 (3.9%)
2	J	1.59	5/247 (2.0%)	2.55	20/332 (6.0%)
2	L	1.47	3/247 (1.2%)	2.31	14/332 (4.2%)
All	All	1.49	32/2466 (1.3%)	2.49	187/3312 (5.6%)

Chiral center outliers are detected by calculating the chiral volume of a chiral center and verifying if the center is modelled as a planar moiety or with the opposite hand. A planarity outlier is detected by checking planarity of atoms in a peptide group, atoms in a mainchain group or atoms of a sidechain that are expected to be planar.

Mol	Chain	#Chirality outliers	#Planarity outliers
1	G	0	2
1	I	0	1
1	K	0	1
2	D	0	1
All	All	0	5

All (32) bond length outliers are listed below:

Mol	Chain	Res	Type	Atoms	Z	Observed(Å)	Ideal(Å)
1	I	2	ILE	CA-CB	8.41	1.65	1.54
2	H	18	VAL	CA-CB	8.30	1.65	1.54

Continued on next page...

Continued from previous page...

Mol	Chain	Res	Type	Atoms	Z	Observed(Å)	Ideal(Å)
2	F	10	HIS	CD2-NE2	-7.95	1.29	1.37
2	H	10	HIS	CD2-NE2	-7.56	1.29	1.37
2	J	5	HIS	CD2-NE2	-7.54	1.29	1.37
2	L	10	HIS	CD2-NE2	-7.52	1.29	1.37
2	F	10	HIS	CG-ND1	-7.05	1.30	1.38
1	K	10	ILE	CA-CB	6.91	1.61	1.54
2	H	5	HIS	CD2-NE2	-6.88	1.30	1.37
2	L	10	HIS	CG-ND1	-6.83	1.30	1.38
2	B	10	HIS	CD2-NE2	-6.74	1.30	1.37
2	D	10	HIS	CD2-NE2	-6.68	1.30	1.37
2	B	10	HIS	CG-ND1	-6.51	1.31	1.38
2	H	10	HIS	CG-ND1	-6.49	1.31	1.38
2	D	10	HIS	ND1-CE1	-6.44	1.26	1.32
2	J	12	VAL	CA-CB	6.39	1.61	1.54
2	B	5	HIS	CD2-NE2	-6.36	1.30	1.37
2	F	13	GLU	CA-CB	6.30	1.63	1.53
2	D	18	VAL	CA-CB	6.20	1.62	1.54
2	F	5	HIS	CD2-NE2	-6.17	1.31	1.37
2	D	27	THR	CA-CB	6.11	1.63	1.53
2	D	10	HIS	CG-ND1	-6.03	1.31	1.38
2	F	10	HIS	CA-CB	-5.95	1.43	1.53
1	I	5	GLN	CA-CB	5.93	1.60	1.53
2	J	10	HIS	CD2-NE2	-5.90	1.31	1.37
2	L	5	HIS	CD2-NE2	-5.88	1.31	1.37
2	F	27	THR	CA-CB	5.72	1.61	1.53
2	J	5	HIS	CG-ND1	-5.61	1.32	1.38
2	J	5	HIS	CA-CB	-5.52	1.46	1.54
2	H	10	HIS	CA-C	-5.26	1.45	1.52
2	D	5	HIS	CD2-NE2	-5.13	1.32	1.37
2	F	5	HIS	CG-ND1	-5.08	1.32	1.38

All (187) bond angle outliers are listed below:

Mol	Chain	Res	Type	Atoms	Z	Observed(°)	Ideal(°)
2	B	2	VAL	N-CA-C	18.77	129.76	110.62
1	A	18	ASN	CA-CB-CG	12.16	124.76	112.60
1	C	3	VAL	CA-C-O	-11.24	109.26	121.17
1	I	14	TYR	N-CA-C	-11.18	98.62	111.03
2	F	3	ASN	CA-CB-CG	10.21	122.81	112.60
1	I	6	CYS	N-CA-C	10.17	125.21	113.01
2	D	3	ASN	OD1-CG-ND2	-9.98	112.61	122.60
1	E	5	GLN	OE1-CD-NE2	-9.96	112.64	122.60

Continued on next page...

Continued from previous page...

Mol	Chain	Res	Type	Atoms	Z	Observed(°)	Ideal(°)
2	D	3	ASN	CA-CB-CG	9.43	122.03	112.60
2	J	15	LEU	N-CA-C	-9.37	100.95	111.82
2	J	13	GLU	CA-CB-CG	9.26	132.62	114.10
2	L	3	ASN	CA-CB-CG	9.21	121.81	112.60
1	C	2	ILE	CB-CA-C	-9.01	100.24	112.04
2	H	10	HIS	CA-C-O	-9.01	108.88	119.78
2	F	28	PRO	N-CA-C	8.77	130.54	112.47
2	F	12	VAL	N-CA-CB	-8.71	97.51	110.58
2	D	5	HIS	CA-CB-CG	-8.57	105.23	113.80
1	K	14	TYR	CA-CB-CG	8.45	129.10	113.90
2	F	29	LYS	O-C-N	8.44	132.91	123.04
1	C	18	ASN	N-CA-C	-8.38	101.72	111.03
1	A	11	CYS	CA-C-O	8.36	130.07	120.80
1	A	8	THR	N-CA-C	-8.29	103.29	113.41
1	K	21	ASN	CA-CB-CG	8.26	120.86	112.60
2	H	28	PRO	N-CA-C	8.22	124.06	114.20
2	L	22	ARG	O-C-N	-8.01	112.87	122.96
2	J	3	ASN	N-CA-C	7.99	120.70	111.11
2	J	6	LEU	N-CA-C	-7.90	103.86	113.97
2	J	22	ARG	CA-C-O	-7.85	112.81	120.90
2	F	13	GLU	CA-CB-CG	7.64	129.39	114.10
1	E	8	THR	CA-CB-OG1	-7.61	98.18	109.60
2	J	25	PHE	CA-CB-CG	7.59	121.39	113.80
1	E	9	SER	N-CA-C	-7.59	97.86	109.85
1	C	15	GLN	OE1-CD-NE2	-7.56	115.04	122.60
1	G	5	GLN	OE1-CD-NE2	-7.46	115.14	122.60
1	I	21	ASN	OD1-CG-ND2	-7.33	115.27	122.60
2	B	21	GLU	N-CA-C	7.33	120.19	111.33
2	D	4	GLN	CA-CB-CG	7.30	128.70	114.10
2	F	10	HIS	CA-CB-CG	-7.27	106.53	113.80
1	C	18	ASN	CA-CB-CG	7.23	119.83	112.60
1	C	11	CYS	CA-C-O	7.16	129.25	121.16
2	F	12	VAL	CB-CA-C	7.12	122.05	112.22
2	F	19	CYS	N-CA-C	7.11	122.22	112.90
2	L	24	PHE	CA-CB-CG	7.11	120.91	113.80
2	F	12	VAL	CA-C-N	7.09	130.64	120.79
2	F	12	VAL	C-N-CA	7.09	130.64	120.79
1	C	3	VAL	O-C-N	-6.94	115.11	121.91
2	B	3	ASN	CB-CG-ND2	6.93	126.79	116.40
2	D	3	ASN	CA-C-N	6.90	130.46	120.38
2	D	3	ASN	C-N-CA	6.90	130.46	120.38
1	C	21	ASN	OD1-CG-ND2	-6.87	115.73	122.60

Continued on next page...

Continued from previous page...

Mol	Chain	Res	Type	Atoms	Z	Observed(°)	Ideal(°)
2	L	12	VAL	N-CA-CB	-6.86	98.92	110.65
1	A	2	ILE	N-CA-CB	-6.76	102.53	110.64
1	A	10	ILE	N-CA-C	6.71	117.70	108.84
1	A	15	GLN	CA-C-O	-6.71	112.80	120.24
2	L	3	ASN	OD1-CG-ND2	-6.71	115.89	122.60
1	I	3	VAL	N-CA-C	6.69	123.26	109.34
1	C	20	CYS	N-CA-C	-6.68	99.58	108.19
2	B	24	PHE	CA-CB-CG	6.62	120.42	113.80
2	D	6	LEU	CA-C-N	6.50	129.32	120.54
2	D	6	LEU	C-N-CA	6.50	129.32	120.54
2	F	15	LEU	N-CA-C	-6.49	104.28	111.36
2	L	4	GLN	OE1-CD-NE2	-6.46	116.14	122.60
2	B	9	SER	CA-CB-OG	6.46	124.01	111.10
2	J	17	LEU	CA-C-O	-6.44	113.59	120.42
1	E	8	THR	CA-CB-CG2	6.40	121.38	110.50
2	F	14	ALA	N-CA-C	6.38	118.24	111.28
2	F	13	GLU	CA-C-N	6.35	128.79	120.28
2	F	13	GLU	C-N-CA	6.35	128.79	120.28
2	D	13	GLU	CA-CB-CG	6.33	126.76	114.10
2	H	21	GLU	CA-CB-CG	6.32	126.73	114.10
2	H	10	HIS	N-CA-C	-6.31	105.23	113.12
2	L	21	GLU	CA-C-N	6.30	132.44	122.36
2	L	21	GLU	C-N-CA	6.30	132.44	122.36
2	H	12	VAL	N-CA-CB	-6.29	100.67	110.54
1	C	17	GLU	N-CA-C	6.25	120.38	112.87
2	J	3	ASN	O-C-N	-6.23	115.61	122.09
1	C	3	VAL	CB-CA-C	6.23	119.94	111.97
2	J	13	GLU	N-CA-C	-6.22	104.55	111.71
1	A	15	GLN	N-CA-C	-6.20	104.06	111.69
2	L	1	PHE	CA-CB-CG	6.20	120.00	113.80
1	E	5	GLN	CA-CB-CG	6.19	126.48	114.10
1	A	19	TYR	N-CA-C	-6.15	103.13	111.55
2	D	3	ASN	CB-CG-ND2	6.12	125.58	116.40
1	C	15	GLN	CG-CD-NE2	6.12	125.57	116.40
1	I	2	ILE	CA-C-N	6.08	132.91	121.97
1	I	2	ILE	C-N-CA	6.08	132.91	121.97
1	I	2	ILE	N-CA-C	-6.04	96.78	109.34
1	K	21	ASN	OD1-CG-ND2	-6.03	116.57	122.60
2	D	25	PHE	CA-CB-CG	6.03	119.83	113.80
1	A	17	GLU	N-CA-C	-6.03	105.78	113.01
2	H	3	ASN	CA-CB-CG	5.96	118.56	112.60
2	J	5	HIS	CB-CG-CD2	-5.93	123.49	131.20

Continued on next page...

Continued from previous page...

Mol	Chain	Res	Type	Atoms	Z	Observed(°)	Ideal(°)
2	D	17	LEU	N-CA-CB	5.93	119.22	110.33
2	B	29	LYS	CB-CG-CD	5.91	124.89	111.30
2	D	18	VAL	CG1-CB-CG2	-5.91	97.80	110.80
1	E	4	GLU	CB-CG-CD	5.90	122.63	112.60
2	J	10	HIS	CB-CG-CD2	-5.89	123.54	131.20
2	D	6	LEU	CD1-CG-CD2	-5.88	97.86	110.80
1	I	5	GLN	OE1-CD-NE2	-5.88	116.72	122.60
2	D	9	SER	N-CA-CB	-5.88	101.17	110.22
2	B	4	GLN	CA-CB-CG	5.88	125.85	114.10
2	F	27	THR	CA-C-N	5.87	127.18	119.84
2	F	27	THR	C-N-CA	5.87	127.18	119.84
1	I	2	ILE	O-C-N	-5.86	115.24	122.57
1	C	5	GLN	OE1-CD-NE2	-5.80	116.80	122.60
1	C	19	TYR	O-C-N	5.78	129.08	122.55
1	E	7	CYS	CA-C-O	5.76	126.25	119.28
2	D	5	HIS	CB-CG-CD2	-5.76	123.71	131.20
1	E	8	THR	N-CA-CB	-5.76	99.96	110.27
2	J	5	HIS	CA-C-O	5.75	125.22	118.90
1	A	11	CYS	O-C-N	5.74	129.91	123.19
2	F	10	HIS	CB-CG-CD2	-5.73	123.75	131.20
1	E	5	GLN	N-CA-C	5.71	119.43	112.23
2	J	25	PHE	O-C-N	-5.70	115.59	123.12
2	L	22	ARG	CA-C-O	-5.69	115.14	121.51
2	L	5	HIS	CB-CG-CD2	-5.68	123.82	131.20
1	I	9	SER	N-CA-C	-5.67	101.78	109.95
2	L	29	LYS	O-C-N	5.66	130.21	122.41
1	I	21	ASN	CB-CG-ND2	5.65	124.88	116.40
2	J	11	LEU	O-C-N	-5.65	116.25	122.07
2	D	22	ARG	N-CA-C	-5.63	105.15	111.28
2	F	7	CYS	O-C-N	-5.60	116.21	122.03
2	F	24	PHE	O-C-N	-5.60	116.28	122.72
1	K	3	VAL	O-C-N	-5.60	116.06	121.83
2	D	17	LEU	CB-CA-C	-5.57	98.48	109.67
2	H	21	GLU	CB-CG-CD	5.57	122.06	112.60
2	D	24	PHE	CA-CB-CG	5.56	119.36	113.80
2	F	18	VAL	CA-C-O	-5.55	115.18	120.95
2	B	2	VAL	N-CA-CB	-5.55	103.00	110.54
1	G	14	TYR	CA-CB-CG	-5.54	103.93	113.90
2	D	1	PHE	CA-CB-CG	5.49	119.29	113.80
1	I	3	VAL	CA-C-O	5.49	127.64	120.78
2	B	12	VAL	CA-CB-CG2	-5.47	101.10	110.40
2	F	9	SER	N-CA-C	-5.46	104.98	111.69

Continued on next page...

Continued from previous page...

Mol	Chain	Res	Type	Atoms	Z	Observed(°)	Ideal(°)
1	A	21	ASN	CA-CB-CG	5.45	118.05	112.60
2	F	10	HIS	CB-CA-C	-5.45	101.58	110.85
2	H	27	THR	CA-C-N	5.44	126.16	120.12
2	H	27	THR	C-N-CA	5.44	126.16	120.12
2	J	10	HIS	CB-CG-ND1	5.44	130.86	122.70
2	J	9	SER	N-CA-C	-5.44	105.38	112.23
1	C	4	GLU	O-C-N	-5.44	115.14	122.43
1	E	17	GLU	CA-CB-CG	5.43	124.97	114.10
2	D	10	HIS	CB-CG-CD2	-5.43	124.14	131.20
1	A	3	VAL	CA-C-O	-5.42	115.11	120.85
1	K	5	GLN	N-CA-C	-5.41	99.28	110.80
1	G	18	ASN	OD1-CG-ND2	-5.39	117.20	122.60
2	J	11	LEU	N-CA-C	5.38	116.83	111.07
2	F	29	LYS	CB-CG-CD	5.38	123.68	111.30
1	I	19	TYR	CA-C-O	5.38	125.20	119.34
2	D	17	LEU	O-C-N	5.35	129.96	122.36
2	B	3	ASN	OD1-CG-ND2	-5.34	117.26	122.60
2	H	29	LYS	N-CA-C	-5.33	97.57	107.71
1	E	15	GLN	CA-CB-CG	-5.30	103.50	114.10
2	F	14	ALA	O-C-N	-5.30	116.50	122.12
1	K	18	ASN	CB-CG-ND2	5.29	124.34	116.40
1	A	4	GLU	CA-C-O	-5.29	115.45	120.90
2	B	13	GLU	N-CA-C	-5.26	105.22	111.69
2	B	4	GLN	OE1-CD-NE2	-5.25	117.35	122.60
1	I	18	ASN	OD1-CG-ND2	-5.25	117.35	122.60
2	J	8	GLY	O-C-N	-5.24	116.76	122.84
2	D	4	GLN	OE1-CD-NE2	-5.23	117.37	122.60
1	G	16	LEU	CA-C-O	5.22	125.96	120.42
2	F	27	THR	N-CA-CB	-5.21	104.63	111.09
2	H	10	HIS	CB-CG-CD2	-5.20	124.44	131.20
2	D	10	HIS	CB-CG-ND1	5.19	130.49	122.70
1	K	3	VAL	CA-C-O	-5.19	115.35	120.85
2	H	20	GLY	O-C-N	-5.18	115.96	122.70
2	F	5	HIS	CB-CG-CD2	-5.16	124.49	131.20
1	A	2	ILE	CB-CA-C	5.15	118.74	111.94
1	I	8	THR	N-CA-C	-5.15	104.62	112.04
1	A	4	GLU	CA-CB-CG	5.14	124.39	114.10
2	F	21	GLU	N-CA-C	5.14	116.88	111.28
1	C	2	ILE	N-CA-CB	5.14	116.89	110.47
2	L	27	THR	CA-C-N	5.13	124.63	119.19
2	L	27	THR	C-N-CA	5.13	124.63	119.19
2	B	27	THR	O-C-N	-5.11	116.48	121.38

Continued on next page...

Continued from previous page...

Mol	Chain	Res	Type	Atoms	Z	Observed(°)	Ideal(°)
2	B	4	GLN	CG-CD-OE1	5.09	130.99	120.80
1	C	3	VAL	N-CA-C	-5.09	105.54	110.42
2	J	5	HIS	N-CA-C	-5.07	107.07	114.12
2	F	13	GLU	CB-CG-CD	5.07	121.21	112.60
1	I	5	GLN	CB-CG-CD	5.05	121.19	112.60
1	I	10	ILE	N-CA-C	-5.05	104.54	110.05
1	C	4	GLU	CB-CG-CD	5.05	121.18	112.60
1	A	17	GLU	N-CA-CB	-5.04	101.56	110.39
1	G	6	CYS	O-C-N	-5.03	116.25	122.19
2	H	22	ARG	CB-CG-CD	-5.03	99.73	111.30
2	J	12	VAL	N-CA-CB	-5.02	104.68	110.55

There are no chirality outliers.

All (5) planarity outliers are listed below:

Mol	Chain	Res	Type	Group
2	D	27	THR	Peptide
1	G	14	TYR	Sidechain
1	G	19	TYR	Sidechain
1	I	2	ILE	Mainchain
1	K	14	TYR	Sidechain

5.2 Too-close contacts

In the following table, the Non-H and H(model) columns list the number of non-hydrogen atoms and hydrogen atoms in the chain respectively. The H(added) column lists the number of hydrogen atoms added and optimized by MolProbity. The Clashes column lists the number of clashes within the asymmetric unit, whereas Symm-Clashes lists symmetry-related clashes.

Mol	Chain	Non-H	H(model)	H(added)	Clashes	Symm-Clashes
1	A	163	0	149	14	0
1	C	163	0	149	7	0
1	E	163	0	149	3	0
1	G	163	0	149	9	0
1	I	163	0	149	10	0
1	K	163	0	149	4	0
2	B	240	0	230	8	0
2	D	240	0	230	9	0
2	F	240	0	230	10	0
2	H	240	0	230	9	0
2	J	240	0	230	15	0

Continued on next page...

Continued from previous page...

Mol	Chain	Non-H	H(model)	H(added)	Clashes	Symm-Clashes
2	L	240	0	230	4	0
3	A	7	0	6	1	0
3	C	7	0	6	0	0
3	F	7	0	6	2	0
3	G	7	0	6	0	0
3	H	7	0	6	0	0
3	J	7	0	6	2	0
4	B	1	0	0	0	0
4	D	1	0	0	0	0
5	A	12	0	0	0	0
5	B	8	0	0	1	0
5	C	9	0	0	0	0
5	D	10	0	0	1	0
5	E	9	0	0	0	0
5	F	15	0	0	0	0
5	G	6	0	0	0	0
5	H	13	0	0	0	0
5	I	8	0	0	0	0
5	J	10	0	0	1	0
5	K	6	0	0	0	0
5	L	6	0	0	1	0
All	All	2574	0	2310	73	0

The all-atom clashscore is defined as the number of clashes found per 1000 atoms (including hydrogen atoms). The all-atom clashscore for this structure is 16.

All (73) close contacts within the same asymmetric unit are listed below, sorted by their clash magnitude.

Atom-1	Atom-2	Interatomic distance (Å)	Clash overlap (Å)
2:F:10:HIS:HB3	3:F:31:IPH:H4	1.60	0.84
2:J:11:LEU:HA	3:J:31:IPH:H5	1.59	0.83
1:A:2:ILE:HG21	2:B:26:TYR:CE1	2.16	0.80
1:G:2:ILE:HD11	2:H:15:LEU:HD11	1.68	0.75
1:E:3:VAL:HG21	2:F:29:LYS:HB2	1.76	0.68
2:J:20:GLY:HA2	5:J:39:HOH:O	1.94	0.66
2:D:6:LEU:HD23	5:L:119:HOH:O	1.94	0.66
1:G:1:GLY:H2	1:G:4:GLU:HG3	1.61	0.66
1:I:2:ILE:HG23	1:I:3:VAL:H	1.61	0.65
2:J:21:GLU:HB2	2:L:29:LYS:HE2	1.78	0.65
2:B:12:VAL:HG13	2:D:12:VAL:HG12	1.78	0.64
1:K:16:LEU:O	1:K:19:TYR:HB2	2.00	0.61

Continued on next page...

Continued from previous page...

Atom-1	Atom-2	Interatomic distance (Å)	Clash overlap (Å)
1:I:12:SER:HB3	1:I:14:TYR:CD1	2.36	0.61
2:B:1:PHE:HD2	1:I:10:ILE:HG23	1.65	0.60
1:C:3:VAL:HG11	2:D:29:LYS:HA	1.84	0.60
2:B:17:LEU:HG	1:G:13:LEU:HD21	1.83	0.60
1:A:2:ILE:HG21	2:B:26:TYR:HE1	1.65	0.59
2:H:5:HIS:HD2	2:H:6:LEU:HD12	1.68	0.58
2:F:12:VAL:HG13	2:H:12:VAL:HG13	1.84	0.58
2:J:11:LEU:HA	3:J:31:IPH:C5	2.33	0.57
1:A:2:ILE:HG22	1:A:3:VAL:N	2.19	0.57
2:J:27:THR:HG23	2:J:30:ALA:H	1.70	0.57
1:I:12:SER:HB3	1:I:14:TYR:HD1	1.70	0.56
1:A:2:ILE:CG2	1:A:3:VAL:N	2.70	0.55
1:C:13:LEU:HD21	2:J:18:VAL:HG12	1.89	0.55
1:G:2:ILE:O	1:G:6:CYS:HB2	2.07	0.55
2:L:8:GLY:O	2:L:12:VAL:HB	2.06	0.55
1:G:13:LEU:HD22	2:H:18:VAL:HG12	1.92	0.50
5:B:38:HOH:O	2:J:6:LEU:HD23	2.11	0.50
5:D:40:HOH:O	1:G:10:ILE:HD13	2.10	0.49
1:A:2:ILE:HG23	2:B:11:LEU:CD1	2.43	0.49
2:H:4:GLN:HA	2:H:4:GLN:HE21	1.78	0.49
2:D:25:PHE:CE2	2:D:27:THR:HB	2.48	0.48
2:H:14:ALA:O	2:H:18:VAL:HG13	2.13	0.48
1:C:19:TYR:HD2	2:D:27:THR:HG21	1.78	0.48
1:E:7:CYS:O	2:J:1:PHE:HA	2.14	0.47
2:F:3:ASN:O	2:J:1:PHE:HZ	1.97	0.47
1:I:2:ILE:HD11	2:J:11:LEU:CD2	2.45	0.47
2:D:1:PHE:O	1:G:10:ILE:HG13	2.14	0.47
1:I:2:ILE:HD13	1:I:2:ILE:HG21	1.64	0.47
2:J:13:GLU:O	2:J:17:LEU:HD13	2.15	0.47
1:K:16:LEU:HB3	2:L:18:VAL:HG11	1.97	0.47
1:A:10:ILE:HG12	2:F:2:VAL:HG23	1.97	0.46
1:C:3:VAL:O	1:C:7:CYS:HB2	2.16	0.46
1:A:2:ILE:HG23	2:B:11:LEU:HD13	1.97	0.46
1:I:13:LEU:HD12	1:I:13:LEU:H	1.81	0.45
1:A:7:CYS:O	2:F:2:VAL:HG11	2.15	0.45
2:H:26:TYR:CD2	2:H:28:PRO:HD3	2.52	0.44
1:A:19:TYR:HB2	2:B:15:LEU:HD21	2.00	0.44
1:I:19:TYR:HB2	2:J:15:LEU:HD21	2.00	0.44
2:F:2:VAL:O	2:F:6:LEU:HB2	2.18	0.44
1:A:11:CYS:O	3:A:22:IPH:H6	2.18	0.43
1:A:19:TYR:N	1:A:19:TYR:CD1	2.86	0.43

Continued on next page...

Continued from previous page...

Atom-1	Atom-2	Interatomic distance (Å)	Clash overlap (Å)
1:G:13:LEU:HA	1:G:16:LEU:HB2	2.00	0.43
1:G:1:GLY:N	1:G:4:GLU:HG3	2.32	0.43
1:C:3:VAL:CG1	2:D:29:LYS:HA	2.48	0.43
1:K:3:VAL:HG23	1:K:7:CYS:SG	2.59	0.43
1:K:11:CYS:HA	1:K:15:GLN:NE2	2.34	0.43
1:A:19:TYR:N	1:A:19:TYR:HD1	2.17	0.42
2:D:25:PHE:CD2	2:D:27:THR:HB	2.54	0.42
2:L:3:ASN:HD22	2:L:3:ASN:H	1.67	0.42
2:D:15:LEU:O	2:D:19:CYS:HB2	2.20	0.42
1:E:16:LEU:HA	1:E:16:LEU:HD23	1.83	0.42
2:F:14:ALA:HB2	3:F:31:IPH:H3	2.02	0.42
1:I:13:LEU:HD23	2:J:18:VAL:HG11	2.00	0.42
1:C:3:VAL:HA	1:C:7:CYS:SG	2.59	0.41
1:C:13:LEU:CD2	2:J:18:VAL:HG12	2.50	0.41
1:A:2:ILE:HG22	1:A:3:VAL:H	1.83	0.41
2:F:23:GLY:HA3	2:H:26:TYR:O	2.20	0.41
1:A:10:ILE:HD13	2:F:5:HIS:HB2	2.03	0.41
1:I:1:GLY:O	1:I:19:TYR:CE1	2.73	0.41
2:J:8:GLY:HA2	2:J:11:LEU:CB	2.51	0.40
2:H:2:VAL:HG13	2:H:6:LEU:HD13	2.04	0.40

There are no symmetry-related clashes.

5.3 Torsion angles [i](#)

5.3.1 Protein backbone [i](#)

In the following table, the Percentiles column shows the percent Ramachandran outliers of the chain as a percentile score with respect to all X-ray entries followed by that with respect to entries of similar resolution.

The Analysed column shows the number of residues for which the backbone conformation was analysed, and the total number of residues.

Mol	Chain	Analysed	Favoured	Allowed	Outliers	Percentiles	
1	A	19/21 (90%)	16 (84%)	3 (16%)	0	100	100
1	C	19/21 (90%)	16 (84%)	3 (16%)	0	100	100
1	E	19/21 (90%)	19 (100%)	0	0	100	100
1	G	19/21 (90%)	16 (84%)	3 (16%)	0	100	100

Continued on next page...

Continued from previous page...

Mol	Chain	Analysed	Favoured	Allowed	Outliers	Percentiles	
1	I	19/21 (90%)	14 (74%)	2 (10%)	3 (16%)	0	0
1	K	19/21 (90%)	16 (84%)	3 (16%)	0	100	100
2	B	28/30 (93%)	26 (93%)	1 (4%)	1 (4%)	2	3
2	D	28/30 (93%)	25 (89%)	2 (7%)	1 (4%)	2	3
2	F	28/30 (93%)	25 (89%)	2 (7%)	1 (4%)	2	3
2	H	28/30 (93%)	25 (89%)	3 (11%)	0	100	100
2	J	28/30 (93%)	25 (89%)	2 (7%)	1 (4%)	2	3
2	L	28/30 (93%)	27 (96%)	0	1 (4%)	2	3
All	All	282/306 (92%)	250 (89%)	24 (8%)	8 (3%)	4	6

All (8) Ramachandran outliers are listed below:

Mol	Chain	Res	Type
2	B	29	LYS
1	I	2	ILE
1	I	3	VAL
2	F	28	PRO
2	L	20	GLY
2	D	28	PRO
1	I	20	CYS
2	J	2	VAL

5.3.2 Protein sidechains ⓘ

In the following table, the Percentiles column shows the percent sidechain outliers of the chain as a percentile score with respect to all X-ray entries followed by that with respect to entries of similar resolution.

The Analysed column shows the number of residues for which the sidechain conformation was analysed, and the total number of residues.

Mol	Chain	Analysed	Rotameric	Outliers	Percentiles	
1	A	20/20 (100%)	13 (65%)	7 (35%)	0	0
1	C	20/20 (100%)	12 (60%)	8 (40%)	0	0
1	E	20/20 (100%)	19 (95%)	1 (5%)	22	44
1	G	20/20 (100%)	16 (80%)	4 (20%)	1	2
1	I	20/20 (100%)	16 (80%)	4 (20%)	1	2

Continued on next page...

Continued from previous page...

Mol	Chain	Analysed	Rotameric	Outliers	Percentiles	
1	K	20/20 (100%)	13 (65%)	7 (35%)	0	0
2	B	25/25 (100%)	17 (68%)	8 (32%)	0	0
2	D	25/25 (100%)	20 (80%)	5 (20%)	1	2
2	F	25/25 (100%)	21 (84%)	4 (16%)	2	5
2	H	25/25 (100%)	18 (72%)	7 (28%)	0	1
2	J	25/25 (100%)	20 (80%)	5 (20%)	1	2
2	L	25/25 (100%)	16 (64%)	9 (36%)	0	0
All	All	270/270 (100%)	201 (74%)	69 (26%)	0	1

All (69) residues with a non-rotameric sidechain are listed below:

Mol	Chain	Res	Type
1	A	2	ILE
1	A	5	GLN
1	A	13	LEU
1	A	16	LEU
1	A	18	ASN
1	A	19	TYR
1	A	21	ASN
2	B	2	VAL
2	B	6	LEU
2	B	11	LEU
2	B	12	VAL
2	B	13	GLU
2	B	21	GLU
2	B	22	ARG
2	B	27	THR
1	C	2	ILE
1	C	3	VAL
1	C	5	GLN
1	C	15	GLN
1	C	16	LEU
1	C	17	GLU
1	C	19	TYR
1	C	21	ASN
2	D	2	VAL
2	D	18	VAL
2	D	21	GLU
2	D	25	PHE
2	D	29	LYS

Continued on next page...

Continued from previous page...

Mol	Chain	Res	Type
1	E	3	VAL
2	F	6	LEU
2	F	12	VAL
2	F	13	GLU
2	F	17	LEU
1	G	4	GLU
1	G	9	SER
1	G	16	LEU
1	G	18	ASN
2	H	2	VAL
2	H	3	ASN
2	H	4	GLN
2	H	9	SER
2	H	12	VAL
2	H	17	LEU
2	H	18	VAL
1	I	3	VAL
1	I	4	GLU
1	I	5	GLN
1	I	16	LEU
2	J	6	LEU
2	J	11	LEU
2	J	12	VAL
2	J	22	ARG
2	J	29	LYS
1	K	4	GLU
1	K	5	GLN
1	K	8	THR
1	K	9	SER
1	K	13	LEU
1	K	14	TYR
1	K	15	GLN
2	L	1	PHE
2	L	3	ASN
2	L	11	LEU
2	L	12	VAL
2	L	18	VAL
2	L	21	GLU
2	L	22	ARG
2	L	25	PHE
2	L	27	THR

Sometimes sidechains can be flipped to improve hydrogen bonding and reduce clashes. All (13)

such sidechains are listed below:

Mol	Chain	Res	Type
2	B	10	HIS
1	C	15	GLN
1	C	21	ASN
2	D	10	HIS
1	E	5	GLN
2	F	10	HIS
2	H	3	ASN
2	H	4	GLN
2	H	10	HIS
2	J	5	HIS
1	K	15	GLN
2	L	3	ASN
2	L	5	HIS

5.3.3 RNA [i](#)

There are no RNA molecules in this entry.

5.4 Non-standard residues in protein, DNA, RNA chains [i](#)

There are no non-standard protein/DNA/RNA residues in this entry.

5.5 Carbohydrates [i](#)

There are no oligosaccharides in this entry.

5.6 Ligand geometry [i](#)

Of 8 ligands modelled in this entry, 2 are monoatomic - leaving 6 for Mogul analysis.

In the following table, the Counts columns list the number of bonds (or angles) for which Mogul statistics could be retrieved, the number of bonds (or angles) that are observed in the model and the number of bonds (or angles) that are defined in the Chemical Component Dictionary. The Link column lists molecule types, if any, to which the group is linked. The Z score for a bond length (or angle) is the number of standard deviations the observed value is removed from the expected value. A bond length (or angle) with $|Z| > 2$ is considered an outlier worth inspection. RMSZ is the root-mean-square of all Z scores of the bond lengths (or angles).

Mol	Type	Chain	Res	Link	Bond lengths			Bond angles		
					Counts	RMSZ	# Z > 2	Counts	RMSZ	# Z > 2
3	IPH	H	31	-	7,7,7	0.65	0	8,8,8	0.47	0
3	IPH	C	22	-	7,7,7	0.49	0	8,8,8	0.68	0
3	IPH	G	22	-	7,7,7	0.72	0	8,8,8	1.20	1 (12%)
3	IPH	J	31	-	7,7,7	1.15	1 (14%)	8,8,8	1.38	2 (25%)
3	IPH	A	22	-	7,7,7	0.57	0	8,8,8	0.91	0
3	IPH	F	31	-	7,7,7	0.52	0	8,8,8	1.10	1 (12%)

In the following table, the Chirals column lists the number of chiral outliers, the number of chiral centers analysed, the number of these observed in the model and the number defined in the Chemical Component Dictionary. Similar counts are reported in the Torsion and Rings columns. '-' means no outliers of that kind were identified.

Mol	Type	Chain	Res	Link	Chirals	Torsions	Rings
3	IPH	H	31	-	-	-	0/1/1/1
3	IPH	C	22	-	-	-	0/1/1/1
3	IPH	G	22	-	-	-	0/1/1/1
3	IPH	J	31	-	-	-	0/1/1/1
3	IPH	A	22	-	-	-	0/1/1/1
3	IPH	F	31	-	-	-	0/1/1/1

All (1) bond length outliers are listed below:

Mol	Chain	Res	Type	Atoms	Z	Observed(Å)	Ideal(Å)
3	J	31	IPH	C6-C1	-2.34	1.34	1.39

All (4) bond angle outliers are listed below:

Mol	Chain	Res	Type	Atoms	Z	Observed(°)	Ideal(°)
3	J	31	IPH	C4-C3-C2	-2.68	116.94	120.24
3	J	31	IPH	C3-C2-C1	2.23	122.30	119.29
3	G	22	IPH	C4-C3-C2	-2.08	117.68	120.24
3	F	31	IPH	C5-C4-C3	2.01	122.62	119.87

There are no chirality outliers.

There are no torsion outliers.

There are no ring outliers.

3 monomers are involved in 5 short contacts:

Mol	Chain	Res	Type	Clashes	Symm-Clashes
3	J	31	IPH	2	0

Continued on next page...

Continued from previous page...

Mol	Chain	Res	Type	Clashes	Symm-Clashes
3	A	22	IPH	1	0
3	F	31	IPH	2	0

5.7 Other polymers [i](#)

There are no such residues in this entry.

5.8 Polymer linkage issues [i](#)

There are no chain breaks in this entry.

6 Fit of model and data ⓘ

6.1 Protein, DNA and RNA chains ⓘ

In the following table, the column labelled ‘#RSRZ> 2’ contains the number (and percentage) of RSRZ outliers, followed by percent RSRZ outliers for the chain as percentile scores relative to all X-ray entries and entries of similar resolution. The OWAB column contains the minimum, median, 95th percentile and maximum values of the occupancy-weighted average B-factor per residue. The column labelled ‘Q< 0.9’ lists the number of (and percentage) of residues with an average occupancy less than 0.9.

Mol	Chain	Analysed	<RSRZ>	#RSRZ>2	OWAB(Å ²)	Q<0.9
1	A	21/21 (100%)	0.11	0 100 100	16, 27, 37, 41	0
1	C	21/21 (100%)	0.40	1 (4%) 35 31	16, 28, 36, 39	0
1	E	21/21 (100%)	-0.17	0 100 100	15, 24, 31, 36	0
1	G	21/21 (100%)	0.11	1 (4%) 35 31	17, 27, 32, 36	0
1	I	21/21 (100%)	0.46	0 100 100	14, 30, 39, 41	0
1	K	21/21 (100%)	0.25	0 100 100	18, 28, 34, 38	0
2	B	30/30 (100%)	-0.11	1 (3%) 49 45	11, 20, 34, 37	0
2	D	30/30 (100%)	0.24	1 (3%) 49 45	13, 22, 40, 43	0
2	F	30/30 (100%)	-0.03	0 100 100	11, 18, 33, 40	0
2	H	30/30 (100%)	0.00	0 100 100	12, 23, 41, 41	0
2	J	30/30 (100%)	0.45	1 (3%) 49 45	13, 25, 39, 46	0
2	L	30/30 (100%)	0.17	0 100 100	11, 25, 35, 43	0
All	All	306/306 (100%)	0.15	5 (1%) 70 67	11, 26, 39, 46	0

All (5) RSRZ outliers are listed below:

Mol	Chain	Res	Type	RSRZ
2	D	30	ALA	3.6
2	J	30	ALA	2.5
2	B	2	VAL	2.3
1	C	1	GLY	2.2
1	G	14	TYR	2.1

6.2 Non-standard residues in protein, DNA, RNA chains ⓘ

There are no non-standard protein/DNA/RNA residues in this entry.

6.3 Carbohydrates [i](#)

There are no oligosaccharides in this entry.

6.4 Ligands [i](#)

In the following table, the Atoms column lists the number of modelled atoms in the group and the number defined in the chemical component dictionary. The B-factors column lists the minimum, median, 95th percentile and maximum values of B factors of atoms in the group. The column labelled 'Q< 0.9' lists the number of atoms with occupancy less than 0.9.

Mol	Type	Chain	Res	Atoms	RSCC	RSR	B-factors(\AA^2)	Q<0.9
4	ZN	B	31	1/1	0.37	0.21	27,27,27,27	0
4	ZN	D	31	1/1	0.60	0.52	29,29,29,29	0
3	IPH	F	31	7/7	0.75	0.09	23,27,27,28	0
3	IPH	H	31	7/7	0.79	0.10	34,36,39,40	0
3	IPH	J	31	7/7	0.79	0.12	27,34,35,36	0
3	IPH	C	22	7/7	0.80	0.10	12,20,24,25	0
3	IPH	G	22	7/7	0.81	0.14	28,34,39,40	0
3	IPH	A	22	7/7	0.92	0.08	14,17,19,23	0

6.5 Other polymers [i](#)

There are no such residues in this entry.