



Full wwPDB X-ray Structure Validation Report ⓘ

Mar 5, 2026 – 08:02 AM UTC

PDB ID : 2GD0 / pdb_00002gd0
Title : The 1,1-proton transfer reaction mechanism by alpha-methylacyl-CoA race-
mase is catalyzed by an aspartate/histidine pair and involves a smooth,
methionine-rich surface for binding the fatty acyl moiety
Authors : Bhaumik, P.; Wierenga, R.K.
Deposited on : 2006-03-15
Resolution : 1.70 Å(reported)

This is a Full wwPDB X-ray Structure Validation Report for a publicly released PDB entry.

We welcome your comments at validation@mail.wwpdb.org

A user guide is available at

<https://www.wwpdb.org/validation/2017/XrayValidationReportHelp>

with specific help available everywhere you see the ⓘ symbol.

The types of validation reports are described at

<http://www.wwpdb.org/validation/2017/FAQs#types>.

The following versions of software and data (see [references ⓘ](#)) were used in the production of this report:

MolProbity	:	4-5-2 with Phenix2.0
Mogul	:	2022.3.0, CSD as543be (2022)
Xtriage (Phenix)	:	2.0
EDS	:	3.0
Buster-report	:	wwPDB partial adaption of 1.1.7 (2018)
Percentile statistics	:	20250101.v01 (using entries in the PDB archive January 1st 2025)
CCP4	:	9.0.010 (Gargrove)
Density-Fitness	:	1.0.12
Ideal geometry (proteins)	:	Engh & Huber (2001)
Ideal geometry (DNA, RNA)	:	Parkinson et al. (1996)
Validation Pipeline (wwPDB-VP)	:	2.49

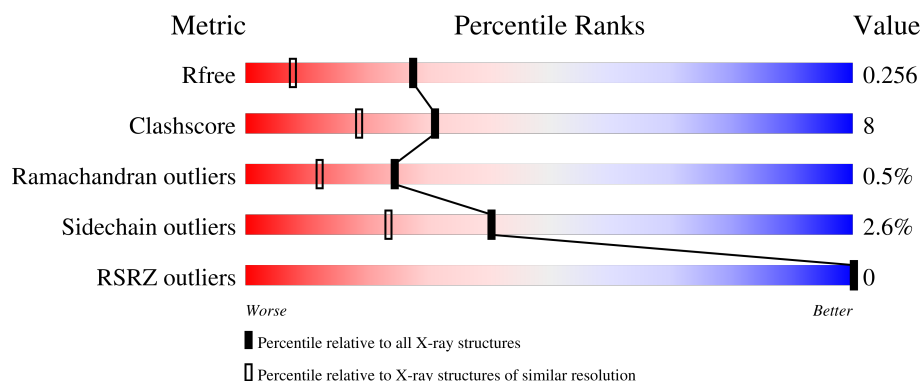
1 Overall quality at a glance

The following experimental techniques were used to determine the structure:

X-RAY DIFFRACTION




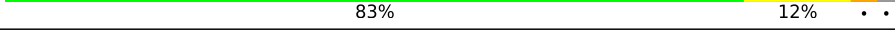
The reported resolution of this entry is 1.70 Å.

Percentile scores (ranging between 0-100) for global validation metrics of the entry are shown in the following graphic. The table shows the number of entries on which the scores are based.



Metric	Whole archive (#Entries)	Similar resolution (#Entries, resolution range(Å))
R_{free}	180053	5551 (1.70-1.70)
Clashscore	190562	5924 (1.70-1.70)
Ramachandran outliers	187476	5846 (1.70-1.70)
Sidechain outliers	187428	5846 (1.70-1.70)
RSRZ outliers	180081	5554 (1.70-1.70)

The table below summarises the geometric issues observed across the polymeric chains and their fit to the electron density. The red, orange, yellow and green segments of the lower bar indicate the fraction of residues that contain outliers for ≥ 3 , 2, 1 and 0 types of geometric quality criteria respectively. A grey segment represents the fraction of residues that are not modelled. The numeric value for each fraction is indicated below the corresponding segment, with a dot representing fractions $\leq 5\%$. The upper red bar (where present) indicates the fraction of residues that have poor fit to the electron density. The numeric value is given above the bar.

Mol	Chain	Length	Quality of chain
1	A	360	 81% 16% ..
1	B	360	 81% 15% ..
1	C	360	 82% 14% ..
1	D	360	 83% 12% ..

2 Entry composition [i](#)

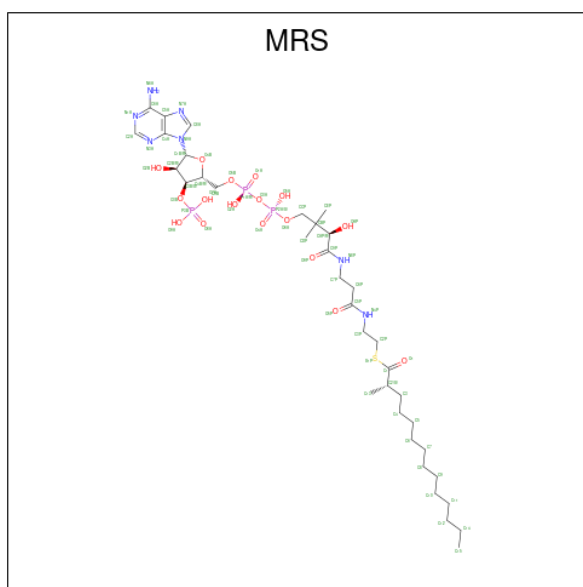
There are 4 unique types of molecules in this entry. The entry contains 12376 atoms, of which 0 are hydrogens and 0 are deuteriums.

In the tables below, the ZeroOcc column contains the number of atoms modelled with zero occupancy, the AltConf column contains the number of residues with at least one atom in alternate conformation and the Trace column contains the number of residues modelled with at most 2 atoms.

- Molecule 1 is a protein called probable alpha-methylacyl-CoA racemase MCR.

Mol	Chain	Residues	Atoms					ZeroOcc	AltConf	Trace
1	A	354	Total	C	N	O	S	0	0	0
			2679	1683	481	500	15			
1	B	354	Total	C	N	O	S	0	0	0
			2679	1683	481	500	15			
1	C	354	Total	C	N	O	S	0	0	0
			2679	1683	481	500	15			
1	D	354	Total	C	N	O	S	0	0	0
			2679	1683	481	500	15			

- Molecule 2 is (S)-2-METHYLMYRISTOYL-COENZYME A (CCD ID: MRS) (formula: $C_{36}H_{64}N_7O_{17}P_3S$).



Mol	Chain	Residues	Atoms					ZeroOcc	AltConf
2	A	1	Total	C	N	O	P S	0	0
			64	36	7	17	3 1		
2	B	1	Total	C	N	O	P S	0	0
			64	36	7	17	3 1		

Continued on next page...

Continued from previous page...

Mol	Chain	Residues	Atoms					ZeroOcc	AltConf
2	C	1	Total	C	N	O	P	S	
			64	36	7	17	3	1	0
2	D	1	Total	C	N	O	P	S	
			64	36	7	17	3	1	0

- Molecule 3 is GLYCEROL (CCD ID: GOL) (formula: $C_3H_8O_3$).



Mol	Chain	Residues	Atoms			ZeroOcc	AltConf
3	A	1	Total	C	O		
			6	3	3	0	0
3	B	1	Total	C	O		
			6	3	3	0	0
3	C	1	Total	C	O		
			6	3	3	0	0
3	D	1	Total	C	O		
			6	3	3	0	0

- Molecule 4 is water.

Mol	Chain	Residues	Atoms		ZeroOcc	AltConf
4	A	349	Total	O		
			349	349	0	0
4	B	341	Total	O		
			341	341	0	0
4	C	357	Total	O		
			357	357	0	0

Continued on next page...

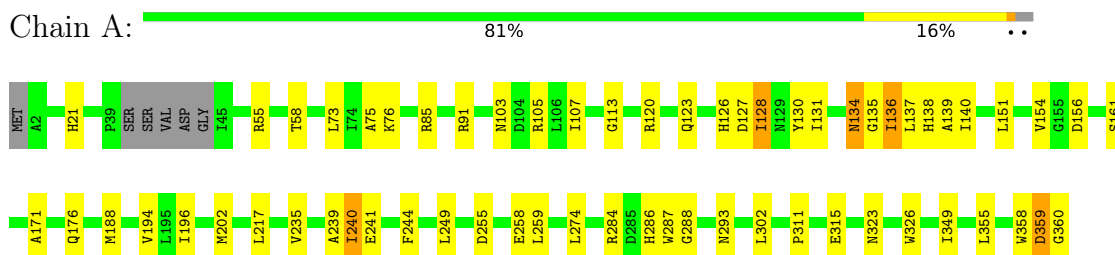
Continued from previous page...

Mol	Chain	Residues	Atoms		ZeroOcc	AltConf
4	D	333	Total 333	O 333	0	0

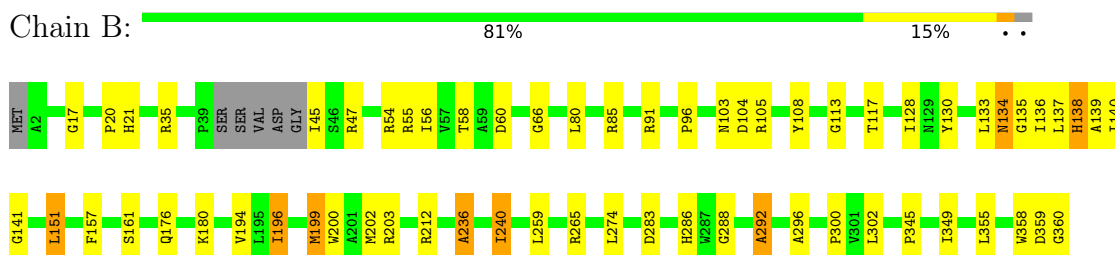
3 Residue-property plots

These plots are drawn for all protein, RNA, DNA and oligosaccharide chains in the entry. The first graphic for a chain summarises the proportions of the various outlier classes displayed in the second graphic. The second graphic shows the sequence view annotated by issues in geometry and electron density. Residues are color-coded according to the number of geometric quality criteria for which they contain at least one outlier: green = 0, yellow = 1, orange = 2 and red = 3 or more. A red dot above a residue indicates a poor fit to the electron density ($RSRZ > 2$). Stretches of 2 or more consecutive residues without any outlier are shown as a green connector. Residues present in the sample, but not in the model, are shown in grey.

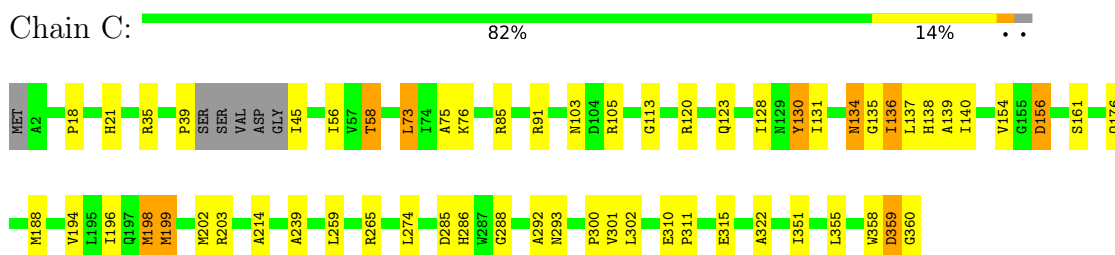
- Molecule 1: probable alpha-methylacyl-CoA racemase MCR



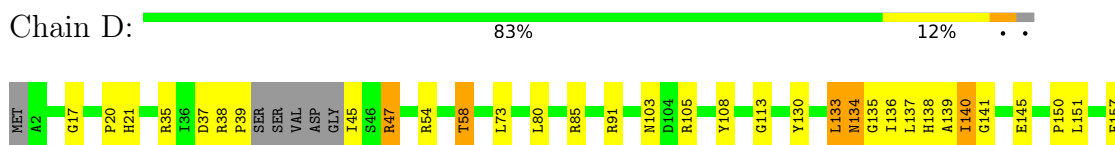
- Molecule 1: probable alpha-methylacyl-CoA racemase MCR



- Molecule 1: probable alpha-methylacyl-CoA racemase MCR



- Molecule 1: probable alpha-methylacyl-CoA racemase MCR





4 Data and refinement statistics

Property	Value	Source
Space group	C 1 2 1	Depositor
Cell constants a, b, c, α , β , γ	215.74Å 79.75Å 117.92Å 90.00° 123.14° 90.00°	Depositor
Resolution (Å)	19.80 – 1.70 19.80 – 1.70	Depositor EDS
% Data completeness (in resolution range)	97.4 (19.80-1.70) 97.4 (19.80-1.70)	Depositor EDS
R_{merge}	0.05	Depositor
R_{sym}	0.05	Depositor
$\langle I/\sigma(I) \rangle$ ¹	4.07 (at 1.70Å)	Xtriage
Refinement program	REFMAC 5.2.0019	Depositor
R, R_{free}	0.236 , 0.276 0.219 , 0.256	Depositor DCC
R_{free} test set	8946 reflections (4.87%)	wwPDB-VP
Wilson B-factor (Å ²)	19.0	Xtriage
Anisotropy	0.289	Xtriage
Bulk solvent k_{sol} (e/Å ³), B_{sol} (Å ²)	0.39 , 49.9	EDS
L-test for twinning ²	$\langle L \rangle = 0.48$, $\langle L^2 \rangle = 0.30$	Xtriage
Estimated twinning fraction	0.477 for -h-2*k,l	Xtriage
F_o, F_c correlation	0.97	EDS
Total number of atoms	12376	wwPDB-VP
Average B, all atoms (Å ²)	28.0	wwPDB-VP

Xtriage's analysis on translational NCS is as follows: *The analyses of the Patterson function reveals a significant off-origin peak that is 76.91 % of the origin peak, indicating pseudo-translational symmetry. The chance of finding a peak of this or larger height randomly in a structure without pseudo-translational symmetry is equal to 9.4635e-07. The detected translational NCS is most likely also responsible for the elevated intensity ratio.*

¹Intensities estimated from amplitudes.

²Theoretical values of $\langle |L| \rangle$, $\langle L^2 \rangle$ for acentric reflections are 0.5, 0.333 respectively for untwinned datasets, and 0.375, 0.2 for perfectly twinned datasets.

5 Model quality

5.1 Standard geometry

Bond lengths and bond angles in the following residue types are not validated in this section: GOL, MRS

The Z score for a bond length (or angle) is the number of standard deviations the observed value is removed from the expected value. A bond length (or angle) with $|Z| > 5$ is considered an outlier worth inspection. RMSZ is the root-mean-square of all Z scores of the bond lengths (or angles).

Mol	Chain	Bond lengths		Bond angles	
		RMSZ	$\# Z > 5$	RMSZ	$\# Z > 5$
1	A	1.10	9/2740 (0.3%)	1.06	3/3727 (0.1%)
1	B	1.08	12/2740 (0.4%)	1.10	4/3727 (0.1%)
1	C	1.09	9/2740 (0.3%)	1.05	3/3727 (0.1%)
1	D	1.06	7/2740 (0.3%)	1.09	4/3727 (0.1%)
All	All	1.08	37/10960 (0.3%)	1.08	14/14908 (0.1%)

All (37) bond length outliers are listed below:

Mol	Chain	Res	Type	Atoms	Z	Observed(Å)	Ideal(Å)
1	C	136	ILE	N-CA	7.65	1.55	1.46
1	A	138	HIS	N-CA	-7.28	1.36	1.46
1	C	139	ALA	N-CA	7.23	1.55	1.46
1	A	136	ILE	N-CA	7.12	1.55	1.46
1	B	136	ILE	N-CA	7.10	1.55	1.46
1	A	139	ALA	N-CA	6.96	1.55	1.46
1	D	136	ILE	N-CA	6.94	1.54	1.46
1	D	157	PHE	CA-C	6.69	1.57	1.52
1	C	131	ILE	CA-CB	6.52	1.61	1.54
1	C	239	ALA	CA-CB	-6.39	1.44	1.52
1	D	138	HIS	N-CA	-6.30	1.38	1.46
1	A	131	ILE	CA-CB	6.06	1.61	1.54
1	B	138	HIS	N-CA	-6.05	1.38	1.46
1	A	239	ALA	CA-CB	-6.04	1.45	1.52
1	C	196	ILE	CA-C	5.95	1.60	1.53
1	B	140	ILE	N-CA	5.95	1.53	1.46
1	D	139	ALA	N-CA	5.89	1.53	1.46
1	C	138	HIS	N-CA	-5.82	1.38	1.46
1	C	140	ILE	N-CA	5.82	1.53	1.46
1	C	198	MET	SD-CE	-5.65	1.65	1.79
1	B	139	ALA	N-CA	5.62	1.53	1.46
1	B	196	ILE	CA-C	5.59	1.59	1.53

Continued on next page...

Continued from previous page...

Mol	Chain	Res	Type	Atoms	Z	Observed(Å)	Ideal(Å)
1	A	127	ASP	N-CA	5.58	1.52	1.46
1	A	196	ILE	CA-C	5.50	1.59	1.53
1	D	139	ALA	CA-CB	-5.48	1.43	1.53
1	D	196	ILE	CA-C	5.42	1.59	1.53
1	A	140	ILE	N-CA	5.39	1.52	1.46
1	C	301	VAL	N-CA	5.38	1.53	1.46
1	B	296	ALA	CA-CB	-5.37	1.44	1.53
1	D	140	ILE	N-CA	5.23	1.52	1.46
1	B	138	HIS	CA-C	5.20	1.59	1.52
1	B	139	ALA	CA-CB	-5.20	1.44	1.53
1	B	128	ILE	CB-CG2	5.18	1.69	1.52
1	B	157	PHE	CA-C	5.13	1.57	1.52
1	B	236	ALA	N-CA	5.08	1.52	1.46
1	B	200	TRP	N-CA	5.08	1.52	1.46
1	A	128	ILE	CA-CB	-5.01	1.48	1.54

All (14) bond angle outliers are listed below:

Mol	Chain	Res	Type	Atoms	Z	Observed(°)	Ideal(°)
1	A	137	LEU	N-CA-C	6.60	119.31	111.33
1	C	137	LEU	N-CA-C	6.53	119.23	111.33
1	B	137	LEU	N-CA-C	6.46	119.14	111.33
1	B	240	ILE	N-CA-C	-6.13	104.88	110.82
1	D	141	GLY	N-CA-C	5.74	118.73	111.85
1	D	240	ILE	N-CA-C	-5.67	105.33	110.82
1	D	202	MET	N-CA-C	5.53	117.30	111.28
1	A	240	ILE	N-CA-C	-5.40	105.82	110.74
1	D	137	LEU	N-CA-C	5.32	117.76	111.33
1	C	156	ASP	N-CA-C	5.31	117.07	111.28
1	B	138	HIS	O-C-N	5.31	128.43	122.22
1	A	156	ASP	N-CA-C	5.20	116.94	111.28
1	B	141	GLY	N-CA-C	5.12	117.99	111.85
1	C	130	TYR	N-CA-C	-5.08	105.83	111.36

There are no chirality outliers.

There are no planarity outliers.

5.2 Too-close contacts ⓘ

In the following table, the Non-H and H(model) columns list the number of non-hydrogen atoms and hydrogen atoms in the chain respectively. The H(added) column lists the number of hydrogen

atoms added and optimized by MolProbity. The Clashes column lists the number of clashes within the asymmetric unit, whereas Symm-Clashes lists symmetry-related clashes.

Mol	Chain	Non-H	H(model)	H(added)	Clashes	Symm-Clashes
1	A	2679	0	2623	54	0
1	B	2679	0	2623	48	0
1	C	2679	0	2623	52	0
1	D	2679	0	2623	43	0
2	A	64	0	60	5	0
2	B	64	0	60	2	0
2	C	64	0	60	3	0
2	D	64	0	60	1	0
3	A	6	0	8	2	0
3	B	6	0	8	1	0
3	C	6	0	8	0	0
3	D	6	0	8	0	0
4	A	349	0	0	15	0
4	B	341	0	0	20	0
4	C	357	0	0	10	0
4	D	333	0	0	16	0
All	All	12376	0	10764	179	0

The all-atom clashscore is defined as the number of clashes found per 1000 atoms (including hydrogen atoms). The all-atom clashscore for this structure is 8.

All (179) close contacts within the same asymmetric unit are listed below, sorted by their clash magnitude.

Atom-1	Atom-2	Interatomic distance (Å)	Clash overlap (Å)
1:B:292:ALA:HB1	4:B:2640:HOH:O	1.14	1.27
1:D:35:ARG:HB2	4:D:2633:HOH:O	1.47	1.15
1:B:35:ARG:HB2	4:B:2641:HOH:O	1.43	1.14
1:D:283:ASP:HB2	4:D:2628:HOH:O	1.55	1.06
1:B:345:PRO:HG2	4:B:2636:HOH:O	1.68	0.94
1:D:288:GLY:O	4:D:2624:HOH:O	1.92	0.88
1:B:288:GLY:O	4:B:2412:HOH:O	1.92	0.86
1:B:283:ASP:HB2	4:B:2638:HOH:O	1.75	0.85
1:C:286:HIS:CD2	4:C:2652:HOH:O	2.29	0.84
1:D:288:GLY:HA2	4:D:2461:HOH:O	1.75	0.83
1:B:288:GLY:HA2	4:B:2427:HOH:O	1.81	0.79
1:C:176:GLN:HE21	1:D:176:GLN:HE21	1.32	0.76
1:A:315:GLU:HG3	4:A:2448:HOH:O	1.84	0.75
1:C:300:PRO:HB3	4:C:2501:HOH:O	1.87	0.75
1:B:259:LEU:HD22	1:B:274:LEU:HD13	1.69	0.74

Continued on next page...

Continued from previous page...

Atom-1	Atom-2	Interatomic distance (Å)	Clash overlap (Å)
1:A:176:GLN:HE21	1:B:176:GLN:HE21	1.34	0.73
1:C:120:ARG:HH11	1:C:123:GLN:HE22	1.34	0.72
1:A:259:LEU:HD22	1:A:274:LEU:HD13	1.72	0.72
1:C:355:LEU:HD22	1:C:360:GLY:HA3	1.71	0.70
1:D:259:LEU:HD22	1:D:274:LEU:HD13	1.74	0.69
1:B:85:ARG:HH12	1:B:91:ARG:HH22	1.39	0.69
1:A:91:ARG:NH1	2:A:1751:MRS:O7A	2.22	0.69
1:A:287:TRP:HB2	4:A:2650:HOH:O	1.93	0.69
1:A:85:ARG:NH1	4:A:2456:HOH:O	2.19	0.68
1:C:358:TRP:O	1:C:359:ASP:HB2	1.94	0.68
1:A:286:HIS:HE1	4:A:2398:HOH:O	1.77	0.67
1:A:284:ARG:HA	4:A:2650:HOH:O	1.95	0.67
1:C:286:HIS:HE1	4:C:2355:HOH:O	1.78	0.67
1:D:47:ARG:HG2	4:D:2572:HOH:O	1.96	0.65
1:D:286:HIS:HE1	4:D:2427:HOH:O	1.79	0.65
1:A:85:ARG:HD3	4:A:2351:HOH:O	1.97	0.64
1:C:259:LEU:HD22	1:C:274:LEU:HD13	1.80	0.64
1:A:188:MET:HE1	2:A:1751:MRS:H21	1.80	0.63
1:A:235:VAL:CG1	4:A:2650:HOH:O	2.44	0.63
1:D:38:ARG:HD3	4:D:2549:HOH:O	1.97	0.63
1:A:120:ARG:HH11	1:A:123:GLN:HE22	1.46	0.62
1:C:85:ARG:HD3	4:C:2348:HOH:O	2.00	0.62
1:B:286:HIS:HE1	4:B:2414:HOH:O	1.82	0.62
1:A:311:PRO:O	1:A:315:GLU:HG2	2.00	0.61
1:D:134:ASN:C	1:D:134:ASN:HD22	2.09	0.59
1:C:188:MET:HE1	2:C:1753:MRS:H21	1.84	0.58
1:A:358:TRP:O	1:A:359:ASP:HB2	2.02	0.58
1:A:103:ASN:C	1:A:103:ASN:HD22	2.11	0.58
1:B:292:ALA:HA	4:B:2412:HOH:O	2.04	0.57
1:D:91:ARG:NH1	2:D:1754:MRS:O7A	2.26	0.57
1:C:103:ASN:HD22	1:C:103:ASN:C	2.12	0.57
1:A:76:LYS:HE3	1:A:359:ASP:O	2.04	0.57
1:B:55:ARG:HD2	1:B:349:ILE:HD11	1.86	0.57
1:D:85:ARG:NH1	4:D:2618:HOH:O	2.37	0.56
1:B:134:ASN:HD22	1:B:134:ASN:C	2.11	0.56
1:A:286:HIS:HD2	4:C:2438:HOH:O	1.89	0.55
1:C:91:ARG:NH1	2:C:1753:MRS:O7A	2.38	0.55
1:A:55:ARG:HD2	1:A:349:ILE:HD11	1.88	0.55
1:C:21:HIS:HD2	1:C:161:SER:OG	1.90	0.54
2:A:1751:MRS:H72	4:B:2431:HOH:O	2.06	0.54
1:A:113:GLY:HA3	1:A:130:TYR:CZ	2.42	0.54

Continued on next page...

Continued from previous page...

Atom-1	Atom-2	Interatomic distance (Å)	Clash overlap (Å)
1:D:140:ILE:HD13	1:D:150:PRO:HG3	1.90	0.54
1:A:288:GLY:HA2	4:A:2606:HOH:O	2.07	0.54
1:C:176:GLN:NE2	1:D:176:GLN:HE21	2.04	0.54
1:C:285:ASP:OD1	4:C:2650:HOH:O	2.19	0.54
1:C:302:LEU:O	1:D:135:GLY:HA2	2.07	0.53
1:C:176:GLN:HG2	4:D:2634:HOH:O	2.08	0.53
1:B:358:TRP:O	1:B:359:ASP:HB2	2.08	0.53
1:D:103:ASN:ND2	1:D:105:ARG:H	2.07	0.53
1:A:302:LEU:O	1:B:135:GLY:HA2	2.09	0.53
1:D:292:ALA:HA	4:D:2624:HOH:O	2.09	0.53
1:C:322:ALA:HB1	4:C:2643:HOH:O	2.09	0.52
1:C:199:MET:HE3	1:C:202:MET:HE1	1.92	0.52
1:C:113:GLY:HA3	1:C:130:TYR:CZ	2.44	0.51
1:C:176:GLN:HE21	1:D:176:GLN:NE2	2.05	0.51
1:D:323:ASN:HB2	4:D:2497:HOH:O	2.10	0.51
1:A:21:HIS:HD2	1:A:161:SER:OG	1.92	0.51
1:A:235:VAL:HG13	4:A:2650:HOH:O	2.08	0.51
1:D:37:ASP:O	1:D:58:THR:HA	2.11	0.51
1:B:300:PRO:HB3	4:B:2427:HOH:O	2.10	0.50
1:A:103:ASN:ND2	1:A:105:ARG:H	2.09	0.50
1:B:103:ASN:ND2	1:B:105:ARG:H	2.10	0.50
1:D:324:GLY:C	4:D:2614:HOH:O	2.53	0.50
1:C:120:ARG:NH1	1:C:123:GLN:HE22	2.04	0.50
1:C:45:ILE:O	1:C:45:ILE:HG23	2.11	0.50
1:C:76:LYS:HE3	1:C:359:ASP:O	2.12	0.50
1:C:198:MET:HG2	1:C:202:MET:HE2	1.92	0.50
1:A:134:ASN:C	1:A:134:ASN:HD22	2.18	0.49
1:B:288:GLY:CA	4:B:2427:HOH:O	2.52	0.49
1:C:214:ALA:O	1:C:265:ARG:NH2	2.45	0.49
1:C:203:ARG:NH2	4:C:2540:HOH:O	2.45	0.49
1:C:134:ASN:HD22	1:C:134:ASN:C	2.19	0.49
1:C:286:HIS:CE1	4:C:2355:HOH:O	2.61	0.48
4:A:2498:HOH:O	1:C:286:HIS:HD2	1.95	0.48
1:D:85:ARG:HD3	4:D:2360:HOH:O	2.13	0.48
1:A:176:GLN:NE2	1:B:176:GLN:HE21	2.08	0.48
1:A:103:ASN:HD22	1:A:105:ARG:H	1.59	0.48
1:C:103:ASN:ND2	1:C:105:ARG:H	2.11	0.48
1:A:113:GLY:HA3	1:A:130:TYR:CE1	2.49	0.48
1:C:135:GLY:HA2	1:D:302:LEU:O	2.12	0.47
1:B:17:GLY:O	1:B:20:PRO:HD2	2.14	0.47
1:C:39:PRO:O	4:C:2651:HOH:O	2.20	0.47

Continued on next page...

Continued from previous page...

Atom-1	Atom-2	Interatomic distance (Å)	Clash overlap (Å)
1:A:176:GLN:HE21	1:B:176:GLN:NE2	2.08	0.47
1:D:54:ARG:NE	4:D:2633:HOH:O	2.48	0.47
1:D:286:HIS:HD2	4:D:2396:HOH:O	1.97	0.47
1:C:35:ARG:HB3	1:C:56:ILE:HD13	1.97	0.47
1:A:194:VAL:O	1:B:21:HIS:HE1	1.97	0.47
1:B:355:LEU:HD22	1:B:360:GLY:HA3	1.97	0.47
1:A:176:GLN:HG2	4:B:2597:HOH:O	2.15	0.47
1:D:21:HIS:HD2	1:D:161:SER:OG	1.97	0.47
1:A:135:GLY:HA2	1:B:302:LEU:O	2.14	0.47
1:A:85:ARG:NE	2:A:1751:MRS:O1A	2.48	0.46
1:A:103:ASN:C	1:A:103:ASN:ND2	2.73	0.46
1:C:176:GLN:HG2	1:D:176:GLN:NE2	2.30	0.46
1:D:85:ARG:HG3	4:D:2590:HOH:O	2.16	0.46
1:A:126:HIS:HA	2:A:1751:MRS:H22	1.98	0.46
1:B:80:LEU:HD23	1:B:108:TYR:CE1	2.51	0.46
1:D:196:ILE:HG12	1:D:199:MET:HB2	1.97	0.46
1:A:355:LEU:HD22	1:A:360:GLY:HA3	1.98	0.46
1:C:39:PRO:HA	1:C:58:THR:CG2	2.46	0.46
1:C:103:ASN:C	1:C:103:ASN:ND2	2.72	0.46
1:B:265:ARG:NH1	4:B:2379:HOH:O	2.43	0.45
1:C:103:ASN:HD22	1:C:105:ARG:H	1.64	0.45
1:D:80:LEU:HD23	1:D:108:TYR:CE1	2.51	0.45
1:B:117:THR:HB	4:B:2559:HOH:O	2.15	0.45
1:B:196:ILE:HG12	1:B:199:MET:HB2	1.97	0.45
1:D:231:ASP:OD1	1:D:231:ASP:N	2.50	0.45
1:A:240:ILE:CG2	3:A:2306:GOL:H31	2.47	0.45
1:D:113:GLY:HA3	1:D:130:TYR:CZ	2.52	0.45
2:C:1753:MRS:H41	2:C:1753:MRS:H71	1.78	0.45
1:C:176:GLN:CG	1:D:176:GLN:HE21	2.31	0.44
1:C:39:PRO:HA	1:C:58:THR:HG21	1.99	0.44
1:C:194:VAL:O	1:D:21:HIS:HE1	2.00	0.44
1:A:21:HIS:HE1	1:B:194:VAL:O	2.01	0.44
1:A:120:ARG:NH1	1:A:123:GLN:HE22	2.14	0.44
1:C:21:HIS:HE1	1:D:194:VAL:O	2.01	0.44
1:C:113:GLY:HA3	1:C:130:TYR:CE1	2.52	0.44
1:A:287:TRP:HD1	4:A:2650:HOH:O	2.00	0.44
1:B:85:ARG:CZ	4:B:2568:HOH:O	2.66	0.44
1:A:176:GLN:HG2	1:B:176:GLN:NE2	2.33	0.44
1:B:113:GLY:HA3	1:B:130:TYR:CE1	2.53	0.44
1:A:255:ASP:HB3	1:A:258:GLU:HG3	1.99	0.44
1:B:265:ARG:NH2	4:B:2626:HOH:O	1.92	0.44

Continued on next page...

Continued from previous page...

Atom-1	Atom-2	Interatomic distance (Å)	Clash overlap (Å)
1:B:47:ARG:HB2	4:B:2599:HOH:O	2.18	0.43
1:B:199:MET:HE3	1:B:202:MET:HE1	1.99	0.43
1:B:96:PRO:HG2	4:B:2552:HOH:O	2.18	0.43
4:A:2476:HOH:O	2:B:1752:MRS:H72	2.18	0.43
1:B:60:ASP:O	1:B:66:GLY:HA3	2.19	0.43
1:D:113:GLY:HA3	1:D:130:TYR:CE1	2.54	0.43
1:B:54:ARG:NE	4:B:2641:HOH:O	2.52	0.42
1:D:17:GLY:O	1:D:20:PRO:HD2	2.19	0.42
1:A:287:TRP:CD1	4:A:2650:HOH:O	2.72	0.42
1:B:113:GLY:HA3	1:B:130:TYR:CZ	2.53	0.42
1:D:39:PRO:HG3	1:D:58:THR:HG23	2.01	0.42
1:B:240:ILE:O	3:B:2304:GOL:H32	2.20	0.42
1:A:235:VAL:HG11	4:A:2650:HOH:O	2.13	0.42
1:B:286:HIS:HD2	4:B:2375:HOH:O	2.02	0.42
1:C:310:GLU:HG2	1:D:133:LEU:HD13	2.01	0.42
1:D:103:ASN:C	1:D:103:ASN:HD22	2.28	0.42
1:A:249:LEU:HD23	1:A:249:LEU:HA	1.88	0.41
1:A:241:GLU:HB2	1:A:244:PHE:CD2	2.56	0.41
1:C:311:PRO:O	1:C:315:GLU:HG3	2.19	0.41
1:D:134:ASN:C	1:D:134:ASN:ND2	2.77	0.41
1:A:75:ALA:HA	1:A:103:ASN:HB2	2.02	0.41
1:A:136:ILE:HG21	1:A:154:VAL:HG11	2.01	0.41
1:C:136:ILE:HG21	1:C:154:VAL:HG11	2.03	0.41
1:B:104:ASP:OD2	1:B:180:LYS:HE3	2.20	0.41
1:B:85:ARG:NH1	1:B:91:ARG:HH22	2.11	0.41
1:A:326:TRP:HD1	4:A:2630:HOH:O	2.03	0.41
1:B:21:HIS:HD2	1:B:161:SER:OG	2.04	0.41
1:D:291:PHE:O	1:D:292:ALA:C	2.63	0.41
1:A:202:MET:HG2	2:B:1752:MRS:H122	2.01	0.41
1:C:73:LEU:CD2	1:C:351:ILE:HD11	2.51	0.41
1:A:217:LEU:O	1:B:151:LEU:HA	2.21	0.41
1:A:240:ILE:HG22	3:A:2306:GOL:H31	2.02	0.41
1:C:18:PRO:HB3	1:C:156:ASP:O	2.21	0.41
1:C:75:ALA:HA	1:C:103:ASN:HB2	2.03	0.40
1:B:138:HIS:O	1:B:212:ARG:HD3	2.21	0.40
1:B:35:ARG:HB3	1:B:56:ILE:HD13	2.03	0.40
1:A:107:ILE:HD12	1:A:171:ALA:HB1	2.04	0.40
1:A:128:ILE:HG12	1:B:236:ALA:HB1	2.02	0.40
1:C:128:ILE:HG12	1:D:236:ALA:HB1	2.03	0.40
1:C:288:GLY:O	1:C:292:ALA:HB2	2.20	0.40
1:C:85:ARG:HH12	1:C:91:ARG:NH2	2.19	0.40

There are no symmetry-related clashes.

5.3 Torsion angles

5.3.1 Protein backbone

In the following table, the Percentiles column shows the percent Ramachandran outliers of the chain as a percentile score with respect to all X-ray entries followed by that with respect to entries of similar resolution.

The Analysed column shows the number of residues for which the backbone conformation was analysed, and the total number of residues.

Mol	Chain	Analysed	Favoured	Allowed	Outliers	Percentiles	
1	A	350/360 (97%)	335 (96%)	13 (4%)	2 (1%)	21	9
1	B	350/360 (97%)	334 (95%)	14 (4%)	2 (1%)	21	9
1	C	350/360 (97%)	335 (96%)	14 (4%)	1 (0%)	36	22
1	D	350/360 (97%)	336 (96%)	12 (3%)	2 (1%)	21	9
All	All	1400/1440 (97%)	1340 (96%)	53 (4%)	7 (0%)	24	12

All (7) Ramachandran outliers are listed below:

Mol	Chain	Res	Type
1	B	292	ALA
1	C	359	ASP
1	D	292	ALA
1	A	359	ASP
1	A	151	LEU
1	B	151	LEU
1	D	151	LEU

5.3.2 Protein sidechains

In the following table, the Percentiles column shows the percent sidechain outliers of the chain as a percentile score with respect to all X-ray entries followed by that with respect to entries of similar resolution.

The Analysed column shows the number of residues for which the sidechain conformation was analysed, and the total number of residues.

Mol	Chain	Analysed	Rotameric	Outliers	Percentiles	
1	A	270/275 (98%)	265 (98%)	5 (2%)	50	34

Continued on next page...

Continued from previous page...

Mol	Chain	Analysed	Rotameric	Outliers	Percentiles	
1	B	270/275 (98%)	264 (98%)	6 (2%)	45	29
1	C	270/275 (98%)	265 (98%)	5 (2%)	50	34
1	D	270/275 (98%)	258 (96%)	12 (4%)	25	10
All	All	1080/1100 (98%)	1052 (97%)	28 (3%)	40	23

All (28) residues with a non-rotameric sidechain are listed below:

Mol	Chain	Res	Type
1	A	58	THR
1	A	73	LEU
1	A	134	ASN
1	A	293	ASN
1	A	323	ASN
1	B	45	ILE
1	B	58	THR
1	B	133	LEU
1	B	134	ASN
1	B	199	MET
1	B	203	ARG
1	C	58	THR
1	C	73	LEU
1	C	134	ASN
1	C	199	MET
1	C	293	ASN
1	D	45	ILE
1	D	47	ARG
1	D	58	THR
1	D	73	LEU
1	D	133	LEU
1	D	134	ASN
1	D	145	GLU
1	D	199	MET
1	D	203	ARG
1	D	259	LEU
1	D	323	ASN
1	D	359	ASP

Sometimes sidechains can be flipped to improve hydrogen bonding and reduce clashes. All (33) such sidechains are listed below:

Mol	Chain	Res	Type
1	A	21	HIS
1	A	103	ASN
1	A	116	GLN
1	A	123	GLN
1	A	134	ASN
1	A	176	GLN
1	A	263	ASN
1	A	286	HIS
1	A	293	ASN
1	A	323	ASN
1	A	327	GLN
1	B	21	HIS
1	B	103	ASN
1	B	134	ASN
1	B	176	GLN
1	B	286	HIS
1	B	327	GLN
1	C	21	HIS
1	C	65	GLN
1	C	103	ASN
1	C	116	GLN
1	C	123	GLN
1	C	134	ASN
1	C	176	GLN
1	C	286	HIS
1	C	327	GLN
1	D	21	HIS
1	D	103	ASN
1	D	134	ASN
1	D	176	GLN
1	D	286	HIS
1	D	293	ASN
1	D	327	GLN

5.3.3 RNA ⓘ

There are no RNA molecules in this entry.

5.4 Non-standard residues in protein, DNA, RNA chains ⓘ

There are no non-standard protein/DNA/RNA residues in this entry.

5.5 Carbohydrates [i](#)

There are no oligosaccharides in this entry.

5.6 Ligand geometry [i](#)

8 ligands are modelled in this entry.

In the following table, the Counts columns list the number of bonds (or angles) for which Mogul statistics could be retrieved, the number of bonds (or angles) that are observed in the model and the number of bonds (or angles) that are defined in the Chemical Component Dictionary. The Link column lists molecule types, if any, to which the group is linked. The Z score for a bond length (or angle) is the number of standard deviations the observed value is removed from the expected value. A bond length (or angle) with $|Z| > 2$ is considered an outlier worth inspection. RMSZ is the root-mean-square of all Z scores of the bond lengths (or angles).

Mol	Type	Chain	Res	Link	Bond lengths			Bond angles		
					Counts	RMSZ	# Z > 2	Counts	RMSZ	# Z > 2
2	MRS	D	1754	-	63,66,66	1.05	4 (6%)	85,93,93	1.56	15 (17%)
2	MRS	C	1753	-	63,66,66	1.03	4 (6%)	85,93,93	1.62	15 (17%)
3	GOL	B	2304	-	5,5,5	0.31	0	5,5,5	0.69	0
2	MRS	A	1751	-	63,66,66	1.09	4 (6%)	85,93,93	1.61	15 (17%)
2	MRS	B	1752	-	63,66,66	1.00	4 (6%)	85,93,93	1.58	14 (16%)
3	GOL	D	2303	-	5,5,5	0.34	0	5,5,5	1.09	1 (20%)
3	GOL	C	2302	-	5,5,5	0.40	0	5,5,5	0.57	0
3	GOL	A	2306	-	5,5,5	0.32	0	5,5,5	0.83	0

In the following table, the Chirals column lists the number of chiral outliers, the number of chiral centers analysed, the number of these observed in the model and the number defined in the Chemical Component Dictionary. Similar counts are reported in the Torsion and Rings columns. '-' means no outliers of that kind were identified.

Mol	Type	Chain	Res	Link	Chirals	Torsions	Rings
2	MRS	D	1754	-	-	12/66/83/83	0/3/3/3
2	MRS	C	1753	-	-	13/66/83/83	0/3/3/3
3	GOL	B	2304	-	-	4/4/4/4	-
2	MRS	A	1751	-	-	15/66/83/83	0/3/3/3
2	MRS	B	1752	-	-	14/66/83/83	0/3/3/3
3	GOL	D	2303	-	-	0/4/4/4	-
3	GOL	C	2302	-	-	1/4/4/4	-
3	GOL	A	2306	-	-	3/4/4/4	-

All (16) bond length outliers are listed below:

Mol	Chain	Res	Type	Atoms	Z	Observed(Å)	Ideal(Å)
2	A	1751	MRS	P1A-O3A	3.98	1.63	1.59
2	D	1754	MRS	P1A-O3A	3.76	1.63	1.59
2	C	1753	MRS	P1A-O3A	3.62	1.63	1.59
2	A	1751	MRS	P2A-O3A	3.35	1.63	1.59
2	B	1752	MRS	P1A-O3A	3.23	1.63	1.59
2	B	1752	MRS	C5A-C6A	3.10	1.49	1.41
2	D	1754	MRS	C5A-C6A	3.09	1.49	1.41
2	C	1753	MRS	C5A-C6A	3.08	1.49	1.41
2	A	1751	MRS	C5A-C6A	3.07	1.49	1.41
2	D	1754	MRS	P2A-O3A	2.97	1.62	1.59
2	C	1753	MRS	P2A-O3A	2.61	1.62	1.59
2	A	1751	MRS	C8A-N7A	2.23	1.36	1.31
2	D	1754	MRS	C8A-N7A	2.19	1.35	1.31
2	B	1752	MRS	C8A-N7A	2.15	1.35	1.31
2	C	1753	MRS	C8A-N7A	2.14	1.35	1.31
2	B	1752	MRS	P2A-O3A	2.08	1.61	1.59

All (60) bond angle outliers are listed below:

Mol	Chain	Res	Type	Atoms	Z	Observed(°)	Ideal(°)
2	B	1752	MRS	C5A-C4A-N3A	-5.37	119.33	126.72
2	C	1753	MRS	C5A-C4A-N3A	-5.17	119.60	126.72
2	D	1754	MRS	C5A-C4A-N3A	-5.17	119.60	126.72
2	A	1751	MRS	C5A-C4A-N3A	-5.12	119.67	126.72
2	A	1751	MRS	C7P-N8P-C9P	4.97	131.47	122.55
2	C	1753	MRS	C2P-S1P-C1	4.67	115.13	101.73
2	D	1754	MRS	C7P-N8P-C9P	4.39	130.44	122.55
2	C	1753	MRS	C7P-N8P-C9P	4.32	130.31	122.55
2	A	1751	MRS	N1A-C2A-N3A	-4.14	122.32	128.58
2	D	1754	MRS	N1A-C2A-N3A	-4.03	122.48	128.58
2	C	1753	MRS	N1A-C2A-N3A	-3.96	122.58	128.58
2	A	1751	MRS	C2A-N3A-C4A	3.95	121.48	111.83
2	D	1754	MRS	C2A-N3A-C4A	3.94	121.44	111.83
2	B	1752	MRS	C2A-N3A-C4A	3.90	121.36	111.83
2	A	1751	MRS	C2P-S1P-C1	3.88	112.86	101.73
2	B	1752	MRS	N1A-C2A-N3A	-3.87	122.73	128.58
2	C	1753	MRS	C2A-N3A-C4A	3.86	121.26	111.83
2	B	1752	MRS	C7P-N8P-C9P	3.77	129.31	122.55
2	B	1752	MRS	N9A-C8A-N7A	-3.56	108.88	113.94
2	B	1752	MRS	N3A-C4A-N9A	3.52	133.16	127.17
2	D	1754	MRS	N9A-C8A-N7A	-3.52	108.95	113.94
2	C	1753	MRS	N9A-C8A-N7A	-3.49	108.99	113.94

Continued on next page...

Continued from previous page...

Mol	Chain	Res	Type	Atoms	Z	Observed(°)	Ideal(°)
2	A	1751	MRS	N9A-C8A-N7A	-3.46	109.02	113.94
2	C	1753	MRS	N3A-C4A-N9A	3.37	132.91	127.17
2	D	1754	MRS	N3A-C4A-N9A	3.37	132.90	127.17
2	A	1751	MRS	N3A-C4A-N9A	3.16	132.54	127.17
2	B	1752	MRS	CDP-CBP-CAP	3.06	113.99	108.77
2	B	1752	MRS	C3P-N4P-C5P	3.00	128.41	122.82
2	D	1754	MRS	C3P-N4P-C5P	2.96	128.33	122.82
2	A	1751	MRS	C4A-C5A-N7A	-2.89	107.28	110.58
2	C	1753	MRS	C4A-C5A-N7A	-2.80	107.38	110.58
2	B	1752	MRS	O5A-P2A-O3A	2.79	114.81	107.27
2	B	1752	MRS	O1-C1-S1P	-2.78	120.06	123.80
2	B	1752	MRS	C4A-N9A-C8A	2.77	108.64	105.74
2	C	1753	MRS	C4A-N9A-C8A	2.75	108.63	105.74
2	B	1752	MRS	C4A-C5A-N7A	-2.75	107.44	110.58
2	A	1751	MRS	C2P-C3P-N4P	-2.72	106.74	112.41
2	D	1754	MRS	C4A-N9A-C8A	2.71	108.58	105.74
2	A	1751	MRS	C4A-N9A-C8A	2.67	108.54	105.74
2	D	1754	MRS	O5A-P2A-O3A	2.59	114.28	107.27
2	B	1752	MRS	C5A-N7A-C8A	2.59	107.52	103.45
2	C	1753	MRS	C5A-N7A-C8A	2.56	107.48	103.45
2	D	1754	MRS	C4A-C5A-N7A	-2.51	107.72	110.58
2	A	1751	MRS	C3P-N4P-C5P	2.49	127.47	122.82
2	D	1754	MRS	CDP-CBP-CAP	2.49	113.01	108.77
2	A	1751	MRS	C5A-N7A-C8A	2.48	107.35	103.45
2	D	1754	MRS	C5A-N7A-C8A	2.42	107.25	103.45
2	C	1753	MRS	O3A-P2A-O4A	-2.38	103.55	110.70
2	C	1753	MRS	O1-C1-C2	-2.36	115.61	122.53
2	D	1754	MRS	O1-C1-S1P	-2.25	120.77	123.80
2	B	1752	MRS	C2P-C3P-N4P	-2.23	107.76	112.41
2	C	1753	MRS	C3P-N4P-C5P	2.19	126.90	122.82
2	A	1751	MRS	O5A-P2A-O3A	2.18	113.17	107.27
2	D	1754	MRS	C2P-S1P-C1	2.16	107.92	101.73
2	A	1751	MRS	O1-C1-C2	-2.08	116.45	122.53
3	D	2303	GOL	C3-C2-C1	-2.07	104.21	111.80
2	A	1751	MRS	O1-C1-S1P	-2.04	121.05	123.80
2	C	1753	MRS	C2P-C3P-N4P	-2.04	108.15	112.41
2	C	1753	MRS	CDP-CBP-CAP	2.03	112.23	108.77
2	D	1754	MRS	C6P-C7P-N8P	-2.01	107.71	112.00

There are no chirality outliers.

All (62) torsion outliers are listed below:

Mol	Chain	Res	Type	Atoms
2	A	1751	MRS	C3P-C2P-S1P-C1
2	A	1751	MRS	O1-C1-S1P-C2P
2	A	1751	MRS	C2-C1-S1P-C2P
2	A	1751	MRS	S1P-C1-C2-C13
2	B	1752	MRS	S1P-C1-C2-C13
2	C	1753	MRS	C2-C1-S1P-C2P
2	D	1754	MRS	S1P-C1-C2-C13
2	D	1754	MRS	C1-C2-C3-C4
2	D	1754	MRS	C13-C2-C3-C4
3	B	2304	GOL	O1-C1-C2-O2
3	B	2304	GOL	O1-C1-C2-C3
3	B	2304	GOL	C1-C2-C3-O3
2	C	1753	MRS	C4-C5-C6-C7
2	A	1751	MRS	C13-C2-C3-C4
2	B	1752	MRS	C13-C2-C3-C4
3	A	2306	GOL	O1-C1-C2-C3
3	A	2306	GOL	C1-C2-C3-O3
3	C	2302	GOL	O1-C1-C2-C3
2	A	1751	MRS	C6-C7-C8-C9
2	B	1752	MRS	C6-C7-C8-C9
3	B	2304	GOL	O2-C2-C3-O3
2	C	1753	MRS	C6-C7-C8-C9
2	D	1754	MRS	C4-C5-C6-C7
2	A	1751	MRS	C10-C11-C12-C14
2	B	1752	MRS	C4-C5-C6-C7
2	C	1753	MRS	C10-C11-C12-C14
2	A	1751	MRS	C2-C3-C4-C5
2	D	1754	MRS	C10-C11-C12-C14
2	A	1751	MRS	C1-C2-C3-C4
2	B	1752	MRS	C1-C2-C3-C4
2	A	1751	MRS	C4-C5-C6-C7
2	C	1753	MRS	C7-C8-C9-C10
2	B	1752	MRS	C11-C10-C9-C8
2	C	1753	MRS	O1-C1-S1P-C2P
2	D	1754	MRS	C6-C7-C8-C9
2	D	1754	MRS	C7-C8-C9-C10
2	D	1754	MRS	C11-C10-C9-C8
2	A	1751	MRS	S1P-C2P-C3P-N4P
2	A	1751	MRS	C5-C6-C7-C8
2	C	1753	MRS	C5-C6-C7-C8
2	B	1752	MRS	C10-C11-C12-C14
2	C	1753	MRS	C11-C10-C9-C8
2	D	1754	MRS	P2A-O3A-P1A-O1A

Continued on next page...

Continued from previous page...

Mol	Chain	Res	Type	Atoms
2	C	1753	MRS	C3P-C2P-S1P-C1
2	C	1753	MRS	C1-C2-C3-C4
2	B	1752	MRS	C5-C6-C7-C8
2	A	1751	MRS	C11-C10-C9-C8
3	A	2306	GOL	O1-C1-C2-O2
2	D	1754	MRS	P2A-O3A-P1A-O2A
2	B	1752	MRS	C7-C8-C9-C10
2	A	1751	MRS	P2A-O3A-P1A-O1A
2	B	1752	MRS	P2A-O3A-P1A-O1A
2	C	1753	MRS	P2A-O3A-P1A-O1A
2	B	1752	MRS	C2-C3-C4-C5
2	B	1752	MRS	O4B-C4B-C5B-O5B
2	C	1753	MRS	C3B-O3B-P3B-O7A
2	B	1752	MRS	C3P-C2P-S1P-C1
2	D	1754	MRS	C3P-C2P-S1P-C1
2	A	1751	MRS	P2A-O3A-P1A-O2A
2	B	1752	MRS	P2A-O3A-P1A-O2A
2	C	1753	MRS	P2A-O3A-P1A-O2A
2	D	1754	MRS	O4B-C4B-C5B-O5B

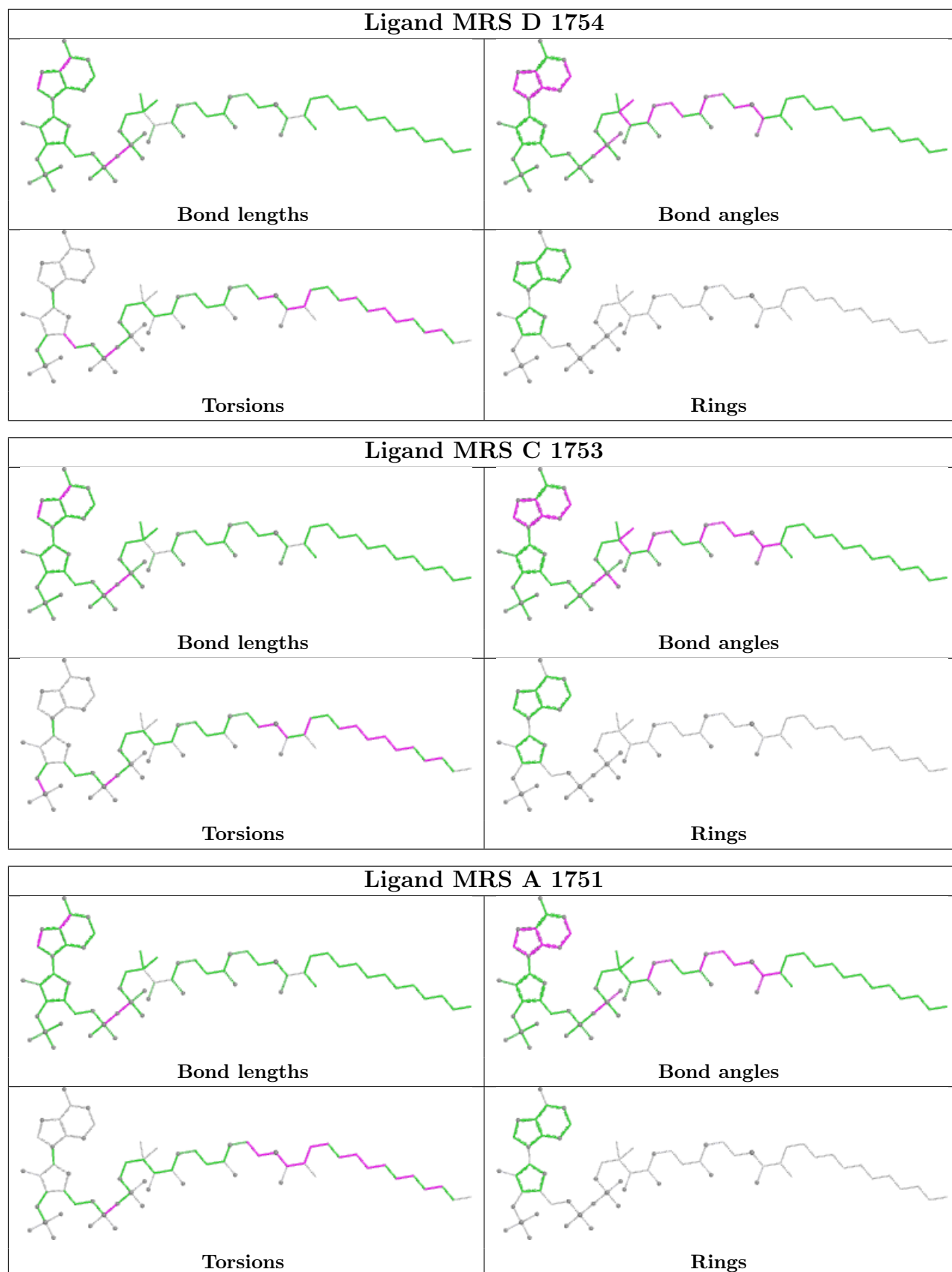
There are no ring outliers.

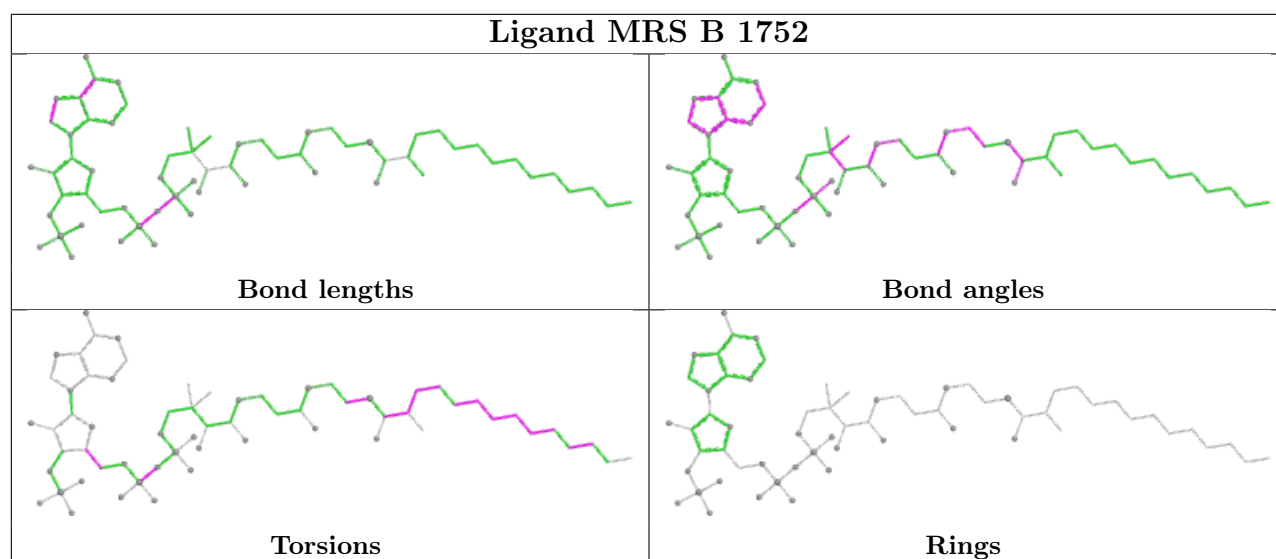
6 monomers are involved in 14 short contacts:

Mol	Chain	Res	Type	Clashes	Symm-Clashes
2	D	1754	MRS	1	0
2	C	1753	MRS	3	0
3	B	2304	GOL	1	0
2	A	1751	MRS	5	0
2	B	1752	MRS	2	0
3	A	2306	GOL	2	0

The following is a two-dimensional graphical depiction of Mogul quality analysis of bond lengths, bond angles, torsion angles, and ring geometry for all instances of the Ligand of Interest. In addition, ligands with molecular weight > 250 and outliers as shown on the validation Tables will also be included. For torsion angles, if less than 5% of the Mogul distribution of torsion angles is within 10 degrees of the torsion angle in question, then that torsion angle is considered an outlier. Any bond that is central to one or more torsion angles identified as an outlier by Mogul will be highlighted in the graph. For rings, the root-mean-square deviation (RMSD) between the ring in question and similar rings identified by Mogul is calculated over all ring torsion angles. If the average RMSD is greater than 60 degrees and the minimal RMSD between the ring in question and any Mogul-identified rings is also greater than 60 degrees, then that ring is considered an outlier. The outliers are highlighted in purple. The color gray indicates Mogul did not find sufficient

equivalents in the CSD to analyse the geometry.





5.7 Other polymers [i](#)

There are no such residues in this entry.

5.8 Polymer linkage issues [i](#)

There are no chain breaks in this entry.

6 Fit of model and data [i](#)

6.1 Protein, DNA and RNA chains [i](#)

In the following table, the column labelled ‘#RSRZ> 2’ contains the number (and percentage) of RSRZ outliers, followed by percent RSRZ outliers for the chain as percentile scores relative to all X-ray entries and entries of similar resolution. The OWAB column contains the minimum, median, 95th percentile and maximum values of the occupancy-weighted average B-factor per residue. The column labelled ‘Q< 0.9’ lists the number of (and percentage) of residues with an average occupancy less than 0.9.

Mol	Chain	Analysed	<RSRZ>	#RSRZ>2	OWAB(Å ²)	Q<0.9
1	A	354/360 (98%)	-1.10	0 100 100	9, 24, 46, 57	0
1	B	354/360 (98%)	-1.06	0 100 100	9, 25, 49, 59	0
1	C	354/360 (98%)	-1.09	0 100 100	9, 24, 46, 56	0
1	D	354/360 (98%)	-1.08	0 100 100	9, 25, 49, 59	0
All	All	1416/1440 (98%)	-1.08	0 100 100	9, 25, 48, 59	0

There are no RSRZ outliers to report.

6.2 Non-standard residues in protein, DNA, RNA chains [i](#)

There are no non-standard protein/DNA/RNA residues in this entry.

6.3 Carbohydrates [i](#)

There are no oligosaccharides in this entry.

6.4 Ligands [i](#)

In the following table, the Atoms column lists the number of modelled atoms in the group and the number defined in the chemical component dictionary. The B-factors column lists the minimum, median, 95th percentile and maximum values of B factors of atoms in the group. The column labelled ‘Q< 0.9’ lists the number of atoms with occupancy less than 0.9.

Mol	Type	Chain	Res	Atoms	RSCC	RSR	B-factors(Å ²)	Q<0.9
3	GOL	C	2302	6/6	0.97	0.07	39,42,42,43	0
2	MRS	B	1752	64/64	0.98	0.05	36,50,63,63	0
2	MRS	C	1753	64/64	0.98	0.05	39,50,65,65	0
2	MRS	D	1754	64/64	0.98	0.05	38,52,59,61	0

Continued on next page...

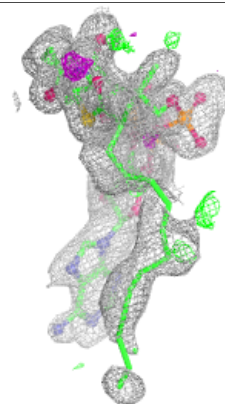
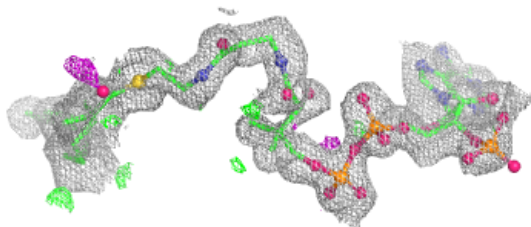
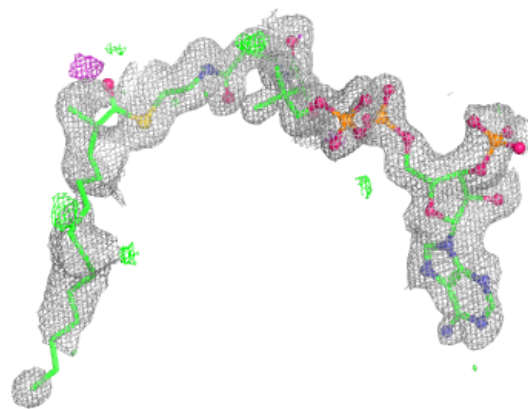
Continued from previous page...

Mol	Type	Chain	Res	Atoms	RSCC	RSR	B-factors(\AA^2)	Q<0.9
3	GOL	A	2306	6/6	0.98	0.05	38,42,42,45	0
2	MRS	A	1751	64/64	0.98	0.05	36,50,58,59	0
3	GOL	D	2303	6/6	0.98	0.04	30,34,35,35	0
3	GOL	B	2304	6/6	0.99	0.04	39,40,42,43	0

The following is a graphical depiction of the model fit to experimental electron density of all instances of the Ligand of Interest. In addition, ligands with molecular weight > 250 and outliers as shown on the geometry validation Tables will also be included. Each fit is shown from different orientation to approximate a three-dimensional view.

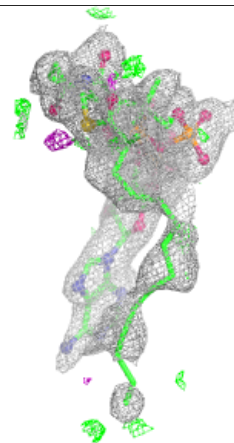
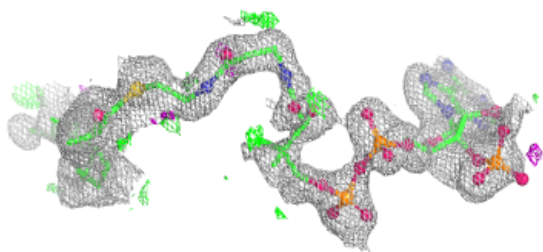
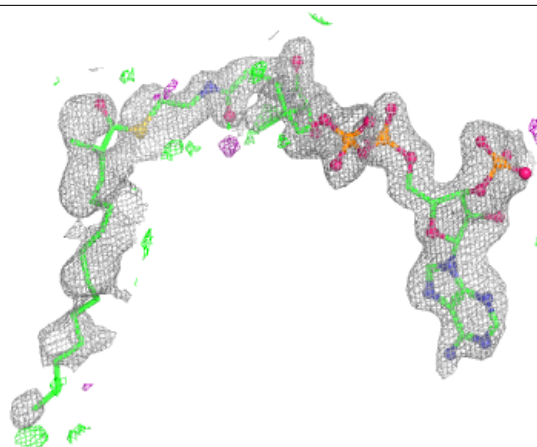
Electron density around MRS B 1752:

2mF_o-DF_c (at 0.7 rmsd) in gray
mF_o-DF_c (at 3 rmsd) in purple (negative)
and green (positive)



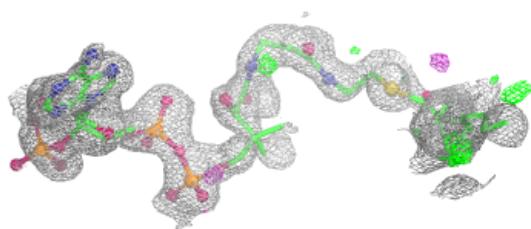
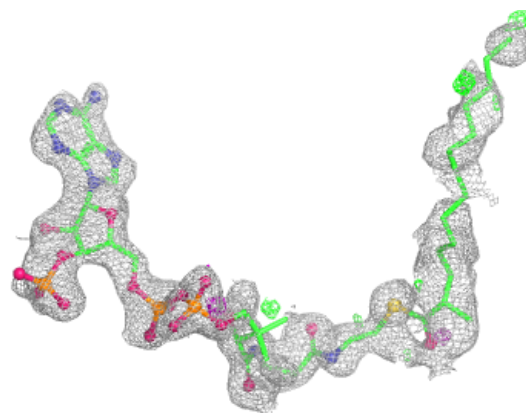
Electron density around MRS C 1753:

$2mF_o-DF_c$ (at 0.7 rmsd) in gray
 mF_o-DF_c (at 3 rmsd) in purple (negative)
and green (positive)



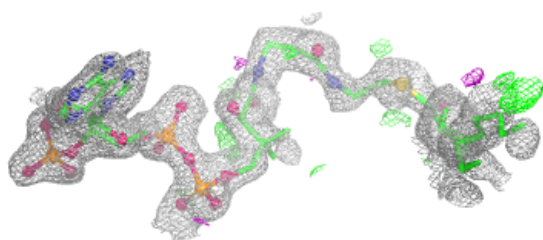
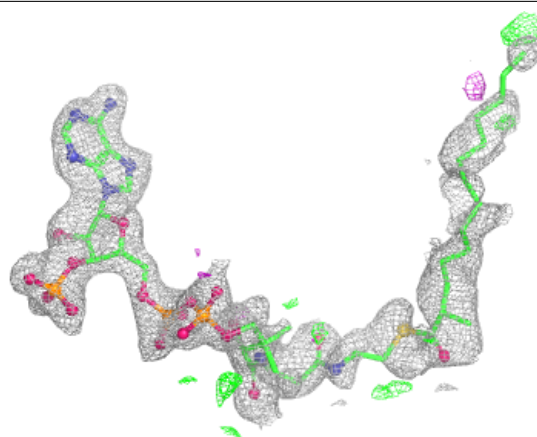
Electron density around MRS D 1754:

$2mF_o-DF_c$ (at 0.7 rmsd) in gray
 mF_o-DF_c (at 3 rmsd) in purple (negative)
and green (positive)



Electron density around MRS A 1751:

$2mF_o-DF_c$ (at 0.7 rmsd) in gray
 mF_o-DF_c (at 3 rmsd) in purple (negative)
and green (positive)



6.5 Other polymers [i](#)

There are no such residues in this entry.