



Full wwPDB X-ray Structure Validation Report ⓘ

Mar 9, 2026 – 07:15 AM UTC

PDB ID : 2Q5Q / pdb_00002q5q
Title : X-ray structure of phenylpyruvate decarboxylase in complex with 3-deaza-ThDP and 5-phenyl-2-oxo-valeric acid
Authors : Versees, W.; Spaepen, S.; Wood, M.D.; Leeper, F.J.; Vanderleyden, J.; Steyaert, J.
Deposited on : 2007-06-01
Resolution : 1.90 Å(reported)

This is a Full wwPDB X-ray Structure Validation Report for a publicly released PDB entry.

We welcome your comments at validation@mail.wwpdb.org

A user guide is available at

<https://www.wwpdb.org/validation/2017/XrayValidationReportHelp>

with specific help available everywhere you see the ⓘ symbol.

The types of validation reports are described at

<http://www.wwpdb.org/validation/2017/FAQs#types>.

The following versions of software and data (see [references ⓘ](#)) were used in the production of this report:

MolProbity	:	4-5-2 with Phenix2.0
Mogul	:	2022.3.0, CSD as543be (2022)
Xtriage (Phenix)	:	2.0
EDS	:	3.0
Buster-report	:	wwPDB partial adaption of 1.1.7 (2018)
Percentile statistics	:	20250101.v01 (using entries in the PDB archive January 1st 2025)
CCP4	:	9.0.010 (Gargrove)
Density-Fitness	:	1.0.12
Ideal geometry (proteins)	:	Engh & Huber (2001)
Ideal geometry (DNA, RNA)	:	Parkinson et al. (1996)
Validation Pipeline (wwPDB-VP)	:	2.49

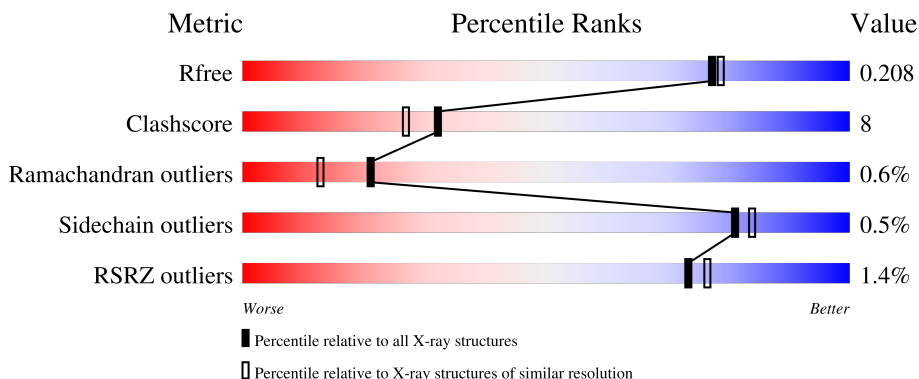
1 Overall quality at a glance

The following experimental techniques were used to determine the structure:

X-RAY DIFFRACTION

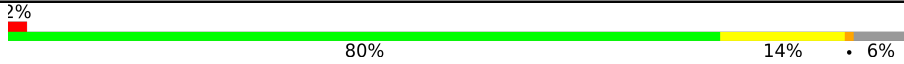
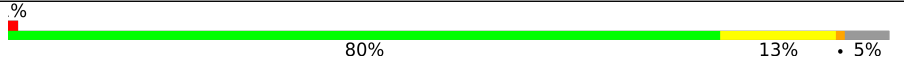
The reported resolution of this entry is 1.90 Å.

Percentile scores (ranging between 0-100) for global validation metrics of the entry are shown in the following graphic. The table shows the number of entries on which the scores are based.



Metric	Whole archive (#Entries)	Similar resolution (#Entries, resolution range(Å))
R_{free}	180053	7789 (1.90-1.90)
Clashscore	190562	8410 (1.90-1.90)
Ramachandran outliers	187476	8333 (1.90-1.90)
Sidechain outliers	187428	8333 (1.90-1.90)
RSRZ outliers	180081	7790 (1.90-1.90)

The table below summarises the geometric issues observed across the polymeric chains and their fit to the electron density. The red, orange, yellow and green segments of the lower bar indicate the fraction of residues that contain outliers for ≥ 3 , 2, 1 and 0 types of geometric quality criteria respectively. A grey segment represents the fraction of residues that are not modelled. The numeric value for each fraction is indicated below the corresponding segment, with a dot representing fractions $\leq 5\%$. The upper red bar (where present) indicates the fraction of residues that have poor fit to the electron density. The numeric value is given above the bar.

Mol	Chain	Length	Quality of chain
1	A	565	
1	B	565	

2 Entry composition

There are 7 unique types of molecules in this entry. The entry contains 9224 atoms, of which 0 are hydrogens and 0 are deuteriums.

In the tables below, the ZeroOcc column contains the number of atoms modelled with zero occupancy, the AltConf column contains the number of residues with at least one atom in alternate conformation and the Trace column contains the number of residues modelled with at most 2 atoms.

- Molecule 1 is a protein called Phenylpyruvate decarboxylase.

Mol	Chain	Residues	Atoms					ZeroOcc	AltConf	Trace
1	A	533	Total	C	N	O	S	0	6	0
			3979	2523	692	740	24			
1	B	535	Total	C	N	O	S	0	3	0
			3996	2533	702	738	23			

There are 44 discrepancies between the modelled and reference sequences:

Chain	Residue	Modelled	Actual	Comment	Reference
A	-19	MET	-	expression tag	UNP P51852
A	-18	GLY	-	expression tag	UNP P51852
A	-17	SER	-	expression tag	UNP P51852
A	-16	SER	-	expression tag	UNP P51852
A	-15	HIS	-	expression tag	UNP P51852
A	-14	HIS	-	expression tag	UNP P51852
A	-13	HIS	-	expression tag	UNP P51852
A	-12	HIS	-	expression tag	UNP P51852
A	-11	HIS	-	expression tag	UNP P51852
A	-10	HIS	-	expression tag	UNP P51852
A	-9	SER	-	expression tag	UNP P51852
A	-8	SER	-	expression tag	UNP P51852
A	-7	GLY	-	expression tag	UNP P51852
A	-6	LEU	-	expression tag	UNP P51852
A	-5	VAL	-	expression tag	UNP P51852
A	-4	PRO	-	expression tag	UNP P51852
A	-3	ARG	-	expression tag	UNP P51852
A	-2	GLY	-	expression tag	UNP P51852
A	-1	SER	-	expression tag	UNP P51852
A	0	HIS	-	expression tag	UNP P51852
A	155	GLN	LEU	expression tag	UNP P51852
A	327	ARG	GLY	SEE REMARK 999	UNP P51852
B	-19	MET	-	expression tag	UNP P51852
B	-18	GLY	-	expression tag	UNP P51852
B	-17	SER	-	expression tag	UNP P51852

Continued on next page...

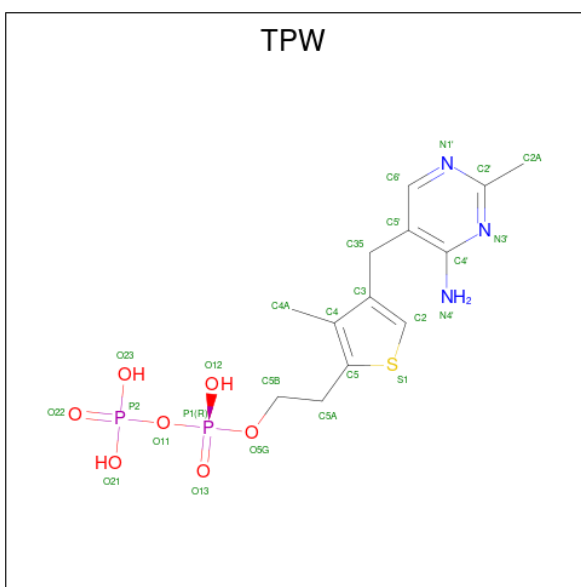
Continued from previous page...

Chain	Residue	Modelled	Actual	Comment	Reference
B	-16	SER	-	expression tag	UNP P51852
B	-15	HIS	-	expression tag	UNP P51852
B	-14	HIS	-	expression tag	UNP P51852
B	-13	HIS	-	expression tag	UNP P51852
B	-12	HIS	-	expression tag	UNP P51852
B	-11	HIS	-	expression tag	UNP P51852
B	-10	HIS	-	expression tag	UNP P51852
B	-9	SER	-	expression tag	UNP P51852
B	-8	SER	-	expression tag	UNP P51852
B	-7	GLY	-	expression tag	UNP P51852
B	-6	LEU	-	expression tag	UNP P51852
B	-5	VAL	-	expression tag	UNP P51852
B	-4	PRO	-	expression tag	UNP P51852
B	-3	ARG	-	expression tag	UNP P51852
B	-2	GLY	-	expression tag	UNP P51852
B	-1	SER	-	expression tag	UNP P51852
B	0	HIS	-	expression tag	UNP P51852
B	155	GLN	LEU	expression tag	UNP P51852
B	327	ARG	GLY	SEE REMARK 999	UNP P51852

- Molecule 2 is MAGNESIUM ION (CCD ID: MG) (formula: Mg).

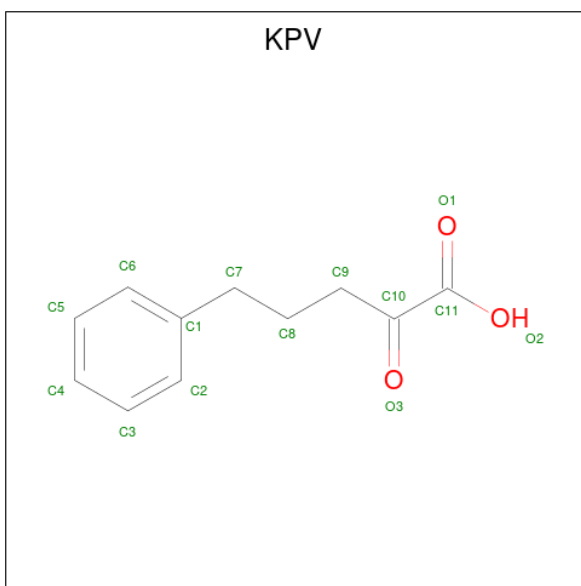
Mol	Chain	Residues	Atoms	ZeroOcc	AltConf
2	A	1	Total Mg 1 1	0	0
2	B	1	Total Mg 1 1	0	0

- Molecule 3 is 2-{4-[(4-AMINO-2-METHYLPYRIMIDIN-5-YL)METHYL]-3-METHYLT HIOPHEN-2-YL}ETHYL TRIHYDROGEN DIPHOSPHATE (CCD ID: TPW) (formula: C₁₃H₁₉N₃O₇P₂S).



Mol	Chain	Residues	Atoms						ZeroOcc	AltConf
3	A	1	Total 26	C 13	N 3	O 7	P 2	S 1	0	0
3	B	1	Total 26	C 13	N 3	O 7	P 2	S 1	0	0

- Molecule 4 is 5-PHENYL-2-KETO-VALERIC ACID (CCD ID: KPV) (formula: $C_{11}H_{12}O_3$).



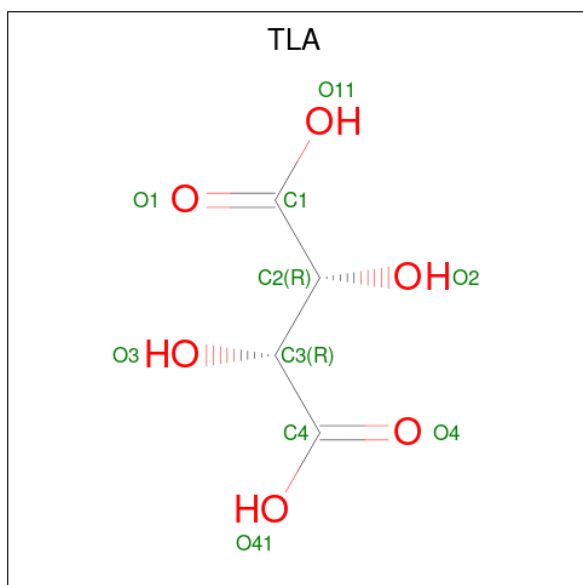
Mol	Chain	Residues	Atoms			ZeroOcc	AltConf
4	A	1	Total	C	O	0	0
			14	11	3		
4	A	1	Total	C	O	0	0
			14	11	3		

Continued on next page...

Continued from previous page...

Mol	Chain	Residues	Atoms			ZeroOcc	AltConf
4	B	1	Total	C	O	0	0
			14	11	3		
4	B	1	Total	C	O	0	0
			14	11	3		

- Molecule 5 is L(+)-TARTARIC ACID (CCD ID: TLA) (formula: $C_4H_6O_6$).



Mol	Chain	Residues	Atoms			ZeroOcc	AltConf
5	A	1	Total	C	O	0	0
			10	4	6		

- Molecule 6 is GLYCEROL (CCD ID: GOL) (formula: $C_3H_8O_3$).



Mol	Chain	Residues	Atoms			ZeroOcc	AltConf
6	A	1	Total	C	O	0	0
			6	3	3		
6	B	1	Total	C	O	0	0
			6	3	3		

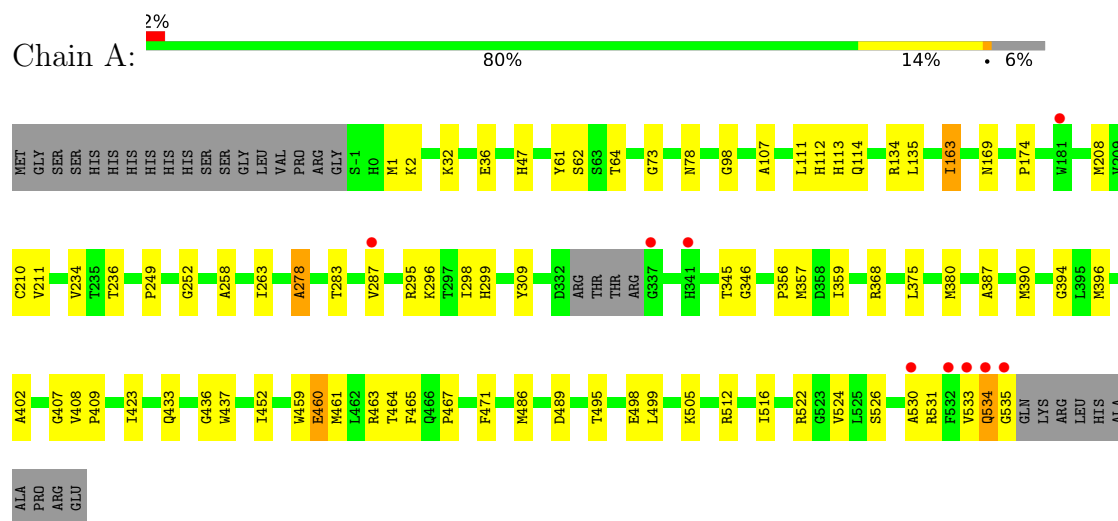
- Molecule 7 is water.

Mol	Chain	Residues	Atoms		ZeroOcc	AltConf
7	A	543	Total	O	0	0
			543	543		
7	B	574	Total	O	0	0
			574	574		

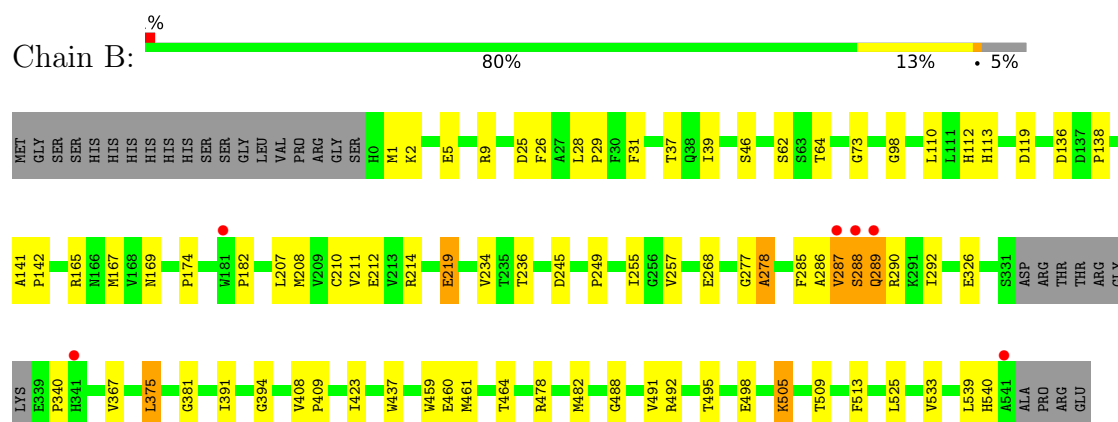
3 Residue-property plots [i](#)

These plots are drawn for all protein, RNA, DNA and oligosaccharide chains in the entry. The first graphic for a chain summarises the proportions of the various outlier classes displayed in the second graphic. The second graphic shows the sequence view annotated by issues in geometry and electron density. Residues are color-coded according to the number of geometric quality criteria for which they contain at least one outlier: green = 0, yellow = 1, orange = 2 and red = 3 or more. A red dot above a residue indicates a poor fit to the electron density ($RSRZ > 2$). Stretches of 2 or more consecutive residues without any outlier are shown as a green connector. Residues present in the sample, but not in the model, are shown in grey.

• Molecule 1: Phenylpyruvate decarboxylase



• Molecule 1: Phenylpyruvate decarboxylase



4 Data and refinement statistics

Property	Value	Source
Space group	C 2 2 21	Depositor
Cell constants a, b, c, α , β , γ	74.69Å 145.12Å 194.11Å 90.00° 90.00° 90.00°	Depositor
Resolution (Å)	34.90 – 1.90 34.90 – 1.90	Depositor EDS
% Data completeness (in resolution range)	92.5 (34.90-1.90) 92.5 (34.90-1.90)	Depositor EDS
R_{merge}	(Not available)	Depositor
R_{sym}	0.07	Depositor
$\langle I/\sigma(I) \rangle$ ¹	2.08 (at 1.89Å)	Xtriage
Refinement program	CNS 1.1	Depositor
R, R_{free}	0.163 , 0.206 0.164 , 0.208	Depositor DCC
R_{free} test set	3831 reflections (4.61%)	wwPDB-VP
Wilson B-factor (Å ²)	23.0	Xtriage
Anisotropy	0.505	Xtriage
Bulk solvent k_{sol} (e/Å ³), B_{sol} (Å ²)	0.37 , 60.8	EDS
L-test for twinning ²	$\langle L \rangle = 0.49$, $\langle L^2 \rangle = 0.33$	Xtriage
Estimated twinning fraction	No twinning to report.	Xtriage
F_o, F_c correlation	0.97	EDS
Total number of atoms	9224	wwPDB-VP
Average B, all atoms (Å ²)	26.0	wwPDB-VP

Xtriage's analysis on translational NCS is as follows: *The largest off-origin peak in the Patterson function is 4.54% of the height of the origin peak. No significant pseudotranslation is detected.*

¹Intensities estimated from amplitudes.

²Theoretical values of $\langle |L| \rangle$, $\langle L^2 \rangle$ for acentric reflections are 0.5, 0.333 respectively for untwinned datasets, and 0.375, 0.2 for perfectly twinned datasets.

5 Model quality

5.1 Standard geometry

Bond lengths and bond angles in the following residue types are not validated in this section: GOL, TLA, MG, TPW, KPV

The Z score for a bond length (or angle) is the number of standard deviations the observed value is removed from the expected value. A bond length (or angle) with $|Z| > 5$ is considered an outlier worth inspection. RMSZ is the root-mean-square of all Z scores of the bond lengths (or angles).

Mol	Chain	Bond lengths		Bond angles	
		RMSZ	$\# Z > 5$	RMSZ	$\# Z > 5$
1	A	0.50	0/4081	0.94	11/5550 (0.2%)
1	B	0.48	0/4087	0.94	10/5557 (0.2%)
All	All	0.49	0/8168	0.94	21/11107 (0.2%)

There are no bond length outliers.

All (21) bond angle outliers are listed below:

Mol	Chain	Res	Type	Atoms	Z	Observed(°)	Ideal(°)
1	B	459	TRP	N-CA-C	-10.46	94.96	109.71
1	A	459	TRP	N-CA-C	-8.93	97.11	109.71
1	B	278	ALA	N-CA-C	7.34	121.64	109.46
1	A	278	ALA	N-CA-C	6.98	121.69	109.96
1	B	236	THR	N-CA-C	-6.87	101.67	110.53
1	B	211	VAL	N-CA-C	6.43	122.72	109.34
1	A	163[A]	ILE	N-CA-C	6.42	114.51	108.15
1	A	163[B]	ILE	N-CA-C	6.42	114.51	108.15
1	B	98	GLY	N-CA-C	-6.40	104.35	112.54
1	A	211	VAL	N-CA-C	5.95	121.71	109.34
1	A	236	THR	N-CA-C	-5.91	102.91	110.53
1	A	460	GLU	N-CA-C	5.74	117.53	111.28
1	B	394	GLY	N-CA-C	-5.65	106.58	111.95
1	A	298	ILE	N-CA-C	-5.34	100.06	107.80
1	A	98	GLY	N-CA-C	-5.29	104.42	112.51
1	A	407	GLY	N-CA-C	5.28	125.70	113.18
1	B	219	GLU	N-CA-C	5.22	116.66	111.07
1	B	285	PHE	N-CA-C	5.21	121.18	114.56
1	B	460	GLU	N-CA-C	5.08	116.81	111.28
1	B	110	LEU	N-CA-C	-5.07	102.98	110.48
1	A	134	ARG	N-CA-C	-5.04	100.52	108.73

There are no chirality outliers.

There are no planarity outliers.

5.2 Too-close contacts

In the following table, the Non-H and H(model) columns list the number of non-hydrogen atoms and hydrogen atoms in the chain respectively. The H(added) column lists the number of hydrogen atoms added and optimized by MolProbity. The Clashes column lists the number of clashes within the asymmetric unit, whereas Symm-Clashes lists symmetry-related clashes.

Mol	Chain	Non-H	H(model)	H(added)	Clashes	Symm-Clashes
1	A	3979	0	3963	71	0
1	B	3996	0	3991	62	0
2	A	1	0	0	0	0
2	B	1	0	0	0	0
3	A	26	0	16	0	0
3	B	26	0	16	0	0
4	A	28	0	22	0	0
4	B	28	0	22	2	0
5	A	10	0	4	0	0
6	A	6	0	8	0	0
6	B	6	0	8	0	0
7	A	543	0	0	7	0
7	B	574	0	0	11	0
All	All	9224	0	8050	129	0

The all-atom clashscore is defined as the number of clashes found per 1000 atoms (including hydrogen atoms). The all-atom clashscore for this structure is 8.

All (129) close contacts within the same asymmetric unit are listed below, sorted by their clash magnitude.

Atom-1	Atom-2	Interatomic distance (Å)	Clash overlap (Å)
1:A:111:LEU:H	1:A:114:GLN:HE21	1.29	0.81
1:B:249:PRO:HB3	7:B:5361:HOH:O	1.82	0.80
1:B:257:VAL:HG12	1:B:289:GLN:HG2	1.64	0.79
1:B:288:SER:O	1:B:289:GLN:HB2	1.85	0.76
1:B:138:PRO:CD	1:B:167:MET:HE1	2.19	0.73
1:B:286:ALA:C	1:B:288:SER:H	1.96	0.73
1:B:326:GLU:HG3	7:B:5166:HOH:O	1.90	0.72
1:B:138:PRO:HD3	1:B:167:MET:HE1	1.70	0.72
1:B:340:PRO:HG3	7:B:5349:HOH:O	1.88	0.72
1:A:464:THR:CG2	1:A:533:VAL:HG21	2.21	0.71

Continued on next page...

Continued from previous page...

Atom-1	Atom-2	Interatomic distance (Å)	Clash overlap (Å)
1:A:533:VAL:C	1:A:535:GLY:H	1.98	0.71
1:B:2:LYS:HD2	1:B:169:ASN:HD22	1.57	0.70
1:A:249:PRO:HB3	7:A:5499:HOH:O	1.91	0.69
1:A:283:THR:HG22	4:B:5002:KPV:H6	1.75	0.69
1:A:2:LYS:HD2	1:A:169:ASN:HD22	1.60	0.65
1:A:295:ARG:HD2	7:A:5175:HOH:O	1.96	0.65
1:A:495:THR:OG1	1:A:498:GLU:HG3	1.95	0.65
1:A:210:CYS:HB3	1:A:278:ALA:HA	1.80	0.63
1:B:136:ASP:C	1:B:167:MET:HE2	2.24	0.63
1:B:5:GLU:HG3	1:B:39[B]:ILE:HD11	1.81	0.63
1:A:387:ALA:HA	1:A:390:MET:HE3	1.81	0.62
1:A:463[A]:ARG:HH12	1:A:522:ARG:CG	2.13	0.62
1:B:287:VAL:HG13	7:B:5375:HOH:O	1.98	0.62
1:B:119:ASP:HB2	7:B:5246:HOH:O	2.00	0.61
1:A:375:LEU:HD23	1:A:423:ILE:HD12	1.81	0.61
1:A:135:LEU:HD12	1:A:163[A]:ILE:HD12	1.83	0.60
1:A:287:VAL:HG22	1:A:287:VAL:O	2.01	0.59
1:B:268:GLU:HG2	1:B:292[A]:ILE:HD11	1.85	0.59
1:B:491:VAL:HG21	7:B:5216:HOH:O	2.03	0.58
1:A:463[A]:ARG:NH1	1:A:522:ARG:HD3	2.18	0.57
1:A:530:ALA:O	1:A:533:VAL:HG22	2.04	0.57
1:B:2:LYS:HE2	7:B:5540:HOH:O	2.03	0.57
1:A:368:ARG:NH1	7:A:5485:HOH:O	2.34	0.57
1:B:495:THR:OG1	1:B:498:GLU:HG3	2.05	0.56
1:B:288:SER:O	1:B:289:GLN:CB	2.54	0.56
1:B:289:GLN:O	1:B:290:ARG:HD3	2.06	0.56
1:B:210:CYS:HB3	1:B:278:ALA:HA	1.87	0.55
1:A:408:VAL:HB	1:A:409:PRO:HD3	1.89	0.55
1:B:286:ALA:C	1:B:288:SER:N	2.65	0.55
1:A:278:ALA:O	1:A:299:HIS:HE1	1.90	0.54
1:A:464:THR:HG21	1:A:533:VAL:HG21	1.88	0.54
1:A:252:GLY:HA3	1:A:263:ILE:CD1	2.38	0.54
1:A:135:LEU:HD12	1:A:163[A]:ILE:CD1	2.39	0.53
1:B:525:LEU:HD23	1:B:525:LEU:N	2.24	0.52
1:A:463[A]:ARG:NH1	1:A:522:ARG:HB3	2.25	0.52
1:A:533:VAL:C	1:A:535:GLY:N	2.66	0.52
1:A:2:LYS:HE3	7:A:5097:HOH:O	2.10	0.52
1:A:107:ALA:HB3	7:A:5195:HOH:O	2.09	0.52
1:A:463[A]:ARG:HH12	1:A:522:ARG:HD3	1.76	0.51
1:A:530:ALA:HB1	1:A:534:GLN:NE2	2.26	0.51
1:A:471:PHE:CE2	1:B:31:PHE:HB3	2.45	0.51

Continued on next page...

Continued from previous page...

Atom-1	Atom-2	Interatomic distance (Å)	Clash overlap (Å)
1:A:210:CYS:CB	1:A:278:ALA:HA	2.41	0.50
1:B:112:HIS:O	1:B:113:HIS:HB2	2.12	0.50
1:B:539:LEU:HB3	1:B:540:HIS:HD2	1.76	0.50
1:B:212:GLU:HB2	1:B:277:GLY:HA3	1.94	0.50
1:B:141:ALA:HB3	1:B:142:PRO:HD3	1.94	0.49
1:A:463[A]:ARG:HH12	1:A:522:ARG:CD	2.24	0.49
1:A:460:GLU:OE2	1:A:463[B]:ARG:HD2	2.12	0.49
1:B:1:MET:HE2	1:B:174:PRO:HG3	1.94	0.49
1:B:286:ALA:O	1:B:288:SER:N	2.41	0.49
1:A:380:MET:HE3	1:A:402:ALA:CB	2.42	0.49
1:A:357[A]:MET:HE3	1:A:526:SER:HB2	1.94	0.49
1:B:288:SER:HA	7:B:5472:HOH:O	2.12	0.49
1:A:359[A]:ILE:HD13	1:A:499:LEU:CD2	2.43	0.49
1:B:25[B]:ASP:OD1	1:B:26:PHE:N	2.46	0.48
1:B:255:ILE:O	1:B:287:VAL:HG11	2.13	0.48
1:B:1:MET:HE3	1:B:174:PRO:HA	1.95	0.48
1:B:37:THR:OG1	1:B:39[A]:ILE:HG12	2.12	0.48
1:A:2:LYS:HD2	1:A:169:ASN:ND2	2.27	0.48
1:A:208:MET:HA	1:A:234:VAL:O	2.14	0.48
1:A:464:THR:HG22	1:A:533:VAL:HG21	1.95	0.48
1:B:62:SER:HB2	1:B:64:THR:HG22	1.96	0.47
1:A:359[A]:ILE:HD13	1:A:499:LEU:HD21	1.96	0.47
1:B:525:LEU:HD23	1:B:525:LEU:H	1.79	0.47
1:A:533:VAL:O	1:A:535:GLY:N	2.47	0.47
1:B:375:LEU:HD22	1:B:423:ILE:HD12	1.96	0.47
1:A:375:LEU:HD12	1:A:394:GLY:C	2.40	0.47
1:A:463[A]:ARG:HH12	1:A:522:ARG:HG2	1.79	0.46
1:A:452[A]:ILE:CD1	1:A:516:ILE:HD12	2.45	0.46
1:A:489:ASP:CG	1:A:512:ARG:HD2	2.39	0.46
1:B:214:ARG:HG2	7:B:5015:HOH:O	2.15	0.46
1:B:488:GLY:HA3	1:B:513:PHE:CZ	2.51	0.46
1:B:138:PRO:CG	1:B:167:MET:HE1	2.45	0.46
1:B:478:ARG:HD3	1:B:492:ARG:NH2	2.31	0.46
1:B:138:PRO:HG3	1:B:167:MET:HE1	1.98	0.45
1:A:61:TYR:CE1	1:A:375:LEU:HD22	2.51	0.45
1:A:357[A]:MET:HE3	1:A:526:SER:HA	1.99	0.45
1:B:505:LYS:HE3	1:B:509:THR:OG1	2.16	0.45
1:B:464:THR:HG22	1:B:533:VAL:HG11	1.99	0.44
1:B:381:GLY:HA2	1:B:461:MET:HE3	1.99	0.44
1:A:461:MET:HE1	4:B:5002:KPV:H92	2.00	0.44
1:B:28:LEU:HB2	1:B:29:PRO:HD3	1.99	0.44

Continued on next page...

Continued from previous page...

Atom-1	Atom-2	Interatomic distance (Å)	Clash overlap (Å)
1:B:210:CYS:CB	1:B:278:ALA:HA	2.47	0.44
1:B:9:ARG:HG3	1:B:39[B]:ILE:HD13	1.99	0.44
1:A:112:HIS:O	1:A:113:HIS:HB2	2.18	0.44
1:A:433:GLN:HB3	1:B:46:SER:HB3	2.00	0.44
1:A:533:VAL:HG23	1:A:534:GLN:N	2.33	0.43
1:B:2:LYS:HD2	1:B:169:ASN:ND2	2.29	0.43
1:B:25[B]:ASP:OD2	1:B:112:HIS:NE2	2.46	0.43
1:A:32:LYS:HE3	1:A:36:GLU:OE2	2.18	0.43
1:A:47:HIS:CD2	1:A:78:ASN:HD21	2.37	0.43
1:B:367:VAL:HG11	1:B:391:ILE:HG21	1.99	0.42
1:B:257:VAL:HG22	1:B:287:VAL:HG12	2.02	0.42
1:B:290:ARG:HG3	1:B:290:ARG:HH11	1.84	0.42
1:A:62:SER:HB2	1:A:64:THR:HG22	2.02	0.42
1:B:28:LEU:HD23	1:B:28:LEU:HA	1.91	0.42
1:A:408:VAL:HG21	1:A:436:GLY:HA2	2.02	0.42
1:A:452[A]:ILE:HD11	1:A:516:ILE:HD12	2.01	0.41
1:B:208:MET:HA	1:B:234:VAL:O	2.19	0.41
1:A:1:MET:HE2	1:A:174:PRO:HG3	2.02	0.41
1:B:182:PRO:HA	7:B:5160:HOH:O	2.21	0.41
1:A:452[A]:ILE:HD13	1:A:516:ILE:HB	2.01	0.41
1:A:461:MET:HE2	1:A:461:MET:HB3	1.99	0.41
1:A:258:ALA:HA	1:A:531:ARG:HB2	2.03	0.41
1:A:345:THR:OG1	1:A:346:GLY:N	2.54	0.41
1:A:437:TRP:CD1	1:B:437:TRP:CD1	3.08	0.41
1:A:505:LYS:HD3	7:A:5459:HOH:O	2.21	0.41
1:B:408:VAL:HB	1:B:409:PRO:HD3	2.02	0.41
1:A:357[A]:MET:HE3	1:A:526:SER:CB	2.51	0.40
1:A:461:MET:O	1:A:465:PHE:HD2	2.04	0.40
1:A:486:MET:HG3	1:B:482:MET:CE	2.51	0.40
1:A:296:LYS:NZ	1:A:309:TYR:OH	2.54	0.40
1:A:356:PRO:HD3	1:A:524:VAL:HG12	2.03	0.40
1:A:375:LEU:HD21	1:A:396:MET:HE3	2.03	0.40
1:A:357[B]:MET:HG2	7:A:5171:HOH:O	2.21	0.40
1:B:214:ARG:HD2	1:B:219:GLU:OE2	2.22	0.40
1:B:245:ASP:HB3	7:B:5195:HOH:O	2.19	0.40

There are no symmetry-related clashes.

5.3 Torsion angles [i](#)

5.3.1 Protein backbone [i](#)

In the following table, the Percentiles column shows the percent Ramachandran outliers of the chain as a percentile score with respect to all X-ray entries followed by that with respect to entries of similar resolution.

The Analysed column shows the number of residues for which the backbone conformation was analysed, and the total number of residues.

Mol	Chain	Analysed	Favoured	Allowed	Outliers	Percentiles	
1	A	535/565 (95%)	523 (98%)	10 (2%)	2 (0%)	30	22
1	B	534/565 (94%)	520 (97%)	10 (2%)	4 (1%)	18	10
All	All	1069/1130 (95%)	1043 (98%)	20 (2%)	6 (1%)	21	13

All (6) Ramachandran outliers are listed below:

Mol	Chain	Res	Type
1	B	288	SER
1	B	289	GLN
1	A	534	GLN
1	B	287	VAL
1	A	73	GLY
1	B	73	GLY

5.3.2 Protein sidechains [i](#)

In the following table, the Percentiles column shows the percent sidechain outliers of the chain as a percentile score with respect to all X-ray entries followed by that with respect to entries of similar resolution.

The Analysed column shows the number of residues for which the sidechain conformation was analysed, and the total number of residues.

Mol	Chain	Analysed	Rotameric	Outliers	Percentiles	
1	A	399/426 (94%)	399 (100%)	0	100	100
1	B	399/426 (94%)	395 (99%)	4 (1%)	68	70
All	All	798/852 (94%)	794 (100%)	4 (0%)	81	84

All (4) residues with a non-rotameric sidechain are listed below:

Mol	Chain	Res	Type
1	B	165	ARG
1	B	207	LEU
1	B	375	LEU
1	B	505	LYS

Sometimes sidechains can be flipped to improve hydrogen bonding and reduce clashes. All (12) such sidechains are listed below:

Mol	Chain	Res	Type
1	A	114	GLN
1	A	155	GLN
1	A	169	ASN
1	A	299	HIS
1	A	415	GLN
1	A	534	GLN
1	B	169	ASN
1	B	341	HIS
1	B	441	ASN
1	B	534	GLN
1	B	536	GLN
1	B	540	HIS

5.3.3 RNA [i](#)

There are no RNA molecules in this entry.

5.4 Non-standard residues in protein, DNA, RNA chains [i](#)

There are no non-standard protein/DNA/RNA residues in this entry.

5.5 Carbohydrates [i](#)

There are no oligosaccharides in this entry.

5.6 Ligand geometry [i](#)

Of 11 ligands modelled in this entry, 2 are monoatomic - leaving 9 for Mogul analysis.

In the following table, the Counts columns list the number of bonds (or angles) for which Mogul statistics could be retrieved, the number of bonds (or angles) that are observed in the model and the number of bonds (or angles) that are defined in the Chemical Component Dictionary. The

Link column lists molecule types, if any, to which the group is linked. The Z score for a bond length (or angle) is the number of standard deviations the observed value is removed from the expected value. A bond length (or angle) with $|Z| > 2$ is considered an outlier worth inspection. RMSZ is the root-mean-square of all Z scores of the bond lengths (or angles).

Mol	Type	Chain	Res	Link	Bond lengths			Bond angles		
					Counts	RMSZ	# Z > 2	Counts	RMSZ	# Z > 2
4	KPV	B	5002	-	14,14,14	2.07	3 (21%)	17,17,17	1.24	2 (11%)
5	TLA	A	5007	-	9,9,9	0.95	0	12,12,12	1.18	2 (16%)
6	GOL	B	5005	-	5,5,5	0.53	0	5,5,5	0.93	0
4	KPV	B	5003	-	14,14,14	1.73	2 (14%)	17,17,17	1.48	4 (23%)
6	GOL	A	5006	-	5,5,5	0.57	0	5,5,5	0.91	0
4	KPV	A	5001	-	14,14,14	2.07	3 (21%)	17,17,17	1.27	4 (23%)
4	KPV	A	5004	-	14,14,14	1.79	2 (14%)	17,17,17	1.48	4 (23%)
3	TPW	B	2001	2	25,27,27	2.29	13 (52%)	37,40,40	3.06	13 (35%)
3	TPW	A	2002	2	25,27,27	2.01	5 (20%)	37,40,40	3.06	14 (37%)

In the following table, the Chirals column lists the number of chiral outliers, the number of chiral centers analysed, the number of these observed in the model and the number defined in the Chemical Component Dictionary. Similar counts are reported in the Torsion and Rings columns. '-' means no outliers of that kind were identified.

Mol	Type	Chain	Res	Link	Chirals	Torsions	Rings
4	KPV	B	5002	-	-	1/10/10/10	0/1/1/1
5	TLA	A	5007	-	-	0/12/12/12	-
6	GOL	B	5005	-	-	0/4/4/4	-
4	KPV	B	5003	-	-	3/10/10/10	0/1/1/1
6	GOL	A	5006	-	-	0/4/4/4	-
4	KPV	A	5001	-	-	2/10/10/10	0/1/1/1
4	KPV	A	5004	-	-	3/10/10/10	0/1/1/1
3	TPW	B	2001	2	-	1/17/17/17	0/2/2/2
3	TPW	A	2002	2	-	1/17/17/17	0/2/2/2

All (28) bond length outliers are listed below:

Mol	Chain	Res	Type	Atoms	Z	Observed(Å)	Ideal(Å)
3	A	2002	TPW	P1-O11	5.72	1.65	1.59
3	B	2001	TPW	P1-O11	4.99	1.64	1.59
4	B	5002	KPV	O1-C11	4.84	1.34	1.22
4	A	5001	KPV	O1-C11	4.82	1.34	1.22
4	A	5004	KPV	O1-C11	4.54	1.33	1.22
4	B	5003	KPV	O1-C11	4.18	1.32	1.22

Continued on next page...

Continued from previous page...

Mol	Chain	Res	Type	Atoms	Z	Observed(Å)	Ideal(Å)
3	A	2002	TPW	C35-C3	4.04	1.58	1.51
3	B	2001	TPW	C35-C3	4.04	1.58	1.51
3	A	2002	TPW	C35-C5'	3.62	1.56	1.51
3	B	2001	TPW	C4'-N3'	3.57	1.39	1.35
3	B	2001	TPW	C2-C3	-3.52	1.33	1.36
4	A	5001	KPV	C10-C11	-3.11	1.48	1.53
4	B	5002	KPV	O2-C11	-3.10	1.22	1.30
4	A	5001	KPV	O2-C11	-2.88	1.22	1.30
3	B	2001	TPW	C35-C5'	2.71	1.55	1.51
3	B	2001	TPW	C4'-N4'	2.69	1.41	1.34
3	B	2001	TPW	C4A-C4	2.67	1.56	1.50
4	B	5003	KPV	O2-C11	-2.67	1.23	1.30
4	B	5002	KPV	C10-C11	-2.61	1.49	1.53
3	B	2001	TPW	C5A-C5	-2.47	1.45	1.50
4	A	5004	KPV	O2-C11	-2.41	1.24	1.30
3	B	2001	TPW	C6'-C5'	2.32	1.42	1.37
3	A	2002	TPW	C6'-C5'	2.14	1.42	1.37
3	B	2001	TPW	C6'-N1'	2.11	1.38	1.34
3	B	2001	TPW	C5'-C4'	2.07	1.46	1.42
3	A	2002	TPW	C4'-N4'	2.04	1.39	1.34
3	B	2001	TPW	P1-O12	-2.03	1.45	1.55
3	B	2001	TPW	P2-O22	2.01	1.56	1.50

All (43) bond angle outliers are listed below:

Mol	Chain	Res	Type	Atoms	Z	Observed(°)	Ideal(°)
3	B	2001	TPW	C2-C3-C4	9.87	118.88	111.92
3	A	2002	TPW	C2-C3-C4	9.76	118.80	111.92
3	A	2002	TPW	C3-C2-S1	-8.56	103.83	113.46
3	B	2001	TPW	C3-C2-S1	-8.52	103.87	113.46
3	A	2002	TPW	C2-S1-C5	7.25	99.26	92.41
3	B	2001	TPW	C2-S1-C5	6.91	98.94	92.41
3	A	2002	TPW	C5-C4-C3	4.89	116.05	112.50
3	B	2001	TPW	C35-C3-C2	-4.76	118.13	124.23
3	B	2001	TPW	C5-C4-C3	4.66	115.88	112.50
3	A	2002	TPW	C35-C3-C2	-4.58	118.36	124.23
3	B	2001	TPW	C6'-N1'-C2'	3.51	121.83	116.07
4	A	5004	KPV	C8-C9-C10	-3.45	106.86	113.58
4	B	5003	KPV	C8-C9-C10	-3.11	107.52	113.58
3	A	2002	TPW	C4-C5-S1	-3.10	102.07	110.15
3	A	2002	TPW	C6'-N1'-C2'	3.01	121.01	116.07
3	B	2001	TPW	C4-C5-S1	-2.98	102.37	110.15

Continued on next page...

Continued from previous page...

Mol	Chain	Res	Type	Atoms	Z	Observed(°)	Ideal(°)
4	B	5003	KPV	O2-C11-C10	2.77	121.27	113.59
3	B	2001	TPW	N1'-C2'-N3'	-2.69	121.06	125.53
3	A	2002	TPW	N1'-C2'-N3'	-2.64	121.15	125.53
4	A	5004	KPV	O2-C11-C10	2.60	120.81	113.59
3	A	2002	TPW	C2'-N3'-C4'	2.59	122.08	118.10
4	B	5003	KPV	C9-C10-C11	2.55	120.20	115.86
4	A	5001	KPV	O2-C11-C10	2.52	120.59	113.59
4	B	5002	KPV	O2-C11-C10	2.51	120.55	113.59
4	B	5003	KPV	O1-C11-C10	-2.45	118.76	121.81
3	B	2001	TPW	C5'-C6'-N1'	-2.45	119.84	123.83
3	A	2002	TPW	O21-P2-O11	2.40	112.69	104.64
3	A	2002	TPW	C5'-C6'-N1'	-2.39	119.94	123.83
3	B	2001	TPW	O21-P2-O11	2.30	112.36	104.64
4	A	5004	KPV	O1-C11-C10	-2.28	118.97	121.81
4	A	5001	KPV	O1-C11-C10	-2.28	118.97	121.81
4	B	5002	KPV	C9-C10-C11	2.28	119.73	115.86
3	A	2002	TPW	C2A-C2'-N1'	2.27	119.62	117.20
4	A	5001	KPV	C9-C10-C11	2.23	119.65	115.86
5	A	5007	TLA	O41-C4-C3	2.21	119.45	113.31
3	A	2002	TPW	C5A-C5-S1	2.18	126.01	120.90
3	B	2001	TPW	C5A-C5-S1	2.16	125.97	120.90
4	A	5004	KPV	C9-C10-C11	2.12	119.47	115.86
5	A	5007	TLA	O11-C1-C2	2.08	119.10	113.31
3	B	2001	TPW	P1-O5G-C5B	-2.08	111.37	121.26
3	B	2001	TPW	C2'-N3'-C4'	2.04	121.23	118.10
3	A	2002	TPW	P1-O5G-C5B	-2.04	111.57	121.26
4	A	5001	KPV	C8-C9-C10	-2.01	109.67	113.58

There are no chirality outliers.

All (11) torsion outliers are listed below:

Mol	Chain	Res	Type	Atoms
3	B	2001	TPW	P2-O11-P1-O5G
4	A	5004	KPV	C11-C10-C9-C8
4	B	5003	KPV	C11-C10-C9-C8
4	B	5002	KPV	C1-C7-C8-C9
4	A	5001	KPV	C1-C7-C8-C9
3	A	2002	TPW	P2-O11-P1-O5G
4	A	5001	KPV	O3-C10-C11-O2
4	A	5004	KPV	C6-C1-C7-C8
4	A	5004	KPV	C2-C1-C7-C8
4	B	5003	KPV	C2-C1-C7-C8

Continued on next page...

Continued from previous page...

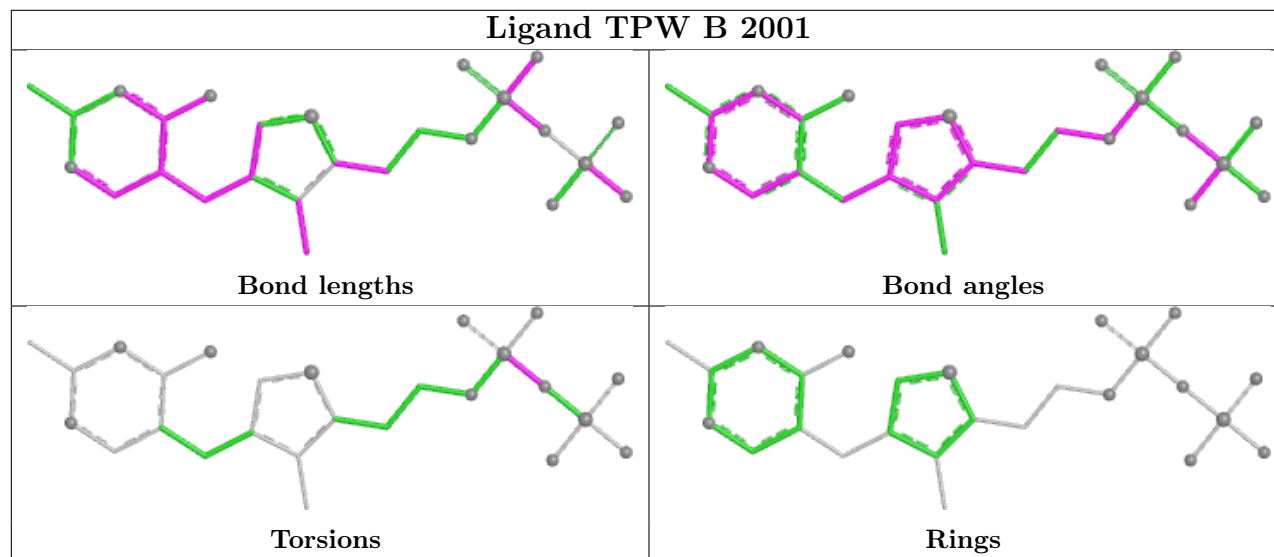
Mol	Chain	Res	Type	Atoms
4	B	5003	KPV	C6-C1-C7-C8

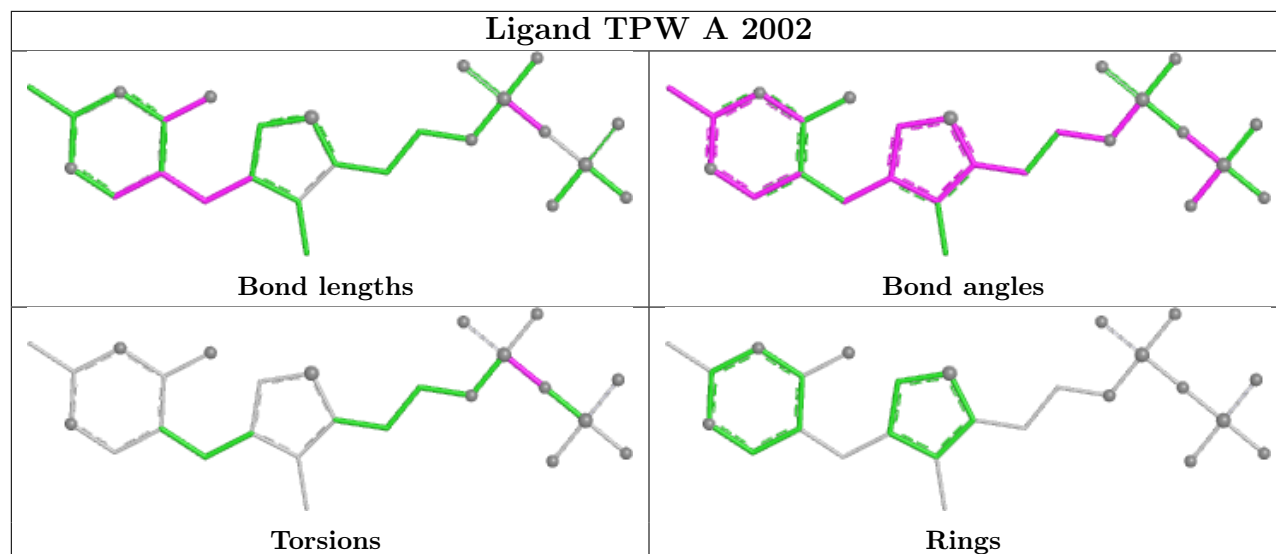
There are no ring outliers.

1 monomer is involved in 2 short contacts:

Mol	Chain	Res	Type	Clashes	Symm-Clashes
4	B	5002	KPV	2	0

The following is a two-dimensional graphical depiction of Mogul quality analysis of bond lengths, bond angles, torsion angles, and ring geometry for all instances of the Ligand of Interest. In addition, ligands with molecular weight > 250 and outliers as shown on the validation Tables will also be included. For torsion angles, if less than 5% of the Mogul distribution of torsion angles is within 10 degrees of the torsion angle in question, then that torsion angle is considered an outlier. Any bond that is central to one or more torsion angles identified as an outlier by Mogul will be highlighted in the graph. For rings, the root-mean-square deviation (RMSD) between the ring in question and similar rings identified by Mogul is calculated over all ring torsion angles. If the average RMSD is greater than 60 degrees and the minimal RMSD between the ring in question and any Mogul-identified rings is also greater than 60 degrees, then that ring is considered an outlier. The outliers are highlighted in purple. The color gray indicates Mogul did not find sufficient equivalents in the CSD to analyse the geometry.





5.7 Other polymers [i](#)

There are no such residues in this entry.

5.8 Polymer linkage issues [i](#)

There are no chain breaks in this entry.

6 Fit of model and data [i](#)

6.1 Protein, DNA and RNA chains [i](#)

In the following table, the column labelled ‘#RSRZ > 2’ contains the number (and percentage) of RSRZ outliers, followed by percent RSRZ outliers for the chain as percentile scores relative to all X-ray entries and entries of similar resolution. The OWAB column contains the minimum, median, 95th percentile and maximum values of the occupancy-weighted average B-factor per residue. The column labelled ‘Q < 0.9’ lists the number of (and percentage) of residues with an average occupancy less than 0.9.

Mol	Chain	Analysed	<RSRZ>	#RSRZ>2	OWAB(Å ²)	Q<0.9
1	A	533/565 (94%)	-0.32	9 (1%) 69 72	10, 23, 40, 72	6 (1%)
1	B	535/565 (94%)	-0.32	6 (1%) 78 80	15, 23, 38, 65	3 (0%)
All	All	1068/1130 (94%)	-0.32	15 (1%) 73 76	10, 23, 40, 72	9 (0%)

All (15) RSRZ outliers are listed below:

Mol	Chain	Res	Type	RSRZ
1	A	535	GLY	5.3
1	A	533	VAL	3.9
1	A	532	PHE	3.5
1	A	337	GLY	3.4
1	A	530	ALA	3.3
1	A	181	TRP	3.3
1	A	287	VAL	2.8
1	B	341	HIS	2.7
1	B	289	GLN	2.5
1	B	287	VAL	2.5
1	A	534	GLN	2.5
1	B	288	SER	2.4
1	A	341	HIS	2.2
1	B	541	ALA	2.2
1	B	181	TRP	2.1

6.2 Non-standard residues in protein, DNA, RNA chains [i](#)

There are no non-standard protein/DNA/RNA residues in this entry.

6.3 Carbohydrates [i](#)

There are no oligosaccharides in this entry.

6.4 Ligands ⓘ

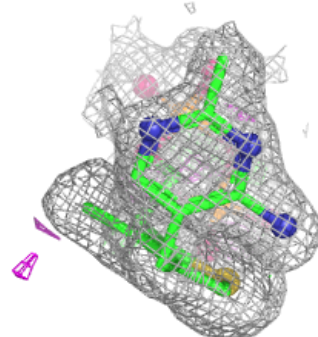
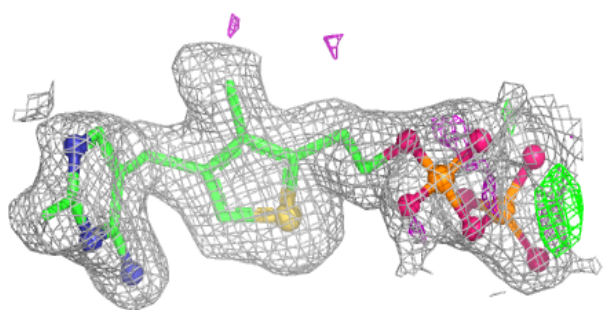
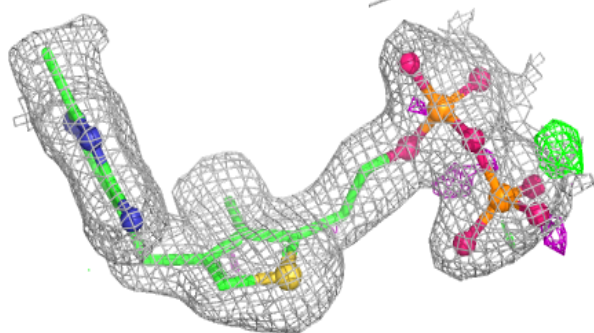
In the following table, the Atoms column lists the number of modelled atoms in the group and the number defined in the chemical component dictionary. The B-factors column lists the minimum, median, 95th percentile and maximum values of B factors of atoms in the group. The column labelled 'Q< 0.9' lists the number of atoms with occupancy less than 0.9.

Mol	Type	Chain	Res	Atoms	RSCC	RSR	B-factors(Å ²)	Q<0.9
5	TLA	A	5007	10/10	0.87	0.11	42,47,48,48	0
4	KPV	B	5002	14/14	0.88	0.12	39,43,44,45	0
4	KPV	A	5001	14/14	0.91	0.09	25,29,31,32	0
4	KPV	A	5004	14/14	0.95	0.06	18,21,24,25	0
6	GOL	A	5006	6/6	0.95	0.08	24,25,26,30	0
4	KPV	B	5003	14/14	0.96	0.06	18,22,24,24	0
6	GOL	B	5005	6/6	0.96	0.06	23,27,28,28	0
3	TPW	A	2002	26/26	0.97	0.07	14,21,26,29	0
2	MG	A	4002	1/1	0.97	0.03	23,23,23,23	0
2	MG	B	4001	1/1	0.98	0.02	20,20,20,20	0
3	TPW	B	2001	26/26	0.99	0.04	12,16,20,22	0

The following is a graphical depiction of the model fit to experimental electron density of all instances of the Ligand of Interest. In addition, ligands with molecular weight > 250 and outliers as shown on the geometry validation Tables will also be included. Each fit is shown from different orientation to approximate a three-dimensional view.

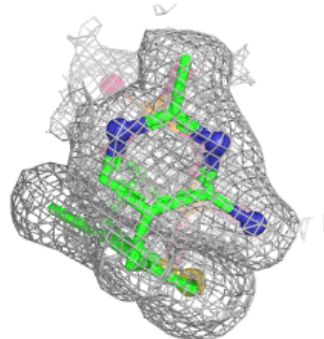
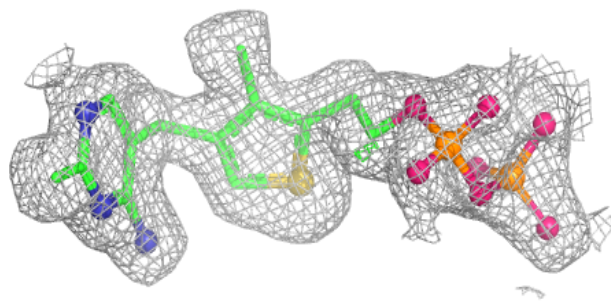
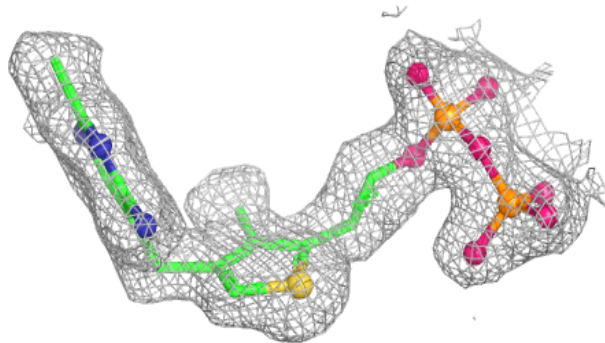
Electron density around TPW A 2002:

2mF_o-DF_c (at 0.7 rmsd) in gray
mF_o-DF_c (at 3 rmsd) in purple (negative)
and green (positive)



Electron density around TPW B 2001:

$2mF_o-DF_c$ (at 0.7 rmsd) in gray
 mF_o-DF_c (at 3 rmsd) in purple (negative)
and green (positive)



6.5 Other polymers [i](#)

There are no such residues in this entry.