



Full wwPDB X-ray Structure Validation Report ⓘ

Mar 17, 2026 – 10:49 PM UTC

PDB ID : 2QWO / pdb_00002qwo
Title : Crystal structure of disulfide-bond-crosslinked complex of bovine hsc70 (1-394aa)R171C and bovine Auxilin (810-910aa)D876C in the ADP*Pi form #1
Authors : Jiang, J.; Maes, E.G.; Wang, L.; Taylor, A.B.; Hinck, A.P.; Lafer, E.M.; Sousa, R.
Deposited on : 2007-08-10
Resolution : 1.70 Å(reported)

This is a Full wwPDB X-ray Structure Validation Report for a publicly released PDB entry.

We welcome your comments at validation@mail.wwpdb.org

A user guide is available at

<https://www.wwpdb.org/validation/2017/XrayValidationReportHelp>

with specific help available everywhere you see the ⓘ symbol.

The types of validation reports are described at

<http://www.wwpdb.org/validation/2017/FAQs#types>.

The following versions of software and data (see [references](#) ①) were used in the production of this report:

MolProbity	:	4-5-2 with Phenix2.0
Mogul	:	2022.3.0, CSD as543be (2022)
Xtriage (Phenix)	:	2.0
EDS	:	3.0
Buster-report	:	wwPDB partial adaption of 1.1.7 (2018)
Percentile statistics	:	20250101.v01 (using entries in the PDB archive January 1st 2025)
CCP4	:	9.0.010 (Gargrove)
Density-Fitness	:	1.0.12
Ideal geometry (proteins)	:	Engh & Huber (2001)
Ideal geometry (DNA, RNA)	:	Parkinson et al. (1996)
Validation Pipeline (wwPDB-VP)	:	2.49

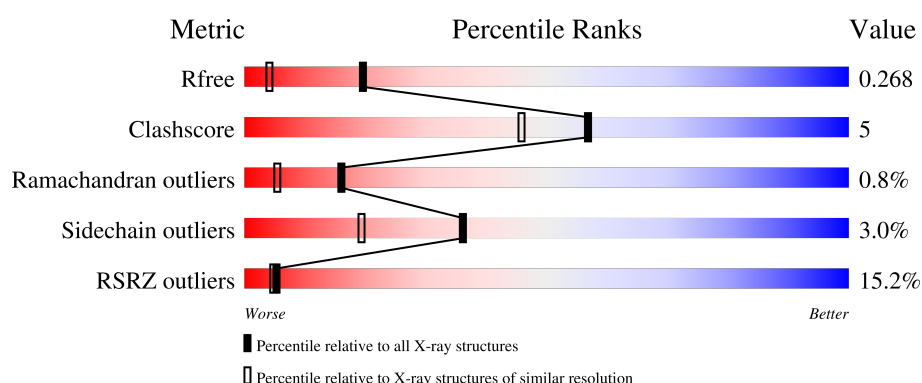
1 Overall quality at a glance

The following experimental techniques were used to determine the structure:

X-RAY DIFFRACTION

The reported resolution of this entry is 1.70 Å.

Percentile scores (ranging between 0-100) for global validation metrics of the entry are shown in the following graphic. The table shows the number of entries on which the scores are based.



Metric	Whole archive (#Entries)	Similar resolution (#Entries, resolution range(Å))
R_{free}	180053	5551 (1.70-1.70)
Clashscore	190562	5924 (1.70-1.70)
Ramachandran outliers	187476	5846 (1.70-1.70)
Sidechain outliers	187428	5846 (1.70-1.70)
RSRZ outliers	180081	5554 (1.70-1.70)

The table below summarises the geometric issues observed across the polymeric chains and their fit to the electron density. The red, orange, yellow and green segments of the lower bar indicate the fraction of residues that contain outliers for ≥ 3 , 2, 1 and 0 types of geometric quality criteria respectively. A grey segment represents the fraction of residues that are not modelled. The numeric value for each fraction is indicated below the corresponding segment, with a dot representing fractions $\leq 5\%$. The upper red bar (where present) indicates the fraction of residues that have poor fit to the electron density. The numeric value is given above the bar.

Mol	Chain	Length	Quality of chain
1	A	394	<div> <div>17%</div> <div>90%</div> <div>6%</div> <div>...</div> </div>
2	B	92	<div> <div>8%</div> <div>87%</div> <div>11%</div> <div>.</div> </div>

The following table lists non-polymeric compounds, carbohydrate monomers and non-standard residues in protein, DNA, RNA chains that are outliers for geometric or electron-density-fit criteria:

Mol	Type	Chain	Res	Chirality	Geometry	Clashes	Electron density
7	ACY	A	1022	-	-	X	-

2 Entry composition

There are 9 unique types of molecules in this entry. The entry contains 4144 atoms, of which 0 are hydrogens and 0 are deuteriums.

In the tables below, the ZeroOcc column contains the number of atoms modelled with zero occupancy, the AltConf column contains the number of residues with at least one atom in alternate conformation and the Trace column contains the number of residues modelled with at most 2 atoms.

- Molecule 1 is a protein called Heat shock cognate 71 kDa protein.

Mol	Chain	Residues	Atoms					ZeroOcc	AltConf	Trace
1	A	387	Total	C	N	O	S	0	0	0
			2991	1874	523	585	9			

There is a discrepancy between the modelled and reference sequences:

Chain	Residue	Modelled	Actual	Comment	Reference
A	171	CYS	ARG	engineered mutation	UNP P19120

- Molecule 2 is a protein called Putative tyrosine-protein phosphatase auxilin.

Mol	Chain	Residues	Atoms					ZeroOcc	AltConf	Trace
2	B	92	Total	C	N	O	S	0	0	0
			754	488	126	135	5			

There is a discrepancy between the modelled and reference sequences:

Chain	Residue	Modelled	Actual	Comment	Reference
B	876	CYS	ASP	engineered mutation	UNP Q27974

- Molecule 3 is PHOSPHATE ION (CCD ID: PO4) (formula: O₄P).



Mol	Chain	Residues	Atoms			ZeroOcc	AltConf
3	A	1	Total	O	P	0	0
			5	4	1		

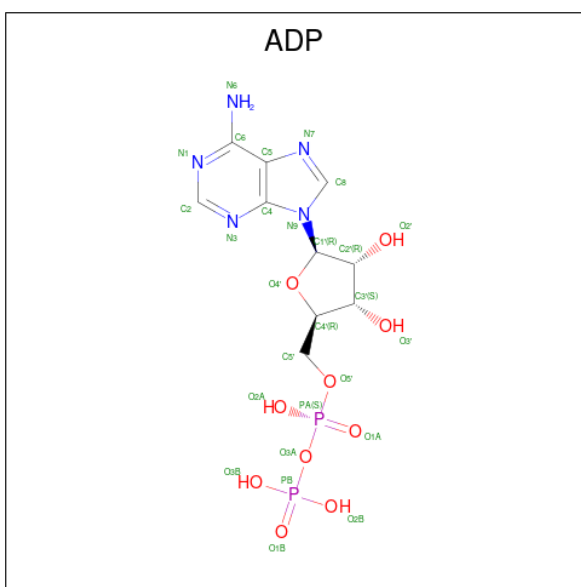
- Molecule 4 is SODIUM ION (CCD ID: NA) (formula: Na).

Mol	Chain	Residues	Atoms		ZeroOcc	AltConf
4	A	2	Total	Na	0	0
			2	2		

- Molecule 5 is MAGNESIUM ION (CCD ID: MG) (formula: Mg).

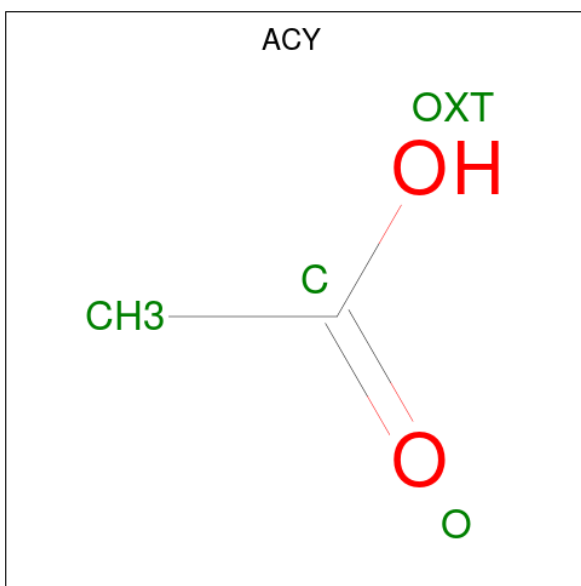
Mol	Chain	Residues	Atoms		ZeroOcc	AltConf
5	A	1	Total	Mg	0	0
			1	1		

- Molecule 6 is ADENOSINE-5'-DIPHOSPHATE (CCD ID: ADP) (formula: C₁₀H₁₅N₅O₁₀P₂).



Mol	Chain	Residues	Atoms					ZeroOcc	AltConf
6	A	1	Total	C	N	O	P	0	0
			27	10	5	10	2		

- Molecule 7 is ACETIC ACID (CCD ID: ACY) (formula: $\text{C}_2\text{H}_4\text{O}_2$).



Mol	Chain	Residues	Atoms			ZeroOcc	AltConf
7	A	1	Total	C	O	0	0
			4	2	2		

- Molecule 8 is GLYCEROL (CCD ID: GOL) (formula: $\text{C}_3\text{H}_8\text{O}_3$).



Mol	Chain	Residues	Atoms			ZeroOcc	AltConf
8	A	1	Total	C	O	0	0
			6	3	3		
8	A	1	Total	C	O	0	0
			6	3	3		

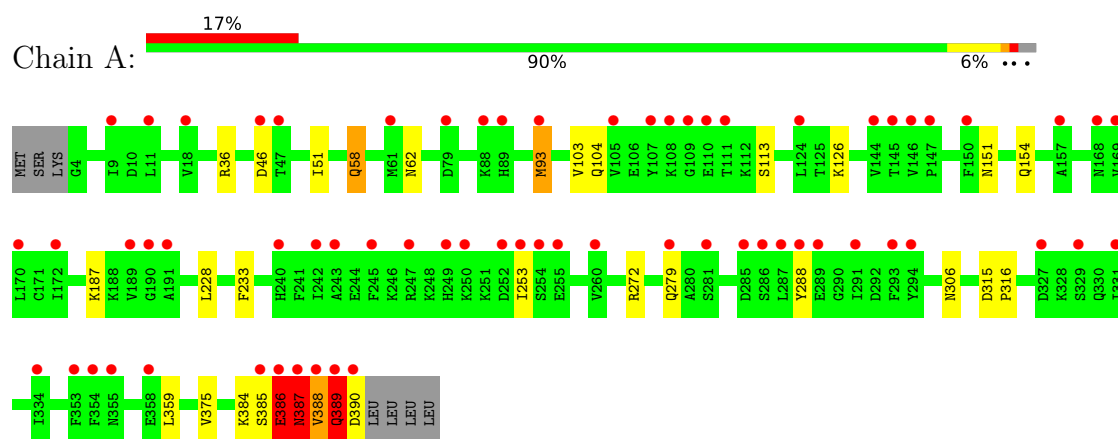
- Molecule 9 is water.

Mol	Chain	Residues	Atoms		ZeroOcc	AltConf
9	A	287	Total	O	0	0
			287	287		
9	B	61	Total	O	0	0
			61	61		

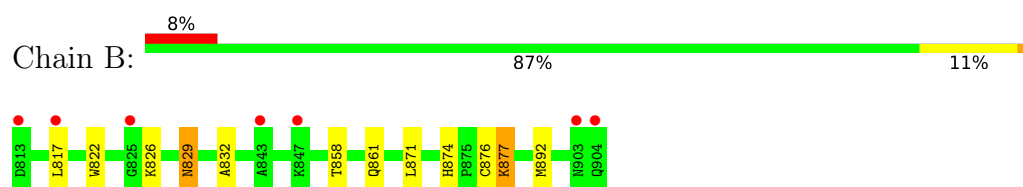
3 Residue-property plots [i](#)

These plots are drawn for all protein, RNA, DNA and oligosaccharide chains in the entry. The first graphic for a chain summarises the proportions of the various outlier classes displayed in the second graphic. The second graphic shows the sequence view annotated by issues in geometry and electron density. Residues are color-coded according to the number of geometric quality criteria for which they contain at least one outlier: green = 0, yellow = 1, orange = 2 and red = 3 or more. A red dot above a residue indicates a poor fit to the electron density ($RSRZ > 2$). Stretches of 2 or more consecutive residues without any outlier are shown as a green connector. Residues present in the sample, but not in the model, are shown in grey.

- Molecule 1: Heat shock cognate 71 kDa protein



- Molecule 2: Putative tyrosine-protein phosphatase auxilin



4 Data and refinement statistics

Property	Value	Source
Space group	P 21 21 21	Depositor
Cell constants a, b, c, α , β , γ	38.70Å 58.54Å 226.24Å 90.00° 90.00° 90.00°	Depositor
Resolution (Å)	40.69 – 1.70 40.69 – 1.70	Depositor EDS
% Data completeness (in resolution range)	98.0 (40.69-1.70) 98.0 (40.69-1.70)	Depositor EDS
R_{merge}	0.06	Depositor
R_{sym}	(Not available)	Depositor
$\langle I/\sigma(I) \rangle$ ¹	3.67 (at 1.70Å)	Xtriage
Refinement program	REFMAC 5.2.0019	Depositor
R, R_{free}	0.193 , 0.222 0.254 , 0.268	Depositor DCC
R_{free} test set	2861 reflections (4.97%)	wwPDB-VP
Wilson B-factor (Å ²)	24.7	Xtriage
Anisotropy	0.062	Xtriage
Bulk solvent k_{sol} (e/Å ³), B_{sol} (Å ²)	0.34 , 31.3	EDS
L-test for twinning ²	$\langle L \rangle = 0.47$, $\langle L^2 \rangle = 0.30$	Xtriage
Estimated twinning fraction	No twinning to report.	Xtriage
F_o, F_c correlation	0.94	EDS
Total number of atoms	4144	wwPDB-VP
Average B, all atoms (Å ²)	28.0	wwPDB-VP

Xtriage's analysis on translational NCS is as follows: *The largest off-origin peak in the Patterson function is 5.17% of the height of the origin peak. No significant pseudotranslation is detected.*

¹Intensities estimated from amplitudes.

²Theoretical values of $\langle |L| \rangle$, $\langle L^2 \rangle$ for acentric reflections are 0.5, 0.333 respectively for untwinned datasets, and 0.375, 0.2 for perfectly twinned datasets.

5 Model quality [i](#)

5.1 Standard geometry [i](#)

Bond lengths and bond angles in the following residue types are not validated in this section: PO4, ADP, ACY, GOL, NA, MG

The Z score for a bond length (or angle) is the number of standard deviations the observed value is removed from the expected value. A bond length (or angle) with $|Z| > 5$ is considered an outlier worth inspection. RMSZ is the root-mean-square of all Z scores of the bond lengths (or angles).

Mol	Chain	Bond lengths		Bond angles	
		RMSZ	$\# Z > 5$	RMSZ	$\# Z > 5$
1	A	0.72	1/3037 (0.0%)	0.80	0/4102
2	B	0.55	0/773	0.73	0/1046
All	All	0.69	1/3810 (0.0%)	0.79	0/5148

All (1) bond length outliers are listed below:

Mol	Chain	Res	Type	Atoms	Z	Observed(Å)	Ideal(Å)
1	A	46	ASP	CG-OD2	11.27	1.46	1.25

There are no bond angle outliers.

There are no chirality outliers.

There are no planarity outliers.

5.2 Too-close contacts [i](#)

In the following table, the Non-H and H(model) columns list the number of non-hydrogen atoms and hydrogen atoms in the chain respectively. The H(added) column lists the number of hydrogen atoms added and optimized by MolProbity. The Clashes column lists the number of clashes within the asymmetric unit, whereas Symm-Clashes lists symmetry-related clashes.

Mol	Chain	Non-H	H(model)	H(added)	Clashes	Symm-Clashes
1	A	2991	0	2982	27	0
2	B	754	0	760	8	0
3	A	5	0	0	0	0
4	A	2	0	0	0	0
5	A	1	0	0	0	0
6	A	27	0	12	0	0
7	A	4	0	3	4	0
8	A	12	0	16	0	0

Continued on next page...

Continued from previous page...

Mol	Chain	Non-H	H(model)	H(added)	Clashes	Symm-Clashes
9	A	287	0	0	7	0
9	B	61	0	0	1	0
All	All	4144	0	3773	35	0

The all-atom clashscore is defined as the number of clashes found per 1000 atoms (including hydrogen atoms). The all-atom clashscore for this structure is 5.

All (35) close contacts within the same asymmetric unit are listed below, sorted by their clash magnitude.

Atom-1	Atom-2	Interatomic distance (Å)	Clash overlap (Å)
1:A:126:LYS:NZ	7:A:1022:ACY:H1	1.99	0.78
2:B:874:HIS:HD2	2:B:876:CYS:H	1.33	0.76
7:A:1022:ACY:H3	9:A:3272:HOH:O	1.89	0.71
1:A:387:ASN:HD22	1:A:388:VAL:H	1.41	0.68
2:B:858:THR:H	2:B:861:GLN:HE21	1.43	0.67
1:A:151:ASN:H	1:A:154:GLN:HE21	1.41	0.67
1:A:51:ILE:CD1	9:A:3367:HOH:O	2.44	0.66
1:A:389:GLN:HG2	2:B:892:MET:HG3	1.79	0.64
2:B:877:LYS:HD3	9:B:142:HOH:O	2.04	0.58
1:A:126:LYS:HZ2	7:A:1022:ACY:H1	1.70	0.57
1:A:233:PHE:HA	1:A:306:ASN:HD21	1.71	0.56
2:B:874:HIS:CD2	2:B:876:CYS:H	2.20	0.54
1:A:388:VAL:HG13	1:A:389:GLN:H	1.74	0.53
1:A:389:GLN:NE2	9:A:3434:HOH:O	2.05	0.50
1:A:187:LYS:HE2	1:A:390:ASP:CG	2.36	0.49
9:A:3322:HOH:O	2:B:874:HIS:HE1	1.95	0.48
1:A:126:LYS:HZ1	7:A:1022:ACY:H1	1.77	0.47
1:A:58:GLN:HE22	1:A:62:ASN:HD22	1.62	0.47
1:A:375:VAL:HG13	1:A:384:LYS:HE2	1.97	0.47
1:A:93:MET:HE3	1:A:104:GLN:HE21	1.79	0.47
1:A:151:ASN:H	1:A:154:GLN:NE2	2.11	0.46
1:A:93:MET:HE2	1:A:93:MET:HB2	1.87	0.45
1:A:233:PHE:HA	1:A:306:ASN:ND2	2.31	0.45
1:A:272:ARG:HD3	9:A:3371:HOH:O	2.15	0.45
1:A:103:VAL:O	1:A:113:SER:HA	2.17	0.45
1:A:388:VAL:HG13	1:A:389:GLN:N	2.32	0.44
2:B:822:TRP:O	2:B:826:LYS:HG2	2.17	0.44
1:A:36:ARG:NE	9:A:3390:HOH:O	2.50	0.44
1:A:385:SER:O	1:A:386:GLU:HB2	2.18	0.44
2:B:829:ASN:HD22	2:B:832:ALA:H	1.66	0.44
1:A:51:ILE:HD13	9:A:3367:HOH:O	2.14	0.43

Continued on next page...

Continued from previous page...

Atom-1	Atom-2	Interatomic distance (Å)	Clash overlap (Å)
1:A:387:ASN:ND2	1:A:388:VAL:H	2.11	0.43
1:A:386:GLU:O	1:A:388:VAL:N	2.51	0.43
1:A:253:ILE:HG22	1:A:288:TYR:CG	2.56	0.41
1:A:315:ASP:HB2	1:A:316:PRO:HD3	2.02	0.40

There are no symmetry-related clashes.

5.3 Torsion angles [i](#)

5.3.1 Protein backbone [i](#)

In the following table, the Percentiles column shows the percent Ramachandran outliers of the chain as a percentile score with respect to all X-ray entries followed by that with respect to entries of similar resolution.

The Analysed column shows the number of residues for which the backbone conformation was analysed, and the total number of residues.

Mol	Chain	Analysed	Favoured	Allowed	Outliers	Percentiles	
1	A	385/394 (98%)	378 (98%)	3 (1%)	4 (1%)	12	3
2	B	90/92 (98%)	90 (100%)	0	0	100	100
All	All	475/486 (98%)	468 (98%)	3 (1%)	4 (1%)	16	5

All (4) Ramachandran outliers are listed below:

Mol	Chain	Res	Type
1	A	387	ASN
1	A	388	VAL
1	A	389	GLN
1	A	386	GLU

5.3.2 Protein sidechains [i](#)

In the following table, the Percentiles column shows the percent sidechain outliers of the chain as a percentile score with respect to all X-ray entries followed by that with respect to entries of similar resolution.

The Analysed column shows the number of residues for which the sidechain conformation was analysed, and the total number of residues.

Mol	Chain	Analysed	Rotameric	Outliers	Percentiles	
1	A	321/328 (98%)	313 (98%)	8 (2%)	42	24
2	B	81/81 (100%)	77 (95%)	4 (5%)	22	8
All	All	402/409 (98%)	390 (97%)	12 (3%)	36	19

All (12) residues with a non-rotameric sidechain are listed below:

Mol	Chain	Res	Type
1	A	58	GLN
1	A	93	MET
1	A	228	LEU
1	A	279	GLN
1	A	359	LEU
1	A	386	GLU
1	A	387	ASN
1	A	389	GLN
2	B	817	LEU
2	B	829	ASN
2	B	871	LEU
2	B	877	LYS

Sometimes sidechains can be flipped to improve hydrogen bonding and reduce clashes. All (16) such sidechains are listed below:

Mol	Chain	Res	Type
1	A	33	GLN
1	A	58	GLN
1	A	104	GLN
1	A	154	GLN
1	A	194	ASN
1	A	227	HIS
1	A	239	ASN
1	A	306	ASN
1	A	351	GLN
1	A	387	ASN
1	A	389	GLN
2	B	829	ASN
2	B	861	GLN
2	B	874	HIS
2	B	895	ASN
2	B	904	GLN

5.3.3 RNA [i](#)

There are no RNA molecules in this entry.

5.4 Non-standard residues in protein, DNA, RNA chains [i](#)

There are no non-standard protein/DNA/RNA residues in this entry.

5.5 Carbohydrates [i](#)

There are no oligosaccharides in this entry.

5.6 Ligand geometry [i](#)

Of 8 ligands modelled in this entry, 3 are monoatomic - leaving 5 for Mogul analysis.

In the following table, the Counts columns list the number of bonds (or angles) for which Mogul statistics could be retrieved, the number of bonds (or angles) that are observed in the model and the number of bonds (or angles) that are defined in the Chemical Component Dictionary. The Link column lists molecule types, if any, to which the group is linked. The Z score for a bond length (or angle) is the number of standard deviations the observed value is removed from the expected value. A bond length (or angle) with $|Z| > 2$ is considered an outlier worth inspection. RMSZ is the root-mean-square of all Z scores of the bond lengths (or angles).

Mol	Type	Chain	Res	Link	Bond lengths			Bond angles		
					Counts	RMSZ	# $ Z > 2$	Counts	RMSZ	# $ Z > 2$
8	GOL	A	3147	-	5,5,5	0.34	0	5,5,5	0.34	0
6	ADP	A	487	4,5	28,29,29	1.53	5 (17%)	43,45,45	1.80	11 (25%)
3	PO4	A	488	4,5	4,4,4	1.10	0	6,6,6	0.83	0
7	ACY	A	1022	-	3,3,3	0.82	0	3,3,3	1.10	0
8	GOL	A	3148	-	5,5,5	0.34	0	5,5,5	0.70	0

In the following table, the Chirals column lists the number of chiral outliers, the number of chiral centers analysed, the number of these observed in the model and the number defined in the Chemical Component Dictionary. Similar counts are reported in the Torsion and Rings columns. '-' means no outliers of that kind were identified.

Mol	Type	Chain	Res	Link	Chirals	Torsions	Rings
8	GOL	A	3148	-	-	0/4/4/4	-
8	GOL	A	3147	-	-	0/4/4/4	-
6	ADP	A	487	4,5	-	0/16/32/32	0/3/3/3

All (5) bond length outliers are listed below:

Mol	Chain	Res	Type	Atoms	Z	Observed(Å)	Ideal(Å)
6	A	487	ADP	C5-C4	4.68	1.47	1.39
6	A	487	ADP	PA-O3A	3.31	1.63	1.59
6	A	487	ADP	C5-C6	2.79	1.48	1.41
6	A	487	ADP	C8-N7	2.31	1.36	1.31
6	A	487	ADP	C4-N9	-2.12	1.33	1.37

All (11) bond angle outliers are listed below:

Mol	Chain	Res	Type	Atoms	Z	Observed(°)	Ideal(°)
6	A	487	ADP	C5-C4-N3	-5.04	119.78	126.72
6	A	487	ADP	N3-C4-N9	4.36	134.59	127.17
6	A	487	ADP	C4-N9-C8	3.76	109.69	105.74
6	A	487	ADP	C2-N3-C4	3.30	119.88	111.83
6	A	487	ADP	N3-C2-N1	-3.24	123.67	128.58
6	A	487	ADP	C4-C5-N7	-3.18	106.95	110.58
6	A	487	ADP	N9-C8-N7	-2.70	110.11	113.94
6	A	487	ADP	C5-N7-C8	2.66	107.62	103.45
6	A	487	ADP	O2A-PA-O1A	2.13	122.36	112.44
6	A	487	ADP	C6-C5-N7	2.00	135.95	132.09
6	A	487	ADP	C2-N1-C6	2.00	122.02	118.73

There are no chirality outliers.

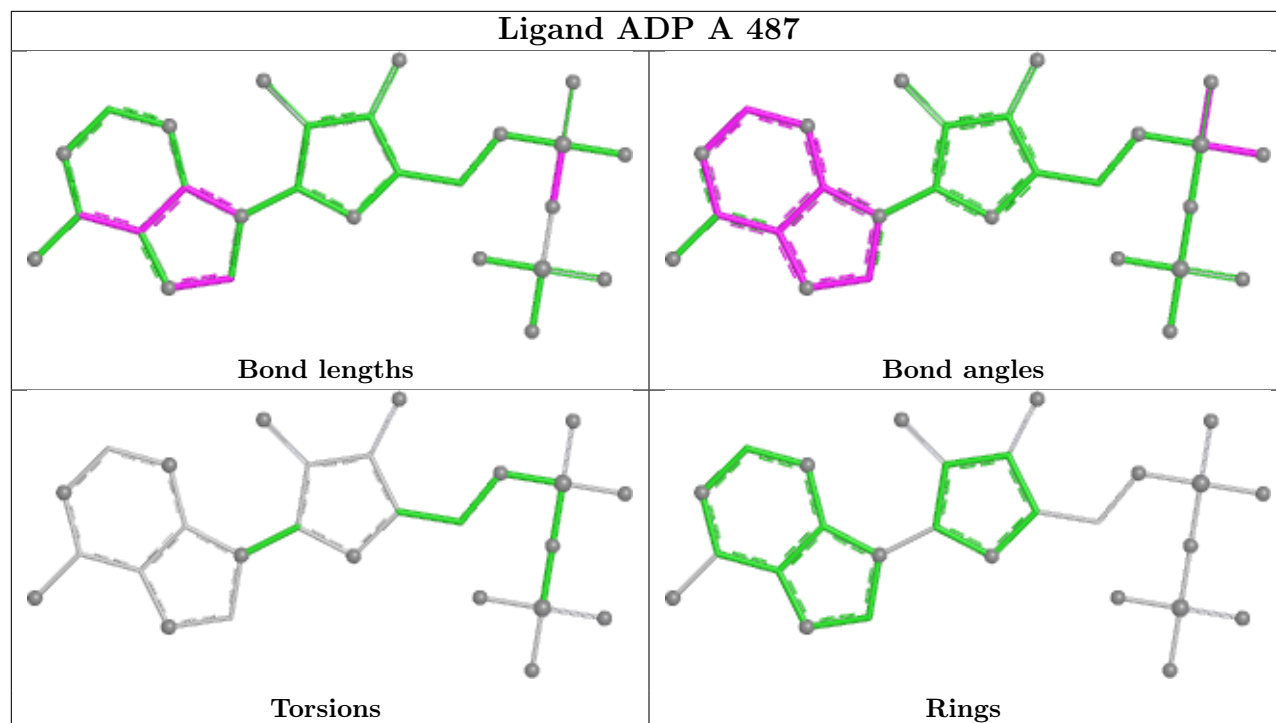
There are no torsion outliers.

There are no ring outliers.

1 monomer is involved in 4 short contacts:

Mol	Chain	Res	Type	Clashes	Symm-Clashes
7	A	1022	ACY	4	0

The following is a two-dimensional graphical depiction of Mogul quality analysis of bond lengths, bond angles, torsion angles, and ring geometry for all instances of the Ligand of Interest. In addition, ligands with molecular weight > 250 and outliers as shown on the validation Tables will also be included. For torsion angles, if less than 5% of the Mogul distribution of torsion angles is within 10 degrees of the torsion angle in question, then that torsion angle is considered an outlier. Any bond that is central to one or more torsion angles identified as an outlier by Mogul will be highlighted in the graph. For rings, the root-mean-square deviation (RMSD) between the ring in question and similar rings identified by Mogul is calculated over all ring torsion angles. If the average RMSD is greater than 60 degrees and the minimal RMSD between the ring in question and any Mogul-identified rings is also greater than 60 degrees, then that ring is considered an outlier. The outliers are highlighted in purple. The color gray indicates Mogul did not find sufficient equivalents in the CSD to analyse the geometry.



5.7 Other polymers [i](#)

There are no such residues in this entry.

5.8 Polymer linkage issues [i](#)

There are no chain breaks in this entry.

6 Fit of model and data

6.1 Protein, DNA and RNA chains

In the following table, the column labelled ‘#RSRZ> 2’ contains the number (and percentage) of RSRZ outliers, followed by percent RSRZ outliers for the chain as percentile scores relative to all X-ray entries and entries of similar resolution. The OWAB column contains the minimum, median, 95th percentile and maximum values of the occupancy-weighted average B-factor per residue. The column labelled ‘Q< 0.9’ lists the number of (and percentage) of residues with an average occupancy less than 0.9.

Mol	Chain	Analysed	<RSRZ>	#RSRZ>2	OWAB(Å ²)	Q<0.9
1	A	387/394 (98%)	1.27	66 (17%) 4 3	15, 26, 32, 67	0
2	B	92/92 (100%)	0.94	7 (7%) 20 21	20, 27, 37, 45	0
All	All	479/486 (98%)	1.21	73 (15%) 5 5	15, 26, 34, 67	0

All (73) RSRZ outliers are listed below:

Mol	Chain	Res	Type	RSRZ
1	A	388	VAL	13.3
1	A	389	GLN	8.6
1	A	390	ASP	7.5
1	A	294	TYR	6.1
1	A	387	ASN	4.5
1	A	109	GLY	4.2
2	B	843	ALA	3.9
1	A	288	TYR	3.7
1	A	255	GLU	3.3
1	A	11	LEU	3.3
1	A	146	VAL	3.2
1	A	190	GLY	3.2
2	B	825	GLY	3.1
2	B	903	ASN	3.1
1	A	329	SER	2.9
1	A	9	ILE	2.8
1	A	191	ALA	2.8
1	A	293	PHE	2.8
1	A	107	TYR	2.8
1	A	287	LEU	2.8
2	B	817	LEU	2.8
1	A	249	HIS	2.8
1	A	245	PHE	2.7
1	A	93	MET	2.7

Continued on next page...

Continued from previous page...

Mol	Chain	Res	Type	RSRZ
1	A	172	ILE	2.6
1	A	243	ALA	2.6
2	B	904	GLN	2.6
1	A	89	HIS	2.6
1	A	281	SER	2.6
1	A	61	MET	2.6
1	A	331	ILE	2.6
1	A	385	SER	2.6
1	A	168	ASN	2.6
1	A	327	ASP	2.5
1	A	18	VAL	2.5
1	A	242	ILE	2.5
1	A	253	ILE	2.5
1	A	334	ILE	2.5
1	A	79	ASP	2.5
1	A	286	SER	2.5
1	A	150	PHE	2.5
1	A	252	ASP	2.5
1	A	189	VAL	2.5
1	A	145	THR	2.5
2	B	847	LYS	2.4
1	A	386	GLU	2.4
1	A	46	ASP	2.4
1	A	250	LYS	2.4
1	A	354	PHE	2.4
1	A	240	HIS	2.4
1	A	47	THR	2.3
1	A	124	LEU	2.3
1	A	157	ALA	2.3
1	A	247	ARG	2.3
1	A	105	VAL	2.3
1	A	291	ILE	2.3
1	A	289	GLU	2.3
1	A	110	GLU	2.2
1	A	108	LYS	2.2
1	A	353	PHE	2.2
1	A	355	ASN	2.2
1	A	285	ASP	2.1
1	A	88	LYS	2.1
1	A	169	VAL	2.1
1	A	170	LEU	2.1
2	B	813	ASP	2.1

Continued on next page...

Continued from previous page...

Mol	Chain	Res	Type	RSRZ
1	A	358	GLU	2.1
1	A	279	GLN	2.0
1	A	144	VAL	2.0
1	A	254	SER	2.0
1	A	260	VAL	2.0
1	A	111	THR	2.0
1	A	147	PRO	2.0

6.2 Non-standard residues in protein, DNA, RNA chains [i](#)

There are no non-standard protein/DNA/RNA residues in this entry.

6.3 Carbohydrates [i](#)

There are no oligosaccharides in this entry.

6.4 Ligands [i](#)

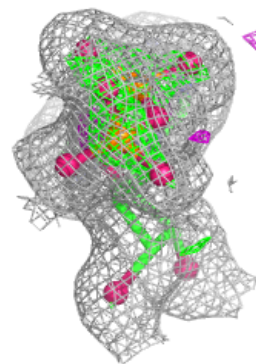
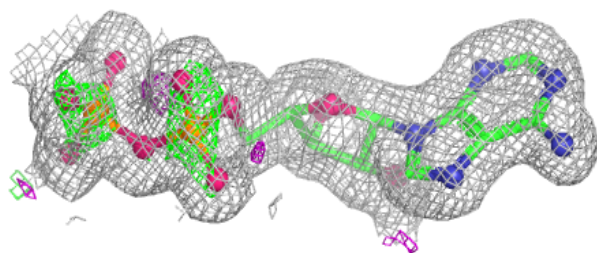
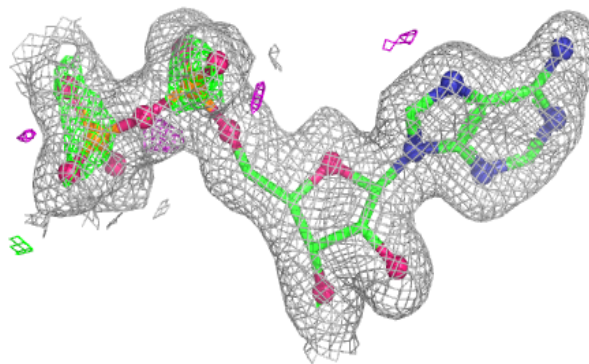
In the following table, the Atoms column lists the number of modelled atoms in the group and the number defined in the chemical component dictionary. The B-factors column lists the minimum, median, 95th percentile and maximum values of B factors of atoms in the group. The column labelled 'Q< 0.9' lists the number of atoms with occupancy less than 0.9.

Mol	Type	Chain	Res	Atoms	RSCC	RSR	B-factors(Å ²)	Q<0.9
8	GOL	A	3147	6/6	0.90	0.10	22,31,33,33	0
8	GOL	A	3148	6/6	0.90	0.11	21,23,26,26	0
7	ACY	A	1022	4/4	0.91	0.12	27,27,28,29	0
6	ADP	A	487	27/27	0.97	0.10	25,27,28,28	0
4	NA	A	490	1/1	0.97	0.05	26,26,26,26	0
5	MG	A	491	1/1	0.98	0.05	17,17,17,17	0
3	PO4	A	488	5/5	0.99	0.05	16,16,16,17	0
4	NA	A	489	1/1	0.99	0.05	22,22,22,22	0

The following is a graphical depiction of the model fit to experimental electron density of all instances of the Ligand of Interest. In addition, ligands with molecular weight > 250 and outliers as shown on the geometry validation Tables will also be included. Each fit is shown from different orientation to approximate a three-dimensional view.

Electron density around ADP A 487:

$2mF_o-DF_c$ (at 0.7 rmsd) in gray
 mF_o-DF_c (at 3 rmsd) in purple (negative)
and green (positive)



6.5 Other polymers [i](#)

There are no such residues in this entry.