



# Full wwPDB X-ray Structure Validation Report ⓘ

Mar 10, 2026 – 01:43 PM UTC

PDB ID : 2VNY / pdb\_00002vny  
Title : Structure of PKA-PKB chimera complexed with (1-(9H-Purin-6-yl) piperidin-4-yl)amine  
Authors : Caldwell, J.J.; Davies, T.G.; Donald, A.; McHardy, T.; Rowlands, M.G.; Ah-erne, G.W.; Hunter, L.K.; Taylor, K.; Ruddie, R.; Raynaud, F.I.; Verdonk, M.; Workman, P.; Garrett, M.D.; Collins, I.  
Deposited on : 2008-02-08  
Resolution : 1.96 Å(reported)

This is a Full wwPDB X-ray Structure Validation Report for a publicly released PDB entry.

We welcome your comments at [validation@mail.wwpdb.org](mailto:validation@mail.wwpdb.org)

A user guide is available at

<https://www.wwpdb.org/validation/2017/XrayValidationReportHelp>

with specific help available everywhere you see the ⓘ symbol.

The types of validation reports are described at

<http://www.wwpdb.org/validation/2017/FAQs#types>.

---

The following versions of software and data (see [references ⓘ](#)) were used in the production of this report:

MolProbity	:	4-5-2 with Phenix2.0
Mogul	:	2022.3.0, CSD as543be (2022)
Xtriage (Phenix)	:	2.0
EDS	:	3.0
Percentile statistics	:	20250101.v01 (using entries in the PDB archive January 1st 2025)
CCP4	:	9.0.010 (Gargrove)
Density-Fitness	:	1.0.12
Ideal geometry (proteins)	:	Engh & Huber (2001)
Ideal geometry (DNA, RNA)	:	Parkinson et al. (1996)
Validation Pipeline (wwPDB-VP)	:	2.49

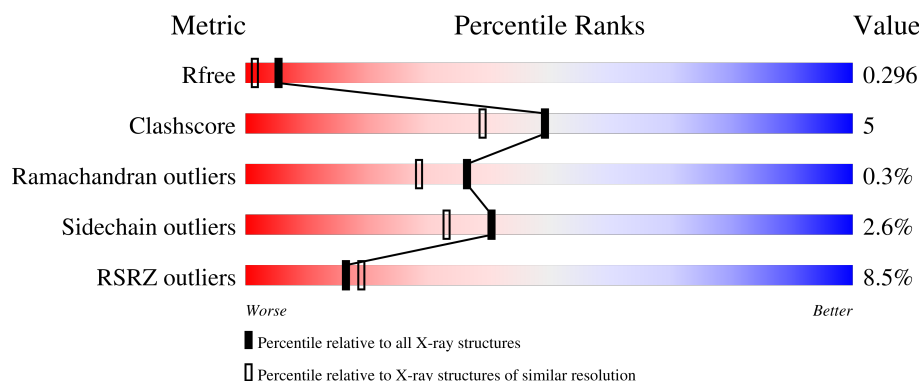
# 1 Overall quality at a glance

The following experimental techniques were used to determine the structure:

*X-RAY DIFFRACTION*



The reported resolution of this entry is 1.96 Å.

Percentile scores (ranging between 0-100) for global validation metrics of the entry are shown in the following graphic. The table shows the number of entries on which the scores are based.



Metric	Whole archive (#Entries)	Similar resolution (#Entries, resolution range(Å))
$R_{free}$	180053	3494 (1.96-1.96)
Clashscore	190562	3612 (1.96-1.96)
Ramachandran outliers	187476	3587 (1.96-1.96)
Sidechain outliers	187428	3587 (1.96-1.96)
RSRZ outliers	180081	3495 (1.96-1.96)

The table below summarises the geometric issues observed across the polymeric chains and their fit to the electron density. The red, orange, yellow and green segments of the lower bar indicate the fraction of residues that contain outliers for  $\geq 3$ , 2, 1 and 0 types of geometric quality criteria respectively. A grey segment represents the fraction of residues that are not modelled. The numeric value for each fraction is indicated below the corresponding segment, with a dot representing fractions  $\leq 5\%$ . The upper red bar (where present) indicates the fraction of residues that have poor fit to the electron density. The numeric value is given above the bar.

Mol	Chain	Length	Quality of chain
1	A	351	
2	I	20	

## 2 Entry composition

There are 4 unique types of molecules in this entry. The entry contains 3375 atoms, of which 0 are hydrogens and 0 are deuteriums.

In the tables below, the ZeroOcc column contains the number of atoms modelled with zero occupancy, the AltConf column contains the number of residues with at least one atom in alternate conformation and the Trace column contains the number of residues modelled with at most 2 atoms.

- Molecule 1 is a protein called CAMP-DEPENDENT PROTEIN KINASE, ALPHA-CATALYTIC SUBUNIT.

Mol	Chain	Residues	Atoms						ZeroOcc	AltConf	Trace
1	A	337	Total	C	N	O	P	S	0	0	0
			2788	1803	467	505	3	10			

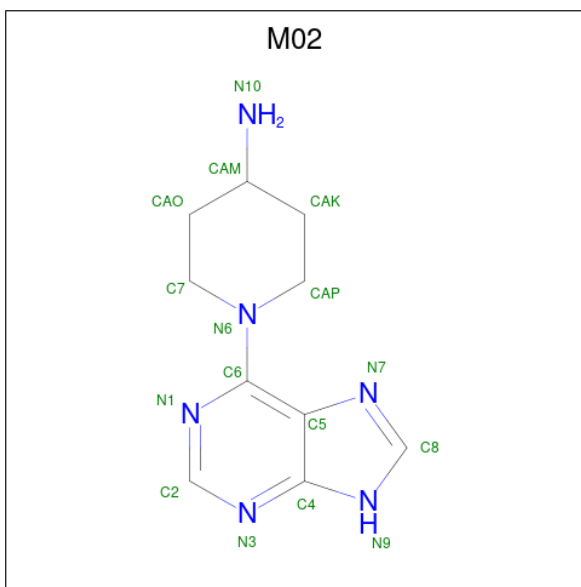
There are 4 discrepancies between the modelled and reference sequences:

Chain	Residue	Modelled	Actual	Comment	Reference
A	104	THR	VAL	engineered mutation	UNP P00517
A	123	ALA	VAL	engineered mutation	UNP P00517
A	173	MET	LEU	engineered mutation	UNP P00517
A	181	LYS	GLN	engineered mutation	UNP P00517

- Molecule 2 is a protein called CAMP-DEPENDENT PROTEIN KINASE INHIBITOR ALPHA.

Mol	Chain	Residues	Atoms				ZeroOcc	AltConf	Trace
2	I	20	Total	C	N	O	0	0	0
			157	94	32	31			

- Molecule 3 is 1-(9H-purin-6-yl)piperidin-4-amine (CCD ID: M02) (formula: C<sub>10</sub>H<sub>14</sub>N<sub>6</sub>).



Mol	Chain	Residues	Atoms			ZeroOcc	AltConf
3	A	1	Total	C	N	0	0
			16	10	6		

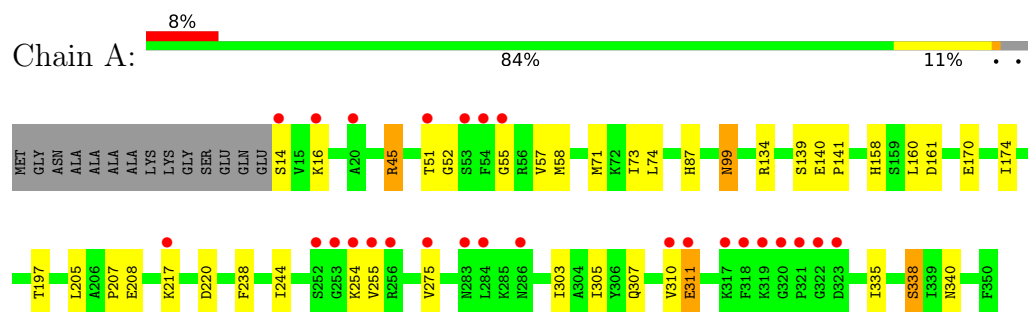
- Molecule 4 is water.

Mol	Chain	Residues	Atoms		ZeroOcc	AltConf
4	A	381	Total	O	0	0
			381	381		
4	I	33	Total	O	0	0
			33	33		

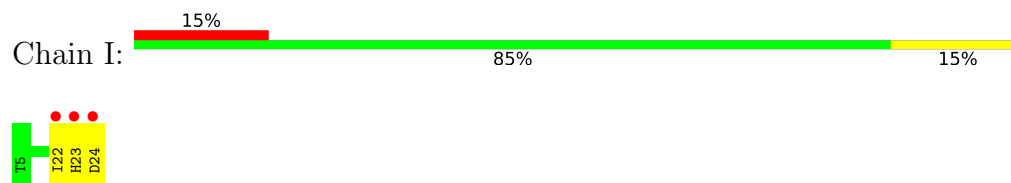
### 3 Residue-property plots [i](#)

These plots are drawn for all protein, RNA, DNA and oligosaccharide chains in the entry. The first graphic for a chain summarises the proportions of the various outlier classes displayed in the second graphic. The second graphic shows the sequence view annotated by issues in geometry and electron density. Residues are color-coded according to the number of geometric quality criteria for which they contain at least one outlier: green = 0, yellow = 1, orange = 2 and red = 3 or more. A red dot above a residue indicates a poor fit to the electron density ( $RSRZ > 2$ ). Stretches of 2 or more consecutive residues without any outlier are shown as a green connector. Residues present in the sample, but not in the model, are shown in grey.

- Molecule 1: CAMP-DEPENDENT PROTEIN KINASE, ALPHA-CATALYTIC SUBUNIT



- Molecule 2: CAMP-DEPENDENT PROTEIN KINASE INHIBITOR ALPHA



## 4 Data and refinement statistics

Property	Value	Source
Space group	P 21 21 21	Depositor
Cell constants a, b, c, $\alpha$ , $\beta$ , $\gamma$	72.86Å 74.78Å 79.93Å 90.00° 90.00° 90.00°	Depositor
Resolution (Å)	43.70 – 1.96 43.70 – 1.96	Depositor EDS
% Data completeness (in resolution range)	98.2 (43.70-1.96) 98.1 (43.70-1.96)	Depositor EDS
$R_{merge}$	0.07	Depositor
$R_{sym}$	(Not available)	Depositor
$\langle I/\sigma(I) \rangle$ <sup>1</sup>	1.87 (at 1.97Å)	Xtriage
Refinement program	REFMAC 5.2.0019I	Depositor
R, $R_{free}$	0.223 , 0.292 0.232 , 0.296	Depositor DCC
$R_{free}$ test set	1586 reflections (5.05%)	wwPDB-VP
Wilson B-factor (Å <sup>2</sup> )	28.2	Xtriage
Anisotropy	0.229	Xtriage
Bulk solvent $k_{sol}$ (e/Å <sup>3</sup> ), $B_{sol}$ (Å <sup>2</sup> )	0.31 , 42.2	EDS
L-test for twinning <sup>2</sup>	$\langle  L  \rangle = 0.53$ , $\langle L^2 \rangle = 0.38$	Xtriage
Estimated twinning fraction	0.000 for k,h,-l	Xtriage
$F_o, F_c$ correlation	0.94	EDS
Total number of atoms	3375	wwPDB-VP
Average B, all atoms (Å <sup>2</sup> )	32.0	wwPDB-VP

Xtriage's analysis on translational NCS is as follows: *The largest off-origin peak in the Patterson function is 6.43% of the height of the origin peak. No significant pseudotranslation is detected.*

<sup>1</sup>Intensities estimated from amplitudes.

<sup>2</sup>Theoretical values of  $\langle |L| \rangle$ ,  $\langle L^2 \rangle$  for acentric reflections are 0.5, 0.333 respectively for untwinned datasets, and 0.375, 0.2 for perfectly twinned datasets.

## 5 Model quality

### 5.1 Standard geometry

Bond lengths and bond angles in the following residue types are not validated in this section: M02, TPO, SEP

The Z score for a bond length (or angle) is the number of standard deviations the observed value is removed from the expected value. A bond length (or angle) with  $|Z| > 5$  is considered an outlier worth inspection. RMSZ is the root-mean-square of all Z scores of the bond lengths (or angles).

Mol	Chain	Bond lengths		Bond angles	
		RMSZ	$\# Z  > 5$	RMSZ	$\# Z  > 5$
1	A	0.73	0/2827	0.86	2/3804 (0.1%)
2	I	0.84	0/159	0.95	0/212
All	All	0.74	0/2986	0.86	2/4016 (0.0%)

There are no bond length outliers.

All (2) bond angle outliers are listed below:

Mol	Chain	Res	Type	Atoms	Z	Observed(°)	Ideal(°)
1	A	208	GLU	CB-CA-C	-6.59	100.27	110.81
1	A	244	ILE	CB-CA-C	-5.57	104.84	111.97

There are no chirality outliers.

There are no planarity outliers.

### 5.2 Too-close contacts

In the following table, the Non-H and H(model) columns list the number of non-hydrogen atoms and hydrogen atoms in the chain respectively. The H(added) column lists the number of hydrogen atoms added and optimized by MolProbity. The Clashes column lists the number of clashes within the asymmetric unit, whereas Symm-Clashes lists symmetry-related clashes.

Mol	Chain	Non-H	H(model)	H(added)	Clashes	Symm-Clashes
1	A	2788	0	2762	30	0
2	I	157	0	146	3	0
3	A	16	0	14	2	0
4	A	381	0	0	5	0
4	I	33	0	0	0	0
All	All	3375	0	2922	32	0

The all-atom clashscore is defined as the number of clashes found per 1000 atoms (including hydrogen atoms). The all-atom clashscore for this structure is 5.

All (32) close contacts within the same asymmetric unit are listed below, sorted by their clash magnitude.

Atom-1	Atom-2	Interatomic distance (Å)	Clash overlap (Å)
1:A:45:ARG:CD	1:A:335:ILE:HD12	2.14	0.77
1:A:174:ILE:CD1	1:A:180:ILE:HD11	2.22	0.70
1:A:45:ARG:NE	1:A:335:ILE:HD12	2.11	0.65
1:A:174:ILE:HD13	1:A:180:ILE:CD1	2.30	0.62
1:A:14:SER:N	4:A:2001:HOH:O	2.37	0.57
1:A:174:ILE:CD1	1:A:180:ILE:CD1	2.83	0.57
1:A:174:ILE:HD13	1:A:180:ILE:HD11	1.88	0.56
1:A:99:ASN:C	1:A:99:ASN:HD22	2.16	0.54
1:A:207:PRO:HG3	1:A:275:VAL:HG22	1.90	0.53
1:A:311:GLU:H	1:A:311:GLU:CD	2.16	0.53
1:A:307:GLN:NE2	4:A:2327:HOH:O	2.41	0.53
1:A:158:HIS:HE1	1:A:220:ASP:OD2	1.93	0.51
1:A:305:ILE:HD13	1:A:310:VAL:HG21	1.94	0.50
1:A:52:GLY:N	1:A:55:GLY:O	2.45	0.50
2:I:23:HIS:O	2:I:24:ASP:HB2	2.12	0.49
1:A:170:GLU:O	3:A:1351:M02:N10	2.46	0.48
1:A:134:ARG:NH1	4:A:2186:HOH:O	2.47	0.47
1:A:57:VAL:HG21	3:A:1351:M02:HAP2	1.97	0.46
1:A:205:LEU:HD11	2:I:22:ILE:HD13	1.98	0.46
1:A:161:ASP:HA	1:A:217:LYS:HE2	1.96	0.45
1:A:45:ARG:CD	1:A:335:ILE:CD1	2.90	0.45
1:A:71:MET:HE3	1:A:73:ILE:HD11	1.99	0.45
1:A:174:ILE:HD13	1:A:180:ILE:HD12	1.98	0.45
1:A:45:ARG:HD3	1:A:335:ILE:HD12	1.97	0.44
1:A:238:PHE:CZ	1:A:255:VAL:HG22	2.53	0.44
1:A:58:MET:HE1	4:A:2180:HOH:O	2.19	0.42
1:A:338:SEP:O1P	1:A:340:ASN:ND2	2.47	0.41
2:I:23:HIS:O	2:I:24:ASP:CB	2.68	0.41
1:A:45:ARG:HG3	4:A:2059:HOH:O	2.20	0.41
1:A:303:ILE:H	1:A:303:ILE:HD12	1.86	0.40
1:A:140:GLU:N	1:A:141:PRO:CD	2.84	0.40
1:A:87:HIS:HB3	1:A:186:GLY:O	2.21	0.40

There are no symmetry-related clashes.



## 5.3 Torsion angles

### 5.3.1 Protein backbone

In the following table, the Percentiles column shows the percent Ramachandran outliers of the chain as a percentile score with respect to all X-ray entries followed by that with respect to entries of similar resolution.

The Analysed column shows the number of residues for which the backbone conformation was analysed, and the total number of residues.

Mol	Chain	Analysed	Favoured	Allowed	Outliers	Percentiles	
1	A	332/351 (95%)	323 (97%)	8 (2%)	1 (0%)	36	28
2	I	18/20 (90%)	17 (94%)	1 (6%)	0	100	100
All	All	350/371 (94%)	340 (97%)	9 (3%)	1 (0%)	36	28

All (1) Ramachandran outliers are listed below:

Mol	Chain	Res	Type
1	A	254	LYS

### 5.3.2 Protein sidechains

In the following table, the Percentiles column shows the percent sidechain outliers of the chain as a percentile score with respect to all X-ray entries followed by that with respect to entries of similar resolution.

The Analysed column shows the number of residues for which the sidechain conformation was analysed, and the total number of residues.

Mol	Chain	Analysed	Rotameric	Outliers	Percentiles	
1	A	294/302 (97%)	286 (97%)	8 (3%)	39	32
2	I	15/15 (100%)	15 (100%)	0	100	100
All	All	309/317 (98%)	301 (97%)	8 (3%)	40	33

All (8) residues with a non-rotameric sidechain are listed below:

Mol	Chain	Res	Type
1	A	16	LYS
1	A	45	ARG
1	A	51	THR
1	A	74	LEU
1	A	99	ASN

*Continued on next page...*

*Continued from previous page...*

Mol	Chain	Res	Type
1	A	160	LEU
1	A	180	ILE
1	A	311	GLU

Sometimes sidechains can be flipped to improve hydrogen bonding and reduce clashes. All (5) such sidechains are listed below:

Mol	Chain	Res	Type
1	A	99	ASN
1	A	113	ASN
1	A	158	HIS
1	A	271	ASN
1	A	286	ASN

### 5.3.3 RNA ⓘ

There are no RNA molecules in this entry.

## 5.4 Non-standard residues in protein, DNA, RNA chains ⓘ

3 non-standard protein/DNA/RNA residues are modelled in this entry.

In the following table, the Counts columns list the number of bonds (or angles) for which Mogul statistics could be retrieved, the number of bonds (or angles) that are observed in the model and the number of bonds (or angles) that are defined in the Chemical Component Dictionary. The Link column lists molecule types, if any, to which the group is linked. The Z score for a bond length (or angle) is the number of standard deviations the observed value is removed from the expected value. A bond length (or angle) with  $|Z| > 2$  is considered an outlier worth inspection. RMSZ is the root-mean-square of all Z scores of the bond lengths (or angles).

Mol	Type	Chain	Res	Link	Bond lengths			Bond angles		
					Counts	RMSZ	$\# Z  > 2$	Counts	RMSZ	$\# Z  > 2$
1	SEP	A	338	1	8,9,10	1.58	1 (12%)	7,12,14	1.63	1 (14%)
1	SEP	A	139	1	8,9,10	1.86	3 (37%)	7,12,14	1.84	2 (28%)
1	TPO	A	197	1	8,10,11	1.33	1 (12%)	10,14,16	1.01	0

In the following table, the Chirals column lists the number of chiral outliers, the number of chiral centers analysed, the number of these observed in the model and the number defined in the Chemical Component Dictionary. Similar counts are reported in the Torsion and Rings columns. '-' means no outliers of that kind were identified.

Mol	Type	Chain	Res	Link	Chirals	Torsions	Rings
1	SEP	A	338	1	-	2/6/8/10	-
1	SEP	A	139	1	-	0/6/8/10	-
1	TPO	A	197	1	-	1/9/11/13	-

All (5) bond length outliers are listed below:

Mol	Chain	Res	Type	Atoms	Z	Observed(Å)	Ideal(Å)
1	A	139	SEP	P-O1P	4.05	1.63	1.50
1	A	338	SEP	P-O1P	3.46	1.61	1.50
1	A	197	TPO	P-O1P	2.35	1.57	1.50
1	A	139	SEP	P-O3P	2.08	1.62	1.54
1	A	139	SEP	P-O2P	2.02	1.62	1.54

All (3) bond angle outliers are listed below:

Mol	Chain	Res	Type	Atoms	Z	Observed(°)	Ideal(°)
1	A	139	SEP	OG-CB-CA	3.78	111.82	108.14
1	A	338	SEP	OG-CB-CA	3.68	111.73	108.14
1	A	139	SEP	O2P-P-OG	2.50	113.18	106.67

There are no chirality outliers.

All (3) torsion outliers are listed below:

Mol	Chain	Res	Type	Atoms
1	A	338	SEP	CA-CB-OG-P
1	A	338	SEP	N-CA-CB-OG
1	A	197	TPO	O-C-CA-CB

There are no ring outliers.

1 monomer is involved in 1 short contact:

Mol	Chain	Res	Type	Clashes	Symm-Clashes
1	A	338	SEP	1	0

## 5.5 Carbohydrates

There are no oligosaccharides in this entry.

## 5.6 Ligand geometry

1 ligand is modelled in this entry.

In the following table, the Counts columns list the number of bonds (or angles) for which Mogul statistics could be retrieved, the number of bonds (or angles) that are observed in the model and the number of bonds (or angles) that are defined in the Chemical Component Dictionary. The Link column lists molecule types, if any, to which the group is linked. The Z score for a bond length (or angle) is the number of standard deviations the observed value is removed from the expected value. A bond length (or angle) with  $|Z| > 2$  is considered an outlier worth inspection. RMSZ is the root-mean-square of all Z scores of the bond lengths (or angles).

Mol	Type	Chain	Res	Link	Bond lengths			Bond angles		
					Counts	RMSZ	$\# Z  > 2$	Counts	RMSZ	$\# Z  > 2$
3	M02	A	1351	-	18,18,18	0.71	0	24,25,25	0.97	2 (8%)

In the following table, the Chirals column lists the number of chiral outliers, the number of chiral centers analysed, the number of these observed in the model and the number defined in the Chemical Component Dictionary. Similar counts are reported in the Torsion and Rings columns. '-' means no outliers of that kind were identified.

Mol	Type	Chain	Res	Link	Chirals	Torsions	Rings
3	M02	A	1351	-	-	0/4/14/14	0/3/3/3

There are no bond length outliers.

All (2) bond angle outliers are listed below:

Mol	Chain	Res	Type	Atoms	Z	Observed(°)	Ideal(°)
3	A	1351	M02	C2-N1-C6	2.55	118.06	111.83
3	A	1351	M02	CAP-N6-C6	2.26	126.59	118.92

There are no chirality outliers.

There are no torsion outliers.

There are no ring outliers.

1 monomer is involved in 2 short contacts:

Mol	Chain	Res	Type	Clashes	Symm-Clashes
3	A	1351	M02	2	0

## 5.7 Other polymers

There are no such residues in this entry.

## 5.8 Polymer linkage issues ⓘ

There are no chain breaks in this entry.

## 6 Fit of model and data

### 6.1 Protein, DNA and RNA chains

In the following table, the column labelled ‘#RSRZ> 2’ contains the number (and percentage) of RSRZ outliers, followed by percent RSRZ outliers for the chain as percentile scores relative to all X-ray entries and entries of similar resolution. The OWAB column contains the minimum, median, 95<sup>th</sup> percentile and maximum values of the occupancy-weighted average B-factor per residue. The column labelled ‘Q< 0.9’ lists the number of (and percentage) of residues with an average occupancy less than 0.9.

Mol	Chain	Analysed	<RSRZ>	#RSRZ>2	OWAB(Å <sup>2</sup> )	Q<0.9
1	A	334/351 (95%)	0.60	27 (8%) 18 21	18, 29, 50, 84	0
2	I	20/20 (100%)	0.63	3 (15%) 5 6	22, 24, 64, 72	0
All	All	354/371 (95%)	0.60	30 (8%) 16 19	18, 28, 51, 84	0

All (30) RSRZ outliers are listed below:

Mol	Chain	Res	Type	RSRZ
1	A	54	PHE	5.7
1	A	318	PHE	5.5
2	I	23	HIS	5.3
1	A	321	PRO	5.0
1	A	253	GLY	4.4
1	A	51	THR	3.7
1	A	55	GLY	3.6
1	A	317	LYS	3.4
1	A	252	SER	3.3
1	A	320	GLY	3.3
1	A	16	LYS	3.2
2	I	24	ASP	3.1
1	A	322	GLY	3.1
1	A	275	VAL	3.0
1	A	323	ASP	2.8
1	A	53	SER	2.7
1	A	193	GLY	2.7
1	A	311	GLU	2.6
1	A	254	LYS	2.6
1	A	14	SER	2.5
2	I	22	ILE	2.4
1	A	319	LYS	2.4
1	A	255	VAL	2.4
1	A	284	LEU	2.3

*Continued on next page...*

*Continued from previous page...*

Mol	Chain	Res	Type	RSRZ
1	A	283	ASN	2.2
1	A	256	ARG	2.2
1	A	310	VAL	2.1
1	A	20	ALA	2.1
1	A	286	ASN	2.0
1	A	217	LYS	2.0

## 6.2 Non-standard residues in protein, DNA, RNA chains [i](#)

In the following table, the Atoms column lists the number of modelled atoms in the group and the number defined in the chemical component dictionary. The B-factors column lists the minimum, median, 95<sup>th</sup> percentile and maximum values of B factors of atoms in the group. The column labelled 'Q< 0.9' lists the number of atoms with occupancy less than 0.9.

Mol	Type	Chain	Res	Atoms	RSCC	RSR	B-factors( $\text{\AA}^2$ )	Q<0.9
1	SEP	A	139	10/11	0.82	0.14	32,38,62,62	0
1	SEP	A	338	10/11	0.92	0.10	35,40,42,46	0
1	TPO	A	197	11/12	0.98	0.06	19,21,24,26	0

## 6.3 Carbohydrates [i](#)

There are no oligosaccharides in this entry.

## 6.4 Ligands [i](#)

In the following table, the Atoms column lists the number of modelled atoms in the group and the number defined in the chemical component dictionary. The B-factors column lists the minimum, median, 95<sup>th</sup> percentile and maximum values of B factors of atoms in the group. The column labelled 'Q< 0.9' lists the number of atoms with occupancy less than 0.9.

Mol	Type	Chain	Res	Atoms	RSCC	RSR	B-factors( $\text{\AA}^2$ )	Q<0.9
3	M02	A	1351	16/16	0.92	0.08	20,26,30,31	0

## 6.5 Other polymers [i](#)

There are no such residues in this entry.