



Full wwPDB X-ray Structure Validation Report ⓘ

Mar 6, 2026 – 08:03 PM UTC

PDB ID : 2VUK / pdb_00002vuk
Title : Structure of the p53 core domain mutant Y220C bound to the stabilizing small-molecule drug PhiKan083
Authors : Joerger, A.C.; Boeckler, F.M.; Fersht, A.R.
Deposited on : 2008-05-26
Resolution : 1.50 Å(reported)

This is a Full wwPDB X-ray Structure Validation Report for a publicly released PDB entry.

We welcome your comments at validation@mail.wwpdb.org

A user guide is available at

<https://www.wwpdb.org/validation/2017/XrayValidationReportHelp>

with specific help available everywhere you see the ⓘ symbol.

The types of validation reports are described at

<http://www.wwpdb.org/validation/2017/FAQs#types>.

The following versions of software and data (see [references ⓘ](#)) were used in the production of this report:

MolProbity	:	4-5-2 with Phenix2.0
Mogul	:	2022.3.0, CSD as543be (2022)
Xtriage (Phenix)	:	2.0
EDS	:	3.0
Percentile statistics	:	20250101.v01 (using entries in the PDB archive January 1st 2025)
CCP4	:	9.0.010 (Gargrove)
Density-Fitness	:	1.0.12
Ideal geometry (proteins)	:	Engh & Huber (2001)
Ideal geometry (DNA, RNA)	:	Parkinson et al. (1996)
Validation Pipeline (wwPDB-VP)	:	2.49

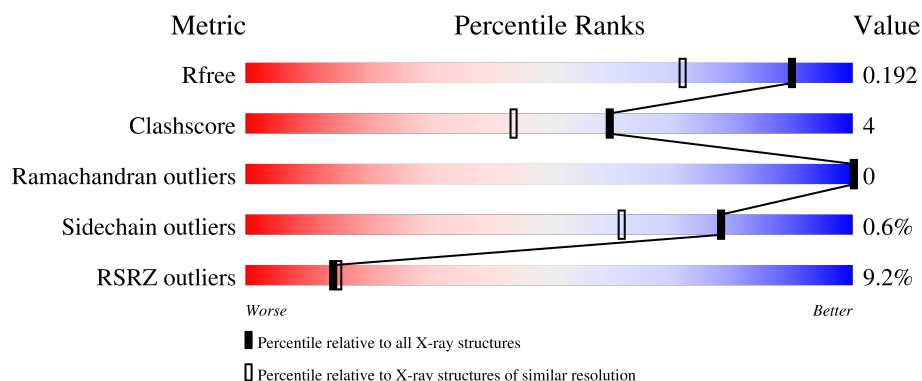
1 Overall quality at a glance

The following experimental techniques were used to determine the structure:

X-RAY DIFFRACTION

The reported resolution of this entry is 1.50 Å.

Percentile scores (ranging between 0-100) for global validation metrics of the entry are shown in the following graphic. The table shows the number of entries on which the scores are based.



Metric	Whole archive (#Entries)	Similar resolution (#Entries, resolution range(Å))
R_{free}	180053	4037 (1.50-1.50)
Clashscore	190562	4235 (1.50-1.50)
Ramachandran outliers	187476	4153 (1.50-1.50)
Sidechain outliers	187428	4150 (1.50-1.50)
RSRZ outliers	180081	4039 (1.50-1.50)

The table below summarises the geometric issues observed across the polymeric chains and their fit to the electron density. The red, orange, yellow and green segments of the lower bar indicate the fraction of residues that contain outliers for ≥ 3 , 2, 1 and 0 types of geometric quality criteria respectively. A grey segment represents the fraction of residues that are not modelled. The numeric value for each fraction is indicated below the corresponding segment, with a dot representing fractions $\leq 5\%$. The upper red bar (where present) indicates the fraction of residues that have poor fit to the electron density. The numeric value is given above the bar.

Mol	Chain	Length	Quality of chain
1	A	219	<div> <div>6%</div> <div> <div></div> <div>79%</div> <div>9%</div> <div>•</div> <div>11%</div> </div> </div>
1	B	219	<div> <div>10%</div> <div> <div></div> <div>79%</div> <div>10%</div> <div>11%</div> </div> </div>

2 Entry composition

There are 4 unique types of molecules in this entry. The entry contains 3573 atoms, of which 0 are hydrogens and 0 are deuteriums.

In the tables below, the ZeroOcc column contains the number of atoms modelled with zero occupancy, the AltConf column contains the number of residues with at least one atom in alternate conformation and the Trace column contains the number of residues modelled with at most 2 atoms.

- Molecule 1 is a protein called CELLULAR TUMOR ANTIGEN P53.

Mol	Chain	Residues	Atoms					ZeroOcc	AltConf	Trace
1	A	195	Total	C	N	O	S	0	6	0
			1549	955	284	292	18			
1	B	196	Total	C	N	O	S	0	9	0
			1570	967	289	295	19			

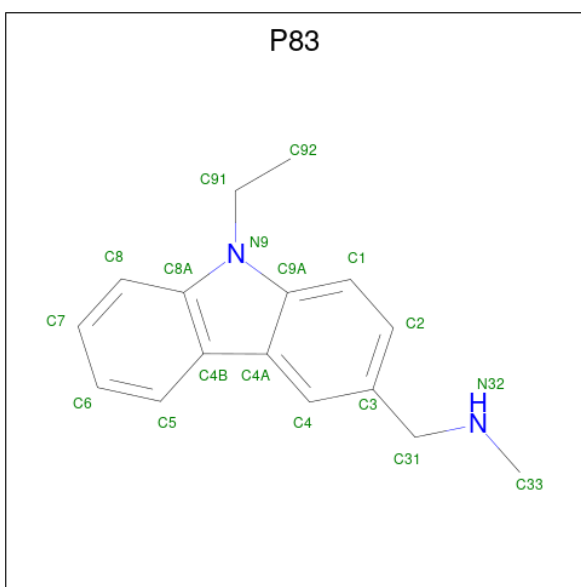
There are 10 discrepancies between the modelled and reference sequences:

Chain	Residue	Modelled	Actual	Comment	Reference
A	133	LEU	MET	engineered mutation	UNP P04637
A	203	ALA	VAL	engineered mutation	UNP P04637
A	220	CYS	TYR	engineered mutation	UNP P04637
A	239	TYR	ASN	engineered mutation	UNP P04637
A	268	ASP	ASN	engineered mutation	UNP P04637
B	133	LEU	MET	engineered mutation	UNP P04637
B	203	ALA	VAL	engineered mutation	UNP P04637
B	220	CYS	TYR	engineered mutation	UNP P04637
B	239	TYR	ASN	engineered mutation	UNP P04637
B	268	ASP	ASN	engineered mutation	UNP P04637

- Molecule 2 is ZINC ION (CCD ID: ZN) (formula: Zn).

Mol	Chain	Residues	Atoms		ZeroOcc	AltConf
2	A	1	Total	Zn	0	0
			1	1		
2	B	1	Total	Zn	0	0
			1	1		

- Molecule 3 is 1-(9-ethyl-9H-carbazol-3-yl)-N-methylmethanamine (CCD ID: P83) (formula: C₁₆H₁₈N₂).



Mol	Chain	Residues	Atoms			ZeroOcc	AltConf
3	B	1	Total	C	N	0	0
			18	16	2		

- Molecule 4 is water.

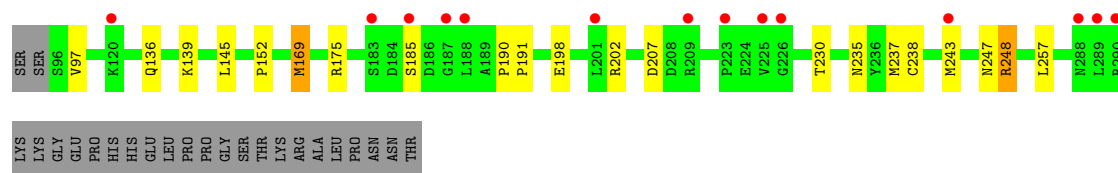
Mol	Chain	Residues	Atoms		ZeroOcc	AltConf
4	A	221	Total	O	0	0
			221	221		
4	B	213	Total	O	0	0
			213	213		

3 Residue-property plots [i](#)


These plots are drawn for all protein, RNA, DNA and oligosaccharide chains in the entry. The first graphic for a chain summarises the proportions of the various outlier classes displayed in the second graphic. The second graphic shows the sequence view annotated by issues in geometry and electron density. Residues are color-coded according to the number of geometric quality criteria for which they contain at least one outlier: green = 0, yellow = 1, orange = 2 and red = 3 or more. A red dot above a residue indicates a poor fit to the electron density ($RSRZ > 2$). Stretches of 2 or more consecutive residues without any outlier are shown as a green connector. Residues present in the sample, but not in the model, are shown in grey.

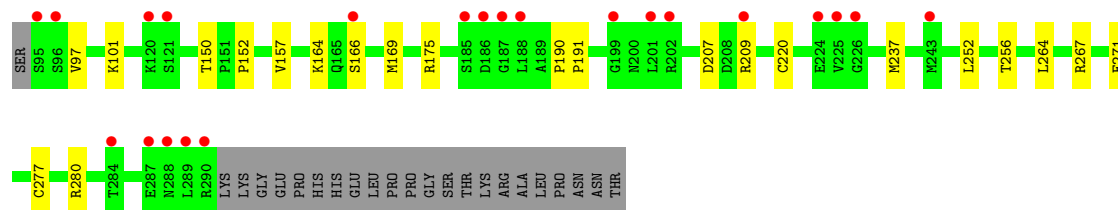
- Molecule 1: CELLULAR TUMOR ANTIGEN P53

Chain A: 



- Molecule 1: CELLULAR TUMOR ANTIGEN P53

Chain B: 



4 Data and refinement statistics

Property	Value	Source
Space group	P 21 21 21	Depositor
Cell constants a, b, c, α , β , γ	65.09Å 71.23Å 105.21Å 90.00° 90.00° 90.00°	Depositor
Resolution (Å)	65.10 – 1.50 58.98 – 1.50	Depositor EDS
% Data completeness (in resolution range)	96.6 (65.10-1.50) 96.2 (58.98-1.50)	Depositor EDS
R_{merge}	0.07	Depositor
R_{sym}	(Not available)	Depositor
$\langle I/\sigma(I) \rangle$ ¹	4.48 (at 1.50Å)	Xtriage
Refinement program	CNS 1.2	Depositor
R, R_{free}	0.186 , 0.208 0.191 , 0.192	Depositor DCC
R_{free} test set	3839 reflections (5.05%)	wwPDB-VP
Wilson B-factor (Å ²)	12.2	Xtriage
Anisotropy	0.465	Xtriage
Bulk solvent k_{sol} (e/Å ³), B_{sol} (Å ²)	0.36 , 37.8	EDS
L-test for twinning ²	$\langle L \rangle = 0.52$, $\langle L^2 \rangle = 0.36$	Xtriage
Estimated twinning fraction	No twinning to report.	Xtriage
F_o, F_c correlation	0.96	EDS
Total number of atoms	3573	wwPDB-VP
Average B, all atoms (Å ²)	15.0	wwPDB-VP

Xtriage's analysis on translational NCS is as follows: *The analyses of the Patterson function reveals a significant off-origin peak that is 37.68 % of the origin peak, indicating pseudo-translational symmetry. The chance of finding a peak of this or larger height randomly in a structure without pseudo-translational symmetry is equal to 4.1372e-04. The detected translational NCS is most likely also responsible for the elevated intensity ratio.*

¹Intensities estimated from amplitudes.

²Theoretical values of $\langle |L| \rangle$, $\langle L^2 \rangle$ for acentric reflections are 0.5, 0.333 respectively for untwinned datasets, and 0.375, 0.2 for perfectly twinned datasets.

5 Model quality

5.1 Standard geometry

Bond lengths and bond angles in the following residue types are not validated in this section: P83, ZN

The Z score for a bond length (or angle) is the number of standard deviations the observed value is removed from the expected value. A bond length (or angle) with $|Z| > 5$ is considered an outlier worth inspection. RMSZ is the root-mean-square of all Z scores of the bond lengths (or angles).

Mol	Chain	Bond lengths		Bond angles	
		RMSZ	$\# Z > 5$	RMSZ	$\# Z > 5$
1	A	0.54	0/1605	0.95	6/2178 (0.3%)
1	B	0.53	0/1639	0.98	5/2223 (0.2%)
All	All	0.54	0/3244	0.97	11/4401 (0.2%)

There are no bond length outliers.

All (11) bond angle outliers are listed below:

Mol	Chain	Res	Type	Atoms	Z	Observed(°)	Ideal(°)
1	B	152	PRO	N-CA-C	7.54	117.71	110.47
1	B	237	MET	N-CA-C	7.35	121.96	112.92
1	A	237	MET	N-CA-C	7.17	121.75	112.92
1	A	190	PRO	N-CA-C	-6.52	104.21	110.47
1	B	190	PRO	N-CA-C	-6.35	104.37	110.47
1	B	97	VAL	N-CA-C	5.91	114.38	107.77
1	A	169	MET	N-CA-C	5.82	118.40	111.71
1	A	152	PRO	N-CA-C	5.71	117.67	110.70
1	B	207	ASP	N-CA-C	-5.65	98.00	107.99
1	A	207	ASP	N-CA-C	-5.54	98.18	107.99
1	A	257	LEU	N-CA-C	-5.12	100.96	109.46

There are no chirality outliers.

There are no planarity outliers.

5.2 Too-close contacts

In the following table, the Non-H and H(model) columns list the number of non-hydrogen atoms and hydrogen atoms in the chain respectively. The H(added) column lists the number of hydrogen atoms added and optimized by MolProbity. The Clashes column lists the number of clashes within the asymmetric unit, whereas Symm-Clashes lists symmetry-related clashes.

Mol	Chain	Non-H	H(model)	H(added)	Clashes	Symm-Clashes
1	A	1549	0	1507	11	0
1	B	1570	0	1531	16	0
2	A	1	0	0	0	0
2	B	1	0	0	0	0
3	B	18	0	18	3	0
4	A	221	0	0	2	0
4	B	213	0	0	1	0
All	All	3573	0	3056	27	0

The all-atom clashscore is defined as the number of clashes found per 1000 atoms (including hydrogen atoms). The all-atom clashscore for this structure is 4.

All (27) close contacts within the same asymmetric unit are listed below, sorted by their clash magnitude.

Atom-1	Atom-2	Interatomic distance (Å)	Clash overlap (Å)
1:B:166:SER:HA	1:B:169:MET:HE3	1.46	0.95
1:A:248:ARG:HH11	1:A:248:ARG:HB2	1.52	0.74
1:B:169:MET:HE2	4:B:2076:HOH:O	1.97	0.64
1:B:150:THR:HG23	3:B:1291:P83:H6	1.78	0.64
1:B:252:LEU:HD23	1:B:271[B]:GLU:HG2	1.81	0.63
1:B:252:LEU:CD2	1:B:271[B]:GLU:HG2	2.28	0.63
1:A:97:VAL:HG11	1:A:169:MET:SD	2.41	0.60
1:A:185:SER:HA	4:A:2124:HOH:O	2.04	0.57
1:B:150:THR:HG23	3:B:1291:P83:C6	2.38	0.53
1:A:198:GLU:HG3	1:A:235:ASN:OD1	2.10	0.51
1:A:145:LEU:HB2	1:A:230[A]:THR:CG2	2.42	0.50
1:B:209:ARG:HG2	1:B:209:ARG:HH11	1.77	0.49
1:A:243:MET:SD	1:A:247:ASN:OD1	2.71	0.48
1:B:164:LYS:NZ	1:B:271[B]:GLU:OE1	2.42	0.47
1:A:136:GLN:HB2	1:A:139:LYS:HG3	1.97	0.47
1:B:157[A]:VAL:HG23	1:B:220[A]:CYS:HB2	1.96	0.47
1:B:256[B]:THR:HG23	1:B:264:LEU:HD12	1.95	0.47
1:A:175:ARG:HD3	1:A:191:PRO:O	2.15	0.46
1:B:256[B]:THR:HG23	1:B:264:LEU:CD1	2.47	0.45
1:B:175:ARG:HD3	1:B:191:PRO:O	2.17	0.44
1:A:248:ARG:HB2	1:A:248:ARG:NH1	2.29	0.43
1:A:202:ARG:HD2	4:A:2071:HOH:O	2.19	0.43
1:A:145:LEU:HB2	1:A:230[A]:THR:HG22	2.01	0.42
1:B:166:SER:CA	1:B:169:MET:HE3	2.33	0.41
1:B:220[B]:CYS:SG	3:B:1291:P83:H8	2.61	0.41
1:B:101:LYS:O	1:B:267:ARG:HD2	2.21	0.41
1:B:277[A]:CYS:SG	1:B:280:ARG:NH2	2.94	0.40

There are no symmetry-related clashes.

5.3 Torsion angles [i](#)

5.3.1 Protein backbone [i](#)

In the following table, the Percentiles column shows the percent Ramachandran outliers of the chain as a percentile score with respect to all X-ray entries followed by that with respect to entries of similar resolution.

The Analysed column shows the number of residues for which the backbone conformation was analysed, and the total number of residues.

Mol	Chain	Analysed	Favoured	Allowed	Outliers	Percentiles	
1	A	199/219 (91%)	198 (100%)	1 (0%)	0	100	100
1	B	203/219 (93%)	203 (100%)	0	0	100	100
All	All	402/438 (92%)	401 (100%)	1 (0%)	0	100	100

There are no Ramachandran outliers to report.

5.3.2 Protein sidechains [i](#)

In the following table, the Percentiles column shows the percent sidechain outliers of the chain as a percentile score with respect to all X-ray entries followed by that with respect to entries of similar resolution.

The Analysed column shows the number of residues for which the sidechain conformation was analysed, and the total number of residues.

Mol	Chain	Analysed	Rotameric	Outliers	Percentiles	
1	A	180/195 (92%)	178 (99%)	2 (1%)	65	41
1	B	184/195 (94%)	184 (100%)	0	100	100
All	All	364/390 (93%)	362 (100%)	2 (0%)	78	66

All (2) residues with a non-rotameric sidechain are listed below:

Mol	Chain	Res	Type
1	A	238	CYS
1	A	248	ARG

Sometimes sidechains can be flipped to improve hydrogen bonding and reduce clashes. All (5) such sidechains are listed below:

Mol	Chain	Res	Type
1	A	210	ASN
1	A	263	ASN
1	B	115	HIS
1	B	210	ASN
1	B	288	ASN

5.3.3 RNA [i](#)

There are no RNA molecules in this entry.

5.4 Non-standard residues in protein, DNA, RNA chains [i](#)

There are no non-standard protein/DNA/RNA residues in this entry.

5.5 Carbohydrates [i](#)

There are no oligosaccharides in this entry.

5.6 Ligand geometry [i](#)

Of 3 ligands modelled in this entry, 2 are monoatomic - leaving 1 for Mogul analysis.

In the following table, the Counts columns list the number of bonds (or angles) for which Mogul statistics could be retrieved, the number of bonds (or angles) that are observed in the model and the number of bonds (or angles) that are defined in the Chemical Component Dictionary. The Link column lists molecule types, if any, to which the group is linked. The Z score for a bond length (or angle) is the number of standard deviations the observed value is removed from the expected value. A bond length (or angle) with $|Z| > 2$ is considered an outlier worth inspection. RMSZ is the root-mean-square of all Z scores of the bond lengths (or angles).

Mol	Type	Chain	Res	Link	Bond lengths			Bond angles		
					Counts	RMSZ	$\# Z > 2$	Counts	RMSZ	$\# Z > 2$
3	P83	B	1291	-	20,20,20	1.88	8 (40%)	27,28,28	1.09	4 (14%)

In the following table, the Chirals column lists the number of chiral outliers, the number of chiral centers analysed, the number of these observed in the model and the number defined in the Chemical Component Dictionary. Similar counts are reported in the Torsion and Rings columns. '-' means no outliers of that kind were identified.

Mol	Type	Chain	Res	Link	Chirals	Torsions	Rings
3	P83	B	1291	-	-	0/5/5/5	0/3/3/3

All (8) bond length outliers are listed below:

Mol	Chain	Res	Type	Atoms	Z	Observed(Å)	Ideal(Å)
3	B	1291	P83	C4-C4A	3.11	1.44	1.39
3	B	1291	P83	C1-C9A	3.06	1.44	1.39
3	B	1291	P83	C2-C1	2.97	1.43	1.38
3	B	1291	P83	C5-C4B	2.84	1.44	1.40
3	B	1291	P83	C2-C3	2.60	1.44	1.38
3	B	1291	P83	C8-C8A	2.56	1.43	1.39
3	B	1291	P83	C7-C8	2.18	1.42	1.38
3	B	1291	P83	C6-C5	2.07	1.42	1.38

All (4) bond angle outliers are listed below:

Mol	Chain	Res	Type	Atoms	Z	Observed(°)	Ideal(°)
3	B	1291	P83	C4A-C9A-N9	-2.30	106.75	109.20
3	B	1291	P83	C9A-N9-C8A	2.26	110.80	108.43
3	B	1291	P83	C4B-C8A-N9	-2.15	106.92	109.20
3	B	1291	P83	C1-C9A-N9	2.14	132.06	129.08

There are no chirality outliers.

There are no torsion outliers.

There are no ring outliers.

1 monomer is involved in 3 short contacts:

Mol	Chain	Res	Type	Clashes	Symm-Clashes
3	B	1291	P83	3	0

5.7 Other polymers [i](#)

There are no such residues in this entry.

5.8 Polymer linkage issues [i](#)

There are no chain breaks in this entry.

6 Fit of model and data

6.1 Protein, DNA and RNA chains

In the following table, the column labelled ‘#RSRZ > 2’ contains the number (and percentage) of RSRZ outliers, followed by percent RSRZ outliers for the chain as percentile scores relative to all X-ray entries and entries of similar resolution. The OWAB column contains the minimum, median, 95th percentile and maximum values of the occupancy-weighted average B-factor per residue. The column labelled ‘Q < 0.9’ lists the number of (and percentage) of residues with an average occupancy less than 0.9.

Mol	Chain	Analysed	<RSRZ>	#RSRZ>2	OWAB(Å ²)	Q<0.9
1	A	195/219 (89%)	0.14	14 (7%) 21 23	6, 12, 28, 41	6 (3%)
1	B	196/219 (89%)	0.24	22 (11%) 10 10	5, 12, 30, 56	9 (4%)
All	All	391/438 (89%)	0.19	36 (9%) 14 15	5, 12, 29, 56	15 (3%)

All (36) RSRZ outliers are listed below:

Mol	Chain	Res	Type	RSRZ
1	B	187	GLY	5.5
1	B	225	VAL	5.0
1	A	226	GLY	4.6
1	B	226	GLY	4.0
1	B	290	ARG	4.0
1	A	183	SER	3.6
1	A	187	GLY	3.5
1	B	96	SER	3.2
1	A	209	ARG	3.2
1	A	225	VAL	3.0
1	B	120	LYS	2.9
1	B	224	GLU	2.8
1	B	209	ARG	2.8
1	B	166	SER	2.8
1	A	290	ARG	2.6
1	A	188	LEU	2.5
1	B	289	LEU	2.5
1	B	288	ASN	2.5
1	A	289	LEU	2.4
1	B	287	GLU	2.4
1	B	95	SER	2.3
1	B	186	ASP	2.3
1	B	284	THR	2.3
1	B	199	GLY	2.2

Continued on next page...

Continued from previous page...

Mol	Chain	Res	Type	RSRZ
1	B	188	LEU	2.2
1	A	288	ASN	2.2
1	A	185	SER	2.2
1	B	185	SER	2.2
1	B	201	LEU	2.2
1	A	223	PRO	2.2
1	B	121	SER	2.1
1	B	202	ARG	2.1
1	A	243	MET	2.1
1	B	243	MET	2.1
1	A	120	LYS	2.0
1	A	201	LEU	2.0

6.2 Non-standard residues in protein, DNA, RNA chains [i](#)

There are no non-standard protein/DNA/RNA residues in this entry.

6.3 Carbohydrates [i](#)

There are no oligosaccharides in this entry.

6.4 Ligands [i](#)

In the following table, the Atoms column lists the number of modelled atoms in the group and the number defined in the chemical component dictionary. The B-factors column lists the minimum, median, 95th percentile and maximum values of B factors of atoms in the group. The column labelled 'Q< 0.9' lists the number of atoms with occupancy less than 0.9.

Mol	Type	Chain	Res	Atoms	RSCC	RSR	B-factors(\AA^2)	Q<0.9
3	P83	B	1291	18/18	0.87	0.12	17,20,26,28	0
2	ZN	B	1300	1/1	1.00	0.01	9,9,9,9	0
2	ZN	A	1300	1/1	1.00	0.01	10,10,10,10	0

6.5 Other polymers [i](#)

There are no such residues in this entry.