



Full wwPDB X-ray Structure Validation Report ⓘ

Mar 6, 2026 – 06:08 AM UTC

PDB ID : 2ZML / pdb_00002zml
Title : Crystal structure of basic winged bean lectin in complex with Gal-ALPHA 1,4 Gal
Authors : Kulkarni, K.A.; Katiyar, S.; Surolia, A.; Vijayan, M.; Suguna, K.
Deposited on : 2008-04-19
Resolution : 2.65 Å(reported)

This is a Full wwPDB X-ray Structure Validation Report for a publicly released PDB entry.

We welcome your comments at validation@mail.wwpdb.org

A user guide is available at

<https://www.wwpdb.org/validation/2017/XrayValidationReportHelp>

with specific help available everywhere you see the ⓘ symbol.

The types of validation reports are described at

<http://www.wwpdb.org/validation/2017/FAQs#types>.

The following versions of software and data (see [references ⓘ](#)) were used in the production of this report:

MolProbity : 4-5-2 with Phenix2.0
Mogul : 2022.3.0, CSD as543be (2022)
Xtriage (Phenix) : 2.0
EDS : 3.0
Percentile statistics : 20250101.v01 (using entries in the PDB archive January 1st 2025)
CCP4 : 9.0.010 (Gargrove)
Density-Fitness : 1.0.12
Ideal geometry (proteins) : Engh & Huber (2001)
Ideal geometry (DNA, RNA) : Parkinson et al. (1996)
Validation Pipeline (wwPDB-VP) : 2.49

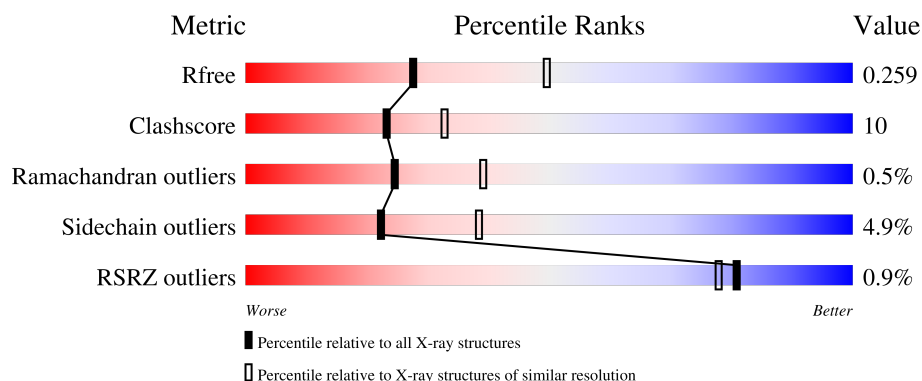
1 Overall quality at a glance

The following experimental techniques were used to determine the structure:

X-RAY DIFFRACTION

The reported resolution of this entry is 2.65 Å.

Percentile scores (ranging between 0-100) for global validation metrics of the entry are shown in the following graphic. The table shows the number of entries on which the scores are based.



Metric	Whole archive (#Entries)	Similar resolution (#Entries, resolution range(Å))
R_{free}	180053	1110 (2.66-2.66)
Clashscore	190562	1141 (2.66-2.66)
Ramachandran outliers	187476	1126 (2.66-2.66)
Sidechain outliers	187428	1126 (2.66-2.66)
RSRZ outliers	180081	1110 (2.66-2.66)

The table below summarises the geometric issues observed across the polymeric chains and their fit to the electron density. The red, orange, yellow and green segments of the lower bar indicate the fraction of residues that contain outliers for ≥ 3 , 2, 1 and 0 types of geometric quality criteria respectively. A grey segment represents the fraction of residues that are not modelled. The numeric value for each fraction is indicated below the corresponding segment, with a dot representing fractions $\leq 5\%$. The upper red bar (where present) indicates the fraction of residues that have poor fit to the electron density. The numeric value is given above the bar.

Mol	Chain	Length	Quality of chain
1	A	241	<div> <div>%</div> <div> <div></div> <div>71%</div> <div>24%</div> <div>..</div> </div> </div>
1	B	241	<div> <div>%</div> <div> <div></div> <div>72%</div> <div>24%</div> <div>..</div> </div> </div>
1	C	241	<div> <div>%</div> <div> <div></div> <div>72%</div> <div>24%</div> <div>..</div> </div> </div>
1	D	241	<div> <div>%</div> <div> <div></div> <div>69%</div> <div>26%</div> <div>..</div> </div> </div>
2	E	2	<div> <div></div> <div>100%</div> </div>

Continued on next page...

Continued from previous page...

Mol	Chain	Length	Quality of chain
2	G	2	<div><div></div><div>50%</div><div>50%</div></div>
2	J	2	<div><div></div><div>50%</div><div>50%</div></div>
2	L	2	<div><div></div><div>100%</div></div>
3	F	3	<div><div></div><div>33%</div><div>67%</div></div>
3	H	3	<div><div></div><div>100%</div></div>
3	K	3	<div><div></div><div>33%</div><div>67%</div></div>
4	I	2	<div><div></div><div>100%</div></div>

2 Entry composition [i](#)

There are 8 unique types of molecules in this entry. The entry contains 7715 atoms, of which 0 are hydrogens and 0 are deuteriums.

In the tables below, the ZeroOcc column contains the number of atoms modelled with zero occupancy, the AltConf column contains the number of residues with at least one atom in alternate conformation and the Trace column contains the number of residues modelled with at most 2 atoms.

- Molecule 1 is a protein called Basic agglutinin.

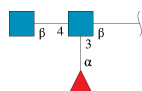
Mol	Chain	Residues	Atoms				ZeroOcc	AltConf	Trace
1	A	237	Total	C	N	O	0	0	0
			1820	1172	304	344			
1	B	237	Total	C	N	O	0	0	0
			1821	1173	303	345			
1	C	237	Total	C	N	O	0	0	0
			1819	1172	305	342			
1	D	237	Total	C	N	O	0	0	0
			1791	1153	295	343			

- Molecule 2 is an oligosaccharide called alpha-D-galactopyranose-(1-4)-alpha-D-galactopyranose.



Mol	Chain	Residues	Atoms			ZeroOcc	AltConf	Trace
2	E	2	Total	C	O	0	0	0
			23	12	11			
2	G	2	Total	C	O	0	0	0
			23	12	11			
2	J	2	Total	C	O	0	0	0
			23	12	11			
2	L	2	Total	C	O	0	0	0
			23	12	11			

- Molecule 3 is an oligosaccharide called alpha-L-fucopyranose-(1-3)-[2-acetamido-2-deoxy-beta-D-glucopyranose-(1-4)]2-acetamido-2-deoxy-beta-D-glucopyranose.



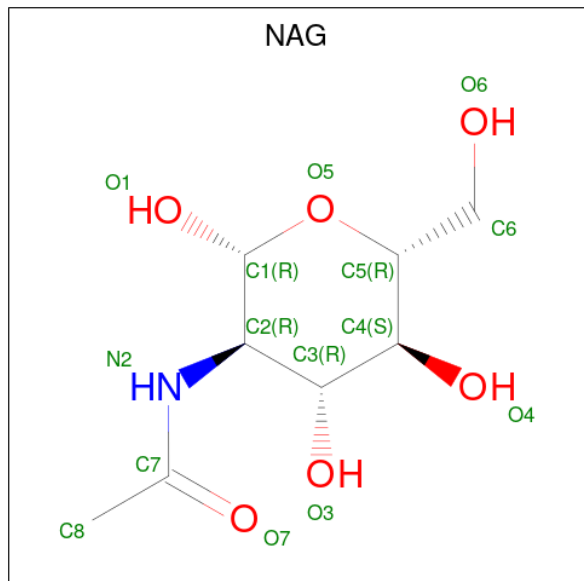
Mol	Chain	Residues	Atoms				ZeroOcc	AltConf	Trace
3	F	3	Total	C	N	O	0	0	0
			38	22	2	14			
3	H	3	Total	C	N	O	0	0	0
			38	22	2	14			
3	K	3	Total	C	N	O	0	0	0
			38	22	2	14			

- Molecule 4 is an oligosaccharide called alpha-L-fucopyranose-(1-3)-2-acetamido-2-deoxy-beta-D-glucopyranose.



Mol	Chain	Residues	Atoms				ZeroOcc	AltConf	Trace
4	I	2	Total	C	N	O	0	0	0
			24	14	1	9			

- Molecule 5 is 2-acetamido-2-deoxy-beta-D-glucopyranose (CCD ID: NAG) (formula: $C_8H_{15}NO_6$).



Mol	Chain	Residues	Atoms				ZeroOcc	AltConf
5	A	1	Total	C	N	O	0	0
			14	8	1	5		
5	C	1	Total	C	N	O	0	0
			14	8	1	5		

Continued on next page...

Continued from previous page...

Mol	Chain	Residues	Atoms				ZeroOcc	AltConf
5	D	1	Total	C	N	O	0	0
			14	8	1	5		

- Molecule 6 is MANGANESE (II) ION (CCD ID: MN) (formula: Mn).

Mol	Chain	Residues	Atoms		ZeroOcc	AltConf
6	A	1	Total	Mn	0	0
			1	1		
6	B	1	Total	Mn	0	0
			1	1		
6	C	1	Total	Mn	0	0
			1	1		
6	D	1	Total	Mn	0	0
			1	1		

- Molecule 7 is CALCIUM ION (CCD ID: CA) (formula: Ca).

Mol	Chain	Residues	Atoms		ZeroOcc	AltConf
7	A	1	Total	Ca	0	0
			1	1		
7	B	1	Total	Ca	0	0
			1	1		
7	C	1	Total	Ca	0	0
			1	1		
7	D	1	Total	Ca	0	0
			1	1		

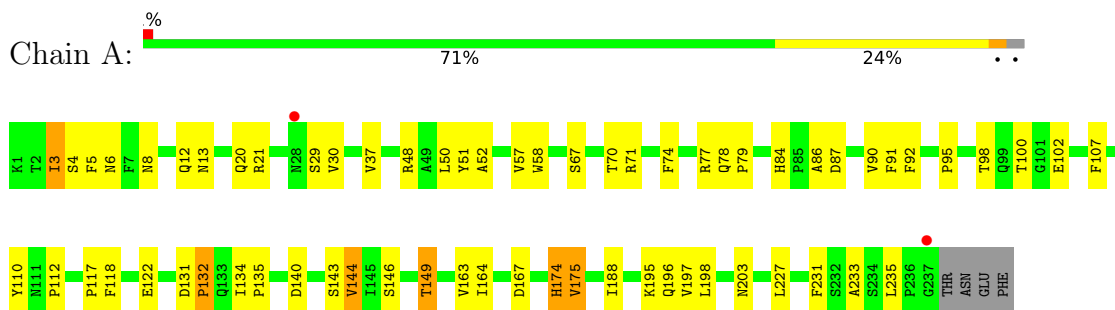
- Molecule 8 is water.

Mol	Chain	Residues	Atoms		ZeroOcc	AltConf
8	A	58	Total	O	0	0
			58	58		
8	B	45	Total	O	0	0
			45	45		
8	C	37	Total	O	0	0
			37	37		
8	D	44	Total	O	0	0
			44	44		

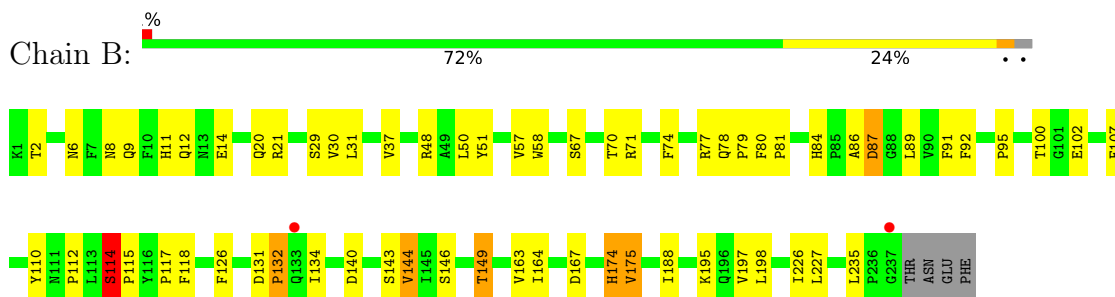
3 Residue-property plots [i](#)

These plots are drawn for all protein, RNA, DNA and oligosaccharide chains in the entry. The first graphic for a chain summarises the proportions of the various outlier classes displayed in the second graphic. The second graphic shows the sequence view annotated by issues in geometry and electron density. Residues are color-coded according to the number of geometric quality criteria for which they contain at least one outlier: green = 0, yellow = 1, orange = 2 and red = 3 or more. A red dot above a residue indicates a poor fit to the electron density ($RSRZ > 2$). Stretches of 2 or more consecutive residues without any outlier are shown as a green connector. Residues present in the sample, but not in the model, are shown in grey.

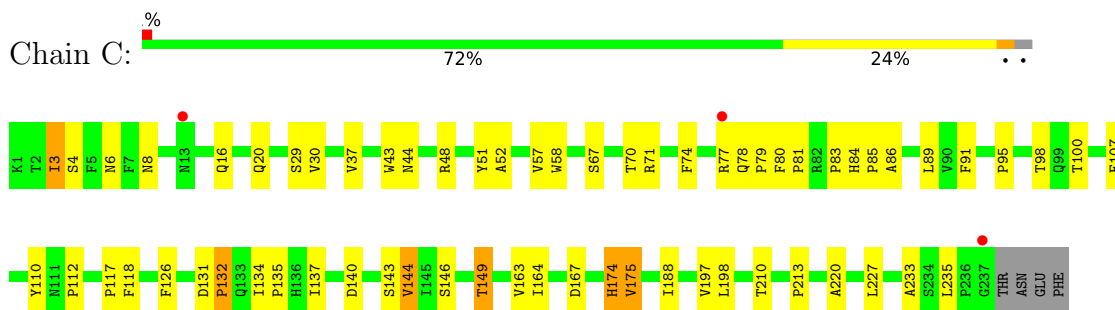
- Molecule 1: Basic agglutinin



- Molecule 1: Basic agglutinin

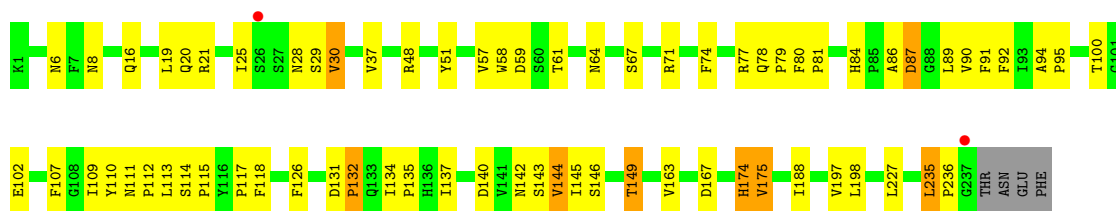


- Molecule 1: Basic agglutinin



- Molecule 1: Basic agglutinin





- Molecule 2: alpha-D-galactopyranose-(1-4)-alpha-D-galactopyranose

Chain E:  100%



- Molecule 2: alpha-D-galactopyranose-(1-4)-alpha-D-galactopyranose

Chain G:  50%

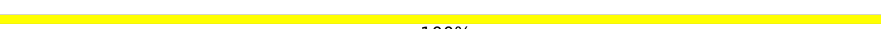


- Molecule 2: alpha-D-galactopyranose-(1-4)-alpha-D-galactopyranose

Chain J:  50%



- Molecule 2: alpha-D-galactopyranose-(1-4)-alpha-D-galactopyranose

Chain L:  100%



- Molecule 3: alpha-L-fucopyranose-(1-3)-[2-acetamido-2-deoxy-beta-D-glucopyranose-(1-4)]2-acetamido-2-deoxy-beta-D-glucopyranose

Chain F:  33%



- Molecule 3: alpha-L-fucopyranose-(1-3)-[2-acetamido-2-deoxy-beta-D-glucopyranose-(1-4)]2-acetamido-2-deoxy-beta-D-glucopyranose

Chain H:  100%



- Molecule 3: alpha-L-fucopyranose-(1-3)-[2-acetamido-2-deoxy-beta-D-glucopyranose-(1-4)]2-acetamido-2-deoxy-beta-D-glucopyranose

Chain K:  33% 67%

MAG1
FUC2
MAG3

- Molecule 4: alpha-L-fucopyranose-(1-3)-2-acetamido-2-deoxy-beta-D-glucopyranose

Chain I:  100%

MAG1
FUC2

4 Data and refinement statistics

Property	Value	Source
Space group	P 21 21 2	Depositor
Cell constants a, b, c, α , β , γ	157.93Å 91.52Å 73.65Å 90.00° 90.00° 90.00°	Depositor
Resolution (Å)	29.55 – 2.65 29.55 – 2.65	Depositor EDS
% Data completeness (in resolution range)	96.8 (29.55-2.65) 96.7 (29.55-2.65)	Depositor EDS
R_{merge}	0.12	Depositor
R_{sym}	0.12	Depositor
$\langle I/\sigma(I) \rangle$ ¹	3.29 (at 2.64Å)	Xtriage
Refinement program	CNS 1.1	Depositor
R, R_{free}	0.206 , 0.247 0.219 , 0.259	Depositor DCC
R_{free} test set	1468 reflections (4.77%)	wwPDB-VP
Wilson B-factor (Å ²)	27.5	Xtriage
Anisotropy	1.018	Xtriage
Bulk solvent k_{sol} (e/Å ³), B_{sol} (Å ²)	0.30 , 44.4	EDS
L-test for twinning ²	$\langle L \rangle = 0.49$, $\langle L^2 \rangle = 0.33$	Xtriage
Estimated twinning fraction	No twinning to report.	Xtriage
F_o, F_c correlation	0.93	EDS
Total number of atoms	7715	wwPDB-VP
Average B, all atoms (Å ²)	26.0	wwPDB-VP

Xtriage's analysis on translational NCS is as follows: *The largest off-origin peak in the Patterson function is 4.04% of the height of the origin peak. No significant pseudotranslation is detected.*

¹Intensities estimated from amplitudes.

²Theoretical values of $\langle |L| \rangle$, $\langle L^2 \rangle$ for acentric reflections are 0.5, 0.333 respectively for untwinned datasets, and 0.375, 0.2 for perfectly twinned datasets.

5 Model quality

5.1 Standard geometry

Bond lengths and bond angles in the following residue types are not validated in this section: NAG, FUC, CA, GLA, MN

The Z score for a bond length (or angle) is the number of standard deviations the observed value is removed from the expected value. A bond length (or angle) with $|Z| > 5$ is considered an outlier worth inspection. RMSZ is the root-mean-square of all Z scores of the bond lengths (or angles).

Mol	Chain	Bond lengths		Bond angles	
		RMSZ	$\# Z > 5$	RMSZ	$\# Z > 5$
1	A	0.47	0/1873	0.97	11/2566 (0.4%)
1	B	0.47	0/1874	1.00	14/2568 (0.5%)
1	C	0.43	0/1872	0.97	11/2565 (0.4%)
1	D	0.43	0/1843	1.00	14/2530 (0.6%)
All	All	0.45	0/7462	0.99	50/10229 (0.5%)

There are no bond length outliers.

All (50) bond angle outliers are listed below:

Mol	Chain	Res	Type	Atoms	Z	Observed(°)	Ideal(°)
1	A	29	SER	N-CA-C	8.93	123.48	112.58
1	B	29	SER	N-CA-C	7.51	122.40	113.23
1	D	80	PHE	CA-C-N	6.87	126.38	119.24
1	D	80	PHE	C-N-CA	6.87	126.38	119.24
1	B	91	PHE	N-CA-C	-6.74	98.22	109.07
1	D	91	PHE	N-CA-C	-6.61	98.42	109.07
1	A	131	ASP	N-CA-C	6.54	118.96	110.40
1	C	131	ASP	N-CA-C	6.52	118.95	110.40
1	D	131	ASP	N-CA-C	6.47	118.88	110.40
1	B	131	ASP	N-CA-C	6.42	118.81	110.40
1	C	29	SER	N-CA-C	6.38	121.01	113.23
1	B	114	SER	CA-C-N	5.96	126.15	119.90
1	B	114	SER	C-N-CA	5.96	126.15	119.90
1	C	51	TYR	N-CA-C	-5.65	101.49	109.96
1	D	67	SER	N-CA-C	-5.61	101.03	109.95
1	B	146	SER	N-CA-C	5.59	117.51	110.24
1	D	29	SER	N-CA-C	5.57	120.02	113.23
1	B	67	SER	N-CA-C	-5.54	101.15	109.95
1	D	51	TYR	N-CA-C	-5.52	101.68	109.96
1	B	132	PRO	N-CA-C	-5.47	101.21	112.47

Continued on next page...

Continued from previous page...

Mol	Chain	Res	Type	Atoms	Z	Observed(°)	Ideal(°)
1	B	51	TYR	N-CA-C	-5.46	101.76	109.96
1	A	67	SER	N-CA-C	-5.46	101.26	109.95
1	C	132	PRO	N-CA-C	-5.45	101.25	112.47
1	C	146	SER	N-CA-C	5.43	117.29	110.24
1	D	132	PRO	N-CA-C	-5.42	101.30	112.47
1	A	146	SER	N-CA-C	5.42	117.28	110.24
1	C	78	GLN	CA-C-N	5.42	125.06	119.05
1	C	78	GLN	C-N-CA	5.42	125.06	119.05
1	D	146	SER	N-CA-C	5.41	117.27	110.24
1	A	132	PRO	N-CA-C	-5.40	101.34	112.47
1	C	67	SER	N-CA-C	-5.37	101.41	109.95
1	A	52	ALA	N-CA-C	5.31	117.76	111.33
1	A	51	TYR	N-CA-C	-5.29	102.03	109.96
1	C	52	ALA	N-CA-C	5.26	117.70	111.33
1	A	78	GLN	CA-C-N	5.25	124.88	119.05
1	A	78	GLN	C-N-CA	5.25	124.88	119.05
1	A	91	PHE	N-CA-C	-5.24	100.71	109.24
1	D	78	GLN	CA-C-N	5.23	124.86	119.05
1	D	78	GLN	C-N-CA	5.23	124.86	119.05
1	B	80	PHE	CA-C-N	5.18	125.23	119.32
1	B	80	PHE	C-N-CA	5.18	125.23	119.32
1	B	78	GLN	CA-C-N	5.17	124.79	119.05
1	B	78	GLN	C-N-CA	5.17	124.79	119.05
1	C	91	PHE	N-CA-C	-5.15	100.12	108.52
1	B	21	ARG	CB-CA-C	-5.11	110.70	116.63
1	D	137	ILE	N-CA-C	-5.09	101.12	108.71
1	A	21	ARG	CB-CA-C	-5.07	110.75	116.63
1	D	92	PHE	N-CA-C	5.05	116.87	109.24
1	D	21	ARG	CB-CA-C	-5.03	110.76	116.54
1	C	137	ILE	N-CA-C	-5.01	101.24	108.71

There are no chirality outliers.

There are no planarity outliers.

5.2 Too-close contacts ⓘ

In the following table, the Non-H and H(model) columns list the number of non-hydrogen atoms and hydrogen atoms in the chain respectively. The H(added) column lists the number of hydrogen atoms added and optimized by MolProbity. The Clashes column lists the number of clashes within the asymmetric unit, whereas Symm-Clashes lists symmetry-related clashes.

Mol	Chain	Non-H	H(model)	H(added)	Clashes	Symm-Clashes
1	A	1820	0	1753	36	0
1	B	1821	0	1752	37	0
1	C	1819	0	1753	39	0
1	D	1791	0	1697	41	0
2	E	23	0	21	0	0
2	G	23	0	21	1	0
2	J	23	0	21	1	0
2	L	23	0	21	1	0
3	F	38	0	34	0	0
3	H	38	0	34	1	0
3	K	38	0	34	2	0
4	I	24	0	22	0	0
5	A	14	0	13	0	0
5	C	14	0	13	0	0
5	D	14	0	13	0	0
6	A	1	0	0	0	0
6	B	1	0	0	0	0
6	C	1	0	0	0	0
6	D	1	0	0	0	0
7	A	1	0	0	0	0
7	B	1	0	0	0	0
7	C	1	0	0	0	0
7	D	1	0	0	0	0
8	A	58	0	0	1	0
8	B	45	0	0	3	0
8	C	37	0	0	1	0
8	D	44	0	0	0	0
All	All	7715	0	7202	152	0

The all-atom clashscore is defined as the number of clashes found per 1000 atoms (including hydrogen atoms). The all-atom clashscore for this structure is 10.

All (152) close contacts within the same asymmetric unit are listed below, sorted by their clash magnitude.

Atom-1	Atom-2	Interatomic distance (Å)	Clash overlap (Å)
1:A:6:ASN:HD21	1:A:8:ASN:ND2	1.84	0.76
1:D:77:ARG:O	1:D:79:PRO:HD3	1.85	0.76
1:A:77:ARG:O	1:A:79:PRO:HD3	1.86	0.75
1:B:77:ARG:O	1:B:79:PRO:HD3	1.85	0.75
1:A:132:PRO:HG3	1:A:149:THR:HG21	1.71	0.72
1:A:196:GLN:HE22	1:D:145:ILE:HB	1.52	0.72
1:A:197:VAL:HG23	1:A:198:LEU:HG	1.70	0.72

Continued on next page...

Continued from previous page...

Atom-1	Atom-2	Interatomic distance (Å)	Clash overlap (Å)
1:D:197:VAL:HG23	1:D:198:LEU:HG	1.72	0.71
1:B:197:VAL:HG23	1:B:198:LEU:HG	1.71	0.71
1:A:6:ASN:HD21	1:A:8:ASN:HD21	1.36	0.71
1:C:77:ARG:O	1:C:79:PRO:HD3	1.88	0.71
1:C:197:VAL:HG23	1:C:198:LEU:HG	1.70	0.71
1:D:132:PRO:HG3	1:D:149:THR:HG21	1.73	0.70
1:C:132:PRO:HG3	1:C:149:THR:HG21	1.74	0.69
1:B:132:PRO:HG3	1:B:149:THR:HG21	1.74	0.68
1:A:196:GLN:NE2	1:D:145:ILE:HB	2.07	0.68
1:A:140:ASP:HB3	1:A:143:SER:O	1.94	0.67
1:D:6:ASN:HD21	1:D:8:ASN:ND2	1.93	0.67
1:D:140:ASP:HB3	1:D:143:SER:O	1.96	0.65
1:C:140:ASP:HB3	1:C:143:SER:O	1.96	0.65
1:B:140:ASP:HB3	1:B:143:SER:O	1.97	0.65
1:C:6:ASN:HD21	1:C:8:ASN:ND2	1.98	0.61
1:C:175:VAL:HG22	1:C:188:ILE:HG22	1.82	0.61
1:D:175:VAL:HG22	1:D:188:ILE:HG22	1.82	0.61
1:B:81:PRO:HG3	8:B:670:HOH:O	2.00	0.60
1:B:149:THR:HB	8:B:663:HOH:O	2.00	0.60
1:A:175:VAL:HG22	1:A:188:ILE:HG22	1.84	0.59
1:B:175:VAL:HG22	1:B:188:ILE:HG22	1.84	0.59
1:D:20:GLN:OE1	1:D:48:ARG:HD3	2.03	0.58
1:A:110:TYR:CE2	1:A:112:PRO:HG3	2.39	0.58
1:C:3:ILE:C	1:C:3:ILE:HD13	2.29	0.58
1:C:89:LEU:HD12	1:C:89:LEU:C	2.30	0.57
1:C:110:TYR:CE2	1:C:112:PRO:HG3	2.40	0.57
1:A:3:ILE:HD13	1:A:4:SER:N	2.19	0.57
1:D:90:VAL:HG21	1:D:109:ILE:HD13	1.87	0.56
1:B:110:TYR:CE2	1:B:112:PRO:HG3	2.39	0.56
1:D:110:TYR:CE2	1:D:112:PRO:HG3	2.41	0.56
1:B:89:LEU:C	1:B:89:LEU:HD12	2.31	0.56
1:D:113:LEU:C	1:D:115:PRO:HD3	2.31	0.55
1:B:84:HIS:O	1:B:84:HIS:HD2	1.90	0.54
1:C:95:PRO:O	1:C:98:THR:HG23	2.09	0.53
1:B:114:SER:N	1:B:115:PRO:HD3	2.23	0.52
1:B:84:HIS:O	1:B:84:HIS:CD2	2.63	0.52
1:B:2:THR:HG23	1:B:2:THR:O	2.10	0.51
1:D:126:PHE:CE2	2:L:2:GLA:H3	2.45	0.51
1:C:48:ARG:HD2	1:C:100:THR:OG1	2.09	0.51
3:H:1:NAG:O4	3:H:2:FUC:H5	2.11	0.51
1:C:3:ILE:HD13	1:C:4:SER:N	2.25	0.50

Continued on next page...

Continued from previous page...

Atom-1	Atom-2	Interatomic distance (Å)	Clash overlap (Å)
1:D:84:HIS:O	1:D:84:HIS:HD2	1.95	0.50
1:C:83:PRO:HD3	3:K:1:NAG:C8	2.43	0.49
1:D:64:ASN:HB3	1:D:236:PRO:HG2	1.94	0.49
1:D:79:PRO:O	1:D:81:PRO:HD3	2.11	0.49
1:B:6:ASN:HD21	1:B:8:ASN:ND2	2.11	0.49
1:D:134:ILE:C	1:D:134:ILE:HD12	2.38	0.49
1:D:84:HIS:O	1:D:84:HIS:CD2	2.66	0.48
1:C:134:ILE:C	1:C:134:ILE:HD12	2.39	0.48
1:A:5:PHE:CZ	1:A:231:PHE:HB3	2.49	0.48
1:B:57:VAL:HG23	1:B:58:TRP:HD1	1.79	0.48
1:C:16:GLN:NE2	1:C:16:GLN:HA	2.29	0.47
1:C:86:ALA:O	1:C:210:THR:HA	2.14	0.47
1:D:57:VAL:HG23	1:D:58:TRP:HD1	1.79	0.47
8:C:616:HOH:O	1:D:174:HIS:HB2	2.14	0.47
1:C:57:VAL:HG23	1:C:58:TRP:HD1	1.79	0.47
1:B:174:HIS:CD2	1:B:174:HIS:N	2.83	0.47
1:B:48:ARG:HD2	1:B:100:THR:OG1	2.15	0.47
1:B:134:ILE:HD12	1:B:134:ILE:C	2.40	0.47
1:A:57:VAL:HG23	1:A:58:TRP:HD1	1.81	0.46
1:A:134:ILE:C	1:A:134:ILE:HD12	2.41	0.46
1:B:126:PHE:CE2	2:G:2:GLA:H3	2.50	0.46
1:A:86:ALA:HB1	1:A:87:ASP:CG	2.40	0.46
1:D:113:LEU:O	1:D:115:PRO:HD3	2.15	0.46
1:A:71:ARG:HG2	1:A:163:VAL:HG22	1.97	0.46
1:B:58:TRP:CE3	1:B:195:LYS:HG3	2.50	0.46
1:B:95:PRO:HD3	1:B:117:PRO:O	2.16	0.46
1:C:84:HIS:O	1:C:220:ALA:HA	2.16	0.46
1:D:235:LEU:O	1:D:236:PRO:C	2.59	0.46
1:C:71:ARG:HG2	1:C:163:VAL:HG22	1.98	0.46
1:D:174:HIS:N	1:D:174:HIS:CD2	2.83	0.46
1:A:3:ILE:HG22	1:A:233:ALA:HB3	1.98	0.46
1:A:70:THR:HG22	1:A:164:ILE:HB	1.98	0.46
1:A:20:GLN:OE1	1:A:48:ARG:HD3	2.16	0.45
1:C:174:HIS:N	1:C:174:HIS:CD2	2.84	0.45
1:D:227:LEU:CD1	1:D:227:LEU:N	2.79	0.45
1:B:227:LEU:CD1	1:B:227:LEU:N	2.80	0.45
1:B:71:ARG:HG2	1:B:163:VAL:HG22	1.99	0.45
1:B:144:VAL:HG13	8:B:646:HOH:O	2.16	0.45
1:C:20:GLN:OE1	1:C:48:ARG:HD3	2.16	0.45
1:A:174:HIS:CD2	1:A:174:HIS:N	2.85	0.45
1:D:134:ILE:HD12	1:D:134:ILE:O	2.17	0.45

Continued on next page...

Continued from previous page...

Atom-1	Atom-2	Interatomic distance (Å)	Clash overlap (Å)
1:A:86:ALA:HB1	1:A:87:ASP:OD1	2.17	0.45
1:C:83:PRO:HD3	3:K:1:NAG:H81	1.99	0.44
1:D:48:ARG:HD2	1:D:100:THR:OG1	2.16	0.44
1:B:70:THR:HG22	1:B:164:ILE:HB	1.99	0.44
1:C:134:ILE:HD12	1:C:134:ILE:O	2.17	0.44
1:A:74:PHE:C	1:A:74:PHE:CD1	2.94	0.44
1:A:95:PRO:HD3	1:A:117:PRO:O	2.16	0.44
1:B:74:PHE:C	1:B:74:PHE:CD1	2.94	0.44
1:C:95:PRO:HD3	1:C:117:PRO:O	2.18	0.44
1:A:37:VAL:HG23	1:A:37:VAL:O	2.18	0.44
1:D:28:ASN:OD1	1:D:30:VAL:HG13	2.18	0.44
1:C:80:PHE:HA	1:C:81:PRO:HD2	1.90	0.43
1:A:227:LEU:CD1	1:A:227:LEU:N	2.81	0.43
1:B:144:VAL:O	1:B:144:VAL:CG1	2.66	0.43
1:D:144:VAL:O	1:D:144:VAL:CG1	2.66	0.43
1:A:90:VAL:HG12	1:A:122:GLU:HA	1.99	0.43
1:C:74:PHE:CD1	1:C:74:PHE:C	2.96	0.43
1:D:74:PHE:CD1	1:D:74:PHE:C	2.95	0.43
1:A:58:TRP:CE3	1:A:195:LYS:HG3	2.53	0.43
1:B:86:ALA:HA	1:B:87:ASP:HA	1.85	0.43
1:D:89:LEU:C	1:D:89:LEU:HD12	2.44	0.43
1:D:111:ASN:ND2	1:D:114:SER:H	2.17	0.43
1:B:37:VAL:O	1:B:37:VAL:HG23	2.19	0.43
1:A:144:VAL:O	1:A:144:VAL:CG1	2.67	0.42
1:B:50:LEU:HD11	1:B:92:PHE:CZ	2.54	0.42
1:C:37:VAL:O	1:C:37:VAL:HG23	2.19	0.42
1:B:11:HIS:O	1:B:14:GLU:HG2	2.18	0.42
1:B:20:GLN:OE1	1:B:48:ARG:HD3	2.18	0.42
1:D:71:ARG:HG2	1:D:163:VAL:HG22	2.01	0.42
1:A:12:GLN:O	1:A:13:ASN:HB2	2.19	0.42
1:A:50:LEU:HD11	1:A:92:PHE:CZ	2.55	0.42
1:A:118:PHE:C	1:A:118:PHE:CD1	2.97	0.42
1:A:203:ASN:HA	8:A:612:HOH:O	2.18	0.42
1:D:134:ILE:HB	1:D:135:PRO:HA	2.01	0.42
1:A:134:ILE:HD12	1:A:134:ILE:O	2.20	0.42
1:D:37:VAL:O	1:D:37:VAL:HG23	2.19	0.42
1:B:118:PHE:CD1	1:B:118:PHE:C	2.98	0.42
1:C:134:ILE:HB	1:C:135:PRO:HA	2.01	0.42
1:B:134:ILE:HD12	1:B:134:ILE:O	2.20	0.42
1:C:227:LEU:N	1:C:227:LEU:CD1	2.82	0.42
1:B:31:LEU:HB3	1:B:226:ILE:HB	2.01	0.42

Continued on next page...

Continued from previous page...

Atom-1	Atom-2	Interatomic distance (Å)	Clash overlap (Å)
1:C:48:ARG:HD2	1:C:100:THR:HA	2.01	0.41
1:A:134:ILE:HB	1:A:135:PRO:HA	2.01	0.41
1:B:174:HIS:CD2	1:B:174:HIS:H	2.38	0.41
1:C:84:HIS:HA	1:C:85:PRO:HD3	1.88	0.41
1:D:94:ALA:HB1	1:D:95:PRO:CD	2.50	0.41
1:C:126:PHE:CE2	2:J:2:GLA:H3	2.55	0.41
1:D:118:PHE:CD1	1:D:118:PHE:C	2.99	0.41
1:C:43:TRP:CD1	1:C:43:TRP:C	2.98	0.41
1:D:86:ALA:HA	1:D:87:ASP:HA	1.91	0.41
1:C:70:THR:HG22	1:C:164:ILE:HB	2.02	0.41
1:C:118:PHE:CD1	1:C:118:PHE:C	2.98	0.41
1:D:174:HIS:CD2	1:D:174:HIS:H	2.39	0.41
1:B:70:THR:CG2	1:B:164:ILE:HB	2.51	0.41
1:C:144:VAL:O	1:C:144:VAL:CG1	2.67	0.41
1:D:19:LEU:HD21	1:D:25:ILE:HG13	2.03	0.41
1:D:59:ASP:OD2	1:D:61:THR:HB	2.21	0.41
1:D:117:PRO:HA	1:D:142:ASN:OD1	2.20	0.41
1:C:174:HIS:CD2	1:C:174:HIS:H	2.40	0.40
1:A:48:ARG:HD2	1:A:100:THR:OG1	2.22	0.40
1:A:95:PRO:O	1:A:98:THR:HG23	2.22	0.40
1:C:3:ILE:CG2	1:C:233:ALA:HB3	2.52	0.40
1:C:44:ASN:HB2	1:C:213:PRO:HG3	2.03	0.40

There are no symmetry-related clashes.

5.3 Torsion angles [i](#)

5.3.1 Protein backbone [i](#)

In the following table, the Percentiles column shows the percent Ramachandran outliers of the chain as a percentile score with respect to all X-ray entries followed by that with respect to entries of similar resolution.

The Analysed column shows the number of residues for which the backbone conformation was analysed, and the total number of residues.

Mol	Chain	Analysed	Favoured	Allowed	Outliers	Percentiles	
1	A	235/241 (98%)	225 (96%)	9 (4%)	1 (0%)	30	45
1	B	235/241 (98%)	224 (95%)	9 (4%)	2 (1%)	14	24
1	C	235/241 (98%)	225 (96%)	9 (4%)	1 (0%)	30	45

Continued on next page...

Continued from previous page...

Mol	Chain	Analysed	Favoured	Allowed	Outliers	Percentiles	
1	D	235/241 (98%)	221 (94%)	13 (6%)	1 (0%)	30	45
All	All	940/964 (98%)	895 (95%)	40 (4%)	5 (0%)	24	39

All (5) Ramachandran outliers are listed below:

Mol	Chain	Res	Type
1	B	114	SER
1	D	107	PHE
1	A	107	PHE
1	B	107	PHE
1	C	107	PHE

5.3.2 Protein sidechains ⓘ

In the following table, the Percentiles column shows the percent sidechain outliers of the chain as a percentile score with respect to all X-ray entries followed by that with respect to entries of similar resolution.

The Analysed column shows the number of residues for which the sidechain conformation was analysed, and the total number of residues.

Mol	Chain	Analysed	Rotameric	Outliers	Percentiles	
1	A	199/210 (95%)	189 (95%)	10 (5%)	22	37
1	B	199/210 (95%)	188 (94%)	11 (6%)	19	33
1	C	198/210 (94%)	190 (96%)	8 (4%)	28	47
1	D	193/210 (92%)	183 (95%)	10 (5%)	21	36
All	All	789/840 (94%)	750 (95%)	39 (5%)	22	38

All (39) residues with a non-rotameric sidechain are listed below:

Mol	Chain	Res	Type
1	A	3	ILE
1	A	30	VAL
1	A	84	HIS
1	A	102	GLU
1	A	144	VAL
1	A	149	THR
1	A	167	ASP
1	A	174	HIS
1	A	175	VAL

Continued on next page...

Continued from previous page...

Mol	Chain	Res	Type
1	A	235	LEU
1	B	9	GLN
1	B	12	GLN
1	B	30	VAL
1	B	87	ASP
1	B	102	GLU
1	B	144	VAL
1	B	149	THR
1	B	167	ASP
1	B	174	HIS
1	B	175	VAL
1	B	235	LEU
1	C	3	ILE
1	C	30	VAL
1	C	144	VAL
1	C	149	THR
1	C	167	ASP
1	C	174	HIS
1	C	175	VAL
1	C	235	LEU
1	D	16	GLN
1	D	30	VAL
1	D	87	ASP
1	D	102	GLU
1	D	144	VAL
1	D	149	THR
1	D	167	ASP
1	D	174	HIS
1	D	175	VAL
1	D	235	LEU

Sometimes sidechains can be flipped to improve hydrogen bonding and reduce clashes. All (37) such sidechains are listed below:

Mol	Chain	Res	Type
1	A	8	ASN
1	A	12	GLN
1	A	64	ASN
1	A	78	GLN
1	A	84	HIS
1	A	97	ASN
1	A	99	GLN
1	A	196	GLN

Continued on next page...

Continued from previous page...

Mol	Chain	Res	Type
1	A	203	ASN
1	A	217	GLN
1	B	8	ASN
1	B	9	GLN
1	B	12	GLN
1	B	38	ASN
1	B	64	ASN
1	B	78	GLN
1	B	84	HIS
1	B	97	ASN
1	B	203	ASN
1	C	8	ASN
1	C	16	GLN
1	C	38	ASN
1	C	64	ASN
1	C	78	GLN
1	C	84	HIS
1	C	97	ASN
1	C	111	ASN
1	C	196	GLN
1	C	203	ASN
1	D	8	ASN
1	D	16	GLN
1	D	38	ASN
1	D	78	GLN
1	D	84	HIS
1	D	99	GLN
1	D	111	ASN
1	D	203	ASN

5.3.3 RNA ⓘ

There are no RNA molecules in this entry.

5.4 Non-standard residues in protein, DNA, RNA chains ⓘ

There are no non-standard protein/DNA/RNA residues in this entry.

5.5 Carbohydrates ⓘ

19 monosaccharides are modelled in this entry.

In the following table, the Counts columns list the number of bonds (or angles) for which Mogul statistics could be retrieved, the number of bonds (or angles) that are observed in the model and the number of bonds (or angles) that are defined in the Chemical Component Dictionary. The Link column lists molecule types, if any, to which the group is linked. The Z score for a bond length (or angle) is the number of standard deviations the observed value is removed from the expected value. A bond length (or angle) with $|Z| > 2$ is considered an outlier worth inspection. RMSZ is the root-mean-square of all Z scores of the bond lengths (or angles).

Mol	Type	Chain	Res	Link	Bond lengths			Bond angles		
					Counts	RMSZ	$\# Z > 2$	Counts	RMSZ	$\# Z > 2$
2	GLA	E	1	2	12,12,12	0.99	0	17,17,17	0.92	0
2	GLA	E	2	2	11,11,12	0.87	0	15,15,17	0.69	0
3	NAG	F	1	1,3	14,14,15	0.51	0	17,19,21	0.80	1 (5%)
3	FUC	F	2	3	10,10,11	0.60	0	14,14,16	0.51	0
3	NAG	F	3	3	14,14,15	0.51	0	17,19,21	0.78	1 (5%)
2	GLA	G	1	2	12,12,12	0.84	0	17,17,17	0.81	0
2	GLA	G	2	2	11,11,12	0.82	0	15,15,17	0.76	0
3	NAG	H	1	1,3	14,14,15	0.48	0	17,19,21	0.71	0
3	FUC	H	2	3	10,10,11	0.53	0	14,14,16	0.29	0
3	NAG	H	3	3	14,14,15	0.58	0	17,19,21	0.73	1 (5%)
4	NAG	I	1	4,1	14,14,15	0.76	0	17,19,21	0.79	0
4	FUC	I	2	4	10,10,11	0.52	0	14,14,16	0.33	0
2	GLA	J	1	2	12,12,12	0.94	0	17,17,17	0.90	0
2	GLA	J	2	2	11,11,12	0.83	0	15,15,17	0.70	0
3	NAG	K	1	1,3	14,14,15	0.66	0	17,19,21	0.76	0
3	FUC	K	2	3	10,10,11	0.51	0	14,14,16	0.30	0
3	NAG	K	3	3	14,14,15	0.48	0	17,19,21	0.73	1 (5%)
2	GLA	L	1	2	12,12,12	1.15	1 (8%)	17,17,17	0.89	1 (5%)
2	GLA	L	2	2	11,11,12	1.12	0	15,15,17	0.72	0

In the following table, the Chirals column lists the number of chiral outliers, the number of chiral centers analysed, the number of these observed in the model and the number defined in the Chemical Component Dictionary. Similar counts are reported in the Torsion and Rings columns. '-' means no outliers of that kind were identified.

Mol	Type	Chain	Res	Link	Chirals	Torsions	Rings
2	GLA	E	1	2	-	0/2/22/22	0/1/1/1
2	GLA	E	2	2	-	0/2/19/22	0/1/1/1
3	NAG	F	1	1,3	-	0/6/23/26	0/1/1/1
3	FUC	F	2	3	-	-	0/1/1/1
3	NAG	F	3	3	-	4/6/23/26	0/1/1/1
2	GLA	G	1	2	-	0/2/22/22	0/1/1/1
2	GLA	G	2	2	-	0/2/19/22	0/1/1/1

Continued on next page...

Continued from previous page...

Mol	Type	Chain	Res	Link	Chirals	Torsions	Rings
3	NAG	H	1	1,3	-	4/6/23/26	0/1/1/1
3	FUC	H	2	3	-	-	0/1/1/1
3	NAG	H	3	3	-	2/6/23/26	0/1/1/1
4	NAG	I	1	4,1	-	2/6/23/26	0/1/1/1
4	FUC	I	2	4	-	-	0/1/1/1
2	GLA	J	1	2	-	0/2/22/22	0/1/1/1
2	GLA	J	2	2	-	0/2/19/22	0/1/1/1
3	NAG	K	1	1,3	-	2/6/23/26	0/1/1/1
3	FUC	K	2	3	-	-	0/1/1/1
3	NAG	K	3	3	-	0/6/23/26	0/1/1/1
2	GLA	L	1	2	-	0/2/22/22	0/1/1/1
2	GLA	L	2	2	-	0/2/19/22	0/1/1/1

All (1) bond length outliers are listed below:

Mol	Chain	Res	Type	Atoms	Z	Observed(Å)	Ideal(Å)
2	L	1	GLA	C4-C5	2.06	1.57	1.53

All (5) bond angle outliers are listed below:

Mol	Chain	Res	Type	Atoms	Z	Observed(°)	Ideal(°)
3	F	1	NAG	C2-N2-C7	-2.61	119.40	122.90
3	F	3	NAG	C2-N2-C7	-2.35	119.75	122.90
3	K	3	NAG	C2-N2-C7	-2.26	119.87	122.90
3	H	3	NAG	C2-N2-C7	-2.15	120.02	122.90
2	L	1	GLA	C3-C4-C5	-2.04	106.53	110.23

There are no chirality outliers.

All (14) torsion outliers are listed below:

Mol	Chain	Res	Type	Atoms
3	H	3	NAG	C8-C7-N2-C2
3	H	3	NAG	O7-C7-N2-C2
3	K	1	NAG	C8-C7-N2-C2
3	K	1	NAG	O7-C7-N2-C2
3	F	3	NAG	C8-C7-N2-C2
3	F	3	NAG	O7-C7-N2-C2
3	F	3	NAG	C4-C5-C6-O6
3	H	1	NAG	C8-C7-N2-C2
3	F	3	NAG	O5-C5-C6-O6

Continued on next page...

Continued from previous page...

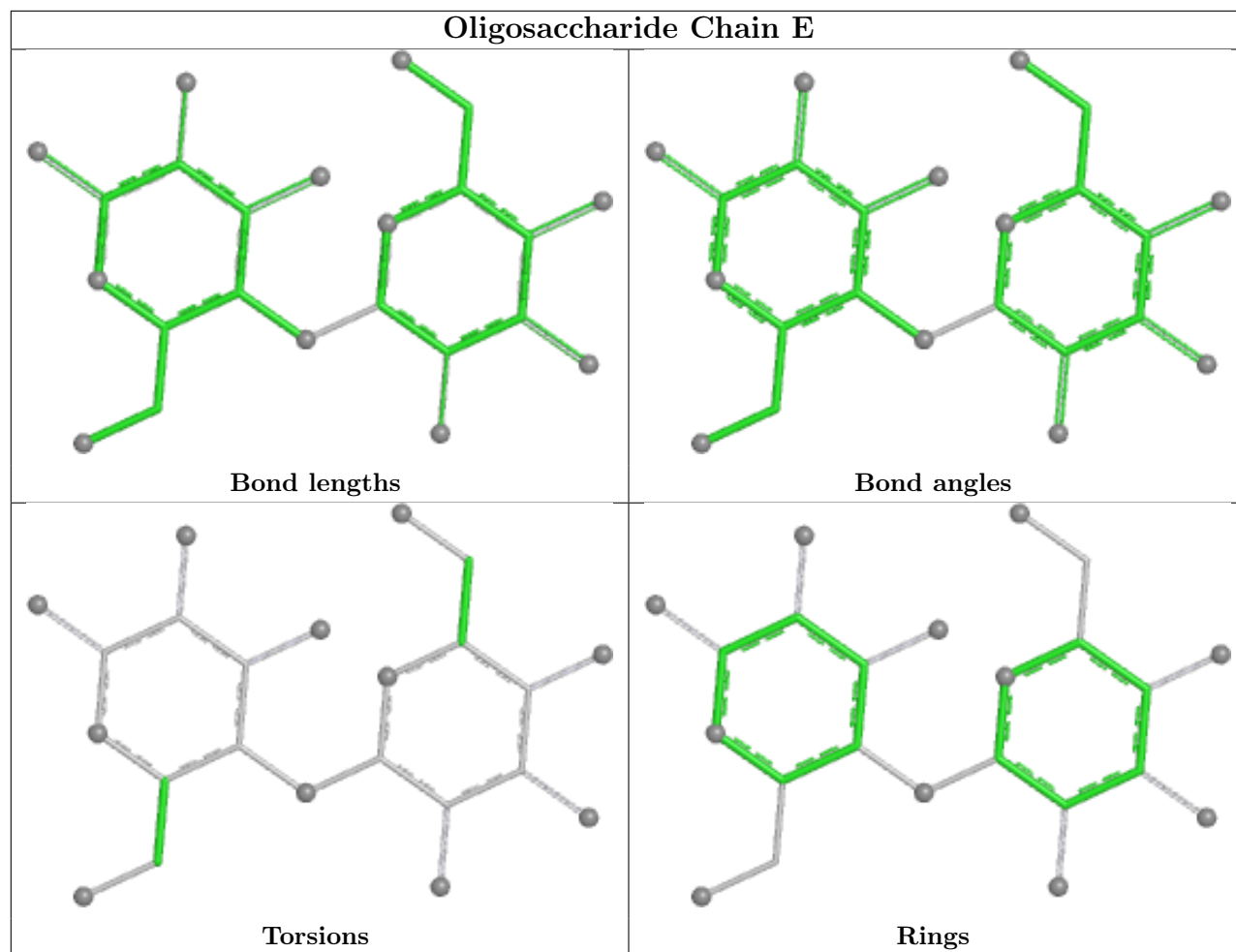
Mol	Chain	Res	Type	Atoms
3	H	1	NAG	O7-C7-N2-C2
4	I	1	NAG	C4-C5-C6-O6
4	I	1	NAG	O5-C5-C6-O6
3	H	1	NAG	C4-C5-C6-O6
3	H	1	NAG	O5-C5-C6-O6

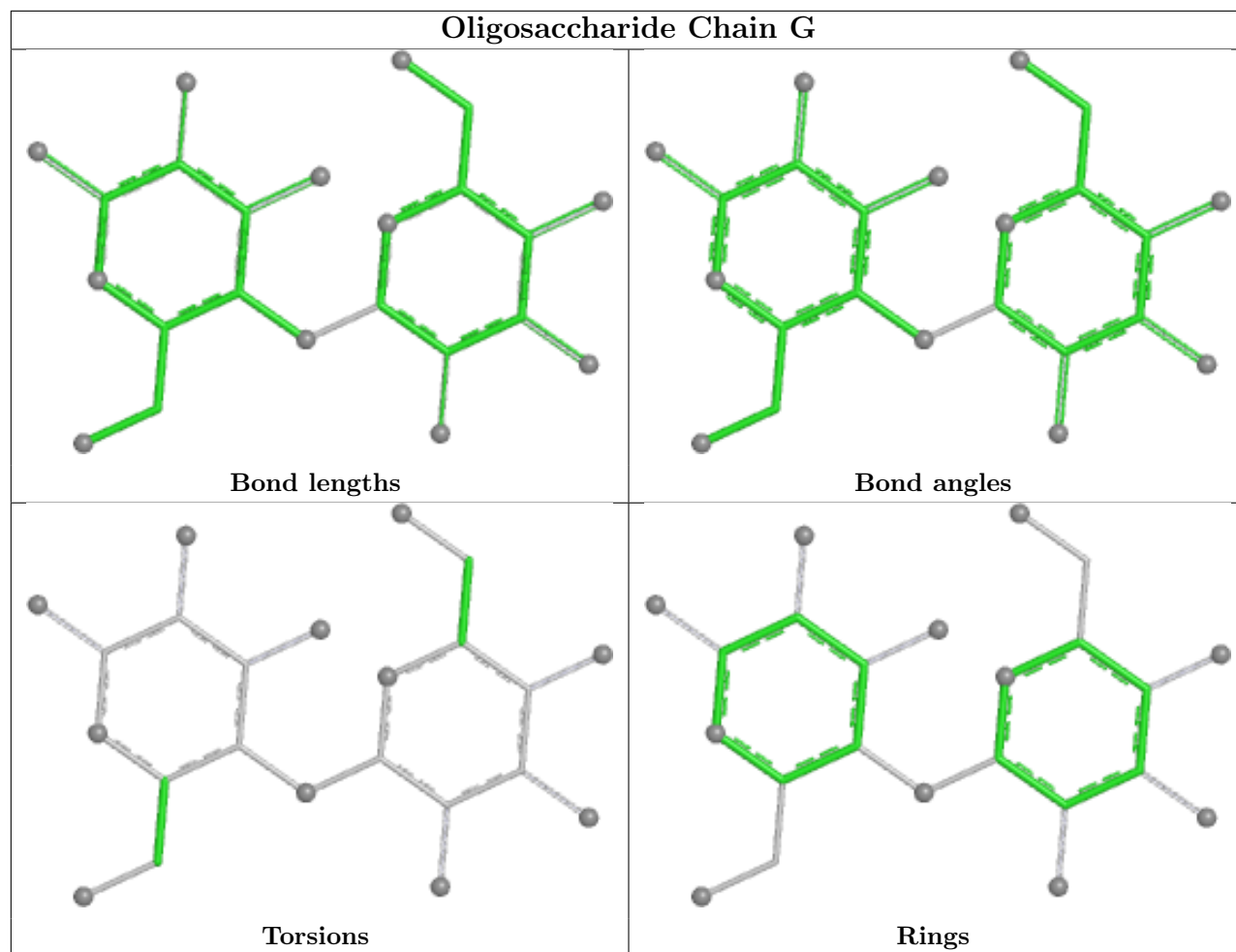
There are no ring outliers.

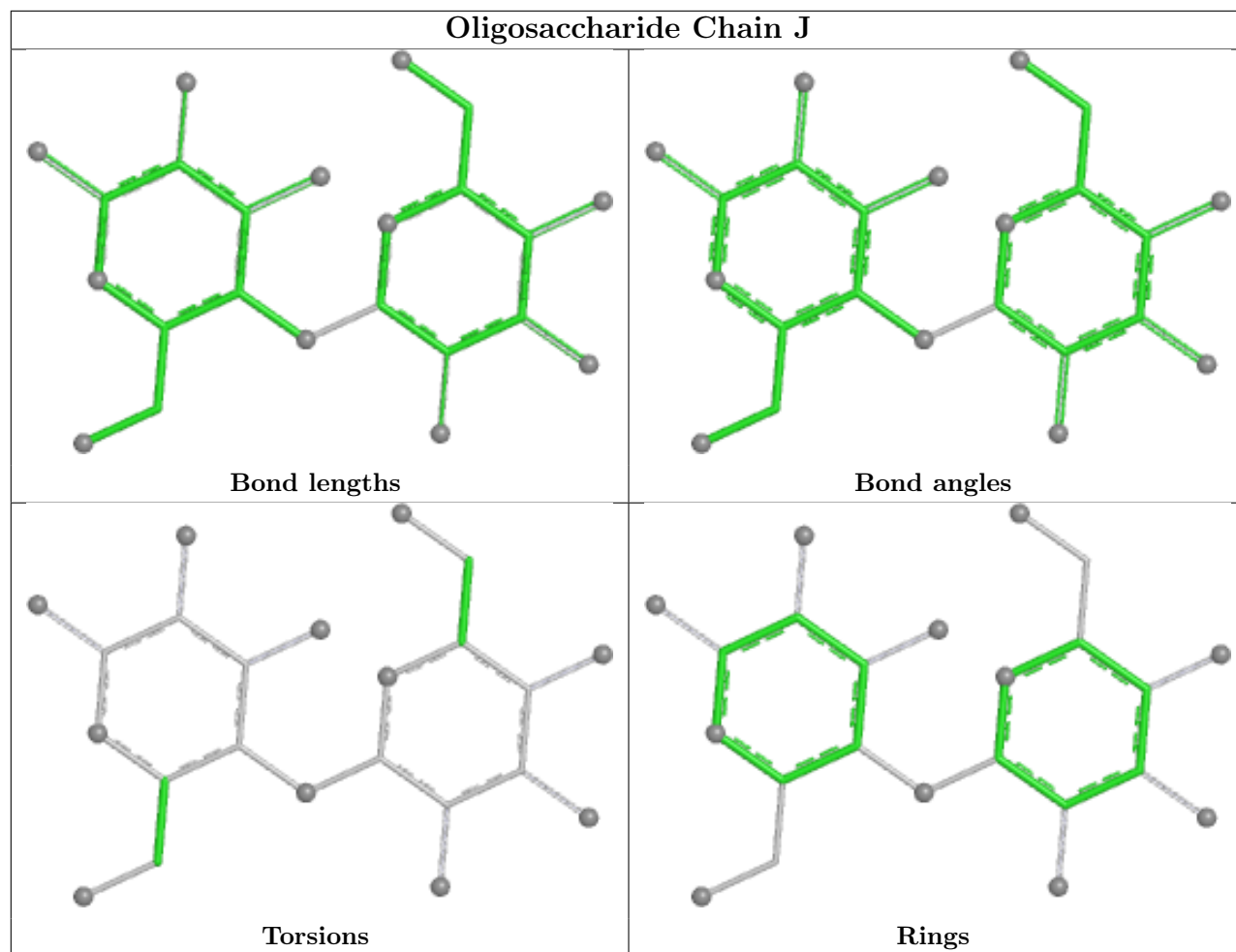
6 monomers are involved in 6 short contacts:

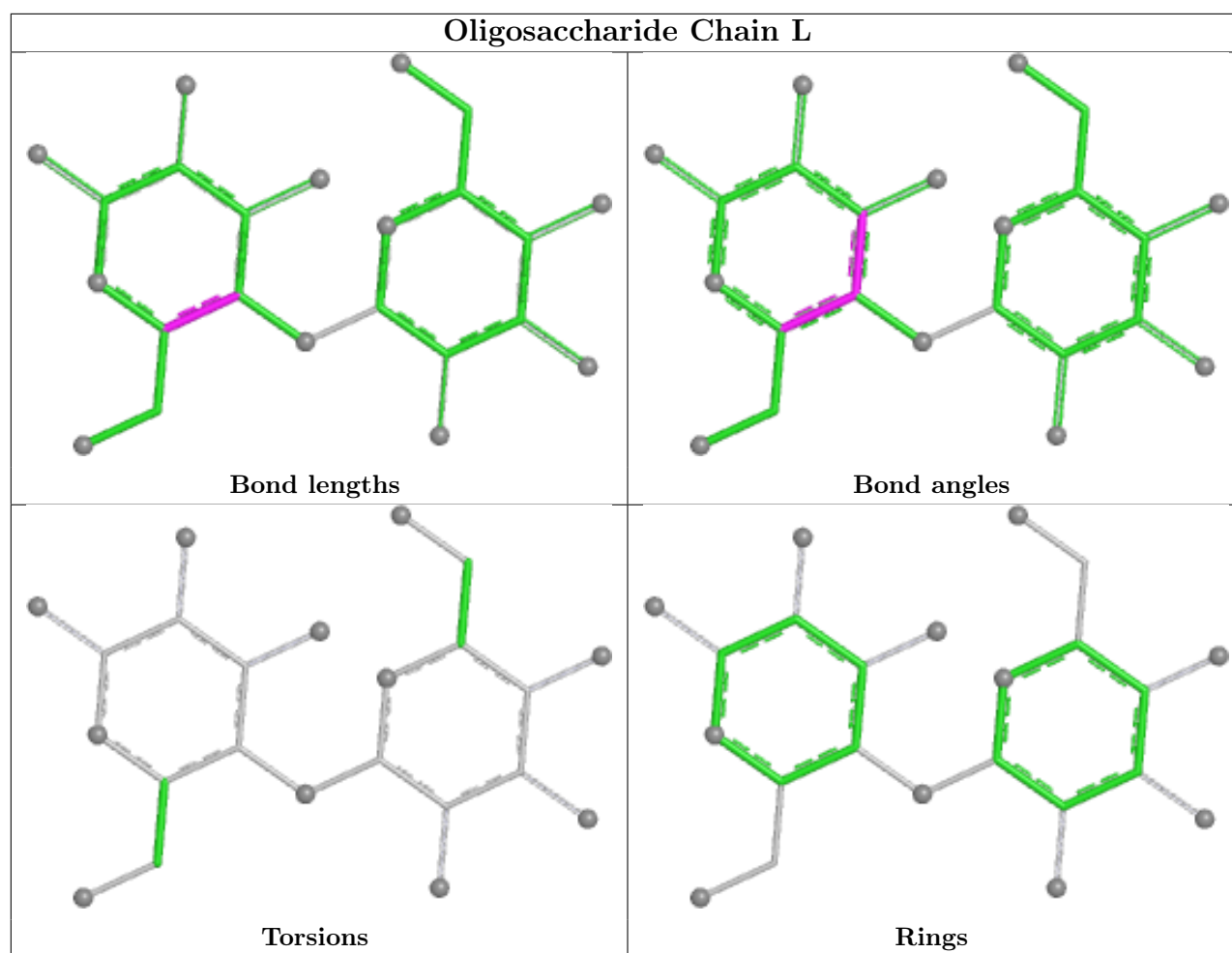
Mol	Chain	Res	Type	Clashes	Symm-Clashes
3	K	1	NAG	2	0
2	L	2	GLA	1	0
3	H	1	NAG	1	0
2	J	2	GLA	1	0
2	G	2	GLA	1	0
3	H	2	FUC	1	0

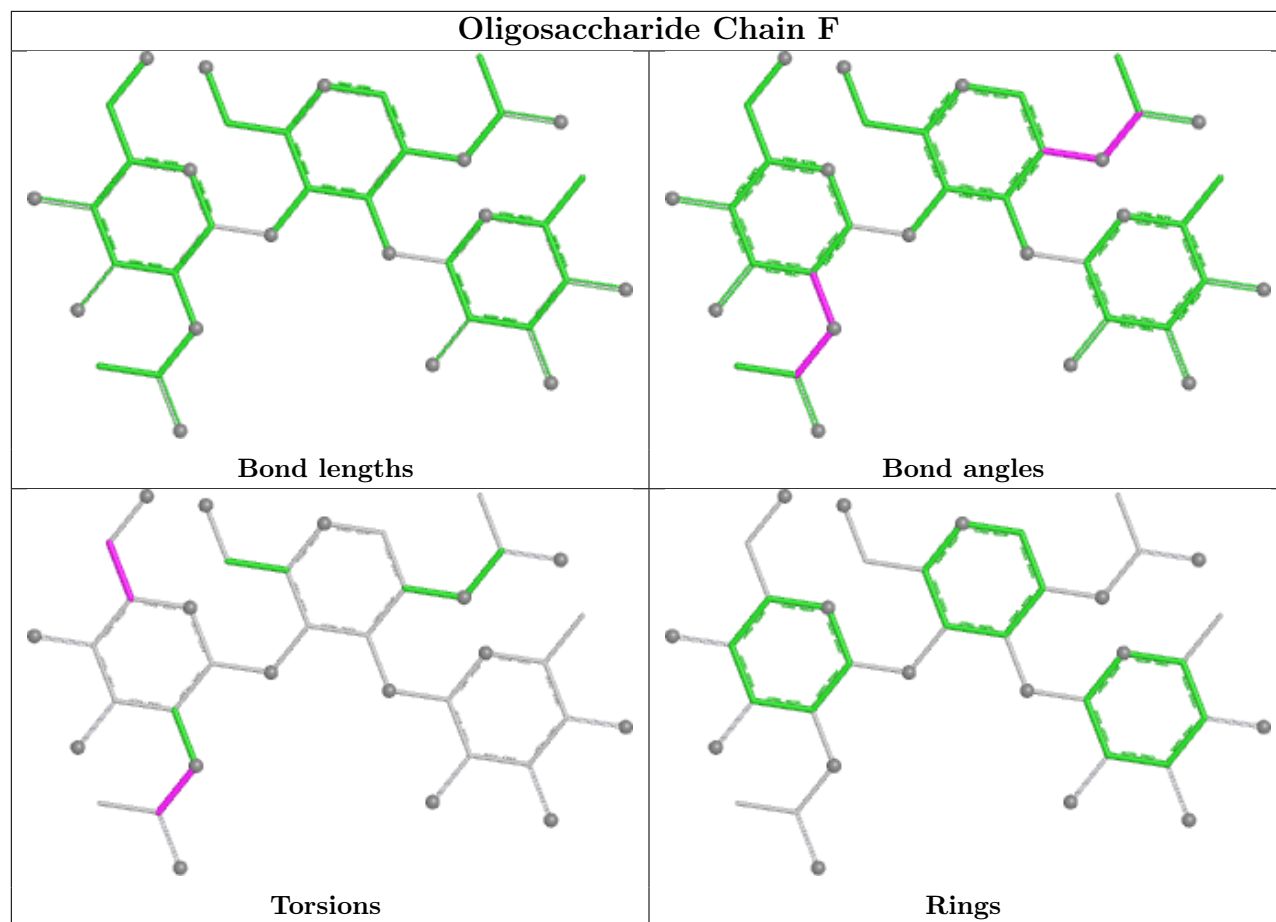
The following is a two-dimensional graphical depiction of Mogul quality analysis of bond lengths, bond angles, torsion angles, and ring geometry for oligosaccharide.

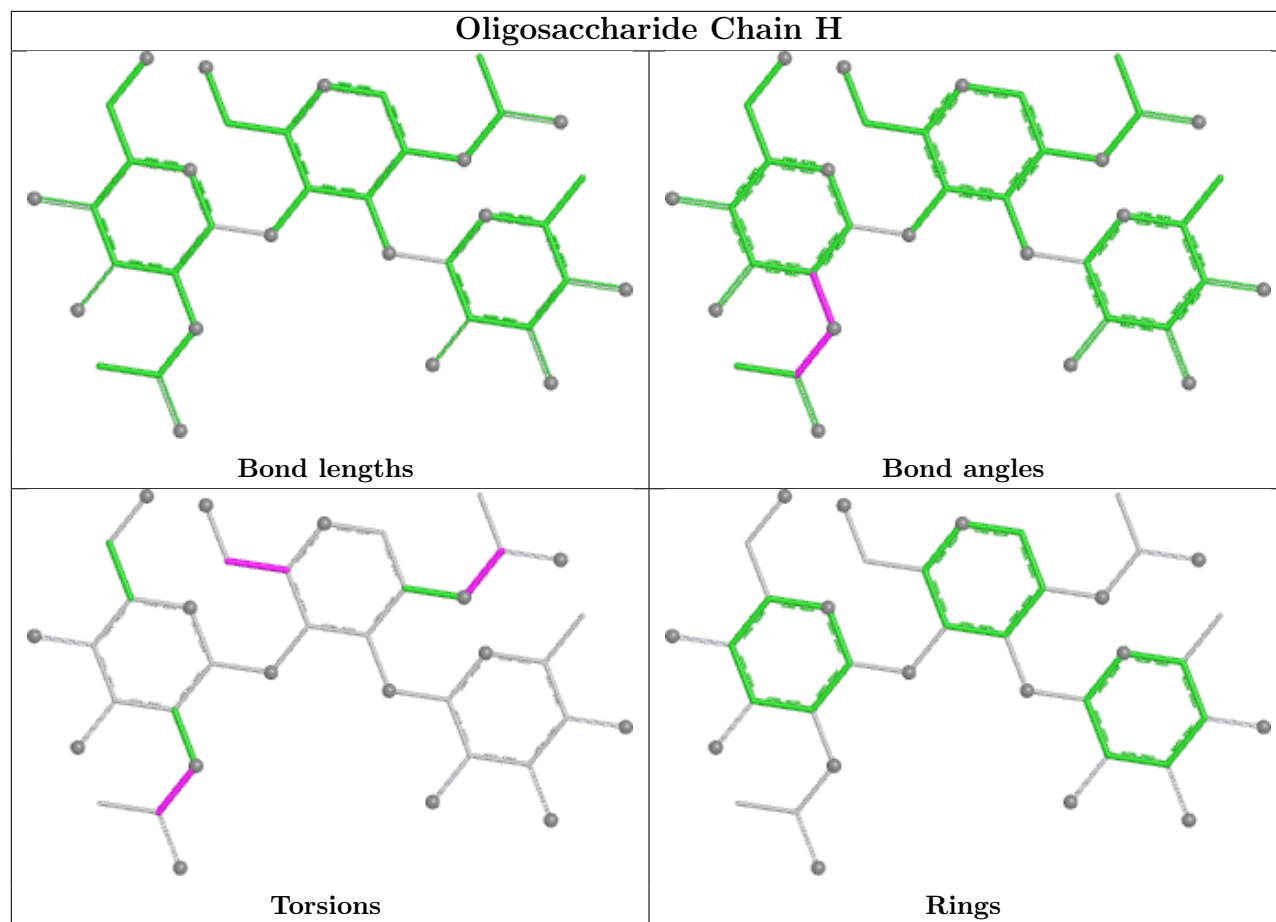


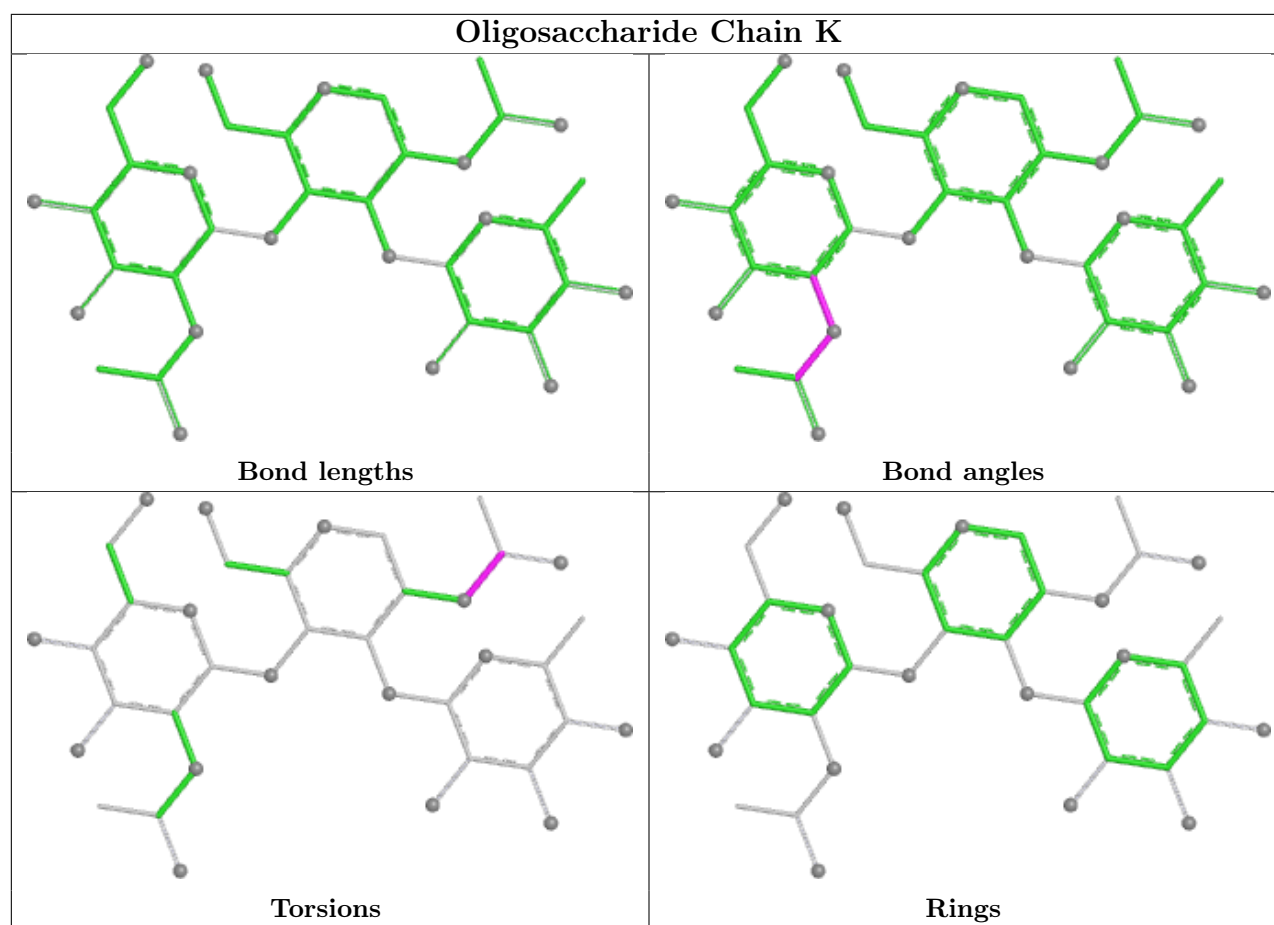


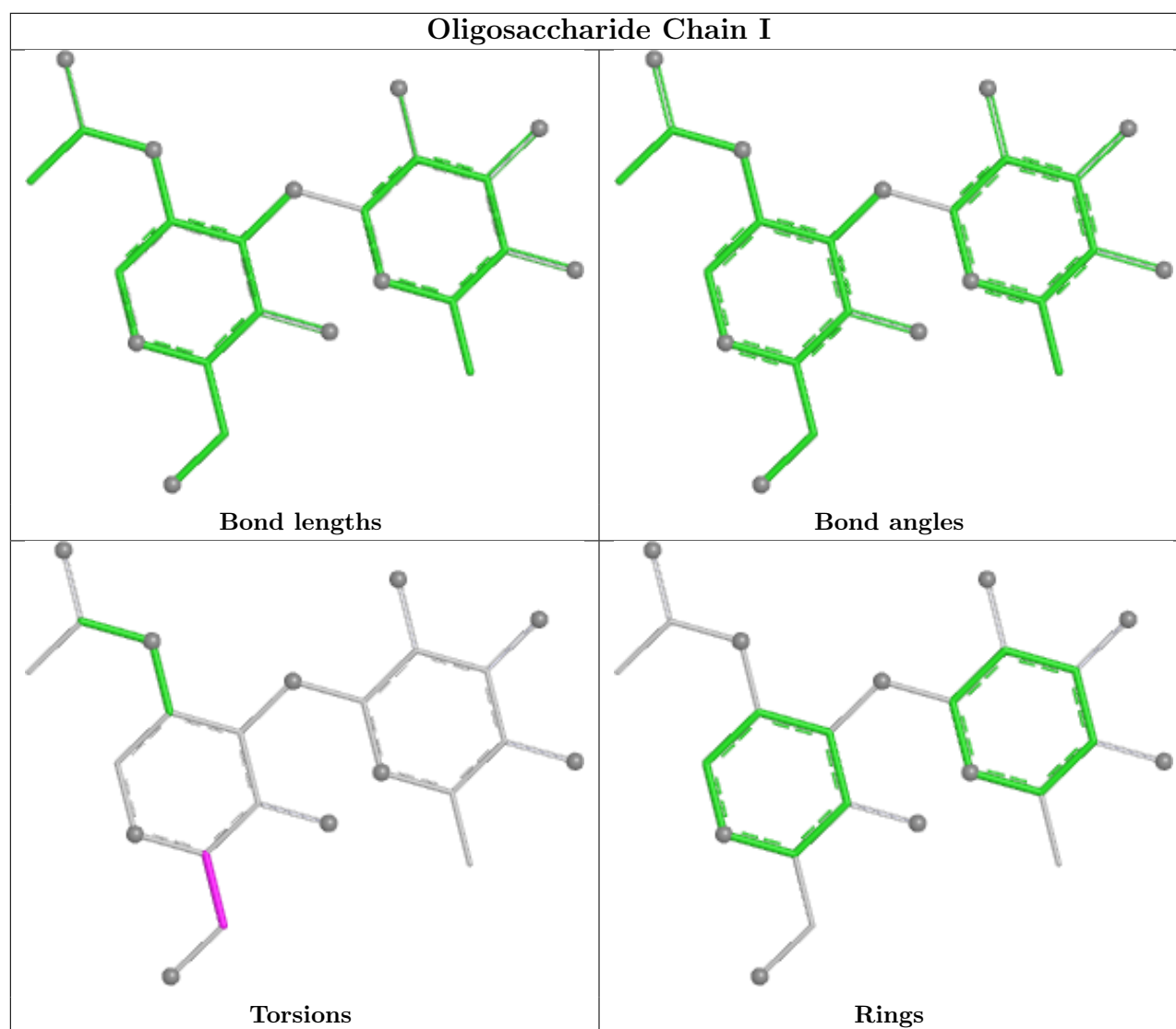












5.6 Ligand geometry [i](#)

Of 11 ligands modelled in this entry, 8 are monoatomic - leaving 3 for Mogul analysis.

In the following table, the Counts columns list the number of bonds (or angles) for which Mogul statistics could be retrieved, the number of bonds (or angles) that are observed in the model and the number of bonds (or angles) that are defined in the Chemical Component Dictionary. The Link column lists molecule types, if any, to which the group is linked. The Z score for a bond length (or angle) is the number of standard deviations the observed value is removed from the expected value. A bond length (or angle) with $|Z| > 2$ is considered an outlier worth inspection. RMSZ is the root-mean-square of all Z scores of the bond lengths (or angles).

Mol	Type	Chain	Res	Link	Bond lengths			Bond angles		
					Counts	RMSZ	$\# Z > 2$	Counts	RMSZ	$\# Z > 2$
5	NAG	C	601	1	14,14,15	0.60	0	17,19,21	0.66	0
5	NAG	A	601	1	14,14,15	0.56	0	17,19,21	0.80	1 (5%)

Mol	Type	Chain	Res	Link	Bond lengths			Bond angles		
					Counts	RMSZ	# Z > 2	Counts	RMSZ	# Z > 2
5	NAG	D	601	1	14,14,15	0.62	0	17,19,21	0.73	1 (5%)

In the following table, the Chirals column lists the number of chiral outliers, the number of chiral centers analysed, the number of these observed in the model and the number defined in the Chemical Component Dictionary. Similar counts are reported in the Torsion and Rings columns. '-' means no outliers of that kind were identified.

Mol	Type	Chain	Res	Link	Chirals	Torsions	Rings
5	NAG	C	601	1	-	4/6/23/26	0/1/1/1
5	NAG	A	601	1	-	2/6/23/26	0/1/1/1
5	NAG	D	601	1	-	3/6/23/26	0/1/1/1

There are no bond length outliers.

All (2) bond angle outliers are listed below:

Mol	Chain	Res	Type	Atoms	Z	Observed(°)	Ideal(°)
5	A	601	NAG	C2-N2-C7	-2.13	120.04	122.90
5	D	601	NAG	C2-N2-C7	-2.06	120.14	122.90

There are no chirality outliers.

All (9) torsion outliers are listed below:

Mol	Chain	Res	Type	Atoms
5	C	601	NAG	C8-C7-N2-C2
5	C	601	NAG	O7-C7-N2-C2
5	D	601	NAG	C8-C7-N2-C2
5	D	601	NAG	O7-C7-N2-C2
5	A	601	NAG	O5-C5-C6-O6
5	C	601	NAG	O5-C5-C6-O6
5	C	601	NAG	C4-C5-C6-O6
5	A	601	NAG	C4-C5-C6-O6
5	D	601	NAG	C4-C5-C6-O6

There are no ring outliers.

No monomer is involved in short contacts.

5.7 Other polymers

There are no such residues in this entry.

5.8 Polymer linkage issues ⓘ

There are no chain breaks in this entry.

6 Fit of model and data [i](#)

6.1 Protein, DNA and RNA chains [i](#)

In the following table, the column labelled ‘#RSRZ> 2’ contains the number (and percentage) of RSRZ outliers, followed by percent RSRZ outliers for the chain as percentile scores relative to all X-ray entries and entries of similar resolution. The OWAB column contains the minimum, median, 95th percentile and maximum values of the occupancy-weighted average B-factor per residue. The column labelled ‘Q< 0.9’ lists the number of (and percentage) of residues with an average occupancy less than 0.9.

Mol	Chain	Analysed	<RSRZ>	#RSRZ>2	OWAB(Å ²)	Q<0.9
1	A	237/241 (98%)	-0.12	2 (0%) 82 79	8, 21, 39, 46	0
1	B	237/241 (98%)	-0.05	2 (0%) 82 79	10, 23, 44, 51	0
1	C	237/241 (98%)	-0.07	3 (1%) 75 71	13, 24, 46, 60	0
1	D	237/241 (98%)	-0.01	2 (0%) 82 79	13, 25, 47, 59	0
All	All	948/964 (98%)	-0.06	9 (0%) 81 78	8, 24, 45, 60	0

All (9) RSRZ outliers are listed below:

Mol	Chain	Res	Type	RSRZ
1	D	237	GLY	3.2
1	A	28	ASN	3.0
1	A	237	GLY	2.8
1	B	133	GLN	2.6
1	C	77	ARG	2.3
1	B	237	GLY	2.2
1	C	13	ASN	2.1
1	C	237	GLY	2.1
1	D	26	SER	2.0

6.2 Non-standard residues in protein, DNA, RNA chains [i](#)

There are no non-standard protein/DNA/RNA residues in this entry.

6.3 Carbohydrates [i](#)

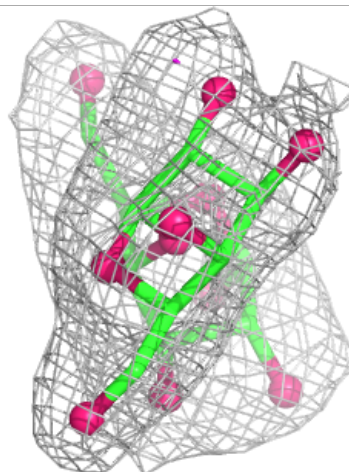
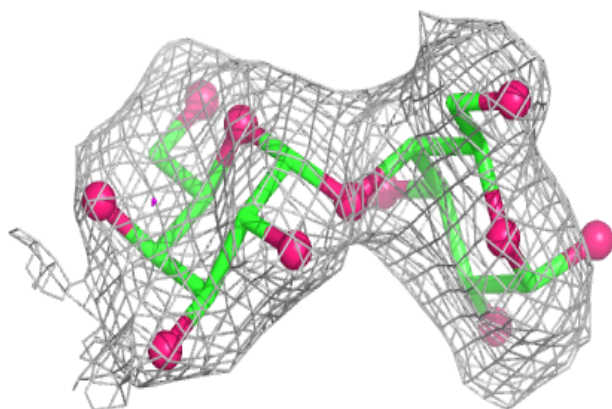
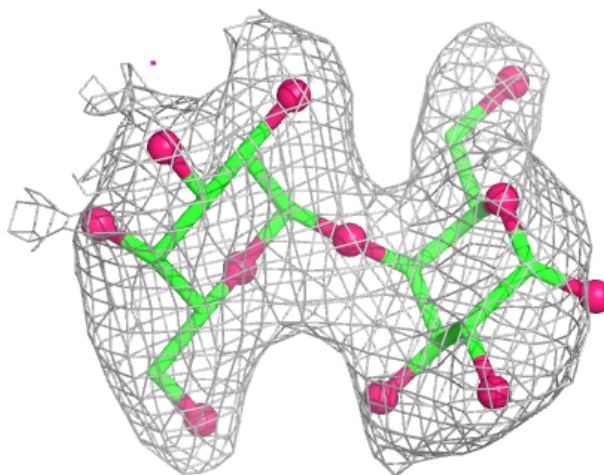
In the following table, the Atoms column lists the number of modelled atoms in the group and the number defined in the chemical component dictionary. The B-factors column lists the minimum, median, 95th percentile and maximum values of B factors of atoms in the group. The column labelled ‘Q< 0.9’ lists the number of atoms with occupancy less than 0.9.

Mol	Type	Chain	Res	Atoms	RSCC	RSR	B-factors(\AA^2)	Q<0.9
3	NAG	H	3	14/15	0.65	0.14	61,63,65,66	0
3	FUC	H	2	10/11	0.70	0.14	57,58,60,61	0
2	GLA	J	1	12/12	0.72	0.17	41,42,44,48	0
4	NAG	I	1	14/15	0.72	0.13	40,47,54,57	0
3	FUC	K	2	10/11	0.75	0.16	46,47,48,50	0
2	GLA	E	1	12/12	0.76	0.15	43,47,48,51	0
2	GLA	L	1	12/12	0.77	0.17	42,45,48,51	0
3	NAG	K	3	14/15	0.78	0.13	47,48,51,53	0
2	GLA	G	1	12/12	0.81	0.14	30,32,35,41	0
3	NAG	H	1	14/15	0.85	0.11	43,49,56,56	0
3	NAG	F	3	14/15	0.85	0.11	47,49,51,51	0
2	GLA	J	2	11/12	0.86	0.13	38,39,40,43	0
2	GLA	L	2	11/12	0.87	0.12	39,41,41,41	0
3	NAG	F	1	14/15	0.87	0.10	36,38,40,43	0
2	GLA	E	2	11/12	0.87	0.12	37,38,39,40	0
3	NAG	K	1	14/15	0.88	0.10	35,38,42,44	0
4	FUC	I	2	10/11	0.88	0.09	44,47,48,48	0
3	FUC	F	2	10/11	0.89	0.10	39,41,42,43	0
2	GLA	G	2	11/12	0.94	0.08	23,26,28,28	0

The following is a graphical depiction of the model fit to experimental electron density for oligosaccharide. Each fit is shown from different orientation to approximate a three-dimensional view.

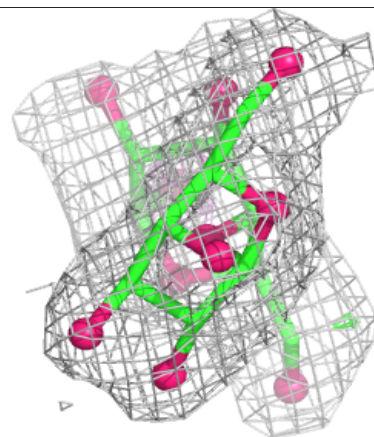
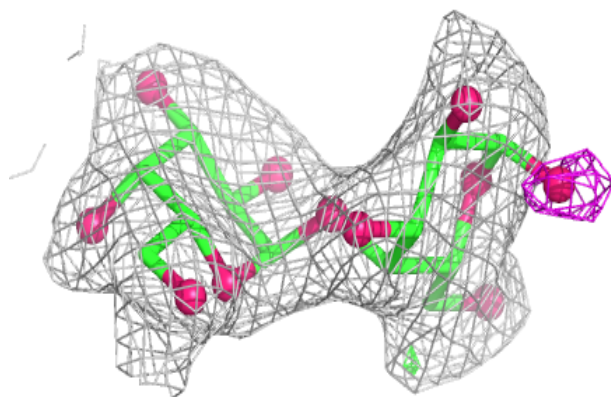
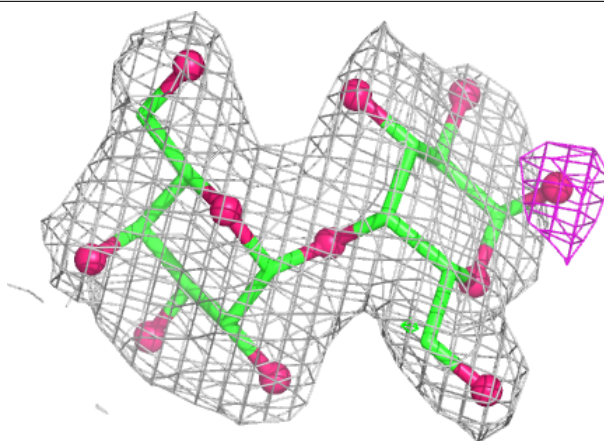
Electron density around Chain E:

$2mF_o-DF_c$ (at 0.7 rmsd) in gray
 mF_o-DF_c (at 3 rmsd) in purple (negative)
and green (positive)



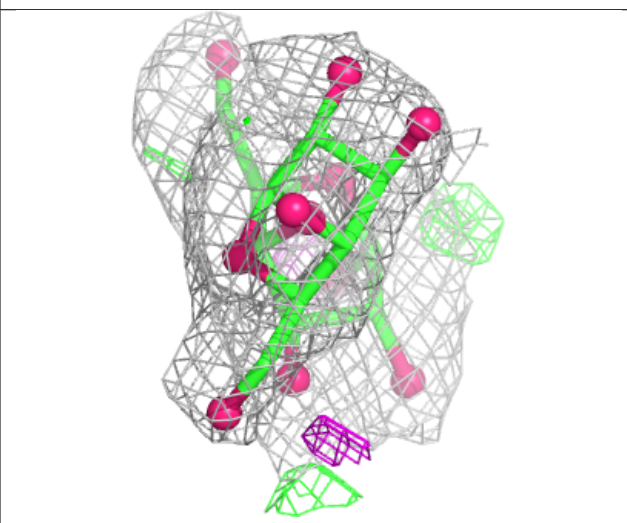
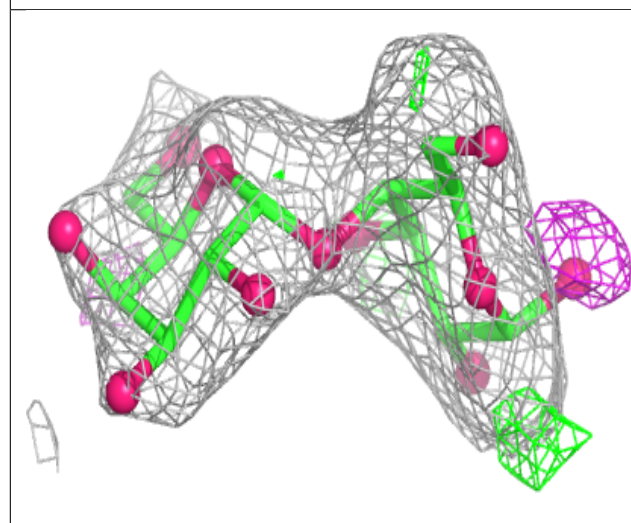
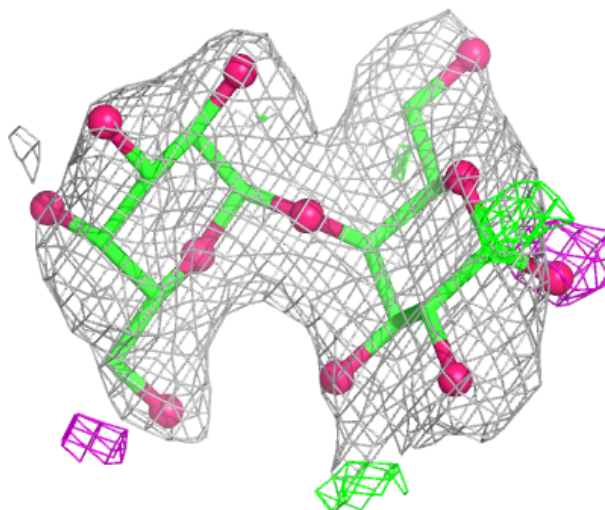
Electron density around Chain G:

$2mF_o-DF_c$ (at 0.7 rmsd) in gray
 mF_o-DF_c (at 3 rmsd) in purple (negative)
and green (positive)



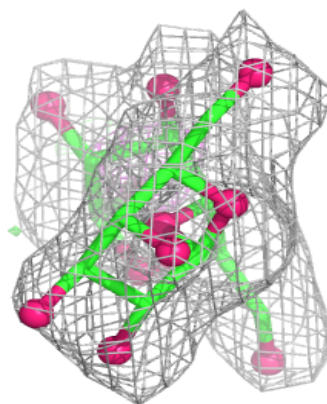
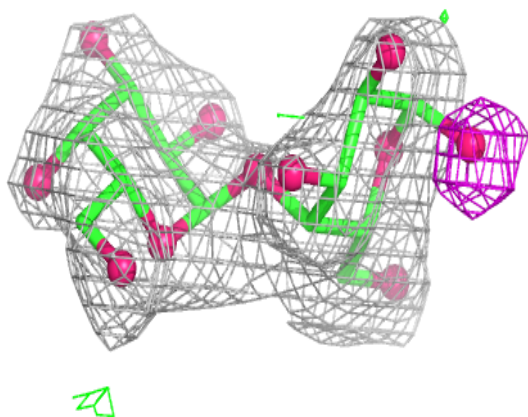
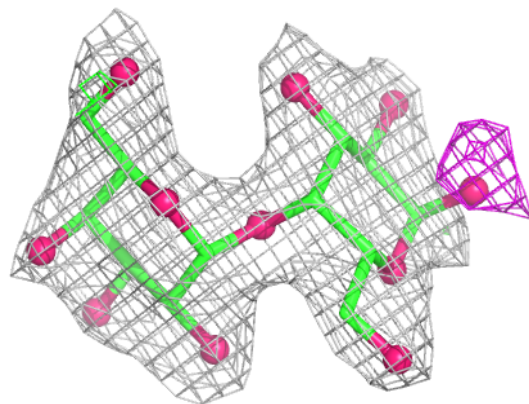
Electron density around Chain J:

$2mF_o-DF_c$ (at 0.7 rmsd) in gray
 mF_o-DF_c (at 3 rmsd) in purple (negative)
and green (positive)



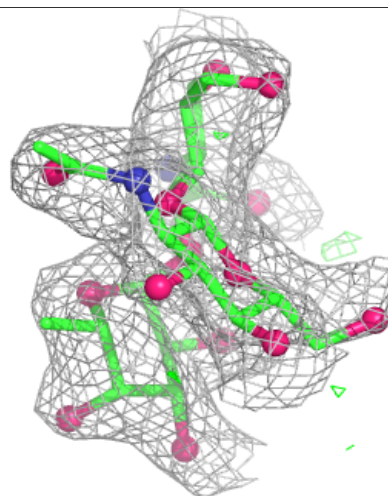
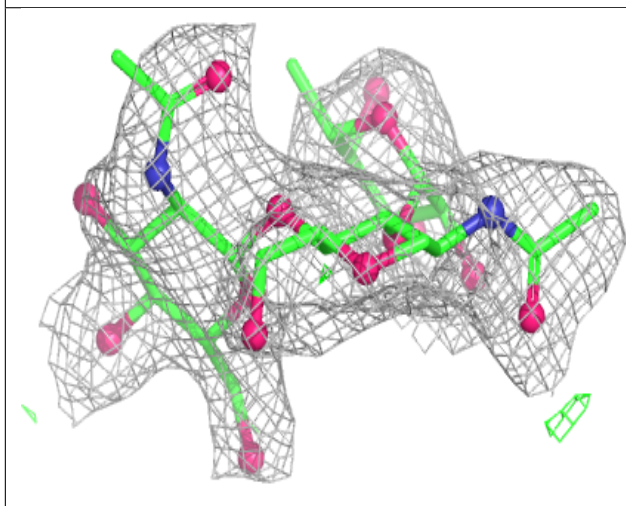
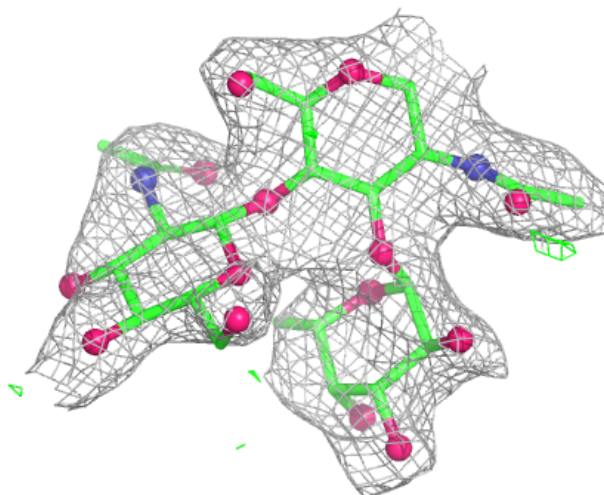
Electron density around Chain L:

$2mF_o - DF_c$ (at 0.7 rmsd) in gray
 $mF_o - DF_c$ (at 3 rmsd) in purple (negative)
and green (positive)



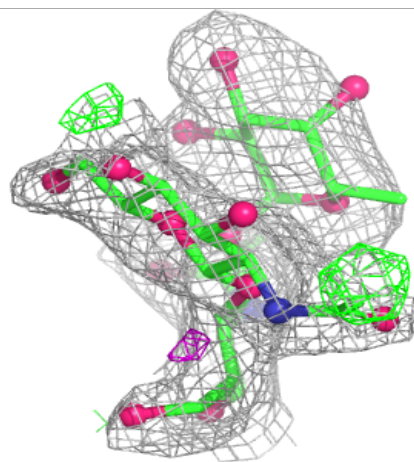
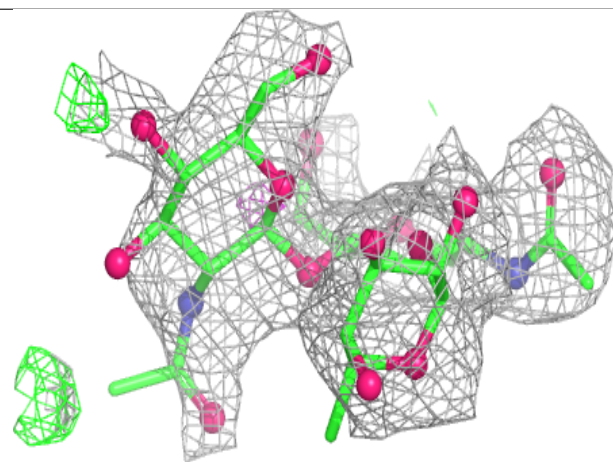
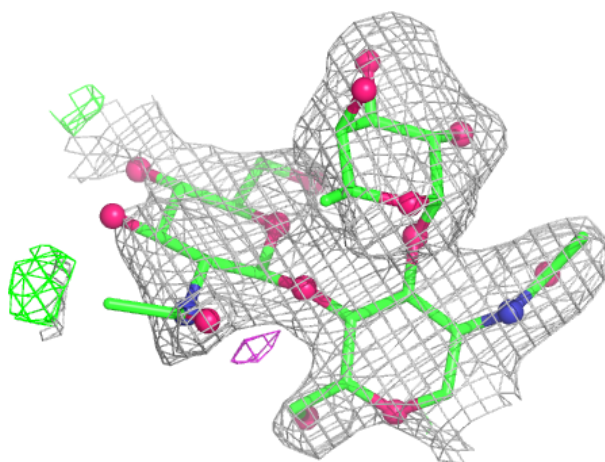
Electron density around Chain F:

$2mF_o-DF_c$ (at 0.7 rmsd) in gray
 mF_o-DF_c (at 3 rmsd) in purple (negative)
and green (positive)



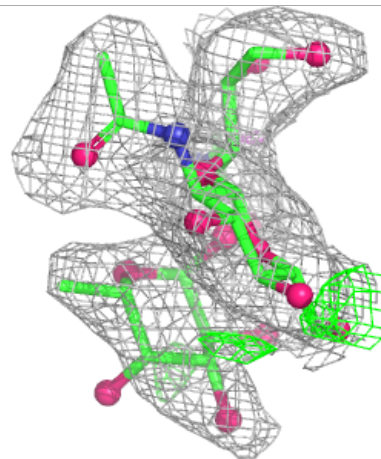
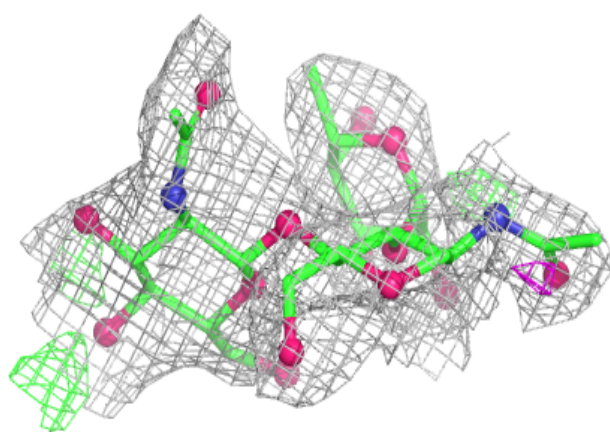
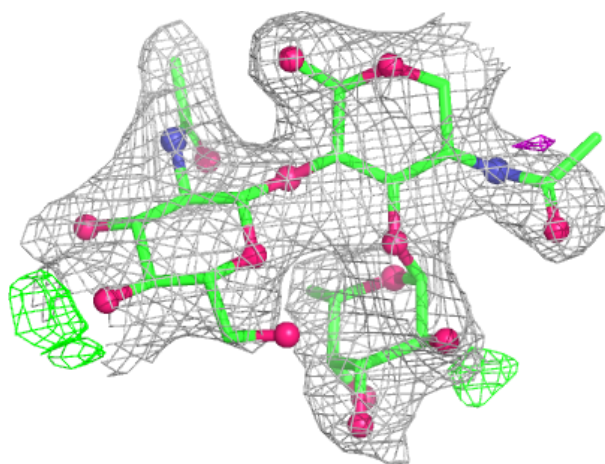
Electron density around Chain H:

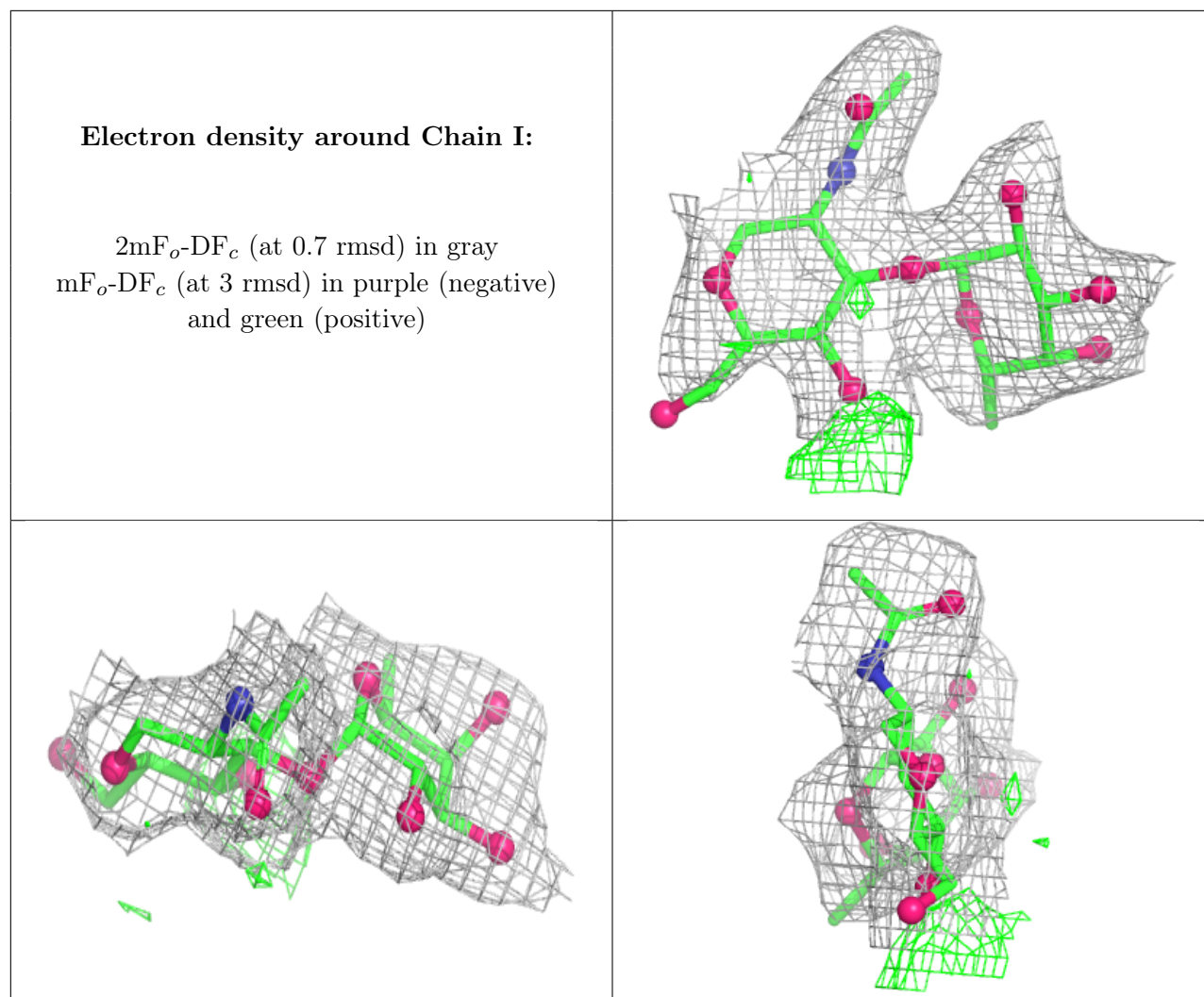
$2mF_o-DF_c$ (at 0.7 rmsd) in gray
 mF_o-DF_c (at 3 rmsd) in purple (negative)
and green (positive)



Electron density around Chain K:

$2mF_o-DF_c$ (at 0.7 rmsd) in gray
 mF_o-DF_c (at 3 rmsd) in purple (negative)
and green (positive)





6.4 Ligands ⓘ

In the following table, the Atoms column lists the number of modelled atoms in the group and the number defined in the chemical component dictionary. The B-factors column lists the minimum, median, 95th percentile and maximum values of B factors of atoms in the group. The column labelled 'Q< 0.9' lists the number of atoms with occupancy less than 0.9.

Mol	Type	Chain	Res	Atoms	RSCC	RSR	B-factors(Å ²)	Q<0.9
5	NAG	C	601	14/15	0.63	0.15	52,57,62,63	0
5	NAG	D	601	14/15	0.82	0.11	41,45,47,47	0
5	NAG	A	601	14/15	0.85	0.10	41,44,46,49	0
7	CA	C	303	1/1	0.92	0.05	25,25,25,25	0
7	CA	A	303	1/1	0.97	0.05	16,16,16,16	0
7	CA	B	303	1/1	0.97	0.05	16,16,16,16	0
6	MN	C	300	1/1	0.97	0.04	30,30,30,30	0
7	CA	D	303	1/1	0.97	0.06	19,19,19,19	0
6	MN	A	300	1/1	0.99	0.02	27,27,27,27	0

Continued on next page...

Continued from previous page...

Mol	Type	Chain	Res	Atoms	RSCC	RSR	B-factors(\AA^2)	Q<0.9
6	MN	D	300	1/1	0.99	0.03	26,26,26,26	0
6	MN	B	300	1/1	0.99	0.02	21,21,21,21	0

6.5 Other polymers [i](#)

There are no such residues in this entry.