



Full wwPDB X-ray Structure Validation Report ⓘ

Mar 15, 2026 – 02:27 AM UTC

PDB ID : 3BSA / pdb_00003bsa
Title : Crystal Structure of HCV NS5B Polymerase with a Novel Pyridazinone Inhibitor
Authors : Han, Q.; Showalter, R.E.; Zhao, Q.; Kissinger, C.R.
Deposited on : 2007-12-23
Resolution : 2.30 Å(reported)

This is a Full wwPDB X-ray Structure Validation Report for a publicly released PDB entry.

We welcome your comments at validation@mail.wwpdb.org

A user guide is available at

<https://www.wwpdb.org/validation/2017/XrayValidationReportHelp>

with specific help available everywhere you see the ⓘ symbol.

The types of validation reports are described at

<http://www.wwpdb.org/validation/2017/FAQs#types>.

The following versions of software and data (see [references ⓘ](#)) were used in the production of this report:

MolProbity	:	4-5-2 with Phenix2.0
Mogul	:	2022.3.0, CSD as543be (2022)
Xtriage (Phenix)	:	2.0
EDS	:	3.0
Buster-report	:	wwPDB partial adaption of 1.1.7 (2018)
Percentile statistics	:	20250101.v01 (using entries in the PDB archive January 1st 2025)
CCP4	:	9.0.010 (Gargrove)
Density-Fitness	:	1.0.12
Ideal geometry (proteins)	:	Engh & Huber (2001)
Ideal geometry (DNA, RNA)	:	Parkinson et al. (1996)
Validation Pipeline (wwPDB-VP)	:	2.49

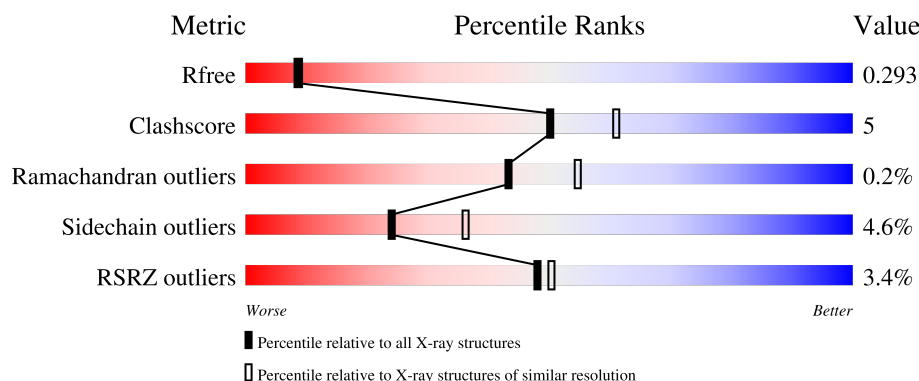
1 Overall quality at a glance

The following experimental techniques were used to determine the structure:

X-RAY DIFFRACTION

The reported resolution of this entry is 2.30 Å.

Percentile scores (ranging between 0-100) for global validation metrics of the entry are shown in the following graphic. The table shows the number of entries on which the scores are based.



Metric	Whole archive (#Entries)	Similar resolution (#Entries, resolution range(Å))
R_{free}	180053	6319 (2.30-2.30)
Clashscore	190562	6919 (2.30-2.30)
Ramachandran outliers	187476	6854 (2.30-2.30)
Sidechain outliers	187428	6854 (2.30-2.30)
RSRZ outliers	180081	6325 (2.30-2.30)

The table below summarises the geometric issues observed across the polymeric chains and their fit to the electron density. The red, orange, yellow and green segments of the lower bar indicate the fraction of residues that contain outliers for ≥ 3 , 2, 1 and 0 types of geometric quality criteria respectively. A grey segment represents the fraction of residues that are not modelled. The numeric value for each fraction is indicated below the corresponding segment, with a dot representing fractions $\leq 5\%$. The upper red bar (where present) indicates the fraction of residues that have poor fit to the electron density. The numeric value is given above the bar.

Mol	Chain	Length	Quality of chain
1	A	578	<div> <div>3%</div> <div>83%</div> <div>12%</div> <div>• •</div> </div>
1	B	578	<div> <div>4%</div> <div>83%</div> <div>12%</div> <div>• •</div> </div>

2 Entry composition

There are 3 unique types of molecules in this entry. The entry contains 8914 atoms, of which 0 are hydrogens and 0 are deuteriums.

In the tables below, the ZeroOcc column contains the number of atoms modelled with zero occupancy, the AltConf column contains the number of residues with at least one atom in alternate conformation and the Trace column contains the number of residues modelled with at most 2 atoms.

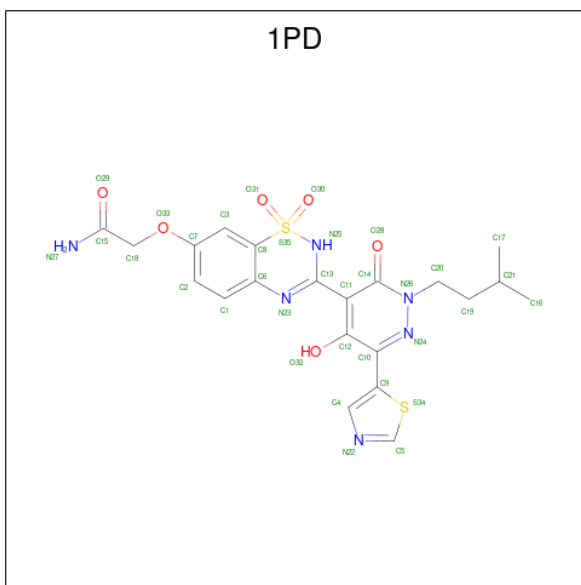
- Molecule 1 is a protein called RNA-directed RNA polymerase.

Mol	Chain	Residues	Atoms					ZeroOcc	AltConf	Trace
1	A	557	Total	C	N	O	S	0	0	0
			4334	2735	764	804	31			
1	B	557	Total	C	N	O	S	0	0	0
			4334	2735	764	804	31			

There are 18 discrepancies between the modelled and reference sequences:

Chain	Residue	Modelled	Actual	Comment	Reference
A	544	GLN	ARG	engineered mutation	UNP P26663
A	571	LEU	-	expression tag	UNP P26663
A	572	GLU	-	expression tag	UNP P26663
A	573	HIS	-	expression tag	UNP P26663
A	574	HIS	-	expression tag	UNP P26663
A	575	HIS	-	expression tag	UNP P26663
A	576	HIS	-	expression tag	UNP P26663
A	577	HIS	-	expression tag	UNP P26663
A	578	HIS	-	expression tag	UNP P26663
B	544	GLN	ARG	engineered mutation	UNP P26663
B	571	LEU	-	expression tag	UNP P26663
B	572	GLU	-	expression tag	UNP P26663
B	573	HIS	-	expression tag	UNP P26663
B	574	HIS	-	expression tag	UNP P26663
B	575	HIS	-	expression tag	UNP P26663
B	576	HIS	-	expression tag	UNP P26663
B	577	HIS	-	expression tag	UNP P26663
B	578	HIS	-	expression tag	UNP P26663

- Molecule 2 is 2-({3-[5-hydroxy-2-(3-methylbutyl)-3-oxo-6-(1,3-thiazol-5-yl)-2,3-dihydropyridazin-4-yl]-1,1-dioxido-2H-1,2,4-benzothia diazin-7-yl}oxy)acetamide (CCD ID: 1PD) (formula: C₂₁H₂₂N₆O₆S₂).



Mol	Chain	Residues	Atoms					ZeroOcc	AltConf
2	A	1	Total 35	C 21	N 6	O 6	S 2	0	0
2	B	1	Total 35	C 21	N 6	O 6	S 2	0	0

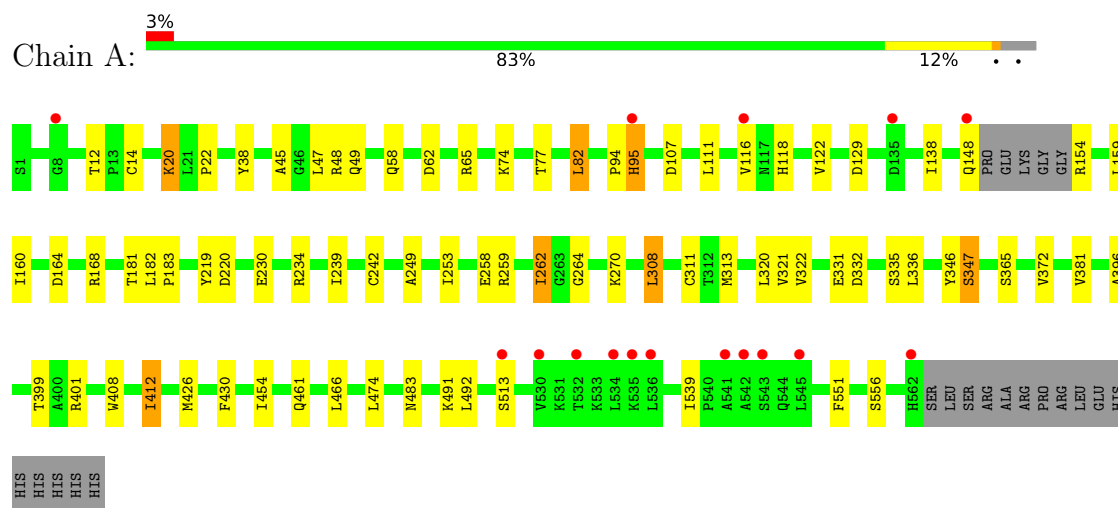
- Molecule 3 is water.

Mol	Chain	Residues	Atoms	ZeroOcc	AltConf
3	A	83	Total O 83 83	0	0
3	B	93	Total O 93 93	0	0

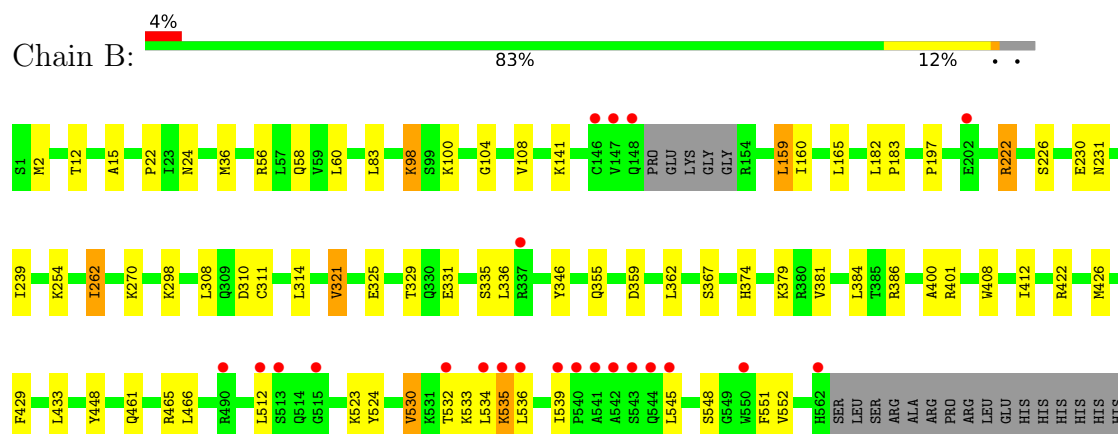
3 Residue-property plots [i](#)

These plots are drawn for all protein, RNA, DNA and oligosaccharide chains in the entry. The first graphic for a chain summarises the proportions of the various outlier classes displayed in the second graphic. The second graphic shows the sequence view annotated by issues in geometry and electron density. Residues are color-coded according to the number of geometric quality criteria for which they contain at least one outlier: green = 0, yellow = 1, orange = 2 and red = 3 or more. A red dot above a residue indicates a poor fit to the electron density ($RSRZ > 2$). Stretches of 2 or more consecutive residues without any outlier are shown as a green connector. Residues present in the sample, but not in the model, are shown in grey.

• Molecule 1: RNA-directed RNA polymerase



• Molecule 1: RNA-directed RNA polymerase



4 Data and refinement statistics

Property	Value	Source
Space group	P 21 21 21	Depositor
Cell constants a, b, c, α , β , γ	85.54Å 103.91Å 125.93Å 90.00° 90.00° 90.00°	Depositor
Resolution (Å)	41.88 – 2.30 41.88 – 2.30	Depositor EDS
% Data completeness (in resolution range)	95.7 (41.88-2.30) 95.7 (41.88-2.30)	Depositor EDS
R_{merge}	(Not available)	Depositor
R_{sym}	(Not available)	Depositor
$\langle I/\sigma(I) \rangle$ ¹	7.12 (at 2.29Å)	Xtriage
Refinement program	REFMAC 5.2.0019	Depositor
R, R_{free}	0.242 , 0.299 0.239 , 0.293	Depositor DCC
R_{free} test set	2394 reflections (4.74%)	wwPDB-VP
Wilson B-factor (Å ²)	29.7	Xtriage
Anisotropy	1.242	Xtriage
Bulk solvent k_{sol} (e/Å ³), B_{sol} (Å ²)	0.33 , 27.0	EDS
L-test for twinning ²	$\langle L \rangle = 0.46$, $\langle L^2 \rangle = 0.29$	Xtriage
Estimated twinning fraction	No twinning to report.	Xtriage
F_o, F_c correlation	0.93	EDS
Total number of atoms	8914	wwPDB-VP
Average B, all atoms (Å ²)	38.0	wwPDB-VP

Xtriage's analysis on translational NCS is as follows: *The analyses of the Patterson function reveals a significant off-origin peak that is 40.45 % of the origin peak, indicating pseudo-translational symmetry. The chance of finding a peak of this or larger height randomly in a structure without pseudo-translational symmetry is equal to 2.7323e-04. The detected translational NCS is most likely also responsible for the elevated intensity ratio.*

¹Intensities estimated from amplitudes.

²Theoretical values of $\langle |L| \rangle$, $\langle L^2 \rangle$ for acentric reflections are 0.5, 0.333 respectively for untwinned datasets, and 0.375, 0.2 for perfectly twinned datasets.

5 Model quality [i](#)

5.1 Standard geometry [i](#)

Bond lengths and bond angles in the following residue types are not validated in this section: 1PD

The Z score for a bond length (or angle) is the number of standard deviations the observed value is removed from the expected value. A bond length (or angle) with $|Z| > 5$ is considered an outlier worth inspection. RMSZ is the root-mean-square of all Z scores of the bond lengths (or angles).

Mol	Chain	Bond lengths		Bond angles	
		RMSZ	$\# Z > 5$	RMSZ	$\# Z > 5$
1	A	0.58	0/4428	0.85	2/6009 (0.0%)
1	B	0.56	0/4428	0.86	1/6009 (0.0%)
All	All	0.57	0/8856	0.86	3/12018 (0.0%)

There are no bond length outliers.

All (3) bond angle outliers are listed below:

Mol	Chain	Res	Type	Atoms	Z	Observed(°)	Ideal(°)
1	A	539	ILE	CA-C-N	6.33	125.82	119.24
1	A	539	ILE	C-N-CA	6.33	125.82	119.24
1	B	552	VAL	N-CA-C	-5.92	106.95	111.62

There are no chirality outliers.

There are no planarity outliers.

5.2 Too-close contacts [i](#)

In the following table, the Non-H and H(model) columns list the number of non-hydrogen atoms and hydrogen atoms in the chain respectively. The H(added) column lists the number of hydrogen atoms added and optimized by MolProbity. The Clashes column lists the number of clashes within the asymmetric unit, whereas Symm-Clashes lists symmetry-related clashes.

Mol	Chain	Non-H	H(model)	H(added)	Clashes	Symm-Clashes
1	A	4334	0	4354	51	0
1	B	4334	0	4354	40	0
2	A	35	0	22	3	0
2	B	35	0	22	0	0
3	A	83	0	0	3	0
3	B	93	0	0	0	0

Continued on next page...

Continued from previous page...

Mol	Chain	Non-H	H(model)	H(added)	Clashes	Symm-Clashes
All	All	8914	0	8752	92	0

The all-atom clashscore is defined as the number of clashes found per 1000 atoms (including hydrogen atoms). The all-atom clashscore for this structure is 5.

All (92) close contacts within the same asymmetric unit are listed below, sorted by their clash magnitude.

Atom-1	Atom-2	Interatomic distance (Å)	Clash overlap (Å)
1:B:466:LEU:HD11	1:B:551:PHE:CE2	2.02	0.94
1:B:466:LEU:HD11	1:B:551:PHE:HE2	1.34	0.92
1:A:321:VAL:CG2	1:A:365:SER:CB	2.59	0.81
1:A:12:THR:HG21	1:A:270:LYS:HE2	1.64	0.77
1:A:321:VAL:HG21	1:A:365:SER:CB	2.14	0.77
1:A:321:VAL:CG2	1:A:365:SER:HB3	2.15	0.76
1:A:230:GLU:HG3	1:A:262:ILE:HD13	1.71	0.72
1:B:230:GLU:HG3	1:B:262:ILE:HD13	1.71	0.72
1:B:429:PHE:O	1:B:433:LEU:HG	1.90	0.71
1:A:321:VAL:CG2	1:A:365:SER:HB2	2.22	0.69
1:A:95:HIS:H	1:A:95:HIS:CD2	2.11	0.68
1:B:535:LYS:HE2	1:B:535:LYS:HA	1.78	0.65
1:B:108:VAL:HG21	1:B:165:LEU:HD11	1.80	0.64
1:A:346:TYR:O	1:A:347:SER:HB3	1.99	0.62
1:A:321:VAL:HG21	1:A:365:SER:HB3	1.78	0.61
1:A:381:VAL:HG21	1:A:474:LEU:HD21	1.83	0.61
1:A:321:VAL:HG22	1:A:365:SER:HB3	1.82	0.60
1:A:264:GLY:HA3	3:A:642:HOH:O	2.01	0.60
1:A:219:TYR:HB3	1:A:320:LEU:HD23	1.84	0.59
1:B:530:VAL:O	1:B:533:LYS:HE3	2.03	0.59
1:B:535:LYS:HA	1:B:535:LYS:CE	2.33	0.58
1:A:331:GLU:OE2	1:A:331:GLU:HA	2.02	0.58
1:A:95:HIS:CD2	1:A:95:HIS:N	2.71	0.57
2:A:579:1PD:H17B	2:A:579:1PD:O28	2.04	0.57
1:B:314:LEU:HB3	1:B:321:VAL:HG13	1.88	0.56
1:A:308:LEU:HD11	1:A:335:SER:HB3	1.89	0.55
1:A:118:HIS:O	1:A:122:VAL:HG23	2.07	0.55
1:A:77:THR:O	1:B:24:ASN:HB2	2.06	0.55
1:A:22:PRO:HG2	1:A:401:ARG:HG2	1.88	0.54
1:B:182:LEU:HD11	1:B:239:ILE:HG22	1.90	0.54
1:A:48:ARG:HG2	1:A:159:LEU:HD13	1.90	0.52
1:A:58:GLN:HG3	1:A:347:SER:HB2	1.91	0.52
1:B:12:THR:HG21	1:B:270:LYS:HE2	1.93	0.51

Continued on next page...

Continued from previous page...

Atom-1	Atom-2	Interatomic distance (Å)	Clash overlap (Å)
1:B:298:LYS:HG2	1:B:346:TYR:HB3	1.93	0.50
1:B:98:LYS:HB2	1:B:104:GLY:HA2	1.93	0.50
1:B:524:TYR:CE1	1:B:536:LEU:HB3	2.46	0.50
1:A:82:LEU:HD13	1:A:249:ALA:HB2	1.94	0.50
1:A:22:PRO:HG2	1:A:401:ARG:CG	2.42	0.50
1:A:381:VAL:HG21	1:A:474:LEU:CD2	2.41	0.49
1:B:523:LYS:HG3	1:B:534:LEU:HD13	1.95	0.49
1:B:461:GLN:HG3	1:B:539:ILE:HG21	1.94	0.49
1:B:197:PRO:HD2	1:B:466:LEU:HD12	1.94	0.48
1:B:58:GLN:HG2	1:B:60:LEU:HD21	1.96	0.48
1:A:230:GLU:CG	1:A:262:ILE:HD13	2.41	0.48
1:A:346:TYR:O	1:A:347:SER:CB	2.62	0.48
1:A:38:TYR:HB3	1:A:154:ARG:HH21	1.80	0.47
1:A:234:ARG:HG3	1:A:262:ILE:HD11	1.96	0.47
1:A:313:MET:HG2	1:A:322:VAL:HG22	1.96	0.47
1:A:20:LYS:HD2	3:A:660:HOH:O	2.14	0.46
1:B:465:ARG:HG3	1:B:545:LEU:HD12	1.97	0.46
1:B:422:ARG:O	1:B:426:MET:HB2	2.15	0.45
1:A:249:ALA:O	1:A:253:ILE:HG13	2.15	0.45
1:A:466:LEU:HD21	1:A:551:PHE:HE2	1.80	0.45
1:B:310:ASP:HB3	1:B:325:GLU:HG2	1.99	0.45
1:B:374:HIS:HA	1:B:379:LYS:O	2.17	0.45
1:A:426:MET:O	1:A:430:PHE:HB2	2.17	0.45
1:B:182:LEU:N	1:B:183:PRO:CD	2.80	0.45
1:A:45:ALA:O	1:A:49:GLN:HG3	2.17	0.44
1:B:2:MET:HE3	1:B:2:MET:HB3	1.81	0.44
1:B:141:LYS:HE2	1:B:141:LYS:HB3	1.60	0.44
1:A:20:LYS:HD2	1:A:20:LYS:HA	1.74	0.44
1:A:239:ILE:O	1:A:242:CYS:HB2	2.19	0.43
2:A:579:1PD:H3	2:A:579:1PD:H18A	1.82	0.43
1:B:22:PRO:HG3	1:B:401:ARG:HG3	2.01	0.43
1:A:408:TRP:HE3	1:A:412:ILE:HD12	1.83	0.43
1:A:182:LEU:N	1:A:183:PRO:CD	2.82	0.43
1:A:396:ALA:O	1:A:399:THR:HB	2.19	0.43
1:B:56:ARG:HD2	1:B:226:SER:O	2.18	0.43
1:B:523:LYS:HE3	1:B:534:LEU:HD22	2.01	0.43
1:B:24:ASN:ND2	1:B:400:ALA:HA	2.33	0.42
1:B:159:LEU:HD12	1:B:159:LEU:HA	1.91	0.42
1:B:308:LEU:HD21	1:B:335:SER:HB3	2.01	0.42
1:B:448:TYR:CE2	1:B:551:PHE:HD1	2.36	0.42
1:A:234:ARG:HH12	1:A:258:GLU:CD	2.27	0.42

Continued on next page...

Continued from previous page...

Atom-1	Atom-2	Interatomic distance (Å)	Clash overlap (Å)
1:B:308:LEU:CD2	1:B:335:SER:HB3	2.50	0.42
1:A:129:ASP:O	1:A:259:ARG:HD2	2.20	0.42
1:A:466:LEU:CD2	1:A:551:PHE:HE2	2.33	0.42
1:A:138:ILE:HD11	1:A:159:LEU:HD23	2.02	0.41
1:A:483:ASN:HB3	3:A:643:HOH:O	2.20	0.41
1:A:164:ASP:O	1:A:168:ARG:HG3	2.20	0.41
1:A:94:PRO:HD2	1:A:95:HIS:CD2	2.55	0.41
1:B:222:ARG:HE	1:B:222:ARG:HB3	1.69	0.41
1:B:367:SER:O	1:B:386:ARG:HB2	2.21	0.41
1:B:408:TRP:O	1:B:412:ILE:HG13	2.21	0.41
1:A:62:ASP:OD1	1:A:65:ARG:NH2	2.49	0.41
1:A:556:SER:HB3	2:A:579:1PD:O30	2.20	0.41
1:B:308:LEU:HB2	1:B:311:CYS:SG	2.61	0.41
1:A:38:TYR:HB3	1:A:154:ARG:NH2	2.36	0.40
1:B:466:LEU:CD1	1:B:551:PHE:CE2	2.90	0.40
1:A:308:LEU:HB3	1:A:311:CYS:SG	2.61	0.40
1:A:332:ASP:O	1:A:336:LEU:HG	2.21	0.40
1:B:359:ASP:HB3	1:B:362:LEU:HG	2.03	0.40

There are no symmetry-related clashes.

5.3 Torsion angles [i](#)

5.3.1 Protein backbone [i](#)

In the following table, the Percentiles column shows the percent Ramachandran outliers of the chain as a percentile score with respect to all X-ray entries followed by that with respect to entries of similar resolution.

The Analysed column shows the number of residues for which the backbone conformation was analysed, and the total number of residues.

Mol	Chain	Analysed	Favoured	Allowed	Outliers	Percentiles	
1	A	553/578 (96%)	537 (97%)	15 (3%)	1 (0%)	43	55
1	B	553/578 (96%)	538 (97%)	14 (2%)	1 (0%)	43	55
All	All	1106/1156 (96%)	1075 (97%)	29 (3%)	2 (0%)	43	55

All (2) Ramachandran outliers are listed below:

Mol	Chain	Res	Type
1	B	15	ALA
1	A	347	SER

5.3.2 Protein sidechains ⓘ

In the following table, the Percentiles column shows the percent sidechain outliers of the chain as a percentile score with respect to all X-ray entries followed by that with respect to entries of similar resolution.

The Analysed column shows the number of residues for which the sidechain conformation was analysed, and the total number of residues.

Mol	Chain	Analysed	Rotameric	Outliers	Percentiles	
1	A	475/493 (96%)	453 (95%)	22 (5%)	24	36
1	B	475/493 (96%)	453 (95%)	22 (5%)	24	36
All	All	950/986 (96%)	906 (95%)	44 (5%)	24	36

All (44) residues with a non-rotameric sidechain are listed below:

Mol	Chain	Res	Type
1	A	14	CYS
1	A	20	LYS
1	A	47	LEU
1	A	74	LYS
1	A	82	LEU
1	A	95	HIS
1	A	107	ASP
1	A	111	LEU
1	A	116	VAL
1	A	148	GLN
1	A	160	ILE
1	A	181	THR
1	A	220	ASP
1	A	262	ILE
1	A	308	LEU
1	A	372	VAL
1	A	412	ILE
1	A	454	ILE
1	A	461	GLN
1	A	491	LYS
1	A	492	LEU
1	A	513	SER

Continued on next page...

Continued from previous page...

Mol	Chain	Res	Type
1	B	36	MET
1	B	83	LEU
1	B	98	LYS
1	B	100	LYS
1	B	159	LEU
1	B	160	ILE
1	B	222	ARG
1	B	231	ASN
1	B	254	LYS
1	B	262	ILE
1	B	321	VAL
1	B	329	THR
1	B	331	GLU
1	B	336	LEU
1	B	355	GLN
1	B	381	VAL
1	B	384	LEU
1	B	512	LEU
1	B	530	VAL
1	B	532	THR
1	B	535	LYS
1	B	548	SER

Sometimes sidechains can be flipped to improve hydrogen bonding and reduce clashes. All (14) such sidechains are listed below:

Mol	Chain	Res	Type
1	A	95	HIS
1	A	117	ASN
1	A	120	HIS
1	A	213	ASN
1	A	272	GLN
1	A	355	GLN
1	A	461	GLN
1	B	117	ASN
1	B	231	ASN
1	B	355	GLN
1	B	436	GLN
1	B	438	GLN
1	B	446	GLN
1	B	544	GLN

5.3.3 RNA ⓘ

There are no RNA molecules in this entry.

5.4 Non-standard residues in protein, DNA, RNA chains ⓘ

There are no non-standard protein/DNA/RNA residues in this entry.

5.5 Carbohydrates ⓘ

There are no oligosaccharides in this entry.

5.6 Ligand geometry ⓘ

2 ligands are modelled in this entry.

In the following table, the Counts columns list the number of bonds (or angles) for which Mogul statistics could be retrieved, the number of bonds (or angles) that are observed in the model and the number of bonds (or angles) that are defined in the Chemical Component Dictionary. The Link column lists molecule types, if any, to which the group is linked. The Z score for a bond length (or angle) is the number of standard deviations the observed value is removed from the expected value. A bond length (or angle) with $|Z| > 2$ is considered an outlier worth inspection. RMSZ is the root-mean-square of all Z scores of the bond lengths (or angles).

Mol	Type	Chain	Res	Link	Bond lengths			Bond angles		
					Counts	RMSZ	# Z > 2	Counts	RMSZ	# Z > 2
2	1PD	B	579	-	38,38,38	1.44	4 (10%)	43,56,56	1.59	7 (16%)
2	1PD	A	579	-	38,38,38	1.63	4 (10%)	43,56,56	1.81	11 (25%)

In the following table, the Chirals column lists the number of chiral outliers, the number of chiral centers analysed, the number of these observed in the model and the number defined in the Chemical Component Dictionary. Similar counts are reported in the Torsion and Rings columns. '-' means no outliers of that kind were identified.

Mol	Type	Chain	Res	Link	Chirals	Torsions	Rings
2	1PD	B	579	-	-	4/14/33/33	0/4/4/4
2	1PD	A	579	-	-	1/14/33/33	0/4/4/4

All (8) bond length outliers are listed below:

Mol	Chain	Res	Type	Atoms	Z	Observed(Å)	Ideal(Å)
2	A	579	1PD	S35-N25	7.85	1.70	1.62

Continued on next page...

Continued from previous page...

Mol	Chain	Res	Type	Atoms	Z	Observed(Å)	Ideal(Å)
2	B	579	1PD	S35-N25	6.69	1.69	1.62
2	A	579	1PD	C11-C14	2.44	1.50	1.44
2	A	579	1PD	C12-C10	2.32	1.49	1.45
2	A	579	1PD	C13-N25	2.15	1.43	1.37
2	B	579	1PD	C11-C14	2.12	1.49	1.44
2	B	579	1PD	C11-C12	-2.07	1.35	1.40
2	B	579	1PD	C12-C10	2.00	1.49	1.45

All (18) bond angle outliers are listed below:

Mol	Chain	Res	Type	Atoms	Z	Observed(°)	Ideal(°)
2	A	579	1PD	O31-S35-C8	-5.67	102.22	109.30
2	B	579	1PD	C11-C12-C10	-5.46	114.86	123.03
2	B	579	1PD	C12-C11-C13	4.49	124.03	118.55
2	A	579	1PD	C11-C12-C10	-4.26	116.66	123.03
2	A	579	1PD	C12-C11-C13	4.10	123.55	118.55
2	A	579	1PD	O31-S35-N25	3.49	111.11	108.26
2	B	579	1PD	C14-N26-N24	-3.26	122.88	126.24
2	A	579	1PD	O30-S35-O31	3.07	121.56	118.44
2	B	579	1PD	O30-S35-O31	2.63	121.11	118.44
2	A	579	1PD	C14-N26-N24	-2.42	123.75	126.24
2	A	579	1PD	O29-C15-C18	2.37	123.84	119.11
2	B	579	1PD	C14-C11-C13	-2.30	116.82	120.77
2	B	579	1PD	O29-C15-C18	2.22	123.55	119.11
2	B	579	1PD	C1-C6-N23	-2.19	115.82	118.61
2	A	579	1PD	O30-S35-C8	2.16	112.00	109.30
2	A	579	1PD	C6-N23-C13	2.16	121.26	117.58
2	A	579	1PD	C18-C15-N27	-2.11	111.74	117.60
2	A	579	1PD	O30-S35-N25	-2.10	106.55	108.26

There are no chirality outliers.

All (5) torsion outliers are listed below:

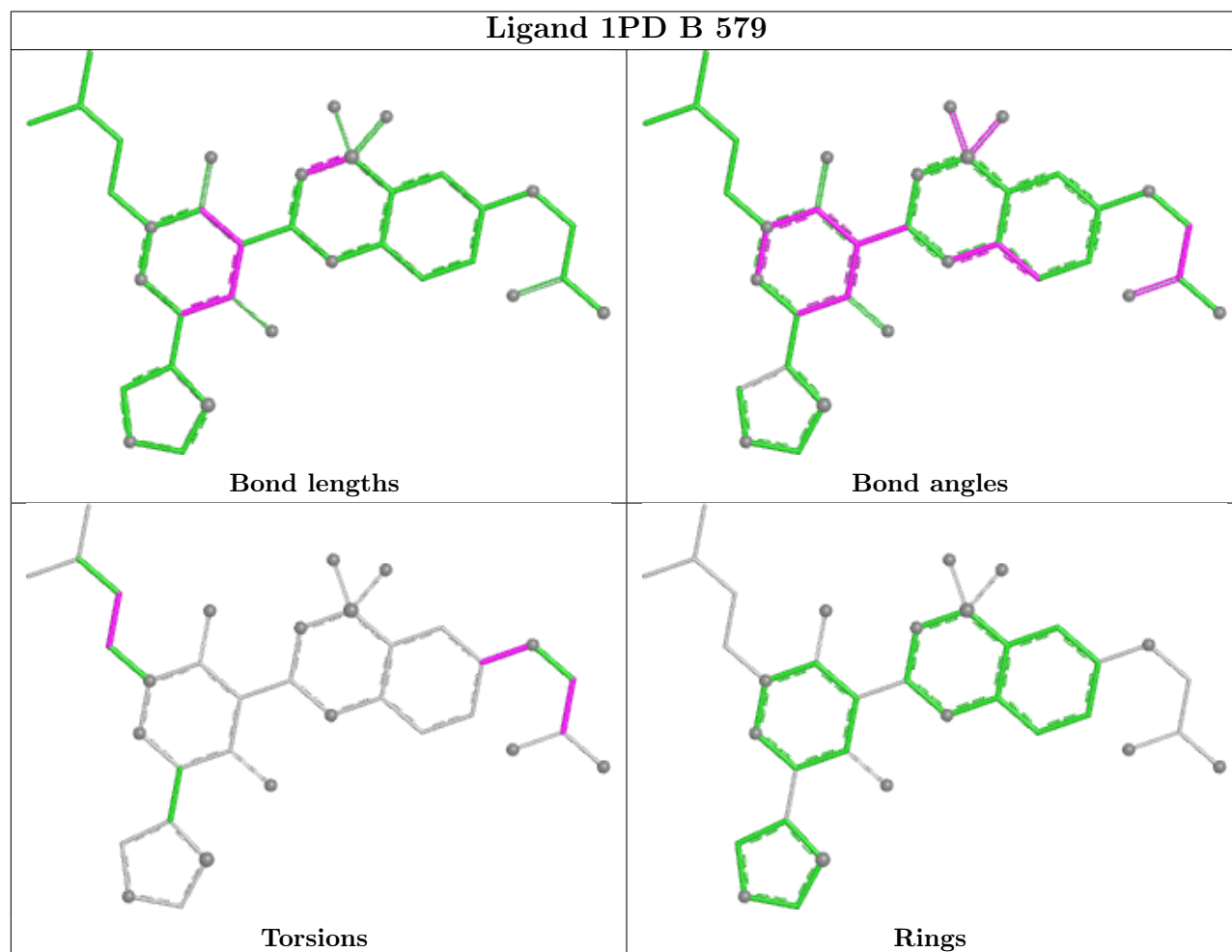
Mol	Chain	Res	Type	Atoms
2	A	579	1PD	N27-C15-C18-O33
2	B	579	1PD	C2-C7-O33-C18
2	B	579	1PD	C3-C7-O33-C18
2	B	579	1PD	C21-C19-C20-N26
2	B	579	1PD	O29-C15-C18-O33

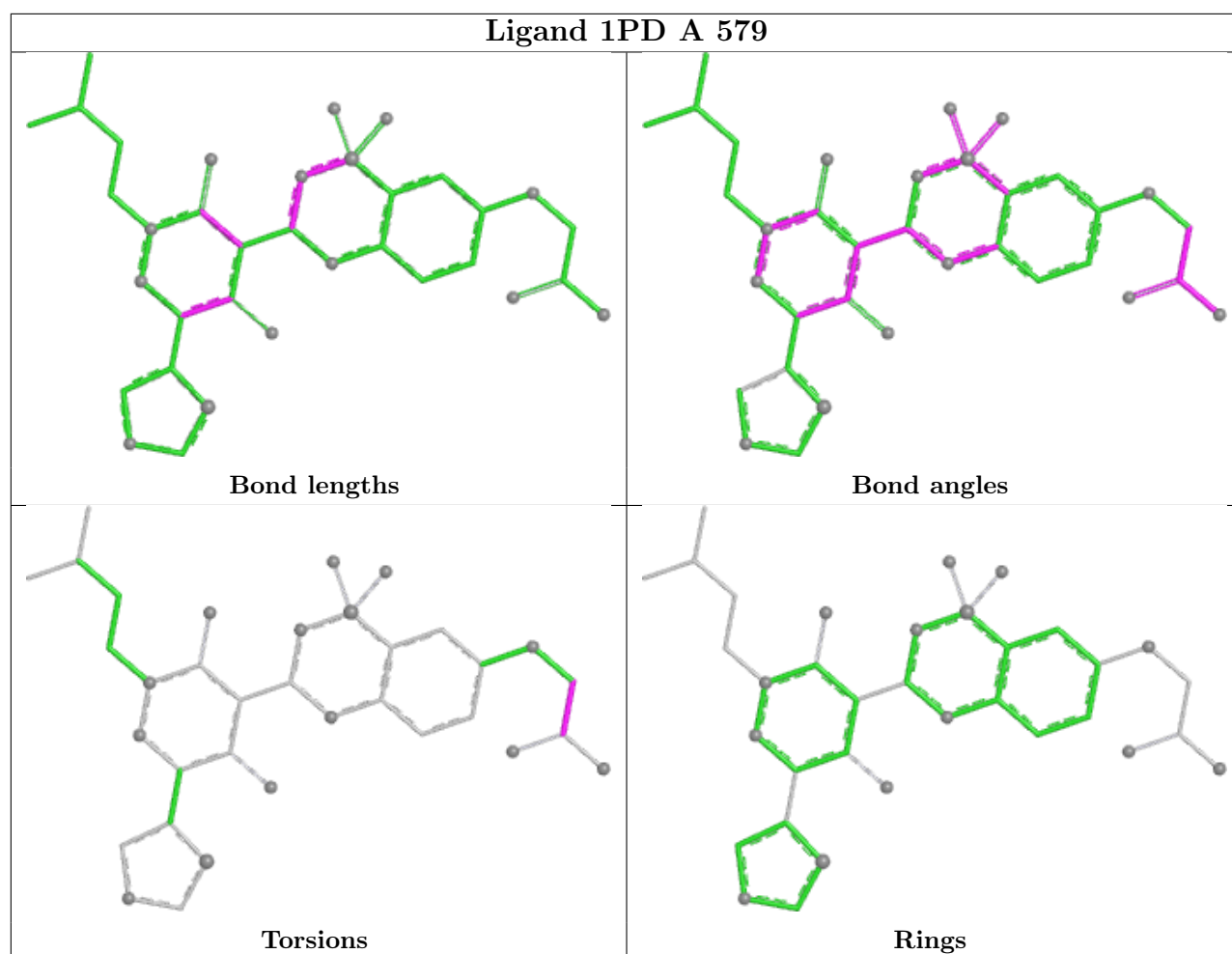
There are no ring outliers.

1 monomer is involved in 3 short contacts:

Mol	Chain	Res	Type	Clashes	Symm-Clashes
2	A	579	1PD	3	0

The following is a two-dimensional graphical depiction of Mogul quality analysis of bond lengths, bond angles, torsion angles, and ring geometry for all instances of the Ligand of Interest. In addition, ligands with molecular weight > 250 and outliers as shown on the validation Tables will also be included. For torsion angles, if less than 5% of the Mogul distribution of torsion angles is within 10 degrees of the torsion angle in question, then that torsion angle is considered an outlier. Any bond that is central to one or more torsion angles identified as an outlier by Mogul will be highlighted in the graph. For rings, the root-mean-square deviation (RMSD) between the ring in question and similar rings identified by Mogul is calculated over all ring torsion angles. If the average RMSD is greater than 60 degrees and the minimal RMSD between the ring in question and any Mogul-identified rings is also greater than 60 degrees, then that ring is considered an outlier. The outliers are highlighted in purple. The color gray indicates Mogul did not find sufficient equivalents in the CSD to analyse the geometry.





5.7 Other polymers [i](#)

There are no such residues in this entry.

5.8 Polymer linkage issues [i](#)

There are no chain breaks in this entry.

6 Fit of model and data

6.1 Protein, DNA and RNA chains

In the following table, the column labelled ‘#RSRZ> 2’ contains the number (and percentage) of RSRZ outliers, followed by percent RSRZ outliers for the chain as percentile scores relative to all X-ray entries and entries of similar resolution. The OWAB column contains the minimum, median, 95th percentile and maximum values of the occupancy-weighted average B-factor per residue. The column labelled ‘Q< 0.9’ lists the number of (and percentage) of residues with an average occupancy less than 0.9.

Mol	Chain	Analysed	<RSRZ>	#RSRZ>2	OWAB(Å ²)	Q<0.9
1	A	557/578 (96%)	0.42	16 (2%) 53 56	21, 36, 50, 70	0
1	B	557/578 (96%)	0.52	22 (3%) 43 45	23, 38, 53, 75	0
All	All	1114/1156 (96%)	0.47	38 (3%) 48 50	21, 37, 52, 75	0

All (38) RSRZ outliers are listed below:

Mol	Chain	Res	Type	RSRZ
1	A	532	THR	4.0
1	B	543	SER	4.0
1	B	545	LEU	3.6
1	A	95	HIS	3.6
1	A	562	HIS	3.4
1	A	534	LEU	3.4
1	B	535	LYS	3.0
1	A	541	ALA	3.0
1	A	543	SER	3.0
1	B	540	PRO	3.0
1	B	550	TRP	2.9
1	B	515	GLY	2.6
1	B	562	HIS	2.6
1	B	536	LEU	2.5
1	A	148	GLN	2.5
1	B	202	GLU	2.5
1	B	513	SER	2.5
1	B	147	VAL	2.4
1	B	542	ALA	2.4
1	B	532	THR	2.3
1	B	539	ILE	2.2
1	B	534	LEU	2.2
1	A	542	ALA	2.2
1	B	146	CYS	2.2

Continued on next page...

Continued from previous page...

Mol	Chain	Res	Type	RSRZ
1	A	513	SER	2.2
1	A	135	ASP	2.1
1	A	116	VAL	2.1
1	A	535	LYS	2.1
1	B	512	LEU	2.1
1	B	490	ARG	2.1
1	B	541	ALA	2.1
1	A	545	LEU	2.1
1	B	337	ARG	2.1
1	B	148	GLN	2.0
1	B	544	GLN	2.0
1	A	536	LEU	2.0
1	A	530	VAL	2.0
1	A	8	GLY	2.0

6.2 Non-standard residues in protein, DNA, RNA chains [i](#)

There are no non-standard protein/DNA/RNA residues in this entry.

6.3 Carbohydrates [i](#)

There are no oligosaccharides in this entry.

6.4 Ligands [i](#)

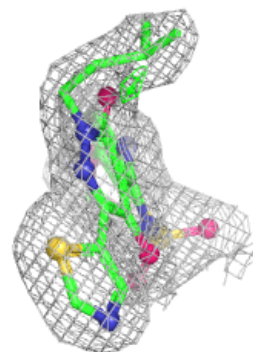
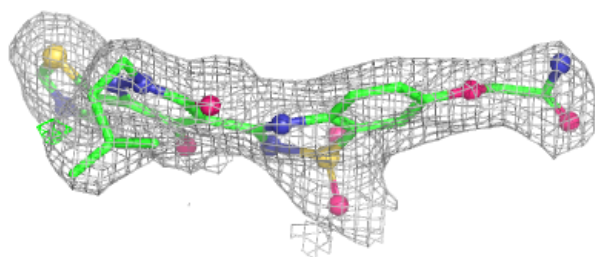
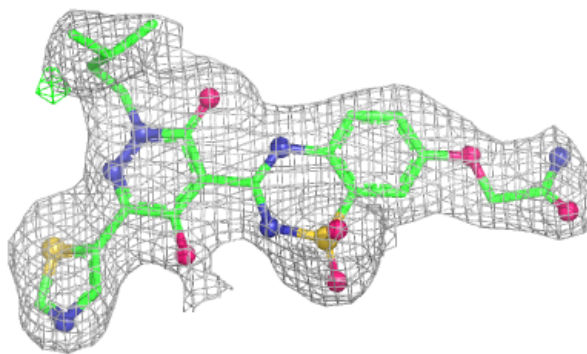
In the following table, the Atoms column lists the number of modelled atoms in the group and the number defined in the chemical component dictionary. The B-factors column lists the minimum, median, 95th percentile and maximum values of B factors of atoms in the group. The column labelled 'Q< 0.9' lists the number of atoms with occupancy less than 0.9.

Mol	Type	Chain	Res	Atoms	RSCC	RSR	B-factors(\AA^2)	Q<0.9
2	1PD	A	579	35/35	0.93	0.09	34,38,41,43	0
2	1PD	B	579	35/35	0.94	0.09	35,40,45,46	0

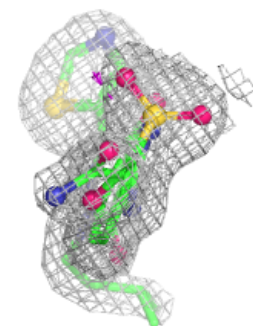
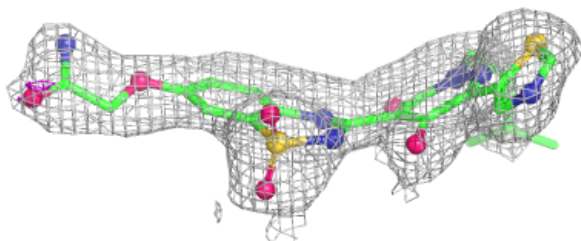
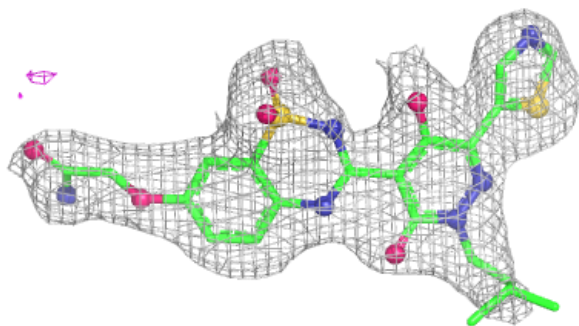
The following is a graphical depiction of the model fit to experimental electron density of all instances of the Ligand of Interest. In addition, ligands with molecular weight > 250 and outliers as shown on the geometry validation Tables will also be included. Each fit is shown from different orientation to approximate a three-dimensional view.

Electron density around 1PD A 579:

$2mF_o-DF_c$ (at 0.7 rmsd) in gray
 mF_o-DF_c (at 3 rmsd) in purple (negative)
and green (positive)

**Electron density around 1PD B 579:**

$2mF_o-DF_c$ (at 0.7 rmsd) in gray
 mF_o-DF_c (at 3 rmsd) in purple (negative)
and green (positive)



6.5 Other polymers ⓘ

There are no such residues in this entry.