



# Full wwPDB X-ray Structure Validation Report ⓘ

Mar 6, 2026 – 01:58 PM UTC

PDB ID : 3CAV / pdb\_00003cav  
Title : Crystal structure of 5beta-reductase (AKR1D1) in complex with NADP+ and 5beta-pregnan-3,20-dione  
Authors : Faucher, F.; Cantin, L.; Breton, R.  
Deposited on : 2008-02-20  
Resolution : 1.90 Å(reported)

This is a Full wwPDB X-ray Structure Validation Report for a publicly released PDB entry.

We welcome your comments at [validation@mail.wwpdb.org](mailto:validation@mail.wwpdb.org)

A user guide is available at

<https://www.wwpdb.org/validation/2017/XrayValidationReportHelp>

with specific help available everywhere you see the ⓘ symbol.

The types of validation reports are described at

<http://www.wwpdb.org/validation/2017/FAQs#types>.

---

The following versions of software and data (see [references ⓘ](#)) were used in the production of this report:

MolProbity	:	4-5-2 with Phenix2.0
Mogul	:	2022.3.0, CSD as543be (2022)
Xtriage (Phenix)	:	2.0
EDS	:	3.0
Buster-report	:	wwPDB partial adaption of 1.1.7 (2018)
Percentile statistics	:	20250101.v01 (using entries in the PDB archive January 1st 2025)
CCP4	:	9.0.010 (Gargrove)
Density-Fitness	:	1.0.12
Ideal geometry (proteins)	:	Engh & Huber (2001)
Ideal geometry (DNA, RNA)	:	Parkinson et al. (1996)
Validation Pipeline (wwPDB-VP)	:	2.49

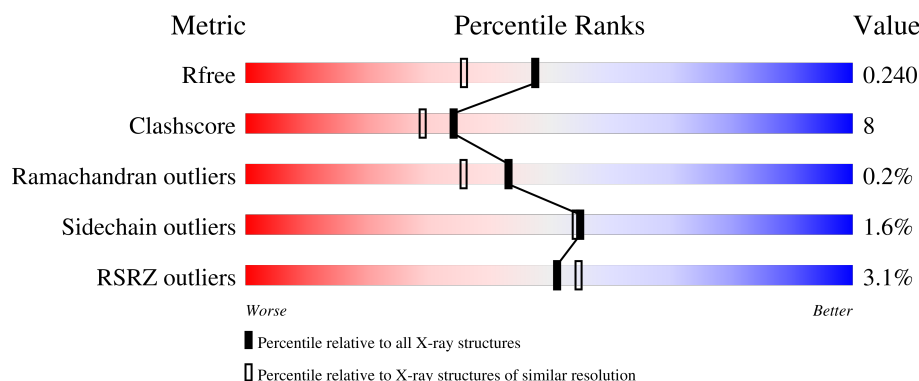
# 1 Overall quality at a glance

The following experimental techniques were used to determine the structure:

*X-RAY DIFFRACTION*

The reported resolution of this entry is 1.90 Å.

Percentile scores (ranging between 0-100) for global validation metrics of the entry are shown in the following graphic. The table shows the number of entries on which the scores are based.



Metric	Whole archive (#Entries)	Similar resolution (#Entries, resolution range(Å))
$R_{free}$	180053	7789 (1.90-1.90)
Clashscore	190562	8410 (1.90-1.90)
Ramachandran outliers	187476	8333 (1.90-1.90)
Sidechain outliers	187428	8333 (1.90-1.90)
RSRZ outliers	180081	7790 (1.90-1.90)

The table below summarises the geometric issues observed across the polymeric chains and their fit to the electron density. The red, orange, yellow and green segments of the lower bar indicate the fraction of residues that contain outliers for  $\geq 3$ , 2, 1 and 0 types of geometric quality criteria respectively. A grey segment represents the fraction of residues that are not modelled. The numeric value for each fraction is indicated below the corresponding segment, with a dot representing fractions  $\leq 5\%$ . The upper red bar (where present) indicates the fraction of residues that have poor fit to the electron density. The numeric value is given above the bar.

Mol	Chain	Length	Quality of chain
1	A	326	<div> <div>2%</div> <div>82%</div> <div>18%</div> </div>
1	B	326	<div> <div>5%</div> <div>82%</div> <div>18%</div> </div>

## 2 Entry composition [i](#)

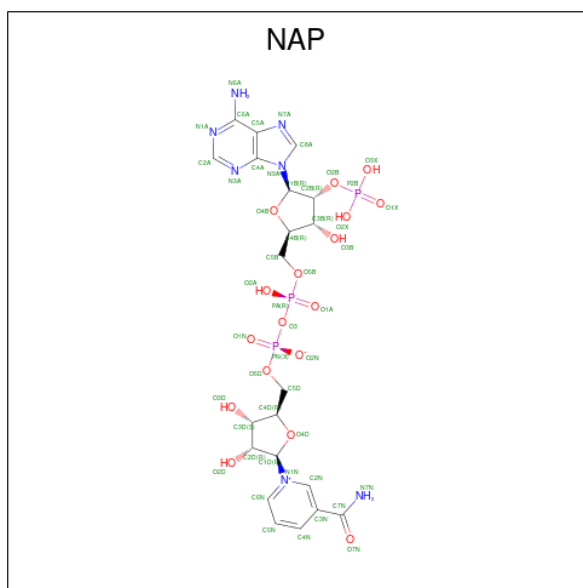
There are 6 unique types of molecules in this entry. The entry contains 6106 atoms, of which 0 are hydrogens and 0 are deuteriums.

In the tables below, the ZeroOcc column contains the number of atoms modelled with zero occupancy, the AltConf column contains the number of residues with at least one atom in alternate conformation and the Trace column contains the number of residues modelled with at most 2 atoms.

- Molecule 1 is a protein called 3-oxo-5-beta-steroid 4-dehydrogenase.

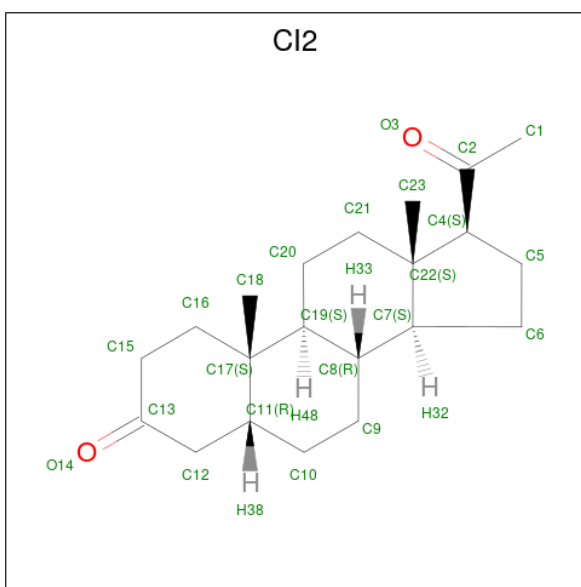
Mol	Chain	Residues	Atoms					ZeroOcc	AltConf	Trace
1	A	325	Total	C	N	O	S	0	5	0
			2669	1707	464	487	11			
1	B	325	Total	C	N	O	S	0	3	0
			2653	1696	461	485	11			

- Molecule 2 is NADP NICOTINAMIDE-ADENINE-DINUCLEOTIDE PHOSPHATE (CCD ID: NAP) (formula:  $C_{21}H_{28}N_7O_{17}P_3$ ).



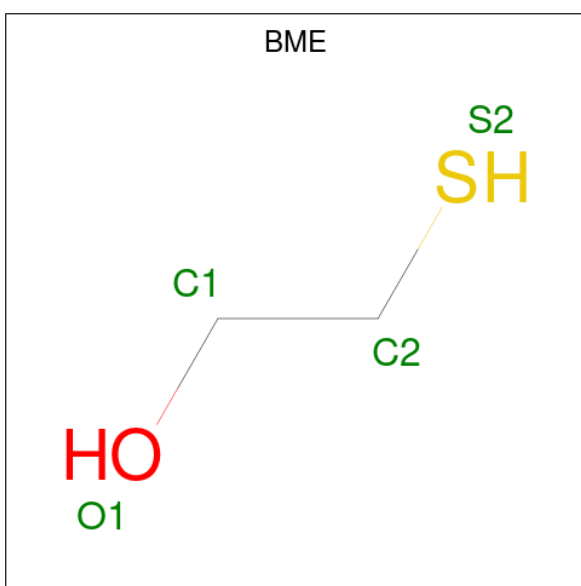
Mol	Chain	Residues	Atoms					ZeroOcc	AltConf
2	A	1	Total	C	N	O	P	0	0
			48	21	7	17	3		
2	B	1	Total	C	N	O	P	0	0
			48	21	7	17	3		

- Molecule 3 is (5BETA)-PREGNANE-3,20-DIONE (CCD ID: C12) (formula:  $C_{21}H_{32}O_2$ ).



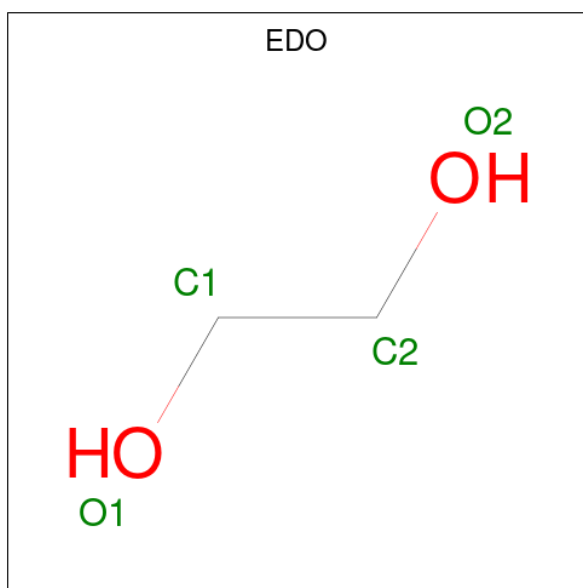
Mol	Chain	Residues	Atoms			ZeroOcc	AltConf
3	A	1	Total	C	O	0	0
			23	21	2		
3	B	1	Total	C	O	0	0
			23	21	2		

- Molecule 4 is BETA-MERCAPTOETHANOL (CCD ID: BME) (formula:  $C_2H_6OS$ ).



Mol	Chain	Residues	Atoms				ZeroOcc	AltConf
4	A	1	Total	C	O	S	0	0
			4	2	1	1		
4	B	1	Total	C	O	S	0	0
			4	2	1	1		

- Molecule 5 is 1,2-ETHANEDIOL (CCD ID: EDO) (formula:  $C_2H_6O_2$ ).



Mol	Chain	Residues	Atoms			ZeroOcc	AltConf
5	A	1	Total	C	O	0	0
			4	2	2		
5	A	1	Total	C	O	0	0
			4	2	2		
5	A	1	Total	C	O	0	0
			4	2	2		
5	B	1	Total	C	O	0	0
			4	2	2		
5	B	1	Total	C	O	0	0
			4	2	2		

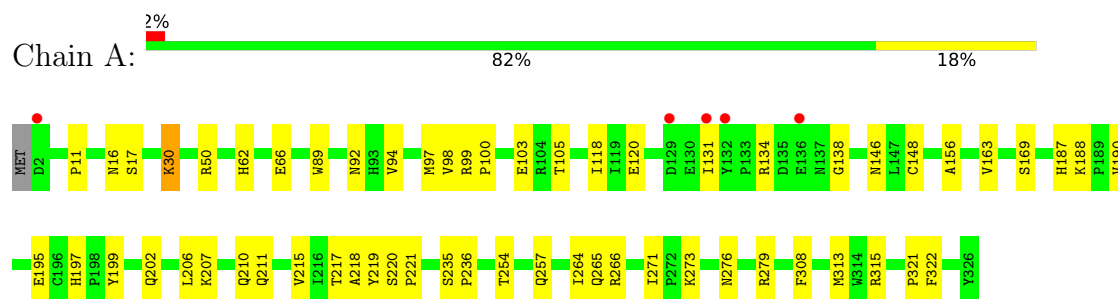
- Molecule 6 is water.

Mol	Chain	Residues	Atoms		ZeroOcc	AltConf
6	A	337	Total	O	0	0
			337	337		
6	B	277	Total	O	0	0
			277	277		

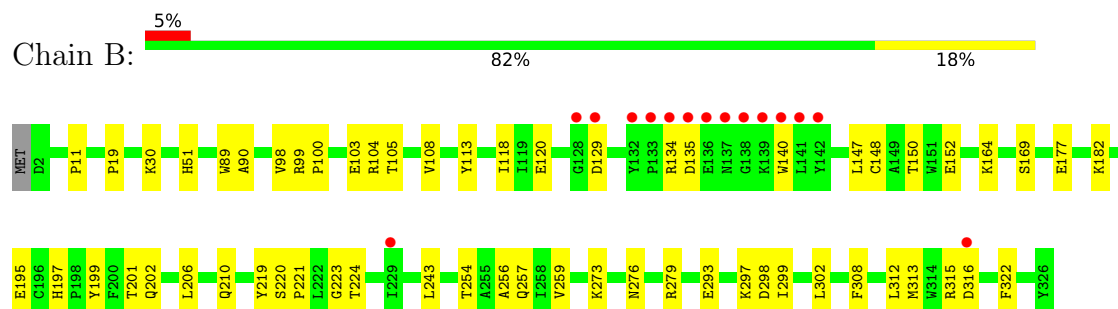
### 3 Residue-property plots

These plots are drawn for all protein, RNA, DNA and oligosaccharide chains in the entry. The first graphic for a chain summarises the proportions of the various outlier classes displayed in the second graphic. The second graphic shows the sequence view annotated by issues in geometry and electron density. Residues are color-coded according to the number of geometric quality criteria for which they contain at least one outlier: green = 0, yellow = 1, orange = 2 and red = 3 or more. A red dot above a residue indicates a poor fit to the electron density ( $RSRZ > 2$ ). Stretches of 2 or more consecutive residues without any outlier are shown as a green connector. Residues present in the sample, but not in the model, are shown in grey.

- Molecule 1: 3-oxo-5-beta-steroid 4-dehydrogenase



- Molecule 1: 3-oxo-5-beta-steroid 4-dehydrogenase



## 4 Data and refinement statistics

Property	Value	Source
Space group	P 21 21 21	Depositor
Cell constants a, b, c, $\alpha$ , $\beta$ , $\gamma$	50.65Å 111.27Å 130.89Å 90.00° 90.00° 90.00°	Depositor
Resolution (Å)	19.72 – 1.90 19.72 – 1.90	Depositor EDS
% Data completeness (in resolution range)	94.3 (19.72-1.90) 94.3 (19.72-1.90)	Depositor EDS
$R_{merge}$	0.07	Depositor
$R_{sym}$	0.06	Depositor
$\langle I/\sigma(I) \rangle$ <sup>1</sup>	3.15 (at 1.90Å)	Xtriage
Refinement program	CNS 1.2	Depositor
R, $R_{free}$	0.207 , 0.236 0.210 , 0.240	Depositor DCC
$R_{free}$ test set	2831 reflections (5.07%)	wwPDB-VP
Wilson B-factor (Å <sup>2</sup> )	13.0	Xtriage
Anisotropy	0.146	Xtriage
Bulk solvent $k_{sol}$ (e/Å <sup>3</sup> ), $B_{sol}$ (Å <sup>2</sup> )	0.35 , 57.4	EDS
L-test for twinning <sup>2</sup>	$\langle  L  \rangle = 0.46$ , $\langle L^2 \rangle = 0.29$	Xtriage
Estimated twinning fraction	No twinning to report.	Xtriage
$F_o, F_c$ correlation	0.92	EDS
Total number of atoms	6106	wwPDB-VP
Average B, all atoms (Å <sup>2</sup> )	13.0	wwPDB-VP

Xtriage's analysis on translational NCS is as follows: *The largest off-origin peak in the Patterson function is 3.78% of the height of the origin peak. No significant pseudotranslation is detected.*

<sup>1</sup>Intensities estimated from amplitudes.

<sup>2</sup>Theoretical values of  $\langle |L| \rangle$ ,  $\langle L^2 \rangle$  for acentric reflections are 0.5, 0.333 respectively for untwinned datasets, and 0.375, 0.2 for perfectly twinned datasets.

## 5 Model quality

### 5.1 Standard geometry

Bond lengths and bond angles in the following residue types are not validated in this section: BME, CI2, NAP, EDO

The Z score for a bond length (or angle) is the number of standard deviations the observed value is removed from the expected value. A bond length (or angle) with  $|Z| > 5$  is considered an outlier worth inspection. RMSZ is the root-mean-square of all Z scores of the bond lengths (or angles).

Mol	Chain	Bond lengths		Bond angles	
		RMSZ	$\# Z  > 5$	RMSZ	$\# Z  > 5$
1	A	0.42	0/2734	0.90	9/3707 (0.2%)
1	B	0.41	0/2718	0.87	6/3684 (0.2%)
All	All	0.42	0/5452	0.88	15/7391 (0.2%)

Chiral center outliers are detected by calculating the chiral volume of a chiral center and verifying if the center is modelled as a planar moiety or with the opposite hand. A planarity outlier is detected by checking planarity of atoms in a peptide group, atoms in a mainchain group or atoms of a sidechain that are expected to be planar.

Mol	Chain	#Chirality outliers	#Planarity outliers
1	A	0	1
1	B	0	1
All	All	0	2

There are no bond length outliers.

All (15) bond angle outliers are listed below:

Mol	Chain	Res	Type	Atoms	Z	Observed(°)	Ideal(°)
1	A	235	SER	CA-C-N	9.28	126.43	119.66
1	A	235	SER	C-N-CA	9.28	126.43	119.66
1	A	236	PRO	N-CA-C	8.58	118.70	110.47
1	A	98	VAL	N-CA-C	7.39	117.47	110.30
1	A	322	PHE	N-CA-C	6.75	121.22	112.92
1	B	98	VAL	N-CA-C	6.33	116.44	110.30
1	B	11	PRO	N-CA-C	6.31	121.10	111.19
1	B	322	PHE	N-CA-C	6.20	119.79	112.72
1	B	120	GLU	N-CA-C	6.00	117.49	111.07
1	B	308	PHE	N-CA-C	-5.95	104.74	112.23
1	B	201	THR	N-CA-C	5.91	120.11	113.01
1	A	308	PHE	N-CA-C	-5.53	105.66	112.90

*Continued on next page...*

*Continued from previous page...*

Mol	Chain	Res	Type	Atoms	Z	Observed(°)	Ideal(°)
1	A	120	GLU	N-CA-C	5.48	117.25	111.28
1	A	11	PRO	N-CA-C	5.38	119.64	111.19
1	A	321	PRO	N-CA-C	5.08	121.24	114.18

There are no chirality outliers.

All (2) planarity outliers are listed below:

Mol	Chain	Res	Type	Group
1	A	219	TYR	Sidechain
1	B	219	TYR	Sidechain

## 5.2 Too-close contacts ⓘ

In the following table, the Non-H and H(model) columns list the number of non-hydrogen atoms and hydrogen atoms in the chain respectively. The H(added) column lists the number of hydrogen atoms added and optimized by MolProbity. The Clashes column lists the number of clashes within the asymmetric unit, whereas Symm-Clashes lists symmetry-related clashes.

Mol	Chain	Non-H	H(model)	H(added)	Clashes	Symm-Clashes
1	A	2669	0	2667	47	0
1	B	2653	0	2650	36	0
2	A	48	0	25	1	0
2	B	48	0	25	2	0
3	A	23	0	32	1	0
3	B	23	0	32	1	0
4	A	4	0	5	1	0
4	B	4	0	6	1	0
5	A	12	0	15	3	0
5	B	8	0	10	0	0
6	A	337	0	0	7	0
6	B	277	0	0	3	0
All	All	6106	0	5467	83	0

The all-atom clashscore is defined as the number of clashes found per 1000 atoms (including hydrogen atoms). The all-atom clashscore for this structure is 8.

All (83) close contacts within the same asymmetric unit are listed below, sorted by their clash magnitude.

Atom-1	Atom-2	Interatomic distance (Å)	Clash overlap (Å)
1:B:148:CYS:SG	4:B:329:BME:S2	2.35	1.23

*Continued on next page...*

*Continued from previous page...*

Atom-1	Atom-2	Interatomic distance (Å)	Clash overlap (Å)
1:A:276:ASN:HD22	1:A:279:ARG:H	1.27	0.80
1:B:243:LEU:HD23	1:B:302[A]:LEU:HD21	1.63	0.79
1:B:316:ASP:HB3	6:B:823:HOH:O	1.87	0.74
1:A:99:ARG:HB2	5:A:330:EDO:H11	1.67	0.74
1:A:254:THR:H	1:A:257:GLN:HE21	1.32	0.74
1:B:276:ASN:HD22	1:B:279:ARG:H	1.34	0.72
1:A:94:VAL:HB	1:A:97:MET:HE2	1.78	0.66
1:B:254:THR:H	1:B:257:GLN:HE21	1.46	0.64
1:B:293:GLU:O	1:B:297:LYS:HG3	1.98	0.63
1:B:273:LYS:HD3	1:B:273:LYS:C	2.25	0.62
1:B:299:ILE:HA	1:B:302[A]:LEU:HD23	1.82	0.62
1:A:215[B]:VAL:HG13	6:A:424:HOH:O	1.99	0.62
1:A:197:HIS:HD2	1:A:199:TYR:H	1.49	0.61
1:B:197:HIS:HD2	1:B:199:TYR:H	1.49	0.60
1:B:206:LEU:O	1:B:210:GLN:HG3	2.02	0.59
1:A:273:LYS:C	1:A:273:LYS:HD3	2.27	0.59
1:A:254:THR:H	1:A:257:GLN:NE2	2.00	0.58
1:B:134:ARG:HD3	1:B:140:TRP:CE2	2.38	0.58
1:A:271[B]:ILE:H	1:A:271[B]:ILE:HD13	1.69	0.57
1:B:147:LEU:HA	1:B:150[A]:THR:HG22	1.85	0.57
1:B:118:ILE:HD12	1:B:169:SER:HB2	1.86	0.57
1:B:254:THR:H	1:B:257:GLN:NE2	2.02	0.57
1:A:315:ARG:HH11	1:A:315:ARG:HB3	1.70	0.56
1:A:50:ARG:HG3	5:A:331:EDO:H21	1.88	0.56
1:B:147:LEU:O	1:B:150[A]:THR:HG22	2.06	0.56
1:A:217:THR:CG2	1:A:271[B]:ILE:HD12	2.37	0.54
1:A:99:ARG:HB3	1:A:100:PRO:HD3	1.91	0.53
1:B:19:PRO:HB2	1:B:51:HIS:HB2	1.91	0.53
1:A:217:THR:HG22	1:A:271[B]:ILE:HD12	1.90	0.52
1:B:113:TYR:CE1	1:B:164:LYS:HD2	2.45	0.52
1:A:271[B]:ILE:HD13	1:A:271[B]:ILE:N	2.24	0.52
1:A:94:VAL:CB	1:A:97:MET:HE2	2.39	0.52
1:A:195:GLU:OE2	1:A:197:HIS:HE1	1.92	0.52
1:A:16[B]:ASN:ND2	6:A:636:HOH:O	2.43	0.52
1:A:92:ASN:HA	1:A:97:MET:HE3	1.92	0.51
1:B:312:LEU:O	1:B:315:ARG:HG2	2.10	0.51
1:A:207:LYS:O	1:A:211:GLN:HG3	2.11	0.51
1:A:266:ARG:HD2	6:A:526:HOH:O	2.10	0.50
1:A:146:ASN:HB3	6:A:628:HOH:O	2.11	0.50
1:A:118:ILE:HD12	1:A:169:SER:HB2	1.94	0.49
1:B:134:ARG:HD3	1:B:140:TRP:CD2	2.47	0.49

*Continued on next page...*

*Continued from previous page...*

Atom-1	Atom-2	Interatomic distance (Å)	Clash overlap (Å)
1:A:94:VAL:CG2	1:A:97:MET:HE2	2.42	0.49
1:A:218:ALA:O	1:A:271[B]:ILE:HD13	2.12	0.48
1:A:134:ARG:HD2	1:A:138:GLY:O	2.12	0.48
1:B:99:ARG:O	1:B:103:GLU:HG3	2.13	0.47
1:A:148:CYS:H	4:A:329:BME:H12	1.79	0.47
1:A:315:ARG:HD3	6:A:668:HOH:O	2.14	0.47
1:B:302[A]:LEU:HD12	6:B:665:HOH:O	2.15	0.47
1:A:207:LYS:HZ1	1:B:129:ASP:CG	2.23	0.47
1:B:152:GLU:CG	1:B:182:LYS:HE3	2.45	0.46
1:B:177:GLU:HG2	6:B:729:HOH:O	2.16	0.46
1:A:220:SER:N	1:A:221:PRO:CD	2.77	0.46
1:A:188:LYS:HE2	6:A:368:HOH:O	2.16	0.46
1:A:16[B]:ASN:CG	1:A:17:SER:N	2.73	0.45
1:A:187:HIS:HD2	6:A:505:HOH:O	1.99	0.45
1:B:104:ARG:O	1:B:108:VAL:HG23	2.17	0.45
1:A:207:LYS:NZ	1:B:129:ASP:CG	2.75	0.44
1:B:220:SER:N	1:B:221:PRO:CD	2.80	0.44
1:B:273:LYS:O	2:B:327:NAP:H8A	2.17	0.44
1:B:195:GLU:OE2	1:B:197:HIS:HE1	2.00	0.44
1:B:279:ARG:HG2	2:B:327:NAP:C5A	2.48	0.44
1:B:298:ASP:O	1:B:302[A]:LEU:CD2	2.66	0.43
1:A:156:ALA:HB3	5:A:330:EDO:O1	2.19	0.43
1:B:89:TRP:CG	1:B:90:ALA:N	2.87	0.43
1:B:99:ARG:HB3	1:B:100:PRO:HD3	2.00	0.43
1:A:99:ARG:O	1:A:103:GLU:HG3	2.18	0.42
1:A:30:LYS:HB2	1:A:30:LYS:NZ	2.34	0.42
1:A:315:ARG:HB3	1:A:315:ARG:NH1	2.34	0.42
1:A:206:LEU:O	1:A:210:GLN:HG3	2.19	0.42
1:A:271[B]:ILE:O	1:A:271[B]:ILE:HG12	2.19	0.42
3:B:328:CI2:H53	3:B:328:CI2:H49	1.83	0.41
1:B:223:GLY:O	1:B:224:THR:OG1	2.34	0.41
1:A:190:VAL:O	1:A:215[B]:VAL:HG12	2.20	0.41
1:A:62:HIS:O	1:A:66:GLU:HG3	2.21	0.41
1:B:256:ALA:O	1:B:259:VAL:HG22	2.20	0.41
1:A:264:ILE:HG13	1:A:265:GLN:N	2.36	0.41
1:B:223:GLY:C	1:B:224:THR:HG23	2.46	0.41
3:A:328:CI2:H53	3:A:328:CI2:H49	1.84	0.41
1:A:89:TRP:CD1	1:A:131:ILE:HG23	2.56	0.40
1:A:273:LYS:O	2:A:327:NAP:H8A	2.21	0.40
1:A:94:VAL:HG23	1:A:97:MET:HE2	2.03	0.40

There are no symmetry-related clashes.

## 5.3 Torsion angles

### 5.3.1 Protein backbone

In the following table, the Percentiles column shows the percent Ramachandran outliers of the chain as a percentile score with respect to all X-ray entries followed by that with respect to entries of similar resolution.

The Analysed column shows the number of residues for which the backbone conformation was analysed, and the total number of residues.

Mol	Chain	Analysed	Favoured	Allowed	Outliers	Percentiles	
1	A	328/326 (101%)	318 (97%)	10 (3%)	0	100	100
1	B	326/326 (100%)	316 (97%)	9 (3%)	1 (0%)	36	29
All	All	654/652 (100%)	634 (97%)	19 (3%)	1 (0%)	43	36

All (1) Ramachandran outliers are listed below:

Mol	Chain	Res	Type
1	B	135	ASP

### 5.3.2 Protein sidechains

In the following table, the Percentiles column shows the percent sidechain outliers of the chain as a percentile score with respect to all X-ray entries followed by that with respect to entries of similar resolution.

The Analysed column shows the number of residues for which the sidechain conformation was analysed, and the total number of residues.

Mol	Chain	Analysed	Rotameric	Outliers	Percentiles	
1	A	294/290 (101%)	289 (98%)	5 (2%)	53	52
1	B	292/290 (101%)	288 (99%)	4 (1%)	59	59
All	All	586/580 (101%)	577 (98%)	9 (2%)	55	56

All (9) residues with a non-rotameric sidechain are listed below:

Mol	Chain	Res	Type
1	A	30	LYS
1	A	105	THR
1	A	163	VAL
1	A	202	GLN
1	A	313	MET

*Continued on next page...*

*Continued from previous page...*

Mol	Chain	Res	Type
1	B	30	LYS
1	B	105	THR
1	B	202	GLN
1	B	313	MET

Sometimes sidechains can be flipped to improve hydrogen bonding and reduce clashes. All (17) such sidechains are listed below:

Mol	Chain	Res	Type
1	A	51	HIS
1	A	92	ASN
1	A	143	HIS
1	A	187	HIS
1	A	197	HIS
1	A	202	GLN
1	A	257	GLN
1	A	276	ASN
1	A	323	HIS
1	B	51	HIS
1	B	59	GLN
1	B	92	ASN
1	B	187	HIS
1	B	197	HIS
1	B	202	GLN
1	B	257	GLN
1	B	276	ASN

### 5.3.3 RNA ⓘ

There are no RNA molecules in this entry.

## 5.4 Non-standard residues in protein, DNA, RNA chains ⓘ

There are no non-standard protein/DNA/RNA residues in this entry.

## 5.5 Carbohydrates ⓘ

There are no oligosaccharides in this entry.

## 5.6 Ligand geometry

11 ligands are modelled in this entry.

In the following table, the Counts columns list the number of bonds (or angles) for which Mogul statistics could be retrieved, the number of bonds (or angles) that are observed in the model and the number of bonds (or angles) that are defined in the Chemical Component Dictionary. The Link column lists molecule types, if any, to which the group is linked. The Z score for a bond length (or angle) is the number of standard deviations the observed value is removed from the expected value. A bond length (or angle) with  $|Z| > 2$  is considered an outlier worth inspection. RMSZ is the root-mean-square of all Z scores of the bond lengths (or angles).

Mol	Type	Chain	Res	Link	Bond lengths			Bond angles		
					Counts	RMSZ	# Z  > 2	Counts	RMSZ	# Z  > 2
3	CI2	A	328	-	26,26,26	2.80	12 (46%)	42,42,42	1.75	11 (26%)
2	NAP	B	327	-	50,52,52	1.52	7 (14%)	71,80,80	0.91	1 (1%)
5	EDO	A	330	-	3,3,3	2.42	1 (33%)	2,2,2	0.41	0
5	EDO	A	332	-	3,3,3	2.29	1 (33%)	2,2,2	0.37	0
4	BME	A	329	1	3,3,3	0.38	0	2,2,2	0.33	0
3	CI2	B	328	-	26,26,26	2.80	11 (42%)	42,42,42	1.66	11 (26%)
5	EDO	A	331	-	3,3,3	2.33	1 (33%)	2,2,2	0.36	0
4	BME	B	329	-	3,3,3	0.34	0	2,2,2	0.30	0
5	EDO	B	330	-	3,3,3	2.34	1 (33%)	2,2,2	0.39	0
2	NAP	A	327	-	50,52,52	1.55	8 (16%)	71,80,80	0.92	2 (2%)
5	EDO	B	331	-	3,3,3	2.33	1 (33%)	2,2,2	0.38	0

In the following table, the Chirals column lists the number of chiral outliers, the number of chiral centers analysed, the number of these observed in the model and the number defined in the Chemical Component Dictionary. Similar counts are reported in the Torsion and Rings columns. '-' means no outliers of that kind were identified.

Mol	Type	Chain	Res	Link	Chirals	Torsions	Rings
3	CI2	A	328	-	-	0/4/62/62	0/4/4/4
2	NAP	B	327	-	-	5/35/67/67	0/5/5/5
5	EDO	A	330	-	-	0/1/1/1	-
5	EDO	A	332	-	-	0/1/1/1	-
4	BME	A	329	1	-	0/1/1/1	-
3	CI2	B	328	-	-	0/4/62/62	0/4/4/4
5	EDO	A	331	-	-	0/1/1/1	-
4	BME	B	329	-	-	0/1/1/1	-
5	EDO	B	330	-	-	1/1/1/1	-
2	NAP	A	327	-	-	4/35/67/67	0/5/5/5
5	EDO	B	331	-	-	1/1/1/1	-

All (43) bond length outliers are listed below:

Mol	Chain	Res	Type	Atoms	Z	Observed(Å)	Ideal(Å)
3	A	328	CI2	O3-C2	8.58	1.43	1.21
3	B	328	CI2	O3-C2	8.56	1.43	1.21
3	A	328	CI2	C6-C5	-6.72	1.35	1.54
3	B	328	CI2	C6-C5	-6.71	1.35	1.54
2	A	327	NAP	C2N-N1N	5.03	1.40	1.35
2	B	327	NAP	C2N-N1N	4.64	1.40	1.35
2	B	327	NAP	C4N-C3N	4.29	1.45	1.39
2	B	327	NAP	C6N-N1N	4.21	1.44	1.35
5	A	330	EDO	O2-C2	-4.16	1.20	1.42
2	A	327	NAP	C6N-N1N	4.14	1.44	1.35
2	A	327	NAP	C4N-C3N	4.01	1.45	1.39
5	B	330	EDO	O2-C2	-4.01	1.21	1.42
5	B	331	EDO	O2-C2	-3.98	1.21	1.42
5	A	331	EDO	O2-C2	-3.96	1.21	1.42
5	A	332	EDO	O2-C2	-3.90	1.22	1.42
2	A	327	NAP	C4A-N3A	3.37	1.40	1.34
2	B	327	NAP	C4A-N3A	3.10	1.40	1.34
3	B	328	CI2	C12-C13	3.06	1.55	1.50
3	A	328	CI2	C8-C19	2.88	1.59	1.53
3	B	328	CI2	C8-C19	2.88	1.59	1.53
3	A	328	CI2	C16-C17	2.85	1.59	1.54
3	B	328	CI2	C16-C17	2.80	1.59	1.54
3	A	328	CI2	C23-C22	2.72	1.58	1.54
3	A	328	CI2	C12-C13	2.68	1.55	1.50
3	B	328	CI2	C23-C22	2.58	1.58	1.54
3	B	328	CI2	C18-C17	2.55	1.58	1.54
2	B	327	NAP	C5N-C4N	2.54	1.43	1.38
2	B	327	NAP	C2A-N1A	2.47	1.38	1.33
2	A	327	NAP	C2A-N1A	2.47	1.38	1.33
3	A	328	CI2	C18-C17	2.42	1.58	1.54
3	A	328	CI2	C20-C19	2.40	1.57	1.53
3	B	328	CI2	C17-C19	2.40	1.60	1.56
2	A	327	NAP	C5N-C4N	2.37	1.43	1.38
3	B	328	CI2	C20-C19	2.37	1.57	1.53
3	A	328	CI2	C21-C20	2.32	1.58	1.53
3	A	328	CI2	C17-C19	2.29	1.60	1.56
3	A	328	CI2	C5-C4	2.27	1.60	1.54
2	A	327	NAP	C2N-C3N	2.27	1.42	1.39
2	A	327	NAP	C2A-N3A	2.26	1.38	1.33
2	B	327	NAP	C2A-N3A	2.22	1.37	1.33
3	B	328	CI2	C21-C20	2.19	1.57	1.53
3	A	328	CI2	C4-C2	2.17	1.55	1.51

*Continued on next page...*

*Continued from previous page...*

Mol	Chain	Res	Type	Atoms	Z	Observed(Å)	Ideal(Å)
3	B	328	CI2	C5-C4	2.13	1.60	1.54

All (25) bond angle outliers are listed below:

Mol	Chain	Res	Type	Atoms	Z	Observed(°)	Ideal(°)
3	A	328	CI2	O3-C2-C1	-4.83	112.64	121.17
3	B	328	CI2	O3-C2-C1	-4.62	113.02	121.17
3	A	328	CI2	C21-C22-C4	3.22	119.98	116.11
3	A	328	CI2	C12-C11-C17	-3.07	109.92	112.75
3	A	328	CI2	C1-C2-C4	3.06	122.94	117.65
3	B	328	CI2	C21-C22-C4	3.05	119.78	116.11
3	B	328	CI2	C1-C2-C4	3.04	122.91	117.65
3	B	328	CI2	C17-C19-C8	-3.04	109.34	112.43
3	B	328	CI2	C12-C11-C17	-2.96	110.02	112.75
3	A	328	CI2	C17-C19-C8	-2.89	109.50	112.43
3	A	328	CI2	C11-C12-C13	-2.83	107.64	112.74
3	B	328	CI2	C20-C21-C22	-2.67	108.24	112.74
3	A	328	CI2	C20-C21-C22	-2.60	108.35	112.74
2	B	327	NAP	C2B-C1B-N9A	2.59	118.01	113.75
3	B	328	CI2	C21-C20-C19	-2.43	109.01	113.14
3	A	328	CI2	C21-C20-C19	-2.42	109.02	113.14
3	A	328	CI2	C18-C17-C19	-2.40	107.94	111.18
2	A	327	NAP	C2B-C1B-N9A	2.37	117.65	113.75
3	A	328	CI2	C5-C6-C7	2.29	109.63	105.14
3	B	328	CI2	C5-C6-C7	2.29	109.62	105.14
3	B	328	CI2	C6-C7-C22	-2.24	101.20	103.84
3	A	328	CI2	C6-C7-C22	-2.19	101.26	103.84
3	B	328	CI2	C11-C12-C13	-2.14	108.88	112.74
2	A	327	NAP	N3A-C2A-N1A	-2.07	125.45	128.58
3	B	328	CI2	C18-C17-C19	-2.01	108.47	111.18

There are no chirality outliers.

All (11) torsion outliers are listed below:

Mol	Chain	Res	Type	Atoms
2	A	327	NAP	PA-O3-PN-O5D
2	B	327	NAP	PA-O3-PN-O5D
2	A	327	NAP	C4D-C5D-O5D-PN
2	B	327	NAP	C4D-C5D-O5D-PN
5	B	330	EDO	O1-C1-C2-O2
2	A	327	NAP	PN-O3-PA-O2A
2	B	327	NAP	PN-O3-PA-O2A

*Continued on next page...*

*Continued from previous page...*

Mol	Chain	Res	Type	Atoms
2	B	327	NAP	C2B-C1B-N9A-C8A
5	B	331	EDO	O1-C1-C2-O2
2	A	327	NAP	PN-O3-PA-O1A
2	B	327	NAP	PN-O3-PA-O1A

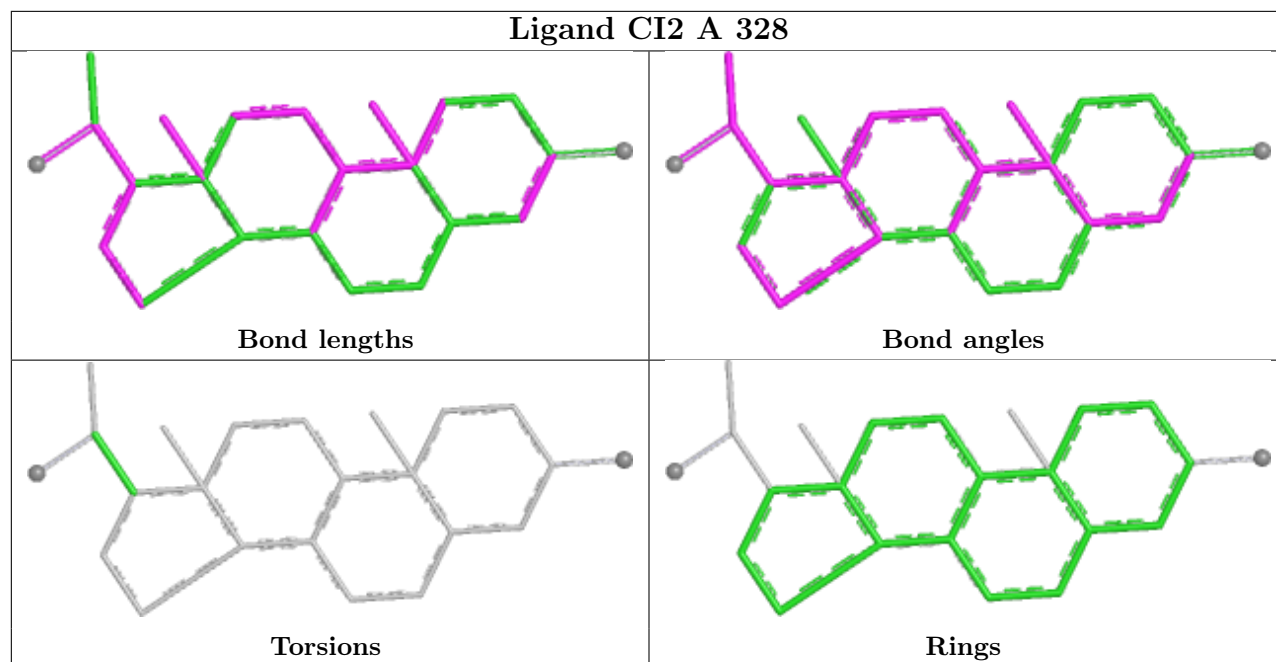
There are no ring outliers.

8 monomers are involved in 10 short contacts:

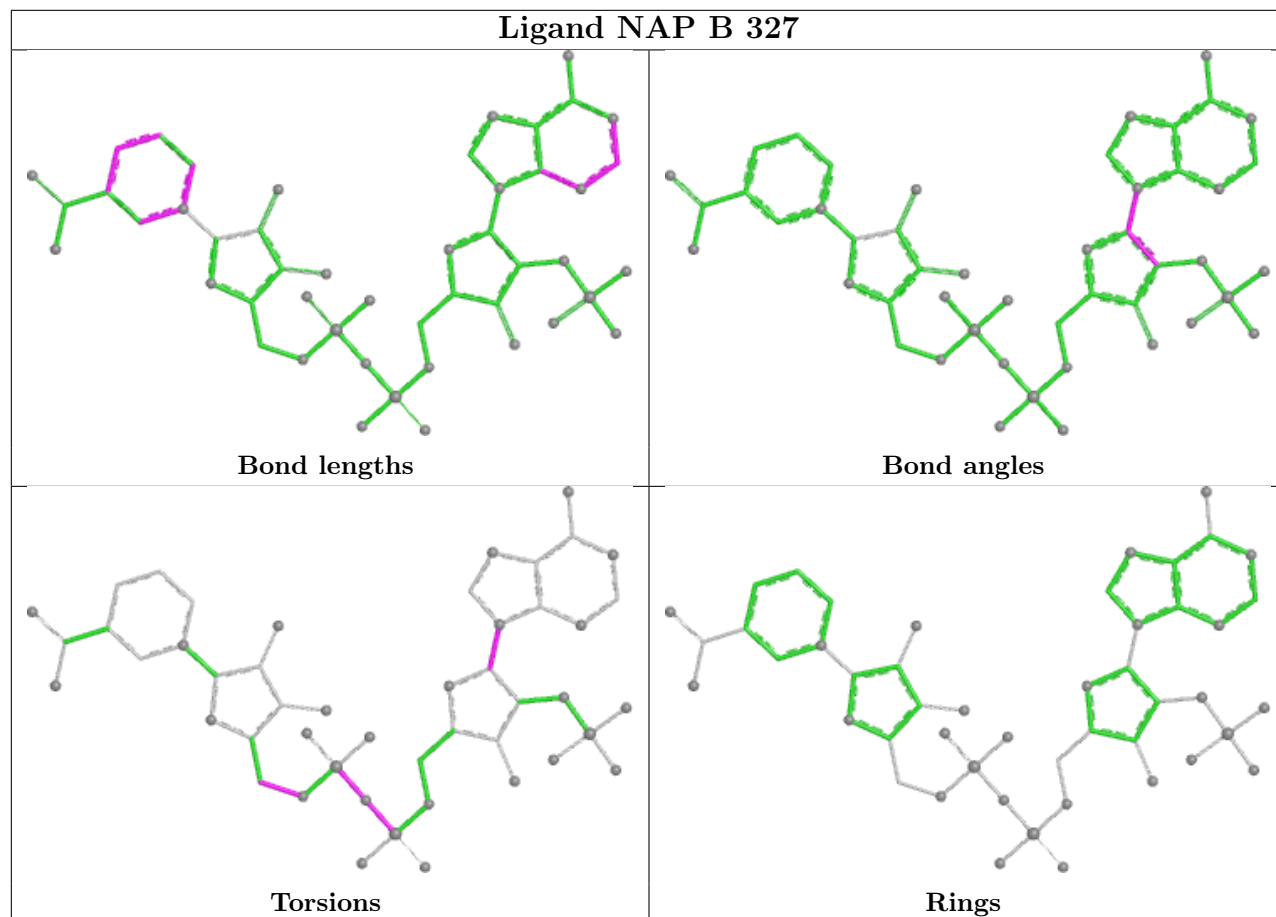
Mol	Chain	Res	Type	Clashes	Symm-Clashes
3	A	328	CI2	1	0
2	B	327	NAP	2	0
5	A	330	EDO	2	0
4	A	329	BME	1	0
3	B	328	CI2	1	0
5	A	331	EDO	1	0
4	B	329	BME	1	0
2	A	327	NAP	1	0

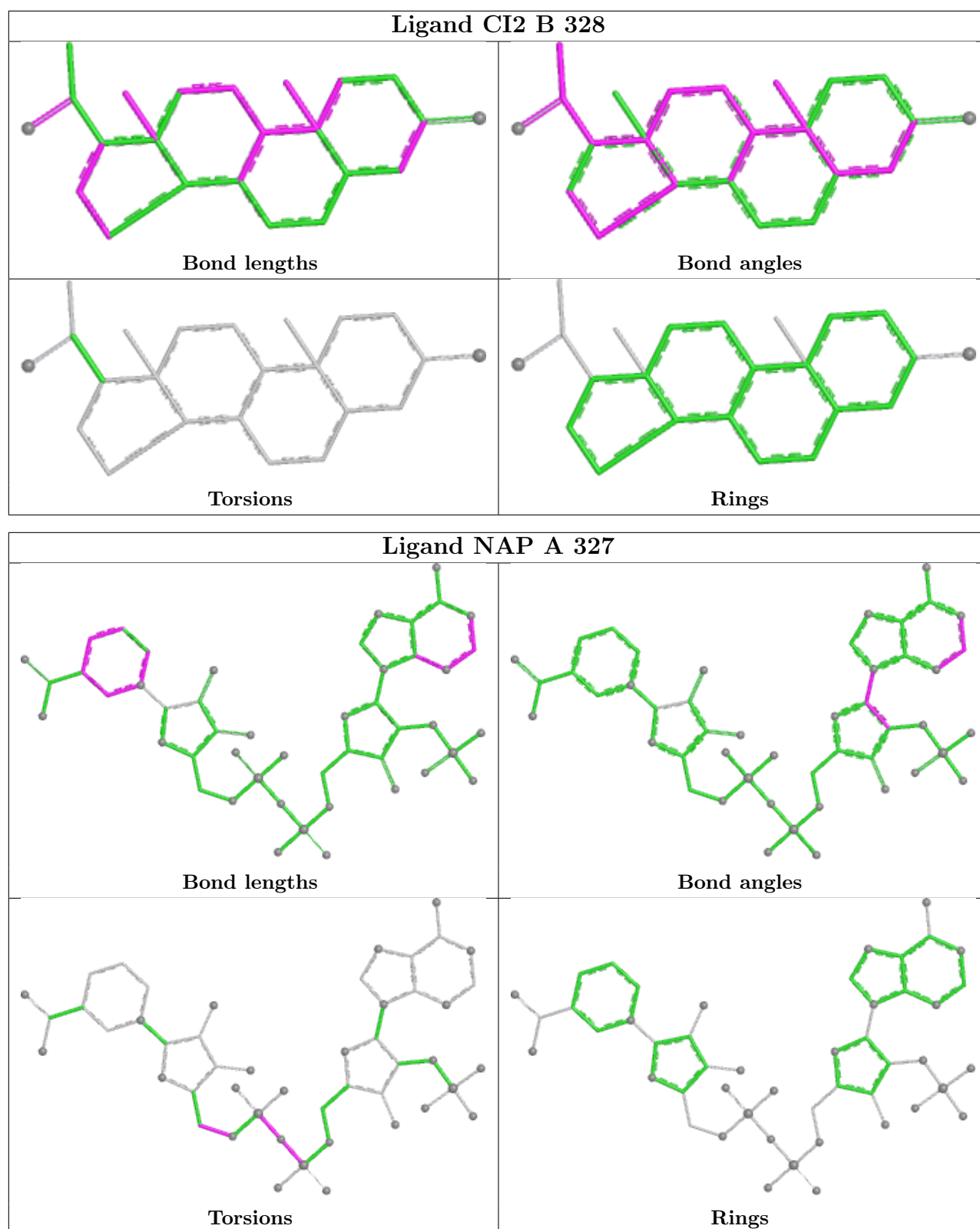
The following is a two-dimensional graphical depiction of Mogul quality analysis of bond lengths, bond angles, torsion angles, and ring geometry for all instances of the Ligand of Interest. In addition, ligands with molecular weight > 250 and outliers as shown on the validation Tables will also be included. For torsion angles, if less than 5% of the Mogul distribution of torsion angles is within 10 degrees of the torsion angle in question, then that torsion angle is considered an outlier. Any bond that is central to one or more torsion angles identified as an outlier by Mogul will be highlighted in the graph. For rings, the root-mean-square deviation (RMSD) between the ring in question and similar rings identified by Mogul is calculated over all ring torsion angles. If the average RMSD is greater than 60 degrees and the minimal RMSD between the ring in question and any Mogul-identified rings is also greater than 60 degrees, then that ring is considered an outlier. The outliers are highlighted in purple. The color gray indicates Mogul did not find sufficient equivalents in the CSD to analyse the geometry.

## Ligand CI2 A 328



## Ligand NAP B 327





## 5.7 Other polymers ⓘ

There are no such residues in this entry.

## 5.8 Polymer linkage issues ⓘ

There are no chain breaks in this entry.

## 6 Fit of model and data

### 6.1 Protein, DNA and RNA chains

In the following table, the column labelled ‘#RSRZ > 2’ contains the number (and percentage) of RSRZ outliers, followed by percent RSRZ outliers for the chain as percentile scores relative to all X-ray entries and entries of similar resolution. The OWAB column contains the minimum, median, 95<sup>th</sup> percentile and maximum values of the occupancy-weighted average B-factor per residue. The column labelled ‘Q < 0.9’ lists the number of (and percentage) of residues with an average occupancy less than 0.9.

Mol	Chain	Analysed	<RSRZ>	#RSRZ>2	OWAB(Å <sup>2</sup> )	Q<0.9
1	A	325/326 (99%)	-0.26	5 (1%) 72 75	2, 10, 21, 34	10 (3%)
1	B	325/326 (99%)	0.00	15 (4%) 37 40	4, 12, 23, 37	14 (4%)
All	All	650/652 (99%)	-0.13	20 (3%) 51 55	2, 11, 22, 37	24 (3%)

All (20) RSRZ outliers are listed below:

Mol	Chain	Res	Type	RSRZ
1	B	133	PRO	6.1
1	A	129	ASP	4.2
1	A	136	GLU	3.6
1	B	136	GLU	3.3
1	B	135	ASP	3.3
1	B	139	LYS	3.2
1	B	316	ASP	2.9
1	B	134	ARG	2.8
1	B	129	ASP	2.8
1	B	132	TYR	2.7
1	A	2	ASP	2.6
1	B	137	ASN	2.6
1	B	229	ILE	2.5
1	A	131	ILE	2.4
1	B	140	TRP	2.4
1	B	142	TYR	2.3
1	B	128	GLY	2.3
1	B	141	LEU	2.3
1	A	132	TYR	2.2
1	B	138	GLY	2.1

## 6.2 Non-standard residues in protein, DNA, RNA chains [i](#)

There are no non-standard protein/DNA/RNA residues in this entry.

## 6.3 Carbohydrates [i](#)

There are no oligosaccharides in this entry.

## 6.4 Ligands [i](#)

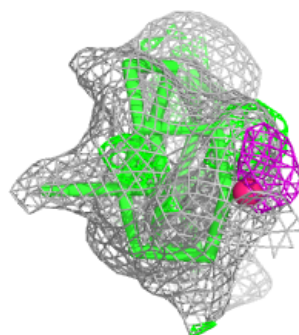
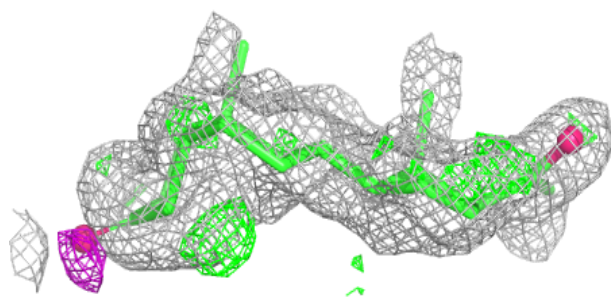
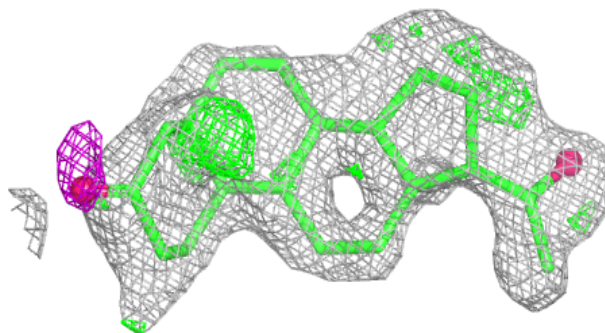
In the following table, the Atoms column lists the number of modelled atoms in the group and the number defined in the chemical component dictionary. The B-factors column lists the minimum, median, 95<sup>th</sup> percentile and maximum values of B factors of atoms in the group. The column labelled 'Q< 0.9' lists the number of atoms with occupancy less than 0.9.

Mol	Type	Chain	Res	Atoms	RSCC	RSR	B-factors( $\text{\AA}^2$ )	Q<0.9
4	BME	B	329	4/4	0.54	0.27	70,71,71,71	0
3	CI2	A	328	23/23	0.69	0.19	23,24,25,29	23
4	BME	A	329	4/4	0.74	0.22	41,41,42,43	0
3	CI2	B	328	23/23	0.77	0.12	18,22,25,27	23
5	EDO	A	332	4/4	0.86	0.10	24,24,25,27	0
5	EDO	B	331	4/4	0.86	0.16	21,24,24,25	0
5	EDO	B	330	4/4	0.87	0.12	28,32,32,34	0
5	EDO	A	331	4/4	0.89	0.12	14,20,23,23	0
5	EDO	A	330	4/4	0.94	0.12	10,17,17,17	0
2	NAP	B	327	48/48	0.98	0.05	4,9,11,12	0
2	NAP	A	327	48/48	0.98	0.05	2,5,9,10	0

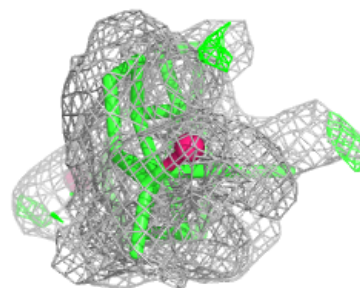
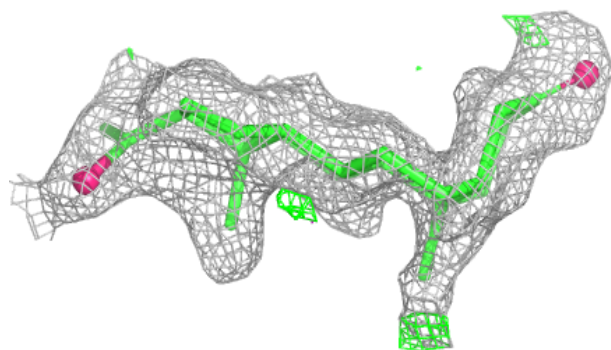
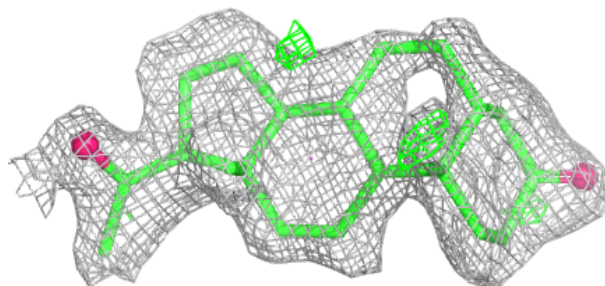
The following is a graphical depiction of the model fit to experimental electron density of all instances of the Ligand of Interest. In addition, ligands with molecular weight > 250 and outliers as shown on the geometry validation Tables will also be included. Each fit is shown from different orientation to approximate a three-dimensional view.

**Electron density around CI2 A 328:**

$2mF_o-DF_c$  (at 0.7 rmsd) in gray  
 $mF_o-DF_c$  (at 3 rmsd) in purple (negative)  
and green (positive)

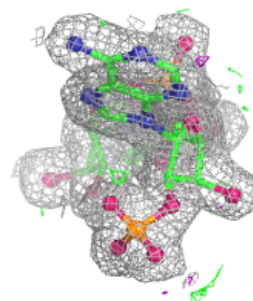
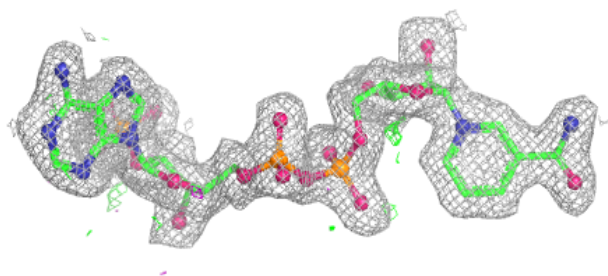
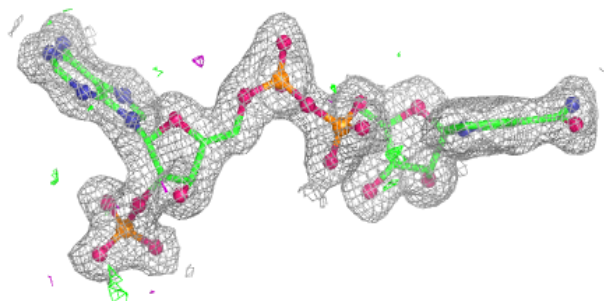
**Electron density around CI2 B 328:**

$2mF_o-DF_c$  (at 0.7 rmsd) in gray  
 $mF_o-DF_c$  (at 3 rmsd) in purple (negative)  
and green (positive)

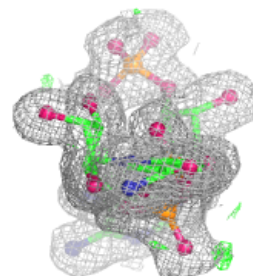
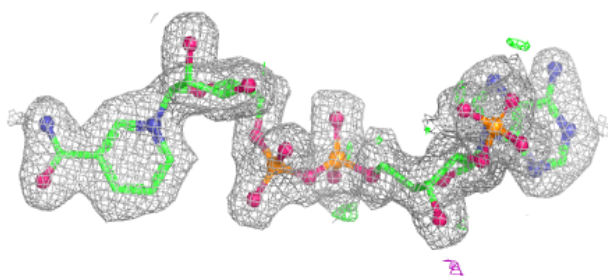
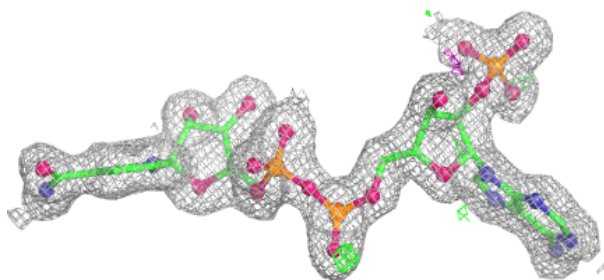


**Electron density around NAP B 327:**

$2mF_o-DF_c$  (at 0.7 rmsd) in gray  
 $mF_o-DF_c$  (at 3 rmsd) in purple (negative)  
and green (positive)

**Electron density around NAP A 327:**

$2mF_o-DF_c$  (at 0.7 rmsd) in gray  
 $mF_o-DF_c$  (at 3 rmsd) in purple (negative)  
and green (positive)



## 6.5 Other polymers [i](#)

There are no such residues in this entry.