



Full wwPDB X-ray Structure Validation Report ⓘ

Mar 5, 2026 – 02:18 PM UTC

PDB ID : 3I6D / pdb_00003i6d
Title : Crystal structure of PPO from bacillus subtilis with AF
Authors : Shen, Y.
Deposited on : 2009-07-06
Resolution : 2.90 Å(reported)

This is a Full wwPDB X-ray Structure Validation Report for a publicly released PDB entry.

We welcome your comments at validation@mail.wwpdb.org

A user guide is available at

<https://www.wwpdb.org/validation/2017/XrayValidationReportHelp>

with specific help available everywhere you see the ⓘ symbol.

The types of validation reports are described at

<http://www.wwpdb.org/validation/2017/FAQs#types>.

The following versions of software and data (see [references ⓘ](#)) were used in the production of this report:

MolProbity : 4-5-2 with Phenix2.0
Mogul : 2022.3.0, CSD as543be (2022)
Xtriage (Phenix) : 2.0
EDS : 3.0
Buster-report : wwPDB partial adaption of 1.1.7 (2018)
Percentile statistics : 20250101.v01 (using entries in the PDB archive January 1st 2025)
CCP4 : 9.0.010 (Gargrove)
Density-Fitness : 1.0.12
Ideal geometry (proteins) : Engh & Huber (2001)
Ideal geometry (DNA, RNA) : Parkinson et al. (1996)
Validation Pipeline (wwPDB-VP) : 2.49

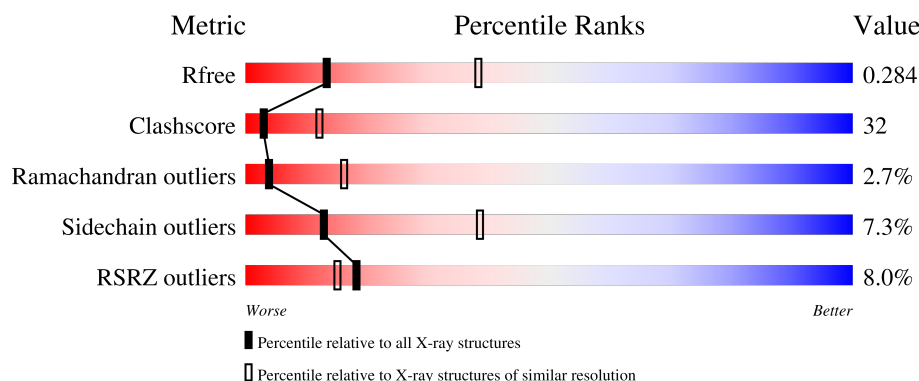
1 Overall quality at a glance

The following experimental techniques were used to determine the structure:

X-RAY DIFFRACTION

The reported resolution of this entry is 2.90 Å.

Percentile scores (ranging between 0-100) for global validation metrics of the entry are shown in the following graphic. The table shows the number of entries on which the scores are based.



Metric	Whole archive (#Entries)	Similar resolution (#Entries, resolution range(Å))
R_{free}	180053	2481 (2.90-2.90)
Clashscore	190562	2690 (2.90-2.90)
Ramachandran outliers	187476	2623 (2.90-2.90)
Sidechain outliers	187428	2625 (2.90-2.90)
RSRZ outliers	180081	2481 (2.90-2.90)

The table below summarises the geometric issues observed across the polymeric chains and their fit to the electron density. The red, orange, yellow and green segments of the lower bar indicate the fraction of residues that contain outliers for ≥ 3 , 2, 1 and 0 types of geometric quality criteria respectively. A grey segment represents the fraction of residues that are not modelled. The numeric value for each fraction is indicated below the corresponding segment, with a dot representing fractions $\leq 5\%$. The upper red bar (where present) indicates the fraction of residues that have poor fit to the electron density. The numeric value is given above the bar.

Mol	Chain	Length	Quality of chain
1	A	470	<div> <div>6%</div> <div> <div></div> <div>44%</div> <div>39%</div> <div>5%</div> <div>12%</div> </div> </div>
1	B	470	<div> <div>8%</div> <div> <div></div> <div>46%</div> <div>37%</div> <div>5%</div> <div>11%</div> </div> </div>

2 Entry composition ⓘ

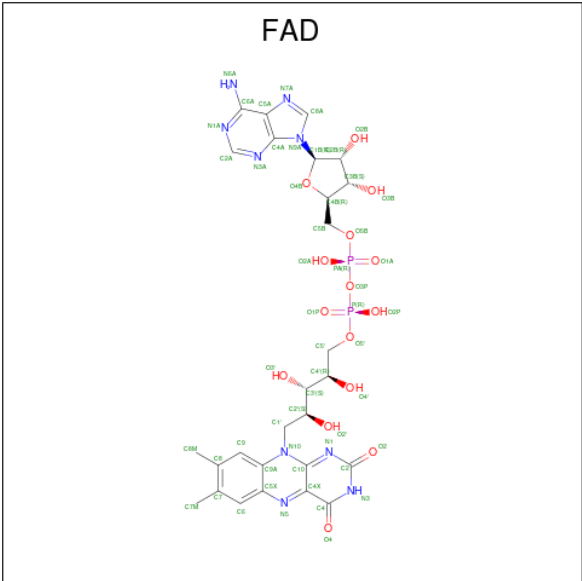
There are 5 unique types of molecules in this entry. The entry contains 6525 atoms, of which 0 are hydrogens and 0 are deuteriums.

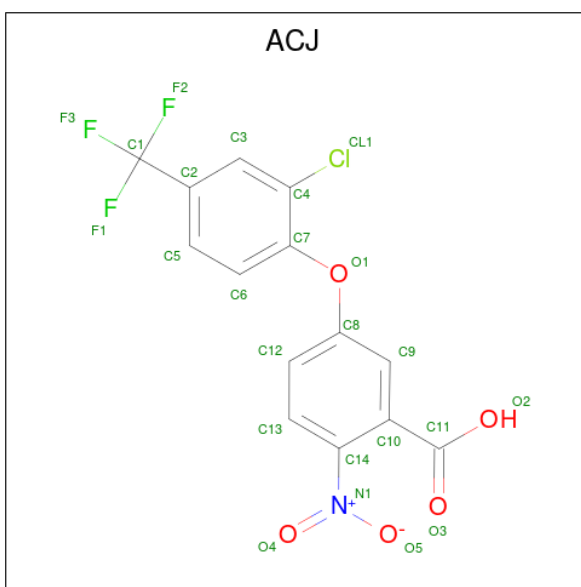
In the tables below, the ZeroOcc column contains the number of atoms modelled with zero occupancy, the AltConf column contains the number of residues with at least one atom in alternate conformation and the Trace column contains the number of residues modelled with at most 2 atoms.

- Molecule 1 is a protein called Protoporphyrinogen oxidase.

Mol	Chain	Residues	Atoms					ZeroOcc	AltConf	Trace
1	A	414	Total	C	N	O	S	0	0	0
			3162	2007	532	608	15			
1	B	419	Total	C	N	O	S	0	0	0
			3188	2022	538	613	15			

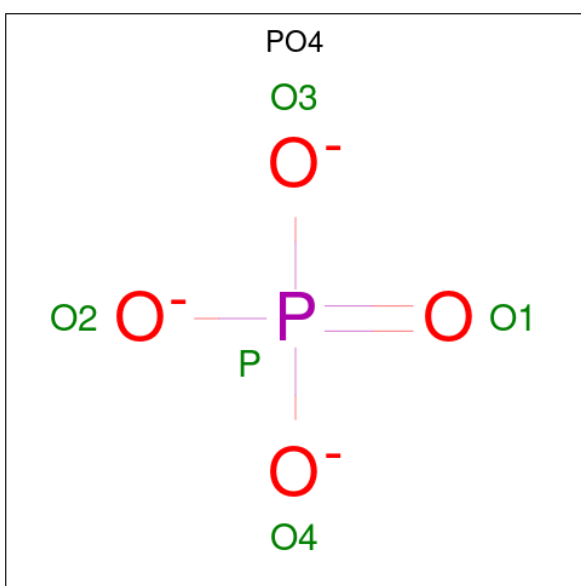
- Molecule 2 is FLAVIN-ADENINE DINUCLEOTIDE (CCD ID: FAD) (formula: C₂₇H₃₃N₉O₁₅P₂).





Mol	Chain	Residues	Atoms						ZeroOcc	AltConf
3	A	1	Total	C	Cl	F	N	O	0	0
			24	14	1	3	1	5		
3	B	1	Total	C	Cl	F	N	O	0	0
			24	14	1	3	1	5		

- Molecule 4 is PHOSPHATE ION (CCD ID: PO4) (formula: O_4P).



Mol	Chain	Residues	Atoms		ZeroOcc	AltConf
4	A	1	Total	O P	0	0
			5	4 1		
4	B	1	Total	O P	0	0
			5	4 1		

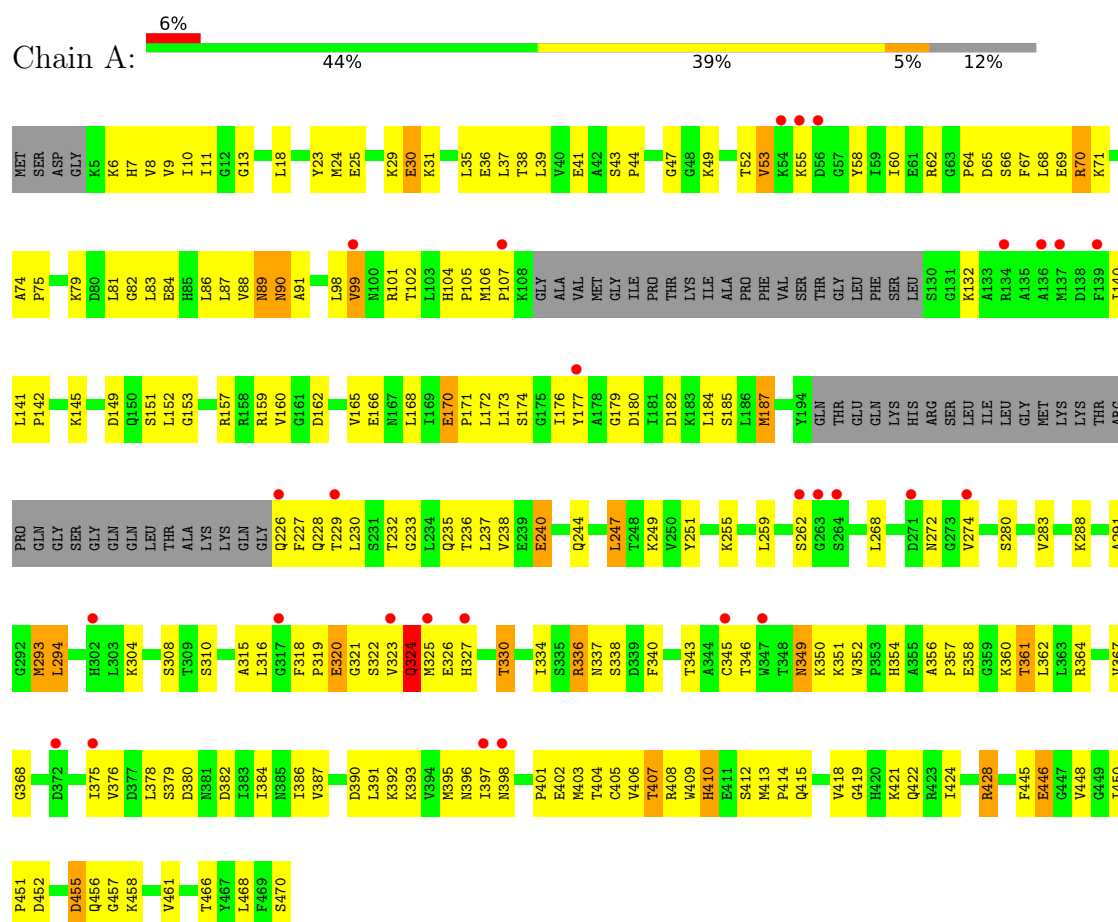
- Molecule 5 is water.

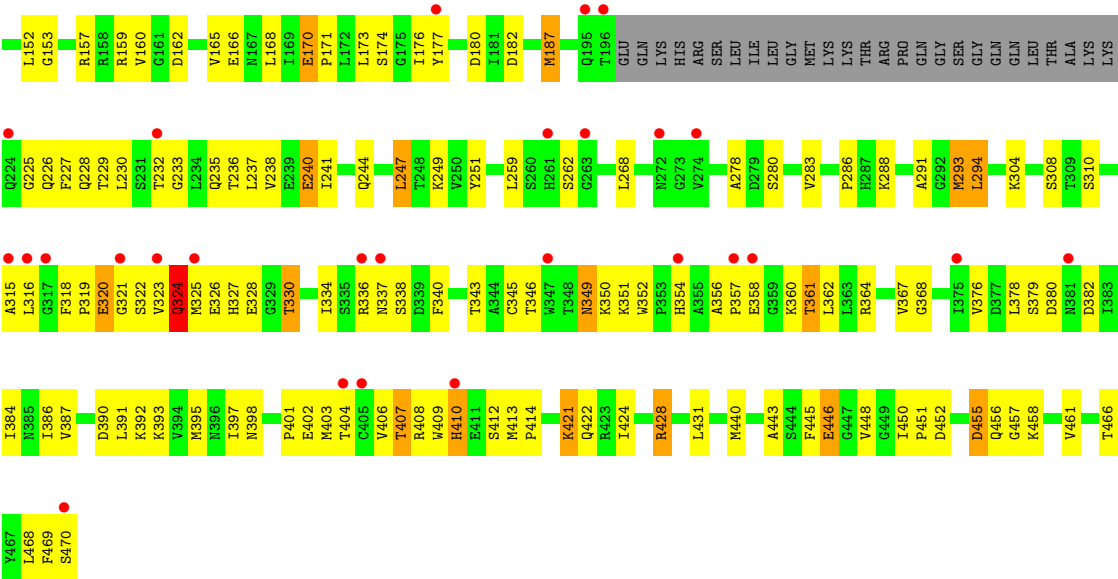
Mol	Chain	Residues	Atoms		ZeroOcc	AltConf
5	A	5	Total 5	O 5	0	0
5	B	6	Total 6	O 6	0	0

3 Residue-property plots [i](#)

These plots are drawn for all protein, RNA, DNA and oligosaccharide chains in the entry. The first graphic for a chain summarises the proportions of the various outlier classes displayed in the second graphic. The second graphic shows the sequence view annotated by issues in geometry and electron density. Residues are color-coded according to the number of geometric quality criteria for which they contain at least one outlier: green = 0, yellow = 1, orange = 2 and red = 3 or more. A red dot above a residue indicates a poor fit to the electron density ($RSRZ > 2$). Stretches of 2 or more consecutive residues without any outlier are shown as a green connector. Residues present in the sample, but not in the model, are shown in grey.

• Molecule 1: Protoporphyrinogen oxidase





4 Data and refinement statistics

Property	Value	Source
Space group	P 41 21 2	Depositor
Cell constants a, b, c, α , β , γ	96.17Å 96.17Å 299.82Å 90.00° 90.00° 90.00°	Depositor
Resolution (Å)	29.92 – 2.90 29.92 – 2.90	Depositor EDS
% Data completeness (in resolution range)	95.9 (29.92-2.90) 95.8 (29.92-2.90)	Depositor EDS
R_{merge}	0.07	Depositor
R_{sym}	(Not available)	Depositor
$\langle I/\sigma(I) \rangle$ ¹	2.74 (at 2.80Å)	Xtriage
Refinement program	CNS 1.2	Depositor
R, R_{free}	0.272 , 0.293 0.265 , 0.284	Depositor DCC
R_{free} test set	1742 reflections (4.97%)	wwPDB-VP
Wilson B-factor (Å ²)	70.1	Xtriage
Anisotropy	0.229	Xtriage
Bulk solvent k_{sol} (e/Å ³), B_{sol} (Å ²)	0.35 , 41.0	EDS
L-test for twinning ²	$\langle L \rangle = 0.49$, $\langle L^2 \rangle = 0.33$	Xtriage
Estimated twinning fraction	No twinning to report.	Xtriage
F_o, F_c correlation	0.91	EDS
Total number of atoms	6525	wwPDB-VP
Average B, all atoms (Å ²)	77.0	wwPDB-VP

Xtriage's analysis on translational NCS is as follows: *The largest off-origin peak in the Patterson function is 4.47% of the height of the origin peak. No significant pseudotranslation is detected.*

¹Intensities estimated from amplitudes.

²Theoretical values of $\langle |L| \rangle$, $\langle L^2 \rangle$ for acentric reflections are 0.5, 0.333 respectively for untwinned datasets, and 0.375, 0.2 for perfectly twinned datasets.

5 Model quality

5.1 Standard geometry

Bond lengths and bond angles in the following residue types are not validated in this section: ACJ, PO4, FAD

The Z score for a bond length (or angle) is the number of standard deviations the observed value is removed from the expected value. A bond length (or angle) with $|Z| > 5$ is considered an outlier worth inspection. RMSZ is the root-mean-square of all Z scores of the bond lengths (or angles).

Mol	Chain	Bond lengths		Bond angles	
		RMSZ	# $ Z > 5$	RMSZ	# $ Z > 5$
1	A	0.50	0/3220	0.92	4/4353 (0.1%)
1	B	0.51	0/3246	1.00	10/4388 (0.2%)
All	All	0.51	0/6466	0.96	14/8741 (0.2%)

There are no bond length outliers.

All (14) bond angle outliers are listed below:

Mol	Chain	Res	Type	Atoms	Z	Observed(°)	Ideal(°)
1	B	106	MET	C-N-CD	-14.43	88.86	120.60
1	B	131	GLY	N-CA-C	-10.04	103.13	115.08
1	B	106	MET	CA-C-N	10.01	151.03	127.00
1	B	106	MET	C-N-CA	10.01	151.03	127.00
1	A	410	HIS	N-CA-C	8.40	120.12	110.97
1	B	410	HIS	N-CA-C	7.39	119.02	110.97
1	B	105	PRO	N-CA-C	-6.88	98.30	112.47
1	B	132	LYS	N-CA-C	-6.18	103.86	112.45
1	A	132	LYS	N-CA-C	-6.06	104.96	112.90
1	B	446	GLU	N-CA-C	5.99	116.98	108.54
1	B	166	GLU	N-CA-C	5.82	117.30	111.07
1	A	446	GLU	N-CA-C	5.72	116.60	108.54
1	A	166	GLU	N-CA-C	5.48	116.94	111.07
1	B	106	MET	N-CA-C	5.31	121.54	109.81

There are no chirality outliers.

There are no planarity outliers.

5.2 Too-close contacts ⓘ

In the following table, the Non-H and H(model) columns list the number of non-hydrogen atoms and hydrogen atoms in the chain respectively. The H(added) column lists the number of hydrogen atoms added and optimized by MolProbity. The Clashes column lists the number of clashes within the asymmetric unit, whereas Symm-Clashes lists symmetry-related clashes.

Mol	Chain	Non-H	H(model)	H(added)	Clashes	Symm-Clashes
1	A	3162	0	3178	217	0
1	B	3188	0	3193	204	1
2	A	53	0	31	15	0
2	B	53	0	31	7	0
3	A	24	0	6	1	0
3	B	24	0	6	0	0
4	A	5	0	0	0	0
4	B	5	0	0	0	0
5	A	5	0	0	0	0
5	B	6	0	0	0	0
All	All	6525	0	6445	413	1

The all-atom clashscore is defined as the number of clashes found per 1000 atoms (including hydrogen atoms). The all-atom clashscore for this structure is 32.

All (413) close contacts within the same asymmetric unit are listed below, sorted by their clash magnitude.

Atom-1	Atom-2	Interatomic distance (Å)	Clash overlap (Å)
1:B:90:ASN:HD22	1:B:90:ASN:H	1.09	0.98
1:B:446:GLU:H	1:B:456:GLN:HE22	1.12	0.97
1:A:247:LEU:HD12	1:A:247:LEU:H	1.30	0.97
1:A:90:ASN:H	1:A:90:ASN:HD22	1.11	0.96
1:A:65:ASP:HB2	1:A:364:ARG:HH12	1.28	0.93
1:B:247:LEU:H	1:B:247:LEU:HD12	1.32	0.93
1:A:229:THR:HG22	1:A:230:LEU:H	1.34	0.92
1:B:65:ASP:HB2	1:B:364:ARG:HH12	1.32	0.92
1:B:326:GLU:HG3	1:B:327:HIS:H	1.35	0.92
1:A:326:GLU:HG3	1:A:327:HIS:H	1.35	0.91
1:A:446:GLU:H	1:A:456:GLN:HE22	1.13	0.90
1:B:229:THR:HG22	1:B:230:LEU:H	1.36	0.88
1:B:392:LYS:HG3	1:B:397:ILE:HD12	1.56	0.88
1:A:392:LYS:HG3	1:A:397:ILE:HD12	1.57	0.87
1:B:448:VAL:O	2:B:700:FAD:O3'	1.94	0.86
1:A:384:ILE:HD13	1:A:404:THR:HG21	1.58	0.85
1:B:384:ILE:HD13	1:B:404:THR:HG21	1.57	0.84

Continued on next page...

Continued from previous page...

Atom-1	Atom-2	Interatomic distance (Å)	Clash overlap (Å)
1:A:232:THR:HB	1:A:236:THR:HG21	1.60	0.83
1:B:232:THR:HB	1:B:236:THR:HG21	1.60	0.83
1:A:349:ASN:OD1	1:A:361:THR:HA	1.79	0.82
1:A:409:TRP:CE2	2:A:600:FAD:HM72	2.13	0.82
1:B:349:ASN:OD1	1:B:361:THR:HA	1.79	0.81
1:A:90:ASN:ND2	1:A:227:PHE:H	1.79	0.80
1:B:90:ASN:ND2	1:B:227:PHE:H	1.79	0.80
1:B:101:ARG:O	1:B:102:THR:HG23	1.84	0.78
1:A:24:MET:HG2	1:A:37:LEU:HD13	1.65	0.77
1:B:8:VAL:HG22	1:B:280:SER:HB3	1.67	0.77
1:B:24:MET:HG2	1:B:37:LEU:HD13	1.66	0.77
1:B:29:LYS:HE3	1:B:247:LEU:HD21	1.67	0.76
1:A:247:LEU:HD12	1:A:247:LEU:N	2.00	0.76
1:A:101:ARG:O	1:A:102:THR:HG23	1.85	0.76
1:A:90:ASN:H	1:A:90:ASN:ND2	1.84	0.75
1:B:330:THR:HG23	1:B:351:LYS:HD2	1.69	0.75
1:A:6:LYS:HD3	1:A:468:LEU:HD22	1.68	0.75
1:A:70:ARG:HH11	1:A:70:ARG:HG2	1.52	0.74
1:A:149:ASP:OD1	1:A:187:MET:HB2	1.88	0.73
1:A:330:THR:HG23	1:A:351:LYS:HD2	1.68	0.73
1:B:247:LEU:HD12	1:B:247:LEU:N	2.00	0.73
1:A:152:LEU:HD13	1:A:173:LEU:HD13	1.71	0.73
1:B:326:GLU:HG3	1:B:327:HIS:N	2.04	0.72
1:A:98:LEU:HD23	1:A:334:ILE:HG13	1.72	0.72
1:B:98:LEU:HD23	1:B:334:ILE:HG13	1.72	0.71
1:B:90:ASN:HD21	1:B:227:PHE:H	1.37	0.71
1:B:70:ARG:HG2	1:B:70:ARG:HH11	1.55	0.71
1:B:90:ASN:H	1:B:90:ASN:ND2	1.83	0.71
1:A:90:ASN:HD21	1:A:227:PHE:H	1.37	0.70
1:A:229:THR:HG22	1:A:230:LEU:N	2.06	0.70
1:A:326:GLU:HG3	1:A:327:HIS:N	2.05	0.70
1:A:44:PRO:HG3	1:B:410:HIS:CE1	2.26	0.70
1:A:349:ASN:HD21	1:A:362:LEU:HB3	1.57	0.70
1:B:149:ASP:OD1	1:B:187:MET:HB2	1.92	0.70
1:A:255:LYS:HA	2:A:600:FAD:N1A	2.06	0.70
1:A:83:LEU:HD11	1:A:240:GLU:HG3	1.74	0.69
1:B:226:GLN:N	1:B:226:GLN:OE1	2.25	0.69
1:B:349:ASN:HD21	1:B:362:LEU:H	1.41	0.69
1:B:358:GLU:H	1:B:358:GLU:CD	2.00	0.69
1:B:349:ASN:HD21	1:B:362:LEU:HB3	1.58	0.69
1:B:409:TRP:CE2	2:B:700:FAD:HM72	2.29	0.68

Continued on next page...

Continued from previous page...

Atom-1	Atom-2	Interatomic distance (Å)	Clash overlap (Å)
1:A:90:ASN:HD21	1:A:226:GLN:N	1.92	0.68
1:B:30:GLU:C	1:B:31:LYS:HD2	2.19	0.68
1:A:358:GLU:CD	1:A:358:GLU:H	2.01	0.68
1:B:23:TYR:CE2	1:B:458:LYS:HE3	2.29	0.68
1:A:29:LYS:HE3	1:A:247:LEU:HD21	1.75	0.68
1:A:30:GLU:C	1:A:31:LYS:HD2	2.19	0.67
1:B:315:ALA:O	1:B:316:LEU:HD23	1.95	0.67
1:A:24:MET:HG2	1:A:37:LEU:CD1	2.24	0.67
1:A:349:ASN:HD21	1:A:362:LEU:H	1.40	0.67
1:A:315:ALA:O	1:A:316:LEU:HD23	1.94	0.67
1:B:152:LEU:HD13	1:B:173:LEU:HD13	1.76	0.66
1:B:157:ARG:NH2	1:B:182:ASP:OD1	2.26	0.66
1:B:87:LEU:HD22	1:B:228:GLN:NE2	2.10	0.66
1:A:249:LYS:HD3	1:A:251:TYR:OH	1.96	0.66
1:B:62:ARG:HH21	1:B:407:THR:HB	1.58	0.66
1:A:8:VAL:HG22	1:A:280:SER:HB3	1.77	0.66
1:B:83:LEU:HD11	1:B:240:GLU:HG3	1.78	0.66
1:B:87:LEU:HD22	1:B:228:GLN:HE21	1.59	0.66
1:A:247:LEU:H	1:A:247:LEU:CD1	2.07	0.65
1:B:165:VAL:O	1:B:170:GLU:HB3	1.97	0.65
1:B:229:THR:HG22	1:B:230:LEU:N	2.07	0.65
1:B:142:PRO:HD2	1:B:159:ARG:HD3	1.79	0.65
1:A:324:GLN:H	1:A:324:GLN:NE2	1.95	0.65
1:A:320:GLU:C	1:A:322:SER:H	2.03	0.65
1:A:448:VAL:O	2:A:600:FAD:O3'	2.15	0.65
1:A:446:GLU:H	1:A:456:GLN:NE2	1.91	0.65
1:A:274:VAL:CG2	1:B:45:ARG:HB3	2.26	0.65
1:A:87:LEU:HD13	1:A:228:GLN:HE22	1.62	0.64
1:A:249:LYS:HB3	1:A:251:TYR:CE2	2.32	0.64
1:B:24:MET:HG2	1:B:37:LEU:CD1	2.26	0.64
1:B:324:GLN:H	1:B:324:GLN:NE2	1.95	0.64
1:A:142:PRO:HD2	1:A:159:ARG:HD3	1.78	0.64
1:B:321:GLY:HA3	1:B:398:ASN:O	1.98	0.64
1:B:452:ASP:O	1:B:456:GLN:HG3	1.98	0.64
1:A:349:ASN:ND2	1:A:362:LEU:H	1.96	0.64
1:A:64:PRO:HA	2:A:600:FAD:N5	2.12	0.64
1:A:91:ALA:HB3	1:A:350:LYS:O	1.98	0.63
1:A:251:TYR:HE1	1:B:44:PRO:HB3	1.63	0.63
1:A:455:ASP:OD2	1:A:455:ASP:N	2.29	0.63
1:B:320:GLU:C	1:B:322:SER:H	2.04	0.63
1:B:446:GLU:H	1:B:456:GLN:NE2	1.90	0.63

Continued on next page...

Continued from previous page...

Atom-1	Atom-2	Interatomic distance (Å)	Clash overlap (Å)
1:B:35:LEU:HD23	1:B:36:GLU:N	2.13	0.63
1:A:165:VAL:O	1:A:170:GLU:HB3	1.97	0.63
1:B:7:HIS:HD2	1:B:36:GLU:O	1.81	0.63
1:A:349:ASN:ND2	1:A:362:LEU:HB3	2.14	0.63
1:A:7:HIS:HD2	1:A:36:GLU:O	1.82	0.63
1:A:64:PRO:HA	2:A:600:FAD:C4X	2.29	0.63
1:A:157:ARG:NH2	1:A:182:ASP:OD1	2.27	0.63
1:A:35:LEU:HD23	1:A:36:GLU:N	2.13	0.63
1:B:466:THR:HA	1:B:470:SER:HB2	1.81	0.63
1:A:409:TRP:CE2	2:A:600:FAD:C7M	2.82	0.62
1:A:255:LYS:HB2	2:A:600:FAD:N6A	2.14	0.62
1:A:455:ASP:HA	1:A:458:LYS:HB2	1.81	0.62
1:B:249:LYS:HB3	1:B:251:TYR:CE2	2.34	0.62
1:B:168:LEU:C	1:B:171:PRO:HD2	2.24	0.62
1:B:349:ASN:ND2	1:B:362:LEU:H	1.97	0.62
1:B:455:ASP:HA	1:B:458:LYS:HB2	1.81	0.62
1:B:247:LEU:H	1:B:247:LEU:CD1	2.08	0.62
1:B:87:LEU:HD13	1:B:228:GLN:HE22	1.64	0.62
1:A:157:ARG:HG2	1:A:162:ASP:OD1	2.00	0.62
1:A:168:LEU:C	1:A:171:PRO:HD2	2.24	0.62
1:B:249:LYS:HD3	1:B:251:TYR:OH	1.99	0.61
1:A:321:GLY:HA3	1:A:398:ASN:O	1.99	0.61
1:B:349:ASN:ND2	1:B:362:LEU:HB3	2.15	0.61
1:A:87:LEU:HD22	1:A:228:GLN:HE21	1.64	0.61
1:A:380:ASP:O	1:A:384:ILE:HG13	2.00	0.61
1:B:346:THR:HG23	1:B:364:ARG:HB3	1.83	0.61
1:A:70:ARG:HG2	1:A:70:ARG:NH1	2.16	0.60
1:A:62:ARG:HH21	1:A:407:THR:HB	1.66	0.59
1:B:408:ARG:HG2	1:B:408:ARG:HH11	1.68	0.59
1:B:39:LEU:C	1:B:39:LEU:HD23	2.28	0.59
1:B:157:ARG:HG2	1:B:162:ASP:OD1	2.01	0.59
1:A:349:ASN:HD21	1:A:362:LEU:CB	2.16	0.59
1:A:55:LYS:O	1:A:58:TYR:HB2	2.02	0.59
1:A:346:THR:HG23	1:A:364:ARG:HB3	1.84	0.59
1:B:52:THR:HB	1:B:235:GLN:HB3	1.83	0.59
1:B:90:ASN:HD21	1:B:226:GLN:N	2.00	0.59
1:A:35:LEU:HD23	1:A:36:GLU:H	1.68	0.59
1:A:87:LEU:HD22	1:A:228:GLN:NE2	2.18	0.58
1:A:23:TYR:CE2	1:A:458:LYS:HE3	2.38	0.58
1:A:274:VAL:HG21	1:B:45:ARG:HB3	1.85	0.58
1:B:35:LEU:HD23	1:B:36:GLU:H	1.68	0.58

Continued on next page...

Continued from previous page...

Atom-1	Atom-2	Interatomic distance (Å)	Clash overlap (Å)
1:A:39:LEU:C	1:A:39:LEU:HD23	2.29	0.58
1:B:446:GLU:N	1:B:456:GLN:HE22	1.94	0.58
1:B:104:HIS:C	1:B:105:PRO:O	2.41	0.58
1:B:455:ASP:OD2	1:B:455:ASP:N	2.25	0.58
1:A:24:MET:CG	1:A:37:LEU:HD13	2.33	0.57
1:A:251:TYR:CE1	1:B:44:PRO:HB3	2.39	0.57
1:A:452:ASP:O	1:A:456:GLN:HG3	2.03	0.57
1:B:91:ALA:HB3	1:B:350:LYS:O	2.04	0.57
1:B:153:GLY:O	1:B:157:ARG:HB2	2.03	0.57
1:B:382:ASP:O	1:B:386:ILE:HG13	2.04	0.57
1:B:53:VAL:CG1	1:B:62:ARG:HD2	2.34	0.57
1:B:55:LYS:O	1:B:58:TYR:HB2	2.04	0.57
1:B:349:ASN:HD21	1:B:362:LEU:CB	2.17	0.57
1:B:24:MET:CG	1:B:37:LEU:HD13	2.35	0.56
1:B:380:ASP:O	1:B:384:ILE:HG13	2.05	0.56
1:A:176:ILE:HG13	1:A:177:TYR:CD2	2.40	0.56
1:A:408:ARG:HG2	1:A:408:ARG:HH11	1.70	0.56
1:B:47:GLY:CA	1:B:238:VAL:HG11	2.36	0.56
1:B:240:GLU:HA	1:B:240:GLU:OE1	2.05	0.56
1:B:232:THR:CB	1:B:236:THR:HG21	2.34	0.56
1:B:176:ILE:HG13	1:B:177:TYR:CD2	2.40	0.56
1:A:324:GLN:H	1:A:324:GLN:HE21	1.53	0.56
1:B:324:GLN:H	1:B:324:GLN:HE21	1.53	0.56
1:A:47:GLY:CA	1:A:238:VAL:HG11	2.36	0.56
1:A:149:ASP:OD2	1:A:418:VAL:HA	2.05	0.56
1:B:52:THR:HG21	1:B:233:GLY:HA3	1.87	0.56
1:B:30:GLU:O	1:B:31:LYS:HD2	2.06	0.55
1:A:52:THR:HB	1:A:235:GLN:HB3	1.87	0.55
1:A:106:MET:HE1	1:A:172:LEU:HD21	1.88	0.55
1:A:87:LEU:HD13	1:A:228:GLN:NE2	2.21	0.55
1:B:229:THR:CG2	1:B:230:LEU:H	2.16	0.55
1:A:320:GLU:C	1:A:322:SER:N	2.64	0.55
1:A:240:GLU:OE1	1:A:240:GLU:HA	2.07	0.55
1:B:47:GLY:HA3	1:B:238:VAL:HG11	1.89	0.55
1:A:325:MET:HB3	1:A:395:MET:HB3	1.89	0.55
1:A:30:GLU:O	1:A:31:LYS:HD2	2.08	0.54
1:B:70:ARG:HG2	1:B:70:ARG:NH1	2.20	0.54
1:B:130:SER:C	1:B:132:LYS:H	2.14	0.54
1:A:153:GLY:O	1:A:157:ARG:HB2	2.07	0.54
1:A:308:SER:HA	1:A:413:MET:O	2.07	0.54
1:A:446:GLU:N	1:A:456:GLN:HE22	1.96	0.54

Continued on next page...

Continued from previous page...

Atom-1	Atom-2	Interatomic distance (Å)	Clash overlap (Å)
1:A:349:ASN:HD21	1:A:362:LEU:N	2.05	0.54
1:B:106:MET:CG	1:B:106:MET:O	2.55	0.54
1:B:403:MET:C	1:B:403:MET:SD	2.91	0.54
1:A:232:THR:CB	1:A:236:THR:HG21	2.34	0.54
1:A:403:MET:SD	1:A:403:MET:C	2.91	0.54
1:A:53:VAL:CG1	1:A:62:ARG:HD2	2.39	0.53
1:B:308:SER:HA	1:B:413:MET:O	2.07	0.53
1:A:88:VAL:O	1:A:352:TRP:HZ3	1.92	0.53
1:A:259:LEU:HB3	1:A:294:LEU:HD13	1.91	0.53
1:B:74:ALA:HB2	1:B:451:PRO:HG3	1.90	0.53
1:B:325:MET:HB3	1:B:395:MET:HB3	1.90	0.53
1:A:412:SER:O	1:A:414:PRO:HD3	2.08	0.53
1:B:259:LEU:HB3	1:B:294:LEU:HD13	1.90	0.53
1:A:382:ASP:O	1:A:386:ILE:HG13	2.09	0.53
1:A:168:LEU:O	1:A:171:PRO:HD2	2.09	0.52
1:A:233:GLY:O	1:A:236:THR:HG23	2.10	0.52
1:A:240:GLU:O	1:A:244:GLN:HG3	2.10	0.52
1:B:62:ARG:NH2	1:B:407:THR:HB	2.25	0.52
1:A:74:ALA:HB2	1:A:451:PRO:HG3	1.91	0.52
1:A:170:GLU:CD	1:A:336:ARG:HD3	2.35	0.52
1:B:64:PRO:HA	2:B:700:FAD:N5	2.25	0.52
1:B:168:LEU:O	1:B:171:PRO:HD2	2.10	0.52
1:B:233:GLY:O	1:B:236:THR:HG23	2.10	0.52
1:A:86:LEU:O	1:A:88:VAL:HG13	2.10	0.51
1:B:240:GLU:O	1:B:244:GLN:HG3	2.09	0.51
1:A:149:ASP:OD2	1:A:419:GLY:N	2.37	0.51
1:B:64:PRO:HA	2:B:700:FAD:C4X	2.41	0.51
1:B:132:LYS:NZ	1:B:132:LYS:HB3	2.26	0.51
1:B:140:ILE:HG22	1:B:141:LEU:CD2	2.41	0.51
1:B:320:GLU:C	1:B:322:SER:N	2.64	0.51
1:A:8:VAL:HG11	1:A:24:MET:CE	2.41	0.51
1:A:229:THR:CG2	1:A:230:LEU:H	2.14	0.51
1:A:457:GLY:O	1:A:461:VAL:HG23	2.11	0.51
1:A:334:ILE:HD12	1:A:334:ILE:N	2.26	0.50
1:A:409:TRP:NE1	2:A:600:FAD:HM72	2.24	0.50
1:B:349:ASN:HD21	1:B:362:LEU:N	2.07	0.50
1:B:457:GLY:O	1:B:461:VAL:HG23	2.11	0.50
1:A:52:THR:HG21	1:A:233:GLY:HA3	1.94	0.50
1:A:140:ILE:HG22	1:A:141:LEU:CD2	2.41	0.50
1:A:251:TYR:CE1	1:B:44:PRO:HD3	2.47	0.50
1:B:259:LEU:HB3	1:B:294:LEU:CD1	2.42	0.50

Continued on next page...

Continued from previous page...

Atom-1	Atom-2	Interatomic distance (Å)	Clash overlap (Å)
1:A:346:THR:CG2	1:A:364:ARG:HB3	2.42	0.50
1:B:8:VAL:CG2	1:B:468:LEU:HD11	2.42	0.50
1:A:79:LYS:O	1:A:82:GLY:N	2.37	0.50
1:B:87:LEU:HD13	1:B:228:GLN:NE2	2.26	0.49
1:B:88:VAL:O	1:B:88:VAL:HG23	2.12	0.49
1:B:49:LYS:HD2	2:B:700:FAD:HM82	1.94	0.49
1:A:74:ALA:HB3	1:A:75:PRO:CD	2.42	0.49
1:A:326:GLU:CG	1:A:327:HIS:H	2.18	0.49
1:B:7:HIS:NE2	1:B:38:THR:HG23	2.26	0.49
1:B:326:GLU:CG	1:B:327:HIS:H	2.17	0.49
1:A:88:VAL:O	1:A:88:VAL:HG23	2.13	0.49
1:B:406:VAL:HG12	1:B:407:THR:N	2.27	0.49
1:A:409:TRP:NE1	2:A:600:FAD:C7M	2.76	0.49
1:B:74:ALA:HB3	1:B:75:PRO:CD	2.42	0.49
1:B:68:LEU:HD21	1:B:70:ARG:NH1	2.28	0.49
1:B:86:LEU:O	1:B:88:VAL:HG13	2.12	0.49
1:A:255:LYS:HB2	2:A:600:FAD:C6A	2.43	0.48
1:A:259:LEU:HB3	1:A:294:LEU:CD1	2.43	0.48
1:B:346:THR:CG2	1:B:364:ARG:HB3	2.43	0.48
1:B:52:THR:HB	1:B:235:GLN:CB	2.43	0.48
1:A:424:ILE:O	1:A:428:ARG:HD3	2.14	0.48
1:B:53:VAL:HG13	1:B:62:ARG:HD2	1.95	0.48
1:B:330:THR:CG2	1:B:351:LYS:HD2	2.42	0.48
1:A:349:ASN:CG	1:A:362:LEU:H	2.21	0.48
1:B:8:VAL:HG11	1:B:24:MET:CE	2.43	0.48
1:B:37:LEU:HD23	1:B:37:LEU:O	2.13	0.48
1:B:187:MET:HE3	1:B:421:LYS:HE3	1.94	0.48
1:A:68:LEU:HD21	1:A:70:ARG:NH1	2.28	0.48
1:B:412:SER:O	1:B:414:PRO:HD3	2.14	0.48
1:B:11:ILE:HD12	1:B:293:MET:HE1	1.95	0.48
1:B:334:ILE:N	1:B:334:ILE:HD12	2.28	0.48
1:A:88:VAL:HG21	1:A:354:HIS:CD2	2.48	0.47
1:A:384:ILE:CD1	1:A:404:THR:HG21	2.38	0.47
1:A:170:GLU:OE2	1:A:336:ARG:HD3	2.14	0.47
1:A:7:HIS:NE2	1:A:38:THR:HG23	2.30	0.47
1:A:98:LEU:HD21	1:A:340:PHE:CZ	2.48	0.47
1:B:53:VAL:HG11	1:B:62:ARG:HD2	1.96	0.47
1:A:18:LEU:CD1	1:A:238:VAL:HG13	2.45	0.47
1:A:330:THR:CG2	1:A:351:LYS:HD2	2.42	0.47
1:B:99:VAL:HG23	1:B:104:HIS:HD2	1.79	0.47
1:B:349:ASN:ND2	1:B:349:ASN:N	2.61	0.47

Continued on next page...

Continued from previous page...

Atom-1	Atom-2	Interatomic distance (Å)	Clash overlap (Å)
1:A:47:GLY:HA3	1:A:238:VAL:HG11	1.94	0.47
1:A:49:LYS:HD2	2:A:600:FAD:HM82	1.97	0.47
1:A:68:LEU:HD21	1:A:70:ARG:HH11	1.79	0.47
1:A:99:VAL:HG23	1:A:104:HIS:HD2	1.80	0.47
1:A:424:ILE:HD12	1:A:445:PHE:CD1	2.50	0.47
1:B:349:ASN:CG	1:B:362:LEU:H	2.23	0.47
1:B:450:ILE:HB	1:B:451:PRO:HD3	1.97	0.47
1:B:68:LEU:HD21	1:B:70:ARG:HH11	1.78	0.47
1:B:88:VAL:O	1:B:352:TRP:HZ3	1.97	0.47
1:B:98:LEU:HD21	1:B:340:PHE:CZ	2.50	0.47
1:B:384:ILE:CD1	1:B:404:THR:HG21	2.35	0.47
1:A:251:TYR:N	1:A:251:TYR:CD2	2.83	0.46
1:B:286:PRO:HD3	2:B:700:FAD:H51A	1.96	0.46
1:B:387:VAL:O	1:B:391:LEU:HB2	2.15	0.46
1:A:53:VAL:HG13	1:A:62:ARG:HD2	1.97	0.46
1:B:9:VAL:HG12	1:B:278:ALA:CB	2.45	0.46
1:B:106:MET:O	1:B:106:MET:SD	2.73	0.46
1:A:406:VAL:HG12	1:A:407:THR:N	2.30	0.46
1:A:310:SER:OG	1:A:410:HIS:O	2.28	0.46
1:B:105:PRO:O	1:B:106:MET:HB2	2.16	0.46
1:B:251:TYR:N	1:B:251:TYR:CD2	2.83	0.46
1:B:345:CYS:SG	1:B:391:LEU:HD11	2.55	0.46
1:B:431:LEU:HD21	1:B:440:MET:HE3	1.98	0.46
1:A:37:LEU:O	1:A:37:LEU:HD23	2.15	0.46
1:B:53:VAL:HG22	1:B:60:ILE:CG1	2.46	0.46
1:A:349:ASN:ND2	1:A:349:ASN:N	2.61	0.46
1:A:357:PRO:O	1:A:360:LYS:HB2	2.16	0.46
1:A:367:VAL:HG12	1:A:368:GLY:N	2.31	0.46
1:A:89:ASN:ND2	1:A:228:GLN:HG2	2.31	0.46
1:B:8:VAL:HG11	1:B:24:MET:HE1	1.97	0.46
1:B:90:ASN:HD22	1:B:90:ASN:N	1.91	0.46
1:B:424:ILE:O	1:B:428:ARG:HD3	2.16	0.46
1:A:49:LYS:HE2	1:A:412:SER:HB3	1.98	0.45
1:B:49:LYS:HE2	1:B:412:SER:HB3	1.98	0.45
1:A:358:GLU:CD	1:A:358:GLU:N	2.72	0.45
1:B:316:LEU:O	1:B:362:LEU:HD12	2.15	0.45
1:A:8:VAL:HG11	1:A:24:MET:HE1	1.98	0.45
1:B:79:LYS:O	1:B:82:GLY:N	2.37	0.45
1:B:89:ASN:N	1:B:89:ASN:HD22	2.15	0.45
1:B:90:ASN:ND2	1:B:225:GLY:HA3	2.32	0.45
1:A:65:ASP:CB	1:A:364:ARG:HH12	2.14	0.45

Continued on next page...

Continued from previous page...

Atom-1	Atom-2	Interatomic distance (Å)	Clash overlap (Å)
1:A:79:LYS:HG2	1:A:84:GLU:CD	2.41	0.45
1:A:406:VAL:C	1:A:407:THR:HG22	2.42	0.45
1:B:89:ASN:HA	1:B:227:PHE:O	2.16	0.45
1:A:90:ASN:HB3	1:A:352:TRP:CZ2	2.52	0.45
1:A:25:GLU:HG2	1:A:247:LEU:HD13	1.99	0.45
1:B:367:VAL:HG12	1:B:368:GLY:N	2.32	0.45
1:A:49:LYS:HD2	2:A:600:FAD:C8M	2.46	0.44
1:A:62:ARG:NH2	1:A:407:THR:HB	2.31	0.44
1:B:406:VAL:C	1:B:407:THR:HG22	2.42	0.44
1:A:60:ILE:CD1	1:A:405:CYS:SG	3.05	0.44
1:A:318:PHE:CZ	1:A:401:PRO:HG3	2.52	0.44
1:A:409:TRP:CZ2	2:A:600:FAD:HM72	2.51	0.44
1:A:53:VAL:HG22	1:A:60:ILE:CG1	2.48	0.44
1:A:60:ILE:HD11	1:A:405:CYS:SG	2.57	0.44
1:A:334:ILE:HG21	1:A:340:PHE:HB2	1.99	0.44
1:A:60:ILE:O	1:A:60:ILE:HG13	2.17	0.44
1:A:268:LEU:HD12	1:A:268:LEU:N	2.32	0.44
1:A:356:ALA:HA	1:A:357:PRO:HD3	1.89	0.44
1:B:90:ASN:ND2	1:B:90:ASN:N	2.55	0.44
1:B:334:ILE:HG21	1:B:340:PHE:HB2	1.98	0.44
1:A:43:SER:HB2	1:A:44:PRO:HD2	2.00	0.44
1:A:83:LEU:HD11	1:A:240:GLU:CG	2.46	0.44
1:A:450:ILE:HB	1:A:451:PRO:HD3	1.99	0.44
1:A:387:VAL:O	1:A:391:LEU:HB2	2.18	0.43
1:A:390:ASP:HA	1:A:393:LYS:HE3	2.00	0.43
1:A:402:GLU:CG	1:A:403:MET:N	2.80	0.43
1:B:349:ASN:N	1:B:349:ASN:HD22	2.15	0.43
1:A:52:THR:HB	1:A:235:GLN:CB	2.47	0.43
1:A:64:PRO:HG3	2:A:600:FAD:O2'	2.18	0.43
1:A:71:LYS:O	1:A:75:PRO:HD2	2.18	0.43
1:B:291:ALA:HB1	1:B:304:LYS:HB3	1.99	0.43
1:B:402:GLU:CG	1:B:403:MET:N	2.81	0.43
1:A:349:ASN:N	1:A:349:ASN:HD22	2.13	0.43
1:B:79:LYS:HG2	1:B:84:GLU:CD	2.42	0.43
1:B:81:LEU:HD23	1:B:237:LEU:HD12	2.00	0.43
1:A:81:LEU:HD23	1:A:237:LEU:HD12	1.99	0.43
1:A:179:GLY:HA3	1:A:415:GLN:OE1	2.18	0.43
1:B:89:ASN:ND2	1:B:228:GLN:HG2	2.33	0.43
1:B:232:THR:CG2	1:B:236:THR:HG21	2.49	0.43
1:A:69:GLU:HG3	1:A:228:GLN:OE1	2.19	0.43
1:A:318:PHE:HA	1:A:319:PRO:HD3	1.89	0.43

Continued on next page...

Continued from previous page...

Atom-1	Atom-2	Interatomic distance (Å)	Clash overlap (Å)
1:A:376:VAL:O	1:A:376:VAL:HG12	2.19	0.43
1:A:13:GLY:N	1:A:41:GLU:OE1	2.51	0.43
1:A:185:SER:HB2	1:A:418:VAL:HA	2.01	0.43
1:B:140:ILE:HG22	1:B:141:LEU:HD23	2.00	0.43
1:B:376:VAL:HG12	1:B:376:VAL:O	2.18	0.43
1:A:89:ASN:HA	1:A:227:PHE:O	2.19	0.43
1:A:180:ASP:OD1	1:A:180:ASP:C	2.61	0.43
1:B:66:SER:HB2	1:B:228:GLN:O	2.19	0.43
1:B:384:ILE:HG13	1:B:384:ILE:H	1.71	0.43
1:B:145:LYS:HE2	1:B:145:LYS:HB3	1.83	0.43
1:A:409:TRP:CE3	2:A:600:FAD:HM82	2.54	0.42
1:B:13:GLY:N	1:B:41:GLU:OE1	2.49	0.42
1:B:310:SER:OG	1:B:410:HIS:O	2.33	0.42
1:A:291:ALA:HB1	1:A:304:LYS:HB3	2.01	0.42
1:B:424:ILE:HD12	1:B:445:PHE:CD1	2.54	0.42
1:B:378:LEU:HB3	1:B:382:ASP:CB	2.49	0.42
1:A:466:THR:HA	1:A:470:SER:HB2	2.01	0.42
1:A:11:ILE:HD12	1:A:293:MET:HE1	2.01	0.42
1:A:66:SER:HB2	1:A:228:GLN:O	2.20	0.42
1:B:357:PRO:O	1:B:360:LYS:HB2	2.19	0.42
1:A:140:ILE:HG22	1:A:141:LEU:HD23	2.00	0.42
1:A:283:VAL:HG11	1:A:293:MET:HE2	2.02	0.42
1:A:378:LEU:HB3	1:A:382:ASP:CB	2.50	0.42
1:A:151:SER:HA	1:A:184:LEU:O	2.20	0.42
1:A:251:TYR:CD1	1:B:44:PRO:HD3	2.54	0.42
1:A:379:SER:O	1:A:380:ASP:C	2.62	0.42
1:B:283:VAL:HG11	1:B:293:MET:HE2	2.02	0.42
1:B:406:VAL:CG1	1:B:407:THR:N	2.83	0.42
1:A:274:VAL:HG23	1:B:45:ARG:HB3	2.01	0.42
1:A:316:LEU:O	1:A:362:LEU:HD12	2.19	0.42
1:B:43:SER:HB2	1:B:44:PRO:HD2	2.01	0.42
1:A:232:THR:CG2	1:A:236:THR:HG21	2.50	0.42
1:A:356:ALA:HB2	1:A:362:LEU:HB2	2.02	0.42
1:B:60:ILE:O	1:B:60:ILE:HG13	2.20	0.42
1:B:71:LYS:O	1:B:75:PRO:HD2	2.20	0.41
1:B:104:HIS:HA	1:B:105:PRO:HD3	1.88	0.41
1:B:318:PHE:CZ	1:B:401:PRO:HG3	2.56	0.41
1:A:272:ASN:CG	1:B:45:ARG:HD2	2.45	0.41
1:A:89:ASN:N	1:A:89:ASN:HD22	2.18	0.41
1:A:90:ASN:HD22	1:A:90:ASN:N	1.93	0.41
1:A:319:PRO:O	1:A:320:GLU:HB2	2.21	0.41

Continued on next page...

Continued from previous page...

Atom-1	Atom-2	Interatomic distance (Å)	Clash overlap (Å)
1:B:390:ASP:HA	1:B:393:LYS:HE3	2.02	0.41
1:B:88:VAL:O	1:B:88:VAL:CG2	2.68	0.41
1:B:356:ALA:HB2	1:B:362:LEU:HB2	2.03	0.41
1:B:318:PHE:HA	1:B:319:PRO:HD3	1.88	0.41
1:A:145:LYS:HB3	1:A:145:LYS:HE2	1.83	0.41
1:A:345:CYS:SG	1:A:391:LEU:HD11	2.60	0.41
1:B:268:LEU:HD12	1:B:268:LEU:N	2.35	0.41
1:B:358:GLU:CD	1:B:358:GLU:N	2.71	0.41
1:A:375:ILE:H	1:A:375:ILE:HG13	1.62	0.41
1:A:29:LYS:HE3	1:A:247:LEU:CD2	2.49	0.41
1:A:349:ASN:ND2	1:A:349:ASN:H	2.17	0.41
1:B:46:VAL:HG23	1:B:238:VAL:HG12	2.03	0.41
1:B:88:VAL:HG21	1:B:354:HIS:CD2	2.56	0.41
1:B:469:PHE:O	1:B:470:SER:C	2.63	0.41
1:A:10:ILE:O	1:A:39:LEU:HA	2.21	0.40
1:B:99:VAL:HG12	1:B:100:ASN:N	2.35	0.40
1:A:88:VAL:O	1:A:88:VAL:CG2	2.69	0.40
1:A:322:SER:O	1:A:396:ASN:O	2.40	0.40
1:A:408:ARG:HG2	1:A:408:ARG:NH1	2.37	0.40
3:A:471:ACJ:C12	3:A:471:ACJ:H6	2.50	0.40
1:B:81:LEU:HD21	1:B:241:ILE:HG13	2.03	0.40
1:B:443:ALA:HB2	2:B:700:FAD:H5'2	2.02	0.40
1:A:53:VAL:HG11	1:A:62:ARG:HD2	2.03	0.40
1:A:67:PHE:CD1	1:A:67:PHE:C	2.99	0.40
1:B:67:PHE:CD1	1:B:67:PHE:C	3.00	0.40
1:B:180:ASP:OD1	1:B:180:ASP:C	2.64	0.40
1:B:379:SER:O	1:B:380:ASP:C	2.64	0.40

All (1) symmetry-related close contacts are listed below. The label for Atom-2 includes the symmetry operator and encoded unit-cell translations to be applied.

Atom-1	Atom-2	Interatomic distance (Å)	Clash overlap (Å)
1:B:328:GLU:OE2	1:B:328:GLU:OE2[7_645]	1.91	0.29

5.3 Torsion angles

5.3.1 Protein backbone

In the following table, the Percentiles column shows the percent Ramachandran outliers of the chain as a percentile score with respect to all X-ray entries followed by that with respect to entries

of similar resolution.

The Analysed column shows the number of residues for which the backbone conformation was analysed, and the total number of residues.

Mol	Chain	Analysed	Favoured	Allowed	Outliers	Percentiles	
1	A	408/470 (87%)	358 (88%)	40 (10%)	10 (2%)	4	17
1	B	413/470 (88%)	359 (87%)	42 (10%)	12 (3%)	3	15
All	All	821/940 (87%)	717 (87%)	82 (10%)	22 (3%)	4	16

All (22) Ramachandran outliers are listed below:

Mol	Chain	Res	Type
1	A	320	GLU
1	A	324	GLN
1	B	107	PRO
1	B	320	GLU
1	B	324	GLN
1	A	323	VAL
1	B	323	VAL
1	A	30	GLU
1	A	262	SER
1	B	30	GLU
1	A	336	ARG
1	A	337	ASN
1	A	338	SER
1	B	99	VAL
1	B	262	SER
1	B	336	ARG
1	B	337	ASN
1	B	338	SER
1	A	99	VAL
1	B	108	LYS
1	A	105	PRO
1	B	105	PRO

5.3.2 Protein sidechains ⓘ

In the following table, the Percentiles column shows the percent sidechain outliers of the chain as a percentile score with respect to all X-ray entries followed by that with respect to entries of similar resolution.

The Analysed column shows the number of residues for which the sidechain conformation was analysed, and the total number of residues.

Mol	Chain	Analysed	Rotameric	Outliers	Percentiles	
1	A	344/393 (88%)	319 (93%)	25 (7%)	13	38
1	B	344/393 (88%)	319 (93%)	25 (7%)	13	38
All	All	688/786 (88%)	638 (93%)	50 (7%)	13	38

All (50) residues with a non-rotameric sidechain are listed below:

Mol	Chain	Res	Type
1	A	9	VAL
1	A	53	VAL
1	A	70	ARG
1	A	89	ASN
1	A	90	ASN
1	A	107	PRO
1	A	160	VAL
1	A	170	GLU
1	A	174	SER
1	A	187	MET
1	A	240	GLU
1	A	247	LEU
1	A	288	LYS
1	A	293	MET
1	A	294	LEU
1	A	324	GLN
1	A	330	THR
1	A	343	THR
1	A	349	ASN
1	A	361	THR
1	A	407	THR
1	A	421	LYS
1	A	422	GLN
1	A	428	ARG
1	A	455	ASP
1	B	9	VAL
1	B	53	VAL
1	B	89	ASN
1	B	90	ASN
1	B	106	MET
1	B	132	LYS
1	B	160	VAL
1	B	170	GLU
1	B	174	SER
1	B	187	MET

Continued on next page...

Continued from previous page...

Mol	Chain	Res	Type
1	B	240	GLU
1	B	247	LEU
1	B	288	LYS
1	B	293	MET
1	B	294	LEU
1	B	324	GLN
1	B	330	THR
1	B	343	THR
1	B	349	ASN
1	B	361	THR
1	B	407	THR
1	B	421	LYS
1	B	422	GLN
1	B	428	ARG
1	B	455	ASP

Sometimes sidechains can be flipped to improve hydrogen bonding and reduce clashes. All (26) such sidechains are listed below:

Mol	Chain	Res	Type
1	A	51	GLN
1	A	89	ASN
1	A	90	ASN
1	A	100	ASN
1	A	104	HIS
1	A	228	GLN
1	A	244	GLN
1	A	261	HIS
1	A	305	ASN
1	A	324	GLN
1	A	417	HIS
1	A	456	GLN
1	B	51	GLN
1	B	89	ASN
1	B	90	ASN
1	B	100	ASN
1	B	104	HIS
1	B	228	GLN
1	B	244	GLN
1	B	261	HIS
1	B	305	ASN
1	B	324	GLN
1	B	381	ASN

Continued on next page...

Continued from previous page...

Mol	Chain	Res	Type
1	B	396	ASN
1	B	410	HIS
1	B	456	GLN

5.3.3 RNA [i](#)

There are no RNA molecules in this entry.

5.4 Non-standard residues in protein, DNA, RNA chains [i](#)

There are no non-standard protein/DNA/RNA residues in this entry.

5.5 Carbohydrates [i](#)

There are no oligosaccharides in this entry.

5.6 Ligand geometry [i](#)

6 ligands are modelled in this entry.

In the following table, the Counts columns list the number of bonds (or angles) for which Mogul statistics could be retrieved, the number of bonds (or angles) that are observed in the model and the number of bonds (or angles) that are defined in the Chemical Component Dictionary. The Link column lists molecule types, if any, to which the group is linked. The Z score for a bond length (or angle) is the number of standard deviations the observed value is removed from the expected value. A bond length (or angle) with $|Z| > 2$ is considered an outlier worth inspection. RMSZ is the root-mean-square of all Z scores of the bond lengths (or angles).

Mol	Type	Chain	Res	Link	Bond lengths			Bond angles		
					Counts	RMSZ	$\# Z > 2$	Counts	RMSZ	$\# Z > 2$
4	PO4	B	472	-	4,4,4	2.20	1 (25%)	6,6,6	0.45	0
2	FAD	B	700	-	58,58,58	1.32	6 (10%)	85,89,89	1.05	5 (5%)
4	PO4	A	472	-	4,4,4	2.22	1 (25%)	6,6,6	0.38	0
2	FAD	A	600	-	58,58,58	1.32	6 (10%)	85,89,89	1.05	5 (5%)
3	ACJ	B	471	-	25,25,25	2.24	12 (48%)	34,37,37	1.11	2 (5%)
3	ACJ	A	471	-	25,25,25	2.22	12 (48%)	34,37,37	1.05	0

In the following table, the Chirals column lists the number of chiral outliers, the number of chiral centers analysed, the number of these observed in the model and the number defined in the

Chemical Component Dictionary. Similar counts are reported in the Torsion and Rings columns.
'-' means no outliers of that kind were identified.

Mol	Type	Chain	Res	Link	Chirals	Torsions	Rings
3	ACJ	B	471	-	-	2/16/18/18	0/2/2/2
3	ACJ	A	471	-	-	4/16/18/18	0/2/2/2
2	FAD	B	700	-	-	0/34/50/50	0/6/6/6
2	FAD	A	600	-	-	0/34/50/50	0/6/6/6

All (38) bond length outliers are listed below:

Mol	Chain	Res	Type	Atoms	Z	Observed(Å)	Ideal(Å)
2	A	600	FAD	C4X-N5	4.89	1.41	1.30
2	B	700	FAD	C4X-N5	4.87	1.41	1.30
3	A	471	ACJ	C14-N1	4.35	1.53	1.45
3	B	471	ACJ	C14-N1	4.35	1.53	1.45
4	B	472	PO4	P-O1	3.81	1.59	1.50
2	B	700	FAD	P-O3P	-3.57	1.55	1.59
3	B	471	ACJ	C3-C4	3.53	1.44	1.38
2	A	600	FAD	P-O3P	-3.44	1.55	1.59
3	B	471	ACJ	C3-C2	3.44	1.44	1.39
3	A	471	ACJ	C3-C4	3.43	1.44	1.38
4	A	472	PO4	P-O1	3.43	1.58	1.50
3	B	471	ACJ	C10-C14	3.42	1.48	1.41
3	A	471	ACJ	C3-C2	3.33	1.44	1.39
3	A	471	ACJ	C12-C8	3.01	1.44	1.38
3	B	471	ACJ	C12-C8	2.99	1.44	1.38
3	A	471	ACJ	C1-C2	2.94	1.55	1.49
2	A	600	FAD	C9A-C5X	2.90	1.45	1.41
2	B	700	FAD	C9A-C5X	2.86	1.45	1.41
3	A	471	ACJ	C6-C7	2.74	1.45	1.39
3	B	471	ACJ	C1-C2	2.68	1.55	1.49
3	A	471	ACJ	F1-C1	2.61	1.42	1.33
3	A	471	ACJ	C10-C14	2.61	1.46	1.41
3	A	471	ACJ	F2-C1	2.60	1.42	1.33
3	B	471	ACJ	C6-C7	2.59	1.44	1.39
2	A	600	FAD	C10-N1	2.57	1.38	1.33
3	B	471	ACJ	O1-C7	2.56	1.45	1.39
2	B	700	FAD	C10-N1	2.52	1.38	1.33
3	B	471	ACJ	F3-C1	2.48	1.41	1.33
3	B	471	ACJ	C9-C10	2.43	1.43	1.39
3	A	471	ACJ	F3-C1	2.39	1.41	1.33
2	A	600	FAD	C2A-N1A	2.39	1.38	1.33
2	B	700	FAD	C2A-N1A	2.37	1.38	1.33

Continued on next page...

Continued from previous page...

Mol	Chain	Res	Type	Atoms	Z	Observed(Å)	Ideal(Å)
3	B	471	ACJ	F1-C1	2.37	1.41	1.33
3	B	471	ACJ	F2-C1	2.30	1.41	1.33
3	A	471	ACJ	O1-C7	2.28	1.44	1.39
3	A	471	ACJ	C9-C10	2.04	1.43	1.39
2	B	700	FAD	C9A-N10	2.01	1.44	1.41
2	A	600	FAD	C9A-N10	2.00	1.44	1.41

All (12) bond angle outliers are listed below:

Mol	Chain	Res	Type	Atoms	Z	Observed(°)	Ideal(°)
2	B	700	FAD	O4B-C1B-C2B	-2.99	100.22	106.62
2	A	600	FAD	O4B-C1B-C2B	-2.98	100.24	106.62
2	B	700	FAD	C9A-C5X-N5	-2.60	119.69	122.45
2	A	600	FAD	C9A-C5X-N5	-2.59	119.70	122.45
3	B	471	ACJ	C3-C2-C1	2.57	122.97	119.57
2	A	600	FAD	O3P-PA-O1A	-2.34	103.67	110.70
2	B	700	FAD	O3P-PA-O1A	-2.33	103.68	110.70
2	A	600	FAD	C4-C4X-N5	2.15	121.18	118.21
2	B	700	FAD	C4-C4X-N5	2.14	121.16	118.21
2	A	600	FAD	C4X-C10-N10	2.13	119.53	116.48
2	B	700	FAD	C4X-C10-N10	2.12	119.52	116.48
3	B	471	ACJ	O4-N1-C14	2.05	122.54	119.03

There are no chirality outliers.

All (6) torsion outliers are listed below:

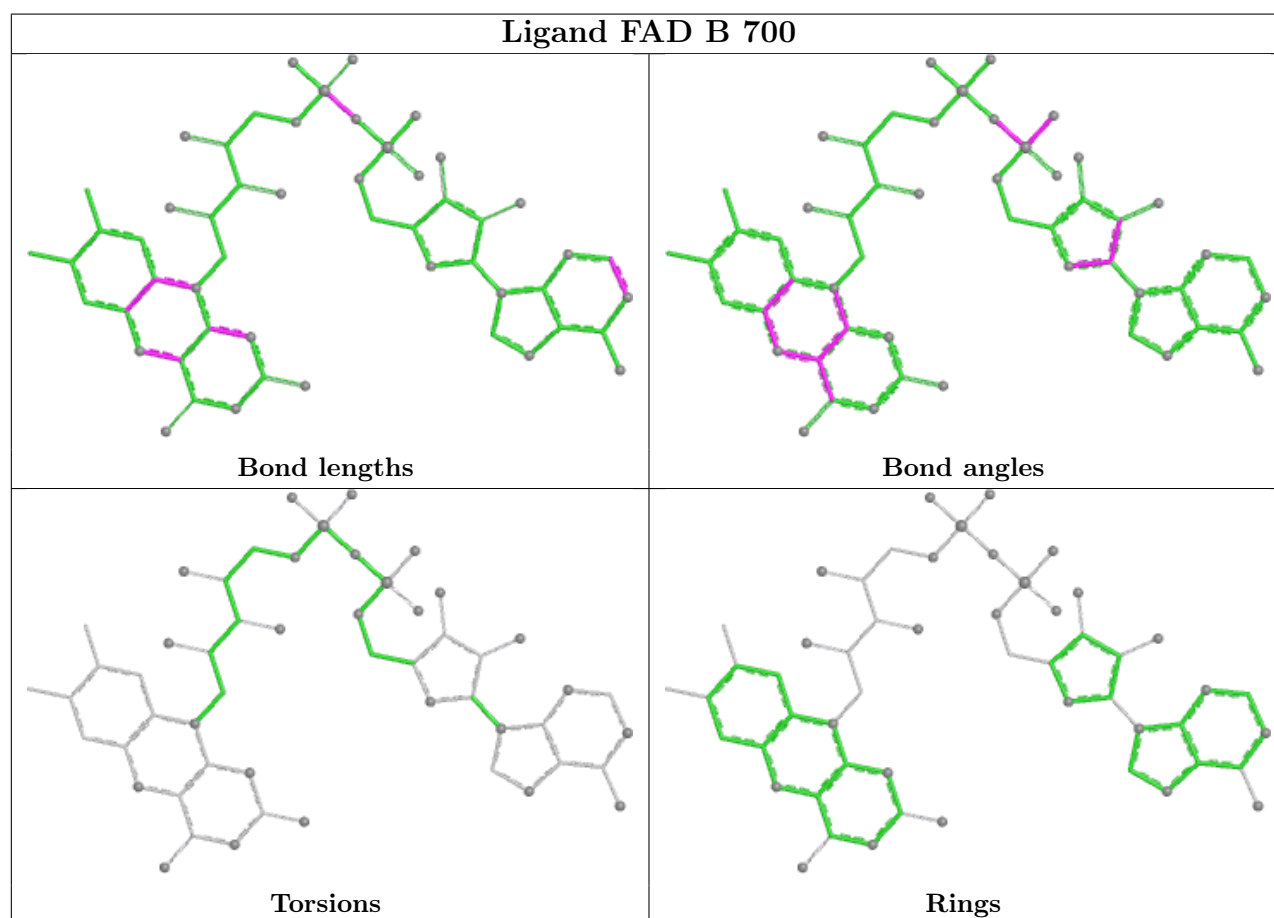
Mol	Chain	Res	Type	Atoms
3	A	471	ACJ	C14-C10-C11-O3
3	A	471	ACJ	C14-C10-C11-O2
3	B	471	ACJ	C14-C10-C11-O2
3	B	471	ACJ	C14-C10-C11-O3
3	A	471	ACJ	C9-C10-C11-O3
3	A	471	ACJ	C9-C10-C11-O2

There are no ring outliers.

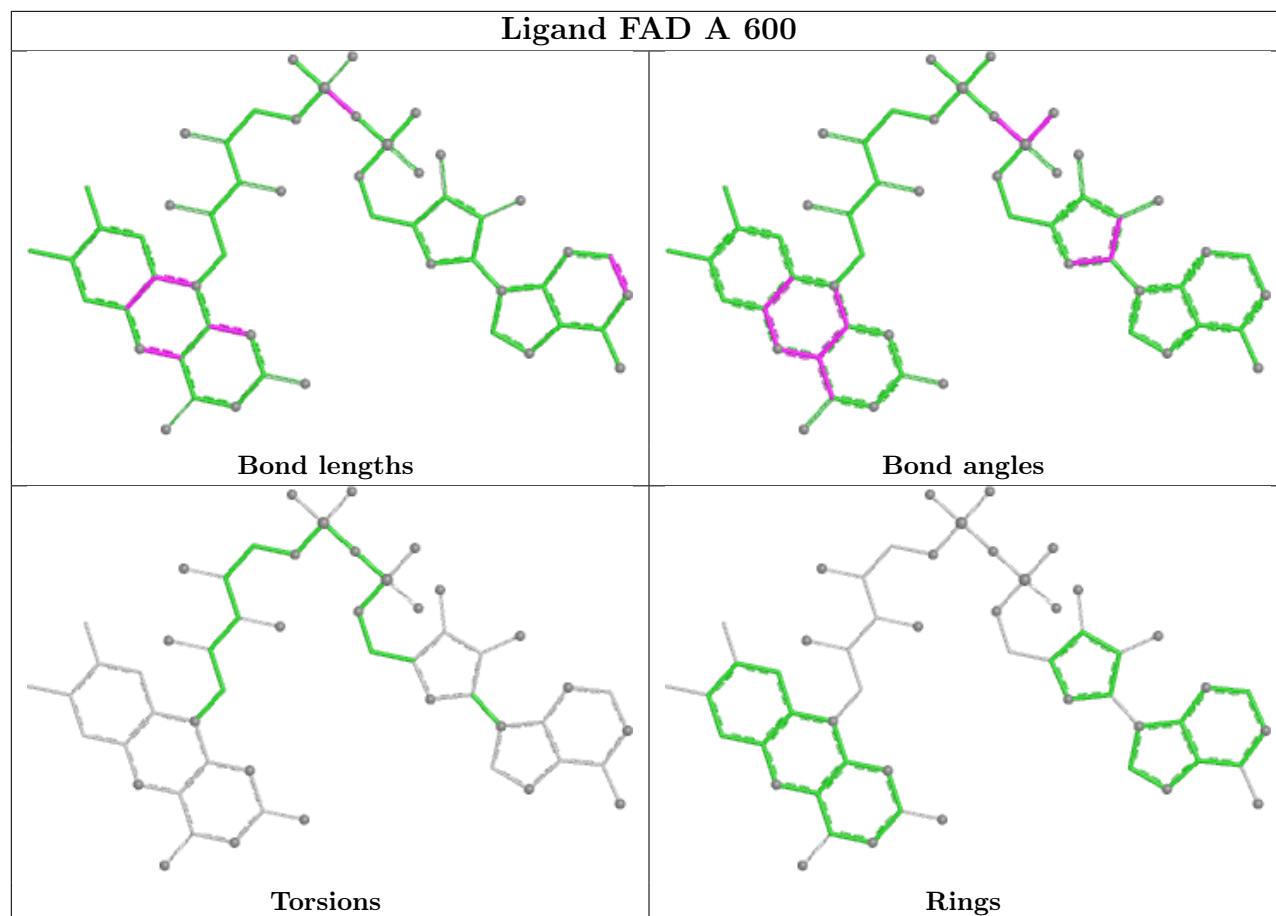
3 monomers are involved in 23 short contacts:

Mol	Chain	Res	Type	Clashes	Symm-Clashes
2	B	700	FAD	7	0
2	A	600	FAD	15	0
3	A	471	ACJ	1	0

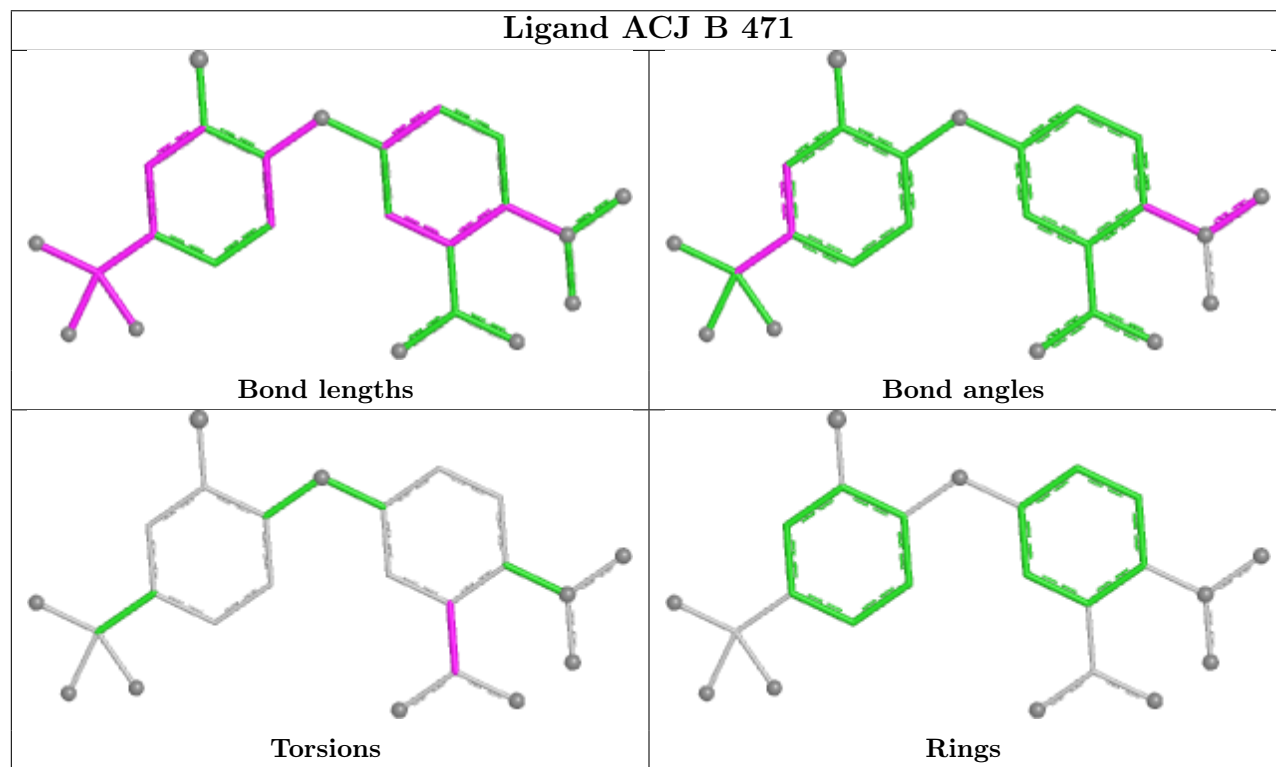
The following is a two-dimensional graphical depiction of Mogul quality analysis of bond lengths, bond angles, torsion angles, and ring geometry for all instances of the Ligand of Interest. In addition, ligands with molecular weight > 250 and outliers as shown on the validation Tables will also be included. For torsion angles, if less than 5% of the Mogul distribution of torsion angles is within 10 degrees of the torsion angle in question, then that torsion angle is considered an outlier. Any bond that is central to one or more torsion angles identified as an outlier by Mogul will be highlighted in the graph. For rings, the root-mean-square deviation (RMSD) between the ring in question and similar rings identified by Mogul is calculated over all ring torsion angles. If the average RMSD is greater than 60 degrees and the minimal RMSD between the ring in question and any Mogul-identified rings is also greater than 60 degrees, then that ring is considered an outlier. The outliers are highlighted in purple. The color gray indicates Mogul did not find sufficient equivalents in the CSD to analyse the geometry.

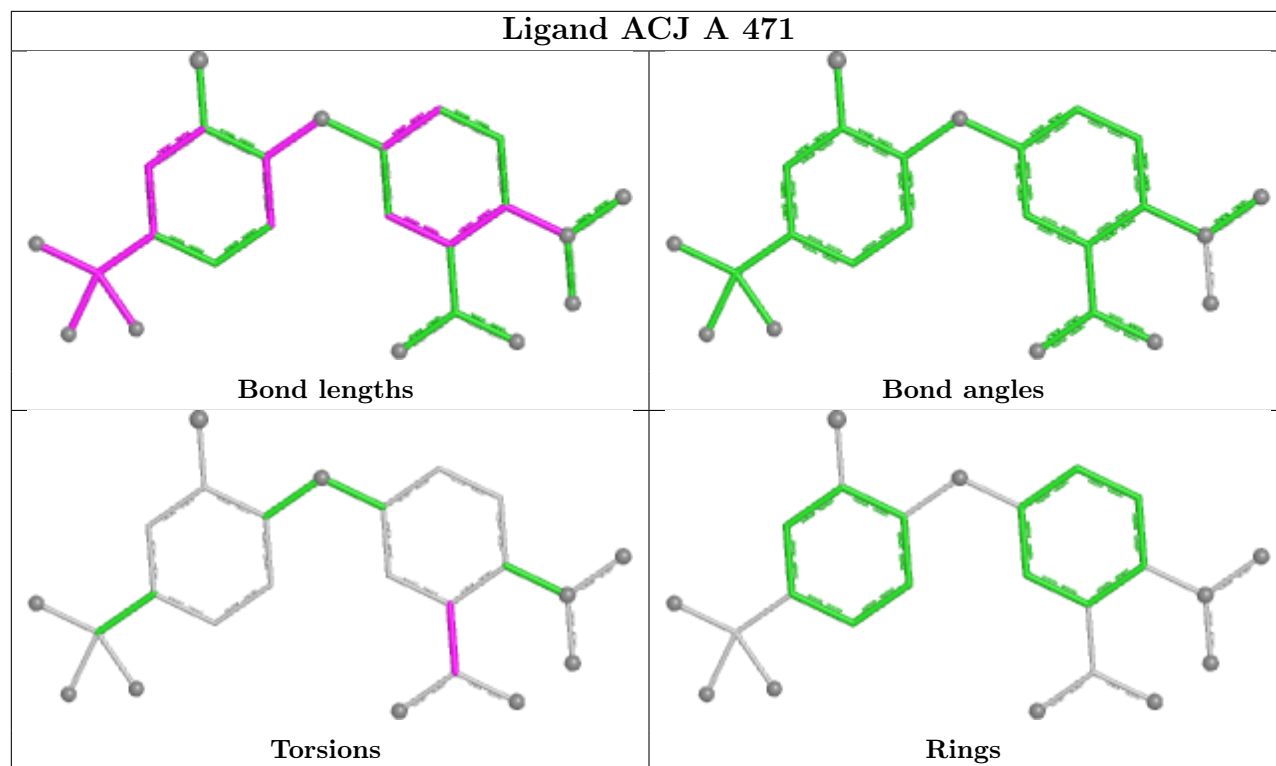


Ligand FAD A 600



Ligand ACJ B 471





5.7 Other polymers [i](#)

There are no such residues in this entry.

5.8 Polymer linkage issues [i](#)

There are no chain breaks in this entry.

6 Fit of model and data

6.1 Protein, DNA and RNA chains

In the following table, the column labelled ‘#RSRZ > 2’ contains the number (and percentage) of RSRZ outliers, followed by percent RSRZ outliers for the chain as percentile scores relative to all X-ray entries and entries of similar resolution. The OWAB column contains the minimum, median, 95th percentile and maximum values of the occupancy-weighted average B-factor per residue. The column labelled ‘Q < 0.9’ lists the number of (and percentage) of residues with an average occupancy less than 0.9.

Mol	Chain	Analysed	<RSRZ>	#RSRZ > 2		OWAB(Å ²)	Q < 0.9
1	A	414/470 (88%)	0.68	28 (6%)	23 18	44, 78, 102, 116	0
1	B	419/470 (89%)	0.78	39 (9%)	14 12	43, 80, 102, 115	0
All	All	833/940 (88%)	0.73	67 (8%)	18 15	43, 79, 102, 116	0

All (67) RSRZ outliers are listed below:

Mol	Chain	Res	Type	RSRZ
1	B	323	VAL	4.7
1	A	226	GLN	4.4
1	A	323	VAL	4.3
1	B	109	GLY	4.2
1	B	224	GLN	4.0
1	B	317	GLY	3.8
1	B	261	HIS	3.7
1	B	196	THR	3.5
1	A	375	ILE	3.4
1	A	397	ILE	3.2
1	A	99	VAL	3.1
1	B	53	VAL	3.0
1	B	315	ALA	3.0
1	B	410	HIS	3.0
1	B	130	SER	2.9
1	A	137	MET	2.9
1	B	405	CYS	2.9
1	B	354	HIS	2.9
1	B	177	TYR	2.9
1	A	262	SER	2.8
1	B	404	THR	2.8
1	B	321	GLY	2.8
1	A	229	THR	2.8
1	B	99	VAL	2.7

Continued on next page...

Continued from previous page...

Mol	Chain	Res	Type	RSRZ
1	A	264	SER	2.7
1	B	54	LYS	2.7
1	B	195	GLN	2.7
1	A	134	ARG	2.6
1	B	132	LYS	2.6
1	A	56	ASP	2.6
1	A	347	TRP	2.6
1	B	336	ARG	2.5
1	B	358	GLU	2.5
1	B	74	ALA	2.5
1	A	372	ASP	2.5
1	B	470	SER	2.5
1	B	274	VAL	2.5
1	B	347	TRP	2.5
1	A	107	PRO	2.4
1	B	108	LYS	2.4
1	A	398	ASN	2.4
1	A	325	MET	2.4
1	B	375	ILE	2.4
1	B	381	ASN	2.3
1	A	327	HIS	2.3
1	A	139	PHE	2.3
1	A	55	LYS	2.3
1	B	232	THR	2.3
1	A	274	VAL	2.2
1	B	325	MET	2.2
1	A	302	HIS	2.2
1	A	263	GLY	2.2
1	B	145	LYS	2.2
1	B	316	LEU	2.1
1	A	177	TYR	2.1
1	B	133	ALA	2.1
1	B	272	ASN	2.1
1	A	271	ASP	2.1
1	B	337	ASN	2.1
1	A	317	GLY	2.1
1	A	136	ALA	2.0
1	A	345	CYS	2.0
1	B	357	PRO	2.0
1	B	98	LEU	2.0
1	B	263	GLY	2.0
1	A	54	LYS	2.0

Continued on next page...

Continued from previous page...

Mol	Chain	Res	Type	RSRZ
1	B	137	MET	2.0

6.2 Non-standard residues in protein, DNA, RNA chains [i](#)

There are no non-standard protein/DNA/RNA residues in this entry.

6.3 Carbohydrates [i](#)

There are no oligosaccharides in this entry.

6.4 Ligands [i](#)

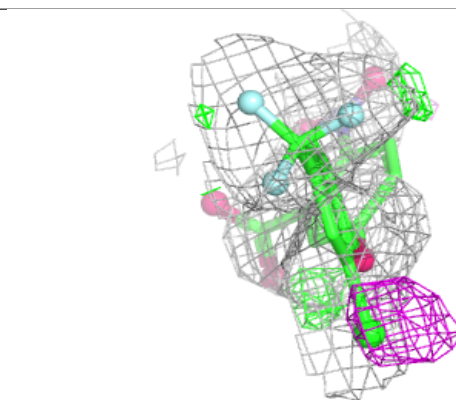
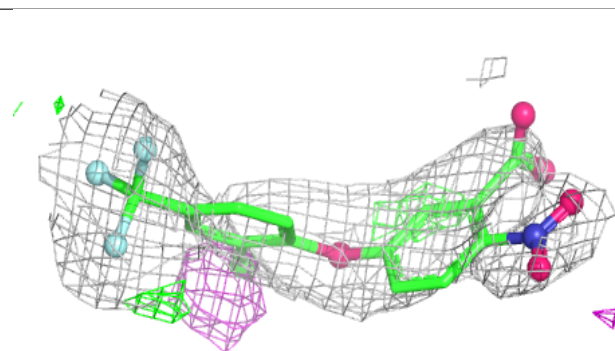
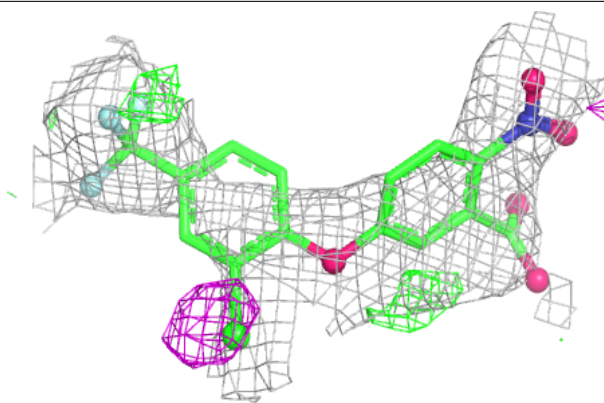
In the following table, the Atoms column lists the number of modelled atoms in the group and the number defined in the chemical component dictionary. The B-factors column lists the minimum, median, 95th percentile and maximum values of B factors of atoms in the group. The column labelled 'Q< 0.9' lists the number of atoms with occupancy less than 0.9.

Mol	Type	Chain	Res	Atoms	RSCC	RSR	B-factors(Å ²)	Q<0.9
3	ACJ	A	471	24/24	0.64	0.22	113,114,116,117	0
3	ACJ	B	471	24/24	0.67	0.21	103,106,107,108	0
4	PO4	A	472	5/5	0.80	0.16	112,113,114,114	0
2	FAD	A	600	53/53	0.87	0.16	55,68,83,83	0
2	FAD	B	700	53/53	0.88	0.17	60,67,81,81	0
4	PO4	B	472	5/5	0.88	0.18	103,104,104,105	0

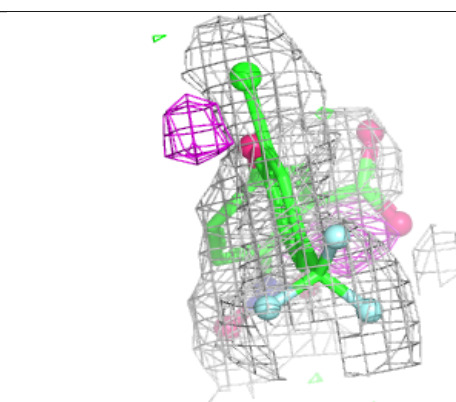
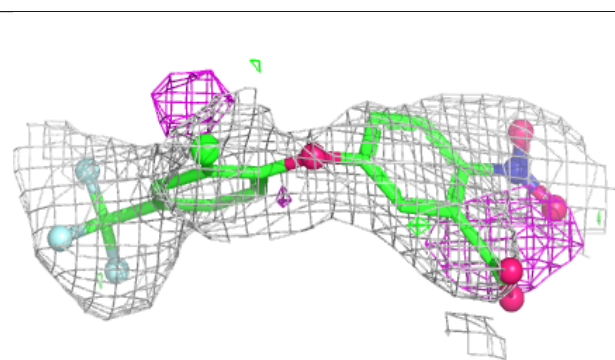
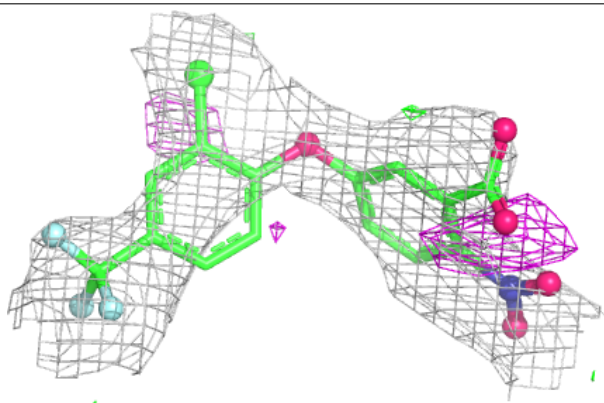
The following is a graphical depiction of the model fit to experimental electron density of all instances of the Ligand of Interest. In addition, ligands with molecular weight > 250 and outliers as shown on the geometry validation Tables will also be included. Each fit is shown from different orientation to approximate a three-dimensional view.

Electron density around ACJ A 471:

$2mF_o-DF_c$ (at 0.7 rmsd) in gray
 mF_o-DF_c (at 3 rmsd) in purple (negative)
and green (positive)

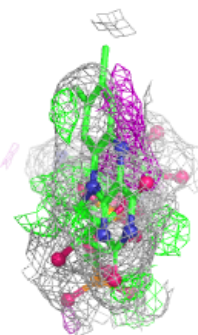
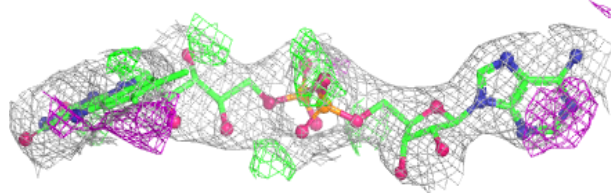
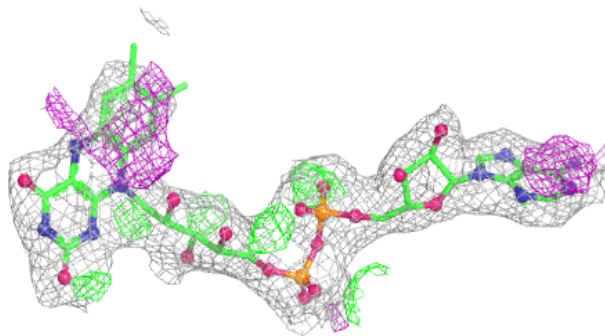
**Electron density around ACJ B 471:**

$2mF_o-DF_c$ (at 0.7 rmsd) in gray
 mF_o-DF_c (at 3 rmsd) in purple (negative)
and green (positive)

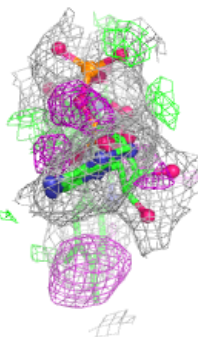
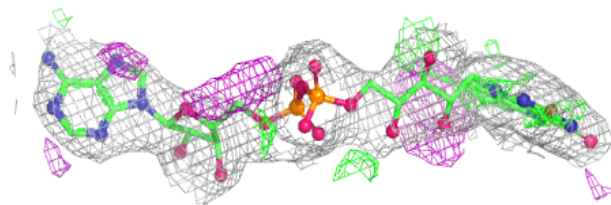
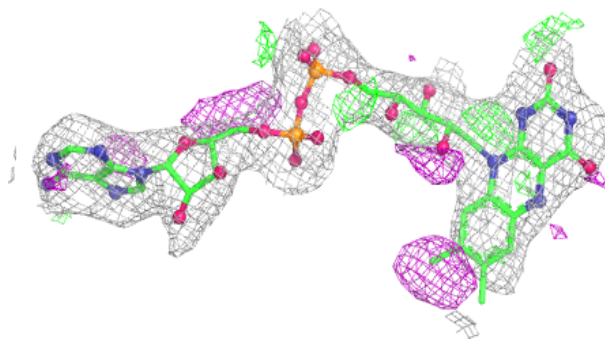


Electron density around FAD A 600:

$2mF_o-DF_c$ (at 0.7 rmsd) in gray
 mF_o-DF_c (at 3 rmsd) in purple (negative)
and green (positive)

**Electron density around FAD B 700:**

$2mF_o-DF_c$ (at 0.7 rmsd) in gray
 mF_o-DF_c (at 3 rmsd) in purple (negative)
and green (positive)



6.5 Other polymers [i](#)

There are no such residues in this entry.