



Full wwPDB X-ray Structure Validation Report ⓘ

Mar 14, 2026 – 04:54 PM UTC

PDB ID : 3IBD / pdb_00003ibd
Title : Crystal structure of a cytochrome P450 2B6 genetic variant in complex with the inhibitor 4-(4-chlorophenyl)imidazole
Authors : Gay, S.C.; Sun, L.; Talakad, J.C.; Shah, M.B.; Stout, D.C.; Halpert, J.R.
Deposited on : 2009-07-15
Resolution : 2.00 Å(reported)

This is a Full wwPDB X-ray Structure Validation Report for a publicly released PDB entry.

We welcome your comments at validation@mail.wwpdb.org

A user guide is available at

<https://www.wwpdb.org/validation/2017/XrayValidationReportHelp>

with specific help available everywhere you see the ⓘ symbol.

The types of validation reports are described at

<http://www.wwpdb.org/validation/2017/FAQs#types>.

The following versions of software and data (see [references ⓘ](#)) were used in the production of this report:

MolProbity	:	4-5-2 with Phenix2.0
Mogul	:	2022.3.0, CSD as543be (2022)
Xtriage (Phenix)	:	2.0
EDS	:	3.0
Buster-report	:	wwPDB partial adaption of 1.1.7 (2018)
Percentile statistics	:	20250101.v01 (using entries in the PDB archive January 1st 2025)
CCP4	:	9.0.010 (Gargrove)
Density-Fitness	:	1.0.12
Ideal geometry (proteins)	:	Engh & Huber (2001)
Ideal geometry (DNA, RNA)	:	Parkinson et al. (1996)
Validation Pipeline (wwPDB-VP)	:	2.49

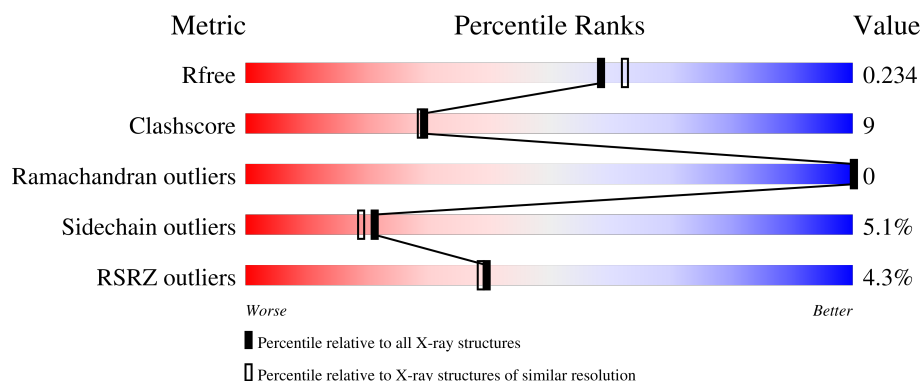
1 Overall quality at a glance

The following experimental techniques were used to determine the structure:

X-RAY DIFFRACTION


The reported resolution of this entry is 2.00 Å.

Percentile scores (ranging between 0-100) for global validation metrics of the entry are shown in the following graphic. The table shows the number of entries on which the scores are based.



Metric	Whole archive (#Entries)	Similar resolution (#Entries, resolution range(Å))
R_{free}	180053	10052 (2.00-2.00)
Clashscore	190562	11152 (2.00-2.00)
Ramachandran outliers	187476	11031 (2.00-2.00)
Sidechain outliers	187428	11029 (2.00-2.00)
RSRZ outliers	180081	10067 (2.00-2.00)

The table below summarises the geometric issues observed across the polymeric chains and their fit to the electron density. The red, orange, yellow and green segments of the lower bar indicate the fraction of residues that contain outliers for ≥ 3 , 2, 1 and 0 types of geometric quality criteria respectively. A grey segment represents the fraction of residues that are not modelled. The numeric value for each fraction is indicated below the corresponding segment, with a dot representing fractions $\leq 5\%$. The upper red bar (where present) indicates the fraction of residues that have poor fit to the electron density. The numeric value is given above the bar.

Mol	Chain	Length	Quality of chain
1	A	476	

2 Entry composition

There are 6 unique types of molecules in this entry. The entry contains 3991 atoms, of which 0 are hydrogens and 0 are deuteriums.

In the tables below, the ZeroOcc column contains the number of atoms modelled with zero occupancy, the AltConf column contains the number of residues with at least one atom in alternate conformation and the Trace column contains the number of residues modelled with at most 2 atoms.

- Molecule 1 is a protein called Cytochrome P450 2B6.

Mol	Chain	Residues	Atoms					ZeroOcc	AltConf	Trace
1	A	465	Total	C	N	O	S	0	5	0
			3726	2415	638	656	17			

There are 16 discrepancies between the modelled and reference sequences:

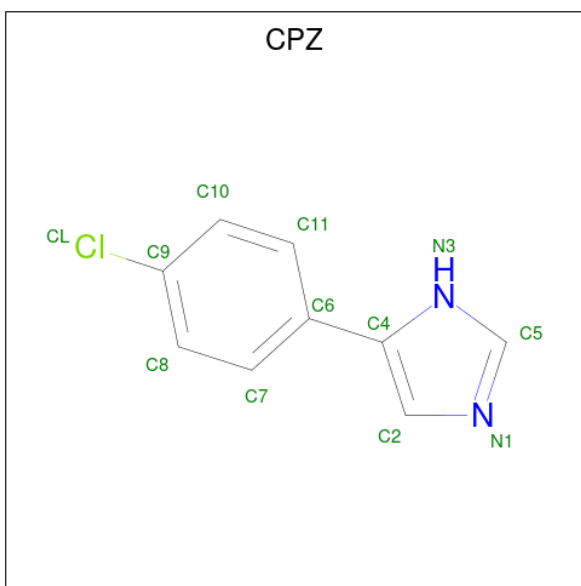
Chain	Residue	Modelled	Actual	Comment	Reference
A	1	MET	-	expression tag	UNP P20813
A	2	ALA	-	expression tag	UNP P20813
A	22	LYS	-	expression tag	UNP P20813
A	23	LYS	-	expression tag	UNP P20813
A	24	THR	-	expression tag	UNP P20813
A	25	SER	-	expression tag	UNP P20813
A	26	SER	-	expression tag	UNP P20813
A	27	LYS	-	expression tag	UNP P20813
A	28	GLY	-	expression tag	UNP P20813
A	29	LYS	-	expression tag	UNP P20813
A	226	HIS	TYR	engineered mutation	UNP P20813
A	262	ARG	LYS	engineered mutation	UNP P20813
A	492	HIS	-	expression tag	UNP P20813
A	493	HIS	-	expression tag	UNP P20813
A	494	HIS	-	expression tag	UNP P20813
A	495	HIS	-	expression tag	UNP P20813

- Molecule 2 is PROTOPORPHYRIN IX CONTAINING FE (CCD ID: HEM) (formula: $C_{34}H_{32}FeN_4O_4$).



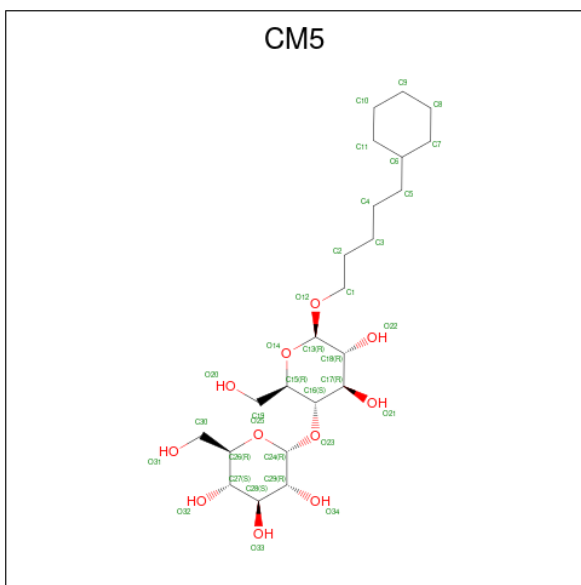
Mol	Chain	Residues	Atoms					ZeroOcc	AltConf
2	A	1	Total 43	C 34	Fe 1	N 4	O 4	0	0

- Molecule 3 is 4-(4-CHLOROPHENYL)IMIDAZOLE (CCD ID: CPZ) (formula: $\text{C}_9\text{H}_7\text{ClN}_2$).



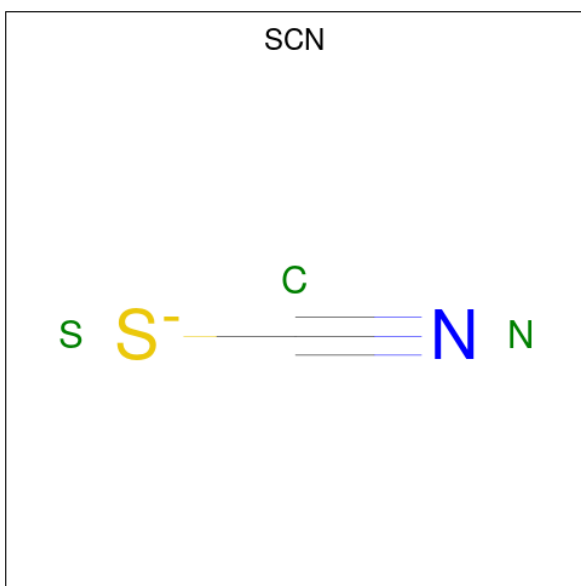
Mol	Chain	Residues	Atoms				ZeroOcc	AltConf
3	A	1	Total	C	Cl	N	0	0
			12	9	1	2		

- Molecule 4 is 5-CYCLOHEXYL-1-PENTYL-BETA-D-MALTOSE (CCD ID: CM5) (formula: $C_{23}H_{42}O_{11}$).



Mol	Chain	Residues	Atoms	ZeroOcc	AltConf
4	A	1	Total C O 12 11 1	0	0
4	A	1	Total C 10 10	0	0

- Molecule 5 is THIOCYANATE ION (CCD ID: SCN) (formula: CNS).



Mol	Chain	Residues	Atoms				ZeroOcc	AltConf
5	A	1	Total 3	C 1	N 1	S 1	0	0
5	A	1	Total 3	C 1	N 1	S 1	0	0

Continued on next page...

Continued from previous page...

Mol	Chain	Residues	Atoms				ZeroOcc	AltConf
5	A	1	Total	C	N	S	0	0
			3	1	1	1		
5	A	1	Total	C	N	S	0	0
			3	1	1	1		

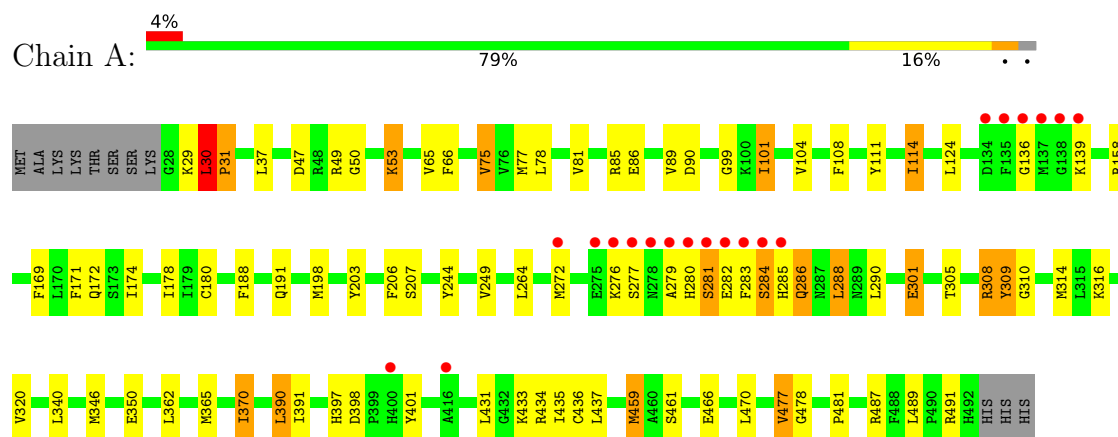
- Molecule 6 is water.

Mol	Chain	Residues	Atoms		ZeroOcc	AltConf
6	A	176	Total	O	0	0
			176	176		

3 Residue-property plots [i](#)

These plots are drawn for all protein, RNA, DNA and oligosaccharide chains in the entry. The first graphic for a chain summarises the proportions of the various outlier classes displayed in the second graphic. The second graphic shows the sequence view annotated by issues in geometry and electron density. Residues are color-coded according to the number of geometric quality criteria for which they contain at least one outlier: green = 0, yellow = 1, orange = 2 and red = 3 or more. A red dot above a residue indicates a poor fit to the electron density ($RSRZ > 2$). Stretches of 2 or more consecutive residues without any outlier are shown as a green connector. Residues present in the sample, but not in the model, are shown in grey.

- Molecule 1: Cytochrome P450 2B6



4 Data and refinement statistics

Property	Value	Source
Space group	C 1 2 1	Depositor
Cell constants a, b, c, α , β , γ	89.57Å 55.74Å 99.09Å 90.00° 96.51° 90.00°	Depositor
Resolution (Å)	98.45 – 2.00 98.45 – 2.00	Depositor EDS
% Data completeness (in resolution range)	98.1 (98.45-2.00) 98.2 (98.45-2.00)	Depositor EDS
R_{merge}	0.13	Depositor
R_{sym}	0.13	Depositor
$\langle I/\sigma(I) \rangle$ ¹	2.23 (at 2.00Å)	Xtriage
Refinement program	REFMAC	Depositor
R, R_{free}	0.178 , 0.228 0.181 , 0.234	Depositor DCC
R_{free} test set	1640 reflections (4.95%)	wwPDB-VP
Wilson B-factor (Å ²)	19.8	Xtriage
Anisotropy	0.297	Xtriage
Bulk solvent k_{sol} (e/Å ³), B_{sol} (Å ²)	0.36 , 45.9	EDS
L-test for twinning ²	$\langle L \rangle = 0.49$, $\langle L^2 \rangle = 0.32$	Xtriage
Estimated twinning fraction	No twinning to report.	Xtriage
F_o, F_c correlation	0.95	EDS
Total number of atoms	3991	wwPDB-VP
Average B, all atoms (Å ²)	21.0	wwPDB-VP

Xtriage's analysis on translational NCS is as follows: *The largest off-origin peak in the Patterson function is 6.39% of the height of the origin peak. No significant pseudotranslation is detected.*

¹Intensities estimated from amplitudes.

²Theoretical values of $\langle |L| \rangle$, $\langle L^2 \rangle$ for acentric reflections are 0.5, 0.333 respectively for untwinned datasets, and 0.375, 0.2 for perfectly twinned datasets.

5 Model quality

5.1 Standard geometry

Bond lengths and bond angles in the following residue types are not validated in this section: CPZ, HEM, CM5, SCN

The Z score for a bond length (or angle) is the number of standard deviations the observed value is removed from the expected value. A bond length (or angle) with $|Z| > 5$ is considered an outlier worth inspection. RMSZ is the root-mean-square of all Z scores of the bond lengths (or angles).

Mol	Chain	Bond lengths		Bond angles	
		RMSZ	$\# Z > 5$	RMSZ	$\# Z > 5$
1	A	1.10	11/3842 (0.3%)	1.11	14/5205 (0.3%)

All (11) bond length outliers are listed below:

Mol	Chain	Res	Type	Atoms	Z	Observed(Å)	Ideal(Å)
1	A	309	TYR	C-O	-8.34	1.14	1.24
1	A	29	LYS	C-O	-6.29	1.16	1.24
1	A	65	VAL	CA-CB	6.15	1.62	1.54
1	A	434	ARG	CZ-NH2	-5.99	1.25	1.33
1	A	397	HIS	C-O	-5.81	1.16	1.24
1	A	433	LYS	C-O	-5.66	1.17	1.24
1	A	434	ARG	CD-NE	-5.52	1.38	1.46
1	A	31	PRO	CA-C	5.51	1.54	1.51
1	A	398	ASP	C-O	-5.31	1.17	1.24
1	A	401	TYR	C-O	-5.23	1.17	1.24
1	A	308	ARG	C-O	-5.04	1.18	1.24

All (14) bond angle outliers are listed below:

Mol	Chain	Res	Type	Atoms	Z	Observed(°)	Ideal(°)
1	A	491	ARG	CG-CD-NE	-7.50	95.49	112.00
1	A	491	ARG	NE-CZ-NH2	-6.86	113.02	119.20
1	A	461	SER	CA-C-N	6.82	126.45	119.56
1	A	461	SER	C-N-CA	6.82	126.45	119.56
1	A	281	SER	N-CA-C	-6.64	96.65	110.80
1	A	50	GLY	N-CA-C	6.05	118.16	110.96
1	A	434	ARG	NE-CZ-NH2	-5.88	113.91	119.20
1	A	108	PHE	N-CA-C	5.82	117.70	111.36
1	A	301	GLU	N-CA-C	5.55	118.17	111.40
1	A	30	LEU	N-CA-C	5.45	116.75	109.83

Continued on next page...

Continued from previous page...

Mol	Chain	Res	Type	Atoms	Z	Observed(°)	Ideal(°)
1	A	491	ARG	CD-NE-CZ	5.39	131.94	124.40
1	A	114	ILE	CB-CA-C	-5.24	105.07	112.14
1	A	37	LEU	CA-C-N	5.07	126.18	119.84
1	A	37	LEU	C-N-CA	5.07	126.18	119.84

There are no chirality outliers.

There are no planarity outliers.

5.2 Too-close contacts

In the following table, the Non-H and H(model) columns list the number of non-hydrogen atoms and hydrogen atoms in the chain respectively. The H(added) column lists the number of hydrogen atoms added and optimized by MolProbity. The Clashes column lists the number of clashes within the asymmetric unit, whereas Symm-Clashes lists symmetry-related clashes.

Mol	Chain	Non-H	H(model)	H(added)	Clashes	Symm-Clashes
1	A	3726	0	3683	65	0
2	A	43	0	30	1	0
3	A	12	0	7	0	0
4	A	22	0	38	3	0
5	A	12	0	0	0	0
6	A	176	0	0	5	0
All	All	3991	0	3758	65	0

The all-atom clashscore is defined as the number of clashes found per 1000 atoms (including hydrogen atoms). The all-atom clashscore for this structure is 9.

All (65) close contacts within the same asymmetric unit are listed below, sorted by their clash magnitude.

Atom-1	Atom-2	Interatomic distance (Å)	Clash overlap (Å)
1:A:136:GLY:HA2	1:A:139:LYS:O	1.48	1.10
1:A:277:SER:HB3	6:A:610:HOH:O	1.50	1.07
1:A:280:HIS:O	1:A:281:SER:C	2.13	0.89
1:A:280:HIS:C	1:A:282:GLU:N	2.32	0.84
1:A:30:LEU:HD13	1:A:31:PRO:HD2	1.59	0.84
1:A:198:MET:HG3	4:A:1001:CM5:H42	1.61	0.81
1:A:136:GLY:CA	1:A:139:LYS:O	2.29	0.80
1:A:85:ARG:O	1:A:89:VAL:HG22	1.89	0.73
1:A:206:PHE:CD2	1:A:301:GLU:HG3	2.26	0.71
1:A:206:PHE:CE2	1:A:301:GLU:HG3	2.25	0.71

Continued on next page...

Continued from previous page...

Atom-1	Atom-2	Interatomic distance (Å)	Clash overlap (Å)
1:A:30:LEU:HD13	1:A:31:PRO:CD	2.20	0.70
1:A:53:LYS:NZ	6:A:652:HOH:O	2.25	0.69
1:A:283:PHE:O	1:A:286:GLN:HB2	1.92	0.69
1:A:282:GLU:HG2	1:A:284:SER:H	1.57	0.68
1:A:75:VAL:HG22	1:A:77:MET:HE2	1.76	0.67
1:A:114:ILE:HG13	6:A:645:HOH:O	1.95	0.66
1:A:314:MET:HB2	1:A:459:MET:HE1	1.76	0.66
1:A:81:VAL:HG23	6:A:598:HOH:O	1.96	0.65
1:A:47:ASP:OD1	1:A:49:ARG:HG2	1.98	0.64
1:A:272:MET:O	1:A:276:LYS:HB2	1.98	0.64
1:A:280:HIS:O	1:A:282:GLU:N	2.28	0.64
1:A:346:MET:O	1:A:350:GLU:HG3	2.02	0.60
1:A:310:GLY:O	1:A:314:MET:HG2	2.01	0.60
1:A:47:ASP:OD2	1:A:53:LYS:HD2	2.04	0.58
1:A:282:GLU:HG2	1:A:284:SER:N	2.20	0.56
1:A:249:VAL:HG11	1:A:288:LEU:HD13	1.86	0.56
1:A:477:VAL:CG2	1:A:478:GLY:N	2.68	0.56
1:A:477:VAL:HG23	1:A:478:GLY:N	2.20	0.56
1:A:49:ARG:HD2	1:A:53:LYS:HG3	1.90	0.54
1:A:101:ILE:HG13	1:A:104:VAL:HG22	1.88	0.53
1:A:244:TYR:CD1	4:A:1001:CM5:H12	2.46	0.51
1:A:101:ILE:HD12	6:A:605:HOH:O	2.09	0.51
1:A:466:GLU:H	1:A:466:GLU:CD	2.19	0.51
1:A:86:GLU:O	1:A:90:ASP:HB2	2.11	0.50
1:A:75:VAL:HG22	1:A:77:MET:CE	2.40	0.50
1:A:365:MET:HG2	1:A:391:ILE:HD12	1.94	0.50
1:A:99:GLY:HA2	1:A:370:ILE:HG23	1.94	0.49
1:A:188:PHE:CE2	4:A:1001:CM5:H31A	2.48	0.49
1:A:314:MET:HE1	1:A:320:VAL:CG1	2.44	0.48
1:A:66:PHE:CE2	1:A:77:MET:HG3	2.48	0.47
1:A:314:MET:CB	1:A:459:MET:HE1	2.41	0.47
1:A:316:LYS:HD3	1:A:470:LEU:HD11	1.98	0.46
1:A:180[B]:CYS:SG	1:A:188:PHE:HE1	2.39	0.46
1:A:85:ARG:HG2	1:A:431:LEU:CD1	2.47	0.46
1:A:136:GLY:C	1:A:139:LYS:O	2.59	0.45
1:A:435:ILE:O	1:A:436:CYS:C	2.58	0.45
1:A:169:PHE:CD2	1:A:169:PHE:N	2.75	0.45
1:A:114:ILE:HA	2:A:500:HEM:HAD1	1.97	0.45
1:A:30:LEU:HD22	1:A:30:LEU:HA	1.76	0.43
1:A:78:LEU:HD12	1:A:390:LEU:CD1	2.48	0.43
1:A:314:MET:HA	1:A:314:MET:HE2	2.00	0.43

Continued on next page...

Continued from previous page...

Atom-1	Atom-2	Interatomic distance (Å)	Clash overlap (Å)
1:A:203:TYR:HE1	1:A:308:ARG:HH22	1.67	0.43
1:A:75:VAL:CG2	1:A:77:MET:CE	2.97	0.43
1:A:124:LEU:HD12	1:A:124:LEU:HA	1.86	0.42
1:A:171:PHE:HD2	1:A:308:ARG:HG2	1.85	0.42
1:A:279:ALA:HB1	1:A:282:GLU:OE1	2.20	0.42
1:A:249:VAL:CG1	1:A:288:LEU:HD13	2.50	0.41
1:A:111:TYR:HB2	1:A:290:LEU:HD13	2.02	0.41
1:A:136:GLY:O	1:A:139:LYS:O	2.38	0.41
1:A:272:MET:HE3	1:A:272:MET:HB2	1.90	0.41
1:A:305:THR:HG23	1:A:481:PRO:HD3	2.02	0.41
1:A:459:MET:HB2	1:A:459:MET:HE2	1.53	0.41
1:A:172:GLN:NE2	1:A:203:TYR:CD1	2.89	0.41
1:A:487:ARG:CZ	1:A:489:LEU:HD21	2.51	0.40
1:A:174:ILE:O	1:A:178:ILE:HG12	2.22	0.40

There are no symmetry-related clashes.

5.3 Torsion angles [i](#)

5.3.1 Protein backbone [i](#)

In the following table, the Percentiles column shows the percent Ramachandran outliers of the chain as a percentile score with respect to all X-ray entries followed by that with respect to entries of similar resolution.

The Analysed column shows the number of residues for which the backbone conformation was analysed, and the total number of residues.

Mol	Chain	Analysed	Favoured	Allowed	Outliers	Percentiles	
1	A	468/476 (98%)	461 (98%)	7 (2%)	0	100	100

There are no Ramachandran outliers to report.

5.3.2 Protein sidechains [i](#)

In the following table, the Percentiles column shows the percent sidechain outliers of the chain as a percentile score with respect to all X-ray entries followed by that with respect to entries of similar resolution.

The Analysed column shows the number of residues for which the sidechain conformation was analysed, and the total number of residues.

Mol	Chain	Analysed	Rotameric	Outliers	Percentiles	
1	A	398/418 (95%)	378 (95%)	20 (5%)	22	20

All (20) residues with a non-rotameric sidechain are listed below:

Mol	Chain	Res	Type
1	A	30	LEU
1	A	53	LYS
1	A	75	VAL
1	A	101	ILE
1	A	158	ARG
1	A	191	GLN
1	A	207	SER
1	A	264	LEU
1	A	284	SER
1	A	285	HIS
1	A	286	GLN
1	A	288	LEU
1	A	309	TYR
1	A	340	LEU
1	A	362	LEU
1	A	370	ILE
1	A	390	LEU
1	A	437	LEU
1	A	459	MET
1	A	477	VAL

Sometimes sidechains can be flipped to improve hydrogen bonding and reduce clashes. All (4) such sidechains are listed below:

Mol	Chain	Res	Type
1	A	233	GLN
1	A	286	GLN
1	A	400	HIS
1	A	473	GLN

5.3.3 RNA ⓘ

There are no RNA molecules in this entry.

5.4 Non-standard residues in protein, DNA, RNA chains ⓘ

There are no non-standard protein/DNA/RNA residues in this entry.

5.5 Carbohydrates [i](#)

There are no oligosaccharides in this entry.

5.6 Ligand geometry [i](#)

8 ligands are modelled in this entry.

In the following table, the Counts columns list the number of bonds (or angles) for which Mogul statistics could be retrieved, the number of bonds (or angles) that are observed in the model and the number of bonds (or angles) that are defined in the Chemical Component Dictionary. The Link column lists molecule types, if any, to which the group is linked. The Z score for a bond length (or angle) is the number of standard deviations the observed value is removed from the expected value. A bond length (or angle) with $|Z| > 2$ is considered an outlier worth inspection. RMSZ is the root-mean-square of all Z scores of the bond lengths (or angles).

Mol	Type	Chain	Res	Link	Bond lengths			Bond angles		
					Counts	RMSZ	# Z > 2	Counts	RMSZ	# Z > 2
4	CM5	A	1001	-	12,12,36	1.30	0	13,13,49	1.46	3 (23%)
5	SCN	A	1003	-	1,2,2	0.94	0	0,1,1	-	-
5	SCN	A	1005	-	1,2,2	0.35	0	0,1,1	-	-
3	CPZ	A	501	2	12,13,13	3.55	4 (33%)	16,17,17	1.64	3 (18%)
5	SCN	A	1006	-	1,2,2	0.60	0	0,1,1	-	-
5	SCN	A	1004	-	1,2,2	0.17	0	0,1,1	-	-
2	HEM	A	500	1,3	50,50,50	1.88	15 (30%)	67,82,82	1.35	7 (10%)
4	CM5	A	1002	-	10,10,36	1.24	0	11,11,49	1.78	2 (18%)

In the following table, the Chirals column lists the number of chiral outliers, the number of chiral centers analysed, the number of these observed in the model and the number defined in the Chemical Component Dictionary. Similar counts are reported in the Torsion and Rings columns. '-' means no outliers of that kind were identified.

Mol	Type	Chain	Res	Link	Chirals	Torsions	Rings
4	CM5	A	1002	-	-	0/4/12/65	0/1/1/3
3	CPZ	A	501	2	-	0/4/4/4	0/2/2/2
4	CM5	A	1001	-	-	3/6/14/65	0/1/1/3
2	HEM	A	500	1,3	-	5/14/54/54	-

All (19) bond length outliers are listed below:

Mol	Chain	Res	Type	Atoms	Z	Observed(Å)	Ideal(Å)
3	A	501	CPZ	C4-N3	-7.33	1.30	1.38
2	A	500	HEM	C3D-C2D	6.81	1.51	1.36

Continued on next page...

Continued from previous page...

Mol	Chain	Res	Type	Atoms	Z	Observed(Å)	Ideal(Å)
3	A	501	CPZ	C6-C4	-6.44	1.37	1.47
3	A	501	CPZ	C2-N1	-5.91	1.27	1.37
2	A	500	HEM	FE-ND	4.86	2.09	1.94
2	A	500	HEM	CAB-C3B	3.37	1.56	1.47
3	A	501	CPZ	C5-N3	-3.20	1.29	1.35
2	A	500	HEM	FE-NA	3.18	2.05	1.95
2	A	500	HEM	C1B-NB	-2.72	1.35	1.40
2	A	500	HEM	FE-NB	2.52	2.02	1.94
2	A	500	HEM	C4C-NC	-2.38	1.35	1.39
2	A	500	HEM	CAC-C3C	2.21	1.53	1.47
2	A	500	HEM	C2A-C3A	-2.18	1.33	1.38
2	A	500	HEM	FE-NC	2.17	2.02	1.95
2	A	500	HEM	CMC-C2C	2.07	1.55	1.50
2	A	500	HEM	CAD-C3D	2.05	1.56	1.51
2	A	500	HEM	CAA-C2A	2.03	1.56	1.51
2	A	500	HEM	CBA-CGA	2.02	1.55	1.50
2	A	500	HEM	CMB-C2B	2.01	1.54	1.50

All (15) bond angle outliers are listed below:

Mol	Chain	Res	Type	Atoms	Z	Observed(°)	Ideal(°)
2	A	500	HEM	C4D-ND-C1D	4.53	110.57	105.21
4	A	1002	CM5	C11-C6-C7	-4.12	99.21	109.29
2	A	500	HEM	C3B-C2B-C1B	3.01	108.67	106.41
3	A	501	CPZ	C4-C2-N1	-2.92	106.57	111.04
4	A	1001	CM5	C3-C4-C5	2.63	123.54	113.62
3	A	501	CPZ	C2-N1-C5	2.60	111.05	105.94
2	A	500	HEM	CMA-C3A-C4A	-2.55	121.54	125.42
2	A	500	HEM	CAA-CBA-CGA	-2.54	106.93	113.67
4	A	1001	CM5	C11-C6-C7	-2.51	103.15	109.29
2	A	500	HEM	C4C-C3C-C2C	2.41	108.91	106.81
3	A	501	CPZ	N3-C5-N1	-2.28	106.78	111.00
4	A	1002	CM5	C5-C6-C7	2.27	117.76	112.05
4	A	1001	CM5	C5-C6-C7	2.22	117.62	112.05
2	A	500	HEM	CBD-CAD-C3D	-2.18	106.49	112.53
2	A	500	HEM	CAD-C3D-C4D	2.10	128.35	124.70

There are no chirality outliers.

All (8) torsion outliers are listed below:

Mol	Chain	Res	Type	Atoms
4	A	1001	CM5	C1-C2-C3-C4

Continued on next page...

Continued from previous page...

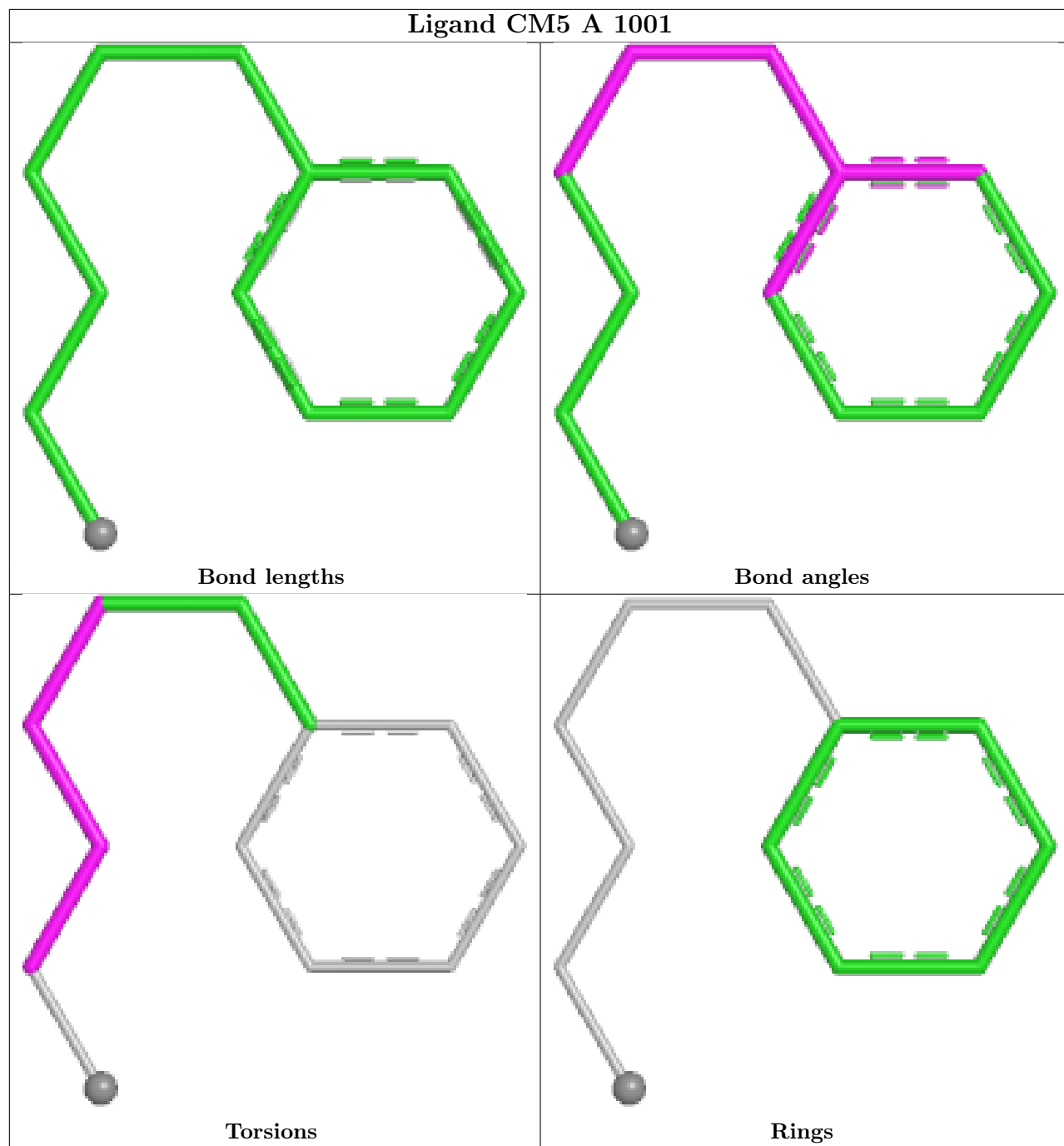
Mol	Chain	Res	Type	Atoms
4	A	1001	CM5	O12-C1-C2-C3
4	A	1001	CM5	C2-C3-C4-C5
2	A	500	HEM	C2C-C3C-CAC-CBC
2	A	500	HEM	CAA-CBA-CGA-O2A
2	A	500	HEM	C4C-C3C-CAC-CBC
2	A	500	HEM	CAA-CBA-CGA-O1A
2	A	500	HEM	CAD-CBD-CGD-O2D

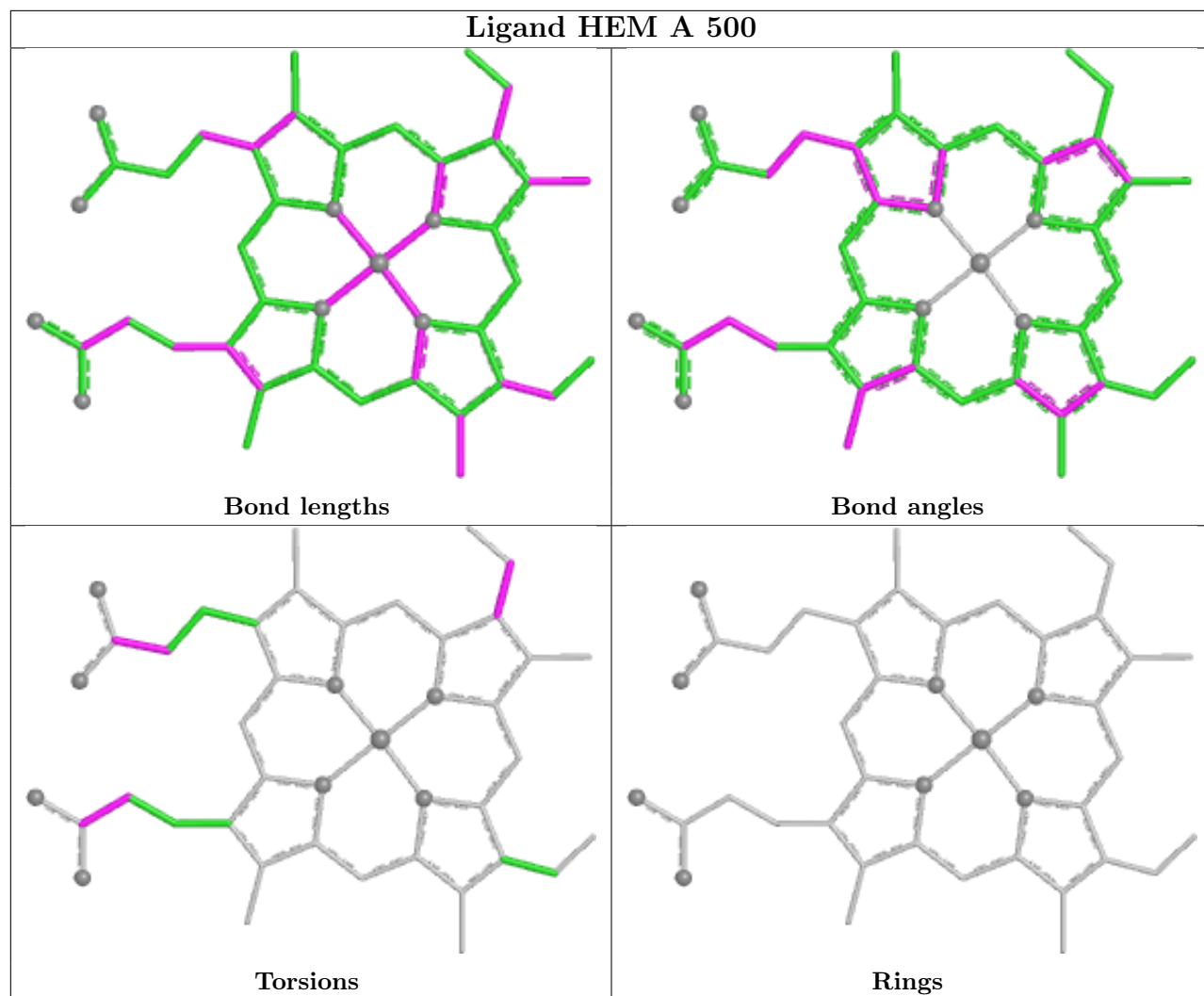
There are no ring outliers.

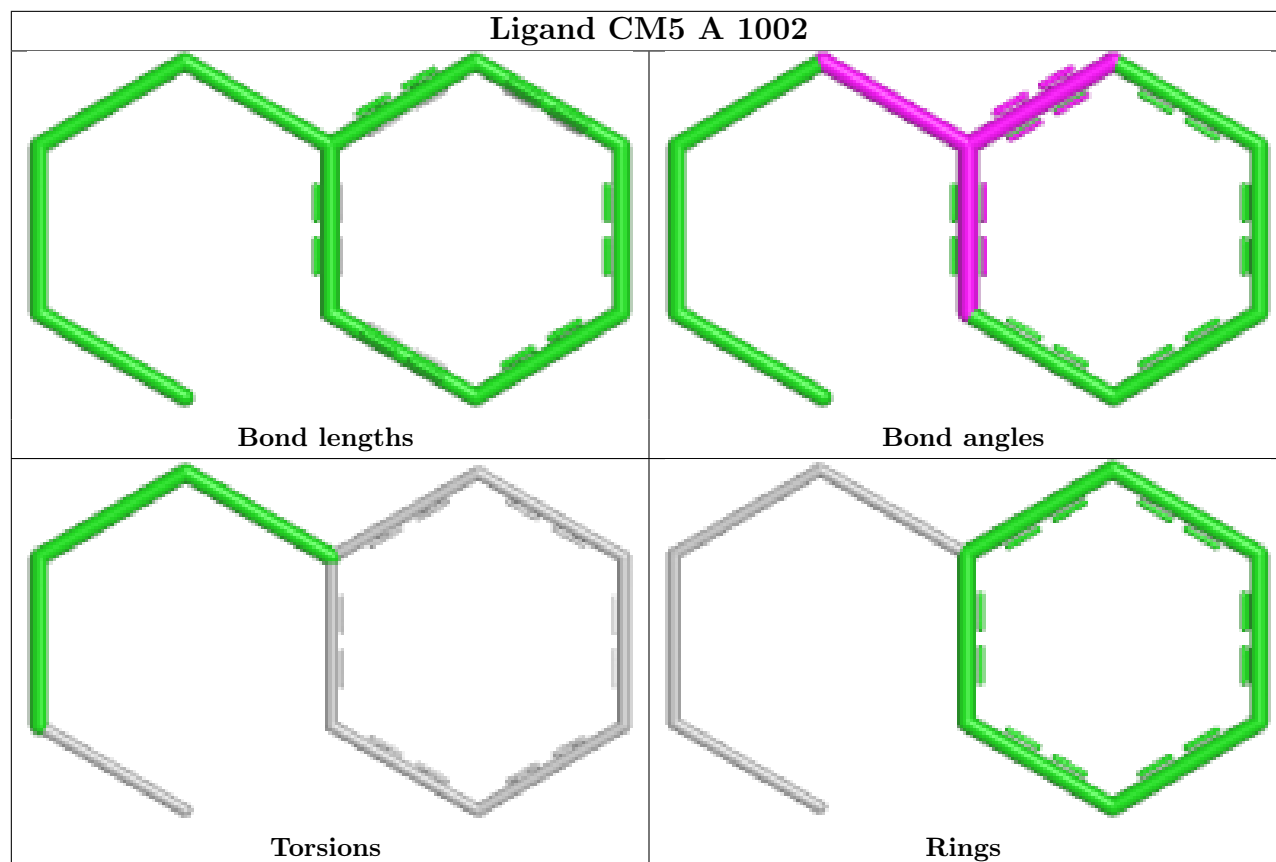
2 monomers are involved in 4 short contacts:

Mol	Chain	Res	Type	Clashes	Symm-Clashes
4	A	1001	CM5	3	0
2	A	500	HEM	1	0

The following is a two-dimensional graphical depiction of Mogul quality analysis of bond lengths, bond angles, torsion angles, and ring geometry for all instances of the Ligand of Interest. In addition, ligands with molecular weight > 250 and outliers as shown on the validation Tables will also be included. For torsion angles, if less than 5% of the Mogul distribution of torsion angles is within 10 degrees of the torsion angle in question, then that torsion angle is considered an outlier. Any bond that is central to one or more torsion angles identified as an outlier by Mogul will be highlighted in the graph. For rings, the root-mean-square deviation (RMSD) between the ring in question and similar rings identified by Mogul is calculated over all ring torsion angles. If the average RMSD is greater than 60 degrees and the minimal RMSD between the ring in question and any Mogul-identified rings is also greater than 60 degrees, then that ring is considered an outlier. The outliers are highlighted in purple. The color gray indicates Mogul did not find sufficient equivalents in the CSD to analyse the geometry.







5.7 Other polymers [i](#)

There are no such residues in this entry.

5.8 Polymer linkage issues [i](#)

There are no chain breaks in this entry.

6 Fit of model and data [i](#)

6.1 Protein, DNA and RNA chains [i](#)

In the following table, the column labelled ‘#RSRZ > 2’ contains the number (and percentage) of RSRZ outliers, followed by percent RSRZ outliers for the chain as percentile scores relative to all X-ray entries and entries of similar resolution. The OWAB column contains the minimum, median, 95th percentile and maximum values of the occupancy-weighted average B-factor per residue. The column labelled ‘Q < 0.9’ lists the number of (and percentage) of residues with an average occupancy less than 0.9.

Mol	Chain	Analysed	<RSRZ>	#RSRZ > 2		OWAB(Å ²)	Q < 0.9
1	A	465/476 (97%)	-0.07	20 (4%)	40 39	6, 19, 39, 70	14 (3%)

All (20) RSRZ outliers are listed below:

Mol	Chain	Res	Type	RSRZ
1	A	283	PHE	8.7
1	A	280	HIS	5.2
1	A	278	ASN	4.7
1	A	279	ALA	4.6
1	A	281	SER	4.6
1	A	138	GLY	4.5
1	A	282	GLU	4.4
1	A	276	LYS	4.4
1	A	277	SER	4.3
1	A	136	GLY	4.1
1	A	284	SER	4.0
1	A	137	MET	3.7
1	A	139	LYS	3.4
1	A	275	GLU	3.1
1	A	285	HIS	2.6
1	A	272	MET	2.4
1	A	400	HIS	2.4
1	A	135	PHE	2.2
1	A	416	ALA	2.2
1	A	134	ASP	2.0

6.2 Non-standard residues in protein, DNA, RNA chains [i](#)

There are no non-standard protein/DNA/RNA residues in this entry.

6.3 Carbohydrates [i](#)

There are no oligosaccharides in this entry.

6.4 Ligands [i](#)

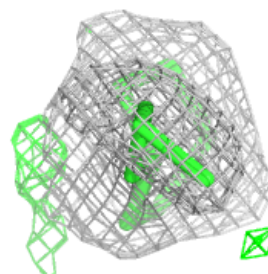
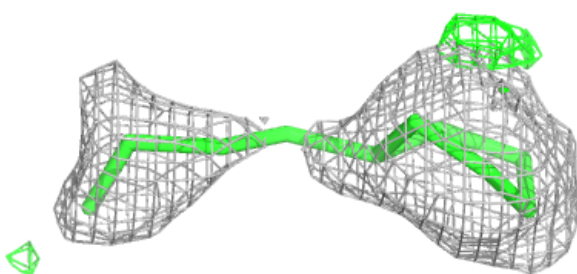
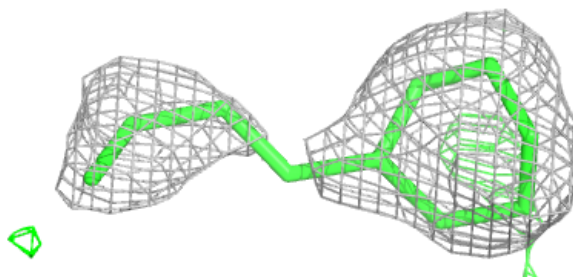
In the following table, the Atoms column lists the number of modelled atoms in the group and the number defined in the chemical component dictionary. The B-factors column lists the minimum, median, 95th percentile and maximum values of B factors of atoms in the group. The column labelled 'Q< 0.9' lists the number of atoms with occupancy less than 0.9.

Mol	Type	Chain	Res	Atoms	RSCC	RSR	B-factors(\AA^2)	Q<0.9
4	CM5	A	1002	10/34	0.79	0.21	45,46,48,48	0
5	SCN	A	1006	3/3	0.86	0.17	46,46,46,47	0
4	CM5	A	1001	12/34	0.88	0.15	44,47,48,49	0
3	CPZ	A	501	12/12	0.91	0.08	16,26,34,39	1
5	SCN	A	1005	3/3	0.92	0.11	33,33,34,36	0
5	SCN	A	1004	3/3	0.93	0.15	36,36,36,36	0
5	SCN	A	1003	3/3	0.97	0.07	24,24,24,25	0
2	HEM	A	500	43/43	0.99	0.05	6,10,13,16	0

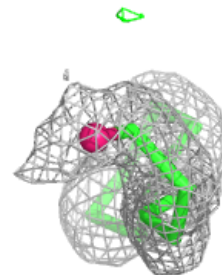
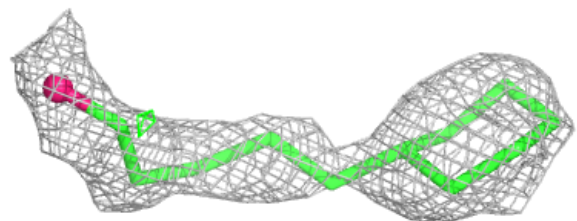
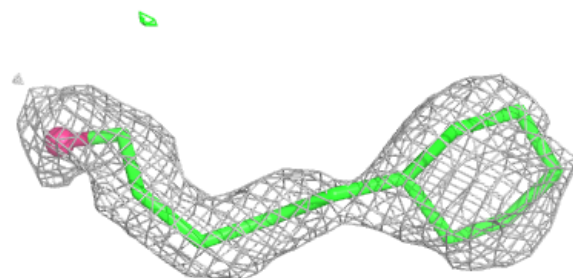
The following is a graphical depiction of the model fit to experimental electron density of all instances of the Ligand of Interest. In addition, ligands with molecular weight > 250 and outliers as shown on the geometry validation Tables will also be included. Each fit is shown from different orientation to approximate a three-dimensional view.

Electron density around CM5 A 1002:

$2mF_o-DF_c$ (at 0.7 rmsd) in gray
 mF_o-DF_c (at 3 rmsd) in purple (negative)
and green (positive)

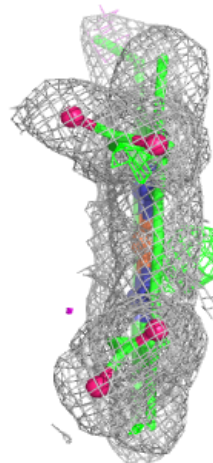
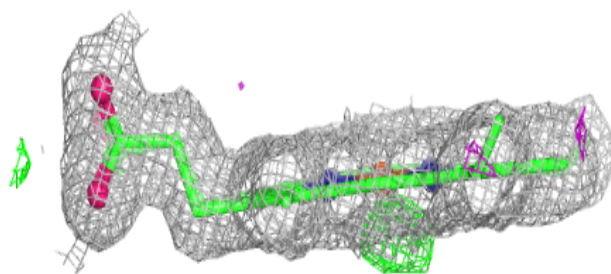
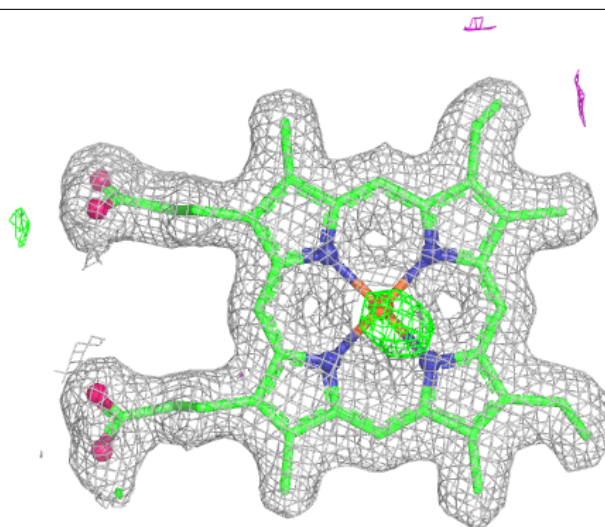
**Electron density around CM5 A 1001:**

$2mF_o-DF_c$ (at 0.7 rmsd) in gray
 mF_o-DF_c (at 3 rmsd) in purple (negative)
and green (positive)



Electron density around HEM A 500:

$2mF_o-DF_c$ (at 0.7 rmsd) in gray
 mF_o-DF_c (at 3 rmsd) in purple (negative)
and green (positive)



6.5 Other polymers [i](#)

There are no such residues in this entry.