



Full wwPDB X-ray Structure Validation Report ⓘ

Mar 9, 2026 – 11:32 AM UTC

PDB ID : 3NFB / pdb_00003nfb
Title : Crystal structure of the N-terminal beta-aminopeptidase BapA in complex with hydrolyzed ampicillin
Authors : Merz, T.; Heck, T.; Geueke, B.; Kohler, H.-P.E.; Gruetter, M.G.
Deposited on : 2010-06-10
Resolution : 1.85 Å(reported)

This is a Full wwPDB X-ray Structure Validation Report for a publicly released PDB entry.

We welcome your comments at validation@mail.wwpdb.org

A user guide is available at

<https://www.wwpdb.org/validation/2017/XrayValidationReportHelp>

with specific help available everywhere you see the ⓘ symbol.

The types of validation reports are described at

<http://www.wwpdb.org/validation/2017/FAQs#types>.

The following versions of software and data (see [references ⓘ](#)) were used in the production of this report:

MolProbity : 4-5-2 with Phenix2.0
Mogul : 2022.3.0, CSD as543be (2022)
Xtriage (Phenix) : 2.0
EDS : 3.0
Buster-report : wwPDB partial adaption of 1.1.7 (2018)
Percentile statistics : 20250101.v01 (using entries in the PDB archive January 1st 2025)
CCP4 : 9.0.010 (Gargrove)
Density-Fitness : 1.0.12
Ideal geometry (proteins) : Engh & Huber (2001)
Ideal geometry (DNA, RNA) : Parkinson et al. (1996)
Validation Pipeline (wwPDB-VP) : 2.49

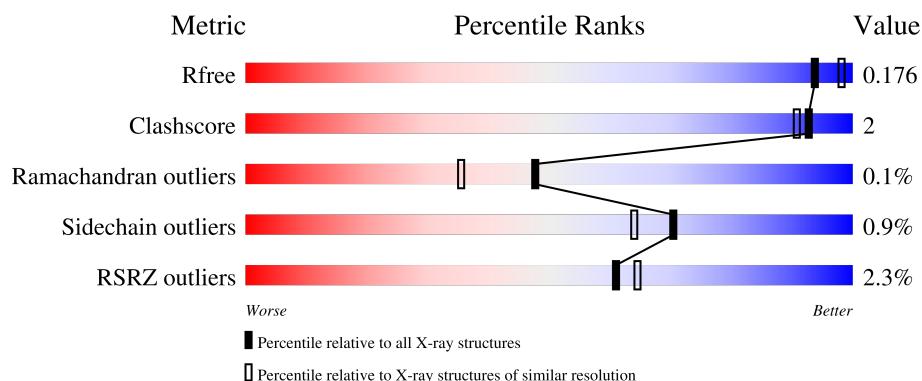
1 Overall quality at a glance

The following experimental techniques were used to determine the structure:

X-RAY DIFFRACTION

The reported resolution of this entry is 1.85 Å.

Percentile scores (ranging between 0-100) for global validation metrics of the entry are shown in the following graphic. The table shows the number of entries on which the scores are based.



Metric	Whole archive (#Entries)	Similar resolution (#Entries, resolution range(Å))
R_{free}	180053	3428 (1.86-1.86)
Clashscore	190562	3579 (1.86-1.86)
Ramachandran outliers	187476	3553 (1.86-1.86)
Sidechain outliers	187428	3553 (1.86-1.86)
RSRZ outliers	180081	3429 (1.86-1.86)

The table below summarises the geometric issues observed across the polymeric chains and their fit to the electron density. The red, orange, yellow and green segments of the lower bar indicate the fraction of residues that contain outliers for ≥ 3 , 2, 1 and 0 types of geometric quality criteria respectively. A grey segment represents the fraction of residues that are not modelled. The numeric value for each fraction is indicated below the corresponding segment, with a dot representing fractions $\leq 5\%$. The upper red bar (where present) indicates the fraction of residues that have poor fit to the electron density. The numeric value is given above the bar.

Mol	Chain	Length	Quality of chain
1	A	373	<div> <div>2%</div> <div>94%</div> <div>5%</div> <div>1%</div> </div>
1	B	373	<div> <div>2%</div> <div>92%</div> <div>5%</div> <div>1%</div> </div>
1	C	373	<div> <div>3%</div> <div>94%</div> <div>5%</div> <div>1%</div> </div>
1	D	373	<div> <div>2%</div> <div>95%</div> <div>5%</div> <div>1%</div> </div>

2 Entry composition [i](#)

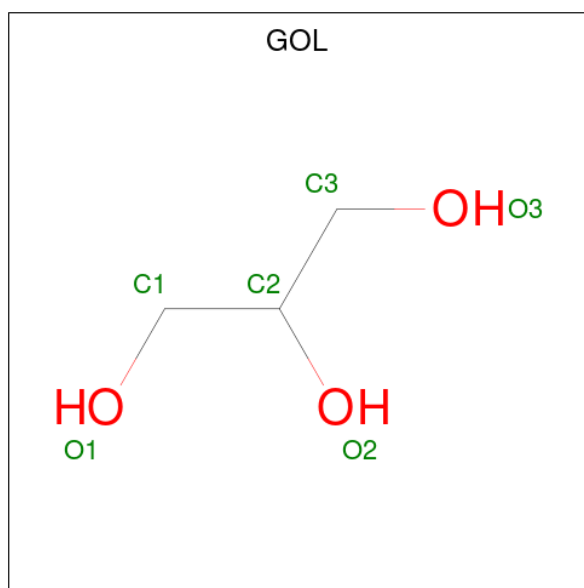
There are 5 unique types of molecules in this entry. The entry contains 12103 atoms, of which 0 are hydrogens and 0 are deuteriums.

In the tables below, the ZeroOcc column contains the number of atoms modelled with zero occupancy, the AltConf column contains the number of residues with at least one atom in alternate conformation and the Trace column contains the number of residues modelled with at most 2 atoms.

- Molecule 1 is a protein called Beta-peptidyl aminopeptidase.

Mol	Chain	Residues	Atoms					ZeroOcc	AltConf	Trace
1	A	367	Total	C	N	O	S	0	6	0
			2704	1692	495	507	10			
1	B	364	Total	C	N	O	S	0	2	0
			2656	1661	484	501	10			
1	C	366	Total	C	N	O	S	0	2	0
			2666	1671	483	502	10			
1	D	364	Total	C	N	O	S	0	2	0
			2654	1665	480	499	10			

- Molecule 2 is GLYCEROL (CCD ID: GOL) (formula: $C_3H_8O_3$).



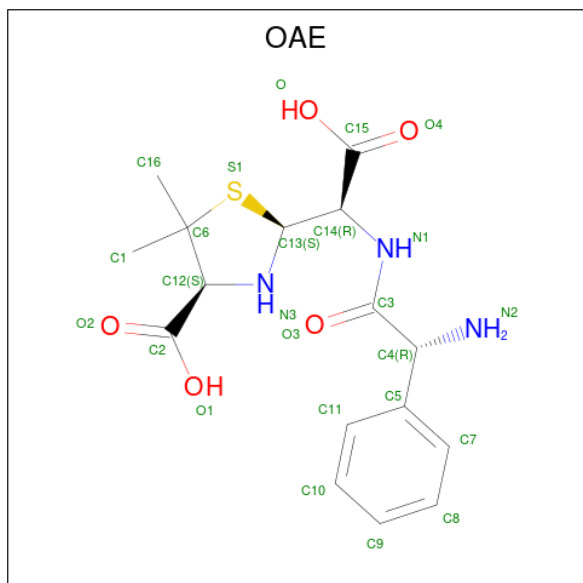
Mol	Chain	Residues	Atoms			ZeroOcc	AltConf
2	A	1	Total	C	O	0	0
			6	3	3		
2	A	1	Total	C	O	0	0
			6	3	3		

Continued on next page...

Continued from previous page...

Mol	Chain	Residues	Atoms			ZeroOcc	AltConf
2	C	1	Total	C	O	0	0
			6	3	3		
2	C	1	Total	C	O	0	0
			6	3	3		

- Molecule 3 is (2S,4S)-2-[(R)-{[(2R)-2-amino-2-phenylacetyl]amino}(carboxymethyl)-5,5-dimethyl-1,3-thiazolidine-4-carboxylic acid (CCD ID: OAE) (formula: C₁₆H₂₁N₃O₅S).



Mol	Chain	Residues	Atoms					ZeroOcc	AltConf
3	A	1	Total	C	N	O	S	0	0
			25	16	3	5	1		
3	A	1	Total	C	N	O	S	0	0
			25	16	3	5	1		
3	B	1	Total	C	N	O	S	0	0
			25	16	3	5	1		
3	C	1	Total	C	N	O	S	0	0
			25	16	3	5	1		
3	D	1	Total	C	N	O	S	0	0
			25	16	3	5	1		
3	D	1	Total	C	N	O	S	0	0
			25	16	3	5	1		

- Molecule 4 is SULFATE ION (CCD ID: SO4) (formula: O₄S).



Mol	Chain	Residues	Atoms			ZeroOcc	AltConf
4	A	1	Total	O	S	0	0
			5	4	1		
4	B	1	Total	O	S	0	0
			5	4	1		
4	C	1	Total	O	S	0	0
			5	4	1		
4	D	1	Total	O	S	0	0
			5	4	1		

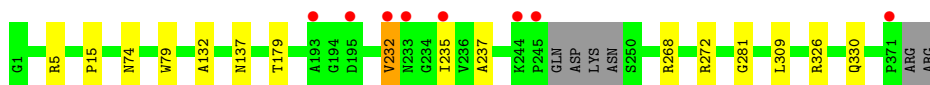
- Molecule 5 is water.

Mol	Chain	Residues	Atoms		ZeroOcc	AltConf
5	A	314	Total	O	0	0
			314	314		
5	B	291	Total	O	0	0
			291	291		
5	C	303	Total	O	0	0
			303	303		
5	D	321	Total	O	0	0
			321	321		

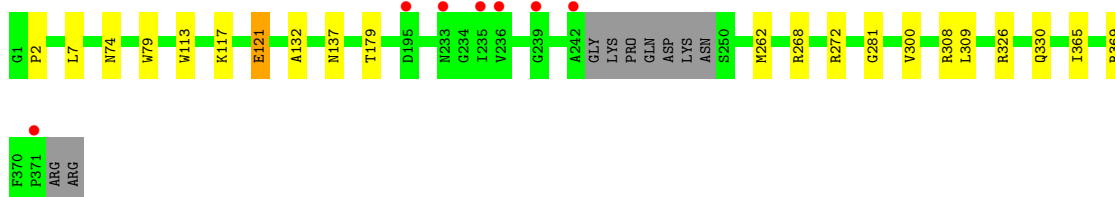
3 Residue-property plots [i](#)

These plots are drawn for all protein, RNA, DNA and oligosaccharide chains in the entry. The first graphic for a chain summarises the proportions of the various outlier classes displayed in the second graphic. The second graphic shows the sequence view annotated by issues in geometry and electron density. Residues are color-coded according to the number of geometric quality criteria for which they contain at least one outlier: green = 0, yellow = 1, orange = 2 and red = 3 or more. A red dot above a residue indicates a poor fit to the electron density ($RSRZ > 2$). Stretches of 2 or more consecutive residues without any outlier are shown as a green connector. Residues present in the sample, but not in the model, are shown in grey.

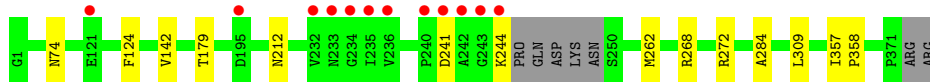
- Molecule 1: Beta-peptidyl aminopeptidase



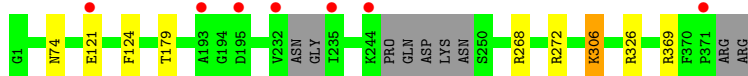
- Molecule 1: Beta-peptidyl aminopeptidase



- Molecule 1: Beta-peptidyl aminopeptidase



- Molecule 1: Beta-peptidyl aminopeptidase



4 Data and refinement statistics

Property	Value	Source
Space group	P 1 21 1	Depositor
Cell constants a, b, c, α , β , γ	88.30Å 97.10Å 102.20Å 90.00° 108.70° 90.00°	Depositor
Resolution (Å)	49.30 – 1.85 49.30 – 1.85	Depositor EDS
% Data completeness (in resolution range)	98.5 (49.30-1.85) 98.5 (49.30-1.85)	Depositor EDS
R_{merge}	0.11	Depositor
R_{sym}	0.09	Depositor
$\langle I/\sigma(I) \rangle$ ¹	3.92 (at 1.86Å)	Xtriage
Refinement program	PHENIX (phenix.refine: 1.6.1_357)	Depositor
R, R_{free}	0.150 , 0.178 0.148 , 0.176	Depositor DCC
R_{free} test set	1371 reflections (1.00%)	wwPDB-VP
Wilson B-factor (Å ²)	17.5	Xtriage
Anisotropy	0.524	Xtriage
Bulk solvent k_{sol} (e/Å ³), B_{sol} (Å ²)	0.37 , 49.9	EDS
L-test for twinning ²	$\langle L \rangle = 0.49$, $\langle L^2 \rangle = 0.32$	Xtriage
Estimated twinning fraction	No twinning to report.	Xtriage
F_o, F_c correlation	0.97	EDS
Total number of atoms	12103	wwPDB-VP
Average B, all atoms (Å ²)	20.0	wwPDB-VP

Xtriage's analysis on translational NCS is as follows: *The largest off-origin peak in the Patterson function is 3.70% of the height of the origin peak. No significant pseudotranslation is detected.*

¹Intensities estimated from amplitudes.

²Theoretical values of $\langle |L| \rangle$, $\langle L^2 \rangle$ for acentric reflections are 0.5, 0.333 respectively for untwinned datasets, and 0.375, 0.2 for perfectly twinned datasets.

5 Model quality

5.1 Standard geometry

Bond lengths and bond angles in the following residue types are not validated in this section: GOL, SO4, OAE

The Z score for a bond length (or angle) is the number of standard deviations the observed value is removed from the expected value. A bond length (or angle) with $|Z| > 5$ is considered an outlier worth inspection. RMSZ is the root-mean-square of all Z scores of the bond lengths (or angles).

Mol	Chain	Bond lengths		Bond angles	
		RMSZ	# Z >5	RMSZ	# Z >5
1	A	0.48	0/2766	0.77	3/3753 (0.1%)
1	B	0.49	0/2705	0.77	3/3673 (0.1%)
1	C	0.48	0/2719	0.76	3/3691 (0.1%)
1	D	0.48	0/2706	0.75	0/3672
All	All	0.48	0/10896	0.76	9/14789 (0.1%)

There are no bond length outliers.

All (9) bond angle outliers are listed below:

Mol	Chain	Res	Type	Atoms	Z	Observed(°)	Ideal(°)
1	A	281	GLY	N-CA-C	5.86	121.66	114.69
1	A	309	LEU	CA-C-N	5.77	125.39	119.56
1	A	309	LEU	C-N-CA	5.77	125.39	119.56
1	B	309	LEU	CA-C-N	5.76	125.38	119.56
1	B	309	LEU	C-N-CA	5.76	125.38	119.56
1	C	142	VAL	N-CA-C	5.76	115.94	110.42
1	C	309	LEU	CA-C-N	5.65	125.50	119.28
1	C	309	LEU	C-N-CA	5.65	125.50	119.28
1	B	281	GLY	N-CA-C	5.50	121.23	114.69

There are no chirality outliers.

There are no planarity outliers.

5.2 Too-close contacts

In the following table, the Non-H and H(model) columns list the number of non-hydrogen atoms and hydrogen atoms in the chain respectively. The H(added) column lists the number of hydrogen atoms added and optimized by MolProbity. The Clashes column lists the number of clashes within the asymmetric unit, whereas Symm-Clashes lists symmetry-related clashes.

Mol	Chain	Non-H	H(model)	H(added)	Clashes	Symm-Clashes
1	A	2704	0	2737	10	0
1	B	2656	0	2674	16	0
1	C	2666	0	2687	10	0
1	D	2654	0	2677	7	0
2	A	12	0	16	1	0
2	C	12	0	16	1	0
3	A	50	0	38	0	0
3	B	25	0	19	0	0
3	C	25	0	19	0	0
3	D	50	0	38	0	0
4	A	5	0	0	0	0
4	B	5	0	0	0	0
4	C	5	0	0	0	0
4	D	5	0	0	0	0
5	A	314	0	0	0	0
5	B	291	0	0	1	0
5	C	303	0	0	1	0
5	D	321	0	0	1	0
All	All	12103	0	10921	33	0

The all-atom clashscore is defined as the number of clashes found per 1000 atoms (including hydrogen atoms). The all-atom clashscore for this structure is 2.

All (33) close contacts within the same asymmetric unit are listed below, sorted by their clash magnitude.

Atom-1	Atom-2	Interatomic distance (Å)	Clash overlap (Å)
1:A:74:ASN:HD21	1:D:268:ARG:HH21	1.13	0.90
1:A:268:ARG:HH21	1:D:74:ASN:HD21	1.18	0.90
1:B:74:ASN:HD21	1:C:268:ARG:HH21	1.18	0.89
1:B:268:ARG:HH21	1:C:74:ASN:HD21	1.20	0.84
1:A:232:VAL:HG13	1:A:237:ALA:HB2	1.86	0.57
1:A:326[B]:ARG:CZ	1:A:330:GLN:HE22	2.19	0.56
1:C:212:ASN:ND2	5:C:747:HOH:O	2.32	0.55
1:C:262:MET:HE1	2:C:374:GOL:H31	1.91	0.52
1:A:137:ASN:HB2	1:C:124[B]:PHE:CZ	2.44	0.51
1:D:306:LYS:HB2	1:D:306:LYS:NZ	2.25	0.51
1:B:2:PRO:HB2	1:B:7:LEU:CD1	2.41	0.51
1:B:137:ASN:HB2	1:D:124[B]:PHE:CZ	2.46	0.51
1:A:5:ARG:NH2	1:A:15:PRO:HG3	2.29	0.47
1:B:2:PRO:HB2	1:B:7:LEU:HD11	1.95	0.47
1:C:241:ASP:HB3	1:C:244:LYS:HD2	1.96	0.47
1:B:74:ASN:ND2	1:C:272:ARG:HH12	2.13	0.46

Continued on next page...

Continued from previous page...

Atom-1	Atom-2	Interatomic distance (Å)	Clash overlap (Å)
2:A:374:GOL:H31	1:B:262:MET:HE1	1.98	0.46
1:A:74:ASN:ND2	1:D:272:ARG:HH12	2.15	0.45
1:B:369[A]:ARG:NH1	5:B:635:HOH:O	2.48	0.45
1:B:326[B]:ARG:NH1	1:B:330:GLN:HE22	2.15	0.44
1:B:300:VAL:HG21	1:B:308:ARG:NH2	2.33	0.43
1:A:272:ARG:HH12	1:D:74:ASN:ND2	2.17	0.43
1:A:232:VAL:HG13	1:A:237:ALA:CB	2.49	0.42
1:C:357:ILE:HA	1:C:358:PRO:HD3	1.91	0.42
1:B:113:TRP:NE1	1:B:117:LYS:HE2	2.34	0.41
1:B:365:ILE:O	1:B:369[B]:ARG:HD3	2.21	0.41
1:A:79:TRP:CG	1:A:132:ALA:HB2	2.56	0.40
1:B:272:ARG:HH12	1:C:74:ASN:ND2	2.19	0.40
1:B:369[A]:ARG:HA	1:B:369[A]:ARG:HD2	1.97	0.40
1:B:79:TRP:CG	1:B:132:ALA:HB2	2.57	0.40
1:B:121:GLU:H	1:B:121:GLU:HG3	1.57	0.40
1:D:326:ARG:NH2	5:D:1155:HOH:O	2.53	0.40

There are no symmetry-related clashes.

5.3 Torsion angles [i](#)

5.3.1 Protein backbone [i](#)

In the following table, the Percentiles column shows the percent Ramachandran outliers of the chain as a percentile score with respect to all X-ray entries followed by that with respect to entries of similar resolution.

The Analysed column shows the number of residues for which the backbone conformation was analysed, and the total number of residues.

Mol	Chain	Analysed	Favoured	Allowed	Outliers	Percentiles	
1	A	369/373 (99%)	364 (99%)	5 (1%)	0	100	100
1	B	362/373 (97%)	355 (98%)	7 (2%)	0	100	100
1	C	364/373 (98%)	356 (98%)	7 (2%)	1 (0%)	36	25
1	D	360/373 (96%)	353 (98%)	7 (2%)	0	100	100
All	All	1455/1492 (98%)	1428 (98%)	26 (2%)	1 (0%)	48	35

All (1) Ramachandran outliers are listed below:

Mol	Chain	Res	Type
1	C	284	ALA

5.3.2 Protein sidechains ⓘ

In the following table, the Percentiles column shows the percent sidechain outliers of the chain as a percentile score with respect to all X-ray entries followed by that with respect to entries of similar resolution.

The Analysed column shows the number of residues for which the sidechain conformation was analysed, and the total number of residues.

Mol	Chain	Analysed	Rotameric	Outliers	Percentiles	
1	A	277/277 (100%)	274 (99%)	3 (1%)	65	57
1	B	271/277 (98%)	269 (99%)	2 (1%)	76	70
1	C	272/277 (98%)	271 (100%)	1 (0%)	84	82
1	D	271/277 (98%)	266 (98%)	5 (2%)	51	40
All	All	1091/1108 (98%)	1080 (99%)	11 (1%)	70	60

All (11) residues with a non-rotameric sidechain are listed below:

Mol	Chain	Res	Type
1	A	179	THR
1	A	232	VAL
1	A	235	ILE
1	B	121	GLU
1	B	179	THR
1	C	179	THR
1	D	121	GLU
1	D	179	THR
1	D	306	LYS
1	D	369[A]	ARG
1	D	369[B]	ARG

Sometimes sidechains can be flipped to improve hydrogen bonding and reduce clashes. All (12) such sidechains are listed below:

Mol	Chain	Res	Type
1	A	74	ASN
1	A	233	ASN
1	A	330	GLN
1	A	339	GLN
1	B	74	ASN

Continued on next page...

Continued from previous page...

Mol	Chain	Res	Type
1	B	339	GLN
1	C	74	ASN
1	C	220	GLN
1	D	74	ASN
1	D	108	GLN
1	D	212	ASN
1	D	339	GLN

5.3.3 RNA ⓘ

There are no RNA molecules in this entry.

5.4 Non-standard residues in protein, DNA, RNA chains ⓘ

There are no non-standard protein/DNA/RNA residues in this entry.

5.5 Carbohydrates ⓘ

There are no oligosaccharides in this entry.

5.6 Ligand geometry ⓘ

14 ligands are modelled in this entry.

In the following table, the Counts columns list the number of bonds (or angles) for which Mogul statistics could be retrieved, the number of bonds (or angles) that are observed in the model and the number of bonds (or angles) that are defined in the Chemical Component Dictionary. The Link column lists molecule types, if any, to which the group is linked. The Z score for a bond length (or angle) is the number of standard deviations the observed value is removed from the expected value. A bond length (or angle) with $|Z| > 2$ is considered an outlier worth inspection. RMSZ is the root-mean-square of all Z scores of the bond lengths (or angles).

Mol	Type	Chain	Res	Link	Bond lengths			Bond angles		
					Counts	RMSZ	# Z > 2	Counts	RMSZ	# Z > 2
3	OAE	A	376	-	20,26,26	3.28	4 (20%)	26,38,38	1.34	3 (11%)
4	SO4	D	376	-	4,4,4	0.23	0	6,6,6	0.15	0
3	OAE	A	377	-	20,26,26	3.43	4 (20%)	26,38,38	1.73	5 (19%)
2	GOL	C	374	-	5,5,5	0.47	0	5,5,5	0.51	0
3	OAE	C	376	-	20,26,26	3.26	4 (20%)	26,38,38	1.33	4 (15%)
3	OAE	D	374	-	20,26,26	3.29	5 (25%)	26,38,38	1.36	3 (11%)

Mol	Type	Chain	Res	Link	Bond lengths			Bond angles		
					Counts	RMSZ	# Z > 2	Counts	RMSZ	# Z > 2
2	GOL	A	374	-	5,5,5	0.41	0	5,5,5	0.60	0
3	OAE	B	374	-	20,26,26	3.28	4 (20%)	26,38,38	1.39	5 (19%)
3	OAE	D	375	-	20,26,26	3.43	4 (20%)	26,38,38	1.75	6 (23%)
4	SO4	A	378	-	4,4,4	0.32	0	6,6,6	0.19	0
2	GOL	A	375	-	5,5,5	0.41	0	5,5,5	0.42	0
4	SO4	B	375	-	4,4,4	0.24	0	6,6,6	0.06	0
2	GOL	C	375	-	5,5,5	0.44	0	5,5,5	0.41	0
4	SO4	C	377	-	4,4,4	0.22	0	6,6,6	0.08	0

In the following table, the Chirals column lists the number of chiral outliers, the number of chiral centers analysed, the number of these observed in the model and the number defined in the Chemical Component Dictionary. Similar counts are reported in the Torsion and Rings columns. '-' means no outliers of that kind were identified.

Mol	Type	Chain	Res	Link	Chirals	Torsions	Rings
3	OAE	A	376	-	-	2/20/39/39	0/2/2/2
3	OAE	A	377	-	-	2/20/39/39	0/2/2/2
2	GOL	C	374	-	-	0/4/4/4	-
3	OAE	C	376	-	-	1/20/39/39	0/2/2/2
3	OAE	D	374	-	-	2/20/39/39	0/2/2/2
2	GOL	A	374	-	-	0/4/4/4	-
3	OAE	B	374	-	-	1/20/39/39	0/2/2/2
3	OAE	D	375	-	-	2/20/39/39	0/2/2/2
2	GOL	A	375	-	-	2/4/4/4	-
2	GOL	C	375	-	-	0/4/4/4	-

All (25) bond length outliers are listed below:

Mol	Chain	Res	Type	Atoms	Z	Observed(Å)	Ideal(Å)
3	A	377	OAE	C13-S1	-9.69	1.62	1.84
3	D	375	OAE	C13-S1	-9.59	1.62	1.84
3	D	374	OAE	C13-S1	-9.32	1.63	1.84
3	C	376	OAE	C13-S1	-9.27	1.63	1.84
3	B	374	OAE	C13-S1	-9.13	1.64	1.84
3	A	376	OAE	C13-S1	-9.13	1.64	1.84
3	D	375	OAE	C6-S1	-8.75	1.68	1.85
3	A	377	OAE	C6-S1	-8.64	1.68	1.85
3	A	376	OAE	C6-S1	-8.47	1.68	1.85
3	C	376	OAE	C6-S1	-8.35	1.68	1.85
3	B	374	OAE	C6-S1	-8.34	1.68	1.85
3	D	374	OAE	C6-S1	-8.18	1.69	1.85

Continued on next page...

Continued from previous page...

Mol	Chain	Res	Type	Atoms	Z	Observed(Å)	Ideal(Å)
3	B	374	OAE	C12-N3	5.35	1.57	1.46
3	A	377	OAE	C12-N3	5.16	1.57	1.46
3	A	377	OAE	C3-N1	5.13	1.45	1.34
3	A	376	OAE	C12-N3	5.11	1.57	1.46
3	D	375	OAE	C12-N3	5.10	1.57	1.46
3	D	375	OAE	C3-N1	5.10	1.45	1.34
3	D	374	OAE	C12-N3	5.09	1.57	1.46
3	C	376	OAE	C12-N3	5.03	1.56	1.46
3	D	374	OAE	C3-N1	4.63	1.43	1.34
3	B	374	OAE	C3-N1	4.48	1.43	1.34
3	C	376	OAE	C3-N1	4.31	1.43	1.34
3	A	376	OAE	C3-N1	4.25	1.43	1.34
3	D	374	OAE	O4-C15	2.02	1.28	1.22

All (26) bond angle outliers are listed below:

Mol	Chain	Res	Type	Atoms	Z	Observed(°)	Ideal(°)
3	D	375	OAE	C4-C3-N1	4.54	120.24	114.68
3	D	375	OAE	C6-S1-C13	4.51	104.85	93.41
3	A	377	OAE	C6-S1-C13	4.44	104.69	93.41
3	A	377	OAE	C4-C3-N1	4.12	119.73	114.68
3	D	374	OAE	C6-S1-C13	3.78	103.01	93.41
3	B	374	OAE	C6-S1-C13	3.68	102.76	93.41
3	A	376	OAE	C6-S1-C13	3.67	102.73	93.41
3	C	376	OAE	C6-S1-C13	3.63	102.64	93.41
3	A	376	OAE	O-C15-O4	-3.13	116.98	124.08
3	B	374	OAE	O-C15-O4	-2.94	117.41	124.08
3	B	374	OAE	O1-C2-O2	-2.68	118.01	124.08
3	D	374	OAE	O-C15-O4	-2.64	118.10	124.08
3	C	376	OAE	O-C15-O4	-2.58	118.23	124.08
3	C	376	OAE	O1-C2-O2	-2.50	118.41	124.08
3	A	377	OAE	C13-C14-N1	2.44	115.16	109.97
3	D	375	OAE	O1-C2-O2	-2.35	118.75	124.08
3	A	376	OAE	O1-C2-O2	-2.35	118.75	124.08
3	D	375	OAE	C13-C14-N1	2.34	114.95	109.97
3	A	377	OAE	O1-C2-O2	-2.31	118.84	124.08
3	A	377	OAE	C15-C14-N1	-2.27	105.19	110.17
3	D	374	OAE	O1-C2-O2	-2.25	118.98	124.08
3	D	375	OAE	C15-C14-N1	-2.21	105.32	110.17
3	D	375	OAE	O-C15-O4	-2.15	119.20	124.08
3	B	374	OAE	C5-C4-C3	-2.09	107.33	111.76
3	C	376	OAE	C5-C4-C3	-2.01	107.50	111.76

Continued on next page...

Continued from previous page...

Mol	Chain	Res	Type	Atoms	Z	Observed(°)	Ideal(°)
3	B	374	OAE	C11-C5-C7	2.01	120.80	118.30

There are no chirality outliers.

All (12) torsion outliers are listed below:

Mol	Chain	Res	Type	Atoms
3	A	377	OAE	C13-C14-C15-O4
3	D	375	OAE	C13-C14-C15-O4
2	A	375	GOL	O1-C1-C2-C3
3	A	377	OAE	C13-C14-C15-O
3	D	375	OAE	C13-C14-C15-O
2	A	375	GOL	O1-C1-C2-O2
3	C	376	OAE	N3-C12-C2-O2
3	A	376	OAE	N3-C12-C2-O2
3	B	374	OAE	N3-C12-C2-O2
3	D	374	OAE	N3-C12-C2-O2
3	A	376	OAE	N1-C3-C4-N2
3	D	374	OAE	N1-C3-C4-N2

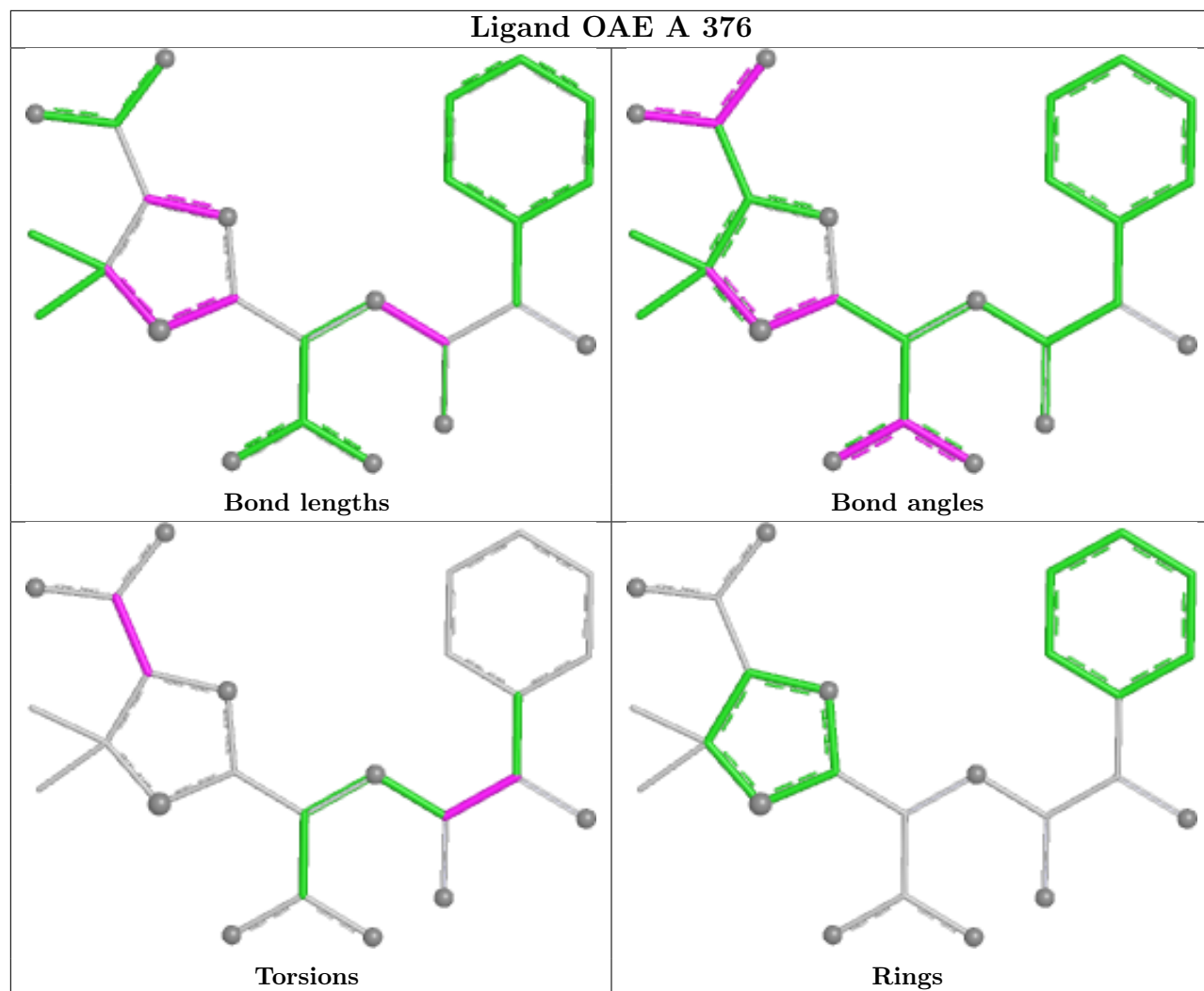
There are no ring outliers.

2 monomers are involved in 2 short contacts:

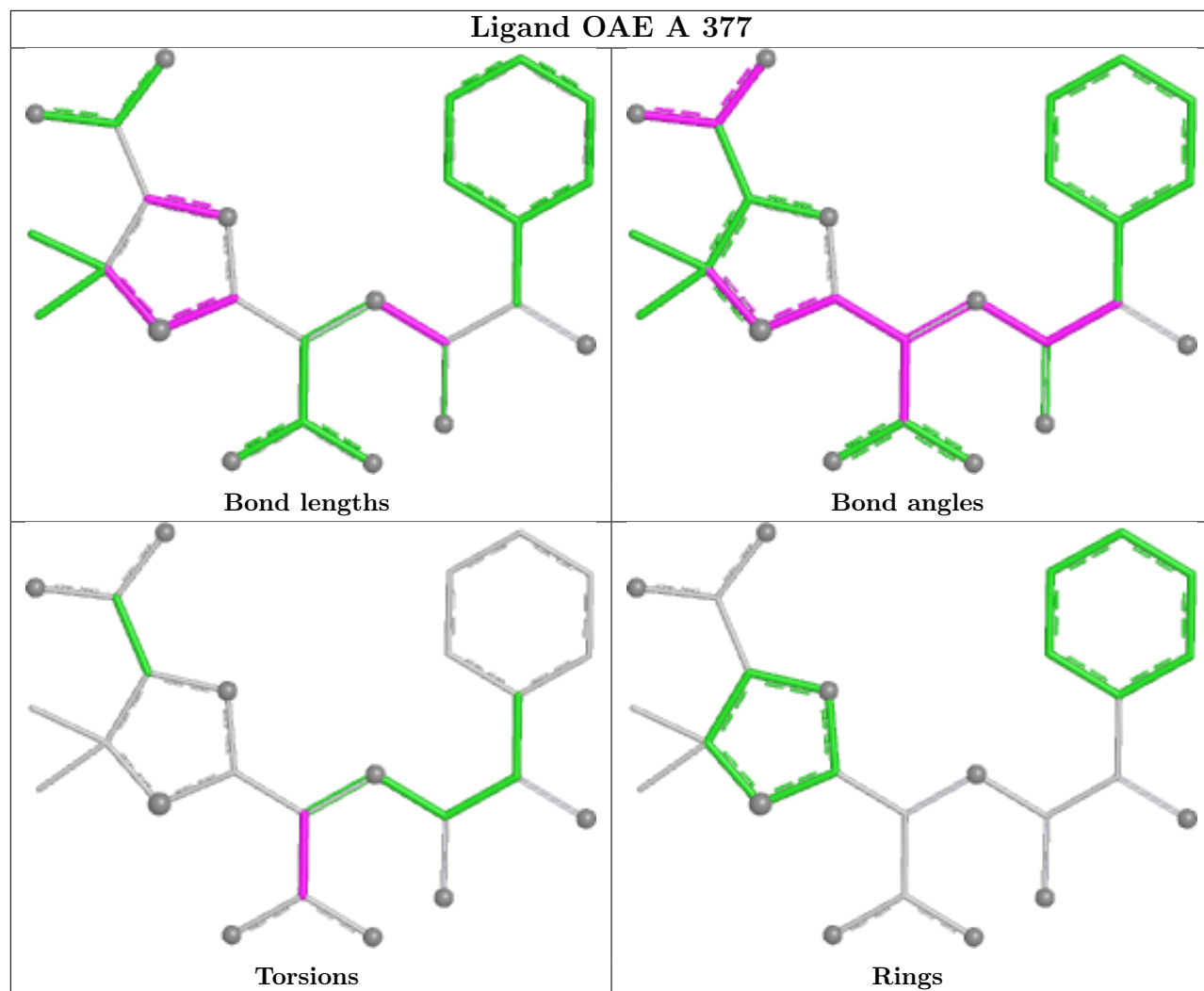
Mol	Chain	Res	Type	Clashes	Symm-Clashes
2	C	374	GOL	1	0
2	A	374	GOL	1	0

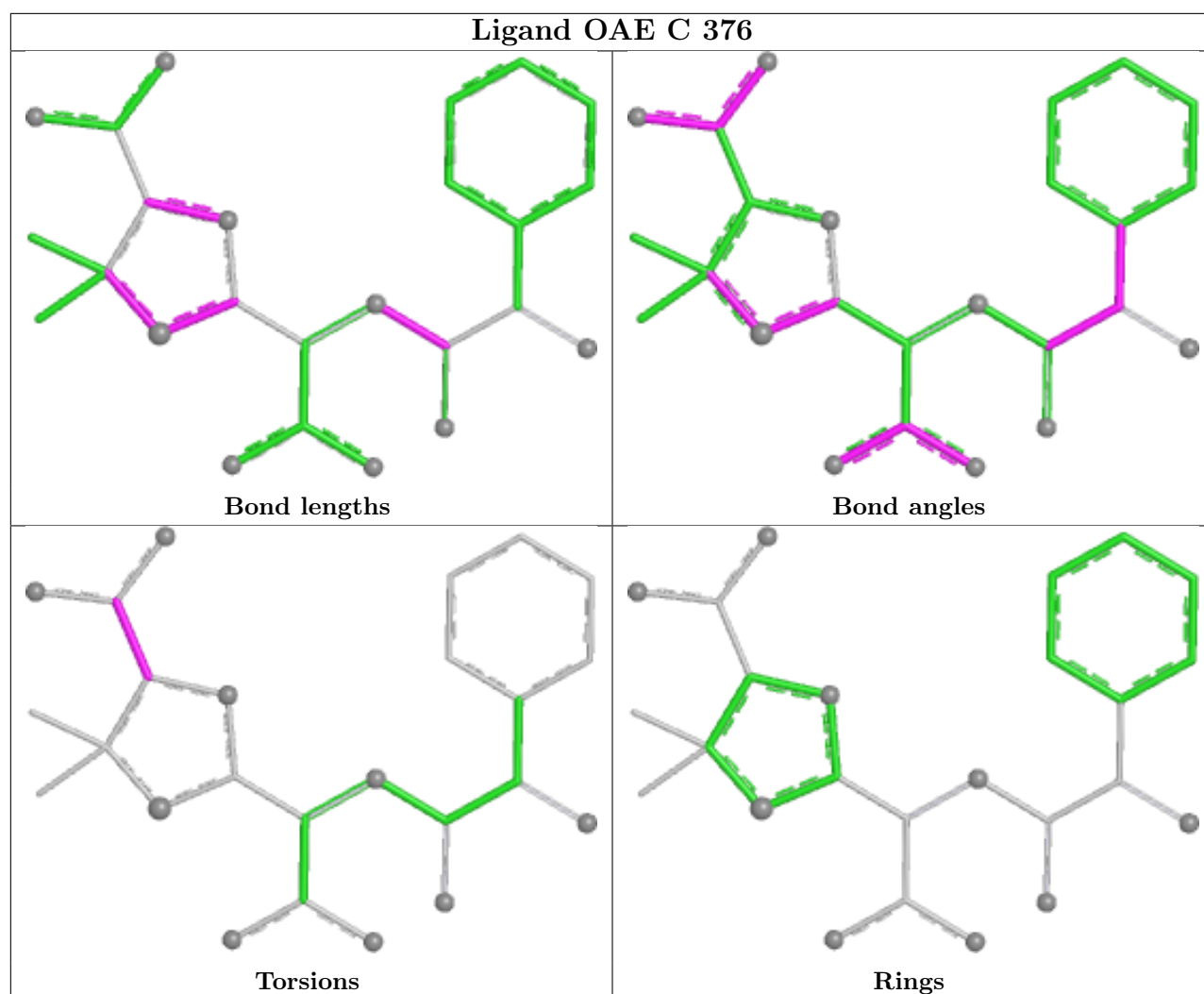
The following is a two-dimensional graphical depiction of Mogul quality analysis of bond lengths, bond angles, torsion angles, and ring geometry for all instances of the Ligand of Interest. In addition, ligands with molecular weight > 250 and outliers as shown on the validation Tables will also be included. For torsion angles, if less than 5% of the Mogul distribution of torsion angles is within 10 degrees of the torsion angle in question, then that torsion angle is considered an outlier. Any bond that is central to one or more torsion angles identified as an outlier by Mogul will be highlighted in the graph. For rings, the root-mean-square deviation (RMSD) between the ring in question and similar rings identified by Mogul is calculated over all ring torsion angles. If the average RMSD is greater than 60 degrees and the minimal RMSD between the ring in question and any Mogul-identified rings is also greater than 60 degrees, then that ring is considered an outlier. The outliers are highlighted in purple. The color gray indicates Mogul did not find sufficient equivalents in the CSD to analyse the geometry.

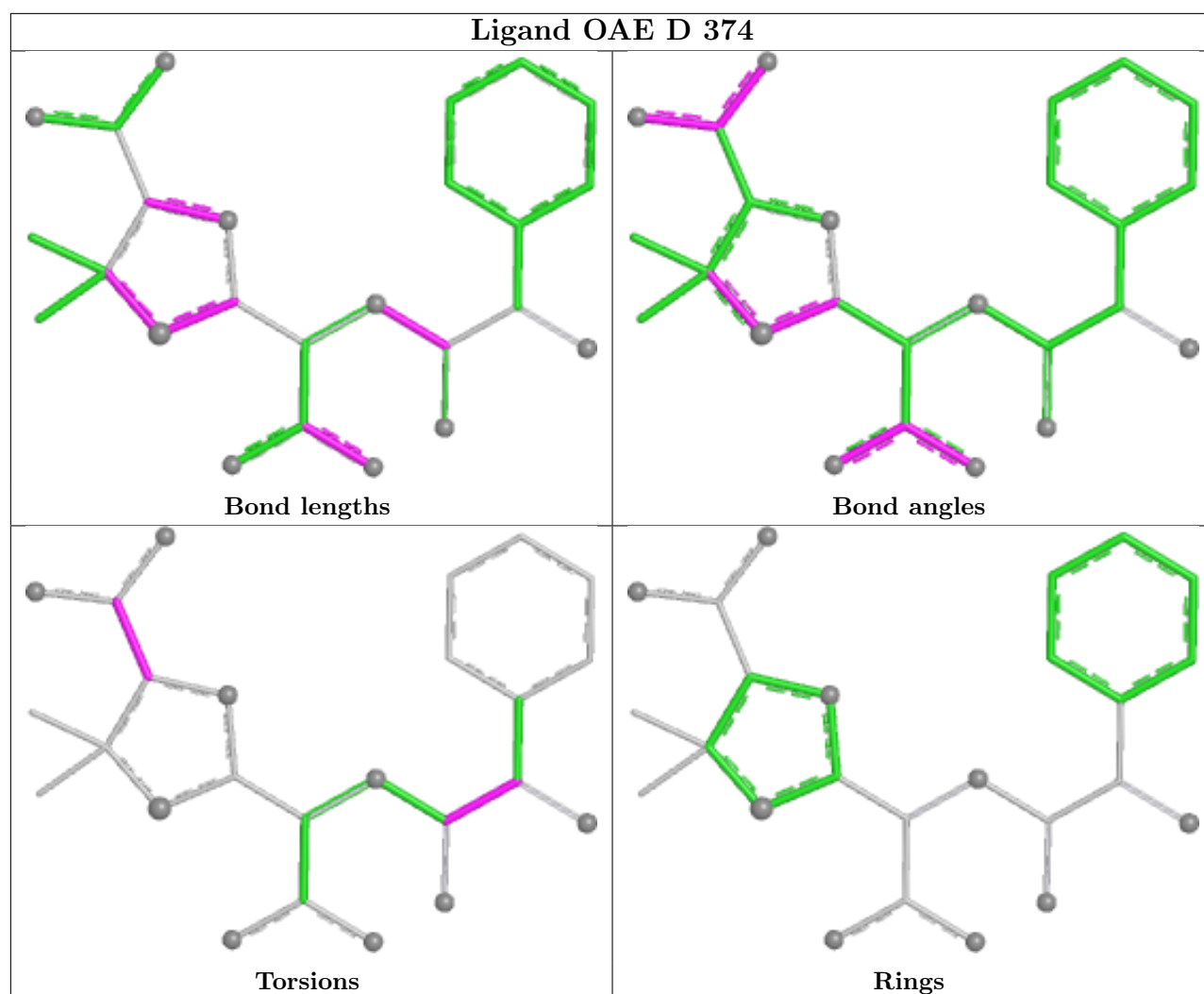
Ligand OAE A 376



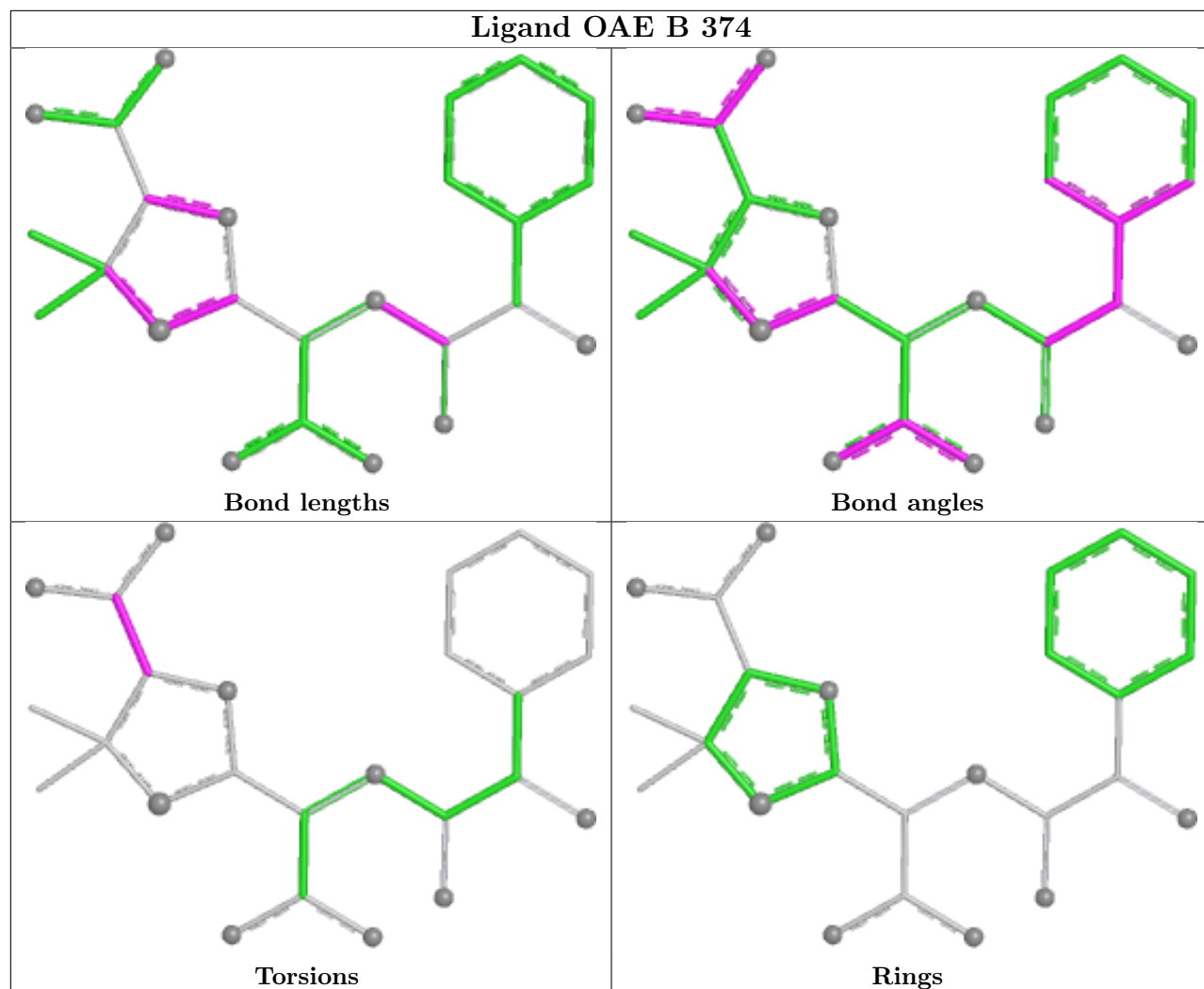
Ligand OAE A 377

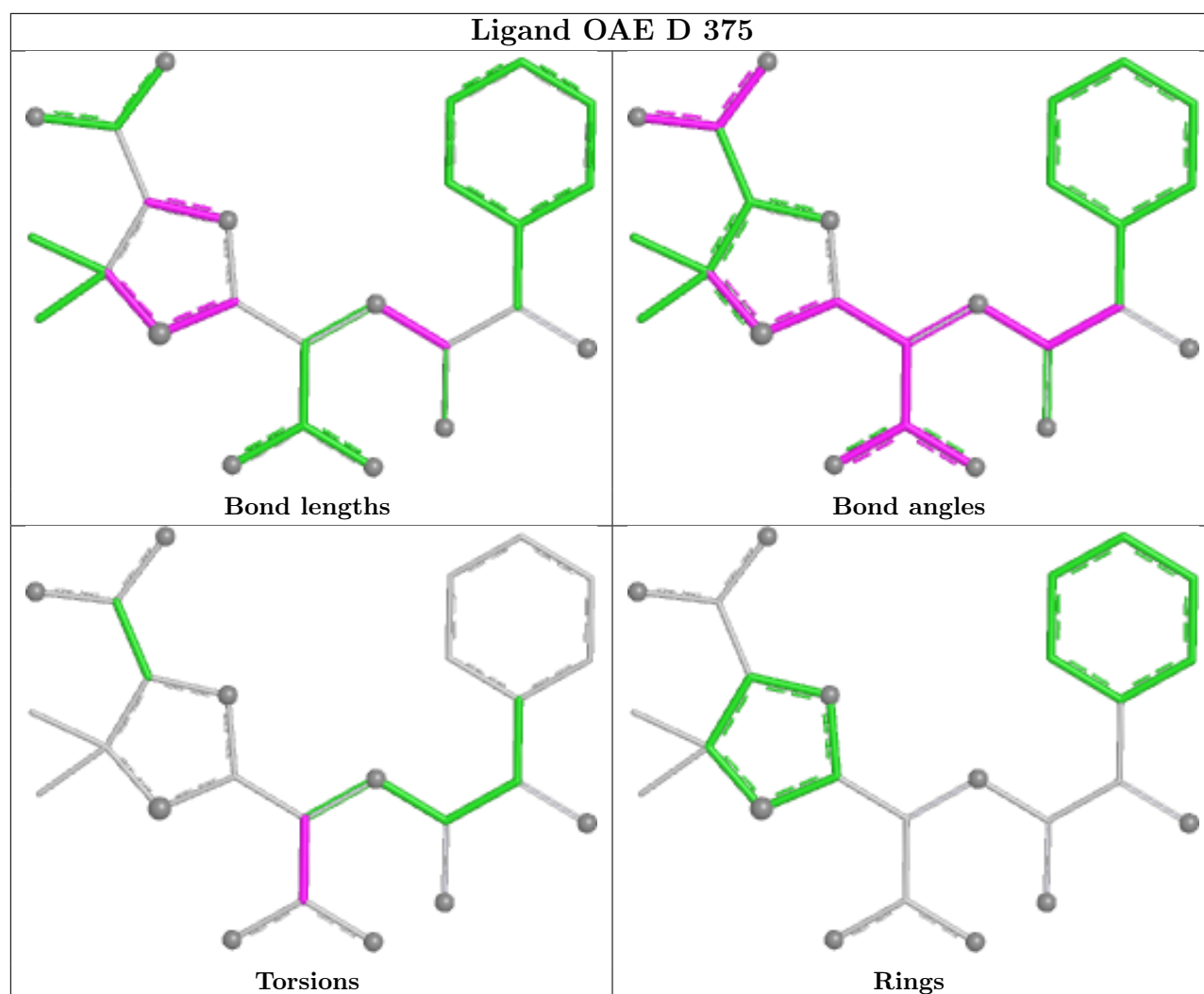






Ligand OAE B 374





5.7 Other polymers [i](#)

There are no such residues in this entry.

5.8 Polymer linkage issues [i](#)

There are no chain breaks in this entry.

6 Fit of model and data [i](#)

6.1 Protein, DNA and RNA chains [i](#)

In the following table, the column labelled ‘#RSRZ > 2’ contains the number (and percentage) of RSRZ outliers, followed by percent RSRZ outliers for the chain as percentile scores relative to all X-ray entries and entries of similar resolution. The OWAB column contains the minimum, median, 95th percentile and maximum values of the occupancy-weighted average B-factor per residue. The column labelled ‘Q < 0.9’ lists the number of (and percentage) of residues with an average occupancy less than 0.9.

Mol	Chain	Analysed	<RSRZ>	#RSRZ>2	OWAB(Å ²)	Q<0.9
1	A	367/373 (98%)	-0.47	8 (2%) 62 66	10, 15, 37, 65	6 (1%)
1	B	364/373 (97%)	-0.43	7 (1%) 66 70	11, 16, 39, 60	2 (0%)
1	C	366/373 (98%)	-0.39	12 (3%) 49 53	10, 16, 40, 66	2 (0%)
1	D	364/373 (97%)	-0.48	7 (1%) 66 70	10, 16, 37, 60	2 (0%)
All	All	1461/1492 (97%)	-0.44	34 (2%) 61 64	10, 16, 39, 66	12 (0%)

All (34) RSRZ outliers are listed below:

Mol	Chain	Res	Type	RSRZ
1	B	242	ALA	5.5
1	A	195	ASP	3.8
1	C	233	ASN	3.6
1	B	235	ILE	3.2
1	A	245	PRO	3.2
1	C	243	GLY	3.2
1	D	195	ASP	3.2
1	C	242	ALA	3.1
1	C	244	LYS	3.0
1	D	235	ILE	3.0
1	C	235	ILE	2.9
1	C	195	ASP	2.8
1	D	193	ALA	2.8
1	A	232	VAL	2.7
1	B	233	ASN	2.7
1	D	232	VAL	2.6
1	A	235	ILE	2.6
1	A	244	LYS	2.6
1	C	232	VAL	2.5
1	C	240	PRO	2.5
1	D	244	LYS	2.5

Continued on next page...

Continued from previous page...

Mol	Chain	Res	Type	RSRZ
1	B	195	ASP	2.4
1	B	371	PRO	2.4
1	B	236	VAL	2.4
1	B	239	GLY	2.4
1	A	371	PRO	2.3
1	C	121	GLU	2.3
1	A	193	ALA	2.2
1	C	236	VAL	2.2
1	D	371	PRO	2.2
1	A	233	ASN	2.1
1	C	234	GLY	2.1
1	D	121	GLU	2.1
1	C	241	ASP	2.1

6.2 Non-standard residues in protein, DNA, RNA chains [i](#)

There are no non-standard protein/DNA/RNA residues in this entry.

6.3 Carbohydrates [i](#)

There are no oligosaccharides in this entry.

6.4 Ligands [i](#)

In the following table, the Atoms column lists the number of modelled atoms in the group and the number defined in the chemical component dictionary. The B-factors column lists the minimum, median, 95th percentile and maximum values of B factors of atoms in the group. The column labelled 'Q< 0.9' lists the number of atoms with occupancy less than 0.9.

Mol	Type	Chain	Res	Atoms	RSCC	RSR	B-factors(\AA^2)	Q<0.9
3	OAE	A	377	25/25	0.87	0.13	31,37,41,45	25
3	OAE	D	375	25/25	0.88	0.14	30,36,41,44	25
2	GOL	C	375	6/6	0.92	0.10	21,21,23,23	0
2	GOL	A	375	6/6	0.93	0.09	18,22,23,24	0
2	GOL	A	374	6/6	0.93	0.09	18,19,21,22	0
2	GOL	C	374	6/6	0.95	0.09	18,18,23,23	0
3	OAE	B	374	25/25	0.95	0.08	11,17,34,41	0
3	OAE	A	376	25/25	0.95	0.07	13,17,32,38	0
4	SO4	A	378	5/5	0.95	0.08	20,24,24,26	5
4	SO4	C	377	5/5	0.95	0.09	19,23,25,28	5

Continued on next page...

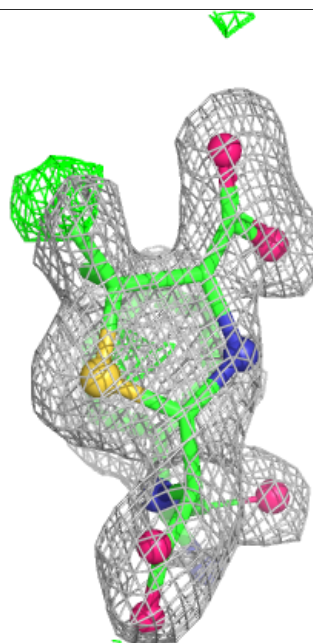
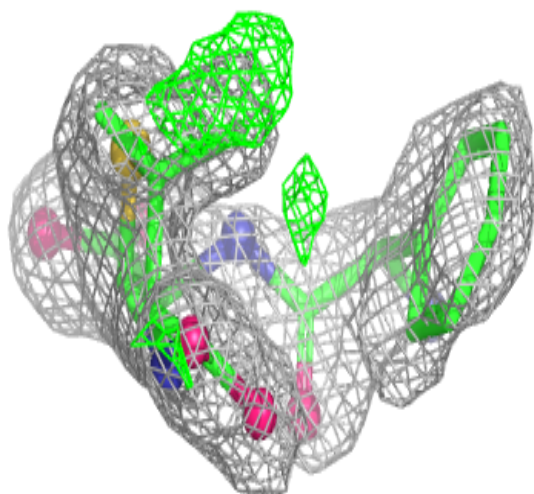
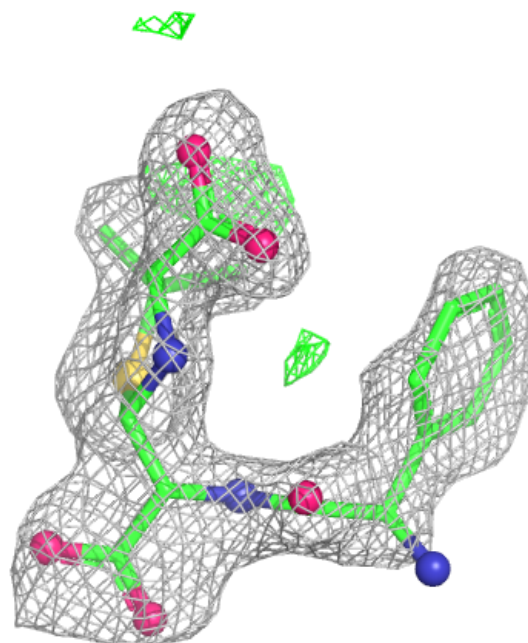
Continued from previous page...

Mol	Type	Chain	Res	Atoms	RSCC	RSR	B-factors(\AA^2)	Q<0.9
3	OAE	D	374	25/25	0.96	0.07	13,19,35,39	0
3	OAE	C	376	25/25	0.96	0.07	12,17,35,40	0
4	SO4	D	376	5/5	0.97	0.08	20,23,26,30	5
4	SO4	B	375	5/5	0.98	0.06	18,20,25,31	5

The following is a graphical depiction of the model fit to experimental electron density of all instances of the Ligand of Interest. In addition, ligands with molecular weight > 250 and outliers as shown on the geometry validation Tables will also be included. Each fit is shown from different orientation to approximate a three-dimensional view.

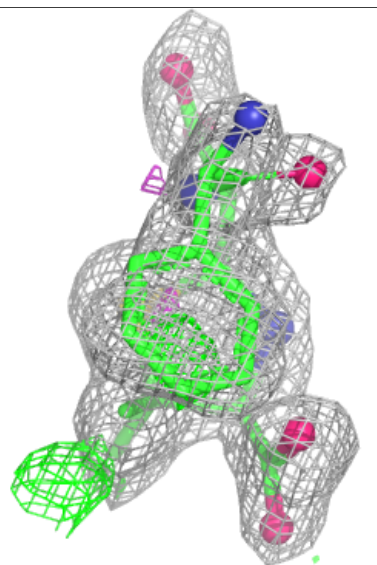
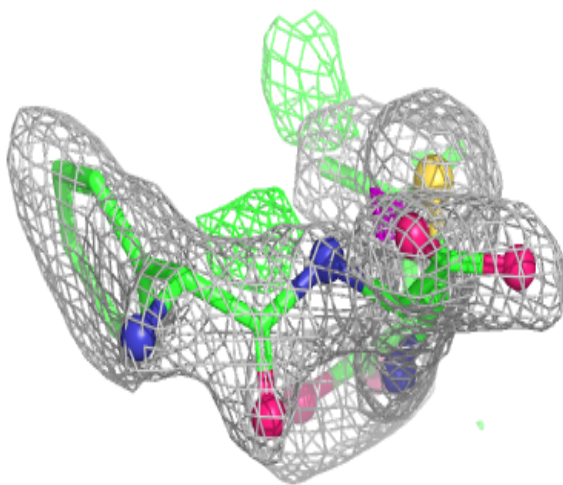
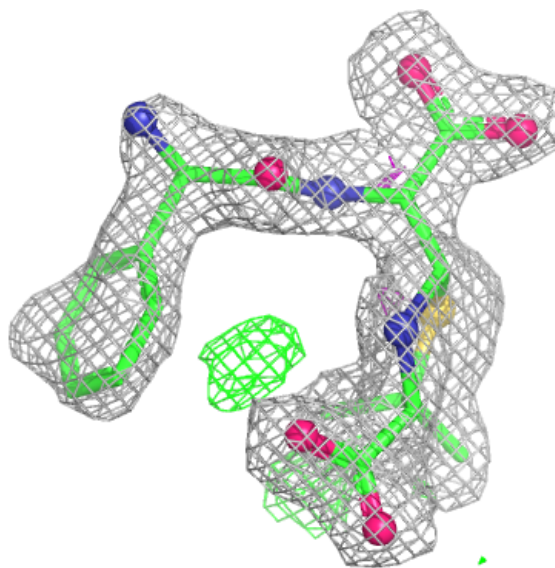
Electron density around OAE A 377:

2mF_o-DF_c (at 0.7 rmsd) in gray
mF_o-DF_c (at 3 rmsd) in purple (negative)
and green (positive)



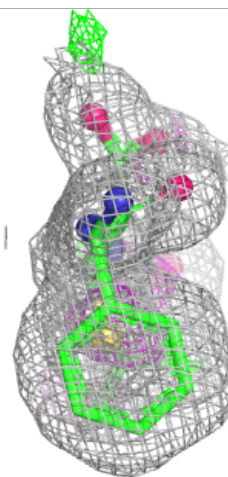
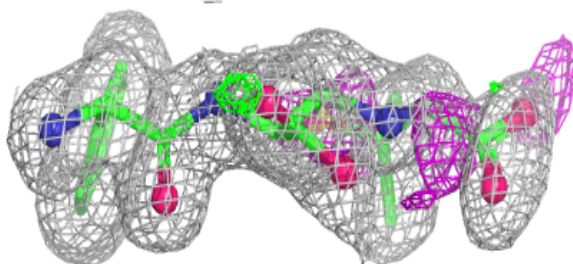
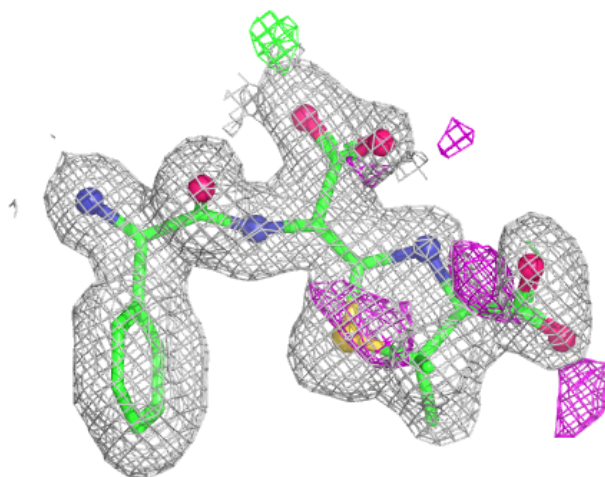
Electron density around OAE D 375:

$2mF_o-DF_c$ (at 0.7 rmsd) in gray
 mF_o-DF_c (at 3 rmsd) in purple (negative)
and green (positive)



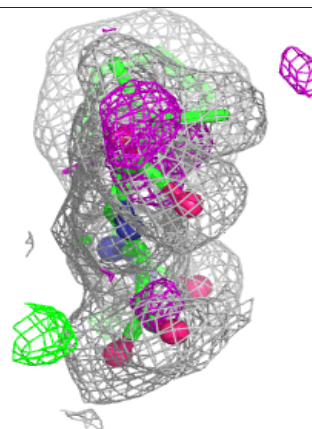
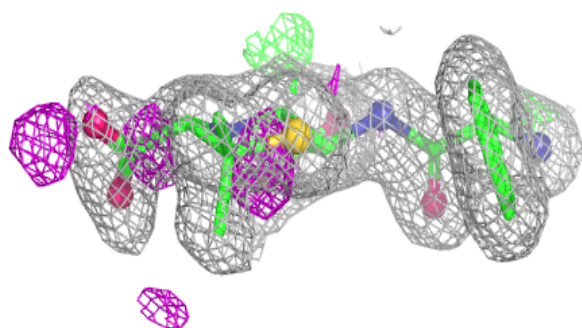
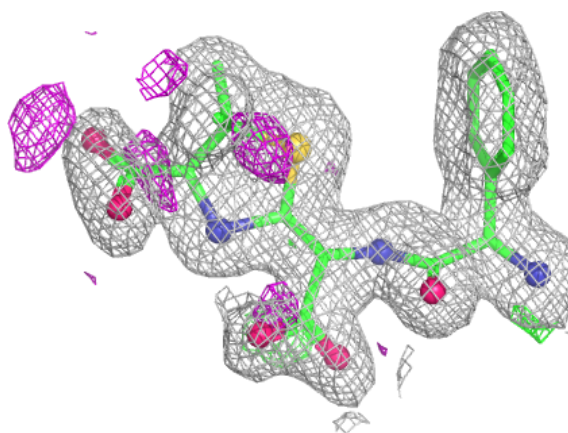
Electron density around OAE B 374:

$2mF_o-DF_c$ (at 0.7 rmsd) in gray
 mF_o-DF_c (at 3 rmsd) in purple (negative)
and green (positive)



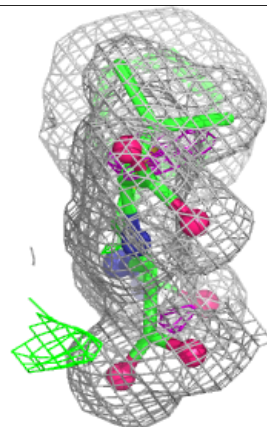
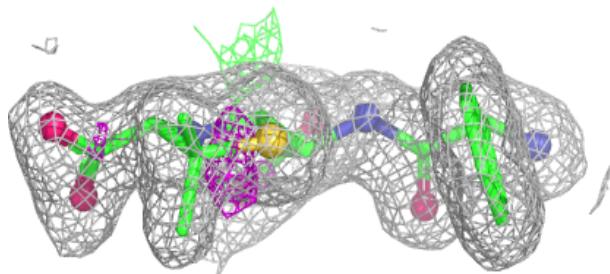
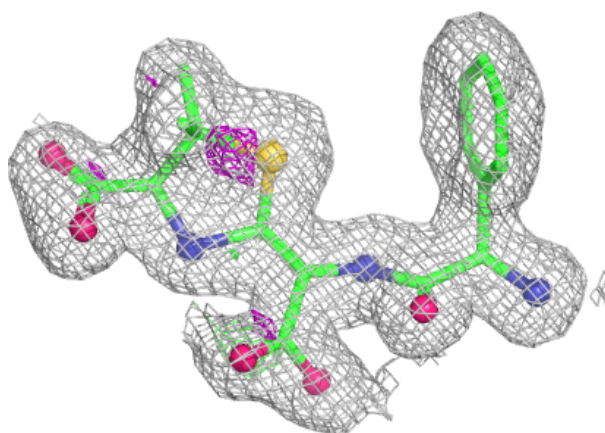
Electron density around OAE A 376:

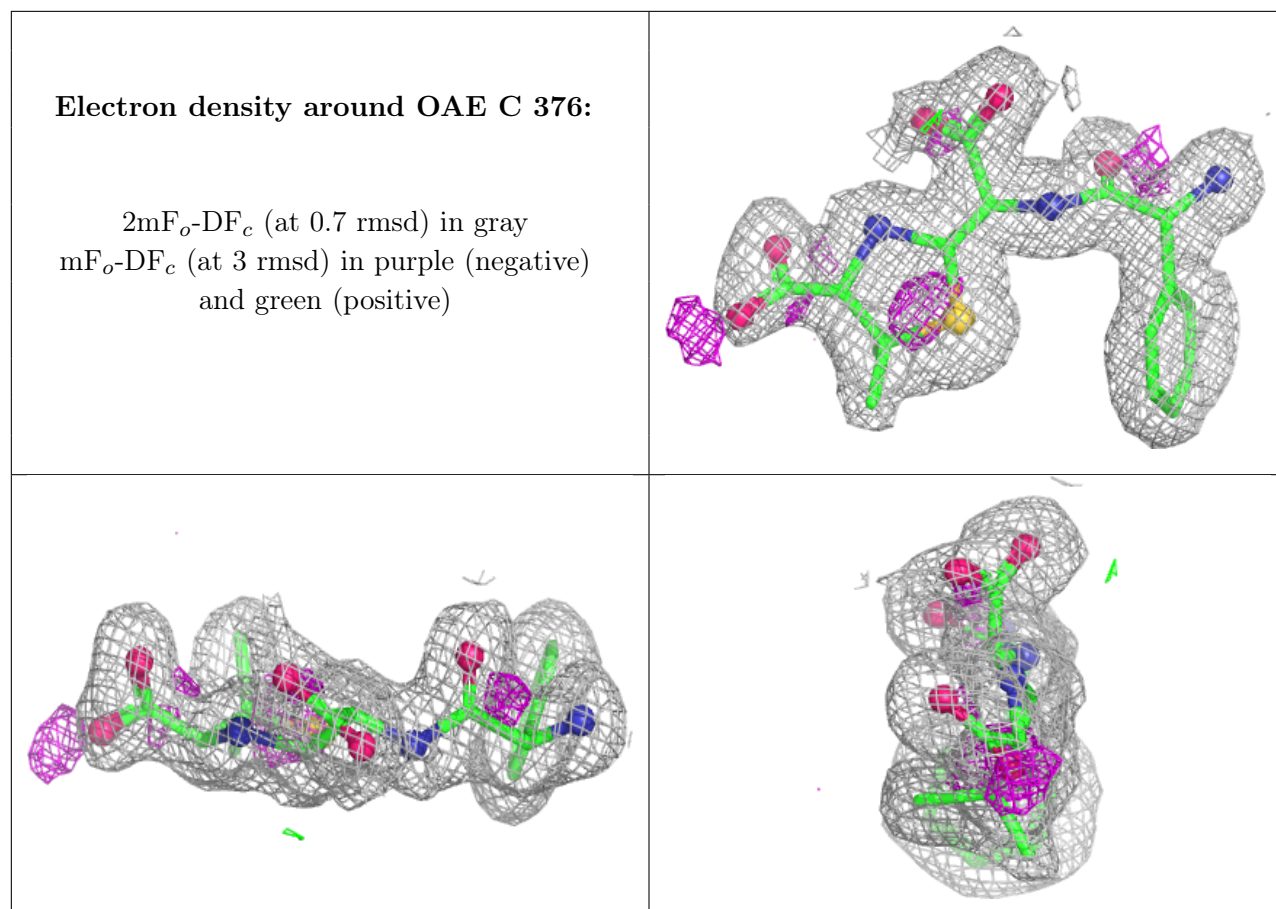
$2mF_o-DF_c$ (at 0.7 rmsd) in gray
 mF_o-DF_c (at 3 rmsd) in purple (negative)
and green (positive)



Electron density around OAE D 374:

$2mF_o-DF_c$ (at 0.7 rmsd) in gray
 mF_o-DF_c (at 3 rmsd) in purple (negative)
and green (positive)





6.5 Other polymers ⓘ

There are no such residues in this entry.