



Full wwPDB X-ray Structure Validation Report ⓘ

Mar 6, 2026 – 06:11 PM UTC

PDB ID : 3NU0 / pdb_00003nu0
Title : Design, Synthesis, Biological Evaluation and X-ray Crystal Structure of Novel Classical 6,5,6-TricyclicBenzo[4,5]thieno[2,3-d]pyrimidines as Dual Thymidylate Synthase and Dihydrofolate Reductase Inhibitors
Authors : Cody, V.
Deposited on : 2010-07-06
Resolution : 1.35 Å(reported)

This is a Full wwPDB X-ray Structure Validation Report for a publicly released PDB entry.

We welcome your comments at validation@mail.wwpdb.org

A user guide is available at

<https://www.wwpdb.org/validation/2017/XrayValidationReportHelp>

with specific help available everywhere you see the ⓘ symbol.

The types of validation reports are described at

<http://www.wwpdb.org/validation/2017/FAQs#types>.

The following versions of software and data (see [references ⓘ](#)) were used in the production of this report:

MolProbity	:	4-5-2 with Phenix2.0
Mogul	:	2022.3.0, CSD as543be (2022)
Xtriage (Phenix)	:	2.0
EDS	:	3.0
Buster-report	:	wwPDB partial adaption of 1.1.7 (2018)
Percentile statistics	:	20250101.v01 (using entries in the PDB archive January 1st 2025)
CCP4	:	9.0.010 (Gargrove)
Density-Fitness	:	1.0.12
Ideal geometry (proteins)	:	Engh & Huber (2001)
Ideal geometry (DNA, RNA)	:	Parkinson et al. (1996)
Validation Pipeline (wwPDB-VP)	:	2.49

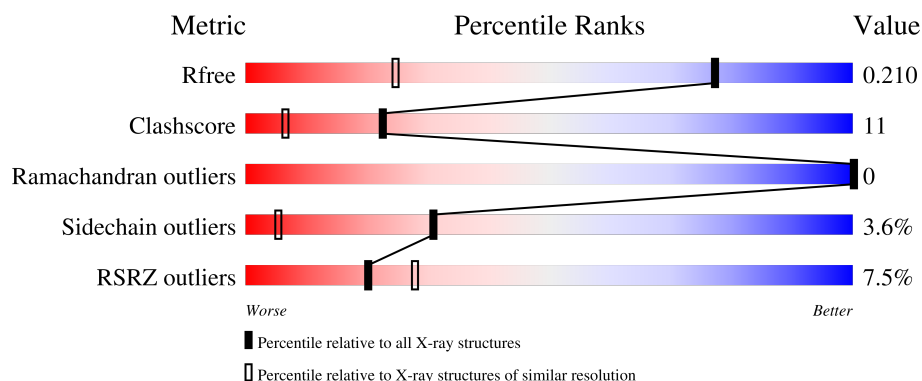
1 Overall quality at a glance

The following experimental techniques were used to determine the structure:

X-RAY DIFFRACTION

The reported resolution of this entry is 1.35 Å.

Percentile scores (ranging between 0-100) for global validation metrics of the entry are shown in the following graphic. The table shows the number of entries on which the scores are based.



Metric	Whole archive (#Entries)	Similar resolution (#Entries, resolution range(Å))
R_{free}	180053	1216 (1.36-1.36)
Clashscore	190562	1232 (1.36-1.36)
Ramachandran outliers	187476	1220 (1.36-1.36)
Sidechain outliers	187428	1220 (1.36-1.36)
RSRZ outliers	180081	1214 (1.36-1.36)

The table below summarises the geometric issues observed across the polymeric chains and their fit to the electron density. The red, orange, yellow and green segments of the lower bar indicate the fraction of residues that contain outliers for ≥ 3 , 2, 1 and 0 types of geometric quality criteria respectively. A grey segment represents the fraction of residues that are not modelled. The numeric value for each fraction is indicated below the corresponding segment, with a dot representing fractions $\leq 5\%$. The upper red bar (where present) indicates the fraction of residues that have poor fit to the electron density. The numeric value is given above the bar.

Mol	Chain	Length	Quality of chain
1	A	186	<div> <div>8%</div> <div>76%</div> <div>20%</div> <div>.</div> </div>

2 Entry composition [i](#)

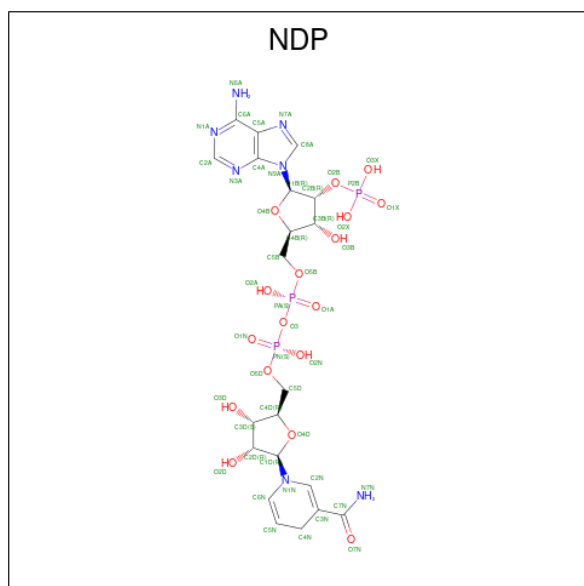
There are 5 unique types of molecules in this entry. The entry contains 1868 atoms, of which 0 are hydrogens and 0 are deuteriums.

In the tables below, the ZeroOcc column contains the number of atoms modelled with zero occupancy, the AltConf column contains the number of residues with at least one atom in alternate conformation and the Trace column contains the number of residues modelled with at most 2 atoms.

- Molecule 1 is a protein called Dihydrofolate reductase.

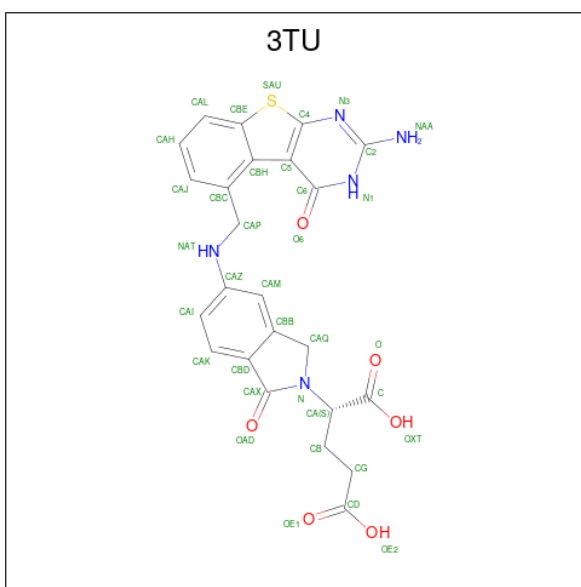
Mol	Chain	Residues	Atoms					ZeroOcc	AltConf	Trace
			Total	C	N	O	S			
1	A	186	1582	1010	266	297	9	0	10	0

- Molecule 2 is NADPH DIHYDRO-NICOTINAMIDE-ADENINE-DINUCLEOTIDE PHOSPHATE (CCD ID: NDP) (formula: $C_{21}H_{30}N_7O_{17}P_3$).



Mol	Chain	Residues	Atoms					ZeroOcc	AltConf
			Total	C	N	O	P		
2	A	1	48	21	7	17	3	0	0

- Molecule 3 is (2S)-2-(5-[[[(2-amino-4-oxo-3,4-dihydro[1]benzothieno[2,3-d]pyrimidin-5-yl)methyl]amino]-1-oxo-1,3-dihydro-2H-isoindol-2-yl]pentanedioic acid (CCD ID: 3TU) (formula: $C_{24}H_{21}N_5O_6S$).



Mol	Chain	Residues	Atoms					ZeroOcc	AltConf
3	A	1	Total	C	N	O	S	0	0
			36	24	5	6	1		

- Molecule 4 is SULFATE ION (CCD ID: SO4) (formula: O_4S).



Mol	Chain	Residues	Atoms			ZeroOcc	AltConf
4	A	1	Total 5	O 4	S 1	0	0
4	A	1	Total 5	O 4	S 1	0	0
4	A	1	Total 5	O 4	S 1	0	0

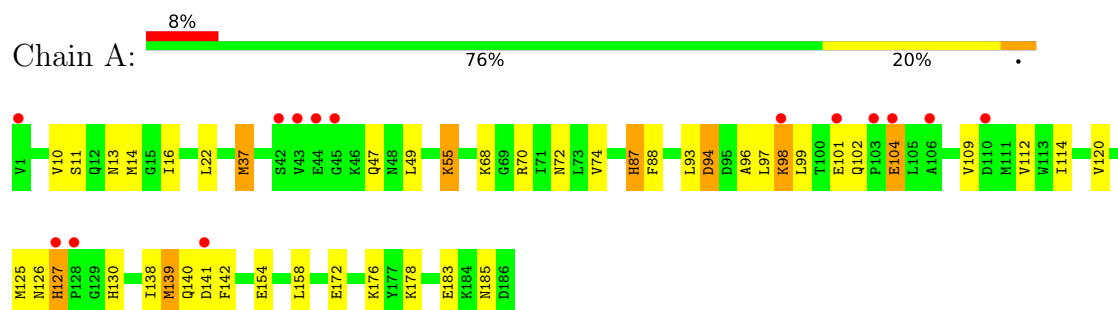
- Molecule 5 is water.

Mol	Chain	Residues	Atoms		ZeroOcc	AltConf
5	A	187	Total 187	O 187	0	0

3 Residue-property plots [i](#)

These plots are drawn for all protein, RNA, DNA and oligosaccharide chains in the entry. The first graphic for a chain summarises the proportions of the various outlier classes displayed in the second graphic. The second graphic shows the sequence view annotated by issues in geometry and electron density. Residues are color-coded according to the number of geometric quality criteria for which they contain at least one outlier: green = 0, yellow = 1, orange = 2 and red = 3 or more. A red dot above a residue indicates a poor fit to the electron density ($RSRZ > 2$). Stretches of 2 or more consecutive residues without any outlier are shown as a green connector. Residues present in the sample, but not in the model, are shown in grey.

- Molecule 1: Dihydrofolate reductase



4 Data and refinement statistics

Property	Value	Source
Space group	H 3	Depositor
Cell constants a, b, c, α , β , γ	84.39Å 84.39Å 78.19Å 90.00° 90.00° 120.00°	Depositor
Resolution (Å)	33.10 – 1.35 33.10 – 1.35	Depositor EDS
% Data completeness (in resolution range)	100.0 (33.10-1.35) 100.0 (33.10-1.35)	Depositor EDS
R_{merge}	0.06	Depositor
R_{sym}	0.07	Depositor
$\langle I/\sigma(I) \rangle$ ¹	6.55 (at 1.35Å)	Xtriage
Refinement program	REFMAC 5.5.0088	Depositor
R, R_{free}	0.180 , 0.209 0.179 , 0.210	Depositor DCC
R_{free} test set	2302 reflections (5.05%)	wwPDB-VP
Wilson B-factor (Å ²)	12.4	Xtriage
Anisotropy	0.007	Xtriage
Bulk solvent k_{sol} (e/Å ³), B_{sol} (Å ²)	0.37 , 37.5	EDS
L-test for twinning ²	$\langle L \rangle = 0.50$, $\langle L^2 \rangle = 0.33$	Xtriage
Estimated twinning fraction	0.021 for h,-h-k,-l	Xtriage
F_o, F_c correlation	0.96	EDS
Total number of atoms	1868	wwPDB-VP
Average B, all atoms (Å ²)	15.0	wwPDB-VP

Xtriage's analysis on translational NCS is as follows: *The largest off-origin peak in the Patterson function is 6.17% of the height of the origin peak. No significant pseudotranslation is detected.*

¹Intensities estimated from amplitudes.

²Theoretical values of $\langle |L| \rangle$, $\langle L^2 \rangle$ for acentric reflections are 0.5, 0.333 respectively for untwinned datasets, and 0.375, 0.2 for perfectly twinned datasets.

5 Model quality

5.1 Standard geometry

Bond lengths and bond angles in the following residue types are not validated in this section: NDP, 3TU, SO4

The Z score for a bond length (or angle) is the number of standard deviations the observed value is removed from the expected value. A bond length (or angle) with $|Z| > 5$ is considered an outlier worth inspection. RMSZ is the root-mean-square of all Z scores of the bond lengths (or angles).

Mol	Chain	Bond lengths		Bond angles	
		RMSZ	$\# Z > 5$	RMSZ	$\# Z > 5$
1	A	1.76	24/1617 (1.5%)	1.45	8/2180 (0.4%)

All (24) bond length outliers are listed below:

Mol	Chain	Res	Type	Atoms	Z	Observed(Å)	Ideal(Å)
1	A	37	MET	SD-CE	-12.78	1.47	1.79
1	A	55	LYS	CB-CG	-9.88	1.22	1.52
1	A	185	ASN	CA-C	-7.46	1.45	1.53
1	A	114	ILE	CG1-CD1	-7.39	1.23	1.51
1	A	96	ALA	CA-CB	6.51	1.63	1.53
1	A	87	HIS	CA-C	-6.07	1.45	1.52
1	A	109	VAL	CA-CB	-6.05	1.47	1.54
1	A	158	LEU	N-CA	6.00	1.53	1.46
1	A	55	LYS	CG-CD	-5.82	1.34	1.52
1	A	120	VAL	CB-CG1	-5.82	1.33	1.52
1	A	74	VAL	CA-C	-5.69	1.46	1.52
1	A	47	GLN	CB-CG	-5.67	1.35	1.52
1	A	87	HIS	CE1-NE2	5.65	1.38	1.32
1	A	172	GLU	N-CA	5.44	1.52	1.46
1	A	112	VAL	CA-CB	-5.39	1.48	1.54
1	A	139[A]	MET	CG-SD	5.34	1.94	1.80
1	A	139[B]	MET	CG-SD	5.34	1.94	1.80
1	A	114	ILE	C-O	-5.32	1.18	1.24
1	A	70	ARG	C-O	5.25	1.30	1.23
1	A	140	GLN	C-O	5.23	1.30	1.23
1	A	94	ASP	N-CA	5.16	1.52	1.46
1	A	109	VAL	CA-C	5.12	1.58	1.52
1	A	109	VAL	N-CA	5.07	1.52	1.46
1	A	125	MET	SD-CE	-5.02	1.67	1.79

All (8) bond angle outliers are listed below:

Mol	Chain	Res	Type	Atoms	Z	Observed(°)	Ideal(°)
1	A	55	LYS	CB-CG-CD	-13.08	81.22	111.30
1	A	37	MET	CG-SD-CE	-11.25	76.15	100.90
1	A	125	MET	CG-SD-CE	-8.92	81.28	100.90
1	A	55	LYS	CG-CD-CE	-6.38	96.62	111.30
1	A	127	HIS	N-CA-C	-6.00	98.58	109.44
1	A	93	LEU	O-C-N	5.83	128.30	122.12
1	A	49	LEU	CB-CG-CD1	-5.61	93.88	110.70
1	A	88	PHE	CA-C-O	-5.40	115.30	121.40

There are no chirality outliers.

There are no planarity outliers.

5.2 Too-close contacts [i](#)

In the following table, the Non-H and H(model) columns list the number of non-hydrogen atoms and hydrogen atoms in the chain respectively. The H(added) column lists the number of hydrogen atoms added and optimized by MolProbity. The Clashes column lists the number of clashes within the asymmetric unit, whereas Symm-Clashes lists symmetry-related clashes.

Mol	Chain	Non-H	H(model)	H(added)	Clashes	Symm-Clashes
1	A	1582	0	1577	33	2
2	A	48	0	26	2	0
3	A	36	0	19	3	0
4	A	15	0	0	0	0
5	A	187	0	0	12	2
All	All	1868	0	1622	35	2

The all-atom clashscore is defined as the number of clashes found per 1000 atoms (including hydrogen atoms). The all-atom clashscore for this structure is 11.

All (35) close contacts within the same asymmetric unit are listed below, sorted by their clash magnitude.

Atom-1	Atom-2	Interatomic distance (Å)	Clash overlap (Å)
1:A:14[B]:MET:CE	5:A:343:HOH:O	1.69	1.31
1:A:14[B]:MET:HE2	5:A:343:HOH:O	1.24	1.26
1:A:127:HIS:HB3	5:A:357:HOH:O	1.47	1.11
1:A:126[B]:ASN:OD1	5:A:225:HOH:O	1.83	0.97
1:A:126[B]:ASN:OD1	5:A:266:HOH:O	1.84	0.93
1:A:72:ASN:H	1:A:87:HIS:HD2	1.15	0.91
1:A:130:HIS:HE1	1:A:183:GLU:OE1	1.61	0.83

Continued on next page...

Continued from previous page...

Atom-1	Atom-2	Interatomic distance (Å)	Clash overlap (Å)
1:A:94:ASP:O	1:A:98:LYS:HD2	1.82	0.80
1:A:14[B]:MET:HE1	5:A:343:HOH:O	1.53	0.76
1:A:72:ASN:H	1:A:87:HIS:CD2	2.02	0.75
1:A:126[B]:ASN:CG	5:A:225:HOH:O	2.32	0.69
1:A:102:GLN:HB2	5:A:278:HOH:O	1.93	0.69
1:A:104:GLU:OE2	5:A:329:HOH:O	2.13	0.66
1:A:14[A]:MET:SD	5:A:343:HOH:O	2.52	0.62
1:A:14[A]:MET:HA	1:A:14[A]:MET:HE2	1.85	0.58
1:A:154[A]:GLU:O	1:A:154[A]:GLU:HG3	2.02	0.58
1:A:139[B]:MET:HG2	1:A:176:LYS:O	2.04	0.56
1:A:130:HIS:CE1	1:A:183:GLU:OE1	2.52	0.53
1:A:13:ASN:CG	1:A:141[B]:ASP:OD1	2.53	0.52
1:A:72:ASN:N	1:A:87:HIS:HD2	1.96	0.51
1:A:10[B]:VAL:CG1	1:A:14[B]:MET:HA	2.41	0.51
1:A:16:ILE:O	2:A:187:NDP:H2N	2.11	0.50
1:A:10[B]:VAL:HG22	1:A:16:ILE:HG22	1.95	0.49
1:A:22:LEU:HD11	3:A:188:3TU:HAP	1.97	0.47
1:A:97:LEU:HB2	1:A:98:LYS:HE2	1.97	0.46
1:A:94:ASP:O	1:A:98:LYS:CD	2.56	0.46
1:A:139[A]:MET:HE1	5:A:332:HOH:O	2.15	0.46
1:A:11:SER:HA	1:A:138[A]:ILE:HB	1.98	0.44
1:A:139[B]:MET:HG2	1:A:139[B]:MET:H	1.55	0.44
1:A:139[A]:MET:CE	5:A:332:HOH:O	2.65	0.43
1:A:37:MET:HB3	1:A:37:MET:HE3	1.68	0.43
1:A:141[B]:ASP:OD1	1:A:142:PHE:N	2.50	0.43
2:A:187:NDP:H42N	3:A:188:3TU:CBE	2.49	0.43
1:A:10[B]:VAL:HG12	1:A:14[B]:MET:HA	2.01	0.41
3:A:188:3TU:HAPA	3:A:188:3TU:O6	2.20	0.40

All (2) symmetry-related close contacts are listed below. The label for Atom-2 includes the symmetry operator and encoded unit-cell translations to be applied.

Atom-1	Atom-2	Interatomic distance (Å)	Clash overlap (Å)
1:A:178:LYS:NZ	5:A:295:HOH:O[8_444]	1.49	0.71
1:A:178:LYS:CE	5:A:295:HOH:O[8_444]	1.73	0.47

5.3 Torsion angles

5.3.1 Protein backbone

In the following table, the Percentiles column shows the percent Ramachandran outliers of the chain as a percentile score with respect to all X-ray entries followed by that with respect to entries of similar resolution.

The Analysed column shows the number of residues for which the backbone conformation was analysed, and the total number of residues.

Mol	Chain	Analysed	Favoured	Allowed	Outliers	Percentiles	
1	A	194/186 (104%)	190 (98%)	4 (2%)	0	100	100

There are no Ramachandran outliers to report.

5.3.2 Protein sidechains

In the following table, the Percentiles column shows the percent sidechain outliers of the chain as a percentile score with respect to all X-ray entries followed by that with respect to entries of similar resolution.

The Analysed column shows the number of residues for which the sidechain conformation was analysed, and the total number of residues.

Mol	Chain	Analysed	Rotameric	Outliers	Percentiles	
1	A	178/168 (106%)	172 (97%)	6 (3%)	32	6

All (6) residues with a non-rotameric sidechain are listed below:

Mol	Chain	Res	Type
1	A	55	LYS
1	A	68	LYS
1	A	98	LYS
1	A	99	LEU
1	A	101	GLU
1	A	104	GLU

Sometimes sidechains can be flipped to improve hydrogen bonding and reduce clashes. All (4) such sidechains are listed below:

Mol	Chain	Res	Type
1	A	47	GLN
1	A	87	HIS

Continued on next page...

Continued from previous page...

Mol	Chain	Res	Type
1	A	130	HIS
1	A	185	ASN

5.3.3 RNA ⓘ

There are no RNA molecules in this entry.

5.4 Non-standard residues in protein, DNA, RNA chains ⓘ

There are no non-standard protein/DNA/RNA residues in this entry.

5.5 Carbohydrates ⓘ

There are no oligosaccharides in this entry.

5.6 Ligand geometry ⓘ

5 ligands are modelled in this entry.

In the following table, the Counts columns list the number of bonds (or angles) for which Mogul statistics could be retrieved, the number of bonds (or angles) that are observed in the model and the number of bonds (or angles) that are defined in the Chemical Component Dictionary. The Link column lists molecule types, if any, to which the group is linked. The Z score for a bond length (or angle) is the number of standard deviations the observed value is removed from the expected value. A bond length (or angle) with $|Z| > 2$ is considered an outlier worth inspection. RMSZ is the root-mean-square of all Z scores of the bond lengths (or angles).

Mol	Type	Chain	Res	Link	Bond lengths			Bond angles		
					Counts	RMSZ	$\# Z > 2$	Counts	RMSZ	$\# Z > 2$
4	SO4	A	190	-	4,4,4	0.52	0	6,6,6	0.91	0
4	SO4	A	189	-	4,4,4	0.74	0	6,6,6	1.79	2 (33%)
4	SO4	A	191	-	4,4,4	0.46	0	6,6,6	0.65	0
3	3TU	A	188	-	40,40,40	2.44	12 (30%)	52,59,59	3.09	26 (50%)
2	NDP	A	187	-	51,52,52	1.87	17 (33%)	71,80,80	1.74	16 (22%)

In the following table, the Chirals column lists the number of chiral outliers, the number of chiral centers analysed, the number of these observed in the model and the number defined in the Chemical Component Dictionary. Similar counts are reported in the Torsion and Rings columns. '-' means no outliers of that kind were identified.

Mol	Type	Chain	Res	Link	Chirals	Torsions	Rings
2	NDP	A	187	-	-	2/34/77/77	0/5/5/5
3	3TU	A	188	-	-	5/18/30/30	0/5/5/5

All (29) bond length outliers are listed below:

Mol	Chain	Res	Type	Atoms	Z	Observed(Å)	Ideal(Å)
3	A	188	3TU	C4-SAU	-6.01	1.67	1.75
3	A	188	3TU	O6-C6	5.51	1.34	1.23
2	A	187	NDP	PA-O3	5.32	1.65	1.59
3	A	188	3TU	C5-C4	5.29	1.44	1.38
3	A	188	3TU	CBD-CAX	-4.91	1.40	1.48
2	A	187	NDP	C4N-C3N	-4.46	1.41	1.50
3	A	188	3TU	CAX-N	-3.79	1.32	1.36
3	A	188	3TU	CB-CA	-3.76	1.47	1.53
3	A	188	3TU	CAQ-CBB	-3.19	1.46	1.50
3	A	188	3TU	CA-N	2.95	1.49	1.46
2	A	187	NDP	PA-O1A	-2.84	1.41	1.50
2	A	187	NDP	PA-O2A	-2.81	1.42	1.55
2	A	187	NDP	C4A-N9A	-2.78	1.31	1.37
2	A	187	NDP	P2B-O2B	2.59	1.64	1.59
2	A	187	NDP	C5D-C4D	2.58	1.59	1.51
3	A	188	3TU	CG-CD	2.57	1.56	1.50
2	A	187	NDP	PN-O5D	-2.57	1.49	1.59
3	A	188	3TU	CAH-CAL	2.53	1.43	1.38
2	A	187	NDP	O4D-C4D	2.53	1.50	1.45
2	A	187	NDP	PN-O2N	-2.51	1.43	1.55
2	A	187	NDP	C2B-C1B	-2.44	1.47	1.53
2	A	187	NDP	O4B-C1B	2.40	1.47	1.42
2	A	187	NDP	P2B-O2X	-2.34	1.46	1.54
3	A	188	3TU	CBH-CBC	2.33	1.45	1.41
3	A	188	3TU	CAM-CBB	2.32	1.43	1.39
2	A	187	NDP	O4D-C1D	-2.30	1.36	1.42
2	A	187	NDP	C3D-C4D	-2.20	1.47	1.53
2	A	187	NDP	O2B-C2B	-2.10	1.36	1.44
2	A	187	NDP	P2B-O3X	-2.10	1.47	1.54

All (44) bond angle outliers are listed below:

Mol	Chain	Res	Type	Atoms	Z	Observed(°)	Ideal(°)
3	A	188	3TU	CAQ-N-CAX	-8.84	109.42	113.15
3	A	188	3TU	CBD-CAX-N	8.57	111.87	106.42
3	A	188	3TU	CA-N-CAX	5.95	130.94	121.86
3	A	188	3TU	OAD-CAX-N	-5.46	121.00	125.34

Continued on next page...

Continued from previous page...

Mol	Chain	Res	Type	Atoms	Z	Observed(°)	Ideal(°)
2	A	187	NDP	C6N-N1N-C2N	5.17	124.85	119.32
3	A	188	3TU	CAQ-N-CA	-4.96	118.96	123.68
2	A	187	NDP	N9A-C8A-N7A	-4.94	106.93	113.94
3	A	188	3TU	CBB-CBD-CAX	-4.79	106.34	108.94
3	A	188	3TU	C5-C4-SAU	4.73	113.93	111.19
3	A	188	3TU	O6-C6-N1	-4.26	112.11	120.11
3	A	188	3TU	CAH-CAL-CBE	-3.95	112.94	119.57
3	A	188	3TU	CAL-CBE-CBH	3.79	128.90	122.39
3	A	188	3TU	CB-CA-C	3.78	120.41	112.14
3	A	188	3TU	C5-C6-N1	3.65	120.89	116.41
3	A	188	3TU	CBH-C5-C6	3.56	136.46	130.67
3	A	188	3TU	CG-CB-CA	3.51	119.82	112.83
3	A	188	3TU	CAL-CBE-SAU	-3.44	119.24	127.36
2	A	187	NDP	C5A-C4A-N3A	-3.34	122.11	126.72
2	A	187	NDP	C6A-C5A-C4A	3.30	121.68	117.18
2	A	187	NDP	O4B-C1B-C2B	-3.29	100.93	106.59
3	A	188	3TU	CBE-SAU-C4	3.28	91.09	88.92
2	A	187	NDP	C3N-C2N-N1N	-3.04	118.74	123.20
2	A	187	NDP	C4A-N9A-C8A	3.03	108.92	105.74
3	A	188	3TU	OXT-C-CA	3.02	123.21	113.34
4	A	189	SO4	O3-S-O2	3.00	125.24	109.56
2	A	187	NDP	C5A-N7A-C8A	2.97	108.12	103.45
2	A	187	NDP	N3A-C2A-N1A	-2.87	124.24	128.58
3	A	188	3TU	CB-CG-CD	-2.85	104.88	112.49
3	A	188	3TU	O-C-CA	-2.85	113.68	122.44
3	A	188	3TU	CAZ-CAM-CBB	-2.74	117.12	120.88
2	A	187	NDP	C4A-C5A-N7A	-2.69	107.50	110.58
2	A	187	NDP	C1D-N1N-C2N	-2.56	116.92	121.14
3	A	188	3TU	OE1-CD-CG	-2.54	115.04	123.09
3	A	188	3TU	CAK-CBD-CAX	2.51	133.81	129.59
2	A	187	NDP	O3D-C3D-C2D	-2.45	103.98	111.82
2	A	187	NDP	C5A-C4A-N9A	2.42	108.45	105.81
3	A	188	3TU	CAH-CAJ-CBC	2.37	124.36	120.88
3	A	188	3TU	CAK-CAI-CAZ	2.32	122.97	120.30
2	A	187	NDP	O3-PN-O1N	-2.29	103.83	110.70
2	A	187	NDP	C3B-C2B-C1B	2.24	107.10	102.81
4	A	189	SO4	O4-S-O1	2.16	120.84	109.56
3	A	188	3TU	CAM-CBB-CBD	2.08	122.90	120.65
3	A	188	3TU	C2-N1-C6	-2.06	121.38	125.11
2	A	187	NDP	C4A-N9A-C1B	-2.04	121.85	126.63

There are no chirality outliers.

All (7) torsion outliers are listed below:

Mol	Chain	Res	Type	Atoms
3	A	188	3TU	CB-CA-N-CAQ
3	A	188	3TU	N-CA-CB-CG
3	A	188	3TU	O-C-CA-N
3	A	188	3TU	CB-CA-N-CAX
2	A	187	NDP	O4D-C1D-N1N-C2N
2	A	187	NDP	C4D-C5D-O5D-PN
3	A	188	3TU	OXT-C-CA-N

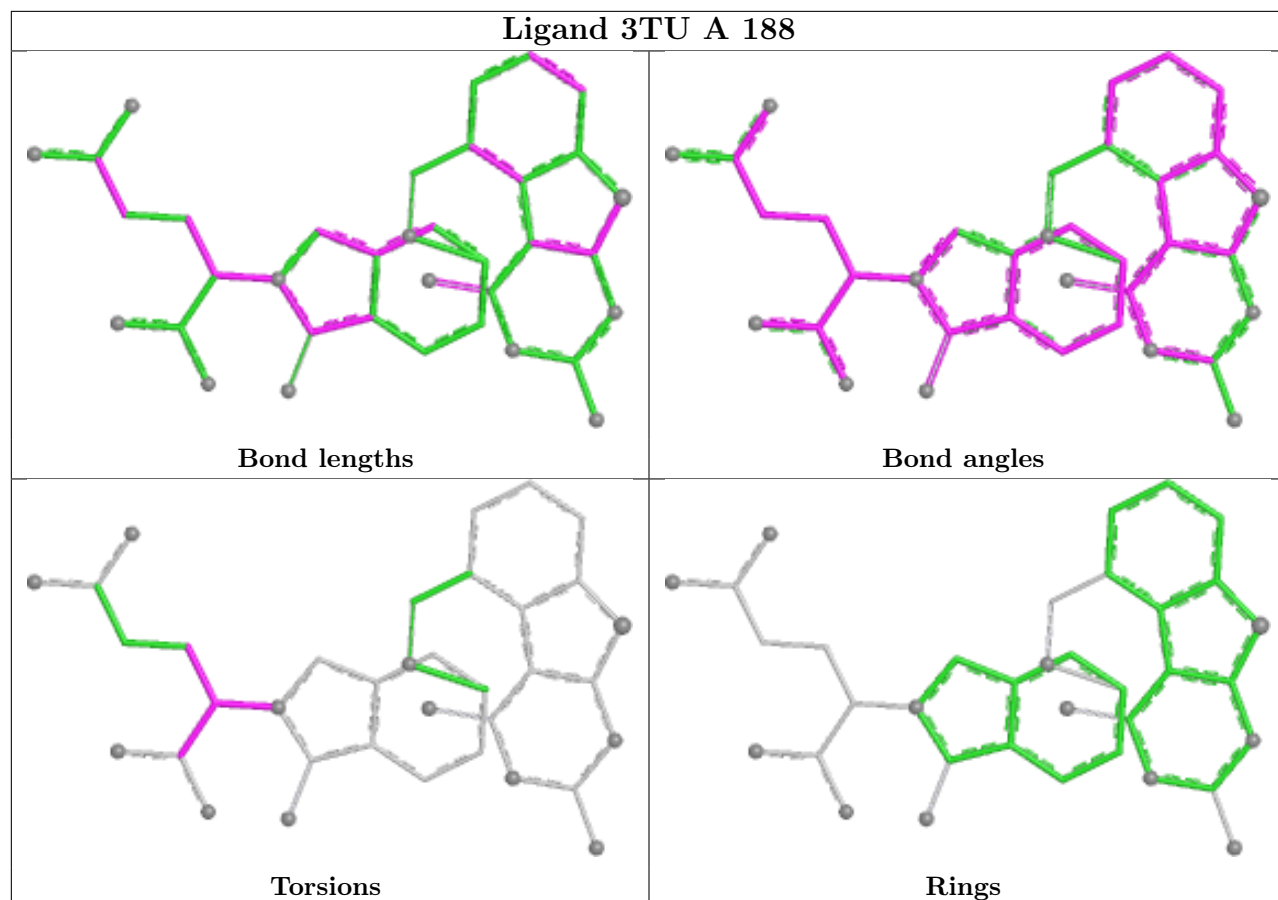
There are no ring outliers.

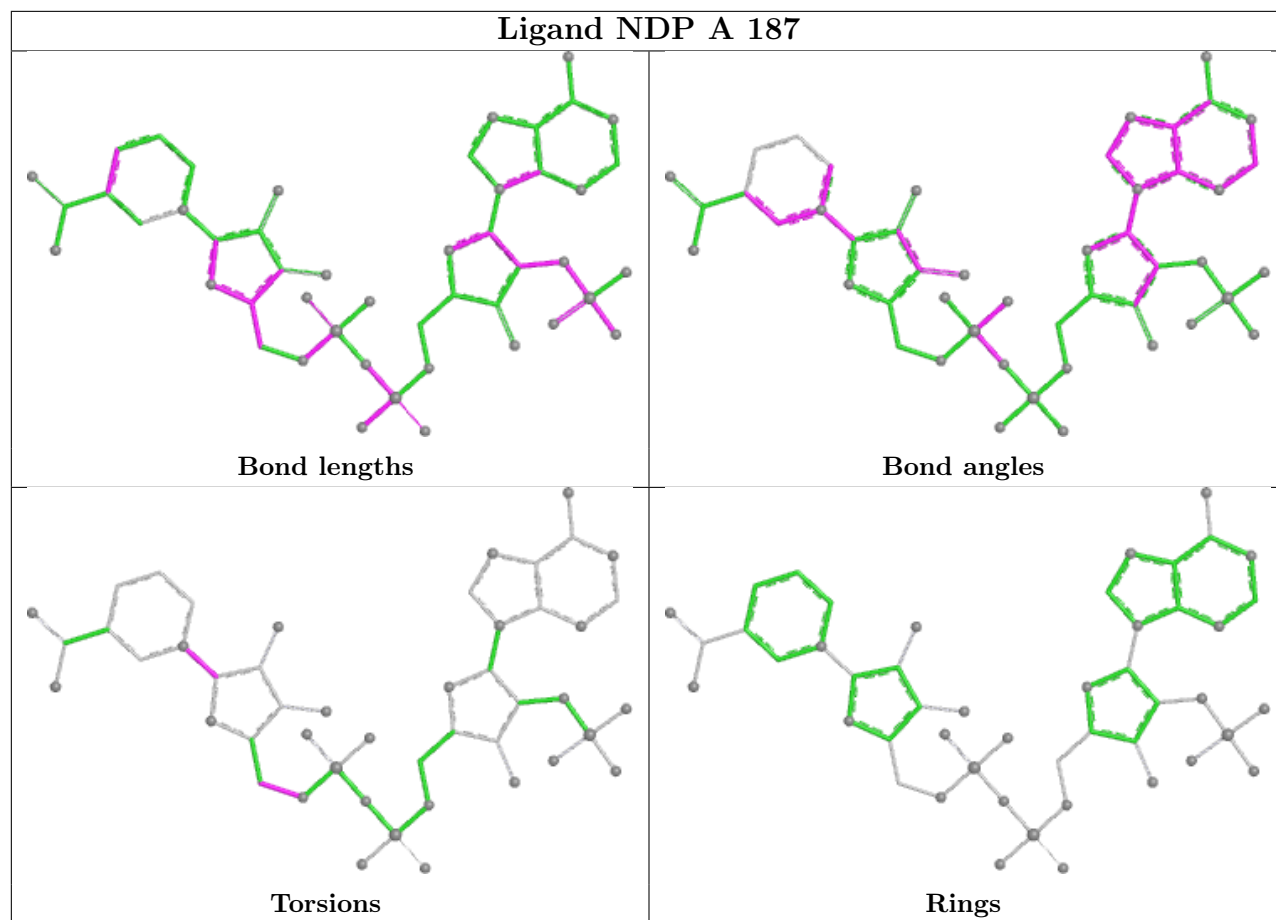
2 monomers are involved in 4 short contacts:

Mol	Chain	Res	Type	Clashes	Symm-Clashes
3	A	188	3TU	3	0
2	A	187	NDP	2	0

The following is a two-dimensional graphical depiction of Mogul quality analysis of bond lengths, bond angles, torsion angles, and ring geometry for all instances of the Ligand of Interest. In addition, ligands with molecular weight > 250 and outliers as shown on the validation Tables will also be included. For torsion angles, if less than 5% of the Mogul distribution of torsion angles is within 10 degrees of the torsion angle in question, then that torsion angle is considered an outlier. Any bond that is central to one or more torsion angles identified as an outlier by Mogul will be highlighted in the graph. For rings, the root-mean-square deviation (RMSD) between the ring in question and similar rings identified by Mogul is calculated over all ring torsion angles. If the average RMSD is greater than 60 degrees and the minimal RMSD between the ring in question and any Mogul-identified rings is also greater than 60 degrees, then that ring is considered an outlier. The outliers are highlighted in purple. The color gray indicates Mogul did not find sufficient equivalents in the CSD to analyse the geometry.

Ligand 3TU A 188





5.7 Other polymers [i](#)

There are no such residues in this entry.

5.8 Polymer linkage issues [i](#)

There are no chain breaks in this entry.

6 Fit of model and data [i](#)

6.1 Protein, DNA and RNA chains [i](#)

In the following table, the column labelled ‘#RSRZ> 2’ contains the number (and percentage) of RSRZ outliers, followed by percent RSRZ outliers for the chain as percentile scores relative to all X-ray entries and entries of similar resolution. The OWAB column contains the minimum, median, 95th percentile and maximum values of the occupancy-weighted average B-factor per residue. The column labelled ‘Q< 0.9’ lists the number of (and percentage) of residues with an average occupancy less than 0.9.

Mol	Chain	Analysed	<RSRZ>	#RSRZ>2		OWAB(Å ²)	Q<0.9
1	A	186/186 (100%)	0.25	14 (7%)	20 28	4, 13, 30, 43	10 (5%)

All (14) RSRZ outliers are listed below:

Mol	Chain	Res	Type	RSRZ
1	A	128	PRO	3.6
1	A	42	SER	3.5
1	A	103	PRO	2.6
1	A	1	VAL	2.6
1	A	106	ALA	2.6
1	A	127	HIS	2.6
1	A	141[A]	ASP	2.5
1	A	44	GLU	2.4
1	A	43	VAL	2.2
1	A	45	GLY	2.1
1	A	104	GLU	2.1
1	A	98	LYS	2.1
1	A	110	ASP	2.1
1	A	101	GLU	2.1

6.2 Non-standard residues in protein, DNA, RNA chains [i](#)

There are no non-standard protein/DNA/RNA residues in this entry.

6.3 Carbohydrates [i](#)

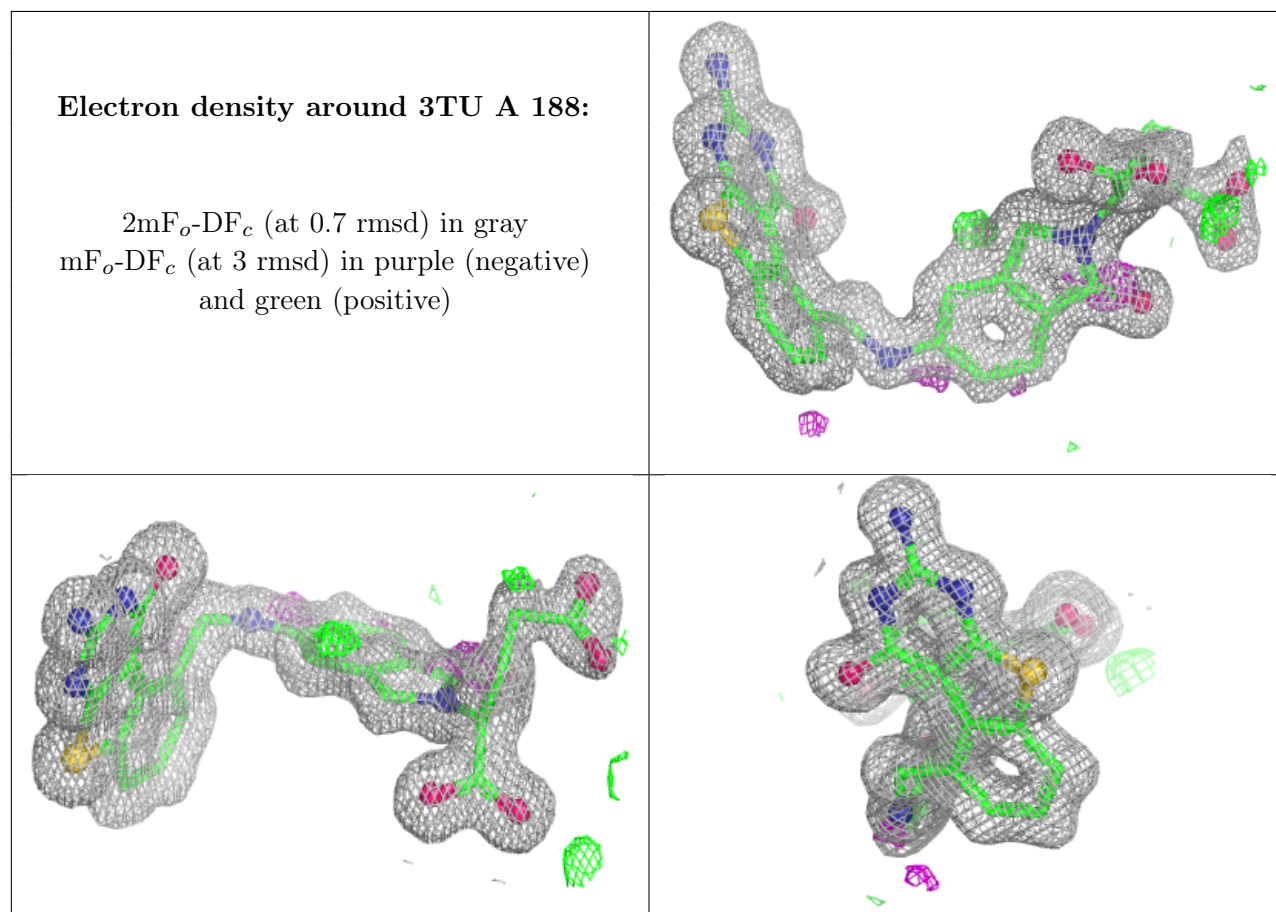
There are no oligosaccharides in this entry.

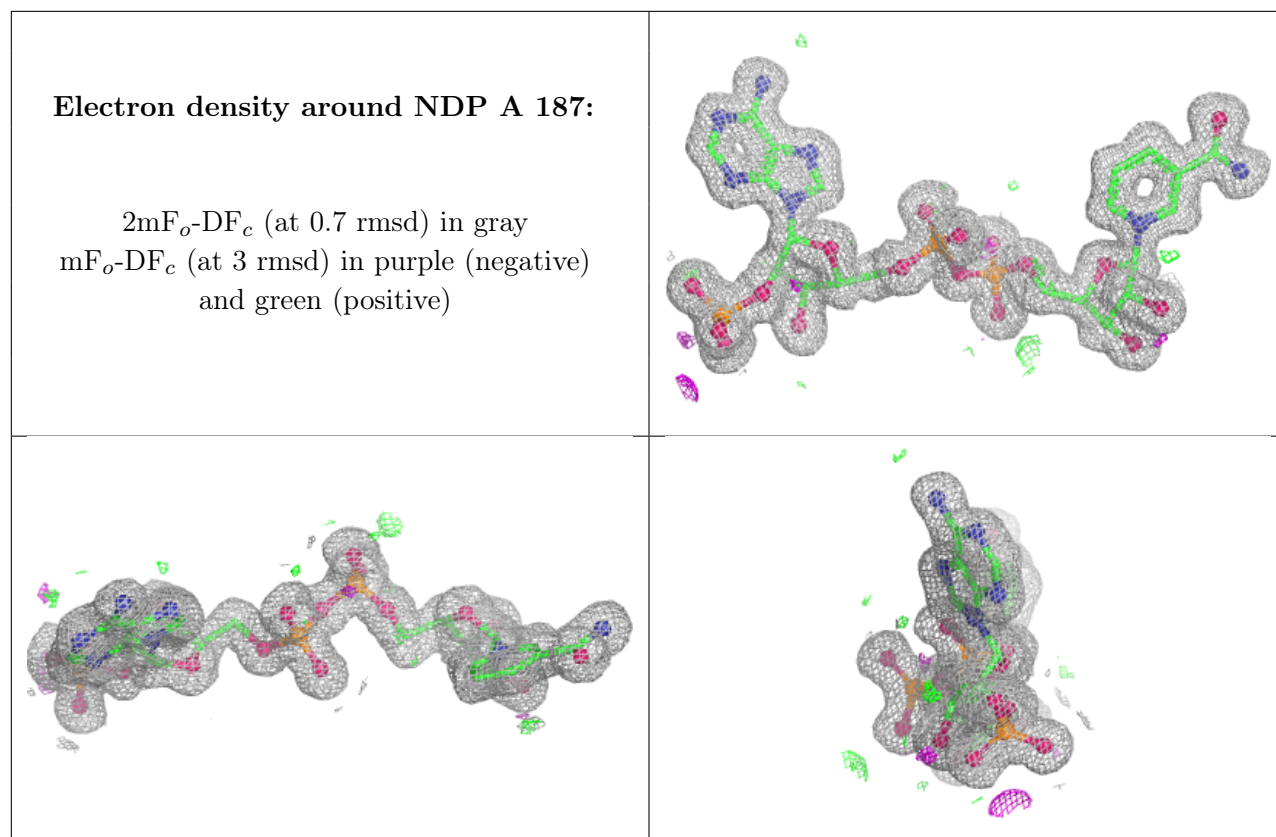
6.4 Ligands ⓘ

In the following table, the Atoms column lists the number of modelled atoms in the group and the number defined in the chemical component dictionary. The B-factors column lists the minimum, median, 95th percentile and maximum values of B factors of atoms in the group. The column labelled 'Q< 0.9' lists the number of atoms with occupancy less than 0.9.

Mol	Type	Chain	Res	Atoms	RSCC	RSR	B-factors(Å ²)	Q<0.9
4	SO4	A	189	5/5	0.88	0.18	16,17,23,24	5
4	SO4	A	190	5/5	0.91	0.12	14,22,23,26	5
4	SO4	A	191	5/5	0.93	0.10	22,24,26,27	5
3	3TU	A	188	36/36	0.97	0.07	7,15,29,35	0
2	NDP	A	187	48/48	0.99	0.04	7,9,14,17	0

The following is a graphical depiction of the model fit to experimental electron density of all instances of the Ligand of Interest. In addition, ligands with molecular weight > 250 and outliers as shown on the geometry validation Tables will also be included. Each fit is shown from different orientation to approximate a three-dimensional view.





6.5 Other polymers [i](#)

There are no such residues in this entry.