



Full wwPDB X-ray Structure Validation Report ⓘ

Mar 5, 2026 – 04:09 AM UTC

PDB ID : 3Q8P / pdb_00003q8p
Title : Human DNA polymerase iota incorporating dCTP opposite 8-oxo-guanine
Authors : Kirouac, K.N.; Ling, H.
Deposited on : 2011-01-06
Resolution : 1.95 Å(reported)

This is a Full wwPDB X-ray Structure Validation Report for a publicly released PDB entry.

We welcome your comments at validation@mail.wwpdb.org

A user guide is available at

<https://www.wwpdb.org/validation/2017/XrayValidationReportHelp>

with specific help available everywhere you see the ⓘ symbol.

The types of validation reports are described at

<http://www.wwpdb.org/validation/2017/FAQs#types>.

The following versions of software and data (see [references ⓘ](#)) were used in the production of this report:

MolProbity : 4-5-2 with Phenix2.0
Mogul : 2022.3.0, CSD as543be (2022)
Xtriage (Phenix) : 2.0
EDS : 3.0
Buster-report : wwPDB partial adaption of 1.1.7 (2018)
Percentile statistics : 20250101.v01 (using entries in the PDB archive January 1st 2025)
CCP4 : 9.0.010 (Gargrove)
Density-Fitness : 1.0.12
Ideal geometry (proteins) : Engh & Huber (2001)
Ideal geometry (DNA, RNA) : Parkinson et al. (1996)
Validation Pipeline (wwPDB-VP) : 2.49

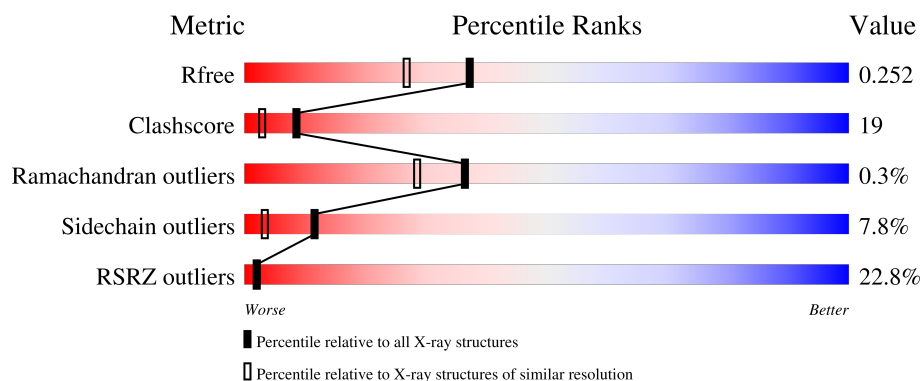
1 Overall quality at a glance

The following experimental techniques were used to determine the structure:

X-RAY DIFFRACTION

The reported resolution of this entry is 1.95 Å.

Percentile scores (ranging between 0-100) for global validation metrics of the entry are shown in the following graphic. The table shows the number of entries on which the scores are based.



Metric	Whole archive (#Entries)	Similar resolution (#Entries, resolution range(Å))
R_{free}	180053	3494 (1.96-1.96)
Clashscore	190562	3612 (1.96-1.96)
Ramachandran outliers	187476	3587 (1.96-1.96)
Sidechain outliers	187428	3587 (1.96-1.96)
RSRZ outliers	180081	3495 (1.96-1.96)

The table below summarises the geometric issues observed across the polymeric chains and their fit to the electron density. The red, orange, yellow and green segments of the lower bar indicate the fraction of residues that contain outliers for ≥ 3 , 2, 1 and 0 types of geometric quality criteria respectively. A grey segment represents the fraction of residues that are not modelled. The numeric value for each fraction is indicated below the corresponding segment, with a dot representing fractions $\leq 5\%$. The upper red bar (where present) indicates the fraction of residues that have poor fit to the electron density. The numeric value is given above the bar.

Mol	Chain	Length	Quality of chain
1	B	420	<div> <div>21%</div> <div>65%</div> <div>21%</div> <div>10%</div> </div>
2	T	11	<div> <div>27%</div> <div>27%</div> <div>18%</div> <div>27%</div> </div>
3	P	7	<div> <div>43%</div> <div>57%</div> </div>

The following table lists non-polymeric compounds, carbohydrate monomers and non-standard residues in protein, DNA, RNA chains that are outliers for geometric or electron-density-fit criteria:

Mol	Type	Chain	Res	Chirality	Geometry	Clashes	Electron density
4	DCP	B	421[A]	-	-	X	-

2 Entry composition

There are 6 unique types of molecules in this entry. The entry contains 3743 atoms, of which 0 are hydrogens and 0 are deuteriums.

In the tables below, the ZeroOcc column contains the number of atoms modelled with zero occupancy, the AltConf column contains the number of residues with at least one atom in alternate conformation and the Trace column contains the number of residues modelled with at most 2 atoms.

- Molecule 1 is a protein called DNA polymerase iota.

Mol	Chain	Residues	Atoms					ZeroOcc	AltConf	Trace
1	B	380	Total	C	N	O	S	0	3	0
			2983	1888	522	551	22			

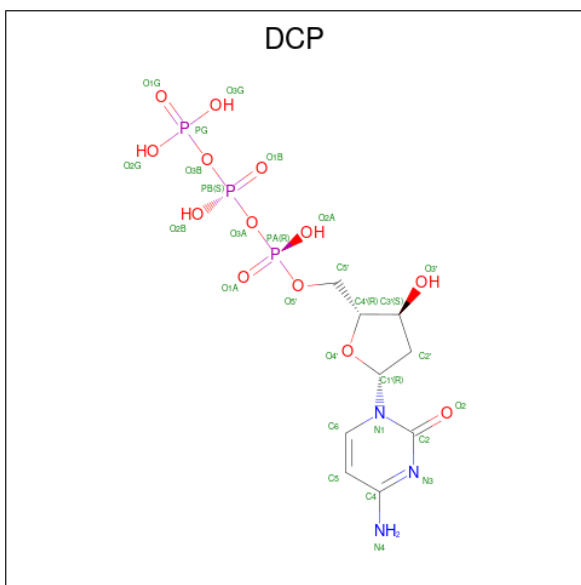
- Molecule 2 is a DNA chain called DNA (5'-D(*TP*CP*AP*(8OG)P*GP*GP*GP*TP*CP*CP*T)-3').

Mol	Chain	Residues	Atoms					ZeroOcc	AltConf	Trace
2	T	8	Total	C	N	O	P	0	1	0
			190	88	35	58	9			

- Molecule 3 is a DNA chain called DNA (5'-D(P*AP*GP*GP*AP*CP*CP*C)-3').

Mol	Chain	Residues	Atoms					ZeroOcc	AltConf	Trace
3	P	7	Total	C	N	O	P	0	0	0
			142	67	29	39	7			

- Molecule 4 is 2'-DEOXYCYTIDINE-5'-TRIPHOSPHATE (CCD ID: DCP) (formula: $C_9H_{16}N_3O_{13}P_3$).



Mol	Chain	Residues	Atoms					ZeroOcc	AltConf
4	B	1	Total	C	N	O	P	0	1
			28	9	3	13	3		

- Molecule 5 is MAGNESIUM ION (CCD ID: MG) (formula: Mg).

Mol	Chain	Residues	Atoms	ZeroOcc	AltConf
5	B	2	Total Mg 2 2	0	0

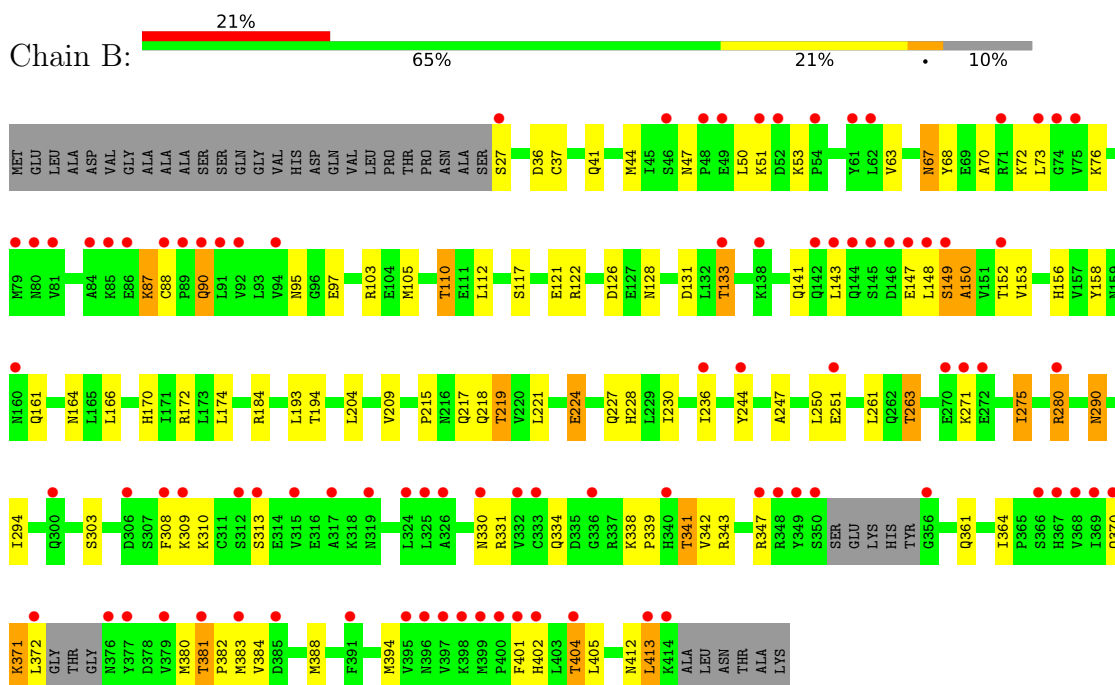
- Molecule 6 is water.

Mol	Chain	Residues	Atoms	ZeroOcc	AltConf
6	B	367	Total O 367 367	0	0
6	T	20	Total O 20 20	0	0
6	P	11	Total O 11 11	0	0

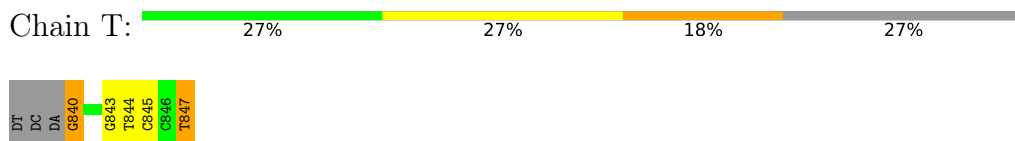
3 Residue-property plots [i](#)

These plots are drawn for all protein, RNA, DNA and oligosaccharide chains in the entry. The first graphic for a chain summarises the proportions of the various outlier classes displayed in the second graphic. The second graphic shows the sequence view annotated by issues in geometry and electron density. Residues are color-coded according to the number of geometric quality criteria for which they contain at least one outlier: green = 0, yellow = 1, orange = 2 and red = 3 or more. A red dot above a residue indicates a poor fit to the electron density ($RSRZ > 2$). Stretches of 2 or more consecutive residues without any outlier are shown as a green connector. Residues present in the sample, but not in the model, are shown in grey.

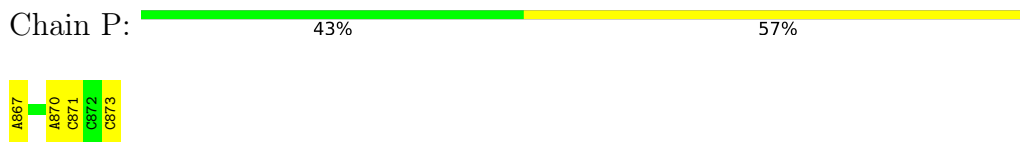
- Molecule 1: DNA polymerase iota



- Molecule 2: DNA (5'-D(*TP*CP*AP*(8OG)P*GP*GP*GP*TP*CP*CP*T)-3')



- Molecule 3: DNA (5'-D(P*AP*GP*GP*AP*CP*CP*C)-3')



4 Data and refinement statistics

Property	Value	Source
Space group	P 65 2 2	Depositor
Cell constants a, b, c, α , β , γ	99.16Å 99.16Å 202.32Å 90.00° 90.00° 120.00°	Depositor
Resolution (Å)	32.73 – 1.95 32.73 – 1.95	Depositor EDS
% Data completeness (in resolution range)	95.3 (32.73-1.95) 94.1 (32.73-1.95)	Depositor EDS
R_{merge}	(Not available)	Depositor
R_{sym}	(Not available)	Depositor
$\langle I/\sigma(I) \rangle$ ¹	2.43 (at 1.95Å)	Xtriage
Refinement program	PHENIX (phenix.refine: 1.6.4_486)	Depositor
R, R_{free}	0.225 , 0.257 0.218 , 0.252	Depositor DCC
R_{free} test set	1513 reflections (3.50%)	wwPDB-VP
Wilson B-factor (Å ²)	30.8	Xtriage
Anisotropy	0.405	Xtriage
Bulk solvent k_{sol} (e/Å ³), B_{sol} (Å ²)	0.32 , 56.2	EDS
L-test for twinning ²	$\langle L \rangle = 0.49$, $\langle L^2 \rangle = 0.33$	Xtriage
Estimated twinning fraction	No twinning to report.	Xtriage
F_o, F_c correlation	0.94	EDS
Total number of atoms	3743	wwPDB-VP
Average B, all atoms (Å ²)	49.0	wwPDB-VP

Xtriage's analysis on translational NCS is as follows: *The largest off-origin peak in the Patterson function is 3.59% of the height of the origin peak. No significant pseudotranslation is detected.*

¹Intensities estimated from amplitudes.

²Theoretical values of $\langle |L| \rangle$, $\langle L^2 \rangle$ for acentric reflections are 0.5, 0.333 respectively for untwinned datasets, and 0.375, 0.2 for perfectly twinned datasets.

5 Model quality [i](#)

5.1 Standard geometry [i](#)

Bond lengths and bond angles in the following residue types are not validated in this section: 8OG, MG, DCP

The Z score for a bond length (or angle) is the number of standard deviations the observed value is removed from the expected value. A bond length (or angle) with $|Z| > 5$ is considered an outlier worth inspection. RMSZ is the root-mean-square of all Z scores of the bond lengths (or angles).

Mol	Chain	Bond lengths		Bond angles	
		RMSZ	$\# Z > 5$	RMSZ	$\# Z > 5$
1	B	0.42	0/3027	0.76	2/4088 (0.0%)
2	T	0.31	0/160	1.13	2/245 (0.8%)
3	P	0.24	0/159	0.80	0/242
All	All	0.41	0/3346	0.78	4/4575 (0.1%)

There are no bond length outliers.

All (4) bond angle outliers are listed below:

Mol	Chain	Res	Type	Atoms	Z	Observed(°)	Ideal(°)
1	B	149	SER	CA-C-N	6.14	132.76	121.70
1	B	149	SER	C-N-CA	6.14	132.76	121.70
2	T	843	DG	P-O5'-C5'	5.63	128.45	120.00
2	T	847	DT	C4'-C3'-O3'	-5.59	101.62	110.00

There are no chirality outliers.

There are no planarity outliers.

5.2 Too-close contacts [i](#)

In the following table, the Non-H and H(model) columns list the number of non-hydrogen atoms and hydrogen atoms in the chain respectively. The H(added) column lists the number of hydrogen atoms added and optimized by MolProbity. The Clashes column lists the number of clashes within the asymmetric unit, whereas Symm-Clashes lists symmetry-related clashes.

Mol	Chain	Non-H	H(model)	H(added)	Clashes	Symm-Clashes
1	B	2983	0	3027	111	0
2	T	190	0	99	4	1
3	P	142	0	76	7	1
4	B	28	0	11	10	0

Continued on next page...

Continued from previous page...

Mol	Chain	Non-H	H(model)	H(added)	Clashes	Symm-Clashes
5	B	2	0	0	0	0
6	B	367	0	0	15	0
6	P	11	0	0	0	0
6	T	20	0	0	0	0
All	All	3743	0	3213	124	1

The all-atom clashscore is defined as the number of clashes found per 1000 atoms (including hydrogen atoms). The all-atom clashscore for this structure is 19.

All (124) close contacts within the same asymmetric unit are listed below, sorted by their clash magnitude.

Atom-1	Atom-2	Interatomic distance (Å)	Clash overlap (Å)
1:B:149:SER:HB2	1:B:150:ALA:HB2	1.37	1.01
1:B:164:ASN:H	1:B:170:HIS:HD2	1.14	0.93
1:B:236:ILE:HD11	1:B:261:LEU:HD22	1.50	0.92
1:B:41:GLN:HE22	1:B:194:THR:H	1.15	0.91
4:B:421[A]:DCP:H5'1	3:P:873:DC:C3'	2.05	0.87
4:B:421[A]:DCP:H5'1	3:P:873:DC:C2'	2.05	0.87
4:B:421[A]:DCP:H6	4:B:421[A]:DCP:H5'2	1.56	0.86
1:B:44:MET:HE2	1:B:51:LYS:HA	1.58	0.83
1:B:184:ARG:HE	1:B:218:GLN:HE21	1.28	0.80
1:B:236:ILE:HD13	1:B:250:LEU:HD13	1.63	0.79
1:B:342:VAL:HG23	1:B:364:ILE:HG12	1.64	0.78
1:B:149:SER:CB	1:B:150:ALA:HB2	2.14	0.77
4:B:421[A]:DCP:C5'	3:P:873:DC:C2'	2.64	0.76
4:B:421[A]:DCP:C5'	3:P:873:DC:H2'	2.16	0.75
1:B:90:GLN:H	1:B:90:GLN:HE21	1.35	0.73
1:B:341:THR:HG23	1:B:412:ASN:HB3	1.69	0.73
1:B:149:SER:N	1:B:150:ALA:HB3	2.06	0.71
1:B:347:ARG:HE	1:B:404:THR:HG22	1.55	0.70
1:B:90:GLN:H	1:B:90:GLN:NE2	1.89	0.70
1:B:401[B]:PHE:HD2	1:B:402:HIS:N	1.89	0.70
1:B:110:THR:HG21	1:B:122:ARG:HH11	1.58	0.69
1:B:339:PRO:HA	1:B:413:LEU:HD12	1.76	0.68
1:B:156:HIS:HB2	1:B:219:THR:HB	1.77	0.66
1:B:227:GLN:NE2	1:B:230:ILE:HD11	2.11	0.65
1:B:156:HIS:HD2	6:B:776:HOH:O	1.80	0.65
1:B:110:THR:CG2	1:B:122:ARG:HH11	2.12	0.63
1:B:401[B]:PHE:CD2	1:B:402:HIS:N	2.63	0.63
1:B:149:SER:N	1:B:150:ALA:CB	2.62	0.61
1:B:227:GLN:HE22	1:B:230:ILE:HD11	1.63	0.61

Continued on next page...

Continued from previous page...

Atom-1	Atom-2	Interatomic distance (Å)	Clash overlap (Å)
1:B:67:ASN:HD22	1:B:67:ASN:C	2.05	0.61
1:B:381:THR:HG23	1:B:382:PRO:HD3	1.83	0.60
1:B:164:ASN:H	1:B:170:HIS:CD2	2.06	0.58
4:B:421[A]:DCP:C5'	3:P:873:DC:C3'	2.81	0.58
1:B:41:GLN:NE2	1:B:194:THR:H	1.94	0.58
4:B:421[A]:DCP:O2A	6:B:436:HOH:O	2.17	0.58
1:B:331:ARG:HD2	6:B:757:HOH:O	2.02	0.58
1:B:347:ARG:HH11	1:B:404:THR:HG23	1.66	0.58
2:T:840[B]:8OG:H5'	2:T:840[B]:8OG:O8	2.05	0.57
1:B:158:TYR:OH	1:B:228:HIS:HD2	1.86	0.57
1:B:87:LYS:O	1:B:87:LYS:HG3	2.04	0.57
1:B:131:ASP:OD2	1:B:133:THR:CG2	2.52	0.56
1:B:152:THR:HG22	6:B:442:HOH:O	2.06	0.56
4:B:421[A]:DCP:H5'2	3:P:873:DC:H2'	1.86	0.55
1:B:347:ARG:HE	1:B:404:THR:CG2	2.18	0.55
1:B:341:THR:HG23	1:B:412:ASN:CB	2.34	0.55
1:B:236:ILE:CD1	1:B:250:LEU:HD13	2.35	0.54
4:B:421[A]:DCP:C4	2:T:840[A]:8OG:H7	2.20	0.54
1:B:148:LEU:HD23	1:B:148:LEU:O	2.08	0.54
1:B:309:LYS:O	1:B:402:HIS:HE1	1.91	0.54
1:B:342:VAL:HG23	1:B:364:ILE:CG1	2.36	0.54
1:B:371:LYS:HD2	1:B:371:LYS:H	1.73	0.53
1:B:110:THR:HG21	1:B:122:ARG:HG2	1.90	0.53
1:B:247:ALA:O	1:B:251:GLU:HG3	2.09	0.53
1:B:371:LYS:O	1:B:372:LEU:C	2.51	0.53
1:B:244:TYR:CD2	1:B:244:TYR:C	2.87	0.52
1:B:170:HIS:HE1	1:B:224:GLU:OE2	1.93	0.52
1:B:364:ILE:HD13	1:B:383:MET:HE1	1.92	0.52
1:B:244:TYR:C	1:B:244:TYR:HD2	2.18	0.52
1:B:41:GLN:HE22	1:B:194:THR:N	1.95	0.51
1:B:161:GLN:HE22	1:B:224:GLU:HG2	1.74	0.51
3:P:870:DA:H2'	3:P:871:DC:C6	2.46	0.51
1:B:27:SER:O	1:B:172:ARG:NH2	2.43	0.51
1:B:68:TYR:O	1:B:72:LYS:HD3	2.11	0.51
1:B:339:PRO:O	1:B:364:ILE:HD12	2.11	0.51
1:B:149:SER:CA	1:B:150:ALA:CB	2.89	0.51
1:B:47:ASN:HD22	1:B:47:ASN:C	2.20	0.50
1:B:131:ASP:OD2	1:B:133:THR:HG23	2.12	0.49
1:B:372:LEU:HA	6:B:446:HOH:O	2.11	0.49
2:T:844:DT:H2'	2:T:845:DC:C6	2.47	0.49
1:B:290[A]:ASN:H	1:B:290[A]:ASN:HD22	1.60	0.49

Continued on next page...

Continued from previous page...

Atom-1	Atom-2	Interatomic distance (Å)	Clash overlap (Å)
1:B:184:ARG:HE	1:B:218:GLN:NE2	2.04	0.48
1:B:131:ASP:OD2	1:B:133:THR:HG22	2.12	0.48
1:B:244:TYR:HD2	1:B:244:TYR:O	1.97	0.48
4:B:421[A]:DCP:N3	2:T:840[A]:8OG:N7	2.58	0.48
1:B:141:GLN:HG3	6:B:487:HOH:O	2.13	0.48
1:B:149:SER:CA	1:B:150:ALA:HB2	2.44	0.47
1:B:303:SER:O	1:B:331:ARG:NH2	2.47	0.47
1:B:76:LYS:N	1:B:76:LYS:HD2	2.30	0.47
1:B:148:LEU:C	1:B:150:ALA:HB3	2.40	0.47
1:B:343:ARG:CZ	1:B:361:GLN:NE2	2.77	0.47
1:B:371:LYS:HG2	1:B:372:LEU:N	2.31	0.46
1:B:112:LEU:HD23	1:B:112:LEU:C	2.39	0.46
1:B:280:ARG:HD3	6:B:627:HOH:O	2.15	0.46
1:B:290[A]:ASN:HD22	1:B:290[A]:ASN:N	2.14	0.46
1:B:380:MET:O	1:B:384:VAL:HG13	2.15	0.46
1:B:184:ARG:NE	1:B:218:GLN:HE21	2.05	0.46
1:B:371:LYS:HG2	6:B:446:HOH:O	2.14	0.46
1:B:47:ASN:HB3	1:B:50:LEU:HD12	1.98	0.46
1:B:141:GLN:HG2	6:B:573:HOH:O	2.16	0.46
1:B:156:HIS:HE1	1:B:217:GLN:OE1	1.99	0.45
1:B:95:ASN:HD21	1:B:97:GLU:HB2	1.82	0.45
1:B:67:ASN:C	1:B:67:ASN:ND2	2.74	0.45
1:B:338:LYS:NZ	1:B:370:GLN:HA	2.32	0.44
1:B:381:THR:HA	1:B:384:VAL:HG22	1.98	0.44
1:B:371:LYS:HD2	1:B:371:LYS:N	2.32	0.44
1:B:152:THR:HG23	6:B:713:HOH:O	2.17	0.44
1:B:110:THR:HB	1:B:128:ASN:OD1	2.18	0.44
1:B:68:TYR:CZ	1:B:215:PRO:HB3	2.53	0.44
1:B:310:LYS:HG2	6:B:690:HOH:O	2.17	0.44
1:B:73:LEU:HD12	1:B:88:CYS:SG	2.58	0.44
1:B:263:THR:HG21	6:B:612:HOH:O	2.17	0.44
1:B:87:LYS:HA	1:B:87:LYS:HE2	1.99	0.43
1:B:105:MET:HE2	1:B:193:LEU:HD11	1.99	0.43
1:B:347:ARG:HB3	1:B:405:LEU:HB3	2.01	0.43
1:B:67:ASN:ND2	1:B:70:ALA:H	2.16	0.42
1:B:47:ASN:C	1:B:47:ASN:ND2	2.78	0.42
1:B:347:ARG:NH1	1:B:404:THR:HG23	2.33	0.42
1:B:384:VAL:O	1:B:388:MET:HG2	2.19	0.42
1:B:381:THR:N	1:B:382:PRO:HD2	2.35	0.42
1:B:44:MET:HE3	1:B:67:ASN:OD1	2.20	0.42
1:B:121:GLU:HB2	1:B:294:ILE:O	2.20	0.41

Continued on next page...

Continued from previous page...

Atom-1	Atom-2	Interatomic distance (Å)	Clash overlap (Å)
1:B:147:GLU:C	1:B:150:ALA:HB3	2.44	0.41
1:B:330:ASN:O	1:B:334:GLN:HG3	2.19	0.41
1:B:117:SER:OG	6:B:508:HOH:O	2.22	0.41
1:B:166:LEU:HD22	1:B:166:LEU:N	2.36	0.41
1:B:95:ASN:ND2	1:B:97:GLU:H	2.18	0.41
1:B:313:SER:HB2	6:B:572:HOH:O	2.20	0.41
1:B:103:ARG:NH2	6:B:767:HOH:O	2.47	0.41
1:B:36:ASP:O	1:B:37:CYS:C	2.63	0.40
1:B:153:VAL:HB	1:B:174:LEU:HD22	2.03	0.40
1:B:275:ILE:O	1:B:275:ILE:HD13	2.20	0.40
1:B:347:ARG:NE	1:B:404:THR:CG2	2.84	0.40
1:B:224:GLU:CD	1:B:224:GLU:H	2.29	0.40
1:B:263:THR:O	1:B:263:THR:CG2	2.67	0.40

All (1) symmetry-related close contacts are listed below. The label for Atom-2 includes the symmetry operator and encoded unit-cell translations to be applied.

Atom-1	Atom-2	Interatomic distance (Å)	Clash overlap (Å)
2:T:847:DT:O3'	3:P:867:DA:P[12_544]	2.06	0.14

5.3 Torsion angles [i](#)

5.3.1 Protein backbone [i](#)

In the following table, the Percentiles column shows the percent Ramachandran outliers of the chain as a percentile score with respect to all X-ray entries followed by that with respect to entries of similar resolution.

The Analysed column shows the number of residues for which the backbone conformation was analysed, and the total number of residues.

Mol	Chain	Analysed	Favoured	Allowed	Outliers	Percentiles
1	B	377/420 (90%)	360 (96%)	16 (4%)	1 (0%)	36 28

All (1) Ramachandran outliers are listed below:

Mol	Chain	Res	Type
1	B	150	ALA

5.3.2 Protein sidechains ⓘ

In the following table, the Percentiles column shows the percent sidechain outliers of the chain as a percentile score with respect to all X-ray entries followed by that with respect to entries of similar resolution.

The Analysed column shows the number of residues for which the sidechain conformation was analysed, and the total number of residues.

Mol	Chain	Analysed	Rotameric	Outliers	Percentiles
1	B	336/376 (89%)	309 (92%)	27 (8%)	11 3

All (27) residues with a non-rotameric sidechain are listed below:

Mol	Chain	Res	Type
1	B	53	LYS
1	B	63	VAL
1	B	67	ASN
1	B	87	LYS
1	B	90	GLN
1	B	110	THR
1	B	126	ASP
1	B	133	THR
1	B	143	LEU
1	B	204	LEU
1	B	209	VAL
1	B	219	THR
1	B	221	LEU
1	B	224	GLU
1	B	263	THR
1	B	271	LYS
1	B	275	ILE
1	B	280	ARG
1	B	290[A]	ASN
1	B	290[B]	ASN
1	B	308	PHE
1	B	341	THR
1	B	371	LYS
1	B	381	THR
1	B	394	MET
1	B	404	THR
1	B	413	LEU

Sometimes sidechains can be flipped to improve hydrogen bonding and reduce clashes. All (13) such sidechains are listed below:

Mol	Chain	Res	Type
1	B	41	GLN
1	B	47	ASN
1	B	90	GLN
1	B	95	ASN
1	B	156	HIS
1	B	170	HIS
1	B	218	GLN
1	B	227	GLN
1	B	228	HIS
1	B	282	GLN
1	B	330	ASN
1	B	361	GLN
1	B	402	HIS

5.3.3 RNA ⓘ

There are no RNA molecules in this entry.

5.4 Non-standard residues in protein, DNA, RNA chains ⓘ

2 non-standard protein/DNA/RNA residues are modelled in this entry.

In the following table, the Counts columns list the number of bonds (or angles) for which Mogul statistics could be retrieved, the number of bonds (or angles) that are observed in the model and the number of bonds (or angles) that are defined in the Chemical Component Dictionary. The Link column lists molecule types, if any, to which the group is linked. The Z score for a bond length (or angle) is the number of standard deviations the observed value is removed from the expected value. A bond length (or angle) with $|Z| > 2$ is considered an outlier worth inspection. RMSZ is the root-mean-square of all Z scores of the bond lengths (or angles).

Mol	Type	Chain	Res	Link	Bond lengths			Bond angles		
					Counts	RMSZ	# $ Z > 2$	Counts	RMSZ	# $ Z > 2$
2	8OG	T	840[A]	2	22,25,26	2.37	7 (31%)	26,37,40	3.03	9 (34%)
2	8OG	T	840[B]	2	22,25,26	2.33	7 (31%)	26,37,40	2.93	8 (30%)

In the following table, the Chirals column lists the number of chiral outliers, the number of chiral centers analysed, the number of these observed in the model and the number defined in the Chemical Component Dictionary. Similar counts are reported in the Torsion and Rings columns. '-' means no outliers of that kind were identified.

Mol	Type	Chain	Res	Link	Chirals	Torsions	Rings
2	8OG	T	840[A]	2	-	1/7/21/22	0/3/3/3
2	8OG	T	840[B]	2	-	1/7/21/22	0/3/3/3

All (14) bond length outliers are listed below:

Mol	Chain	Res	Type	Atoms	Z	Observed(Å)	Ideal(Å)
2	T	840[A]	8OG	C5-C4	8.26	1.48	1.37
2	T	840[B]	8OG	C5-C4	8.23	1.48	1.37
2	T	840[A]	8OG	C8-N9	-4.15	1.33	1.40
2	T	840[B]	8OG	C8-N9	-3.66	1.34	1.40
2	T	840[A]	8OG	C4-N9	-2.77	1.34	1.39
2	T	840[B]	8OG	C6-N1	-2.58	1.34	1.38
2	T	840[A]	8OG	C8-N7	-2.51	1.33	1.38
2	T	840[B]	8OG	C4-N9	-2.40	1.34	1.39
2	T	840[A]	8OG	C5-N7	-2.32	1.34	1.37
2	T	840[B]	8OG	C5-C6	2.31	1.48	1.41
2	T	840[B]	8OG	C8-N7	-2.25	1.34	1.38
2	T	840[A]	8OG	C6-N1	-2.19	1.34	1.38
2	T	840[A]	8OG	C5-C6	2.10	1.48	1.41
2	T	840[B]	8OG	C5-N7	-2.05	1.34	1.37

All (17) bond angle outliers are listed below:

Mol	Chain	Res	Type	Atoms	Z	Observed(°)	Ideal(°)
2	T	840[A]	8OG	N7-C8-N9	9.44	117.11	106.61
2	T	840[B]	8OG	N7-C8-N9	9.16	116.80	106.61
2	T	840[A]	8OG	N9-C4-N3	7.23	135.17	126.13
2	T	840[B]	8OG	N9-C4-N3	7.12	135.03	126.13
2	T	840[B]	8OG	C2-N3-C4	5.28	121.39	112.30
2	T	840[A]	8OG	C2-N3-C4	5.18	121.22	112.30
2	T	840[A]	8OG	C5-N7-C8	-4.27	103.59	109.47
2	T	840[B]	8OG	C5-N7-C8	-3.94	104.04	109.47
2	T	840[A]	8OG	O8-C8-N9	-3.53	121.19	126.00
2	T	840[B]	8OG	O8-C8-N7	-2.92	120.99	126.47
2	T	840[A]	8OG	O6-C6-C5	-2.88	120.32	127.26
2	T	840[B]	8OG	O8-C8-N9	-2.81	122.18	126.00
2	T	840[A]	8OG	O8-C8-N7	-2.55	121.68	126.47
2	T	840[B]	8OG	O6-C6-C5	-2.50	121.24	127.26
2	T	840[A]	8OG	C1'-N9-C4	2.49	131.26	126.88
2	T	840[B]	8OG	C5-C6-N1	2.28	118.38	112.13
2	T	840[A]	8OG	C5-C6-N1	2.12	117.94	112.13

There are no chirality outliers.

All (2) torsion outliers are listed below:

Mol	Chain	Res	Type	Atoms
2	T	840[B]	8OG	O4'-C4'-C5'-O5'

Continued on next page...

Continued from previous page...

Mol	Chain	Res	Type	Atoms
2	T	840[A]	8OG	O4'-C1'-N9-C4

There are no ring outliers.

2 monomers are involved in 3 short contacts:

Mol	Chain	Res	Type	Clashes	Symm-Clashes
2	T	840[A]	8OG	2	0
2	T	840[B]	8OG	1	0

5.5 Carbohydrates [i](#)

There are no oligosaccharides in this entry.

5.6 Ligand geometry [i](#)

Of 3 ligands modelled in this entry, 2 are monoatomic - leaving 1 for Mogul analysis.

In the following table, the Counts columns list the number of bonds (or angles) for which Mogul statistics could be retrieved, the number of bonds (or angles) that are observed in the model and the number of bonds (or angles) that are defined in the Chemical Component Dictionary. The Link column lists molecule types, if any, to which the group is linked. The Z score for a bond length (or angle) is the number of standard deviations the observed value is removed from the expected value. A bond length (or angle) with $|Z| > 2$ is considered an outlier worth inspection. RMSZ is the root-mean-square of all Z scores of the bond lengths (or angles).

Mol	Type	Chain	Res	Link	Bond lengths			Bond angles		
					Counts	RMSZ	# $ Z > 2$	Counts	RMSZ	# $ Z > 2$
4	DCP	B	421[A]	5	28,29,29	1.07	1 (3%)	41,45,45	1.03	3 (7%)

In the following table, the Chirals column lists the number of chiral outliers, the number of chiral centers analysed, the number of these observed in the model and the number defined in the Chemical Component Dictionary. Similar counts are reported in the Torsion and Rings columns. '-' means no outliers of that kind were identified.

Mol	Type	Chain	Res	Link	Chirals	Torsions	Rings
4	DCP	B	421[A]	5	-	5/22/34/34	0/2/2/2

All (1) bond length outliers are listed below:

Mol	Chain	Res	Type	Atoms	Z	Observed(Å)	Ideal(Å)
4	B	421[A]	DCP	C6-C5	2.10	1.40	1.35

All (3) bond angle outliers are listed below:

Mol	Chain	Res	Type	Atoms	Z	Observed(°)	Ideal(°)
4	B	421[A]	DCP	O2B-PB-O3A	2.45	113.90	107.27
4	B	421[A]	DCP	O4'-C1'-N1	2.33	112.00	107.86
4	B	421[A]	DCP	C1'-N1-C2	-2.11	114.20	117.83

There are no chirality outliers.

All (5) torsion outliers are listed below:

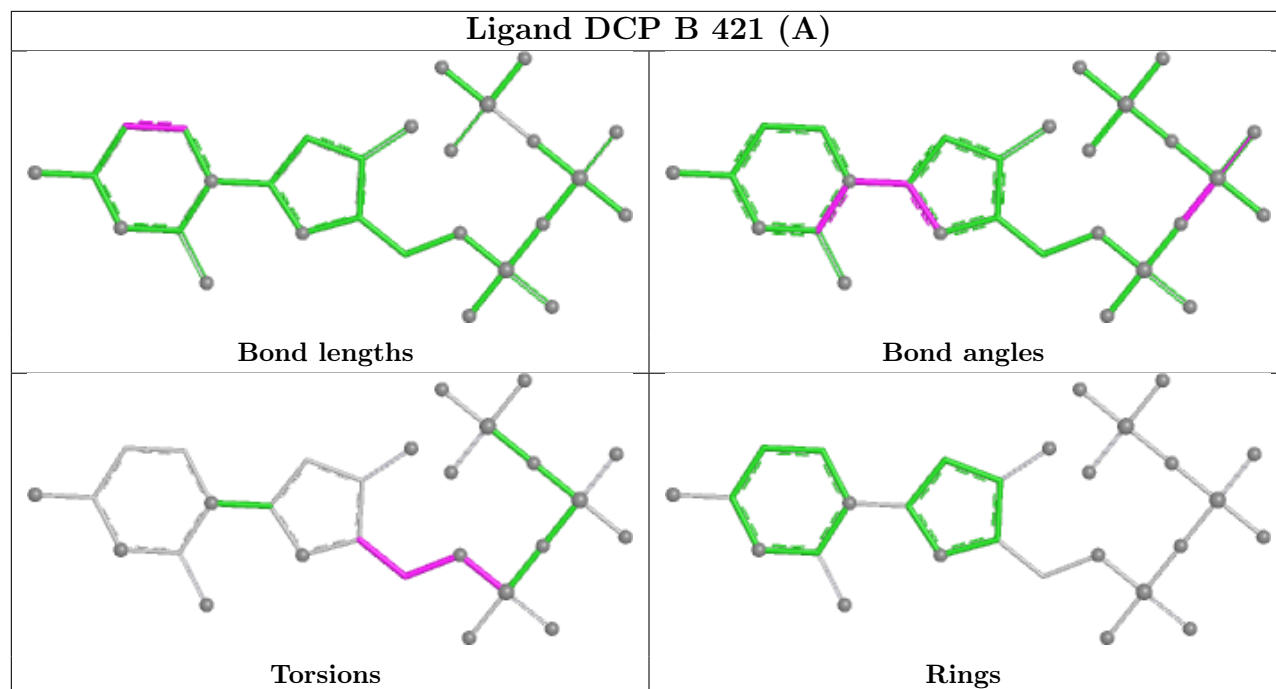
Mol	Chain	Res	Type	Atoms
4	B	421[A]	DCP	C5'-O5'-PA-O2A
4	B	421[A]	DCP	C5'-O5'-PA-O3A
4	B	421[A]	DCP	O4'-C4'-C5'-O5'
4	B	421[A]	DCP	C3'-C4'-C5'-O5'
4	B	421[A]	DCP	C4'-C5'-O5'-PA

There are no ring outliers.

1 monomer is involved in 10 short contacts:

Mol	Chain	Res	Type	Clashes	Symm-Clashes
4	B	421[A]	DCP	10	0

The following is a two-dimensional graphical depiction of Mogul quality analysis of bond lengths, bond angles, torsion angles, and ring geometry for all instances of the Ligand of Interest. In addition, ligands with molecular weight > 250 and outliers as shown on the validation Tables will also be included. For torsion angles, if less than 5% of the Mogul distribution of torsion angles is within 10 degrees of the torsion angle in question, then that torsion angle is considered an outlier. Any bond that is central to one or more torsion angles identified as an outlier by Mogul will be highlighted in the graph. For rings, the root-mean-square deviation (RMSD) between the ring in question and similar rings identified by Mogul is calculated over all ring torsion angles. If the average RMSD is greater than 60 degrees and the minimal RMSD between the ring in question and any Mogul-identified rings is also greater than 60 degrees, then that ring is considered an outlier. The outliers are highlighted in purple. The color gray indicates Mogul did not find sufficient equivalents in the CSD to analyse the geometry.



5.7 Other polymers [i](#)

There are no such residues in this entry.

5.8 Polymer linkage issues [i](#)

There are no chain breaks in this entry.

6 Fit of model and data

6.1 Protein, DNA and RNA chains

In the following table, the column labelled ‘#RSRZ> 2’ contains the number (and percentage) of RSRZ outliers, followed by percent RSRZ outliers for the chain as percentile scores relative to all X-ray entries and entries of similar resolution. The OWAB column contains the minimum, median, 95th percentile and maximum values of the occupancy-weighted average B-factor per residue. The column labelled ‘Q< 0.9’ lists the number of (and percentage) of residues with an average occupancy less than 0.9.

Mol	Chain	Analysed	<RSRZ>	#RSRZ>2	OWAB(Å ²)	Q<0.9
1	B	380/420 (90%)	1.08	90 (23%) 2 2	13, 43, 106, 152	3 (0%)
2	T	7/11 (63%)	0.04	0 100 100	27, 31, 37, 37	0
3	P	7/7 (100%)	-0.00	0 100 100	25, 30, 40, 44	0
All	All	394/438 (89%)	1.04	90 (22%) 2 2	13, 42, 106, 152	3 (0%)

All (90) RSRZ outliers are listed below:

Mol	Chain	Res	Type	RSRZ
1	B	333	CYS	7.3
1	B	401[A]	PHE	6.7
1	B	145	SER	6.1
1	B	315	VAL	5.6
1	B	27	SER	5.4
1	B	73	LEU	5.4
1	B	61	TYR	5.0
1	B	86	GLU	4.9
1	B	148	LEU	4.7
1	B	149	SER	4.6
1	B	88	CYS	4.6
1	B	85	LYS	4.4
1	B	89	PRO	4.3
1	B	319	ASN	4.3
1	B	144	GLN	4.0
1	B	349	TYR	3.9
1	B	377	TYR	3.9
1	B	385	ASP	3.9
1	B	81	VAL	3.9
1	B	347	ARG	3.8
1	B	146	ASP	3.8
1	B	74	GLY	3.7
1	B	244	TYR	3.7

Continued on next page...

Continued from previous page...

Mol	Chain	Res	Type	RSRZ
1	B	52	ASP	3.7
1	B	336	GLY	3.6
1	B	300	GLN	3.5
1	B	372	LEU	3.5
1	B	51	LYS	3.5
1	B	367	HIS	3.4
1	B	376	ASN	3.3
1	B	84	ALA	3.3
1	B	379	VAL	3.3
1	B	370	GLN	3.3
1	B	368	VAL	3.1
1	B	398	LYS	3.1
1	B	160	ASN	3.1
1	B	62	LEU	3.0
1	B	46	SER	3.0
1	B	350	SER	3.0
1	B	399	MET	2.9
1	B	142	GLN	2.9
1	B	381	THR	2.8
1	B	397	VAL	2.8
1	B	326	ALA	2.8
1	B	147	GLU	2.8
1	B	309	LYS	2.7
1	B	312	SER	2.7
1	B	236	ILE	2.7
1	B	152	THR	2.7
1	B	272	GLU	2.6
1	B	356	GLY	2.6
1	B	90	GLN	2.6
1	B	270	GLU	2.6
1	B	330	ASN	2.6
1	B	383	MET	2.5
1	B	332	VAL	2.5
1	B	48	PRO	2.5
1	B	92	VAL	2.5
1	B	54	PRO	2.5
1	B	49	GLU	2.4
1	B	402	HIS	2.4
1	B	308	PHE	2.4
1	B	395	VAL	2.4
1	B	138	LYS	2.4
1	B	340	HIS	2.3

Continued on next page...

Continued from previous page...

Mol	Chain	Res	Type	RSRZ
1	B	71	ARG	2.3
1	B	348	ARG	2.2
1	B	251	GLU	2.2
1	B	80	ASN	2.2
1	B	79	MET	2.2
1	B	306	ASP	2.2
1	B	391	PHE	2.2
1	B	414	LYS	2.2
1	B	91	LEU	2.2
1	B	325	LEU	2.2
1	B	400	PRO	2.2
1	B	317	ALA	2.2
1	B	271	LYS	2.2
1	B	369	ILE	2.1
1	B	75	VAL	2.1
1	B	404	THR	2.1
1	B	366	SER	2.1
1	B	280	ARG	2.1
1	B	313	SER	2.1
1	B	133	THR	2.1
1	B	324	LEU	2.1
1	B	94	VAL	2.0
1	B	143	LEU	2.0
1	B	413	LEU	2.0
1	B	396	ASN	2.0

6.2 Non-standard residues in protein, DNA, RNA chains ⓘ

In the following table, the Atoms column lists the number of modelled atoms in the group and the number defined in the chemical component dictionary. The B-factors column lists the minimum, median, 95th percentile and maximum values of B factors of atoms in the group. The column labelled 'Q<0.9' lists the number of atoms with occupancy less than 0.9.

Mol	Type	Chain	Res	Atoms	RSCC	RSR	B-factors(Å ²)	Q<0.9
2	8OG	T	840[A]	23/24	0.78	0.18	40,44,51,56	23
2	8OG	T	840[B]	23/24	0.78	0.18	37,43,50,54	23

6.3 Carbohydrates ⓘ

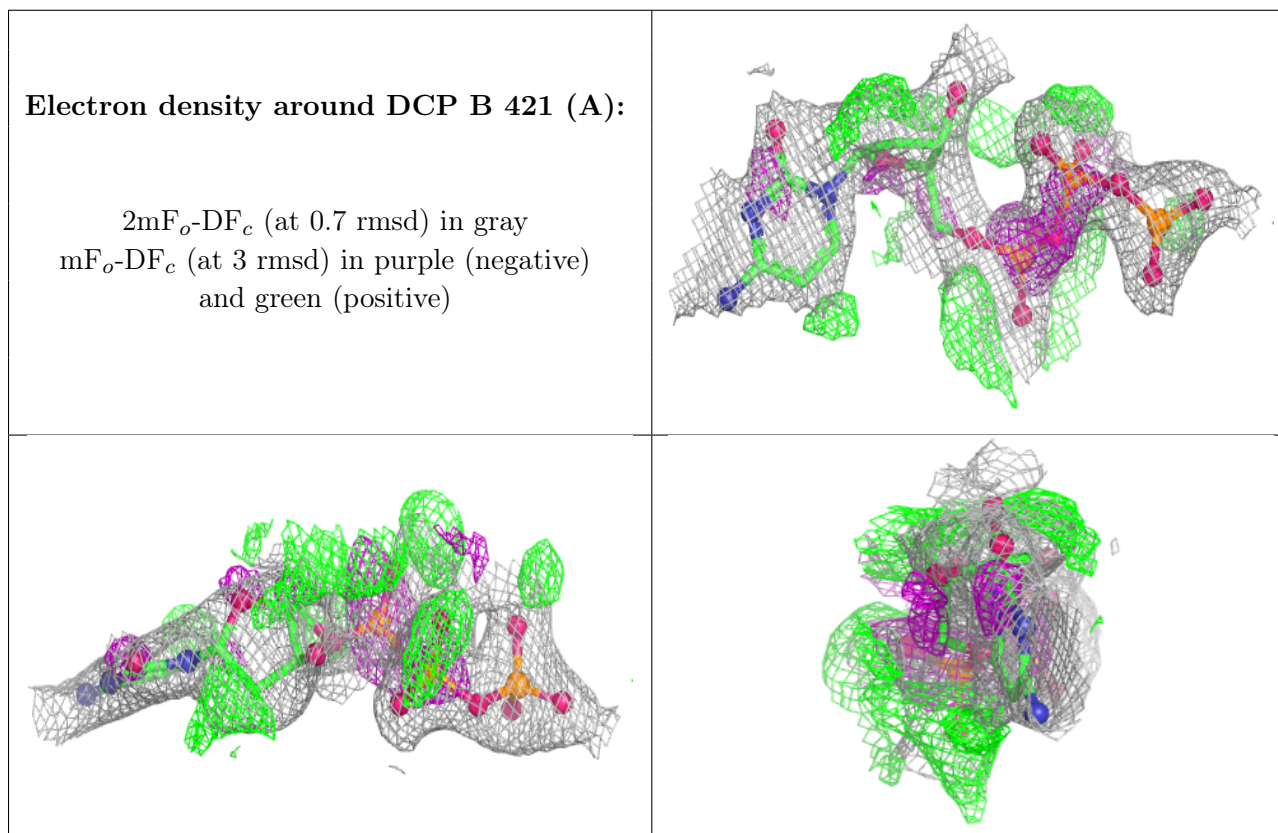
There are no oligosaccharides in this entry.

6.4 Ligands [i](#)

In the following table, the Atoms column lists the number of modelled atoms in the group and the number defined in the chemical component dictionary. The B-factors column lists the minimum, median, 95th percentile and maximum values of B factors of atoms in the group. The column labelled 'Q< 0.9' lists the number of atoms with occupancy less than 0.9.

Mol	Type	Chain	Res	Atoms	RSCC	RSR	B-factors(Å ²)	Q<0.9
4	DCP	B	421[A]	28/28	0.78	0.17	24,36,41,43	28
5	MG	B	423	1/1	0.90	0.10	27,27,27,27	0
5	MG	B	422	1/1	0.99	0.04	21,21,21,21	0

The following is a graphical depiction of the model fit to experimental electron density of all instances of the Ligand of Interest. In addition, ligands with molecular weight > 250 and outliers as shown on the geometry validation Tables will also be included. Each fit is shown from different orientation to approximate a three-dimensional view.



6.5 Other polymers [i](#)

There are no such residues in this entry.