



Full wwPDB X-ray Structure Validation Report ⓘ

Mar 5, 2026 – 06:36 AM UTC

PDB ID : 3SD0 / pdb_00003sd0
Title : Identification of a Glycogen Synthase Kinase-3b Inhibitor that Attenuates Hyperactivity in CLOCK Mutant Mice
Authors : Mesecar, A.M.; Walters, R.L.
Deposited on : 2011-06-08
Resolution : 2.70 Å(reported)

This is a Full wwPDB X-ray Structure Validation Report for a publicly released PDB entry.

We welcome your comments at validation@mail.wwpdb.org

A user guide is available at

<https://www.wwpdb.org/validation/2017/XrayValidationReportHelp>

with specific help available everywhere you see the ⓘ symbol.

The types of validation reports are described at

<http://www.wwpdb.org/validation/2017/FAQs#types>.

The following versions of software and data (see [references ⓘ](#)) were used in the production of this report:

MolProbity	:	4-5-2 with Phenix2.0
Mogul	:	2022.3.0, CSD as543be (2022)
Xtriage (Phenix)	:	2.0
EDS	:	3.0
Buster-report	:	wwPDB partial adaption of 1.1.7 (2018)
Percentile statistics	:	20250101.v01 (using entries in the PDB archive January 1st 2025)
CCP4	:	9.0.010 (Gargrove)
Density-Fitness	:	1.0.12
Ideal geometry (proteins)	:	Engh & Huber (2001)
Ideal geometry (DNA, RNA)	:	Parkinson et al. (1996)
Validation Pipeline (wwPDB-VP)	:	2.49

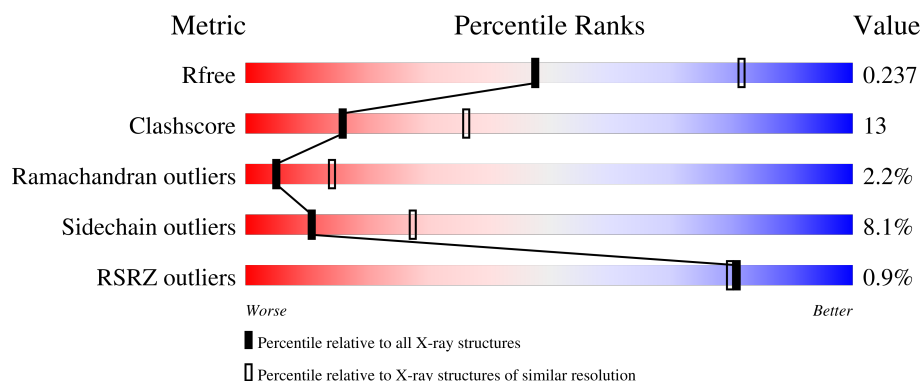
1 Overall quality at a glance

The following experimental techniques were used to determine the structure:

X-RAY DIFFRACTION



The reported resolution of this entry is 2.70 Å.

Percentile scores (ranging between 0-100) for global validation metrics of the entry are shown in the following graphic. The table shows the number of entries on which the scores are based.



Metric	Whole archive (#Entries)	Similar resolution (#Entries, resolution range(Å))
R_{free}	180053	3538 (2.70-2.70)
Clashscore	190562	3843 (2.70-2.70)
Ramachandran outliers	187476	3778 (2.70-2.70)
Sidechain outliers	187428	3778 (2.70-2.70)
RSRZ outliers	180081	3538 (2.70-2.70)

The table below summarises the geometric issues observed across the polymeric chains and their fit to the electron density. The red, orange, yellow and green segments of the lower bar indicate the fraction of residues that contain outliers for ≥ 3 , 2, 1 and 0 types of geometric quality criteria respectively. A grey segment represents the fraction of residues that are not modelled. The numeric value for each fraction is indicated below the corresponding segment, with a dot representing fractions $\leq 5\%$. The upper red bar (where present) indicates the fraction of residues that have poor fit to the electron density. The numeric value is given above the bar.

Mol	Chain	Length	Quality of chain
1	A	350	 70% 24% 6%
1	B	350	 75% 21% 4% 2%

2 Entry composition [i](#)

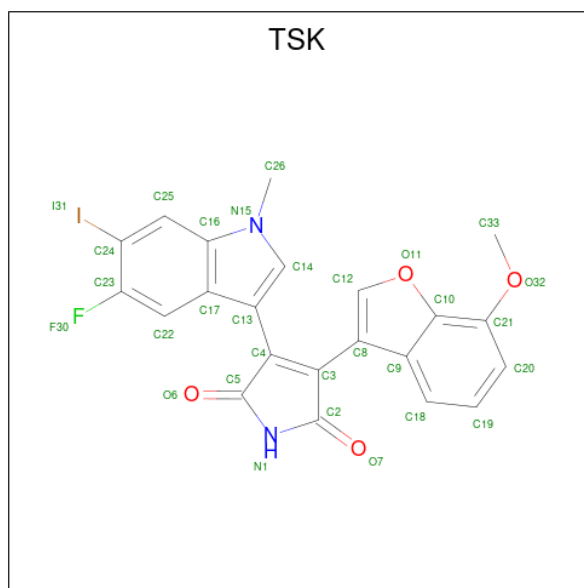
There are 4 unique types of molecules in this entry. The entry contains 5966 atoms, of which 0 are hydrogens and 0 are deuteriums.

In the tables below, the ZeroOcc column contains the number of atoms modelled with zero occupancy, the AltConf column contains the number of residues with at least one atom in alternate conformation and the Trace column contains the number of residues modelled with at most 2 atoms.

- Molecule 1 is a protein called Glycogen synthase kinase-3 beta.

Mol	Chain	Residues	Atoms					ZeroOcc	AltConf	Trace
1	A	350	Total	C	N	O	S	0	0	0
			2804	1804	481	508	11			
1	B	349	Total	C	N	O	S	0	0	0
			2788	1793	479	505	11			

- Molecule 2 is 3-(5-fluoro-6-iodo-1-methyl-1H-indol-3-yl)-4-(7-methoxy-1-benzofuran-3-yl)-1H-pyrrole-2,5-dione (CCD ID: TSK) (formula: C₂₂H₁₄FIN₂O₄).



Mol	Chain	Residues	Atoms						ZeroOcc	AltConf
2	A	1	Total	C	F	I	N	O	0	0
			30	22	1	1	2	4		
2	B	1	Total	C	F	I	N	O	0	0
			30	22	1	1	2	4		

- Molecule 3 is 4-(2-HYDROXYETHYL)-1-PIPERAZINE ETHANESULFONIC ACID (CCD ID: EPE) (formula: C₈H₁₈N₂O₄S).



Mol	Chain	Residues	Atoms					ZeroOcc	AltConf
3	A	1	Total	C	N	O	S	0	0
			15	8	2	4	1		
3	B	1	Total	C	N	O	S	0	0
			15	8	2	4	1		

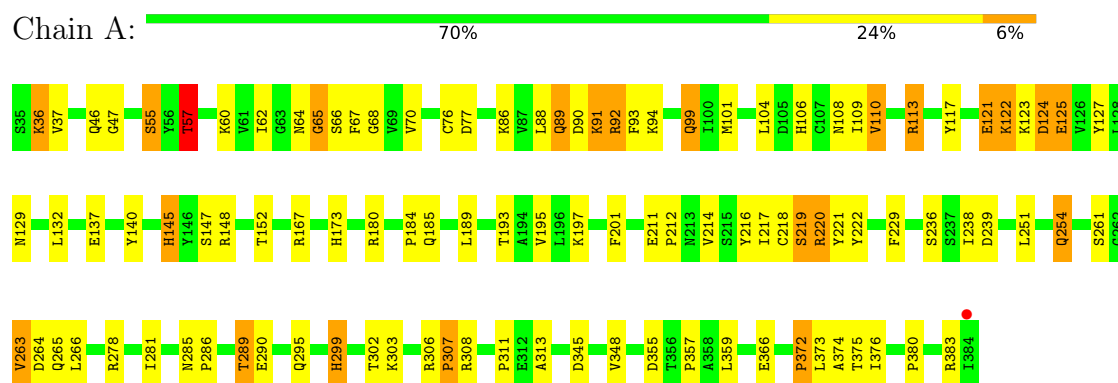
- Molecule 4 is water.

Mol	Chain	Residues	Atoms		ZeroOcc	AltConf
4	A	152	Total	O	0	0
			152	152		
4	B	132	Total	O	0	0
			132	132		

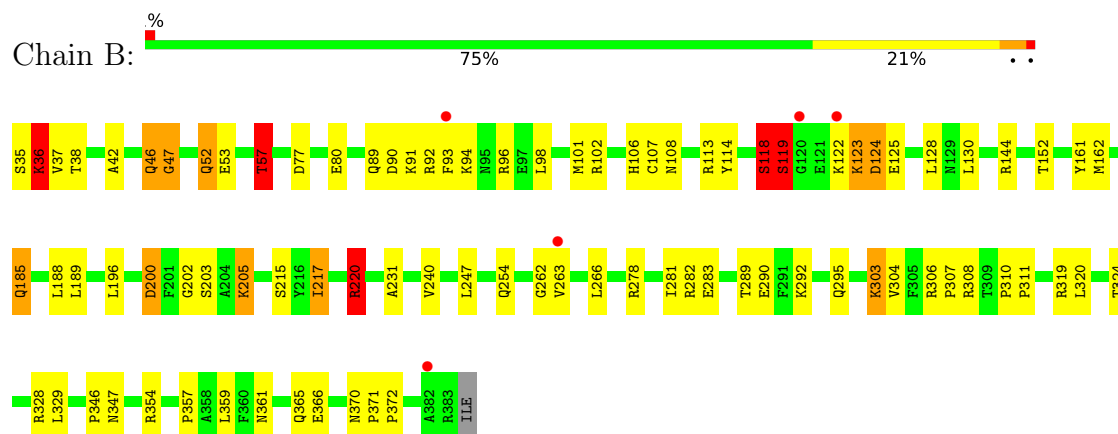
3 Residue-property plots

These plots are drawn for all protein, RNA, DNA and oligosaccharide chains in the entry. The first graphic for a chain summarises the proportions of the various outlier classes displayed in the second graphic. The second graphic shows the sequence view annotated by issues in geometry and electron density. Residues are color-coded according to the number of geometric quality criteria for which they contain at least one outlier: green = 0, yellow = 1, orange = 2 and red = 3 or more. A red dot above a residue indicates a poor fit to the electron density ($RSRZ > 2$). Stretches of 2 or more consecutive residues without any outlier are shown as a green connector. Residues present in the sample, but not in the model, are shown in grey.

- Molecule 1: Glycogen synthase kinase-3 beta



- Molecule 1: Glycogen synthase kinase-3 beta



4 Data and refinement statistics

Property	Value	Source
Space group	P 2 ₁ 2 ₁ 2 ₁	Depositor
Cell constants a, b, c, α , β , γ	88.50Å 96.01Å 124.25Å 90.00° 90.00° 90.00°	Depositor
Resolution (Å)	44.95 – 2.70 44.95 – 2.70	Depositor EDS
% Data completeness (in resolution range)	97.4 (44.95-2.70) 97.3 (44.95-2.70)	Depositor EDS
R_{merge}	(Not available)	Depositor
R_{sym}	(Not available)	Depositor
$\langle I/\sigma(I) \rangle$ ¹	2.29 (at 2.69Å)	Xtriage
Refinement program	REFMAC 5.2.0019	Depositor
R, R_{free}	0.179 , 0.254 0.174 , 0.237	Depositor DCC
R_{free} test set	1473 reflections (5.08%)	wwPDB-VP
Wilson B-factor (Å ²)	51.8	Xtriage
Anisotropy	0.689	Xtriage
Bulk solvent k_{sol} (e/Å ³), B_{sol} (Å ²)	0.34 , 54.0	EDS
L-test for twinning ²	$\langle L \rangle = 0.49$, $\langle L^2 \rangle = 0.32$	Xtriage
Estimated twinning fraction	No twinning to report.	Xtriage
F_o, F_c correlation	0.96	EDS
Total number of atoms	5966	wwPDB-VP
Average B, all atoms (Å ²)	57.0	wwPDB-VP

Xtriage's analysis on translational NCS is as follows: *The largest off-origin peak in the Patterson function is 4.68% of the height of the origin peak. No significant pseudotranslation is detected.*

¹Intensities estimated from amplitudes.

²Theoretical values of $\langle |L| \rangle$, $\langle L^2 \rangle$ for acentric reflections are 0.5, 0.333 respectively for untwinned datasets, and 0.375, 0.2 for perfectly twinned datasets.

5 Model quality

5.1 Standard geometry

Bond lengths and bond angles in the following residue types are not validated in this section: TSK, EPE

The Z score for a bond length (or angle) is the number of standard deviations the observed value is removed from the expected value. A bond length (or angle) with $|Z| > 5$ is considered an outlier worth inspection. RMSZ is the root-mean-square of all Z scores of the bond lengths (or angles).

Mol	Chain	Bond lengths		Bond angles	
		RMSZ	$\# Z > 5$	RMSZ	$\# Z > 5$
1	A	0.85	0/2875	1.06	4/3911 (0.1%)
1	B	0.84	0/2859	1.02	5/3891 (0.1%)
All	All	0.84	0/5734	1.04	9/7802 (0.1%)

Chiral center outliers are detected by calculating the chiral volume of a chiral center and verifying if the center is modelled as a planar moiety or with the opposite hand. A planarity outlier is detected by checking planarity of atoms in a peptide group, atoms in a mainchain group or atoms of a sidechain that are expected to be planar.

Mol	Chain	#Chirality outliers	#Planarity outliers
1	B	0	1

There are no bond length outliers.

All (9) bond angle outliers are listed below:

Mol	Chain	Res	Type	Atoms	Z	Observed($^{\circ}$)	Ideal($^{\circ}$)
1	B	118	SER	N-CA-C	6.97	119.45	108.79
1	B	371	PRO	N-CA-C	6.94	119.17	110.70
1	A	57	THR	CB-CA-C	-6.13	98.67	113.19
1	A	263	VAL	CB-CA-C	-5.56	104.77	111.88
1	A	299	HIS	N-CA-C	-5.47	103.17	110.07
1	B	57	THR	N-CA-C	5.29	116.70	109.18
1	B	304	VAL	N-CA-C	-5.18	106.09	111.58
1	A	219	SER	N-CA-C	5.05	117.94	110.46
1	B	202	GLY	N-CA-C	-5.05	108.70	115.32

There are no chirality outliers.

All (1) planarity outliers are listed below:

Mol	Chain	Res	Type	Group
1	B	118	SER	Peptide

5.2 Too-close contacts ⓘ

In the following table, the Non-H and H(model) columns list the number of non-hydrogen atoms and hydrogen atoms in the chain respectively. The H(added) column lists the number of hydrogen atoms added and optimized by MolProbity. The Clashes column lists the number of clashes within the asymmetric unit, whereas Symm-Clashes lists symmetry-related clashes.

Mol	Chain	Non-H	H(model)	H(added)	Clashes	Symm-Clashes
1	A	2804	0	2833	83	0
1	B	2788	0	2807	66	0
2	A	30	0	14	2	0
2	B	30	0	14	2	0
3	A	15	0	18	5	0
3	B	15	0	18	5	0
4	A	152	0	0	21	0
4	B	132	0	0	18	0
All	All	5966	0	5704	150	0

The all-atom clashscore is defined as the number of clashes found per 1000 atoms (including hydrogen atoms). The all-atom clashscore for this structure is 13.

All (150) close contacts within the same asymmetric unit are listed below, sorted by their clash magnitude.

Atom-1	Atom-2	Interatomic distance (Å)	Clash overlap (Å)
1:A:278:ARG:HB2	4:A:494:HOH:O	1.50	1.09
1:A:106:HIS:CD2	1:A:108:ASN:H	1.86	0.93
1:A:123:LYS:HB2	4:A:11:HOH:O	1.66	0.92
1:A:106:HIS:HD2	1:A:108:ASN:H	0.97	0.91
1:A:94:LYS:HB3	1:A:99:GLN:HE21	1.36	0.91
1:A:123:LYS:HA	1:A:124:ASP:C	2.00	0.87
1:A:220:ARG:HD2	1:B:220:ARG:HD2	1.54	0.87
1:B:144:ARG:HD2	4:B:403:HOH:O	1.74	0.86
1:B:346:PRO:HD3	4:B:462:HOH:O	1.75	0.84
1:A:220:ARG:HD2	1:B:220:ARG:CD	2.08	0.84
1:B:303:LYS:HB2	4:B:386:HOH:O	1.78	0.83
1:B:36:LYS:O	1:B:57:THR:HG22	1.80	0.80
1:A:93:PHE:CZ	1:B:292:LYS:HD3	2.17	0.78
1:A:106:HIS:HD2	1:A:108:ASN:N	1.81	0.74
3:B:401:EPE:H81	3:B:401:EPE:H101	1.70	0.73

Continued on next page...

Continued from previous page...

Atom-1	Atom-2	Interatomic distance (Å)	Clash overlap (Å)
1:A:345:ASP:O	1:A:348:VAL:HG12	1.89	0.72
1:A:216:TYR:HB2	1:B:262:GLY:HA3	1.73	0.71
1:A:94:LYS:HB3	1:A:99:GLN:NE2	2.07	0.69
1:B:98:LEU:O	1:B:102:ARG:HG3	1.93	0.68
1:A:383:ARG:HD3	4:A:421:HOH:O	1.92	0.68
3:A:401:EPE:H102	3:A:401:EPE:H31	1.74	0.68
1:B:96:ARG:NH1	1:B:205:LYS:HG2	2.09	0.68
1:B:220:ARG:HB3	4:B:459:HOH:O	1.95	0.67
1:A:372:PRO:O	1:A:374:ALA:N	2.28	0.66
1:B:107:CYS:HA	4:B:475:HOH:O	1.95	0.65
1:B:96:ARG:HH11	1:B:205:LYS:HG2	1.62	0.64
1:B:320:LEU:O	1:B:328:ARG:HG2	1.97	0.63
1:B:306:ARG:HB2	1:B:307:PRO:HD2	1.80	0.63
1:A:47:GLY:HA3	4:A:473:HOH:O	1.99	0.63
1:A:375:THR:HG22	4:A:491:HOH:O	1.99	0.62
1:A:113:ARG:HH11	1:A:113:ARG:HG2	1.63	0.62
1:B:106:HIS:HD2	1:B:108:ASN:H	1.49	0.61
1:B:144:ARG:HD2	4:B:4:HOH:O	2.00	0.61
1:B:185:GLN:HE21	1:B:185:GLN:H	1.49	0.61
1:B:106:HIS:CD2	1:B:108:ASN:H	2.19	0.60
1:A:113:ARG:HG2	1:A:113:ARG:NH1	2.16	0.60
1:B:89:GLN:HE21	1:B:90:ASP:N	1.99	0.59
1:A:66:SER:HA	4:B:487:HOH:O	2.01	0.59
1:A:101:MET:HA	1:A:101:MET:HE2	1.83	0.59
1:A:122:LYS:HA	1:A:123:LYS:HB3	1.86	0.58
1:A:193:THR:O	1:A:357:PRO:HG3	2.04	0.57
1:A:193:THR:OG1	1:A:195:VAL:HG23	2.06	0.56
1:B:200:ASP:HA	4:B:460:HOH:O	2.04	0.56
1:A:173:HIS:CE1	1:A:236:SER:HB3	2.41	0.56
1:B:283:GLU:HG2	1:B:324:THR:HG23	1.88	0.55
1:B:370:ASN:HD22	1:B:372:PRO:HD2	1.72	0.55
1:A:311:PRO:HD2	4:A:26:HOH:O	2.07	0.55
1:A:123:LYS:H	1:A:125:GLU:HB2	1.72	0.55
1:A:306:ARG:HD2	4:A:415:HOH:O	2.07	0.55
1:B:123:LYS:HG3	4:B:485:HOH:O	2.07	0.54
1:A:220:ARG:HD2	1:B:220:ARG:HD3	1.89	0.54
1:A:121:GLU:HB2	4:A:480:HOH:O	2.07	0.54
1:B:101:MET:HA	1:B:101:MET:HE2	1.90	0.53
1:A:137:GLU:HB2	1:A:189:LEU:O	2.09	0.53
1:B:283:GLU:HA	1:B:283:GLU:OE2	2.08	0.52
1:B:118:SER:O	1:B:119:SER:HB2	2.08	0.52

Continued on next page...

Continued from previous page...

Atom-1	Atom-2	Interatomic distance (Å)	Clash overlap (Å)
3:B:401:EPE:H51	3:B:401:EPE:H102	1.91	0.52
1:A:65:GLY:HA2	1:A:68:GLY:O	2.10	0.51
1:A:86:LYS:HE3	1:A:129:ASN:HD21	1.75	0.51
1:A:147:SER:HA	4:A:517:HOH:O	2.08	0.51
1:B:91:LYS:HB2	4:B:450:HOH:O	2.11	0.51
3:A:401:EPE:H102	3:A:401:EPE:C3	2.37	0.51
1:A:92:ARG:HD2	4:A:515:HOH:O	2.10	0.51
1:A:278:ARG:NH1	1:A:290:GLU:OE2	2.43	0.51
1:B:128:LEU:HD21	1:B:130:LEU:HD21	1.93	0.51
1:B:123:LYS:O	1:B:124:ASP:HB2	2.12	0.50
1:A:214:VAL:HG13	3:A:401:EPE:O2S	2.12	0.50
1:A:307:PRO:O	1:A:308:ARG:HB2	2.11	0.50
1:A:37:VAL:HG22	1:A:57:THR:HG23	1.94	0.50
1:A:380:PRO:HA	1:A:383:ARG:HE	1.77	0.50
1:B:203:SER:HA	3:B:401:EPE:H72	1.94	0.49
1:A:113:ARG:HH11	1:A:113:ARG:CG	2.26	0.49
1:A:67:PHE:HE1	1:A:70:VAL:HG23	1.77	0.49
1:B:46:GLN:O	1:B:47:GLY:O	2.30	0.49
1:A:92:ARG:CZ	1:B:295:GLN:HG3	2.43	0.49
1:B:188:LEU:O	1:B:196:LEU:HA	2.13	0.48
1:A:122:LYS:HG3	4:A:498:HOH:O	2.14	0.47
1:B:35:SER:HB2	4:B:388:HOH:O	2.13	0.47
1:A:121:GLU:O	1:A:122:LYS:O	2.31	0.47
1:A:121:GLU:CB	4:A:480:HOH:O	2.60	0.47
1:A:92:ARG:HG3	4:A:412:HOH:O	2.14	0.47
1:B:37:VAL:HA	1:B:57:THR:HG23	1.96	0.47
1:B:80:GLU:OE2	1:B:113:ARG:NH2	2.46	0.47
1:B:354:ARG:HD3	4:B:454:HOH:O	2.14	0.47
4:A:410:HOH:O	1:B:92:ARG:HD3	2.15	0.47
1:A:89:GLN:HE21	1:A:90:ASP:N	2.14	0.46
1:B:240:VAL:HG13	1:B:320:LEU:HD22	1.97	0.46
1:A:64:ASN:HB3	1:A:65:GLY:HA3	1.97	0.46
1:A:286:PRO:O	1:A:289:THR:HG23	2.15	0.46
1:A:295:GLN:HG3	4:A:410:HOH:O	2.16	0.46
1:A:303:LYS:HE2	4:A:394:HOH:O	2.16	0.46
2:B:400:TSK:H22	2:B:400:TSK:C8	2.45	0.46
1:B:365:GLN:HB3	4:B:404:HOH:O	2.14	0.46
1:A:238:ILE:HG13	1:A:239:ASP:N	2.31	0.45
1:A:264:ASP:HB3	4:B:428:HOH:O	2.16	0.45
1:B:203:SER:HA	3:B:401:EPE:C7	2.47	0.45
1:A:278:ARG:HH12	1:A:290:GLU:CD	2.25	0.45

Continued on next page...

Continued from previous page...

Atom-1	Atom-2	Interatomic distance (Å)	Clash overlap (Å)
1:A:180:ARG:NH2	3:A:401:EPE:O1S	2.47	0.45
1:A:36:LYS:O	1:A:57:THR:HG22	2.16	0.45
1:B:52:GLN:HE21	1:B:52:GLN:HB2	1.60	0.45
1:A:117:TYR:HA	1:A:127:TYR:O	2.17	0.45
1:A:221:TYR:HB2	1:A:222:TYR:CE2	2.52	0.45
1:A:281:ILE:HG21	1:A:289:THR:HA	2.00	0.45
1:B:185:GLN:H	1:B:185:GLN:NE2	2.14	0.45
1:B:357:PRO:O	1:B:359:LEU:HG	2.17	0.45
3:A:401:EPE:H72	4:A:459:HOH:O	2.16	0.44
1:B:215:SER:HB3	1:B:231:ALA:O	2.16	0.44
1:A:357:PRO:O	1:A:359:LEU:HG	2.17	0.44
1:B:370:ASN:HD22	1:B:370:ASN:C	2.25	0.44
1:B:125:GLU:HG2	4:B:412:HOH:O	2.18	0.44
1:B:217:ILE:H	1:B:217:ILE:HG13	1.64	0.44
3:B:401:EPE:H81	3:B:401:EPE:C10	2.45	0.44
1:B:106:HIS:HE1	1:B:366:GLU:OE2	2.01	0.44
1:B:278:ARG:NH2	1:B:290:GLU:OE2	2.50	0.44
1:A:220:ARG:CD	1:B:220:ARG:HD2	2.38	0.43
1:B:94:LYS:HB2	4:B:497:HOH:O	2.17	0.43
1:B:347:ASN:HB3	4:B:467:HOH:O	2.19	0.43
1:A:251:LEU:HD11	1:A:313:ALA:HB1	2.01	0.43
1:A:101:MET:HE3	1:A:201:PHE:CG	2.53	0.43
1:A:220:ARG:CD	1:B:220:ARG:CD	2.88	0.43
1:B:370:ASN:ND2	1:B:372:PRO:HD2	2.32	0.43
1:A:372:PRO:C	1:A:374:ALA:N	2.77	0.43
1:B:42:ALA:HB1	1:B:114:TYR:HB3	2.01	0.43
1:B:162:MET:HG3	1:B:247:LEU:HD13	2.01	0.43
1:B:161:TYR:CE1	1:B:189:LEU:HD22	2.55	0.42
1:A:108:ASN:O	1:A:197:LYS:HA	2.19	0.42
1:A:278:ARG:CZ	4:A:494:HOH:O	2.68	0.42
1:B:319:ARG:HB3	1:B:329:LEU:HG	2.02	0.42
1:A:91:LYS:HE3	4:A:392:HOH:O	2.20	0.42
1:A:92:ARG:HG2	4:A:509:HOH:O	2.20	0.42
1:A:229:PHE:O	1:A:285:ASN:ND2	2.52	0.42
1:B:306:ARG:HB2	1:B:307:PRO:CD	2.49	0.42
1:A:124:ASP:HB3	1:A:125:GLU:H	1.44	0.42
1:A:62:ILE:O	2:A:400:TSK:I31	3.08	0.41
1:A:140:TYR:HB2	1:A:184:PRO:HB2	2.02	0.41
1:B:281:ILE:HG21	1:B:289:THR:HA	2.01	0.41
1:A:211:GLU:HA	1:A:212:PRO:HD2	1.92	0.41
1:A:254:GLN:HE21	1:A:254:GLN:HB3	1.58	0.41

Continued on next page...

Continued from previous page...

Atom-1	Atom-2	Interatomic distance (Å)	Clash overlap (Å)
1:B:308:ARG:HA	4:B:408:HOH:O	2.21	0.41
1:A:145:HIS:HD2	4:A:23:HOH:O	2.03	0.41
1:A:261:SER:O	1:A:265:GLN:HG3	2.21	0.41
1:A:101:MET:HE2	1:A:104:LEU:HD12	2.03	0.41
1:A:55:SER:HB2	1:A:76:CYS:HB2	2.03	0.41
1:A:167:ARG:NE	1:A:366:GLU:OE2	2.51	0.41
1:A:110:VAL:HG13	1:A:132:LEU:HD22	2.02	0.40
2:A:400:TSK:H22	2:A:400:TSK:C8	2.50	0.40
1:A:220:ARG:O	1:A:221:TYR:HB2	2.21	0.40
1:B:310:PRO:HA	1:B:311:PRO:HD3	1.85	0.40
1:B:361:ASN:OD1	1:B:361:ASN:N	2.54	0.40
2:B:400:TSK:H22	2:B:400:TSK:C9	2.51	0.40

There are no symmetry-related clashes.

5.3 Torsion angles ⓘ

5.3.1 Protein backbone ⓘ

In the following table, the Percentiles column shows the percent Ramachandran outliers of the chain as a percentile score with respect to all X-ray entries followed by that with respect to entries of similar resolution.

The Analysed column shows the number of residues for which the backbone conformation was analysed, and the total number of residues.

Mol	Chain	Analysed	Favoured	Allowed	Outliers	Percentiles	
1	A	348/350 (99%)	322 (92%)	19 (6%)	7 (2%)	6	16
1	B	347/350 (99%)	312 (90%)	27 (8%)	8 (2%)	5	13
All	All	695/700 (99%)	634 (91%)	46 (7%)	15 (2%)	5	14

All (15) Ramachandran outliers are listed below:

Mol	Chain	Res	Type
1	A	122	LYS
1	A	125	GLU
1	A	373	LEU
1	B	77	ASP
1	B	119	SER
1	B	122	LYS

Continued on next page...

Continued from previous page...

Mol	Chain	Res	Type
1	B	220	ARG
1	B	47	GLY
1	A	65	GLY
1	A	124	ASP
1	B	36	LYS
1	B	124	ASP
1	A	218	CYS
1	B	200	ASP
1	A	307	PRO

5.3.2 Protein sidechains ⓘ

In the following table, the Percentiles column shows the percent sidechain outliers of the chain as a percentile score with respect to all X-ray entries followed by that with respect to entries of similar resolution.

The Analysed column shows the number of residues for which the sidechain conformation was analysed, and the total number of residues.

Mol	Chain	Analysed	Rotameric	Outliers	Percentiles	
1	A	312/312 (100%)	281 (90%)	31 (10%)	7	19
1	B	309/312 (99%)	290 (94%)	19 (6%)	17	40
All	All	621/624 (100%)	571 (92%)	50 (8%)	11	27

All (50) residues with a non-rotameric sidechain are listed below:

Mol	Chain	Res	Type
1	A	36	LYS
1	A	46	GLN
1	A	55	SER
1	A	57	THR
1	A	60	LYS
1	A	77	ASP
1	A	88	LEU
1	A	89	GLN
1	A	91	LYS
1	A	92	ARG
1	A	99	GLN
1	A	109	ILE
1	A	110	VAL
1	A	113	ARG

Continued on next page...

Continued from previous page...

Mol	Chain	Res	Type
1	A	121	GLU
1	A	145	HIS
1	A	148	ARG
1	A	152	THR
1	A	185	GLN
1	A	217	ILE
1	A	219	SER
1	A	220	ARG
1	A	254	GLN
1	A	263	VAL
1	A	266	LEU
1	A	289	THR
1	A	299	HIS
1	A	302	THR
1	A	355	ASP
1	A	372	PRO
1	A	376	ILE
1	B	36	LYS
1	B	38	THR
1	B	46	GLN
1	B	52	GLN
1	B	53	GLU
1	B	57	THR
1	B	93	PHE
1	B	119	SER
1	B	123	LYS
1	B	152	THR
1	B	185	GLN
1	B	205	LYS
1	B	217	ILE
1	B	220	ARG
1	B	254	GLN
1	B	263	VAL
1	B	266	LEU
1	B	282	ARG
1	B	303	LYS

Sometimes sidechains can be flipped to improve hydrogen bonding and reduce clashes. All (18) such sidechains are listed below:

Mol	Chain	Res	Type
1	A	72	GLN
1	A	89	GLN

Continued on next page...

Continued from previous page...

Mol	Chain	Res	Type
1	A	99	GLN
1	A	106	HIS
1	A	108	ASN
1	A	129	ASN
1	A	145	HIS
1	A	206	GLN
1	A	254	GLN
1	A	365	GLN
1	A	370	ASN
1	B	52	GLN
1	B	89	GLN
1	B	106	HIS
1	B	108	ASN
1	B	185	GLN
1	B	254	GLN
1	B	370	ASN

5.3.3 RNA [i](#)

There are no RNA molecules in this entry.

5.4 Non-standard residues in protein, DNA, RNA chains [i](#)

There are no non-standard protein/DNA/RNA residues in this entry.

5.5 Carbohydrates [i](#)

There are no oligosaccharides in this entry.

5.6 Ligand geometry [i](#)

4 ligands are modelled in this entry.

In the following table, the Counts columns list the number of bonds (or angles) for which Mogul statistics could be retrieved, the number of bonds (or angles) that are observed in the model and the number of bonds (or angles) that are defined in the Chemical Component Dictionary. The Link column lists molecule types, if any, to which the group is linked. The Z score for a bond length (or angle) is the number of standard deviations the observed value is removed from the expected value. A bond length (or angle) with $|Z| > 2$ is considered an outlier worth inspection. RMSZ is the root-mean-square of all Z scores of the bond lengths (or angles).

Mol	Type	Chain	Res	Link	Bond lengths			Bond angles		
					Counts	RMSZ	# Z > 2	Counts	RMSZ	# Z > 2
3	EPE	B	401	-	15,15,15	1.52	1 (6%)	19,20,20	2.13	7 (36%)
3	EPE	A	401	-	15,15,15	1.05	1 (6%)	19,20,20	2.28	8 (42%)
2	TSK	A	400	-	34,34,34	1.48	5 (14%)	44,52,52	3.93	19 (43%)
2	TSK	B	400	-	34,34,34	1.57	5 (14%)	44,52,52	3.90	20 (45%)

In the following table, the Chirals column lists the number of chiral outliers, the number of chiral centers analysed, the number of these observed in the model and the number defined in the Chemical Component Dictionary. Similar counts are reported in the Torsion and Rings columns. '-' means no outliers of that kind were identified.

Mol	Type	Chain	Res	Link	Chirals	Torsions	Rings
3	EPE	B	401	-	-	4/9/19/19	0/1/1/1
3	EPE	A	401	-	-	5/9/19/19	0/1/1/1
2	TSK	A	400	-	-	0/10/26/26	0/5/5/5
2	TSK	B	400	-	-	2/10/26/26	0/5/5/5

All (12) bond length outliers are listed below:

Mol	Chain	Res	Type	Atoms	Z	Observed(Å)	Ideal(Å)
3	B	401	EPE	C10-S	4.81	1.84	1.77
2	B	400	TSK	C12-C8	4.06	1.39	1.35
2	A	400	TSK	C12-C8	4.00	1.39	1.35
2	B	400	TSK	C16-N15	-3.55	1.33	1.38
2	A	400	TSK	O11-C12	3.53	1.48	1.38
3	A	401	EPE	C10-S	3.23	1.82	1.77
2	B	400	TSK	O11-C12	3.00	1.46	1.38
2	A	400	TSK	C16-N15	-2.63	1.34	1.38
2	A	400	TSK	C9-C8	2.60	1.50	1.45
2	A	400	TSK	O7-C2	2.43	1.28	1.23
2	B	400	TSK	O6-C5	2.34	1.28	1.23
2	B	400	TSK	C17-C16	-2.33	1.37	1.41

All (54) bond angle outliers are listed below:

Mol	Chain	Res	Type	Atoms	Z	Observed(°)	Ideal(°)
2	B	400	TSK	O11-C12-C8	-17.92	102.66	112.68
2	A	400	TSK	O11-C12-C8	-17.20	103.06	112.68
2	A	400	TSK	C12-C8-C3	-7.44	117.28	126.12
2	B	400	TSK	C12-C8-C3	-7.29	117.47	126.12
2	A	400	TSK	C5-N1-C2	-6.29	104.68	111.36

Continued on next page...

Continued from previous page...

Mol	Chain	Res	Type	Atoms	Z	Observed(°)	Ideal(°)
2	B	400	TSK	C22-C23-C24	-6.14	119.09	123.06
2	A	400	TSK	C22-C23-C24	-5.98	119.19	123.06
3	A	401	EPE	C5-N4-C3	5.29	120.24	108.84
2	B	400	TSK	C5-N1-C2	-5.27	105.76	111.36
2	A	400	TSK	C22-C17-C16	5.05	125.85	119.82
2	A	400	TSK	C17-C13-C14	5.05	110.84	106.29
2	A	400	TSK	C16-C17-C13	-5.04	101.87	106.76
2	B	400	TSK	F30-C23-C24	5.02	122.25	118.41
2	A	400	TSK	C13-C14-N15	-4.98	105.41	110.56
2	B	400	TSK	C33-O32-C21	4.57	124.22	117.51
2	B	400	TSK	O11-C10-C9	4.52	113.55	110.49
3	B	401	EPE	C5-N4-C3	4.49	118.52	108.84
2	B	400	TSK	C22-C17-C16	4.30	124.95	119.82
2	A	400	TSK	C17-C16-N15	4.30	110.54	107.91
2	B	400	TSK	C13-C14-N15	-4.05	106.37	110.56
2	B	400	TSK	C17-C16-N15	3.95	110.33	107.91
3	B	401	EPE	C7-N4-C3	3.88	121.57	111.24
2	A	400	TSK	C33-O32-C21	3.87	123.20	117.51
2	A	400	TSK	O11-C10-C9	3.86	113.11	110.49
2	A	400	TSK	C16-N15-C14	3.84	111.33	108.54
3	A	401	EPE	C6-C5-N4	3.79	118.28	110.65
3	A	401	EPE	O2S-S-C10	3.76	112.40	106.73
2	B	400	TSK	C16-C17-C13	-3.70	103.17	106.76
2	B	400	TSK	C16-N15-C14	3.63	111.17	108.54
2	A	400	TSK	C3-C2-N1	3.45	114.54	105.59
2	A	400	TSK	C25-C16-C17	-3.41	117.69	122.29
2	A	400	TSK	C4-C5-N1	3.37	114.32	105.59
3	A	401	EPE	C7-N4-C5	3.20	119.75	111.24
2	B	400	TSK	C4-C5-N1	3.18	113.83	105.59
2	B	400	TSK	C3-C2-N1	3.02	113.41	105.59
3	B	401	EPE	O3S-S-C10	2.89	111.65	106.00
2	B	400	TSK	C17-C13-C14	2.88	108.88	106.29
3	B	401	EPE	C7-N4-C5	2.82	118.76	111.24
2	A	400	TSK	C23-C24-I31	-2.79	118.17	120.72
3	B	401	EPE	O3S-S-O2S	-2.74	104.54	111.40
2	B	400	TSK	C25-C16-C17	-2.74	118.59	122.29
3	B	401	EPE	O1S-S-C10	2.63	110.71	106.73
3	A	401	EPE	O2S-S-O1S	-2.60	105.36	113.82
2	B	400	TSK	C26-N15-C16	-2.57	123.31	125.69
2	A	400	TSK	C8-C3-C4	2.51	134.58	130.98
3	A	401	EPE	O3S-S-C10	2.38	110.65	106.00
2	B	400	TSK	C18-C9-C10	2.20	122.24	119.41

Continued on next page...

Continued from previous page...

Mol	Chain	Res	Type	Atoms	Z	Observed(°)	Ideal(°)
3	A	401	EPE	C5-C6-N1	2.17	115.03	110.65
2	B	400	TSK	C19-C18-C9	-2.17	115.88	119.80
2	B	400	TSK	C20-C21-C10	-2.14	117.00	120.44
2	A	400	TSK	C18-C9-C8	2.14	137.74	133.81
2	A	400	TSK	O6-C5-C4	-2.14	121.71	129.43
3	A	401	EPE	C7-N4-C3	2.10	116.85	111.24
3	B	401	EPE	C2-C3-N4	2.08	114.84	110.65

There are no chirality outliers.

All (11) torsion outliers are listed below:

Mol	Chain	Res	Type	Atoms
3	A	401	EPE	C10-C9-N1-C2
3	A	401	EPE	C8-C7-N4-C3
3	A	401	EPE	C9-C10-S-O2S
3	A	401	EPE	C9-C10-S-O3S
3	B	401	EPE	C10-C9-N1-C6
3	B	401	EPE	C10-C9-N1-C2
3	B	401	EPE	N4-C7-C8-O8
3	A	401	EPE	C9-C10-S-O1S
3	B	401	EPE	S-C10-C9-N1
2	B	400	TSK	C17-C13-C4-C5
2	B	400	TSK	C14-C13-C4-C5

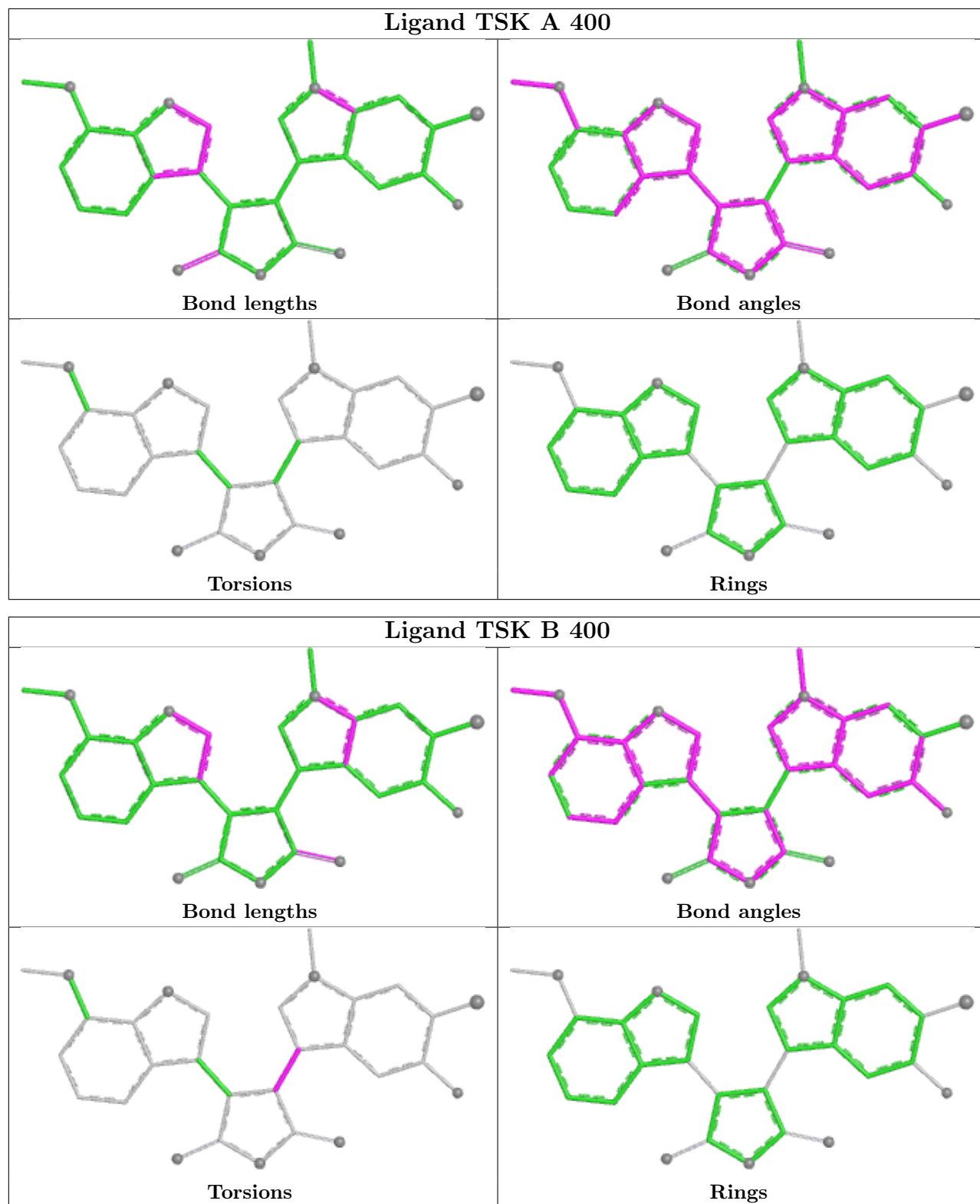
There are no ring outliers.

4 monomers are involved in 14 short contacts:

Mol	Chain	Res	Type	Clashes	Symm-Clashes
3	B	401	EPE	5	0
3	A	401	EPE	5	0
2	A	400	TSK	2	0
2	B	400	TSK	2	0

The following is a two-dimensional graphical depiction of Mogul quality analysis of bond lengths, bond angles, torsion angles, and ring geometry for all instances of the Ligand of Interest. In addition, ligands with molecular weight > 250 and outliers as shown on the validation Tables will also be included. For torsion angles, if less than 5% of the Mogul distribution of torsion angles is within 10 degrees of the torsion angle in question, then that torsion angle is considered an outlier. Any bond that is central to one or more torsion angles identified as an outlier by Mogul will be highlighted in the graph. For rings, the root-mean-square deviation (RMSD) between the ring in question and similar rings identified by Mogul is calculated over all ring torsion angles. If the average RMSD is greater than 60 degrees and the minimal RMSD between the ring in question and

any Mogul-identified rings is also greater than 60 degrees, then that ring is considered an outlier. The outliers are highlighted in purple. The color gray indicates Mogul did not find sufficient equivalents in the CSD to analyse the geometry.



5.7 Other polymers

There are no such residues in this entry.

5.8 Polymer linkage issues

There are no chain breaks in this entry.

6 Fit of model and data [i](#)

6.1 Protein, DNA and RNA chains [i](#)

In the following table, the column labelled ‘#RSRZ> 2’ contains the number (and percentage) of RSRZ outliers, followed by percent RSRZ outliers for the chain as percentile scores relative to all X-ray entries and entries of similar resolution. The OWAB column contains the minimum, median, 95th percentile and maximum values of the occupancy-weighted average B-factor per residue. The column labelled ‘Q< 0.9’ lists the number of (and percentage) of residues with an average occupancy less than 0.9.

Mol	Chain	Analysed	<RSRZ>	#RSRZ>2	OWAB(Å ²)	Q<0.9
1	A	350/350 (100%)	-0.49	1 (0%) 90 89	29, 50, 85, 129	2 (0%)
1	B	349/350 (99%)	-0.38	5 (1%) 73 72	32, 55, 94, 134	3 (0%)
All	All	699/700 (99%)	-0.44	6 (0%) 81 80	29, 52, 90, 134	5 (0%)

All (6) RSRZ outliers are listed below:

Mol	Chain	Res	Type	RSRZ
1	A	384	ILE	3.7
1	B	93	PHE	3.2
1	B	120	GLY	2.8
1	B	382	ALA	2.6
1	B	122	LYS	2.2
1	B	263	VAL	2.0

6.2 Non-standard residues in protein, DNA, RNA chains [i](#)

There are no non-standard protein/DNA/RNA residues in this entry.

6.3 Carbohydrates [i](#)

There are no oligosaccharides in this entry.

6.4 Ligands [i](#)

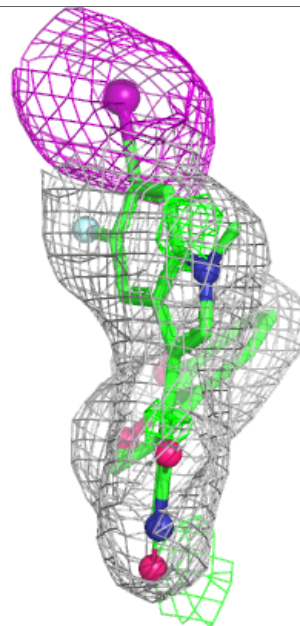
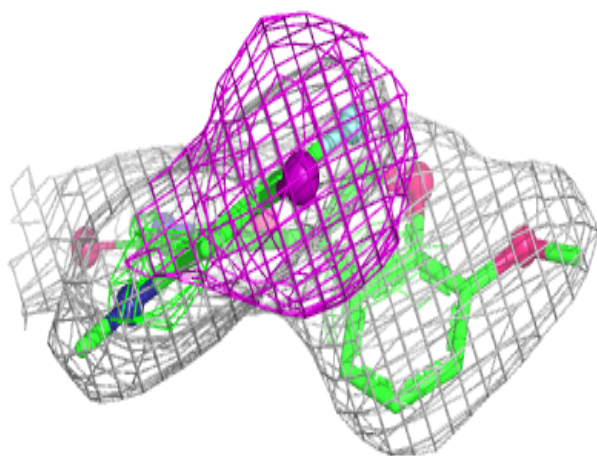
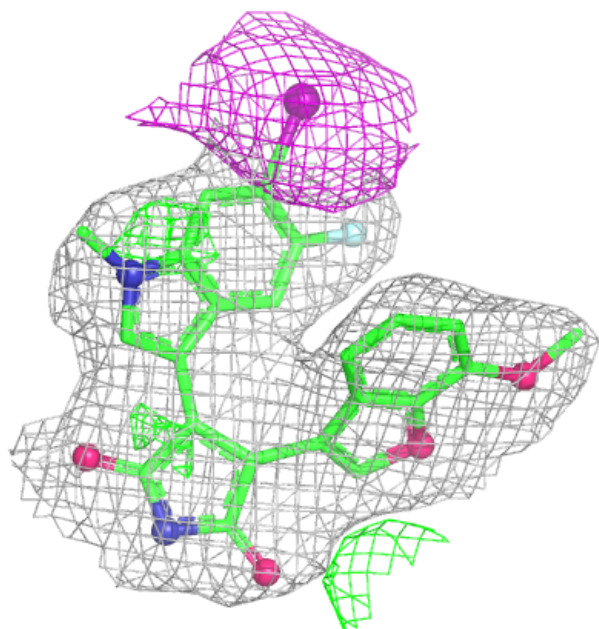
In the following table, the Atoms column lists the number of modelled atoms in the group and the number defined in the chemical component dictionary. The B-factors column lists the minimum, median, 95th percentile and maximum values of B factors of atoms in the group. The column labelled ‘Q< 0.9’ lists the number of atoms with occupancy less than 0.9.

Mol	Type	Chain	Res	Atoms	RSCC	RSR	B-factors(\AA^2)	Q<0.9
3	EPE	A	401	15/15	0.80	0.20	77,79,80,80	0
3	EPE	B	401	15/15	0.81	0.20	73,81,84,84	0
2	TSK	A	400	30/30	0.91	0.13	54,64,79,89	0
2	TSK	B	400	30/30	0.91	0.14	70,76,86,94	0

The following is a graphical depiction of the model fit to experimental electron density of all instances of the Ligand of Interest. In addition, ligands with molecular weight > 250 and outliers as shown on the geometry validation Tables will also be included. Each fit is shown from different orientation to approximate a three-dimensional view.

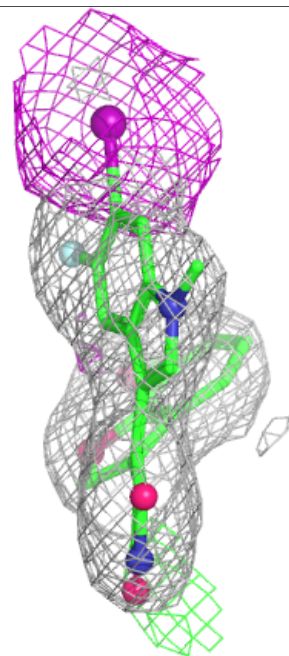
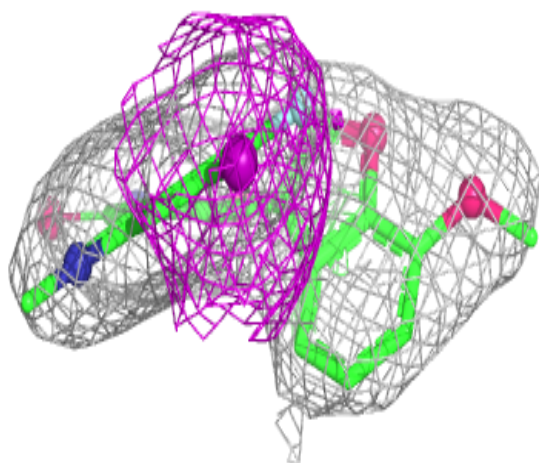
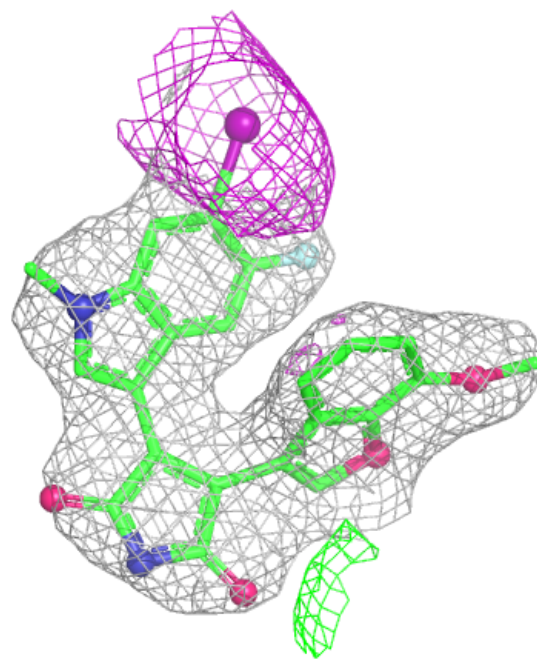
Electron density around TSK A 400:

2mF_o-DF_c (at 0.7 rmsd) in gray
 mF_o-DF_c (at 3 rmsd) in purple (negative)
 and green (positive)



Electron density around TSK B 400:

$2mF_o-DF_c$ (at 0.7 rmsd) in gray
 mF_o-DF_c (at 3 rmsd) in purple (negative)
and green (positive)



6.5 Other polymers [i](#)

There are no such residues in this entry.