



Full wwPDB X-ray Structure Validation Report ⓘ

Mar 7, 2026 – 01:32 AM UTC

PDB ID : 3WXB / pdb_00003wxb
Title : Crystal structure of NADPH bound carbonyl reductase from chicken fatty liver
Authors : Yoneda, K.; Sakuraba, H.; Fukuda, Y.; Sone, T.; Araki, T.; Ohshima, T.
Deposited on : 2014-07-29
Resolution : 1.98 Å(reported)

This is a Full wwPDB X-ray Structure Validation Report for a publicly released PDB entry.

We welcome your comments at validation@mail.wwpdb.org

A user guide is available at

<https://www.wwpdb.org/validation/2017/XrayValidationReportHelp>

with specific help available everywhere you see the ⓘ symbol.

The types of validation reports are described at

<http://www.wwpdb.org/validation/2017/FAQs#types>.

The following versions of software and data (see [references ⓘ](#)) were used in the production of this report:

MolProbity : 4-5-2 with Phenix2.0
Mogul : 2022.3.0, CSD as543be (2022)
Xtriage (Phenix) : 2.0
EDS : 3.0
Buster-report : wwPDB partial adaption of 1.1.7 (2018)
Percentile statistics : 20250101.v01 (using entries in the PDB archive January 1st 2025)
CCP4 : 9.0.010 (Gargrove)
Density-Fitness : 1.0.12
Ideal geometry (proteins) : Engh & Huber (2001)
Ideal geometry (DNA, RNA) : Parkinson et al. (1996)
Validation Pipeline (wwPDB-VP) : 2.49

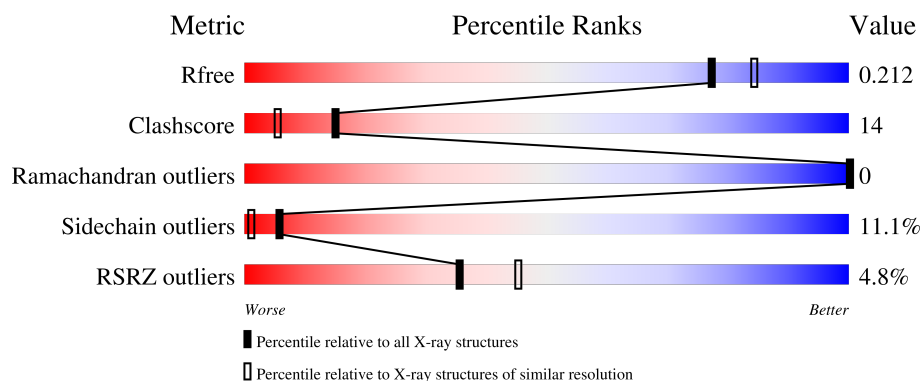
1 Overall quality at a glance

The following experimental techniques were used to determine the structure:

X-RAY DIFFRACTION

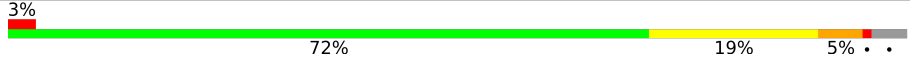

The reported resolution of this entry is 1.98 Å.

Percentile scores (ranging between 0-100) for global validation metrics of the entry are shown in the following graphic. The table shows the number of entries on which the scores are based.



Metric	Whole archive (#Entries)	Similar resolution (#Entries, resolution range(Å))
R_{free}	180053	1506 (1.98-1.98)
Clashscore	190562	1534 (1.98-1.98)
Ramachandran outliers	187476	1518 (1.98-1.98)
Sidechain outliers	187428	1518 (1.98-1.98)
RSRZ outliers	180081	1506 (1.98-1.98)

The table below summarises the geometric issues observed across the polymeric chains and their fit to the electron density. The red, orange, yellow and green segments of the lower bar indicate the fraction of residues that contain outliers for ≥ 3 , 2, 1 and 0 types of geometric quality criteria respectively. A grey segment represents the fraction of residues that are not modelled. The numeric value for each fraction is indicated below the corresponding segment, with a dot representing fractions $\leq 5\%$. The upper red bar (where present) indicates the fraction of residues that have poor fit to the electron density. The numeric value is given above the bar.

Mol	Chain	Length	Quality of chain
1	A	279	
1	B	279	

2 Entry composition [i](#)

There are 4 unique types of molecules in this entry. The entry contains 4258 atoms, of which 0 are hydrogens and 0 are deuteriums.

In the tables below, the ZeroOcc column contains the number of atoms modelled with zero occupancy, the AltConf column contains the number of residues with at least one atom in alternate conformation and the Trace column contains the number of residues modelled with at most 2 atoms.

- Molecule 1 is a protein called Uncharacterized protein.

Mol	Chain	Residues	Atoms					ZeroOcc	AltConf	Trace
1	A	269	Total	C	N	O	S	0	0	0
			2022	1269	359	381	13			
1	B	252	Total	C	N	O	S	0	0	0
			1907	1202	336	357	12			

There are 40 discrepancies between the modelled and reference sequences:

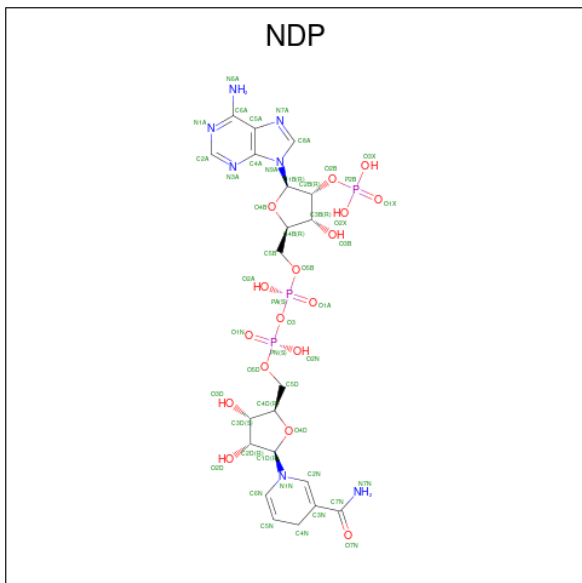
Chain	Residue	Modelled	Actual	Comment	Reference
A	-19	MET	-	expression tag	UNP F1N9C1
A	-18	GLY	-	expression tag	UNP F1N9C1
A	-17	SER	-	expression tag	UNP F1N9C1
A	-16	SER	-	expression tag	UNP F1N9C1
A	-15	HIS	-	expression tag	UNP F1N9C1
A	-14	HIS	-	expression tag	UNP F1N9C1
A	-13	HIS	-	expression tag	UNP F1N9C1
A	-12	HIS	-	expression tag	UNP F1N9C1
A	-11	HIS	-	expression tag	UNP F1N9C1
A	-10	HIS	-	expression tag	UNP F1N9C1
A	-9	SER	-	expression tag	UNP F1N9C1
A	-8	SER	-	expression tag	UNP F1N9C1
A	-7	GLY	-	expression tag	UNP F1N9C1
A	-6	LEU	-	expression tag	UNP F1N9C1
A	-5	VAL	-	expression tag	UNP F1N9C1
A	-4	PRO	-	expression tag	UNP F1N9C1
A	-3	ARG	-	expression tag	UNP F1N9C1
A	-2	GLY	-	expression tag	UNP F1N9C1
A	-1	SER	-	expression tag	UNP F1N9C1
A	0	HIS	-	expression tag	UNP F1N9C1
B	-19	MET	-	expression tag	UNP F1N9C1
B	-18	GLY	-	expression tag	UNP F1N9C1
B	-17	SER	-	expression tag	UNP F1N9C1
B	-16	SER	-	expression tag	UNP F1N9C1
B	-15	HIS	-	expression tag	UNP F1N9C1

Continued on next page...

Continued from previous page...

Chain	Residue	Modelled	Actual	Comment	Reference
B	-14	HIS	-	expression tag	UNP F1N9C1
B	-13	HIS	-	expression tag	UNP F1N9C1
B	-12	HIS	-	expression tag	UNP F1N9C1
B	-11	HIS	-	expression tag	UNP F1N9C1
B	-10	HIS	-	expression tag	UNP F1N9C1
B	-9	SER	-	expression tag	UNP F1N9C1
B	-8	SER	-	expression tag	UNP F1N9C1
B	-7	GLY	-	expression tag	UNP F1N9C1
B	-6	LEU	-	expression tag	UNP F1N9C1
B	-5	VAL	-	expression tag	UNP F1N9C1
B	-4	PRO	-	expression tag	UNP F1N9C1
B	-3	ARG	-	expression tag	UNP F1N9C1
B	-2	GLY	-	expression tag	UNP F1N9C1
B	-1	SER	-	expression tag	UNP F1N9C1
B	0	HIS	-	expression tag	UNP F1N9C1

- Molecule 2 is NADPH DIHYDRO-NICOTINAMIDE-ADENINE-DINUCLEOTIDE PHOSPHATE (CCD ID: NDP) (formula: $C_{21}H_{30}N_7O_{17}P_3$).



Mol	Chain	Residues	Atoms					ZeroOcc	AltConf
2	A	1	Total 48	C 21	N 7	O 17	P 3	0	0
2	B	1	Total 48	C 21	N 7	O 17	P 3	0	0

- Molecule 3 is 1,2-ETHANEDIOL (CCD ID: EDO) (formula: $\text{C}_2\text{H}_6\text{O}_2$).



Mol	Chain	Residues	Atoms			ZeroOcc	AltConf
3	A	1	Total	C	O	0	0
			4	2	2		

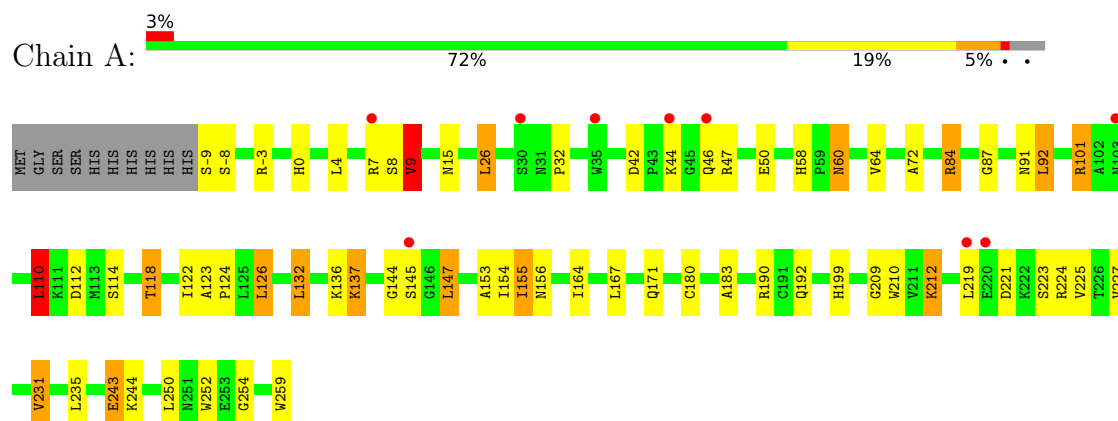
- Molecule 4 is water.

Mol	Chain	Residues	Atoms		ZeroOcc	AltConf
4	A	121	Total	O	0	0
			121	121		
4	B	108	Total	O	0	0
			108	108		

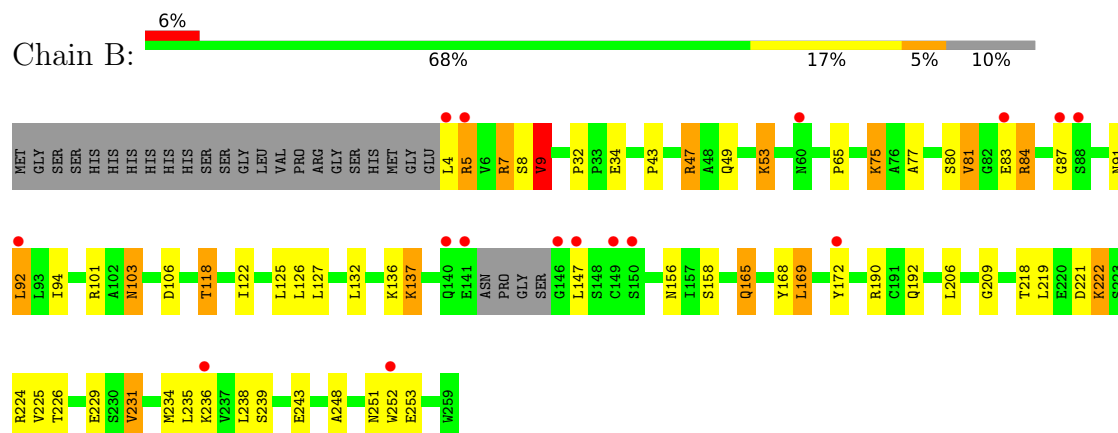
3 Residue-property plots [i](#)

These plots are drawn for all protein, RNA, DNA and oligosaccharide chains in the entry. The first graphic for a chain summarises the proportions of the various outlier classes displayed in the second graphic. The second graphic shows the sequence view annotated by issues in geometry and electron density. Residues are color-coded according to the number of geometric quality criteria for which they contain at least one outlier: green = 0, yellow = 1, orange = 2 and red = 3 or more. A red dot above a residue indicates a poor fit to the electron density ($RSRZ > 2$). Stretches of 2 or more consecutive residues without any outlier are shown as a green connector. Residues present in the sample, but not in the model, are shown in grey.

- Molecule 1: Uncharacterized protein



- Molecule 1: Uncharacterized protein



4 Data and refinement statistics

Property	Value	Source
Space group	P 32 2 1	Depositor
Cell constants a, b, c, α , β , γ	74.57Å 74.57Å 190.93Å 90.00° 90.00° 120.00°	Depositor
Resolution (Å)	36.59 – 1.98 36.59 – 1.98	Depositor EDS
% Data completeness (in resolution range)	(Not available) (36.59-1.98) 99.9 (36.59-1.98)	Depositor EDS
R_{merge}	(Not available)	Depositor
R_{sym}	(Not available)	Depositor
$\langle I/\sigma(I) \rangle$ ¹	9.86 (at 1.98Å)	Xtriage
Refinement program	CNS 1.1	Depositor
R, R_{free}	0.215 , 0.231 0.202 , 0.212	Depositor DCC
R_{free} test set	2191 reflections (5.01%)	wwPDB-VP
Wilson B-factor (Å ²)	29.9	Xtriage
Anisotropy	0.006	Xtriage
Bulk solvent k_{sol} (e/Å ³), B_{sol} (Å ²)	0.35 , 40.5	EDS
L-test for twinning ²	$\langle L \rangle = 0.50$, $\langle L^2 \rangle = 0.34$	Xtriage
Estimated twinning fraction	0.021 for -h,-k,l	Xtriage
F_o, F_c correlation	0.95	EDS
Total number of atoms	4258	wwPDB-VP
Average B, all atoms (Å ²)	35.0	wwPDB-VP

Xtriage's analysis on translational NCS is as follows: *The largest off-origin peak in the Patterson function is 5.04% of the height of the origin peak. No significant pseudotranslation is detected.*

¹Intensities estimated from amplitudes.

²Theoretical values of $\langle |L| \rangle$, $\langle L^2 \rangle$ for acentric reflections are 0.5, 0.333 respectively for untwinned datasets, and 0.375, 0.2 for perfectly twinned datasets.

5 Model quality

5.1 Standard geometry

Bond lengths and bond angles in the following residue types are not validated in this section: EDO, NDP

The Z score for a bond length (or angle) is the number of standard deviations the observed value is removed from the expected value. A bond length (or angle) with $|Z| > 5$ is considered an outlier worth inspection. RMSZ is the root-mean-square of all Z scores of the bond lengths (or angles).

Mol	Chain	Bond lengths		Bond angles	
		RMSZ	$\# Z > 5$	RMSZ	$\# Z > 5$
1	A	1.34	7/2057 (0.3%)	1.22	2/2783 (0.1%)
1	B	1.26	0/1938	1.17	3/2621 (0.1%)
All	All	1.30	7/3995 (0.2%)	1.20	5/5404 (0.1%)

All (7) bond length outliers are listed below:

Mol	Chain	Res	Type	Atoms	Z	Observed(Å)	Ideal(Å)
1	A	72	ALA	CA-CB	6.90	1.64	1.53
1	A	42	ASP	C-O	-6.81	1.20	1.23
1	A	180	CYS	C-O	5.41	1.30	1.24
1	A	64	VAL	CA-C	5.22	1.57	1.53
1	A	183	ALA	CA-CB	5.20	1.61	1.53
1	A	155	ILE	C-O	-5.18	1.18	1.24
1	A	110	LEU	C-O	-5.11	1.18	1.24

All (5) bond angle outliers are listed below:

Mol	Chain	Res	Type	Atoms	Z	Observed(°)	Ideal(°)
1	B	9	VAL	CB-CA-C	-8.83	94.91	110.71
1	A	9	VAL	CB-CA-C	-8.81	94.95	110.71
1	A	144	GLY	N-CA-C	7.02	119.29	111.85
1	B	248	ALA	N-CA-C	6.51	118.42	110.41
1	B	231	VAL	N-CA-C	5.52	116.29	110.72

There are no chirality outliers.

There are no planarity outliers.

5.2 Too-close contacts ⓘ

In the following table, the Non-H and H(model) columns list the number of non-hydrogen atoms and hydrogen atoms in the chain respectively. The H(added) column lists the number of hydrogen atoms added and optimized by MolProbity. The Clashes column lists the number of clashes within the asymmetric unit, whereas Symm-Clashes lists symmetry-related clashes.

Mol	Chain	Non-H	H(model)	H(added)	Clashes	Symm-Clashes
1	A	2022	0	2058	61	0
1	B	1907	0	1947	50	0
2	A	48	0	26	3	0
2	B	48	0	26	2	0
3	A	4	0	6	2	0
4	A	121	0	0	7	0
4	B	108	0	0	10	0
All	All	4258	0	4063	111	0

The all-atom clashscore is defined as the number of clashes found per 1000 atoms (including hydrogen atoms). The all-atom clashscore for this structure is 14.

All (111) close contacts within the same asymmetric unit are listed below, sorted by their clash magnitude.

Atom-1	Atom-2	Interatomic distance (Å)	Clash overlap (Å)
1:A:32:PRO:HG3	4:A:521:HOH:O	1.45	1.11
1:A:231:VAL:O	1:A:235:LEU:HD23	1.57	1.05
1:A:212:LYS:O	1:A:212:LYS:HD3	1.57	1.02
1:A:60:ASN:H	1:A:60:ASN:HD22	1.15	0.94
1:B:234:MET:O	1:B:238:LEU:HD13	1.68	0.94
1:B:84:ARG:CG	1:B:84:ARG:HH11	1.84	0.90
1:B:84:ARG:HH11	1:B:84:ARG:HG3	1.34	0.89
1:A:112:ASP:HB3	4:A:488:HOH:O	1.74	0.87
1:A:-9:SER:CB	1:A:-8:SER:HA	2.06	0.85
1:B:87:GLY:O	1:B:137:LYS:HD3	1.81	0.81
1:A:9:VAL:HG13	1:A:92:LEU:HB3	1.63	0.80
1:A:60:ASN:HD22	1:A:60:ASN:N	1.80	0.79
1:A:8:SER:H	1:A:91:ASN:HD22	1.31	0.78
1:A:212:LYS:O	1:A:212:LYS:CD	2.31	0.77
1:B:156:ASN:HD21	1:B:192:GLN:HE22	1.36	0.74
1:A:118:THR:HG22	4:B:449:HOH:O	1.88	0.74
1:A:210:TRP:CD2	1:A:224:ARG:HD3	2.24	0.73
1:B:84:ARG:HG3	1:B:84:ARG:NH1	2.03	0.72
1:A:-9:SER:HB3	1:A:-8:SER:C	2.16	0.70
1:A:231:VAL:O	1:A:235:LEU:CD2	2.36	0.70

Continued on next page...

Continued from previous page...

Atom-1	Atom-2	Interatomic distance (Å)	Clash overlap (Å)
1:A:-9:SER:HB3	1:A:-8:SER:CA	2.23	0.69
1:A:147:LEU:HB2	1:A:243:GLU:CB	2.22	0.69
1:B:8:SER:H	1:B:91:ASN:HD22	1.40	0.68
1:A:132:LEU:HD13	1:A:136:LYS:HE3	1.77	0.67
1:A:210:TRP:CG	1:A:224:ARG:HD3	2.31	0.66
1:A:147:LEU:HB2	1:A:243:GLU:HB2	1.76	0.66
1:A:60:ASN:H	1:A:60:ASN:ND2	1.86	0.65
1:B:83:GLU:CG	4:B:500:HOH:O	2.43	0.65
1:A:-9:SER:HB2	1:A:-8:SER:HA	1.77	0.65
1:A:-9:SER:HB3	1:A:-8:SER:HA	1.78	0.64
1:A:190:ARG:NE	4:A:516:HOH:O	2.29	0.64
1:A:92:LEU:HD23	1:A:153:ALA:HB3	1.80	0.64
1:B:209:GLY:O	2:B:300:NDP:H42N	1.99	0.63
1:B:103:ASN:HD22	1:B:103:ASN:N	1.97	0.63
1:A:221:ASP:OD2	1:A:223:SER:HB2	1.99	0.62
1:A:-9:SER:CB	1:A:-8:SER:CA	2.76	0.61
1:A:114:SER:O	1:A:118:THR:HG23	2.01	0.61
1:A:84:ARG:HH11	1:A:84:ARG:CG	2.14	0.60
1:B:92:LEU:HD22	1:B:94:ILE:HG13	1.83	0.60
1:A:84:ARG:HH11	1:A:84:ARG:HG3	1.67	0.59
4:A:483:HOH:O	1:B:118:THR:HG22	2.03	0.59
1:A:137:LYS:NZ	4:A:495:HOH:O	2.36	0.58
1:A:7:ARG:HB3	1:A:91:ASN:HD21	1.69	0.57
1:A:156:ASN:HD21	1:A:192:GLN:HE22	1.52	0.57
1:B:32:PRO:HG3	4:B:473:HOH:O	2.04	0.57
1:B:77:ALA:O	1:B:81:VAL:HG13	2.03	0.57
1:A:171:GLN:H	1:A:171:GLN:CD	2.13	0.56
1:A:147:LEU:HD22	1:A:243:GLU:HB2	1.89	0.54
1:A:58:HIS:HB3	1:A:60:ASN:HD21	1.72	0.54
1:B:80:SER:O	1:B:83:GLU:HG2	2.06	0.54
1:B:7:ARG:HG2	1:B:91:ASN:HD21	1.72	0.54
1:B:47:ARG:NH1	4:B:506:HOH:O	2.42	0.53
1:A:84:ARG:HG3	1:A:84:ARG:NH1	2.25	0.52
1:B:156:ASN:HD21	1:B:192:GLN:NE2	2.05	0.52
1:B:4:LEU:HB2	1:B:239:SER:HB3	1.91	0.51
1:B:168:TYR:CE1	1:B:169:LEU:HD22	2.45	0.51
1:A:58:HIS:HB3	1:A:60:ASN:ND2	2.24	0.51
1:B:84:ARG:HG2	4:B:500:HOH:O	2.09	0.51
1:B:7:ARG:NH2	1:B:34:GLU:OE1	2.44	0.51
1:A:225:VAL:HG11	1:A:252:TRP:CZ2	2.46	0.50
1:B:147:LEU:HD22	1:B:243:GLU:HG2	1.93	0.50

Continued on next page...

Continued from previous page...

Atom-1	Atom-2	Interatomic distance (Å)	Clash overlap (Å)
1:A:190:ARG:HG3	1:A:190:ARG:HH11	1.76	0.50
1:A:132:LEU:HD22	1:A:136:LYS:HG3	1.93	0.50
1:B:226:THR:OG1	1:B:229:GLU:HG3	2.11	0.50
1:A:9:VAL:CG1	1:A:92:LEU:HB3	2.40	0.49
1:A:7:ARG:HB3	1:A:91:ASN:ND2	2.28	0.49
1:A:0:HIS:ND1	4:A:511:HOH:O	2.35	0.48
1:B:125:LEU:HD12	4:B:450:HOH:O	2.13	0.48
1:B:158:SER:O	2:B:300:NDP:H6N	2.14	0.48
1:A:164:ILE:CG2	1:B:190:ARG:HG3	2.44	0.48
1:B:168:TYR:CD1	1:B:169:LEU:HD22	2.49	0.47
1:B:83:GLU:HG2	4:B:500:HOH:O	2.10	0.47
1:A:-3:ARG:HD2	1:A:254:GLY:O	2.15	0.47
1:B:172:TYR:CE2	1:B:219:LEU:HD23	2.49	0.47
1:A:122:ILE:HG22	1:A:126:LEU:HD22	1.96	0.47
1:A:101:ARG:HD2	4:A:477:HOH:O	2.15	0.47
1:A:154:ILE:C	1:A:155:ILE:HD13	2.40	0.47
1:A:235:LEU:HD22	1:A:235:LEU:N	2.31	0.46
1:B:7:ARG:CG	1:B:91:ASN:HD21	2.29	0.46
1:A:123:ALA:HB3	1:A:124:PRO:HD3	1.98	0.46
1:B:252:TRP:CD1	1:B:252:TRP:H	2.33	0.46
1:B:75:LYS:HA	1:B:75:LYS:HD3	1.49	0.46
1:A:110:LEU:C	1:A:110:LEU:HD13	2.40	0.46
2:A:300:NDP:H41N	3:A:301:EDO:H22	1.97	0.46
1:A:9:VAL:HG21	1:A:26:LEU:HG	1.97	0.45
1:B:118:THR:HB	1:B:122:ILE:HD12	1.98	0.45
1:A:209:GLY:O	2:A:300:NDP:H42N	2.16	0.45
2:A:300:NDP:H41N	3:A:301:EDO:C2	2.47	0.44
1:B:9:VAL:HG13	1:B:92:LEU:HB3	2.00	0.44
1:A:15:ASN:ND2	1:A:47:ARG:HG2	2.32	0.44
1:B:234:MET:O	1:B:238:LEU:CD1	2.54	0.44
1:A:259:TRP:HZ3	1:B:165:GLN:OE1	2.01	0.44
1:A:190:ARG:HH11	1:A:190:ARG:CG	2.31	0.44
1:A:110:LEU:C	1:A:110:LEU:CD1	2.91	0.44
1:B:43:PRO:HG3	1:B:65:PRO:HG3	1.99	0.44
1:B:206:LEU:HD11	1:B:238:LEU:HD11	2.01	0.42
1:B:49:GLN:O	1:B:53:LYS:HG3	2.19	0.42
1:B:87:GLY:O	1:B:137:LYS:CD	2.61	0.42
1:A:212:LYS:O	1:A:212:LYS:CG	2.68	0.42
1:B:251:ASN:OD1	1:B:253:GLU:HG2	2.20	0.42
1:B:106:ASP:OD1	4:B:437:HOH:O	2.21	0.42
1:B:225:VAL:HG11	1:B:252:TRP:CZ2	2.55	0.41

Continued on next page...

Continued from previous page...

Atom-1	Atom-2	Interatomic distance (Å)	Clash overlap (Å)
1:A:227:VAL:O	1:A:231:VAL:HG13	2.19	0.41
1:B:221:ASP:HB3	1:B:224:ARG:HG3	2.02	0.41
1:A:87:GLY:O	1:A:137:LYS:HE2	2.21	0.41
1:B:172:TYR:HE2	1:B:219:LEU:HD23	1.85	0.41
1:A:199:HIS:HE1	4:B:416:HOH:O	2.03	0.41
1:B:5:ARG:HD2	1:B:5:ARG:O	2.21	0.41
1:B:84:ARG:HH11	1:B:84:ARG:HG2	1.76	0.41
1:B:222:LYS:HB2	1:B:222:LYS:HE3	1.84	0.40
1:B:236:LYS:HG2	4:B:420:HOH:O	2.21	0.40

There are no symmetry-related clashes.

5.3 Torsion angles [i](#)

5.3.1 Protein backbone [i](#)

In the following table, the Percentiles column shows the percent Ramachandran outliers of the chain as a percentile score with respect to all X-ray entries followed by that with respect to entries of similar resolution.

The Analysed column shows the number of residues for which the backbone conformation was analysed, and the total number of residues.

Mol	Chain	Analysed	Favoured	Allowed	Outliers	Percentiles	
1	A	267/279 (96%)	262 (98%)	5 (2%)	0	100	100
1	B	248/279 (89%)	242 (98%)	6 (2%)	0	100	100
All	All	515/558 (92%)	504 (98%)	11 (2%)	0	100	100

There are no Ramachandran outliers to report.

5.3.2 Protein sidechains [i](#)

In the following table, the Percentiles column shows the percent sidechain outliers of the chain as a percentile score with respect to all X-ray entries followed by that with respect to entries of similar resolution.

The Analysed column shows the number of residues for which the sidechain conformation was analysed, and the total number of residues.

Mol	Chain	Analysed	Rotameric	Outliers	Percentiles	
1	A	218/227 (96%)	194 (89%)	24 (11%)	6	1
1	B	205/227 (90%)	182 (89%)	23 (11%)	6	1
All	All	423/454 (93%)	376 (89%)	47 (11%)	6	1

All (47) residues with a non-rotameric sidechain are listed below:

Mol	Chain	Res	Type
1	A	4	LEU
1	A	9	VAL
1	A	26	LEU
1	A	44	LYS
1	A	46	GLN
1	A	50	GLU
1	A	60	ASN
1	A	84	ARG
1	A	92	LEU
1	A	101	ARG
1	A	110	LEU
1	A	118	THR
1	A	126	LEU
1	A	132	LEU
1	A	137	LYS
1	A	145	SER
1	A	147	LEU
1	A	167	LEU
1	A	212	LYS
1	A	219	LEU
1	A	231	VAL
1	A	243	GLU
1	A	244	LYS
1	A	250	LEU
1	B	5	ARG
1	B	7	ARG
1	B	9	VAL
1	B	47	ARG
1	B	53	LYS
1	B	75	LYS
1	B	81	VAL
1	B	84	ARG
1	B	92	LEU
1	B	101	ARG
1	B	103	ASN

Continued on next page...

Continued from previous page...

Mol	Chain	Res	Type
1	B	118	THR
1	B	126	LEU
1	B	127	LEU
1	B	132	LEU
1	B	136	LYS
1	B	137	LYS
1	B	165	GLN
1	B	169	LEU
1	B	218	THR
1	B	222	LYS
1	B	231	VAL
1	B	235	LEU

Sometimes sidechains can be flipped to improve hydrogen bonding and reduce clashes. All (12) such sidechains are listed below:

Mol	Chain	Res	Type
1	A	0	HIS
1	A	49	GLN
1	A	60	ASN
1	A	91	ASN
1	A	95	ASN
1	A	165	GLN
1	A	192	GLN
1	A	240	ASN
1	B	91	ASN
1	B	95	ASN
1	B	103	ASN
1	B	192	GLN

5.3.3 RNA ⓘ

There are no RNA molecules in this entry.

5.4 Non-standard residues in protein, DNA, RNA chains ⓘ

There are no non-standard protein/DNA/RNA residues in this entry.

5.5 Carbohydrates ⓘ

There are no oligosaccharides in this entry.

5.6 Ligand geometry

3 ligands are modelled in this entry.

In the following table, the Counts columns list the number of bonds (or angles) for which Mogul statistics could be retrieved, the number of bonds (or angles) that are observed in the model and the number of bonds (or angles) that are defined in the Chemical Component Dictionary. The Link column lists molecule types, if any, to which the group is linked. The Z score for a bond length (or angle) is the number of standard deviations the observed value is removed from the expected value. A bond length (or angle) with $|Z| > 2$ is considered an outlier worth inspection. RMSZ is the root-mean-square of all Z scores of the bond lengths (or angles).

Mol	Type	Chain	Res	Link	Bond lengths			Bond angles		
					Counts	RMSZ	# Z > 2	Counts	RMSZ	# Z > 2
2	NDP	A	300	-	51,52,52	2.14	19 (37%)	71,80,80	1.74	16 (22%)
2	NDP	B	300	-	51,52,52	2.37	16 (31%)	71,80,80	2.07	15 (21%)
3	EDO	A	301	-	3,3,3	0.80	0	2,2,2	1.19	0

In the following table, the Chirals column lists the number of chiral outliers, the number of chiral centers analysed, the number of these observed in the model and the number defined in the Chemical Component Dictionary. Similar counts are reported in the Torsion and Rings columns. '-' means no outliers of that kind were identified.

Mol	Type	Chain	Res	Link	Chirals	Torsions	Rings
2	NDP	A	300	-	-	7/34/77/77	0/5/5/5
2	NDP	B	300	-	-	8/34/77/77	0/5/5/5
3	EDO	A	301	-	-	1/1/1/1	-

All (35) bond length outliers are listed below:

Mol	Chain	Res	Type	Atoms	Z	Observed(Å)	Ideal(Å)
2	B	300	NDP	PA-O3	9.76	1.70	1.59
2	B	300	NDP	PN-O3	-5.90	1.53	1.59
2	B	300	NDP	C2A-N3A	5.38	1.43	1.33
2	A	300	NDP	PA-O3	4.80	1.64	1.59
2	A	300	NDP	C4N-C3N	-4.51	1.41	1.50
2	A	300	NDP	O4B-C4B	3.90	1.53	1.45
2	A	300	NDP	C6N-N1N	3.77	1.46	1.37
2	B	300	NDP	C2A-N1A	3.76	1.40	1.33
2	A	300	NDP	C1B-N9A	3.64	1.56	1.46
2	B	300	NDP	C4N-C5N	-3.63	1.39	1.49
2	A	300	NDP	P2B-O2B	3.55	1.65	1.59
2	A	300	NDP	C7N-C3N	-3.52	1.41	1.48
2	A	300	NDP	C5A-N7A	-3.47	1.32	1.39

Continued on next page...

Continued from previous page...

Mol	Chain	Res	Type	Atoms	Z	Observed(Å)	Ideal(Å)
2	B	300	NDP	C4N-C3N	-3.39	1.43	1.50
2	A	300	NDP	C4N-C5N	-3.26	1.40	1.49
2	B	300	NDP	C7N-C3N	-3.24	1.41	1.48
2	A	300	NDP	PA-O2A	-3.06	1.41	1.55
2	A	300	NDP	C2A-N3A	3.02	1.39	1.33
2	A	300	NDP	C6N-C5N	2.56	1.40	1.33
2	A	300	NDP	O3B-C3B	2.56	1.49	1.43
2	A	300	NDP	O4D-C1D	2.56	1.47	1.42
2	B	300	NDP	C6N-N1N	2.45	1.43	1.37
2	A	300	NDP	PA-O5B	-2.41	1.49	1.59
2	B	300	NDP	C6N-C5N	2.38	1.40	1.33
2	A	300	NDP	PN-O3	2.35	1.62	1.59
2	B	300	NDP	C2B-C1B	2.26	1.58	1.53
2	B	300	NDP	C5A-N7A	-2.25	1.35	1.39
2	B	300	NDP	C8A-N9A	-2.24	1.33	1.37
2	A	300	NDP	C5A-C6A	-2.19	1.34	1.41
2	B	300	NDP	C2N-C3N	2.12	1.41	1.35
2	A	300	NDP	C2A-N1A	2.09	1.37	1.33
2	B	300	NDP	P2B-O2X	-2.06	1.47	1.54
2	B	300	NDP	C1B-N9A	2.05	1.52	1.46
2	B	300	NDP	C5A-C4A	-2.03	1.35	1.39
2	A	300	NDP	C2D-C3D	-2.03	1.47	1.53

All (31) bond angle outliers are listed below:

Mol	Chain	Res	Type	Atoms	Z	Observed(°)	Ideal(°)
2	B	300	NDP	N3A-C2A-N1A	-8.53	115.67	128.58
2	A	300	NDP	N3A-C2A-N1A	-6.55	118.66	128.58
2	B	300	NDP	N9A-C8A-N7A	-4.68	107.30	113.94
2	B	300	NDP	C4A-C5A-N7A	-4.36	105.60	110.58
2	B	300	NDP	C5A-N7A-C8A	4.33	110.26	103.45
2	A	300	NDP	N9A-C8A-N7A	-3.99	108.27	113.94
2	A	300	NDP	C5A-C4A-N3A	-3.77	121.53	126.72
2	B	300	NDP	O2B-P2B-O1X	-3.77	95.91	109.33
2	A	300	NDP	O2B-P2B-O1X	-3.74	96.02	109.33
2	B	300	NDP	O4B-C1B-C2B	-3.68	100.26	106.59
2	B	300	NDP	C5A-C4A-N3A	-3.64	121.71	126.72
2	B	300	NDP	O4B-C1B-N9A	3.61	115.02	108.09
2	B	300	NDP	C2A-N3A-C4A	3.59	120.59	111.83
2	A	300	NDP	C5A-N7A-C8A	3.05	108.25	103.45
2	A	300	NDP	C2A-N3A-C4A	2.98	119.12	111.83
2	A	300	NDP	C5A-C4A-N9A	2.93	109.01	105.81

Continued on next page...

Continued from previous page...

Mol	Chain	Res	Type	Atoms	Z	Observed(°)	Ideal(°)
2	B	300	NDP	O2N-PN-O3	2.87	115.03	107.27
2	B	300	NDP	O4D-C1D-C2D	-2.77	100.69	106.62
2	A	300	NDP	O3-PA-O1A	-2.76	102.39	110.70
2	B	300	NDP	C5A-C4A-N9A	2.71	108.77	105.81
2	B	300	NDP	O4D-C4D-C5D	-2.68	100.74	109.33
2	B	300	NDP	O3X-P2B-O2X	2.67	117.83	107.80
2	A	300	NDP	C4A-C5A-N7A	-2.57	107.64	110.58
2	A	300	NDP	O2X-P2B-O1X	2.47	120.45	110.83
2	A	300	NDP	C2B-C1B-N9A	-2.42	109.77	113.75
2	A	300	NDP	O2A-PA-O3	2.22	113.29	107.27
2	B	300	NDP	C4A-N9A-C8A	2.16	108.00	105.74
2	A	300	NDP	O3X-P2B-O2X	2.09	115.66	107.80
2	A	300	NDP	O3D-C3D-C4D	-2.09	105.07	111.08
2	A	300	NDP	O3B-C3B-C4B	-2.03	105.24	111.08
2	A	300	NDP	C6A-C5A-C4A	2.02	119.93	117.18

There are no chirality outliers.

All (16) torsion outliers are listed below:

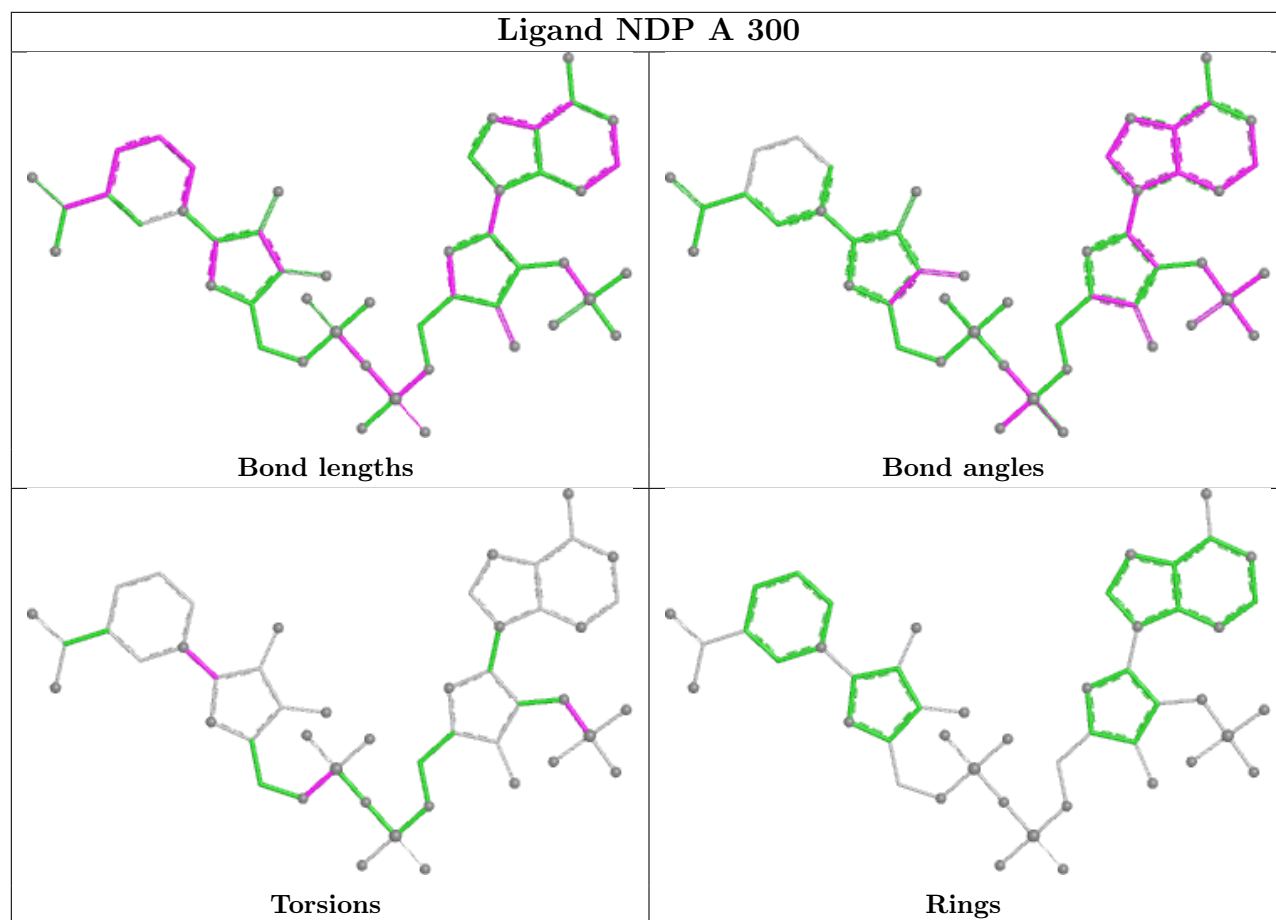
Mol	Chain	Res	Type	Atoms
2	A	300	NDP	C5D-O5D-PN-O3
2	A	300	NDP	C5D-O5D-PN-O2N
2	B	300	NDP	C5D-O5D-PN-O3
2	B	300	NDP	C5D-O5D-PN-O2N
2	A	300	NDP	O4D-C1D-N1N-C6N
2	B	300	NDP	O4D-C1D-N1N-C6N
3	A	301	EDO	O1-C1-C2-O2
2	B	300	NDP	C3B-C4B-C5B-O5B
2	A	300	NDP	C5D-O5D-PN-O1N
2	B	300	NDP	C5D-O5D-PN-O1N
2	A	300	NDP	C2B-O2B-P2B-O2X
2	B	300	NDP	C2B-O2B-P2B-O2X
2	B	300	NDP	C2B-O2B-P2B-O1X
2	B	300	NDP	O4B-C4B-C5B-O5B
2	A	300	NDP	C2B-O2B-P2B-O3X
2	A	300	NDP	C2B-O2B-P2B-O1X

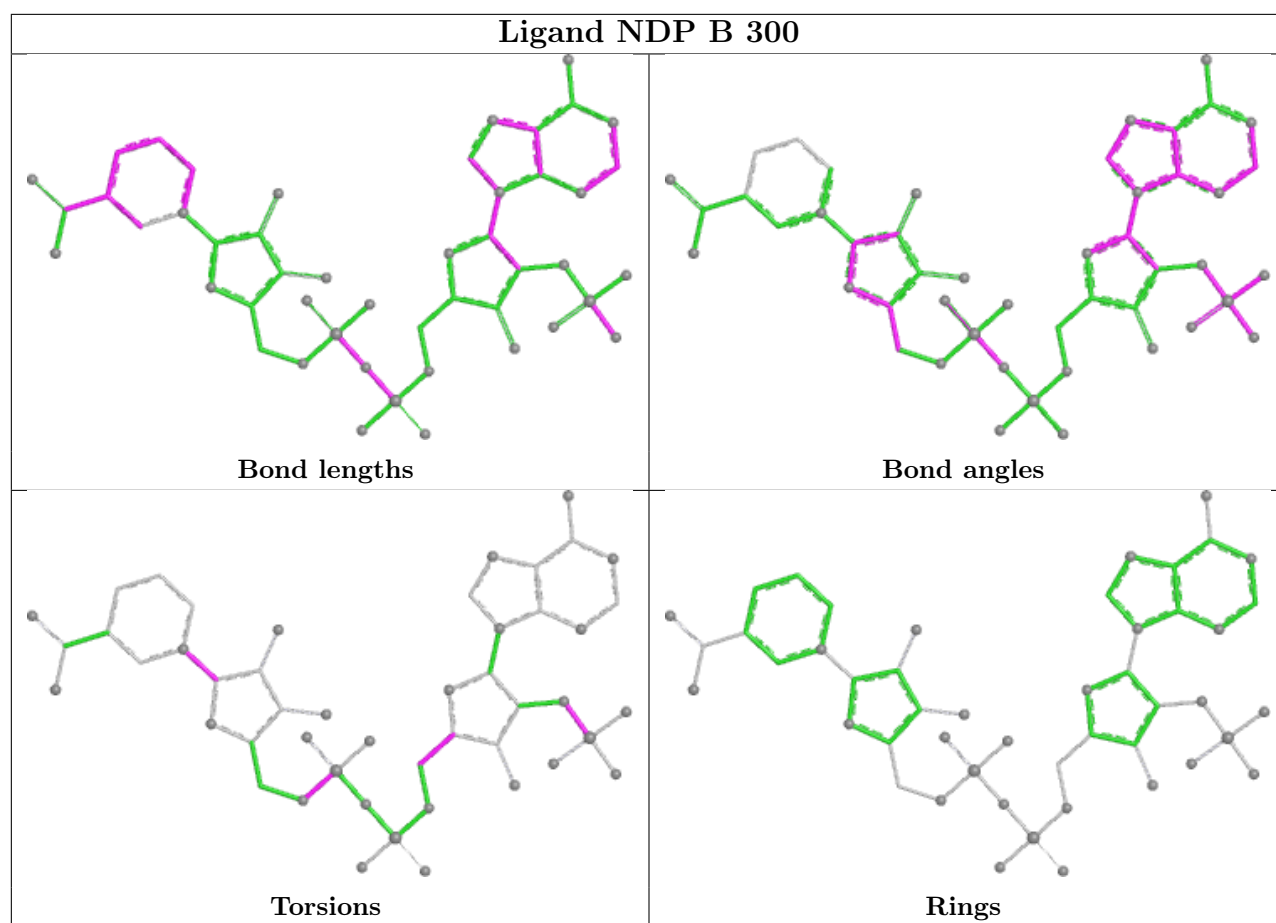
There are no ring outliers.

3 monomers are involved in 5 short contacts:

Mol	Chain	Res	Type	Clashes	Symm-Clashes
2	A	300	NDP	3	0
2	B	300	NDP	2	0
3	A	301	EDO	2	0

The following is a two-dimensional graphical depiction of Mogul quality analysis of bond lengths, bond angles, torsion angles, and ring geometry for all instances of the Ligand of Interest. In addition, ligands with molecular weight > 250 and outliers as shown on the validation Tables will also be included. For torsion angles, if less than 5% of the Mogul distribution of torsion angles is within 10 degrees of the torsion angle in question, then that torsion angle is considered an outlier. Any bond that is central to one or more torsion angles identified as an outlier by Mogul will be highlighted in the graph. For rings, the root-mean-square deviation (RMSD) between the ring in question and similar rings identified by Mogul is calculated over all ring torsion angles. If the average RMSD is greater than 60 degrees and the minimal RMSD between the ring in question and any Mogul-identified rings is also greater than 60 degrees, then that ring is considered an outlier. The outliers are highlighted in purple. The color gray indicates Mogul did not find sufficient equivalents in the CSD to analyse the geometry.





5.7 Other polymers [i](#)

There are no such residues in this entry.

5.8 Polymer linkage issues [i](#)

There are no chain breaks in this entry.

6 Fit of model and data

6.1 Protein, DNA and RNA chains

In the following table, the column labelled ‘#RSRZ> 2’ contains the number (and percentage) of RSRZ outliers, followed by percent RSRZ outliers for the chain as percentile scores relative to all X-ray entries and entries of similar resolution. The OWAB column contains the minimum, median, 95th percentile and maximum values of the occupancy-weighted average B-factor per residue. The column labelled ‘Q< 0.9’ lists the number of (and percentage) of residues with an average occupancy less than 0.9.

Mol	Chain	Analysed	<RSRZ>	#RSRZ>2	OWAB(Å ²)	Q<0.9
1	A	269/279 (96%)	0.21	9 (3%) 49 59	19, 31, 51, 59	0
1	B	252/279 (90%)	0.39	16 (6%) 26 34	21, 34, 55, 68	0
All	All	521/558 (93%)	0.30	25 (4%) 35 45	19, 32, 54, 68	0

All (25) RSRZ outliers are listed below:

Mol	Chain	Res	Type	RSRZ
1	B	149	CYS	5.0
1	B	5	ARG	2.8
1	B	140	GLN	2.8
1	A	103	ASN	2.7
1	A	220	GLU	2.7
1	B	147	LEU	2.7
1	A	46	GLN	2.6
1	A	7	ARG	2.5
1	B	83	GLU	2.5
1	B	141	GLU	2.5
1	B	252	TRP	2.5
1	B	236	LYS	2.5
1	B	4	LEU	2.4
1	A	145	SER	2.4
1	A	30	SER	2.4
1	A	219	LEU	2.3
1	B	150	SER	2.3
1	B	60	ASN	2.2
1	A	35	TRP	2.1
1	B	87	GLY	2.1
1	B	88	SER	2.1
1	B	92	LEU	2.1
1	B	172	TYR	2.0
1	B	146	GLY	2.0

Continued on next page...

Continued from previous page...

Mol	Chain	Res	Type	RSRZ
1	A	44	LYS	2.0

6.2 Non-standard residues in protein, DNA, RNA chains [i](#)

There are no non-standard protein/DNA/RNA residues in this entry.

6.3 Carbohydrates [i](#)

There are no oligosaccharides in this entry.

6.4 Ligands [i](#)

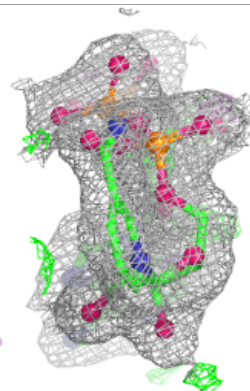
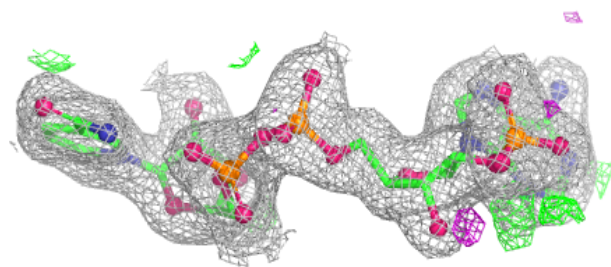
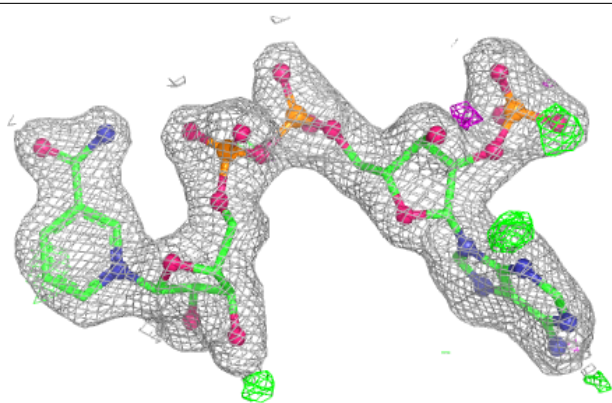
In the following table, the Atoms column lists the number of modelled atoms in the group and the number defined in the chemical component dictionary. The B-factors column lists the minimum, median, 95th percentile and maximum values of B factors of atoms in the group. The column labelled 'Q< 0.9' lists the number of atoms with occupancy less than 0.9.

Mol	Type	Chain	Res	Atoms	RSCC	RSR	B-factors(Å ²)	Q<0.9
3	EDO	A	301	4/4	0.86	0.19	27,32,42,48	0
2	NDP	B	300	48/48	0.97	0.06	23,29,33,35	0
2	NDP	A	300	48/48	0.98	0.05	20,26,29,33	0

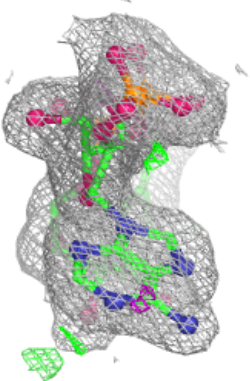
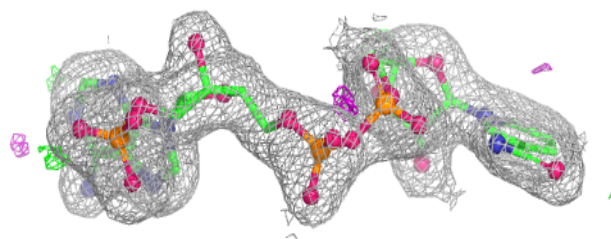
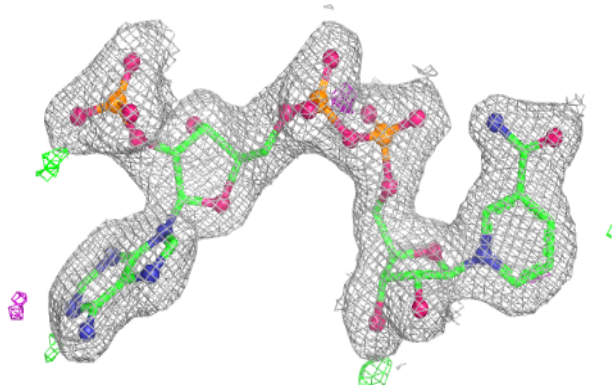
The following is a graphical depiction of the model fit to experimental electron density of all instances of the Ligand of Interest. In addition, ligands with molecular weight > 250 and outliers as shown on the geometry validation Tables will also be included. Each fit is shown from different orientation to approximate a three-dimensional view.

Electron density around NDP B 300:

$2mF_o-DF_c$ (at 0.7 rmsd) in gray
 mF_o-DF_c (at 3 rmsd) in purple (negative)
and green (positive)

**Electron density around NDP A 300:**

$2mF_o-DF_c$ (at 0.7 rmsd) in gray
 mF_o-DF_c (at 3 rmsd) in purple (negative)
and green (positive)



6.5 Other polymers [i](#)

There are no such residues in this entry.