



# Full wwPDB X-ray Structure Validation Report ⓘ

Mar 8, 2026 – 09:46 AM UTC

PDB ID : 4KRI / pdb\_00004kri  
Title : Haemonchus contortus Phosphoethanolamine N-methyltransferase 2 in complex with phosphomonomethylethanolamine and S-adenosylhomocysteine  
Authors : Lee, S.G.; Jez, J.M.  
Deposited on : 2013-05-16  
Resolution : 1.72 Å(reported)

This is a Full wwPDB X-ray Structure Validation Report for a publicly released PDB entry.

We welcome your comments at [validation@mail.wwpdb.org](mailto:validation@mail.wwpdb.org)

A user guide is available at

<https://www.wwpdb.org/validation/2017/XrayValidationReportHelp>

with specific help available everywhere you see the ⓘ symbol.

The types of validation reports are described at

<http://www.wwpdb.org/validation/2017/FAQs#types>.

---

The following versions of software and data (see [references ⓘ](#)) were used in the production of this report:

MolProbity	:	4-5-2 with Phenix2.0
Mogul	:	2022.3.0, CSD as543be (2022)
Xtriage (Phenix)	:	2.0
EDS	:	3.0
Buster-report	:	wwPDB partial adaption of 1.1.7 (2018)
Percentile statistics	:	20250101.v01 (using entries in the PDB archive January 1st 2025)
CCP4	:	9.0.010 (Gargrove)
Density-Fitness	:	1.0.12
Ideal geometry (proteins)	:	Engh & Huber (2001)
Ideal geometry (DNA, RNA)	:	Parkinson et al. (1996)
Validation Pipeline (wwPDB-VP)	:	2.49

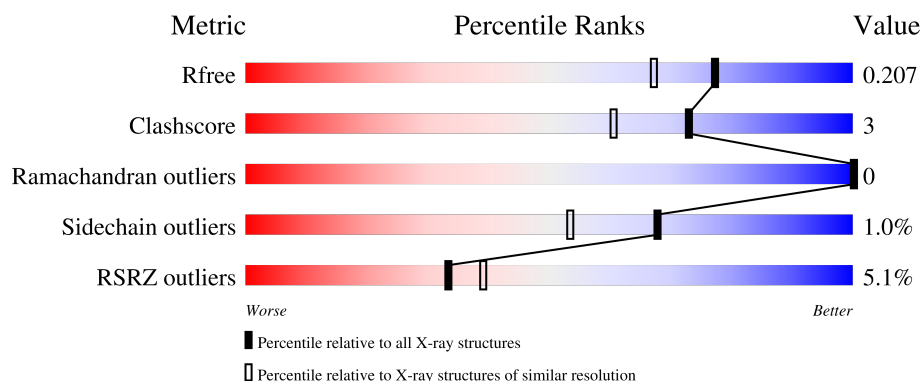
# 1 Overall quality at a glance

The following experimental techniques were used to determine the structure:

## *X-RAY DIFFRACTION*

The reported resolution of this entry is 1.72 Å.

Percentile scores (ranging between 0-100) for global validation metrics of the entry are shown in the following graphic. The table shows the number of entries on which the scores are based.



Metric	Whole archive (#Entries)	Similar resolution (#Entries, resolution range(Å))
$R_{free}$	180053	1039 (1.72-1.72)
Clashscore	190562	1049 (1.72-1.72)
Ramachandran outliers	187476	1041 (1.72-1.72)
Sidechain outliers	187428	1041 (1.72-1.72)
RSRZ outliers	180081	1039 (1.72-1.72)

The table below summarises the geometric issues observed across the polymeric chains and their fit to the electron density. The red, orange, yellow and green segments of the lower bar indicate the fraction of residues that contain outliers for  $\geq 3$ , 2, 1 and 0 types of geometric quality criteria respectively. A grey segment represents the fraction of residues that are not modelled. The numeric value for each fraction is indicated below the corresponding segment, with a dot representing fractions  $\leq 5\%$ . The upper red bar (where present) indicates the fraction of residues that have poor fit to the electron density. The numeric value is given above the bar.

Mol	Chain	Length	Quality of chain
1	A	433	<div> <div>4%</div> <div>92%</div> <div>7%</div> </div>
1	B	433	<div> <div>5%</div> <div>89%</div> <div>8%</div> </div>
1	C	433	<div> <div>6%</div> <div>91%</div> <div>8%</div> </div>

## 2 Entry composition [i](#)

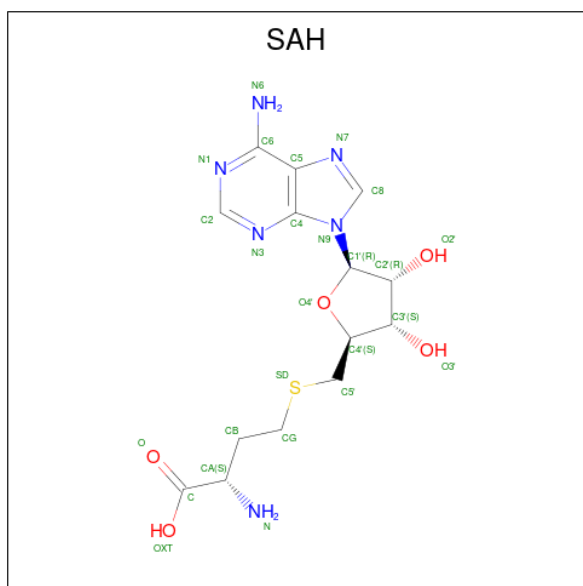
There are 4 unique types of molecules in this entry. The entry contains 11497 atoms, of which 0 are hydrogens and 0 are deuteriums.

In the tables below, the ZeroOcc column contains the number of atoms modelled with zero occupancy, the AltConf column contains the number of residues with at least one atom in alternate conformation and the Trace column contains the number of residues modelled with at most 2 atoms.

- Molecule 1 is a protein called Phospholethanolamine N-methyltransferase 2.

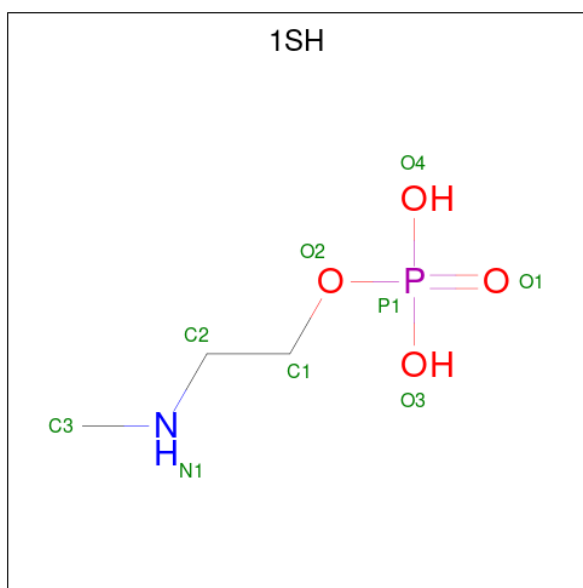
Mol	Chain	Residues	Atoms					ZeroOcc	AltConf	Trace
1	A	429	Total	C	N	O	S	0	0	0
			3462	2209	586	651	16			
1	B	425	Total	C	N	O	S	0	0	0
			3434	2192	581	646	15			
1	C	427	Total	C	N	O	S	0	0	0
			3446	2198	583	649	16			

- Molecule 2 is S-ADENOSYL-L-HOMOCYSTEINE (CCD ID: SAH) (formula:  $C_{14}H_{20}N_6O_5S$ ).



Mol	Chain	Residues	Atoms					ZeroOcc	AltConf
2	A	1	Total	C	N	O	S	0	0
			26	14	6	5	1		
2	B	1	Total	C	N	O	S	0	0
			26	14	6	5	1		
2	C	1	Total	C	N	O	S	0	0
			26	14	6	5	1		

- Molecule 3 is 2-(methylamino)ethyl dihydrogen phosphate (CCD ID: 1SH) (formula:  $C_3H_{10}NO_4P$ ).



Mol	Chain	Residues	Atoms					ZeroOcc	AltConf
3	A	1	Total	C	N	O	P	0	1
			27	9	3	12	3		
3	B	1	Total	C	N	O	P	0	1
			27	9	3	12	3		
3	C	1	Total	C	N	O	P	0	1
			18	6	2	8	2		

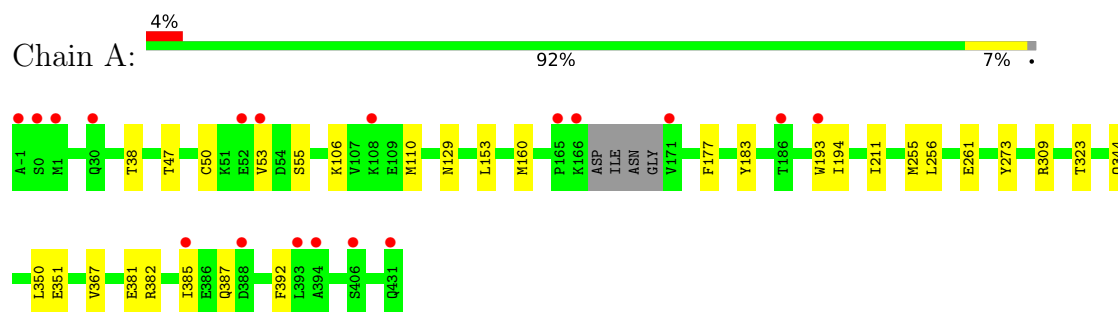
- Molecule 4 is water.

Mol	Chain	Residues	Atoms		ZeroOcc	AltConf
4	A	391	Total	O	0	0
			391	391		
4	B	301	Total	O	0	0
			301	301		
4	C	313	Total	O	0	0
			313	313		

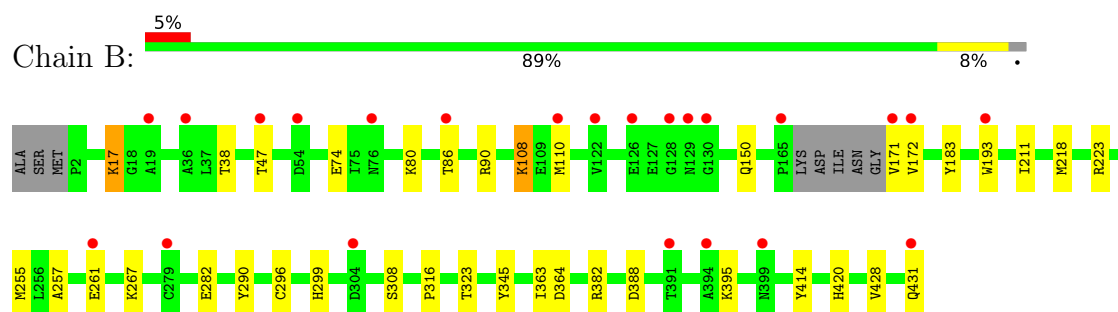
### 3 Residue-property plots [i](#)

These plots are drawn for all protein, RNA, DNA and oligosaccharide chains in the entry. The first graphic for a chain summarises the proportions of the various outlier classes displayed in the second graphic. The second graphic shows the sequence view annotated by issues in geometry and electron density. Residues are color-coded according to the number of geometric quality criteria for which they contain at least one outlier: green = 0, yellow = 1, orange = 2 and red = 3 or more. A red dot above a residue indicates a poor fit to the electron density ( $RSRZ > 2$ ). Stretches of 2 or more consecutive residues without any outlier are shown as a green connector. Residues present in the sample, but not in the model, are shown in grey.

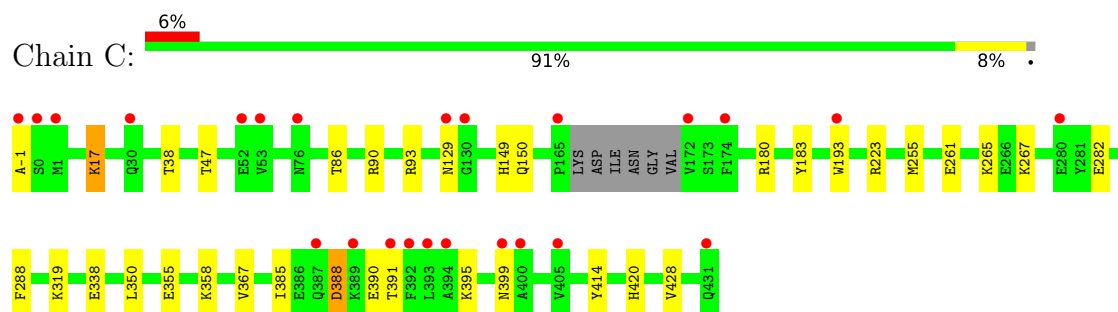
#### • Molecule 1: Phosphoethanolamine N-methyltransferase 2



#### • Molecule 1: Phosphoethanolamine N-methyltransferase 2



#### • Molecule 1: Phosphoethanolamine N-methyltransferase 2



## 4 Data and refinement statistics

Property	Value	Source
Space group	C 1 2 1	Depositor
Cell constants a, b, c, $\alpha$ , $\beta$ , $\gamma$	135.99Å 136.84Å 90.87Å 90.00° 118.39° 90.00°	Depositor
Resolution (Å)	34.20 – 1.72 34.20 – 1.72	Depositor EDS
% Data completeness (in resolution range)	97.5 (34.20-1.72) 92.8 (34.20-1.72)	Depositor EDS
$R_{merge}$	(Not available)	Depositor
$R_{sym}$	(Not available)	Depositor
$\langle I/\sigma(I) \rangle$ <sup>1</sup>	2.06 (at 1.72Å)	Xtriage
Refinement program	PHENIX (phenix.refine: 1.7.3_928)	Depositor
R, $R_{free}$	0.174 , 0.210 0.172 , 0.207	Depositor DCC
$R_{free}$ test set	7563 reflections (4.91%)	wwPDB-VP
Wilson B-factor (Å <sup>2</sup> )	24.5	Xtriage
Anisotropy	0.424	Xtriage
Bulk solvent $k_{sol}$ (e/Å <sup>3</sup> ), $B_{sol}$ (Å <sup>2</sup> )	0.33 , 46.0	EDS
L-test for twinning <sup>2</sup>	$\langle  L  \rangle = 0.49$ , $\langle L^2 \rangle = 0.32$	Xtriage
Estimated twinning fraction	No twinning to report.	Xtriage
$F_o, F_c$ correlation	0.97	EDS
Total number of atoms	11497	wwPDB-VP
Average B, all atoms (Å <sup>2</sup> )	37.0	wwPDB-VP

Xtriage's analysis on translational NCS is as follows: *The largest off-origin peak in the Patterson function is 3.71% of the height of the origin peak. No significant pseudotranslation is detected.*

<sup>1</sup>Intensities estimated from amplitudes.

<sup>2</sup>Theoretical values of  $\langle |L| \rangle$ ,  $\langle L^2 \rangle$  for acentric reflections are 0.5, 0.333 respectively for untwinned datasets, and 0.375, 0.2 for perfectly twinned datasets.

## 5 Model quality [i](#)

### 5.1 Standard geometry [i](#)

Bond lengths and bond angles in the following residue types are not validated in this section: 1SH, SAH

The Z score for a bond length (or angle) is the number of standard deviations the observed value is removed from the expected value. A bond length (or angle) with  $|Z| > 5$  is considered an outlier worth inspection. RMSZ is the root-mean-square of all Z scores of the bond lengths (or angles).

Mol	Chain	Bond lengths		Bond angles	
		RMSZ	# Z  >5	RMSZ	# Z  >5
1	A	0.42	0/3533	0.73	0/4761
1	B	0.39	0/3505	0.73	1/4724 (0.0%)
1	C	0.39	0/3517	0.73	1/4740 (0.0%)
All	All	0.40	0/10555	0.73	2/14225 (0.0%)

There are no bond length outliers.

All (2) bond angle outliers are listed below:

Mol	Chain	Res	Type	Atoms	Z	Observed(°)	Ideal(°)
1	B	17	LYS	CB-CA-C	-6.00	109.67	116.63
1	C	17	LYS	CB-CA-C	-5.13	110.64	116.54

There are no chirality outliers.

There are no planarity outliers.

### 5.2 Too-close contacts [i](#)

In the following table, the Non-H and H(model) columns list the number of non-hydrogen atoms and hydrogen atoms in the chain respectively. The H(added) column lists the number of hydrogen atoms added and optimized by MolProbity. The Clashes column lists the number of clashes within the asymmetric unit, whereas Symm-Clashes lists symmetry-related clashes.

Mol	Chain	Non-H	H(model)	H(added)	Clashes	Symm-Clashes
1	A	3462	0	3412	21	0
1	B	3434	0	3380	28	0
1	C	3446	0	3390	20	0
2	A	26	0	19	0	0
2	B	26	0	19	0	0
2	C	26	0	19	0	0

*Continued on next page...*

*Continued from previous page...*

Mol	Chain	Non-H	H(model)	H(added)	Clashes	Symm-Clashes
3	A	27	0	30	0	0
3	B	27	0	30	3	0
3	C	18	0	20	0	0
4	A	391	0	0	2	0
4	B	301	0	0	4	0
4	C	313	0	0	3	0
All	All	11497	0	10319	66	0

The all-atom clashscore is defined as the number of clashes found per 1000 atoms (including hydrogen atoms). The all-atom clashscore for this structure is 3.

All (66) close contacts within the same asymmetric unit are listed below, sorted by their clash magnitude.

Atom-1	Atom-2	Interatomic distance (Å)	Clash overlap (Å)
1:B:299:HIS:HD2	4:B:874:HOH:O	1.44	0.98
1:A:194:ILE:HD13	1:A:385:ILE:HG23	1.53	0.88
1:B:183:TYR:HH	1:B:299:HIS:HE1	1.21	0.85
1:B:110:MET:HE2	1:B:261:GLU:HG2	1.59	0.83
1:B:183:TYR:HH	1:B:299:HIS:CE1	1.98	0.82
1:C:355:GLU:OE2	1:C:358:LYS:NZ	2.26	0.68
1:C:399:ASN:ND2	4:C:1030:HOH:O	2.28	0.67
1:C:17:LYS:NZ	1:C:282:GLU:OE1	2.30	0.65
1:C:38:THR:HG23	1:C:47:THR:HG21	1.78	0.64
1:B:382:ARG:HG2	1:B:382:ARG:HH11	1.61	0.64
1:C:93:ARG:NH1	4:C:946:HOH:O	2.32	0.63
1:B:363:ILE:HG13	1:B:428:VAL:HG23	1.83	0.61
1:B:38:THR:HG23	1:B:47:THR:HG21	1.84	0.60
1:A:309:ARG:NH1	4:A:1103:HOH:O	2.34	0.60
1:B:193:TRP:HH2	1:B:388:ASP:HB2	1.66	0.60
1:B:211:ILE:HD13	1:B:323:THR:HG21	1.84	0.59
1:A:211:ILE:HD13	1:A:323:THR:HG21	1.84	0.59
1:B:364:ASP:HB2	1:B:428:VAL:HG22	1.85	0.58
1:A:193:TRP:HZ3	1:A:385:ILE:HG22	1.69	0.57
1:B:257:ALA:O	1:B:261:GLU:HG3	2.05	0.56
1:A:193:TRP:CZ3	1:A:385:ILE:HG22	2.42	0.55
1:C:223:ARG:HG2	1:C:288:PHE:CD1	2.44	0.53
1:C:388:ASP:N	1:C:388:ASP:OD1	2.42	0.53
1:B:414:TYR:HB3	1:B:420:HIS:HB2	1.92	0.52
1:B:382:ARG:NE	4:B:1079:HOH:O	2.43	0.51
1:A:387:GLN:OE1	1:C:129:ASN:HA	2.12	0.49
1:A:177:PHE:CZ	1:A:344:GLN:HG3	2.48	0.48

*Continued on next page...*



*Continued from previous page...*

Atom-1	Atom-2	Interatomic distance (Å)	Clash overlap (Å)
1:A:256:LEU:HD21	1:A:273:TYR:HB3	1.95	0.48
1:A:110:MET:HE2	1:A:261:GLU:HA	1.98	0.46
1:A:38:THR:HG23	1:A:47:THR:HG21	1.98	0.46
1:A:183:TYR:CD1	1:A:255:MET:HE2	2.51	0.46
1:C:193:TRP:CZ3	1:C:385:ILE:HG13	2.50	0.46
1:B:345:TYR:HH	3:B:702[B]:1SH:H1	1.63	0.45
1:B:108:LYS:NZ	1:C:395:LYS:O	2.40	0.45
1:B:17:LYS:HE3	1:B:282:GLU:CD	2.41	0.45
1:B:218:MET:HG2	1:B:290:TYR:CZ	2.51	0.45
1:C:414:TYR:HB3	1:C:420:HIS:HB2	1.99	0.44
1:C:183:TYR:CD1	1:C:255:MET:HE2	2.51	0.44
1:A:160:MET:HE2	1:A:160:MET:HB2	1.84	0.44
1:C:-1:ALA:HB3	1:C:149:HIS:CE1	2.53	0.44
1:B:183:TYR:CD1	1:B:255:MET:HE2	2.53	0.44
1:B:223:ARG:NE	4:B:1039:HOH:O	2.51	0.43
1:A:351:GLU:OE1	4:A:928:HOH:O	2.21	0.43
1:A:194:ILE:HD11	1:A:381:GLU:HB3	2.00	0.43
1:A:309:ARG:HH11	1:A:309:ARG:HG2	1.83	0.43
1:B:382:ARG:NH1	4:B:1037:HOH:O	2.52	0.43
1:B:150:GLN:HB3	1:B:267:LYS:HD3	2.01	0.43
1:C:350:LEU:HD22	1:C:367:VAL:HB	2.00	0.42
1:A:350:LEU:HD22	1:A:367:VAL:HB	2.01	0.42
1:C:150:GLN:HB3	1:C:267:LYS:HD3	2.02	0.42
1:B:345:TYR:HH	3:B:702[A]:1SH:H1	1.65	0.42
1:A:110:MET:HE1	1:A:153:LEU:HD11	2.02	0.42
1:B:86:THR:O	1:B:90:ARG:HG3	2.19	0.42
1:B:363:ILE:HG13	1:B:428:VAL:CG2	2.48	0.42
1:C:390:GLU:HG3	1:C:391:THR:H	1.86	0.41
1:B:316:PRO:HB3	1:B:431:GLN:HB2	2.02	0.41
1:A:50:CYS:HB2	1:A:55:SER:HB2	2.01	0.41
1:C:319:LYS:NZ	4:C:1089:HOH:O	2.44	0.41
1:B:74:GLU:HG3	1:B:80:LYS:HB3	2.03	0.41
1:B:74:GLU:OE1	1:B:74:GLU:N	2.54	0.41
1:C:261:GLU:OE2	1:C:265:LYS:NZ	2.45	0.41
1:B:345:TYR:HH	3:B:702[C]:1SH:H1	1.68	0.40
1:A:106:LYS:HE3	1:C:338:GLU:OE1	2.21	0.40
1:A:193:TRP:CD2	1:A:392:PHE:HD1	2.39	0.40
1:C:86:THR:O	1:C:90:ARG:HG3	2.21	0.40
1:A:382:ARG:HA	1:A:385:ILE:HG12	2.03	0.40

There are no symmetry-related clashes.

## 5.3 Torsion angles

### 5.3.1 Protein backbone

In the following table, the Percentiles column shows the percent Ramachandran outliers of the chain as a percentile score with respect to all X-ray entries followed by that with respect to entries of similar resolution.

The Analysed column shows the number of residues for which the backbone conformation was analysed, and the total number of residues.

Mol	Chain	Analysed	Favoured	Allowed	Outliers	Percentiles	
1	A	425/433 (98%)	417 (98%)	8 (2%)	0	100	100
1	B	421/433 (97%)	414 (98%)	7 (2%)	0	100	100
1	C	423/433 (98%)	417 (99%)	6 (1%)	0	100	100
All	All	1269/1299 (98%)	1248 (98%)	21 (2%)	0	100	100

There are no Ramachandran outliers to report.

### 5.3.2 Protein sidechains

In the following table, the Percentiles column shows the percent sidechain outliers of the chain as a percentile score with respect to all X-ray entries followed by that with respect to entries of similar resolution.

The Analysed column shows the number of residues for which the sidechain conformation was analysed, and the total number of residues.

Mol	Chain	Analysed	Rotameric	Outliers	Percentiles	
1	A	373/376 (99%)	371 (100%)	2 (0%)	81	71
1	B	370/376 (98%)	364 (98%)	6 (2%)	55	34
1	C	371/376 (99%)	368 (99%)	3 (1%)	73	61
All	All	1114/1128 (99%)	1103 (99%)	11 (1%)	68	53

All (11) residues with a non-rotameric sidechain are listed below:

Mol	Chain	Res	Type
1	A	53	VAL
1	A	129	ASN
1	B	108	LYS
1	B	171	VAL
1	B	172	VAL

*Continued on next page...*

*Continued from previous page...*

Mol	Chain	Res	Type
1	B	296	CYS
1	B	308	SER
1	B	395	LYS
1	C	180	ARG
1	C	388	ASP
1	C	428	VAL

Sometimes sidechains can be flipped to improve hydrogen bonding and reduce clashes. All (7) such sidechains are listed below:

Mol	Chain	Res	Type
1	A	135	GLN
1	B	149	HIS
1	B	182	GLN
1	B	299	HIS
1	B	420	HIS
1	C	131	ASN
1	C	140	ASN

### 5.3.3 RNA [i](#)

There are no RNA molecules in this entry.

## 5.4 Non-standard residues in protein, DNA, RNA chains [i](#)

There are no non-standard protein/DNA/RNA residues in this entry.

## 5.5 Carbohydrates [i](#)

There are no oligosaccharides in this entry.

## 5.6 Ligand geometry [i](#)

11 ligands are modelled in this entry.

In the following table, the Counts columns list the number of bonds (or angles) for which Mogul statistics could be retrieved, the number of bonds (or angles) that are observed in the model and the number of bonds (or angles) that are defined in the Chemical Component Dictionary. The Link column lists molecule types, if any, to which the group is linked. The Z score for a bond length (or angle) is the number of standard deviations the observed value is removed from the

expected value. A bond length (or angle) with  $|Z| > 2$  is considered an outlier worth inspection. RMSZ is the root-mean-square of all Z scores of the bond lengths (or angles).

Mol	Type	Chain	Res	Link	Bond lengths			Bond angles		
					Counts	RMSZ	$\# Z  > 2$	Counts	RMSZ	$\# Z  > 2$
3	1SH	A	702[B]	-	8,8,8	1.25	1 (12%)	8,10,10	0.79	0
2	SAH	C	701	-	27,28,28	1.33	5 (18%)	36,40,40	2.22	12 (33%)
3	1SH	B	702[A]	-	8,8,8	1.37	1 (12%)	8,10,10	0.77	0
3	1SH	A	702[C]	-	8,8,8	1.24	1 (12%)	8,10,10	0.78	0
3	1SH	C	702[A]	-	8,8,8	1.61	2 (25%)	8,10,10	0.70	0
2	SAH	B	701	-	27,28,28	1.36	5 (18%)	36,40,40	2.30	10 (27%)
3	1SH	B	702[B]	-	8,8,8	1.42	1 (12%)	8,10,10	0.84	0
3	1SH	A	702[A]	-	8,8,8	1.23	1 (12%)	8,10,10	0.63	0
3	1SH	B	702[C]	-	8,8,8	1.39	1 (12%)	8,10,10	0.85	0
2	SAH	A	701	-	27,28,28	1.33	5 (18%)	36,40,40	2.14	11 (30%)
3	1SH	C	702[B]	-	8,8,8	1.62	2 (25%)	8,10,10	0.66	0

In the following table, the Chirals column lists the number of chiral outliers, the number of chiral centers analysed, the number of these observed in the model and the number defined in the Chemical Component Dictionary. Similar counts are reported in the Torsion and Rings columns. '-' means no outliers of that kind were identified.

Mol	Type	Chain	Res	Link	Chirals	Torsions	Rings
3	1SH	A	702[B]	-	-	0/6/6/6	-
2	SAH	C	701	-	-	1/15/31/31	0/3/3/3
3	1SH	B	702[A]	-	-	0/6/6/6	-
3	1SH	A	702[C]	-	-	0/6/6/6	-
3	1SH	C	702[A]	-	-	0/6/6/6	-
2	SAH	B	701	-	-	0/15/31/31	0/3/3/3
3	1SH	B	702[B]	-	-	0/6/6/6	-
3	1SH	A	702[A]	-	-	0/6/6/6	-
3	1SH	B	702[C]	-	-	0/6/6/6	-
2	SAH	A	701	-	-	0/15/31/31	0/3/3/3
3	1SH	C	702[B]	-	-	0/6/6/6	-

All (25) bond length outliers are listed below:

Mol	Chain	Res	Type	Atoms	Z	Observed(Å)	Ideal(Å)
3	A	702[B]	1SH	O2-C1	-2.79	1.33	1.44
3	B	702[B]	1SH	O2-C1	-2.78	1.33	1.44
3	B	702[A]	1SH	O2-C1	-2.77	1.33	1.44
3	C	702[A]	1SH	O2-C1	-2.76	1.33	1.44

*Continued on next page...*

*Continued from previous page...*

Mol	Chain	Res	Type	Atoms	Z	Observed(Å)	Ideal(Å)
3	C	702[B]	1SH	O2-C1	-2.74	1.33	1.44
3	B	702[C]	1SH	O2-C1	-2.74	1.33	1.44
3	A	702[A]	1SH	O2-C1	-2.73	1.33	1.44
3	A	702[C]	1SH	O2-C1	-2.68	1.34	1.44
2	B	701	SAH	OXT-C	-2.67	1.22	1.30
2	A	701	SAH	OXT-C	-2.56	1.22	1.30
3	C	702[A]	1SH	P1-O1	2.55	1.58	1.50
3	C	702[B]	1SH	P1-O1	2.54	1.58	1.50
2	A	701	SAH	C5'-C4'	-2.53	1.42	1.52
2	C	701	SAH	C2'-C3'	-2.49	1.46	1.53
2	A	701	SAH	C2'-C3'	-2.43	1.46	1.53
2	C	701	SAH	OXT-C	-2.43	1.22	1.30
2	B	701	SAH	C2'-C3'	-2.40	1.46	1.53
2	C	701	SAH	C5'-C4'	-2.40	1.43	1.52
2	C	701	SAH	CB-CA	2.40	1.58	1.53
2	A	701	SAH	CB-CA	2.40	1.58	1.53
2	B	701	SAH	C5'-C4'	-2.33	1.43	1.52
2	B	701	SAH	C5-N7	-2.32	1.34	1.39
2	B	701	SAH	CB-CA	2.27	1.58	1.53
2	C	701	SAH	C5-N7	-2.20	1.35	1.39
2	A	701	SAH	C5-N7	-2.03	1.35	1.39

All (33) bond angle outliers are listed below:

Mol	Chain	Res	Type	Atoms	Z	Observed(°)	Ideal(°)
2	B	701	SAH	C5-C4-N3	-5.75	118.80	126.72
2	A	701	SAH	C5-C4-N3	-5.19	119.57	126.72
2	C	701	SAH	N3-C2-N1	-5.06	120.92	128.58
2	B	701	SAH	N3-C4-N9	4.77	135.28	127.17
2	C	701	SAH	C5-C4-N3	-4.73	120.20	126.72
2	B	701	SAH	N3-C2-N1	-4.48	121.79	128.58
2	C	701	SAH	N9-C8-N7	-4.42	107.66	113.94
2	A	701	SAH	N3-C2-N1	-4.40	121.92	128.58
2	B	701	SAH	N9-C8-N7	-4.38	107.72	113.94
2	A	701	SAH	N3-C4-N9	4.35	134.56	127.17
2	C	701	SAH	C4-N9-C8	4.12	110.06	105.74
2	A	701	SAH	N9-C8-N7	-4.07	108.17	113.94
2	C	701	SAH	N3-C4-N9	4.02	134.01	127.17
2	B	701	SAH	C5-N7-C8	3.91	109.60	103.45
2	B	701	SAH	C4-N9-C8	3.85	109.78	105.74
2	A	701	SAH	C4-N9-C8	3.82	109.75	105.74
2	B	701	SAH	C2-N3-C4	3.56	120.53	111.83

*Continued on next page...*

*Continued from previous page...*

Mol	Chain	Res	Type	Atoms	Z	Observed(°)	Ideal(°)
2	C	701	SAH	C5-N7-C8	3.47	108.91	103.45
2	C	701	SAH	C2-N3-C4	3.37	120.06	111.83
2	A	701	SAH	C5-N7-C8	3.34	108.70	103.45
2	A	701	SAH	C2-N3-C4	3.24	119.73	111.83
2	B	701	SAH	C4-C5-N7	-3.16	106.97	110.58
2	B	701	SAH	O4'-C1'-N9	2.87	113.61	108.09
2	A	701	SAH	C4-C5-N7	-2.70	107.49	110.58
2	C	701	SAH	C4-N9-C1'	-2.64	120.45	126.63
2	C	701	SAH	C4-C5-N7	-2.63	107.58	110.58
2	B	701	SAH	C5'-C4'-C3'	-2.41	109.02	115.06
2	C	701	SAH	C4'-O4'-C1'	-2.31	104.36	109.47
2	C	701	SAH	O4'-C1'-N9	2.29	112.49	108.09
2	C	701	SAH	C5'-C4'-C3'	-2.24	109.47	115.06
2	A	701	SAH	O4'-C1'-N9	2.23	112.38	108.09
2	A	701	SAH	C4'-O4'-C1'	-2.07	104.89	109.47
2	A	701	SAH	OXT-C-O	-2.01	119.53	124.08

There are no chirality outliers.

All (1) torsion outliers are listed below:

Mol	Chain	Res	Type	Atoms
2	C	701	SAH	OXT-C-CA-CB

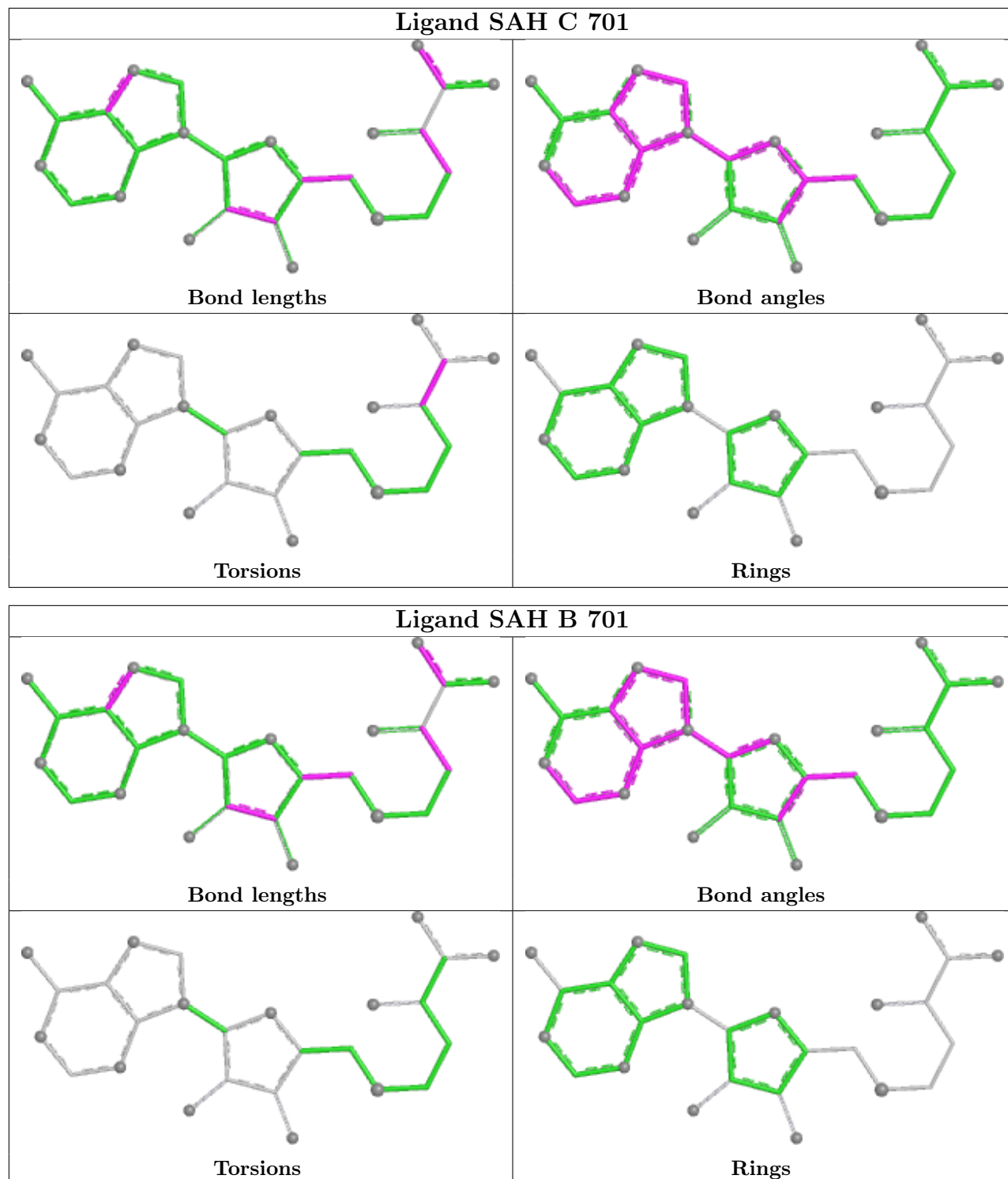
There are no ring outliers.

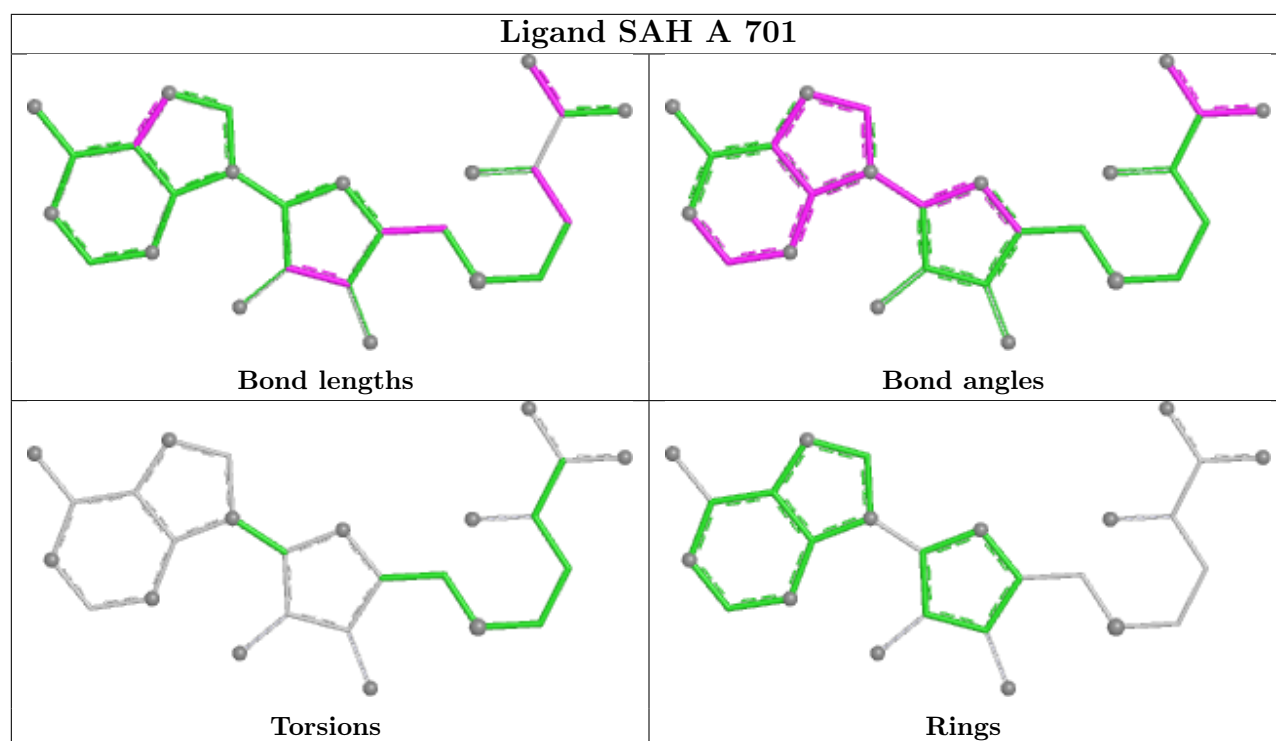
3 monomers are involved in 3 short contacts:

Mol	Chain	Res	Type	Clashes	Symm-Clashes
3	B	702[A]	1SH	1	0
3	B	702[B]	1SH	1	0
3	B	702[C]	1SH	1	0

The following is a two-dimensional graphical depiction of Mogul quality analysis of bond lengths, bond angles, torsion angles, and ring geometry for all instances of the Ligand of Interest. In addition, ligands with molecular weight > 250 and outliers as shown on the validation Tables will also be included. For torsion angles, if less than 5% of the Mogul distribution of torsion angles is within 10 degrees of the torsion angle in question, then that torsion angle is considered an outlier. Any bond that is central to one or more torsion angles identified as an outlier by Mogul will be highlighted in the graph. For rings, the root-mean-square deviation (RMSD) between the ring in question and similar rings identified by Mogul is calculated over all ring torsion angles. If the average RMSD is greater than 60 degrees and the minimal RMSD between the ring in question and any Mogul-identified rings is also greater than 60 degrees, then that ring is considered an outlier. The outliers are highlighted in purple. The color gray indicates Mogul did not find sufficient

equivalents in the CSD to analyse the geometry.





## 5.7 Other polymers [i](#)

There are no such residues in this entry.

## 5.8 Polymer linkage issues [i](#)

There are no chain breaks in this entry.



## 6 Fit of model and data

### 6.1 Protein, DNA and RNA chains

In the following table, the column labelled ‘#RSRZ > 2’ contains the number (and percentage) of RSRZ outliers, followed by percent RSRZ outliers for the chain as percentile scores relative to all X-ray entries and entries of similar resolution. The OWAB column contains the minimum, median, 95<sup>th</sup> percentile and maximum values of the occupancy-weighted average B-factor per residue. The column labelled ‘Q < 0.9’ lists the number of (and percentage) of residues with an average occupancy less than 0.9.

Mol	Chain	Analysed	<RSRZ>	#RSRZ>2	OWAB(Å <sup>2</sup> )	Q<0.9
1	A	429/433 (99%)	0.19	18 (4%) 40 48	19, 30, 58, 91	0
1	B	425/433 (98%)	0.23	23 (5%) 31 37	19, 33, 68, 110	0
1	C	427/433 (98%)	0.29	24 (5%) 30 36	20, 34, 69, 99	0
All	All	1281/1299 (98%)	0.24	65 (5%) 33 39	19, 32, 66, 110	0

All (65) RSRZ outliers are listed below:

Mol	Chain	Res	Type	RSRZ
1	C	165	PRO	5.4
1	A	-1	ALA	4.7
1	C	393	LEU	4.6
1	B	130	GLY	4.3
1	C	172	VAL	4.3
1	B	172	VAL	4.2
1	B	165	PRO	3.9
1	A	394	ALA	3.8
1	B	171	VAL	3.7
1	A	385	ILE	3.6
1	C	391	THR	3.6
1	A	165	PRO	3.5
1	C	399	ASN	3.5
1	A	406	SER	3.5
1	C	1	MET	3.5
1	A	171	VAL	3.5
1	B	36	ALA	3.4
1	C	174	PHE	3.4
1	B	128	GLY	3.2
1	C	30	GLN	3.2
1	A	0	SER	3.2
1	B	394	ALA	3.2
1	A	193	TRP	3.1

*Continued on next page...*

*Continued from previous page...*

Mol	Chain	Res	Type	RSRZ
1	C	0	SER	3.1
1	C	-1	ALA	3.0
1	B	47	THR	3.0
1	A	30	GLN	2.9
1	C	394	ALA	2.9
1	B	126	GLU	2.8
1	B	54	ASP	2.8
1	B	76	ASN	2.8
1	B	129	ASN	2.8
1	B	431	GLN	2.8
1	A	52	GLU	2.8
1	B	193	TRP	2.8
1	B	110	MET	2.8
1	C	280	GLU	2.7
1	C	392	PHE	2.6
1	C	129	ASN	2.6
1	B	279	CYS	2.6
1	C	130	GLY	2.6
1	C	387	GLN	2.6
1	B	304	ASP	2.6
1	A	388	ASP	2.6
1	C	400	ALA	2.6
1	B	391	THR	2.5
1	A	1	MET	2.5
1	B	122	VAL	2.5
1	C	431	GLN	2.4
1	A	53	VAL	2.4
1	A	186	THR	2.4
1	B	86	THR	2.4
1	C	76	ASN	2.4
1	A	393	LEU	2.4
1	B	399	ASN	2.3
1	A	108	LYS	2.2
1	A	166	LYS	2.2
1	C	193	TRP	2.1
1	C	53	VAL	2.1
1	C	405	VAL	2.1
1	B	261	GLU	2.1
1	C	52	GLU	2.1
1	C	389	LYS	2.1
1	B	19	ALA	2.0
1	A	431	GLN	2.0

## 6.2 Non-standard residues in protein, DNA, RNA chains ⓘ

There are no non-standard protein/DNA/RNA residues in this entry.

## 6.3 Carbohydrates ⓘ

There are no oligosaccharides in this entry.

## 6.4 Ligands ⓘ

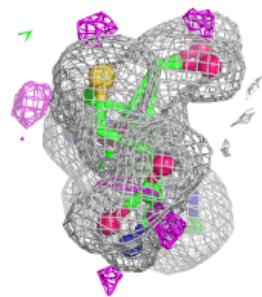
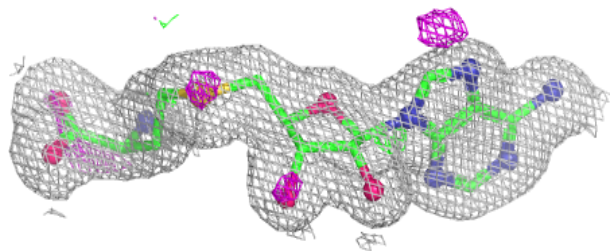
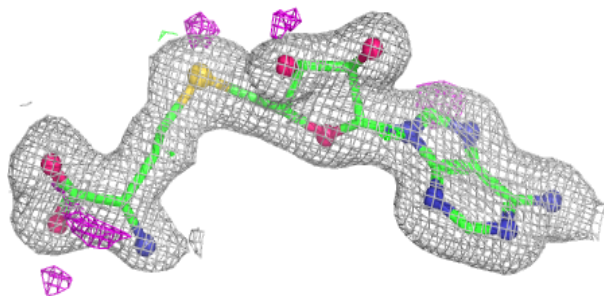
In the following table, the Atoms column lists the number of modelled atoms in the group and the number defined in the chemical component dictionary. The B-factors column lists the minimum, median, 95<sup>th</sup> percentile and maximum values of B factors of atoms in the group. The column labelled 'Q< 0.9' lists the number of atoms with occupancy less than 0.9.

Mol	Type	Chain	Res	Atoms	RSCC	RSR	B-factors( $\text{\AA}^2$ )	Q<0.9
3	1SH	A	702[A]	9/9	0.91	0.10	20,30,30,30	9
3	1SH	A	702[B]	9/9	0.91	0.10	21,30,31,31	9
3	1SH	A	702[C]	9/9	0.91	0.10	23,30,30,30	9
3	1SH	B	702[A]	9/9	0.95	0.07	19,27,28,30	9
3	1SH	B	702[B]	9/9	0.95	0.07	19,27,28,30	9
3	1SH	B	702[C]	9/9	0.95	0.07	22,27,28,29	9
2	SAH	A	701	26/26	0.96	0.07	22,28,31,34	0
2	SAH	C	701	26/26	0.96	0.07	26,32,37,39	0
3	1SH	C	702[A]	9/9	0.96	0.07	24,30,35,37	9
3	1SH	C	702[B]	9/9	0.96	0.07	23,30,35,37	9
2	SAH	B	701	26/26	0.97	0.06	26,32,36,36	0

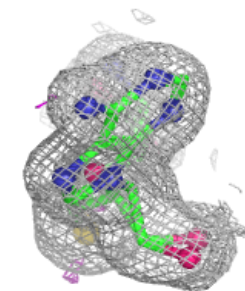
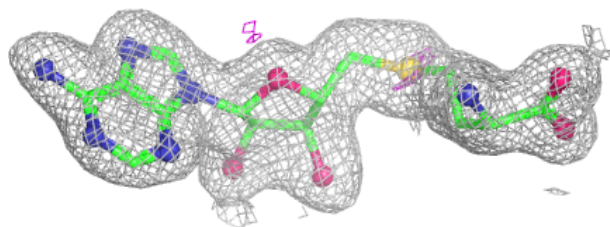
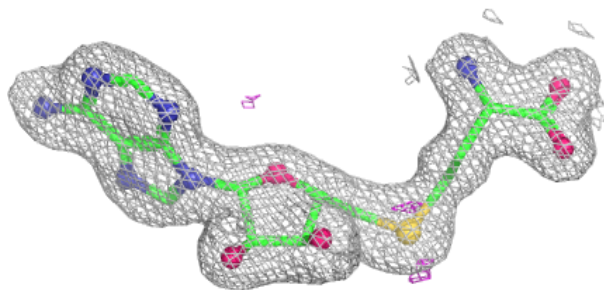
The following is a graphical depiction of the model fit to experimental electron density of all instances of the Ligand of Interest. In addition, ligands with molecular weight > 250 and outliers as shown on the geometry validation Tables will also be included. Each fit is shown from different orientation to approximate a three-dimensional view.

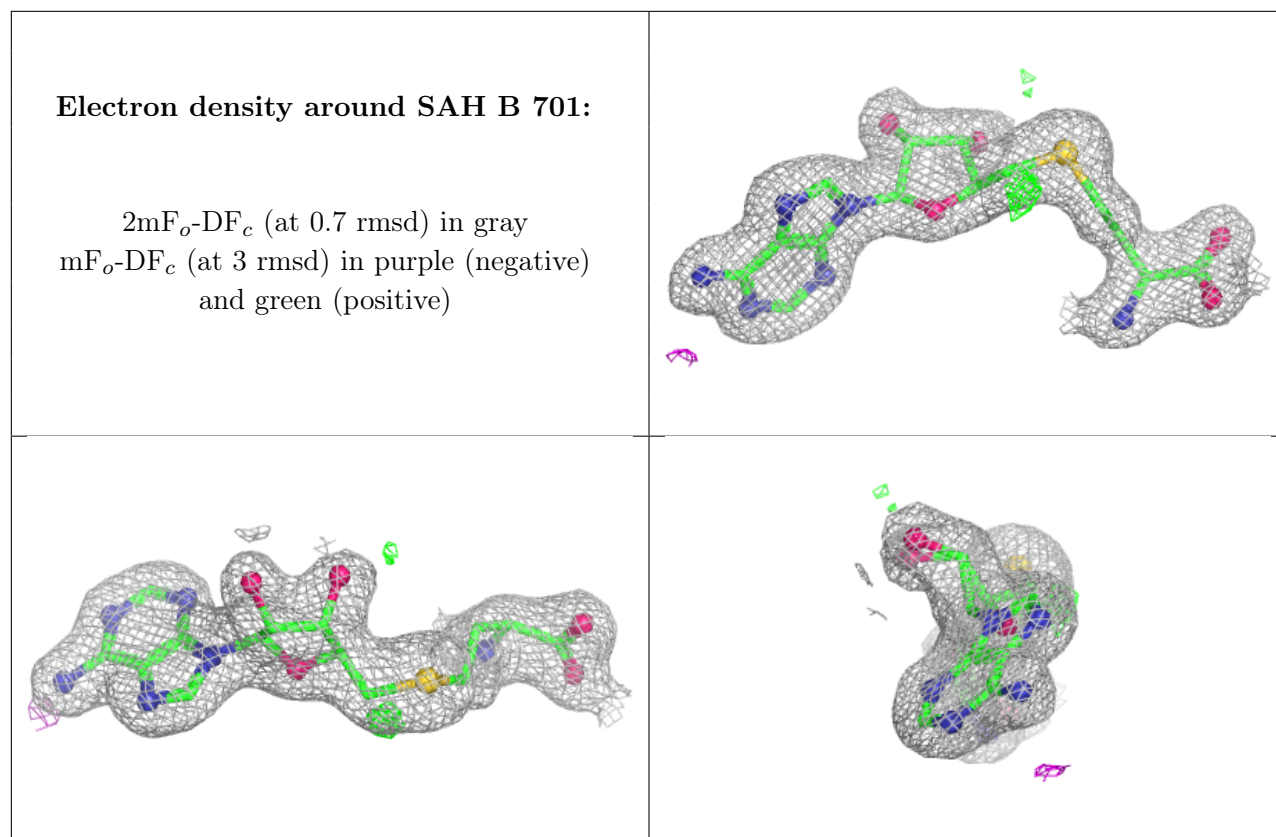
**Electron density around SAH A 701:**

$2mF_o-DF_c$  (at 0.7 rmsd) in gray  
 $mF_o-DF_c$  (at 3 rmsd) in purple (negative)  
and green (positive)

**Electron density around SAH C 701:**

$2mF_o-DF_c$  (at 0.7 rmsd) in gray  
 $mF_o-DF_c$  (at 3 rmsd) in purple (negative)  
and green (positive)





## 6.5 Other polymers [i](#)

There are no such residues in this entry.