



# Full wwPDB X-ray Structure Validation Report ⓘ

Mar 5, 2026 – 04:35 PM UTC

PDB ID : 4N8I / pdb\_00004n8i  
Title : M31G mutant, RipA structure  
Authors : Torres, R.; Goulding, C.W.  
Deposited on : 2013-10-17  
Resolution : 2.01 Å(reported)

This is a Full wwPDB X-ray Structure Validation Report for a publicly released PDB entry.

We welcome your comments at [validation@mail.wwpdb.org](mailto:validation@mail.wwpdb.org)

A user guide is available at

<https://www.wwpdb.org/validation/2017/XrayValidationReportHelp>

with specific help available everywhere you see the ⓘ symbol.

The types of validation reports are described at

<http://www.wwpdb.org/validation/2017/FAQs#types>.

---

The following versions of software and data (see [references ⓘ](#)) were used in the production of this report:

MolProbity	:	4-5-2 with Phenix2.0
Mogul	:	2022.3.0, CSD as543be (2022)
Xtriage (Phenix)	:	2.0
EDS	:	3.0
Buster-report	:	wwPDB partial adaption of 1.1.7 (2018)
Percentile statistics	:	20250101.v01 (using entries in the PDB archive January 1st 2025)
CCP4	:	9.0.010 (Gargrove)
Density-Fitness	:	1.0.12
Ideal geometry (proteins)	:	Engh & Huber (2001)
Ideal geometry (DNA, RNA)	:	Parkinson et al. (1996)
Validation Pipeline (wwPDB-VP)	:	2.49

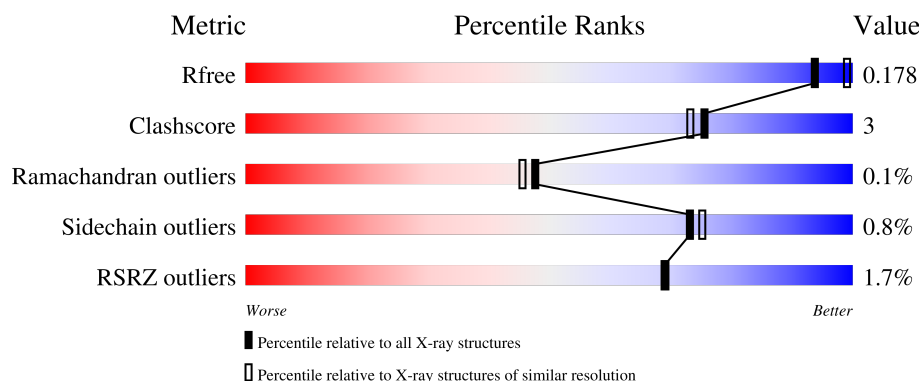
# 1 Overall quality at a glance

The following experimental techniques were used to determine the structure:

*X-RAY DIFFRACTION*

The reported resolution of this entry is 2.01 Å.

Percentile scores (ranging between 0-100) for global validation metrics of the entry are shown in the following graphic. The table shows the number of entries on which the scores are based.



Metric	Whole archive (#Entries)	Similar resolution (#Entries, resolution range(Å))
$R_{free}$	180053	13299 (2.04-2.00)
Clashscore	190562	1022 (2.02-2.02)
Ramachandran outliers	187476	1014 (2.02-2.02)
Sidechain outliers	187428	1014 (2.02-2.02)
RSRZ outliers	180081	13314 (2.04-2.00)

The table below summarises the geometric issues observed across the polymeric chains and their fit to the electron density. The red, orange, yellow and green segments of the lower bar indicate the fraction of residues that contain outliers for  $\geq 3$ , 2, 1 and 0 types of geometric quality criteria respectively. A grey segment represents the fraction of residues that are not modelled. The numeric value for each fraction is indicated below the corresponding segment, with a dot representing fractions  $\leq 5\%$ . The upper red bar (where present) indicates the fraction of residues that have poor fit to the electron density. The numeric value is given above the bar.

Mol	Chain	Length	Quality of chain
1	A	476	
1	B	476	

The following table lists non-polymeric compounds, carbohydrate monomers and non-standard residues in protein, DNA, RNA chains that are outliers for geometric or electron-density-fit criteria:

Mol	Type	Chain	Res	Chirality	Geometry	Clashes	Electron density
3	ACT	A	502	-	-	X	-
3	ACT	B	502	-	-	X	-

## 2 Entry composition

There are 4 unique types of molecules in this entry. The entry contains 14430 atoms, of which 6914 are hydrogens and 0 are deuteriums.

In the tables below, the ZeroOcc column contains the number of atoms modelled with zero occupancy, the AltConf column contains the number of residues with at least one atom in alternate conformation and the Trace column contains the number of residues modelled with at most 2 atoms.

- Molecule 1 is a protein called 4-hydroxybutyrate coenzyme A transferase.

Mol	Chain	Residues	Atoms						ZeroOcc	AltConf	Trace
1	A	440	Total	C	H	N	O	S	0	0	0
			6804	2131	3408	610	639	16			
1	B	440	Total	C	H	N	O	S	0	6	0
			6866	2151	3439	617	643	16			

There are 74 discrepancies between the modelled and reference sequences:

Chain	Residue	Modelled	Actual	Comment	Reference
A	-35	MET	-	initiating methionine	UNP Q9ZC36
A	-34	GLY	-	expression tag	UNP Q9ZC36
A	-33	SER	-	expression tag	UNP Q9ZC36
A	-32	SER	-	expression tag	UNP Q9ZC36
A	-31	HIS	-	expression tag	UNP Q9ZC36
A	-30	HIS	-	expression tag	UNP Q9ZC36
A	-29	HIS	-	expression tag	UNP Q9ZC36
A	-28	HIS	-	expression tag	UNP Q9ZC36
A	-27	HIS	-	expression tag	UNP Q9ZC36
A	-26	HIS	-	expression tag	UNP Q9ZC36
A	-25	SER	-	expression tag	UNP Q9ZC36
A	-24	SER	-	expression tag	UNP Q9ZC36
A	-23	GLY	-	expression tag	UNP Q9ZC36
A	-22	LEU	-	expression tag	UNP Q9ZC36
A	-21	VAL	-	expression tag	UNP Q9ZC36
A	-20	PRO	-	expression tag	UNP Q9ZC36
A	-19	ARG	-	expression tag	UNP Q9ZC36
A	-18	GLY	-	expression tag	UNP Q9ZC36
A	-17	SER	-	expression tag	UNP Q9ZC36
A	-16	HIS	-	expression tag	UNP Q9ZC36
A	-15	MET	-	expression tag	UNP Q9ZC36
A	-14	ALA	-	expression tag	UNP Q9ZC36
A	-13	SER	-	expression tag	UNP Q9ZC36
A	-12	MET	-	expression tag	UNP Q9ZC36
A	-11	THR	-	expression tag	UNP Q9ZC36

*Continued on next page...*

*Continued from previous page...*

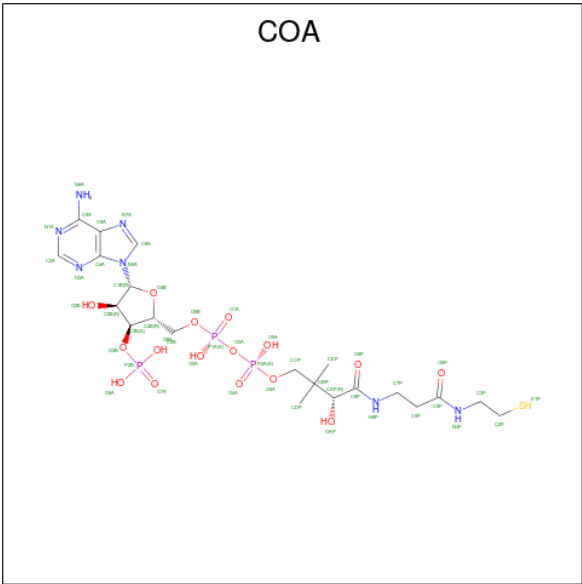
Chain	Residue	Modelled	Actual	Comment	Reference
A	-10	GLY	-	expression tag	UNP Q9ZC36
A	-9	GLY	-	expression tag	UNP Q9ZC36
A	-8	GLN	-	expression tag	UNP Q9ZC36
A	-7	GLN	-	expression tag	UNP Q9ZC36
A	-6	MET	-	expression tag	UNP Q9ZC36
A	-5	GLY	-	expression tag	UNP Q9ZC36
A	-4	ARG	-	expression tag	UNP Q9ZC36
A	-3	GLY	-	expression tag	UNP Q9ZC36
A	-2	SER	-	expression tag	UNP Q9ZC36
A	-1	GLU	-	expression tag	UNP Q9ZC36
A	0	PHE	-	expression tag	UNP Q9ZC36
A	31	GLY	MET	engineered mutation	UNP Q9ZC36
B	-35	MET	-	initiating methionine	UNP Q9ZC36
B	-34	GLY	-	expression tag	UNP Q9ZC36
B	-33	SER	-	expression tag	UNP Q9ZC36
B	-32	SER	-	expression tag	UNP Q9ZC36
B	-31	HIS	-	expression tag	UNP Q9ZC36
B	-30	HIS	-	expression tag	UNP Q9ZC36
B	-29	HIS	-	expression tag	UNP Q9ZC36
B	-28	HIS	-	expression tag	UNP Q9ZC36
B	-27	HIS	-	expression tag	UNP Q9ZC36
B	-26	HIS	-	expression tag	UNP Q9ZC36
B	-25	SER	-	expression tag	UNP Q9ZC36
B	-24	SER	-	expression tag	UNP Q9ZC36
B	-23	GLY	-	expression tag	UNP Q9ZC36
B	-22	LEU	-	expression tag	UNP Q9ZC36
B	-21	VAL	-	expression tag	UNP Q9ZC36
B	-20	PRO	-	expression tag	UNP Q9ZC36
B	-19	ARG	-	expression tag	UNP Q9ZC36
B	-18	GLY	-	expression tag	UNP Q9ZC36
B	-17	SER	-	expression tag	UNP Q9ZC36
B	-16	HIS	-	expression tag	UNP Q9ZC36
B	-15	MET	-	expression tag	UNP Q9ZC36
B	-14	ALA	-	expression tag	UNP Q9ZC36
B	-13	SER	-	expression tag	UNP Q9ZC36
B	-12	MET	-	expression tag	UNP Q9ZC36
B	-11	THR	-	expression tag	UNP Q9ZC36
B	-10	GLY	-	expression tag	UNP Q9ZC36
B	-9	GLY	-	expression tag	UNP Q9ZC36
B	-8	GLN	-	expression tag	UNP Q9ZC36
B	-7	GLN	-	expression tag	UNP Q9ZC36
B	-6	MET	-	expression tag	UNP Q9ZC36

*Continued on next page...*

Continued from previous page...

Chain	Residue	Modelled	Actual	Comment	Reference
B	-5	GLY	-	expression tag	UNP Q9ZC36
B	-4	ARG	-	expression tag	UNP Q9ZC36
B	-3	GLY	-	expression tag	UNP Q9ZC36
B	-2	SER	-	expression tag	UNP Q9ZC36
B	-1	GLU	-	expression tag	UNP Q9ZC36
B	0	PHE	-	expression tag	UNP Q9ZC36
B	31	GLY	MET	engineered mutation	UNP Q9ZC36

- Molecule 2 is COENZYME A (CCD ID: COA) (formula: C<sub>21</sub>H<sub>36</sub>N<sub>7</sub>O<sub>16</sub>P<sub>3</sub>S).



Mol	Chain	Residues	Atoms							ZeroOcc	AltConf
			Total	C	H	N	O	P	S		
2	A	1	80	21	32	7	16	3	1	0	0
2	B	1	80	21	32	7	16	3	1	0	0

- Molecule 3 is ACETATE ION (CCD ID: ACT) (formula: C<sub>2</sub>H<sub>3</sub>O<sub>2</sub>).



Mol	Chain	Residues	Atoms				ZeroOcc	AltConf
3	A	1	Total	C	H	O	0	0
			6	2	3	1		
3	B	1	Total	C	O		0	0
			3	2	1			

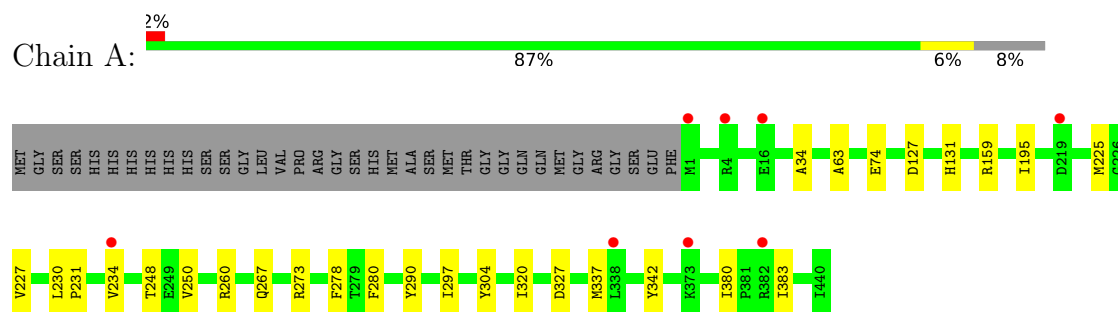
- Molecule 4 is water.

Mol	Chain	Residues	Atoms		ZeroOcc	AltConf
4	A	315	Total	O	0	0
			315	315		
4	B	276	Total	O	0	0
			276	276		

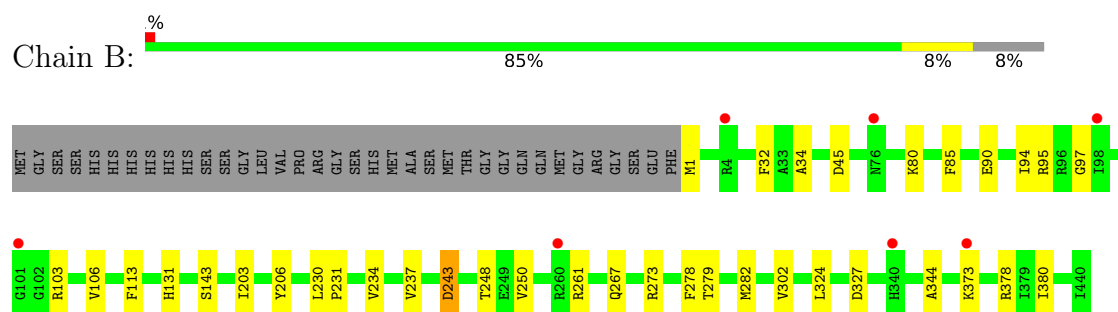
### 3 Residue-property plots [i](#)

These plots are drawn for all protein, RNA, DNA and oligosaccharide chains in the entry. The first graphic for a chain summarises the proportions of the various outlier classes displayed in the second graphic. The second graphic shows the sequence view annotated by issues in geometry and electron density. Residues are color-coded according to the number of geometric quality criteria for which they contain at least one outlier: green = 0, yellow = 1, orange = 2 and red = 3 or more. A red dot above a residue indicates a poor fit to the electron density ( $RSRZ > 2$ ). Stretches of 2 or more consecutive residues without any outlier are shown as a green connector. Residues present in the sample, but not in the model, are shown in grey.

- Molecule 1: 4-hydroxybutyrate coenzyme A transferase



- Molecule 1: 4-hydroxybutyrate coenzyme A transferase





## 4 Data and refinement statistics

Property	Value	Source
Space group	C 1 2 1	Depositor
Cell constants a, b, c, $\alpha$ , $\beta$ , $\gamma$	117.41Å 107.17Å 87.80Å 90.00° 120.36° 90.00°	Depositor
Resolution (Å)	43.75 – 2.01 43.75 – 2.01	Depositor EDS
% Data completeness (in resolution range)	95.8 (43.75-2.01) 95.5 (43.75-2.01)	Depositor EDS
$R_{merge}$	0.09	Depositor
$R_{sym}$	(Not available)	Depositor
$\langle I/\sigma(I) \rangle$ <sup>1</sup>	3.30 (at 2.01Å)	Xtriage
Refinement program	PHENIX 1.8.3_1479	Depositor
R, $R_{free}$	0.135 , 0.180 0.142 , 0.178	Depositor DCC
$R_{free}$ test set	2000 reflections (3.23%)	wwPDB-VP
Wilson B-factor (Å <sup>2</sup> )	21.0	Xtriage
Anisotropy	0.329	Xtriage
Bulk solvent $k_{sol}$ (e/Å <sup>3</sup> ), $B_{sol}$ (Å <sup>2</sup> )	0.41 , 51.9	EDS
L-test for twinning <sup>2</sup>	$\langle  L  \rangle = 0.50$ , $\langle L^2 \rangle = 0.33$	Xtriage
Estimated twinning fraction	No twinning to report.	Xtriage
$F_o, F_c$ correlation	0.97	EDS
Total number of atoms	14430	wwPDB-VP
Average B, all atoms (Å <sup>2</sup> )	32.0	wwPDB-VP

Xtriage's analysis on translational NCS is as follows: *The largest off-origin peak in the Patterson function is 4.36% of the height of the origin peak. No significant pseudotranslation is detected.*

<sup>1</sup>Intensities estimated from amplitudes.

<sup>2</sup>Theoretical values of  $\langle |L| \rangle$ ,  $\langle L^2 \rangle$  for acentric reflections are 0.5, 0.333 respectively for untwinned datasets, and 0.375, 0.2 for perfectly twinned datasets.

## 5 Model quality [i](#)

### 5.1 Standard geometry [i](#)

Bond lengths and bond angles in the following residue types are not validated in this section: ACT, COA

The Z score for a bond length (or angle) is the number of standard deviations the observed value is removed from the expected value. A bond length (or angle) with  $|Z| > 5$  is considered an outlier worth inspection. RMSZ is the root-mean-square of all Z scores of the bond lengths (or angles).

Mol	Chain	Bond lengths		Bond angles	
		RMSZ	$\# Z  > 5$	RMSZ	$\# Z  > 5$
1	A	0.51	1/3461 (0.0%)	0.61	0/4696
1	B	0.52	1/3510 (0.0%)	0.61	0/4761
All	All	0.52	2/6971 (0.0%)	0.61	0/9457

All (2) bond length outliers are listed below:

Mol	Chain	Res	Type	Atoms	Z	Observed(Å)	Ideal(Å)
1	B	243	ASP	C-O	-5.26	1.16	1.23
1	A	304	TYR	C-O	-5.02	1.17	1.23

There are no bond angle outliers.

There are no chirality outliers.

There are no planarity outliers.

### 5.2 Too-close contacts [i](#)

In the following table, the Non-H and H(model) columns list the number of non-hydrogen atoms and hydrogen atoms in the chain respectively. The H(added) column lists the number of hydrogen atoms added and optimized by MolProbity. The Clashes column lists the number of clashes within the asymmetric unit, whereas Symm-Clashes lists symmetry-related clashes.

Mol	Chain	Non-H	H(model)	H(added)	Clashes	Symm-Clashes
1	A	3396	3408	3396	15	0
1	B	3427	3439	3413	21	0
2	A	48	32	32	3	0
2	B	48	32	32	3	0
3	A	3	3	3	4	0
3	B	3	0	0	3	0
4	A	315	0	0	0	1

*Continued on next page...*

*Continued from previous page...*

Mol	Chain	Non-H	H(model)	H(added)	Clashes	Symm-Clashes
4	B	276	0	0	5	1
All	All	7516	6914	6876	42	1

The all-atom clashscore is defined as the number of clashes found per 1000 atoms (including hydrogen atoms). The all-atom clashscore for this structure is 3.

All (42) close contacts within the same asymmetric unit are listed below, sorted by their clash magnitude.

Atom-1	Atom-2	Interatomic distance (Å)	Clash overlap (Å)
1:B:94:ILE:HD11	1:B:106:VAL:HB	1.57	0.86
1:B:267:GLN:O	1:B:273:ARG:NH1	2.09	0.85
2:A:501:COA:S1P	3:A:502:ACT:C	2.72	0.78
2:B:501:COA:S1P	3:B:502:ACT:C	2.72	0.77
2:B:501:COA:HS1	3:B:502:ACT:C	1.99	0.73
2:A:501:COA:S1P	3:A:502:ACT:O	2.51	0.69
1:B:45:ASP:OD2	4:B:817:HOH:O	2.10	0.69
1:B:94:ILE:O	4:B:719:HOH:O	2.10	0.68
1:B:243:ASP:OD1	4:B:845:HOH:O	2.13	0.66
2:A:501:COA:HS1	3:A:502:ACT:C	2.11	0.62
1:A:127:ASP:OD1	1:A:159:ARG:NH2	2.30	0.60
2:B:501:COA:S1P	3:B:502:ACT:OXT	2.63	0.57
1:B:90:GLU:O	1:B:94:ILE:HG12	2.06	0.56
1:A:225:MET:HE1	1:A:320:ILE:HD12	1.90	0.54
1:A:260:ARG:HD3	1:A:290:TYR:CE1	2.44	0.52
1:A:267:GLN:O	1:A:273:ARG:NH1	2.43	0.51
1:A:250:VAL:HG22	1:A:280:PHE:CE1	2.46	0.50
1:B:324:LEU:O	1:B:378:ARG:HD3	2.11	0.50
1:B:80:LYS:HB3	4:B:828:HOH:O	2.12	0.49
1:B:327:ASP:HA	1:B:380:ILE:O	2.13	0.49
1:A:327:ASP:HA	1:A:380:ILE:O	2.13	0.47
1:B:95:ARG:NH2	4:B:752:HOH:O	2.43	0.47
1:A:337:MET:HE3	1:A:342:TYR:CE1	2.49	0.47
1:A:63:ALA:HB1	1:A:195:ILE:HD13	1.96	0.46
1:A:230:LEU:HB3	1:A:231:PRO:HD3	1.97	0.46
1:A:248:THR:O	1:A:278:PHE:HA	2.15	0.46
1:B:97:GLY:O	1:B:103:ARG:N	2.48	0.46
1:B:250:VAL:HG21	1:B:282:MET:HE2	1.99	0.45
1:B:230:LEU:HB3	1:B:231:PRO:HD3	1.99	0.44
1:A:260:ARG:HD3	1:A:290:TYR:CZ	2.53	0.44
1:B:34:ALA:HB1	1:B:131:HIS:CE1	2.53	0.43
1:B:248:THR:O	1:B:278:PHE:HA	2.18	0.43

*Continued on next page...*

Continued from previous page...

Atom-1	Atom-2	Interatomic distance (Å)	Clash overlap (Å)
1:A:327:ASP:HB3	1:A:383:ILE:HG13	2.00	0.42
1:A:227:VAL:HG11	3:A:502:ACT:H2	2.00	0.42
1:B:85:PHE:CD2	1:B:344:ALA:HB3	2.54	0.42
1:B:261:ARG:HG2	1:B:261:ARG:NH1	2.35	0.41
1:B:113[B]:PHE:CD2	1:B:302:VAL:HG21	2.55	0.41
1:B:234:VAL:O	1:B:237:VAL:HG12	2.21	0.41
1:A:34:ALA:HB1	1:A:131:HIS:CE1	2.56	0.41
1:B:94:ILE:CD1	1:B:106:VAL:HB	2.39	0.40
1:B:203:ILE:HD11	1:B:206:TYR:CE1	2.56	0.40
1:A:278:PHE:HE1	1:A:297:ILE:HG22	1.87	0.40

All (1) symmetry-related close contacts are listed below. The label for Atom-2 includes the symmetry operator and encoded unit-cell translations to be applied.

Atom-1	Atom-2	Interatomic distance (Å)	Clash overlap (Å)
4:A:895:HOH:O	4:B:712:HOH:O[4_455]	2.15	0.05

## 5.3 Torsion angles

### 5.3.1 Protein backbone

In the following table, the Percentiles column shows the percent Ramachandran outliers of the chain as a percentile score with respect to all X-ray entries followed by that with respect to entries of similar resolution.

The Analysed column shows the number of residues for which the backbone conformation was analysed, and the total number of residues.

Mol	Chain	Analysed	Favoured	Allowed	Outliers	Percentiles	
1	A	438/476 (92%)	425 (97%)	13 (3%)	0	100	100
1	B	443/476 (93%)	431 (97%)	11 (2%)	1 (0%)	43	40
All	All	881/952 (92%)	856 (97%)	24 (3%)	1 (0%)	48	45

All (1) Ramachandran outliers are listed below:

Mol	Chain	Res	Type
1	B	32	PHE

### 5.3.2 Protein sidechains [i](#)

In the following table, the Percentiles column shows the percent sidechain outliers of the chain as a percentile score with respect to all X-ray entries followed by that with respect to entries of similar resolution.

The Analysed column shows the number of residues for which the sidechain conformation was analysed, and the total number of residues.

Mol	Chain	Analysed	Rotameric	Outliers	Percentiles	
1	A	365/393 (93%)	363 (100%)	2 (0%)	81	81
1	B	370/393 (94%)	366 (99%)	4 (1%)	65	68
All	All	735/786 (94%)	729 (99%)	6 (1%)	73	75

All (6) residues with a non-rotameric sidechain are listed below:

Mol	Chain	Res	Type
1	A	74	GLU
1	A	234	VAL
1	B	1	MET
1	B	143	SER
1	B	279	THR
1	B	373	LYS

Sometimes sidechains can be flipped to improve hydrogen bonding and reduce clashes. All (3) such sidechains are listed below:

Mol	Chain	Res	Type
1	A	316	ASN
1	B	211	HIS
1	B	242	ASN

### 5.3.3 RNA [i](#)

There are no RNA molecules in this entry.

## 5.4 Non-standard residues in protein, DNA, RNA chains [i](#)

There are no non-standard protein/DNA/RNA residues in this entry.

## 5.5 Carbohydrates [i](#)

There are no oligosaccharides in this entry.

## 5.6 Ligand geometry [i](#)

4 ligands are modelled in this entry.

In the following table, the Counts columns list the number of bonds (or angles) for which Mogul statistics could be retrieved, the number of bonds (or angles) that are observed in the model and the number of bonds (or angles) that are defined in the Chemical Component Dictionary. The Link column lists molecule types, if any, to which the group is linked. The Z score for a bond length (or angle) is the number of standard deviations the observed value is removed from the expected value. A bond length (or angle) with  $|Z| > 2$  is considered an outlier worth inspection. RMSZ is the root-mean-square of all Z scores of the bond lengths (or angles).

Mol	Type	Chain	Res	Link	Bond lengths			Bond angles		
					Counts	RMSZ	# Z  > 2	Counts	RMSZ	# Z  > 2
2	COA	B	501	-	47,50,50	1.57	9 (19%)	69,75,75	2.90	23 (33%)
2	COA	A	501	-	47,50,50	2.28	12 (25%)	69,75,75	1.71	13 (18%)
3	ACT	A	502	1	1,2,3	3.06	1 (100%)	0,1,3	-	-
3	ACT	B	502	1	2,2,3	2.20	1 (50%)	1,1,3	0.46	0

In the following table, the Chirals column lists the number of chiral outliers, the number of chiral centers analysed, the number of these observed in the model and the number defined in the Chemical Component Dictionary. Similar counts are reported in the Torsion and Rings columns. '-' means no outliers of that kind were identified.

Mol	Type	Chain	Res	Link	Chirals	Torsions	Rings
2	COA	B	501	-	-	3/48/64/64	0/3/3/3
2	COA	A	501	-	-	2/48/64/64	0/3/3/3

All (23) bond length outliers are listed below:

Mol	Chain	Res	Type	Atoms	Z	Observed(Å)	Ideal(Å)
2	A	501	COA	O4B-C1B	8.39	1.61	1.42
2	A	501	COA	O4B-C4B	-6.27	1.31	1.45
2	A	501	COA	C2B-C1B	-5.46	1.36	1.53
2	B	501	COA	C5A-N7A	-4.16	1.31	1.39
2	B	501	COA	C8A-N9A	-3.94	1.30	1.37
2	A	501	COA	C5P-N4P	3.85	1.42	1.33
2	A	501	COA	C9P-N8P	3.26	1.41	1.33
2	A	501	COA	O3B-C3B	-3.15	1.33	1.44

*Continued on next page...*

*Continued from previous page...*

Mol	Chain	Res	Type	Atoms	Z	Observed(Å)	Ideal(Å)
3	A	502	ACT	O-C	-3.06	1.07	1.20
3	B	502	ACT	OXT-C	-3.05	1.14	1.42
2	A	501	COA	C6A-N6A	3.02	1.41	1.34
2	B	501	COA	C4A-N9A	-2.93	1.31	1.37
2	B	501	COA	P1A-O2A	-2.72	1.42	1.55
2	A	501	COA	O9P-C9P	-2.56	1.18	1.23
2	B	501	COA	P1A-O1A	-2.53	1.42	1.50
2	A	501	COA	O2B-C2B	2.40	1.48	1.43
2	A	501	COA	C5A-C4A	-2.31	1.35	1.39
2	A	501	COA	CCP-CBP	2.29	1.56	1.52
2	B	501	COA	P2A-O5A	-2.25	1.44	1.55
2	B	501	COA	C5A-C4A	2.25	1.43	1.39
2	A	501	COA	C2A-N1A	2.12	1.37	1.33
2	B	501	COA	C5A-C6A	2.10	1.46	1.41
2	B	501	COA	O5P-C5P	-2.05	1.19	1.23

All (36) bond angle outliers are listed below:

Mol	Chain	Res	Type	Atoms	Z	Observed(°)	Ideal(°)
2	B	501	COA	CEP-CBP-CAP	-8.32	94.59	108.77
2	B	501	COA	O4B-C4B-C5B	7.69	133.97	109.33
2	B	501	COA	CDP-CBP-CAP	-7.28	96.36	108.77
2	B	501	COA	C5A-C4A-N3A	-6.88	117.24	126.72
2	B	501	COA	CEP-CBP-CCP	6.80	119.45	108.22
2	B	501	COA	CEP-CBP-CDP	6.17	121.51	109.20
2	B	501	COA	N3A-C4A-N9A	6.09	137.53	127.17
2	A	501	COA	N3A-C2A-N1A	-5.31	120.55	128.58
2	A	501	COA	N6A-C6A-N1A	-5.24	106.70	118.38
2	B	501	COA	CDP-CBP-CCP	4.89	116.29	108.22
2	A	501	COA	C5A-C4A-N3A	-4.89	119.99	126.72
2	B	501	COA	C2A-N3A-C4A	4.31	122.37	111.83
2	B	501	COA	C2B-C3B-C4B	4.13	110.48	103.24
2	B	501	COA	C4B-O4B-C1B	4.08	118.46	109.47
2	A	501	COA	C5A-C6A-N6A	3.97	133.11	123.29
2	B	501	COA	O4B-C4B-C3B	-3.92	96.66	104.92
2	B	501	COA	P3B-O3B-C3B	3.59	133.01	123.43
2	B	501	COA	O6A-CCP-CBP	3.49	116.15	110.55
2	B	501	COA	C5B-C4B-C3B	-3.48	102.80	114.38
2	A	501	COA	N9A-C8A-N7A	-3.46	109.03	113.94
2	A	501	COA	C2P-C3P-N4P	-3.28	104.85	112.31
2	A	501	COA	C2A-N3A-C4A	3.28	119.84	111.83
2	B	501	COA	N3A-C2A-N1A	-3.15	123.81	128.58

*Continued on next page...*

*Continued from previous page...*

Mol	Chain	Res	Type	Atoms	Z	Observed(°)	Ideal(°)
2	B	501	COA	C4A-N9A-C8A	3.12	109.02	105.74
2	B	501	COA	C4A-C5A-N7A	-3.01	107.14	110.58
2	B	501	COA	O3B-C3B-C2B	-2.82	101.58	111.68
2	A	501	COA	N3A-C4A-N9A	2.79	131.91	127.17
2	B	501	COA	C5A-N7A-C8A	2.60	107.54	103.45
2	A	501	COA	CEP-CBP-CAP	2.54	113.10	108.77
2	A	501	COA	C6A-C5A-C4A	2.29	120.31	117.18
2	B	501	COA	N6A-C6A-N1A	2.11	123.07	118.38
2	A	501	COA	C5A-C4A-N9A	2.10	108.10	105.81
2	A	501	COA	C5A-N7A-C8A	2.09	106.73	103.45
2	A	501	COA	CDP-CBP-CAP	2.06	112.29	108.77
2	B	501	COA	O2A-P1A-O3A	2.05	112.81	107.27
2	B	501	COA	N9A-C8A-N7A	-2.03	111.05	113.94

There are no chirality outliers.

All (5) torsion outliers are listed below:

Mol	Chain	Res	Type	Atoms
2	B	501	COA	CDP-CBP-CCP-O6A
2	B	501	COA	N8P-C9P-CAP-OAP
2	A	501	COA	C2P-C3P-N4P-C5P
2	A	501	COA	C3B-O3B-P3B-O9A
2	B	501	COA	O9P-C9P-CAP-OAP

There are no ring outliers.

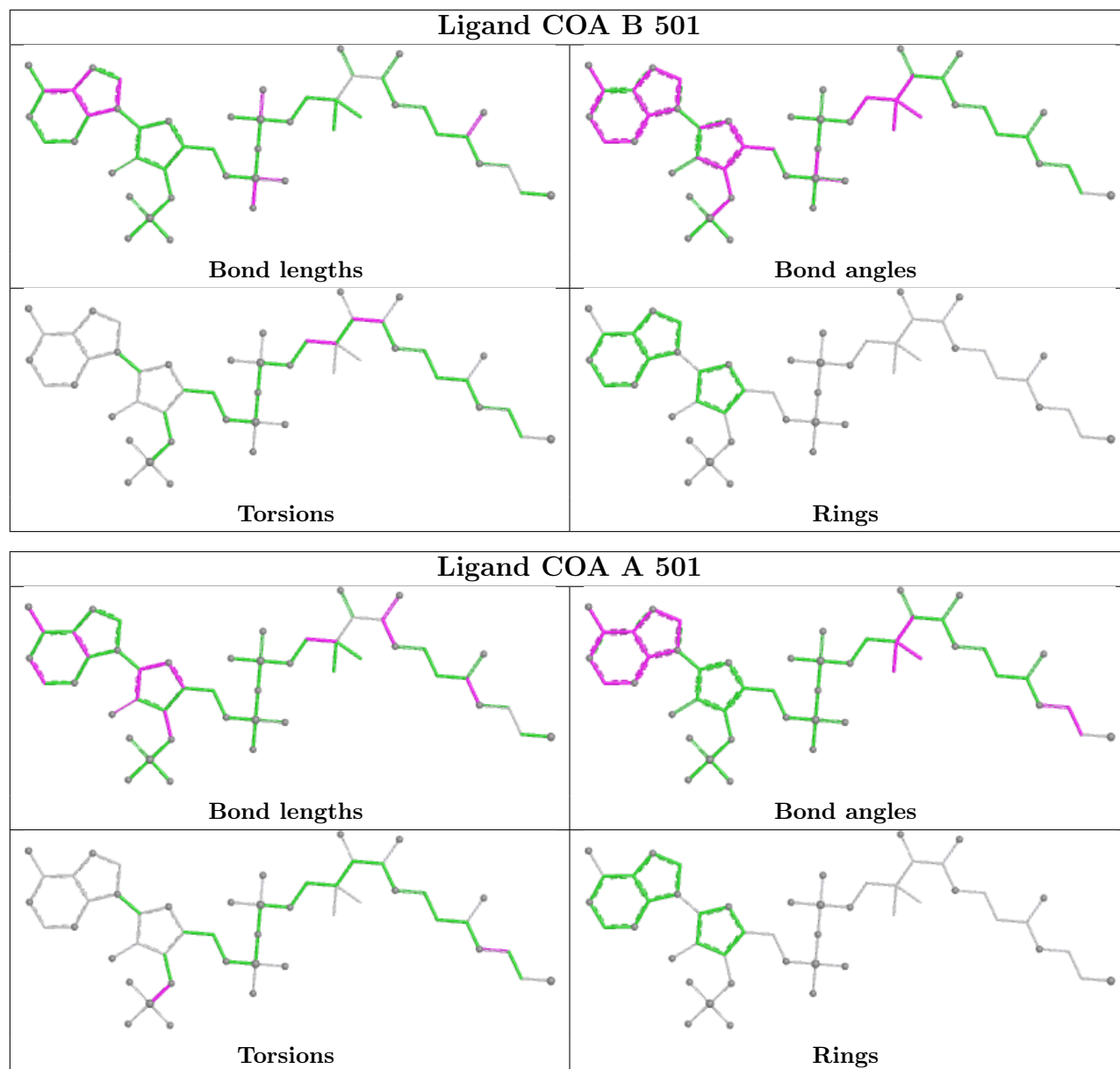
4 monomers are involved in 7 short contacts:

Mol	Chain	Res	Type	Clashes	Symm-Clashes
2	B	501	COA	3	0
2	A	501	COA	3	0
3	A	502	ACT	4	0
3	B	502	ACT	3	0

The following is a two-dimensional graphical depiction of Mogul quality analysis of bond lengths, bond angles, torsion angles, and ring geometry for all instances of the Ligand of Interest. In addition, ligands with molecular weight > 250 and outliers as shown on the validation Tables will also be included. For torsion angles, if less than 5% of the Mogul distribution of torsion angles is within 10 degrees of the torsion angle in question, then that torsion angle is considered an outlier. Any bond that is central to one or more torsion angles identified as an outlier by Mogul will be highlighted in the graph. For rings, the root-mean-square deviation (RMSD) between the ring in question and similar rings identified by Mogul is calculated over all ring torsion angles. If the average RMSD is greater than 60 degrees and the minimal RMSD between the ring in question and



any Mogul-identified rings is also greater than 60 degrees, then that ring is considered an outlier. The outliers are highlighted in purple. The color gray indicates Mogul did not find sufficient equivalents in the CSD to analyse the geometry.



## 5.7 Other polymers [i](#)

There are no such residues in this entry.

## 5.8 Polymer linkage issues [i](#)

There are no chain breaks in this entry.

## 6 Fit of model and data [i](#)

### 6.1 Protein, DNA and RNA chains [i](#)

In the following table, the column labelled ‘#RSRZ> 2’ contains the number (and percentage) of RSRZ outliers, followed by percent RSRZ outliers for the chain as percentile scores relative to all X-ray entries and entries of similar resolution. The OWAB column contains the minimum, median, 95<sup>th</sup> percentile and maximum values of the occupancy-weighted average B-factor per residue. The column labelled ‘Q< 0.9’ lists the number of (and percentage) of residues with an average occupancy less than 0.9.

Mol	Chain	Analysed	<RSRZ>	#RSRZ>2	OWAB(Å <sup>2</sup> )	Q<0.9
1	A	440/476 (92%)	-0.64	8 (1%) 67 68	14, 25, 63, 119	0
1	B	440/476 (92%)	-0.50	7 (1%) 70 70	11, 28, 66, 99	3 (0%)
All	All	880/952 (92%)	-0.57	15 (1%) 69 69	11, 27, 64, 119	3 (0%)

All (15) RSRZ outliers are listed below:

Mol	Chain	Res	Type	RSRZ
1	A	1	MET	3.9
1	B	98	ILE	3.6
1	A	4	ARG	2.8
1	A	234	VAL	2.8
1	B	101	GLY	2.7
1	A	373	LYS	2.4
1	B	4	ARG	2.3
1	B	373	LYS	2.3
1	B	76	ASN	2.3
1	A	219	ASP	2.2
1	A	382	ARG	2.2
1	B	340	HIS	2.2
1	A	338	LEU	2.1
1	A	16	GLU	2.1
1	B	260	ARG	2.1

### 6.2 Non-standard residues in protein, DNA, RNA chains [i](#)

There are no non-standard protein/DNA/RNA residues in this entry.

### 6.3 Carbohydrates [i](#)

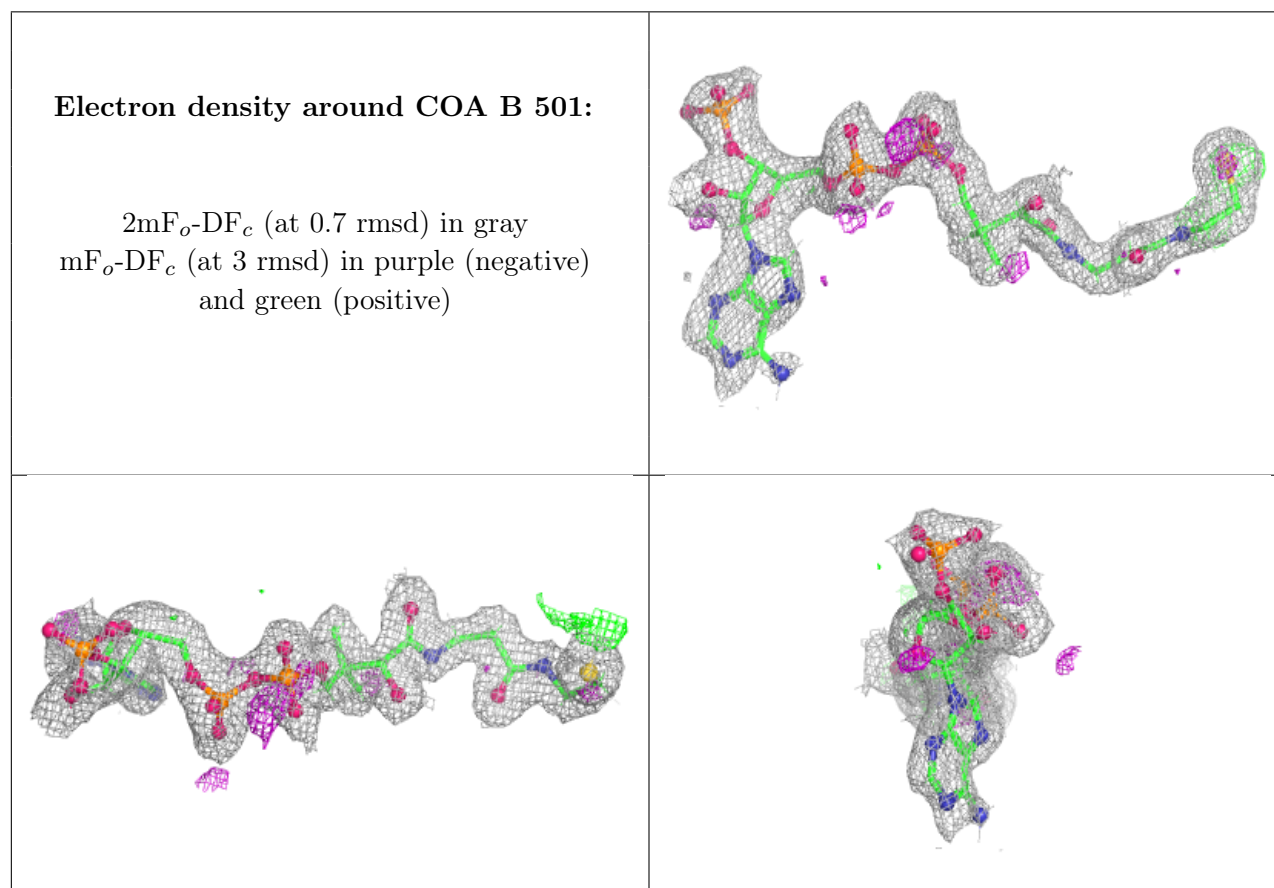
There are no oligosaccharides in this entry.

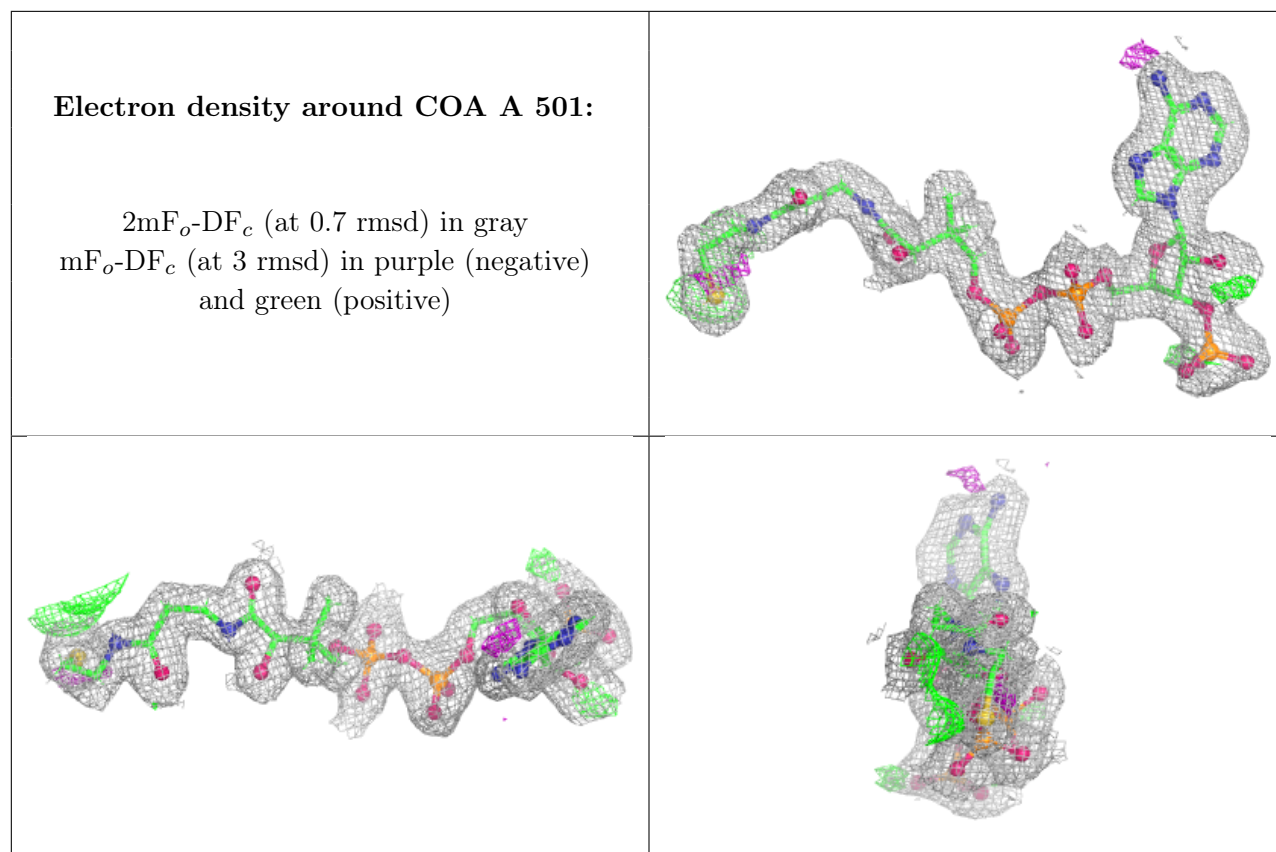
## 6.4 Ligands [i](#)

In the following table, the Atoms column lists the number of modelled atoms in the group and the number defined in the chemical component dictionary. The B-factors column lists the minimum, median, 95<sup>th</sup> percentile and maximum values of B factors of atoms in the group. The column labelled 'Q<0.9' lists the number of atoms with occupancy less than 0.9.

Mol	Type	Chain	Res	Atoms	RSCC	RSR	B-factors(Å <sup>2</sup> )	Q<0.9
3	ACT	B	502	3/4	0.92	0.21	8,8,9,36	0
3	ACT	A	502	3/4	0.94	0.20	9,32,39,39	0
2	COA	B	501	48/48	0.94	0.11	18,45,100,120	0
2	COA	A	501	48/48	0.96	0.07	16,30,54,118	0

The following is a graphical depiction of the model fit to experimental electron density of all instances of the Ligand of Interest. In addition, ligands with molecular weight > 250 and outliers as shown on the geometry validation Tables will also be included. Each fit is shown from different orientation to approximate a three-dimensional view.





## 6.5 Other polymers [i](#)

There are no such residues in this entry.