



Full wwPDB X-ray Structure Validation Report ⓘ

Mar 9, 2026 – 11:30 PM UTC

PDB ID : 4OGJ / pdb_00004ogj
Title : Crystal Structure of the first bromodomain of human BRD4 in complex with the inhibitor TG-101348
Authors : Filippakopoulos, P.; Picaud, S.; Jose, B.; Martin, S.; Fedorov, O.; von Delft, F.; Arrowsmith, C.H.; Edwards, A.M.; Bountra, C.; Knapp, S.; Structural Genomics Consortium (SGC)
Deposited on : 2014-01-16
Resolution : 1.65 Å(reported)

This is a Full wwPDB X-ray Structure Validation Report for a publicly released PDB entry.

We welcome your comments at validation@mail.wwpdb.org

A user guide is available at

<https://www.wwpdb.org/validation/2017/XrayValidationReportHelp>

with specific help available everywhere you see the ⓘ symbol.

The types of validation reports are described at

<http://www.wwpdb.org/validation/2017/FAQs#types>.

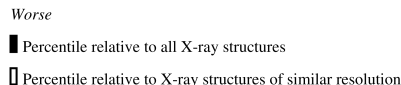
The following versions of software and data (see [references](#) ①) were used in the production of this report:

MolProbity	:	4-5-2 with Phenix2.0
Mogul	:	2022.3.0, CSD as543be (2022)
Xtriage (Phenix)	:	2.0
EDS	:	3.0
Buster-report	:	wwPDB partial adaption of 1.1.7 (2018)
Percentile statistics	:	20250101.v01 (using entries in the PDB archive January 1st 2025)
CCP4	:	9.0.010 (Gargrove)
Density-Fitness	:	1.0.12
Ideal geometry (proteins)	:	Engh & Huber (2001)
Ideal geometry (DNA, RNA)	:	Parkinson et al. (1996)
Validation Pipeline (wwPDB-VP)	:	2.49

i

X-RAY DIFFRACTION

Percentile scores (ranging between 0-100) for global validation metrics of the entry are shown in the following graphic. The table shows the number of entries on which the scores are based.



Metric	Whole archive (#Entries)	Similar resolution (#Entries, resolution range(Å))
R_{free}	180053	2563 (1.66-1.66)
Clashscore	190562	2662 (1.66-1.66)
Ramachandran outliers	187476	2621 (1.66-1.66)
Sidechain outliers	187428	2621 (1.66-1.66)
RSRZ outliers	180081	2564 (1.66-1.66)

The table below summarises the geometric issues observed across the polymeric chains and their fit to the electron density. The red, orange, yellow and green segments of the lower bar indicate the fraction of residues that contain outliers for ≥ 3 , 2, 1 and 0 types of geometric quality criteria respectively. A grey segment represents the fraction of residues that are not modelled. The numeric value for each fraction is indicated below the corresponding segment, with a dot representing fractions $\leq 5\%$. The upper red bar (where present) indicates the fraction of residues that have poor fit to the electron density. The numeric value is given above the bar.

Mol	Chain	Length	Quality of chain
1	A	127	<div> <div></div> <div>91%</div> <div>9%</div> </div>
1	B	127	<div> <div></div> <div>95%</div> <div>5%</div> </div>

2 Entry composition [i](#)

There are 4 unique types of molecules in this entry. The entry contains 2551 atoms, of which 0 are hydrogens and 0 are deuteriums.

In the tables below, the ZeroOcc column contains the number of atoms modelled with zero occupancy, the AltConf column contains the number of residues with at least one atom in alternate conformation and the Trace column contains the number of residues modelled with at most 2 atoms.

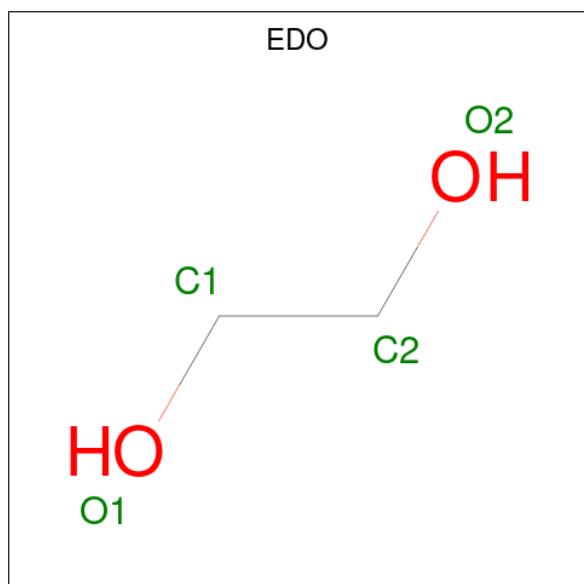
- Molecule 1 is a protein called Bromodomain-containing protein 4.

Mol	Chain	Residues	Atoms					ZeroOcc	AltConf	Trace
1	A	127	Total	C	N	O	S	4	8	0
			1095	712	177	199	7			
1	B	127	Total	C	N	O	S	0	4	0
			1079	700	175	196	8			

There are 4 discrepancies between the modelled and reference sequences:

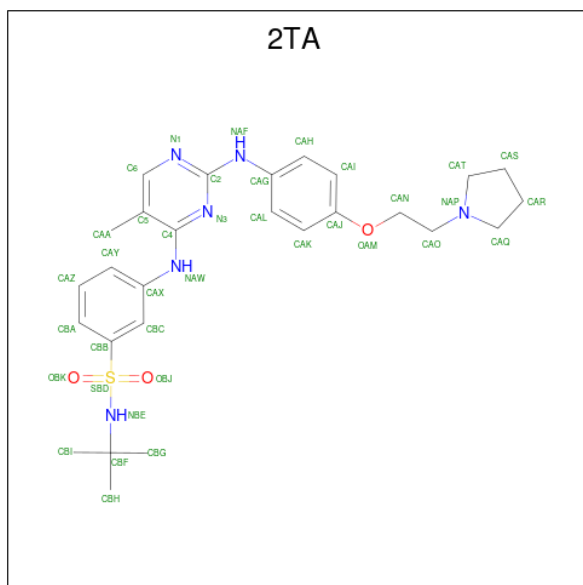
Chain	Residue	Modelled	Actual	Comment	Reference
A	42	SER	-	expression tag	UNP O60885
A	43	MET	-	expression tag	UNP O60885
B	42	SER	-	expression tag	UNP O60885
B	43	MET	-	expression tag	UNP O60885

- Molecule 2 is 1,2-ETHANEDIOL (CCD ID: EDO) (formula: C₂H₆O₂).



Mol	Chain	Residues	Atoms	ZeroOcc	AltConf
2	A	1	Total C O 4 2 2	0	0
2	A	1	Total C O 4 2 2	0	0
2	B	1	Total C O 4 2 2	0	0

- Molecule 3 is N-tert-butyl-3-{[5-methyl-2-({4-[2-(pyrrolidin-1-yl)ethoxy]phenyl}amino)pyrimidin-4-yl]amino}benzenesulfonamide (CCD ID: 2TA) (formula: C₂₇H₃₆N₆O₃S).



Mol	Chain	Residues	Atoms	ZeroOcc	AltConf
3	A	1	Total C N O S 37 27 6 3 1	0	0
3	B	1	Total C N O S 37 27 6 3 1	0	0

- Molecule 4 is water.

Mol	Chain	Residues	Atoms	ZeroOcc	AltConf
4	A	155	Total O 155 155	0	0
4	B	136	Total O 136 136	0	0

3 Residue-property plots [i](#)

These plots are drawn for all protein, RNA, DNA and oligosaccharide chains in the entry. The first graphic for a chain summarises the proportions of the various outlier classes displayed in the second graphic. The second graphic shows the sequence view annotated by issues in geometry and electron density. Residues are color-coded according to the number of geometric quality criteria for which they contain at least one outlier: green = 0, yellow = 1, orange = 2 and red = 3 or more. A red dot above a residue indicates a poor fit to the electron density ($RSRZ > 2$). Stretches of 2 or more consecutive residues without any outlier are shown as a green connector. Residues present in the sample, but not in the model, are shown in grey.

- Molecule 1: Bromodomain-containing protein 4



- Molecule 1: Bromodomain-containing protein 4



4 Data and refinement statistics

Property	Value	Source
Space group	P 21 21 21	Depositor
Cell constants a, b, c, α , β , γ	42.16Å 59.41Å 111.67Å 90.00° 90.00° 90.00°	Depositor
Resolution (Å)	19.56 – 1.65 19.56 – 1.65	Depositor EDS
% Data completeness (in resolution range)	99.2 (19.56-1.65) 99.2 (19.56-1.65)	Depositor EDS
R_{merge}	0.05	Depositor
R_{sym}	0.05	Depositor
$\langle I/\sigma(I) \rangle$ ¹	3.57 (at 1.65Å)	Xtriage
Refinement program	REFMAC 5.7.0032	Depositor
R, R_{free}	0.150 , 0.182 0.163 , 0.191	Depositor DCC
R_{free} test set	1726 reflections (5.00%)	wwPDB-VP
Wilson B-factor (Å ²)	14.7	Xtriage
Anisotropy	0.060	Xtriage
Bulk solvent k_{sol} (e/Å ³), B_{sol} (Å ²)	0.37 , 41.9	EDS
L-test for twinning ²	$\langle L \rangle = 0.49$, $\langle L^2 \rangle = 0.32$	Xtriage
Estimated twinning fraction	No twinning to report.	Xtriage
F_o, F_c correlation	0.96	EDS
Total number of atoms	2551	wwPDB-VP
Average B, all atoms (Å ²)	19.0	wwPDB-VP

Xtriage's analysis on translational NCS is as follows: *The analyses of the Patterson function reveals a significant off-origin peak that is 42.84 % of the origin peak, indicating pseudo-translational symmetry. The chance of finding a peak of this or larger height randomly in a structure without pseudo-translational symmetry is equal to 1.9233e-04. The detected translational NCS is most likely also responsible for the elevated intensity ratio.*

¹Intensities estimated from amplitudes.

²Theoretical values of $\langle |L| \rangle$, $\langle L^2 \rangle$ for acentric reflections are 0.5, 0.333 respectively for untwinned datasets, and 0.375, 0.2 for perfectly twinned datasets.

5 Model quality

5.1 Standard geometry

Bond lengths and bond angles in the following residue types are not validated in this section: EDO, 2TA

The Z score for a bond length (or angle) is the number of standard deviations the observed value is removed from the expected value. A bond length (or angle) with $|Z| > 5$ is considered an outlier worth inspection. RMSZ is the root-mean-square of all Z scores of the bond lengths (or angles).

Mol	Chain	Bond lengths		Bond angles	
		RMSZ	# Z >5	RMSZ	# Z >5
1	A	0.91	0/1149	0.89	0/1562
1	B	0.93	0/1121	0.92	0/1524
All	All	0.92	0/2270	0.90	0/3086

There are no bond length outliers.

There are no bond angle outliers.

There are no chirality outliers.

There are no planarity outliers.

5.2 Too-close contacts

In the following table, the Non-H and H(model) columns list the number of non-hydrogen atoms and hydrogen atoms in the chain respectively. The H(added) column lists the number of hydrogen atoms added and optimized by MolProbity. The Clashes column lists the number of clashes within the asymmetric unit, whereas Symm-Clashes lists symmetry-related clashes.

Mol	Chain	Non-H	H(model)	H(added)	Clashes	Symm-Clashes
1	A	1095	0	1105	13	0
1	B	1079	0	1079	4	0
2	A	8	0	12	2	0
2	B	4	0	6	0	0
3	A	37	0	36	1	0
3	B	37	0	36	1	0
4	A	155	0	0	2	1
4	B	136	0	0	2	1
All	All	2551	0	2274	19	1

The all-atom clashscore is defined as the number of clashes found per 1000 atoms (including hydrogen atoms). The all-atom clashscore for this structure is 4.

All (19) close contacts within the same asymmetric unit are listed below, sorted by their clash magnitude.

Atom-1	Atom-2	Interatomic distance (Å)	Clash overlap (Å)
1:A:51[B]:SER:HB3	1:A:116[B]:ASN:HD22	1.32	0.95
1:A:111[A]:LYS:HE2	2:A:202:EDO:O2	1.75	0.86
1:A:51[B]:SER:HB3	1:A:116[B]:ASN:ND2	2.10	0.63
1:A:61[B]:ASN:OD1	1:A:168:GLU:HB2	1.98	0.63
1:A:111[A]:LYS:HE2	2:A:202:EDO:C2	2.31	0.60
1:A:51[B]:SER:CB	1:A:116[B]:ASN:HD22	2.13	0.58
1:A:127[A]:GLN:NE2	4:A:445:HOH:O	2.37	0.57
1:A:127[B]:GLN:HG3	4:A:368:HOH:O	2.03	0.57
1:A:71:LEU:HD21	1:A:111[B]:LYS:HB2	1.88	0.54
1:A:71:LEU:HD21	1:A:111[A]:LYS:HB2	1.93	0.48
1:B:121:ASN:OD1	1:B:124[B]:GLU:HG3	2.14	0.48
1:A:111[B]:LYS:NZ	1:A:115[B]:GLU:OE1	2.40	0.47
3:A:203:2TA:N3	3:A:203:2TA:H24	2.31	0.46
1:B:73:THR:HG22	1:B:156:LEU:HD21	1.99	0.44
1:A:81:TRP:CG	1:A:82:PRO:HD3	2.54	0.42
1:B:49:GLU:OE1	4:B:350:HOH:O	2.21	0.42
3:B:202:2TA:N3	3:B:202:2TA:H17	2.35	0.41
1:B:167:GLU:HG3	4:B:387:HOH:O	2.21	0.41
1:A:71:LEU:HD21	1:A:111[B]:LYS:CB	2.50	0.40

All (1) symmetry-related close contacts are listed below. The label for Atom-2 includes the symmetry operator and encoded unit-cell translations to be applied.

Atom-1	Atom-2	Interatomic distance (Å)	Clash overlap (Å)
4:A:363:HOH:O	4:B:342:HOH:O[2_664]	2.06	0.14

5.3 Torsion angles ⓘ

5.3.1 Protein backbone ⓘ

In the following table, the Percentiles column shows the percent Ramachandran outliers of the chain as a percentile score with respect to all X-ray entries followed by that with respect to entries of similar resolution.

The Analysed column shows the number of residues for which the backbone conformation was analysed, and the total number of residues.

Mol	Chain	Analysed	Favoured	Allowed	Outliers	Percentiles	
1	A	133/127 (105%)	132 (99%)	1 (1%)	0	100	100
1	B	129/127 (102%)	129 (100%)	0	0	100	100
All	All	262/254 (103%)	261 (100%)	1 (0%)	0	100	100

There are no Ramachandran outliers to report.

5.3.2 Protein sidechains ⓘ

In the following table, the Percentiles column shows the percent sidechain outliers of the chain as a percentile score with respect to all X-ray entries followed by that with respect to entries of similar resolution.

The Analysed column shows the number of residues for which the sidechain conformation was analysed, and the total number of residues.

Mol	Chain	Analysed	Rotameric	Outliers	Percentiles	
1	A	126/120 (105%)	124 (98%)	2 (2%)	55	34
1	B	123/120 (102%)	123 (100%)	0	100	100
All	All	249/240 (104%)	247 (99%)	2 (1%)	73	60

All (2) residues with a non-rotameric sidechain are listed below:

Mol	Chain	Res	Type
1	A	42	SER
1	A	91	LYS

Sometimes sidechains can be flipped to improve hydrogen bonding and reduce clashes. All (5) such sidechains are listed below:

Mol	Chain	Res	Type
1	A	78	GLN
1	A	85	GLN
1	A	130	ASN
1	B	85	GLN
1	B	127	GLN

5.3.3 RNA ⓘ

There are no RNA molecules in this entry.

5.4 Non-standard residues in protein, DNA, RNA chains [i](#)

There are no non-standard protein/DNA/RNA residues in this entry.

5.5 Carbohydrates [i](#)

There are no oligosaccharides in this entry.

5.6 Ligand geometry [i](#)

5 ligands are modelled in this entry.

In the following table, the Counts columns list the number of bonds (or angles) for which Mogul statistics could be retrieved, the number of bonds (or angles) that are observed in the model and the number of bonds (or angles) that are defined in the Chemical Component Dictionary. The Link column lists molecule types, if any, to which the group is linked. The Z score for a bond length (or angle) is the number of standard deviations the observed value is removed from the expected value. A bond length (or angle) with $|Z| > 2$ is considered an outlier worth inspection. RMSZ is the root-mean-square of all Z scores of the bond lengths (or angles).

Mol	Type	Chain	Res	Link	Bond lengths			Bond angles		
					Counts	RMSZ	$\# Z > 2$	Counts	RMSZ	$\# Z > 2$
2	EDO	A	202	-	3,3,3	0.37	0	2,2,2	0.45	0
2	EDO	B	201	-	3,3,3	0.65	0	2,2,2	0.29	0
3	2TA	A	203	-	40,40,40	1.87	3 (7%)	56,57,57	1.95	21 (37%)
3	2TA	B	202	-	40,40,40	1.60	7 (17%)	56,57,57	2.20	16 (28%)
2	EDO	A	201	-	3,3,3	0.52	0	2,2,2	0.24	0

In the following table, the Chirals column lists the number of chiral outliers, the number of chiral centers analysed, the number of these observed in the model and the number defined in the Chemical Component Dictionary. Similar counts are reported in the Torsion and Rings columns. '-' means no outliers of that kind were identified.

Mol	Type	Chain	Res	Link	Chirals	Torsions	Rings
2	EDO	A	202	-	-	0/1/1/1	-
2	EDO	B	201	-	-	0/1/1/1	-
3	2TA	A	203	-	-	5/26/33/33	0/4/4/4
3	2TA	B	202	-	-	6/26/33/33	0/4/4/4
2	EDO	A	201	-	-	0/1/1/1	-

All (10) bond length outliers are listed below:

Mol	Chain	Res	Type	Atoms	Z	Observed(Å)	Ideal(Å)
3	A	203	2TA	OBK-SBD	6.94	1.51	1.43
3	A	203	2TA	OBJ-SBD	6.80	1.51	1.43
3	B	202	2TA	OBJ-SBD	5.48	1.49	1.43
3	B	202	2TA	C6-N1	3.76	1.42	1.34
3	B	202	2TA	CBB-SBD	3.63	1.82	1.76
3	A	203	2TA	C6-N1	3.22	1.41	1.34
3	B	202	2TA	OBK-SBD	2.99	1.47	1.43
3	B	202	2TA	CAO-CAN	2.21	1.57	1.50
3	B	202	2TA	CAA-C5	-2.16	1.47	1.51
3	B	202	2TA	CAH-CAI	2.05	1.42	1.38

All (37) bond angle outliers are listed below:

Mol	Chain	Res	Type	Atoms	Z	Observed(°)	Ideal(°)
3	B	202	2TA	N1-C2-N3	-5.60	121.00	126.42
3	B	202	2TA	C5-C6-N1	-5.14	119.94	125.09
3	B	202	2TA	CAO-NAP-CAT	-4.81	101.84	113.25
3	B	202	2TA	CAT-NAP-CAQ	4.41	109.25	104.04
3	A	203	2TA	N1-C2-N3	-4.35	122.21	126.42
3	B	202	2TA	NAW-C4-N3	4.26	125.38	119.08
3	A	203	2TA	CAA-C5-C4	4.22	125.81	122.10
3	B	202	2TA	CAR-CAQ-NAP	-4.17	98.99	103.90
3	B	202	2TA	CBF-NBE-SBD	-3.97	121.42	128.22
3	A	203	2TA	CAT-NAP-CAQ	3.76	108.48	104.04
3	A	203	2TA	NAW-C4-N3	3.70	124.55	119.08
3	A	203	2TA	CBF-NBE-SBD	-3.69	121.90	128.22
3	B	202	2TA	C5-C4-NAW	-3.63	114.24	119.44
3	B	202	2TA	CAS-CAR-CAQ	-3.18	96.31	105.10
3	A	203	2TA	C5-C4-N3	-3.03	119.92	123.46
3	A	203	2TA	CAS-CAR-CAQ	-2.97	96.89	105.10
3	B	202	2TA	C5-C4-N3	-2.88	120.11	123.46
3	A	203	2TA	C5-C4-NAW	-2.76	115.48	119.44
3	B	202	2TA	CBA-CAZ-CAY	-2.74	116.73	120.24
3	A	203	2TA	OBK-SBD-OBJ	2.72	122.83	119.52
3	A	203	2TA	CAI-CAH-CAG	2.62	123.31	120.30
3	A	203	2TA	CBC-CAX-NAW	2.54	128.98	120.33
3	A	203	2TA	C2-N3-C4	2.47	122.42	116.36
3	A	203	2TA	OBK-SBD-CBB	-2.47	104.87	107.98
3	B	202	2TA	CAZ-CAY-CAX	2.42	122.53	119.73
3	A	203	2TA	C5-C6-N1	-2.29	122.79	125.09
3	B	202	2TA	C6-N1-C2	2.29	118.95	115.81
3	B	202	2TA	C2-N3-C4	2.25	121.90	116.36
3	A	203	2TA	CAY-CAX-NAW	-2.23	113.06	120.61

Continued on next page...

Continued from previous page...

Mol	Chain	Res	Type	Atoms	Z	Observed(°)	Ideal(°)
3	A	203	2TA	CAH-CAG-CAL	-2.18	116.14	119.04
3	A	203	2TA	CAH-CAG-NAF	2.18	127.98	120.61
3	B	202	2TA	CAH-CAG-NAF	2.17	127.97	120.61
3	A	203	2TA	CAZ-CAY-CAX	2.12	122.17	119.73
3	B	202	2TA	CAZ-CBA-CBB	2.12	121.11	118.95
3	A	203	2TA	OBK-SBD-NBE	-2.10	102.56	107.36
3	A	203	2TA	NAF-C2-N3	2.06	123.99	116.90
3	A	203	2TA	CAX-NAW-C4	-2.02	124.47	129.43

There are no chirality outliers.

All (11) torsion outliers are listed below:

Mol	Chain	Res	Type	Atoms
3	A	203	2TA	CBA-CBB-SBD-NBE
3	A	203	2TA	CBC-CBB-SBD-NBE
3	A	203	2TA	CBA-CBB-SBD-OBK
3	A	203	2TA	CBC-CBB-SBD-OBK
3	B	202	2TA	CAI-CAJ-OAM-CAN
3	B	202	2TA	CAK-CAJ-OAM-CAN
3	B	202	2TA	CBA-CBB-SBD-OBK
3	B	202	2TA	CBC-CBB-SBD-OBK
3	A	203	2TA	OAM-CAN-CAO-NAP
3	B	202	2TA	CBA-CBB-SBD-NBE
3	B	202	2TA	CBC-CBB-SBD-NBE

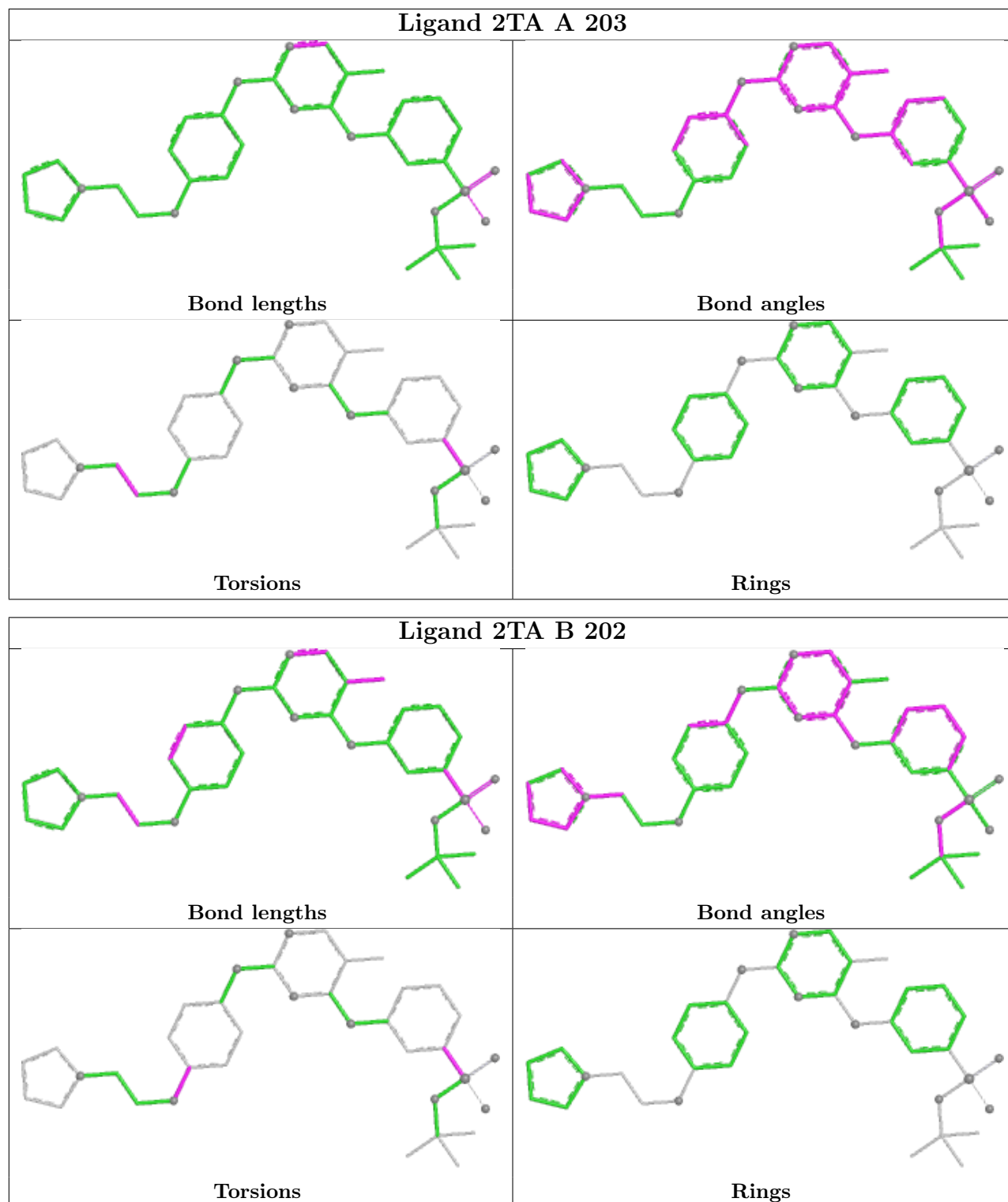
There are no ring outliers.

3 monomers are involved in 4 short contacts:

Mol	Chain	Res	Type	Clashes	Symm-Clashes
2	A	202	EDO	2	0
3	A	203	2TA	1	0
3	B	202	2TA	1	0

The following is a two-dimensional graphical depiction of Mogul quality analysis of bond lengths, bond angles, torsion angles, and ring geometry for all instances of the Ligand of Interest. In addition, ligands with molecular weight > 250 and outliers as shown on the validation Tables will also be included. For torsion angles, if less than 5% of the Mogul distribution of torsion angles is within 10 degrees of the torsion angle in question, then that torsion angle is considered an outlier. Any bond that is central to one or more torsion angles identified as an outlier by Mogul will be highlighted in the graph. For rings, the root-mean-square deviation (RMSD) between the ring in question and similar rings identified by Mogul is calculated over all ring torsion angles. If the average RMSD is greater than 60 degrees and the minimal RMSD between the ring in question and

any Mogul-identified rings is also greater than 60 degrees, then that ring is considered an outlier. The outliers are highlighted in purple. The color gray indicates Mogul did not find sufficient equivalents in the CSD to analyse the geometry.



5.7 Other polymers

There are no such residues in this entry.

5.8 Polymer linkage issues

There are no chain breaks in this entry.

6 Fit of model and data [i](#)

6.1 Protein, DNA and RNA chains [i](#)

In the following table, the column labelled ‘#RSRZ> 2’ contains the number (and percentage) of RSRZ outliers, followed by percent RSRZ outliers for the chain as percentile scores relative to all X-ray entries and entries of similar resolution. The OWAB column contains the minimum, median, 95th percentile and maximum values of the occupancy-weighted average B-factor per residue. The column labelled ‘Q< 0.9’ lists the number of (and percentage) of residues with an average occupancy less than 0.9.

Mol	Chain	Analysed	<RSRZ>	#RSRZ>2	OWAB(Å ²)	Q<0.9
1	A	127/127 (100%)	-0.41	1 (0%) 82 87	8, 14, 36, 59	8 (6%)
1	B	127/127 (100%)	-0.36	2 (1%) 70 75	6, 15, 35, 66	4 (3%)
All	All	254/254 (100%)	-0.39	3 (1%) 76 81	6, 15, 36, 66	12 (4%)

All (3) RSRZ outliers are listed below:

Mol	Chain	Res	Type	RSRZ
1	B	42	SER	3.6
1	B	168	GLU	2.8
1	A	53	PRO	2.5

6.2 Non-standard residues in protein, DNA, RNA chains [i](#)

There are no non-standard protein/DNA/RNA residues in this entry.

6.3 Carbohydrates [i](#)

There are no oligosaccharides in this entry.

6.4 Ligands [i](#)

In the following table, the Atoms column lists the number of modelled atoms in the group and the number defined in the chemical component dictionary. The B-factors column lists the minimum, median, 95th percentile and maximum values of B factors of atoms in the group. The column labelled ‘Q< 0.9’ lists the number of atoms with occupancy less than 0.9.

Mol	Type	Chain	Res	Atoms	RSCC	RSR	B-factors(Å ²)	Q<0.9
2	EDO	A	202	4/4	0.89	0.13	22,29,30,32	0
2	EDO	B	201	4/4	0.96	0.06	16,22,23,24	0

Continued on next page...

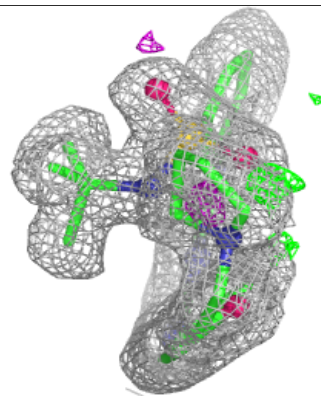
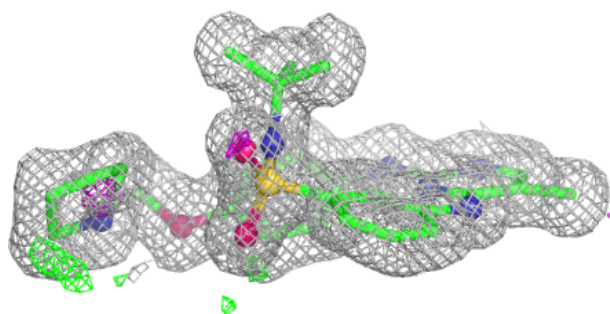
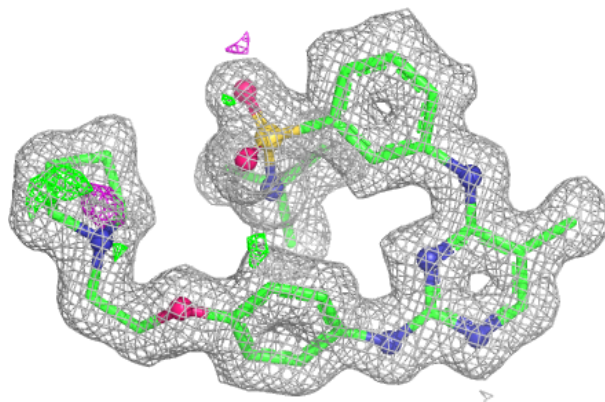
Continued from previous page...

Mol	Type	Chain	Res	Atoms	RSCC	RSR	B-factors(\AA^2)	Q<0.9
2	EDO	A	201	4/4	0.98	0.04	13,17,19,19	0
3	2TA	A	203	37/37	0.98	0.04	7,9,14,15	0
3	2TA	B	202	37/37	0.98	0.05	7,11,29,33	0

The following is a graphical depiction of the model fit to experimental electron density of all instances of the Ligand of Interest. In addition, ligands with molecular weight > 250 and outliers as shown on the geometry validation Tables will also be included. Each fit is shown from different orientation to approximate a three-dimensional view.

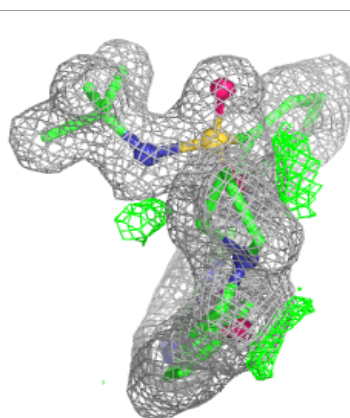
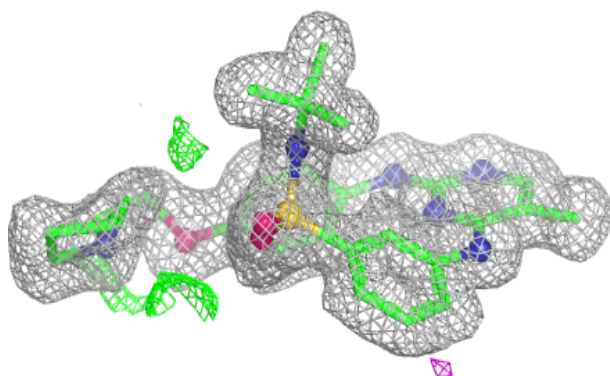
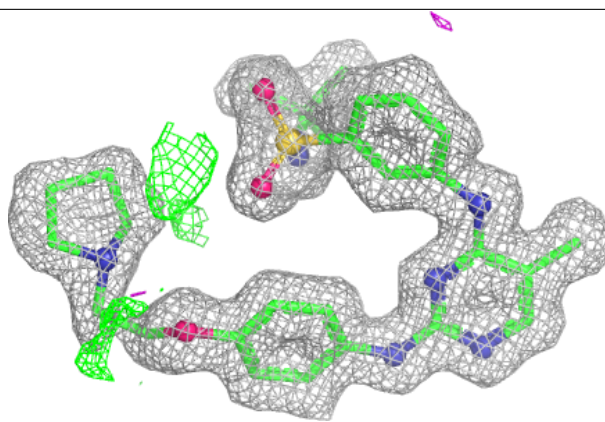
Electron density around 2TA A 203:

2mF_o-DF_c (at 0.7 rmsd) in gray
mF_o-DF_c (at 3 rmsd) in purple (negative)
and green (positive)



Electron density around 2TA B 202:

$2mF_o-DF_c$ (at 0.7 rmsd) in gray
 mF_o-DF_c (at 3 rmsd) in purple (negative)
and green (positive)



6.5 Other polymers [i](#)

There are no such residues in this entry.