



Full wwPDB X-ray Structure Validation Report ⓘ

Mar 6, 2026 – 11:57 PM UTC

PDB ID : 4PAE / pdb_00004pae
Title : Crystal structure of catalase-peroxidase (KatG) W78F mutant from *Synechococcus elongatus* PCC7942
Authors : Kamachi, S.; Wada, K.; Tada, T.
Deposited on : 2014-04-08
Resolution : 3.21 Å(reported)

This is a Full wwPDB X-ray Structure Validation Report for a publicly released PDB entry.

We welcome your comments at validation@mail.wwpdb.org

A user guide is available at

<https://www.wwpdb.org/validation/2017/XrayValidationReportHelp>

with specific help available everywhere you see the ⓘ symbol.

The types of validation reports are described at

<http://www.wwpdb.org/validation/2017/FAQs#types>.

The following versions of software and data (see [references ⓘ](#)) were used in the production of this report:

MolProbity	:	4-5-2 with Phenix2.0
Mogul	:	2022.3.0, CSD as543be (2022)
Xtriage (Phenix)	:	2.0
EDS	:	3.0
Buster-report	:	wwPDB partial adaption of 1.1.7 (2018)
Percentile statistics	:	20250101.v01 (using entries in the PDB archive January 1st 2025)
CCP4	:	9.0.010 (Gargrove)
Density-Fitness	:	1.0.12
Ideal geometry (proteins)	:	Engh & Huber (2001)
Ideal geometry (DNA, RNA)	:	Parkinson et al. (1996)
Validation Pipeline (wwPDB-VP)	:	2.49

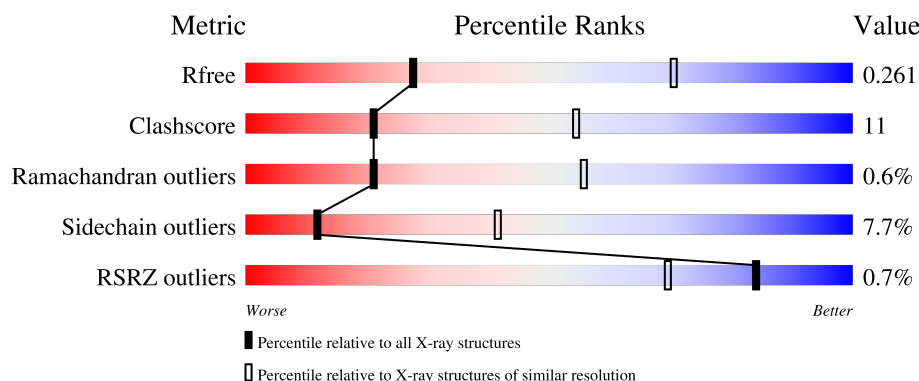
1 Overall quality at a glance

The following experimental techniques were used to determine the structure:

X-RAY DIFFRACTION

The reported resolution of this entry is 3.21 Å.

Percentile scores (ranging between 0-100) for global validation metrics of the entry are shown in the following graphic. The table shows the number of entries on which the scores are based.



Metric	Whole archive (#Entries)	Similar resolution (#Entries, resolution range(Å))
R_{free}	180053	1466 (3.20-3.20)
Clashscore	190562	1573 (3.20-3.20)
Ramachandran outliers	187476	1548 (3.20-3.20)
Sidechain outliers	187428	1547 (3.20-3.20)
RSRZ outliers	180081	1466 (3.20-3.20)

The table below summarises the geometric issues observed across the polymeric chains and their fit to the electron density. The red, orange, yellow and green segments of the lower bar indicate the fraction of residues that contain outliers for ≥ 3 , 2, 1 and 0 types of geometric quality criteria respectively. A grey segment represents the fraction of residues that are not modelled. The numeric value for each fraction is indicated below the corresponding segment, with a dot representing fractions $\leq 5\%$. The upper red bar (where present) indicates the fraction of residues that have poor fit to the electron density. The numeric value is given above the bar.

Mol	Chain	Length	Quality of chain
1	A	720	

The following table lists non-polymeric compounds, carbohydrate monomers and non-standard residues in protein, DNA, RNA chains that are outliers for geometric or electron-density-fit criteria:

Mol	Type	Chain	Res	Chirality	Geometry	Clashes	Electron density
2	HEB	A	801	X	-	-	-

2 Entry composition [i](#)

There are 5 unique types of molecules in this entry. The entry contains 5656 atoms, of which 0 are hydrogens and 0 are deuteriums.

In the tables below, the ZeroOcc column contains the number of atoms modelled with zero occupancy, the AltConf column contains the number of residues with at least one atom in alternate conformation and the Trace column contains the number of residues modelled with at most 2 atoms.

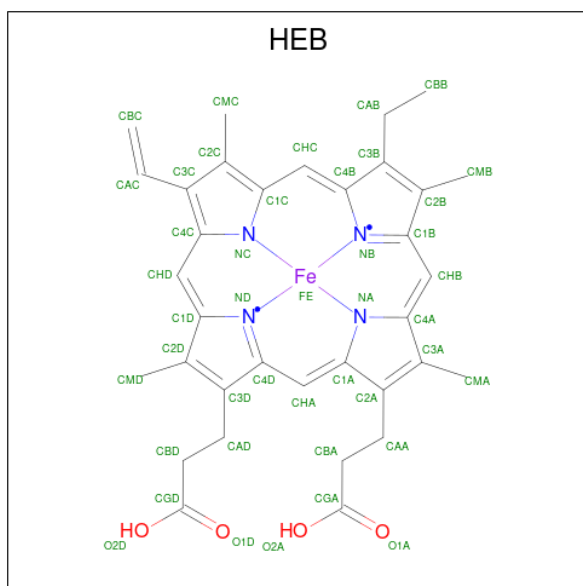
- Molecule 1 is a protein called Catalase-peroxidase.

Mol	Chain	Residues	Atoms					ZeroOcc	AltConf	Trace
1	A	707	Total	C	N	O	S	0	0	0
			5555	3506	976	1055	18			

There is a discrepancy between the modelled and reference sequences:

Chain	Residue	Modelled	Actual	Comment	Reference
A	78	PHE	TRP	engineered mutation	UNP Q31MN3

- Molecule 2 is HEME B/C (CCD ID: HEB) (formula: $C_{34}H_{34}FeN_4O_4$).

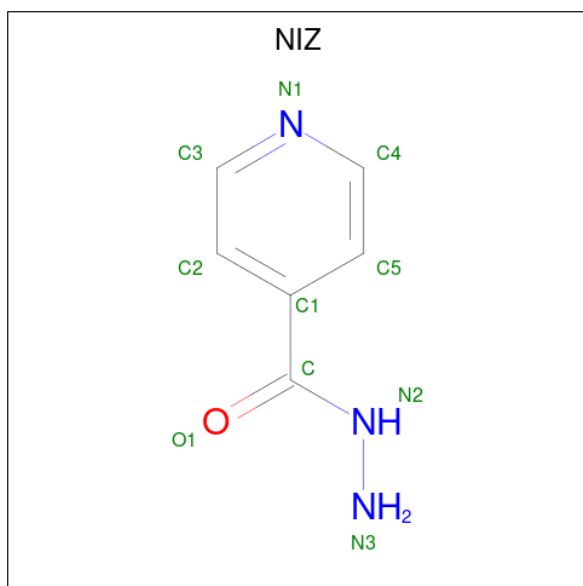


Mol	Chain	Residues	Atoms					ZeroOcc	AltConf
2	A	1	Total	C	Fe	N	O	0	0
			43	34	1	4	4		

- Molecule 3 is SODIUM ION (CCD ID: NA) (formula: Na).

Mol	Chain	Residues	Atoms		ZeroOcc	AltConf
3	A	2	Total	Na	0	0
			2	2		

- Molecule 4 is pyridine-4-carbohydrazide (CCD ID: NIZ) (formula: C₆H₇N₃O).



Mol	Chain	Residues	Atoms				ZeroOcc	AltConf
4	A	1	Total	C	N	O	0	0
			10	6	3	1		

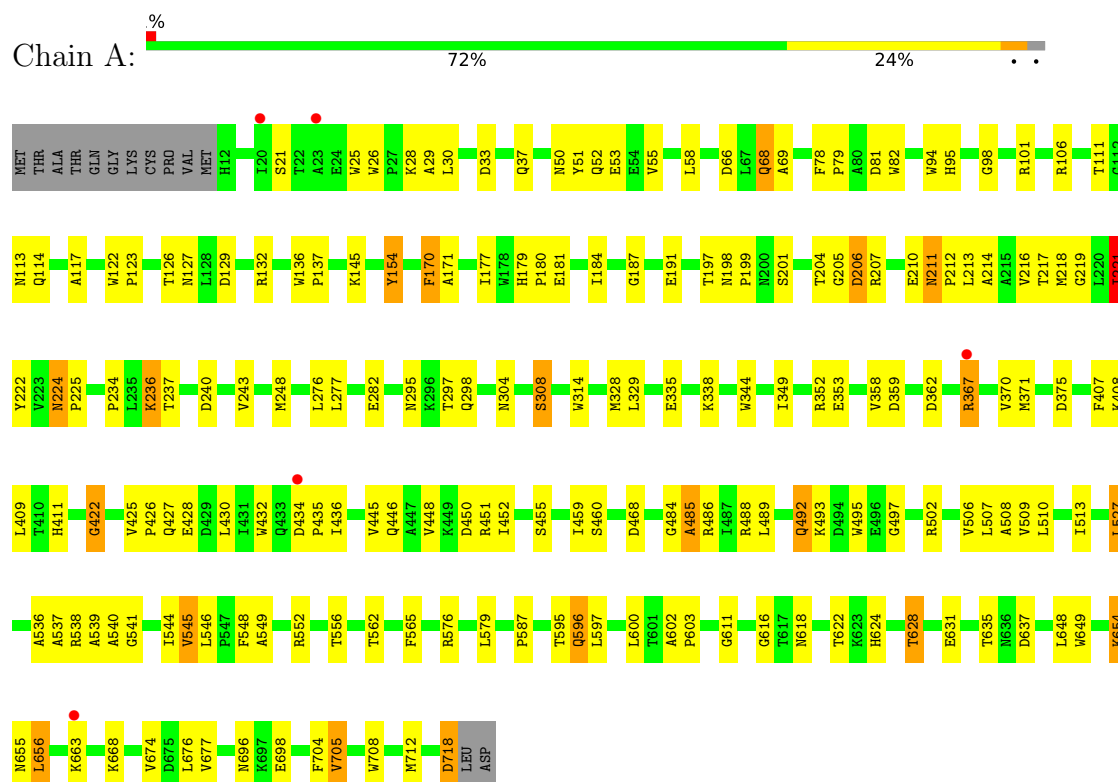
- Molecule 5 is water.

Mol	Chain	Residues	Atoms		ZeroOcc	AltConf
5	A	46	Total	O	0	0
			46	46		

3 Residue-property plots

These plots are drawn for all protein, RNA, DNA and oligosaccharide chains in the entry. The first graphic for a chain summarises the proportions of the various outlier classes displayed in the second graphic. The second graphic shows the sequence view annotated by issues in geometry and electron density. Residues are color-coded according to the number of geometric quality criteria for which they contain at least one outlier: green = 0, yellow = 1, orange = 2 and red = 3 or more. A red dot above a residue indicates a poor fit to the electron density ($RSRZ > 2$). Stretches of 2 or more consecutive residues without any outlier are shown as a green connector. Residues present in the sample, but not in the model, are shown in grey.

• Molecule 1: Catalase-peroxidase



4 Data and refinement statistics

Property	Value	Source
Space group	P 41 21 2	Depositor
Cell constants a, b, c, α , β , γ	107.67Å 107.67Å 204.79Å 90.00° 90.00° 90.00°	Depositor
Resolution (Å)	42.27 – 3.21 42.27 – 3.21	Depositor EDS
% Data completeness (in resolution range)	99.5 (42.27-3.21) 99.5 (42.27-3.21)	Depositor EDS
R_{merge}	(Not available)	Depositor
R_{sym}	0.15	Depositor
$\langle I/\sigma(I) \rangle$ ¹	3.02 (at 3.19Å)	Xtriage
Refinement program	REFMAC 5.7.0032	Depositor
R, R_{free}	0.180 , 0.260 0.189 , 0.261	Depositor DCC
R_{free} test set	1046 reflections (5.11%)	wwPDB-VP
Wilson B-factor (Å ²)	69.9	Xtriage
Anisotropy	0.072	Xtriage
Bulk solvent k_{sol} (e/Å ³), B_{sol} (Å ²)	0.40 , 72.8	EDS
L-test for twinning ²	$\langle L \rangle = 0.50$, $\langle L^2 \rangle = 0.33$	Xtriage
Estimated twinning fraction	No twinning to report.	Xtriage
F_o, F_c correlation	0.94	EDS
Total number of atoms	5656	wwPDB-VP
Average B, all atoms (Å ²)	73.0	wwPDB-VP

Xtriage's analysis on translational NCS is as follows: *The largest off-origin peak in the Patterson function is 3.29% of the height of the origin peak. No significant pseudotranslation is detected.*

¹Intensities estimated from amplitudes.

²Theoretical values of $\langle |L| \rangle$, $\langle L^2 \rangle$ for acentric reflections are 0.5, 0.333 respectively for untwinned datasets, and 0.375, 0.2 for perfectly twinned datasets.

5 Model quality

5.1 Standard geometry

Bond lengths and bond angles in the following residue types are not validated in this section: NIZ, NA, HEB

The Z score for a bond length (or angle) is the number of standard deviations the observed value is removed from the expected value. A bond length (or angle) with $|Z| > 5$ is considered an outlier worth inspection. RMSZ is the root-mean-square of all Z scores of the bond lengths (or angles).

Mol	Chain	Bond lengths		Bond angles	
		RMSZ	$\# Z > 5$	RMSZ	$\# Z > 5$
1	A	0.76	1/5701 (0.0%)	1.04	17/7764 (0.2%)

All (1) bond length outliers are listed below:

Mol	Chain	Res	Type	Atoms	Z	Observed(Å)	Ideal(Å)
1	A	211	ASN	C-N	5.13	1.37	1.33

All (17) bond angle outliers are listed below:

Mol	Chain	Res	Type	Atoms	Z	Observed(°)	Ideal(°)
1	A	654	LYS	N-CA-C	12.26	136.92	110.80
1	A	78	PHE	CA-C-N	8.32	130.24	119.84
1	A	78	PHE	C-N-CA	8.32	130.24	119.84
1	A	29	ALA	CB-CA-C	-8.02	98.56	109.71
1	A	170	PHE	CB-CA-C	6.94	120.89	109.72
1	A	30	LEU	N-CA-C	6.87	120.44	110.42
1	A	206	ASP	N-CA-C	-6.29	102.12	111.81
1	A	29	ALA	N-CA-C	6.04	119.23	110.42
1	A	422	GLY	CA-C-N	5.54	125.15	119.56
1	A	422	GLY	C-N-CA	5.54	125.15	119.56
1	A	236	LYS	N-CA-C	-5.35	104.34	111.24
1	A	696	ASN	N-CA-C	5.33	118.91	111.56
1	A	205	GLY	N-CA-C	5.12	125.30	113.18
1	A	221	ILE	CB-CA-C	5.07	119.61	111.29
1	A	207	ARG	N-CA-C	-5.06	106.41	112.58
1	A	224	ASN	CA-C-N	5.01	124.70	119.64
1	A	224	ASN	C-N-CA	5.01	124.70	119.64

There are no chirality outliers.

There are no planarity outliers.

5.2 Too-close contacts ⓘ

In the following table, the Non-H and H(model) columns list the number of non-hydrogen atoms and hydrogen atoms in the chain respectively. The H(added) column lists the number of hydrogen atoms added and optimized by MolProbity. The Clashes column lists the number of clashes within the asymmetric unit, whereas Symm-Clashes lists symmetry-related clashes.

Mol	Chain	Non-H	H(model)	H(added)	Clashes	Symm-Clashes
1	A	5555	0	5340	117	0
2	A	43	0	32	5	0
3	A	2	0	0	0	0
4	A	10	0	7	1	0
5	A	46	0	0	5	0
All	All	5656	0	5379	121	0

The all-atom clashscore is defined as the number of clashes found per 1000 atoms (including hydrogen atoms). The all-atom clashscore for this structure is 11.

All (121) close contacts within the same asymmetric unit are listed below, sorted by their clash magnitude.

Atom-1	Atom-2	Interatomic distance (Å)	Clash overlap (Å)
1:A:94:TRP:CH2	1:A:222:TYR:CE1	2.51	0.98
1:A:221:ILE:HG23	1:A:222:TYR:HD1	1.37	0.86
1:A:618:ASN:HB2	5:A:944:HOH:O	1.78	0.83
1:A:222:TYR:CZ	1:A:248:MET:SD	2.73	0.82
1:A:509:VAL:HG12	1:A:513:ILE:HD11	1.68	0.76
1:A:222:TYR:CD2	1:A:248:MET:HE3	2.21	0.75
1:A:123:PRO:O	1:A:126:THR:OG1	2.05	0.72
1:A:434:ASP:OD1	1:A:565:PHE:CZ	2.43	0.70
1:A:222:TYR:CE2	1:A:248:MET:SD	2.84	0.70
1:A:94:TRP:HH2	1:A:222:TYR:CE1	2.10	0.69
1:A:221:ILE:HG23	1:A:222:TYR:CD1	2.26	0.69
1:A:94:TRP:CH2	1:A:222:TYR:CZ	2.85	0.65
1:A:492:GLN:HG3	1:A:495:TRP:CZ3	2.34	0.62
1:A:618:ASN:HD22	1:A:622:THR:HG23	1.64	0.62
1:A:509:VAL:HG12	1:A:513:ILE:CD1	2.30	0.62
1:A:538:ARG:O	1:A:541:GLY:N	2.33	0.62
1:A:94:TRP:HH2	1:A:222:TYR:CZ	2.18	0.62
1:A:452:ILE:O	1:A:455:SER:OG	2.18	0.61
1:A:628:THR:HG21	5:A:945:HOH:O	2.00	0.59
1:A:616:GLY:HA2	5:A:944:HOH:O	2.01	0.59
1:A:546:LEU:HD21	1:A:705:VAL:HG22	1.83	0.59
1:A:451:ARG:HD2	1:A:513:ILE:HG23	1.83	0.59

Continued on next page...

Continued from previous page...

Atom-1	Atom-2	Interatomic distance (Å)	Clash overlap (Å)
1:A:94:TRP:CD1	1:A:95:HIS:HD2	2.21	0.59
1:A:502:ARG:O	1:A:506:VAL:HG23	2.04	0.57
1:A:122:TRP:CD2	1:A:219:GLY:HA2	2.42	0.54
1:A:434:ASP:OD1	1:A:565:PHE:CE1	2.60	0.54
1:A:708:TRP:CZ2	1:A:712:MET:HE3	2.42	0.54
1:A:509:VAL:CG1	1:A:513:ILE:HD11	2.38	0.53
2:A:801:HEB:HHC	2:A:801:HEB:HBB3	1.91	0.53
1:A:468:ASP:OD2	1:A:576:ARG:NH1	2.42	0.53
1:A:329:LEU:HD13	1:A:371:MET:SD	2.50	0.52
1:A:98:GLY:O	1:A:248:MET:SD	2.68	0.52
1:A:674:VAL:O	1:A:677:VAL:HG12	2.10	0.52
1:A:210:GLU:C	1:A:212:PRO:HD2	2.35	0.52
1:A:171:ALA:H	1:A:411:HIS:HE1	1.58	0.52
1:A:314:TRP:NE1	1:A:375:ASP:OD2	2.42	0.52
1:A:434:ASP:N	1:A:435:PRO:HD3	2.24	0.51
1:A:81:ASP:H	4:A:804:NIZ:C4	2.23	0.51
1:A:51:TYR:O	1:A:52:GLN:C	2.54	0.51
1:A:510:LEU:HA	1:A:513:ILE:HD12	1.93	0.50
1:A:624:HIS:CE1	1:A:656:LEU:HD11	2.46	0.50
1:A:224:ASN:OD1	1:A:225:PRO:HD2	2.12	0.50
2:A:801:HEB:HBC1	2:A:801:HEB:HMC3	1.92	0.50
1:A:94:TRP:CD1	1:A:95:HIS:CD2	3.00	0.50
1:A:579:LEU:HD11	1:A:587:PRO:HB3	1.94	0.49
1:A:648:LEU:C	1:A:648:LEU:HD12	2.37	0.49
1:A:117:ALA:HB2	1:A:282:GLU:HG3	1.94	0.49
1:A:549:ALA:O	1:A:552:ARG:NH1	2.46	0.49
1:A:635:THR:O	5:A:946:HOH:O	2.18	0.49
1:A:407:PHE:O	1:A:411:HIS:HD2	1.95	0.49
1:A:359:ASP:HB2	1:A:367:ARG:HE	1.77	0.49
1:A:154:TYR:CD1	1:A:170:PHE:CD2	3.00	0.49
1:A:106:ARG:HD3	1:A:184:ILE:HG12	1.93	0.48
1:A:214:ALA:HB1	1:A:248:MET:HE2	1.95	0.48
1:A:328:MET:HA	1:A:328:MET:HE2	1.95	0.48
1:A:179:HIS:C	1:A:179:HIS:CD2	2.91	0.48
1:A:611:GLY:HA3	1:A:704:PHE:CE2	2.49	0.48
1:A:544:ILE:HD12	1:A:545:VAL:H	1.78	0.48
1:A:154:TYR:CE1	1:A:170:PHE:CD2	3.02	0.48
1:A:654:LYS:O	1:A:655:ASN:HB3	2.13	0.48
1:A:527:LEU:HD22	1:A:548:PHE:CZ	2.49	0.48
1:A:596:GLN:HG3	1:A:597:LEU:N	2.29	0.48
1:A:434:ASP:OD1	1:A:565:PHE:HZ	1.91	0.47

Continued on next page...

Continued from previous page...

Atom-1	Atom-2	Interatomic distance (Å)	Clash overlap (Å)
1:A:595:THR:HG23	1:A:600:LEU:HB2	1.96	0.47
1:A:338:LYS:HD3	1:A:344:TRP:CZ3	2.50	0.47
1:A:485:ALA:HB3	1:A:488:ARG:NH1	2.29	0.47
1:A:446:GLN:NE2	1:A:446:GLN:O	2.48	0.47
1:A:649:TRP:CE3	1:A:676:LEU:HD13	2.49	0.47
1:A:427:GLN:HE21	1:A:428:GLU:H	1.62	0.47
2:A:801:HEB:HBC1	2:A:801:HEB:CMC	2.46	0.46
1:A:335:GLU:HG2	1:A:349:ILE:HG12	1.98	0.46
1:A:216:VAL:HG11	1:A:240:ASP:OD2	2.15	0.46
1:A:136:TRP:N	1:A:137:PRO:HD2	2.31	0.46
1:A:37:GLN:HE22	1:A:181:GLU:HA	1.81	0.46
1:A:435:PRO:O	1:A:486:ARG:NH2	2.48	0.46
1:A:488:ARG:HG3	1:A:489:LEU:HD12	1.97	0.46
1:A:488:ARG:O	1:A:493:LYS:HD3	2.16	0.45
1:A:602:ALA:HB3	1:A:603:PRO:HD3	1.99	0.45
1:A:222:TYR:CD2	1:A:248:MET:CE	2.97	0.45
1:A:407:PHE:O	1:A:411:HIS:CD2	2.70	0.45
1:A:127:ASN:HA	1:A:129:ASP:OD1	2.18	0.44
1:A:492:GLN:HG3	1:A:495:TRP:CE3	2.52	0.44
1:A:459:ILE:HD13	1:A:536:ALA:HB2	2.00	0.44
1:A:171:ALA:H	1:A:411:HIS:CE1	2.35	0.43
1:A:25:TRP:HB2	1:A:26:TRP:CE3	2.54	0.43
1:A:179:HIS:HB2	1:A:180:PRO:CD	2.48	0.43
1:A:211:ASN:N	1:A:212:PRO:CD	2.82	0.43
1:A:628:THR:HG22	1:A:637:ASP:OD2	2.19	0.43
1:A:427:GLN:NE2	1:A:428:GLU:H	2.17	0.42
1:A:236:LYS:O	1:A:237:THR:C	2.62	0.42
1:A:507:LEU:O	1:A:508:ALA:C	2.62	0.42
1:A:198:ASN:O	1:A:199:PRO:C	2.62	0.42
1:A:308:SER:OG	2:A:801:HEB:HAA2	2.20	0.42
1:A:359:ASP:HB3	1:A:362:ASP:O	2.19	0.42
1:A:422:GLY:O	1:A:425:VAL:HG23	2.20	0.42
1:A:66:ASP:O	1:A:69:ALA:HB3	2.19	0.42
1:A:224:ASN:OD1	1:A:225:PRO:CD	2.67	0.42
1:A:408:LYS:HA	1:A:432:TRP:CH2	2.55	0.42
1:A:434:ASP:CG	1:A:565:PHE:CZ	2.98	0.42
1:A:718:ASP:OD1	1:A:718:ASP:N	2.52	0.42
1:A:55:VAL:HG23	1:A:145:LYS:O	2.19	0.42
1:A:277:LEU:HD23	1:A:295:ASN:HB2	2.02	0.42
1:A:114:GLN:HG2	1:A:132:ARG:NH1	2.35	0.41
1:A:704:PHE:CD1	1:A:704:PHE:C	2.98	0.41

Continued on next page...

Continued from previous page...

Atom-1	Atom-2	Interatomic distance (Å)	Clash overlap (Å)
1:A:435:PRO:C	1:A:436:ILE:HG13	2.45	0.41
1:A:68:GLN:HE21	1:A:68:GLN:HB2	1.71	0.41
1:A:50:ASN:HD22	1:A:53:GLU:HG2	1.86	0.41
1:A:55:VAL:O	1:A:58:LEU:HB3	2.19	0.41
1:A:222:TYR:CE2	1:A:248:MET:HE3	2.55	0.41
1:A:537:ALA:O	1:A:540:ALA:HB3	2.21	0.41
1:A:488:ARG:CG	1:A:489:LEU:HD12	2.51	0.41
1:A:81:ASP:HB3	1:A:82:TRP:CE3	2.56	0.41
1:A:177:ILE:HD12	1:A:179:HIS:O	2.20	0.41
1:A:445:VAL:HG13	1:A:527:LEU:HD21	2.03	0.41
1:A:154:TYR:CD1	1:A:170:PHE:CE2	3.09	0.41
1:A:497:GLY:O	5:A:943:HOH:O	2.22	0.41
2:A:801:HEB:HHA	2:A:801:HEB:HAD2	1.83	0.40
1:A:187:GLY:O	1:A:218:MET:HE1	2.22	0.40
1:A:408:LYS:O	1:A:409:LEU:C	2.65	0.40
1:A:484:GLY:O	1:A:485:ALA:C	2.64	0.40
1:A:297:THR:HG22	1:A:298:GLN:HG2	2.04	0.40

There are no symmetry-related clashes.

5.3 Torsion angles ⓘ

5.3.1 Protein backbone ⓘ

In the following table, the Percentiles column shows the percent Ramachandran outliers of the chain as a percentile score with respect to all X-ray entries followed by that with respect to entries of similar resolution.

The Analysed column shows the number of residues for which the backbone conformation was analysed, and the total number of residues.

Mol	Chain	Analysed	Favoured	Allowed	Outliers	Percentiles	
1	A	705/720 (98%)	627 (89%)	74 (10%)	4 (1%)	21	56

All (4) Ramachandran outliers are listed below:

Mol	Chain	Res	Type
1	A	539	ALA
1	A	485	ALA
1	A	426	PRO
1	A	113	ASN

5.3.2 Protein sidechains ⓘ

In the following table, the Percentiles column shows the percent sidechain outliers of the chain as a percentile score with respect to all X-ray entries followed by that with respect to entries of similar resolution.

The Analysed column shows the number of residues for which the sidechain conformation was analysed, and the total number of residues.

Mol	Chain	Analysed	Rotameric	Outliers	Percentiles	
1	A	570/581 (98%)	526 (92%)	44 (8%)	12	41

All (44) residues with a non-rotameric sidechain are listed below:

Mol	Chain	Res	Type
1	A	21	SER
1	A	28	LYS
1	A	33	ASP
1	A	68	GLN
1	A	79	PRO
1	A	101	ARG
1	A	111	THR
1	A	154	TYR
1	A	191	GLU
1	A	197	THR
1	A	201	SER
1	A	204	THR
1	A	206	ASP
1	A	213	LEU
1	A	217	THR
1	A	221	ILE
1	A	234	PRO
1	A	243	VAL
1	A	276	LEU
1	A	304	ASN
1	A	308	SER
1	A	352	ARG
1	A	353	GLU
1	A	358	VAL
1	A	367	ARG
1	A	370	VAL
1	A	430	LEU
1	A	448	VAL
1	A	450	ASP
1	A	460	SER

Continued on next page...

Continued from previous page...

Mol	Chain	Res	Type
1	A	492	GLN
1	A	527	LEU
1	A	545	VAL
1	A	556	THR
1	A	562	THR
1	A	596	GLN
1	A	628	THR
1	A	631	GLU
1	A	656	LEU
1	A	663	LYS
1	A	668	LYS
1	A	698	GLU
1	A	705	VAL
1	A	718	ASP

Sometimes sidechains can be flipped to improve hydrogen bonding and reduce clashes. All (25) such sidechains are listed below:

Mol	Chain	Res	Type
1	A	37	GLN
1	A	38	HIS
1	A	43	ASN
1	A	50	ASN
1	A	65	GLN
1	A	68	GLN
1	A	95	HIS
1	A	125	ASN
1	A	179	HIS
1	A	271	ASN
1	A	273	ASN
1	A	320	GLN
1	A	350	ASN
1	A	368	ASN
1	A	393	GLN
1	A	411	HIS
1	A	427	GLN
1	A	440	ASN
1	A	492	GLN
1	A	535	GLN
1	A	572	HIS
1	A	618	ASN
1	A	619	HIS
1	A	666	GLN

Continued on next page...

Continued from previous page...

Mol	Chain	Res	Type
1	A	693	GLN

5.3.3 RNA ⓘ

There are no RNA molecules in this entry.

5.4 Non-standard residues in protein, DNA, RNA chains ⓘ

There are no non-standard protein/DNA/RNA residues in this entry.

5.5 Carbohydrates ⓘ

There are no oligosaccharides in this entry.

5.6 Ligand geometry ⓘ

Of 4 ligands modelled in this entry, 2 are monoatomic - leaving 2 for Mogul analysis.

In the following table, the Counts columns list the number of bonds (or angles) for which Mogul statistics could be retrieved, the number of bonds (or angles) that are observed in the model and the number of bonds (or angles) that are defined in the Chemical Component Dictionary. The Link column lists molecule types, if any, to which the group is linked. The Z score for a bond length (or angle) is the number of standard deviations the observed value is removed from the expected value. A bond length (or angle) with $|Z| > 2$ is considered an outlier worth inspection. RMSZ is the root-mean-square of all Z scores of the bond lengths (or angles).

Mol	Type	Chain	Res	Link	Bond lengths			Bond angles		
					Counts	RMSZ	$\# Z > 2$	Counts	RMSZ	$\# Z > 2$
2	HEB	A	801	1	50,50,50	1.96	13 (26%)	66,82,82	2.20	19 (28%)
4	NIZ	A	804	-	10,10,10	0.70	0	12,12,12	2.04	5 (41%)

In the following table, the Chirals column lists the number of chiral outliers, the number of chiral centers analysed, the number of these observed in the model and the number defined in the Chemical Component Dictionary. Similar counts are reported in the Torsion and Rings columns. '-' means no outliers of that kind were identified.

Mol	Type	Chain	Res	Link	Chirals	Torsions	Rings
2	HEB	A	801	1	1/1/3/8	8/14/54/54	-
4	NIZ	A	804	-	-	0/6/6/6	0/1/1/1

All (13) bond length outliers are listed below:

Mol	Chain	Res	Type	Atoms	Z	Observed(Å)	Ideal(Å)
2	A	801	HEB	C4B-NB	-5.63	1.30	1.40
2	A	801	HEB	C1D-ND	-4.77	1.32	1.40
2	A	801	HEB	CBB-CAB	-4.49	1.32	1.51
2	A	801	HEB	FE-NB	3.74	2.06	1.94
2	A	801	HEB	C1A-C2A	-3.36	1.39	1.45
2	A	801	HEB	C1C-NC	-3.17	1.33	1.39
2	A	801	HEB	FE-NC	2.97	2.04	1.95
2	A	801	HEB	C4D-ND	-2.81	1.33	1.38
2	A	801	HEB	C1B-NB	-2.67	1.33	1.38
2	A	801	HEB	C4C-NC	-2.19	1.35	1.39
2	A	801	HEB	O1D-CGD	2.13	1.29	1.22
2	A	801	HEB	C4B-C3B	2.08	1.48	1.45
2	A	801	HEB	FE-ND	-2.04	1.88	1.94

All (24) bond angle outliers are listed below:

Mol	Chain	Res	Type	Atoms	Z	Observed(°)	Ideal(°)
2	A	801	HEB	CAB-C3B-C4B	5.58	132.05	124.79
2	A	801	HEB	CHA-C4D-C3D	-5.43	116.86	124.77
2	A	801	HEB	CHB-C1B-NB	5.40	130.23	124.42
2	A	801	HEB	C4B-NB-C1B	5.31	111.49	105.21
2	A	801	HEB	CHA-C4D-ND	4.80	129.59	124.42
2	A	801	HEB	CAD-C3D-C2D	3.78	134.94	127.87
2	A	801	HEB	O2A-CGA-O1A	-3.70	113.81	123.33
2	A	801	HEB	O2A-CGA-CBA	3.68	125.62	114.00
4	A	804	NIZ	O1-C-N2	-3.59	118.15	122.46
4	A	804	NIZ	C1-C-N2	3.41	120.12	116.33
2	A	801	HEB	CBB-CAB-C3B	3.26	121.25	112.42
2	A	801	HEB	C3B-C4B-NB	-3.25	106.60	110.17
2	A	801	HEB	C3D-C4D-ND	3.25	113.49	110.35
2	A	801	HEB	CAB-C3B-C2B	-3.20	121.68	127.56
4	A	804	NIZ	C3-C2-C1	2.90	122.22	119.05
2	A	801	HEB	C2A-C1A-NA	2.78	113.01	110.32
2	A	801	HEB	CHB-C1B-C2B	-2.72	120.74	125.03
2	A	801	HEB	CAD-CBD-CGD	-2.60	106.77	113.67
2	A	801	HEB	CHC-C4B-NB	2.57	127.54	124.37
4	A	804	NIZ	C2-C3-N1	-2.47	119.38	123.60
2	A	801	HEB	CBD-CAD-C3D	2.45	119.31	112.53
2	A	801	HEB	C4C-NC-C1C	2.36	109.68	105.82
2	A	801	HEB	CAD-C3D-C4D	-2.23	120.81	124.70
4	A	804	NIZ	C5-C1-C2	-2.08	115.92	118.57

All (1) chirality outliers are listed below:

Mol	Chain	Res	Type	Atom
2	A	801	HEB	NA

All (8) torsion outliers are listed below:

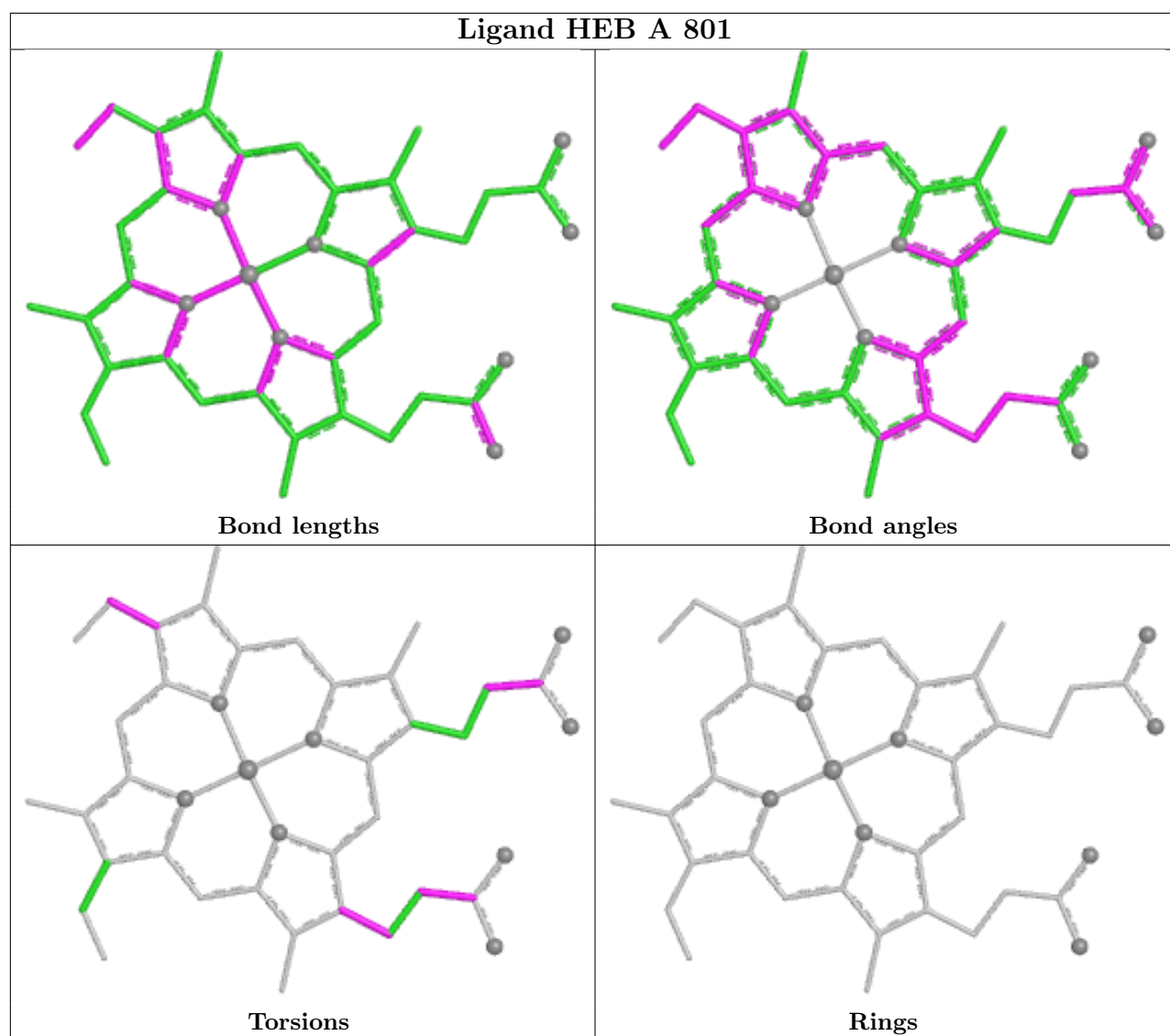
Mol	Chain	Res	Type	Atoms
2	A	801	HEB	C4B-C3B-CAB-CBB
2	A	801	HEB	C2D-C3D-CAD-CBD
2	A	801	HEB	C2B-C3B-CAB-CBB
2	A	801	HEB	C4D-C3D-CAD-CBD
2	A	801	HEB	CAD-CBD-CGD-O1D
2	A	801	HEB	CAD-CBD-CGD-O2D
2	A	801	HEB	CAA-CBA-CGA-O2A
2	A	801	HEB	CAA-CBA-CGA-O1A

There are no ring outliers.

2 monomers are involved in 6 short contacts:

Mol	Chain	Res	Type	Clashes	Symm-Clashes
2	A	801	HEB	5	0
4	A	804	NIZ	1	0

The following is a two-dimensional graphical depiction of Mogul quality analysis of bond lengths, bond angles, torsion angles, and ring geometry for all instances of the Ligand of Interest. In addition, ligands with molecular weight > 250 and outliers as shown on the validation Tables will also be included. For torsion angles, if less than 5% of the Mogul distribution of torsion angles is within 10 degrees of the torsion angle in question, then that torsion angle is considered an outlier. Any bond that is central to one or more torsion angles identified as an outlier by Mogul will be highlighted in the graph. For rings, the root-mean-square deviation (RMSD) between the ring in question and similar rings identified by Mogul is calculated over all ring torsion angles. If the average RMSD is greater than 60 degrees and the minimal RMSD between the ring in question and any Mogul-identified rings is also greater than 60 degrees, then that ring is considered an outlier. The outliers are highlighted in purple. The color gray indicates Mogul did not find sufficient equivalents in the CSD to analyse the geometry.



5.7 Other polymers [i](#)

There are no such residues in this entry.

5.8 Polymer linkage issues [i](#)

There are no chain breaks in this entry.

6 Fit of model and data [i](#)

6.1 Protein, DNA and RNA chains [i](#)

In the following table, the column labelled ‘#RSRZ> 2’ contains the number (and percentage) of RSRZ outliers, followed by percent RSRZ outliers for the chain as percentile scores relative to all X-ray entries and entries of similar resolution. The OWAB column contains the minimum, median, 95th percentile and maximum values of the occupancy-weighted average B-factor per residue. The column labelled ‘Q< 0.9’ lists the number of (and percentage) of residues with an average occupancy less than 0.9.

Mol	Chain	Analysed	<RSRZ>	#RSRZ>2	OWAB(Å ²)	Q<0.9
1	A	707/720 (98%)	-0.15	5 (0%) 84 69	44, 70, 108, 168	0

All (5) RSRZ outliers are listed below:

Mol	Chain	Res	Type	RSRZ
1	A	367	ARG	4.6
1	A	434	ASP	4.0
1	A	20	ILE	2.9
1	A	23	ALA	2.3
1	A	663	LYS	2.1

6.2 Non-standard residues in protein, DNA, RNA chains [i](#)

There are no non-standard protein/DNA/RNA residues in this entry.

6.3 Carbohydrates [i](#)

There are no oligosaccharides in this entry.

6.4 Ligands [i](#)

In the following table, the Atoms column lists the number of modelled atoms in the group and the number defined in the chemical component dictionary. The B-factors column lists the minimum, median, 95th percentile and maximum values of B factors of atoms in the group. The column labelled ‘Q< 0.9’ lists the number of atoms with occupancy less than 0.9.

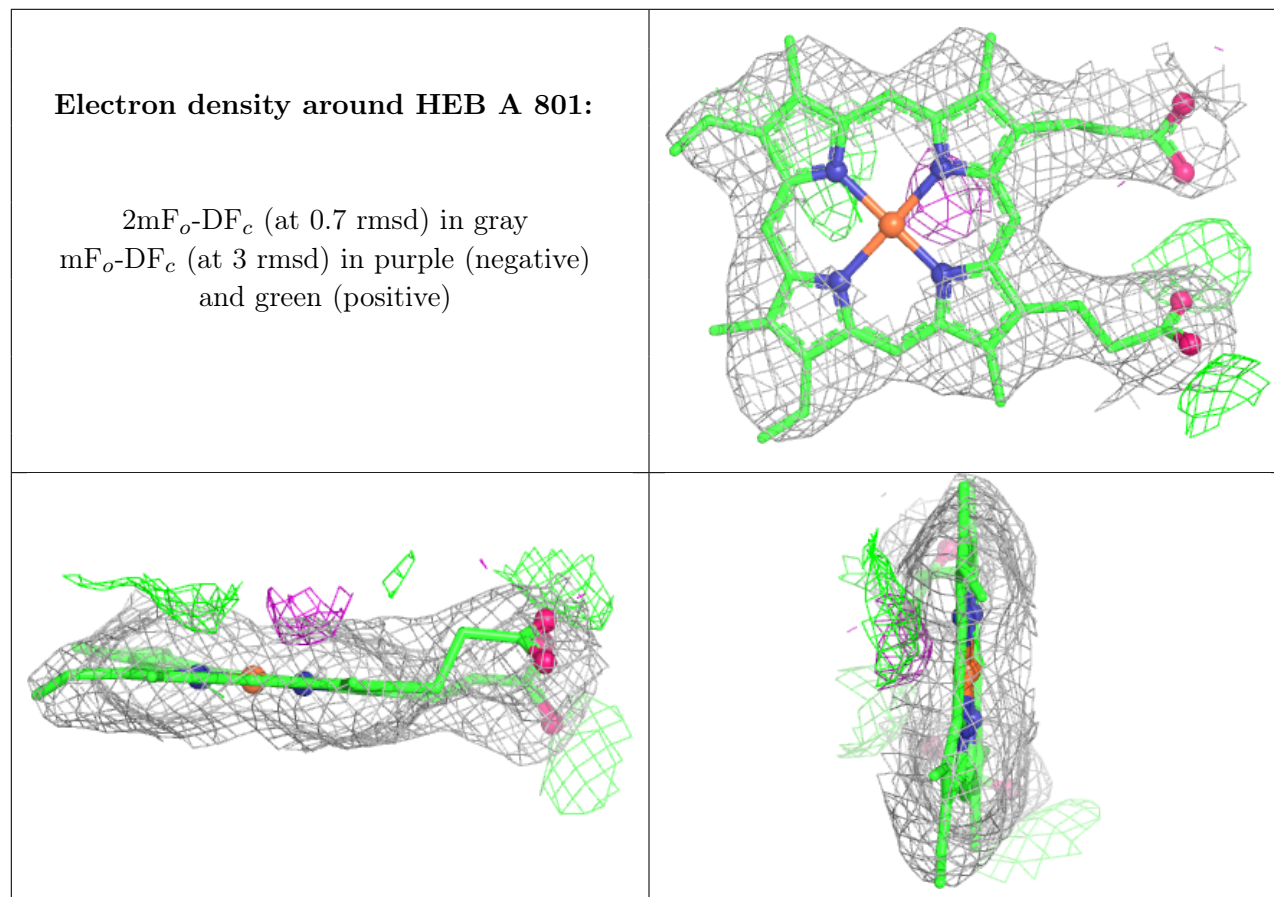
Mol	Type	Chain	Res	Atoms	RSCC	RSR	B-factors(Å ²)	Q<0.9
3	NA	A	802	1/1	0.80	0.12	41,41,41,41	0
3	NA	A	803	1/1	0.92	0.09	57,57,57,57	0

Continued on next page...

Continued from previous page...

Mol	Type	Chain	Res	Atoms	RSCC	RSR	B-factors(\AA^2)	Q<0.9
4	NIZ	A	804	10/10	0.94	0.11	56,67,80,89	0
2	HEB	A	801	43/43	0.98	0.07	47,55,61,70	0

The following is a graphical depiction of the model fit to experimental electron density of all instances of the Ligand of Interest. In addition, ligands with molecular weight > 250 and outliers as shown on the geometry validation Tables will also be included. Each fit is shown from different orientation to approximate a three-dimensional view.



6.5 Other polymers ⓘ

There are no such residues in this entry.