



Full wwPDB X-ray Structure Validation Report ⓘ

Mar 8, 2026 – 03:38 PM UTC

PDB ID : 4Q3T / pdb_00004q3t
Title : Crystal structure of Schistosoma mansoni arginase in complex with inhibitor NOHA
Authors : Hai, Y.; Edwards, J.E.; Van Zandt, M.C.; Hoffmann, K.F.; Christianson, D.W.
Deposited on : 2014-04-12
Resolution : 2.14 Å(reported)

This is a Full wwPDB X-ray Structure Validation Report for a publicly released PDB entry.

We welcome your comments at validation@mail.wwpdb.org

A user guide is available at

<https://www.wwpdb.org/validation/2017/XrayValidationReportHelp>

with specific help available everywhere you see the ⓘ symbol.

The types of validation reports are described at

<http://www.wwpdb.org/validation/2017/FAQs#types>.

The following versions of software and data (see [references ⓘ](#)) were used in the production of this report:

MolProbity	:	4-5-2 with Phenix2.0
Mogul	:	2022.3.0, CSD as543be (2022)
Xtriage (Phenix)	:	2.0
EDS	:	3.0
Percentile statistics	:	20250101.v01 (using entries in the PDB archive January 1st 2025)
CCP4	:	9.0.010 (Gargrove)
Density-Fitness	:	1.0.12
Ideal geometry (proteins)	:	Engh & Huber (2001)
Ideal geometry (DNA, RNA)	:	Parkinson et al. (1996)
Validation Pipeline (wwPDB-VP)	:	2.49

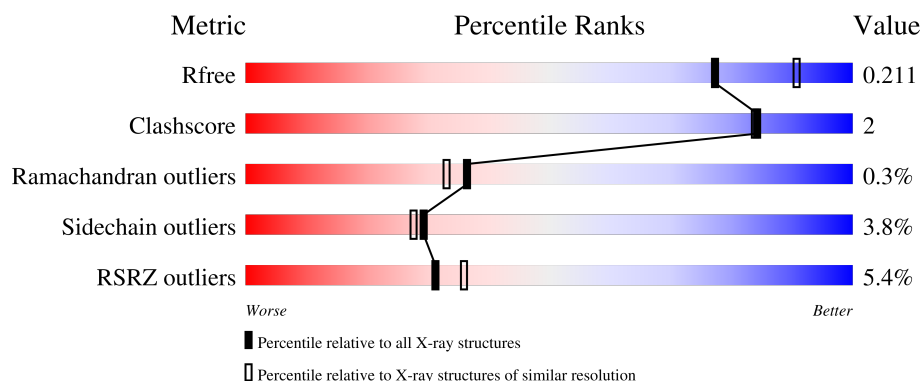
1 Overall quality at a glance

The following experimental techniques were used to determine the structure:

X-RAY DIFFRACTION

The reported resolution of this entry is 2.14 Å.

Percentile scores (ranging between 0-100) for global validation metrics of the entry are shown in the following graphic. The table shows the number of entries on which the scores are based.



Metric	Whole archive (#Entries)	Similar resolution (#Entries, resolution range(Å))
R_{free}	180053	3689 (2.16-2.12)
Clashscore	190562	3812 (2.16-2.12)
Ramachandran outliers	187476	3773 (2.16-2.12)
Sidechain outliers	187428	3772 (2.16-2.12)
RSRZ outliers	180081	3691 (2.16-2.12)

The table below summarises the geometric issues observed across the polymeric chains and their fit to the electron density. The red, orange, yellow and green segments of the lower bar indicate the fraction of residues that contain outliers for ≥ 3 , 2, 1 and 0 types of geometric quality criteria respectively. A grey segment represents the fraction of residues that are not modelled. The numeric value for each fraction is indicated below the corresponding segment, with a dot representing fractions $\leq 5\%$. The upper red bar (where present) indicates the fraction of residues that have poor fit to the electron density. The numeric value is given above the bar.

Mol	Chain	Length	Quality of chain
1	A	385	<div> <div>2%</div> <div> <div></div> <div>81%</div> <div>6%</div> <div>13%</div> </div> </div>
1	B	385	<div> <div>3%</div> <div> <div></div> <div>80%</div> <div>7%</div> <div>13%</div> </div> </div>
1	C	385	<div> <div>2%</div> <div> <div></div> <div>82%</div> <div>5%</div> <div>13%</div> </div> </div>
1	D	385	<div> <div>12%</div> <div> <div></div> <div>75%</div> <div>9%</div> <div>•</div> <div>15%</div> </div> </div>

2 Entry composition

There are 5 unique types of molecules in this entry. The entry contains 10985 atoms, of which 0 are hydrogens and 0 are deuteriums.

In the tables below, the ZeroOcc column contains the number of atoms modelled with zero occupancy, the AltConf column contains the number of residues with at least one atom in alternate conformation and the Trace column contains the number of residues modelled with at most 2 atoms.

- Molecule 1 is a protein called Arginase.

Mol	Chain	Residues	Atoms					ZeroOcc	AltConf	Trace
1	A	336	Total	C	N	O	S	0	1	0
			2583	1627	451	490	15			
1	B	335	Total	C	N	O	S	0	1	0
			2573	1621	448	489	15			
1	C	334	Total	C	N	O	S	0	1	0
			2565	1617	447	485	16			
1	D	329	Total	C	N	O	S	0	0	0
			2522	1590	440	478	14			

There are 84 discrepancies between the modelled and reference sequences:

Chain	Residue	Modelled	Actual	Comment	Reference
A	-20	MET	-	expression tag	UNP Q6WVP6
A	-19	GLY	-	expression tag	UNP Q6WVP6
A	-18	SER	-	expression tag	UNP Q6WVP6
A	-17	SER	-	expression tag	UNP Q6WVP6
A	-16	HIS	-	expression tag	UNP Q6WVP6
A	-15	HIS	-	expression tag	UNP Q6WVP6
A	-14	HIS	-	expression tag	UNP Q6WVP6
A	-13	HIS	-	expression tag	UNP Q6WVP6
A	-12	HIS	-	expression tag	UNP Q6WVP6
A	-11	HIS	-	expression tag	UNP Q6WVP6
A	-10	SER	-	expression tag	UNP Q6WVP6
A	-9	SER	-	expression tag	UNP Q6WVP6
A	-8	GLY	-	expression tag	UNP Q6WVP6
A	-7	LEU	-	expression tag	UNP Q6WVP6
A	-6	VAL	-	expression tag	UNP Q6WVP6
A	-5	PRO	-	expression tag	UNP Q6WVP6
A	-4	ARG	-	expression tag	UNP Q6WVP6
A	-3	GLY	-	expression tag	UNP Q6WVP6
A	-2	SER	-	expression tag	UNP Q6WVP6
A	-1	HIS	-	expression tag	UNP Q6WVP6
A	0	MET	-	expression tag	UNP Q6WVP6

Continued on next page...

Continued from previous page...

Chain	Residue	Modelled	Actual	Comment	Reference
B	-20	MET	-	expression tag	UNP Q6WVP6
B	-19	GLY	-	expression tag	UNP Q6WVP6
B	-18	SER	-	expression tag	UNP Q6WVP6
B	-17	SER	-	expression tag	UNP Q6WVP6
B	-16	HIS	-	expression tag	UNP Q6WVP6
B	-15	HIS	-	expression tag	UNP Q6WVP6
B	-14	HIS	-	expression tag	UNP Q6WVP6
B	-13	HIS	-	expression tag	UNP Q6WVP6
B	-12	HIS	-	expression tag	UNP Q6WVP6
B	-11	HIS	-	expression tag	UNP Q6WVP6
B	-10	SER	-	expression tag	UNP Q6WVP6
B	-9	SER	-	expression tag	UNP Q6WVP6
B	-8	GLY	-	expression tag	UNP Q6WVP6
B	-7	LEU	-	expression tag	UNP Q6WVP6
B	-6	VAL	-	expression tag	UNP Q6WVP6
B	-5	PRO	-	expression tag	UNP Q6WVP6
B	-4	ARG	-	expression tag	UNP Q6WVP6
B	-3	GLY	-	expression tag	UNP Q6WVP6
B	-2	SER	-	expression tag	UNP Q6WVP6
B	-1	HIS	-	expression tag	UNP Q6WVP6
B	0	MET	-	expression tag	UNP Q6WVP6
C	-20	MET	-	expression tag	UNP Q6WVP6
C	-19	GLY	-	expression tag	UNP Q6WVP6
C	-18	SER	-	expression tag	UNP Q6WVP6
C	-17	SER	-	expression tag	UNP Q6WVP6
C	-16	HIS	-	expression tag	UNP Q6WVP6
C	-15	HIS	-	expression tag	UNP Q6WVP6
C	-14	HIS	-	expression tag	UNP Q6WVP6
C	-13	HIS	-	expression tag	UNP Q6WVP6
C	-12	HIS	-	expression tag	UNP Q6WVP6
C	-11	HIS	-	expression tag	UNP Q6WVP6
C	-10	SER	-	expression tag	UNP Q6WVP6
C	-9	SER	-	expression tag	UNP Q6WVP6
C	-8	GLY	-	expression tag	UNP Q6WVP6
C	-7	LEU	-	expression tag	UNP Q6WVP6
C	-6	VAL	-	expression tag	UNP Q6WVP6
C	-5	PRO	-	expression tag	UNP Q6WVP6
C	-4	ARG	-	expression tag	UNP Q6WVP6
C	-3	GLY	-	expression tag	UNP Q6WVP6
C	-2	SER	-	expression tag	UNP Q6WVP6
C	-1	HIS	-	expression tag	UNP Q6WVP6
C	0	MET	-	expression tag	UNP Q6WVP6

Continued on next page...

Continued from previous page...

Chain	Residue	Modelled	Actual	Comment	Reference
D	-20	MET	-	expression tag	UNP Q6WVP6
D	-19	GLY	-	expression tag	UNP Q6WVP6
D	-18	SER	-	expression tag	UNP Q6WVP6
D	-17	SER	-	expression tag	UNP Q6WVP6
D	-16	HIS	-	expression tag	UNP Q6WVP6
D	-15	HIS	-	expression tag	UNP Q6WVP6
D	-14	HIS	-	expression tag	UNP Q6WVP6
D	-13	HIS	-	expression tag	UNP Q6WVP6
D	-12	HIS	-	expression tag	UNP Q6WVP6
D	-11	HIS	-	expression tag	UNP Q6WVP6
D	-10	SER	-	expression tag	UNP Q6WVP6
D	-9	SER	-	expression tag	UNP Q6WVP6
D	-8	GLY	-	expression tag	UNP Q6WVP6
D	-7	LEU	-	expression tag	UNP Q6WVP6
D	-6	VAL	-	expression tag	UNP Q6WVP6
D	-5	PRO	-	expression tag	UNP Q6WVP6
D	-4	ARG	-	expression tag	UNP Q6WVP6
D	-3	GLY	-	expression tag	UNP Q6WVP6
D	-2	SER	-	expression tag	UNP Q6WVP6
D	-1	HIS	-	expression tag	UNP Q6WVP6
D	0	MET	-	expression tag	UNP Q6WVP6

- Molecule 2 is MANGANESE (II) ION (CCD ID: MN) (formula: Mn).

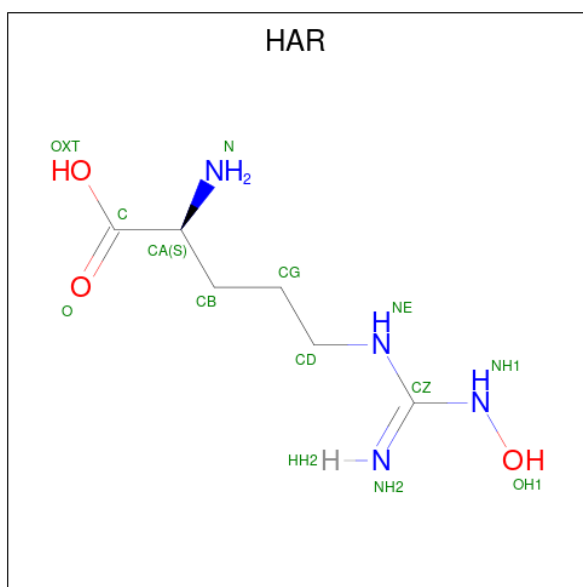
Mol	Chain	Residues	Atoms	ZeroOcc	AltConf
2	A	2	Total Mn 2 2	0	0
2	B	2	Total Mn 2 2	0	0
2	C	2	Total Mn 2 2	0	0
2	D	2	Total Mn 2 2	0	0

- Molecule 3 is GLYCEROL (CCD ID: GOL) (formula: C₃H₈O₃).



Mol	Chain	Residues	Atoms			ZeroOcc	AltConf
3	A	1	Total	C	O	0	0
			6	3	3		
3	A	1	Total	C	O	0	0
			6	3	3		
3	B	1	Total	C	O	0	0
			6	3	3		
3	B	1	Total	C	O	0	0
			6	3	3		
3	C	1	Total	C	O	0	0
			6	3	3		
3	C	1	Total	C	O	0	0
			6	3	3		

- Molecule 4 is N-OMEGA-HYDROXY-L-ARGININE (CCD ID: HAR) (formula: $C_6H_{14}N_4O_3$).



Mol	Chain	Residues	Atoms				ZeroOcc	AltConf
4	A	1	Total	C	N	O	0	1
			26	12	8	6		
4	B	1	Total	C	N	O	0	1
			26	12	8	6		
4	C	1	Total	C	N	O	0	1
			26	12	8	6		
4	D	1	Total	C	N	O	0	0
			13	6	4	3		

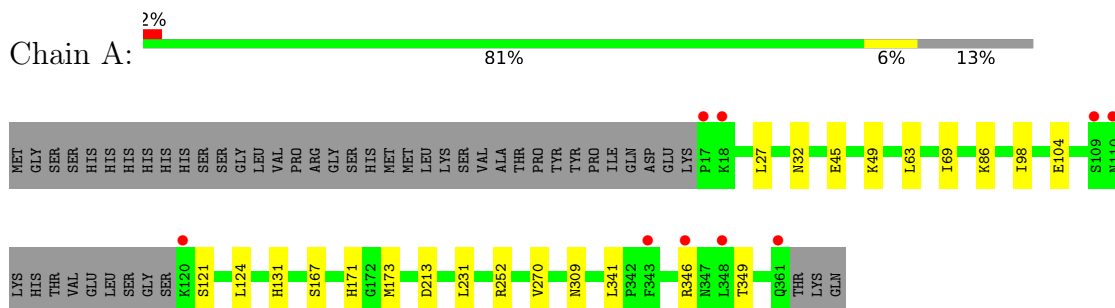
- Molecule 5 is water.

Mol	Chain	Residues	Atoms		ZeroOcc	AltConf
5	A	206	Total	O	0	0
			206	206		
5	B	218	Total	O	0	0
			218	218		
5	C	143	Total	O	0	0
			143	143		
5	D	40	Total	O	0	0
			40	40		

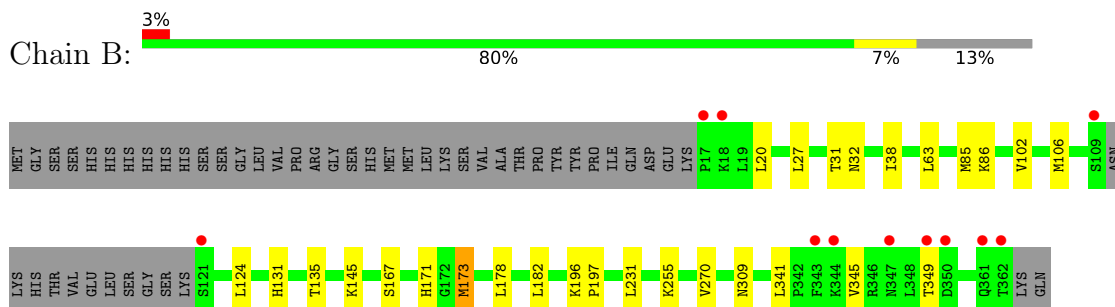
3 Residue-property plots [i](#)

These plots are drawn for all protein, RNA, DNA and oligosaccharide chains in the entry. The first graphic for a chain summarises the proportions of the various outlier classes displayed in the second graphic. The second graphic shows the sequence view annotated by issues in geometry and electron density. Residues are color-coded according to the number of geometric quality criteria for which they contain at least one outlier: green = 0, yellow = 1, orange = 2 and red = 3 or more. A red dot above a residue indicates a poor fit to the electron density ($RSRZ > 2$). Stretches of 2 or more consecutive residues without any outlier are shown as a green connector. Residues present in the sample, but not in the model, are shown in grey.

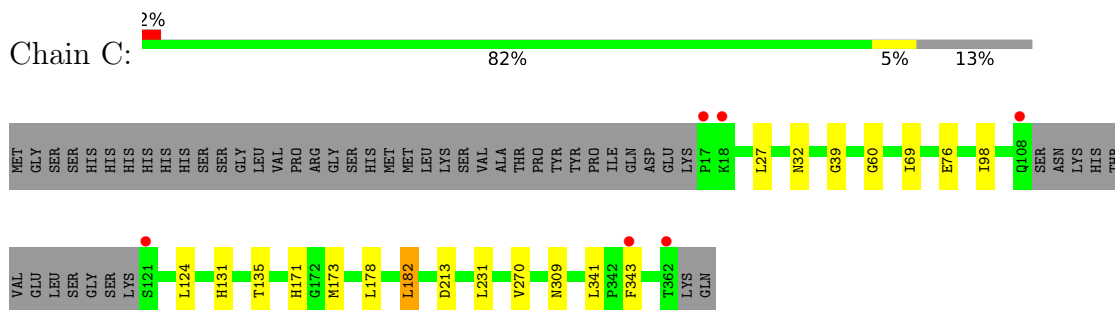
- Molecule 1: Arginase



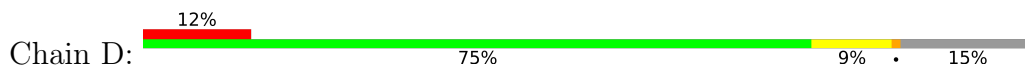
- Molecule 1: Arginase

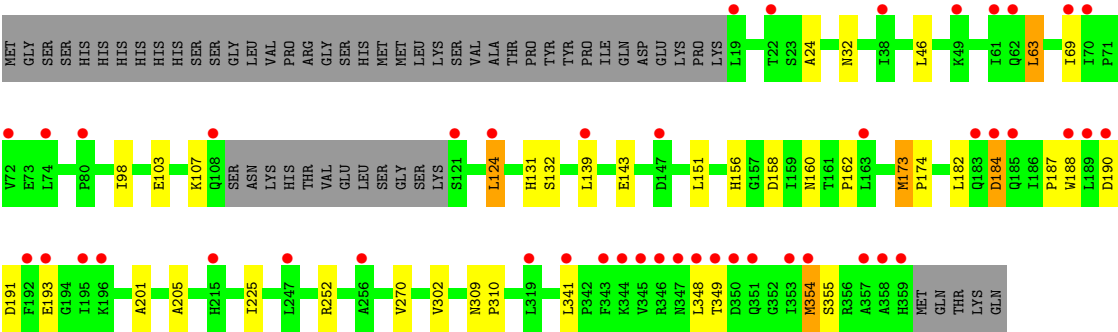


- Molecule 1: Arginase



- Molecule 1: Arginase





4 Data and refinement statistics

Property	Value	Source
Space group	P 21 3	Depositor
Cell constants a, b, c, α , β , γ	177.76Å 177.76Å 177.76Å 90.00° 90.00° 90.00°	Depositor
Resolution (Å)	49.30 – 2.14 49.30 – 2.14	Depositor EDS
% Data completeness (in resolution range)	99.9 (49.30-2.14) 99.7 (49.30-2.14)	Depositor EDS
R_{merge}	0.15	Depositor
R_{sym}	0.15	Depositor
$\langle I/\sigma(I) \rangle$ ¹	2.05 (at 2.14Å)	Xtriage
Refinement program	PHENIX (phenix.refine: 1.8.2_1309)	Depositor
R, R_{free}	0.176 , 0.209 0.181 , 0.211	Depositor DCC
R_{free} test set	5117 reflections (4.99%)	wwPDB-VP
Wilson B-factor (Å ²)	25.7	Xtriage
Anisotropy	0.000	Xtriage
Bulk solvent k_{sol} (e/Å ³), B_{sol} (Å ²)	0.34 , 38.1	EDS
L-test for twinning ²	$\langle L \rangle = 0.50$, $\langle L^2 \rangle = 0.33$	Xtriage
Estimated twinning fraction	0.024 for l,-k,h	Xtriage
F_o, F_c correlation	0.95	EDS
Total number of atoms	10985	wwPDB-VP
Average B, all atoms (Å ²)	30.0	wwPDB-VP

Xtriage's analysis on translational NCS is as follows: *The largest off-origin peak in the Patterson function is 1.70% of the height of the origin peak. No significant pseudotranslation is detected.*

¹Intensities estimated from amplitudes.

²Theoretical values of $\langle |L| \rangle$, $\langle L^2 \rangle$ for acentric reflections are 0.5, 0.333 respectively for untwinned datasets, and 0.375, 0.2 for perfectly twinned datasets.

5 Model quality [i](#)

5.1 Standard geometry [i](#)

Bond lengths and bond angles in the following residue types are not validated in this section: MN, HAR, GOL

The Z score for a bond length (or angle) is the number of standard deviations the observed value is removed from the expected value. A bond length (or angle) with $|Z| > 5$ is considered an outlier worth inspection. RMSZ is the root-mean-square of all Z scores of the bond lengths (or angles).

Mol	Chain	Bond lengths		Bond angles	
		RMSZ	# $ Z > 5$	RMSZ	# $ Z > 5$
1	A	0.37	0/2634	0.75	2/3569 (0.1%)
1	B	0.37	0/2624	0.76	4/3557 (0.1%)
1	C	0.33	0/2616	0.75	0/3546
1	D	0.31	0/2569	0.77	2/3484 (0.1%)
All	All	0.35	0/10443	0.76	8/14156 (0.1%)

There are no bond length outliers.

All (8) bond angle outliers are listed below:

Mol	Chain	Res	Type	Atoms	Z	Observed(°)	Ideal(°)
1	B	145	LYS	CA-C-N	5.95	125.83	119.28
1	B	145	LYS	C-N-CA	5.95	125.83	119.28
1	B	309	ASN	CA-C-N	5.71	125.42	119.82
1	B	309	ASN	C-N-CA	5.71	125.42	119.82
1	D	309	ASN	CA-C-N	5.45	125.12	119.56
1	D	309	ASN	C-N-CA	5.45	125.12	119.56
1	A	309	ASN	CA-C-N	5.09	125.17	119.87
1	A	309	ASN	C-N-CA	5.09	125.17	119.87

There are no chirality outliers.

There are no planarity outliers.

5.2 Too-close contacts [i](#)

In the following table, the Non-H and H(model) columns list the number of non-hydrogen atoms and hydrogen atoms in the chain respectively. The H(added) column lists the number of hydrogen atoms added and optimized by MolProbity. The Clashes column lists the number of clashes within the asymmetric unit, whereas Symm-Clashes lists symmetry-related clashes.

Mol	Chain	Non-H	H(model)	H(added)	Clashes	Symm-Clashes
1	A	2583	0	2597	6	0
1	B	2573	0	2585	9	0
1	C	2565	0	2581	10	0
1	D	2522	0	2531	21	0
2	A	2	0	0	0	0
2	B	2	0	0	0	0
2	C	2	0	0	0	0
2	D	2	0	0	0	0
3	A	12	0	16	0	0
3	B	12	0	16	0	0
3	C	12	0	16	0	0
4	A	26	0	22	3	0
4	B	26	0	24	2	0
4	C	26	0	22	4	0
4	D	13	0	11	2	0
5	A	206	0	0	0	0
5	B	218	0	0	2	0
5	C	143	0	0	1	0
5	D	40	0	0	0	0
All	All	10985	0	10421	48	0

The all-atom clashscore is defined as the number of clashes found per 1000 atoms (including hydrogen atoms). The all-atom clashscore for this structure is 2.

All (48) close contacts within the same asymmetric unit are listed below, sorted by their clash magnitude.

Atom-1	Atom-2	Interatomic distance (Å)	Clash overlap (Å)
1:D:184:ASP:N	1:D:184:ASP:OD1	2.29	0.65
1:A:213[A]:ASP:OD2	4:A:405[A]:HAR:N	2.33	0.61
1:D:158:ASP:HB3	1:D:174:PRO:HD2	1.83	0.61
1:D:188:TRP:CH2	1:D:193:GLU:HG3	2.37	0.60
1:D:348:LEU:HD22	1:D:355:SER:HB3	1.84	0.59
1:C:213:ASP:OD2	4:C:405[B]:HAR:N	2.36	0.59
1:B:255:LYS:NZ	5:B:679:HOH:O	2.36	0.57
1:A:171:HIS:CE1	4:A:405[A]:HAR:HE	2.24	0.56
1:B:196:LYS:HD2	1:B:197:PRO:HD2	1.87	0.56
1:D:173:MET:N	1:D:174:PRO:HD3	2.21	0.55
1:D:190:ASP:HA	1:D:193:GLU:OE2	2.07	0.55
1:D:188:TRP:HH2	1:D:193:GLU:HG3	1.74	0.53
1:D:160:ASN:ND2	4:D:401:HAR:OXT	2.41	0.52
1:A:69:ILE:HD13	1:A:98:ILE:HA	1.91	0.52
1:C:69:ILE:HD13	1:C:98:ILE:HA	1.91	0.52

Continued on next page...

Continued from previous page...

Atom-1	Atom-2	Interatomic distance (Å)	Clash overlap (Å)
1:D:162:PRO:HG2	1:D:187:PRO:HD2	1.93	0.51
1:C:213:ASP:OD2	4:C:405[A]:HAR:N	2.43	0.51
1:C:171:HIS:CE1	4:C:405[B]:HAR:HE	2.30	0.50
1:D:103:GLU:OE2	1:D:107:LYS:NZ	2.44	0.49
1:D:69:ILE:HD13	1:D:98:ILE:HA	1.94	0.49
1:C:60:GLY:HA3	1:C:343:PHE:CZ	2.48	0.49
1:D:124:LEU:HB3	1:D:302:VAL:HG22	1.95	0.48
1:D:46:LEU:HD22	1:D:310:PRO:HG3	1.95	0.48
1:D:139:LEU:O	1:D:143:GLU:HG2	2.13	0.48
1:D:24:ALA:HB3	1:D:63:LEU:HD23	1.95	0.48
1:B:171:HIS:CE1	4:B:405[A]:HAR:HE	2.31	0.47
1:D:191:ASP:OD1	1:D:191:ASP:N	2.47	0.47
1:D:156:HIS:HB2	4:D:401:HAR:HH1	1.80	0.47
1:B:86:LYS:NZ	1:B:167:SER:O	2.48	0.47
1:B:102:VAL:O	1:B:106:MET:HG2	2.16	0.46
1:A:86:LYS:NZ	1:A:167:SER:O	2.47	0.45
1:B:85:MET:HG2	1:B:173:MET:HE1	1.99	0.45
4:A:405[A]:HAR:HH1	4:A:405[A]:HAR:HD2	1.61	0.45
1:C:135:THR:HA	1:C:178:LEU:HD11	1.99	0.44
1:B:135:THR:HA	1:B:178:LEU:HD11	1.99	0.44
4:B:405[A]:HAR:HH1	4:B:405[A]:HAR:HD2	1.44	0.43
1:A:45:GLU:HG3	1:A:49:LYS:HD3	2.00	0.43
4:C:405[B]:HAR:HH1	4:C:405[B]:HAR:HD2	1.53	0.43
1:D:354:MET:HE3	1:D:354:MET:HB3	1.82	0.42
1:D:151:LEU:HD23	1:D:205:ALA:HB3	2.01	0.42
1:C:182:LEU:HD12	1:C:182:LEU:HA	1.88	0.42
1:C:39:GLY:HA3	1:C:309:ASN:OD1	2.19	0.42
1:C:213:ASP:HB3	5:C:618:HOH:O	2.20	0.42
1:D:201:ALA:HB1	1:D:225:ILE:HG12	2.01	0.42
1:C:76:GLU:OE1	1:C:76:GLU:N	2.41	0.41
1:D:132:SER:HA	1:D:174:PRO:HG3	2.02	0.41
1:B:38:ILE:HG22	5:B:600:HOH:O	2.20	0.41
1:A:252:ARG:NE	1:B:20:LEU:HD21	2.37	0.40

There are no symmetry-related clashes.

5.3 Torsion angles ⓘ

5.3.1 Protein backbone ⓘ

In the following table, the Percentiles column shows the percent Ramachandran outliers of the chain as a percentile score with respect to all X-ray entries followed by that with respect to entries of similar resolution.

The Analysed column shows the number of residues for which the backbone conformation was analysed, and the total number of residues.

Mol	Chain	Analysed	Favoured	Allowed	Outliers	Percentiles	
1	A	333/385 (86%)	327 (98%)	5 (2%)	1 (0%)	36	33
1	B	332/385 (86%)	326 (98%)	5 (2%)	1 (0%)	36	33
1	C	331/385 (86%)	323 (98%)	7 (2%)	1 (0%)	36	33
1	D	325/385 (84%)	315 (97%)	9 (3%)	1 (0%)	36	33
All	All	1321/1540 (86%)	1291 (98%)	26 (2%)	4 (0%)	36	33

All (4) Ramachandran outliers are listed below:

Mol	Chain	Res	Type
1	A	173	MET
1	C	173	MET
1	D	173	MET
1	B	173	MET

5.3.2 Protein sidechains ⓘ

In the following table, the Percentiles column shows the percent sidechain outliers of the chain as a percentile score with respect to all X-ray entries followed by that with respect to entries of similar resolution.

The Analysed column shows the number of residues for which the sidechain conformation was analysed, and the total number of residues.

Mol	Chain	Analysed	Rotameric	Outliers	Percentiles	
1	A	284/327 (87%)	272 (96%)	12 (4%)	26	23
1	B	283/327 (86%)	271 (96%)	12 (4%)	26	23
1	C	282/327 (86%)	274 (97%)	8 (3%)	38	39
1	D	276/327 (84%)	265 (96%)	11 (4%)	28	25
All	All	1125/1308 (86%)	1082 (96%)	43 (4%)	29	28

All (43) residues with a non-rotameric sidechain are listed below:

Mol	Chain	Res	Type
1	A	27	LEU
1	A	32	ASN
1	A	63	LEU
1	A	104	GLU
1	A	121	SER
1	A	124	LEU
1	A	131	HIS
1	A	231	LEU
1	A	270	VAL
1	A	341	LEU
1	A	346	ARG
1	A	349	THR
1	B	27	LEU
1	B	31	THR
1	B	32	ASN
1	B	63	LEU
1	B	124	LEU
1	B	131	HIS
1	B	182	LEU
1	B	231	LEU
1	B	270	VAL
1	B	341	LEU
1	B	345	VAL
1	B	349	THR
1	C	27	LEU
1	C	32	ASN
1	C	124	LEU
1	C	131	HIS
1	C	182	LEU
1	C	231	LEU
1	C	270	VAL
1	C	341	LEU
1	D	32	ASN
1	D	63	LEU
1	D	124	LEU
1	D	131	HIS
1	D	182	LEU
1	D	184	ASP
1	D	252	ARG
1	D	270	VAL
1	D	341	LEU
1	D	349	THR

Continued on next page...

Continued from previous page...

Mol	Chain	Res	Type
1	D	354	MET

Sometimes sidechains can be flipped to improve hydrogen bonding and reduce clashes. All (7) such sidechains are listed below:

Mol	Chain	Res	Type
1	B	108	GLN
1	B	160	ASN
1	B	164	ASN
1	D	160	ASN
1	D	185	GLN
1	D	200	ASN
1	D	335	HIS

5.3.3 RNA [i](#)

There are no RNA molecules in this entry.

5.4 Non-standard residues in protein, DNA, RNA chains [i](#)

There are no non-standard protein/DNA/RNA residues in this entry.

5.5 Carbohydrates [i](#)

There are no oligosaccharides in this entry.

5.6 Ligand geometry [i](#)

Of 21 ligands modelled in this entry, 8 are monoatomic - leaving 13 for Mogul analysis.

In the following table, the Counts columns list the number of bonds (or angles) for which Mogul statistics could be retrieved, the number of bonds (or angles) that are observed in the model and the number of bonds (or angles) that are defined in the Chemical Component Dictionary. The Link column lists molecule types, if any, to which the group is linked. The Z score for a bond length (or angle) is the number of standard deviations the observed value is removed from the expected value. A bond length (or angle) with $|Z| > 2$ is considered an outlier worth inspection. RMSZ is the root-mean-square of all Z scores of the bond lengths (or angles).

Mol	Type	Chain	Res	Link	Bond lengths			Bond angles		
					Counts	RMSZ	$\# Z > 2$	Counts	RMSZ	$\# Z > 2$
4	HAR	A	405[B]	2	9,12,12	3.05	3 (33%)	10,14,14	1.76	4 (40%)

Mol	Type	Chain	Res	Link	Bond lengths			Bond angles		
					Counts	RMSZ	# Z > 2	Counts	RMSZ	# Z > 2
4	HAR	C	405[B]	2	9,12,12	2.47	2 (22%)	10,14,14	1.90	4 (40%)
3	GOL	A	403	-	5,5,5	0.32	0	5,5,5	0.54	0
3	GOL	B	404	-	5,5,5	0.40	0	5,5,5	0.27	0
3	GOL	A	404	-	5,5,5	0.39	0	5,5,5	0.31	0
4	HAR	A	405[A]	2	9,12,12	3.07	3 (33%)	10,14,14	1.82	5 (50%)
4	HAR	B	405[B]	2	9,12,12	2.59	3 (33%)	10,14,14	1.67	3 (30%)
3	GOL	B	403	-	5,5,5	0.30	0	5,5,5	0.40	0
4	HAR	C	405[A]	2	9,12,12	2.49	2 (22%)	10,14,14	1.78	4 (40%)
3	GOL	C	404	-	5,5,5	0.36	0	5,5,5	0.40	0
4	HAR	D	401	2	9,12,12	2.40	2 (22%)	10,14,14	1.56	2 (20%)
4	HAR	B	405[A]	2	9,12,12	2.64	3 (33%)	10,14,14	2.15	6 (60%)
3	GOL	C	403	-	5,5,5	0.37	0	5,5,5	0.28	0

In the following table, the Chirals column lists the number of chiral outliers, the number of chiral centers analysed, the number of these observed in the model and the number defined in the Chemical Component Dictionary. Similar counts are reported in the Torsion and Rings columns. '-' means no outliers of that kind were identified.

Mol	Type	Chain	Res	Link	Chirals	Torsions	Rings
4	HAR	A	405[B]	2	-	3/11/13/13	-
4	HAR	C	405[B]	2	-	2/11/13/13	-
3	GOL	A	403	-	-	0/4/4/4	-
3	GOL	B	404	-	-	2/4/4/4	-
3	GOL	A	404	-	-	2/4/4/4	-
4	HAR	A	405[A]	2	-	1/11/13/13	-
4	HAR	B	405[B]	2	-	3/11/13/13	-
3	GOL	B	403	-	-	2/4/4/4	-
4	HAR	C	405[A]	2	-	3/11/13/13	-
3	GOL	C	404	-	-	2/4/4/4	-
4	HAR	D	401	2	-	2/11/13/13	-
4	HAR	B	405[A]	2	-	5/11/13/13	-
3	GOL	C	403	-	-	2/4/4/4	-

All (18) bond length outliers are listed below:

Mol	Chain	Res	Type	Atoms	Z	Observed(Å)	Ideal(Å)
4	A	405[A]	HAR	CZ-NH1	7.00	1.50	1.34
4	B	405[A]	HAR	CZ-NH1	6.94	1.50	1.34

Continued on next page...

Continued from previous page...

Mol	Chain	Res	Type	Atoms	Z	Observed(Å)	Ideal(Å)
4	B	405[B]	HAR	CZ-NH1	6.93	1.50	1.34
4	A	405[B]	HAR	CZ-NH1	6.92	1.49	1.34
4	C	405[A]	HAR	CZ-NH1	6.64	1.49	1.34
4	C	405[B]	HAR	CZ-NH1	6.53	1.49	1.34
4	D	401	HAR	CZ-NH1	6.33	1.48	1.34
4	A	405[B]	HAR	O-C	5.07	1.37	1.22
4	A	405[A]	HAR	O-C	5.00	1.36	1.22
4	B	405[A]	HAR	OH1-NH1	-2.81	1.33	1.40
4	C	405[B]	HAR	OH1-NH1	-2.76	1.33	1.40
4	C	405[A]	HAR	OH1-NH1	-2.61	1.33	1.40
4	D	401	HAR	OH1-NH1	-2.55	1.33	1.40
4	A	405[A]	HAR	OH1-NH1	-2.55	1.33	1.40
4	B	405[B]	HAR	OH1-NH1	-2.38	1.34	1.40
4	A	405[B]	HAR	OH1-NH1	-2.34	1.34	1.40
4	B	405[A]	HAR	OXT-C	2.14	1.37	1.30
4	B	405[B]	HAR	OXT-C	2.13	1.37	1.30

All (28) bond angle outliers are listed below:

Mol	Chain	Res	Type	Atoms	Z	Observed(°)	Ideal(°)
4	D	401	HAR	OXT-C-O	-3.26	116.69	124.08
4	B	405[A]	HAR	NH1-CZ-NH2	3.18	127.42	120.15
4	A	405[B]	HAR	OXT-C-O	-2.97	117.35	124.08
4	C	405[A]	HAR	OXT-C-O	-2.94	117.42	124.08
4	A	405[A]	HAR	OXT-C-O	-2.87	117.58	124.08
4	B	405[A]	HAR	NE-CZ-NH1	-2.86	110.25	116.80
4	C	405[B]	HAR	OXT-C-O	-2.84	117.63	124.08
4	A	405[A]	HAR	NH1-CZ-NH2	2.77	126.47	120.15
4	C	405[B]	HAR	NE-CZ-NH1	-2.77	110.46	116.80
4	C	405[B]	HAR	NH1-CZ-NH2	2.71	126.34	120.15
4	B	405[B]	HAR	OXT-C-O	-2.69	117.97	124.08
4	B	405[B]	HAR	CB-CA-N	2.64	116.99	110.12
4	B	405[A]	HAR	OXT-C-O	-2.59	118.21	124.08
4	A	405[B]	HAR	CB-CA-N	2.51	116.65	110.12
4	C	405[A]	HAR	CB-CA-N	2.44	116.49	110.12
4	C	405[A]	HAR	NH1-CZ-NH2	2.43	125.69	120.15
4	A	405[B]	HAR	NH1-CZ-NH2	2.35	125.51	120.15
4	B	405[A]	HAR	CD-NE-CZ	-2.33	119.18	123.46
4	D	401	HAR	CB-CA-N	2.32	116.17	110.12
4	B	405[A]	HAR	CB-CG-CD	-2.32	105.37	112.07
4	A	405[A]	HAR	NE-CZ-NH1	-2.29	111.56	116.80
4	A	405[A]	HAR	CB-CA-N	2.28	116.06	110.12

Continued on next page...

Continued from previous page...

Mol	Chain	Res	Type	Atoms	Z	Observed(°)	Ideal(°)
4	C	405[B]	HAR	CB-CA-N	2.25	115.98	110.12
4	C	405[A]	HAR	NE-CZ-NH1	-2.21	111.73	116.80
4	B	405[B]	HAR	NH1-CZ-NH2	2.15	125.06	120.15
4	A	405[B]	HAR	NE-CZ-NH1	-2.10	112.00	116.80
4	A	405[A]	HAR	CB-CG-CD	-2.05	106.15	112.07
4	B	405[A]	HAR	CB-CA-N	2.04	115.45	110.12

There are no chirality outliers.

All (29) torsion outliers are listed below:

Mol	Chain	Res	Type	Atoms
3	A	404	GOL	O1-C1-C2-C3
3	B	403	GOL	O1-C1-C2-O2
3	B	403	GOL	O1-C1-C2-C3
3	C	404	GOL	O1-C1-C2-C3
4	A	405[A]	HAR	C-CA-CB-CG
3	A	404	GOL	O1-C1-C2-O2
4	B	405[A]	HAR	NE-CD-CG-CB
3	B	404	GOL	O1-C1-C2-C3
3	C	403	GOL	O1-C1-C2-C3
3	B	404	GOL	O1-C1-C2-O2
3	C	403	GOL	O1-C1-C2-O2
3	C	404	GOL	O1-C1-C2-O2
4	C	405[A]	HAR	NE-CD-CG-CB
4	A	405[B]	HAR	C-CA-CB-CG
4	B	405[B]	HAR	C-CA-CB-CG
4	C	405[A]	HAR	C-CA-CB-CG
4	B	405[A]	HAR	OXT-C-CA-CB
4	D	401	HAR	OXT-C-CA-CB
4	B	405[A]	HAR	O-C-CA-CB
4	D	401	HAR	O-C-CA-CB
4	B	405[B]	HAR	NE-CD-CG-CB
4	A	405[B]	HAR	NE-CD-CG-CB
4	A	405[B]	HAR	CG-CD-NE-CZ
4	B	405[A]	HAR	CG-CD-NE-CZ
4	B	405[B]	HAR	CG-CD-NE-CZ
4	C	405[A]	HAR	CG-CD-NE-CZ
4	C	405[B]	HAR	O-C-CA-N
4	B	405[A]	HAR	OXT-C-CA-N
4	C	405[B]	HAR	O-C-CA-CB

There are no ring outliers.

5 monomers are involved in 11 short contacts:

Mol	Chain	Res	Type	Clashes	Symm-Clashes
4	C	405[B]	HAR	3	0
4	A	405[A]	HAR	3	0
4	C	405[A]	HAR	1	0
4	D	401	HAR	2	0
4	B	405[A]	HAR	2	0

5.7 Other polymers [i](#)

There are no such residues in this entry.

5.8 Polymer linkage issues [i](#)

There are no chain breaks in this entry.

6 Fit of model and data ⓘ

6.1 Protein, DNA and RNA chains ⓘ

In the following table, the column labelled ‘#RSRZ > 2’ contains the number (and percentage) of RSRZ outliers, followed by percent RSRZ outliers for the chain as percentile scores relative to all X-ray entries and entries of similar resolution. The OWAB column contains the minimum, median, 95th percentile and maximum values of the occupancy-weighted average B-factor per residue. The column labelled ‘Q < 0.9’ lists the number of (and percentage) of residues with an average occupancy less than 0.9.

Mol	Chain	Analysed	<RSRZ>	#RSRZ>2	OWAB(Å ²)	Q<0.9
1	A	336/385 (87%)	-0.55	9 (2%) 56 60	10, 18, 40, 57	8 (2%)
1	B	335/385 (87%)	-0.52	11 (3%) 49 53	11, 18, 42, 66	7 (2%)
1	C	334/385 (86%)	-0.18	6 (1%) 67 71	18, 27, 47, 79	3 (0%)
1	D	329/385 (85%)	1.14	46 (13%) 6 8	31, 45, 61, 71	32 (9%)
All	All	1334/1540 (86%)	-0.03	72 (5%) 31 36	10, 26, 56, 79	50 (3%)

All (72) RSRZ outliers are listed below:

Mol	Chain	Res	Type	RSRZ
1	D	188	TRP	10.9
1	D	343	PHE	7.5
1	D	351	GLN	7.3
1	D	190	ASP	7.0
1	D	350	ASP	6.1
1	D	349	THR	5.6
1	D	345	VAL	5.6
1	D	193	GLU	5.4
1	D	347	ASN	5.3
1	B	109	SER	5.2
1	D	19	LEU	5.1
1	D	192	PHE	5.0
1	A	343	PHE	5.0
1	C	17	PRO	4.9
1	D	344	LYS	4.7
1	D	346	ARG	4.5
1	B	343	PHE	4.4
1	D	358	ALA	4.4
1	D	108	GLN	4.3
1	A	110	ASN	4.3
1	D	353	ILE	4.2

Continued on next page...

Continued from previous page...

Mol	Chain	Res	Type	RSRZ
1	D	348	LEU	4.2
1	D	359	HIS	4.1
1	C	362	THR	3.9
1	A	18	LYS	3.9
1	A	120	LYS	3.9
1	D	189	LEU	3.8
1	D	357	ALA	3.6
1	C	18	LYS	3.4
1	A	361	GLN	3.4
1	C	108	GLN	3.4
1	D	354	MET	3.4
1	A	17	PRO	3.3
1	C	343	PHE	3.3
1	D	247	LEU	3.3
1	D	196	LYS	3.3
1	A	346	ARG	3.2
1	D	341	LEU	3.2
1	D	185	GLN	3.2
1	B	350	ASP	3.2
1	D	121	SER	3.1
1	B	18	LYS	3.1
1	B	17	PRO	3.0
1	B	362	THR	2.9
1	D	195	ILE	2.8
1	B	349	THR	2.8
1	D	184	ASP	2.8
1	B	347	ASN	2.7
1	D	319	LEU	2.7
1	D	147	ASP	2.7
1	C	121	SER	2.6
1	D	69	ILE	2.6
1	D	256	ALA	2.6
1	B	361	GLN	2.5
1	B	121	SER	2.5
1	D	22	THR	2.5
1	D	74	LEU	2.5
1	D	124	LEU	2.5
1	D	163	LEU	2.5
1	D	72	VAL	2.4
1	D	70	ILE	2.4
1	D	38	ILE	2.4
1	A	109	SER	2.4

Continued on next page...

Continued from previous page...

Mol	Chain	Res	Type	RSRZ
1	D	61	ILE	2.3
1	D	215	HIS	2.3
1	D	80	PRO	2.3
1	D	183	GLN	2.2
1	B	344	LYS	2.2
1	D	62	GLN	2.2
1	D	139	LEU	2.1
1	A	348	LEU	2.1
1	D	49	LYS	2.1

6.2 Non-standard residues in protein, DNA, RNA chains [i](#)

There are no non-standard protein/DNA/RNA residues in this entry.

6.3 Carbohydrates [i](#)

There are no oligosaccharides in this entry.

6.4 Ligands [i](#)

In the following table, the Atoms column lists the number of modelled atoms in the group and the number defined in the chemical component dictionary. The B-factors column lists the minimum, median, 95th percentile and maximum values of B factors of atoms in the group. The column labelled 'Q< 0.9' lists the number of atoms with occupancy less than 0.9.

Mol	Type	Chain	Res	Atoms	RSCC	RSR	B-factors(Å ²)	Q<0.9
4	HAR	D	401	13/13	0.76	0.22	41,49,58,59	13
4	HAR	B	405[B]	13/13	0.91	0.19	37,49,56,65	13
4	HAR	B	405[A]	13/13	0.91	0.19	31,48,55,66	13
3	GOL	B	404	6/6	0.92	0.10	21,32,38,45	0
3	GOL	B	403	6/6	0.92	0.10	24,32,36,37	1
4	HAR	A	405[A]	13/13	0.93	0.18	26,52,63,64	13
4	HAR	A	405[B]	13/13	0.93	0.18	36,53,64,64	13
3	GOL	A	403	6/6	0.93	0.10	20,28,41,43	0
3	GOL	A	404	6/6	0.93	0.09	23,26,34,50	0
3	GOL	C	403	6/6	0.93	0.09	28,35,40,43	0
4	HAR	C	405[A]	13/13	0.94	0.10	25,32,35,36	13
4	HAR	C	405[B]	13/13	0.94	0.10	22,32,35,35	13
3	GOL	C	404	6/6	0.94	0.07	33,41,46,46	0
2	MN	D	403	1/1	0.99	0.07	43,43,43,43	0

Continued on next page...

Continued from previous page...

Mol	Type	Chain	Res	Atoms	RSCC	RSR	B-factors(\AA^2)	Q<0.9
2	MN	D	402	1/1	0.99	0.05	38,38,38,38	0
2	MN	B	402	1/1	1.00	0.01	15,15,15,15	0
2	MN	C	401	1/1	1.00	0.01	21,21,21,21	0
2	MN	C	402	1/1	1.00	0.02	25,25,25,25	0
2	MN	A	401	1/1	1.00	0.01	14,14,14,14	0
2	MN	A	402	1/1	1.00	0.01	15,15,15,15	0
2	MN	B	401	1/1	1.00	0.02	14,14,14,14	0

6.5 Other polymers

There are no such residues in this entry.