



Full wwPDB X-ray Structure Validation Report ⓘ

Mar 8, 2026 – 09:58 AM UTC

PDB ID : 4W6J / pdb_00004w6j
Title : Crystal Structure of Full-Length Split GFP Mutant D117C Disulfide Dimer,
P 31 2 1 Space Group
Authors : Leibly, D.J.; Waldo, G.S.; Yeates, T.O.
Deposited on : 2014-08-20
Resolution : 1.70 Å(reported)

This is a Full wwPDB X-ray Structure Validation Report for a publicly released PDB entry.

We welcome your comments at validation@mail.wwpdb.org

A user guide is available at

<https://www.wwpdb.org/validation/2017/XrayValidationReportHelp>

with specific help available everywhere you see the ⓘ symbol.

The types of validation reports are described at

<http://www.wwpdb.org/validation/2017/FAQs#types>.

The following versions of software and data (see [references ⓘ](#)) were used in the production of this report:

MolProbity	:	4-5-2 with Phenix2.0
Mogul	:	2022.3.0, CSD as543be (2022)
Xtriage (Phenix)	:	2.0
EDS	:	3.0
Percentile statistics	:	20250101.v01 (using entries in the PDB archive January 1st 2025)
CCP4	:	9.0.010 (Gargrove)
Density-Fitness	:	1.0.12
Ideal geometry (proteins)	:	Engh & Huber (2001)
Ideal geometry (DNA, RNA)	:	Parkinson et al. (1996)
Validation Pipeline (wwPDB-VP)	:	2.49

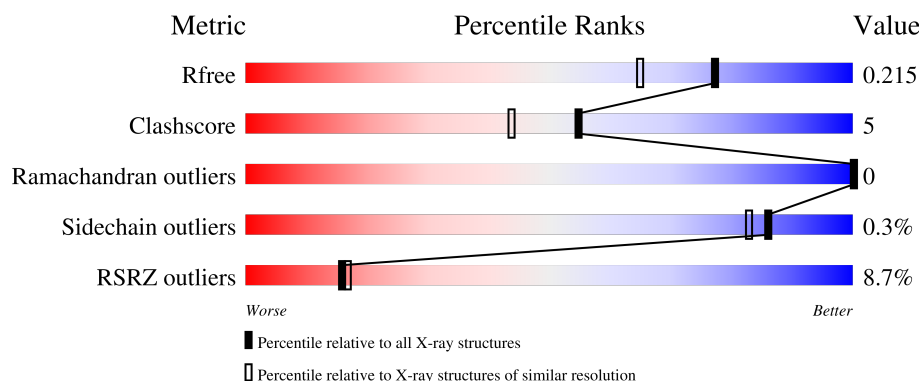
1 Overall quality at a glance

The following experimental techniques were used to determine the structure:

X-RAY DIFFRACTION

The reported resolution of this entry is 1.70 Å.

Percentile scores (ranging between 0-100) for global validation metrics of the entry are shown in the following graphic. The table shows the number of entries on which the scores are based.



Metric	Whole archive (#Entries)	Similar resolution (#Entries, resolution range(Å))
R_{free}	180053	5551 (1.70-1.70)
Clashscore	190562	5924 (1.70-1.70)
Ramachandran outliers	187476	5846 (1.70-1.70)
Sidechain outliers	187428	5846 (1.70-1.70)
RSRZ outliers	180081	5554 (1.70-1.70)

The table below summarises the geometric issues observed across the polymeric chains and their fit to the electron density. The red, orange, yellow and green segments of the lower bar indicate the fraction of residues that contain outliers for ≥ 3 , 2, 1 and 0 types of geometric quality criteria respectively. A grey segment represents the fraction of residues that are not modelled. The numeric value for each fraction is indicated below the corresponding segment, with a dot representing fractions $\leq 5\%$. The upper red bar (where present) indicates the fraction of residues that have poor fit to the electron density. The numeric value is given above the bar.

Mol	Chain	Length	Quality of chain
1	A	234	<div> <div>3%</div> <div>88%</div> <div>7%</div> <div>••</div> </div>
1	B	234	<div> <div>14%</div> <div>86%</div> <div>9%</div> <div>•</div> </div>

The following table lists non-polymeric compounds, carbohydrate monomers and non-standard residues in protein, DNA, RNA chains that are outliers for geometric or electron-density-fit criteria:

Mol	Type	Chain	Res	Chirality	Geometry	Clashes	Electron density
2	MPD	A	304	-	-	X	-

2 Entry composition [i](#)

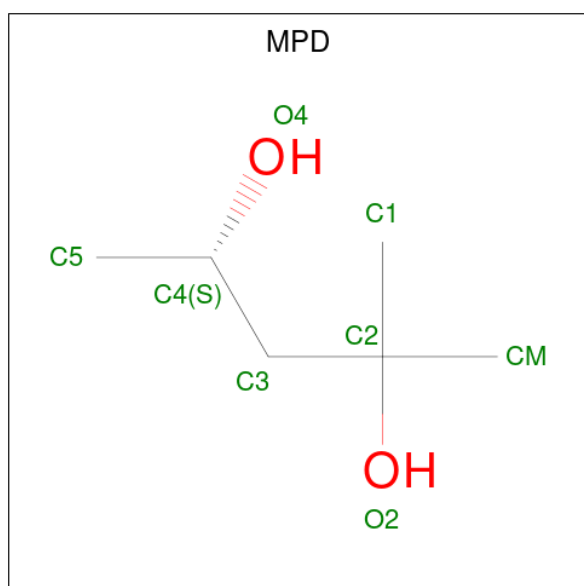
There are 4 unique types of molecules in this entry. The entry contains 3925 atoms, of which 0 are hydrogens and 0 are deuteriums.

In the tables below, the ZeroOcc column contains the number of atoms modelled with zero occupancy, the AltConf column contains the number of residues with at least one atom in alternate conformation and the Trace column contains the number of residues modelled with at most 2 atoms.

- Molecule 1 is a protein called fluorescent protein D117C.

Mol	Chain	Residues	Atoms					ZeroOcc	AltConf	Trace
1	A	227	Total	C	N	O	S	0	5	0
			1862	1183	319	355	5			
1	B	224	Total	C	N	O	S	0	1	0
			1805	1149	305	347	4			

- Molecule 2 is (4S)-2-METHYL-2,4-PENTANEDIOL (CCD ID: MPD) (formula: C₆H₁₄O₂).



Mol	Chain	Residues	Atoms			ZeroOcc	AltConf
2	A	1	Total	C	O	0	0
			8	6	2		
2	A	1	Total	C	O	0	0
			8	6	2		
2	A	1	Total	C	O	0	0
			8	6	2		
2	A	1	Total	C	O	0	0
			8	6	2		

Continued on next page...

Continued from previous page...

Mol	Chain	Residues	Atoms			ZeroOcc	AltConf
2	B	1	Total	C	O	0	0
			8	6	2		

- Molecule 3 is ACETATE ION (CCD ID: ACT) (formula: $C_2H_3O_2$).



Mol	Chain	Residues	Atoms			ZeroOcc	AltConf
3	A	1	Total	C	O	0	0
			4	2	2		
3	A	1	Total	C	O	0	0
			4	2	2		
3	B	1	Total	C	O	0	0
			4	2	2		

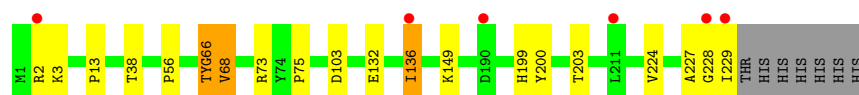
- Molecule 4 is water.

Mol	Chain	Residues	Atoms		ZeroOcc	AltConf
4	A	133	Total	O	0	0
			133	133		
4	B	73	Total	O	0	0
			73	73		

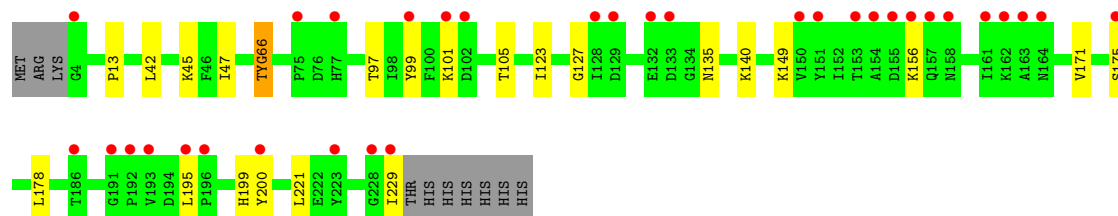
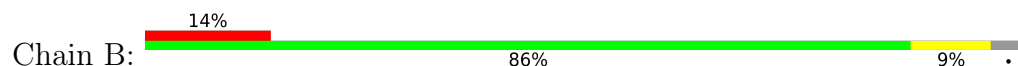
3 Residue-property plots [i](#)

These plots are drawn for all protein, RNA, DNA and oligosaccharide chains in the entry. The first graphic for a chain summarises the proportions of the various outlier classes displayed in the second graphic. The second graphic shows the sequence view annotated by issues in geometry and electron density. Residues are color-coded according to the number of geometric quality criteria for which they contain at least one outlier: green = 0, yellow = 1, orange = 2 and red = 3 or more. A red dot above a residue indicates a poor fit to the electron density ($RSRZ > 2$). Stretches of 2 or more consecutive residues without any outlier are shown as a green connector. Residues present in the sample, but not in the model, are shown in grey.

- Molecule 1: fluorescent protein D117C



- Molecule 1: fluorescent protein D117C



4 Data and refinement statistics

Property	Value	Source
Space group	P 31 2 1	Depositor
Cell constants a, b, c, α , β , γ	113.74Å 113.74Å 82.46Å 90.00° 90.00° 120.00°	Depositor
Resolution (Å)	98.50 – 1.70 98.50 – 1.70	Depositor EDS
% Data completeness (in resolution range)	99.5 (98.50-1.70) 99.4 (98.50-1.70)	Depositor EDS
R_{merge}	(Not available)	Depositor
R_{sym}	0.05	Depositor
$\langle I/\sigma(I) \rangle$ ¹	1.60 (at 1.70Å)	Xtriage
Refinement program	PHENIX (PHENIX.REFINE: DEV_1555)	Depositor
R, R_{free}	0.189 , 0.212 0.195 , 0.215	Depositor DCC
R_{free} test set	6726 reflections (10.00%)	wwPDB-VP
Wilson B-factor (Å ²)	25.2	Xtriage
Anisotropy	0.355	Xtriage
Bulk solvent k_{sol} (e/Å ³), B_{sol} (Å ²)	0.33 , 36.2	EDS
L-test for twinning ²	$\langle L \rangle = 0.48$, $\langle L^2 \rangle = 0.32$	Xtriage
Estimated twinning fraction	0.029 for -h,-k,l	Xtriage
F_o, F_c correlation	0.96	EDS
Total number of atoms	3925	wwPDB-VP
Average B, all atoms (Å ²)	33.0	wwPDB-VP

Xtriage's analysis on translational NCS is as follows: *The largest off-origin peak in the Patterson function is 4.67% of the height of the origin peak. No significant pseudotranslation is detected.*

¹Intensities estimated from amplitudes.

²Theoretical values of $\langle |L| \rangle$, $\langle L^2 \rangle$ for acentric reflections are 0.5, 0.333 respectively for untwinned datasets, and 0.375, 0.2 for perfectly twinned datasets.

5 Model quality [i](#)

5.1 Standard geometry [i](#)

Bond lengths and bond angles in the following residue types are not validated in this section: MPD, CRO, ACT

The Z score for a bond length (or angle) is the number of standard deviations the observed value is removed from the expected value. A bond length (or angle) with $|Z| > 5$ is considered an outlier worth inspection. RMSZ is the root-mean-square of all Z scores of the bond lengths (or angles).

Mol	Chain	Bond lengths		Bond angles	
		RMSZ	$\# Z > 5$	RMSZ	$\# Z > 5$
1	A	0.59	4/1879 (0.2%)	0.75	2/2541 (0.1%)
1	B	0.49	0/1822	0.75	0/2464
All	All	0.54	4/3701 (0.1%)	0.75	2/5005 (0.0%)

All (4) bond length outliers are listed below:

Mol	Chain	Res	Type	Atoms	Z	Observed(Å)	Ideal(Å)
1	A	3	LYS	C-N	-6.65	1.24	1.33
1	A	227	ALA	C-O	-6.32	1.17	1.24
1	A	103	ASP	C-O	-5.68	1.20	1.24
1	A	68	VAL	N-CA	-5.44	1.35	1.46

All (2) bond angle outliers are listed below:

Mol	Chain	Res	Type	Atoms	Z	Observed(°)	Ideal(°)
1	A	136	ILE	N-CA-C	6.73	117.71	111.45
1	A	228	GLY	O-C-N	-5.22	116.23	122.34

There are no chirality outliers.

There are no planarity outliers.

5.2 Too-close contacts [i](#)

In the following table, the Non-H and H(model) columns list the number of non-hydrogen atoms and hydrogen atoms in the chain respectively. The H(added) column lists the number of hydrogen atoms added and optimized by MolProbity. The Clashes column lists the number of clashes within the asymmetric unit, whereas Symm-Clashes lists symmetry-related clashes.

Mol	Chain	Non-H	H(model)	H(added)	Clashes	Symm-Clashes
1	A	1862	0	1814	15	0
1	B	1805	0	1750	14	0
2	A	32	0	56	8	0
2	B	8	0	14	1	0
3	A	8	0	6	0	0
3	B	4	0	3	0	0
4	A	133	0	0	3	0
4	B	73	0	0	0	0
All	All	3925	0	3643	35	0

The all-atom clashscore is defined as the number of clashes found per 1000 atoms (including hydrogen atoms). The all-atom clashscore for this structure is 5.

All (35) close contacts within the same asymmetric unit are listed below, sorted by their clash magnitude.

Atom-1	Atom-2	Interatomic distance (Å)	Clash overlap (Å)
2:A:304:MPD:H53	2:A:304:MPD:HM1	1.34	1.06
2:A:304:MPD:H53	2:A:304:MPD:CM	2.15	0.75
1:A:56:PRO:HD3	1:A:136:ILE:O	1.92	0.69
1:B:101:LYS:HG3	1:B:178:LEU:HB2	1.75	0.66
2:B:301:MPD:O4	2:B:301:MPD:HM1	1.99	0.62
1:A:13:PRO:HD2	2:A:304:MPD:H51	1.85	0.57
2:A:304:MPD:H31	1:B:13:PRO:HG3	1.86	0.57
2:A:302:MPD:O4	2:A:302:MPD:H12	2.05	0.57
2:A:304:MPD:HM1	2:A:304:MPD:C5	2.20	0.55
1:B:171:VAL:HB	1:B:175:SER:O	2.07	0.55
1:B:135:ASN:HD22	1:B:140:LYS:HD2	1.74	0.52
1:B:199:HIS:HA	1:B:229:ILE:HB	1.90	0.52
1:A:68:VAL:O	1:A:68:VAL:HG23	2.10	0.50
1:A:66:CRO:HD1	1:A:66:CRO:N2	2.26	0.49
1:A:136:ILE:HD12	1:A:136:ILE:N	2.26	0.49
1:B:97:THR:CG2	1:B:99:TYR:CE2	2.96	0.48
2:A:304:MPD:CM	2:A:304:MPD:C5	2.85	0.48
1:A:13:PRO:HD2	2:A:304:MPD:C5	2.46	0.46
1:B:97:THR:HG21	1:B:99:TYR:CE2	2.50	0.46
1:A:149:LYS:HE2	1:A:200:TYR:CD2	2.51	0.46
1:B:149:LYS:HE2	1:B:200:TYR:CE1	2.51	0.45
1:B:156:LYS:HD2	1:B:195:LEU:CD1	2.48	0.43
1:B:105:THR:O	1:B:127:GLY:HA2	2.19	0.43
1:A:2:ARG:NH1	4:A:477:HOH:O	2.44	0.42
1:A:132:GLU:OE2	4:A:503:HOH:O	2.22	0.42
1:B:66:CRO:N2	1:B:66:CRO:HD1	2.35	0.42

Continued on next page...

Continued from previous page...

Atom-1	Atom-2	Interatomic distance (Å)	Clash overlap (Å)
1:A:38:THR:O	1:A:73[B]:ARG:HD2	2.19	0.42
1:A:73[A]:ARG:NH2	1:A:75:PRO:HG3	2.36	0.41
1:B:45:LYS:HE2	1:B:47:ILE:HD11	2.02	0.41
1:B:97:THR:HG22	1:B:99:TYR:CE2	2.55	0.41
1:A:199:HIS:HB3	1:A:229:ILE:HD13	2.01	0.41
1:A:203[B]:THR:HG23	1:A:224:VAL:HG22	2.03	0.41
1:B:42:LEU:O	1:B:221:LEU:HD12	2.21	0.41
1:A:136:ILE:HD12	1:A:136:ILE:H	1.86	0.41
1:A:73[B]:ARG:NH1	4:A:525:HOH:O	2.54	0.40

There are no symmetry-related clashes.

5.3 Torsion angles [i](#)

5.3.1 Protein backbone [i](#)

In the following table, the Percentiles column shows the percent Ramachandran outliers of the chain as a percentile score with respect to all X-ray entries followed by that with respect to entries of similar resolution.

The Analysed column shows the number of residues for which the backbone conformation was analysed, and the total number of residues.

Mol	Chain	Analysed	Favoured	Allowed	Outliers	Percentiles	
1	A	227/234 (97%)	225 (99%)	2 (1%)	0	100	100
1	B	220/234 (94%)	217 (99%)	3 (1%)	0	100	100
All	All	447/468 (96%)	442 (99%)	5 (1%)	0	100	100

There are no Ramachandran outliers to report.

5.3.2 Protein sidechains [i](#)

In the following table, the Percentiles column shows the percent sidechain outliers of the chain as a percentile score with respect to all X-ray entries followed by that with respect to entries of similar resolution.

The Analysed column shows the number of residues for which the sidechain conformation was analysed, and the total number of residues.

Mol	Chain	Analysed	Rotameric	Outliers	Percentiles	
1	A	200/203 (98%)	200 (100%)	0	100	100
1	B	194/203 (96%)	193 (100%)	1 (0%)	81	76
All	All	394/406 (97%)	393 (100%)	1 (0%)	86	83

All (1) residues with a non-rotameric sidechain are listed below:

Mol	Chain	Res	Type
1	B	123	ILE

Sometimes sidechains can be flipped to improve hydrogen bonding and reduce clashes. All (3) such sidechains are listed below:

Mol	Chain	Res	Type
1	B	25	HIS
1	B	135	ASN
1	B	146	ASN

5.3.3 RNA ⓘ

There are no RNA molecules in this entry.

5.4 Non-standard residues in protein, DNA, RNA chains ⓘ

2 non-standard protein/DNA/RNA residues are modelled in this entry.

In the following table, the Counts columns list the number of bonds (or angles) for which Mogul statistics could be retrieved, the number of bonds (or angles) that are observed in the model and the number of bonds (or angles) that are defined in the Chemical Component Dictionary. The Link column lists molecule types, if any, to which the group is linked. The Z score for a bond length (or angle) is the number of standard deviations the observed value is removed from the expected value. A bond length (or angle) with $|Z| > 2$ is considered an outlier worth inspection. RMSZ is the root-mean-square of all Z scores of the bond lengths (or angles).

Mol	Type	Chain	Res	Link	Bond lengths			Bond angles		
					Counts	RMSZ	$\# Z > 2$	Counts	RMSZ	$\# Z > 2$
1	CRO	B	66	1	22,23,24	3.14	5 (22%)	30,32,34	2.56	8 (26%)
1	CRO	A	66	1	22,23,24	3.03	6 (27%)	30,32,34	2.54	8 (26%)

In the following table, the Chirals column lists the number of chiral outliers, the number of chiral centers analysed, the number of these observed in the model and the number defined in the Chemical Component Dictionary. Similar counts are reported in the Torsion and Rings columns.

'-' means no outliers of that kind were identified.

Mol	Type	Chain	Res	Link	Chirals	Torsions	Rings
1	CRO	B	66	1	-	0/12/31/32	0/2/2/2
1	CRO	A	66	1	-	0/12/31/32	0/2/2/2

All (11) bond length outliers are listed below:

Mol	Chain	Res	Type	Atoms	Z	Observed(Å)	Ideal(Å)
1	B	66	CRO	CB2-CA2	12.70	1.47	1.35
1	A	66	CRO	CB2-CA2	11.74	1.46	1.35
1	A	66	CRO	C2-N3	-4.42	1.29	1.40
1	A	66	CRO	CA2-C2	-3.84	1.44	1.48
1	B	66	CRO	C2-N3	-3.67	1.31	1.40
1	B	66	CRO	C1-N2	3.41	1.37	1.32
1	B	66	CRO	CA2-C2	-2.52	1.45	1.48
1	A	66	CRO	CA2-N2	-2.35	1.33	1.38
1	B	66	CRO	CA2-N2	-2.32	1.33	1.38
1	A	66	CRO	CA3-N3	-2.11	1.43	1.47
1	A	66	CRO	C1-N2	2.09	1.35	1.32

All (16) bond angle outliers are listed below:

Mol	Chain	Res	Type	Atoms	Z	Observed(°)	Ideal(°)
1	B	66	CRO	O2-C2-CA2	-9.61	124.89	131.02
1	A	66	CRO	O2-C2-CA2	-9.59	124.90	131.02
1	B	66	CRO	CA2-C2-N3	5.82	108.39	103.50
1	A	66	CRO	CA2-C2-N3	5.45	108.08	103.50
1	B	66	CRO	C2-CA2-N2	-3.77	106.25	108.95
1	B	66	CRO	O3-C3-CA3	-3.56	109.45	125.47
1	A	66	CRO	C2-CA2-N2	-3.29	106.59	108.95
1	A	66	CRO	O3-C3-CA3	-3.20	111.07	125.47
1	B	66	CRO	CB2-CA2-C2	3.00	125.99	122.36
1	A	66	CRO	CB2-CA2-C2	2.90	125.87	122.36
1	A	66	CRO	C3-CA3-N3	2.85	118.92	112.43
1	A	66	CRO	CG2-CB2-CA2	-2.83	126.50	129.87
1	B	66	CRO	CA1-C1-N3	-2.49	121.74	124.69
1	B	66	CRO	C2-N3-C1	-2.31	107.00	108.07
1	A	66	CRO	CA1-C1-N3	-2.29	121.98	124.69
1	B	66	CRO	CG2-CB2-CA2	-2.08	127.39	129.87

There are no chirality outliers.

There are no torsion outliers.

There are no ring outliers.

2 monomers are involved in 2 short contacts:

Mol	Chain	Res	Type	Clashes	Symm-Clashes
1	B	66	CRO	1	0
1	A	66	CRO	1	0

5.5 Carbohydrates [i](#)

There are no oligosaccharides in this entry.

5.6 Ligand geometry [i](#)

8 ligands are modelled in this entry.

In the following table, the Counts columns list the number of bonds (or angles) for which Mogul statistics could be retrieved, the number of bonds (or angles) that are observed in the model and the number of bonds (or angles) that are defined in the Chemical Component Dictionary. The Link column lists molecule types, if any, to which the group is linked. The Z score for a bond length (or angle) is the number of standard deviations the observed value is removed from the expected value. A bond length (or angle) with $|Z| > 2$ is considered an outlier worth inspection. RMSZ is the root-mean-square of all Z scores of the bond lengths (or angles).

Mol	Type	Chain	Res	Link	Bond lengths			Bond angles		
					Counts	RMSZ	$\# Z > 2$	Counts	RMSZ	$\# Z > 2$
2	MPD	B	301	-	7,7,7	0.83	0	9,10,10	0.49	0
2	MPD	A	302	-	7,7,7	0.94	0	9,10,10	0.91	0
2	MPD	A	304	-	7,7,7	0.60	0	9,10,10	0.88	0
2	MPD	A	301	-	7,7,7	0.94	0	9,10,10	0.67	0
2	MPD	A	303	-	7,7,7	1.01	1 (14%)	9,10,10	0.53	0
3	ACT	B	302	-	3,3,3	1.09	0	3,3,3	0.54	0
3	ACT	A	305	-	3,3,3	0.96	0	3,3,3	0.76	0
3	ACT	A	306	-	3,3,3	0.78	0	3,3,3	1.03	0

In the following table, the Chirals column lists the number of chiral outliers, the number of chiral centers analysed, the number of these observed in the model and the number defined in the Chemical Component Dictionary. Similar counts are reported in the Torsion and Rings columns. '-' means no outliers of that kind were identified.

Mol	Type	Chain	Res	Link	Chirals	Torsions	Rings
2	MPD	B	301	-	-	2/5/5/5	-
2	MPD	A	302	-	-	1/5/5/5	-
2	MPD	A	304	-	-	1/5/5/5	-
2	MPD	A	301	-	-	0/5/5/5	-
2	MPD	A	303	-	-	0/5/5/5	-

All (1) bond length outliers are listed below:

Mol	Chain	Res	Type	Atoms	Z	Observed(Å)	Ideal(Å)
2	A	303	MPD	O2-C2	-2.18	1.39	1.44

There are no bond angle outliers.

There are no chirality outliers.

All (4) torsion outliers are listed below:

Mol	Chain	Res	Type	Atoms
2	A	304	MPD	C2-C3-C4-C5
2	B	301	MPD	C2-C3-C4-O4
2	B	301	MPD	C2-C3-C4-C5
2	A	302	MPD	C2-C3-C4-O4

There are no ring outliers.

3 monomers are involved in 9 short contacts:

Mol	Chain	Res	Type	Clashes	Symm-Clashes
2	B	301	MPD	1	0
2	A	302	MPD	1	0
2	A	304	MPD	7	0

5.7 Other polymers [i](#)

There are no such residues in this entry.

5.8 Polymer linkage issues [i](#)

There are no chain breaks in this entry.

6 Fit of model and data

6.1 Protein, DNA and RNA chains

In the following table, the column labelled ‘#RSRZ > 2’ contains the number (and percentage) of RSRZ outliers, followed by percent RSRZ outliers for the chain as percentile scores relative to all X-ray entries and entries of similar resolution. The OWAB column contains the minimum, median, 95th percentile and maximum values of the occupancy-weighted average B-factor per residue. The column labelled ‘Q < 0.9’ lists the number of (and percentage) of residues with an average occupancy less than 0.9.

Mol	Chain	Analysed	<RSRZ>	#RSRZ>2	OWAB(Å ²)	Q<0.9
1	A	226/234 (96%)	0.01	6 (2%) 56 60	10, 26, 45, 66	5 (2%)
1	B	223/234 (95%)	0.80	33 (14%) 5 5	14, 37, 64, 76	1 (0%)
All	All	449/468 (95%)	0.40	39 (8%) 16 17	10, 30, 59, 76	6 (1%)

All (39) RSRZ outliers are listed below:

Mol	Chain	Res	Type	RSRZ
1	B	229	ILE	5.4
1	B	99	TYR	5.2
1	B	4	GLY	4.6
1	A	211	LEU	4.3
1	B	157	GLN	4.3
1	A	190	ASP	4.3
1	B	151	TYR	4.3
1	B	164	ASN	4.0
1	B	192	PRO	3.7
1	B	175	SER	3.7
1	B	223	TYR	3.7
1	B	191	GLY	3.5
1	B	195	LEU	3.4
1	B	193	VAL	3.4
1	A	228	GLY	3.2
1	B	155	ASP	3.1
1	A	229	ILE	3.1
1	B	128	ILE	3.0
1	B	156	LYS	2.9
1	B	132	GLU	2.9
1	A	136	ILE	2.8
1	B	228	GLY	2.7
1	B	153	THR	2.6
1	B	129	ASP	2.6

Continued on next page...

Continued from previous page...

Mol	Chain	Res	Type	RSRZ
1	B	133	ASP	2.5
1	B	162	LYS	2.3
1	B	163	ALA	2.3
1	B	154	ALA	2.3
1	B	196	PRO	2.2
1	A	2	ARG	2.2
1	B	186	THR	2.2
1	B	102	ASP	2.1
1	B	101	LYS	2.1
1	B	158	ASN	2.1
1	B	161	ILE	2.1
1	B	150	VAL	2.1
1	B	77	HIS	2.1
1	B	200	TYR	2.1
1	B	75	PRO	2.0

6.2 Non-standard residues in protein, DNA, RNA chains [i](#)

In the following table, the Atoms column lists the number of modelled atoms in the group and the number defined in the chemical component dictionary. The B-factors column lists the minimum, median, 95th percentile and maximum values of B factors of atoms in the group. The column labelled 'Q< 0.9' lists the number of atoms with occupancy less than 0.9.

Mol	Type	Chain	Res	Atoms	RSCC	RSR	B-factors(Å ²)	Q<0.9
1	CRO	B	66	22/23	0.94	0.10	25,35,43,60	0
1	CRO	A	66	22/23	0.95	0.09	20,25,30,39	0

6.3 Carbohydrates [i](#)

There are no oligosaccharides in this entry.

6.4 Ligands [i](#)

In the following table, the Atoms column lists the number of modelled atoms in the group and the number defined in the chemical component dictionary. The B-factors column lists the minimum, median, 95th percentile and maximum values of B factors of atoms in the group. The column labelled 'Q< 0.9' lists the number of atoms with occupancy less than 0.9.

Mol	Type	Chain	Res	Atoms	RSCC	RSR	B-factors(Å ²)	Q<0.9
3	ACT	B	302	4/4	0.76	0.24	68,69,70,70	0

Continued on next page...

Continued from previous page...

Mol	Type	Chain	Res	Atoms	RSCC	RSR	B-factors(\AA^2)	Q<0.9
3	ACT	A	305	4/4	0.78	0.18	51,55,55,56	0
2	MPD	A	304	8/8	0.82	0.15	33,40,44,44	0
3	ACT	A	306	4/4	0.87	0.16	51,54,56,60	0
2	MPD	A	301	8/8	0.88	0.12	26,32,35,35	0
2	MPD	A	302	8/8	0.88	0.15	30,41,46,54	0
2	MPD	B	301	8/8	0.90	0.15	38,42,53,56	0
2	MPD	A	303	8/8	0.91	0.14	36,40,42,47	0

6.5 Other polymers [i](#)

There are no such residues in this entry.