



Full wwPDB X-ray Structure Validation Report ⓘ

Mar 9, 2026 – 02:08 AM UTC

PDB ID : 5AIB / pdb_00005aib
Title : ligand complex structure of soluble epoxide hydrolase
Authors : Oster, L.; Tapani, S.; Xue, Y.; Kack, H.
Deposited on : 2015-02-12
Resolution : 1.95 Å(reported)

This is a Full wwPDB X-ray Structure Validation Report for a publicly released PDB entry.

We welcome your comments at validation@mail.wwpdb.org

A user guide is available at

<https://www.wwpdb.org/validation/2017/XrayValidationReportHelp>

with specific help available everywhere you see the ⓘ symbol.

The types of validation reports are described at

<http://www.wwpdb.org/validation/2017/FAQs#types>.

The following versions of software and data (see [references ⓘ](#)) were used in the production of this report:

MolProbity	:	4-5-2 with Phenix2.0
Mogul	:	2022.3.0, CSD as543be (2022)
Xtriage (Phenix)	:	2.0
EDS	:	3.0
Percentile statistics	:	20250101.v01 (using entries in the PDB archive January 1st 2025)
CCP4	:	9.0.010 (Gargrove)
Density-Fitness	:	1.0.12
Ideal geometry (proteins)	:	Engh & Huber (2001)
Ideal geometry (DNA, RNA)	:	Parkinson et al. (1996)
Validation Pipeline (wwPDB-VP)	:	2.49

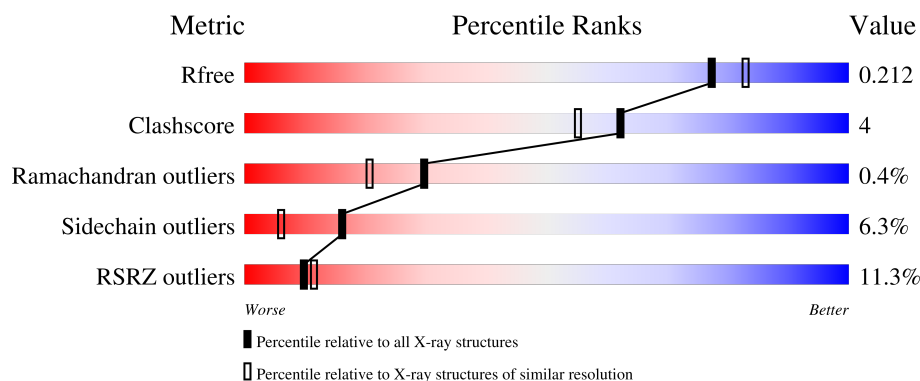
1 Overall quality at a glance

The following experimental techniques were used to determine the structure:

X-RAY DIFFRACTION

The reported resolution of this entry is 1.95 Å.

Percentile scores (ranging between 0-100) for global validation metrics of the entry are shown in the following graphic. The table shows the number of entries on which the scores are based.



Metric	Whole archive (#Entries)	Similar resolution (#Entries, resolution range(Å))
R_{free}	180053	3494 (1.96-1.96)
Clashscore	190562	3612 (1.96-1.96)
Ramachandran outliers	187476	3587 (1.96-1.96)
Sidechain outliers	187428	3587 (1.96-1.96)
RSRZ outliers	180081	3495 (1.96-1.96)

The table below summarises the geometric issues observed across the polymeric chains and their fit to the electron density. The red, orange, yellow and green segments of the lower bar indicate the fraction of residues that contain outliers for ≥ 3 , 2, 1 and 0 types of geometric quality criteria respectively. A grey segment represents the fraction of residues that are not modelled. The numeric value for each fraction is indicated below the corresponding segment, with a dot representing fractions $\leq 5\%$. The upper red bar (where present) indicates the fraction of residues that have poor fit to the electron density. The numeric value is given above the bar.

Mol	Chain	Length	Quality of chain
1	A	549	<div> <div>11%</div> <div>86%</div> <div>12%</div> <div>..</div> </div>

2 Entry composition [i](#)

There are 4 unique types of molecules in this entry. The entry contains 4818 atoms, of which 0 are hydrogens and 0 are deuteriums.

In the tables below, the ZeroOcc column contains the number of atoms modelled with zero occupancy, the AltConf column contains the number of residues with at least one atom in alternate conformation and the Trace column contains the number of residues modelled with at most 2 atoms.

- Molecule 1 is a protein called BIFUNCTIONAL EPOXIDE HYDROLASE 2.

Mol	Chain	Residues	Atoms					ZeroOcc	AltConf	Trace
			Total	C	N	O	S			
1	A	547	4331	2775	730	790	36	0	0	0

There is a discrepancy between the modelled and reference sequences:

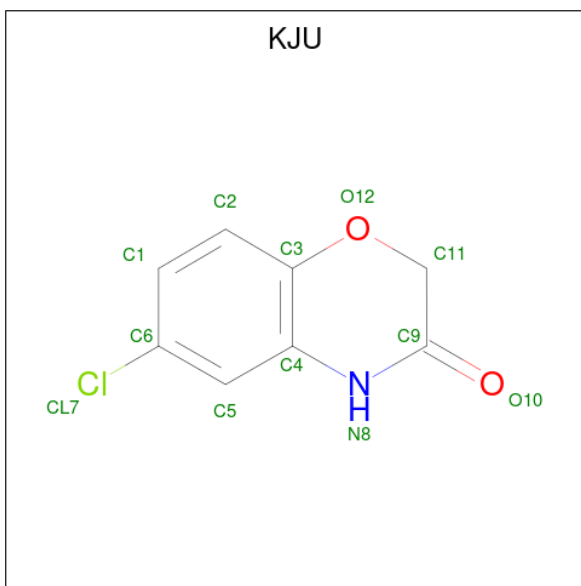
Chain	Residue	Modelled	Actual	Comment	Reference
A	0	GLY	-	expression tag	UNP P34913

- Molecule 2 is SULFATE ION (CCD ID: SO4) (formula: O₄S).



Mol	Chain	Residues	Atoms			ZeroOcc	AltConf
			Total	O	S		
2	A	1	5	4	1	0	0
2	A	1	5	4	1	0	0
2	A	1	5	4	1	0	0

- Molecule 3 is 6-chloro-2H-1,4-benzoxazin-3(4H)-one (CCD ID: KJU) (formula: $C_8H_6ClNO_2$).



Mol	Chain	Residues	Atoms					ZeroOcc	AltConf
3	A	1	Total	C	Cl	N	O	0	0
			12	8	1	1	2		

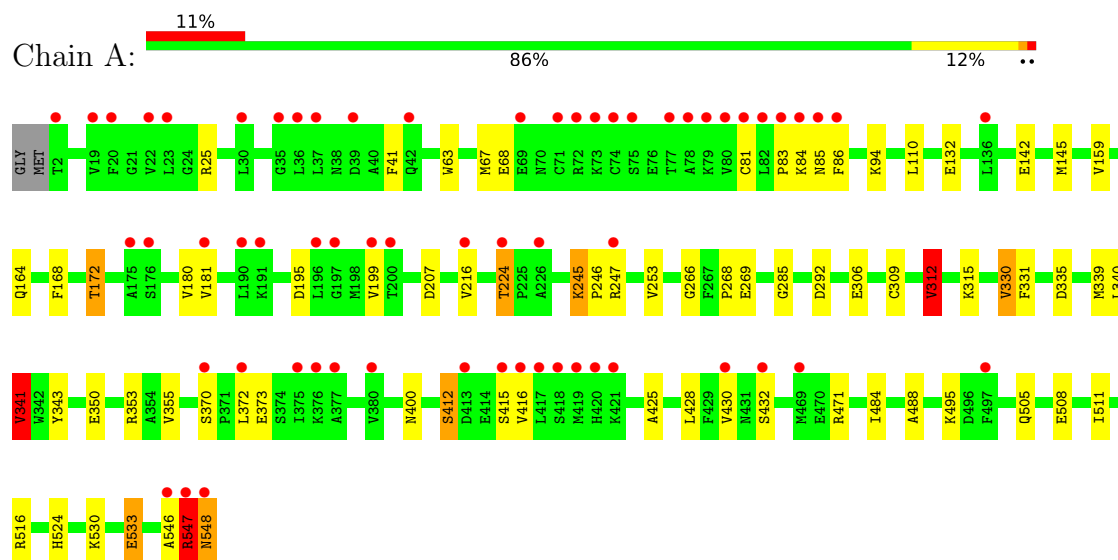
- Molecule 4 is water.

Mol	Chain	Residues	Atoms		ZeroOcc	AltConf
4	A	460	Total	O	0	0
			460	460		

3 Residue-property plots [i](#)

These plots are drawn for all protein, RNA, DNA and oligosaccharide chains in the entry. The first graphic for a chain summarises the proportions of the various outlier classes displayed in the second graphic. The second graphic shows the sequence view annotated by issues in geometry and electron density. Residues are color-coded according to the number of geometric quality criteria for which they contain at least one outlier: green = 0, yellow = 1, orange = 2 and red = 3 or more. A red dot above a residue indicates a poor fit to the electron density ($RSRZ > 2$). Stretches of 2 or more consecutive residues without any outlier are shown as a green connector. Residues present in the sample, but not in the model, are shown in grey.

• Molecule 1: BIFUNCTIONAL EPOXIDE HYDROLASE 2



4 Data and refinement statistics

Property	Value	Source
Space group	P 65 2 2	Depositor
Cell constants a, b, c, α , β , γ	92.98Å 92.98Å 244.47Å 90.00° 90.00° 120.00°	Depositor
Resolution (Å)	80.53 – 1.95 80.53 – 1.95	Depositor EDS
% Data completeness (in resolution range)	99.4 (80.53-1.95) 99.4 (80.53-1.95)	Depositor EDS
R_{merge}	0.08	Depositor
R_{sym}	(Not available)	Depositor
$\langle I/\sigma(I) \rangle$ ¹	2.60 (at 1.95Å)	Xtriage
Refinement program	BUSTER 2.11.1	Depositor
R, R_{free}	0.204 , 0.243 (Not available) , 0.212	Depositor DCC
R_{free} test set	2338 reflections (5.06%)	wwPDB-VP
Wilson B-factor (Å ²)	23.7	Xtriage
Anisotropy	0.209	Xtriage
Bulk solvent k_{sol} (e/Å ³), B_{sol} (Å ²)	0.34 , 54.6	EDS
L-test for twinning ²	$\langle L \rangle = 0.48$, $\langle L^2 \rangle = 0.31$	Xtriage
Estimated twinning fraction	No twinning to report.	Xtriage
F_o, F_c correlation	0.95	EDS
Total number of atoms	4818	wwPDB-VP
Average B, all atoms (Å ²)	33.0	wwPDB-VP

Xtriage's analysis on translational NCS is as follows: *The largest off-origin peak in the Patterson function is 4.26% of the height of the origin peak. No significant pseudotranslation is detected.*

¹Intensities estimated from amplitudes.

²Theoretical values of $\langle |L| \rangle$, $\langle L^2 \rangle$ for acentric reflections are 0.5, 0.333 respectively for untwinned datasets, and 0.375, 0.2 for perfectly twinned datasets.

5 Model quality

5.1 Standard geometry

Bond lengths and bond angles in the following residue types are not validated in this section: SO4, KJU

The Z score for a bond length (or angle) is the number of standard deviations the observed value is removed from the expected value. A bond length (or angle) with $|Z| > 5$ is considered an outlier worth inspection. RMSZ is the root-mean-square of all Z scores of the bond lengths (or angles).

Mol	Chain	Bond lengths		Bond angles	
		RMSZ	$\# Z > 5$	RMSZ	$\# Z > 5$
1	A	0.83	0/4436	1.27	15/6011 (0.2%)

There are no bond length outliers.

All (15) bond angle outliers are listed below:

Mol	Chain	Res	Type	Atoms	Z	Observed(°)	Ideal(°)
1	A	269	GLU	N-CA-C	7.74	120.20	109.29
1	A	330	VAL	N-CA-CB	7.45	120.47	110.26
1	A	292	ASP	N-CA-C	-7.19	97.02	108.73
1	A	505	GLN	N-CA-C	6.18	118.82	111.71
1	A	340	LEU	CD1-CG-CD2	6.00	123.99	110.80
1	A	312	VAL	N-CA-CB	5.84	119.34	110.58
1	A	180	VAL	N-CA-C	5.79	116.27	108.17
1	A	415	SER	N-CA-C	5.66	118.27	110.35
1	A	400	ASN	CA-CB-CG	5.47	118.07	112.60
1	A	341	VAL	N-CA-CB	-5.40	103.19	110.54
1	A	516	ARG	CA-C-N	5.28	126.48	121.46
1	A	516	ARG	C-N-CA	5.28	126.48	121.46
1	A	547	ARG	CA-C-N	5.21	131.07	121.70
1	A	547	ARG	C-N-CA	5.21	131.07	121.70
1	A	224	THR	CB-CA-C	5.14	117.55	109.27

There are no chirality outliers.

There are no planarity outliers.

5.2 Too-close contacts

In the following table, the Non-H and H(model) columns list the number of non-hydrogen atoms and hydrogen atoms in the chain respectively. The H(added) column lists the number of hydrogen

atoms added and optimized by MolProbity. The Clashes column lists the number of clashes within the asymmetric unit, whereas Symm-Clashes lists symmetry-related clashes.

Mol	Chain	Non-H	H(model)	H(added)	Clashes	Symm-Clashes
1	A	4331	0	4335	35	0
2	A	15	0	0	0	0
3	A	12	0	6	3	0
4	A	460	0	0	7	0
All	All	4818	0	4341	36	0

The all-atom clashscore is defined as the number of clashes found per 1000 atoms (including hydrogen atoms). The all-atom clashscore for this structure is 4.

All (36) close contacts within the same asymmetric unit are listed below, sorted by their clash magnitude.

Atom-1	Atom-2	Interatomic distance (Å)	Clash overlap (Å)
1:A:524:HIS:HB2	3:A:1552:KJU:H11A	1.30	1.10
1:A:41:PHE:HA	1:A:67:MET:HE1	1.28	1.10
1:A:331:PHE:HB3	1:A:341:VAL:HG22	1.51	0.92
1:A:524:HIS:CB	3:A:1552:KJU:H11A	2.07	0.83
1:A:530:LYS:HB3	1:A:533:GLU:HG2	1.64	0.78
1:A:41:PHE:HA	1:A:67:MET:CE	2.15	0.74
1:A:339:MET:HE3	1:A:339:MET:HA	1.69	0.74
3:A:1552:KJU:H11	4:A:2412:HOH:O	1.88	0.72
1:A:341:VAL:HG13	1:A:355:VAL:HG23	1.72	0.71
1:A:530:LYS:HB3	1:A:533:GLU:CG	2.26	0.66
1:A:63:TRP:CZ2	1:A:67:MET:HE3	2.31	0.65
1:A:341:VAL:HG13	1:A:355:VAL:CG2	2.27	0.64
1:A:546:ALA:O	1:A:547:ARG:HB2	1.98	0.63
1:A:199:VAL:HG11	1:A:216:VAL:HG21	1.80	0.62
1:A:309:CYS:SG	1:A:312:VAL:HG13	2.42	0.59
1:A:370:SER:HB2	1:A:373:GLU:HG3	1.84	0.58
1:A:547:ARG:O	1:A:548:ASN:HB2	2.03	0.58
1:A:41:PHE:CA	1:A:67:MET:HE1	2.19	0.56
1:A:245:LYS:HE3	4:A:2231:HOH:O	2.06	0.56
1:A:168:PHE:O	1:A:172:THR:HG23	2.10	0.52
1:A:266:GLY:HA3	1:A:335:ASP:HB3	1.93	0.51
1:A:142:GLU:HA	1:A:145:MET:HE3	1.94	0.50
1:A:484:ILE:HB	1:A:511:ILE:HG12	1.93	0.50
1:A:83:PRO:HG2	1:A:86:PHE:HB2	1.93	0.50
1:A:63:TRP:HZ2	1:A:67:MET:HE3	1.76	0.48
1:A:412:SER:OG	1:A:495:LYS:HB3	2.15	0.47
1:A:245:LYS:HB2	1:A:246:PRO:HD2	1.99	0.44

Continued on next page...

Continued from previous page...

Atom-1	Atom-2	Interatomic distance (Å)	Clash overlap (Å)
1:A:355:VAL:O	1:A:488:ALA:HA	2.17	0.44
1:A:25:ARG:NH2	4:A:2013:HOH:O	2.49	0.44
1:A:425:ALA:HB1	1:A:430:VAL:HG21	1.98	0.44
1:A:247:ARG:HG2	4:A:2232:HOH:O	2.18	0.44
1:A:339:MET:HE2	1:A:343:TYR:CE2	2.53	0.43
1:A:432:SER:OG	4:A:2347:HOH:O	2.13	0.43
1:A:285:GLY:O	1:A:548:ASN:ND2	2.52	0.42
1:A:315:LYS:HG3	4:A:2282:HOH:O	2.19	0.42
1:A:164:GLN:NE2	4:A:2050:HOH:O	2.54	0.41

There are no symmetry-related clashes.

5.3 Torsion angles [i](#)

5.3.1 Protein backbone [i](#)

In the following table, the Percentiles column shows the percent Ramachandran outliers of the chain as a percentile score with respect to all X-ray entries followed by that with respect to entries of similar resolution.

The Analysed column shows the number of residues for which the backbone conformation was analysed, and the total number of residues.

Mol	Chain	Analysed	Favoured	Allowed	Outliers	Percentiles
1	A	545/549 (99%)	531 (97%)	12 (2%)	2 (0%)	30 21

All (2) Ramachandran outliers are listed below:

Mol	Chain	Res	Type
1	A	547	ARG
1	A	268	PRO

5.3.2 Protein sidechains [i](#)

In the following table, the Percentiles column shows the percent sidechain outliers of the chain as a percentile score with respect to all X-ray entries followed by that with respect to entries of similar resolution.

The Analysed column shows the number of residues for which the sidechain conformation was analysed, and the total number of residues.

Mol	Chain	Analysed	Rotameric	Outliers	Percentiles
1	A	473/474 (100%)	443 (94%)	30 (6%)	16 6

All (30) residues with a non-rotameric sidechain are listed below:

Mol	Chain	Res	Type
1	A	68	GLU
1	A	81	CYS
1	A	84	LYS
1	A	85	ASN
1	A	94	LYS
1	A	110	LEU
1	A	132	GLU
1	A	159	VAL
1	A	172	THR
1	A	181	VAL
1	A	195	ASP
1	A	207	ASP
1	A	224	THR
1	A	245	LYS
1	A	253	VAL
1	A	306	GLU
1	A	312	VAL
1	A	330	VAL
1	A	341	VAL
1	A	350	GLU
1	A	353	ARG
1	A	372	LEU
1	A	412	SER
1	A	416	VAL
1	A	428	LEU
1	A	471	ARG
1	A	508	GLU
1	A	533	GLU
1	A	547	ARG
1	A	548	ASN

Sometimes sidechains can be flipped to improve hydrogen bonding and reduce clashes. All (10) such sidechains are listed below:

Mol	Chain	Res	Type
1	A	38	ASN
1	A	85	ASN
1	A	220	GLN

Continued on next page...

Continued from previous page...

Mol	Chain	Res	Type
1	A	233	ASN
1	A	283	GLN
1	A	399	GLN
1	A	452	GLN
1	A	505	GLN
1	A	513	HIS
1	A	548	ASN

5.3.3 RNA ⓘ

There are no RNA molecules in this entry.

5.4 Non-standard residues in protein, DNA, RNA chains ⓘ

There are no non-standard protein/DNA/RNA residues in this entry.

5.5 Carbohydrates ⓘ

There are no oligosaccharides in this entry.

5.6 Ligand geometry ⓘ

4 ligands are modelled in this entry.

In the following table, the Counts columns list the number of bonds (or angles) for which Mogul statistics could be retrieved, the number of bonds (or angles) that are observed in the model and the number of bonds (or angles) that are defined in the Chemical Component Dictionary. The Link column lists molecule types, if any, to which the group is linked. The Z score for a bond length (or angle) is the number of standard deviations the observed value is removed from the expected value. A bond length (or angle) with $|Z| > 2$ is considered an outlier worth inspection. RMSZ is the root-mean-square of all Z scores of the bond lengths (or angles).

Mol	Type	Chain	Res	Link	Bond lengths			Bond angles		
					Counts	RMSZ	$\# Z > 2$	Counts	RMSZ	$\# Z > 2$
2	SO4	A	1549	-	4,4,4	0.19	0	6,6,6	0.18	0
2	SO4	A	1551	-	4,4,4	0.25	0	6,6,6	0.20	0
3	KJU	A	1552	-	12,13,13	0.81	0	16,18,18	1.42	3 (18%)
2	SO4	A	1550	-	4,4,4	0.46	0	6,6,6	0.22	0

In the following table, the Chirals column lists the number of chiral outliers, the number of chiral

centers analysed, the number of these observed in the model and the number defined in the Chemical Component Dictionary. Similar counts are reported in the Torsion and Rings columns. '-' means no outliers of that kind were identified.

Mol	Type	Chain	Res	Link	Chirals	Torsions	Rings
3	KJU	A	1552	-	-	-	0/2/2/2

There are no bond length outliers.

All (3) bond angle outliers are listed below:

Mol	Chain	Res	Type	Atoms	Z	Observed(°)	Ideal(°)
3	A	1552	KJU	O12-C3-C4	3.52	123.15	120.74
3	A	1552	KJU	C4-N8-C9	-2.48	121.48	124.45
3	A	1552	KJU	C3-C4-N8	2.34	120.53	118.56

There are no chirality outliers.

There are no torsion outliers.

There are no ring outliers.

1 monomer is involved in 3 short contacts:

Mol	Chain	Res	Type	Clashes	Symm-Clashes
3	A	1552	KJU	3	0

5.7 Other polymers [i](#)

There are no such residues in this entry.

5.8 Polymer linkage issues [i](#)

There are no chain breaks in this entry.

6 Fit of model and data

6.1 Protein, DNA and RNA chains

In the following table, the column labelled ‘#RSRZ> 2’ contains the number (and percentage) of RSRZ outliers, followed by percent RSRZ outliers for the chain as percentile scores relative to all X-ray entries and entries of similar resolution. The OWAB column contains the minimum, median, 95th percentile and maximum values of the occupancy-weighted average B-factor per residue. The column labelled ‘Q< 0.9’ lists the number of (and percentage) of residues with an average occupancy less than 0.9.

Mol	Chain	Analysed	<RSRZ>	#RSRZ>2		OWAB(Å ²)	Q<0.9
1	A	547/549 (99%)	0.50	62 (11%)	10 11	11, 29, 60, 89	0

All (62) RSRZ outliers are listed below:

Mol	Chain	Res	Type	RSRZ
1	A	20	PHE	6.9
1	A	416	VAL	5.9
1	A	77	THR	4.7
1	A	82	LEU	4.5
1	A	548	ASN	4.4
1	A	417	LEU	4.3
1	A	78	ALA	4.3
1	A	81	CYS	4.2
1	A	419	MET	3.9
1	A	22	VAL	3.9
1	A	86	PHE	3.8
1	A	415	SER	3.7
1	A	19	VAL	3.7
1	A	35	GLY	3.7
1	A	36	LEU	3.6
1	A	71	CYS	3.5
1	A	79	LYS	3.4
1	A	80	VAL	3.4
1	A	83	PRO	3.2
1	A	420	HIS	3.1
1	A	73	LYS	3.1
1	A	75	SER	3.0
1	A	418	SER	3.0
1	A	375	ILE	3.0
1	A	84	LYS	3.0
1	A	432	SER	2.9
1	A	37	LEU	2.9

Continued on next page...

Continued from previous page...

Mol	Chain	Res	Type	RSRZ
1	A	413	ASP	2.8
1	A	226	ALA	2.8
1	A	190	LEU	2.8
1	A	23	LEU	2.7
1	A	497	PHE	2.7
1	A	547	ARG	2.6
1	A	72	ARG	2.6
1	A	136	LEU	2.6
1	A	175	ALA	2.6
1	A	421	LYS	2.6
1	A	370	SER	2.6
1	A	197	GLY	2.5
1	A	2	THR	2.5
1	A	372	LEU	2.4
1	A	74	CYS	2.4
1	A	181	VAL	2.3
1	A	380	VAL	2.3
1	A	196	LEU	2.3
1	A	69	GLU	2.3
1	A	191	LYS	2.3
1	A	377	ALA	2.2
1	A	39	ASP	2.2
1	A	42	GLN	2.2
1	A	376	LYS	2.2
1	A	176	SER	2.2
1	A	247	ARG	2.2
1	A	469	MET	2.2
1	A	216	VAL	2.1
1	A	30	LEU	2.1
1	A	85	ASN	2.1
1	A	200	THR	2.1
1	A	430	VAL	2.1
1	A	546	ALA	2.0
1	A	224	THR	2.0
1	A	199	VAL	2.0

6.2 Non-standard residues in protein, DNA, RNA chains ⓘ

There are no non-standard protein/DNA/RNA residues in this entry.

6.3 Carbohydrates [i](#)

There are no oligosaccharides in this entry.

6.4 Ligands [i](#)

In the following table, the Atoms column lists the number of modelled atoms in the group and the number defined in the chemical component dictionary. The B-factors column lists the minimum, median, 95th percentile and maximum values of B factors of atoms in the group. The column labelled 'Q< 0.9' lists the number of atoms with occupancy less than 0.9.

Mol	Type	Chain	Res	Atoms	RSCC	RSR	B-factors(\AA^2)	Q<0.9
2	SO4	A	1550	5/5	0.86	0.15	65,69,70,70	0
2	SO4	A	1551	5/5	0.86	0.14	77,82,83,83	0
3	KJU	A	1552	12/12	0.86	0.18	63,69,74,76	0
2	SO4	A	1549	5/5	0.93	0.11	60,64,66,66	0

6.5 Other polymers [i](#)

There are no such residues in this entry.