



Full wwPDB X-ray Structure Validation Report ⓘ

Mar 6, 2026 – 04:43 AM UTC

PDB ID : 5C71 / pdb_00005c71
Title : The structure of *Aspergillus oryzae* α -glucuronidase complexed with glycyrrhetic acid monoglucuronide
Authors : Sun, H.L.; Lv, B.; Huang, S.; Li, C.; Jiang, T.
Deposited on : 2015-06-24
Resolution : 2.62 Å(reported)

This is a Full wwPDB X-ray Structure Validation Report for a publicly released PDB entry.

We welcome your comments at validation@mail.wwpdb.org

A user guide is available at

<https://www.wwpdb.org/validation/2017/XrayValidationReportHelp>

with specific help available everywhere you see the ⓘ symbol.

The types of validation reports are described at

<http://www.wwpdb.org/validation/2017/FAQs#types>.

The following versions of software and data (see [references ⓘ](#)) were used in the production of this report:

MolProbity	:	4-5-2 with Phenix2.0
Mogul	:	2022.3.0, CSD as543be (2022)
Xtriage (Phenix)	:	2.0
EDS	:	3.0
Buster-report	:	wwPDB partial adaption of 1.1.7 (2018)
Percentile statistics	:	20250101.v01 (using entries in the PDB archive January 1st 2025)
CCP4	:	9.0.010 (Gargrove)
Density-Fitness	:	1.0.12
Ideal geometry (proteins)	:	Engh & Huber (2001)
Ideal geometry (DNA, RNA)	:	Parkinson et al. (1996)
Validation Pipeline (wwPDB-VP)	:	2.49

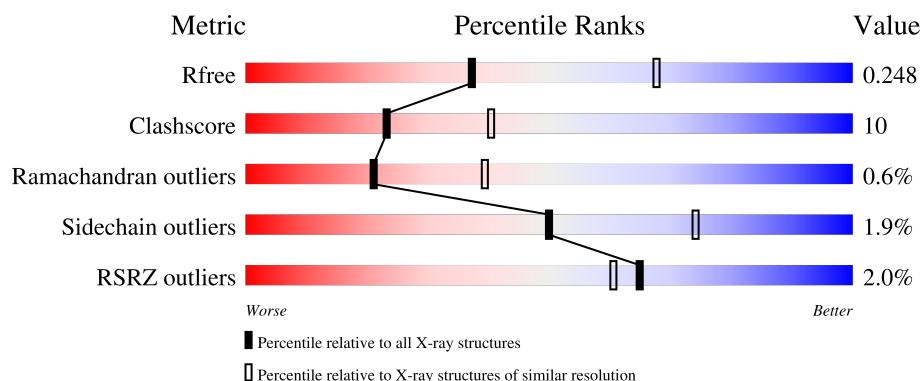
1 Overall quality at a glance

The following experimental techniques were used to determine the structure:

X-RAY DIFFRACTION

The reported resolution of this entry is 2.62 Å.

Percentile scores (ranging between 0-100) for global validation metrics of the entry are shown in the following graphic. The table shows the number of entries on which the scores are based.



Metric	Whole archive (#Entries)	Similar resolution (#Entries, resolution range(Å))
R_{free}	180053	4951 (2.64-2.60)
Clashscore	190562	5303 (2.64-2.60)
Ramachandran outliers	187476	5217 (2.64-2.60)
Sidechain outliers	187428	5217 (2.64-2.60)
RSRZ outliers	180081	4950 (2.64-2.60)

The table below summarises the geometric issues observed across the polymeric chains and their fit to the electron density. The red, orange, yellow and green segments of the lower bar indicate the fraction of residues that contain outliers for ≥ 3 , 2, 1 and 0 types of geometric quality criteria respectively. A grey segment represents the fraction of residues that are not modelled. The numeric value for each fraction is indicated below the corresponding segment, with a dot representing fractions $\leq 5\%$. The upper red bar (where present) indicates the fraction of residues that have poor fit to the electron density. The numeric value is given above the bar.

Mol	Chain	Length	Quality of chain
1	A	637	 2% 71% 19% • 8%
1	B	637	 2% 77% 13% • 9%
1	C	637	 2% 73% 16% • 8%
1	D	637	 % 74% 15% • 9%

The following table lists non-polymeric compounds, carbohydrate monomers and non-standard

residues in protein, DNA, RNA chains that are outliers for geometric or electron-density-fit criteria:

Mol	Type	Chain	Res	Chirality	Geometry	Clashes	Electron density
2	CBW	C	701	-	-	X	-
3	GCU	A	702	-	-	X	-
3	GCU	C	702	-	-	X	-

2 Entry composition

There are 4 unique types of molecules in this entry. The entry contains 18844 atoms, of which 0 are hydrogens and 0 are deuteriums.

In the tables below, the ZeroOcc column contains the number of atoms modelled with zero occupancy, the AltConf column contains the number of residues with at least one atom in alternate conformation and the Trace column contains the number of residues modelled with at most 2 atoms.

- Molecule 1 is a protein called Glucuronidase.

Mol	Chain	Residues	Atoms					ZeroOcc	AltConf	Trace
1	A	583	Total	C	N	O	S	0	0	0
			4648	2949	802	884	13			
1	B	582	Total	C	N	O	S	0	0	0
			4638	2943	799	883	13			
1	C	583	Total	C	N	O	S	0	0	0
			4648	2949	802	884	13			
1	D	582	Total	C	N	O	S	0	0	0
			4638	2943	799	883	13			

There are 140 discrepancies between the modelled and reference sequences:

Chain	Residue	Modelled	Actual	Comment	Reference
A	-32	MET	-	initiating methionine	UNP A7XS03
A	-31	GLY	-	expression tag	UNP A7XS03
A	-30	SER	-	expression tag	UNP A7XS03
A	-29	SER	-	expression tag	UNP A7XS03
A	-28	HIS	-	expression tag	UNP A7XS03
A	-27	HIS	-	expression tag	UNP A7XS03
A	-26	HIS	-	expression tag	UNP A7XS03
A	-25	HIS	-	expression tag	UNP A7XS03
A	-24	HIS	-	expression tag	UNP A7XS03
A	-23	HIS	-	expression tag	UNP A7XS03
A	-22	SER	-	expression tag	UNP A7XS03
A	-21	SER	-	expression tag	UNP A7XS03
A	-20	GLY	-	expression tag	UNP A7XS03
A	-19	LEU	-	expression tag	UNP A7XS03
A	-18	VAL	-	expression tag	UNP A7XS03
A	-17	PRO	-	expression tag	UNP A7XS03
A	-16	ARG	-	expression tag	UNP A7XS03
A	-15	GLY	-	expression tag	UNP A7XS03
A	-14	SER	-	expression tag	UNP A7XS03
A	-13	HIS	-	expression tag	UNP A7XS03
A	-12	MET	-	expression tag	UNP A7XS03

Continued on next page...

Continued from previous page...

Chain	Residue	Modelled	Actual	Comment	Reference
A	-11	ALA	-	expression tag	UNP A7XS03
A	-10	SER	-	expression tag	UNP A7XS03
A	-9	MET	-	expression tag	UNP A7XS03
A	-8	THR	-	expression tag	UNP A7XS03
A	-7	GLY	-	expression tag	UNP A7XS03
A	-6	GLY	-	expression tag	UNP A7XS03
A	-5	GLN	-	expression tag	UNP A7XS03
A	-4	GLN	-	expression tag	UNP A7XS03
A	-3	GLY	-	expression tag	UNP A7XS03
A	-2	ARG	-	expression tag	UNP A7XS03
A	-1	GLY	-	expression tag	UNP A7XS03
A	0	SER	-	expression tag	UNP A7XS03
A	414	ASP	GLU	engineered mutation	UNP A7XS03
A	505	ASP	GLU	engineered mutation	UNP A7XS03
B	-32	MET	-	initiating methionine	UNP A7XS03
B	-31	GLY	-	expression tag	UNP A7XS03
B	-30	SER	-	expression tag	UNP A7XS03
B	-29	SER	-	expression tag	UNP A7XS03
B	-28	HIS	-	expression tag	UNP A7XS03
B	-27	HIS	-	expression tag	UNP A7XS03
B	-26	HIS	-	expression tag	UNP A7XS03
B	-25	HIS	-	expression tag	UNP A7XS03
B	-24	HIS	-	expression tag	UNP A7XS03
B	-23	HIS	-	expression tag	UNP A7XS03
B	-22	SER	-	expression tag	UNP A7XS03
B	-21	SER	-	expression tag	UNP A7XS03
B	-20	GLY	-	expression tag	UNP A7XS03
B	-19	LEU	-	expression tag	UNP A7XS03
B	-18	VAL	-	expression tag	UNP A7XS03
B	-17	PRO	-	expression tag	UNP A7XS03
B	-16	ARG	-	expression tag	UNP A7XS03
B	-15	GLY	-	expression tag	UNP A7XS03
B	-14	SER	-	expression tag	UNP A7XS03
B	-13	HIS	-	expression tag	UNP A7XS03
B	-12	MET	-	expression tag	UNP A7XS03
B	-11	ALA	-	expression tag	UNP A7XS03
B	-10	SER	-	expression tag	UNP A7XS03
B	-9	MET	-	expression tag	UNP A7XS03
B	-8	THR	-	expression tag	UNP A7XS03
B	-7	GLY	-	expression tag	UNP A7XS03
B	-6	GLY	-	expression tag	UNP A7XS03
B	-5	GLN	-	expression tag	UNP A7XS03

Continued on next page...

Continued from previous page...

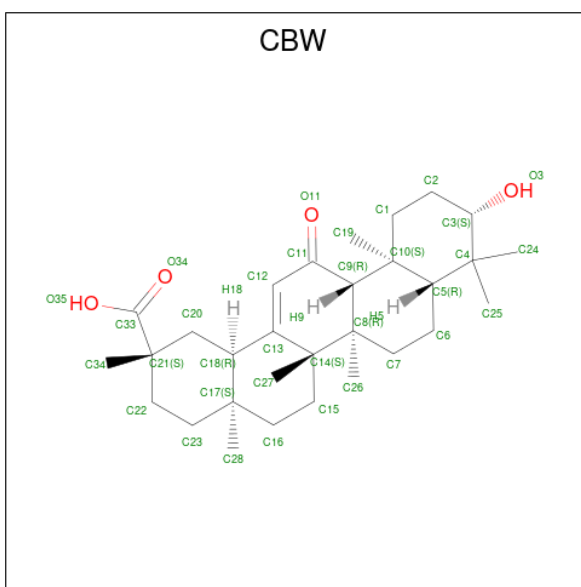
Chain	Residue	Modelled	Actual	Comment	Reference
B	-4	GLN	-	expression tag	UNP A7XS03
B	-3	GLY	-	expression tag	UNP A7XS03
B	-2	ARG	-	expression tag	UNP A7XS03
B	-1	GLY	-	expression tag	UNP A7XS03
B	0	SER	-	expression tag	UNP A7XS03
B	414	ASP	GLU	engineered mutation	UNP A7XS03
B	505	ASP	GLU	engineered mutation	UNP A7XS03
C	-32	MET	-	initiating methionine	UNP A7XS03
C	-31	GLY	-	expression tag	UNP A7XS03
C	-30	SER	-	expression tag	UNP A7XS03
C	-29	SER	-	expression tag	UNP A7XS03
C	-28	HIS	-	expression tag	UNP A7XS03
C	-27	HIS	-	expression tag	UNP A7XS03
C	-26	HIS	-	expression tag	UNP A7XS03
C	-25	HIS	-	expression tag	UNP A7XS03
C	-24	HIS	-	expression tag	UNP A7XS03
C	-23	HIS	-	expression tag	UNP A7XS03
C	-22	SER	-	expression tag	UNP A7XS03
C	-21	SER	-	expression tag	UNP A7XS03
C	-20	GLY	-	expression tag	UNP A7XS03
C	-19	LEU	-	expression tag	UNP A7XS03
C	-18	VAL	-	expression tag	UNP A7XS03
C	-17	PRO	-	expression tag	UNP A7XS03
C	-16	ARG	-	expression tag	UNP A7XS03
C	-15	GLY	-	expression tag	UNP A7XS03
C	-14	SER	-	expression tag	UNP A7XS03
C	-13	HIS	-	expression tag	UNP A7XS03
C	-12	MET	-	expression tag	UNP A7XS03
C	-11	ALA	-	expression tag	UNP A7XS03
C	-10	SER	-	expression tag	UNP A7XS03
C	-9	MET	-	expression tag	UNP A7XS03
C	-8	THR	-	expression tag	UNP A7XS03
C	-7	GLY	-	expression tag	UNP A7XS03
C	-6	GLY	-	expression tag	UNP A7XS03
C	-5	GLN	-	expression tag	UNP A7XS03
C	-4	GLN	-	expression tag	UNP A7XS03
C	-3	GLY	-	expression tag	UNP A7XS03
C	-2	ARG	-	expression tag	UNP A7XS03
C	-1	GLY	-	expression tag	UNP A7XS03
C	0	SER	-	expression tag	UNP A7XS03
C	414	ASP	GLU	engineered mutation	UNP A7XS03
C	505	ASP	GLU	engineered mutation	UNP A7XS03

Continued on next page...

Continued from previous page...

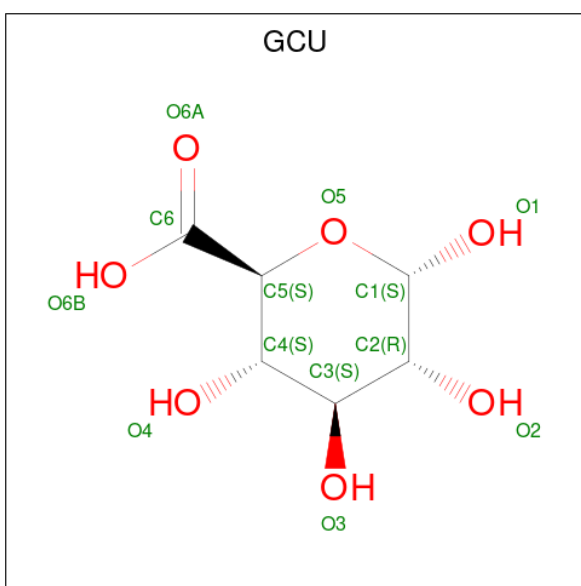
Chain	Residue	Modelled	Actual	Comment	Reference
D	-32	MET	-	initiating methionine	UNP A7XS03
D	-31	GLY	-	expression tag	UNP A7XS03
D	-30	SER	-	expression tag	UNP A7XS03
D	-29	SER	-	expression tag	UNP A7XS03
D	-28	HIS	-	expression tag	UNP A7XS03
D	-27	HIS	-	expression tag	UNP A7XS03
D	-26	HIS	-	expression tag	UNP A7XS03
D	-25	HIS	-	expression tag	UNP A7XS03
D	-24	HIS	-	expression tag	UNP A7XS03
D	-23	HIS	-	expression tag	UNP A7XS03
D	-22	SER	-	expression tag	UNP A7XS03
D	-21	SER	-	expression tag	UNP A7XS03
D	-20	GLY	-	expression tag	UNP A7XS03
D	-19	LEU	-	expression tag	UNP A7XS03
D	-18	VAL	-	expression tag	UNP A7XS03
D	-17	PRO	-	expression tag	UNP A7XS03
D	-16	ARG	-	expression tag	UNP A7XS03
D	-15	GLY	-	expression tag	UNP A7XS03
D	-14	SER	-	expression tag	UNP A7XS03
D	-13	HIS	-	expression tag	UNP A7XS03
D	-12	MET	-	expression tag	UNP A7XS03
D	-11	ALA	-	expression tag	UNP A7XS03
D	-10	SER	-	expression tag	UNP A7XS03
D	-9	MET	-	expression tag	UNP A7XS03
D	-8	THR	-	expression tag	UNP A7XS03
D	-7	GLY	-	expression tag	UNP A7XS03
D	-6	GLY	-	expression tag	UNP A7XS03
D	-5	GLN	-	expression tag	UNP A7XS03
D	-4	GLN	-	expression tag	UNP A7XS03
D	-3	GLY	-	expression tag	UNP A7XS03
D	-2	ARG	-	expression tag	UNP A7XS03
D	-1	GLY	-	expression tag	UNP A7XS03
D	0	SER	-	expression tag	UNP A7XS03
D	414	ASP	GLU	engineered mutation	UNP A7XS03
D	505	ASP	GLU	engineered mutation	UNP A7XS03

- Molecule 2 is (3BETA,5BETA,14BETA)-3-HYDROXY-11-OXOOLEAN-12-EN-29-OIC ACID (CCD ID: CBW) (formula: C₃₀H₄₆O₄).



Mol	Chain	Residues	Atoms			ZeroOcc	AltConf
2	A	1	Total	C	O	0	0
			34	30	4		
2	C	1	Total	C	O	0	0
			34	30	4		

- Molecule 3 is alpha-D-glucopyranuronic acid (CCD ID: GCU) (formula: $C_6H_{10}O_7$).




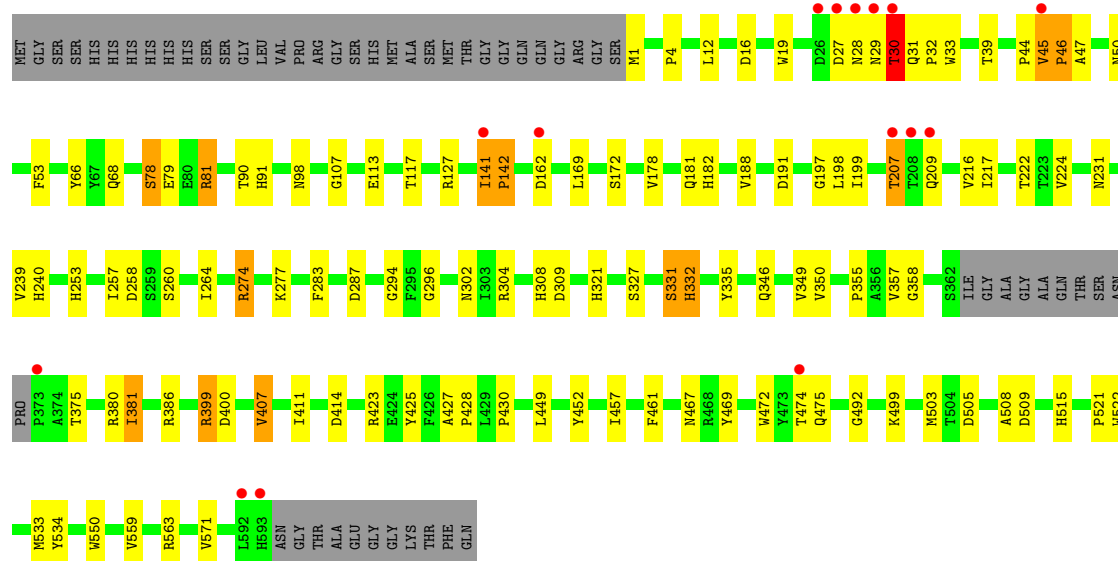
Mol	Chain	Residues	Atoms			ZeroOcc	AltConf
3	A	1	Total	C	O	0	0
			12	6	6		
3	C	1	Total	C	O	0	0
			12	6	6		

- Molecule 4 is water.


Mol	Chain	Residues	Atoms		ZeroOcc	AltConf
4	A	49	Total 49	O 49	0	0
4	B	44	Total 44	O 44	0	0
4	C	41	Total 41	O 41	0	0
4	D	46	Total 46	O 46	0	0

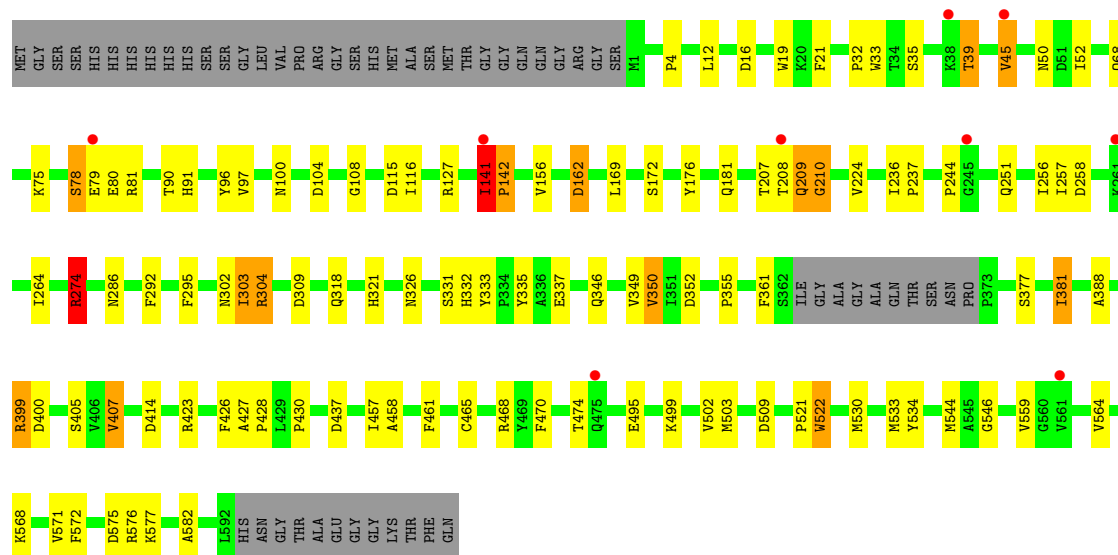
• Molecule 1: Glucuronidase

Chain C: 



• Molecule 1: Glucuronidase

Chain D: 



4 Data and refinement statistics

Property	Value	Source
Space group	P 1	Depositor
Cell constants a, b, c, α , β , γ	96.07Å 96.23Å 96.19Å 88.27° 74.36° 71.13°	Depositor
Resolution (Å)	46.23 – 2.62 46.23 – 2.62	Depositor EDS
% Data completeness (in resolution range)	98.0 (46.23-2.62) 97.2 (46.23-2.62)	Depositor EDS
R_{merge}	0.06	Depositor
R_{sym}	(Not available)	Depositor
$\langle I/\sigma(I) \rangle$ ¹	8.04 (at 2.61Å)	Xtriage
Refinement program	PHENIX (phenix.refine: 1.8.2_1309)	Depositor
R, R_{free}	0.187 , 0.248 0.188 , 0.248	Depositor DCC
R_{free} test set	4540 reflections (4.82%)	wwPDB-VP
Wilson B-factor (Å ²)	18.8	Xtriage
Anisotropy	0.050	Xtriage
Bulk solvent k_{sol} (e/Å ³), B_{sol} (Å ²)	0.36 , 30.0	EDS
L-test for twinning ²	$\langle L \rangle = 0.48$, $\langle L^2 \rangle = 0.31$	Xtriage
Estimated twinning fraction	0.017 for -h,-l,-k	Xtriage
F_o, F_c correlation	0.91	EDS
Total number of atoms	18844	wwPDB-VP
Average B, all atoms (Å ²)	14.0	wwPDB-VP

Xtriage's analysis on translational NCS is as follows: *The largest off-origin peak in the Patterson function is 4.54% of the height of the origin peak. No significant pseudotranslation is detected.*

¹Intensities estimated from amplitudes.

²Theoretical values of $\langle |L| \rangle$, $\langle L^2 \rangle$ for acentric reflections are 0.5, 0.333 respectively for untwinned datasets, and 0.375, 0.2 for perfectly twinned datasets.

5 Model quality [i](#)

5.1 Standard geometry [i](#)

Bond lengths and bond angles in the following residue types are not validated in this section: GCU, CBW

The Z score for a bond length (or angle) is the number of standard deviations the observed value is removed from the expected value. A bond length (or angle) with $|Z| > 5$ is considered an outlier worth inspection. RMSZ is the root-mean-square of all Z scores of the bond lengths (or angles).

Mol	Chain	Bond lengths		Bond angles	
		RMSZ	# $ Z > 5$	RMSZ	# $ Z > 5$
1	A	0.98	2/4769 (0.0%)	1.19	28/6496 (0.4%)
1	B	0.94	2/4758 (0.0%)	1.13	17/6481 (0.3%)
1	C	0.95	2/4769 (0.0%)	1.17	30/6496 (0.5%)
1	D	0.95	3/4758 (0.1%)	1.18	28/6481 (0.4%)
All	All	0.96	9/19054 (0.0%)	1.17	103/25954 (0.4%)

Chiral center outliers are detected by calculating the chiral volume of a chiral center and verifying if the center is modelled as a planar moiety or with the opposite hand. A planarity outlier is detected by checking planarity of atoms in a peptide group, atoms in a mainchain group or atoms of a sidechain that are expected to be planar.

Mol	Chain	#Chirality outliers	#Planarity outliers
1	A	0	1
1	B	0	2
1	D	0	2
All	All	0	5

All (9) bond length outliers are listed below:

Mol	Chain	Res	Type	Atoms	Z	Observed(Å)	Ideal(Å)
1	C	107	GLY	N-CA	6.57	1.54	1.45
1	A	244	PRO	N-CD	-6.28	1.39	1.47
1	B	519	VAL	CA-CB	5.96	1.59	1.53
1	B	162	ASP	C-O	5.37	1.30	1.24
1	D	162	ASP	C-O	5.34	1.30	1.24
1	D	437	ASP	C-O	-5.27	1.20	1.24
1	D	104	ASP	C-O	-5.21	1.18	1.24
1	C	308	HIS	C-O	-5.18	1.17	1.23
1	A	107	GLY	N-CA	5.11	1.51	1.45

All (103) bond angle outliers are listed below:

Mol	Chain	Res	Type	Atoms	Z	Observed(°)	Ideal(°)
1	A	141	ILE	CA-C-N	-21.71	98.02	120.38
1	A	141	ILE	C-N-CA	-21.71	98.02	120.38
1	C	141	ILE	CA-C-N	-20.59	99.18	120.38
1	C	141	ILE	C-N-CA	-20.59	99.18	120.38
1	D	141	ILE	CA-C-N	-17.61	102.24	120.38
1	D	141	ILE	C-N-CA	-17.61	102.24	120.38
1	A	45	VAL	CA-C-N	-16.80	98.84	119.84
1	A	45	VAL	C-N-CA	-16.80	98.84	119.84
1	D	45	VAL	CA-C-N	-16.66	99.01	119.84
1	D	45	VAL	C-N-CA	-16.66	99.01	119.84
1	B	141	ILE	CA-C-N	-15.27	104.65	120.38
1	B	141	ILE	C-N-CA	-15.27	104.65	120.38
1	C	45	VAL	CA-C-N	-14.34	101.91	119.84
1	C	45	VAL	C-N-CA	-14.34	101.91	119.84
1	B	45	VAL	CA-C-N	-14.12	102.19	119.84
1	B	45	VAL	C-N-CA	-14.12	102.19	119.84
1	D	39	THR	CB-CA-C	-12.01	93.01	109.71
1	D	39	THR	N-CA-C	10.70	126.04	110.42
1	A	302	ASN	CA-C-N	-10.34	110.16	121.84
1	A	302	ASN	C-N-CA	-10.34	110.16	121.84
1	B	302	ASN	CA-C-N	-9.88	113.07	122.66
1	B	302	ASN	C-N-CA	-9.88	113.07	122.66
1	B	50	ASN	N-CA-C	8.80	120.95	111.36
1	C	302	ASN	CA-C-N	-8.77	111.42	121.85
1	C	302	ASN	C-N-CA	-8.77	111.42	121.85
1	D	50	ASN	N-CA-C	8.53	120.58	111.28
1	A	106	VAL	CA-C-N	-8.52	112.01	120.10
1	A	106	VAL	C-N-CA	-8.52	112.01	120.10
1	D	407	VAL	N-CA-CB	-7.86	102.98	112.33
1	C	45	VAL	N-CA-CB	7.16	121.24	111.21
1	B	407	VAL	N-CA-CB	-7.08	103.15	112.36
1	A	50	ASN	N-CA-C	7.04	118.61	111.07
1	D	142	PRO	N-CA-C	-6.89	102.30	110.70
1	C	142	PRO	CA-C-N	-6.64	113.80	120.31
1	C	142	PRO	C-N-CA	-6.64	113.80	120.31
1	A	380	ARG	N-CA-C	6.56	124.77	110.80
1	C	50	ASN	N-CA-C	6.54	118.07	111.07
1	B	414	ASP	CA-C-N	-6.50	113.60	120.03
1	B	414	ASP	C-N-CA	-6.50	113.60	120.03
1	C	142	PRO	N-CA-C	-6.42	102.86	110.70
1	C	31	GLN	N-CA-C	6.31	123.76	109.81
1	D	522	TRP	CB-CA-C	-6.18	99.75	111.06
1	D	80	GLU	N-CA-C	-6.17	99.95	109.52

Continued on next page...

Continued from previous page...

Mol	Chain	Res	Type	Atoms	Z	Observed(°)	Ideal(°)
1	B	295	PHE	N-CA-C	6.14	118.74	109.23
1	A	296	GLY	N-CA-C	-6.05	100.92	111.62
1	C	30	THR	N-CA-C	-6.01	98.01	110.80
1	B	244	PRO	CA-C-N	-5.88	113.45	120.03
1	B	244	PRO	C-N-CA	-5.88	113.45	120.03
1	D	458	ALA	N-CA-C	5.83	117.31	111.07
1	C	44	PRO	CA-C-N	-5.82	111.36	122.13
1	C	44	PRO	C-N-CA	-5.82	111.36	122.13
1	D	414	ASP	CA-C-N	-5.79	114.30	120.03
1	D	414	ASP	C-N-CA	-5.79	114.30	120.03
1	D	377	SER	CA-C-N	5.78	126.17	119.47
1	D	377	SER	C-N-CA	5.78	126.17	119.47
1	C	78	SER	N-CA-C	-5.71	102.96	110.43
1	A	207	THR	N-CA-C	5.70	117.85	109.24
1	A	142	PRO	N-CA-C	-5.69	103.75	110.70
1	A	427	ALA	CA-C-N	-5.68	113.82	119.56
1	A	427	ALA	C-N-CA	-5.68	113.82	119.56
1	D	304	ARG	N-CA-C	-5.65	104.97	113.89
1	D	582	ALA	N-CA-C	-5.62	105.16	111.28
1	C	98	ASN	CA-C-N	-5.61	114.28	122.46
1	C	98	ASN	C-N-CA	-5.61	114.28	122.46
1	C	350	VAL	N-CA-C	5.56	116.13	108.12
1	A	78	SER	N-CA-C	-5.56	103.15	110.43
1	A	357	VAL	CB-CA-C	-5.52	103.65	111.38
1	D	35	SER	N-CA-C	5.51	115.56	108.34
1	A	243	GLN	CA-C-N	5.47	126.67	119.84
1	A	243	GLN	C-N-CA	5.47	126.67	119.84
1	C	399	ARG	CB-CG-CD	-5.45	98.77	111.30
1	C	207	THR	N-CA-C	5.45	117.08	108.96
1	C	98	ASN	CB-CA-C	-5.45	103.78	111.95
1	A	488	GLU	N-CA-C	-5.41	105.03	111.03
1	D	399	ARG	CB-CG-CD	-5.39	98.89	111.30
1	C	81	ARG	N-CA-C	-5.38	101.12	109.72
1	B	142	PRO	N-CA-C	-5.33	104.19	110.70
1	D	333	TYR	N-CA-C	-5.31	103.35	108.13
1	C	296	GLY	N-CA-C	-5.31	103.31	111.64
1	A	399	ARG	CB-CG-CD	-5.30	99.11	111.30
1	A	45	VAL	C-N-CD	5.29	146.70	125.00
1	B	531	LEU	N-CA-C	-5.28	105.42	111.07
1	B	78	SER	N-CA-C	5.27	116.71	111.07
1	C	331	SER	CA-C-N	5.26	131.59	121.54
1	C	331	SER	C-N-CA	5.26	131.59	121.54

Continued on next page...

Continued from previous page...

Mol	Chain	Res	Type	Atoms	Z	Observed(°)	Ideal(°)
1	A	414	ASP	CA-C-N	-5.25	114.83	120.03
1	A	414	ASP	C-N-CA	-5.25	114.83	120.03
1	D	295	PHE	N-CA-C	5.24	117.14	109.24
1	A	331	SER	CA-C-N	5.21	131.50	121.54
1	A	331	SER	C-N-CA	5.21	131.50	121.54
1	A	239	VAL	CB-CA-C	-5.17	103.48	111.08
1	B	304	ARG	CG-CD-NE	-5.15	100.67	112.00
1	D	244	PRO	CA-C-N	-5.14	113.71	120.14
1	D	244	PRO	C-N-CA	-5.14	113.71	120.14
1	C	407	VAL	N-CA-CB	-5.09	106.27	112.33
1	D	274	ARG	CG-CD-NE	5.09	123.19	112.00
1	D	80	GLU	N-CA-CB	5.07	120.37	111.55
1	A	401	LYS	N-CA-C	5.06	118.22	111.75
1	C	107	GLY	N-CA-C	5.05	119.79	112.82
1	C	30	THR	CB-CA-C	5.05	120.47	110.42
1	D	350	VAL	N-CA-C	5.03	115.36	108.12
1	C	141	ILE	N-CA-C	5.01	119.70	108.88
1	D	78	SER	N-CA-C	-5.00	102.88	110.28

There are no chirality outliers.

All (5) planarity outliers are listed below:

Mol	Chain	Res	Type	Group
1	A	141	ILE	Peptide
1	B	245	GLY	Peptide
1	B	295	PHE	Peptide
1	D	141	ILE	Peptide
1	D	210	GLY	Peptide

5.2 Too-close contacts ⓘ

In the following table, the Non-H and H(model) columns list the number of non-hydrogen atoms and hydrogen atoms in the chain respectively. The H(added) column lists the number of hydrogen atoms added and optimized by MolProbity. The Clashes column lists the number of clashes within the asymmetric unit, whereas Symm-Clashes lists symmetry-related clashes.

Mol	Chain	Non-H	H(model)	H(added)	Clashes	Symm-Clashes
1	A	4648	0	4472	110	0
1	B	4638	0	4465	74	0
1	C	4648	0	4472	96	0
1	D	4638	0	4465	84	0

Continued on next page...

Continued from previous page...

Mol	Chain	Non-H	H(model)	H(added)	Clashes	Symm-Clashes
2	A	34	0	44	19	0
2	C	34	0	44	26	0
3	A	12	0	7	10	0
3	C	12	0	7	10	0
4	A	49	0	0	0	0
4	B	44	0	0	0	0
4	C	41	0	0	1	0
4	D	46	0	0	1	0
All	All	18844	0	17976	379	0

The all-atom clashscore is defined as the number of clashes found per 1000 atoms (including hydrogen atoms). The all-atom clashscore for this structure is 10.

All (379) close contacts within the same asymmetric unit are listed below, sorted by their clash magnitude.

Atom-1	Atom-2	Interatomic distance (Å)	Clash overlap (Å)
1:C:449:LEU:HD23	2:C:701:CBW:C34	1.75	1.16
2:A:701:CBW:H263	2:A:701:CBW:H191	1.30	1.13
1:C:449:LEU:CD2	2:C:701:CBW:H342	1.79	1.11
2:C:701:CBW:H343	2:C:701:CBW:H161	1.22	1.10
2:C:701:CBW:H263	2:C:701:CBW:H191	1.30	1.08
2:A:701:CBW:H253	2:A:701:CBW:H192	1.36	1.07
1:C:45:VAL:O	1:C:47:ALA:N	1.87	1.07
1:D:90:THR:HG22	1:D:108:GLY:O	1.51	1.07
2:C:701:CBW:H253	2:C:701:CBW:H192	1.36	1.05
2:A:701:CBW:H252	3:A:702:GCU:H2	1.39	1.04
1:C:197:GLY:HA3	1:C:239:VAL:HG21	1.41	1.02
1:A:423:ARG:HA	1:A:457:ILE:CD1	1.91	0.99
1:A:141:ILE:HG23	1:A:142:PRO:CD	1.95	0.96
1:A:349:VAL:HG13	1:A:407:VAL:HG11	1.47	0.95
1:A:162:ASP:HB2	3:A:702:GCU:H3	1.48	0.95
1:D:19:TRP:CD1	1:D:45:VAL:HG21	2.02	0.94
1:B:423:ARG:HA	1:B:457:ILE:CD1	2.00	0.92
1:D:39:THR:HG23	1:D:39:THR:O	1.68	0.92
2:C:701:CBW:H343	2:C:701:CBW:C16	2.01	0.91
1:A:423:ARG:CA	1:A:457:ILE:HD11	2.03	0.89
2:C:701:CBW:C34	2:C:701:CBW:H161	2.02	0.89
1:D:423:ARG:HA	1:D:457:ILE:HD11	1.55	0.89
1:D:141:ILE:CD1	1:D:355:PRO:HB2	2.04	0.88
1:A:45:VAL:HG13	1:A:46:PRO:HD3	1.56	0.88
1:D:349:VAL:HG13	1:D:407:VAL:HG11	1.56	0.87

Continued on next page...

Continued from previous page...

Atom-1	Atom-2	Interatomic distance (Å)	Clash overlap (Å)
1:D:19:TRP:CD1	1:D:45:VAL:CG2	2.58	0.86
1:A:16:ASP:HA	1:A:45:VAL:HG11	1.58	0.85
1:C:449:LEU:CD2	2:C:701:CBW:C34	2.45	0.85
1:C:449:LEU:HD23	2:C:701:CBW:H342	0.90	0.84
1:A:423:ARG:HA	1:A:457:ILE:HD11	1.59	0.84
1:C:141:ILE:HG23	1:C:142:PRO:CD	2.09	0.81
1:B:274:ARG:HH11	1:B:274:ARG:HG2	1.46	0.81
2:A:701:CBW:H252	3:A:702:GCU:C2	2.10	0.81
1:A:357:VAL:HG12	1:A:413:ASN:HB3	1.63	0.80
1:A:197:GLY:HA3	1:A:239:VAL:HG11	1.64	0.80
1:C:29:ASN:O	1:C:30:THR:C	2.25	0.80
1:A:468:ARG:HB2	1:A:503:MET:HE1	1.64	0.79
1:D:274:ARG:HG2	1:D:274:ARG:HH11	1.45	0.79
1:C:563:ARG:NH2	3:C:702:GCU:O6A	2.15	0.79
1:A:162:ASP:CB	3:A:702:GCU:H3	2.14	0.77
1:A:521:PRO:O	1:A:522:TRP:HB2	1.85	0.77
1:C:509:ASP:O	1:C:522:TRP:HA	1.85	0.77
1:C:550:TRP:CE2	3:C:702:GCU:O4	2.37	0.77
1:A:533:MET:HE2	1:A:534:TYR:CD1	2.22	0.75
1:B:423:ARG:CA	1:B:457:ILE:HD11	2.16	0.75
1:A:309:ASP:CG	1:B:304:ARG:HH22	1.94	0.75
1:A:423:ARG:HA	1:A:457:ILE:HD12	1.68	0.75
1:A:141:ILE:HG23	1:A:142:PRO:HD3	1.69	0.73
2:A:701:CBW:H263	2:A:701:CBW:C19	2.15	0.73
1:A:405:SER:O	1:A:407:VAL:HG13	1.89	0.73
2:A:701:CBW:H253	2:A:701:CBW:C19	2.16	0.73
1:D:141:ILE:HD12	1:D:142:PRO:HD3	1.70	0.73
1:C:162:ASP:HB2	3:C:702:GCU:H3	1.70	0.72
1:B:258:ASP:O	1:B:260:SER:O	2.07	0.72
2:A:701:CBW:H191	2:A:701:CBW:C26	2.16	0.72
2:C:701:CBW:H253	2:C:701:CBW:C19	2.16	0.72
1:B:423:ARG:HA	1:B:457:ILE:HD11	1.70	0.72
2:C:701:CBW:H263	2:C:701:CBW:C19	2.15	0.72
1:C:32:PRO:HG2	1:C:66:TYR:CE2	2.25	0.72
1:A:309:ASP:OD2	1:B:304:ARG:NH2	2.23	0.72
1:D:141:ILE:CD1	1:D:142:PRO:HD3	2.20	0.72
1:C:335:TYR:O	1:C:399:ARG:NH2	2.22	0.71
2:C:701:CBW:H191	2:C:701:CBW:C26	2.17	0.71
1:D:399:ARG:HD3	1:D:400:ASP:OD1	1.91	0.70
1:C:29:ASN:C	1:C:30:THR:O	2.29	0.70
1:A:349:VAL:HG13	1:A:407:VAL:CG1	2.22	0.70

Continued on next page...

Continued from previous page...

Atom-1	Atom-2	Interatomic distance (Å)	Clash overlap (Å)
1:D:405:SER:O	1:D:407:VAL:HG13	1.91	0.69
1:A:45:VAL:HG13	1:A:46:PRO:CD	2.22	0.69
1:D:141:ILE:HD12	1:D:355:PRO:HB2	1.74	0.69
1:C:423:ARG:HA	1:C:457:ILE:HD11	1.74	0.69
1:D:207:THR:OG1	1:D:209:GLN:HG2	1.92	0.69
1:B:64:TRP:CH2	1:B:92:HIS:CD2	2.81	0.69
1:C:550:TRP:CZ2	3:C:702:GCU:O4	2.44	0.69
1:C:45:VAL:O	1:C:46:PRO:C	2.32	0.68
1:C:141:ILE:HG23	1:C:142:PRO:HD3	1.75	0.68
1:B:33:TRP:O	1:B:127:ARG:NH1	2.24	0.67
1:B:64:TRP:CH2	1:B:92:HIS:HD2	2.11	0.67
1:C:197:GLY:CA	1:C:239:VAL:HG21	2.22	0.67
1:D:39:THR:O	1:D:39:THR:CG2	2.42	0.67
1:D:361:PHE:HE1	1:D:381:ILE:HD13	1.59	0.67
1:C:258:ASP:HB3	1:C:264:ILE:HD11	1.77	0.67
1:D:575:ASP:O	1:D:576:ARG:HB2	1.95	0.67
1:A:277:LYS:NZ	1:A:287:ASP:OD1	2.28	0.67
1:A:16:ASP:HA	1:A:45:VAL:CG1	2.23	0.67
1:B:521:PRO:O	1:B:522:TRP:HB2	1.93	0.67
1:B:423:ARG:CA	1:B:457:ILE:CD1	2.74	0.66
2:A:701:CBW:H192	2:A:701:CBW:C25	2.22	0.65
1:C:78:SER:O	1:C:79:GLU:HB2	1.94	0.65
4:C:813:HOH:O	1:D:75:LYS:HE2	1.96	0.65
1:A:559:VAL:HG13	1:C:521:PRO:HG2	1.78	0.65
1:B:141:ILE:HG23	1:B:142:PRO:HD3	1.78	0.65
1:B:141:ILE:O	1:B:143:PRO:HD3	1.97	0.65
1:D:19:TRP:CG	1:D:45:VAL:HG21	2.32	0.65
1:A:274:ARG:HH12	1:A:276:VAL:HG22	1.62	0.65
1:D:350:VAL:O	1:D:407:VAL:HG22	1.97	0.65
1:D:521:PRO:O	1:D:522:TRP:HB2	1.96	0.64
1:A:197:GLY:H	1:A:239:VAL:HG13	1.62	0.64
1:C:304:ARG:HH22	1:D:309:ASP:CG	2.06	0.63
2:C:701:CBW:H252	3:C:702:GCU:C1	2.28	0.63
1:A:423:ARG:CA	1:A:457:ILE:CD1	2.65	0.63
1:A:423:ARG:N	1:A:457:ILE:HD11	2.13	0.63
1:C:521:PRO:O	1:C:522:TRP:HB2	1.98	0.63
1:B:423:ARG:N	1:B:457:ILE:HD11	2.13	0.63
2:A:701:CBW:H252	3:A:702:GCU:C1	2.28	0.63
1:B:335:TYR:O	1:B:399:ARG:NH2	2.23	0.63
1:D:19:TRP:CD1	1:D:45:VAL:HG23	2.34	0.63
1:C:162:ASP:HB2	3:C:702:GCU:C3	2.28	0.62

Continued on next page...

Continued from previous page...

Atom-1	Atom-2	Interatomic distance (Å)	Clash overlap (Å)
1:A:138:TYR:HB3	1:A:380:ARG:O	1.98	0.62
1:B:91:HIS:O	1:B:106:VAL:O	2.16	0.62
1:D:349:VAL:HG13	1:D:407:VAL:CG1	2.28	0.62
1:A:559:VAL:CG1	1:C:521:PRO:HG2	2.30	0.61
1:C:533:MET:HE2	1:C:534:TYR:CD1	2.35	0.61
1:A:102:VAL:HG12	1:A:114:ALA:HB1	1.82	0.61
1:A:45:VAL:O	1:A:47:ALA:N	2.34	0.61
1:C:469:TYR:CE1	2:C:701:CBW:H21C	2.37	0.60
1:B:457:ILE:HG22	1:B:461:PHE:HE1	1.66	0.60
1:A:564:VAL:O	1:A:568:LYS:NZ	2.35	0.59
1:C:304:ARG:NH2	1:D:309:ASP:OD2	2.34	0.59
1:D:19:TRP:NE1	1:D:45:VAL:HG21	2.17	0.59
1:B:423:ARG:HA	1:B:457:ILE:HD12	1.83	0.59
1:A:350:VAL:O	1:A:407:VAL:HG22	2.02	0.59
1:A:474:THR:OG1	1:A:475:GLN:OE1	2.21	0.59
1:A:257:ILE:HG23	1:A:261:LYS:HA	1.84	0.59
1:B:399:ARG:HD3	1:B:400:ASP:OD1	2.03	0.59
2:C:701:CBW:H192	2:C:701:CBW:C25	2.22	0.59
1:C:178:VAL:CG1	1:C:182:HIS:CG	2.86	0.58
1:C:309:ASP:CG	1:D:304:ARG:HH22	2.11	0.58
1:A:304:ARG:NH2	1:B:309:ASP:OD2	2.36	0.58
1:A:274:ARG:HH12	1:A:276:VAL:CG2	2.15	0.58
1:C:550:TRP:NE1	3:C:702:GCU:O4	2.36	0.58
1:D:141:ILE:HD11	1:D:355:PRO:HB2	1.85	0.58
1:B:349:VAL:CG1	1:B:407:VAL:HG21	2.33	0.58
1:C:309:ASP:OD2	1:D:304:ARG:NH2	2.37	0.58
1:B:141:ILE:CG2	1:B:142:PRO:HD3	2.33	0.58
1:C:178:VAL:HG11	1:C:182:HIS:CG	2.39	0.58
1:D:302:ASN:OD1	1:D:303:ILE:HG13	2.04	0.58
1:D:12:LEU:HD12	1:D:176:TYR:HB3	1.86	0.58
1:A:181:GLN:HB2	1:A:264:ILE:HD11	1.86	0.57
1:B:181:GLN:HG2	1:B:207:THR:CG2	2.34	0.57
1:A:304:ARG:HH22	1:B:309:ASP:CG	2.11	0.57
1:D:21:PHE:O	1:D:39:THR:HG21	2.04	0.57
1:D:78:SER:C	1:D:79:GLU:HG2	2.31	0.56
1:C:467:ASN:HB3	1:C:505:ASP:HB2	1.88	0.56
1:D:468:ARG:HB2	1:D:503:MET:HE1	1.86	0.56
1:A:349:VAL:CG1	1:A:407:VAL:HG21	2.35	0.56
1:D:533:MET:HE2	1:D:534:TYR:CD1	2.41	0.56
1:C:472:TRP:CZ2	1:C:509:ASP:HB2	2.41	0.56
1:A:533:MET:CE	1:A:534:TYR:CD1	2.90	0.55

Continued on next page...

Continued from previous page...

Atom-1	Atom-2	Interatomic distance (Å)	Clash overlap (Å)
1:A:467:ASN:HB3	1:A:505:ASP:HB2	1.87	0.55
1:B:258:ASP:HB3	1:B:264:ILE:HD11	1.89	0.55
1:C:178:VAL:CG1	1:C:182:HIS:CB	2.85	0.55
2:A:701:CBW:C25	3:A:702:GCU:C1	2.85	0.55
1:A:242:TRP:CE3	1:A:274:ARG:HD3	2.43	0.54
1:A:162:ASP:OD2	3:A:702:GCU:C3	2.55	0.54
2:C:701:CBW:C25	3:C:702:GCU:C1	2.85	0.54
1:D:423:ARG:HA	1:D:457:ILE:CD1	2.34	0.54
1:A:188:VAL:HG13	1:A:199:ILE:HG23	1.90	0.54
1:C:277:LYS:NZ	1:C:287:ASP:OD1	2.36	0.54
1:B:141:ILE:CG2	1:B:142:PRO:CD	2.86	0.54
1:D:303:ILE:HG22	1:D:303:ILE:O	2.06	0.53
1:C:216:VAL:O	1:C:224:VAL:HG22	2.08	0.53
1:A:22:ALA:HB2	1:A:39:THR:HG21	1.89	0.53
1:A:141:ILE:HG23	1:A:142:PRO:HD2	1.86	0.53
1:A:141:ILE:CG2	1:A:142:PRO:CD	2.79	0.53
1:C:423:ARG:HA	1:C:457:ILE:CD1	2.38	0.53
1:B:188:VAL:HG13	1:B:199:ILE:HG23	1.90	0.53
1:A:17:GLY:H	1:A:45:VAL:HG12	1.73	0.53
1:C:188:VAL:HG13	1:C:199:ILE:HG23	1.91	0.53
1:C:509:ASP:HB3	1:C:522:TRP:CZ3	2.44	0.53
1:B:141:ILE:HG23	1:B:142:PRO:CD	2.38	0.52
1:A:335:TYR:O	1:A:399:ARG:NH2	2.31	0.52
1:A:378:PRO:O	1:A:382:ASN:ND2	2.42	0.52
1:C:45:VAL:O	1:C:169:LEU:O	2.28	0.52
1:D:181:GLN:HG2	1:D:207:THR:HG21	1.90	0.52
1:B:405:SER:O	1:B:407:VAL:HG13	2.08	0.52
1:B:16:ASP:OD2	1:B:172:SER:OG	2.21	0.52
1:D:326:ASN:C	1:D:326:ASN:OD1	2.52	0.52
1:C:222:THR:O	1:C:224:VAL:HG13	2.10	0.52
1:A:45:VAL:CG1	1:A:46:PRO:HD3	2.35	0.52
1:A:274:ARG:HG2	1:A:275:THR:N	2.25	0.52
1:B:334:PRO:HG3	1:B:396:LEU:HD13	1.91	0.52
1:D:45:VAL:O	1:D:169:LEU:O	2.28	0.52
1:D:181:GLN:HE21	1:D:207:THR:HG23	1.74	0.52
1:D:349:VAL:CG1	1:D:407:VAL:HG21	2.39	0.51
1:C:19:TRP:CD1	1:C:45:VAL:HG13	2.45	0.51
1:D:352:ASP:OD2	1:D:400:ASP:OD2	2.27	0.51
1:A:457:ILE:HG22	1:A:461:PHE:HE1	1.76	0.51
1:A:427:ALA:HB3	1:A:428:PRO:HD3	1.92	0.51
2:A:701:CBW:H202	2:A:701:CBW:H271	1.92	0.51

Continued on next page...

Continued from previous page...

Atom-1	Atom-2	Interatomic distance (Å)	Clash overlap (Å)
1:A:28:ASN:C	1:A:30:THR:H	2.19	0.51
1:C:27:ASP:C	1:C:29:ASN:H	2.19	0.51
1:C:258:ASP:O	1:C:260:SER:O	2.28	0.51
1:D:81:ARG:NH1	1:D:115:ASP:OD2	2.44	0.51
1:D:461:PHE:O	1:D:499:LYS:NZ	2.36	0.51
1:A:521:PRO:O	1:A:522:TRP:CB	2.57	0.51
1:D:302:ASN:CG	1:D:303:ILE:HG13	2.36	0.51
1:A:472:TRP:CZ2	1:A:509:ASP:HB2	2.46	0.51
2:C:701:CBW:H271	2:C:701:CBW:H202	1.93	0.51
1:A:45:VAL:O	1:A:169:LEU:O	2.30	0.50
1:C:197:GLY:HA3	1:C:239:VAL:CG2	2.28	0.50
1:A:244:PRO:O	1:A:347:GLY:O	2.30	0.50
1:B:456:ARG:O	1:B:457:ILE:HD13	2.12	0.50
1:C:399:ARG:NH1	1:C:400:ASP:OD2	2.45	0.50
1:C:452:TYR:CD1	1:C:492:GLY:HA3	2.47	0.50
1:B:349:VAL:HG13	1:B:407:VAL:HG21	1.93	0.50
1:D:572:PHE:HA	1:D:577:LYS:O	2.12	0.50
1:C:33:TRP:O	1:C:127:ARG:NH1	2.45	0.49
1:C:274:ARG:HD2	1:C:274:ARG:C	2.36	0.49
1:C:533:MET:O	1:C:533:MET:HG2	2.04	0.49
2:C:701:CBW:C19	2:C:701:CBW:C25	2.85	0.49
1:B:178:VAL:HG22	1:B:182:HIS:HB3	1.92	0.49
1:A:181:GLN:HB2	1:A:264:ILE:CD1	2.41	0.49
1:A:78:SER:O	1:A:79:GLU:HB2	2.12	0.49
1:D:509:ASP:HB3	1:D:522:TRP:CZ3	2.48	0.49
1:C:461:PHE:O	1:C:499:LYS:NZ	2.38	0.49
1:D:141:ILE:CD1	1:D:355:PRO:CB	2.86	0.49
1:D:258:ASP:HB3	1:D:264:ILE:HD11	1.94	0.49
1:A:162:ASP:CG	3:A:702:GCU:H3	2.37	0.49
1:D:321:HIS:NE2	1:D:346:GLN:OE1	2.43	0.49
1:A:31:GLN:HA	1:A:33:TRP:CZ3	2.48	0.48
1:A:474:THR:HG1	1:A:475:GLN:CD	2.19	0.48
1:B:178:VAL:HG22	1:B:182:HIS:CB	2.43	0.48
2:A:701:CBW:C19	2:A:701:CBW:C25	2.85	0.48
1:A:533:MET:HE2	1:A:534:TYR:HD1	1.75	0.48
1:B:274:ARG:HG2	1:B:274:ARG:NH1	2.16	0.48
1:D:4:PRO:HB2	1:D:12:LEU:HD13	1.95	0.48
1:A:44:PRO:HB3	1:B:310:ASP:HB3	1.95	0.48
1:B:349:VAL:HG13	1:B:407:VAL:HG11	1.96	0.48
1:C:332:HIS:O	1:C:355:PRO:HA	2.14	0.48
1:C:430:PRO:HG3	1:C:461:PHE:CE2	2.48	0.48

Continued on next page...

Continued from previous page...

Atom-1	Atom-2	Interatomic distance (Å)	Clash overlap (Å)
1:C:472:TRP:CE3	1:C:508:ALA:HB1	2.48	0.48
1:B:90:THR:HA	1:B:91:HIS:HA	1.66	0.47
1:C:427:ALA:HB3	1:C:428:PRO:HD3	1.96	0.47
1:C:81:ARG:HG3	1:C:117:THR:OG1	2.14	0.47
1:C:191:ASP:HB3	1:C:198:LEU:HD11	1.96	0.47
1:A:326:ASN:OD1	1:A:326:ASN:C	2.57	0.47
1:D:16:ASP:OD2	1:D:172:SER:OG	2.28	0.47
1:A:274:ARG:NH1	1:A:276:VAL:HG22	2.28	0.47
1:A:469:TYR:OH	1:A:505:ASP:HB3	2.14	0.47
1:C:4:PRO:HB2	1:C:12:LEU:HD13	1.97	0.47
1:D:274:ARG:HA	1:D:286:ASN:OD1	2.13	0.47
1:C:349:VAL:CG1	1:C:407:VAL:HG11	2.44	0.47
1:D:96:TYR:HA	1:D:100:ASN:O	2.15	0.47
1:A:162:ASP:OD2	3:A:702:GCU:O3	2.32	0.47
1:B:64:TRP:HH2	1:B:92:HIS:CD2	2.32	0.47
1:A:573:THR:OG1	1:A:577:LYS:HB2	2.15	0.47
1:B:181:GLN:HG2	1:B:207:THR:HG22	1.97	0.47
1:B:326:ASN:C	1:B:326:ASN:OD1	2.58	0.46
1:B:1:MET:O	1:B:85:ARG:NH2	2.47	0.46
1:C:386:ARG:HB2	1:C:425:TYR:CE2	2.50	0.46
1:A:53:PHE:HA	1:B:318:GLN:HG3	1.97	0.46
1:A:197:GLY:CA	1:A:239:VAL:HG11	2.38	0.46
1:C:181:GLN:NE2	1:C:209:GLN:O	2.42	0.46
1:B:231:ASN:OD1	1:B:231:ASN:C	2.57	0.46
1:C:181:GLN:HG2	1:C:207:THR:CG2	2.46	0.46
2:C:701:CBW:C19	2:C:701:CBW:C26	2.85	0.46
1:D:32:PRO:HD2	1:D:33:TRP:CE3	2.50	0.46
1:A:467:ASN:O	1:A:468:ARG:NH1	2.39	0.46
1:B:470:PHE:HB3	1:B:530:MET:HE3	1.98	0.46
1:D:331:SER:HA	1:D:332:HIS:HA	1.77	0.46
1:B:406:VAL:O	1:B:440:ARG:NE	2.33	0.46
1:B:465:CYS:HA	1:B:502:VAL:O	2.16	0.46
1:A:89:ALA:HB1	1:A:132:VAL:CG2	2.46	0.45
1:B:141:ILE:HD12	1:B:141:ILE:HA	1.71	0.45
1:B:260:SER:OG	1:B:261:LYS:N	2.49	0.45
1:B:257:ILE:HD13	1:B:263:THR:HA	1.97	0.45
1:D:337:GLU:HG3	4:D:732:HOH:O	2.16	0.45
1:B:564:VAL:O	1:B:568:LYS:NZ	2.50	0.45
1:C:16:ASP:OD2	1:C:172:SER:OG	2.28	0.45
1:C:452:TYR:CE1	1:C:492:GLY:HA3	2.50	0.45
1:A:443:THR:OG1	1:A:444:PHE:N	2.50	0.45

Continued on next page...

Continued from previous page...

Atom-1	Atom-2	Interatomic distance (Å)	Clash overlap (Å)
2:A:701:CBW:C19	2:A:701:CBW:C26	2.85	0.45
1:D:426:PHE:O	1:D:430:PRO:HD2	2.17	0.45
1:D:208:THR:O	1:D:210:GLY:O	2.34	0.45
1:B:181:GLN:HG2	1:B:207:THR:HG21	1.99	0.45
1:C:32:PRO:HG2	1:C:66:TYR:CD2	2.52	0.45
1:C:533:MET:CE	1:C:534:TYR:CD1	3.00	0.45
1:D:19:TRP:CE2	1:D:45:VAL:HG21	2.52	0.45
1:A:447:VAL:CG2	2:A:701:CBW:H5	2.47	0.45
1:D:509:ASP:HB3	1:D:522:TRP:CH2	2.52	0.45
1:D:521:PRO:O	1:D:522:TRP:CB	2.64	0.45
1:C:380:ARG:O	1:C:381:ILE:C	2.58	0.45
1:B:244:PRO:O	1:B:245:GLY:C	2.54	0.44
1:B:94:ARG:HB2	1:B:131:ALA:HB3	1.99	0.44
1:C:90:THR:HA	1:C:91:HIS:HA	1.68	0.44
1:C:162:ASP:CB	3:C:702:GCU:H3	2.41	0.44
1:C:414:ASP:CG	2:C:701:CBW:H242	2.42	0.44
1:A:25:SER:OG	1:A:26:ASP:N	2.50	0.44
1:A:90:THR:HA	1:A:91:HIS:HA	1.73	0.44
1:A:4:PRO:HB2	1:A:12:LEU:HD13	1.99	0.44
1:C:321:HIS:NE2	1:C:346:GLN:OE1	2.41	0.44
1:B:45:VAL:O	1:B:169:LEU:O	2.36	0.44
1:C:414:ASP:OD2	2:C:701:CBW:H242	2.18	0.44
1:C:449:LEU:HD21	2:C:701:CBW:C34	2.44	0.44
1:D:207:THR:OG1	1:D:208:THR:N	2.51	0.44
1:D:503:MET:HG2	1:D:544:MET:HE1	1.99	0.44
1:B:92:HIS:HB3	1:B:133:ASP:HB3	1.98	0.44
1:B:573:THR:OG1	1:B:577:LYS:HB2	2.16	0.44
1:C:29:ASN:O	1:C:30:THR:O	2.31	0.44
1:A:141:ILE:CG2	1:A:142:PRO:HD2	2.47	0.44
2:C:701:CBW:O11	2:C:701:CBW:H11C	2.18	0.44
1:A:6:GLN:NE2	1:B:72:ILE:O	2.50	0.43
1:A:32:PRO:HG2	1:A:66:TYR:CE2	2.51	0.43
1:B:577:LYS:HG3	1:C:515:HIS:O	2.18	0.43
1:C:414:ASP:OD2	2:C:701:CBW:C24	2.66	0.43
1:D:470:PHE:HD2	1:D:474:THR:CG2	2.31	0.43
1:A:449:LEU:HB2	2:A:701:CBW:H271	2.00	0.43
1:A:456:ARG:O	1:A:457:ILE:HD13	2.18	0.43
1:C:178:VAL:HG11	1:C:182:HIS:CD2	2.52	0.43
1:D:335:TYR:O	1:D:399:ARG:NH2	2.38	0.43
1:B:509:ASP:HB3	1:B:522:TRP:CZ3	2.53	0.43
1:A:21:PHE:HA	1:A:66:TYR:O	2.19	0.43

Continued on next page...

Continued from previous page...

Atom-1	Atom-2	Interatomic distance (Å)	Clash overlap (Å)
1:D:292:PHE:HB2	1:D:546:GLY:HA3	2.01	0.43
1:A:33:TRP:O	1:A:127:ARG:NH1	2.51	0.43
1:B:427:ALA:HB3	1:B:428:PRO:HD3	2.01	0.43
1:C:294:GLY:HA3	1:C:327:SER:O	2.18	0.43
1:D:68:GLN:CD	1:D:127:ARG:HD3	2.43	0.43
2:A:701:CBW:O11	2:A:701:CBW:H11C	2.18	0.43
1:C:474:THR:OG1	1:C:475:GLN:OE1	2.30	0.43
1:D:427:ALA:HB3	1:D:428:PRO:HD3	2.00	0.43
1:B:381:ILE:CD1	1:B:381:ILE:N	2.82	0.43
2:A:701:CBW:O11	2:A:701:CBW:H193	2.19	0.42
1:C:53:PHE:HA	1:D:318:GLN:HG3	2.00	0.42
2:C:701:CBW:O11	2:C:701:CBW:H193	2.19	0.42
1:A:43:CYS:HB2	1:A:53:PHE:HZ	1.85	0.42
1:A:274:ARG:NH1	1:A:276:VAL:CG2	2.82	0.42
1:A:426:PHE:O	1:A:430:PRO:HD2	2.20	0.42
1:A:89:ALA:HB1	1:A:132:VAL:HG22	2.00	0.42
1:A:236:ILE:O	1:A:239:VAL:HG13	2.20	0.42
1:B:258:ASP:OD1	1:B:258:ASP:C	2.63	0.42
1:A:45:VAL:HG13	1:A:46:PRO:N	2.34	0.42
1:A:81:ARG:HG3	1:A:117:THR:OG1	2.20	0.42
1:A:73:VAL:O	1:A:123:GLY:N	2.48	0.42
1:A:159:TYR:CD2	1:A:161:HIS:CE1	3.07	0.42
1:C:217:ILE:HD12	1:C:253:HIS:CE1	2.55	0.42
1:D:78:SER:O	1:D:79:GLU:CB	2.68	0.42
1:B:64:TRP:CZ2	1:B:92:HIS:HD2	2.37	0.42
1:A:197:GLY:H	1:A:239:VAL:CG1	2.28	0.41
1:A:469:TYR:CE1	2:A:701:CBW:H21C	2.54	0.41
1:B:300:ASP:OD2	1:B:555:PHE:HA	2.19	0.41
1:C:239:VAL:HG12	1:C:240:HIS:C	2.45	0.41
1:D:90:THR:HA	1:D:91:HIS:HA	1.64	0.41
1:D:97:VAL:HG21	1:D:116:ILE:HG21	2.02	0.41
1:B:274:ARG:HA	1:B:286:ASN:OD1	2.21	0.41
1:C:68:GLN:NE2	1:C:127:ARG:HD2	2.34	0.41
1:C:141:ILE:HA	1:C:141:ILE:HD12	1.56	0.41
1:C:162:ASP:HB2	3:C:702:GCU:O3	2.19	0.41
1:C:357:VAL:HG22	1:C:358:GLY:N	2.34	0.41
1:A:92:HIS:O	1:A:132:VAL:HA	2.20	0.41
1:A:413:ASN:HD22	1:A:445:ALA:HB3	1.85	0.41
1:A:345:ARG:NH1	1:B:42:GLU:OE2	2.53	0.41
1:C:197:GLY:N	1:C:239:VAL:HG23	2.35	0.41
1:C:283:PHE:HZ	1:C:407:VAL:HG22	1.85	0.41

Continued on next page...

Continued from previous page...

Atom-1	Atom-2	Interatomic distance (Å)	Clash overlap (Å)
2:A:701:CBW:H152	2:A:701:CBW:H262	1.79	0.41
1:D:577:LYS:HD3	1:D:577:LYS:HA	1.77	0.41
1:A:38:LYS:O	1:A:39:THR:HG23	2.20	0.41
1:A:345:ARG:HD2	1:B:42:GLU:OE1	2.21	0.41
1:A:569:LYS:NZ	3:A:702:GCU:O6A	2.52	0.41
1:A:1:MET:O	1:A:85:ARG:NH2	2.46	0.41
1:A:68:GLN:NE2	1:A:127:ARG:HD2	2.36	0.41
1:B:487:GLU:HG2	1:B:491:ARG:NH2	2.36	0.41
1:B:521:PRO:O	1:B:522:TRP:CB	2.64	0.41
2:C:701:CBW:H262	2:C:701:CBW:H152	1.80	0.41
1:D:465:CYS:HA	1:D:502:VAL:O	2.20	0.41
1:D:470:PHE:HB3	1:D:530:MET:HE3	2.02	0.41
1:D:141:ILE:HG23	1:D:388:ALA:HB1	2.02	0.41
1:D:349:VAL:CG1	1:D:407:VAL:HG11	2.40	0.41
1:D:564:VAL:O	1:D:568:LYS:NZ	2.53	0.41
1:A:521:PRO:HG2	1:C:559:VAL:HG13	2.02	0.40
1:A:399:ARG:NH1	1:A:400:ASP:OD2	2.54	0.40
1:C:141:ILE:CG2	1:C:142:PRO:CD	2.90	0.40
1:D:141:ILE:HD12	1:D:142:PRO:CD	2.44	0.40
1:D:256:ILE:HG22	1:D:264:ILE:HD12	2.02	0.40
1:B:329:ARG:NH1	1:B:504:THR:HB	2.37	0.40
1:C:1:MET:HB2	1:C:113:GLU:OE2	2.21	0.40
1:B:82:TYR:OH	1:B:120:VAL:O	2.39	0.40
1:D:236:ILE:HA	1:D:237:PRO:HD2	1.87	0.40
1:C:181:GLN:HG2	1:C:207:THR:HG22	2.03	0.40
1:D:361:PHE:CE1	1:D:381:ILE:HD13	2.48	0.40

There are no symmetry-related clashes.

5.3 Torsion angles

5.3.1 Protein backbone

In the following table, the Percentiles column shows the percent Ramachandran outliers of the chain as a percentile score with respect to all X-ray entries followed by that with respect to entries of similar resolution.

The Analysed column shows the number of residues for which the backbone conformation was analysed, and the total number of residues.

Mol	Chain	Analysed	Favoured	Allowed	Outliers	Percentiles	
1	A	579/637 (91%)	547 (94%)	28 (5%)	4 (1%)	18	35
1	B	578/637 (91%)	548 (95%)	28 (5%)	2 (0%)	36	56
1	C	579/637 (91%)	538 (93%)	35 (6%)	6 (1%)	12	26
1	D	578/637 (91%)	548 (95%)	28 (5%)	2 (0%)	36	56
All	All	2314/2548 (91%)	2181 (94%)	119 (5%)	14 (1%)	21	39

All (14) Ramachandran outliers are listed below:

Mol	Chain	Res	Type
1	D	303	ILE
1	B	39	THR
1	C	332	HIS
1	D	209	GLN
1	A	29	ASN
1	A	331	SER
1	A	332	HIS
1	B	260	SER
1	C	28	ASN
1	C	331	SER
1	C	30	THR
1	C	381	ILE
1	C	46	PRO
1	A	244	PRO

5.3.2 Protein sidechains [i](#)

In the following table, the Percentiles column shows the percent sidechain outliers of the chain as a percentile score with respect to all X-ray entries followed by that with respect to entries of similar resolution.

The Analysed column shows the number of residues for which the sidechain conformation was analysed, and the total number of residues.

Mol	Chain	Analysed	Rotameric	Outliers	Percentiles	
1	A	493/531 (93%)	485 (98%)	8 (2%)	55	78
1	B	492/531 (93%)	482 (98%)	10 (2%)	48	73
1	C	493/531 (93%)	485 (98%)	8 (2%)	55	78
1	D	492/531 (93%)	480 (98%)	12 (2%)	43	69
All	All	1970/2124 (93%)	1932 (98%)	38 (2%)	50	74

All (38) residues with a non-rotameric sidechain are listed below:

Mol	Chain	Res	Type
1	A	156	VAL
1	A	198	LEU
1	A	200	ASP
1	A	222	THR
1	A	257	ILE
1	A	411	ILE
1	A	495	GLU
1	A	529	GLU
1	B	45	VAL
1	B	52	ILE
1	B	106	VAL
1	B	156	VAL
1	B	162	ASP
1	B	224	VAL
1	B	274	ARG
1	B	303	ILE
1	B	381	ILE
1	B	571	VAL
1	C	39	THR
1	C	231	ASN
1	C	257	ILE
1	C	274	ARG
1	C	375	THR
1	C	411	ILE
1	C	503	MET
1	C	571	VAL
1	D	52	ILE
1	D	141	ILE
1	D	156	VAL
1	D	162	ASP
1	D	224	VAL
1	D	251	GLN
1	D	257	ILE
1	D	274	ARG
1	D	381	ILE
1	D	495	GLU
1	D	559	VAL
1	D	571	VAL

Sometimes sidechains can be flipped to improve hydrogen bonding and reduce clashes. All (25) such sidechains are listed below:

Mol	Chain	Res	Type
1	A	181	GLN
1	A	240	HIS
1	A	308	HIS
1	A	398	HIS
1	A	413	ASN
1	B	29	ASN
1	B	92	HIS
1	B	181	GLN
1	B	184	GLN
1	B	308	HIS
1	B	332	HIS
1	B	391	GLN
1	B	398	HIS
1	B	548	GLN
1	C	36	GLN
1	C	251	GLN
1	C	302	ASN
1	C	308	HIS
1	C	332	HIS
1	C	391	GLN
1	D	160	GLN
1	D	181	GLN
1	D	302	ASN
1	D	308	HIS
1	D	318	GLN

5.3.3 RNA [i](#)

There are no RNA molecules in this entry.

5.4 Non-standard residues in protein, DNA, RNA chains [i](#)

There are no non-standard protein/DNA/RNA residues in this entry.

5.5 Carbohydrates [i](#)

There are no oligosaccharides in this entry.

5.6 Ligand geometry [i](#)

4 ligands are modelled in this entry.

In the following table, the Counts columns list the number of bonds (or angles) for which Mogul statistics could be retrieved, the number of bonds (or angles) that are observed in the model and the number of bonds (or angles) that are defined in the Chemical Component Dictionary. The Link column lists molecule types, if any, to which the group is linked. The Z score for a bond length (or angle) is the number of standard deviations the observed value is removed from the expected value. A bond length (or angle) with $|Z| > 2$ is considered an outlier worth inspection. RMSZ is the root-mean-square of all Z scores of the bond lengths (or angles).

Mol	Type	Chain	Res	Link	Bond lengths			Bond angles		
					Counts	RMSZ	$\# Z > 2$	Counts	RMSZ	$\# Z > 2$
3	GCU	C	702	2	12,12,13	0.93	0	14,17,19	1.05	1 (7%)
3	GCU	A	702	2	12,12,13	0.91	0	14,17,19	1.06	1 (7%)
2	CBW	A	701	3	38,38,38	3.00	12 (31%)	67,67,67	2.24	18 (26%)
2	CBW	C	701	3	38,38,38	3.01	12 (31%)	67,67,67	2.33	20 (29%)

In the following table, the Chirals column lists the number of chiral outliers, the number of chiral centers analysed, the number of these observed in the model and the number defined in the Chemical Component Dictionary. Similar counts are reported in the Torsion and Rings columns. '-' means no outliers of that kind were identified.

Mol	Type	Chain	Res	Link	Chirals	Torsions	Rings
3	GCU	C	702	2	-	0/4/21/24	0/1/1/1
3	GCU	A	702	2	-	0/4/21/24	0/1/1/1
2	CBW	A	701	3	-	0/6/100/100	0/5/5/5
2	CBW	C	701	3	-	2/6/100/100	0/5/5/5

All (24) bond length outliers are listed below:

Mol	Chain	Res	Type	Atoms	Z	Observed(Å)	Ideal(Å)
2	A	701	CBW	C9-C11	-9.65	1.41	1.52
2	C	701	CBW	C9-C11	-9.64	1.41	1.52
2	C	701	CBW	C7-C8	-8.80	1.39	1.54
2	A	701	CBW	C7-C8	-8.76	1.39	1.54
2	C	701	CBW	C15-C14	-5.29	1.46	1.54
2	A	701	CBW	C15-C14	-5.17	1.47	1.54
2	A	701	CBW	C1-C10	-5.15	1.45	1.54
2	C	701	CBW	C1-C10	-5.10	1.45	1.54
2	A	701	CBW	C7-C6	-5.01	1.43	1.53
2	C	701	CBW	C7-C6	-5.00	1.43	1.53
2	A	701	CBW	C8-C9	-4.29	1.52	1.56
2	C	701	CBW	C8-C9	-4.25	1.52	1.56
2	A	701	CBW	C8-C14	4.01	1.65	1.59
2	C	701	CBW	C8-C14	4.00	1.65	1.59

Continued on next page...

Continued from previous page...

Mol	Chain	Res	Type	Atoms	Z	Observed(Å)	Ideal(Å)
2	A	701	CBW	C10-C9	3.84	1.62	1.57
2	C	701	CBW	C10-C9	3.79	1.62	1.57
2	C	701	CBW	C17-C18	-2.57	1.51	1.55
2	A	701	CBW	C17-C18	-2.47	1.51	1.55
2	A	701	CBW	C14-C13	-2.36	1.49	1.53
2	C	701	CBW	C14-C13	-2.33	1.49	1.53
2	C	701	CBW	C16-C15	2.14	1.59	1.53
2	A	701	CBW	C10-C5	-2.13	1.53	1.56
2	C	701	CBW	C10-C5	-2.12	1.53	1.56
2	A	701	CBW	C16-C15	2.12	1.59	1.53

All (40) bond angle outliers are listed below:

Mol	Chain	Res	Type	Atoms	Z	Observed(°)	Ideal(°)
2	C	701	CBW	C8-C9-C10	-10.57	110.78	118.01
2	A	701	CBW	C8-C9-C10	-10.56	110.78	118.01
2	C	701	CBW	C4-C5-C10	-5.82	111.92	117.18
2	A	701	CBW	C4-C5-C10	-5.81	111.92	117.18
2	C	701	CBW	C34-C21-C20	4.33	116.86	109.59
2	C	701	CBW	C20-C18-C17	-4.07	109.95	113.11
2	C	701	CBW	C21-C20-C18	4.06	119.48	113.65
2	A	701	CBW	C34-C21-C20	3.85	116.06	109.59
2	A	701	CBW	C20-C18-C17	-3.51	110.39	113.11
2	A	701	CBW	C15-C16-C17	-3.46	106.30	113.88
2	C	701	CBW	C15-C16-C17	-3.43	106.35	113.88
2	C	701	CBW	C6-C7-C8	3.38	118.68	112.85
2	A	701	CBW	C6-C7-C8	3.37	118.66	112.85
2	C	701	CBW	C27-C14-C8	-3.34	109.33	112.31
2	A	701	CBW	C27-C14-C8	-3.31	109.36	112.31
2	A	701	CBW	C22-C21-C20	-3.27	102.67	109.08
2	C	701	CBW	C1-C10-C9	3.04	111.15	108.19
2	A	701	CBW	C1-C10-C9	3.04	111.15	108.19
2	A	701	CBW	C10-C9-C11	-2.93	113.27	115.61
2	C	701	CBW	C10-C9-C11	-2.92	113.28	115.61
2	C	701	CBW	C22-C21-C20	-2.80	103.60	109.08
2	C	701	CBW	C2-C3-C4	-2.50	110.84	113.33
2	A	701	CBW	C2-C3-C4	-2.49	110.85	113.33
2	A	701	CBW	C27-C14-C13	2.41	109.36	106.96
2	C	701	CBW	C34-C21-C33	-2.37	98.70	105.75
3	A	702	GCU	O5-C5-C6	2.37	115.05	106.59
3	C	702	GCU	O5-C5-C6	2.36	115.01	106.59
2	C	701	CBW	C27-C14-C13	2.35	109.31	106.96

Continued on next page...

Continued from previous page...

Mol	Chain	Res	Type	Atoms	Z	Observed(°)	Ideal(°)
2	A	701	CBW	C1-C2-C3	-2.31	108.11	111.48
2	C	701	CBW	C1-C2-C3	-2.29	108.13	111.48
2	C	701	CBW	O11-C11-C9	-2.17	120.59	123.33
2	A	701	CBW	O11-C11-C9	-2.17	120.60	123.33
2	A	701	CBW	C9-C11-C12	2.16	118.78	116.79
2	A	701	CBW	C20-C21-C33	2.14	115.64	110.90
2	C	701	CBW	C9-C11-C12	2.14	118.76	116.79
2	C	701	CBW	C22-C23-C17	2.08	118.44	113.88
2	A	701	CBW	C14-C8-C9	-2.08	106.40	107.93
2	C	701	CBW	C14-C8-C9	-2.07	106.40	107.93
2	A	701	CBW	C34-C21-C33	-2.06	99.62	105.75
2	C	701	CBW	C23-C22-C21	-2.01	108.98	112.70

There are no chirality outliers.

All (2) torsion outliers are listed below:

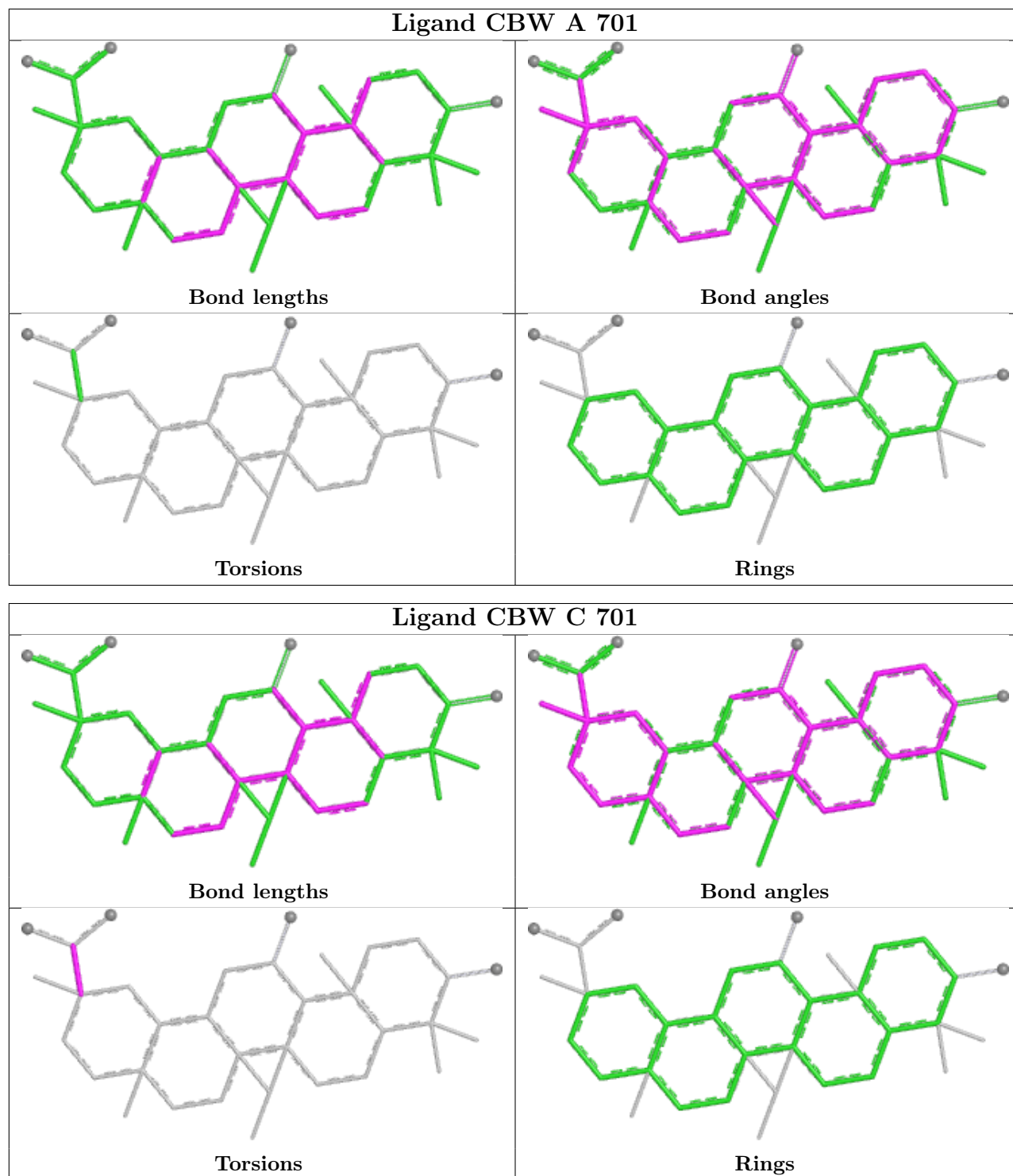
Mol	Chain	Res	Type	Atoms
2	C	701	CBW	C34-C21-C33-O34
2	C	701	CBW	C20-C21-C33-O34

There are no ring outliers.

4 monomers are involved in 59 short contacts:

Mol	Chain	Res	Type	Clashes	Symm-Clashes
3	C	702	GCU	10	0
3	A	702	GCU	10	0
2	A	701	CBW	19	0
2	C	701	CBW	26	0

The following is a two-dimensional graphical depiction of Mogul quality analysis of bond lengths, bond angles, torsion angles, and ring geometry for all instances of the Ligand of Interest. In addition, ligands with molecular weight > 250 and outliers as shown on the validation Tables will also be included. For torsion angles, if less than 5% of the Mogul distribution of torsion angles is within 10 degrees of the torsion angle in question, then that torsion angle is considered an outlier. Any bond that is central to one or more torsion angles identified as an outlier by Mogul will be highlighted in the graph. For rings, the root-mean-square deviation (RMSD) between the ring in question and similar rings identified by Mogul is calculated over all ring torsion angles. If the average RMSD is greater than 60 degrees and the minimal RMSD between the ring in question and any Mogul-identified rings is also greater than 60 degrees, then that ring is considered an outlier. The outliers are highlighted in purple. The color gray indicates Mogul did not find sufficient equivalents in the CSD to analyse the geometry.



5.7 Other polymers ⓘ

There are no such residues in this entry.

5.8 Polymer linkage issues ⓘ

There are no chain breaks in this entry.

6 Fit of model and data ⓘ

6.1 Protein, DNA and RNA chains ⓘ

In the following table, the column labelled ‘#RSRZ > 2’ contains the number (and percentage) of RSRZ outliers, followed by percent RSRZ outliers for the chain as percentile scores relative to all X-ray entries and entries of similar resolution. The OWAB column contains the minimum, median, 95th percentile and maximum values of the occupancy-weighted average B-factor per residue. The column labelled ‘Q < 0.9’ lists the number of (and percentage) of residues with an average occupancy less than 0.9.

Mol	Chain	Analysed	<RSRZ>	#RSRZ>2	OWAB(Å ²)	Q<0.9
1	A	583/637 (91%)	-0.48	11 (1%) 66 62	4, 11, 29, 105	0
1	B	582/637 (91%)	-0.50	12 (2%) 63 59	4, 13, 32, 95	0
1	C	583/637 (91%)	-0.44	15 (2%) 57 52	3, 12, 32, 99	0
1	D	582/637 (91%)	-0.54	9 (1%) 72 68	3, 11, 28, 64	0
All	All	2330/2548 (91%)	-0.49	47 (2%) 65 60	3, 12, 31, 105	0

All (47) RSRZ outliers are listed below:

Mol	Chain	Res	Type	RSRZ
1	C	28	ASN	7.1
1	C	593	HIS	6.9
1	A	28	ASN	6.8
1	C	373	PRO	6.5
1	A	593	HIS	6.3
1	B	28	ASN	6.0
1	C	29	ASN	5.5
1	A	29	ASN	5.0
1	D	141	ILE	5.0
1	B	592	LEU	4.9
1	A	373	PRO	4.5
1	C	30	THR	4.4
1	B	208	THR	4.0
1	C	27	ASP	3.9
1	B	29	ASN	3.9
1	A	45	VAL	3.7
1	B	141	ILE	3.7
1	C	592	LEU	3.6
1	B	261	LYS	3.5
1	B	27	ASP	3.4
1	A	30	THR	3.4

Continued on next page...

Continued from previous page...

Mol	Chain	Res	Type	RSRZ
1	D	45	VAL	3.4
1	A	362	SER	3.3
1	B	561	VAL	3.3
1	B	38	LYS	3.2
1	C	209	GLN	3.2
1	A	592	LEU	3.1
1	B	245	GLY	3.1
1	C	26	ASP	3.1
1	B	209	GLN	3.1
1	D	261	LYS	3.1
1	B	26	ASP	2.9
1	D	561	VAL	2.9
1	C	141	ILE	2.8
1	D	38	LYS	2.7
1	A	141	ILE	2.7
1	C	208	THR	2.7
1	C	207	THR	2.6
1	A	208	THR	2.4
1	A	38	LYS	2.3
1	D	245	GLY	2.3
1	C	162	ASP	2.3
1	C	474	THR	2.3
1	D	208	THR	2.2
1	C	45	VAL	2.1
1	D	79	GLU	2.0
1	D	475	GLN	2.0

6.2 Non-standard residues in protein, DNA, RNA chains [i](#)

There are no non-standard protein/DNA/RNA residues in this entry.

6.3 Carbohydrates [i](#)

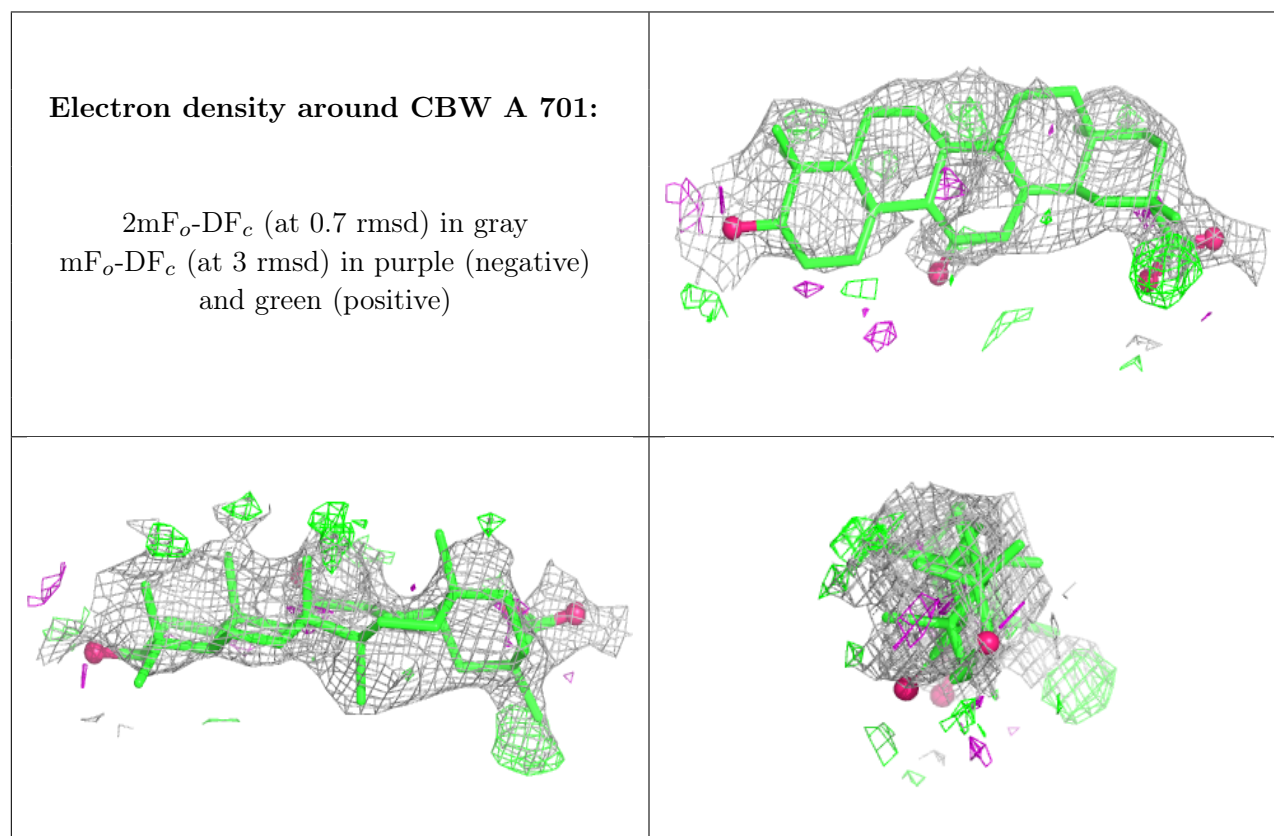
There are no oligosaccharides in this entry.

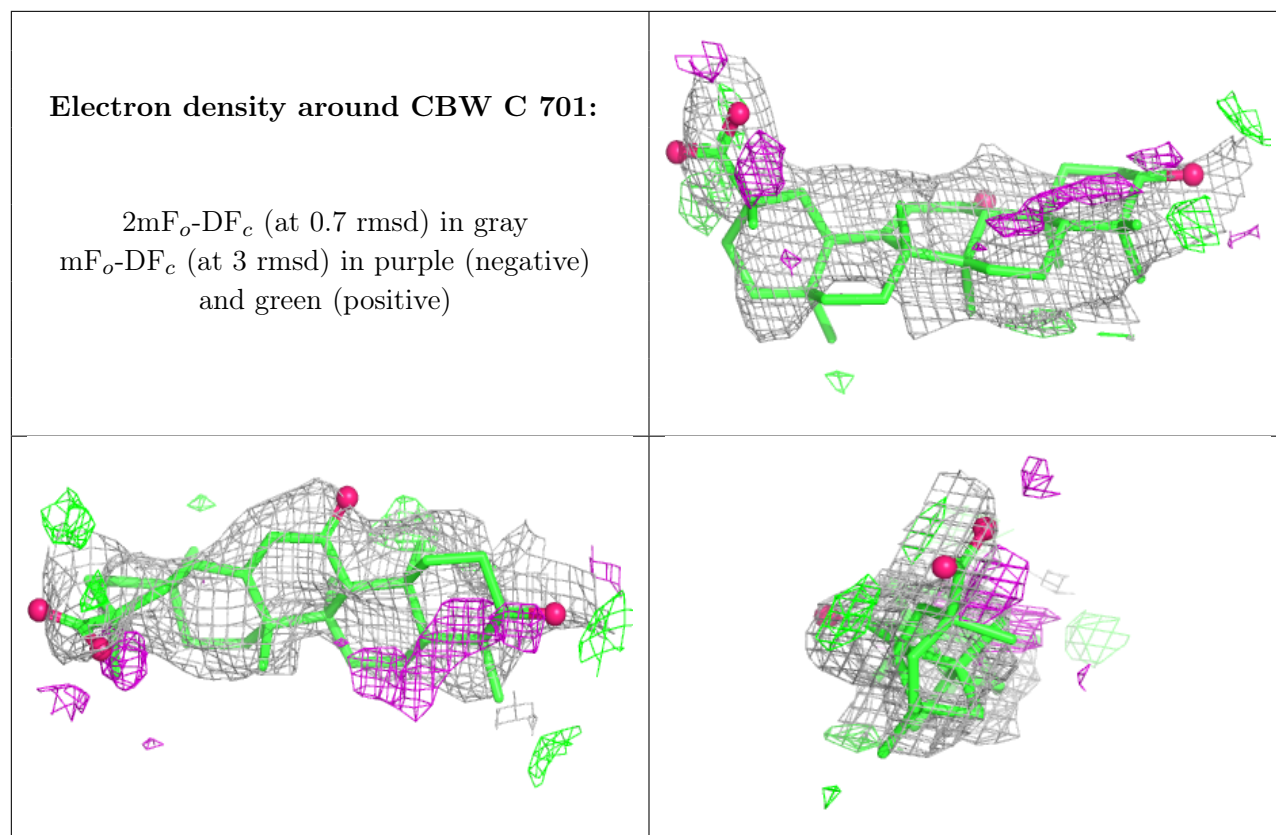
6.4 Ligands [i](#)

In the following table, the Atoms column lists the number of modelled atoms in the group and the number defined in the chemical component dictionary. The B-factors column lists the minimum, median, 95th percentile and maximum values of B factors of atoms in the group. The column labelled 'Q< 0.9' lists the number of atoms with occupancy less than 0.9.

Mol	Type	Chain	Res	Atoms	RSCC	RSR	B-factors(\AA^2)	Q<0.9
2	CBW	A	701	34/34	0.60	0.28	49,72,84,85	0
2	CBW	C	701	34/34	0.60	0.28	45,70,86,87	0
3	GCU	C	702	12/13	0.70	0.25	28,42,56,56	0
3	GCU	A	702	12/13	0.78	0.21	22,42,70,78	0

The following is a graphical depiction of the model fit to experimental electron density of all instances of the Ligand of Interest. In addition, ligands with molecular weight > 250 and outliers as shown on the geometry validation Tables will also be included. Each fit is shown from different orientation to approximate a three-dimensional view.





6.5 Other polymers [i](#)

There are no such residues in this entry.