



Full wwPDB X-ray Structure Validation Report ⓘ

Mar 8, 2026 – 03:51 AM UTC

PDB ID : 5DLB / pdb_00005dlb
Title : Crystal structure of chaperone EspG3 of ESX-3 type VII secretion system from Mycobacterium marinum M
Authors : Chan, S.; Arbing, M.A.; Kim, J.; Kahng, S.; Sawaya, M.R.; Eisenberg, D.S.; TB Structural Genomics Consortium (TBSGC)
Deposited on : 2015-09-04
Resolution : 1.77 Å(reported)

This is a Full wwPDB X-ray Structure Validation Report for a publicly released PDB entry.

We welcome your comments at validation@mail.wwpdb.org

A user guide is available at

<https://www.wwpdb.org/validation/2017/XrayValidationReportHelp>

with specific help available everywhere you see the ⓘ symbol.

The types of validation reports are described at

<http://www.wwpdb.org/validation/2017/FAQs#types>.

The following versions of software and data (see [references ⓘ](#)) were used in the production of this report:

MolProbity	:	4-5-2 with Phenix2.0
Mogul	:	2022.3.0, CSD as543be (2022)
Xtriage (Phenix)	:	2.0
EDS	:	3.0
Percentile statistics	:	20250101.v01 (using entries in the PDB archive January 1st 2025)
CCP4	:	9.0.010 (Gargrove)
Density-Fitness	:	1.0.12
Ideal geometry (proteins)	:	Engh & Huber (2001)
Ideal geometry (DNA, RNA)	:	Parkinson et al. (1996)
Validation Pipeline (wwPDB-VP)	:	2.49

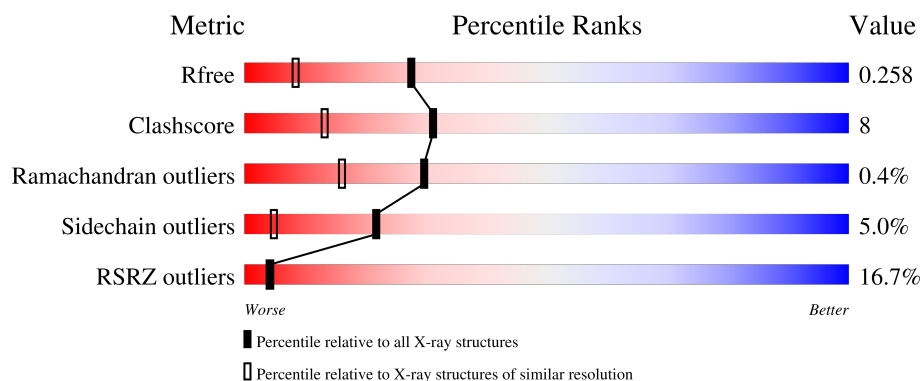
1 Overall quality at a glance

The following experimental techniques were used to determine the structure:

X-RAY DIFFRACTION

The reported resolution of this entry is 1.77 Å.

Percentile scores (ranging between 0-100) for global validation metrics of the entry are shown in the following graphic. The table shows the number of entries on which the scores are based.



Metric	Whole archive (#Entries)	Similar resolution (#Entries, resolution range(Å))
R_{free}	180053	1365 (1.78-1.78)
Clashscore	190562	1395 (1.78-1.78)
Ramachandran outliers	187476	1382 (1.78-1.78)
Sidechain outliers	187428	1382 (1.78-1.78)
RSRZ outliers	180081	1365 (1.78-1.78)

The table below summarises the geometric issues observed across the polymeric chains and their fit to the electron density. The red, orange, yellow and green segments of the lower bar indicate the fraction of residues that contain outliers for ≥ 3 , 2, 1 and 0 types of geometric quality criteria respectively. A grey segment represents the fraction of residues that are not modelled. The numeric value for each fraction is indicated below the corresponding segment, with a dot representing fractions $\leq 5\%$. The upper red bar (where present) indicates the fraction of residues that have poor fit to the electron density. The numeric value is given above the bar.

Mol	Chain	Length	Quality of chain
1	A	315	

The following table lists non-polymeric compounds, carbohydrate monomers and non-standard residues in protein, DNA, RNA chains that are outliers for geometric or electron-density-fit criteria:

Mol	Type	Chain	Res	Chirality	Geometry	Clashes	Electron density
6	SCN	A	315	-	-	X	-

Continued on next page...

Continued from previous page...

Mol	Type	Chain	Res	Chirality	Geometry	Clashes	Electron density
6	SCN	A	317	-	-	X	-
6	SCN	A	326	-	-	X	-
6	SCN	A	340	-	-	X	-

2 Entry composition

There are 7 unique types of molecules in this entry. The entry contains 2149 atoms, of which 0 are hydrogens and 0 are deuteriums.

In the tables below, the ZeroOcc column contains the number of atoms modelled with zero occupancy, the AltConf column contains the number of residues with at least one atom in alternate conformation and the Trace column contains the number of residues modelled with at most 2 atoms.

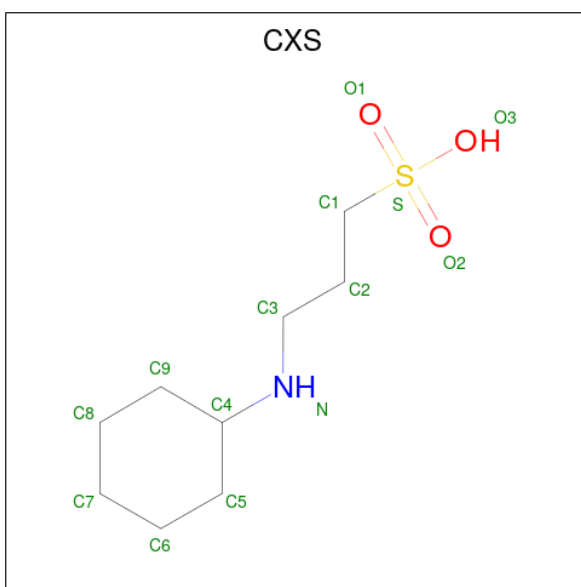
- Molecule 1 is a protein called chaperone EspG3.

Mol	Chain	Residues	Atoms					ZeroOcc	AltConf	Trace
1	A	263	Total	C	N	O	S	0	0	0
			1944	1247	331	359	7			

There are 17 discrepancies between the modelled and reference sequences:

Chain	Residue	Modelled	Actual	Comment	Reference
A	-16	SER	-	expression tag	UNP B2HNX0
A	-15	HIS	-	expression tag	UNP B2HNX0
A	-14	HIS	-	expression tag	UNP B2HNX0
A	-13	HIS	-	expression tag	UNP B2HNX0
A	-12	HIS	-	expression tag	UNP B2HNX0
A	-11	HIS	-	expression tag	UNP B2HNX0
A	-10	HIS	-	expression tag	UNP B2HNX0
A	-9	SER	-	expression tag	UNP B2HNX0
A	-8	SER	-	expression tag	UNP B2HNX0
A	-7	SER	-	expression tag	UNP B2HNX0
A	-6	GLU	-	expression tag	UNP B2HNX0
A	-5	ASN	-	expression tag	UNP B2HNX0
A	-4	LEU	-	expression tag	UNP B2HNX0
A	-3	TYR	-	expression tag	UNP B2HNX0
A	-2	PHE	-	expression tag	UNP B2HNX0
A	-1	GLN	-	expression tag	UNP B2HNX0
A	0	SER	-	expression tag	UNP B2HNX0

- Molecule 2 is 3-CYCLOHEXYL-1-PROPYLSULFONIC ACID (CCD ID: CXS) (formula: $C_9H_{19}NO_3S$).



Mol	Chain	Residues	Atoms					ZeroOcc	AltConf
2	A	1	Total	C	N	O	S	0	0
			14	9	1	3	1		

- Molecule 3 is GLYCEROL (CCD ID: GOL) (formula: $C_3H_8O_3$).



Mol	Chain	Residues	Atoms			ZeroOcc	AltConf
3	A	1	Total	C	O	0	0
			6	3	3		
3	A	1	Total	C	O	0	0
			6	3	3		
3	A	1	Total	C	O	0	0
			6	3	3		

- Molecule 4 is SULFATE ION (CCD ID: SO4) (formula: O₄S).

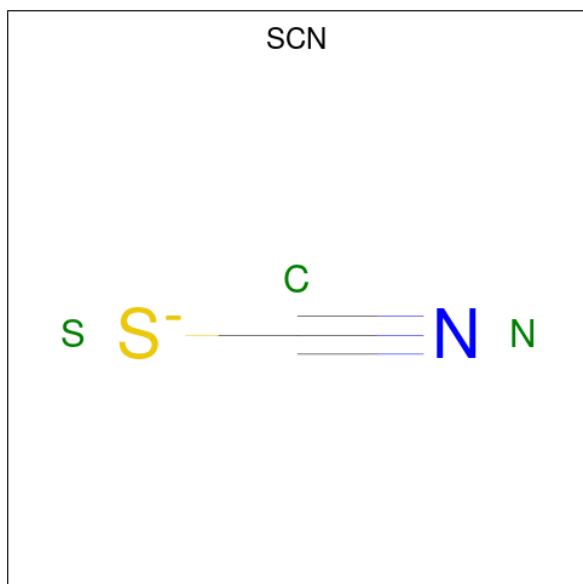


Mol	Chain	Residues	Atoms			ZeroOcc	AltConf
4	A	1	Total	O	S	0	0
			5	4	1		

- Molecule 5 is PLATINUM (II) ION (CCD ID: PT) (formula: Pt).

Mol	Chain	Residues	Atoms		ZeroOcc	AltConf
5	A	7	Total	Pt	0	0
			7	7		

- Molecule 6 is THIOCYANATE ION (CCD ID: SCN) (formula: CNS).



[illegible]

Continued on next page...

Continued from previous page...

Mol	Chain	Residues	Atoms				ZeroOcc	AltConf
6	A	1	Total 3	C 1	N 1	S 1	0	0
6	A	1	Total 3	C 1	N 1	S 1	0	0
6	A	1	Total 3	C 1	N 1	S 1	0	0
6	A	1	Total 3	C 1	N 1	S 1	0	0
6	A	1	Total 3	C 1	N 1	S 1	0	0
6	A	1	Total 3	C 1	N 1	S 1	0	0
6	A	1	Total 3	C 1	N 1	S 1	0	0
6	A	1	Total 3	C 1	N 1	S 1	0	0
6	A	1	Total 3	C 1	N 1	S 1	0	0
6	A	1	Total 3	C 1	N 1	S 1	0	0

- Molecule 7 is water.

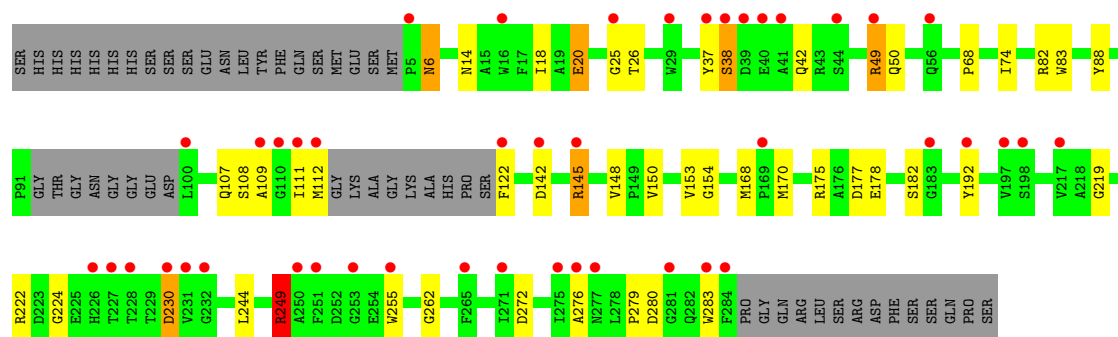
Mol	Chain	Residues	Atoms		ZeroOcc	AltConf
7	A	65	Total 65	O 65	0	0

3 Residue-property plots [i](#)

These plots are drawn for all protein, RNA, DNA and oligosaccharide chains in the entry. The first graphic for a chain summarises the proportions of the various outlier classes displayed in the second graphic. The second graphic shows the sequence view annotated by issues in geometry and electron density. Residues are color-coded according to the number of geometric quality criteria for which they contain at least one outlier: green = 0, yellow = 1, orange = 2 and red = 3 or more. A red dot above a residue indicates a poor fit to the electron density ($RSRZ > 2$). Stretches of 2 or more consecutive residues without any outlier are shown as a green connector. Residues present in the sample, but not in the model, are shown in grey.

- Molecule 1: chaperone EspG3

Chain A: 



4 Data and refinement statistics

Property	Value	Source
Space group	C 1 2 1	Depositor
Cell constants a, b, c, α , β , γ	112.21Å 46.02Å 58.01Å 90.00° 92.24° 90.00°	Depositor
Resolution (Å)	57.96 – 1.77 57.96 – 1.77	Depositor EDS
% Data completeness (in resolution range)	88.5 (57.96-1.77) 88.5 (57.96-1.77)	Depositor EDS
R_{merge}	0.07	Depositor
R_{sym}	(Not available)	Depositor
$\langle I/\sigma(I) \rangle$ ¹	1.62 (at 1.77Å)	Xtriage
Refinement program	REFMAC 5.8.0049	Depositor
R, R_{free}	0.209 , 0.245 0.222 , 0.258	Depositor DCC
R_{free} test set	1310 reflections (5.09%)	wwPDB-VP
Wilson B-factor (Å ²)	29.8	Xtriage
Anisotropy	0.894	Xtriage
Bulk solvent k_{sol} (e/Å ³), B_{sol} (Å ²)	0.39 , 49.8	EDS
L-test for twinning ²	$\langle L \rangle = 0.49$, $\langle L^2 \rangle = 0.32$	Xtriage
Estimated twinning fraction	0.038 for -h,-k,l	Xtriage
F_o, F_c correlation	0.96	EDS
Total number of atoms	2149	wwPDB-VP
Average B, all atoms (Å ²)	40.0	wwPDB-VP

Xtriage's analysis on translational NCS is as follows: *The largest off-origin peak in the Patterson function is 8.22% of the height of the origin peak. No significant pseudotranslation is detected.*

¹Intensities estimated from amplitudes.

²Theoretical values of $\langle |L| \rangle$, $\langle L^2 \rangle$ for acentric reflections are 0.5, 0.333 respectively for untwinned datasets, and 0.375, 0.2 for perfectly twinned datasets.

5 Model quality [i](#)

5.1 Standard geometry [i](#)

Bond lengths and bond angles in the following residue types are not validated in this section: GOL, CXS, SCN, SO4, PT

The Z score for a bond length (or angle) is the number of standard deviations the observed value is removed from the expected value. A bond length (or angle) with $|Z| > 5$ is considered an outlier worth inspection. RMSZ is the root-mean-square of all Z scores of the bond lengths (or angles).

Mol	Chain	Bond lengths		Bond angles	
		RMSZ	$\# Z > 5$	RMSZ	$\# Z > 5$
1	A	1.32	2/1987 (0.1%)	1.28	4/2718 (0.1%)

All (2) bond length outliers are listed below:

Mol	Chain	Res	Type	Atoms	Z	Observed(Å)	Ideal(Å)
1	A	276	ALA	C-O	-6.58	1.16	1.24
1	A	38	SER	CA-C	6.27	1.57	1.52

All (4) bond angle outliers are listed below:

Mol	Chain	Res	Type	Atoms	Z	Observed(°)	Ideal(°)
1	A	148	VAL	N-CA-CB	6.34	114.50	110.50
1	A	20	GLU	CB-CG-CD	6.18	123.11	112.60
1	A	177	ASP	N-CA-CB	5.35	117.76	110.01
1	A	249	ARG	CG-CD-NE	-5.07	100.84	112.00

There are no chirality outliers.

There are no planarity outliers.

5.2 Too-close contacts [i](#)

In the following table, the Non-H and H(model) columns list the number of non-hydrogen atoms and hydrogen atoms in the chain respectively. The H(added) column lists the number of hydrogen atoms added and optimized by MolProbity. The Clashes column lists the number of clashes within the asymmetric unit, whereas Symm-Clashes lists symmetry-related clashes.

Mol	Chain	Non-H	H(model)	H(added)	Clashes	Symm-Clashes
1	A	1944	0	1901	29	0
2	A	14	0	18	0	0

Continued on next page...

Continued from previous page...

Mol	Chain	Non-H	H(model)	H(added)	Clashes	Symm-Clashes
3	A	18	0	24	0	0
4	A	5	0	0	0	0
5	A	7	0	0	0	0
6	A	96	0	0	9	0
7	A	65	0	0	1	0
All	All	2149	0	1943	33	0

The all-atom clashscore is defined as the number of clashes found per 1000 atoms (including hydrogen atoms). The all-atom clashscore for this structure is 8.

All (33) close contacts within the same asymmetric unit are listed below, sorted by their clash magnitude.

Atom-1	Atom-2	Interatomic distance (Å)	Clash overlap (Å)
6:A:340:SCN:N	7:A:401:HOH:O	2.20	0.73
1:A:112:MET:HE2	1:A:122:PHE:HB2	1.81	0.63
1:A:37:TYR:HB2	1:A:42:GLN:HB3	1.84	0.59
1:A:230:ASP:N	1:A:230:ASP:OD1	2.28	0.59
1:A:178:GLU:CB	6:A:330:SCN:C	2.81	0.59
6:A:315:SCN:C	6:A:317:SCN:S	2.92	0.58
1:A:6:ASN:ND2	1:A:6:ASN:H	2.02	0.56
1:A:82:ARG:HD2	1:A:283:TRP:CD1	2.40	0.55
1:A:244:LEU:HG	1:A:262:GLY:HA2	1.89	0.54
1:A:37:TYR:HB2	1:A:42:GLN:CB	2.40	0.52
1:A:249:ARG:HD2	1:A:255:TRP:CZ2	2.46	0.51
1:A:49:ARG:HG2	6:A:326:SCN:S	2.51	0.51
1:A:175:ARG:CZ	1:A:192:TYR:OH	2.60	0.49
1:A:49:ARG:HG2	6:A:326:SCN:C	2.43	0.48
1:A:82:ARG:HD2	1:A:283:TRP:CG	2.48	0.48
1:A:145:ARG:HD2	1:A:145:ARG:C	2.39	0.47
1:A:168:MET:HE3	1:A:168:MET:HB2	1.58	0.47
1:A:279:PRO:O	1:A:280:ASP:C	2.58	0.47
1:A:82:ARG:NH2	1:A:107:GLN:OE1	2.30	0.47
6:A:315:SCN:S	6:A:317:SCN:S	3.15	0.45
1:A:14:ASN:HA	1:A:50:GLN:NE2	2.32	0.43
1:A:170:MET:HE3	6:A:315:SCN:N	2.32	0.43
6:A:324:SCN:C	6:A:327:SCN:S	3.07	0.43
1:A:83:TRP:CE2	1:A:219:GLY:HA3	2.53	0.43
1:A:142:ASP:OD1	1:A:142:ASP:N	2.51	0.43
1:A:38:SER:N	1:A:42:GLN:OE1	2.51	0.43
1:A:88:TYR:CD1	1:A:154:GLY:HA3	2.53	0.43
1:A:222:ARG:C	1:A:224:GLY:H	2.27	0.42

Continued on next page...

Continued from previous page...

Atom-1	Atom-2	Interatomic distance (Å)	Clash overlap (Å)
1:A:25:GLY:C	1:A:26:THR:CG2	2.93	0.42
1:A:18:ILE:HG21	1:A:74:ILE:HD12	2.01	0.42
1:A:150:VAL:O	1:A:153:VAL:HG12	2.20	0.42
1:A:88:TYR:CE1	1:A:154:GLY:HA3	2.55	0.41
1:A:68:PRO:HB3	6:A:340:SCN:N	2.36	0.41

There are no symmetry-related clashes.

5.3 Torsion angles [i](#)

5.3.1 Protein backbone [i](#)

In the following table, the Percentiles column shows the percent Ramachandran outliers of the chain as a percentile score with respect to all X-ray entries followed by that with respect to entries of similar resolution.

The Analysed column shows the number of residues for which the backbone conformation was analysed, and the total number of residues.

Mol	Chain	Analysed	Favoured	Allowed	Outliers	Percentiles
1	A	257/315 (82%)	242 (94%)	14 (5%)	1 (0%)	30 16

All (1) Ramachandran outliers are listed below:

Mol	Chain	Res	Type
1	A	109	ALA

5.3.2 Protein sidechains [i](#)

In the following table, the Percentiles column shows the percent sidechain outliers of the chain as a percentile score with respect to all X-ray entries followed by that with respect to entries of similar resolution.

The Analysed column shows the number of residues for which the sidechain conformation was analysed, and the total number of residues.

Mol	Chain	Analysed	Rotameric	Outliers	Percentiles
1	A	199/256 (78%)	189 (95%)	10 (5%)	22 5

All (10) residues with a non-rotameric sidechain are listed below:

Mol	Chain	Res	Type
1	A	6	ASN
1	A	20	GLU
1	A	49	ARG
1	A	108	SER
1	A	111	ILE
1	A	145	ARG
1	A	182	SER
1	A	230	ASP
1	A	249	ARG
1	A	272	ASP

Sometimes sidechains can be flipped to improve hydrogen bonding and reduce clashes. All (3) such sidechains are listed below:

Mol	Chain	Res	Type
1	A	6	ASN
1	A	14	ASN
1	A	50	GLN

5.3.3 RNA [i](#)

There are no RNA molecules in this entry.

5.4 Non-standard residues in protein, DNA, RNA chains [i](#)

There are no non-standard protein/DNA/RNA residues in this entry.

5.5 Carbohydrates [i](#)

There are no oligosaccharides in this entry.

5.6 Ligand geometry [i](#)

Of 44 ligands modelled in this entry, 7 are monoatomic - leaving 37 for Mogul analysis.

In the following table, the Counts columns list the number of bonds (or angles) for which Mogul statistics could be retrieved, the number of bonds (or angles) that are observed in the model and the number of bonds (or angles) that are defined in the Chemical Component Dictionary. The Link column lists molecule types, if any, to which the group is linked. The Z score for a bond length (or angle) is the number of standard deviations the observed value is removed from the

expected value. A bond length (or angle) with $|Z| > 2$ is considered an outlier worth inspection. RMSZ is the root-mean-square of all Z scores of the bond lengths (or angles).

Mol	Type	Chain	Res	Link	Bond lengths			Bond angles		
					Counts	RMSZ	# Z > 2	Counts	RMSZ	# Z > 2
4	SO4	A	304	-	4,4,4	0.54	0	6,6,6	0.28	0
6	SCN	A	330	-	1,2,2	0.39	0	0,1,1	-	-
6	SCN	A	336	-	1,2,2	0.70	0	0,1,1	-	-
6	SCN	A	335	-	1,2,2	0.66	0	0,1,1	-	-
6	SCN	A	325	-	1,2,2	0.47	0	0,1,1	-	-
6	SCN	A	317	5	1,2,2	0.17	0	0,1,1	-	-
6	SCN	A	315	5	1,2,2	0.15	0	0,1,1	-	-
6	SCN	A	337	-	1,2,2	0.83	0	0,1,1	-	-
6	SCN	A	319	5	1,2,2	0.26	0	0,1,1	-	-
3	GOL	A	305	-	5,5,5	0.30	0	5,5,5	0.38	0
6	SCN	A	316	5	1,2,2	0.39	0	0,1,1	-	-
6	SCN	A	324	5	1,2,2	0.30	0	0,1,1	-	-
6	SCN	A	333	-	1,2,2	0.06	0	0,1,1	-	-
6	SCN	A	328	-	1,2,2	0.33	0	0,1,1	-	-
6	SCN	A	332	-	1,2,2	0.39	0	0,1,1	-	-
6	SCN	A	341	-	1,2,2	0.37	0	0,1,1	-	-
6	SCN	A	343	-	1,2,2	0.24	0	0,1,1	-	-
6	SCN	A	327	-	1,2,2	0.34	0	0,1,1	-	-
6	SCN	A	342	-	1,2,2	0.27	0	0,1,1	-	-
6	SCN	A	322	5	1,2,2	0.04	0	0,1,1	-	-
6	SCN	A	318	5	1,2,2	0.08	0	0,1,1	-	-
6	SCN	A	307	5	1,2,2	0.45	0	0,1,1	-	-
3	GOL	A	302	-	5,5,5	0.48	0	5,5,5	0.31	0
3	GOL	A	303	-	5,5,5	0.39	0	5,5,5	0.34	0
6	SCN	A	338	5	1,2,2	0.46	0	0,1,1	-	-
6	SCN	A	312	5	1,2,2	0.00	0	0,1,1	-	-
6	SCN	A	310	5	1,2,2	0.54	0	0,1,1	-	-
6	SCN	A	311	5	1,2,2	0.07	0	0,1,1	-	-
6	SCN	A	340	5	1,2,2	0.11	0	0,1,1	-	-
6	SCN	A	308	5	1,2,2	0.66	0	0,1,1	-	-
6	SCN	A	321	5	1,2,2	0.35	0	0,1,1	-	-
2	CXS	A	301	-	14,14,14	2.73	2 (14%)	18,18,18	2.44	8 (44%)
6	SCN	A	344	-	1,2,2	0.45	0	0,1,1	-	-
6	SCN	A	309	-	1,2,2	0.52	0	0,1,1	-	-
6	SCN	A	331	5	1,2,2	0.32	0	0,1,1	-	-
6	SCN	A	314	5	1,2,2	0.08	0	0,1,1	-	-
6	SCN	A	326	5	1,2,2	0.20	0	0,1,1	-	-

In the following table, the Chirals column lists the number of chiral outliers, the number of chiral centers analysed, the number of these observed in the model and the number defined in the Chemical Component Dictionary. Similar counts are reported in the Torsion and Rings columns. '-' means no outliers of that kind were identified.

Mol	Type	Chain	Res	Link	Chirals	Torsions	Rings
3	GOL	A	302	-	-	0/4/4/4	-
3	GOL	A	303	-	-	4/4/4/4	-
2	CXS	A	301	-	-	6/8/16/16	0/1/1/1
3	GOL	A	305	-	-	2/4/4/4	-

All (2) bond length outliers are listed below:

Mol	Chain	Res	Type	Atoms	Z	Observed(Å)	Ideal(Å)
2	A	301	CXS	C1-S	-7.33	1.67	1.77
2	A	301	CXS	O1-S	6.49	1.63	1.45

All (8) bond angle outliers are listed below:

Mol	Chain	Res	Type	Atoms	Z	Observed(°)	Ideal(°)
2	A	301	CXS	C3-N-C4	6.02	125.78	114.18
2	A	301	CXS	O1-S-C1	4.20	113.07	106.73
2	A	301	CXS	O3-S-C1	4.03	113.89	106.00
2	A	301	CXS	O3-S-O1	-2.59	104.91	111.40
2	A	301	CXS	C7-C8-C9	-2.47	106.35	111.42
2	A	301	CXS	O2-S-C1	-2.32	103.23	106.73
2	A	301	CXS	C9-C4-C5	-2.27	106.88	110.80
2	A	301	CXS	O2-S-O1	-2.20	106.68	113.82

There are no chirality outliers.

All (12) torsion outliers are listed below:

Mol	Chain	Res	Type	Atoms
2	A	301	CXS	C5-C4-N-C3
3	A	303	GOL	C1-C2-C3-O3
3	A	305	GOL	O2-C2-C3-O3
2	A	301	CXS	C2-C1-S-O3
3	A	303	GOL	O1-C1-C2-C3
3	A	305	GOL	C1-C2-C3-O3
3	A	303	GOL	O2-C2-C3-O3
2	A	301	CXS	S-C1-C2-C3
2	A	301	CXS	C2-C1-S-O1
2	A	301	CXS	C2-C1-S-O2
2	A	301	CXS	C2-C3-N-C4
3	A	303	GOL	O1-C1-C2-O2

There are no ring outliers.

7 monomers are involved in 9 short contacts:

Mol	Chain	Res	Type	Clashes	Symm-Clashes
6	A	330	SCN	1	0
6	A	317	SCN	2	0
6	A	315	SCN	3	0
6	A	324	SCN	1	0
6	A	327	SCN	1	0
6	A	340	SCN	2	0
6	A	326	SCN	2	0

5.7 Other polymers [i](#)

There are no such residues in this entry.

5.8 Polymer linkage issues [i](#)

There are no chain breaks in this entry.

6 Fit of model and data ⓘ

6.1 Protein, DNA and RNA chains ⓘ

In the following table, the column labelled ‘#RSRZ > 2’ contains the number (and percentage) of RSRZ outliers, followed by percent RSRZ outliers for the chain as percentile scores relative to all X-ray entries and entries of similar resolution. The OWAB column contains the minimum, median, 95th percentile and maximum values of the occupancy-weighted average B-factor per residue. The column labelled ‘Q < 0.9’ lists the number of (and percentage) of residues with an average occupancy less than 0.9.

Mol	Chain	Analysed	<RSRZ>	#RSRZ>2	OWAB(Å ²)	Q<0.9
1	A	263/315 (83%)	1.06	44 (16%) 4 4	23, 35, 61, 76	0

All (44) RSRZ outliers are listed below:

Mol	Chain	Res	Type	RSRZ
1	A	231	VAL	5.8
1	A	100	LEU	5.5
1	A	109	ALA	5.1
1	A	227	THR	4.3
1	A	283	TRP	4.2
1	A	111	ILE	3.8
1	A	226	HIS	3.7
1	A	232	GLY	3.7
1	A	277	ASN	3.5
1	A	25	GLY	3.5
1	A	122	PHE	3.5
1	A	56	GLN	3.3
1	A	110	GLY	3.2
1	A	40	GLU	3.2
1	A	41	ALA	3.1
1	A	5	PRO	2.9
1	A	284	PHE	2.9
1	A	44	SER	2.9
1	A	112	MET	2.8
1	A	228	THR	2.7
1	A	16	TRP	2.7
1	A	192	TYR	2.7
1	A	37	TYR	2.6
1	A	251	PHE	2.6
1	A	265	PHE	2.6
1	A	49	ARG	2.6
1	A	276	ALA	2.5

Continued on next page...

Continued from previous page...

Mol	Chain	Res	Type	RSRZ
1	A	39	ASP	2.5
1	A	38	SER	2.5
1	A	271	ILE	2.4
1	A	198	SER	2.4
1	A	217	VAL	2.4
1	A	253	GLY	2.3
1	A	145	ARG	2.3
1	A	29	TRP	2.2
1	A	142	ASP	2.2
1	A	183	GLY	2.2
1	A	197	VAL	2.2
1	A	169	PRO	2.2
1	A	250	ALA	2.2
1	A	230	ASP	2.1
1	A	255	TRP	2.1
1	A	275	ILE	2.1
1	A	281	GLY	2.0

6.2 Non-standard residues in protein, DNA, RNA chains [i](#)

There are no non-standard protein/DNA/RNA residues in this entry.

6.3 Carbohydrates [i](#)

There are no oligosaccharides in this entry.

6.4 Ligands [i](#)

In the following table, the Atoms column lists the number of modelled atoms in the group and the number defined in the chemical component dictionary. The B-factors column lists the minimum, median, 95th percentile and maximum values of B factors of atoms in the group. The column labelled 'Q< 0.9' lists the number of atoms with occupancy less than 0.9.

Mol	Type	Chain	Res	Atoms	RSCC	RSR	B-factors(Å ²)	Q<0.9
6	SCN	A	342	3/3	0.70	0.19	77,77,83,98	0
6	SCN	A	338	3/3	0.72	0.13	63,63,71,75	0
4	SO4	A	304	5/5	0.72	0.15	80,82,88,89	0
6	SCN	A	343	3/3	0.72	0.15	68,68,77,80	0
6	SCN	A	330	3/3	0.75	0.17	77,77,84,86	0
6	SCN	A	322	3/3	0.76	0.19	86,86,89,92	0

Continued on next page...

Continued from previous page...

Mol	Type	Chain	Res	Atoms	RSCC	RSR	B-factors(\AA^2)	Q<0.9
6	SCN	A	309	3/3	0.76	0.17	80,80,84,95	0
6	SCN	A	337	3/3	0.76	0.20	72,72,73,77	0
6	SCN	A	344	3/3	0.78	0.20	89,89,95,98	0
6	SCN	A	341	3/3	0.79	0.14	83,83,97,103	0
6	SCN	A	308	3/3	0.80	0.14	55,55,62,63	0
6	SCN	A	328	3/3	0.80	0.15	86,86,98,107	0
3	GOL	A	303	6/6	0.80	0.16	63,65,67,71	0
6	SCN	A	326	3/3	0.81	0.14	62,62,62,79	0
6	SCN	A	335	3/3	0.81	0.14	85,85,87,88	0
6	SCN	A	317	3/3	0.82	0.17	52,52,57,70	0
6	SCN	A	325	3/3	0.82	0.13	64,64,72,82	0
6	SCN	A	333	3/3	0.84	0.14	74,74,80,89	0
6	SCN	A	336	3/3	0.84	0.15	88,88,95,95	0
6	SCN	A	310	3/3	0.85	0.13	58,58,65,65	0
6	SCN	A	327	3/3	0.87	0.11	78,78,78,85	0
6	SCN	A	319	3/3	0.88	0.10	73,73,76,77	0
6	SCN	A	315	3/3	0.89	0.15	75,75,83,85	0
6	SCN	A	340	3/3	0.89	0.10	68,68,75,79	0
6	SCN	A	332	3/3	0.89	0.14	65,65,65,72	0
6	SCN	A	331	3/3	0.90	0.15	67,67,71,73	0
6	SCN	A	312	3/3	0.90	0.11	51,51,54,65	0
3	GOL	A	302	6/6	0.90	0.13	67,72,73,76	0
6	SCN	A	324	3/3	0.91	0.12	65,65,67,81	0
6	SCN	A	321	3/3	0.91	0.13	48,48,56,66	0
5	PT	A	320	1/1	0.91	0.09	55,55,55,55	1
3	GOL	A	305	6/6	0.92	0.17	67,73,80,87	0
6	SCN	A	314	3/3	0.93	0.11	48,48,56,65	0
2	CXS	A	301	14/14	0.93	0.12	38,48,65,68	0
6	SCN	A	318	3/3	0.94	0.14	71,71,75,76	0
6	SCN	A	316	3/3	0.94	0.09	59,59,65,69	0
6	SCN	A	307	3/3	0.95	0.10	47,47,61,61	0
5	PT	A	313	1/1	0.96	0.08	57,57,57,57	0
5	PT	A	339	1/1	0.96	0.06	113,113,113,113	0
6	SCN	A	311	3/3	0.96	0.10	55,55,67,68	0
5	PT	A	334	1/1	0.97	0.10	105,105,105,105	0
5	PT	A	329	1/1	0.97	0.11	96,96,96,96	0
5	PT	A	323	1/1	0.98	0.06	88,88,88,88	0
5	PT	A	306	1/1	0.98	0.04	56,56,56,56	0

6.5 Other polymers ⓘ

There are no such residues in this entry.