



Full wwPDB X-ray Structure Validation Report ⓘ

Mar 9, 2026 – 07:01 AM UTC

PDB ID : 5DTW / pdb_00005dtw
Title : Crystal structure of M. tuberculosis EchA6 bound to C20-CoA
Authors : Cox, J.A.G.; Besra, G.S.; Futterer, K.
Deposited on : 2015-09-18
Resolution : 2.44 Å(reported)

This is a Full wwPDB X-ray Structure Validation Report for a publicly released PDB entry.

We welcome your comments at validation@mail.wwpdb.org

A user guide is available at

<https://www.wwpdb.org/validation/2017/XrayValidationReportHelp>

with specific help available everywhere you see the ⓘ symbol.

The types of validation reports are described at

<http://www.wwpdb.org/validation/2017/FAQs#types>.

The following versions of software and data (see [references ⓘ](#)) were used in the production of this report:

MolProbity : 4-5-2 with Phenix2.0
Mogul : 2022.3.0, CSD as543be (2022)
Xtriage (Phenix) : 2.0
EDS : 3.0
Buster-report : wwPDB partial adaption of 1.1.7 (2018)
Percentile statistics : 20250101.v01 (using entries in the PDB archive January 1st 2025)
CCP4 : 9.0.010 (Gargrove)
Density-Fitness : 1.0.12
Ideal geometry (proteins) : Engh & Huber (2001)
Ideal geometry (DNA, RNA) : Parkinson et al. (1996)
Validation Pipeline (wwPDB-VP) : 2.49

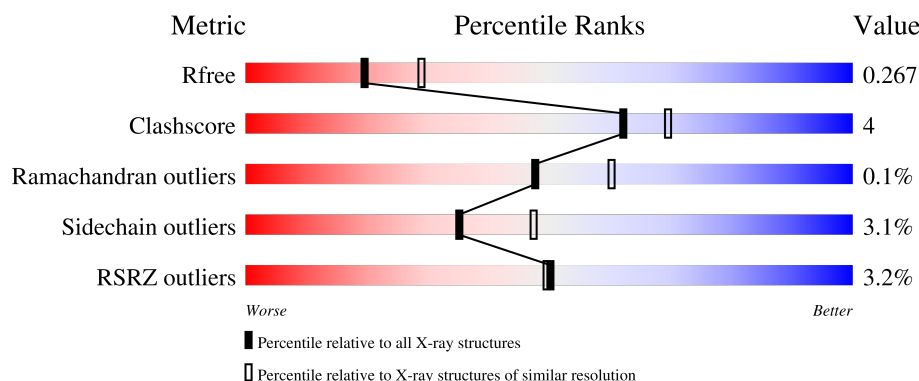
1 Overall quality at a glance

The following experimental techniques were used to determine the structure:

X-RAY DIFFRACTION

The reported resolution of this entry is 2.44 Å.

Percentile scores (ranging between 0-100) for global validation metrics of the entry are shown in the following graphic. The table shows the number of entries on which the scores are based.



Metric	Whole archive (#Entries)	Similar resolution (#Entries, resolution range(Å))
R_{free}	180053	2340 (2.46-2.42)
Clashscore	190562	2400 (2.46-2.42)
Ramachandran outliers	187476	2379 (2.46-2.42)
Sidechain outliers	187428	2379 (2.46-2.42)
RSRZ outliers	180081	2340 (2.46-2.42)

The table below summarises the geometric issues observed across the polymeric chains and their fit to the electron density. The red, orange, yellow and green segments of the lower bar indicate the fraction of residues that contain outliers for ≥ 3 , 2, 1 and 0 types of geometric quality criteria respectively. A grey segment represents the fraction of residues that are not modelled. The numeric value for each fraction is indicated below the corresponding segment, with a dot representing fractions $\leq 5\%$. The upper red bar (where present) indicates the fraction of residues that have poor fit to the electron density. The numeric value is given above the bar.

Mol	Chain	Length	Quality of chain
1	A	263	<div> <div>2%</div> <div> <div></div> <div>82%</div> <div>10%</div> <div>7%</div> </div> </div>
1	B	263	<div> <div>2%</div> <div> <div></div> <div>80%</div> <div>11%</div> <div>9%</div> </div> </div>
1	C	263	<div> <div>4%</div> <div> <div></div> <div>81%</div> <div>10%</div> <div>6%</div> </div> </div>
1	D	263	<div> <div>2%</div> <div> <div></div> <div>83%</div> <div>10%</div> <div>7%</div> </div> </div>
1	E	263	<div> <div>5%</div> <div> <div></div> <div>81%</div> <div>10%</div> <div>9%</div> </div> </div>

Continued on next page...

Continued from previous page...

Mol	Chain	Length	Quality of chain
1	F	263	<div><div></div><div>3%</div><div>82%</div><div>10%</div><div>7%</div></div>

2 Entry composition

There are 3 unique types of molecules in this entry. The entry contains 11051 atoms, of which 0 are hydrogens and 0 are deuteriums.

In the tables below, the ZeroOcc column contains the number of atoms modelled with zero occupancy, the AltConf column contains the number of residues with at least one atom in alternate conformation and the Trace column contains the number of residues modelled with at most 2 atoms.

- Molecule 1 is a protein called enoyl-CoA hydratase echA6.

Mol	Chain	Residues	Atoms					ZeroOcc	AltConf	Trace
1	A	244	Total	C	N	O	S	0	0	0
			1810	1135	330	336	9			
1	B	240	Total	C	N	O	S	0	0	0
			1790	1123	325	333	9			
1	C	246	Total	C	N	O	S	0	0	0
			1797	1126	328	335	8			
1	D	244	Total	C	N	O	S	0	0	0
			1814	1138	328	339	9			
1	E	239	Total	C	N	O	S	0	0	0
			1780	1118	324	329	9			
1	F	244	Total	C	N	O	S	0	0	0
			1801	1129	326	337	9			

There are 120 discrepancies between the modelled and reference sequences:

Chain	Residue	Modelled	Actual	Comment	Reference
A	-19	MET	-	initiating methionine	UNP P9WNP1
A	-18	GLY	-	expression tag	UNP P9WNP1
A	-17	SER	-	expression tag	UNP P9WNP1
A	-16	SER	-	expression tag	UNP P9WNP1
A	-15	HIS	-	expression tag	UNP P9WNP1
A	-14	HIS	-	expression tag	UNP P9WNP1
A	-13	HIS	-	expression tag	UNP P9WNP1
A	-12	HIS	-	expression tag	UNP P9WNP1
A	-11	HIS	-	expression tag	UNP P9WNP1
A	-10	HIS	-	expression tag	UNP P9WNP1
A	-9	SER	-	expression tag	UNP P9WNP1
A	-8	SER	-	expression tag	UNP P9WNP1
A	-7	GLY	-	expression tag	UNP P9WNP1
A	-6	LEU	-	expression tag	UNP P9WNP1
A	-5	VAL	-	expression tag	UNP P9WNP1
A	-4	PRO	-	expression tag	UNP P9WNP1
A	-3	ARG	-	expression tag	UNP P9WNP1

Continued on next page...

Continued from previous page...

Chain	Residue	Modelled	Actual	Comment	Reference
A	-2	GLY	-	expression tag	UNP P9WNP1
A	-1	SER	-	expression tag	UNP P9WNP1
A	0	HIS	-	expression tag	UNP P9WNP1
B	-19	MET	-	initiating methionine	UNP P9WNP1
B	-18	GLY	-	expression tag	UNP P9WNP1
B	-17	SER	-	expression tag	UNP P9WNP1
B	-16	SER	-	expression tag	UNP P9WNP1
B	-15	HIS	-	expression tag	UNP P9WNP1
B	-14	HIS	-	expression tag	UNP P9WNP1
B	-13	HIS	-	expression tag	UNP P9WNP1
B	-12	HIS	-	expression tag	UNP P9WNP1
B	-11	HIS	-	expression tag	UNP P9WNP1
B	-10	HIS	-	expression tag	UNP P9WNP1
B	-9	SER	-	expression tag	UNP P9WNP1
B	-8	SER	-	expression tag	UNP P9WNP1
B	-7	GLY	-	expression tag	UNP P9WNP1
B	-6	LEU	-	expression tag	UNP P9WNP1
B	-5	VAL	-	expression tag	UNP P9WNP1
B	-4	PRO	-	expression tag	UNP P9WNP1
B	-3	ARG	-	expression tag	UNP P9WNP1
B	-2	GLY	-	expression tag	UNP P9WNP1
B	-1	SER	-	expression tag	UNP P9WNP1
B	0	HIS	-	expression tag	UNP P9WNP1
C	-19	MET	-	initiating methionine	UNP P9WNP1
C	-18	GLY	-	expression tag	UNP P9WNP1
C	-17	SER	-	expression tag	UNP P9WNP1
C	-16	SER	-	expression tag	UNP P9WNP1
C	-15	HIS	-	expression tag	UNP P9WNP1
C	-14	HIS	-	expression tag	UNP P9WNP1
C	-13	HIS	-	expression tag	UNP P9WNP1
C	-12	HIS	-	expression tag	UNP P9WNP1
C	-11	HIS	-	expression tag	UNP P9WNP1
C	-10	HIS	-	expression tag	UNP P9WNP1
C	-9	SER	-	expression tag	UNP P9WNP1
C	-8	SER	-	expression tag	UNP P9WNP1
C	-7	GLY	-	expression tag	UNP P9WNP1
C	-6	LEU	-	expression tag	UNP P9WNP1
C	-5	VAL	-	expression tag	UNP P9WNP1
C	-4	PRO	-	expression tag	UNP P9WNP1
C	-3	ARG	-	expression tag	UNP P9WNP1
C	-2	GLY	-	expression tag	UNP P9WNP1
C	-1	SER	-	expression tag	UNP P9WNP1

Continued on next page...

Continued from previous page...

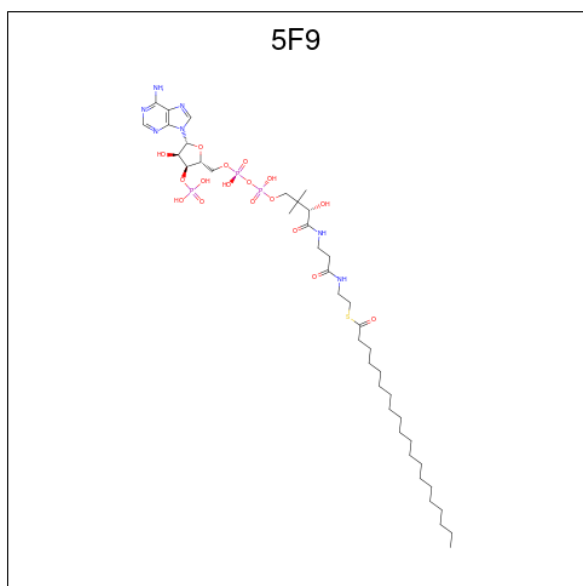
Chain	Residue	Modelled	Actual	Comment	Reference
C	0	HIS	-	expression tag	UNP P9WNP1
D	-19	MET	-	initiating methionine	UNP P9WNP1
D	-18	GLY	-	expression tag	UNP P9WNP1
D	-17	SER	-	expression tag	UNP P9WNP1
D	-16	SER	-	expression tag	UNP P9WNP1
D	-15	HIS	-	expression tag	UNP P9WNP1
D	-14	HIS	-	expression tag	UNP P9WNP1
D	-13	HIS	-	expression tag	UNP P9WNP1
D	-12	HIS	-	expression tag	UNP P9WNP1
D	-11	HIS	-	expression tag	UNP P9WNP1
D	-10	HIS	-	expression tag	UNP P9WNP1
D	-9	SER	-	expression tag	UNP P9WNP1
D	-8	SER	-	expression tag	UNP P9WNP1
D	-7	GLY	-	expression tag	UNP P9WNP1
D	-6	LEU	-	expression tag	UNP P9WNP1
D	-5	VAL	-	expression tag	UNP P9WNP1
D	-4	PRO	-	expression tag	UNP P9WNP1
D	-3	ARG	-	expression tag	UNP P9WNP1
D	-2	GLY	-	expression tag	UNP P9WNP1
D	-1	SER	-	expression tag	UNP P9WNP1
D	0	HIS	-	expression tag	UNP P9WNP1
E	-19	MET	-	initiating methionine	UNP P9WNP1
E	-18	GLY	-	expression tag	UNP P9WNP1
E	-17	SER	-	expression tag	UNP P9WNP1
E	-16	SER	-	expression tag	UNP P9WNP1
E	-15	HIS	-	expression tag	UNP P9WNP1
E	-14	HIS	-	expression tag	UNP P9WNP1
E	-13	HIS	-	expression tag	UNP P9WNP1
E	-12	HIS	-	expression tag	UNP P9WNP1
E	-11	HIS	-	expression tag	UNP P9WNP1
E	-10	HIS	-	expression tag	UNP P9WNP1
E	-9	SER	-	expression tag	UNP P9WNP1
E	-8	SER	-	expression tag	UNP P9WNP1
E	-7	GLY	-	expression tag	UNP P9WNP1
E	-6	LEU	-	expression tag	UNP P9WNP1
E	-5	VAL	-	expression tag	UNP P9WNP1
E	-4	PRO	-	expression tag	UNP P9WNP1
E	-3	ARG	-	expression tag	UNP P9WNP1
E	-2	GLY	-	expression tag	UNP P9WNP1
E	-1	SER	-	expression tag	UNP P9WNP1
E	0	HIS	-	expression tag	UNP P9WNP1
F	-19	MET	-	initiating methionine	UNP P9WNP1

Continued on next page...

Continued from previous page...

Chain	Residue	Modelled	Actual	Comment	Reference
F	-18	GLY	-	expression tag	UNP P9WNP1
F	-17	SER	-	expression tag	UNP P9WNP1
F	-16	SER	-	expression tag	UNP P9WNP1
F	-15	HIS	-	expression tag	UNP P9WNP1
F	-14	HIS	-	expression tag	UNP P9WNP1
F	-13	HIS	-	expression tag	UNP P9WNP1
F	-12	HIS	-	expression tag	UNP P9WNP1
F	-11	HIS	-	expression tag	UNP P9WNP1
F	-10	HIS	-	expression tag	UNP P9WNP1
F	-9	SER	-	expression tag	UNP P9WNP1
F	-8	SER	-	expression tag	UNP P9WNP1
F	-7	GLY	-	expression tag	UNP P9WNP1
F	-6	LEU	-	expression tag	UNP P9WNP1
F	-5	VAL	-	expression tag	UNP P9WNP1
F	-4	PRO	-	expression tag	UNP P9WNP1
F	-3	ARG	-	expression tag	UNP P9WNP1
F	-2	GLY	-	expression tag	UNP P9WNP1
F	-1	SER	-	expression tag	UNP P9WNP1
F	0	HIS	-	expression tag	UNP P9WNP1

- Molecule 2 is Arachinoyl-CoA (CCD ID: 5F9) (formula: $C_{41}H_{74}N_7O_{17}P_3S$).



Mol	Chain	Residues	Atoms						ZeroOcc	AltConf
2	A	1	Total	C	N	O	P	S	0	0
			69	41	7	17	3	1		
2	D	1	Total	C	N	O	P	S	0	0
			69	41	7	17	3	1		

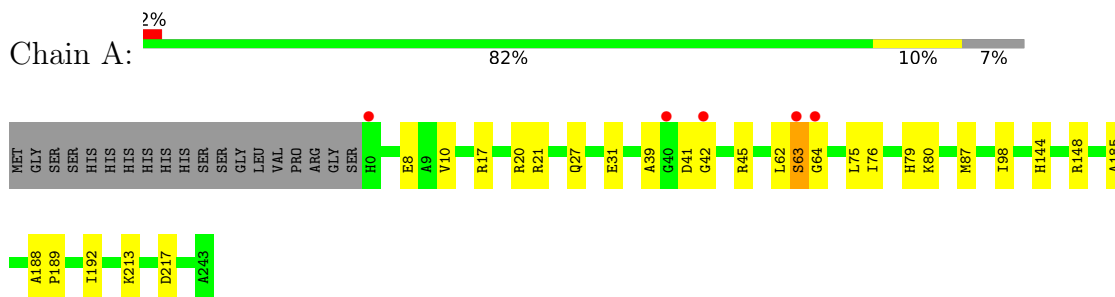
- Molecule 3 is water.

Mol	Chain	Residues	Atoms		ZeroOcc	AltConf
3	A	26	Total 26	O 26	0	0
3	B	19	Total 19	O 19	0	0
3	C	23	Total 23	O 23	0	0
3	D	26	Total 26	O 26	0	0
3	E	13	Total 13	O 13	0	0
3	F	14	Total 14	O 14	0	0

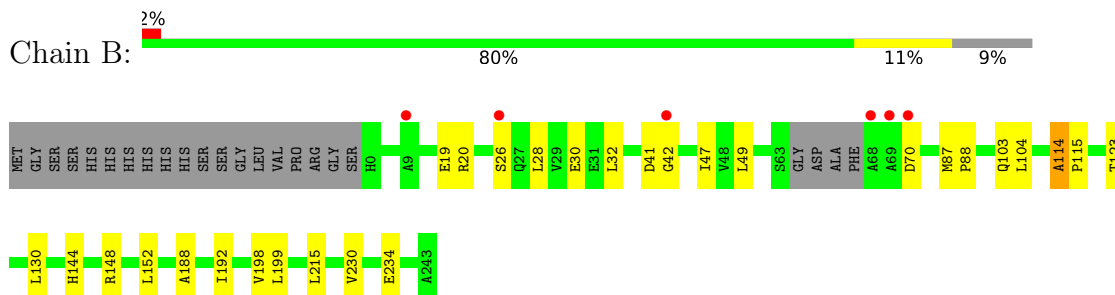
3 Residue-property plots [i](#)

These plots are drawn for all protein, RNA, DNA and oligosaccharide chains in the entry. The first graphic for a chain summarises the proportions of the various outlier classes displayed in the second graphic. The second graphic shows the sequence view annotated by issues in geometry and electron density. Residues are color-coded according to the number of geometric quality criteria for which they contain at least one outlier: green = 0, yellow = 1, orange = 2 and red = 3 or more. A red dot above a residue indicates a poor fit to the electron density ($RSRZ > 2$). Stretches of 2 or more consecutive residues without any outlier are shown as a green connector. Residues present in the sample, but not in the model, are shown in grey.

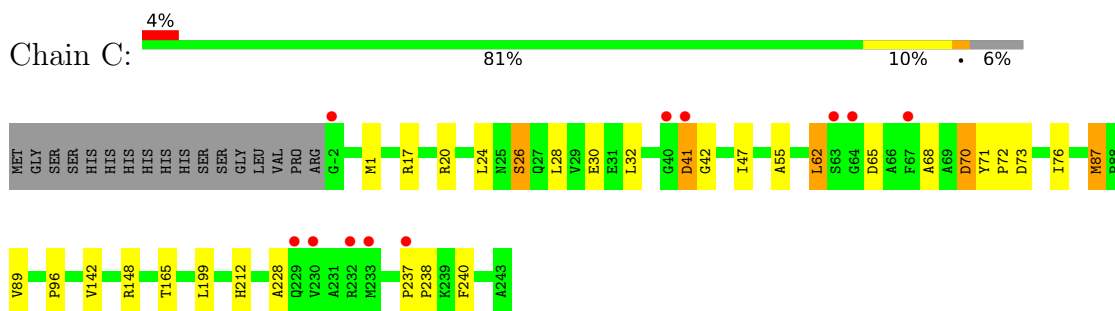
- Molecule 1: enoyl-CoA hydratase echA6



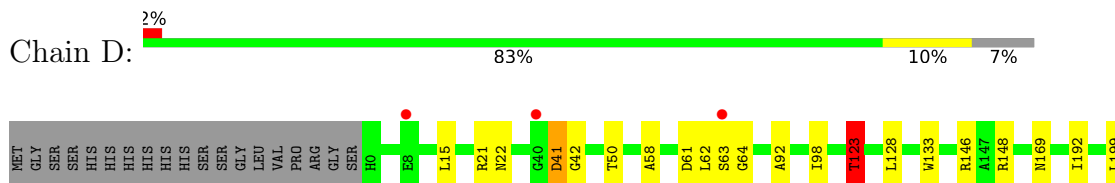
- Molecule 1: enoyl-CoA hydratase echA6



- Molecule 1: enoyl-CoA hydratase echA6

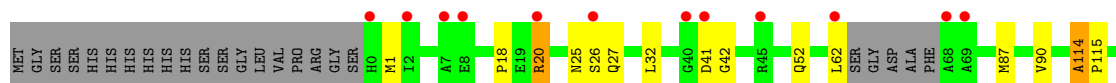
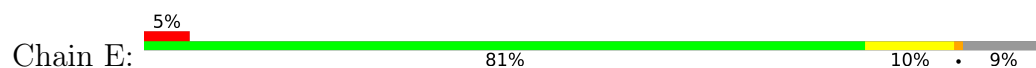


- Molecule 1: enoyl-CoA hydratase echA6

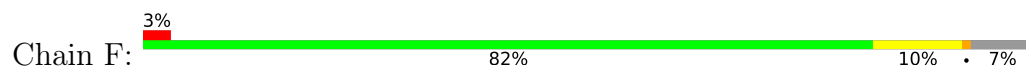




- Molecule 1: enoyl-CoA hydratase echA6



- Molecule 1: enoyl-CoA hydratase echA6



4 Data and refinement statistics

Property	Value	Source
Space group	P 1 21 1	Depositor
Cell constants a, b, c, α , β , γ	113.60Å 51.27Å 156.82Å 90.00° 106.80° 90.00°	Depositor
Resolution (Å)	42.85 – 2.44 42.85 – 2.44	Depositor EDS
% Data completeness (in resolution range)	98.4 (42.85-2.44) 98.4 (42.85-2.44)	Depositor EDS
R_{merge}	0.08	Depositor
R_{sym}	0.08	Depositor
$\langle I/\sigma(I) \rangle$ ¹	2.39 (at 2.45Å)	Xtriage
Refinement program	PHENIX 1.7.3 _928	Depositor
R, R_{free}	0.222 , 0.275 0.215 , 0.267	Depositor DCC
R_{free} test set	3257 reflections (5.06%)	wwPDB-VP
Wilson B-factor (Å ²)	24.2	Xtriage
Anisotropy	0.530	Xtriage
Bulk solvent k_{sol} (e/Å ³), B_{sol} (Å ²)	0.32 , 27.7	EDS
L-test for twinning ²	$\langle L \rangle = 0.46$, $\langle L^2 \rangle = 0.29$	Xtriage
Estimated twinning fraction	No twinning to report.	Xtriage
F_o, F_c correlation	0.91	EDS
Total number of atoms	11051	wwPDB-VP
Average B, all atoms (Å ²)	30.0	wwPDB-VP

Xtriage's analysis on translational NCS is as follows: *The largest off-origin peak in the Patterson function is 6.61% of the height of the origin peak. No significant pseudotranslation is detected.*

¹Intensities estimated from amplitudes.

²Theoretical values of $\langle |L| \rangle$, $\langle L^2 \rangle$ for acentric reflections are 0.5, 0.333 respectively for untwinned datasets, and 0.375, 0.2 for perfectly twinned datasets.

5 Model quality

5.1 Standard geometry

Bond lengths and bond angles in the following residue types are not validated in this section: 5F9

The Z score for a bond length (or angle) is the number of standard deviations the observed value is removed from the expected value. A bond length (or angle) with $|Z| > 5$ is considered an outlier worth inspection. RMSZ is the root-mean-square of all Z scores of the bond lengths (or angles).

Mol	Chain	Bond lengths		Bond angles	
		RMSZ	$\# Z > 5$	RMSZ	$\# Z > 5$
1	A	0.60	0/1842	0.93	3/2500 (0.1%)
1	B	0.52	0/1820	0.87	4/2467 (0.2%)
1	C	0.51	0/1829	0.86	1/2487 (0.0%)
1	D	0.57	0/1846	0.90	3/2505 (0.1%)
1	E	0.53	0/1810	0.91	5/2454 (0.2%)
1	F	0.53	0/1833	0.87	1/2491 (0.0%)
All	All	0.54	0/10980	0.89	17/14904 (0.1%)

There are no bond length outliers.

All (17) bond angle outliers are listed below:

Mol	Chain	Res	Type	Atoms	Z	Observed(°)	Ideal(°)
1	A	63	SER	N-CA-C	7.84	120.91	111.82
1	D	63	SER	N-CA-C	6.86	118.76	111.28
1	B	188	ALA	CA-C-N	6.59	126.09	119.24
1	B	188	ALA	C-N-CA	6.59	126.09	119.24
1	D	41	ASP	N-CA-C	6.12	121.32	113.18
1	E	114	ALA	CA-C-N	5.63	126.00	119.47
1	E	114	ALA	C-N-CA	5.63	126.00	119.47
1	F	41	ASP	N-CA-C	5.61	120.23	113.17
1	D	123	THR	N-CA-C	5.59	118.10	111.33
1	E	90	VAL	CB-CA-C	-5.47	105.38	111.35
1	A	10	VAL	N-CA-C	5.27	114.33	106.85
1	B	114	ALA	CA-C-N	5.23	125.53	119.47
1	B	114	ALA	C-N-CA	5.23	125.53	119.47
1	A	8	GLU	CB-CA-C	-5.17	110.59	116.54
1	C	41	ASP	N-CA-C	5.17	119.86	113.50
1	E	188	ALA	CA-C-N	5.16	124.95	119.28
1	E	188	ALA	C-N-CA	5.16	124.95	119.28

There are no chirality outliers.

There are no planarity outliers.

5.2 Too-close contacts

In the following table, the Non-H and H(model) columns list the number of non-hydrogen atoms and hydrogen atoms in the chain respectively. The H(added) column lists the number of hydrogen atoms added and optimized by MolProbity. The Clashes column lists the number of clashes within the asymmetric unit, whereas Symm-Clashes lists symmetry-related clashes.

Mol	Chain	Non-H	H(model)	H(added)	Clashes	Symm-Clashes
1	A	1810	0	1797	15	0
1	B	1790	0	1789	13	0
1	C	1797	0	1762	20	0
1	D	1814	0	1800	16	0
1	E	1780	0	1780	16	0
1	F	1801	0	1772	18	0
2	A	69	0	72	2	0
2	D	69	0	72	4	0
3	A	26	0	0	1	0
3	B	19	0	0	0	0
3	C	23	0	0	0	0
3	D	26	0	0	2	0
3	E	13	0	0	0	0
3	F	14	0	0	0	0
All	All	11051	0	10844	89	0

The all-atom clashscore is defined as the number of clashes found per 1000 atoms (including hydrogen atoms). The all-atom clashscore for this structure is 4.

All (89) close contacts within the same asymmetric unit are listed below, sorted by their clash magnitude.

Atom-1	Atom-2	Interatomic distance (Å)	Clash overlap (Å)
1:F:41:ASP:N	1:F:42:GLY:HA3	1.95	0.82
1:D:123:THR:HG22	1:D:128:LEU:HB2	1.63	0.78
1:F:88:PRO:HG3	1:F:192:ILE:HG21	1.66	0.77
1:C:65:ASP:HB3	1:C:68:ALA:HB2	1.68	0.75
1:D:41:ASP:H	1:D:42:GLY:HA3	1.55	0.71
1:B:199:LEU:HD13	1:C:148:ARG:HG2	1.73	0.69
1:C:24:LEU:HA	1:C:28:LEU:HD23	1.74	0.69
1:F:51:GLY:O	1:F:94:ASN:ND2	2.29	0.65
1:F:1:MET:HE2	1:F:28:LEU:HB2	1.79	0.63

Continued on next page...

Continued from previous page...

Atom-1	Atom-2	Interatomic distance (Å)	Clash overlap (Å)
1:D:148:ARG:HG2	1:F:199:LEU:HD13	1.81	0.62
1:E:41:ASP:N	1:E:42:GLY:HA3	2.14	0.61
1:A:21:ARG:HG3	2:A:301:5F9:H17	1.81	0.61
1:A:148:ARG:HG2	1:C:199:LEU:HD13	1.83	0.60
1:B:41:ASP:N	1:B:42:GLY:HA3	2.16	0.59
1:C:41:ASP:N	1:C:42:GLY:HA3	2.16	0.59
1:A:41:ASP:N	1:A:42:GLY:HA3	2.17	0.59
1:F:47:ILE:HG13	1:F:87:MET:HE2	1.86	0.58
1:D:15:LEU:HD23	1:D:22:ASN:HB3	1.88	0.55
1:B:19:GLU:HG2	1:B:20:ARG:HG2	1.87	0.55
1:A:39:ALA:HB1	1:A:87:MET:HE2	1.89	0.54
1:D:21:ARG:HG3	2:D:301:5F9:H17	1.90	0.54
1:B:88:PRO:HD3	1:B:192:ILE:HG21	1.90	0.53
1:D:133:TRP:CG	2:D:301:5F9:H66	2.45	0.52
1:D:192:ILE:HG23	1:E:152:LEU:HD22	1.93	0.51
1:C:71:TYR:H	1:C:72:PRO:HD2	1.76	0.50
1:A:79:HIS:HB2	2:A:301:5F9:H62	1.93	0.50
1:D:146:ARG:NH1	3:D:404:HOH:O	2.44	0.50
1:A:144:HIS:O	1:A:148:ARG:HG3	2.12	0.49
1:D:58:ALA:HB1	2:D:301:5F9:O44	2.12	0.49
1:C:228:ALA:HB2	1:C:240:PHE:HE2	1.78	0.49
1:C:73:ASP:HA	1:C:76:ILE:HD12	1.95	0.49
1:A:27:GLN:NE2	1:A:31:GLU:OE2	2.43	0.48
1:A:63:SER:N	1:A:64:GLY:HA2	2.28	0.48
1:B:47:ILE:HG13	1:B:87:MET:HE2	1.94	0.48
1:C:62:LEU:HG	1:C:68:ALA:HB1	1.94	0.48
1:C:87:MET:HE3	1:C:87:MET:HB2	1.64	0.48
1:D:50:THR:HB	1:D:92:ALA:HB3	1.96	0.48
1:C:71:TYR:N	1:C:72:PRO:HD2	2.28	0.47
1:E:20:ARG:HA	1:E:20:ARG:HD2	1.57	0.47
1:C:47:ILE:HB	1:C:89:VAL:HG22	1.97	0.47
1:F:55:ALA:HA	1:F:96:PRO:HD2	1.96	0.47
1:A:192:ILE:HG23	1:B:152:LEU:HD22	1.96	0.47
1:D:41:ASP:N	1:D:42:GLY:HA3	2.21	0.47
1:C:55:ALA:HA	1:C:96:PRO:HD2	1.98	0.46
1:E:41:ASP:N	1:E:42:GLY:CA	2.78	0.46
1:A:76:ILE:HG22	1:A:80:LYS:HD2	1.97	0.46
1:A:45:ARG:HB2	1:A:185:ALA:HB1	1.98	0.46
1:E:41:ASP:H	1:E:42:GLY:HA3	1.79	0.46
1:D:61:ASP:O	1:D:64:GLY:HA3	2.16	0.45
1:C:142:VAL:HA	1:C:165:THR:HB	1.99	0.45

Continued on next page...

Continued from previous page...

Atom-1	Atom-2	Interatomic distance (Å)	Clash overlap (Å)
1:E:1:MET:HE2	1:E:27:GLN:HB3	1.98	0.45
1:C:228:ALA:HB2	1:C:240:PHE:CE2	2.51	0.45
1:C:17:ARG:NH2	1:C:20:ARG:HH11	2.15	0.45
1:E:1:MET:HE1	1:E:25:ASN:OD1	2.17	0.44
1:E:138:LEU:O	1:E:142:VAL:HG22	2.17	0.44
1:B:114:ALA:HA	1:B:115:PRO:HD3	1.89	0.44
1:A:213:LYS:NZ	1:A:217:ASP:OD2	2.51	0.44
1:E:32:LEU:HD23	1:E:32:LEU:HA	1.87	0.44
1:F:1:MET:HE3	1:F:1:MET:HB3	1.93	0.43
1:B:198:VAL:HG22	1:C:212:HIS:CG	2.53	0.43
1:D:237:PRO:HA	1:D:238:PRO:HD2	1.84	0.43
1:E:198:VAL:HG11	1:F:135:ILE:HD12	2.00	0.43
2:D:301:5F9:H51	2:D:301:5F9:H45	1.83	0.43
1:F:133:TRP:HA	1:F:204:ALA:O	2.18	0.43
1:C:237:PRO:HA	1:C:238:PRO:HD3	1.85	0.43
1:F:188:ALA:HA	1:F:189:PRO:HD3	1.86	0.43
1:B:49:LEU:HD21	1:B:104:LEU:HD11	2.01	0.42
1:B:144:HIS:O	1:B:148:ARG:HG3	2.19	0.42
1:C:26:SER:HB2	1:C:65:ASP:OD2	2.18	0.42
1:D:199:LEU:HD13	1:E:148:ARG:HG2	2.01	0.42
1:F:41:ASP:H	1:F:42:GLY:HA3	1.80	0.42
1:D:235:LYS:HA	3:D:424:HOH:O	2.19	0.42
1:E:166:GLY:O	1:F:145:GLY:HA3	2.18	0.42
1:E:87:MET:HB3	1:E:87:MET:HE2	1.55	0.42
1:F:123:THR:HG21	1:F:130:LEU:HD21	2.00	0.42
1:F:163:LEU:HD22	1:F:171:ILE:HG13	2.01	0.42
1:A:188:ALA:HA	1:A:189:PRO:HD3	1.91	0.42
1:A:188:ALA:HB1	3:A:425:HOH:O	2.19	0.42
1:D:169:ASN:ND2	1:E:149:ALA:HB2	2.35	0.41
1:F:45:ARG:C	1:F:87:MET:HE3	2.45	0.41
1:C:70:ASP:OD1	1:C:70:ASP:N	2.53	0.41
1:F:20:ARG:HA	1:F:20:ARG:HD2	1.77	0.41
1:B:123:THR:HG21	1:B:130:LEU:HG	2.03	0.40
1:A:17:ARG:NH2	1:A:20:ARG:HG3	2.35	0.40
1:E:18:PRO:HB3	1:E:52:GLN:O	2.20	0.40
1:B:215:LEU:HD23	1:B:215:LEU:HA	1.85	0.40
1:B:230:VAL:O	1:B:234:GLU:HG3	2.21	0.40
1:E:114:ALA:HA	1:E:115:PRO:HD3	1.93	0.40
1:F:218:LYS:O	1:F:222:SER:HB3	2.21	0.40

There are no symmetry-related clashes.

5.3 Torsion angles

5.3.1 Protein backbone

In the following table, the Percentiles column shows the percent Ramachandran outliers of the chain as a percentile score with respect to all X-ray entries followed by that with respect to entries of similar resolution.

The Analysed column shows the number of residues for which the backbone conformation was analysed, and the total number of residues.

Mol	Chain	Analysed	Favoured	Allowed	Outliers	Percentiles	
1	A	242/263 (92%)	230 (95%)	12 (5%)	0	100	100
1	B	236/263 (90%)	227 (96%)	9 (4%)	0	100	100
1	C	244/263 (93%)	232 (95%)	12 (5%)	0	100	100
1	D	242/263 (92%)	233 (96%)	8 (3%)	1 (0%)	30	36
1	E	235/263 (89%)	229 (97%)	6 (3%)	0	100	100
1	F	242/263 (92%)	230 (95%)	12 (5%)	0	100	100
All	All	1441/1578 (91%)	1381 (96%)	59 (4%)	1 (0%)	48	60

All (1) Ramachandran outliers are listed below:

Mol	Chain	Res	Type
1	D	205	ILE

5.3.2 Protein sidechains

In the following table, the Percentiles column shows the percent sidechain outliers of the chain as a percentile score with respect to all X-ray entries followed by that with respect to entries of similar resolution.

The Analysed column shows the number of residues for which the sidechain conformation was analysed, and the total number of residues.

Mol	Chain	Analysed	Rotameric	Outliers	Percentiles	
1	A	174/197 (88%)	171 (98%)	3 (2%)	53	66
1	B	174/197 (88%)	168 (97%)	6 (3%)	32	45
1	C	169/197 (86%)	162 (96%)	7 (4%)	27	38
1	D	175/197 (89%)	170 (97%)	5 (3%)	37	49
1	E	172/197 (87%)	165 (96%)	7 (4%)	27	38
1	F	172/197 (87%)	168 (98%)	4 (2%)	44	57

Continued on next page...

Continued from previous page...

Mol	Chain	Analysed	Rotameric	Outliers	Percentiles
All	All	1036/1182 (88%)	1004 (97%)	32 (3%)	35 47

All (32) residues with a non-rotameric sidechain are listed below:

Mol	Chain	Res	Type
1	A	62	LEU
1	A	75	LEU
1	A	98	ILE
1	B	26	SER
1	B	28	LEU
1	B	30	GLU
1	B	32	LEU
1	B	70	ASP
1	B	103	GLN
1	C	1	MET
1	C	26	SER
1	C	30	GLU
1	C	32	LEU
1	C	62	LEU
1	C	70	ASP
1	C	87	MET
1	D	62	LEU
1	D	98	ILE
1	D	123	THR
1	D	207	GLU
1	D	214	GLU
1	E	20	ARG
1	E	26	SER
1	E	62	LEU
1	E	171	ILE
1	E	178	GLN
1	E	197	ARG
1	E	214	GLU
1	F	1	MET
1	F	25	ASN
1	F	28	LEU
1	F	214	GLU

Sometimes sidechains can be flipped to improve hydrogen bonding and reduce clashes. All (13) such sidechains are listed below:

Mol	Chain	Res	Type
1	A	193	GLN
1	A	223	GLN
1	C	6	GLN
1	C	34	GLN
1	C	164	HIS
1	D	6	GLN
1	D	16	GLN
1	D	193	GLN
1	E	16	GLN
1	E	52	GLN
1	F	25	ASN
1	F	52	GLN
1	F	241	GLN

5.3.3 RNA [i](#)

There are no RNA molecules in this entry.

5.4 Non-standard residues in protein, DNA, RNA chains [i](#)

There are no non-standard protein/DNA/RNA residues in this entry.

5.5 Carbohydrates [i](#)

There are no oligosaccharides in this entry.

5.6 Ligand geometry [i](#)

2 ligands are modelled in this entry.

In the following table, the Counts columns list the number of bonds (or angles) for which Mogul statistics could be retrieved, the number of bonds (or angles) that are observed in the model and the number of bonds (or angles) that are defined in the Chemical Component Dictionary. The Link column lists molecule types, if any, to which the group is linked. The Z score for a bond length (or angle) is the number of standard deviations the observed value is removed from the expected value. A bond length (or angle) with $|Z| > 2$ is considered an outlier worth inspection. RMSZ is the root-mean-square of all Z scores of the bond lengths (or angles).

Mol	Type	Chain	Res	Link	Bond lengths			Bond angles		
					Counts	RMSZ	# Z > 2	Counts	RMSZ	# Z > 2
2	5F9	D	301	-	69,71,71	1.09	7 (10%)	91,97,97	1.86	18 (19%)
2	5F9	A	301	-	69,71,71	0.91	4 (5%)	91,97,97	1.75	16 (17%)

In the following table, the Chirals column lists the number of chiral outliers, the number of chiral centers analysed, the number of these observed in the model and the number defined in the Chemical Component Dictionary. Similar counts are reported in the Torsion and Rings columns. '-' means no outliers of that kind were identified.

Mol	Type	Chain	Res	Link	Chirals	Torsions	Rings
2	5F9	D	301	-	-	19/70/86/86	0/3/3/3
2	5F9	A	301	-	-	17/70/86/86	0/3/3/3

All (11) bond length outliers are listed below:

Mol	Chain	Res	Type	Atoms	Z	Observed(Å)	Ideal(Å)
2	D	301	5F9	C55-C53	3.74	1.54	1.50
2	D	301	5F9	P32-O27	3.53	1.63	1.59
2	D	301	5F9	O54-C53	3.10	1.25	1.21
2	D	301	5F9	P26-O27	2.90	1.62	1.59
2	D	301	5F9	C7-N8	-2.89	1.33	1.39
2	A	301	5F9	C7-N8	-2.75	1.34	1.39
2	A	301	5F9	P26-O27	2.61	1.62	1.59
2	A	301	5F9	C53-S52	-2.57	1.70	1.76
2	D	301	5F9	C6-N10	-2.23	1.33	1.37
2	D	301	5F9	C9-N10	-2.14	1.33	1.37
2	A	301	5F9	P18-O17	2.11	1.63	1.59

All (34) bond angle outliers are listed below:

Mol	Chain	Res	Type	Atoms	Z	Observed(°)	Ideal(°)
2	D	301	5F9	O54-C53-C55	-6.73	116.22	123.98
2	A	301	5F9	C55-C53-S52	6.42	121.05	113.40
2	D	301	5F9	C55-C53-S52	6.37	121.00	113.40
2	A	301	5F9	C7-C6-N84	-5.43	119.23	126.72
2	A	301	5F9	O54-C53-C55	-5.24	117.93	123.98
2	D	301	5F9	C7-C6-N84	-5.12	119.67	126.72
2	A	301	5F9	N84-C83-N82	-5.09	120.88	128.58
2	D	301	5F9	N84-C83-N82	-4.22	122.19	128.58
2	D	301	5F9	C45-N43-C42	-4.10	115.19	122.55
2	D	301	5F9	N10-C9-N8	-3.91	108.38	113.94
2	A	301	5F9	N84-C6-N10	3.79	133.61	127.17
2	A	301	5F9	C51-S52-C53	3.54	112.32	101.84
2	A	301	5F9	N10-C9-N8	-3.54	108.92	113.94
2	A	301	5F9	C83-N84-C6	3.43	120.22	111.83
2	D	301	5F9	N84-C6-N10	3.30	132.78	127.17
2	D	301	5F9	C40-C42-N43	3.15	122.46	116.48
2	D	301	5F9	C6-C7-N8	-3.14	107.00	110.58

Continued on next page...

Continued from previous page...

Mol	Chain	Res	Type	Atoms	Z	Observed(°)	Ideal(°)
2	D	301	5F9	C7-N8-C9	3.13	108.37	103.45
2	D	301	5F9	C83-N84-C6	3.04	119.25	111.83
2	D	301	5F9	C51-S52-C53	2.95	110.55	101.84
2	D	301	5F9	C6-N10-C9	2.82	108.70	105.74
2	A	301	5F9	C7-N8-C9	2.73	107.74	103.45
2	A	301	5F9	C39-C37-C36	2.72	112.71	108.22
2	D	301	5F9	O17-P18-O21	-2.66	99.84	109.33
2	A	301	5F9	C40-C42-N43	2.63	121.48	116.48
2	D	301	5F9	O20-P18-O19	2.56	117.39	107.80
2	A	301	5F9	C46-C45-N43	2.51	117.35	112.00
2	A	301	5F9	C6-N10-C9	2.46	108.32	105.74
2	D	301	5F9	O44-C42-N43	-2.45	117.79	122.98
2	A	301	5F9	C6-C7-N8	-2.37	107.87	110.58
2	A	301	5F9	O27-P32-O34	-2.19	104.11	110.70
2	A	301	5F9	O29-P26-O27	2.10	112.94	107.27
2	D	301	5F9	C80-C7-C6	2.07	120.01	117.18
2	D	301	5F9	O29-P26-O27	2.00	112.68	107.27

There are no chirality outliers.

All (36) torsion outliers are listed below:

Mol	Chain	Res	Type	Atoms
2	A	301	5F9	C37-C40-C42-O44
2	A	301	5F9	C37-C40-C42-N43
2	A	301	5F9	O41-C40-C42-N43
2	A	301	5F9	C53-C55-C56-C57
2	D	301	5F9	O41-C40-C42-N43
2	D	301	5F9	C50-C51-S52-C53
2	D	301	5F9	O54-C53-S52-C51
2	D	301	5F9	C55-C53-S52-C51
2	A	301	5F9	C46-C45-N43-C42
2	D	301	5F9	C61-C62-C63-C64
2	D	301	5F9	C62-C63-C64-C65
2	A	301	5F9	C61-C62-C63-C64
2	A	301	5F9	C59-C60-C61-C62
2	D	301	5F9	C68-C69-C70-C71
2	A	301	5F9	C62-C63-C64-C65
2	D	301	5F9	C60-C61-C62-C63
2	A	301	5F9	C56-C57-C58-C59
2	D	301	5F9	C56-C57-C58-C59
2	D	301	5F9	C55-C56-C57-C58
2	A	301	5F9	O41-C40-C42-O44

Continued on next page...

Continued from previous page...

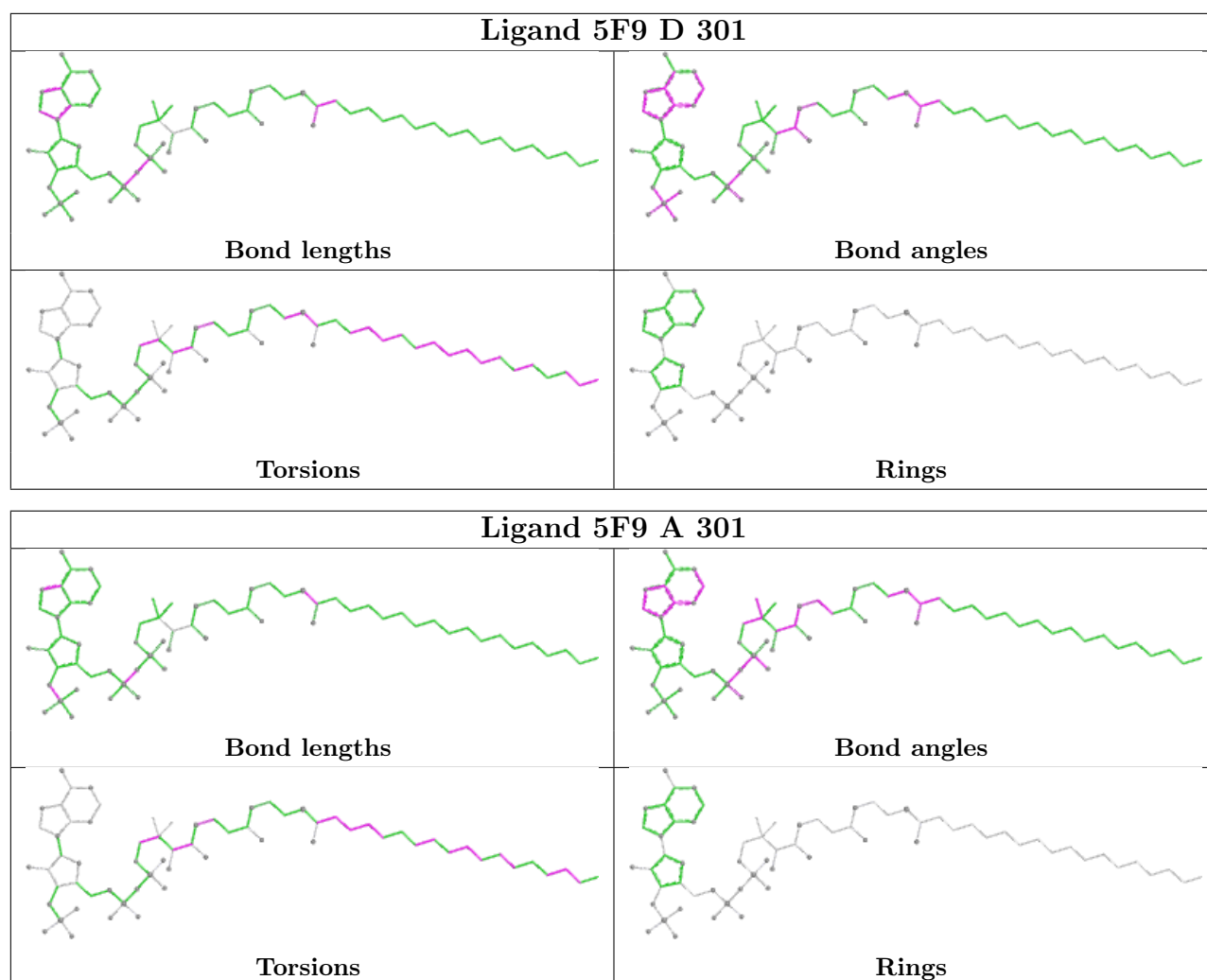
Mol	Chain	Res	Type	Atoms
2	D	301	5F9	C70-C71-C72-C73
2	A	301	5F9	S52-C53-C55-C56
2	A	301	5F9	O54-C53-C55-C56
2	A	301	5F9	C68-C69-C70-C71
2	D	301	5F9	O41-C40-C42-O44
2	A	301	5F9	C64-C65-C66-C67
2	A	301	5F9	C55-C56-C57-C58
2	D	301	5F9	C57-C58-C59-C60
2	D	301	5F9	C69-C70-C71-C72
2	D	301	5F9	C59-C60-C61-C62
2	D	301	5F9	C65-C66-C67-C68
2	D	301	5F9	C46-C45-N43-C42
2	D	301	5F9	C63-C64-C65-C66
2	A	301	5F9	O33-C36-C37-C39
2	D	301	5F9	O33-C36-C37-C38
2	A	301	5F9	C67-C68-C69-C70

There are no ring outliers.

2 monomers are involved in 6 short contacts:

Mol	Chain	Res	Type	Clashes	Symm-Clashes
2	D	301	5F9	4	0
2	A	301	5F9	2	0

The following is a two-dimensional graphical depiction of Mogul quality analysis of bond lengths, bond angles, torsion angles, and ring geometry for all instances of the Ligand of Interest. In addition, ligands with molecular weight > 250 and outliers as shown on the validation Tables will also be included. For torsion angles, if less than 5% of the Mogul distribution of torsion angles is within 10 degrees of the torsion angle in question, then that torsion angle is considered an outlier. Any bond that is central to one or more torsion angles identified as an outlier by Mogul will be highlighted in the graph. For rings, the root-mean-square deviation (RMSD) between the ring in question and similar rings identified by Mogul is calculated over all ring torsion angles. If the average RMSD is greater than 60 degrees and the minimal RMSD between the ring in question and any Mogul-identified rings is also greater than 60 degrees, then that ring is considered an outlier. The outliers are highlighted in purple. The color gray indicates Mogul did not find sufficient equivalents in the CSD to analyse the geometry.



5.7 Other polymers [i](#)

There are no such residues in this entry.

5.8 Polymer linkage issues [i](#)

There are no chain breaks in this entry.

6 Fit of model and data

6.1 Protein, DNA and RNA chains

In the following table, the column labelled ‘#RSRZ > 2’ contains the number (and percentage) of RSRZ outliers, followed by percent RSRZ outliers for the chain as percentile scores relative to all X-ray entries and entries of similar resolution. The OWAB column contains the minimum, median, 95th percentile and maximum values of the occupancy-weighted average B-factor per residue. The column labelled ‘Q < 0.9’ lists the number of (and percentage) of residues with an average occupancy less than 0.9.

Mol	Chain	Analysed	<RSRZ>	#RSRZ>2	OWAB(Å ²)	Q<0.9
1	A	244/263 (92%)	-0.23	5 (2%) 65 66	7, 19, 45, 74	0
1	B	240/263 (91%)	0.02	6 (2%) 58 59	8, 29, 63, 104	0
1	C	246/263 (93%)	0.21	11 (4%) 38 35	10, 31, 72, 86	0
1	D	244/263 (92%)	-0.21	4 (1%) 70 72	8, 20, 48, 74	0
1	E	239/263 (90%)	0.20	13 (5%) 31 28	11, 31, 62, 93	0
1	F	244/263 (92%)	0.12	8 (3%) 49 48	11, 30, 63, 99	0
All	All	1457/1578 (92%)	0.02	47 (3%) 50 49	7, 26, 62, 104	0

All (47) RSRZ outliers are listed below:

Mol	Chain	Res	Type	RSRZ
1	E	68	ALA	6.4
1	C	-2	GLY	4.3
1	C	233	MET	4.1
1	C	41	ASP	3.9
1	B	68	ALA	3.8
1	F	41	ASP	3.8
1	A	64	GLY	3.7
1	E	62	LEU	3.6
1	F	67	PHE	3.6
1	F	66	ALA	3.4
1	A	40	GLY	3.3
1	C	40	GLY	3.2
1	A	42	GLY	3.1
1	F	233	MET	3.0
1	F	0	HIS	3.0
1	C	237	PRO	2.9
1	C	63	SER	2.9
1	E	40	GLY	2.9
1	E	8	GLU	2.9

Continued on next page...

Continued from previous page...

Mol	Chain	Res	Type	RSRZ
1	A	63	SER	2.8
1	A	0	HIS	2.8
1	B	42	GLY	2.7
1	E	69	ALA	2.7
1	B	70	ASP	2.7
1	C	64	GLY	2.7
1	D	207	GLU	2.6
1	D	63	SER	2.6
1	F	64	GLY	2.5
1	B	26	SER	2.5
1	D	8	GLU	2.5
1	B	69	ALA	2.4
1	E	41	ASP	2.4
1	E	0	HIS	2.4
1	C	230	VAL	2.4
1	C	232	ARG	2.3
1	E	241	GLN	2.2
1	D	40	GLY	2.2
1	C	229	GLN	2.2
1	B	9	ALA	2.1
1	E	20	ARG	2.1
1	E	2	ILE	2.1
1	F	225	VAL	2.1
1	E	7	ALA	2.1
1	C	67	PHE	2.1
1	E	45	ARG	2.1
1	E	26	SER	2.1
1	F	238	PRO	2.0

6.2 Non-standard residues in protein, DNA, RNA chains [i](#)

There are no non-standard protein/DNA/RNA residues in this entry.

6.3 Carbohydrates [i](#)

There are no oligosaccharides in this entry.

6.4 Ligands [i](#)

In the following table, the Atoms column lists the number of modelled atoms in the group and the number defined in the chemical component dictionary. The B-factors column lists the minimum,

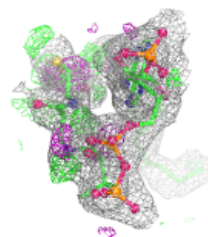
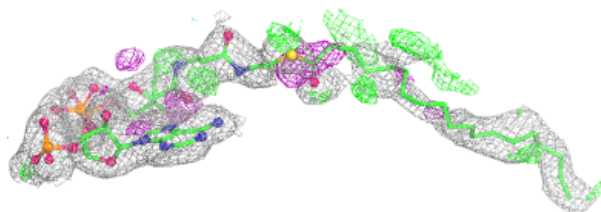
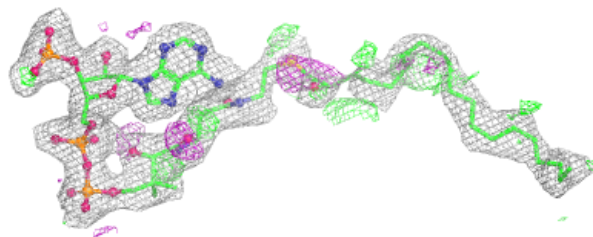
median, 95th percentile and maximum values of B factors of atoms in the group. The column labelled 'Q<0.9' lists the number of atoms with occupancy less than 0.9.

Mol	Type	Chain	Res	Atoms	RSCC	RSR	B-factors(\AA^2)	Q<0.9
2	5F9	D	301	69/69	0.87	0.14	34,34,34,34	0
2	5F9	A	301	69/69	0.92	0.11	33,33,33,33	0

The following is a graphical depiction of the model fit to experimental electron density of all instances of the Ligand of Interest. In addition, ligands with molecular weight > 250 and outliers as shown on the geometry validation Tables will also be included. Each fit is shown from different orientation to approximate a three-dimensional view.

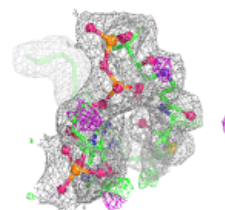
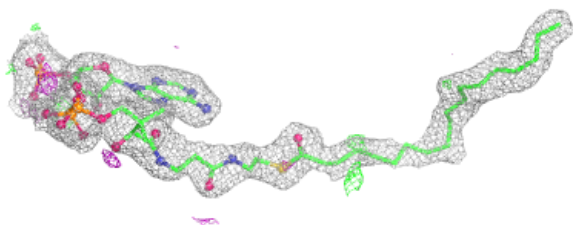
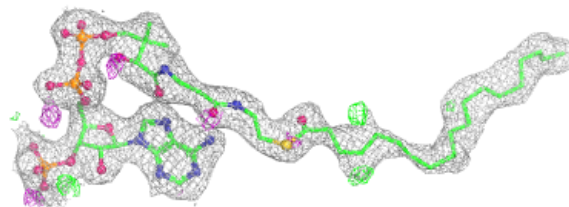
Electron density around 5F9 D 301:

2mF_o-DF_c (at 0.7 rmsd) in gray
mF_o-DF_c (at 3 rmsd) in purple (negative)
and green (positive)



Electron density around 5F9 A 301:

$2mF_o-DF_c$ (at 0.7 rmsd) in gray
 mF_o-DF_c (at 3 rmsd) in purple (negative)
and green (positive)



6.5 Other polymers [i](#)

There are no such residues in this entry.