



# Full wwPDB X-ray Structure Validation Report ⓘ

Mar 8, 2026 – 02:11 PM UTC

PDB ID : 5FPM / pdb\_00005fpm  
Title : Structure of heat shock-related 70kDA protein 2 with small-molecule ligand 5-phenyl-1,3,4-oxadiazole-2-thiol (AT809) in an alternate binding site.  
Authors : Jhoti, H.; Ludlow, R.F.; Patel, S.; Saini, H.K.; Tickle, I.J.; Verdonk, M.  
Deposited on : 2015-12-02  
Resolution : 1.96 Å(reported)

This is a Full wwPDB X-ray Structure Validation Report for a publicly released PDB entry.

We welcome your comments at [validation@mail.wwpdb.org](mailto:validation@mail.wwpdb.org)

A user guide is available at

<https://www.wwpdb.org/validation/2017/XrayValidationReportHelp>

with specific help available everywhere you see the ⓘ symbol.

The types of validation reports are described at

<http://www.wwpdb.org/validation/2017/FAQs#types>.

---

The following versions of software and data (see [references ⓘ](#)) were used in the production of this report:

MolProbity	:	4-5-2 with Phenix2.0
Mogul	:	2022.3.0, CSD as543be (2022)
Xtriage (Phenix)	:	2.0
EDS	:	3.0
Percentile statistics	:	20250101.v01 (using entries in the PDB archive January 1st 2025)
CCP4	:	9.0.010 (Gargrove)
Density-Fitness	:	1.0.12
Ideal geometry (proteins)	:	Engh & Huber (2001)
Ideal geometry (DNA, RNA)	:	Parkinson et al. (1996)
Validation Pipeline (wwPDB-VP)	:	2.49

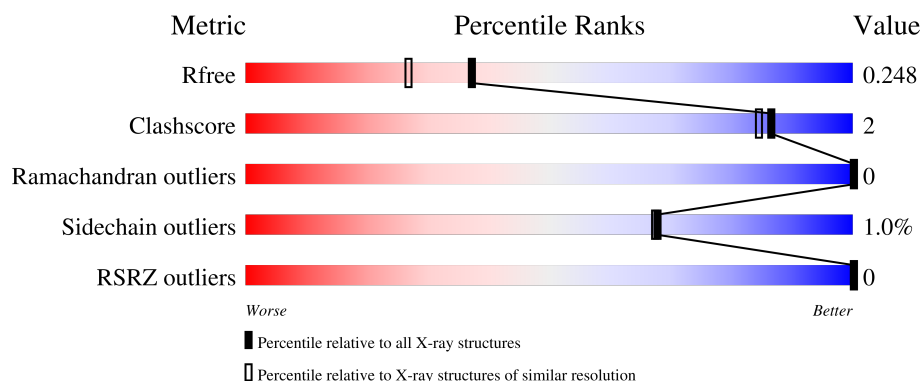
# 1 Overall quality at a glance

The following experimental techniques were used to determine the structure:

*X-RAY DIFFRACTION*

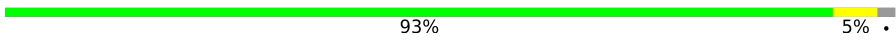

The reported resolution of this entry is 1.96 Å.

Percentile scores (ranging between 0-100) for global validation metrics of the entry are shown in the following graphic. The table shows the number of entries on which the scores are based.



Metric	Whole archive (#Entries)	Similar resolution (#Entries, resolution range(Å))
$R_{free}$	180053	3494 (1.96-1.96)
Clashscore	190562	3612 (1.96-1.96)
Ramachandran outliers	187476	3587 (1.96-1.96)
Sidechain outliers	187428	3587 (1.96-1.96)
RSRZ outliers	180081	3495 (1.96-1.96)

The table below summarises the geometric issues observed across the polymeric chains and their fit to the electron density. The red, orange, yellow and green segments of the lower bar indicate the fraction of residues that contain outliers for  $\geq 3$ , 2, 1 and 0 types of geometric quality criteria respectively. A grey segment represents the fraction of residues that are not modelled. The numeric value for each fraction is indicated below the corresponding segment, with a dot representing fractions  $\leq 5\%$ . The upper red bar (where present) indicates the fraction of residues that have poor fit to the electron density. The numeric value is given above the bar.

Mol	Chain	Length	Quality of chain
1	A	387	 93% 5% •
1	B	387	 90% 7% •

## 2 Entry composition

There are 3 unique types of molecules in this entry. The entry contains 6905 atoms, of which 12 are hydrogens and 0 are deuteriums.

In the tables below, the ZeroOcc column contains the number of atoms modelled with zero occupancy, the AltConf column contains the number of residues with at least one atom in alternate conformation and the Trace column contains the number of residues modelled with at most 2 atoms.

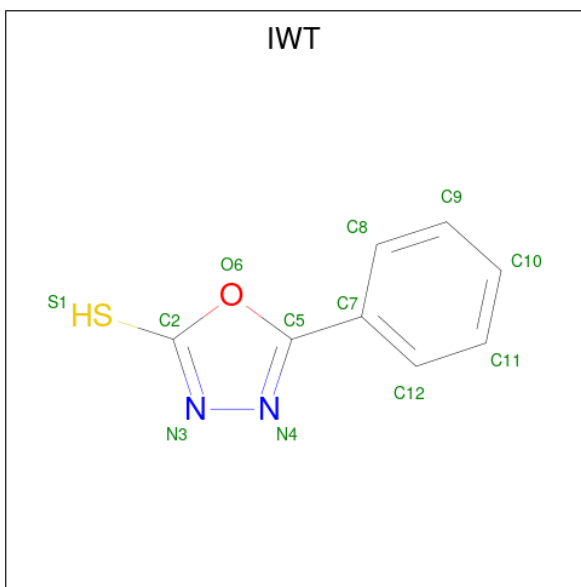
- Molecule 1 is a protein called HEAT SHOCK-RELATED 70KDA PROTEIN 2.

Mol	Chain	Residues	Atoms					ZeroOcc	AltConf	Trace
1	A	381	Total	C	N	O	S	0	0	2
			2889	1822	501	559	7			
1	B	379	Total	C	N	O	S	0	0	0
			2887	1820	496	563	8			

There are 10 discrepancies between the modelled and reference sequences:

Chain	Residue	Modelled	Actual	Comment	Reference
A	-3	GLY	-	expression tag	UNP P54652
A	-2	SER	-	expression tag	UNP P54652
A	-1	HIS	-	expression tag	UNP P54652
A	?	-	SER	deletion	UNP P54652
A	?	-	ALA	deletion	UNP P54652
B	-3	GLY	-	expression tag	UNP P54652
B	-2	SER	-	expression tag	UNP P54652
B	-1	HIS	-	expression tag	UNP P54652
B	?	-	SER	deletion	UNP P54652
B	?	-	ALA	deletion	UNP P54652

- Molecule 2 is 5-PHENYL-1,3,4-OXADIAZOLE-2-THIOL (CCD ID: IWT) (formula: C<sub>8</sub>H<sub>6</sub>N<sub>2</sub>OS).



Mol	Chain	Residues	Atoms						ZeroOcc	AltConf
2	A	1	Total	C	H	N	O	S	0	0
			18	8	6	2	1	1		
2	B	1	Total	C	H	N	O	S	0	0
			18	8	6	2	1	1		

- Molecule 3 is water.

Mol	Chain	Residues	Atoms		ZeroOcc	AltConf
3	A	559	Total	O	0	0
			559	559		
3	B	534	Total	O	0	0
			534	534		

### 3 Residue-property plots

These plots are drawn for all protein, RNA, DNA and oligosaccharide chains in the entry. The first graphic for a chain summarises the proportions of the various outlier classes displayed in the second graphic. The second graphic shows the sequence view annotated by issues in geometry and electron density. Residues are color-coded according to the number of geometric quality criteria for which they contain at least one outlier: green = 0, yellow = 1, orange = 2 and red = 3 or more. A red dot above a residue indicates a poor fit to the electron density ( $RSRZ > 2$ ). Stretches of 2 or more consecutive residues without any outlier are shown as a green connector. Residues present in the sample, but not in the model, are shown in grey.

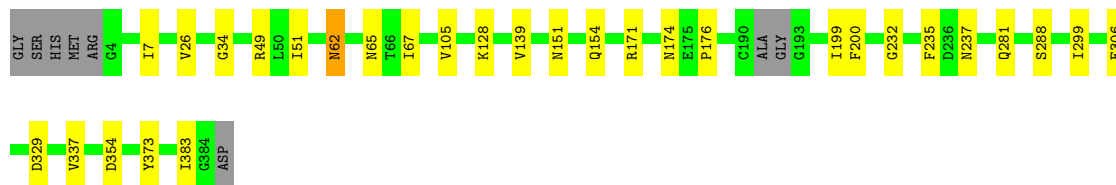
- Molecule 1: HEAT SHOCK-RELATED 70KDA PROTEIN 2

Chain A: 



- Molecule 1: HEAT SHOCK-RELATED 70KDA PROTEIN 2

Chain B: 



## 4 Data and refinement statistics

Property	Value	Source
Space group	P 1 21 1	Depositor
Cell constants a, b, c, $\alpha$ , $\beta$ , $\gamma$	48.86Å 94.96Å 81.54Å 90.00° 89.98° 90.00°	Depositor
Resolution (Å)	38.37 – 1.96 38.37 – 1.96	Depositor EDS
% Data completeness (in resolution range)	97.6 (38.37-1.96) 97.6 (38.37-1.96)	Depositor EDS
$R_{merge}$	0.06	Depositor
$R_{sym}$	(Not available)	Depositor
$\langle I/\sigma(I) \rangle$ <sup>1</sup>	3.08 (at 1.95Å)	Xtriage
Refinement program	BUSTER 2.11.6	Depositor
R, $R_{free}$	0.170 , 0.218 (Not available) , 0.248	Depositor DCC
$R_{free}$ test set	2660 reflections (5.08%)	wwPDB-VP
Wilson B-factor (Å <sup>2</sup> )	21.1	Xtriage
Anisotropy	0.168	Xtriage
Bulk solvent $k_{sol}$ (e/Å <sup>3</sup> ), $B_{sol}$ (Å <sup>2</sup> )	0.37 , 56.2	EDS
L-test for twinning <sup>2</sup>	$\langle  L  \rangle = 0.52$ , $\langle L^2 \rangle = 0.36$	Xtriage
Estimated twinning fraction	0.360 for h,-k,-l	Xtriage
$F_o, F_c$ correlation	0.97	EDS
Total number of atoms	6905	wwPDB-VP
Average B, all atoms (Å <sup>2</sup> )	26.0	wwPDB-VP

Xtriage's analysis on translational NCS is as follows: *The largest off-origin peak in the Patterson function is 6.73% of the height of the origin peak. No significant pseudotranslation is detected.*

<sup>1</sup>Intensities estimated from amplitudes.

<sup>2</sup>Theoretical values of  $\langle |L| \rangle$ ,  $\langle L^2 \rangle$  for acentric reflections are 0.5, 0.333 respectively for untwinned datasets, and 0.375, 0.2 for perfectly twinned datasets.

## 5 Model quality

### 5.1 Standard geometry

Bond lengths and bond angles in the following residue types are not validated in this section: IWT

The Z score for a bond length (or angle) is the number of standard deviations the observed value is removed from the expected value. A bond length (or angle) with  $|Z| > 5$  is considered an outlier worth inspection. RMSZ is the root-mean-square of all Z scores of the bond lengths (or angles).

Mol	Chain	Bond lengths		Bond angles	
		RMSZ	$\# Z  > 5$	RMSZ	$\# Z  > 5$
1	A	0.98	1/2934 (0.0%)	1.07	1/3964 (0.0%)
1	B	1.00	0/2932	1.07	5/3962 (0.1%)
All	All	0.99	1/5866 (0.0%)	1.07	6/7926 (0.1%)

All (1) bond length outliers are listed below:

Mol	Chain	Res	Type	Atoms	Z	Observed(Å)	Ideal(Å)
1	A	384	GLY	C-N	-5.41	1.25	1.33

All (6) bond angle outliers are listed below:

Mol	Chain	Res	Type	Atoms	Z	Observed(°)	Ideal(°)
1	B	237	ASN	CA-CB-CG	6.20	118.80	112.60
1	B	62	ASN	CA-CB-CG	6.01	118.61	112.60
1	B	7	ILE	N-CA-C	5.60	116.01	108.17
1	B	354	ASP	CA-CB-CG	5.48	118.08	112.60
1	A	200	PHE	CA-CB-CG	5.29	119.09	113.80
1	B	200	PHE	CA-CB-CG	5.23	119.03	113.80

There are no chirality outliers.

There are no planarity outliers.

### 5.2 Too-close contacts

In the following table, the Non-H and H(model) columns list the number of non-hydrogen atoms and hydrogen atoms in the chain respectively. The H(added) column lists the number of hydrogen atoms added and optimized by MolProbity. The Clashes column lists the number of clashes within the asymmetric unit, whereas Symm-Clashes lists symmetry-related clashes.

Mol	Chain	Non-H	H(model)	H(added)	Clashes	Symm-Clashes
1	A	2889	0	2852	13	0
1	B	2887	0	2843	12	2
2	A	12	6	6	1	0
2	B	12	6	6	1	0
3	A	559	0	0	4	3
3	B	534	0	0	0	3
All	All	6893	12	5707	24	4

The all-atom clashscore is defined as the number of clashes found per 1000 atoms (including hydrogen atoms). The all-atom clashscore for this structure is 2.

All (24) close contacts within the same asymmetric unit are listed below, sorted by their clash magnitude.

Atom-1	Atom-2	Interatomic distance (Å)	Clash overlap (Å)
1:B:49:ARG:HD3	1:B:51:ILE:HD11	1.62	0.81
1:A:130:ILE:HG12	3:A:2084:HOH:O	1.93	0.68
1:B:151:ASN:H	1:B:154:GLN:HE21	1.41	0.67
1:A:151:ASN:H	1:A:154:GLN:HE21	1.42	0.65
1:B:62:ASN:HD21	1:B:65:ASN:HD22	1.54	0.55
1:A:151:ASN:H	1:A:154:GLN:NE2	2.07	0.53
1:A:350:LYS:HG2	3:A:2528:HOH:O	2.08	0.52
1:A:36:ARG:HG2	3:A:2073:HOH:O	2.08	0.52
1:B:232:GLY:HA2	1:B:235:PHE:CD2	2.48	0.49
1:B:199:ILE:HD13	1:B:337:VAL:HB	1.95	0.49
1:B:171:ARG:HA	2:B:1385:IWT:S1	2.54	0.47
1:B:174:ASN:HB3	1:B:176:PRO:HD2	1.97	0.47
1:A:61:MET:O	1:B:34:GLY:HA3	2.14	0.47
1:A:12:GLY:HA3	1:A:15:TYR:O	2.17	0.45
1:A:213:THR:HG23	1:A:222:LYS:HG3	1.99	0.45
1:A:62:ASN:HD21	1:A:65:ASN:HD22	1.64	0.44
1:A:25:LYS:HG3	3:A:2046:HOH:O	2.17	0.44
1:B:128:LYS:HE2	1:B:139:VAL:O	2.18	0.43
1:A:196:ASN:OD1	1:A:213:THR:HG22	2.18	0.43
1:B:26:VAL:HG11	1:B:373:TYR:HA	2.01	0.42
1:B:151:ASN:H	1:B:154:GLN:NE2	2.13	0.42
1:B:67:ILE:HD11	1:B:105:VAL:CG1	2.50	0.42
1:A:145:THR:HG22	1:A:173:ILE:HG13	2.01	0.41
1:A:171:ARG:HA	2:A:1385:IWT:S1	2.61	0.40

All (4) symmetry-related close contacts are listed below. The label for Atom-2 includes the symmetry operator and encoded unit-cell translations to be applied.



Atom-1	Atom-2	Interatomic distance (Å)	Clash overlap (Å)
1:B:306:GLU:OE2	3:B:2270:HOH:O[2_746]	1.90	0.30
1:B:329:ASP:OD2	3:A:2464:HOH:O[2_646]	2.08	0.12
3:A:2304:HOH:O	3:B:2312:HOH:O[1_554]	2.09	0.11
3:A:2411:HOH:O	3:B:2511:HOH:O[2_656]	2.09	0.11

## 5.3 Torsion angles [i](#)

### 5.3.1 Protein backbone [i](#)

In the following table, the Percentiles column shows the percent Ramachandran outliers of the chain as a percentile score with respect to all X-ray entries followed by that with respect to entries of similar resolution.

The Analysed column shows the number of residues for which the backbone conformation was analysed, and the total number of residues.

Mol	Chain	Analysed	Favoured	Allowed	Outliers	Percentiles	
1	A	377/387 (97%)	369 (98%)	8 (2%)	0	100	100
1	B	375/387 (97%)	371 (99%)	4 (1%)	0	100	100
All	All	752/774 (97%)	740 (98%)	12 (2%)	0	100	100

There are no Ramachandran outliers to report.

### 5.3.2 Protein sidechains [i](#)

In the following table, the Percentiles column shows the percent sidechain outliers of the chain as a percentile score with respect to all X-ray entries followed by that with respect to entries of similar resolution.

The Analysed column shows the number of residues for which the sidechain conformation was analysed, and the total number of residues.

Mol	Chain	Analysed	Rotameric	Outliers	Percentiles	
1	A	296/316 (94%)	294 (99%)	2 (1%)	76	76
1	B	298/316 (94%)	294 (99%)	4 (1%)	61	58
All	All	594/632 (94%)	588 (99%)	6 (1%)	68	67

All (6) residues with a non-rotameric sidechain are listed below:

Mol	Chain	Res	Type
1	A	281	GLN
1	A	383	ILE
1	B	281	GLN
1	B	288	SER
1	B	299	ILE
1	B	383	ILE

Sometimes sidechains can be flipped to improve hydrogen bonding and reduce clashes. All (11) such sidechains are listed below:

Mol	Chain	Res	Type
1	A	62	ASN
1	A	154	GLN
1	A	353	GLN
1	A	357	ASN
1	B	35	ASN
1	B	62	ASN
1	B	104	GLN
1	B	154	GLN
1	B	281	GLN
1	B	353	GLN
1	B	357	ASN

### 5.3.3 RNA [i](#)

There are no RNA molecules in this entry.

## 5.4 Non-standard residues in protein, DNA, RNA chains [i](#)

There are no non-standard protein/DNA/RNA residues in this entry.

## 5.5 Carbohydrates [i](#)

There are no oligosaccharides in this entry.

## 5.6 Ligand geometry [i](#)

2 ligands are modelled in this entry.

In the following table, the Counts columns list the number of bonds (or angles) for which Mogul statistics could be retrieved, the number of bonds (or angles) that are observed in the model and

the number of bonds (or angles) that are defined in the Chemical Component Dictionary. The Link column lists molecule types, if any, to which the group is linked. The Z score for a bond length (or angle) is the number of standard deviations the observed value is removed from the expected value. A bond length (or angle) with  $|Z| > 2$  is considered an outlier worth inspection. RMSZ is the root-mean-square of all Z scores of the bond lengths (or angles).

Mol	Type	Chain	Res	Link	Bond lengths			Bond angles		
					Counts	RMSZ	# Z  > 2	Counts	RMSZ	# Z  > 2
2	IWT	B	1385	-	13,13,13	0.72	1 (7%)	16,17,17	0.79	1 (6%)
2	IWT	A	1385	-	13,13,13	1.16	1 (7%)	16,17,17	1.90	3 (18%)

In the following table, the Chirals column lists the number of chiral outliers, the number of chiral centers analysed, the number of these observed in the model and the number defined in the Chemical Component Dictionary. Similar counts are reported in the Torsion and Rings columns. '-' means no outliers of that kind were identified.

Mol	Type	Chain	Res	Link	Chirals	Torsions	Rings
2	IWT	B	1385	-	-	0/4/4/4	0/2/2/2
2	IWT	A	1385	-	-	0/4/4/4	0/2/2/2

All (2) bond length outliers are listed below:

Mol	Chain	Res	Type	Atoms	Z	Observed(Å)	Ideal(Å)
2	A	1385	IWT	C2-N3	4.03	1.34	1.29
2	B	1385	IWT	C2-N3	2.27	1.32	1.29

All (4) bond angle outliers are listed below:

Mol	Chain	Res	Type	Atoms	Z	Observed(°)	Ideal(°)
2	A	1385	IWT	S1-C2-N3	5.90	138.09	128.51
2	A	1385	IWT	O6-C2-N3	-3.60	108.12	112.84
2	A	1385	IWT	C2-O6-C5	2.46	105.12	102.37
2	B	1385	IWT	O6-C2-N3	-2.43	109.66	112.84

There are no chirality outliers.

There are no torsion outliers.

There are no ring outliers.

2 monomers are involved in 2 short contacts:

Mol	Chain	Res	Type	Clashes	Symm-Clashes
2	B	1385	IWT	1	0
2	A	1385	IWT	1	0

## 5.7 Other polymers [i](#)

There are no such residues in this entry.

## 5.8 Polymer linkage issues [i](#)

There are no chain breaks in this entry.

## 6 Fit of model and data [i](#)

### 6.1 Protein, DNA and RNA chains [i](#)

In the following table, the column labelled ‘#RSRZ> 2’ contains the number (and percentage) of RSRZ outliers, followed by percent RSRZ outliers for the chain as percentile scores relative to all X-ray entries and entries of similar resolution. The OWAB column contains the minimum, median, 95<sup>th</sup> percentile and maximum values of the occupancy-weighted average B-factor per residue. The column labelled ‘Q< 0.9’ lists the number of (and percentage) of residues with an average occupancy less than 0.9.

Mol	Chain	Analysed	<RSRZ>	#RSRZ>2	OWAB(Å <sup>2</sup> )	Q<0.9
1	A	381/387 (98%)	-1.41	0 100 100	13, 22, 39, 68	0
1	B	379/387 (97%)	-1.26	0 100 100	13, 22, 38, 82	0
All	All	760/774 (98%)	-1.34	0 100 100	13, 22, 39, 82	0

There are no RSRZ outliers to report.

### 6.2 Non-standard residues in protein, DNA, RNA chains [i](#)

There are no non-standard protein/DNA/RNA residues in this entry.

### 6.3 Carbohydrates [i](#)

There are no oligosaccharides in this entry.

### 6.4 Ligands [i](#)

In the following table, the Atoms column lists the number of modelled atoms in the group and the number defined in the chemical component dictionary. The B-factors column lists the minimum, median, 95<sup>th</sup> percentile and maximum values of B factors of atoms in the group. The column labelled ‘Q< 0.9’ lists the number of atoms with occupancy less than 0.9.

Mol	Type	Chain	Res	Atoms	RSCC	RSR	B-factors(Å <sup>2</sup> )	Q<0.9
2	IWT	A	1385	12/12	0.97	0.05	18,27,35,35	18
2	IWT	B	1385	12/12	0.98	0.04	11,20,27,27	18

### 6.5 Other polymers [i](#)

There are no such residues in this entry.