



Full wwPDB X-ray Structure Validation Report ⓘ

Mar 6, 2026 – 08:35 PM UTC

PDB ID : 5G0J / pdb_00005g0j
Title : Crystal structure of Danio rerio HDAC6 CD1 and CD2 (linker intact) in complex with Nexturastat A
Authors : Miyake, Y.; Keusch, J.J.; Wang, L.; Saito, M.; Hess, D.; Wang, X.; Melancon, B.J.; Helquist, P.; Gut, H.; Matthias, P.
Deposited on : 2016-03-18
Resolution : 2.88 Å(reported)

This is a Full wwPDB X-ray Structure Validation Report for a publicly released PDB entry.

We welcome your comments at validation@mail.wwpdb.org

A user guide is available at

<https://www.wwpdb.org/validation/2017/XrayValidationReportHelp>

with specific help available everywhere you see the ⓘ symbol.

The types of validation reports are described at

<http://www.wwpdb.org/validation/2017/FAQs#types>.

The following versions of software and data (see [references ⓘ](#)) were used in the production of this report:

MolProbity	:	4-5-2 with Phenix2.0
Mogul	:	2022.3.0, CSD as543be (2022)
Xtriage (Phenix)	:	2.0
EDS	:	3.0
Percentile statistics	:	20250101.v01 (using entries in the PDB archive January 1st 2025)
CCP4	:	9.0.010 (Gargrove)
Density-Fitness	:	1.0.12
Ideal geometry (proteins)	:	Engh & Huber (2001)
Ideal geometry (DNA, RNA)	:	Parkinson et al. (1996)
Validation Pipeline (wwPDB-VP)	:	2.49

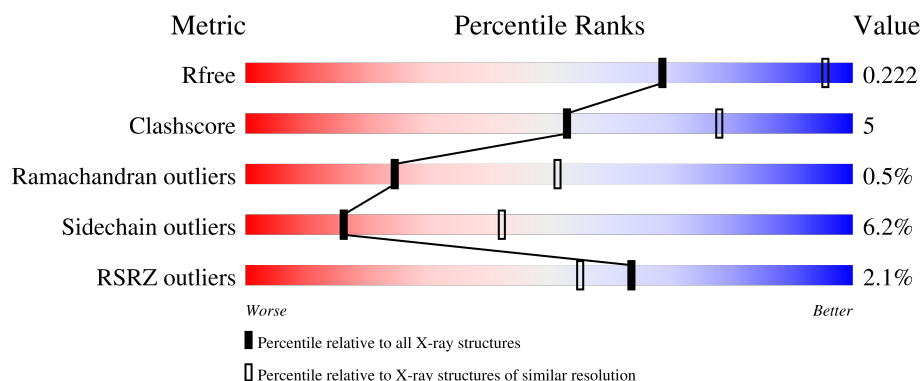
1 Overall quality at a glance

The following experimental techniques were used to determine the structure:

X-RAY DIFFRACTION

The reported resolution of this entry is 2.88 Å.

Percentile scores (ranging between 0-100) for global validation metrics of the entry are shown in the following graphic. The table shows the number of entries on which the scores are based.



Metric	Whole archive (#Entries)	Similar resolution (#Entries, resolution range(Å))
R_{free}	180053	3557 (2.90-2.86)
Clashscore	190562	3801 (2.90-2.86)
Ramachandran outliers	187476	3699 (2.90-2.86)
Sidechain outliers	187428	3702 (2.90-2.86)
RSRZ outliers	180081	3558 (2.90-2.86)

The table below summarises the geometric issues observed across the polymeric chains and their fit to the electron density. The red, orange, yellow and green segments of the lower bar indicate the fraction of residues that contain outliers for ≥ 3 , 2, 1 and 0 types of geometric quality criteria respectively. A grey segment represents the fraction of residues that are not modelled. The numeric value for each fraction is indicated below the corresponding segment, with a dot representing fractions $\leq 5\%$. The upper red bar (where present) indicates the fraction of residues that have poor fit to the electron density. The numeric value is given above the bar.

Mol	Chain	Length	Quality of chain
1	A	794	

2 Entry composition [i](#)

There are 6 unique types of molecules in this entry. The entry contains 6061 atoms, of which 0 are hydrogens and 0 are deuteriums.

In the tables below, the ZeroOcc column contains the number of atoms modelled with zero occupancy, the AltConf column contains the number of residues with at least one atom in alternate conformation and the Trace column contains the number of residues modelled with at most 2 atoms.

- Molecule 1 is a protein called HDAC6.

Mol	Chain	Residues	Atoms					ZeroOcc	AltConf	Trace
1	A	756	Total	C	N	O	S	0	1	0
			5866	3706	1021	1100	39			

There are 2 discrepancies between the modelled and reference sequences:

Chain	Residue	Modelled	Actual	Comment	Reference
A	38	GLY	-	expression tag	UNP F8W4B7
A	39	PRO	-	expression tag	UNP F8W4B7

- Molecule 2 is CHLORIDE ION (CCD ID: CL) (formula: Cl).

Mol	Chain	Residues	Atoms		ZeroOcc	AltConf
2	A	2	Total	Cl	0	0
			2	2		

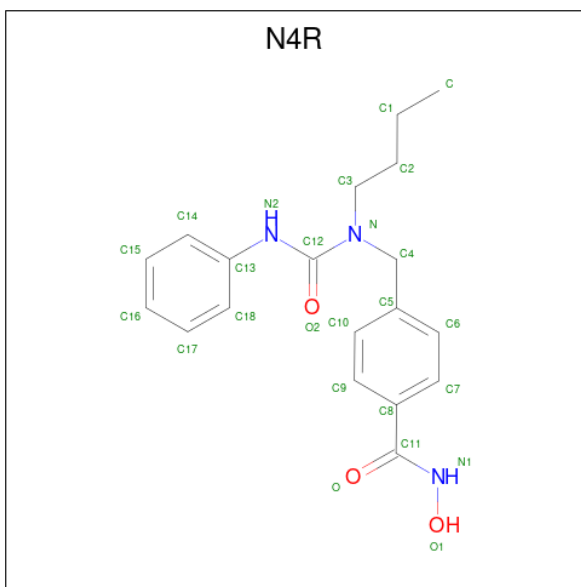
- Molecule 3 is ZINC ION (CCD ID: ZN) (formula: Zn).

Mol	Chain	Residues	Atoms		ZeroOcc	AltConf
3	A	1	Total	Zn	0	0
			1	1		

- Molecule 4 is POTASSIUM ION (CCD ID: K) (formula: K).

Mol	Chain	Residues	Atoms		ZeroOcc	AltConf
4	A	5	Total	K	0	0
			5	5		

- Molecule 5 is NEXTURASTAT A (CCD ID: N4R) (formula: C₁₉H₂₃N₃O₃).



Mol	Chain	Residues	Atoms				ZeroOcc	AltConf
5	A	1	Total	C	N	O	0	0
			25	19	3	3		

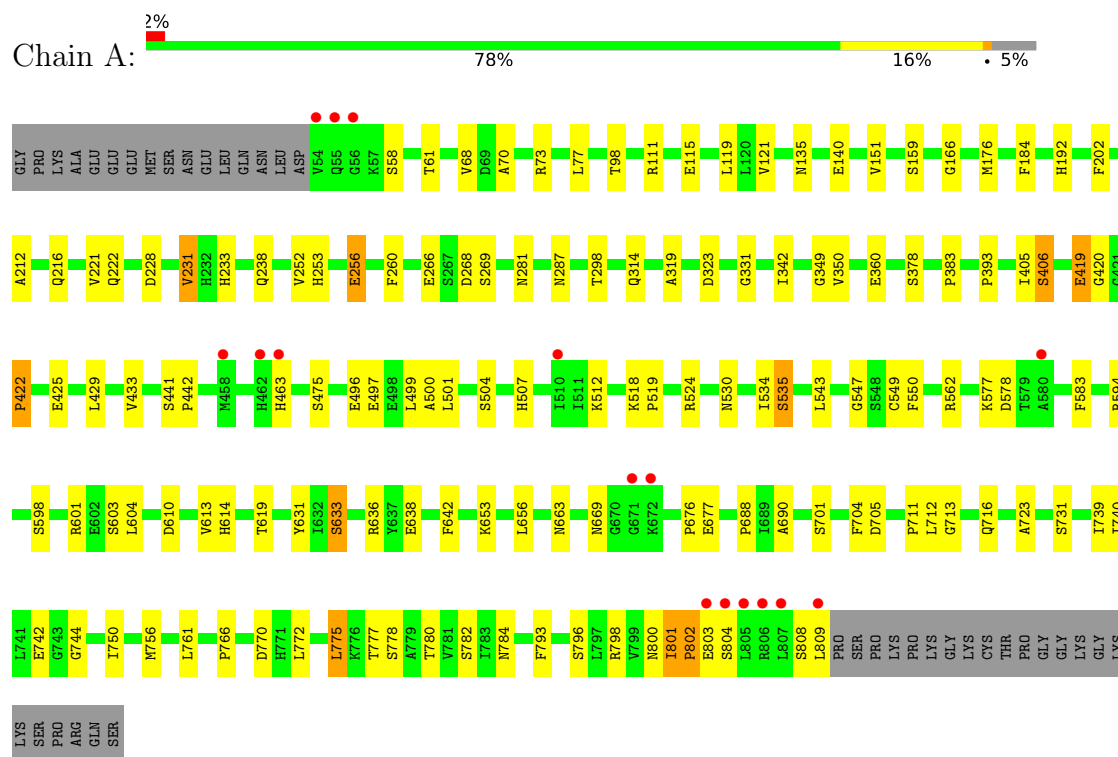
- Molecule 6 is water.

Mol	Chain	Residues	Atoms		ZeroOcc	AltConf
6	A	162	Total	O	0	0
			162	162		

3 Residue-property plots [i](#)

These plots are drawn for all protein, RNA, DNA and oligosaccharide chains in the entry. The first graphic for a chain summarises the proportions of the various outlier classes displayed in the second graphic. The second graphic shows the sequence view annotated by issues in geometry and electron density. Residues are color-coded according to the number of geometric quality criteria for which they contain at least one outlier: green = 0, yellow = 1, orange = 2 and red = 3 or more. A red dot above a residue indicates a poor fit to the electron density ($RSRZ > 2$). Stretches of 2 or more consecutive residues without any outlier are shown as a green connector. Residues present in the sample, but not in the model, are shown in grey.

• Molecule 1: HDAC6



4 Data and refinement statistics

Property	Value	Source
Space group	P 32 2 1	Depositor
Cell constants a, b, c, α , β , γ	187.22Å 187.22Å 102.72Å 90.00° 90.00° 120.00°	Depositor
Resolution (Å)	50.00 – 2.88 50.00 – 2.88	Depositor EDS
% Data completeness (in resolution range)	100.0 (50.00-2.88) 99.9 (50.00-2.88)	Depositor EDS
R_{merge}	0.08	Depositor
R_{sym}	(Not available)	Depositor
$\langle I/\sigma(I) \rangle$ ¹	2.77 (at 2.86Å)	Xtriage
Refinement program	BUSTER 2.11.5	Depositor
R, R_{free}	0.176 , 0.214 0.187 , 0.222	Depositor DCC
R_{free} test set	2387 reflections (5.05%)	wwPDB-VP
Wilson B-factor (Å ²)	74.9	Xtriage
Anisotropy	0.727	Xtriage
Bulk solvent k_{sol} (e/Å ³), B_{sol} (Å ²)	0.34 , 74.5	EDS
L-test for twinning ²	$\langle L \rangle = 0.49$, $\langle L^2 \rangle = 0.31$	Xtriage
Estimated twinning fraction	0.026 for -h,-k,l	Xtriage
F_o, F_c correlation	0.96	EDS
Total number of atoms	6061	wwPDB-VP
Average B, all atoms (Å ²)	90.0	wwPDB-VP

Xtriage's analysis on translational NCS is as follows: *The largest off-origin peak in the Patterson function is 3.77% of the height of the origin peak. No significant pseudotranslation is detected.*

¹Intensities estimated from amplitudes.

²Theoretical values of $\langle |L| \rangle$, $\langle L^2 \rangle$ for acentric reflections are 0.5, 0.333 respectively for untwinned datasets, and 0.375, 0.2 for perfectly twinned datasets.

5 Model quality ⓘ

5.1 Standard geometry ⓘ

Bond lengths and bond angles in the following residue types are not validated in this section: K, ZN, N4R, CL

The Z score for a bond length (or angle) is the number of standard deviations the observed value is removed from the expected value. A bond length (or angle) with $|Z| > 5$ is considered an outlier worth inspection. RMSZ is the root-mean-square of all Z scores of the bond lengths (or angles).

Mol	Chain	Bond lengths		Bond angles	
		RMSZ	$\# Z > 5$	RMSZ	$\# Z > 5$
1	A	0.89	2/6011 (0.0%)	1.41	24/8160 (0.3%)

All (2) bond length outliers are listed below:

Mol	Chain	Res	Type	Atoms	Z	Observed(Å)	Ideal(Å)
1	A	742	GLU	CA-C	7.67	1.56	1.52
1	A	801	ILE	CA-C	5.53	1.58	1.52

All (24) bond angle outliers are listed below:

Mol	Chain	Res	Type	Atoms	Z	Observed(°)	Ideal(°)
1	A	202	PHE	CA-CB-CG	6.73	120.53	113.80
1	A	425	GLU	CA-C-N	6.67	129.62	120.35
1	A	425	GLU	C-N-CA	6.67	129.62	120.35
1	A	184	PHE	CA-CB-CG	6.25	120.05	113.80
1	A	550	PHE	CA-CB-CG	5.88	119.68	113.80
1	A	742	GLU	CB-CG-CD	5.65	122.21	112.60
1	A	512	LYS	CA-C-N	5.65	127.85	120.28
1	A	512	LYS	C-N-CA	5.65	127.85	120.28
1	A	690	ALA	CA-C-N	5.52	127.61	120.44
1	A	690	ALA	C-N-CA	5.52	127.61	120.44
1	A	260	PHE	CA-C-N	5.39	128.32	120.51
1	A	260	PHE	C-N-CA	5.39	128.32	120.51
1	A	268	ASP	CA-CB-CG	5.39	117.99	112.60
1	A	547	GLY	CA-C-N	5.32	128.18	120.79
1	A	547	GLY	C-N-CA	5.32	128.18	120.79
1	A	530	ASN	CA-CB-CG	5.29	117.89	112.60
1	A	140	GLU	CA-C-N	5.10	127.07	120.44
1	A	140	GLU	C-N-CA	5.10	127.07	120.44
1	A	422	PRO	CA-C-N	5.08	130.30	122.93

Continued on next page...

Continued from previous page...

Mol	Chain	Res	Type	Atoms	Z	Observed(°)	Ideal(°)
1	A	422	PRO	C-N-CA	5.08	130.30	122.93
1	A	782	SER	CA-C-N	5.07	126.91	120.72
1	A	782	SER	C-N-CA	5.07	126.91	120.72
1	A	61	THR	N-CA-C	-5.05	101.61	109.24
1	A	804	SER	N-CA-C	-5.05	106.38	112.54

There are no chirality outliers.

There are no planarity outliers.

5.2 Too-close contacts [i](#)

In the following table, the Non-H and H(model) columns list the number of non-hydrogen atoms and hydrogen atoms in the chain respectively. The H(added) column lists the number of hydrogen atoms added and optimized by MolProbity. The Clashes column lists the number of clashes within the asymmetric unit, whereas Symm-Clashes lists symmetry-related clashes.

Mol	Chain	Non-H	H(model)	H(added)	Clashes	Symm-Clashes
1	A	5866	0	5729	58	0
2	A	2	0	0	0	0
3	A	1	0	0	0	0
4	A	5	0	0	0	0
5	A	25	0	0	0	0
6	A	162	0	0	5	0
All	All	6061	0	5729	58	0

The all-atom clashscore is defined as the number of clashes found per 1000 atoms (including hydrogen atoms). The all-atom clashscore for this structure is 5.

All (58) close contacts within the same asymmetric unit are listed below, sorted by their clash magnitude.

Atom-1	Atom-2	Interatomic distance (Å)	Clash overlap (Å)
1:A:420:GLY:HA2	1:A:801:ILE:HG23	1.82	0.60
1:A:111:ARG:O	1:A:166:GLY:HA3	2.03	0.59
1:A:504:SER:HB3	1:A:577:LYS:HE3	1.84	0.58
1:A:610:ASP:HA	1:A:701:SER:HB2	1.87	0.57
1:A:212:ALA:O	1:A:216:GLN:HG3	2.05	0.57
1:A:669:ASN:O	1:A:778:SER:HB2	2.06	0.56
1:A:463:HIS:HE1	1:A:583:PHE:CE1	2.24	0.55
1:A:238:GLN:HE22	1:A:266:GLU:HB2	1.72	0.54
1:A:463:HIS:HB3	6:A:2119:HOH:O	2.07	0.54

Continued on next page...

Continued from previous page...

Atom-1	Atom-2	Interatomic distance (Å)	Clash overlap (Å)
1:A:803:GLU:HA	1:A:803:GLU:OE1	2.08	0.53
1:A:519:PRO:HB3	6:A:2117:HOH:O	2.08	0.53
1:A:636:ARG:HG2	1:A:638:GLU:HG2	1.90	0.53
1:A:419:GLU:HG2	1:A:784:ASN:CG	2.34	0.52
1:A:497:GLU:O	1:A:500:ALA:HB3	2.10	0.52
1:A:405:ILE:HG22	1:A:801:ILE:HD12	1.92	0.52
1:A:614:HIS:HB2	6:A:2141:HOH:O	2.10	0.52
1:A:429:LEU:CD1	1:A:793:PHE:HB3	2.39	0.52
1:A:298:THR:HG21	1:A:393:PRO:HG3	1.92	0.51
1:A:222:GLN:HB2	1:A:314:GLN:HE22	1.75	0.51
1:A:507:HIS:HB2	1:A:578:ASP:HA	1.94	0.50
1:A:711:PRO:HG2	1:A:712:LEU:HD12	1.92	0.50
1:A:631:TYR:CE2	1:A:633:SER:HB2	2.47	0.49
1:A:704:PHE:HB2	1:A:750:ILE:HG22	1.94	0.49
1:A:319:ALA:HB1	1:A:360:GLU:HG3	1.94	0.49
1:A:115:GLU:O	1:A:119:LEU:HG	2.14	0.47
1:A:501:LEU:HD22	1:A:594:ARG:HB3	1.97	0.47
1:A:233:HIS:CD2	1:A:253:HIS:CE1	3.03	0.47
1:A:429:LEU:HD12	1:A:793:PHE:HB3	1.98	0.46
1:A:549:CYS:SG	1:A:740:ILE:HG12	2.56	0.46
1:A:583:PHE:HB3	6:A:2115:HOH:O	2.13	0.46
1:A:676:PRO:HG3	1:A:772:LEU:HA	1.98	0.46
1:A:221:VAL:HG13	1:A:314:GLN:HB2	1.97	0.46
1:A:406:SER:HB2	1:A:801:ILE:HG13	1.97	0.46
1:A:256:GLU:HA	1:A:287:ASN:HA	1.98	0.45
1:A:613:VAL:HG11	1:A:713:GLY:HA2	1.97	0.45
1:A:705:ASP:HB3	1:A:744:GLY:H	1.82	0.44
1:A:636:ARG:HD3	1:A:642:PHE:CE1	2.52	0.44
1:A:419:GLU:HG2	1:A:784:ASN:OD1	2.17	0.44
1:A:723:ALA:HB2	1:A:756:MET:HB3	1.99	0.44
1:A:176:MET:HE2	1:A:221:VAL:HG22	2.00	0.43
1:A:562:ARG:HD3	6:A:2106:HOH:O	2.19	0.43
1:A:677:GLU:HG3	1:A:775:LEU:HB2	2.00	0.43
1:A:688:PRO:HB3	1:A:796:SER:HB2	2.01	0.43
1:A:705:ASP:O	1:A:713:GLY:HA3	2.17	0.43
1:A:231:VAL:HG11	1:A:331:GLY:HA2	2.01	0.43
1:A:228:ASP:HA	1:A:319:ALA:HB3	2.00	0.43
1:A:349:GLY:HA2	1:A:766:PRO:HG2	2.00	0.42
1:A:70:ALA:HA	1:A:73:ARG:HG3	2.01	0.42
1:A:383:PRO:HD3	1:A:442:PRO:HB3	2.02	0.42
1:A:534:ILE:HG22	1:A:535:SER:N	2.34	0.42

Continued on next page...

Continued from previous page...

Atom-1	Atom-2	Interatomic distance (Å)	Clash overlap (Å)
1:A:613:VAL:HG12	1:A:705:ASP:OD2	2.19	0.42
1:A:496:GLU:HA	1:A:499:LEU:HD12	2.02	0.41
1:A:342:ILE:HG23	1:A:731:SER:HB2	2.03	0.41
1:A:739:ILE:HD12	1:A:761:LEU:HD11	2.03	0.41
1:A:422:PRO:HA	1:A:800:ASN:OD1	2.21	0.41
1:A:534:ILE:HG22	1:A:535:SER:H	1.86	0.41
1:A:463:HIS:CE1	1:A:583:PHE:CE1	3.09	0.40
1:A:802:PRO:HB2	1:A:803:GLU:H	1.73	0.40

There are no symmetry-related clashes.

5.3 Torsion angles [i](#)

5.3.1 Protein backbone [i](#)

In the following table, the Percentiles column shows the percent Ramachandran outliers of the chain as a percentile score with respect to all X-ray entries followed by that with respect to entries of similar resolution.

The Analysed column shows the number of residues for which the backbone conformation was analysed, and the total number of residues.

Mol	Chain	Analysed	Favoured	Allowed	Outliers	Percentiles	
1	A	755/794 (95%)	691 (92%)	60 (8%)	4 (0%)	24	51

All (4) Ramachandran outliers are listed below:

Mol	Chain	Res	Type
1	A	798	ARG
1	A	802	PRO
1	A	192	HIS
1	A	808	SER

5.3.2 Protein sidechains [i](#)

In the following table, the Percentiles column shows the percent sidechain outliers of the chain as a percentile score with respect to all X-ray entries followed by that with respect to entries of similar resolution.

The Analysed column shows the number of residues for which the sidechain conformation was analysed, and the total number of residues.

Mol	Chain	Analysed	Rotameric	Outliers	Percentiles	
1	A	641/672 (95%)	601 (94%)	40 (6%)	16	43

All (40) residues with a non-rotameric sidechain are listed below:

Mol	Chain	Res	Type
1	A	58	SER
1	A	68	VAL
1	A	77	LEU
1	A	98	THR
1	A	121	VAL
1	A	135	ASN
1	A	151	VAL
1	A	159	SER
1	A	231	VAL
1	A	252	VAL
1	A	256	GLU
1	A	269	SER
1	A	281	ASN
1	A	323	ASP
1	A	350	VAL
1	A	378	SER
1	A	406	SER
1	A	419	GLU
1	A	433	VAL
1	A	441	SER
1	A	475	SER
1	A	518	LYS
1	A	524	ARG
1	A	535	SER
1	A	543	LEU
1	A	598	SER
1	A	601	ARG
1	A	603	SER
1	A	604	LEU
1	A	619	THR
1	A	633	SER
1	A	653	LYS
1	A	656	LEU
1	A	663	ASN
1	A	716	GLN
1	A	770	ASP
1	A	775	LEU
1	A	777	THR

Continued on next page...

Continued from previous page...

Mol	Chain	Res	Type
1	A	780	THR
1	A	809	LEU

Sometimes sidechains can be flipped to improve hydrogen bonding and reduce clashes. All (8) such sidechains are listed below:

Mol	Chain	Res	Type
1	A	232	HIS
1	A	253	HIS
1	A	416	GLN
1	A	463	HIS
1	A	516	HIS
1	A	530	ASN
1	A	536	ASN
1	A	573	HIS

5.3.3 RNA [i](#)

There are no RNA molecules in this entry.

5.4 Non-standard residues in protein, DNA, RNA chains [i](#)

There are no non-standard protein/DNA/RNA residues in this entry.

5.5 Carbohydrates [i](#)

There are no oligosaccharides in this entry.

5.6 Ligand geometry [i](#)

Of 9 ligands modelled in this entry, 8 are monoatomic - leaving 1 for Mogul analysis.

In the following table, the Counts columns list the number of bonds (or angles) for which Mogul statistics could be retrieved, the number of bonds (or angles) that are observed in the model and the number of bonds (or angles) that are defined in the Chemical Component Dictionary. The Link column lists molecule types, if any, to which the group is linked. The Z score for a bond length (or angle) is the number of standard deviations the observed value is removed from the expected value. A bond length (or angle) with $|Z| > 2$ is considered an outlier worth inspection. RMSZ is the root-mean-square of all Z scores of the bond lengths (or angles).

Mol	Type	Chain	Res	Link	Bond lengths			Bond angles		
					Counts	RMSZ	# Z > 2	Counts	RMSZ	# Z > 2
5	N4R	A	1817	3	26,26,26	0.36	0	33,33,33	0.59	0

In the following table, the Chirals column lists the number of chiral outliers, the number of chiral centers analysed, the number of these observed in the model and the number defined in the Chemical Component Dictionary. Similar counts are reported in the Torsion and Rings columns. '-' means no outliers of that kind were identified.

Mol	Type	Chain	Res	Link	Chirals	Torsions	Rings
5	N4R	A	1817	3	-	0/22/22/22	0/2/2/2

There are no bond length outliers.

There are no bond angle outliers.

There are no chirality outliers.

There are no torsion outliers.

There are no ring outliers.

No monomer is involved in short contacts.

5.7 Other polymers ⓘ

There are no such residues in this entry.

5.8 Polymer linkage issues ⓘ

There are no chain breaks in this entry.

6 Fit of model and data [i](#)

6.1 Protein, DNA and RNA chains [i](#)

In the following table, the column labelled ‘#RSRZ > 2’ contains the number (and percentage) of RSRZ outliers, followed by percent RSRZ outliers for the chain as percentile scores relative to all X-ray entries and entries of similar resolution. The OWAB column contains the minimum, median, 95th percentile and maximum values of the occupancy-weighted average B-factor per residue. The column labelled ‘Q < 0.9’ lists the number of (and percentage) of residues with an average occupancy less than 0.9.

Mol	Chain	Analysed	<RSRZ>	#RSRZ>2	OWAB(Å ²)	Q<0.9
1	A	756/794 (95%)	0.07	16 (2%) 63 55	51, 88, 118, 152	1 (0%)

All (16) RSRZ outliers are listed below:

Mol	Chain	Res	Type	RSRZ
1	A	54	VAL	8.7
1	A	809	LEU	6.5
1	A	458	MET	4.5
1	A	807	LEU	3.6
1	A	805	LEU	3.5
1	A	462	HIS	2.7
1	A	671	GLY	2.7
1	A	510	ILE	2.6
1	A	804	SER	2.7
1	A	56	GLY	2.5
1	A	803	GLU	2.4
1	A	55	GLN	2.3
1	A	806	ARG	2.3
1	A	580	ALA	2.2
1	A	463	HIS	2.2
1	A	672	LYS	2.0

6.2 Non-standard residues in protein, DNA, RNA chains [i](#)

There are no non-standard protein/DNA/RNA residues in this entry.

6.3 Carbohydrates [i](#)

There are no oligosaccharides in this entry.

6.4 Ligands [i](#)

In the following table, the Atoms column lists the number of modelled atoms in the group and the number defined in the chemical component dictionary. The B-factors column lists the minimum, median, 95th percentile and maximum values of B factors of atoms in the group. The column labelled 'Q< 0.9' lists the number of atoms with occupancy less than 0.9.

Mol	Type	Chain	Res	Atoms	RSCC	RSR	B-factors(\AA^2)	Q<0.9
5	N4R	A	1817	25/25	0.84	0.22	112,130,135,135	0
4	K	A	1813	1/1	0.85	0.15	132,132,132,132	0
4	K	A	1815	1/1	0.90	0.13	137,137,137,137	0
2	CL	A	1809	1/1	0.90	0.28	110,110,110,110	0
2	CL	A	1810	1/1	0.91	0.12	113,113,113,113	0
4	K	A	1814	1/1	0.94	0.12	113,113,113,113	0
4	K	A	1812	1/1	0.97	0.06	88,88,88,88	0
4	K	A	1816	1/1	0.98	0.05	97,97,97,97	0
3	ZN	A	1811	1/1	0.99	0.03	123,123,123,123	0

6.5 Other polymers [i](#)

There are no such residues in this entry.