



Full wwPDB X-ray Structure Validation Report ⓘ

Mar 9, 2026 – 12:02 AM UTC

PDB ID : 5KKL / pdb_00005kkl
Title : Structure of ctPRC2 in complex with H3K27me3 and H3K27M
Authors : Jiao, L.; Liu, X.
Deposited on : 2016-06-21
Resolution : 2.94 Å(reported)

This is a Full wwPDB X-ray Structure Validation Report for a publicly released PDB entry.

We welcome your comments at validation@mail.wwpdb.org

A user guide is available at

<https://www.wwpdb.org/validation/2017/XrayValidationReportHelp>

with specific help available everywhere you see the ⓘ symbol.

The types of validation reports are described at

<http://www.wwpdb.org/validation/2017/FAQs#types>.

The following versions of software and data (see [references ⓘ](#)) were used in the production of this report:

MolProbity : 4-5-2 with Phenix2.0
Mogul : 2022.3.0, CSD as543be (2022)
Xtriage (Phenix) : 2.0
EDS : 3.0
Buster-report : wwPDB partial adaption of 1.1.7 (2018)
Percentile statistics : 20250101.v01 (using entries in the PDB archive January 1st 2025)
CCP4 : 9.0.010 (Gargrove)
Density-Fitness : 1.0.12
Ideal geometry (proteins) : Engh & Huber (2001)
Ideal geometry (DNA, RNA) : Parkinson et al. (1996)
Validation Pipeline (wwPDB-VP) : 2.49

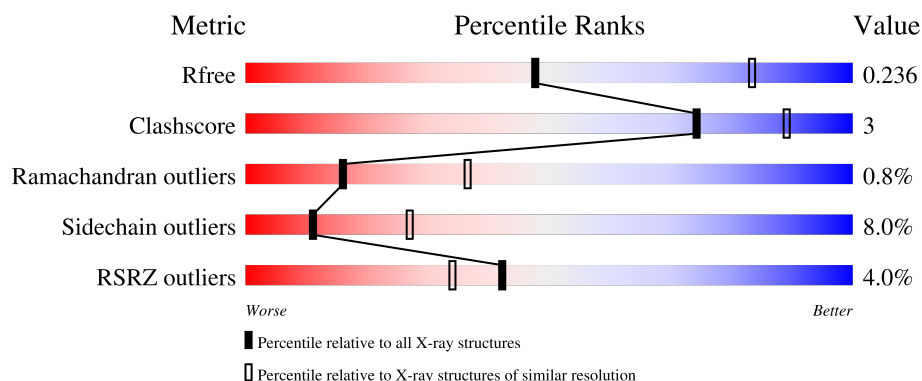
1 Overall quality at a glance

The following experimental techniques were used to determine the structure:

X-RAY DIFFRACTION

The reported resolution of this entry is 2.94 Å.

Percentile scores (ranging between 0-100) for global validation metrics of the entry are shown in the following graphic. The table shows the number of entries on which the scores are based.



Metric	Whole archive (#Entries)	Similar resolution (#Entries, resolution range(Å))
R_{free}	180053	1159 (2.96-2.92)
Clashscore	190562	1184 (2.96-2.92)
Ramachandran outliers	187476	1131 (2.96-2.92)
Sidechain outliers	187428	1131 (2.96-2.92)
RSRZ outliers	180081	1159 (2.96-2.92)

The table below summarises the geometric issues observed across the polymeric chains and their fit to the electron density. The red, orange, yellow and green segments of the lower bar indicate the fraction of residues that contain outliers for ≥ 3 , 2, 1 and 0 types of geometric quality criteria respectively. A grey segment represents the fraction of residues that are not modelled. The numeric value for each fraction is indicated below the corresponding segment, with a dot representing fractions $\leq 5\%$. The upper red bar (where present) indicates the fraction of residues that have poor fit to the electron density. The numeric value is given above the bar.

Mol	Chain	Length	Quality of chain
1	A	605	<div> <div>2%</div> <div>67% 12% 20%</div> </div>
2	B	938	<div> <div>4%</div> <div>74% 14% 11%</div> </div>
3	D	11	<div> <div>18%</div> <div>64% 9% 27%</div> </div>

2 Entry composition

There are 5 unique types of molecules in this entry. The entry contains 10614 atoms, of which 0 are hydrogens and 0 are deuteriums.

In the tables below, the ZeroOcc column contains the number of atoms modelled with zero occupancy, the AltConf column contains the number of residues with at least one atom in alternate conformation and the Trace column contains the number of residues modelled with at most 2 atoms.

- Molecule 1 is a protein called putative polycomb protein Eed.

Mol	Chain	Residues	Atoms					ZeroOcc	AltConf	Trace
1	A	481	Total	C	N	O	S	0	0	0
			3785	2419	646	700	20			

There are 40 discrepancies between the modelled and reference sequences:

Chain	Residue	Modelled	Actual	Comment	Reference
A	-39	MET	-	expression tag	UNP G0S8H7
A	-38	ALA	-	expression tag	UNP G0S8H7
A	-37	SER	-	expression tag	UNP G0S8H7
A	-36	ALA	-	expression tag	UNP G0S8H7
A	-35	TRP	-	expression tag	UNP G0S8H7
A	-34	SER	-	expression tag	UNP G0S8H7
A	-33	HIS	-	expression tag	UNP G0S8H7
A	-32	PRO	-	expression tag	UNP G0S8H7
A	-31	GLN	-	expression tag	UNP G0S8H7
A	-30	PHE	-	expression tag	UNP G0S8H7
A	-29	GLU	-	expression tag	UNP G0S8H7
A	-28	LYS	-	expression tag	UNP G0S8H7
A	-27	GLY	-	expression tag	UNP G0S8H7
A	-26	GLY	-	expression tag	UNP G0S8H7
A	-25	GLY	-	expression tag	UNP G0S8H7
A	-24	SER	-	expression tag	UNP G0S8H7
A	-23	GLY	-	expression tag	UNP G0S8H7
A	-22	GLY	-	expression tag	UNP G0S8H7
A	-21	GLY	-	expression tag	UNP G0S8H7
A	-20	SER	-	expression tag	UNP G0S8H7
A	-19	GLY	-	expression tag	UNP G0S8H7
A	-18	GLY	-	expression tag	UNP G0S8H7
A	-17	SER	-	expression tag	UNP G0S8H7
A	-16	ALA	-	expression tag	UNP G0S8H7
A	-15	TRP	-	expression tag	UNP G0S8H7
A	-14	SER	-	expression tag	UNP G0S8H7
A	-13	HIS	-	expression tag	UNP G0S8H7

Continued on next page...

Continued from previous page...

Chain	Residue	Modelled	Actual	Comment	Reference
A	-12	PRO	-	expression tag	UNP G0S8H7
A	-11	GLN	-	expression tag	UNP G0S8H7
A	-10	PHE	-	expression tag	UNP G0S8H7
A	-9	GLU	-	expression tag	UNP G0S8H7
A	-8	LYS	-	expression tag	UNP G0S8H7
A	-7	LEU	-	expression tag	UNP G0S8H7
A	-6	GLU	-	expression tag	UNP G0S8H7
A	-5	VAL	-	expression tag	UNP G0S8H7
A	-4	LEU	-	expression tag	UNP G0S8H7
A	-3	PHE	-	expression tag	UNP G0S8H7
A	-2	GLN	-	expression tag	UNP G0S8H7
A	-1	GLY	-	expression tag	UNP G0S8H7
A	0	PRO	-	expression tag	UNP G0S8H7

- Molecule 2 is a protein called Putative uncharacterized protein,Histone H3.1 peptide,Zinc finger domain-containing protein.

Mol	Chain	Residues	Atoms					ZeroOcc	AltConf	Trace
2	B	839	Total	C	N	O	S	0	0	0
			6738	4241	1219	1235	43			

There are 18 discrepancies between the modelled and reference sequences:

Chain	Residue	Modelled	Actual	Comment	Reference
B	182	SER	-	expression tag	UNP G0SDW4
B	183	ASN	-	expression tag	UNP G0SDW4
B	184	HIS	-	expression tag	UNP G0SDW4
B	185	HIS	-	expression tag	UNP G0SDW4
B	186	HIS	-	expression tag	UNP G0SDW4
B	187	HIS	-	expression tag	UNP G0SDW4
B	188	HIS	-	expression tag	UNP G0SDW4
B	189	HIS	-	expression tag	UNP G0SDW4
B	190	ALA	-	expression tag	UNP G0SDW4
B	2014	LEU	-	linker	UNP G0SDW4
B	2015	VAL	-	linker	UNP G0SDW4
B	2016	PRO	-	linker	UNP G0SDW4
B	2017	ALA	-	linker	UNP G0SDW4
B	2018	GLY	-	linker	UNP G0SDW4
B	2019	SER	-	linker	UNP G0SDW4
B	2020	GLU	-	linker	UNP G0SDW4
B	2021	VAL	-	linker	UNP G0SDW4
B	2027	MET	LYS	engineered mutation	UNP P68431

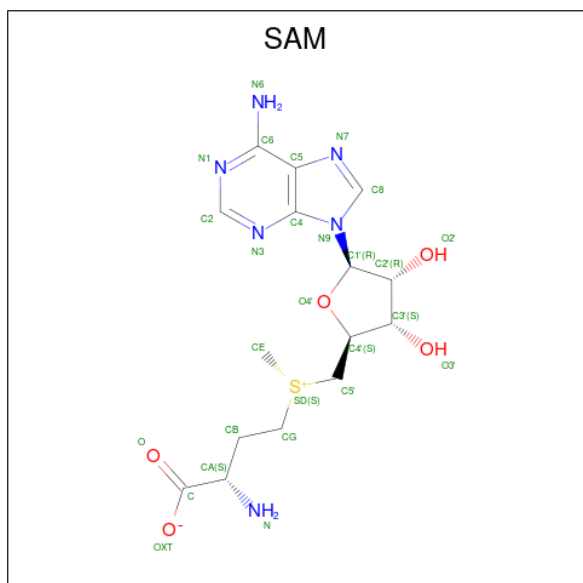
- Molecule 3 is a protein called ALA-ALA-ARG-M3L-SER-ALA-PRO-ALA.

Mol	Chain	Residues	Atoms				ZeroOcc	AltConf	Trace
3	D	8	Total	C	N	O	0	0	0
			56	35	12	9			

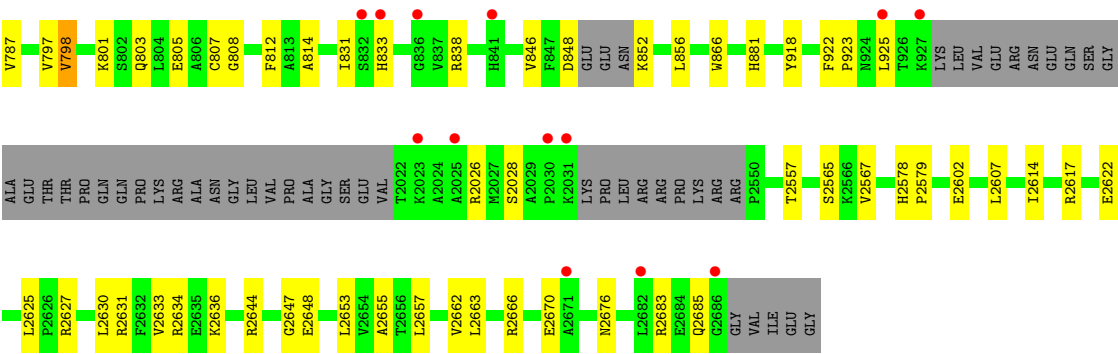
- Molecule 4 is ZINC ION (CCD ID: ZN) (formula: Zn).

Mol	Chain	Residues	Atoms		ZeroOcc	AltConf
4	B	8	Total	Zn	0	0
			8	8		

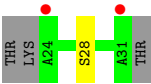
- Molecule 5 is S-ADENOSYLMETHIONINE (CCD ID: SAM) (formula: C₁₅H₂₂N₆O₅S).



Mol	Chain	Residues	Atoms					ZeroOcc	AltConf
5	B	1	Total	C	N	O	S	0	0
			27	15	6	5	1		



● Molecule 3: ALA-ALA-ARG-M3L-SER-ALA-PRO-ALA



4 Data and refinement statistics

Property	Value	Source
Space group	P 1 21 1	Depositor
Cell constants a, b, c, α , β , γ	86.25Å 80.56Å 133.22Å 90.00° 107.42° 90.00°	Depositor
Resolution (Å)	48.74 – 2.94 48.74 – 2.94	Depositor EDS
% Data completeness (in resolution range)	83.0 (48.74-2.94) 83.2 (48.74-2.94)	Depositor EDS
R_{merge}	0.08	Depositor
R_{sym}	(Not available)	Depositor
$\langle I/\sigma(I) \rangle$ ¹	2.84 (at 2.96Å)	Xtriage
Refinement program	BUSTER 2.10.2	Depositor
R, R_{free}	0.186 , 0.234 0.193 , 0.236	Depositor DCC
R_{free} test set	1517 reflections (4.89%)	wwPDB-VP
Wilson B-factor (Å ²)	53.2	Xtriage
Anisotropy	0.136	Xtriage
Bulk solvent k_{sol} (e/Å ³), B_{sol} (Å ²)	0.31 , 74.5	EDS
L-test for twinning ²	$\langle L \rangle = 0.49$, $\langle L^2 \rangle = 0.33$	Xtriage
Estimated twinning fraction	0.017 for h,-k,-h-l	Xtriage
F_o, F_c correlation	0.92	EDS
Total number of atoms	10614	wwPDB-VP
Average B, all atoms (Å ²)	78.0	wwPDB-VP

Xtriage's analysis on translational NCS is as follows: *The largest off-origin peak in the Patterson function is 3.37% of the height of the origin peak. No significant pseudotranslation is detected.*

¹Intensities estimated from amplitudes.

²Theoretical values of $\langle |L| \rangle$, $\langle L^2 \rangle$ for acentric reflections are 0.5, 0.333 respectively for untwinned datasets, and 0.375, 0.2 for perfectly twinned datasets.

5 Model quality

5.1 Standard geometry

Bond lengths and bond angles in the following residue types are not validated in this section: M3L, ZN, SAM

The Z score for a bond length (or angle) is the number of standard deviations the observed value is removed from the expected value. A bond length (or angle) with $|Z| > 5$ is considered an outlier worth inspection. RMSZ is the root-mean-square of all Z scores of the bond lengths (or angles).

Mol	Chain	Bond lengths		Bond angles	
		RMSZ	$\# Z > 5$	RMSZ	$\# Z > 5$
1	A	0.80	0/3897	1.21	9/5310 (0.2%)
2	B	0.78	0/6892	1.34	22/9313 (0.2%)
3	D	0.97	0/44	1.19	0/59
All	All	0.79	0/10833	1.29	31/14682 (0.2%)

There are no bond length outliers.

All (31) bond angle outliers are listed below:

Mol	Chain	Res	Type	Atoms	Z	Observed(°)	Ideal(°)
1	A	483	ASP	CA-CB-CG	7.44	120.04	112.60
2	B	429	GLY	CA-C-N	7.20	134.66	121.70
2	B	429	GLY	C-N-CA	7.20	134.66	121.70
2	B	364	LYS	CA-C-N	7.02	130.08	120.46
2	B	364	LYS	C-N-CA	7.02	130.08	120.46
2	B	426	ASP	N-CA-C	-6.69	105.27	113.50
1	A	323	CYS	N-CA-C	-5.72	106.22	113.43
2	B	552	GLN	CA-C-N	5.66	128.43	120.28
2	B	552	GLN	C-N-CA	5.66	128.43	120.28
2	B	242	ASP	CA-CB-CG	5.50	118.10	112.60
2	B	2622	GLU	CA-C-N	5.43	128.09	120.28
2	B	2622	GLU	C-N-CA	5.43	128.09	120.28
1	A	184	GLU	CA-C-N	5.34	126.02	120.03
1	A	184	GLU	C-N-CA	5.34	126.02	120.03
1	A	124	ASN	CA-C-N	5.32	127.47	120.60
1	A	124	ASN	C-N-CA	5.32	127.47	120.60
2	B	728	ALA	CA-C-N	5.29	128.62	121.05
2	B	728	ALA	C-N-CA	5.29	128.62	121.05
1	A	116	ASN	CA-CB-CG	5.24	117.84	112.60
2	B	2676	ASN	CA-CB-CG	5.18	117.78	112.60
2	B	764	GLY	CA-C-N	5.17	127.94	120.38

Continued on next page...

Continued from previous page...

Mol	Chain	Res	Type	Atoms	Z	Observed(°)	Ideal(°)
2	B	764	GLY	C-N-CA	5.17	127.94	120.38
1	A	492	ARG	CA-C-N	5.12	127.14	120.28
1	A	492	ARG	C-N-CA	5.12	127.14	120.28
2	B	763	CYS	CA-C-N	5.10	130.88	121.70
2	B	763	CYS	C-N-CA	5.10	130.88	121.70
2	B	2647	GLY	CA-C-N	5.07	127.04	120.44
2	B	2647	GLY	C-N-CA	5.07	127.04	120.44
2	B	787	VAL	CA-C-N	5.06	127.38	120.54
2	B	787	VAL	C-N-CA	5.06	127.38	120.54
2	B	572	ASN	CA-CB-CG	5.01	117.61	112.60

There are no chirality outliers.

There are no planarity outliers.

5.2 Too-close contacts ⓘ

In the following table, the Non-H and H(model) columns list the number of non-hydrogen atoms and hydrogen atoms in the chain respectively. The H(added) column lists the number of hydrogen atoms added and optimized by MolProbity. The Clashes column lists the number of clashes within the asymmetric unit, whereas Symm-Clashes lists symmetry-related clashes.

Mol	Chain	Non-H	H(model)	H(added)	Clashes	Symm-Clashes
1	A	3785	0	3636	28	1
2	B	6738	0	6629	40	2
3	D	56	0	63	0	0
4	B	8	0	0	0	0
5	B	27	0	22	0	0
All	All	10614	0	10350	64	2

The all-atom clashscore is defined as the number of clashes found per 1000 atoms (including hydrogen atoms). The all-atom clashscore for this structure is 3.

All (64) close contacts within the same asymmetric unit are listed below, sorted by their clash magnitude.

Atom-1	Atom-2	Interatomic distance (Å)	Clash overlap (Å)
2:B:881:HIS:HD2	2:B:918:TYR:H	1.26	0.81
2:B:881:HIS:CD2	2:B:918:TYR:H	2.07	0.71
2:B:831:ILE:HD11	2:B:856:LEU:HD21	1.75	0.68
2:B:604:THR:HG21	2:B:2655:ALA:HB1	1.81	0.63
2:B:763:CYS:H	2:B:764:GLY:HA2	1.63	0.62

Continued on next page...

Continued from previous page...

Atom-1	Atom-2	Interatomic distance (Å)	Clash overlap (Å)
2:B:582:ASP:HB3	2:B:585:GLN:HB2	1.83	0.59
2:B:318:ASN:HB3	2:B:838:ARG:HH12	1.67	0.58
1:A:391:SER:HB3	1:A:394:GLN:HB2	1.86	0.58
2:B:658:ARG:HD3	2:B:721:PRO:HA	1.84	0.57
1:A:219:PHE:HB3	1:A:224:MET:HE1	1.87	0.57
2:B:234:GLN:HE21	2:B:235:PRO:HD2	1.69	0.56
2:B:763:CYS:N	2:B:764:GLY:HA2	2.21	0.55
1:A:307:SER:HB2	2:B:467:LYS:HA	1.88	0.55
2:B:359:GLN:HE21	2:B:363:GLN:HE21	1.52	0.55
1:A:220:PRO:HB2	1:A:222:GLU:HG2	1.87	0.55
2:B:731:SER:HB3	2:B:735:THR:HB	1.90	0.54
2:B:301:PRO:HB3	2:B:808:GLY:HA2	1.88	0.53
1:A:237:SER:HB2	1:A:295:THR:HG23	1.90	0.53
1:A:165:ILE:HB	1:A:179:CYS:HB3	1.91	0.52
1:A:186:HIS:CG	1:A:190:LEU:HD21	2.45	0.52
2:B:2644:ARG:HH12	2:B:2648:GLU:HB2	1.75	0.51
1:A:194:ALA:HB3	1:A:203:LEU:HB2	1.91	0.51
1:A:203:LEU:HD13	1:A:248:VAL:HG22	1.93	0.51
2:B:738:GLN:HA	2:B:749:VAL:HG11	1.93	0.50
2:B:2630:LEU:HA	2:B:2633:VAL:HG12	1.94	0.49
1:A:217:PRO:HD3	1:A:230:ILE:HD11	1.94	0.49
2:B:250:LYS:HB3	2:B:289:PRO:HD2	1.95	0.48
2:B:798:VAL:HG22	2:B:814:ALA:HB2	1.94	0.48
1:A:319:HIS:HB2	1:A:510:LEU:HB3	1.96	0.46
1:A:210:VAL:HG22	1:A:238:SER:HB3	1.97	0.46
1:A:305:PRO:HG2	1:A:306:GLN:HE21	1.81	0.46
1:A:350:SER:HB3	1:A:519:ILE:HB	1.98	0.46
2:B:675:GLU:O	2:B:679:ARG:HG3	2.16	0.46
2:B:922:PHE:HB3	2:B:925:LEU:HD11	1.97	0.45
1:A:535:GLU:HG2	1:A:536:TRP:CD1	2.51	0.45
2:B:573:GLU:HG3	2:B:626:TRP:HD1	1.81	0.45
1:A:85:GLN:HA	2:B:250:LYS:HE2	1.99	0.45
1:A:386:GLN:HE22	1:A:407:MET:HB3	1.81	0.45
1:A:414:PRO:HA	1:A:494:THR:HG23	1.98	0.45
1:A:291:MET:C	1:A:293:LYS:H	2.25	0.45
2:B:831:ILE:HD11	2:B:856:LEU:CD2	2.46	0.44
2:B:803:GLN:HE21	2:B:812:PHE:HE2	1.66	0.44
1:A:506:ASN:HA	1:A:507:PRO:HD2	1.85	0.44
1:A:220:PRO:HD2	1:A:224:MET:HE2	2.01	0.43
1:A:90:ASP:O	2:B:295:PRO:HD3	2.17	0.43
2:B:2578:HIS:HA	2:B:2579:PRO:HD3	1.91	0.43

Continued on next page...

Continued from previous page...

Atom-1	Atom-2	Interatomic distance (Å)	Clash overlap (Å)
2:B:478:ALA:HB1	2:B:506:LEU:HD21	2.00	0.43
2:B:514:HIS:CG	2:B:2607:LEU:HD22	2.54	0.42
2:B:594:GLU:HG2	2:B:621:LEU:HD22	2.01	0.42
1:A:114:ALA:HB1	1:A:141:ILE:HB	2.01	0.42
1:A:143:ASP:HB3	1:A:193:VAL:HG12	2.02	0.42
2:B:2565:SER:OG	2:B:2567:VAL:HG12	2.20	0.42
1:A:248:VAL:HG23	1:A:257:SER:HB3	2.01	0.41
1:A:383:VAL:CG1	1:A:408:LYS:HB2	2.49	0.41
1:A:329:MET:HG2	1:A:525:GLY:O	2.21	0.41
2:B:208:VAL:O	2:B:211:GLU:HG2	2.20	0.41
2:B:2657:LEU:HB3	2:B:2663:LEU:HB2	2.02	0.41
2:B:675:GLU:HB3	2:B:678:VAL:HG22	2.02	0.41
2:B:573:GLU:HG3	2:B:626:TRP:CD1	2.55	0.41
2:B:2627:ARG:HG2	2:B:2631:ARG:HD2	2.03	0.41
1:A:357:LEU:HD23	2:B:225:LEU:HD22	2.03	0.41
2:B:590:TRP:HZ2	2:B:627:ASP:HB3	1.86	0.40
2:B:866:TRP:CZ2	2:B:2026:ARG:HD3	2.56	0.40
2:B:629:HIS:HD2	2:B:633:GLN:HE22	1.69	0.40

All (2) symmetry-related close contacts are listed below. The label for Atom-2 includes the symmetry operator and encoded unit-cell translations to be applied.

Atom-1	Atom-2	Interatomic distance (Å)	Clash overlap (Å)
2:B:732:SER:OG	2:B:805:GLU:OE2[2_9510]	1.85	0.35
1:A:391:SER:OG	2:B:592:GLU:OE1[2_949]	2.10	0.10

5.3 Torsion angles [i](#)

5.3.1 Protein backbone [i](#)

In the following table, the Percentiles column shows the percent Ramachandran outliers of the chain as a percentile score with respect to all X-ray entries followed by that with respect to entries of similar resolution.

The Analysed column shows the number of residues for which the backbone conformation was analysed, and the total number of residues.

Mol	Chain	Analysed	Favoured	Allowed	Outliers	Percentiles
1	A	473/605 (78%)	454 (96%)	15 (3%)	4 (1%)	16 36

Continued on next page...

Continued from previous page...

Mol	Chain	Analysed	Favoured	Allowed	Outliers	Percentiles	
2	B	821/938 (88%)	762 (93%)	53 (6%)	6 (1%)	18	40
3	D	5/11 (46%)	5 (100%)	0	0	100	100
All	All	1299/1554 (84%)	1221 (94%)	68 (5%)	10 (1%)	16	36

All (10) Ramachandran outliers are listed below:

Mol	Chain	Res	Type
2	B	574	CYS
2	B	923	PRO
2	B	501	GLY
2	B	281	ASN
1	A	328	PHE
1	A	482	PRO
1	A	96	CYS
1	A	414	PRO
2	B	573	GLU
2	B	457	VAL

5.3.2 Protein sidechains ⓘ

In the following table, the Percentiles column shows the percent sidechain outliers of the chain as a percentile score with respect to all X-ray entries followed by that with respect to entries of similar resolution.

The Analysed column shows the number of residues for which the sidechain conformation was analysed, and the total number of residues.

Mol	Chain	Analysed	Rotameric	Outliers	Percentiles	
1	A	407/495 (82%)	384 (94%)	23 (6%)	18	41
2	B	733/815 (90%)	666 (91%)	67 (9%)	9	22
3	D	3/6 (50%)	2 (67%)	1 (33%)	0	0
All	All	1143/1316 (87%)	1052 (92%)	91 (8%)	11	27

All (91) residues with a non-rotameric sidechain are listed below:

Mol	Chain	Res	Type
1	A	25	LYS
1	A	27	LEU
1	A	76	LYS
1	A	90	ASP

Continued on next page...

Continued from previous page...

Mol	Chain	Res	Type
1	A	107	ASP
1	A	117	GLU
1	A	130	LEU
1	A	161	THR
1	A	175	GLN
1	A	187	SER
1	A	197	ASP
1	A	226	ILE
1	A	258	ARG
1	A	269	ARG
1	A	314	ARG
1	A	336	VAL
1	A	351	LYS
1	A	365	ARG
1	A	386	GLN
1	A	390	ILE
1	A	392	LEU
1	A	526	ARG
1	A	551	ARG
2	B	198	THR
2	B	275	GLU
2	B	278	LYS
2	B	294	LYS
2	B	311	ARG
2	B	321	LEU
2	B	328	ARG
2	B	333	ASN
2	B	336	GLU
2	B	346	ASP
2	B	351	ASP
2	B	362	SER
2	B	405	GLN
2	B	415	GLN
2	B	420	LEU
2	B	454	LEU
2	B	465	LEU
2	B	472	ILE
2	B	473	PHE
2	B	474	ASP
2	B	492	LEU
2	B	513	SER
2	B	515	ASP

Continued on next page...

Continued from previous page...

Mol	Chain	Res	Type
2	B	527	LYS
2	B	528	ARG
2	B	529	CYS
2	B	551	GLU
2	B	572	ASN
2	B	573	GLU
2	B	574	CYS
2	B	576	ARG
2	B	585	GLN
2	B	623	ARG
2	B	628	VAL
2	B	629	HIS
2	B	632	LEU
2	B	633	GLN
2	B	639	LEU
2	B	645	ARG
2	B	660	LYS
2	B	664	MET
2	B	688	ASP
2	B	716	THR
2	B	738	GLN
2	B	744	ARG
2	B	797	VAL
2	B	798	VAL
2	B	801	LYS
2	B	807	CYS
2	B	833	HIS
2	B	846	VAL
2	B	848	ASP
2	B	852	LYS
2	B	2028	SER
2	B	2557	THR
2	B	2602	GLU
2	B	2614	ILE
2	B	2617	ARG
2	B	2625	LEU
2	B	2634	ARG
2	B	2636	LYS
2	B	2653	LEU
2	B	2662	VAL
2	B	2666	ARG
2	B	2670	GLU

Continued on next page...

Continued from previous page...

Mol	Chain	Res	Type
2	B	2683	ARG
2	B	2685	GLN
3	D	28	SER

Sometimes sidechains can be flipped to improve hydrogen bonding and reduce clashes. All (26) such sidechains are listed below:

Mol	Chain	Res	Type
1	A	79	ASN
1	A	207	HIS
1	A	223	HIS
1	A	306	GLN
1	A	396	GLN
1	A	397	GLN
1	A	496	GLN
1	A	544	ASN
2	B	222	ASN
2	B	234	GLN
2	B	363	GLN
2	B	432	GLN
2	B	436	ASN
2	B	578	HIS
2	B	584	ASN
2	B	609	GLN
2	B	633	GLN
2	B	662	GLN
2	B	740	GLN
2	B	750	GLN
2	B	773	ASN
2	B	803	GLN
2	B	833	HIS
2	B	862	GLN
2	B	881	HIS
2	B	2577	GLN

5.3.3 RNA ⓘ

There are no RNA molecules in this entry.

5.4 Non-standard residues in protein, DNA, RNA chains [i](#)

1 non-standard protein/DNA/RNA residue is modelled in this entry.

In the following table, the Counts columns list the number of bonds (or angles) for which Mogul statistics could be retrieved, the number of bonds (or angles) that are observed in the model and the number of bonds (or angles) that are defined in the Chemical Component Dictionary. The Link column lists molecule types, if any, to which the group is linked. The Z score for a bond length (or angle) is the number of standard deviations the observed value is removed from the expected value. A bond length (or angle) with $|Z| > 2$ is considered an outlier worth inspection. RMSZ is the root-mean-square of all Z scores of the bond lengths (or angles).

Mol	Type	Chain	Res	Link	Bond lengths			Bond angles		
					Counts	RMSZ	$\# Z > 2$	Counts	RMSZ	$\# Z > 2$
3	M3L	D	27	3	10,11,12	0.54	0	9,14,16	0.45	0

In the following table, the Chirals column lists the number of chiral outliers, the number of chiral centers analysed, the number of these observed in the model and the number defined in the Chemical Component Dictionary. Similar counts are reported in the Torsion and Rings columns. '-' means no outliers of that kind were identified.

Mol	Type	Chain	Res	Link	Chirals	Torsions	Rings
3	M3L	D	27	3	-	0/9/10/12	-

There are no bond length outliers.

There are no bond angle outliers.

There are no chirality outliers.

There are no torsion outliers.

There are no ring outliers.

No monomer is involved in short contacts.

5.5 Carbohydrates [i](#)

There are no oligosaccharides in this entry.

5.6 Ligand geometry [i](#)

Of 9 ligands modelled in this entry, 8 are monoatomic - leaving 1 for Mogul analysis.

In the following table, the Counts columns list the number of bonds (or angles) for which Mogul statistics could be retrieved, the number of bonds (or angles) that are observed in the model and the number of bonds (or angles) that are defined in the Chemical Component Dictionary. The

Link column lists molecule types, if any, to which the group is linked. The Z score for a bond length (or angle) is the number of standard deviations the observed value is removed from the expected value. A bond length (or angle) with $|Z| > 2$ is considered an outlier worth inspection. RMSZ is the root-mean-square of all Z scores of the bond lengths (or angles).

Mol	Type	Chain	Res	Link	Bond lengths			Bond angles		
					Counts	RMSZ	# Z > 2	Counts	RMSZ	# Z > 2
5	SAM	B	8009	-	27,29,29	0.49	0	34,42,42	0.50	1 (2%)

In the following table, the Chirals column lists the number of chiral outliers, the number of chiral centers analysed, the number of these observed in the model and the number defined in the Chemical Component Dictionary. Similar counts are reported in the Torsion and Rings columns. '-' means no outliers of that kind were identified.

Mol	Type	Chain	Res	Link	Chirals	Torsions	Rings
5	SAM	B	8009	-	-	7/17/33/33	0/3/3/3

There are no bond length outliers.

All (1) bond angle outliers are listed below:

Mol	Chain	Res	Type	Atoms	Z	Observed(°)	Ideal(°)
5	B	8009	SAM	CG-SD-C5'	-2.39	97.60	103.43

There are no chirality outliers.

All (7) torsion outliers are listed below:

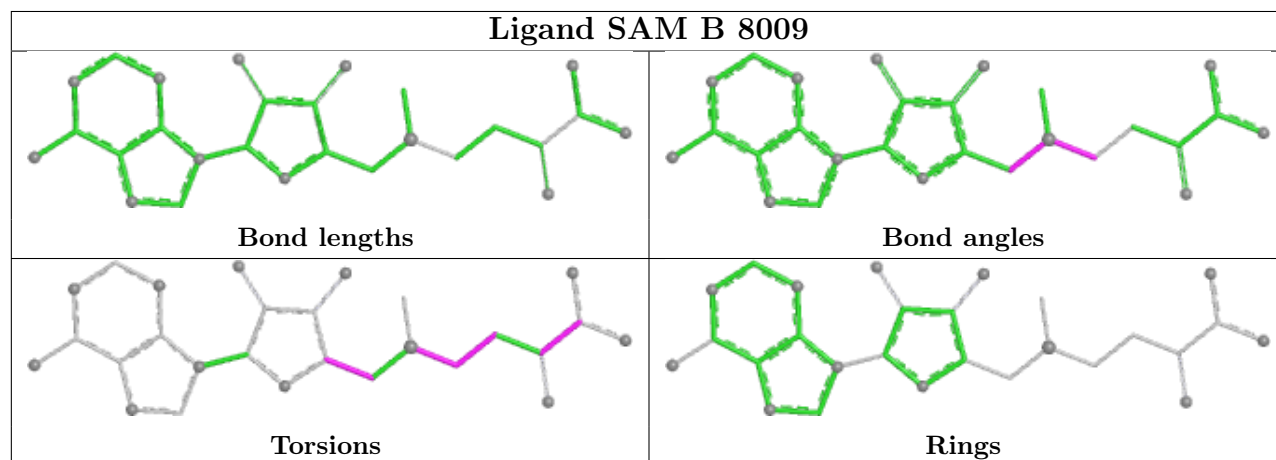
Mol	Chain	Res	Type	Atoms
5	B	8009	SAM	CB-CG-SD-CE
5	B	8009	SAM	CB-CG-SD-C5'
5	B	8009	SAM	OXT-C-CA-CB
5	B	8009	SAM	O4'-C4'-C5'-SD
5	B	8009	SAM	C3'-C4'-C5'-SD
5	B	8009	SAM	O-C-CA-CB
5	B	8009	SAM	CA-CB-CG-SD

There are no ring outliers.

No monomer is involved in short contacts.

The following is a two-dimensional graphical depiction of Mogul quality analysis of bond lengths, bond angles, torsion angles, and ring geometry for all instances of the Ligand of Interest. In addition, ligands with molecular weight > 250 and outliers as shown on the validation Tables will also be included. For torsion angles, if less than 5% of the Mogul distribution of torsion angles is within 10 degrees of the torsion angle in question, then that torsion angle is considered an outlier.

Any bond that is central to one or more torsion angles identified as an outlier by Mogul will be highlighted in the graph. For rings, the root-mean-square deviation (RMSD) between the ring in question and similar rings identified by Mogul is calculated over all ring torsion angles. If the average RMSD is greater than 60 degrees and the minimal RMSD between the ring in question and any Mogul-identified rings is also greater than 60 degrees, then that ring is considered an outlier. The outliers are highlighted in purple. The color gray indicates Mogul did not find sufficient equivalents in the CSD to analyse the geometry.



5.7 Other polymers [i](#)

There are no such residues in this entry.

5.8 Polymer linkage issues [i](#)

There are no chain breaks in this entry.

6 Fit of model and data

6.1 Protein, DNA and RNA chains

In the following table, the column labelled ‘#RSRZ > 2’ contains the number (and percentage) of RSRZ outliers, followed by percent RSRZ outliers for the chain as percentile scores relative to all X-ray entries and entries of similar resolution. The OWAB column contains the minimum, median, 95th percentile and maximum values of the occupancy-weighted average B-factor per residue. The column labelled ‘Q < 0.9’ lists the number of (and percentage) of residues with an average occupancy less than 0.9.

Mol	Chain	Analysed	<RSRZ>	#RSRZ>2	OWAB(Å ²)	Q<0.9
1	A	481/605 (79%)	-0.12	12 (2%) 58 49	21, 59, 111, 164	0
2	B	839/938 (89%)	0.28	39 (4%) 37 30	20, 84, 145, 184	0
3	D	7/11 (63%)	1.93	2 (28%) 1 1	79, 93, 105, 118	0
All	All	1327/1554 (85%)	0.14	53 (3%) 42 34	20, 74, 137, 184	0

All (53) RSRZ outliers are listed below:

Mol	Chain	Res	Type	RSRZ
1	A	27	LEU	5.2
2	B	354	SER	4.7
2	B	568	PRO	4.5
2	B	647	ILE	4.1
1	A	387	GLY	3.9
2	B	2671	ALA	3.9
3	D	31	ALA	3.8
2	B	927	LYS	3.4
1	A	26	TYR	3.4
2	B	356	PHE	3.2
2	B	276	TYR	3.2
2	B	492	LEU	3.1
2	B	328	ARG	3.0
2	B	577	ILE	2.9
2	B	2686	GLY	2.9
2	B	262	VAL	2.9
1	A	556	ARG	2.9
3	D	24	ALA	2.8
1	A	308	ARG	2.8
2	B	598	LEU	2.8
1	A	305	PRO	2.7
2	B	2030	PRO	2.7
2	B	2031	LYS	2.7

Continued on next page...

Continued from previous page...

Mol	Chain	Res	Type	RSRZ
2	B	833	HIS	2.6
1	A	306	GLN	2.6
2	B	358	ILE	2.6
2	B	478	ALA	2.6
2	B	841	HIS	2.5
2	B	2023	LYS	2.5
2	B	346	ASP	2.4
2	B	355	GLY	2.3
2	B	572	ASN	2.3
2	B	586	GLN	2.3
2	B	640	PRO	2.3
2	B	555	LYS	2.3
2	B	641	PRO	2.3
2	B	836	GLY	2.3
2	B	414	PRO	2.2
2	B	832	SER	2.2
2	B	454	LEU	2.2
2	B	740	GLN	2.2
2	B	556	THR	2.2
1	A	81	CYS	2.2
2	B	406	PRO	2.1
2	B	324	VAL	2.1
2	B	925	LEU	2.1
1	A	68	CYS	2.1
1	A	394	GLN	2.1
2	B	587	VAL	2.1
1	A	390	ILE	2.1
2	B	2682	LEU	2.1
2	B	2025	ALA	2.1
1	A	393	ALA	2.0

6.2 Non-standard residues in protein, DNA, RNA chains ⓘ

In the following table, the Atoms column lists the number of modelled atoms in the group and the number defined in the chemical component dictionary. The B-factors column lists the minimum, median, 95th percentile and maximum values of B factors of atoms in the group. The column labelled 'Q< 0.9' lists the number of atoms with occupancy less than 0.9.

Mol	Type	Chain	Res	Atoms	RSCC	RSR	B-factors(Å ²)	Q<0.9
3	M3L	D	27	12/13	0.92	0.17	70,74,88,88	0

6.3 Carbohydrates [i](#)

There are no oligosaccharides in this entry.

6.4 Ligands [i](#)

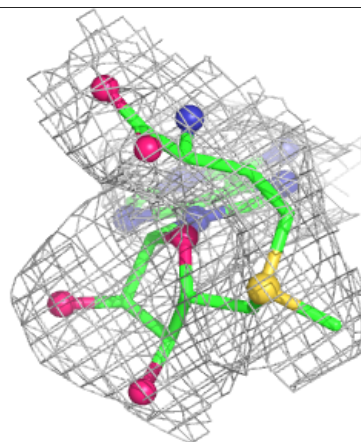
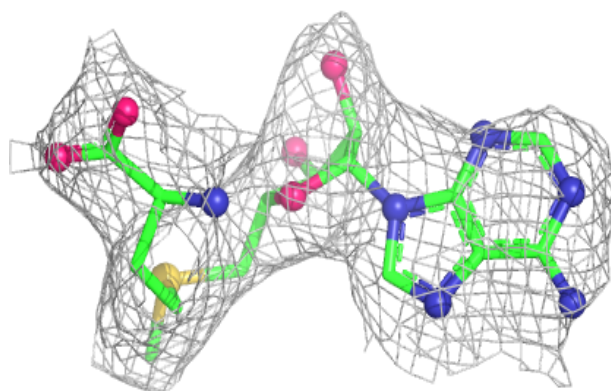
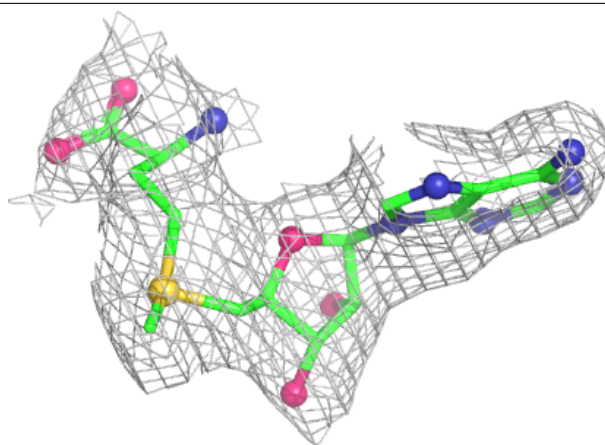
In the following table, the Atoms column lists the number of modelled atoms in the group and the number defined in the chemical component dictionary. The B-factors column lists the minimum, median, 95th percentile and maximum values of B factors of atoms in the group. The column labelled 'Q< 0.9' lists the number of atoms with occupancy less than 0.9.

Mol	Type	Chain	Res	Atoms	RSCC	RSR	B-factors(\AA^2)	Q<0.9
5	SAM	B	8009	27/27	0.95	0.10	71,87,93,95	0
4	ZN	B	8008	1/1	0.97	0.06	142,142,142,142	0
4	ZN	B	8002	1/1	0.99	0.05	75,75,75,75	0
4	ZN	B	8006	1/1	0.99	0.04	66,66,66,66	0
4	ZN	B	8005	1/1	1.00	0.04	69,69,69,69	0
4	ZN	B	8001	1/1	1.00	0.04	80,80,80,80	0
4	ZN	B	8007	1/1	1.00	0.04	40,40,40,40	0
4	ZN	B	8003	1/1	1.00	0.03	86,86,86,86	0
4	ZN	B	8004	1/1	1.00	0.06	72,72,72,72	0

The following is a graphical depiction of the model fit to experimental electron density of all instances of the Ligand of Interest. In addition, ligands with molecular weight > 250 and outliers as shown on the geometry validation Tables will also be included. Each fit is shown from different orientation to approximate a three-dimensional view.

Electron density around SAM B 8009:

$2mF_o-DF_c$ (at 0.7 rmsd) in gray
 mF_o-DF_c (at 3 rmsd) in purple (negative)
and green (positive)



6.5 Other polymers [i](#)

There are no such residues in this entry.