



Full wwPDB X-ray Structure Validation Report ⓘ

Mar 18, 2026 – 01:07 AM UTC

PDB ID : 5LXB / pdb_00005lxb
Title : Crystal structure of a mutant binding protein (5HTBP-AChBP) in complex with palonosetron
Authors : Ulens, C.
Deposited on : 2016-09-20
Resolution : 2.34 Å(reported)

This is a Full wwPDB X-ray Structure Validation Report for a publicly released PDB entry.

We welcome your comments at validation@mail.wwpdb.org

A user guide is available at

<https://www.wwpdb.org/validation/2017/XrayValidationReportHelp>

with specific help available everywhere you see the ⓘ symbol.

The types of validation reports are described at

<http://www.wwpdb.org/validation/2017/FAQs#types>.

The following versions of software and data (see [references ⓘ](#)) were used in the production of this report:

MolProbity	:	4-5-2 with Phenix2.0
Mogul	:	2022.3.0, CSD as543be (2022)
Xtriage (Phenix)	:	2.0
EDS	:	3.0
Buster-report	:	wwPDB partial adaption of 1.1.7 (2018)
Percentile statistics	:	20250101.v01 (using entries in the PDB archive January 1st 2025)
CCP4	:	9.0.010 (Gargrove)
Density-Fitness	:	1.0.12
Ideal geometry (proteins)	:	Engh & Huber (2001)
Ideal geometry (DNA, RNA)	:	Parkinson et al. (1996)
Validation Pipeline (wwPDB-VP)	:	2.49

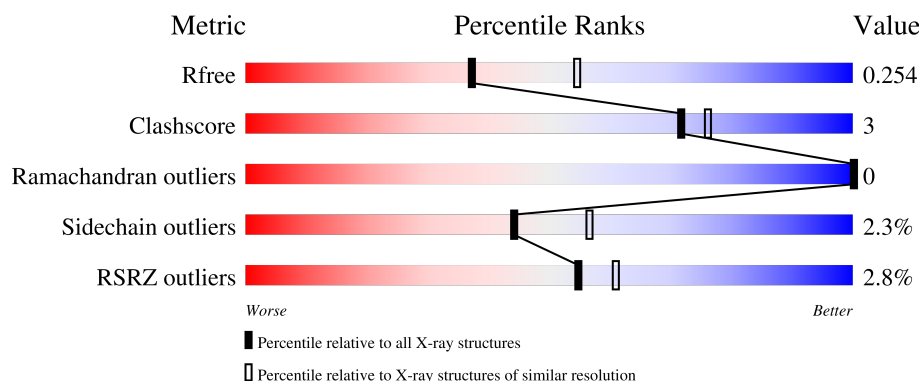
1 Overall quality at a glance

The following experimental techniques were used to determine the structure:

X-RAY DIFFRACTION

The reported resolution of this entry is 2.34 Å.

Percentile scores (ranging between 0-100) for global validation metrics of the entry are shown in the following graphic. The table shows the number of entries on which the scores are based.



Metric	Whole archive (#Entries)	Similar resolution (#Entries, resolution range(Å))
R_{free}	180053	3031 (2.36-2.32)
Clashscore	190562	3127 (2.36-2.32)
Ramachandran outliers	187476	3095 (2.36-2.32)
Sidechain outliers	187428	3095 (2.36-2.32)
RSRZ outliers	180081	3033 (2.36-2.32)

The table below summarises the geometric issues observed across the polymeric chains and their fit to the electron density. The red, orange, yellow and green segments of the lower bar indicate the fraction of residues that contain outliers for ≥ 3 , 2, 1 and 0 types of geometric quality criteria respectively. A grey segment represents the fraction of residues that are not modelled. The numeric value for each fraction is indicated below the corresponding segment, with a dot representing fractions $\leq 5\%$. The upper red bar (where present) indicates the fraction of residues that have poor fit to the electron density. The numeric value is given above the bar.

Mol	Chain	Length	Quality of chain
1	A	242	 2% 77% 7% 15%
1	B	242	 2% 78% 5% 15%
1	C	242	 2% 79% 5% 15%
1	D	242	 2% 78% 6% 15%
1	E	242	 2% 77% 7% 15%

Continued on next page...

Continued from previous page...

Mol	Chain	Length	Quality of chain
1	F	242	<div><div><div></div><div></div><div></div></div><div><div>2%</div><div>78%</div><div>5%</div><div>•</div><div>15%</div></div></div>
1	G	242	<div><div><div></div><div></div><div></div></div><div><div>3%</div><div>76%</div><div>7%</div><div>•</div><div>15%</div></div></div>
1	H	242	<div><div><div></div><div></div><div></div></div><div><div>2%</div><div>77%</div><div>6%</div><div>•</div><div>15%</div></div></div>
1	I	242	<div><div><div></div><div></div><div></div></div><div><div>4%</div><div>80%</div><div>5%</div><div>•</div><div>15%</div></div></div>
1	J	242	<div><div><div></div><div></div><div></div></div><div><div>2%</div><div>78%</div><div>6%</div><div>•</div><div>15%</div></div></div>

2 Entry composition

There are 4 unique types of molecules in this entry. The entry contains 16946 atoms, of which 0 are hydrogens and 0 are deuteriums.

In the tables below, the ZeroOcc column contains the number of atoms modelled with zero occupancy, the AltConf column contains the number of residues with at least one atom in alternate conformation and the Trace column contains the number of residues modelled with at most 2 atoms.

- Molecule 1 is a protein called Soluble acetylcholine receptor.

Mol	Chain	Residues	Atoms					ZeroOcc	AltConf	Trace
1	A	205	Total	C	N	O	S	0	0	0
			1640	1039	269	323	9			
1	B	205	Total	C	N	O	S	0	0	0
			1640	1039	269	323	9			
1	C	205	Total	C	N	O	S	0	0	0
			1640	1039	269	323	9			
1	D	205	Total	C	N	O	S	0	0	0
			1640	1039	269	323	9			
1	E	205	Total	C	N	O	S	0	0	0
			1640	1039	269	323	9			
1	F	205	Total	C	N	O	S	0	0	0
			1640	1039	269	323	9			
1	G	205	Total	C	N	O	S	0	0	0
			1640	1039	269	323	9			
1	H	205	Total	C	N	O	S	0	0	0
			1640	1039	269	323	9			
1	I	205	Total	C	N	O	S	0	0	0
			1640	1039	269	323	9			
1	J	205	Total	C	N	O	S	0	0	0
			1640	1039	269	323	9			

There are 100 discrepancies between the modelled and reference sequences:

Chain	Residue	Modelled	Actual	Comment	Reference
A	41	VAL	ALA	conflict	UNP Q8WSF8
A	53	TRP	TYR	conflict	UNP Q8WSF8
A	55	ARG	GLN	conflict	UNP Q8WSF8
A	136	VAL	ALA	conflict	UNP Q8WSF8
A	218	HIS	-	expression tag	UNP Q8WSF8
A	219	HIS	-	expression tag	UNP Q8WSF8
A	220	HIS	-	expression tag	UNP Q8WSF8
A	221	HIS	-	expression tag	UNP Q8WSF8
A	222	HIS	-	expression tag	UNP Q8WSF8

Continued on next page...

Continued from previous page...

Chain	Residue	Modelled	Actual	Comment	Reference
A	223	HIS	-	expression tag	UNP Q8WSF8
B	41	VAL	ALA	conflict	UNP Q8WSF8
B	53	TRP	TYR	conflict	UNP Q8WSF8
B	55	ARG	GLN	conflict	UNP Q8WSF8
B	136	VAL	ALA	conflict	UNP Q8WSF8
B	218	HIS	-	expression tag	UNP Q8WSF8
B	219	HIS	-	expression tag	UNP Q8WSF8
B	220	HIS	-	expression tag	UNP Q8WSF8
B	221	HIS	-	expression tag	UNP Q8WSF8
B	222	HIS	-	expression tag	UNP Q8WSF8
B	223	HIS	-	expression tag	UNP Q8WSF8
C	41	VAL	ALA	conflict	UNP Q8WSF8
C	53	TRP	TYR	conflict	UNP Q8WSF8
C	55	ARG	GLN	conflict	UNP Q8WSF8
C	136	VAL	ALA	conflict	UNP Q8WSF8
C	218	HIS	-	expression tag	UNP Q8WSF8
C	219	HIS	-	expression tag	UNP Q8WSF8
C	220	HIS	-	expression tag	UNP Q8WSF8
C	221	HIS	-	expression tag	UNP Q8WSF8
C	222	HIS	-	expression tag	UNP Q8WSF8
C	223	HIS	-	expression tag	UNP Q8WSF8
D	41	VAL	ALA	conflict	UNP Q8WSF8
D	53	TRP	TYR	conflict	UNP Q8WSF8
D	55	ARG	GLN	conflict	UNP Q8WSF8
D	136	VAL	ALA	conflict	UNP Q8WSF8
D	218	HIS	-	expression tag	UNP Q8WSF8
D	219	HIS	-	expression tag	UNP Q8WSF8
D	220	HIS	-	expression tag	UNP Q8WSF8
D	221	HIS	-	expression tag	UNP Q8WSF8
D	222	HIS	-	expression tag	UNP Q8WSF8
D	223	HIS	-	expression tag	UNP Q8WSF8
E	41	VAL	ALA	conflict	UNP Q8WSF8
E	53	TRP	TYR	conflict	UNP Q8WSF8
E	55	ARG	GLN	conflict	UNP Q8WSF8
E	136	VAL	ALA	conflict	UNP Q8WSF8
E	218	HIS	-	expression tag	UNP Q8WSF8
E	219	HIS	-	expression tag	UNP Q8WSF8
E	220	HIS	-	expression tag	UNP Q8WSF8
E	221	HIS	-	expression tag	UNP Q8WSF8
E	222	HIS	-	expression tag	UNP Q8WSF8
E	223	HIS	-	expression tag	UNP Q8WSF8
F	41	VAL	ALA	conflict	UNP Q8WSF8

Continued on next page...

Continued from previous page...

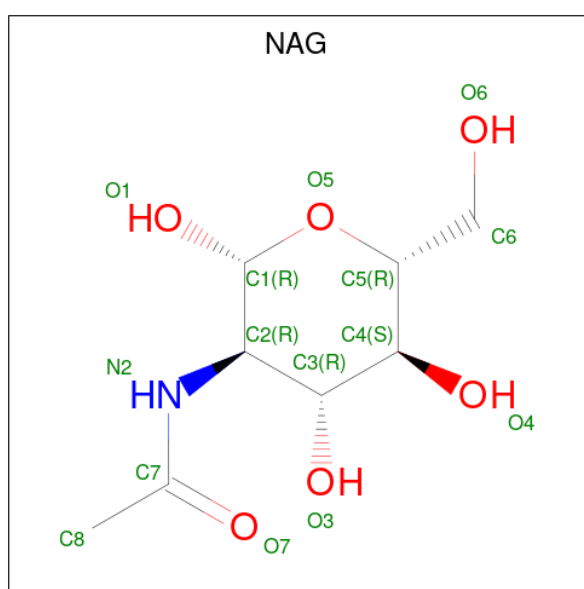
Chain	Residue	Modelled	Actual	Comment	Reference
F	53	TRP	TYR	conflict	UNP Q8WSF8
F	55	ARG	GLN	conflict	UNP Q8WSF8
F	136	VAL	ALA	conflict	UNP Q8WSF8
F	218	HIS	-	expression tag	UNP Q8WSF8
F	219	HIS	-	expression tag	UNP Q8WSF8
F	220	HIS	-	expression tag	UNP Q8WSF8
F	221	HIS	-	expression tag	UNP Q8WSF8
F	222	HIS	-	expression tag	UNP Q8WSF8
F	223	HIS	-	expression tag	UNP Q8WSF8
G	41	VAL	ALA	conflict	UNP Q8WSF8
G	53	TRP	TYR	conflict	UNP Q8WSF8
G	55	ARG	GLN	conflict	UNP Q8WSF8
G	136	VAL	ALA	conflict	UNP Q8WSF8
G	218	HIS	-	expression tag	UNP Q8WSF8
G	219	HIS	-	expression tag	UNP Q8WSF8
G	220	HIS	-	expression tag	UNP Q8WSF8
G	221	HIS	-	expression tag	UNP Q8WSF8
G	222	HIS	-	expression tag	UNP Q8WSF8
G	223	HIS	-	expression tag	UNP Q8WSF8
H	41	VAL	ALA	conflict	UNP Q8WSF8
H	53	TRP	TYR	conflict	UNP Q8WSF8
H	55	ARG	GLN	conflict	UNP Q8WSF8
H	136	VAL	ALA	conflict	UNP Q8WSF8
H	218	HIS	-	expression tag	UNP Q8WSF8
H	219	HIS	-	expression tag	UNP Q8WSF8
H	220	HIS	-	expression tag	UNP Q8WSF8
H	221	HIS	-	expression tag	UNP Q8WSF8
H	222	HIS	-	expression tag	UNP Q8WSF8
H	223	HIS	-	expression tag	UNP Q8WSF8
I	41	VAL	ALA	conflict	UNP Q8WSF8
I	53	TRP	TYR	conflict	UNP Q8WSF8
I	55	ARG	GLN	conflict	UNP Q8WSF8
I	136	VAL	ALA	conflict	UNP Q8WSF8
I	218	HIS	-	expression tag	UNP Q8WSF8
I	219	HIS	-	expression tag	UNP Q8WSF8
I	220	HIS	-	expression tag	UNP Q8WSF8
I	221	HIS	-	expression tag	UNP Q8WSF8
I	222	HIS	-	expression tag	UNP Q8WSF8
I	223	HIS	-	expression tag	UNP Q8WSF8
J	41	VAL	ALA	conflict	UNP Q8WSF8
J	53	TRP	TYR	conflict	UNP Q8WSF8
J	55	ARG	GLN	conflict	UNP Q8WSF8

Continued on next page...

Continued from previous page...

Chain	Residue	Modelled	Actual	Comment	Reference
J	136	VAL	ALA	conflict	UNP Q8WSF8
J	218	HIS	-	expression tag	UNP Q8WSF8
J	219	HIS	-	expression tag	UNP Q8WSF8
J	220	HIS	-	expression tag	UNP Q8WSF8
J	221	HIS	-	expression tag	UNP Q8WSF8
J	222	HIS	-	expression tag	UNP Q8WSF8
J	223	HIS	-	expression tag	UNP Q8WSF8

- Molecule 2 is 2-acetamido-2-deoxy-beta-D-glucopyranose (CCD ID: NAG) (formula: $C_8H_{15}NO_6$).



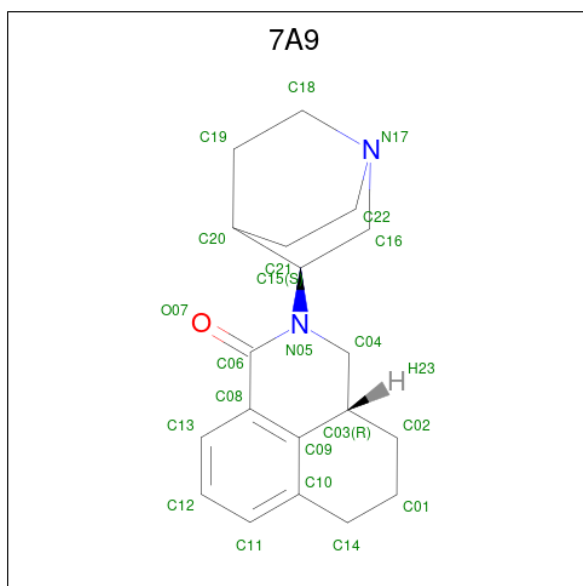
Mol	Chain	Residues	Atoms				ZeroOcc	AltConf
2	A	1	Total	C	N	O	0	0
			14	8	1	5		
2	C	1	Total	C	N	O	0	0
			14	8	1	5		
2	D	1	Total	C	N	O	0	0
			14	8	1	5		
2	E	1	Total	C	N	O	0	0
			14	8	1	5		
2	F	1	Total	C	N	O	0	0
			14	8	1	5		
2	G	1	Total	C	N	O	0	0
			14	8	1	5		
2	I	1	Total	C	N	O	0	0
			14	8	1	5		

Continued on next page...

Continued from previous page...

Mol	Chain	Residues	Atoms				ZeroOcc	AltConf
2	J	1	Total	C	N	O	0	0
			14	8	1	5		

- Molecule 3 is palonosetron (CCD ID: 7A9) (formula: $C_{19}H_{24}N_2O$).



Mol	Chain	Residues	Atoms				ZeroOcc	AltConf
3	B	1	Total	C	N	O	0	0
			22	19	2	1		
3	C	1	Total	C	N	O	0	0
			22	19	2	1		
3	D	1	Total	C	N	O	0	0
			22	19	2	1		
3	E	1	Total	C	N	O	0	0
			22	19	2	1		
3	G	1	Total	C	N	O	0	0
			22	19	2	1		
3	H	1	Total	C	N	O	0	0
			22	19	2	1		
3	J	1	Total	C	N	O	0	0
			22	19	2	1		

- Molecule 4 is water.

Mol	Chain	Residues	Atoms		ZeroOcc	AltConf
4	A	29	Total	O	0	0
			29	29		

Continued on next page...


Continued from previous page...

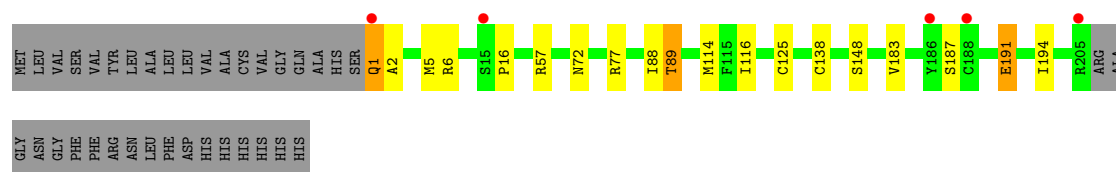
Mol	Chain	Residues	Atoms		ZeroOcc	AltConf
4	B	27	Total 27	O 27	0	0
4	C	11	Total 11	O 11	0	0
4	D	34	Total 34	O 34	0	0
4	E	54	Total 54	O 54	0	0
4	F	46	Total 46	O 46	0	0
4	G	20	Total 20	O 20	0	0
4	H	14	Total 14	O 14	0	0
4	I	20	Total 20	O 20	0	0
4	J	25	Total 25	O 25	0	0

3 Residue-property plots [i](#)


These plots are drawn for all protein, RNA, DNA and oligosaccharide chains in the entry. The first graphic for a chain summarises the proportions of the various outlier classes displayed in the second graphic. The second graphic shows the sequence view annotated by issues in geometry and electron density. Residues are color-coded according to the number of geometric quality criteria for which they contain at least one outlier: green = 0, yellow = 1, orange = 2 and red = 3 or more. A red dot above a residue indicates a poor fit to the electron density ($RSRZ > 2$). Stretches of 2 or more consecutive residues without any outlier are shown as a green connector. Residues present in the sample, but not in the model, are shown in grey.

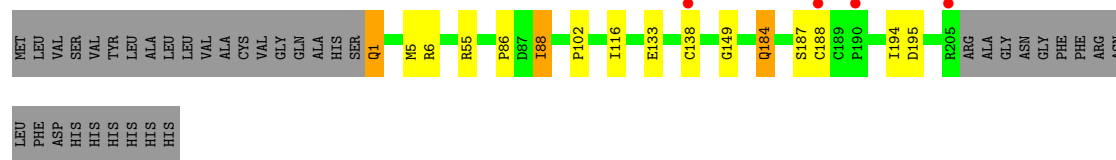
- Molecule 1: Soluble acetylcholine receptor

Chain A: 



- Molecule 1: Soluble acetylcholine receptor

Chain B: 




- Molecule 1: Soluble acetylcholine receptor

Chain C: 

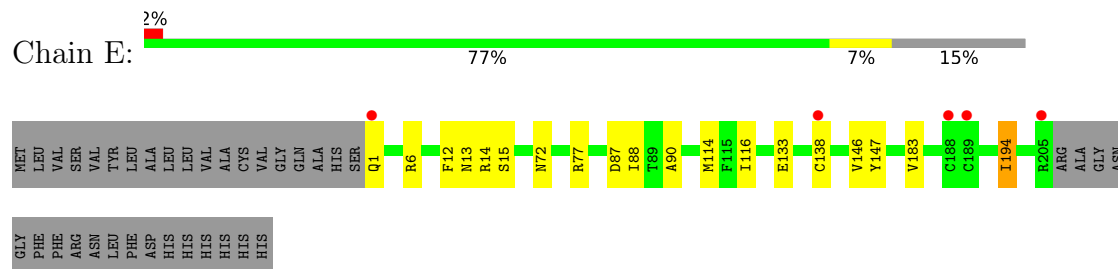


- Molecule 1: Soluble acetylcholine receptor

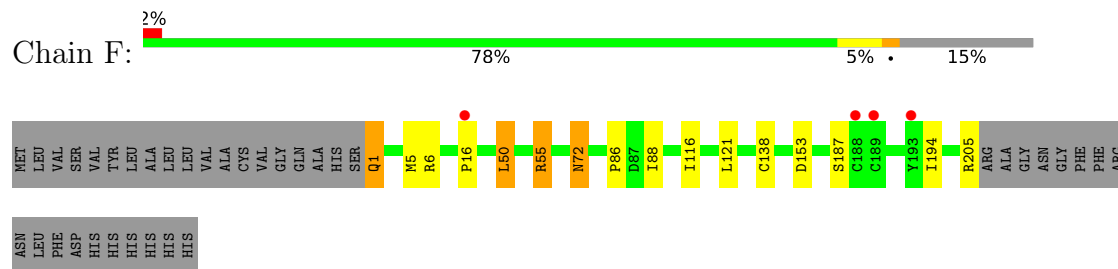
Chain D: 



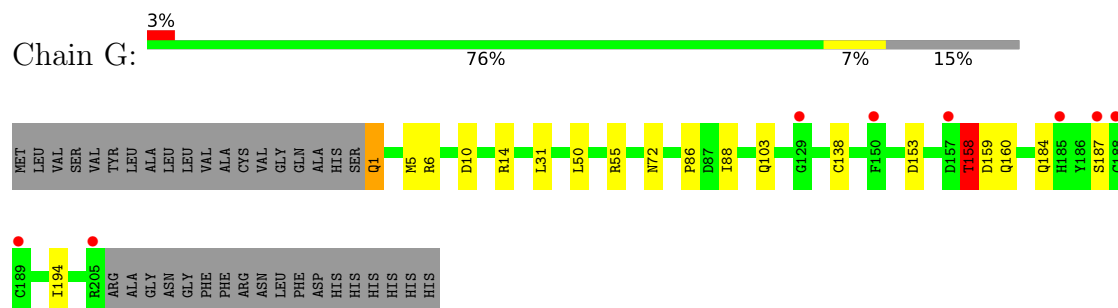
- Molecule 1: Soluble acetylcholine receptor



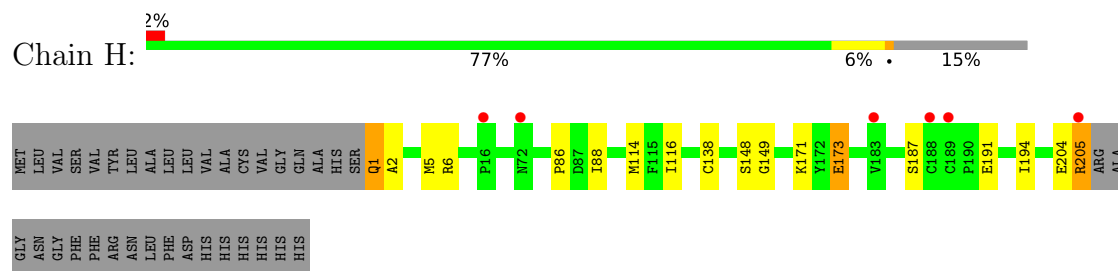
- Molecule 1: Soluble acetylcholine receptor



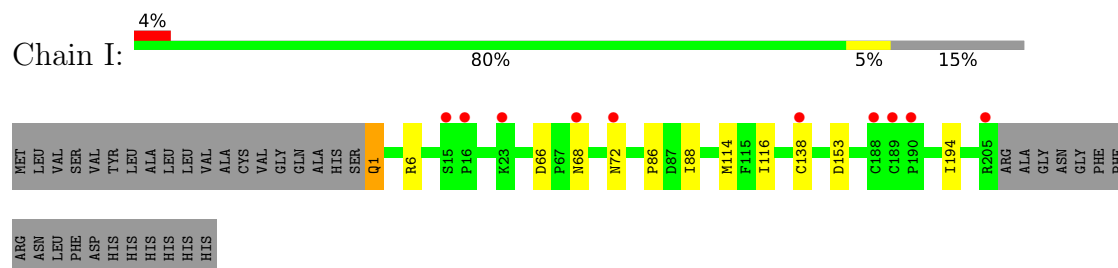
- Molecule 1: Soluble acetylcholine receptor



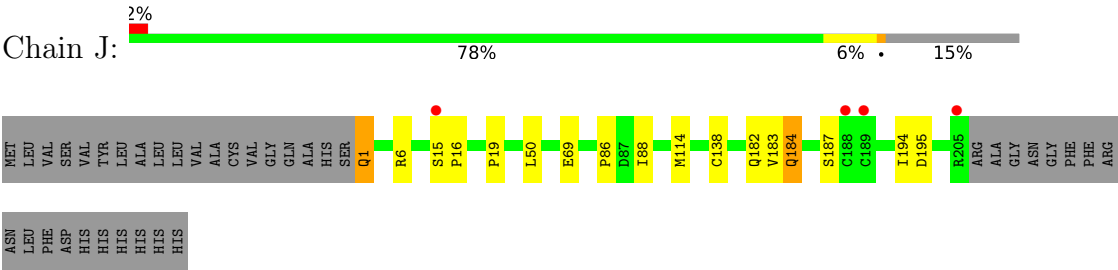
- Molecule 1: Soluble acetylcholine receptor



- Molecule 1: Soluble acetylcholine receptor



● Molecule 1: Soluble acetylcholine receptor



4 Data and refinement statistics

Property	Value	Source
Space group	P 1 21 1	Depositor
Cell constants a, b, c, α , β , γ	72.22Å 137.05Å 131.25Å 90.00° 93.78° 90.00°	Depositor
Resolution (Å)	130.96 – 2.34 130.96 – 2.34	Depositor EDS
% Data completeness (in resolution range)	98.8 (130.96-2.34) 98.8 (130.96-2.34)	Depositor EDS
R_{merge}	(Not available)	Depositor
R_{sym}	(Not available)	Depositor
$\langle I/\sigma(I) \rangle$ ¹	1.47 (at 2.34Å)	Xtriage
Refinement program	REFMAC 5.8.0157	Depositor
R, R_{free}	0.218 , 0.245 0.226 , 0.254	Depositor DCC
R_{free} test set	5294 reflections (4.94%)	wwPDB-VP
Wilson B-factor (Å ²)	47.2	Xtriage
Anisotropy	0.427	Xtriage
Bulk solvent k_{sol} (e/Å ³), B_{sol} (Å ²)	0.37 , 51.1	EDS
L-test for twinning ²	$\langle L \rangle = 0.48$, $\langle L^2 \rangle = 0.31$	Xtriage
Estimated twinning fraction	No twinning to report.	Xtriage
F_o, F_c correlation	0.95	EDS
Total number of atoms	16946	wwPDB-VP
Average B, all atoms (Å ²)	55.0	wwPDB-VP

Xtriage's analysis on translational NCS is as follows: *The largest off-origin peak in the Patterson function is 2.98% of the height of the origin peak. No significant pseudotranslation is detected.*

¹Intensities estimated from amplitudes.

²Theoretical values of $\langle |L| \rangle$, $\langle L^2 \rangle$ for acentric reflections are 0.5, 0.333 respectively for untwinned datasets, and 0.375, 0.2 for perfectly twinned datasets.

5 Model quality

5.1 Standard geometry

Bond lengths and bond angles in the following residue types are not validated in this section: NAG, 7A9

The Z score for a bond length (or angle) is the number of standard deviations the observed value is removed from the expected value. A bond length (or angle) with $|Z| > 5$ is considered an outlier worth inspection. RMSZ is the root-mean-square of all Z scores of the bond lengths (or angles).

Mol	Chain	Bond lengths		Bond angles	
		RMSZ	# $ Z > 5$	RMSZ	# $ Z > 5$
1	A	1.05	2/1681 (0.1%)	0.97	3/2294 (0.1%)
1	B	1.01	0/1681	0.96	4/2294 (0.2%)
1	C	0.96	0/1681	0.93	1/2294 (0.0%)
1	D	1.03	1/1681 (0.1%)	0.98	3/2294 (0.1%)
1	E	1.18	6/1681 (0.4%)	1.01	4/2294 (0.2%)
1	F	1.07	0/1681	1.01	5/2294 (0.2%)
1	G	1.02	1/1681 (0.1%)	0.99	4/2294 (0.2%)
1	H	1.00	0/1681	0.97	3/2294 (0.1%)
1	I	0.98	0/1681	0.94	1/2294 (0.0%)
1	J	1.01	2/1681 (0.1%)	0.95	2/2294 (0.1%)
All	All	1.03	12/16810 (0.1%)	0.97	30/22940 (0.1%)

Chiral center outliers are detected by calculating the chiral volume of a chiral center and verifying if the center is modelled as a planar moiety or with the opposite hand. A planarity outlier is detected by checking planarity of atoms in a peptide group, atoms in a mainchain group or atoms of a sidechain that are expected to be planar.

Mol	Chain	#Chirality outliers	#Planarity outliers
1	E	0	1
1	F	0	1
All	All	0	2

All (12) bond length outliers are listed below:

Mol	Chain	Res	Type	Atoms	Z	Observed(Å)	Ideal(Å)
1	G	158	THR	CB-CG2	-8.70	1.23	1.52
1	E	14	ARG	C-O	-8.49	1.12	1.24
1	E	14	ARG	CA-CB	-6.86	1.43	1.53
1	A	89	THR	CB-CG2	-6.38	1.31	1.52
1	E	14	ARG	N-CA	6.29	1.54	1.46
1	E	13	ASN	C-N	-6.02	1.25	1.33

Continued on next page...

Continued from previous page...

Mol	Chain	Res	Type	Atoms	Z	Observed(Å)	Ideal(Å)
1	J	19	PRO	C-O	-5.68	1.18	1.23
1	D	183	VAL	C-O	-5.67	1.17	1.24
1	E	12	PHE	C-N	5.53	1.41	1.33
1	E	14	ARG	NE-CZ	5.52	1.39	1.33
1	J	182	GLN	CD-OE1	5.29	1.33	1.23
1	A	191	GLU	CD-OE1	-5.16	1.15	1.25

All (30) bond angle outliers are listed below:

Mol	Chain	Res	Type	Atoms	Z	Observed(°)	Ideal(°)
1	G	6	ARG	NE-CZ-NH2	10.14	128.32	119.20
1	D	6	ARG	NE-CZ-NH2	9.59	127.83	119.20
1	F	6	ARG	NE-CZ-NH2	9.15	127.43	119.20
1	E	13	ASN	N-CA-C	7.02	120.41	112.97
1	G	6	ARG	NH1-CZ-NH2	-7.00	110.20	119.30
1	D	6	ARG	NH1-CZ-NH2	-6.97	110.25	119.30
1	B	6	ARG	NE-CZ-NH2	6.80	125.32	119.20
1	F	6	ARG	NH1-CZ-NH2	-6.76	110.52	119.30
1	A	6	ARG	NE-CZ-NH2	6.69	125.22	119.20
1	C	6	ARG	NE-CZ-NH2	6.55	125.09	119.20
1	J	6	ARG	NE-CZ-NH2	6.42	124.98	119.20
1	I	6	ARG	NE-CZ-NH2	6.40	124.96	119.20
1	J	184	GLN	CG-CD-NE2	-6.37	106.84	116.40
1	H	6	ARG	NE-CZ-NH2	6.28	124.85	119.20
1	E	6	ARG	CG-CD-NE	-6.25	98.24	112.00
1	B	184	GLN	CG-CD-NE2	-6.13	107.20	116.40
1	F	55	ARG	CB-CG-CD	6.13	125.40	111.30
1	A	89	THR	OG1-CB-CG2	6.08	121.47	109.30
1	F	55	ARG	NE-CZ-NH2	5.90	124.51	119.20
1	G	103	GLN	CA-CB-CG	-5.89	102.31	114.10
1	H	173	GLU	CA-CB-CG	5.80	125.71	114.10
1	D	55	ARG	CB-CG-CD	5.72	124.46	111.30
1	E	6	ARG	NE-CZ-NH2	5.71	124.34	119.20
1	F	205	ARG	CB-CG-CD	5.67	124.35	111.30
1	H	205	ARG	CA-CB-CG	5.65	125.40	114.10
1	G	184	GLN	CA-CB-CG	5.30	124.69	114.10
1	A	187	SER	CA-CB-OG	-5.16	100.78	111.10
1	B	133	GLU	CA-CB-CG	-5.11	103.89	114.10
1	B	188	CYS	N-CA-C	5.03	117.50	111.71
1	E	194	ILE	CB-CG1-CD1	5.03	124.36	113.80

There are no chirality outliers.

All (2) planarity outliers are listed below:

Mol	Chain	Res	Type	Group
1	E	15	SER	Peptide
1	F	72	ASN	Sidechain

5.2 Too-close contacts

In the following table, the Non-H and H(model) columns list the number of non-hydrogen atoms and hydrogen atoms in the chain respectively. The H(added) column lists the number of hydrogen atoms added and optimized by MolProbity. The Clashes column lists the number of clashes within the asymmetric unit, whereas Symm-Clashes lists symmetry-related clashes.

Mol	Chain	Non-H	H(model)	H(added)	Clashes	Symm-Clashes
1	A	1640	0	1580	19	0
1	B	1640	0	1578	14	0
1	C	1640	0	1578	8	0
1	D	1640	0	1578	10	0
1	E	1640	0	1578	12	0
1	F	1640	0	1578	11	0
1	G	1640	0	1578	11	0
1	H	1640	0	1578	17	0
1	I	1640	0	1578	10	0
1	J	1640	0	1578	7	0
2	A	14	0	13	3	0
2	C	14	0	13	1	0
2	D	14	0	13	1	0
2	E	14	0	13	1	0
2	F	14	0	13	2	0
2	G	14	0	13	1	0
2	I	14	0	13	3	0
2	J	14	0	13	0	0
3	B	22	0	0	0	0
3	C	22	0	0	0	0
3	D	22	0	0	0	0
3	E	22	0	0	0	0
3	G	22	0	0	2	0
3	H	22	0	0	0	0
3	J	22	0	0	0	0
4	A	29	0	0	0	0
4	B	27	0	0	0	0
4	C	11	0	0	0	0
4	D	34	0	0	0	0
4	E	54	0	0	1	0

Continued on next page...

Continued from previous page...

Mol	Chain	Non-H	H(model)	H(added)	Clashes	Symm-Clashes
4	F	46	0	0	0	0
4	G	20	0	0	0	0
4	H	14	0	0	0	0
4	I	20	0	0	0	0
4	J	25	0	0	0	0
All	All	16946	0	15886	108	0

The all-atom clashscore is defined as the number of clashes found per 1000 atoms (including hydrogen atoms). The all-atom clashscore for this structure is 3.

All (108) close contacts within the same asymmetric unit are listed below, sorted by their clash magnitude.

Atom-1	Atom-2	Interatomic distance (Å)	Clash overlap (Å)
1:F:72:ASN:HD21	2:F:301:NAG:C1	1.75	0.99
1:A:125:CYS:SG	1:A:138:CYS:HB3	2.16	0.85
1:A:89:THR:HG21	1:B:102:PRO:HD3	1.67	0.76
1:F:72:ASN:ND2	2:F:301:NAG:C1	2.50	0.74
1:E:1:GLN:OE1	1:E:1:GLN:N	2.22	0.73
1:D:159:ASP:OD1	1:D:160:GLN:NE2	2.22	0.73
1:G:1:GLN:OE1	1:G:1:GLN:N	2.23	0.72
1:D:72:ASN:OD1	2:D:301:NAG:C1	2.38	0.71
1:H:1:GLN:N	1:H:1:GLN:OE1	2.23	0.71
1:C:1:GLN:OE1	1:C:1:GLN:N	2.23	0.71
1:A:1:GLN:N	1:A:1:GLN:OE1	2.24	0.71
1:B:149:GLY:CA	1:B:194:ILE:CD1	2.69	0.71
1:H:149:GLY:CA	1:H:194:ILE:CD1	2.69	0.70
1:B:149:GLY:HA2	1:B:194:ILE:CD1	2.22	0.70
1:H:149:GLY:HA2	1:H:194:ILE:CD1	2.22	0.69
1:J:1:GLN:OE1	1:J:1:GLN:N	2.25	0.69
1:F:1:GLN:OE1	1:F:1:GLN:N	2.23	0.69
1:G:158:THR:HG23	1:G:160:GLN:H	1.59	0.67
1:B:1:GLN:OE1	1:B:1:GLN:N	2.22	0.67
1:H:149:GLY:HA2	1:H:194:ILE:HD13	1.78	0.66
1:I:1:GLN:OE1	1:I:1:GLN:N	2.23	0.65
1:H:173:GLU:HG3	1:H:205:ARG:C	2.21	0.65
1:E:90:ALA:O	4:E:401:HOH:O	2.13	0.65
1:A:72:ASN:HD21	2:A:301:NAG:C1	2.10	0.64
1:B:149:GLY:HA2	1:B:194:ILE:HD13	1.79	0.64
1:B:149:GLY:HA3	1:B:194:ILE:HD11	1.80	0.64
1:F:5:MET:CE	1:J:16:PRO:HD2	2.29	0.62
1:H:149:GLY:HA3	1:H:194:ILE:HD11	1.83	0.60

Continued on next page...

Continued from previous page...

Atom-1	Atom-2	Interatomic distance (Å)	Clash overlap (Å)
1:E:114:MET:HE3	1:E:116:ILE:HD11	1.83	0.60
1:C:86:PRO:HB2	1:C:88:ILE:HD13	1.83	0.60
1:B:86:PRO:HB2	1:B:88:ILE:HD13	1.85	0.58
1:D:1:GLN:OE1	1:D:1:GLN:N	2.34	0.58
1:J:184:GLN:HG3	1:J:195:ASP:OD2	2.03	0.58
3:G:302:7A9:C12	1:H:114:MET:HE2	2.34	0.57
1:H:86:PRO:HB2	1:H:88:ILE:HD13	1.86	0.57
1:H:149:GLY:HA3	1:H:194:ILE:CD1	2.33	0.57
1:B:149:GLY:HA3	1:B:194:ILE:CD1	2.33	0.57
1:G:153:ASP:OD1	1:G:194:ILE:HD13	2.04	0.56
1:H:204:GLU:O	1:H:205:ARG:HG3	2.05	0.56
1:G:158:THR:CG2	1:G:160:GLN:H	2.19	0.55
1:A:2:ALA:HA	1:A:5:MET:HE3	1.88	0.55
1:F:153:ASP:OD1	1:F:194:ILE:HD13	2.06	0.55
1:H:148:SER:HB3	1:H:191:GLU:HG3	1.88	0.55
1:E:72:ASN:OD1	2:E:301:NAG:C1	2.56	0.54
1:I:153:ASP:OD1	1:I:194:ILE:HD13	2.08	0.53
1:A:16:PRO:HD2	1:B:5:MET:CE	2.39	0.53
1:F:86:PRO:HB2	1:F:88:ILE:HD13	1.90	0.53
1:A:114:MET:HG3	1:A:116:ILE:HD11	1.89	0.53
1:A:16:PRO:HB2	1:B:5:MET:HE3	1.91	0.53
1:I:72:ASN:HD21	2:I:301:NAG:C1	2.21	0.52
1:D:114:MET:HG3	1:D:116:ILE:HD11	1.91	0.52
1:H:114:MET:HG3	1:H:116:ILE:HD11	1.93	0.51
1:F:16:PRO:HD2	1:G:5:MET:HE3	1.91	0.51
1:G:86:PRO:HB2	1:G:88:ILE:HD13	1.91	0.51
1:A:148:SER:HB3	1:A:191:GLU:HG3	1.93	0.51
1:I:86:PRO:HB2	1:I:88:ILE:HD13	1.93	0.50
1:I:72:ASN:ND2	2:I:301:NAG:C1	2.75	0.50
1:A:183:VAL:HG22	1:A:194:ILE:HD12	1.93	0.50
1:G:72:ASN:HD21	2:G:301:NAG:C1	2.25	0.50
1:A:125:CYS:SG	1:A:138:CYS:CB	2.94	0.49
1:A:72:ASN:HD21	2:A:301:NAG:C2	2.24	0.49
1:I:66:ASP:CG	1:I:68:ASN:OD1	2.56	0.49
1:F:1:GLN:N	1:F:1:GLN:CD	2.72	0.48
1:C:19:PRO:HD3	1:D:5:MET:HE2	1.95	0.48
1:B:184:GLN:HG3	1:B:195:ASP:OD2	2.14	0.48
1:I:114:MET:HG3	1:I:116:ILE:HD11	1.96	0.48
1:B:1:GLN:H1	1:B:1:GLN:CD	2.18	0.47
1:J:86:PRO:HB2	1:J:88:ILE:HD13	1.95	0.47
1:G:1:GLN:N	1:G:1:GLN:CD	2.72	0.47

Continued on next page...

Continued from previous page...

Atom-1	Atom-2	Interatomic distance (Å)	Clash overlap (Å)
1:A:72:ASN:HD21	2:A:301:NAG:H2	1.79	0.47
1:D:1:GLN:N	1:D:1:GLN:CD	2.73	0.47
1:A:57:ARG:HD3	1:A:114:MET:HE1	1.95	0.47
1:C:1:GLN:N	1:C:1:GLN:CD	2.73	0.47
1:E:133:GLU:N	1:E:133:GLU:OE1	2.48	0.47
1:J:1:GLN:N	1:J:1:GLN:CD	2.72	0.47
1:C:72:ASN:OD1	2:C:301:NAG:C7	2.63	0.47
1:H:1:GLN:N	1:H:1:GLN:CD	2.73	0.46
1:I:1:GLN:N	1:I:1:GLN:CD	2.73	0.46
1:A:77:ARG:HD3	1:E:147:TYR:CE1	2.50	0.46
1:A:1:GLN:N	1:A:1:GLN:CD	2.73	0.46
3:G:302:7A9:C13	1:H:114:MET:HE2	2.45	0.46
1:C:55:ARG:HG2	1:C:116:ILE:HD13	1.97	0.46
1:E:1:GLN:N	1:E:1:GLN:CD	2.73	0.46
1:B:55:ARG:HG2	1:B:116:ILE:HD13	1.97	0.46
1:D:159:ASP:OD1	1:D:159:ASP:C	2.58	0.45
1:F:50:LEU:HD11	1:F:121:LEU:HD23	1.99	0.45
1:F:16:PRO:HD2	1:G:5:MET:CE	2.47	0.45
1:I:72:ASN:OD1	2:I:301:NAG:C7	2.66	0.44
1:A:148:SER:CB	1:A:191:GLU:HG3	2.48	0.43
1:H:116:ILE:N	1:H:116:ILE:HD12	2.33	0.43
1:B:1:GLN:N	1:B:1:GLN:CD	2.74	0.43
1:E:116:ILE:HD12	1:E:116:ILE:N	2.33	0.43
1:I:116:ILE:HD12	1:I:116:ILE:N	2.34	0.43
1:D:146:VAL:HG23	1:E:77:ARG:HG2	1.99	0.43
1:F:116:ILE:HD12	1:F:116:ILE:N	2.34	0.43
1:J:183:VAL:HG22	1:J:194:ILE:HD12	2.01	0.43
1:D:116:ILE:HD12	1:D:116:ILE:N	2.34	0.43
1:H:2:ALA:HA	1:H:5:MET:HE3	2.01	0.42
1:H:204:GLU:C	1:H:205:ARG:HG3	2.44	0.42
1:A:116:ILE:N	1:A:116:ILE:HD12	2.33	0.42
1:G:10:ASP:HA	1:G:14:ARG:HD3	2.02	0.42
1:G:158:THR:HG23	1:G:159:ASP:N	2.35	0.42
1:E:183:VAL:HG22	1:E:194:ILE:HD12	2.02	0.41
1:A:77:ARG:HG2	1:E:146:VAL:HG23	2.03	0.41
1:C:94:THR:O	1:D:120:ARG:HD2	2.21	0.41
1:E:87:ASP:OD2	1:E:146:VAL:HG22	2.21	0.41
1:J:114:MET:HE2	1:J:114:MET:HB2	1.93	0.40
1:C:87:ASP:OD2	1:C:146:VAL:HG22	2.22	0.40

There are no symmetry-related clashes.

5.3 Torsion angles

5.3.1 Protein backbone

In the following table, the Percentiles column shows the percent Ramachandran outliers of the chain as a percentile score with respect to all X-ray entries followed by that with respect to entries of similar resolution.

The Analysed column shows the number of residues for which the backbone conformation was analysed, and the total number of residues.

Mol	Chain	Analysed	Favoured	Allowed	Outliers	Percentiles	
1	A	203/242 (84%)	200 (98%)	3 (2%)	0	100	100
1	B	203/242 (84%)	201 (99%)	2 (1%)	0	100	100
1	C	203/242 (84%)	201 (99%)	2 (1%)	0	100	100
1	D	203/242 (84%)	200 (98%)	3 (2%)	0	100	100
1	E	203/242 (84%)	200 (98%)	3 (2%)	0	100	100
1	F	203/242 (84%)	201 (99%)	2 (1%)	0	100	100
1	G	203/242 (84%)	200 (98%)	3 (2%)	0	100	100
1	H	203/242 (84%)	201 (99%)	2 (1%)	0	100	100
1	I	203/242 (84%)	199 (98%)	4 (2%)	0	100	100
1	J	203/242 (84%)	200 (98%)	3 (2%)	0	100	100
All	All	2030/2420 (84%)	2003 (99%)	27 (1%)	0	100	100

There are no Ramachandran outliers to report.

5.3.2 Protein sidechains

In the following table, the Percentiles column shows the percent sidechain outliers of the chain as a percentile score with respect to all X-ray entries followed by that with respect to entries of similar resolution.

The Analysed column shows the number of residues for which the sidechain conformation was analysed, and the total number of residues.

Mol	Chain	Analysed	Rotameric	Outliers	Percentiles	
1	A	188/218 (86%)	186 (99%)	2 (1%)	65	77
1	B	188/218 (86%)	184 (98%)	4 (2%)	47	60
1	C	188/218 (86%)	182 (97%)	6 (3%)	34	44
1	D	188/218 (86%)	183 (97%)	5 (3%)	39	51

Continued on next page...

Continued from previous page...

Mol	Chain	Analysed	Rotameric	Outliers	Percentiles	
1	E	188/218 (86%)	186 (99%)	2 (1%)	65	77
1	F	188/218 (86%)	183 (97%)	5 (3%)	39	51
1	G	188/218 (86%)	181 (96%)	7 (4%)	30	39
1	H	188/218 (86%)	184 (98%)	4 (2%)	47	60
1	I	188/218 (86%)	186 (99%)	2 (1%)	65	77
1	J	188/218 (86%)	182 (97%)	6 (3%)	34	44
All	All	1880/2180 (86%)	1837 (98%)	43 (2%)	44	56

All (43) residues with a non-rotameric sidechain are listed below:

Mol	Chain	Res	Type
1	A	1	GLN
1	A	88	ILE
1	B	1	GLN
1	B	88	ILE
1	B	138	CYS
1	B	187	SER
1	C	1	GLN
1	C	14	ARG
1	C	40	LYS
1	C	88	ILE
1	C	133	GLU
1	C	138	CYS
1	D	1	GLN
1	D	88	ILE
1	D	138	CYS
1	D	187	SER
1	D	205	ARG
1	E	88	ILE
1	E	138	CYS
1	F	1	GLN
1	F	50	LEU
1	F	55	ARG
1	F	138	CYS
1	F	187	SER
1	G	1	GLN
1	G	31	LEU
1	G	50	LEU
1	G	55	ARG
1	G	138	CYS

Continued on next page...

Continued from previous page...

Mol	Chain	Res	Type
1	G	158	THR
1	G	187	SER
1	H	1	GLN
1	H	138	CYS
1	H	171	LYS
1	H	187	SER
1	I	1	GLN
1	I	138	CYS
1	J	1	GLN
1	J	15	SER
1	J	50	LEU
1	J	69	GLU
1	J	138	CYS
1	J	187	SER

Sometimes sidechains can be flipped to improve hydrogen bonding and reduce clashes. All (16) such sidechains are listed below:

Mol	Chain	Res	Type
1	A	72	ASN
1	A	98	GLN
1	A	184	GLN
1	C	98	GLN
1	D	98	GLN
1	E	98	GLN
1	F	72	ASN
1	G	72	ASN
1	G	98	GLN
1	H	98	GLN
1	H	109	HIS
1	I	72	ASN
1	I	98	GLN
1	I	184	GLN
1	J	68	ASN
1	J	109	HIS

5.3.3 RNA ⓘ

There are no RNA molecules in this entry.

5.4 Non-standard residues in protein, DNA, RNA chains [i](#)

There are no non-standard protein/DNA/RNA residues in this entry.

5.5 Carbohydrates [i](#)

There are no oligosaccharides in this entry.

5.6 Ligand geometry [i](#)

15 ligands are modelled in this entry.

In the following table, the Counts columns list the number of bonds (or angles) for which Mogul statistics could be retrieved, the number of bonds (or angles) that are observed in the model and the number of bonds (or angles) that are defined in the Chemical Component Dictionary. The Link column lists molecule types, if any, to which the group is linked. The Z score for a bond length (or angle) is the number of standard deviations the observed value is removed from the expected value. A bond length (or angle) with $|Z| > 2$ is considered an outlier worth inspection. RMSZ is the root-mean-square of all Z scores of the bond lengths (or angles).

Mol	Type	Chain	Res	Link	Bond lengths			Bond angles		
					Counts	RMSZ	$\# Z > 2$	Counts	RMSZ	$\# Z > 2$
2	NAG	I	301	-	14,14,15	0.73	0	17,19,21	1.77	4 (23%)
3	7A9	B	301	-	26,26,26	0.83	1 (3%)	33,39,39	1.44	5 (15%)
3	7A9	D	302	-	26,26,26	0.96	2 (7%)	33,39,39	1.12	1 (3%)
2	NAG	D	301	-	14,14,15	0.74	0	17,19,21	2.44	6 (35%)
3	7A9	H	301	-	26,26,26	0.96	2 (7%)	33,39,39	1.16	1 (3%)
3	7A9	C	302	-	26,26,26	1.13	3 (11%)	33,39,39	1.61	6 (18%)
3	7A9	E	302	-	26,26,26	0.75	0	33,39,39	1.23	4 (12%)
2	NAG	F	301	-	14,14,15	0.81	0	17,19,21	3.32	7 (41%)
2	NAG	G	301	-	14,14,15	0.44	0	17,19,21	1.03	1 (5%)
3	7A9	G	302	-	26,26,26	0.78	0	33,39,39	1.21	2 (6%)
2	NAG	E	301	-	14,14,15	0.73	0	17,19,21	1.84	4 (23%)
3	7A9	J	302	-	26,26,26	0.96	1 (3%)	33,39,39	1.37	4 (12%)
2	NAG	C	301	-	14,14,15	0.62	0	17,19,21	1.37	3 (17%)
2	NAG	J	301	-	14,14,15	0.61	0	17,19,21	0.98	1 (5%)
2	NAG	A	301	-	14,14,15	0.67	0	17,19,21	1.83	2 (11%)

In the following table, the Chirals column lists the number of chiral outliers, the number of chiral centers analysed, the number of these observed in the model and the number defined in the Chemical Component Dictionary. Similar counts are reported in the Torsion and Rings columns.

'-' means no outliers of that kind were identified.

Mol	Type	Chain	Res	Link	Chirals	Torsions	Rings
2	NAG	I	301	-	-	1/6/23/26	0/1/1/1
3	7A9	B	301	-	-	2/4/44/44	0/6/5/5
3	7A9	D	302	-	-	3/4/44/44	0/6/5/5
2	NAG	D	301	-	-	4/6/23/26	0/1/1/1
3	7A9	H	301	-	-	3/4/44/44	0/6/5/5
3	7A9	C	302	-	-	4/4/44/44	0/6/5/5
3	7A9	E	302	-	-	2/4/44/44	0/6/5/5
2	NAG	F	301	-	-	5/6/23/26	0/1/1/1
2	NAG	G	301	-	-	0/6/23/26	0/1/1/1
3	7A9	G	302	-	-	2/4/44/44	0/6/5/5
2	NAG	E	301	-	-	0/6/23/26	0/1/1/1
3	7A9	J	302	-	-	2/4/44/44	0/6/5/5
2	NAG	C	301	-	-	1/6/23/26	0/1/1/1
2	NAG	J	301	-	-	3/6/23/26	0/1/1/1
2	NAG	A	301	-	-	1/6/23/26	0/1/1/1

All (9) bond length outliers are listed below:

Mol	Chain	Res	Type	Atoms	Z	Observed(Å)	Ideal(Å)
3	C	302	7A9	C09-C03	-2.78	1.47	1.51
3	C	302	7A9	C16-C15	2.54	1.57	1.53
3	H	301	7A9	C08-C06	2.43	1.52	1.47
3	D	302	7A9	C09-C03	-2.40	1.47	1.51
3	C	302	7A9	C16-N17	2.35	1.50	1.46
3	J	302	7A9	C16-C15	2.21	1.56	1.53
3	B	301	7A9	C16-C15	2.10	1.56	1.53
3	H	301	7A9	C16-C15	2.05	1.56	1.53
3	D	302	7A9	C06-N05	-2.04	1.32	1.36

All (51) bond angle outliers are listed below:

Mol	Chain	Res	Type	Atoms	Z	Observed(°)	Ideal(°)
2	F	301	NAG	C2-N2-C7	7.58	133.06	122.90
2	F	301	NAG	O5-C1-C2	-7.11	100.28	111.29
2	F	301	NAG	C1-O5-C5	-5.43	104.91	112.19
2	D	301	NAG	C2-N2-C7	5.23	129.91	122.90
3	C	302	7A9	C04-C03-C09	5.10	117.46	108.87
2	D	301	NAG	C1-O5-C5	4.45	118.15	112.19
2	A	301	NAG	C1-O5-C5	4.39	118.07	112.19

Continued on next page...

Continued from previous page...

Mol	Chain	Res	Type	Atoms	Z	Observed(°)	Ideal(°)
3	J	302	7A9	C04-C03-C09	4.35	116.19	108.87
3	G	302	7A9	C04-C03-C09	4.32	116.14	108.87
3	H	301	7A9	C04-C03-C09	4.08	115.74	108.87
2	I	301	NAG	O4-C4-C5	4.01	119.20	109.32
3	B	301	7A9	C04-C03-C09	3.94	115.50	108.87
2	E	301	NAG	C1-O5-C5	-3.93	106.92	112.19
2	A	301	NAG	C4-C3-C2	-3.85	105.38	111.02
3	C	302	7A9	O07-C06-N05	3.75	125.30	121.91
2	F	301	NAG	C1-C2-N2	3.74	116.33	110.43
2	E	301	NAG	C2-N2-C7	3.72	127.89	122.90
2	C	301	NAG	C1-O5-C5	3.59	117.00	112.19
3	E	302	7A9	C04-C03-C09	3.59	114.91	108.87
3	D	302	7A9	C04-C03-C09	3.57	114.88	108.87
2	D	301	NAG	O5-C1-C2	3.51	116.72	111.29
2	D	301	NAG	C1-C2-N2	3.37	115.75	110.43
2	G	301	NAG	C1-O5-C5	3.30	116.61	112.19
2	D	301	NAG	C4-C3-C2	3.29	115.84	111.02
2	F	301	NAG	O7-C7-N2	-3.27	116.21	121.98
3	B	301	7A9	C19-C20-C21	-3.16	104.02	109.43
3	C	302	7A9	O07-C06-C08	-3.11	115.13	123.11
2	F	301	NAG	C8-C7-N2	3.07	121.22	116.12
2	I	301	NAG	C1-O5-C5	2.94	116.13	112.19
2	F	301	NAG	C4-C3-C2	-2.66	107.11	111.02
3	J	302	7A9	C19-C20-C21	-2.60	104.99	109.43
2	I	301	NAG	C3-C4-C5	-2.60	105.53	110.23
3	C	302	7A9	C08-C06-N05	2.51	119.51	116.26
3	J	302	7A9	C15-C16-N17	-2.49	107.07	111.39
2	E	301	NAG	O3-C3-C2	2.46	114.52	109.40
2	D	301	NAG	O7-C7-N2	2.44	126.30	121.98
2	J	301	NAG	C4-C3-C2	2.44	114.59	111.02
3	B	301	7A9	O07-C06-C08	-2.33	117.13	123.11
3	G	302	7A9	C03-C04-N05	2.29	115.81	111.35
2	C	301	NAG	C2-N2-C7	2.25	125.91	122.90
3	B	301	7A9	O07-C06-N05	2.25	123.94	121.91
3	E	302	7A9	O07-C06-N05	2.22	123.92	121.91
3	E	302	7A9	C19-C20-C21	-2.21	105.64	109.43
2	I	301	NAG	C6-C5-C4	2.21	118.45	113.02
3	C	302	7A9	C09-C08-C06	-2.16	119.15	121.19
2	E	301	NAG	O7-C7-N2	2.15	125.78	121.98
3	E	302	7A9	C03-C04-N05	2.13	115.50	111.35
2	C	301	NAG	C3-C4-C5	2.12	114.08	110.23
3	J	302	7A9	C02-C03-C04	-2.06	107.93	111.22

Continued on next page...

Continued from previous page...

Mol	Chain	Res	Type	Atoms	Z	Observed(°)	Ideal(°)
3	B	301	7A9	C08-C06-N05	2.04	118.91	116.26
3	C	302	7A9	C02-C03-C09	2.03	112.51	108.09

There are no chirality outliers.

All (33) torsion outliers are listed below:

Mol	Chain	Res	Type	Atoms
2	D	301	NAG	C1-C2-N2-C7
2	D	301	NAG	C3-C2-N2-C7
2	F	301	NAG	C1-C2-N2-C7
3	B	301	7A9	C20-C15-N05-C04
3	C	302	7A9	C16-C15-N05-C06
3	C	302	7A9	C16-C15-N05-C04
3	C	302	7A9	C20-C15-N05-C04
3	D	302	7A9	C16-C15-N05-C04
3	D	302	7A9	C20-C15-N05-C04
3	E	302	7A9	C16-C15-N05-C04
3	E	302	7A9	C20-C15-N05-C04
3	G	302	7A9	C16-C15-N05-C04
3	G	302	7A9	C20-C15-N05-C04
3	H	301	7A9	C16-C15-N05-C04
3	H	301	7A9	C20-C15-N05-C04
2	D	301	NAG	O5-C5-C6-O6
2	J	301	NAG	O5-C5-C6-O6
2	F	301	NAG	O5-C5-C6-O6
2	D	301	NAG	C4-C5-C6-O6
2	J	301	NAG	C4-C5-C6-O6
2	F	301	NAG	C4-C5-C6-O6
2	F	301	NAG	C8-C7-N2-C2
2	F	301	NAG	O7-C7-N2-C2
3	B	301	7A9	C16-C15-N05-C04
2	I	301	NAG	O5-C5-C6-O6
2	A	301	NAG	O5-C5-C6-O6
2	C	301	NAG	O5-C5-C6-O6
3	D	302	7A9	C16-C15-N05-C06
3	H	301	7A9	C16-C15-N05-C06
3	J	302	7A9	C20-C15-N05-C04
3	J	302	7A9	C16-C15-N05-C04
2	J	301	NAG	C1-C2-N2-C7
3	C	302	7A9	C20-C15-N05-C06

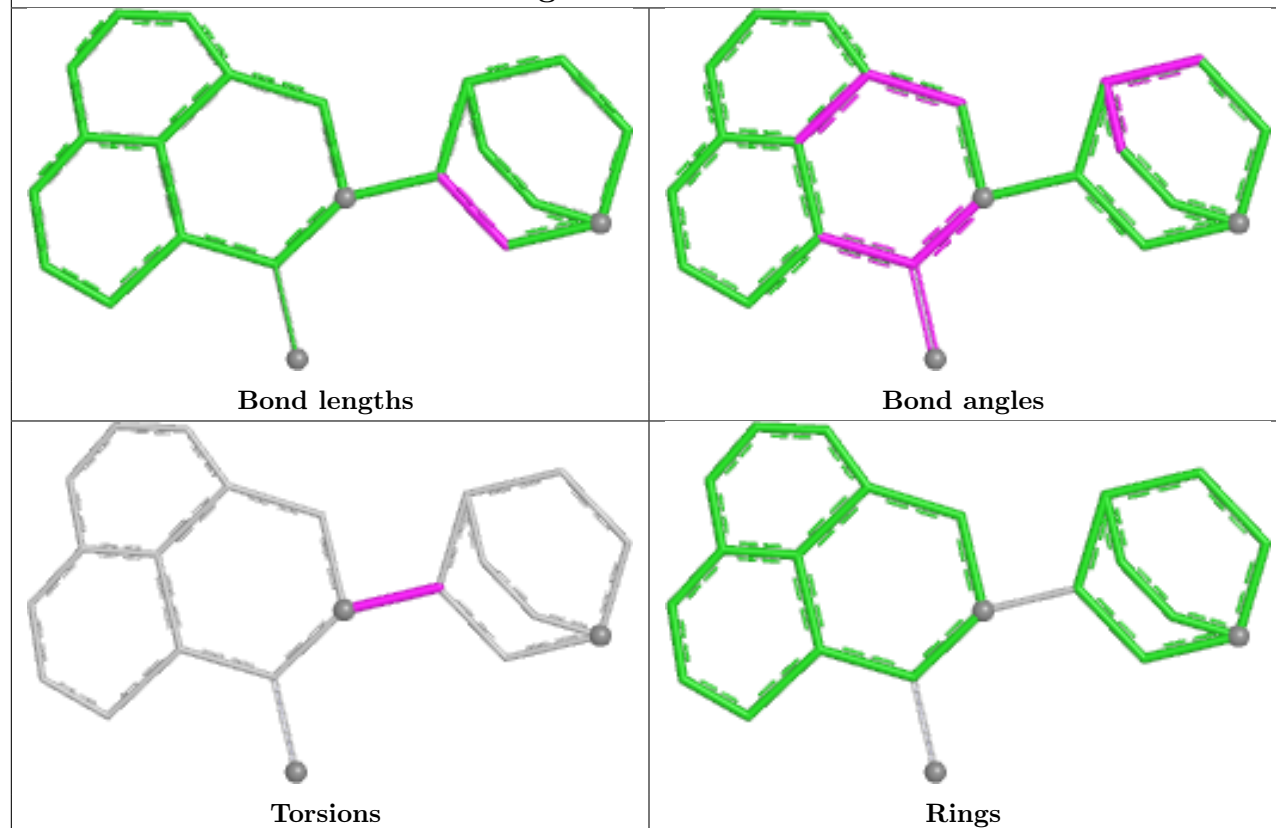
There are no ring outliers.

8 monomers are involved in 14 short contacts:

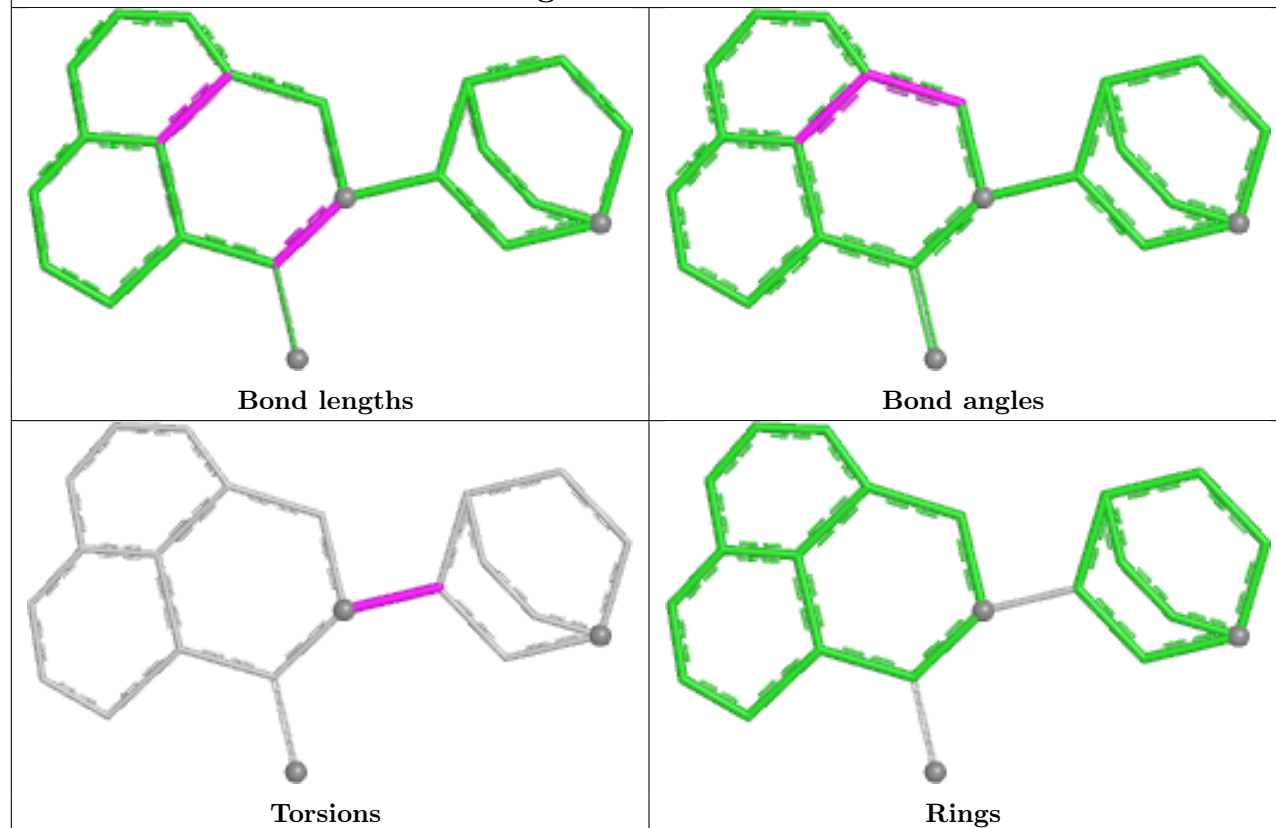
Mol	Chain	Res	Type	Clashes	Symm-Clashes
2	I	301	NAG	3	0
2	D	301	NAG	1	0
2	F	301	NAG	2	0
2	G	301	NAG	1	0
3	G	302	7A9	2	0
2	E	301	NAG	1	0
2	C	301	NAG	1	0
2	A	301	NAG	3	0

The following is a two-dimensional graphical depiction of Mogul quality analysis of bond lengths, bond angles, torsion angles, and ring geometry for all instances of the Ligand of Interest. In addition, ligands with molecular weight > 250 and outliers as shown on the validation Tables will also be included. For torsion angles, if less than 5% of the Mogul distribution of torsion angles is within 10 degrees of the torsion angle in question, then that torsion angle is considered an outlier. Any bond that is central to one or more torsion angles identified as an outlier by Mogul will be highlighted in the graph. For rings, the root-mean-square deviation (RMSD) between the ring in question and similar rings identified by Mogul is calculated over all ring torsion angles. If the average RMSD is greater than 60 degrees and the minimal RMSD between the ring in question and any Mogul-identified rings is also greater than 60 degrees, then that ring is considered an outlier. The outliers are highlighted in purple. The color gray indicates Mogul did not find sufficient equivalents in the CSD to analyse the geometry.

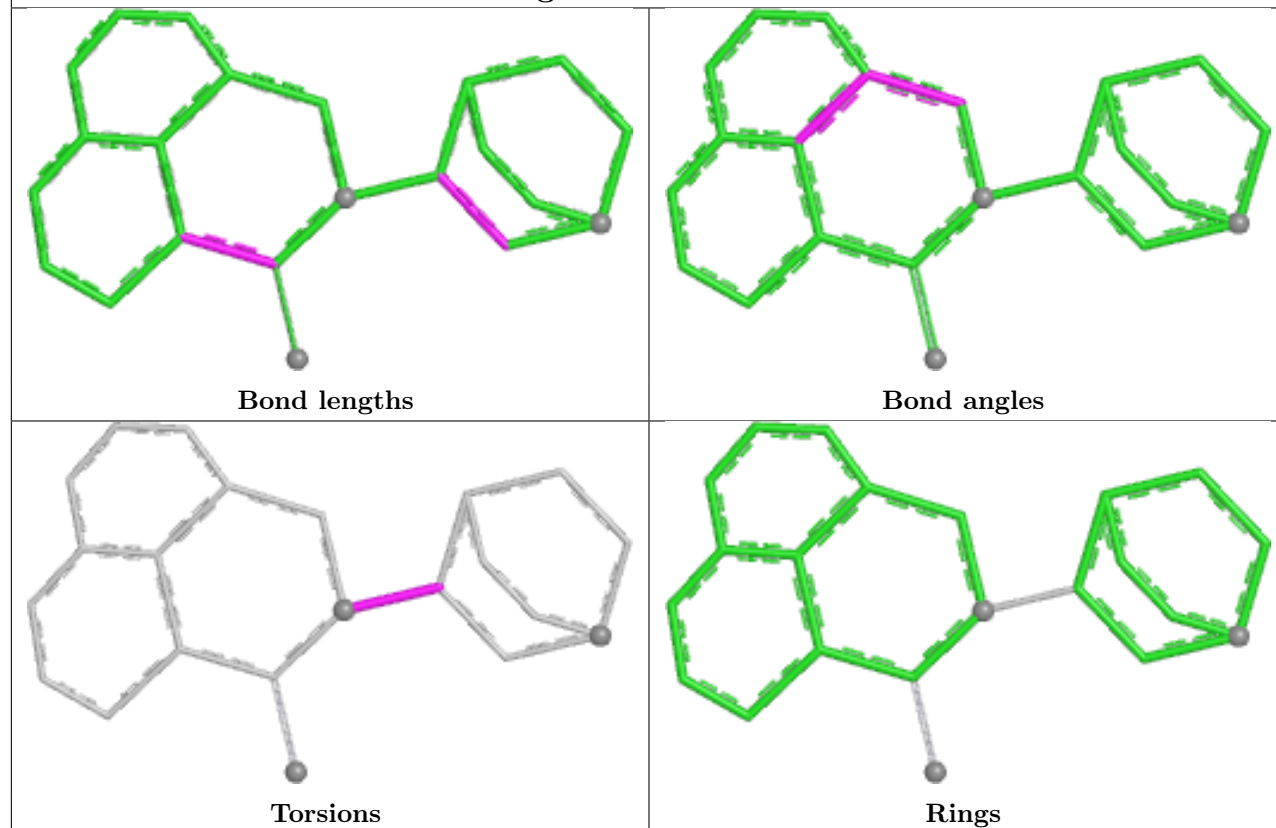
Ligand 7A9 B 301



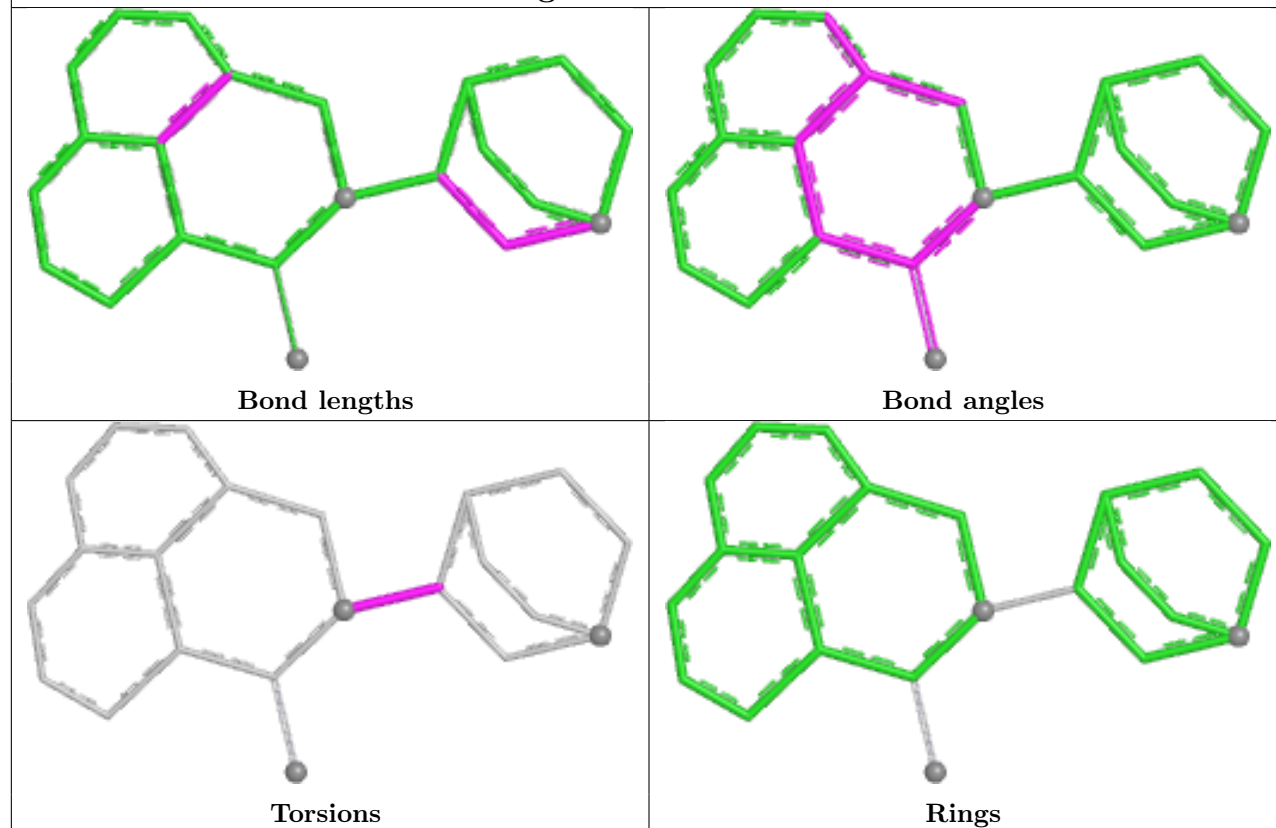
Ligand 7A9 D 302



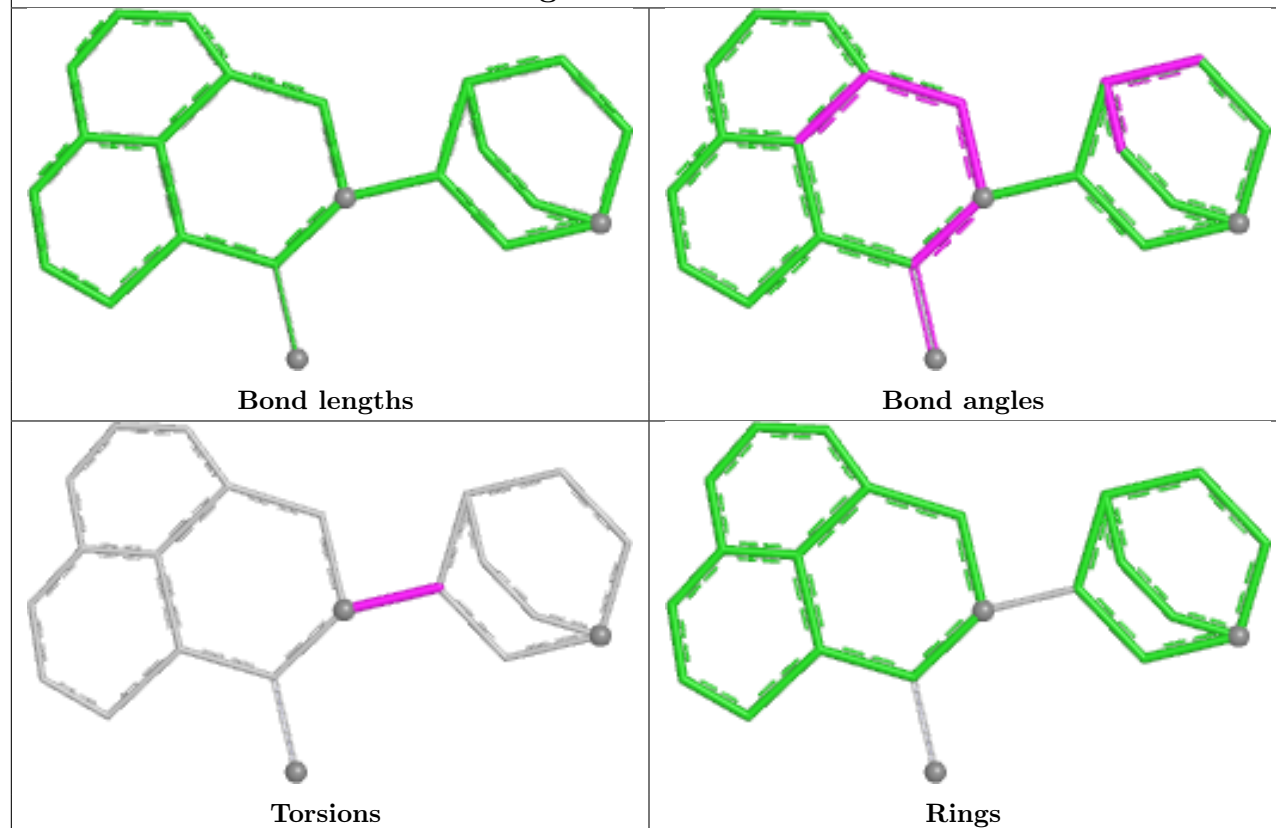
Ligand 7A9 H 301



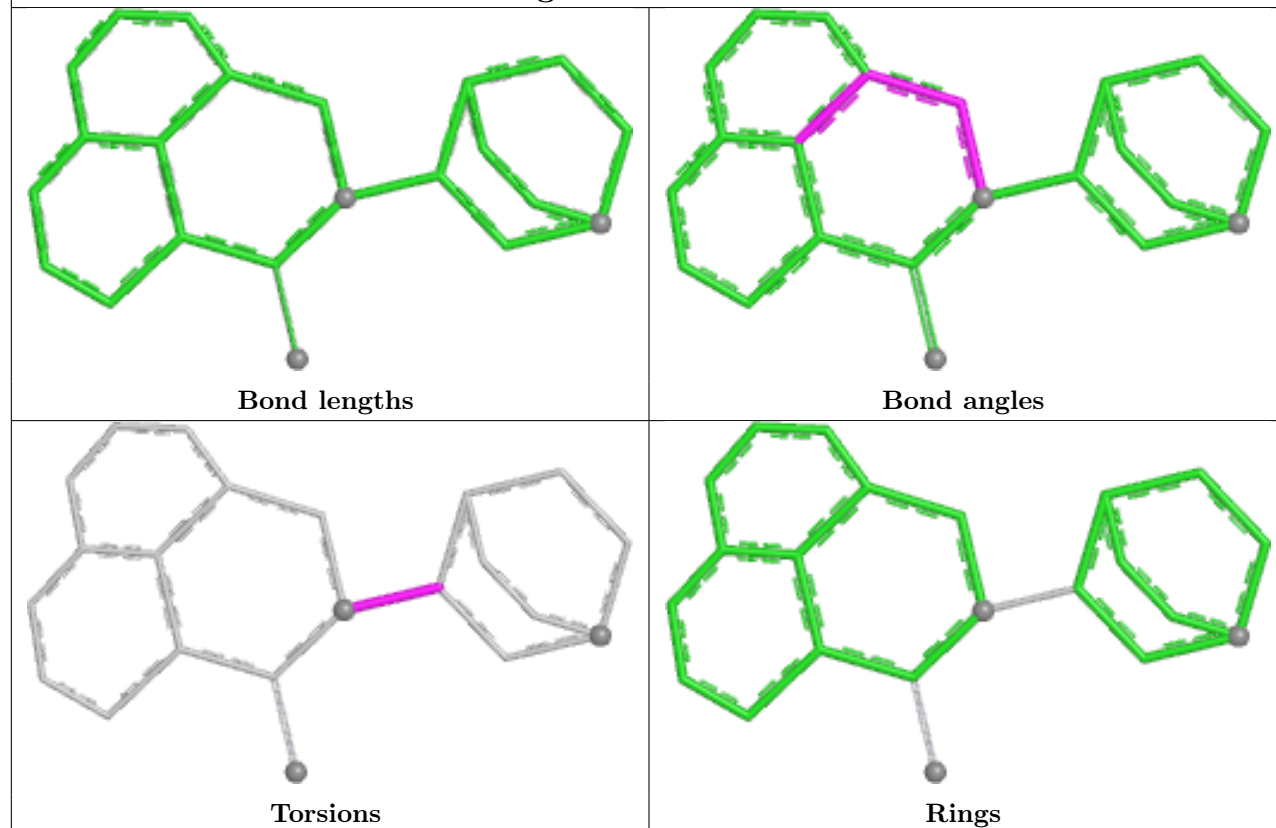
Ligand 7A9 C 302

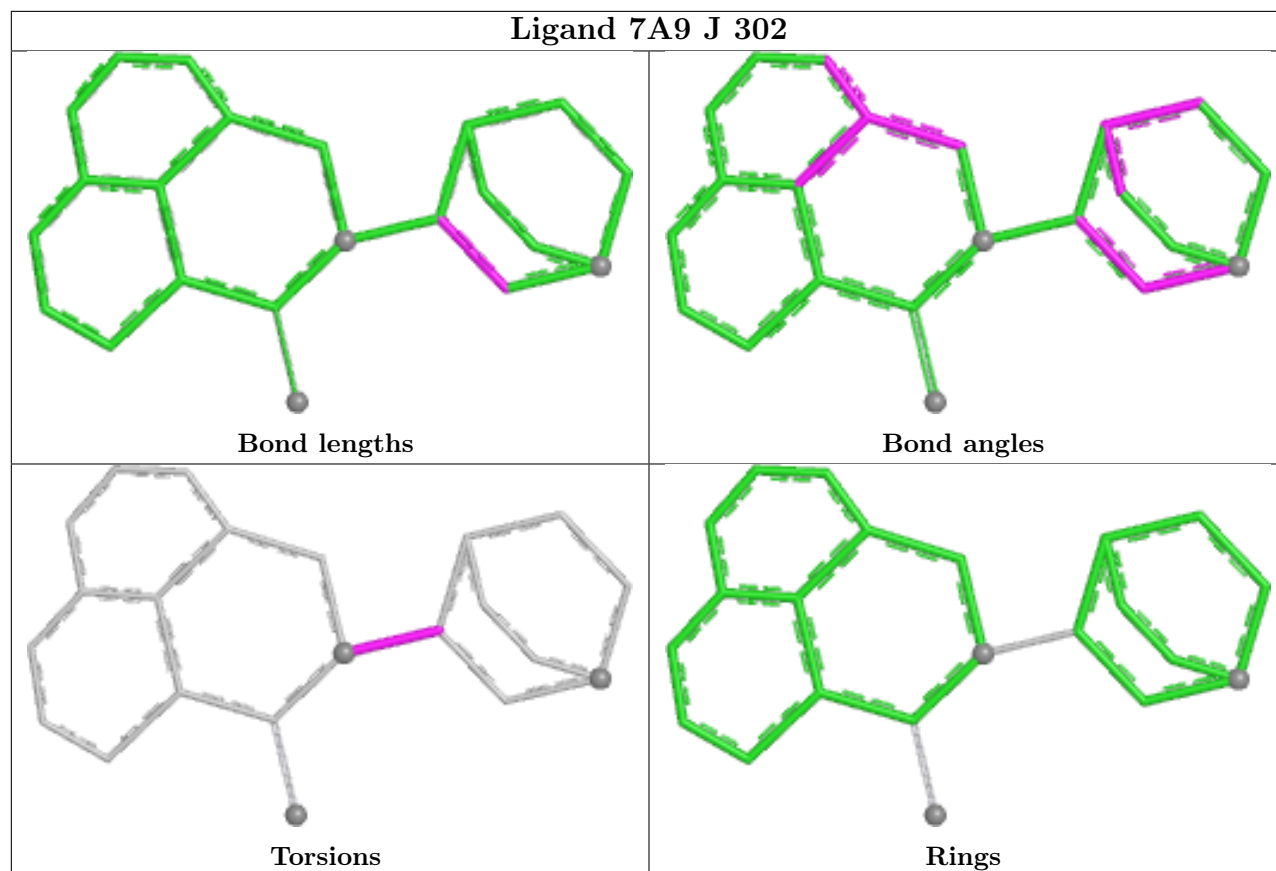


Ligand 7A9 E 302



Ligand 7A9 G 302





5.7 Other polymers [i](#)

There are no such residues in this entry.

5.8 Polymer linkage issues [i](#)

There are no chain breaks in this entry.

6 Fit of model and data ⓘ

6.1 Protein, DNA and RNA chains ⓘ

In the following table, the column labelled ‘#RSRZ > 2’ contains the number (and percentage) of RSRZ outliers, followed by percent RSRZ outliers for the chain as percentile scores relative to all X-ray entries and entries of similar resolution. The OWAB column contains the minimum, median, 95th percentile and maximum values of the occupancy-weighted average B-factor per residue. The column labelled ‘Q < 0.9’ lists the number of (and percentage) of residues with an average occupancy less than 0.9.

Mol	Chain	Analysed	<RSRZ>	#RSRZ>2	OWAB(Å ²)	Q<0.9
1	A	205/242 (84%)	0.43	5 (2%) 59 65	35, 51, 76, 96	0
1	B	205/242 (84%)	0.46	4 (1%) 65 70	38, 52, 80, 99	0
1	C	205/242 (84%)	0.44	5 (2%) 59 65	37, 55, 78, 113	0
1	D	205/242 (84%)	0.35	6 (2%) 53 60	35, 50, 72, 104	0
1	E	205/242 (84%)	0.30	5 (2%) 59 65	32, 46, 68, 94	0
1	F	205/242 (84%)	0.43	4 (1%) 65 70	36, 51, 80, 94	0
1	G	205/242 (84%)	0.55	8 (3%) 43 49	40, 59, 88, 108	0
1	H	205/242 (84%)	0.63	6 (2%) 53 60	41, 58, 83, 102	0
1	I	205/242 (84%)	0.52	10 (4%) 35 41	40, 56, 84, 105	0
1	J	205/242 (84%)	0.43	4 (1%) 65 70	36, 52, 79, 99	0
All	All	2050/2420 (84%)	0.45	57 (2%) 55 61	32, 53, 80, 113	0

All (57) RSRZ outliers are listed below:

Mol	Chain	Res	Type	RSRZ
1	G	188	CYS	3.9
1	A	205	ARG	3.5
1	A	188	CYS	3.5
1	H	16	PRO	3.3
1	J	188	CYS	3.2
1	I	189	CYS	3.2
1	B	205	ARG	3.1
1	I	190	PRO	3.1
1	I	68	ASN	3.1
1	F	188	CYS	3.1
1	J	15	SER	3.0
1	I	16	PRO	3.0
1	I	72	ASN	3.0

Continued on next page...

Continued from previous page...

Mol	Chain	Res	Type	RSRZ
1	E	205	ARG	2.9
1	D	188	CYS	2.9
1	H	188	CYS	2.9
1	G	205	ARG	2.8
1	D	189	CYS	2.8
1	H	189	CYS	2.8
1	J	205	ARG	2.8
1	G	189	CYS	2.7
1	I	205	ARG	2.7
1	G	150	PHE	2.7
1	I	188	CYS	2.6
1	H	205	ARG	2.5
1	B	188	CYS	2.5
1	C	189	CYS	2.5
1	E	188	CYS	2.5
1	D	15	SER	2.5
1	D	205	ARG	2.4
1	A	15	SER	2.3
1	C	15	SER	2.3
1	E	1	GLN	2.3
1	C	188	CYS	2.3
1	B	190	PRO	2.3
1	D	159	ASP	2.3
1	G	157	ASP	2.2
1	D	23	LYS	2.2
1	G	187	SER	2.2
1	F	193	TYR	2.2
1	F	189	CYS	2.2
1	G	185	HIS	2.1
1	I	138	CYS	2.1
1	C	18	TYR	2.1
1	F	16	PRO	2.1
1	E	138	CYS	2.1
1	H	72	ASN	2.1
1	I	15	SER	2.1
1	J	189	CYS	2.1
1	C	23	LYS	2.1
1	A	1	GLN	2.1
1	A	186	TYR	2.1
1	G	129	GLY	2.1
1	B	138	CYS	2.0
1	E	189	CYS	2.0

Continued on next page...

Continued from previous page...

Mol	Chain	Res	Type	RSRZ
1	H	183	VAL	2.0
1	I	23	LYS	2.0

6.2 Non-standard residues in protein, DNA, RNA chains [i](#)

There are no non-standard protein/DNA/RNA residues in this entry.

6.3 Carbohydrates [i](#)

There are no oligosaccharides in this entry.

6.4 Ligands [i](#)

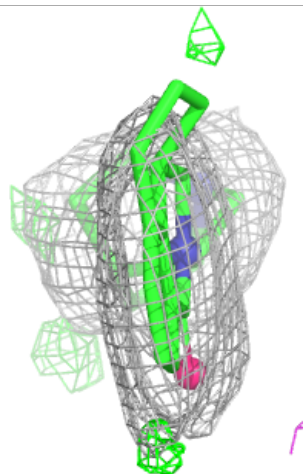
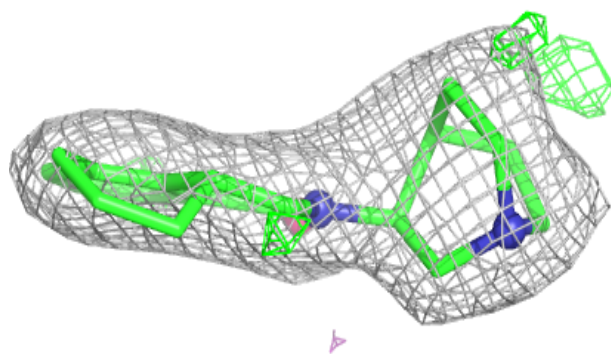
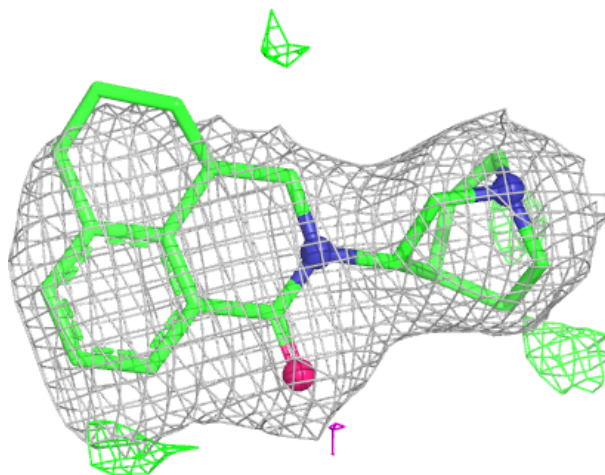
In the following table, the Atoms column lists the number of modelled atoms in the group and the number defined in the chemical component dictionary. The B-factors column lists the minimum, median, 95th percentile and maximum values of B factors of atoms in the group. The column labelled 'Q<0.9' lists the number of atoms with occupancy less than 0.9.

Mol	Type	Chain	Res	Atoms	RSCC	RSR	B-factors(\AA^2)	Q<0.9
2	NAG	G	301	14/15	0.47	0.23	84,122,135,135	0
2	NAG	C	301	14/15	0.53	0.19	74,128,148,158	0
2	NAG	J	301	14/15	0.57	0.23	91,132,161,163	0
2	NAG	A	301	14/15	0.61	0.20	73,112,132,138	0
2	NAG	E	301	14/15	0.64	0.19	65,94,104,106	0
2	NAG	D	301	14/15	0.74	0.16	66,95,114,127	0
2	NAG	I	301	14/15	0.81	0.14	52,58,69,80	0
2	NAG	F	301	14/15	0.87	0.15	46,61,68,85	0
3	7A9	B	301	22/22	0.87	0.15	52,65,81,85	0
3	7A9	J	302	22/22	0.89	0.14	47,58,78,88	0
3	7A9	G	302	22/22	0.90	0.13	46,57,61,66	0
3	7A9	H	301	22/22	0.90	0.13	51,60,69,72	0
3	7A9	E	302	22/22	0.90	0.11	33,47,52,57	0
3	7A9	D	302	22/22	0.92	0.09	26,39,48,50	0
3	7A9	C	302	22/22	0.93	0.10	30,41,52,53	0

The following is a graphical depiction of the model fit to experimental electron density of all instances of the Ligand of Interest. In addition, ligands with molecular weight > 250 and outliers as shown on the geometry validation Tables will also be included. Each fit is shown from different orientation to approximate a three-dimensional view.

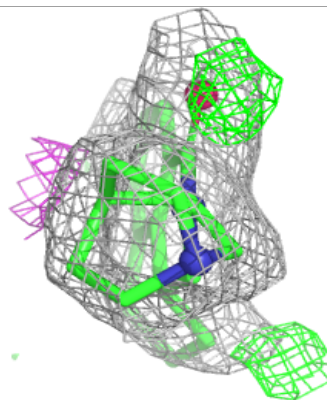
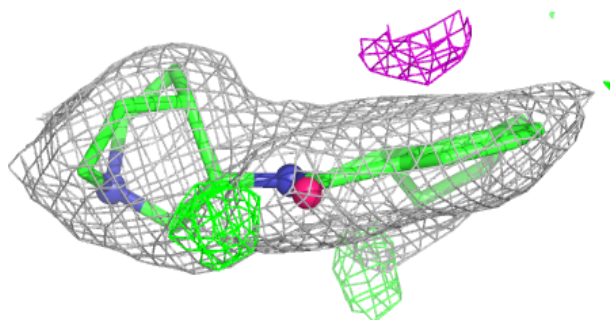
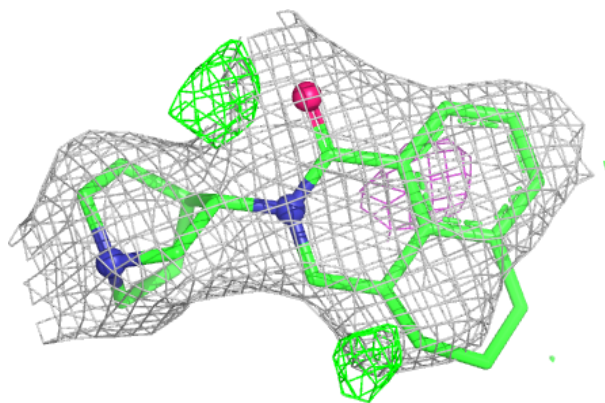
Electron density around 7A9 B 301:

$2mF_o-DF_c$ (at 0.7 rmsd) in gray
 mF_o-DF_c (at 3 rmsd) in purple (negative)
and green (positive)



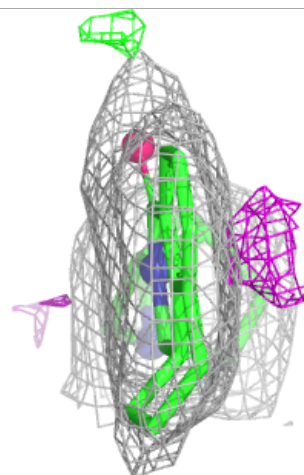
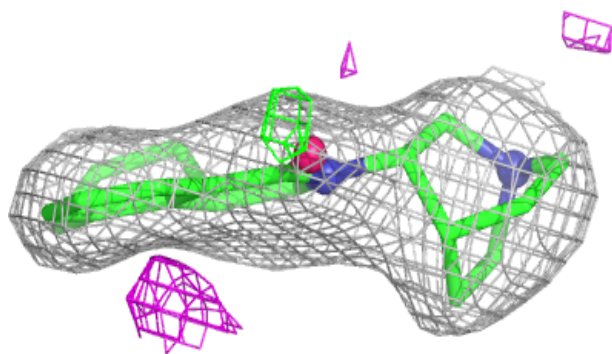
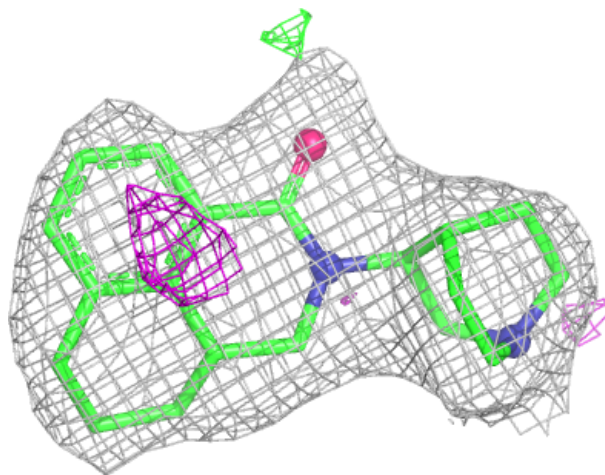
Electron density around 7A9 J 302:

$2mF_o-DF_c$ (at 0.7 rmsd) in gray
 mF_o-DF_c (at 3 rmsd) in purple (negative)
and green (positive)



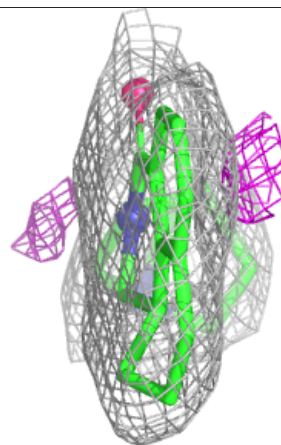
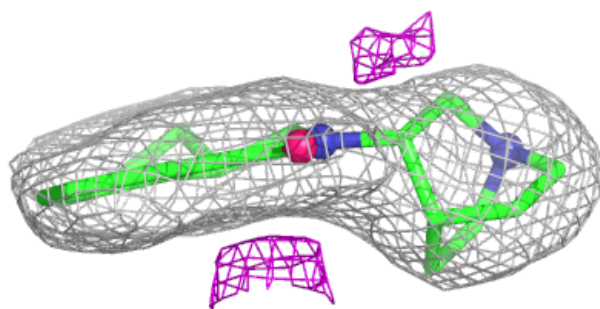
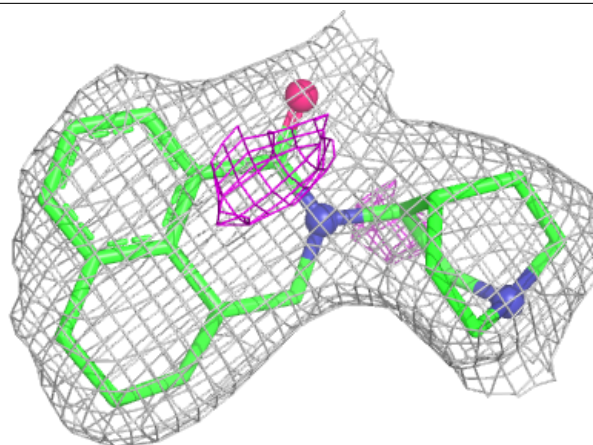
Electron density around 7A9 G 302:

$2mF_o-DF_c$ (at 0.7 rmsd) in gray
 mF_o-DF_c (at 3 rmsd) in purple (negative)
and green (positive)



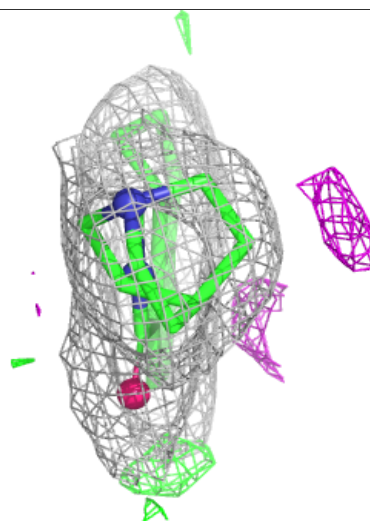
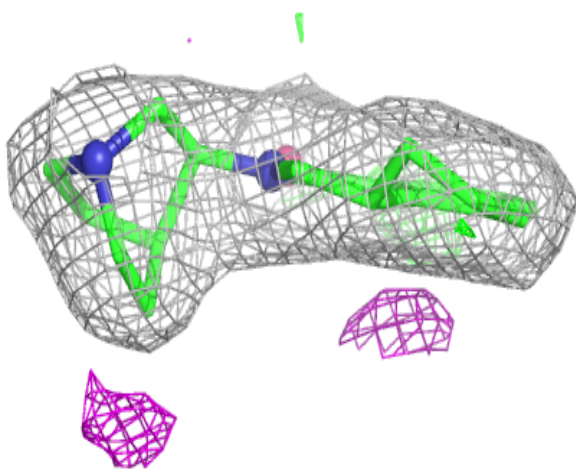
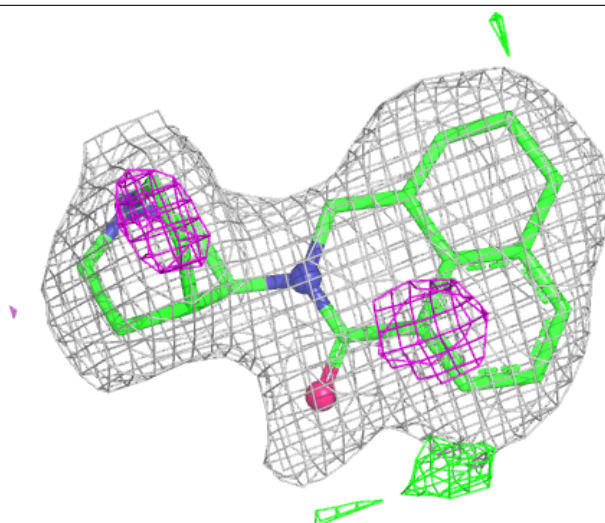
Electron density around 7A9 H 301:

$2mF_o-DF_c$ (at 0.7 rmsd) in gray
 mF_o-DF_c (at 3 rmsd) in purple (negative)
and green (positive)



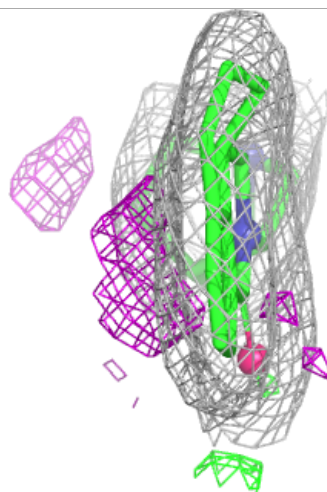
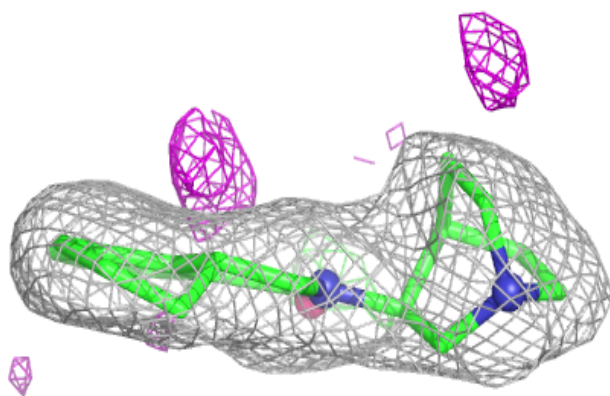
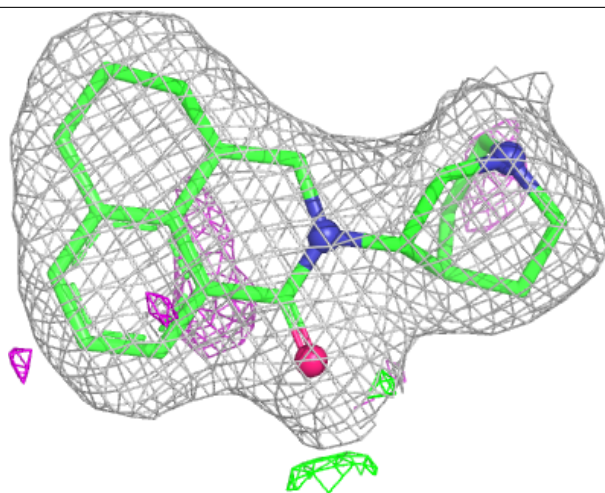
Electron density around 7A9 E 302:

$2mF_o-DF_c$ (at 0.7 rmsd) in gray
 mF_o-DF_c (at 3 rmsd) in purple (negative)
and green (positive)



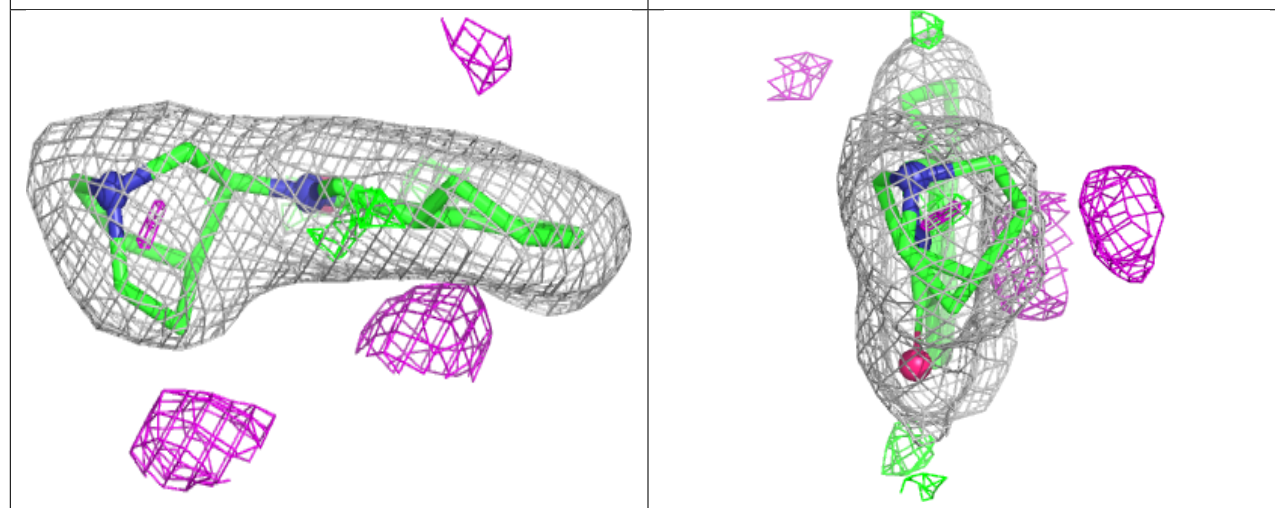
Electron density around 7A9 D 302:

$2mF_o-DF_c$ (at 0.7 rmsd) in gray
 mF_o-DF_c (at 3 rmsd) in purple (negative)
and green (positive)



Electron density around 7A9 C 302:

$2mF_o-DF_c$ (at 0.7 rmsd) in gray
 mF_o-DF_c (at 3 rmsd) in purple (negative)
and green (positive)



6.5 Other polymers ⓘ

There are no such residues in this entry.