



# Full wwPDB X-ray Structure Validation Report ⓘ

Mar 20, 2026 – 10:18 AM UTC

PDB ID : 5MU6 / pdb\_00005mu6  
Title : Human N-myristoyltransferase (NMT1) with Myristoyl-CoA and IMP-1088 inhibitor bound  
Authors : Perez-Dorado, I.; Bell, A.S.; Tate, E.W.  
Deposited on : 2017-01-12  
Resolution : 1.88 Å(reported)

This is a Full wwPDB X-ray Structure Validation Report for a publicly released PDB entry.

We welcome your comments at [validation@mail.wwpdb.org](mailto:validation@mail.wwpdb.org)

A user guide is available at

<https://www.wwpdb.org/validation/2017/XrayValidationReportHelp>

with specific help available everywhere you see the ⓘ symbol.

The types of validation reports are described at

<http://www.wwpdb.org/validation/2017/FAQs#types>.

---

The following versions of software and data (see [references ⓘ](#)) were used in the production of this report:

MolProbity	:	4-5-2 with Phenix2.0
Mogul	:	2022.3.0, CSD as543be (2022)
Xtriage (Phenix)	:	2.0
EDS	:	3.0
Buster-report	:	wwPDB partial adaption of 1.1.7 (2018)
Percentile statistics	:	20250101.v01 (using entries in the PDB archive January 1st 2025)
CCP4	:	9.0.010 (Gargrove)
Density-Fitness	:	1.0.12
Ideal geometry (proteins)	:	Engh & Huber (2001)
Ideal geometry (DNA, RNA)	:	Parkinson et al. (1996)
Validation Pipeline (wwPDB-VP)	:	2.49

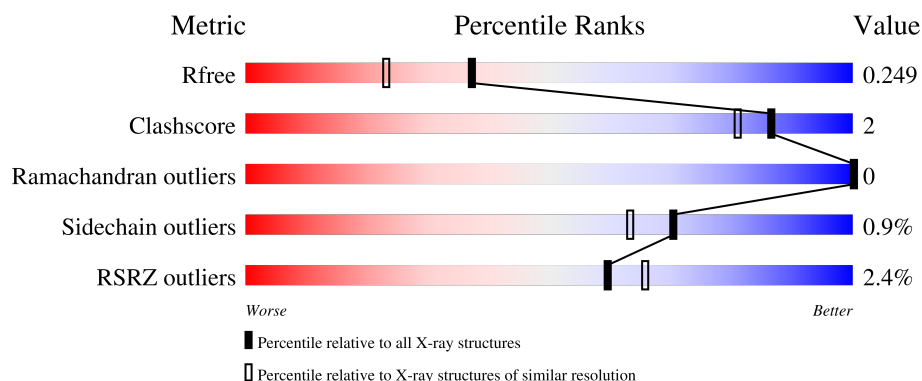
# 1 Overall quality at a glance

The following experimental techniques were used to determine the structure:

*X-RAY DIFFRACTION*

The reported resolution of this entry is 1.88 Å.

Percentile scores (ranging between 0-100) for global validation metrics of the entry are shown in the following graphic. The table shows the number of entries on which the scores are based.



Metric	Whole archive (#Entries)	Similar resolution (#Entries, resolution range(Å))
$R_{free}$	180053	1220 (1.88-1.88)
Clashscore	190562	1234 (1.88-1.88)
Ramachandran outliers	187476	1222 (1.88-1.88)
Sidechain outliers	187428	1222 (1.88-1.88)
RSRZ outliers	180081	1220 (1.88-1.88)

The table below summarises the geometric issues observed across the polymeric chains and their fit to the electron density. The red, orange, yellow and green segments of the lower bar indicate the fraction of residues that contain outliers for  $\geq 3$ , 2, 1 and 0 types of geometric quality criteria respectively. A grey segment represents the fraction of residues that are not modelled. The numeric value for each fraction is indicated below the corresponding segment, with a dot representing fractions  $\leq 5\%$ . The upper red bar (where present) indicates the fraction of residues that have poor fit to the electron density. The numeric value is given above the bar.

Mol	Chain	Length	Quality of chain
1	A	391	<div> <div>2%</div> <div> <div></div> <div>91%</div> <div>7%</div> </div> </div>
1	B	391	<div> <div>2%</div> <div> <div></div> <div>92%</div> <div>...</div> </div> </div>

## 2 Entry composition [i](#)

There are 6 unique types of molecules in this entry. The entry contains 6941 atoms, of which 0 are hydrogens and 0 are deuteriums.

In the tables below, the ZeroOcc column contains the number of atoms modelled with zero occupancy, the AltConf column contains the number of residues with at least one atom in alternate conformation and the Trace column contains the number of residues modelled with at most 2 atoms.

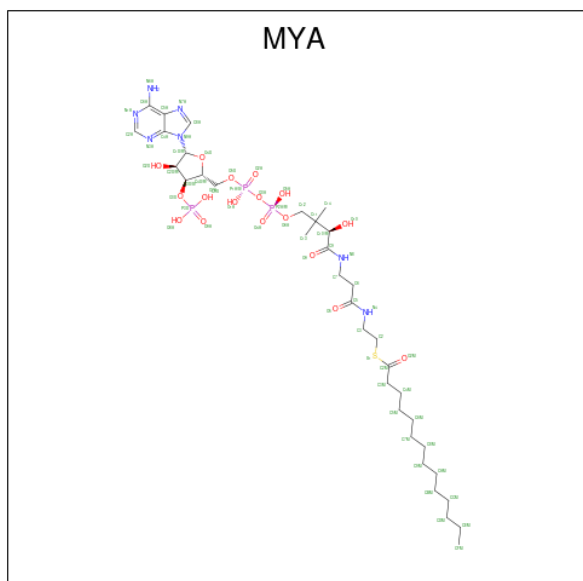
- Molecule 1 is a protein called Glycylpeptide N-tetradecanoyltransferase 1.

Mol	Chain	Residues	Atoms					ZeroOcc	AltConf	Trace
1	A	382	Total	C	N	O	S	0	1	0
			3139	2033	533	557	16			
1	B	377	Total	C	N	O	S	0	6	0
			3128	2030	528	553	17			

There are 6 discrepancies between the modelled and reference sequences:

Chain	Residue	Modelled	Actual	Comment	Reference
A	106	GLY	-	expression tag	UNP P30419
A	107	PRO	-	expression tag	UNP P30419
A	108	HIS	-	expression tag	UNP P30419
B	106	GLY	-	expression tag	UNP P30419
B	107	PRO	-	expression tag	UNP P30419
B	108	HIS	-	expression tag	UNP P30419

- Molecule 2 is TETRADECANOYL-COA (CCD ID: MYA) (formula:  $C_{35}H_{62}N_7O_{17}P_3S$ ).

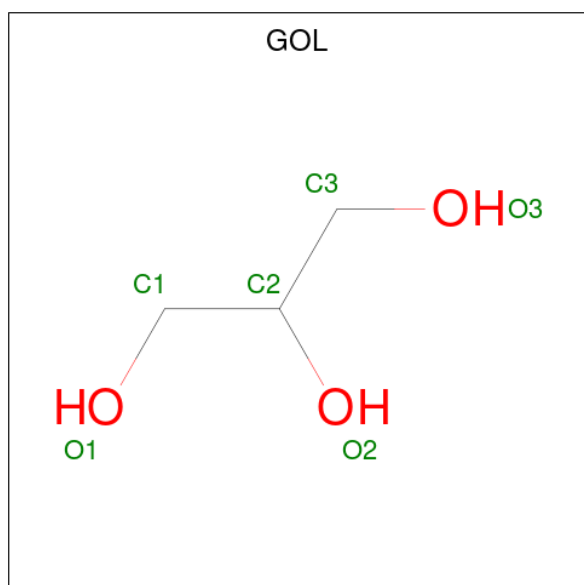


Mol	Chain	Residues	Atoms					ZeroOcc	AltConf
2	A	1	Total	C	N	O	P	S	
			63	35	7	17	3	1	0
2	B	1	Total	C	N	O	P	S	
			63	35	7	17	3	1	0

- Molecule 3 is MAGNESIUM ION (CCD ID: MG) (formula: Mg).

Mol	Chain	Residues	Atoms		ZeroOcc	AltConf
3	A	1	Total	Mg	0	0
			1	1		
3	B	1	Total	Mg	0	0
			1	1		

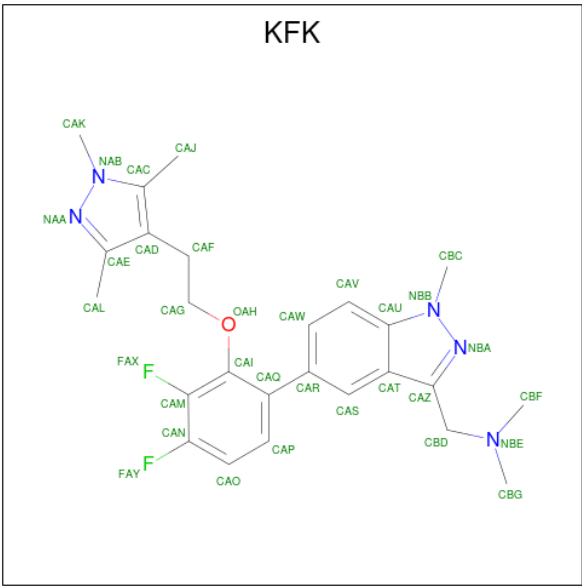
- Molecule 4 is GLYCEROL (CCD ID: GOL) (formula: C<sub>3</sub>H<sub>8</sub>O<sub>3</sub>).



Mol	Chain	Residues	Atoms			ZeroOcc	AltConf
4	A	1	Total	C	O		
			6	3	3	0	0
4	A	1	Total	C	O		
			6	3	3	0	0
4	B	1	Total	C	O		
			6	3	3	0	0
4	B	1	Total	C	O		
			6	3	3	0	0

- Molecule 5 is 1-[5-[3,4-bis(fluoranyl)-2-[2-(1,3,5-trimethylpyrazol-4-yl)ethoxy]phenyl]-1-methyl-indazol-3-yl]- {N}, {N}-dimethyl-methanamine (CCD ID: KFK) (formula:

C<sub>25</sub>H<sub>29</sub>F<sub>2</sub>N<sub>5</sub>O).



Mol	Chain	Residues	Atoms					ZeroOcc	AltConf
5	A	1	Total	C	F	N	O	0	0
			33	25	2	5	1		
5	B	1	Total	C	F	N	O	0	0
			33	25	2	5	1		

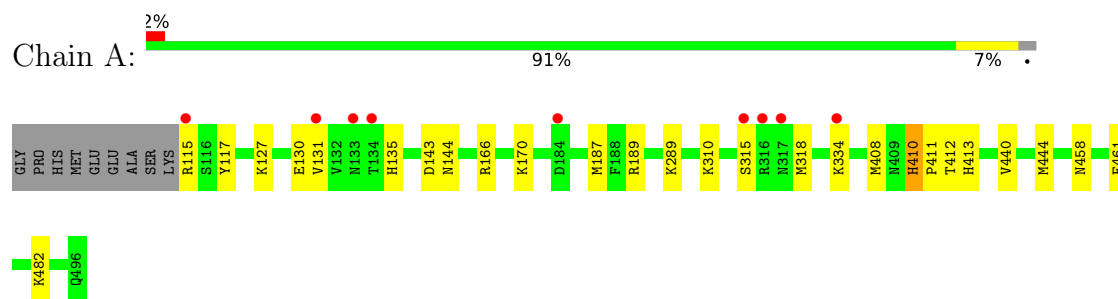
- Molecule 6 is water.

Mol	Chain	Residues	Atoms		ZeroOcc	AltConf
6	A	228	Total	O	0	0
			228	228		
6	B	228	Total	O	0	0
			228	228		

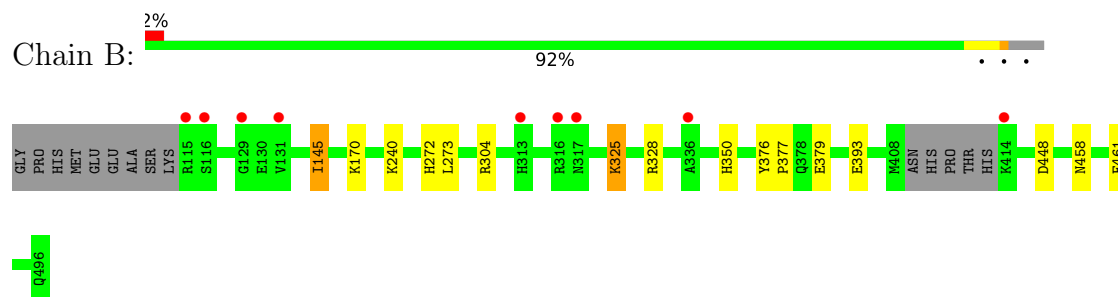
### 3 Residue-property plots [i](#)

These plots are drawn for all protein, RNA, DNA and oligosaccharide chains in the entry. The first graphic for a chain summarises the proportions of the various outlier classes displayed in the second graphic. The second graphic shows the sequence view annotated by issues in geometry and electron density. Residues are color-coded according to the number of geometric quality criteria for which they contain at least one outlier: green = 0, yellow = 1, orange = 2 and red = 3 or more. A red dot above a residue indicates a poor fit to the electron density ( $RSRZ > 2$ ). Stretches of 2 or more consecutive residues without any outlier are shown as a green connector. Residues present in the sample, but not in the model, are shown in grey.

- Molecule 1: Glycylpeptide N-tetradecanoyltransferase 1



- Molecule 1: Glycylpeptide N-tetradecanoyltransferase 1



## 4 Data and refinement statistics

Property	Value	Source
Space group	P 21 21 2	Depositor
Cell constants a, b, c, $\alpha$ , $\beta$ , $\gamma$	78.73Å 180.73Å 58.99Å 90.00° 90.00° 90.00°	Depositor
Resolution (Å)	72.18 – 1.88 72.18 – 1.88	Depositor EDS
% Data completeness (in resolution range)	99.8 (72.18-1.88) 99.9 (72.18-1.88)	Depositor EDS
$R_{merge}$	0.25	Depositor
$R_{sym}$	(Not available)	Depositor
$\langle I/\sigma(I) \rangle$ <sup>1</sup>	1.69 (at 1.88Å)	Xtriage
Refinement program	REFMAC 5.8.0073, PHENIX 1.8.4_1496	Depositor
R, $R_{free}$	0.204 , 0.247 0.210 , 0.249	Depositor DCC
$R_{free}$ test set	3450 reflections (4.97%)	wwPDB-VP
Wilson B-factor (Å <sup>2</sup> )	17.1	Xtriage
Anisotropy	0.992	Xtriage
Bulk solvent $k_{sol}$ (e/Å <sup>3</sup> ), $B_{sol}$ (Å <sup>2</sup> )	0.35 , 37.8	EDS
L-test for twinning <sup>2</sup>	$\langle  L  \rangle = 0.48$ , $\langle L^2 \rangle = 0.31$	Xtriage
Estimated twinning fraction	No twinning to report.	Xtriage
$F_o, F_c$ correlation	0.95	EDS
Total number of atoms	6941	wwPDB-VP
Average B, all atoms (Å <sup>2</sup> )	14.0	wwPDB-VP

Xtriage's analysis on translational NCS is as follows: *The largest off-origin peak in the Patterson function is 12.81% of the height of the origin peak. No significant pseudotranslation is detected.*

<sup>1</sup>Intensities estimated from amplitudes.

<sup>2</sup>Theoretical values of  $\langle |L| \rangle$ ,  $\langle L^2 \rangle$  for acentric reflections are 0.5, 0.333 respectively for untwinned datasets, and 0.375, 0.2 for perfectly twinned datasets.

## 5 Model quality [i](#)

### 5.1 Standard geometry [i](#)

Bond lengths and bond angles in the following residue types are not validated in this section: MYA, MG, GOL, KFK

The Z score for a bond length (or angle) is the number of standard deviations the observed value is removed from the expected value. A bond length (or angle) with  $|Z| > 5$  is considered an outlier worth inspection. RMSZ is the root-mean-square of all Z scores of the bond lengths (or angles).

Mol	Chain	Bond lengths		Bond angles	
		RMSZ	$\# Z  > 5$	RMSZ	$\# Z  > 5$
1	A	0.59	0/3231	0.77	2/4389 (0.0%)
1	B	0.58	0/3228	0.77	0/4381
All	All	0.58	0/6459	0.77	2/8770 (0.0%)

There are no bond length outliers.

All (2) bond angle outliers are listed below:

Mol	Chain	Res	Type	Atoms	Z	Observed(°)	Ideal(°)
1	A	410	HIS	CA-C-N	5.01	124.79	119.28
1	A	410	HIS	C-N-CA	5.01	124.79	119.28

There are no chirality outliers.

There are no planarity outliers.

### 5.2 Too-close contacts [i](#)

In the following table, the Non-H and H(model) columns list the number of non-hydrogen atoms and hydrogen atoms in the chain respectively. The H(added) column lists the number of hydrogen atoms added and optimized by MolProbity. The Clashes column lists the number of clashes within the asymmetric unit, whereas Symm-Clashes lists symmetry-related clashes.

Mol	Chain	Non-H	H(model)	H(added)	Clashes	Symm-Clashes
1	A	3139	0	3138	16	0
1	B	3128	0	3150	12	0
2	A	63	0	58	0	0
2	B	63	0	58	0	0
3	A	1	0	0	0	0
3	B	1	0	0	0	0
4	A	12	0	16	0	0

*Continued on next page...*



*Continued from previous page...*

Mol	Chain	Non-H	H(model)	H(added)	Clashes	Symm-Clashes
4	B	12	0	16	0	0
5	A	33	0	0	0	0
5	B	33	0	0	0	0
6	A	228	0	0	1	0
6	B	228	0	0	3	0
All	All	6941	0	6436	27	0

The all-atom clashscore is defined as the number of clashes found per 1000 atoms (including hydrogen atoms). The all-atom clashscore for this structure is 2.

All (27) close contacts within the same asymmetric unit are listed below, sorted by their clash magnitude.

Atom-1	Atom-2	Interatomic distance (Å)	Clash overlap (Å)
1:B:325:LYS:HG3	1:B:328:ARG:HH12	1.47	0.79
1:B:393:GLU:OE2	6:B:601:HOH:O	2.03	0.76
1:B:240:LYS:NZ	6:B:602:HOH:O	2.15	0.75
1:A:410:HIS:HD2	1:A:412:THR:H	1.43	0.67
1:A:127:LYS:N	1:A:130:GLU:OE1	2.28	0.64
1:A:187:MET:HE1	1:A:310:LYS:HB2	1.78	0.63
1:A:166:ARG:NH1	6:A:604:HOH:O	2.31	0.60
1:A:130:GLU:O	1:A:289:LYS:NZ	2.33	0.59
1:B:145[B]:ILE:HD12	1:B:272:HIS:HB3	1.86	0.58
1:B:325:LYS:HG3	1:B:328:ARG:NH1	2.18	0.55
1:A:143:ASP:O	1:B:350:HIS:ND1	2.37	0.55
1:B:448:ASP:OD1	6:B:603:HOH:O	2.19	0.52
1:B:145[A]:ILE:HD11	1:B:273:LEU:HG	1.92	0.52
1:A:410:HIS:CD2	1:A:413:HIS:H	2.29	0.51
1:A:458:ASN:HA	1:A:461:PHE:CE2	2.46	0.51
1:A:115:ARG:NH2	1:A:117:TYR:OH	2.44	0.51
1:A:410:HIS:CD2	1:A:412:THR:H	2.27	0.50
1:B:458:ASN:HA	1:B:461:PHE:CE2	2.52	0.45
1:A:135:HIS:HA	1:A:482:LYS:O	2.19	0.43
1:A:189:ARG:NH1	1:A:408:MET:SD	2.91	0.43
1:A:315:SER:HB3	1:A:318:MET:HB2	2.01	0.43
1:A:410:HIS:HA	1:A:411:PRO:HD3	1.77	0.42
1:B:170:LYS:HD3	1:B:170:LYS:HA	1.82	0.42
1:B:376:TYR:HA	1:B:377:PRO:HD3	1.92	0.41
1:B:379:GLU:O	1:B:379:GLU:HG3	2.21	0.40
1:A:440:VAL:O	1:A:444:MET:HG3	2.21	0.40
1:A:144:ASN:N	1:A:144:ASN:OD1	2.54	0.40

There are no symmetry-related clashes.

## 5.3 Torsion angles [i](#)

### 5.3.1 Protein backbone [i](#)

In the following table, the Percentiles column shows the percent Ramachandran outliers of the chain as a percentile score with respect to all X-ray entries followed by that with respect to entries of similar resolution.

The Analysed column shows the number of residues for which the backbone conformation was analysed, and the total number of residues.

Mol	Chain	Analysed	Favoured	Allowed	Outliers	Percentiles	
1	A	381/391 (97%)	371 (97%)	10 (3%)	0	100	100
1	B	379/391 (97%)	368 (97%)	11 (3%)	0	100	100
All	All	760/782 (97%)	739 (97%)	21 (3%)	0	100	100

There are no Ramachandran outliers to report.

### 5.3.2 Protein sidechains [i](#)

In the following table, the Percentiles column shows the percent sidechain outliers of the chain as a percentile score with respect to all X-ray entries followed by that with respect to entries of similar resolution.

The Analysed column shows the number of residues for which the sidechain conformation was analysed, and the total number of residues.

Mol	Chain	Analysed	Rotameric	Outliers	Percentiles	
1	A	349/355 (98%)	346 (99%)	3 (1%)	70	63
1	B	349/355 (98%)	345 (99%)	4 (1%)	65	56
All	All	698/710 (98%)	691 (99%)	7 (1%)	70	60

All (7) residues with a non-rotameric sidechain are listed below:

Mol	Chain	Res	Type
1	A	131	VAL
1	A	170	LYS
1	A	334	LYS
1	B	145[A]	ILE
1	B	145[B]	ILE

*Continued on next page...*

*Continued from previous page...*

Mol	Chain	Res	Type
1	B	304	ARG
1	B	325	LYS

Sometimes sidechains can be flipped to improve hydrogen bonding and reduce clashes. All (10) such sidechains are listed below:

Mol	Chain	Res	Type
1	A	232	ASN
1	A	234	HIS
1	A	317	ASN
1	A	410	HIS
1	A	428	GLN
1	A	475	GLN
1	B	147	GLN
1	B	232	ASN
1	B	351	GLN
1	B	458	ASN

### 5.3.3 RNA [i](#)

There are no RNA molecules in this entry.

## 5.4 Non-standard residues in protein, DNA, RNA chains [i](#)

There are no non-standard protein/DNA/RNA residues in this entry.

## 5.5 Carbohydrates [i](#)

There are no oligosaccharides in this entry.

## 5.6 Ligand geometry [i](#)

Of 10 ligands modelled in this entry, 2 are monoatomic - leaving 8 for Mogul analysis.

In the following table, the Counts columns list the number of bonds (or angles) for which Mogul statistics could be retrieved, the number of bonds (or angles) that are observed in the model and the number of bonds (or angles) that are defined in the Chemical Component Dictionary. The Link column lists molecule types, if any, to which the group is linked. The Z score for a bond length (or angle) is the number of standard deviations the observed value is removed from the expected value. A bond length (or angle) with  $|Z| > 2$  is considered an outlier worth inspection. RMSZ is the root-mean-square of all Z scores of the bond lengths (or angles).

Mol	Type	Chain	Res	Link	Bond lengths			Bond angles		
					Counts	RMSZ	# Z  > 2	Counts	RMSZ	# Z  > 2
2	MYA	B	501	-	63,65,65	0.86	3 (4%)	85,91,91	1.70	14 (16%)
2	MYA	A	501	3	63,65,65	0.92	3 (4%)	85,91,91	1.61	13 (15%)
5	KFK	B	505	-	36,36,36	2.27	9 (25%)	49,53,53	1.98	16 (32%)
5	KFK	A	505	-	36,36,36	2.38	10 (27%)	49,53,53	2.03	16 (32%)
4	GOL	B	504	-	5,5,5	0.39	0	5,5,5	0.69	0
4	GOL	A	504	-	5,5,5	0.41	0	5,5,5	0.50	0
4	GOL	B	503	-	5,5,5	0.39	0	5,5,5	0.35	0
4	GOL	A	503	-	5,5,5	0.43	0	5,5,5	0.51	0

In the following table, the Chirals column lists the number of chiral outliers, the number of chiral centers analysed, the number of these observed in the model and the number defined in the Chemical Component Dictionary. Similar counts are reported in the Torsion and Rings columns. '-' means no outliers of that kind were identified.

Mol	Type	Chain	Res	Link	Chirals	Torsions	Rings
2	MYA	B	501	-	-	1/64/80/80	0/3/3/3
2	MYA	A	501	3	-	2/64/80/80	0/3/3/3
5	KFK	B	505	-	-	0/14/14/14	0/4/4/4
5	KFK	A	505	-	-	0/14/14/14	0/4/4/4
4	GOL	B	504	-	-	4/4/4/4	-
4	GOL	A	504	-	-	4/4/4/4	-
4	GOL	B	503	-	-	0/4/4/4	-
4	GOL	A	503	-	-	3/4/4/4	-

All (25) bond length outliers are listed below:

Mol	Chain	Res	Type	Atoms	Z	Observed(Å)	Ideal(Å)
5	B	505	KFK	CAV-CAW	-6.88	1.27	1.38
5	A	505	KFK	CAV-CAW	-6.46	1.28	1.38
5	A	505	KFK	CAS-CAR	-6.17	1.29	1.39
5	B	505	KFK	CAS-CAR	-5.83	1.29	1.39
5	A	505	KFK	CAZ-NBA	4.93	1.36	1.29
5	B	505	KFK	CAZ-NBA	4.34	1.35	1.29
5	B	505	KFK	CAC-CAD	3.82	1.48	1.40
5	A	505	KFK	CAV-CAU	-3.78	1.33	1.39
5	A	505	KFK	CAC-CAD	3.64	1.48	1.40
5	A	505	KFK	NBB-NBA	3.62	1.41	1.36
2	A	501	MYA	C2M-S1	-3.59	1.67	1.76
5	B	505	KFK	CAV-CAU	-3.48	1.34	1.39
5	B	505	KFK	CAD-CAE	3.33	1.48	1.40

*Continued on next page...*

*Continued from previous page...*

Mol	Chain	Res	Type	Atoms	Z	Observed(Å)	Ideal(Å)
5	A	505	KFK	CAS-CAT	-3.10	1.35	1.39
5	A	505	KFK	CAD-CAE	3.03	1.47	1.40
2	B	501	MYA	C2M-S1	-3.00	1.69	1.76
5	A	505	KFK	CAT-CAU	-2.94	1.37	1.41
5	B	505	KFK	NBB-NBA	2.84	1.40	1.36
5	B	505	KFK	CAT-CAU	-2.79	1.37	1.41
5	B	505	KFK	CAS-CAT	-2.53	1.35	1.39
2	A	501	MYA	C8A-N7A	2.42	1.36	1.31
2	B	501	MYA	P1A-O3A	2.36	1.62	1.59
2	B	501	MYA	C5A-N7A	-2.34	1.34	1.39
5	A	505	KFK	CAQ-CAR	2.29	1.53	1.49
2	A	501	MYA	C5A-N7A	-2.20	1.35	1.39

All (59) bond angle outliers are listed below:

Mol	Chain	Res	Type	Atoms	Z	Observed(°)	Ideal(°)
2	B	501	MYA	C3M-C2M-S1	6.36	120.98	113.40
2	A	501	MYA	C3M-C2M-S1	6.03	120.59	113.40
2	B	501	MYA	C5A-C4A-N3A	-5.66	118.92	126.72
2	A	501	MYA	C5A-C4A-N3A	-5.27	119.46	126.72
2	B	501	MYA	N3A-C2A-N1A	-4.99	121.03	128.58
5	A	505	KFK	CAK-NAB-CAC	4.50	132.20	128.09
2	A	501	MYA	N3A-C2A-N1A	-4.41	121.91	128.58
5	B	505	KFK	CAK-NAB-CAC	4.38	132.08	128.09
2	B	501	MYA	O2M-C2M-C3M	-4.32	118.99	123.98
5	B	505	KFK	CAV-CAU-CAT	-4.28	117.17	121.95
5	A	505	KFK	CAV-CAU-CAT	-4.20	117.26	121.95
5	A	505	KFK	CAT-CAZ-NBA	-3.82	106.48	111.45
2	B	501	MYA	N3A-C4A-N9A	3.74	133.53	127.17
2	B	501	MYA	C2A-N3A-C4A	3.69	120.84	111.83
5	A	505	KFK	CAS-CAT-CAZ	-3.67	127.95	136.17
2	B	501	MYA	N9A-C8A-N7A	-3.66	108.74	113.94
5	A	505	KFK	CAD-CAE-NAA	-3.65	107.19	111.37
5	A	505	KFK	CAL-CAE-NAA	3.63	126.43	119.39
5	B	505	KFK	CAT-CAZ-NBA	-3.61	106.76	111.45
5	B	505	KFK	CAS-CAT-CAZ	-3.57	128.18	136.17
5	B	505	KFK	CAD-CAE-NAA	-3.48	107.39	111.37
2	A	501	MYA	C2A-N3A-C4A	3.36	120.03	111.83
2	A	501	MYA	C4A-C5A-N7A	-3.35	106.75	110.58
5	A	505	KFK	CBD-CAZ-NBA	3.32	123.22	119.63
2	A	501	MYA	N9A-C8A-N7A	-3.31	109.24	113.94
5	B	505	KFK	CAK-NAB-NAA	-3.28	114.38	119.29

*Continued on next page...*

*Continued from previous page...*

Mol	Chain	Res	Type	Atoms	Z	Observed(°)	Ideal(°)
5	A	505	KFK	CAJ-CAC-NAB	3.27	128.15	122.97
2	A	501	MYA	O2M-C2M-C3M	-3.22	120.26	123.98
5	B	505	KFK	CAL-CAE-NAA	3.14	125.48	119.39
5	A	505	KFK	CAU-NBB-NBA	-3.04	109.50	111.62
5	B	505	KFK	CAR-CAQ-CAI	3.01	127.39	122.18
5	B	505	KFK	CAV-CAU-NBB	2.96	135.97	132.00
5	A	505	KFK	CAE-NAA-NAB	2.95	108.84	105.55
5	B	505	KFK	CBD-CAZ-NBA	2.90	122.77	119.63
5	A	505	KFK	CAK-NAB-NAA	-2.88	114.97	119.29
2	B	501	MYA	C5A-N7A-C8A	2.85	107.93	103.45
2	A	501	MYA	O2M-C2M-S1	-2.80	119.12	122.68
2	A	501	MYA	N3A-C4A-N9A	2.77	131.88	127.17
5	A	505	KFK	CAV-CAU-NBB	2.77	135.72	132.00
2	B	501	MYA	C4A-C5A-N7A	-2.74	107.45	110.58
5	B	505	KFK	CAJ-CAC-NAB	2.72	127.27	122.97
2	A	501	MYA	C5A-N7A-C8A	2.68	107.66	103.45
2	A	501	MYA	C5A-C4A-N9A	2.61	108.66	105.81
2	A	501	MYA	C7-N8-C9	2.55	127.14	122.55
5	B	505	KFK	CAE-NAA-NAB	2.49	108.33	105.55
2	B	501	MYA	C7-N8-C9	2.48	127.00	122.55
2	B	501	MYA	C4A-N9A-C8A	2.46	108.32	105.74
5	B	505	KFK	CAS-CAT-CAU	2.45	122.75	119.82
5	B	505	KFK	CAU-NBB-NBA	-2.44	109.92	111.62
5	A	505	KFK	CBC-NBB-NBA	2.30	123.10	119.97
5	B	505	KFK	CAP-CAQ-CAR	-2.20	114.34	118.70
5	A	505	KFK	CAS-CAT-CAU	2.19	122.43	119.82
5	A	505	KFK	CAV-CAW-CAR	2.18	123.92	121.12
2	A	501	MYA	C4M-C3M-C2M	-2.11	107.61	112.27
2	B	501	MYA	O2M-C2M-S1	-2.09	120.03	122.68
2	B	501	MYA	C7-C6-C5	-2.05	108.98	112.39
5	B	505	KFK	CAT-CAS-CAR	-2.04	117.02	120.82
5	A	505	KFK	CAR-CAQ-CAI	2.04	125.70	122.18
2	B	501	MYA	C6-C7-N8	-2.01	107.72	112.00

There are no chirality outliers.

All (14) torsion outliers are listed below:

Mol	Chain	Res	Type	Atoms
4	A	503	GOL	O1-C1-C2-C3
4	A	504	GOL	O1-C1-C2-C3
4	B	504	GOL	O1-C1-C2-C3
4	A	504	GOL	O1-C1-C2-O2

*Continued on next page...*

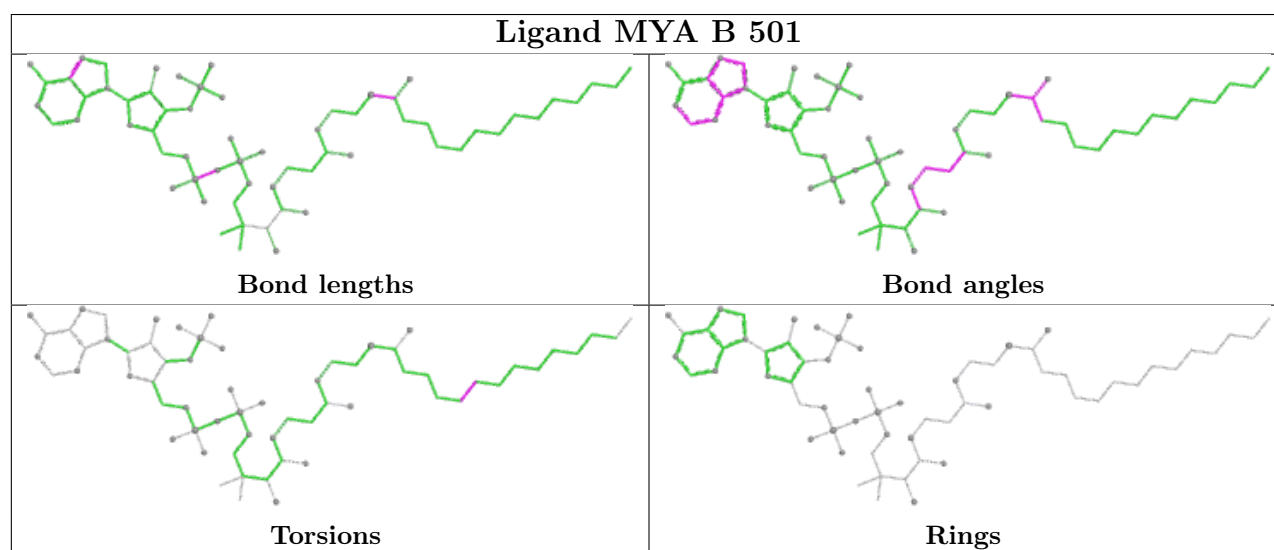
*Continued from previous page...*

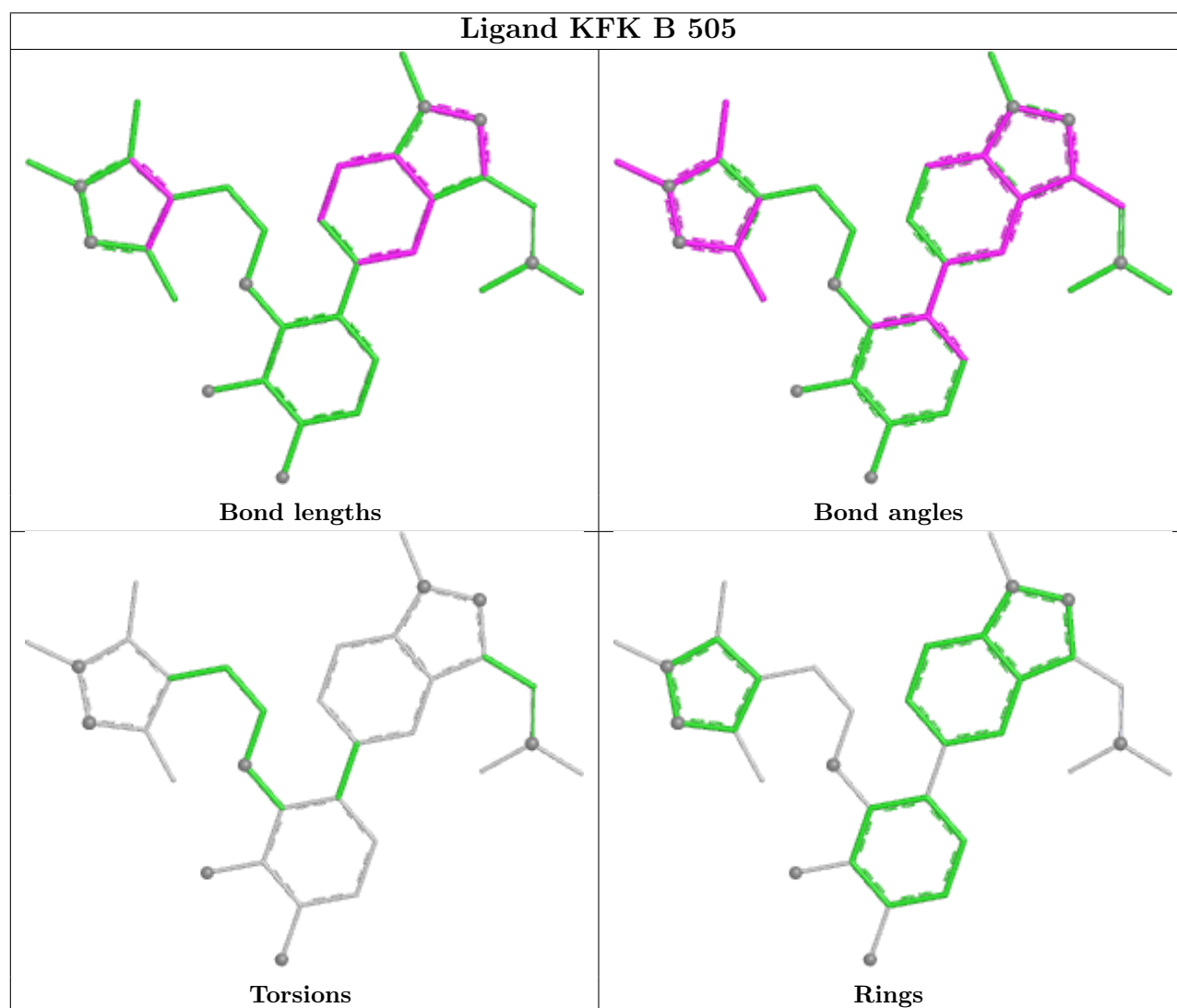
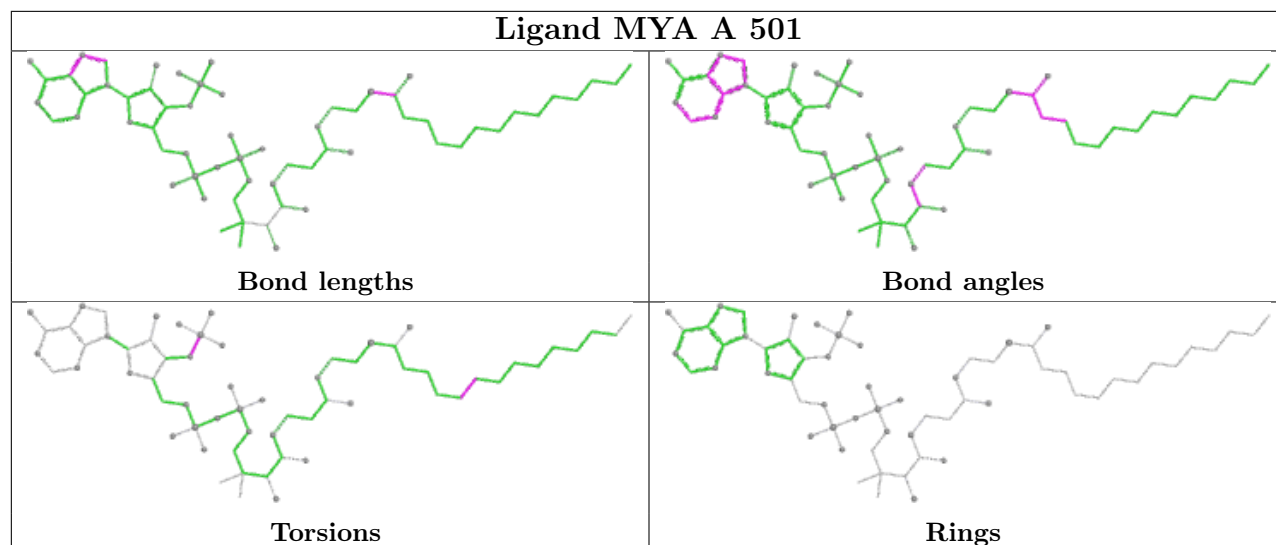
Mol	Chain	Res	Type	Atoms
4	A	504	GOL	O2-C2-C3-O3
4	B	504	GOL	O1-C1-C2-O2
4	A	504	GOL	C1-C2-C3-O3
4	B	504	GOL	C1-C2-C3-O3
4	A	503	GOL	O1-C1-C2-O2
4	B	504	GOL	O2-C2-C3-O3
4	A	503	GOL	O2-C2-C3-O3
2	A	501	MYA	C5M-C6M-C7M-C8M
2	A	501	MYA	C3X-O3X-P3X-O8A
2	B	501	MYA	C5M-C6M-C7M-C8M

There are no ring outliers.

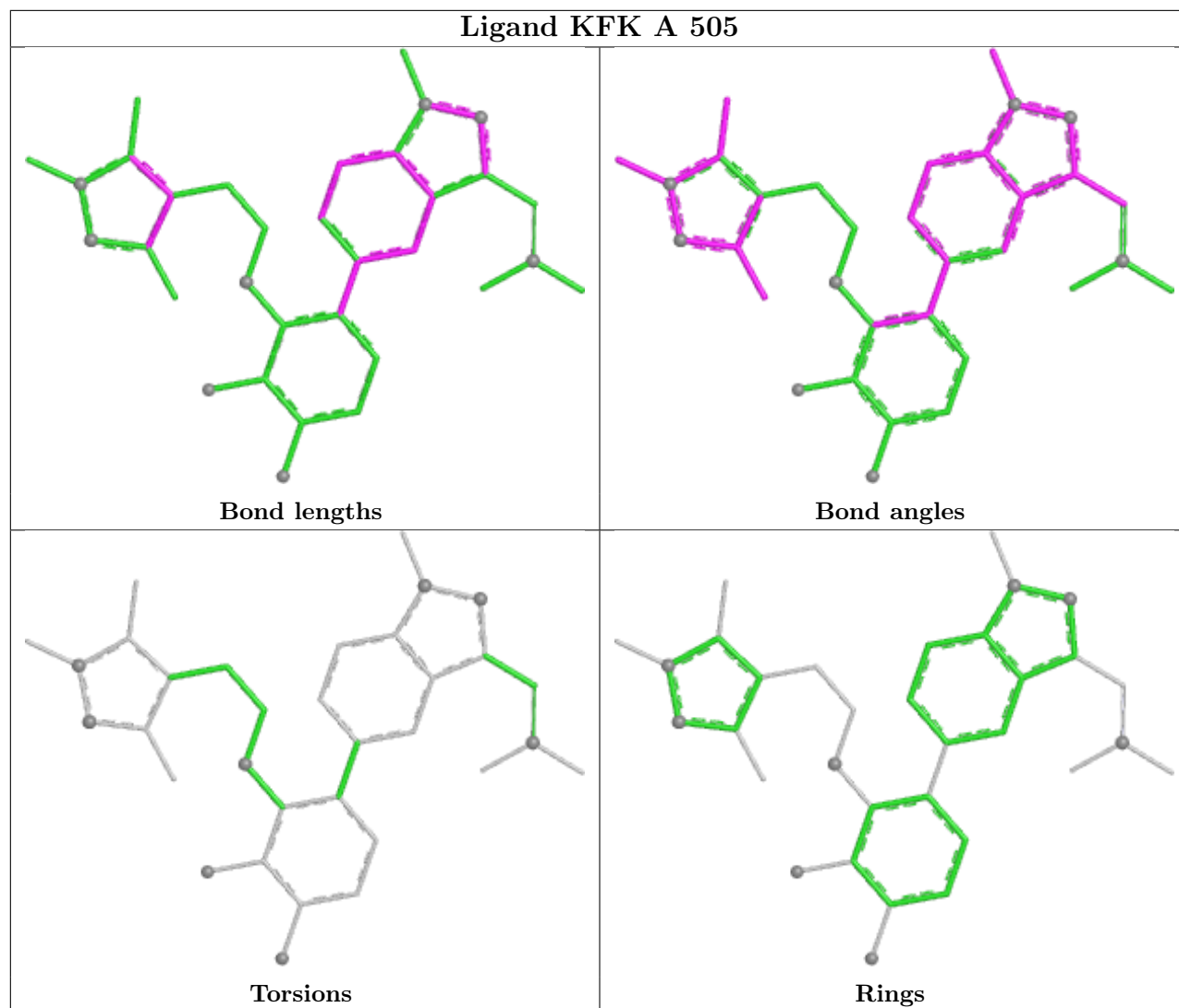
No monomer is involved in short contacts.

The following is a two-dimensional graphical depiction of Mogul quality analysis of bond lengths, bond angles, torsion angles, and ring geometry for all instances of the Ligand of Interest. In addition, ligands with molecular weight > 250 and outliers as shown on the validation Tables will also be included. For torsion angles, if less than 5% of the Mogul distribution of torsion angles is within 10 degrees of the torsion angle in question, then that torsion angle is considered an outlier. Any bond that is central to one or more torsion angles identified as an outlier by Mogul will be highlighted in the graph. For rings, the root-mean-square deviation (RMSD) between the ring in question and similar rings identified by Mogul is calculated over all ring torsion angles. If the average RMSD is greater than 60 degrees and the minimal RMSD between the ring in question and any Mogul-identified rings is also greater than 60 degrees, then that ring is considered an outlier. The outliers are highlighted in purple. The color gray indicates Mogul did not find sufficient equivalents in the CSD to analyse the geometry.









## 5.7 Other polymers [i](#)

There are no such residues in this entry.

## 5.8 Polymer linkage issues [i](#)

There are no chain breaks in this entry.

## 6 Fit of model and data [i](#)

### 6.1 Protein, DNA and RNA chains [i](#)

In the following table, the column labelled ‘#RSRZ > 2’ contains the number (and percentage) of RSRZ outliers, followed by percent RSRZ outliers for the chain as percentile scores relative to all X-ray entries and entries of similar resolution. The OWAB column contains the minimum, median, 95<sup>th</sup> percentile and maximum values of the occupancy-weighted average B-factor per residue. The column labelled ‘Q < 0.9’ lists the number of (and percentage) of residues with an average occupancy less than 0.9.

Mol	Chain	Analysed	<RSRZ>	#RSRZ>2	OWAB(Å <sup>2</sup> )	Q<0.9
1	A	382/391 (97%)	-0.10	9 (2%) 59 66	7, 12, 30, 58	1 (0%)
1	B	377/391 (96%)	-0.10	9 (2%) 59 66	5, 11, 29, 57	6 (1%)
All	All	759/782 (97%)	-0.10	18 (2%) 59 66	5, 12, 30, 58	7 (0%)

All (18) RSRZ outliers are listed below:

Mol	Chain	Res	Type	RSRZ
1	A	131	VAL	4.1
1	B	336	ALA	3.1
1	A	115	ARG	2.8
1	A	316	ARG	2.8
1	B	115	ARG	2.8
1	B	131	VAL	2.8
1	A	315	SER	2.8
1	A	133	ASN	2.7
1	A	317	ASN	2.7
1	B	317	ASN	2.6
1	A	334	LYS	2.6
1	B	414	LYS	2.5
1	A	184	ASP	2.4
1	B	129	GLY	2.3
1	B	313	HIS	2.2
1	A	134	THR	2.2
1	B	116	SER	2.1
1	B	316	ARG	2.0

### 6.2 Non-standard residues in protein, DNA, RNA chains [i](#)

There are no non-standard protein/DNA/RNA residues in this entry.

### 6.3 Carbohydrates [i](#)

There are no oligosaccharides in this entry.

### 6.4 Ligands [i](#)

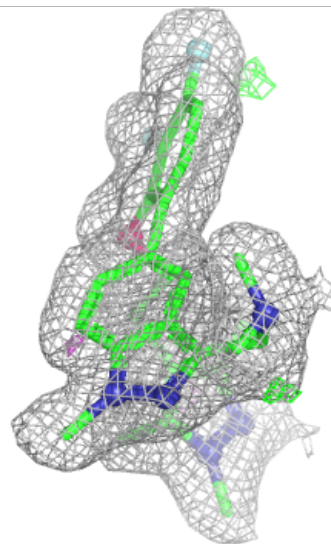
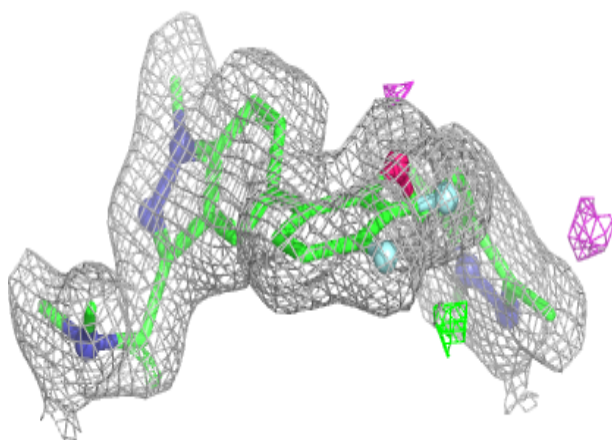
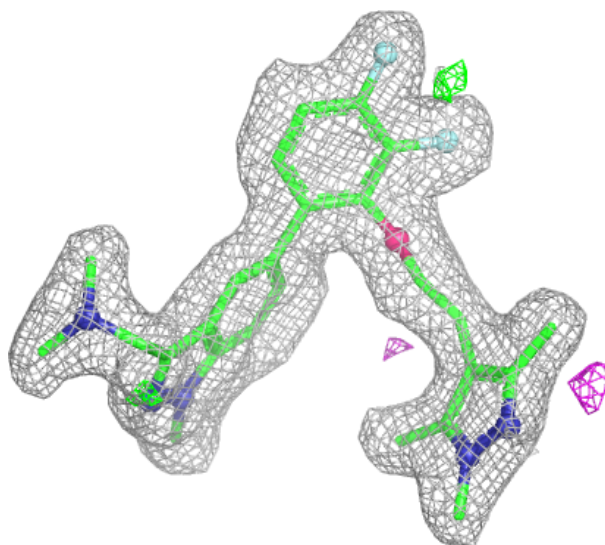
In the following table, the Atoms column lists the number of modelled atoms in the group and the number defined in the chemical component dictionary. The B-factors column lists the minimum, median, 95<sup>th</sup> percentile and maximum values of B factors of atoms in the group. The column labelled 'Q< 0.9' lists the number of atoms with occupancy less than 0.9.

Mol	Type	Chain	Res	Atoms	RSCC	RSR	B-factors( $\text{\AA}^2$ )	Q<0.9
4	GOL	B	504	6/6	0.84	0.12	17,18,20,20	0
4	GOL	A	504	6/6	0.85	0.10	13,16,21,23	0
3	MG	B	502	1/1	0.87	0.11	21,21,21,21	0
4	GOL	A	503	6/6	0.90	0.08	9,17,21,22	0
4	GOL	B	503	6/6	0.92	0.07	9,10,14,15	0
3	MG	A	502	1/1	0.93	0.11	22,22,22,22	0
5	KFK	A	505	33/33	0.94	0.06	4,8,11,13	0
5	KFK	B	505	33/33	0.94	0.06	6,9,12,13	0
2	MYA	A	501	63/63	0.96	0.06	5,10,15,20	0
2	MYA	B	501	63/63	0.96	0.06	3,11,16,19	0

The following is a graphical depiction of the model fit to experimental electron density of all instances of the Ligand of Interest. In addition, ligands with molecular weight > 250 and outliers as shown on the geometry validation Tables will also be included. Each fit is shown from different orientation to approximate a three-dimensional view.

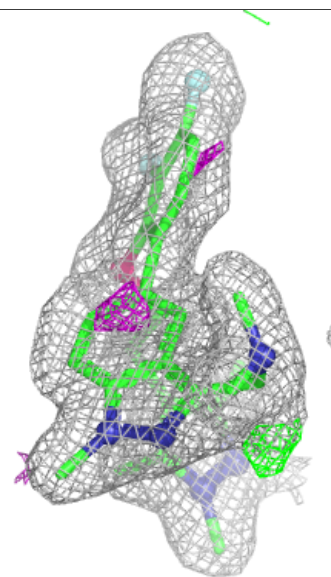
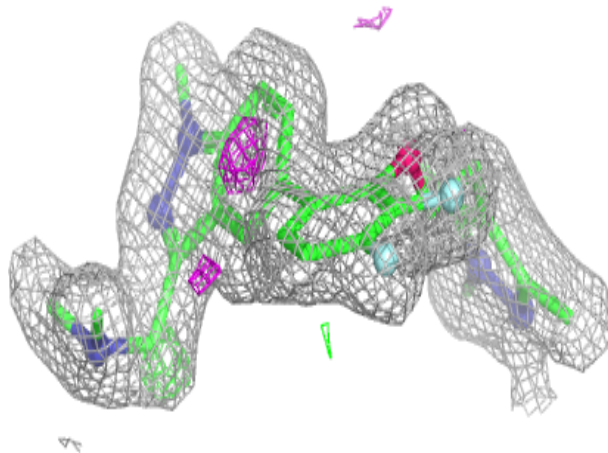
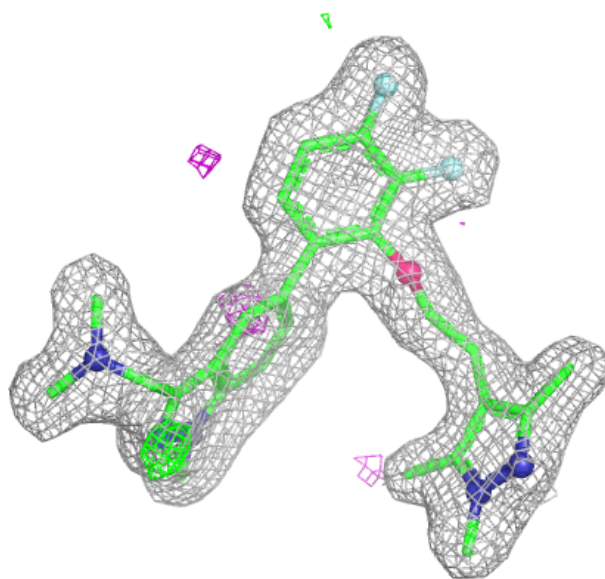
**Electron density around KFK A 505:**

$2mF_o-DF_c$  (at 0.7 rmsd) in gray  
 $mF_o-DF_c$  (at 3 rmsd) in purple (negative)  
and green (positive)



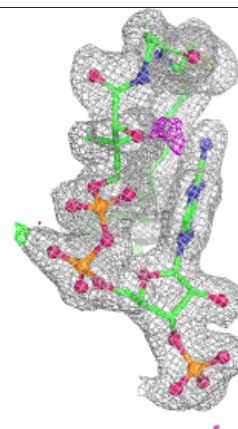
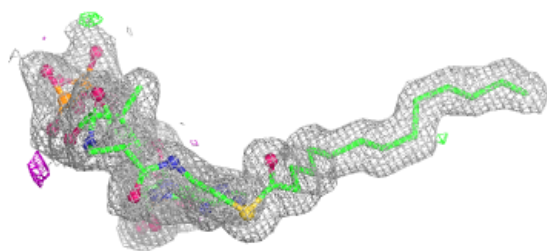
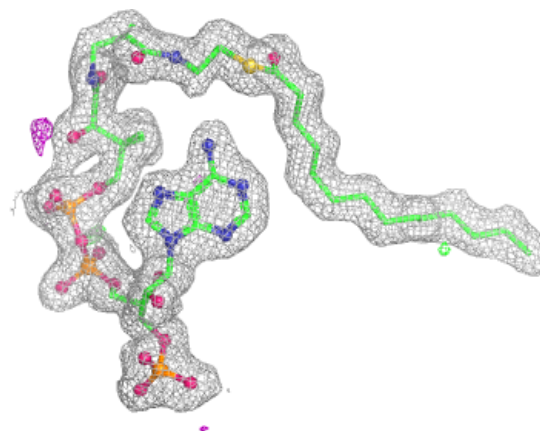
**Electron density around KFK B 505:**

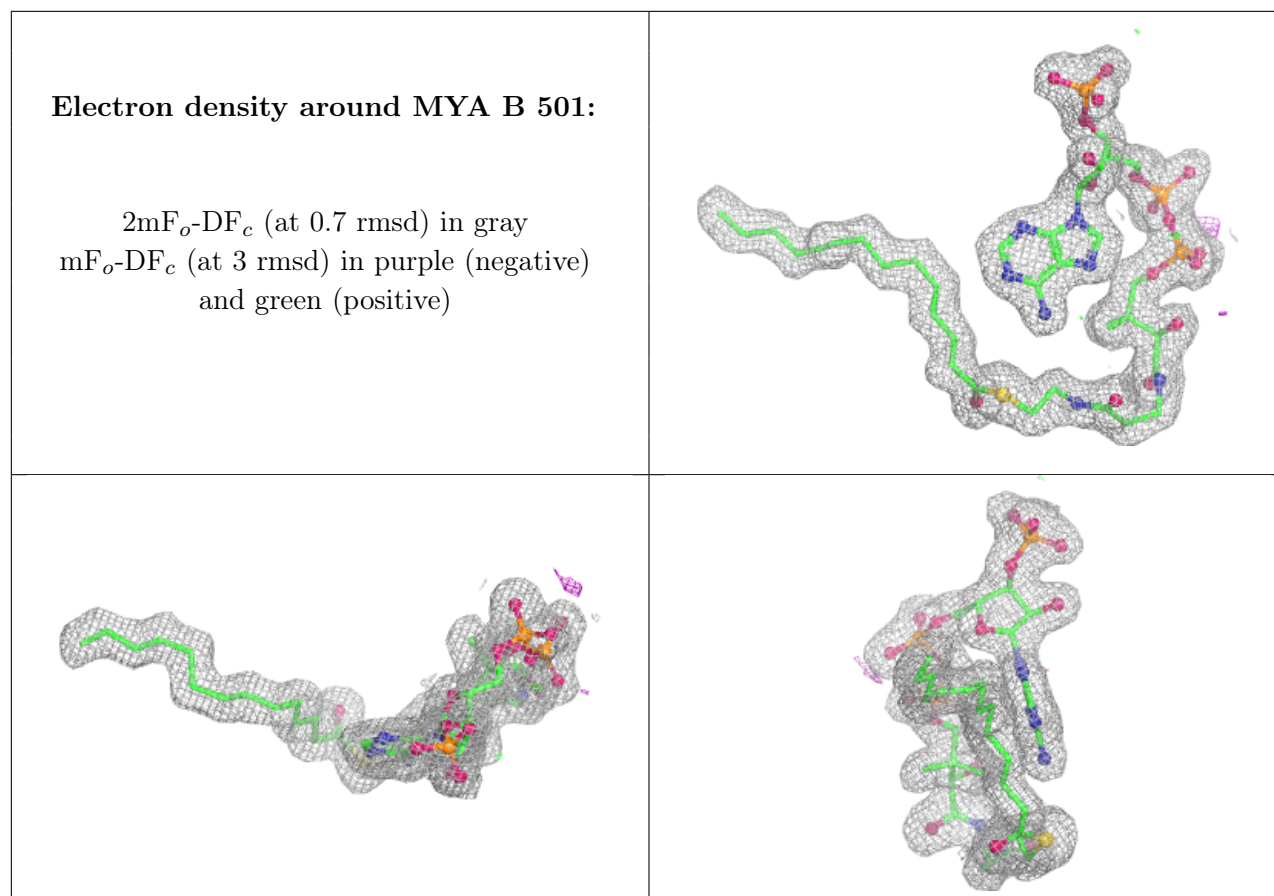
$2mF_o-DF_c$  (at 0.7 rmsd) in gray  
 $mF_o-DF_c$  (at 3 rmsd) in purple (negative)  
and green (positive)



**Electron density around MYA A 501:**

$2mF_o-DF_c$  (at 0.7 rmsd) in gray  
 $mF_o-DF_c$  (at 3 rmsd) in purple (negative)  
and green (positive)





## 6.5 Other polymers [i](#)

There are no such residues in this entry.