



# Full wwPDB X-ray Structure Validation Report ⓘ

Mar 5, 2026 – 05:59 PM UTC

PDB ID : 5O9S / pdb\_00005o9s  
Title : HsNMT1 in complex with CoA and Myristoylated-GKSNSKLK octapeptide  
Authors : Dian, C.; Meinnel, T.; Giglione, C.  
Deposited on : 2017-06-20  
Resolution : 2.70 Å(reported)

This is a Full wwPDB X-ray Structure Validation Report for a publicly released PDB entry.

We welcome your comments at [validation@mail.wwpdb.org](mailto:validation@mail.wwpdb.org)

A user guide is available at

<https://www.wwpdb.org/validation/2017/XrayValidationReportHelp>

with specific help available everywhere you see the ⓘ symbol.

The types of validation reports are described at

<http://www.wwpdb.org/validation/2017/FAQs#types>.

---

The following versions of software and data (see [references ⓘ](#)) were used in the production of this report:

MolProbity	:	4-5-2 with Phenix2.0
Mogul	:	2022.3.0, CSD as543be (2022)
Xtriage (Phenix)	:	2.0
EDS	:	3.0
Percentile statistics	:	20250101.v01 (using entries in the PDB archive January 1st 2025)
CCP4	:	9.0.010 (Gargrove)
Density-Fitness	:	1.0.12
Ideal geometry (proteins)	:	Engh & Huber (2001)
Ideal geometry (DNA, RNA)	:	Parkinson et al. (1996)
Validation Pipeline (wwPDB-VP)	:	2.49

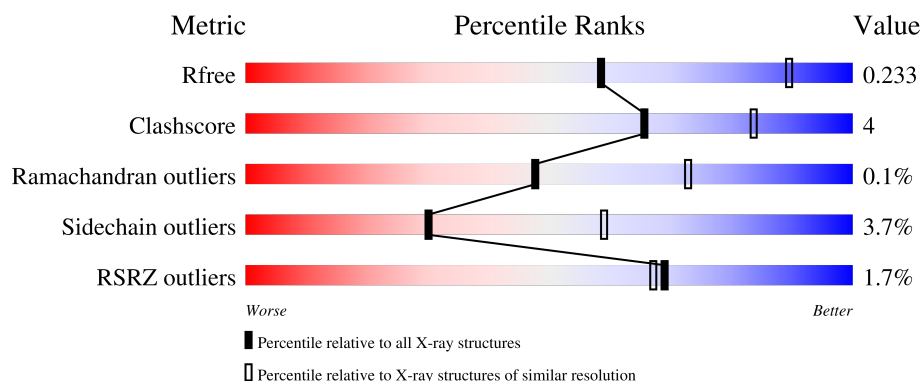
# 1 Overall quality at a glance

The following experimental techniques were used to determine the structure:

## *X-RAY DIFFRACTION*

The reported resolution of this entry is 2.70 Å.

Percentile scores (ranging between 0-100) for global validation metrics of the entry are shown in the following graphic. The table shows the number of entries on which the scores are based.



Metric	Whole archive (#Entries)	Similar resolution (#Entries, resolution range(Å))
$R_{free}$	180053	3538 (2.70-2.70)
Clashscore	190562	3843 (2.70-2.70)
Ramachandran outliers	187476	3778 (2.70-2.70)
Sidechain outliers	187428	3778 (2.70-2.70)
RSRZ outliers	180081	3538 (2.70-2.70)

The table below summarises the geometric issues observed across the polymeric chains and their fit to the electron density. The red, orange, yellow and green segments of the lower bar indicate the fraction of residues that contain outliers for  $\geq 3$ , 2, 1 and 0 types of geometric quality criteria respectively. A grey segment represents the fraction of residues that are not modelled. The numeric value for each fraction is indicated below the corresponding segment, with a dot representing fractions  $\leq 5\%$ . The upper red bar (where present) indicates the fraction of residues that have poor fit to the electron density. The numeric value is given above the bar.

Mol	Chain	Length	Quality of chain
1	A	402	<div> <div>82%</div> <div>12%</div> <div>6%</div> </div>
1	B	402	<div> <div>2%</div> <div>85%</div> <div>9%</div> <div>5%</div> </div>
2	C	8	<div> <div>62%</div> <div>12%</div> <div>25%</div> </div>
2	D	8	<div> <div>12%</div> <div>88%</div> <div>12%</div> </div>

## 2 Entry composition

There are 6 unique types of molecules in this entry. The entry contains 6438 atoms, of which 0 are hydrogens and 0 are deuteriums.

In the tables below, the ZeroOcc column contains the number of atoms modelled with zero occupancy, the AltConf column contains the number of residues with at least one atom in alternate conformation and the Trace column contains the number of residues modelled with at most 2 atoms.

- Molecule 1 is a protein called Glycylpeptide N-tetradecanoyltransferase 1.

Mol	Chain	Residues	Atoms					ZeroOcc	AltConf	Trace
1	A	378	Total	C	N	O	S	0	0	0
			3023	1969	498	542	14			
1	B	381	Total	C	N	O	S	0	0	0
			3068	1993	513	547	15			

There are 8 discrepancies between the modelled and reference sequences:

Chain	Residue	Modelled	Actual	Comment	Reference
A	95	GLY	-	expression tag	UNP P30419
A	96	GLY	-	expression tag	UNP P30419
A	97	SER	-	expression tag	UNP P30419
A	98	GLU	-	expression tag	UNP P30419
B	95	GLY	-	expression tag	UNP P30419
B	96	GLY	-	expression tag	UNP P30419
B	97	SER	-	expression tag	UNP P30419
B	98	GLU	-	expression tag	UNP P30419

- Molecule 2 is a protein called Neuronal calcium sensor 1.

Mol	Chain	Residues	Atoms				ZeroOcc	AltConf	Trace
2	C	8	Total	C	N	O	0	0	0
			60	36	12	12			
2	D	8	Total	C	N	O	0	0	0
			56	33	11	12			

- Molecule 3 is GLYCEROL (CCD ID: GOL) (formula: C<sub>3</sub>H<sub>8</sub>O<sub>3</sub>).

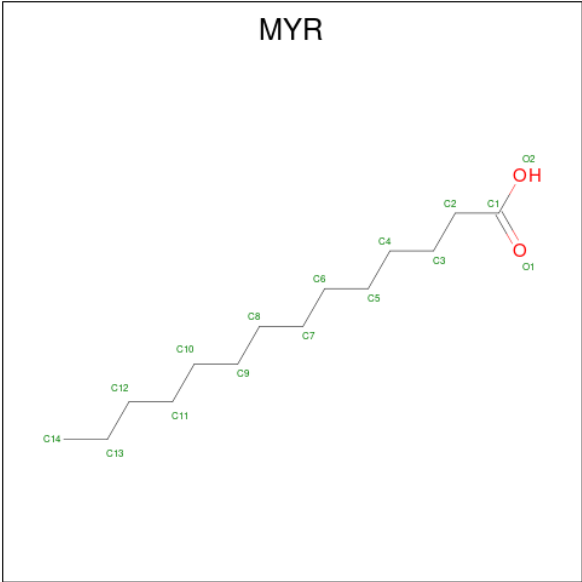


Mol	Chain	Residues	Atoms			ZeroOcc	AltConf
3	A	1	Total	C	O	0	0
			6	3	3		
3	A	1	Total	C	O	0	0
			6	3	3		
3	B	1	Total	C	O	0	0
			6	3	3		
3	B	1	Total	C	O	0	0
			6	3	3		

- Molecule 4 is CHLORIDE ION (CCD ID: CL) (formula: Cl).

Mol	Chain	Residues	Atoms		ZeroOcc	AltConf
4	A	1	Total	Cl	0	0
			1	1		
4	B	2	Total	Cl	0	0
			2	2		

- Molecule 5 is MYRISTIC ACID (CCD ID: MYR) (formula: C<sub>14</sub>H<sub>28</sub>O<sub>2</sub>).



Mol	Chain	Residues	Atoms			ZeroOcc	AltConf
5	C	1	Total	C	O	0	0
			15	14	1		
5	D	1	Total	C	O	0	0
			15	14	1		

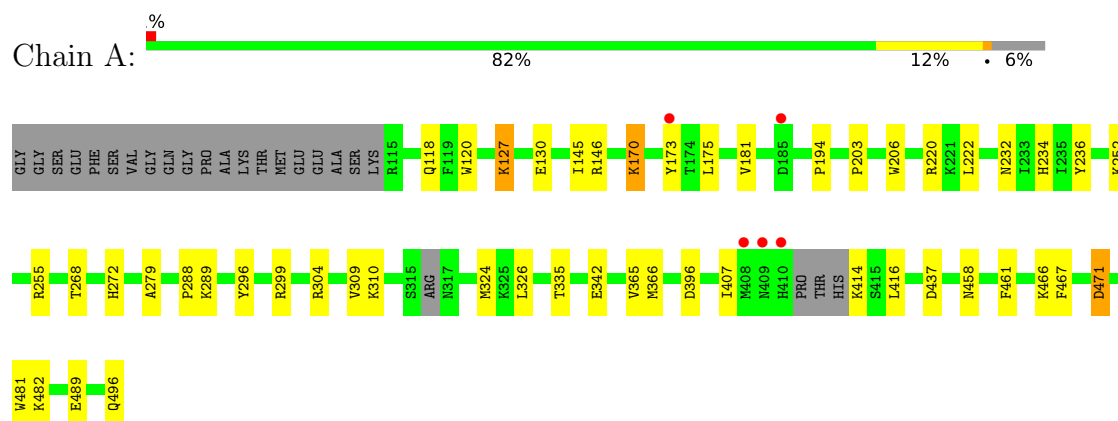
- Molecule 6 is water.

Mol	Chain	Residues	Atoms		ZeroOcc	AltConf
6	A	88	Total	O	0	0
			88	88		
6	B	85	Total	O	0	0
			85	85		
6	D	1	Total	O	0	0
			1	1		

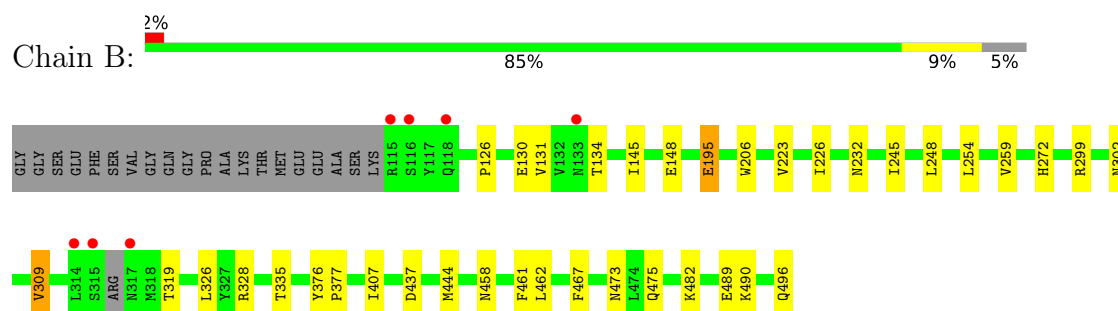
### 3 Residue-property plots

These plots are drawn for all protein, RNA, DNA and oligosaccharide chains in the entry. The first graphic for a chain summarises the proportions of the various outlier classes displayed in the second graphic. The second graphic shows the sequence view annotated by issues in geometry and electron density. Residues are color-coded according to the number of geometric quality criteria for which they contain at least one outlier: green = 0, yellow = 1, orange = 2 and red = 3 or more. A red dot above a residue indicates a poor fit to the electron density ( $RSRZ > 2$ ). Stretches of 2 or more consecutive residues without any outlier are shown as a green connector. Residues present in the sample, but not in the model, are shown in grey.

#### • Molecule 1: Glycylpeptide N-tetradecanoyltransferase 1



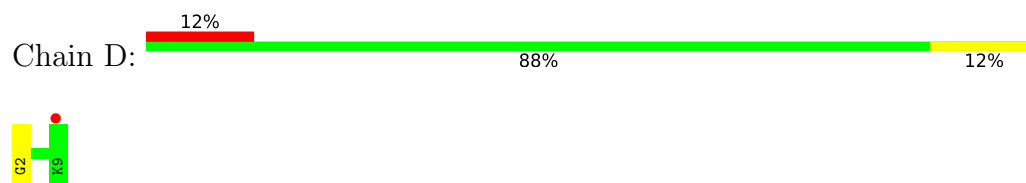
#### • Molecule 1: Glycylpeptide N-tetradecanoyltransferase 1



#### • Molecule 2: Neuronal calcium sensor 1



#### • Molecule 2: Neuronal calcium sensor 1



## 4 Data and refinement statistics

Property	Value	Source
Space group	P 2 <sub>1</sub> 2 <sub>1</sub> 2 <sub>1</sub>	Depositor
Cell constants a, b, c, $\alpha$ , $\beta$ , $\gamma$	58.02Å 80.25Å 178.15Å 90.00° 90.00° 90.00°	Depositor
Resolution (Å)	48.62 – 2.70 48.62 – 2.70	Depositor EDS
% Data completeness (in resolution range)	99.4 (48.62-2.70) 99.4 (48.62-2.70)	Depositor EDS
$R_{merge}$	(Not available)	Depositor
$R_{sym}$	0.13	Depositor
$\langle I/\sigma(I) \rangle$ <sup>1</sup>	4.54 (at 2.69Å)	Xtriage
Refinement program	PHENIX (1.10.1_2155: ???)	Depositor
R, $R_{free}$	0.175 , 0.227 0.178 , 0.233	Depositor DCC
$R_{free}$ test set	1138 reflections (4.81%)	wwPDB-VP
Wilson B-factor (Å <sup>2</sup> )	25.5	Xtriage
Anisotropy	0.885	Xtriage
Bulk solvent $k_{sol}$ (e/Å <sup>3</sup> ), $B_{sol}$ (Å <sup>2</sup> )	0.37 , 43.1	EDS
L-test for twinning <sup>2</sup>	$\langle  L  \rangle = 0.46$ , $\langle L^2 \rangle = 0.29$	Xtriage
Estimated twinning fraction	No twinning to report.	Xtriage
$F_o, F_c$ correlation	0.93	EDS
Total number of atoms	6438	wwPDB-VP
Average B, all atoms (Å <sup>2</sup> )	23.0	wwPDB-VP

Xtriage's analysis on translational NCS is as follows: *The largest off-origin peak in the Patterson function is 18.65% of the height of the origin peak. No significant pseudotranslation is detected.*

<sup>1</sup>Intensities estimated from amplitudes.

<sup>2</sup>Theoretical values of  $\langle |L| \rangle$ ,  $\langle L^2 \rangle$  for acentric reflections are 0.5, 0.333 respectively for untwinned datasets, and 0.375, 0.2 for perfectly twinned datasets.

## 5 Model quality [i](#)

### 5.1 Standard geometry [i](#)

Bond lengths and bond angles in the following residue types are not validated in this section: CL, GOL, MYR

The Z score for a bond length (or angle) is the number of standard deviations the observed value is removed from the expected value. A bond length (or angle) with  $|Z| > 5$  is considered an outlier worth inspection. RMSZ is the root-mean-square of all Z scores of the bond lengths (or angles).

Mol	Chain	Bond lengths		Bond angles	
		RMSZ	$\# Z  > 5$	RMSZ	$\# Z  > 5$
1	A	0.14	0/3106	0.33	0/4229
1	B	0.13	0/3156	0.33	0/4299
2	C	1.11	1/59 (1.7%)	0.45	0/73
2	D	1.27	1/55 (1.8%)	0.54	0/69
All	All	0.21	2/6376 (0.0%)	0.34	0/8670

All (2) bond length outliers are listed below:

Mol	Chain	Res	Type	Atoms	Z	Observed(Å)	Ideal(Å)
2	D	2	GLY	C-N	-9.24	1.20	1.33
2	C	2	GLY	C-N	8.19	1.44	1.33

There are no bond angle outliers.

There are no chirality outliers.

There are no planarity outliers.

### 5.2 Too-close contacts [i](#)

In the following table, the Non-H and H(model) columns list the number of non-hydrogen atoms and hydrogen atoms in the chain respectively. The H(added) column lists the number of hydrogen atoms added and optimized by MolProbity. The Clashes column lists the number of clashes within the asymmetric unit, whereas Symm-Clashes lists symmetry-related clashes.

Mol	Chain	Non-H	H(model)	H(added)	Clashes	Symm-Clashes
1	A	3023	0	2960	30	0
1	B	3068	0	3004	16	0
2	C	60	0	68	3	0
2	D	56	0	57	0	0
3	A	12	0	16	3	0

*Continued on next page...*



*Continued from previous page...*

Mol	Chain	Non-H	H(model)	H(added)	Clashes	Symm-Clashes
3	B	12	0	16	1	0
4	A	1	0	0	0	0
4	B	2	0	0	1	0
5	C	15	0	27	4	0
5	D	15	0	27	1	0
6	A	88	0	0	2	0
6	B	85	0	0	0	0
6	D	1	0	0	0	0
All	All	6438	0	6175	47	0

The all-atom clashscore is defined as the number of clashes found per 1000 atoms (including hydrogen atoms). The all-atom clashscore for this structure is 4.

All (47) close contacts within the same asymmetric unit are listed below, sorted by their clash magnitude.

Atom-1	Atom-2	Interatomic distance (Å)	Clash overlap (Å)
1:B:309:VAL:HG21	1:B:407:ILE:HD13	1.70	0.73
1:B:496:GLN:HE22	3:B:504:GOL:H32	1.58	0.68
1:B:223:VAL:HB	1:B:254:LEU:HD21	1.78	0.66
1:A:268:THR:HG23	5:C:101:MYR:H132	1.77	0.66
1:A:304:ARG:HB2	1:A:324:MET:HE3	1.79	0.64
1:A:220:ARG:NH2	6:A:603:HOH:O	2.31	0.62
1:B:126:PRO:HG3	1:B:482:LYS:HG2	1.82	0.61
1:A:252:LYS:HA	1:A:255:ARG:HG3	1.85	0.58
1:A:170:LYS:HA	1:A:173:TYR:CE2	2.39	0.58
1:A:481:TRP:O	3:A:501:GOL:O2	2.22	0.57
1:B:254:LEU:HD12	1:B:259:VAL:HG21	1.88	0.56
1:A:366:MET:HE2	3:A:503:GOL:H32	1.87	0.56
1:A:471:ASP:OD2	2:C:7:LYS:NZ	2.39	0.55
1:B:195:GLU:H	1:B:195:GLU:CD	2.13	0.55
1:A:146:ARG:NH2	6:A:607:HOH:O	2.40	0.55
1:A:173:TYR:CE2	1:A:194:PRO:HG3	2.43	0.54
1:B:335:THR:OG1	1:B:437:ASP:OD1	2.17	0.53
1:A:145:ILE:HG12	1:A:272:HIS:HB3	1.91	0.52
1:A:309:VAL:HG11	1:A:407:ILE:HD13	1.92	0.52
1:B:145:ILE:HD12	1:B:272:HIS:HB3	1.91	0.51
1:B:131:VAL:HG13	4:B:502:CL:CL	2.48	0.50
1:A:458:ASN:HA	1:A:461:PHE:CE2	2.46	0.50
1:A:181:VAL:HG11	2:C:3:LYS:O	2.12	0.50
1:B:245:ILE:HG13	5:D:101:MYR:H92	1.95	0.49
1:B:226:ILE:HD12	1:B:248:LEU:HD13	1.95	0.48

*Continued on next page...*

*Continued from previous page...*

Atom-1	Atom-2	Interatomic distance (Å)	Clash overlap (Å)
1:A:127:LYS:HA	1:A:288:PRO:HB3	1.96	0.48
1:A:175:LEU:HD22	1:A:222:LEU:HG	1.96	0.47
1:A:130:GLU:O	1:A:289:LYS:HE3	2.15	0.47
1:A:234:HIS:NE2	1:A:236:TYR:O	2.48	0.46
1:A:232:ASN:HB3	1:A:365:VAL:HB	1.99	0.45
1:A:326:LEU:O	1:A:466:LYS:NZ	2.44	0.45
1:B:458:ASN:HA	1:B:461:PHE:CE2	2.52	0.45
1:A:299:ARG:HB2	1:A:467:PHE:CE2	2.52	0.45
1:A:120:TRP:HH2	5:C:101:MYR:H61	1.82	0.44
1:B:299:ARG:HB2	1:B:467:PHE:CE2	2.53	0.43
1:A:279:ALA:HB2	5:C:101:MYR:H122	2.00	0.43
1:B:490:LYS:HA	1:B:490:LYS:HD3	1.71	0.43
1:A:288:PRO:HA	1:A:289:LYS:HA	1.85	0.43
1:A:296:TYR:OH	2:C:3:LYS:HD3	2.19	0.43
1:A:118:GLN:H	1:A:118:GLN:CD	2.26	0.42
1:B:489:GLU:H	1:B:489:GLU:CD	2.28	0.42
1:A:335:THR:OG1	1:A:437:ASP:OD2	2.32	0.41
1:A:489:GLU:H	1:A:489:GLU:CD	2.27	0.41
5:C:101:MYR:H121	5:C:101:MYR:H91	1.70	0.41
1:A:203:PRO:O	1:A:206:TRP:HD1	2.03	0.41
1:A:496:GLN:NE2	3:A:503:GOL:O1	2.41	0.41
1:B:376:TYR:HA	1:B:377:PRO:HD3	1.97	0.40

There are no symmetry-related clashes.

## 5.3 Torsion angles [i](#)

### 5.3.1 Protein backbone [i](#)

In the following table, the Percentiles column shows the percent Ramachandran outliers of the chain as a percentile score with respect to all X-ray entries followed by that with respect to entries of similar resolution.

The Analysed column shows the number of residues for which the backbone conformation was analysed, and the total number of residues.

Mol	Chain	Analysed	Favoured	Allowed	Outliers	Percentiles	
1	A	372/402 (92%)	360 (97%)	11 (3%)	1 (0%)	36	60
1	B	377/402 (94%)	368 (98%)	9 (2%)	0	100	100
2	C	6/8 (75%)	6 (100%)	0	0	100	100

*Continued on next page...*

*Continued from previous page...*

Mol	Chain	Analysed	Favoured	Allowed	Outliers	Percentiles	
2	D	6/8 (75%)	5 (83%)	1 (17%)	0	100	100
All	All	761/820 (93%)	739 (97%)	21 (3%)	1 (0%)	48	73

All (1) Ramachandran outliers are listed below:

Mol	Chain	Res	Type
1	A	471	ASP

### 5.3.2 Protein sidechains ⓘ

In the following table, the Percentiles column shows the percent sidechain outliers of the chain as a percentile score with respect to all X-ray entries followed by that with respect to entries of similar resolution.

The Analysed column shows the number of residues for which the sidechain conformation was analysed, and the total number of residues.

Mol	Chain	Analysed	Rotameric	Outliers	Percentiles	
1	A	325/362 (90%)	317 (98%)	8 (2%)	42	71
1	B	332/362 (92%)	317 (96%)	15 (4%)	24	52
2	C	7/7 (100%)	5 (71%)	2 (29%)	0	1
2	D	6/7 (86%)	6 (100%)	0	100	100
All	All	670/738 (91%)	645 (96%)	25 (4%)	30	59

All (25) residues with a non-rotameric sidechain are listed below:

Mol	Chain	Res	Type
1	A	127	LYS
1	A	170	LYS
1	A	310	LYS
1	A	342	GLU
1	A	396	ASP
1	A	414	LYS
1	A	416	LEU
1	A	482	LYS
1	B	130	GLU
1	B	134	THR
1	B	148	GLU
1	B	195	GLU
1	B	206	TRP

*Continued on next page...*

*Continued from previous page...*

Mol	Chain	Res	Type
1	B	232	ASN
1	B	302	ASN
1	B	309	VAL
1	B	319	THR
1	B	326	LEU
1	B	328	ARG
1	B	444	MET
1	B	462	LEU
1	B	473	ASN
1	B	475	GLN
2	C	3	LYS
2	C	7	LYS

Sometimes sidechains can be flipped to improve hydrogen bonding and reduce clashes. All (4) such sidechains are listed below:

Mol	Chain	Res	Type
1	A	350	HIS
1	A	496	GLN
1	B	177	ASN
1	B	496	GLN

### 5.3.3 RNA [i](#)

There are no RNA molecules in this entry.

## 5.4 Non-standard residues in protein, DNA, RNA chains [i](#)

There are no non-standard protein/DNA/RNA residues in this entry.

## 5.5 Carbohydrates [i](#)

There are no oligosaccharides in this entry.

## 5.6 Ligand geometry [i](#)

Of 9 ligands modelled in this entry, 3 are monoatomic - leaving 6 for Mogul analysis.

In the following table, the Counts columns list the number of bonds (or angles) for which Mogul statistics could be retrieved, the number of bonds (or angles) that are observed in the model and

the number of bonds (or angles) that are defined in the Chemical Component Dictionary. The Link column lists molecule types, if any, to which the group is linked. The Z score for a bond length (or angle) is the number of standard deviations the observed value is removed from the expected value. A bond length (or angle) with  $|Z| > 2$  is considered an outlier worth inspection. RMSZ is the root-mean-square of all Z scores of the bond lengths (or angles).

Mol	Type	Chain	Res	Link	Bond lengths			Bond angles		
					Counts	RMSZ	# Z  > 2	Counts	RMSZ	# Z  > 2
3	GOL	B	504	-	5,5,5	0.36	0	5,5,5	0.38	0
5	MYR	C	101	2	13,14,15	0.44	0	12,13,15	0.78	0
3	GOL	B	501	-	5,5,5	0.36	0	5,5,5	0.32	0
3	GOL	A	503	-	5,5,5	0.34	0	5,5,5	0.27	0
3	GOL	A	501	-	5,5,5	0.40	0	5,5,5	0.43	0
5	MYR	D	101	2	13,14,15	0.40	0	12,13,15	0.83	0

In the following table, the Chirals column lists the number of chiral outliers, the number of chiral centers analysed, the number of these observed in the model and the number defined in the Chemical Component Dictionary. Similar counts are reported in the Torsion and Rings columns. '-' means no outliers of that kind were identified.

Mol	Type	Chain	Res	Link	Chirals	Torsions	Rings
3	GOL	B	504	-	-	4/4/4/4	-
5	MYR	C	101	2	-	7/12/12/13	-
3	GOL	B	501	-	-	4/4/4/4	-
3	GOL	A	503	-	-	2/4/4/4	-
3	GOL	A	501	-	-	4/4/4/4	-
5	MYR	D	101	2	-	1/12/12/13	-

There are no bond length outliers.

There are no bond angle outliers.

There are no chirality outliers.

All (22) torsion outliers are listed below:

Mol	Chain	Res	Type	Atoms
3	A	501	GOL	O1-C1-C2-C3
3	A	501	GOL	C1-C2-C3-O3
3	A	503	GOL	O1-C1-C2-C3
3	B	501	GOL	O1-C1-C2-C3
3	B	501	GOL	C1-C2-C3-O3
3	B	504	GOL	O1-C1-C2-O2
3	B	504	GOL	O1-C1-C2-C3
5	C	101	MYR	C9-C10-C11-C12

*Continued on next page...*

*Continued from previous page...*

Mol	Chain	Res	Type	Atoms
3	A	501	GOL	O1-C1-C2-O2
3	A	503	GOL	O1-C1-C2-O2
3	B	504	GOL	C1-C2-C3-O3
3	A	501	GOL	O2-C2-C3-O3
3	B	501	GOL	O1-C1-C2-O2
3	B	501	GOL	O2-C2-C3-O3
5	C	101	MYR	C4-C5-C6-C7
5	C	101	MYR	C3-C4-C5-C6
5	C	101	MYR	C1-C2-C3-C4
5	C	101	MYR	C2-C3-C4-C5
5	D	101	MYR	C4-C5-C6-C7
5	C	101	MYR	C7-C8-C9-C10
3	B	504	GOL	O2-C2-C3-O3
5	C	101	MYR	C10-C11-C12-C13

There are no ring outliers.

5 monomers are involved in 9 short contacts:

Mol	Chain	Res	Type	Clashes	Symm-Clashes
3	B	504	GOL	1	0
5	C	101	MYR	4	0
3	A	503	GOL	2	0
3	A	501	GOL	1	0
5	D	101	MYR	1	0

## 5.7 Other polymers [i](#)

There are no such residues in this entry.

## 5.8 Polymer linkage issues [i](#)

There are no chain breaks in this entry.

## 6 Fit of model and data ⓘ

### 6.1 Protein, DNA and RNA chains ⓘ

In the following table, the column labelled ‘#RSRZ> 2’ contains the number (and percentage) of RSRZ outliers, followed by percent RSRZ outliers for the chain as percentile scores relative to all X-ray entries and entries of similar resolution. The OWAB column contains the minimum, median, 95<sup>th</sup> percentile and maximum values of the occupancy-weighted average B-factor per residue. The column labelled ‘Q< 0.9’ lists the number of (and percentage) of residues with an average occupancy less than 0.9.

Mol	Chain	Analysed	<RSRZ>	#RSRZ>2	OWAB(Å <sup>2</sup> )	Q<0.9
1	A	378/402 (94%)	-0.23	5 (1%) 75 73	9, 19, 49, 69	0
1	B	381/402 (94%)	-0.28	7 (1%) 67 65	9, 20, 49, 71	0
2	C	8/8 (100%)	0.82	0 100 100	36, 47, 51, 53	0
2	D	8/8 (100%)	0.08	1 (12%) 8 7	20, 23, 30, 49	0
All	All	775/820 (94%)	-0.24	13 (1%) 69 67	9, 20, 50, 71	0

All (13) RSRZ outliers are listed below:

Mol	Chain	Res	Type	RSRZ
1	A	409	ASN	3.0
1	B	133	ASN	2.9
1	B	314	LEU	2.8
1	A	410	HIS	2.6
1	A	185	ASP	2.6
1	B	317	ASN	2.5
1	A	173	TYR	2.3
1	B	315	SER	2.3
1	B	115	ARG	2.3
1	B	118	GLN	2.3
2	D	9	LYS	2.2
1	B	116	SER	2.1
1	A	408	MET	2.0

### 6.2 Non-standard residues in protein, DNA, RNA chains ⓘ

There are no non-standard protein/DNA/RNA residues in this entry.

### 6.3 Carbohydrates [i](#)

There are no oligosaccharides in this entry.

### 6.4 Ligands [i](#)

In the following table, the Atoms column lists the number of modelled atoms in the group and the number defined in the chemical component dictionary. The B-factors column lists the minimum, median, 95<sup>th</sup> percentile and maximum values of B factors of atoms in the group. The column labelled 'Q< 0.9' lists the number of atoms with occupancy less than 0.9.

Mol	Type	Chain	Res	Atoms	RSCC	RSR	B-factors( $\text{\AA}^2$ )	Q<0.9
3	GOL	B	504	6/6	0.89	0.17	27,28,36,42	0
3	GOL	A	503	6/6	0.91	0.11	28,37,39,43	0
3	GOL	A	501	6/6	0.93	0.09	10,17,23,26	0
4	CL	B	502	1/1	0.93	0.08	48,48,48,48	0
4	CL	A	502	1/1	0.94	0.06	40,40,40,40	0
4	CL	B	503	1/1	0.94	0.06	35,35,35,35	0
5	MYR	C	101	15/16	0.94	0.10	7,12,28,29	0
3	GOL	B	501	6/6	0.96	0.08	17,29,32,35	0
5	MYR	D	101	15/16	0.97	0.06	9,13,17,20	0

### 6.5 Other polymers [i](#)

There are no such residues in this entry.