



Full wwPDB X-ray Structure Validation Report ⓘ

Mar 5, 2026 – 10:10 AM UTC

PDB ID : 5PA9 / pdb_00005pa9
Title : Crystal Structure of Factor VIIa in complex with phenylmethanamine;hydrochloride
Authors : Stihle, M.; Mayweg, A.; Roevers, S.; Rudolph, M.G.
Deposited on : 2016-11-10
Resolution : 1.55 Å(reported)

This is a Full wwPDB X-ray Structure Validation Report for a publicly released PDB entry.

We welcome your comments at validation@mail.wwpdb.org

A user guide is available at

<https://www.wwpdb.org/validation/2017/XrayValidationReportHelp>

with specific help available everywhere you see the ⓘ symbol.

The types of validation reports are described at

<http://www.wwpdb.org/validation/2017/FAQs#types>.

The following versions of software and data (see [references ⓘ](#)) were used in the production of this report:

MolProbity	:	4-5-2 with Phenix2.0
Mogul	:	2022.3.0, CSD as543be (2022)
Xtriage (Phenix)	:	2.0
EDS	:	3.0
Percentile statistics	:	20250101.v01 (using entries in the PDB archive January 1st 2025)
CCP4	:	9.0.010 (Gargrove)
Density-Fitness	:	1.0.12
Ideal geometry (proteins)	:	Engh & Huber (2001)
Ideal geometry (DNA, RNA)	:	Parkinson et al. (1996)
Validation Pipeline (wwPDB-VP)	:	2.49

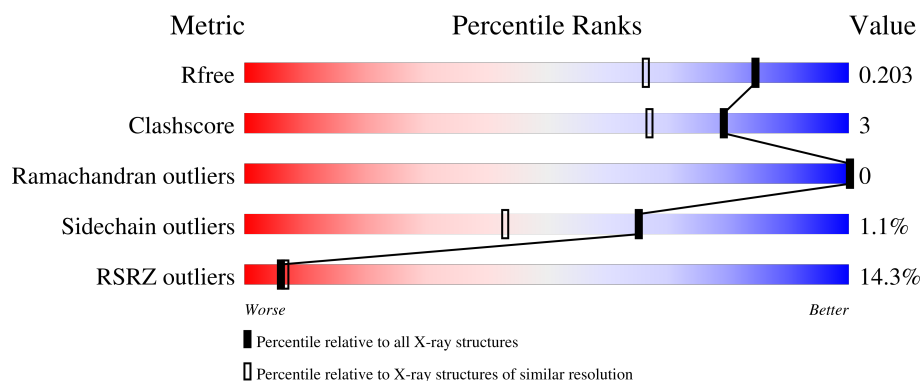
1 Overall quality at a glance

The following experimental techniques were used to determine the structure:

X-RAY DIFFRACTION

The reported resolution of this entry is 1.55 Å.

Percentile scores (ranging between 0-100) for global validation metrics of the entry are shown in the following graphic. The table shows the number of entries on which the scores are based.



Metric	Whole archive (#Entries)	Similar resolution (#Entries, resolution range(Å))
R_{free}	180053	2145 (1.56-1.56)
Clashscore	190562	2189 (1.56-1.56)
Ramachandran outliers	187476	2153 (1.56-1.56)
Sidechain outliers	187428	2150 (1.56-1.56)
RSRZ outliers	180081	2146 (1.56-1.56)

The table below summarises the geometric issues observed across the polymeric chains and their fit to the electron density. The red, orange, yellow and green segments of the lower bar indicate the fraction of residues that contain outliers for ≥ 3 , 2, 1 and 0 types of geometric quality criteria respectively. A grey segment represents the fraction of residues that are not modelled. The numeric value for each fraction is indicated below the corresponding segment, with a dot representing fractions $\leq 5\%$. The upper red bar (where present) indicates the fraction of residues that have poor fit to the electron density. The numeric value is given above the bar.

Mol	Chain	Length	Quality of chain
1	A	64	<div> <div>27%</div> <div> <div></div> <div>81%</div> <div>9%</div> <div>9%</div> </div> </div>
2	C	254	<div> <div>11%</div> <div> <div></div> <div>93%</div> <div>5%</div> </div> </div>

2 Entry composition [i](#)

There are 8 unique types of molecules in this entry. The entry contains 2908 atoms, of which 0 are hydrogens and 0 are deuteriums.

In the tables below, the ZeroOcc column contains the number of atoms modelled with zero occupancy, the AltConf column contains the number of residues with at least one atom in alternate conformation and the Trace column contains the number of residues modelled with at most 2 atoms.

- Molecule 1 is a protein called Coagulation factor VII light chain.

Mol	Chain	Residues	Atoms					ZeroOcc	AltConf	Trace
1	A	58	Total	C	N	O	S	0	4	0
			455	278	79	91	7			

- Molecule 2 is a protein called Coagulation factor VII heavy chain.

Mol	Chain	Residues	Atoms					ZeroOcc	AltConf	Trace
2	C	250	Total	C	N	O	S	0	21	0
			2071	1320	372	361	18			

- Molecule 3 is GLYCEROL (CCD ID: GOL) (formula: $C_3H_8O_3$).



Mol	Chain	Residues	Atoms			ZeroOcc	AltConf
3	A	1	Total	C	O	0	1
			12	6	6		
3	A	1	Total	C	O	0	0
			6	3	3		

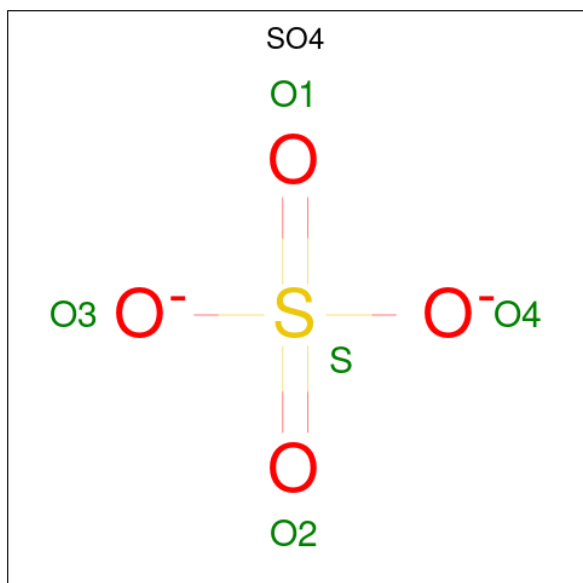
- Molecule 4 is CALCIUM ION (CCD ID: CA) (formula: Ca).

Mol	Chain	Residues	Atoms		ZeroOcc	AltConf
4	C	1	Total	Ca	0	0
			1	1		

- Molecule 5 is CHLORIDE ION (CCD ID: CL) (formula: Cl).

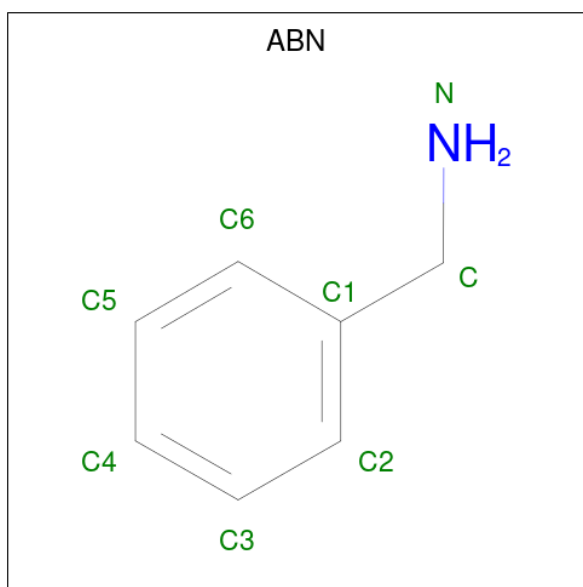
Mol	Chain	Residues	Atoms		ZeroOcc	AltConf
5	C	2	Total	Cl	0	0
			2	2		

- Molecule 6 is SULFATE ION (CCD ID: SO4) (formula: O₄S).



Mol	Chain	Residues	Atoms			ZeroOcc	AltConf
6	C	1	Total	O	S	0	0
			5	4	1		
6	C	1	Total	O	S	0	0
			5	4	1		

- Molecule 7 is BENZYLAMINE (CCD ID: ABN) (formula: C₇H₉N).



Mol	Chain	Residues	Atoms			ZeroOcc	AltConf
7	C	1	Total	C	N	0	0
			8	7	1		

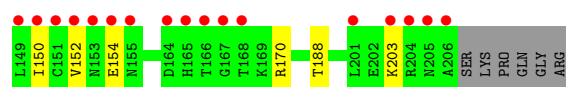
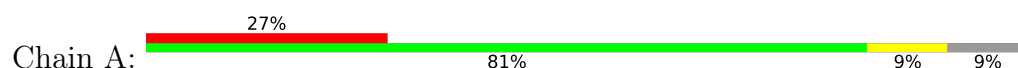
- Molecule 8 is water.

Mol	Chain	Residues	Atoms		ZeroOcc	AltConf
8	A	60	Total	O	0	0
			60	60		
8	C	283	Total	O	0	0
			283	283		

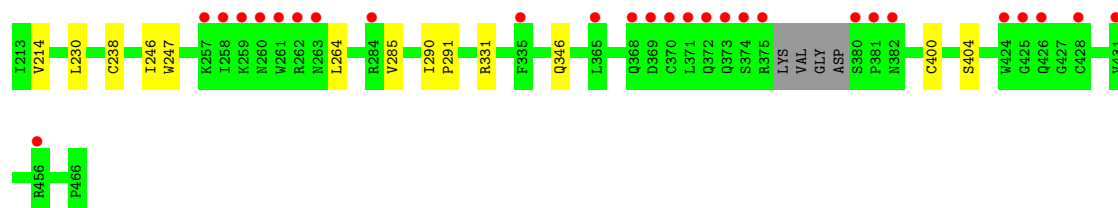
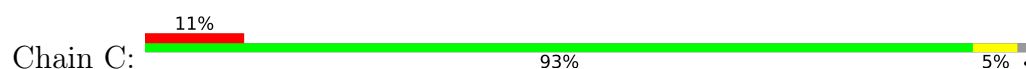
3 Residue-property plots

These plots are drawn for all protein, RNA, DNA and oligosaccharide chains in the entry. The first graphic for a chain summarises the proportions of the various outlier classes displayed in the second graphic. The second graphic shows the sequence view annotated by issues in geometry and electron density. Residues are color-coded according to the number of geometric quality criteria for which they contain at least one outlier: green = 0, yellow = 1, orange = 2 and red = 3 or more. A red dot above a residue indicates a poor fit to the electron density ($RSRZ > 2$). Stretches of 2 or more consecutive residues without any outlier are shown as a green connector. Residues present in the sample, but not in the model, are shown in grey.

- Molecule 1: Coagulation factor VII light chain



- Molecule 2: Coagulation factor VII heavy chain



4 Data and refinement statistics

Property	Value	Source
Space group	P 41 21 2	Depositor
Cell constants a, b, c, α , β , γ	95.24Å 95.24Å 116.22Å 90.00° 90.00° 90.00°	Depositor
Resolution (Å)	40.00 – 1.55 40.00 – 1.55	Depositor EDS
% Data completeness (in resolution range)	88.3 (40.00-1.55) 88.2 (40.00-1.55)	Depositor EDS
R_{merge}	0.07	Depositor
R_{sym}	(Not available)	Depositor
$\langle I/\sigma(I) \rangle$ ¹	1.71 (at 1.55Å)	Xtriage
Refinement program	REFMAC 5.2.0019	Depositor
R, R_{free}	0.184 , 0.196 0.193 , 0.203	Depositor DCC
R_{free} test set	3636 reflections (4.69%)	wwPDB-VP
Wilson B-factor (Å ²)	17.6	Xtriage
Anisotropy	0.262	Xtriage
Bulk solvent k_{sol} (e/Å ³), B_{sol} (Å ²)	0.36 , 37.8	EDS
L-test for twinning ²	$\langle L \rangle = 0.48$, $\langle L^2 \rangle = 0.31$	Xtriage
Estimated twinning fraction	No twinning to report.	Xtriage
F_o, F_c correlation	0.96	EDS
Total number of atoms	2908	wwPDB-VP
Average B, all atoms (Å ²)	24.0	wwPDB-VP

Xtriage's analysis on translational NCS is as follows: *The largest off-origin peak in the Patterson function is 3.46% of the height of the origin peak. No significant pseudotranslation is detected.*

¹Intensities estimated from amplitudes.

²Theoretical values of $\langle |L| \rangle$, $\langle L^2 \rangle$ for acentric reflections are 0.5, 0.333 respectively for untwinned datasets, and 0.375, 0.2 for perfectly twinned datasets.

5 Model quality

5.1 Standard geometry

Bond lengths and bond angles in the following residue types are not validated in this section: SO4, CA, GOL, CL, ABN

The Z score for a bond length (or angle) is the number of standard deviations the observed value is removed from the expected value. A bond length (or angle) with $|Z| > 5$ is considered an outlier worth inspection. RMSZ is the root-mean-square of all Z scores of the bond lengths (or angles).

Mol	Chain	Bond lengths		Bond angles	
		RMSZ	$\# Z > 5$	RMSZ	$\# Z > 5$
1	A	0.44	0/474	0.63	0/640
2	C	0.44	0/2173	0.63	0/2950
All	All	0.44	0/2647	0.63	0/3590

There are no bond length outliers.

There are no bond angle outliers.

There are no chirality outliers.

There are no planarity outliers.

5.2 Too-close contacts

In the following table, the Non-H and H(model) columns list the number of non-hydrogen atoms and hydrogen atoms in the chain respectively. The H(added) column lists the number of hydrogen atoms added and optimized by MolProbity. The Clashes column lists the number of clashes within the asymmetric unit, whereas Symm-Clashes lists symmetry-related clashes.

Mol	Chain	Non-H	H(model)	H(added)	Clashes	Symm-Clashes
1	A	455	0	442	5	0
2	C	2071	0	2091	10	0
3	A	18	0	24	0	0
4	C	1	0	0	0	0
5	C	2	0	0	0	0
6	C	10	0	0	0	0
7	C	8	0	9	0	0
8	A	60	0	0	2	0
8	C	283	0	0	0	0
All	All	2908	0	2566	13	0

The all-atom clashscore is defined as the number of clashes found per 1000 atoms (including

hydrogen atoms). The all-atom clashscore for this structure is 3.

All (13) close contacts within the same asymmetric unit are listed below, sorted by their clash magnitude.

Atom-1	Atom-2	Interatomic distance (Å)	Clash overlap (Å)
2:C:214:VAL:HG23	2:C:400[B]:CYS:SG	2.17	0.83
2:C:214:VAL:CG2	2:C:400[B]:CYS:SG	2.84	0.65
1:A:152:VAL:HG22	2:C:331[A]:ARG:CD	2.26	0.65
1:A:188[B]:THR:HG22	8:A:444:HOH:O	1.97	0.63
2:C:238[B]:CYS:HB2	2:C:404:SER:O	2.00	0.62
2:C:230:LEU:HD12	2:C:238[B]:CYS:SG	2.40	0.61
1:A:152:VAL:HG22	2:C:331[A]:ARG:HD2	1.90	0.54
1:A:188[B]:THR:HG21	8:A:448:HOH:O	2.13	0.48
1:A:170:ARG:HD2	1:A:170:ARG:C	2.40	0.47
2:C:246[A]:ILE:HG13	2:C:247:TRP:CD1	2.51	0.45
2:C:290:ILE:HG23	2:C:291:PRO:HD2	1.98	0.45
2:C:264[B]:LEU:HD23	2:C:285:VAL:HG11	2.02	0.41
2:C:346:GLN:HB2	2:C:400[A]:CYS:SG	2.61	0.41

There are no symmetry-related clashes.

5.3 Torsion angles ⓘ

5.3.1 Protein backbone ⓘ

In the following table, the Percentiles column shows the percent Ramachandran outliers of the chain as a percentile score with respect to all X-ray entries followed by that with respect to entries of similar resolution.

The Analysed column shows the number of residues for which the backbone conformation was analysed, and the total number of residues.

Mol	Chain	Analysed	Favoured	Allowed	Outliers	Percentiles	
1	A	60/64 (94%)	57 (95%)	3 (5%)	0	100	100
2	C	267/254 (105%)	261 (98%)	6 (2%)	0	100	100
All	All	327/318 (103%)	318 (97%)	9 (3%)	0	100	100

There are no Ramachandran outliers to report.

5.3.2 Protein sidechains [i](#)

In the following table, the Percentiles column shows the percent sidechain outliers of the chain as a percentile score with respect to all X-ray entries followed by that with respect to entries of similar resolution.

The Analysed column shows the number of residues for which the sidechain conformation was analysed, and the total number of residues.

Mol	Chain	Analysed	Rotameric	Outliers	Percentiles	
1	A	54/55 (98%)	51 (94%)	3 (6%)	19	2
2	C	233/216 (108%)	233 (100%)	0	100	100
All	All	287/271 (106%)	284 (99%)	3 (1%)	65	47

All (3) residues with a non-rotameric sidechain are listed below:

Mol	Chain	Res	Type
1	A	150	ILE
1	A	154	GLU
1	A	203	LYS

Sometimes sidechains can be flipped to improve hydrogen bonding and reduce clashes. All (3) such sidechains are listed below:

Mol	Chain	Res	Type
2	C	263	ASN
2	C	361	ASN
2	C	373	GLN

5.3.3 RNA [i](#)

There are no RNA molecules in this entry.

5.4 Non-standard residues in protein, DNA, RNA chains [i](#)

There are no non-standard protein/DNA/RNA residues in this entry.

5.5 Carbohydrates [i](#)

There are no oligosaccharides in this entry.

5.6 Ligand geometry

Of 9 ligands modelled in this entry, 3 are monoatomic - leaving 6 for Mogul analysis.

In the following table, the Counts columns list the number of bonds (or angles) for which Mogul statistics could be retrieved, the number of bonds (or angles) that are observed in the model and the number of bonds (or angles) that are defined in the Chemical Component Dictionary. The Link column lists molecule types, if any, to which the group is linked. The Z score for a bond length (or angle) is the number of standard deviations the observed value is removed from the expected value. A bond length (or angle) with $|Z| > 2$ is considered an outlier worth inspection. RMSZ is the root-mean-square of all Z scores of the bond lengths (or angles).

Mol	Type	Chain	Res	Link	Bond lengths			Bond angles		
					Counts	RMSZ	$\# Z > 2$	Counts	RMSZ	$\# Z > 2$
3	GOL	A	301[B]	-	5,5,5	0.40	0	5,5,5	0.32	0
3	GOL	A	301[A]	-	5,5,5	0.41	0	5,5,5	0.49	0
6	SO4	C	504	-	4,4,4	0.20	0	6,6,6	0.15	0
3	GOL	A	302	-	5,5,5	0.35	0	5,5,5	0.53	0
6	SO4	C	505	-	4,4,4	0.28	0	6,6,6	0.21	0
7	ABN	C	506	-	8,8,8	0.34	0	9,9,9	0.53	0

In the following table, the Chirals column lists the number of chiral outliers, the number of chiral centers analysed, the number of these observed in the model and the number defined in the Chemical Component Dictionary. Similar counts are reported in the Torsion and Rings columns. '-' means no outliers of that kind were identified.

Mol	Type	Chain	Res	Link	Chirals	Torsions	Rings
3	GOL	A	301[B]	-	-	2/4/4/4	-
3	GOL	A	301[A]	-	-	2/4/4/4	-
7	ABN	C	506	-	-	0/2/2/2	0/1/1/1
3	GOL	A	302	-	-	0/4/4/4	-

There are no bond length outliers.

There are no bond angle outliers.

There are no chirality outliers.

All (4) torsion outliers are listed below:

Mol	Chain	Res	Type	Atoms
3	A	301[A]	GOL	C1-C2-C3-O3
3	A	301[A]	GOL	O2-C2-C3-O3
3	A	301[B]	GOL	O1-C1-C2-C3
3	A	301[B]	GOL	O1-C1-C2-O2

There are no ring outliers.

No monomer is involved in short contacts.

5.7 Other polymers

There are no such residues in this entry.

5.8 Polymer linkage issues

There are no chain breaks in this entry.

6 Fit of model and data

6.1 Protein, DNA and RNA chains

In the following table, the column labelled ‘#RSRZ> 2’ contains the number (and percentage) of RSRZ outliers, followed by percent RSRZ outliers for the chain as percentile scores relative to all X-ray entries and entries of similar resolution. The OWAB column contains the minimum, median, 95th percentile and maximum values of the occupancy-weighted average B-factor per residue. The column labelled ‘Q< 0.9’ lists the number of (and percentage) of residues with an average occupancy less than 0.9.

Mol	Chain	Analysed	<RSRZ>	#RSRZ>2		OWAB(Å ²)	Q<0.9
1	A	58/64 (90%)	1.63	17 (29%)	1 1	11, 22, 45, 50	4 (6%)
2	C	250/254 (98%)	0.57	27 (10%)	11 13	10, 20, 35, 45	21 (8%)
All	All	308/318 (96%)	0.77	44 (14%)	6 7	10, 20, 42, 50	25 (8%)

All (44) RSRZ outliers are listed below:

Mol	Chain	Res	Type	RSRZ
2	C	428[A]	CYS	8.8
1	A	149	LEU	8.2
1	A	206	ALA	7.9
1	A	166	THR	7.6
1	A	150	ILE	6.4
1	A	168	THR	6.4
2	C	380	SER	6.4
1	A	205	ASN	5.4
2	C	381	PRO	5.0
1	A	152	VAL	4.9
2	C	259	LYS	4.5
2	C	426	GLN	4.3
2	C	382	ASN	4.3
2	C	261	TRP	4.1
2	C	368	GLN	3.8
2	C	375	ARG	3.8
2	C	370	CYS	3.7
1	A	153	ASN	3.7
1	A	165	HIS	3.3
2	C	372	GLN	3.2
2	C	371	LEU	3.1
2	C	369	ASP	3.1
2	C	263	ASN	3.0
2	C	260	ASN	2.9

Continued on next page...

Continued from previous page...

Mol	Chain	Res	Type	RSRZ
1	A	167	GLY	2.8
1	A	201	LEU	2.8
2	C	262[A]	ARG	2.7
1	A	203	LYS	2.7
1	A	151	CYS	2.7
1	A	154	GLU	2.6
1	A	204	ARG	2.6
2	C	424	TRP	2.5
2	C	425	GLY	2.5
2	C	258	ILE	2.4
2	C	373	GLN	2.4
1	A	164	ASP	2.4
2	C	257	LYS	2.3
2	C	374	SER	2.3
2	C	365	LEU	2.3
2	C	456[A]	ARG	2.3
2	C	431	VAL	2.2
2	C	335	PHE	2.1
1	A	155	ASN	2.1
2	C	284	ARG	2.0

6.2 Non-standard residues in protein, DNA, RNA chains [i](#)

There are no non-standard protein/DNA/RNA residues in this entry.

6.3 Carbohydrates [i](#)

There are no oligosaccharides in this entry.

6.4 Ligands [i](#)

In the following table, the Atoms column lists the number of modelled atoms in the group and the number defined in the chemical component dictionary. The B-factors column lists the minimum, median, 95th percentile and maximum values of B factors of atoms in the group. The column labelled 'Q< 0.9' lists the number of atoms with occupancy less than 0.9.

Mol	Type	Chain	Res	Atoms	RSCC	RSR	B-factors(Å ²)	Q<0.9
6	SO4	C	505	5/5	0.69	0.21	52,52,54,54	0
3	GOL	A	301[B]	6/6	0.81	0.19	21,24,25,26	6
5	CL	C	502	1/1	0.81	0.21	56,56,56,56	0

Continued on next page...

Continued from previous page...

Mol	Type	Chain	Res	Atoms	RSCC	RSR	B-factors(\AA^2)	Q<0.9
3	GOL	A	301[A]	6/6	0.81	0.19	32,33,34,35	6
3	GOL	A	302	6/6	0.84	0.16	34,37,38,39	0
5	CL	C	503	1/1	0.93	0.16	63,63,63,63	0
6	SO4	C	504	5/5	0.94	0.09	37,37,39,39	0
7	ABN	C	506	8/8	0.95	0.08	25,25,25,25	0
4	CA	C	501	1/1	0.98	0.26	33,33,33,33	0

6.5 Other polymers [i](#)

There are no such residues in this entry.