



Full wwPDB X-ray Structure Validation Report ⓘ

Mar 10, 2026 – 10:39 AM UTC

PDB ID : 5SJT / pdb_00005sjt
Title : CRYSTAL STRUCTURE OF HUMAN PHOSPHODIESTERASE 10 IN COMPLEX WITH c4(c(C(Nc2cc1nc(c1cc2)c3cccc3)=O)n(nc4)C)C(N(C)C)=O, micromolar IC₅₀=0.000153
Authors : Joseph, C.; Benz, J.; Flohr, A.; Peters, J.; Rudolph, M.G.
Deposited on : 2022-02-01
Resolution : 2.10 Å(reported)

This is a Full wwPDB X-ray Structure Validation Report for a publicly released PDB entry.

We welcome your comments at validation@mail.wwpdb.org

A user guide is available at

<https://www.wwpdb.org/validation/2017/XrayValidationReportHelp>

with specific help available everywhere you see the ⓘ symbol.

The types of validation reports are described at

<http://www.wwpdb.org/validation/2017/FAQs#types>.

The following versions of software and data (see [references ⓘ](#)) were used in the production of this report:

MolProbity	:	4-5-2 with Phenix2.0
Mogul	:	2022.3.0, CSD as543be (2022)
Xtriage (Phenix)	:	2.0
EDS	:	3.0
Buster-report	:	wwPDB partial adaption of 1.1.7 (2018)
Percentile statistics	:	20250101.v01 (using entries in the PDB archive January 1st 2025)
CCP4	:	9.0.010 (Gargrove)
Density-Fitness	:	1.0.12
Ideal geometry (proteins)	:	Engh & Huber (2001)
Ideal geometry (DNA, RNA)	:	Parkinson et al. (1996)
Validation Pipeline (wwPDB-VP)	:	2.49

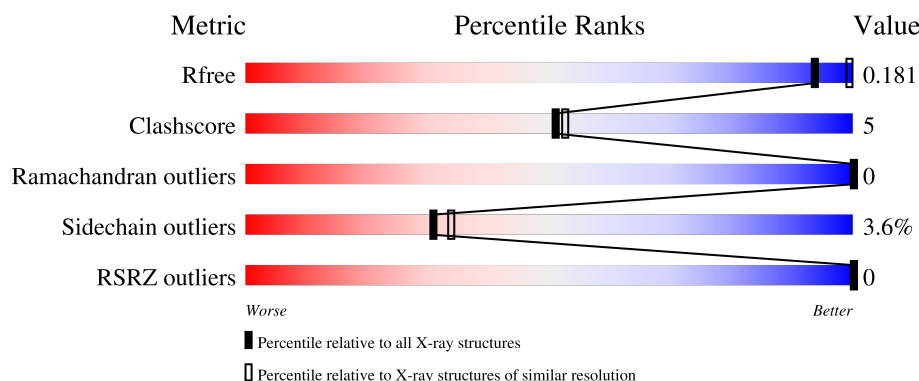
1 Overall quality at a glance

The following experimental techniques were used to determine the structure:

X-RAY DIFFRACTION


The reported resolution of this entry is 2.10 Å.

Percentile scores (ranging between 0-100) for global validation metrics of the entry are shown in the following graphic. The table shows the number of entries on which the scores are based.



Metric	Whole archive (#Entries)	Similar resolution (#Entries, resolution range(Å))
R_{free}	180053	6658 (2.10-2.10)
Clashscore	190562	7164 (2.10-2.10)
Ramachandran outliers	187476	7099 (2.10-2.10)
Sidechain outliers	187428	7100 (2.10-2.10)
RSRZ outliers	180081	6662 (2.10-2.10)

The table below summarises the geometric issues observed across the polymeric chains and their fit to the electron density. The red, orange, yellow and green segments of the lower bar indicate the fraction of residues that contain outliers for ≥ 3 , 2, 1 and 0 types of geometric quality criteria respectively. A grey segment represents the fraction of residues that are not modelled. The numeric value for each fraction is indicated below the corresponding segment, with a dot representing fractions $\leq 5\%$. The upper red bar (where present) indicates the fraction of residues that have poor fit to the electron density. The numeric value is given above the bar.

Mol	Chain	Length	Quality of chain
1	A	343	 80% 12% 9%
1	B	343	 78% 13% 8%
1	C	343	 77% 13% 9%
1	D	343	 79% 12% 9%

2 Entry composition

There are 8 unique types of molecules in this entry. The entry contains 10994 atoms, of which 0 are hydrogens and 0 are deuteriums.

In the tables below, the ZeroOcc column contains the number of atoms modelled with zero occupancy, the AltConf column contains the number of residues with at least one atom in alternate conformation and the Trace column contains the number of residues modelled with at most 2 atoms.

- Molecule 1 is a protein called cAMP and cAMP-inhibited cGMP 3',5'-cyclic phosphodiesterase 10A.

Mol	Chain	Residues	Atoms					ZeroOcc	AltConf	Trace
1	A	313	Total	C	N	O	S	0	1	0
			2549	1629	435	461	24			
1	B	315	Total	C	N	O	S	0	1	0
			2559	1635	437	463	24			
1	C	313	Total	C	N	O	S	0	2	0
			2555	1633	435	463	24			
1	D	313	Total	C	N	O	S	0	2	0
			2548	1629	434	461	24			

There are 8 discrepancies between the modelled and reference sequences:

Chain	Residue	Modelled	Actual	Comment	Reference
A	447	GLY	-	expression tag	UNP Q9Y233
A	448	SER	-	expression tag	UNP Q9Y233
B	447	GLY	-	expression tag	UNP Q9Y233
B	448	SER	-	expression tag	UNP Q9Y233
C	447	GLY	-	expression tag	UNP Q9Y233
C	448	SER	-	expression tag	UNP Q9Y233
D	447	GLY	-	expression tag	UNP Q9Y233
D	448	SER	-	expression tag	UNP Q9Y233

- Molecule 2 is ZINC ION (CCD ID: ZN) (formula: Zn).

Mol	Chain	Residues	Atoms		ZeroOcc	AltConf
2	A	1	Total	Zn	0	0
			1	1		
2	B	1	Total	Zn	0	0
			1	1		
2	C	1	Total	Zn	0	0
			1	1		
2	D	1	Total	Zn	0	0
			1	1		

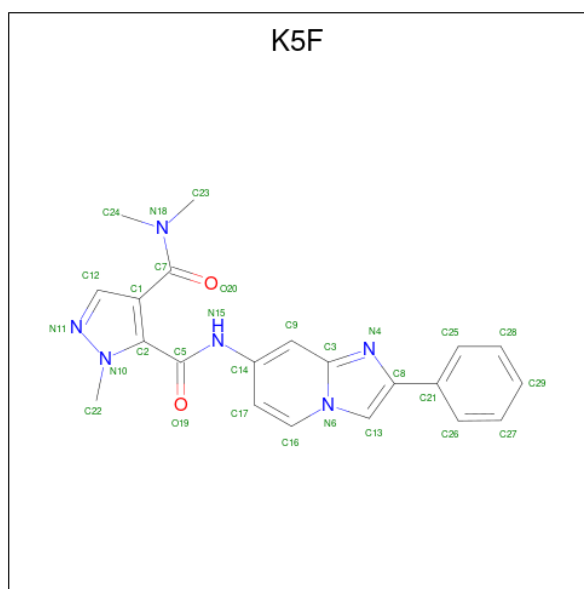
- Molecule 3 is MAGNESIUM ION (CCD ID: MG) (formula: Mg).

Mol	Chain	Residues	Atoms		ZeroOcc	AltConf
3	A	1	Total	Mg	0	0
			1	1		
3	B	1	Total	Mg	0	0
			1	1		
3	C	1	Total	Mg	0	0
			1	1		
3	D	1	Total	Mg	0	0
			1	1		

- Molecule 4 is CHLORIDE ION (CCD ID: CL) (formula: Cl).

Mol	Chain	Residues	Atoms		ZeroOcc	AltConf
4	A	1	Total	Cl	0	0
			1	1		

- Molecule 5 is N 4 ,N 4 ,1-trimethyl-N 5 -[(4R)-2-phenylimidazo[1,2-a]pyridin-7-yl]-1H-pyrazole-4,5-dicarboxamide (CCD ID: K5F) (formula: C₂₁H₂₀N₆O₂) (labeled as "Ligand of Interest" by depositor).



Mol	Chain	Residues	Atoms				ZeroOcc	AltConf
5	A	1	Total	C	N	O	0	0
			29	21	6	2		
5	B	1	Total	C	N	O	0	0
			29	21	6	2		
5	C	1	Total	C	N	O	0	0
			29	21	6	2		

Continued on next page...

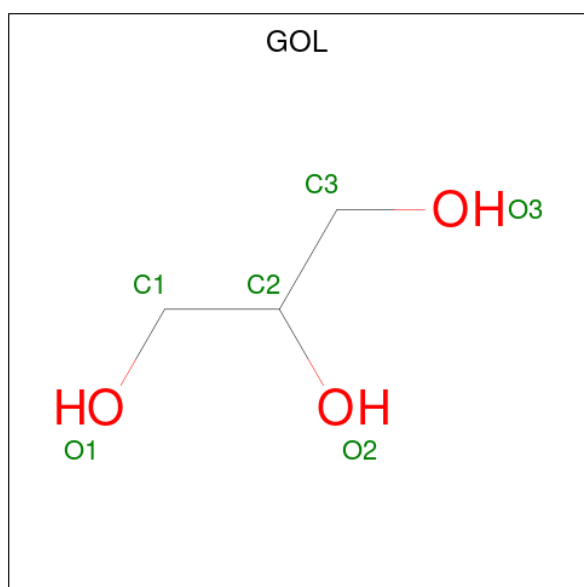
Continued from previous page...

Mol	Chain	Residues	Atoms				ZeroOcc	AltConf
5	D	1	Total	C	N	O	0	0
			29	21	6	2		

- Molecule 6 is PRASEODYMIUM ION (CCD ID: PR) (formula: Pr).

Mol	Chain	Residues	Atoms		ZeroOcc	AltConf
6	B	5	Total	Pr	0	0
			5	5		
6	C	3	Total	Pr	0	0
			3	3		

- Molecule 7 is GLYCEROL (CCD ID: GOL) (formula: C₃H₈O₃).



Mol	Chain	Residues	Atoms			ZeroOcc	AltConf
7	B	1	Total	C	O	0	0
			6	3	3		

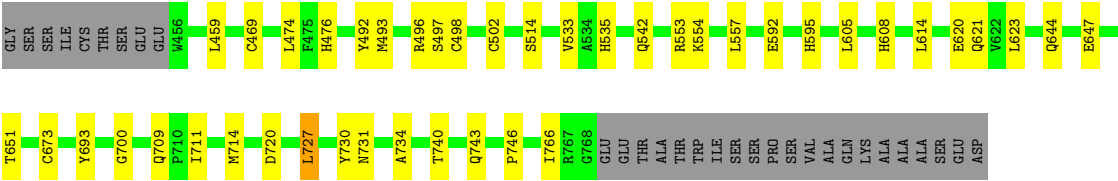
- Molecule 8 is water.

Mol	Chain	Residues	Atoms		ZeroOcc	AltConf
8	A	161	Total	O	0	0
			161	161		
8	B	177	Total	O	0	0
			177	177		
8	C	180	Total	O	0	0
			180	180		

Continued on next page...

Continued from previous page...

Mol	Chain	Residues	Atoms		ZeroOcc	AltConf
8	D	126	Total 126	O 126	0	0



4 Data and refinement statistics

Property	Value	Source
Space group	H 3	Depositor
Cell constants a, b, c, α , β , γ	134.64Å 134.64Å 235.00Å 90.00° 90.00° 120.00°	Depositor
Resolution (Å)	38.87 – 2.10 38.87 – 2.10	Depositor EDS
% Data completeness (in resolution range)	99.1 (38.87-2.10) 98.3 (38.87-2.10)	Depositor EDS
R_{merge}	0.12	Depositor
R_{sym}	(Not available)	Depositor
$\langle I/\sigma(I) \rangle$ ¹	1.36 (at 2.10Å)	Xtriage
Refinement program	REFMAC 5.8.0258	Depositor
R, R_{free}	0.160 , 0.179 (Not available) , 0.181	Depositor DCC
R_{free} test set	4600 reflections (4.96%)	wwPDB-VP
Wilson B-factor (Å ²)	30.8	Xtriage
Anisotropy	0.030	Xtriage
Bulk solvent k_{sol} (e/Å ³), B_{sol} (Å ²)	0.33 , 28.2	EDS
L-test for twinning ²	$\langle L \rangle = 0.40$, $\langle L^2 \rangle = 0.22$	Xtriage
Estimated twinning fraction	0.326 for h,-h-k,-l	Xtriage
Reported twinning fraction	0.662 for H, K, L 0.338 for K, H, -L	Depositor
Outliers	0 of 91867 reflections	Xtriage
F_o, F_c correlation	0.97	EDS
Total number of atoms	10994	wwPDB-VP
Average B, all atoms (Å ²)	36.0	wwPDB-VP

Xtriage's analysis on translational NCS is as follows: *The largest off-origin peak in the Patterson function is 2.66% of the height of the origin peak. No significant pseudotranslation is detected.*

¹Intensities estimated from amplitudes.

²Theoretical values of $\langle |L| \rangle$, $\langle L^2 \rangle$ for acentric reflections are 0.5, 0.333 respectively for untwinned datasets, and 0.375, 0.2 for perfectly twinned datasets.

5 Model quality [i](#)

5.1 Standard geometry [i](#)

Bond lengths and bond angles in the following residue types are not validated in this section: PR, CL, MG, GOL, CME, K5F, ZN

The Z score for a bond length (or angle) is the number of standard deviations the observed value is removed from the expected value. A bond length (or angle) with $|Z| > 5$ is considered an outlier worth inspection. RMSZ is the root-mean-square of all Z scores of the bond lengths (or angles).

Mol	Chain	Bond lengths		Bond angles	
		RMSZ	$\# Z > 5$	RMSZ	$\# Z > 5$
1	A	1.17	4/2603 (0.2%)	1.19	0/3521
1	B	1.19	5/2613 (0.2%)	1.20	0/3535
1	C	1.14	1/2612 (0.0%)	1.19	0/3533
1	D	1.11	0/2605	1.17	0/3525
All	All	1.15	10/10433 (0.1%)	1.19	0/14114

All (10) bond length outliers are listed below:

Mol	Chain	Res	Type	Atoms	Z	Observed(Å)	Ideal(Å)
1	B	567	HIS	CE1-NE2	7.28	1.39	1.32
1	A	481	PRO	C-O	-6.22	1.16	1.24
1	B	683	PRO	C-O	-6.20	1.16	1.24
1	C	617	SER	C-O	-5.83	1.17	1.24
1	A	580	HIS	CE1-NE2	5.55	1.38	1.32
1	B	631	ILE	C-O	5.46	1.30	1.24
1	A	691	ASP	C-O	5.45	1.30	1.24
1	A	693	TYR	C-O	-5.24	1.17	1.24
1	B	733	VAL	C-O	-5.17	1.18	1.24
1	B	540	ILE	C-O	5.02	1.30	1.24

There are no bond angle outliers.

There are no chirality outliers.

There are no planarity outliers.

5.2 Too-close contacts [i](#)

In the following table, the Non-H and H(model) columns list the number of non-hydrogen atoms and hydrogen atoms in the chain respectively. The H(added) column lists the number of hydrogen

atoms added and optimized by MolProbity. The Clashes column lists the number of clashes within the asymmetric unit, whereas Symm-Clashes lists symmetry-related clashes.

Mol	Chain	Non-H	H(model)	H(added)	Clashes	Symm-Clashes
1	A	2549	0	2526	23	0
1	B	2559	0	2528	25	0
1	C	2555	0	2530	28	0
1	D	2548	0	2523	28	0
2	A	1	0	0	0	0
2	B	1	0	0	0	0
2	C	1	0	0	0	0
2	D	1	0	0	0	0
3	A	1	0	0	0	0
3	B	1	0	0	0	0
3	C	1	0	0	0	0
3	D	1	0	0	0	0
4	A	1	0	0	0	0
5	A	29	0	0	1	0
5	B	29	0	0	2	0
5	C	29	0	0	3	0
5	D	29	0	0	2	0
6	B	5	0	0	0	0
6	C	3	0	0	0	0
7	B	6	0	8	0	0
8	A	161	0	0	2	2
8	B	177	0	0	3	2
8	C	180	0	0	4	0
8	D	126	0	0	5	2
All	All	10994	0	10115	107	3

The all-atom clashscore is defined as the number of clashes found per 1000 atoms (including hydrogen atoms). The all-atom clashscore for this structure is 5.

All (107) close contacts within the same asymmetric unit are listed below, sorted by their clash magnitude.

Atom-1	Atom-2	Interatomic distance (Å)	Clash overlap (Å)
1:A:461:GLN:HE22	1:A:500:THR:CG2	1.89	0.85
1:C:469:CYS:SG	8:C:1043:HOH:O	2.35	0.83
1:A:461:GLN:HE22	1:A:500:THR:HG21	1.43	0.83
1:A:469:CYS:SG	8:A:1030:HOH:O	2.36	0.82
1:A:568[B]:ARG:HG2	1:A:568[B]:ARG:HH11	1.48	0.77
1:D:469:CYS:SG	8:D:1019:HOH:O	2.43	0.76
1:D:727:LEU:HD12	1:D:766:ILE:HD12	1.68	0.76

Continued on next page...

Continued from previous page...

Atom-1	Atom-2	Interatomic distance (Å)	Clash overlap (Å)
1:A:461:GLN:NE2	1:A:500:THR:HG21	2.00	0.75
1:B:753:LYS:NZ	8:B:901:HOH:O	2.20	0.72
1:C:711:ILE:HD11	1:C:713:MET:HE2	1.75	0.68
1:D:714:MET:HE2	8:D:921:HOH:O	1.93	0.68
5:A:804:K5F:O19	5:A:804:K5F:C9	2.40	0.66
1:A:730:TYR:HA	1:A:734:ALA:HB3	1.79	0.65
1:A:675:LEU:O	1:A:678:VAL:HG22	1.97	0.64
1:D:727:LEU:HD12	1:D:766:ILE:CD1	2.28	0.64
1:C:727:LEU:HD21	1:C:763:GLU:HG3	1.79	0.64
1:D:727:LEU:CD2	1:D:731:ASN:HD21	2.11	0.63
1:D:740:THR:HA	1:D:743:GLN:HE21	1.64	0.63
1:B:711:ILE:HD11	1:B:713:MET:HE2	1.81	0.62
1:C:714:MET:HE2	8:C:1002:HOH:O	1.99	0.62
1:D:498:CYS:SG	1:D:502:CYS:SG	3.00	0.59
1:C:693:TYR:OH	5:C:806:K5F:N4	2.36	0.58
1:C:700:GLY:HA3	1:C:714:MET:O	2.04	0.57
1:B:548:PHE:O	1:B:553:ARG:NH2	2.38	0.57
1:D:492:TYR:CZ	1:D:496:ARG:HD2	2.40	0.57
5:D:803:K5F:O19	5:D:803:K5F:C9	2.50	0.57
1:B:470:LYS:HE2	1:D:746:PRO:HB3	1.85	0.56
1:A:575:LEU:HD11	1:A:591:MET:SD	2.45	0.56
1:C:568[A]:ARG:NH1	8:C:902:HOH:O	2.38	0.56
1:A:568[B]:ARG:HG2	1:A:568[B]:ARG:NH1	2.19	0.56
1:D:766:ILE:HG22	1:D:766:ILE:O	2.07	0.55
1:D:727:LEU:CD2	1:D:731:ASN:ND2	2.69	0.55
1:D:497:SER:HA	1:D:542:GLN:NE2	2.22	0.55
1:B:483:GLU:HG2	1:B:486:TRP:CH2	2.42	0.54
1:C:575:LEU:HD11	1:C:591:MET:SD	2.47	0.54
1:B:546:THR:HG21	8:D:934:HOH:O	2.07	0.53
1:C:461:GLN:NE2	1:C:500:THR:HG21	2.23	0.53
1:D:620:GLU:OE1	8:D:901:HOH:O	2.18	0.51
1:D:493:MET:SD	1:D:535:HIS:HA	2.51	0.51
1:C:727:LEU:HD23	1:C:759:LEU:HD12	1.93	0.51
1:A:731:ASN:ND2	8:A:901:HOH:O	2.18	0.51
5:B:809:K5F:C24	5:B:809:K5F:C12	2.88	0.51
1:B:684:VAL:HG22	1:C:705:LYS:HG2	1.92	0.50
1:B:727:LEU:HD12	1:B:766:ILE:CD1	2.42	0.50
1:D:727:LEU:HD23	1:D:731:ASN:ND2	2.27	0.50
1:D:498:CYS:HB3	1:D:553:ARG:HB3	1.94	0.49
1:D:693:TYR:OH	5:D:803:K5F:N4	2.44	0.49
1:D:554:LYS:NZ	1:D:614:LEU:HD11	2.28	0.49

Continued on next page...

Continued from previous page...

Atom-1	Atom-2	Interatomic distance (Å)	Clash overlap (Å)
1:C:461:GLN:HE21	1:C:500:THR:HG21	1.76	0.48
1:A:461:GLN:HE22	1:A:500:THR:HG22	1.75	0.48
1:B:492:TYR:CZ	1:B:496:ARG:HD2	2.49	0.48
1:A:466:VAL:HG13	1:A:470:LYS:HE3	1.96	0.48
1:C:486:TRP:N	1:C:487:PRO:CD	2.77	0.47
1:B:565:LEU:O	1:B:595:HIS:ND1	2.45	0.47
1:C:727:LEU:HD21	1:C:763:GLU:CG	2.43	0.47
1:B:727:LEU:HD23	1:B:759:LEU:HD11	1.95	0.47
1:C:471:GLU:HB3	1:C:477:PHE:CD1	2.49	0.47
1:C:638:TYR:CD1	1:C:671:THR:HG21	2.50	0.47
1:C:727:LEU:CD1	1:C:766:ILE:HD12	2.45	0.47
1:B:730:TYR:HA	1:B:734:ALA:HB3	1.97	0.46
1:C:697:TRP:CZ2	1:C:719:LYS:HG3	2.50	0.46
1:A:498:CYS:HG	1:A:502:CYS:CB	2.28	0.46
1:B:551:LEU:HD22	1:B:622:VAL:HB	1.98	0.46
1:A:727:LEU:HD22	1:A:759:LEU:HD12	1.98	0.46
1:D:533:VAL:HG13	1:D:673:CYS:HB3	1.98	0.46
1:B:697:TRP:CH2	1:B:719:LYS:HG3	2.50	0.45
1:A:498:CYS:SG	1:A:502:CYS:SG	3.11	0.45
1:C:619:TYR:O	1:C:622:VAL:HG12	2.16	0.45
1:A:727:LEU:HD11	1:A:766:ILE:HD12	1.99	0.45
1:C:602:ILE:HA	1:C:605:LEU:HD22	1.97	0.45
5:C:806:K5F:O19	5:C:806:K5F:C9	2.63	0.45
1:C:730:TYR:HA	1:C:734:ALA:HB3	1.99	0.44
1:A:568[B]:ARG:NH1	1:A:568[B]:ARG:CG	2.80	0.44
1:D:727:LEU:HD23	1:D:731:ASN:HD21	1.83	0.44
1:B:700:GLY:HA3	1:B:714:MET:O	2.18	0.44
1:B:513:MET:HE3	8:B:986:HOH:O	2.18	0.44
5:C:806:K5F:C24	5:C:806:K5F:C12	2.96	0.43
1:B:721:GLU:HB2	5:B:809:K5F:C29	2.47	0.43
1:B:727:LEU:HD22	1:B:731:ASN:HD21	1.83	0.43
1:A:749:GLU:N	1:A:750:PRO:CD	2.82	0.43
1:D:647:GLU:O	1:D:651:THR:HG23	2.18	0.43
1:B:577:LYS:HD3	1:B:703:MET:HE1	2.00	0.43
1:D:474:LEU:HD13	1:D:476:HIS:CE1	2.53	0.43
1:A:735:ILE:N	1:A:736:PRO:CD	2.82	0.42
1:A:498:CYS:SG	1:A:554:LYS:HG2	2.59	0.42
1:C:722:VAL:N	1:C:723:PRO:CD	2.81	0.42
1:C:477:PHE:HB3	1:C:535:HIS:CE1	2.54	0.42
1:B:727:LEU:HD22	1:B:731:ASN:ND2	2.34	0.42
1:C:503:PHE:CE2	1:C:610:ILE:HD12	2.55	0.42

Continued on next page...

Continued from previous page...

Atom-1	Atom-2	Interatomic distance (Å)	Clash overlap (Å)
1:A:765:VAL:HG22	1:A:770:GLU:HG3	2.02	0.41
1:A:748:THR:C	1:A:750:PRO:HD2	2.45	0.41
1:B:727:LEU:HD12	1:B:766:ILE:HD13	2.02	0.41
1:C:672:ALA:HB2	1:C:741:LEU:HD22	2.01	0.41
1:B:471:GLU:HB3	1:B:477:PHE:CD1	2.55	0.41
1:B:682:TRP:HB3	1:B:683:PRO:HD3	2.02	0.41
1:B:575:LEU:HD13	1:B:580:HIS:CG	2.56	0.41
1:D:554:LYS:HZ2	1:D:614:LEU:HD11	1.85	0.41
1:D:700:GLY:HA3	1:D:714:MET:O	2.21	0.41
1:C:660:SER:O	1:C:664:ARG:HG3	2.21	0.41
1:A:542:GLN:NE2	1:A:542:GLN:HA	2.36	0.40
1:C:492:TYR:CE2	1:C:496:ARG:HD2	2.56	0.40
1:D:514:SER:OG	1:D:608:HIS:NE2	2.51	0.40
1:C:553:ARG:NH1	8:C:912:HOH:O	2.54	0.40
1:D:592:GLU:HA	1:D:595:HIS:CD2	2.56	0.40
1:B:507:LYS:NZ	8:B:921:HOH:O	2.54	0.40
1:D:542:GLN:NE2	8:D:914:HOH:O	2.54	0.40
1:D:730:TYR:HA	1:D:734:ALA:HB3	2.04	0.40

All (3) symmetry-related close contacts are listed below. The label for Atom-2 includes the symmetry operator and encoded unit-cell translations to be applied.

Atom-1	Atom-2	Interatomic distance (Å)	Clash overlap (Å)
8:B:1068:HOH:O	8:D:947:HOH:O[8_544]	2.09	0.11
8:A:1003:HOH:O	8:D:1026:HOH:O[7_554]	2.18	0.02
8:A:983:HOH:O	8:B:935:HOH:O[2_555]	2.19	0.01

5.3 Torsion angles [i](#)

5.3.1 Protein backbone [i](#)

In the following table, the Percentiles column shows the percent Ramachandran outliers of the chain as a percentile score with respect to all X-ray entries followed by that with respect to entries of similar resolution.

The Analysed column shows the number of residues for which the backbone conformation was analysed, and the total number of residues.

Mol	Chain	Analysed	Favoured	Allowed	Outliers	Percentiles
1	A	311/343 (91%)	304 (98%)	7 (2%)	0	100 100

Continued on next page...

Continued from previous page...

Mol	Chain	Analysed	Favoured	Allowed	Outliers	Percentiles	
1	B	313/343 (91%)	307 (98%)	6 (2%)	0	100	100
1	C	312/343 (91%)	306 (98%)	6 (2%)	0	100	100
1	D	312/343 (91%)	305 (98%)	7 (2%)	0	100	100
All	All	1248/1372 (91%)	1222 (98%)	26 (2%)	0	100	100

There are no Ramachandran outliers to report.

5.3.2 Protein sidechains ⓘ

In the following table, the Percentiles column shows the percent sidechain outliers of the chain as a percentile score with respect to all X-ray entries followed by that with respect to entries of similar resolution.

The Analysed column shows the number of residues for which the sidechain conformation was analysed, and the total number of residues.

Mol	Chain	Analysed	Rotameric	Outliers	Percentiles	
1	A	282/305 (92%)	273 (97%)	9 (3%)	34	38
1	B	282/305 (92%)	270 (96%)	12 (4%)	26	27
1	C	283/305 (93%)	274 (97%)	9 (3%)	34	38
1	D	282/305 (92%)	271 (96%)	11 (4%)	28	31
All	All	1129/1220 (92%)	1088 (96%)	41 (4%)	31	34

All (41) residues with a non-rotameric sidechain are listed below:

Mol	Chain	Res	Type
1	A	471	GLU
1	A	496	ARG
1	A	553	ARG
1	A	605	LEU
1	A	622	VAL
1	A	644	GLN
1	A	709	GLN
1	A	720	ASP
1	A	722	VAL
1	B	459	LEU
1	B	471	GLU
1	B	501	SER
1	B	547	LEU

Continued on next page...

Continued from previous page...

Mol	Chain	Res	Type
1	B	575	LEU
1	B	587	SER
1	B	605	LEU
1	B	622	VAL
1	B	650	GLN
1	B	709	GLN
1	B	720	ASP
1	B	727	LEU
1	C	459	LEU
1	C	471	GLU
1	C	504	GLU
1	C	517	LYS
1	C	547	LEU
1	C	605	LEU
1	C	621	GLN
1	C	709	GLN
1	C	722	VAL
1	D	459	LEU
1	D	557	LEU
1	D	605	LEU
1	D	621	GLN
1	D	623	LEU
1	D	644	GLN
1	D	709	GLN
1	D	711	ILE
1	D	720[A]	ASP
1	D	720[B]	ASP
1	D	727	LEU

Sometimes sidechains can be flipped to improve hydrogen bonding and reduce clashes. All (36) such sidechains are listed below:

Mol	Chain	Res	Type
1	A	461	GLN
1	A	484	ASN
1	A	542	GLN
1	A	604	GLN
1	A	644	GLN
1	A	659	GLN
1	A	709	GLN
1	B	484	ASN
1	B	544	ASN
1	B	576	GLN

Continued on next page...

Continued from previous page...

Mol	Chain	Res	Type
1	B	598	GLN
1	B	604	GLN
1	B	644	GLN
1	B	659	GLN
1	B	709	GLN
1	B	726	GLN
1	B	731	ASN
1	B	743	GLN
1	B	761	GLN
1	C	542	GLN
1	C	576	GLN
1	C	604	GLN
1	C	621	GLN
1	C	743	GLN
1	D	476	HIS
1	D	484	ASN
1	D	495	HIS
1	D	542	GLN
1	D	576	GLN
1	D	604	GLN
1	D	621	GLN
1	D	644	GLN
1	D	709	GLN
1	D	731	ASN
1	D	743	GLN
1	D	761	GLN

5.3.3 RNA ⓘ

There are no RNA molecules in this entry.

5.4 Non-standard residues in protein, DNA, RNA chains ⓘ

4 non-standard protein/DNA/RNA residues are modelled in this entry.

In the following table, the Counts columns list the number of bonds (or angles) for which Mogul statistics could be retrieved, the number of bonds (or angles) that are observed in the model and the number of bonds (or angles) that are defined in the Chemical Component Dictionary. The Link column lists molecule types, if any, to which the group is linked. The Z score for a bond length (or angle) is the number of standard deviations the observed value is removed from the expected value. A bond length (or angle) with $|Z| > 2$ is considered an outlier worth inspection. RMSZ is the root-mean-square of all Z scores of the bond lengths (or angles).

Mol	Type	Chain	Res	Link	Bond lengths			Bond angles		
					Counts	RMSZ	# Z > 2	Counts	RMSZ	# Z > 2
1	CME	C	509	1	8,9,10	0.55	0	6,9,11	0.84	0
1	CME	A	509	1	8,9,10	0.72	0	6,9,11	0.88	0
1	CME	B	509	1	8,9,10	0.25	0	6,9,11	0.64	0
1	CME	D	509	1	8,9,10	0.49	0	6,9,11	0.91	0

In the following table, the Chirals column lists the number of chiral outliers, the number of chiral centers analysed, the number of these observed in the model and the number defined in the Chemical Component Dictionary. Similar counts are reported in the Torsion and Rings columns. '-' means no outliers of that kind were identified.

Mol	Type	Chain	Res	Link	Chirals	Torsions	Rings
1	CME	C	509	1	-	2/5/8/10	-
1	CME	A	509	1	-	1/5/8/10	-
1	CME	B	509	1	-	1/5/8/10	-
1	CME	D	509	1	-	2/5/8/10	-

There are no bond length outliers.

There are no bond angle outliers.

There are no chirality outliers.

All (6) torsion outliers are listed below:

Mol	Chain	Res	Type	Atoms
1	B	509	CME	SD-CE-CZ-OH
1	C	509	CME	CE-SD-SG-CB
1	D	509	CME	N-CA-CB-SG
1	C	509	CME	CZ-CE-SD-SG
1	A	509	CME	CZ-CE-SD-SG
1	D	509	CME	CZ-CE-SD-SG

There are no ring outliers.

No monomer is involved in short contacts.

5.5 Carbohydrates [i](#)

There are no oligosaccharides in this entry.

5.6 Ligand geometry [i](#)

Of 22 ligands modelled in this entry, 17 are monoatomic - leaving 5 for Mogul analysis.

In the following table, the Counts columns list the number of bonds (or angles) for which Mogul statistics could be retrieved, the number of bonds (or angles) that are observed in the model and the number of bonds (or angles) that are defined in the Chemical Component Dictionary. The Link column lists molecule types, if any, to which the group is linked. The Z score for a bond length (or angle) is the number of standard deviations the observed value is removed from the expected value. A bond length (or angle) with $|Z| > 2$ is considered an outlier worth inspection. RMSZ is the root-mean-square of all Z scores of the bond lengths (or angles).

Mol	Type	Chain	Res	Link	Bond lengths			Bond angles		
					Counts	RMSZ	# $ Z > 2$	Counts	RMSZ	# $ Z > 2$
5	K5F	D	803	-	30,32,32	1.35	3 (10%)	39,46,46	2.65	12 (30%)
7	GOL	B	808	-	5,5,5	0.24	0	5,5,5	0.59	0
5	K5F	B	809	-	30,32,32	1.27	4 (13%)	39,46,46	2.71	11 (28%)
5	K5F	C	806	-	30,32,32	1.36	6 (20%)	39,46,46	2.57	12 (30%)
5	K5F	A	804	-	30,32,32	1.36	3 (10%)	39,46,46	2.40	13 (33%)

In the following table, the Chirals column lists the number of chiral outliers, the number of chiral centers analysed, the number of these observed in the model and the number defined in the Chemical Component Dictionary. Similar counts are reported in the Torsion and Rings columns. '-' means no outliers of that kind were identified.

Mol	Type	Chain	Res	Link	Chirals	Torsions	Rings
5	K5F	D	803	-	-	1/20/20/20	0/4/4/4
7	GOL	B	808	-	-	1/4/4/4	-
5	K5F	B	809	-	-	1/20/20/20	0/4/4/4
5	K5F	C	806	-	-	2/20/20/20	0/4/4/4
5	K5F	A	804	-	-	1/20/20/20	0/4/4/4

All (16) bond length outliers are listed below:

Mol	Chain	Res	Type	Atoms	Z	Observed(Å)	Ideal(Å)
5	A	804	K5F	C12-C1	-4.46	1.35	1.41
5	A	804	K5F	C7-N18	3.74	1.38	1.34
5	C	806	K5F	C8-N4	-3.48	1.33	1.39
5	D	803	K5F	N10-N11	3.12	1.41	1.36
5	C	806	K5F	N10-N11	3.11	1.41	1.36
5	D	803	K5F	C7-N18	2.90	1.37	1.34
5	B	809	K5F	C8-N4	-2.85	1.34	1.39
5	A	804	K5F	O19-C5	-2.82	1.18	1.23
5	C	806	K5F	C13-N6	2.62	1.42	1.37
5	C	806	K5F	C12-N11	-2.49	1.29	1.32
5	D	803	K5F	C12-C1	-2.35	1.38	1.41
5	B	809	K5F	C27-C26	2.22	1.42	1.38

Continued on next page...

Continued from previous page...

Mol	Chain	Res	Type	Atoms	Z	Observed(Å)	Ideal(Å)
5	B	809	K5F	N10-N11	2.09	1.39	1.36
5	B	809	K5F	O20-C7	-2.07	1.18	1.23
5	C	806	K5F	C12-C1	-2.06	1.38	1.41
5	C	806	K5F	C7-N18	-2.00	1.31	1.34

All (48) bond angle outliers are listed below:

Mol	Chain	Res	Type	Atoms	Z	Observed(°)	Ideal(°)
5	B	809	K5F	C8-N4-C3	10.27	110.39	105.64
5	C	806	K5F	C8-N4-C3	9.69	110.12	105.64
5	D	803	K5F	C8-N4-C3	9.31	109.95	105.64
5	D	803	K5F	N6-C3-N4	-7.67	106.45	110.64
5	A	804	K5F	C8-N4-C3	7.23	108.99	105.64
5	B	809	K5F	N6-C3-N4	-5.86	107.44	110.64
5	B	809	K5F	C12-C1-C2	5.57	108.33	104.56
5	A	804	K5F	C12-N11-N10	5.47	110.27	105.06
5	C	806	K5F	N6-C3-N4	-5.47	107.66	110.64
5	A	804	K5F	N6-C3-N4	-4.99	107.92	110.64
5	C	806	K5F	C21-C8-N4	4.69	127.13	119.95
5	C	806	K5F	C12-C1-C2	4.68	107.73	104.56
5	D	803	K5F	C21-C8-N4	4.59	126.98	119.95
5	A	804	K5F	C21-C8-N4	4.35	126.62	119.95
5	A	804	K5F	C1-C7-N18	4.32	123.97	118.42
5	B	809	K5F	C21-C8-N4	3.95	126.00	119.95
5	B	809	K5F	C12-N11-N10	3.95	108.82	105.06
5	B	809	K5F	C13-C8-N4	-3.81	107.10	110.75
5	C	806	K5F	C21-C8-C13	-3.72	123.96	129.65
5	A	804	K5F	O19-C5-N15	-3.70	116.26	122.88
5	D	803	K5F	O20-C7-N18	-3.50	116.76	122.62
5	B	809	K5F	C1-C12-N11	-3.34	108.30	112.45
5	D	803	K5F	C13-C8-N4	-3.21	107.67	110.75
5	D	803	K5F	C8-C13-N6	3.19	107.56	106.01
5	D	803	K5F	C12-C1-C2	3.15	106.69	104.56
5	D	803	K5F	C21-C8-C13	-3.14	124.85	129.65
5	A	804	K5F	C21-C8-C13	-3.13	124.87	129.65
5	B	809	K5F	C2-C5-N15	2.75	120.39	116.31
5	D	803	K5F	C12-N11-N10	2.73	107.66	105.06
5	A	804	K5F	C13-N6-C3	2.69	108.42	106.90
5	B	809	K5F	C12-C1-C7	-2.58	121.77	129.49
5	A	804	K5F	C2-C5-N15	2.57	120.13	116.31
5	C	806	K5F	C9-C14-N15	-2.57	120.28	126.42
5	D	803	K5F	C13-N6-C3	2.41	108.26	106.90

Continued on next page...

Continued from previous page...

Mol	Chain	Res	Type	Atoms	Z	Observed(°)	Ideal(°)
5	A	804	K5F	O20-C7-N18	-2.40	118.60	122.62
5	D	803	K5F	C1-C7-N18	2.38	121.48	118.42
5	C	806	K5F	O20-C7-N18	-2.36	118.67	122.62
5	C	806	K5F	C1-C7-N18	2.36	121.45	118.42
5	A	804	K5F	C13-C8-N4	-2.34	108.51	110.75
5	A	804	K5F	C1-C12-N11	-2.30	109.60	112.45
5	D	803	K5F	C22-N10-N11	2.29	123.79	119.22
5	C	806	K5F	C27-C26-C21	-2.29	118.11	120.36
5	B	809	K5F	O19-C5-C2	-2.21	117.65	121.96
5	B	809	K5F	C8-C13-N6	2.19	107.07	106.01
5	A	804	K5F	C9-C14-N15	-2.13	121.32	126.42
5	C	806	K5F	C12-N11-N10	2.06	107.02	105.06
5	C	806	K5F	C8-C13-N6	2.03	107.00	106.01
5	C	806	K5F	C28-C25-C21	2.01	122.34	120.36

There are no chirality outliers.

All (6) torsion outliers are listed below:

Mol	Chain	Res	Type	Atoms
7	B	808	GOL	O1-C1-C2-C3
5	A	804	K5F	C12-C1-C7-O20
5	B	809	K5F	C12-C1-C7-O20
5	C	806	K5F	C12-C1-C7-O20
5	D	803	K5F	C12-C1-C7-O20
5	C	806	K5F	C2-C1-C7-O20

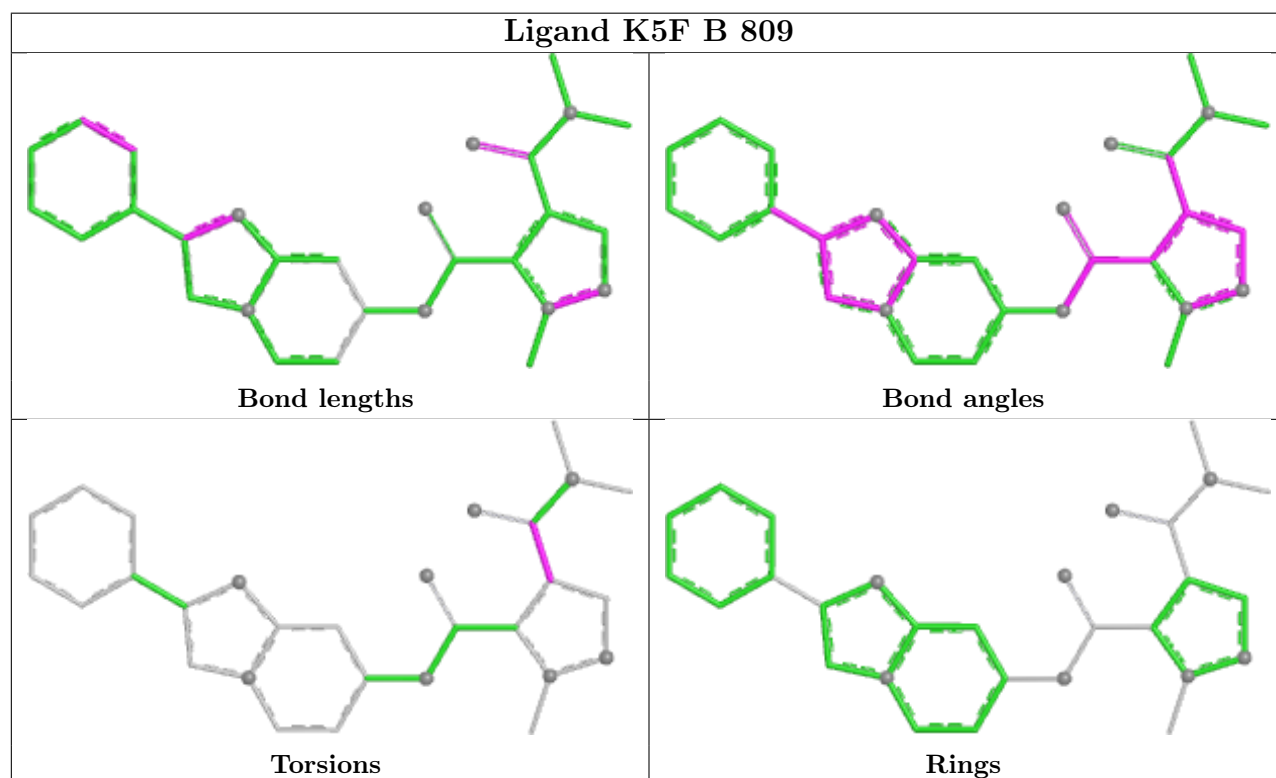
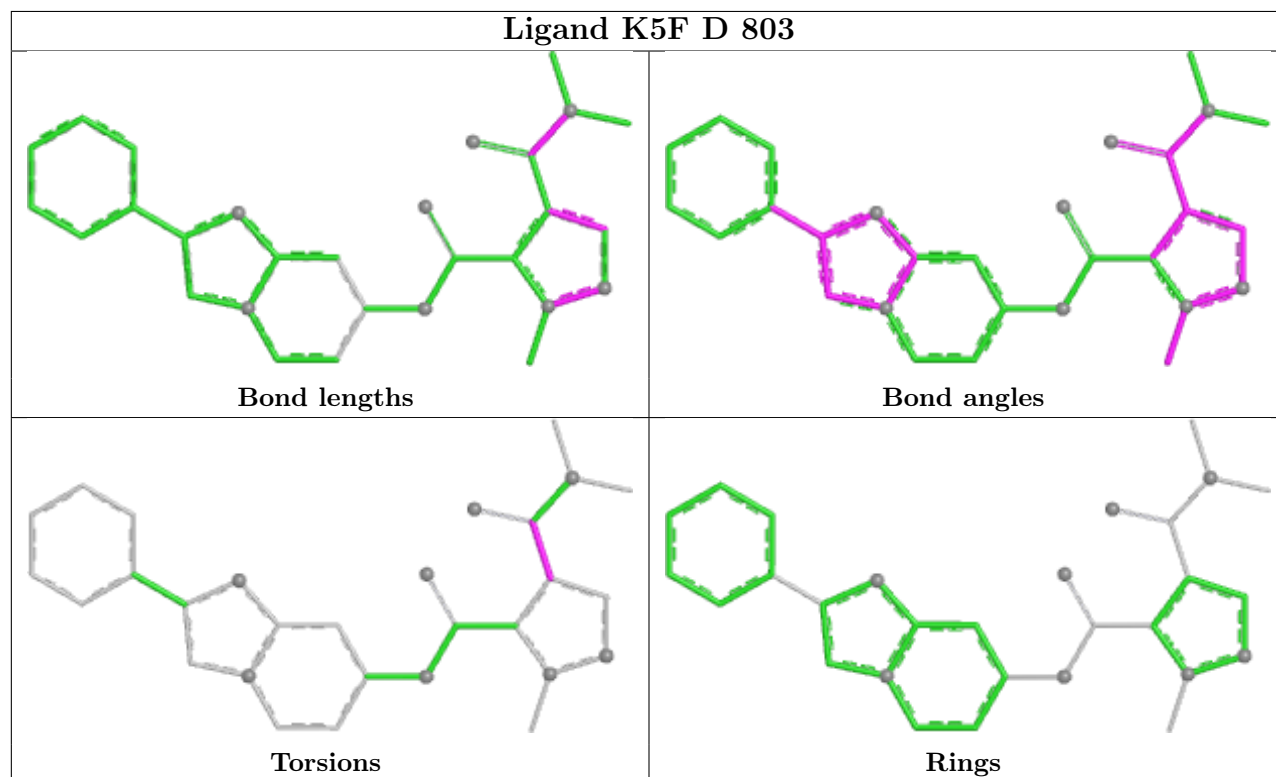
There are no ring outliers.

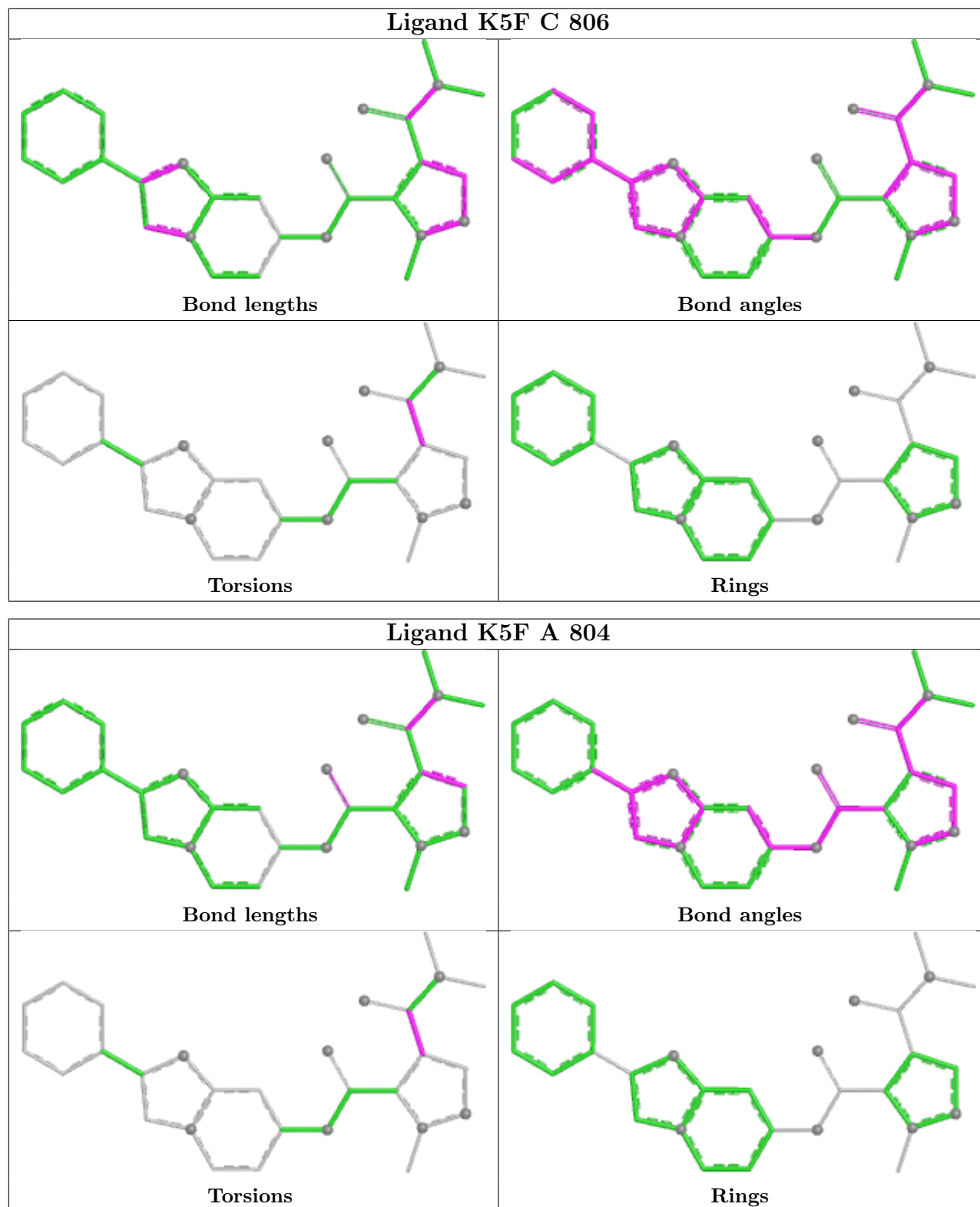
4 monomers are involved in 8 short contacts:

Mol	Chain	Res	Type	Clashes	Symm-Clashes
5	D	803	K5F	2	0
5	B	809	K5F	2	0
5	C	806	K5F	3	0
5	A	804	K5F	1	0

The following is a two-dimensional graphical depiction of Mogul quality analysis of bond lengths, bond angles, torsion angles, and ring geometry for all instances of the Ligand of Interest. In addition, ligands with molecular weight > 250 and outliers as shown on the validation Tables will also be included. For torsion angles, if less than 5% of the Mogul distribution of torsion angles is within 10 degrees of the torsion angle in question, then that torsion angle is considered an outlier. Any bond that is central to one or more torsion angles identified as an outlier by Mogul will be highlighted in the graph. For rings, the root-mean-square deviation (RMSD) between the ring

in question and similar rings identified by Mogul is calculated over all ring torsion angles. If the average RMSD is greater than 60 degrees and the minimal RMSD between the ring in question and any Mogul-identified rings is also greater than 60 degrees, then that ring is considered an outlier. The outliers are highlighted in purple. The color gray indicates Mogul did not find sufficient equivalents in the CSD to analyse the geometry.





5.7 Other polymers [i](#)

There are no such residues in this entry.

5.8 Polymer linkage issues ⓘ

There are no chain breaks in this entry.

6 Fit of model and data [i](#)

6.1 Protein, DNA and RNA chains [i](#)

In the following table, the column labelled ‘#RSRZ> 2’ contains the number (and percentage) of RSRZ outliers, followed by percent RSRZ outliers for the chain as percentile scores relative to all X-ray entries and entries of similar resolution. The OWAB column contains the minimum, median, 95th percentile and maximum values of the occupancy-weighted average B-factor per residue. The column labelled ‘Q< 0.9’ lists the number of (and percentage) of residues with an average occupancy less than 0.9.

Mol	Chain	Analysed	<RSRZ>	#RSRZ>2	OWAB(Å ²)	Q<0.9
1	A	312/343 (90%)	-1.38	0 100 100	21, 34, 54, 68	1 (0%)
1	B	314/343 (91%)	-1.35	0 100 100	20, 33, 52, 76	1 (0%)
1	C	312/343 (90%)	-1.39	0 100 100	19, 34, 47, 69	2 (0%)
1	D	312/343 (90%)	-1.32	0 100 100	23, 38, 55, 76	2 (0%)
All	All	1250/1372 (91%)	-1.36	0 100 100	19, 35, 53, 76	6 (0%)

There are no RSRZ outliers to report.

6.2 Non-standard residues in protein, DNA, RNA chains [i](#)

In the following table, the Atoms column lists the number of modelled atoms in the group and the number defined in the chemical component dictionary. The B-factors column lists the minimum, median, 95th percentile and maximum values of B factors of atoms in the group. The column labelled ‘Q< 0.9’ lists the number of atoms with occupancy less than 0.9.

Mol	Type	Chain	Res	Atoms	RSCC	RSR	B-factors(Å ²)	Q<0.9
1	CME	B	509	10/11	0.98	0.06	34,38,55,61	0
1	CME	D	509	10/11	0.98	0.05	43,44,66,68	0
1	CME	C	509	10/11	0.99	0.04	34,39,53,54	0
1	CME	A	509	10/11	0.99	0.04	39,46,57,58	0

6.3 Carbohydrates [i](#)

There are no oligosaccharides in this entry.

6.4 Ligands ⓘ

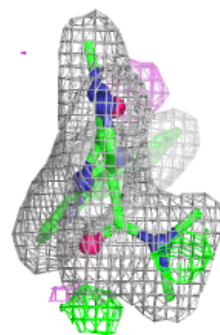
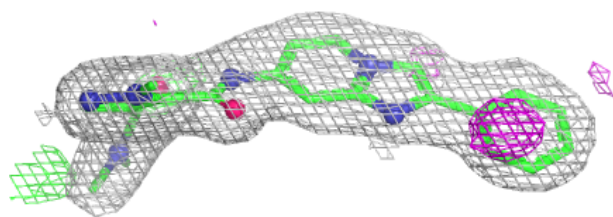
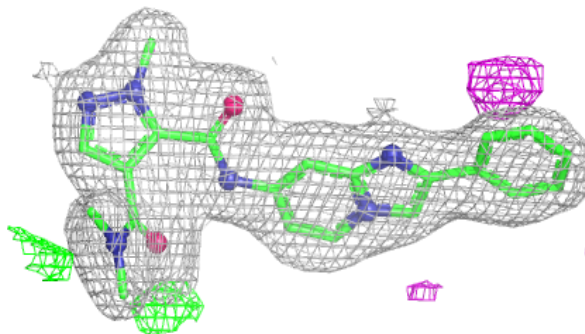
In the following table, the Atoms column lists the number of modelled atoms in the group and the number defined in the chemical component dictionary. The B-factors column lists the minimum, median, 95th percentile and maximum values of B factors of atoms in the group. The column labelled 'Q< 0.9' lists the number of atoms with occupancy less than 0.9.

Mol	Type	Chain	Res	Atoms	RSCC	RSR	B-factors(Å ²)	Q<0.9
7	GOL	B	808	6/6	0.98	0.06	49,53,57,58	0
5	K5F	B	809	29/29	0.99	0.03	25,28,33,33	0
5	K5F	C	806	29/29	0.99	0.03	27,30,36,37	0
5	K5F	D	803	29/29	0.99	0.03	27,32,36,37	0
6	PR	B	806	1/1	0.99	0.06	74,74,74,74	0
6	PR	C	804	1/1	0.99	0.03	103,103,103,103	1
6	PR	C	805	1/1	0.99	0.03	115,115,115,115	1
4	CL	A	803	1/1	0.99	0.04	50,50,50,50	0
2	ZN	A	801	1/1	1.00	0.01	30,30,30,30	0
5	K5F	A	804	29/29	1.00	0.02	24,30,38,40	0
2	ZN	B	801	1/1	1.00	0.01	26,26,26,26	0
2	ZN	C	801	1/1	1.00	0.01	30,30,30,30	0
2	ZN	D	801	1/1	1.00	0.01	35,35,35,35	0
6	PR	B	803	1/1	1.00	0.06	56,56,56,56	0
6	PR	B	804	1/1	1.00	0.07	62,62,62,62	0
6	PR	B	805	1/1	1.00	0.06	71,71,71,71	0
3	MG	A	802	1/1	1.00	0.01	20,20,20,20	0
6	PR	B	807	1/1	1.00	0.10	76,76,76,76	0
6	PR	C	803	1/1	1.00	0.01	104,104,104,104	1
3	MG	B	802	1/1	1.00	0.02	20,20,20,20	0
3	MG	C	802	1/1	1.00	0.01	22,22,22,22	0
3	MG	D	802	1/1	1.00	0.01	31,31,31,31	0

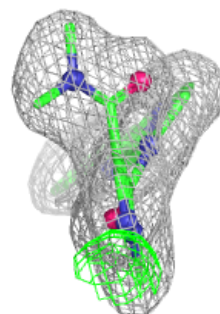
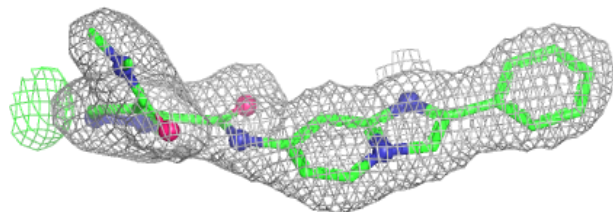
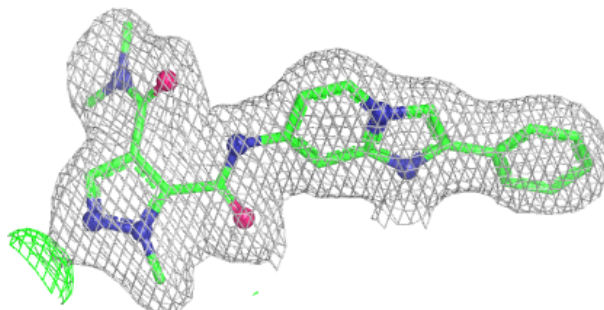
The following is a graphical depiction of the model fit to experimental electron density of all instances of the Ligand of Interest. In addition, ligands with molecular weight > 250 and outliers as shown on the geometry validation Tables will also be included. Each fit is shown from different orientation to approximate a three-dimensional view.

Electron density around K5F B 809:

$2mF_o-DF_c$ (at 0.7 rmsd) in gray
 mF_o-DF_c (at 3 rmsd) in purple (negative)
and green (positive)

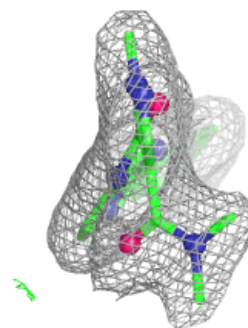
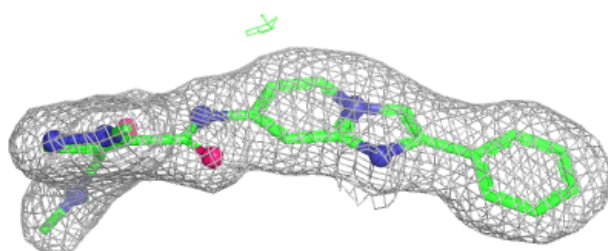
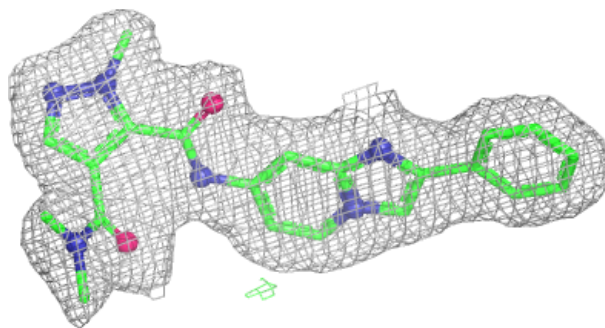
**Electron density around K5F C 806:**

$2mF_o-DF_c$ (at 0.7 rmsd) in gray
 mF_o-DF_c (at 3 rmsd) in purple (negative)
and green (positive)

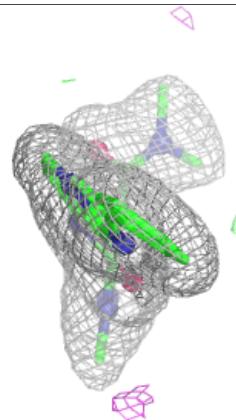
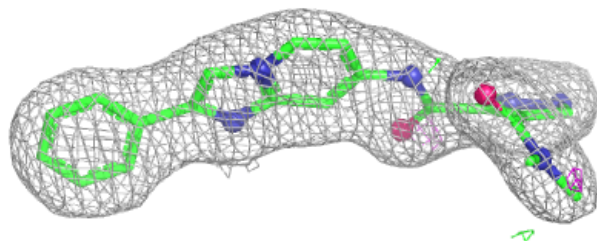
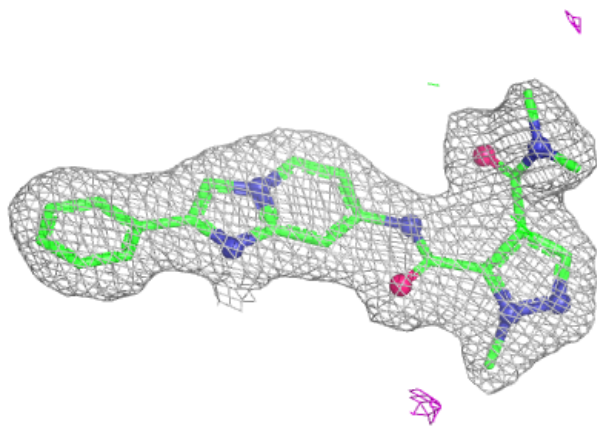


Electron density around K5F D 803:

$2mF_o-DF_c$ (at 0.7 rmsd) in gray
 mF_o-DF_c (at 3 rmsd) in purple (negative)
and green (positive)

**Electron density around K5F A 804:**

$2mF_o-DF_c$ (at 0.7 rmsd) in gray
 mF_o-DF_c (at 3 rmsd) in purple (negative)
and green (positive)



6.5 Other polymers [i](#)

There are no such residues in this entry.