



Full wwPDB X-ray Structure Validation Report ⓘ

Mar 6, 2026 – 04:50 PM UTC

PDB ID : 5VER / pdb_00005ver
Title : MOUSE KYNURENINE AMINOTRANSFERASE III, RE-REFINEMENT OF THE PDB STRUCTURE 3E2Z
Authors : Wlodawer, A.; Dauter, Z.; Minor, W.; Stanfield, R.; Porebski, P.; Jaskolski, M.; Pozharski, E.; Weichenberger, C.X.; Rupp, B.
Deposited on : 2017-04-05
Resolution : 2.81 Å(reported)

This is a Full wwPDB X-ray Structure Validation Report for a publicly released PDB entry.

We welcome your comments at validation@mail.wwpdb.org

A user guide is available at

<https://www.wwpdb.org/validation/2017/XrayValidationReportHelp>

with specific help available everywhere you see the ⓘ symbol.

The types of validation reports are described at

<http://www.wwpdb.org/validation/2017/FAQs#types>.

The following versions of software and data (see [references ⓘ](#)) were used in the production of this report:

MolProbity	:	4-5-2 with Phenix2.0
Mogul	:	2022.3.0, CSD as543be (2022)
Xtriage (Phenix)	:	2.0
EDS	:	3.0
Percentile statistics	:	20250101.v01 (using entries in the PDB archive January 1st 2025)
CCP4	:	9.0.010 (Gargrove)
Density-Fitness	:	1.0.12
Ideal geometry (proteins)	:	Engh & Huber (2001)
Ideal geometry (DNA, RNA)	:	Parkinson et al. (1996)
Validation Pipeline (wwPDB-VP)	:	2.49

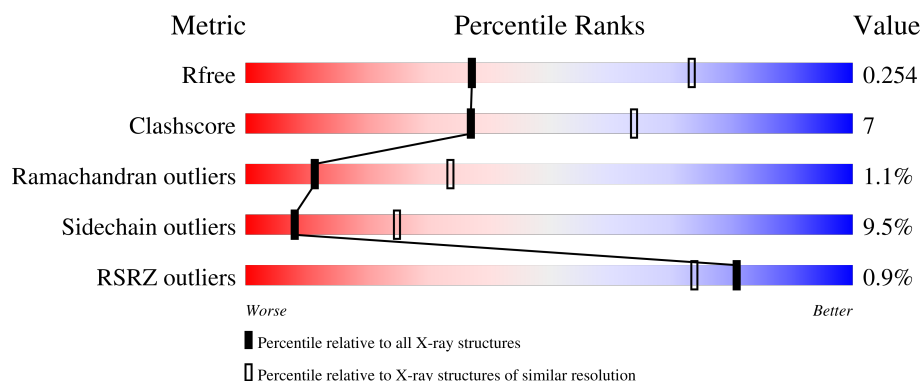
1 Overall quality at a glance

The following experimental techniques were used to determine the structure:

X-RAY DIFFRACTION



The reported resolution of this entry is 2.81 Å.

Percentile scores (ranging between 0-100) for global validation metrics of the entry are shown in the following graphic. The table shows the number of entries on which the scores are based.



Metric	Whole archive (#Entries)	Similar resolution (#Entries, resolution range(Å))
R_{free}	180053	4591 (2.84-2.80)
Clashscore	190562	5010 (2.84-2.80)
Ramachandran outliers	187476	4916 (2.84-2.80)
Sidechain outliers	187428	4918 (2.84-2.80)
RSRZ outliers	180081	4594 (2.84-2.80)

The table below summarises the geometric issues observed across the polymeric chains and their fit to the electron density. The red, orange, yellow and green segments of the lower bar indicate the fraction of residues that contain outliers for ≥ 3 , 2, 1 and 0 types of geometric quality criteria respectively. A grey segment represents the fraction of residues that are not modelled. The numeric value for each fraction is indicated below the corresponding segment, with a dot representing fractions $\leq 5\%$. The upper red bar (where present) indicates the fraction of residues that have poor fit to the electron density. The numeric value is given above the bar.

Mol	Chain	Length	Quality of chain
1	A	410	 76% 20% •
1	B	410	 78% 18% •

2 Entry composition [i](#)

There are 9 unique types of molecules in this entry. The entry contains 6727 atoms, of which 0 are hydrogens and 0 are deuteriums.

In the tables below, the ZeroOcc column contains the number of atoms modelled with zero occupancy, the AltConf column contains the number of residues with at least one atom in alternate conformation and the Trace column contains the number of residues modelled with at most 2 atoms.

- Molecule 1 is a protein called Kynurenine--oxoglutarate transaminase 3.

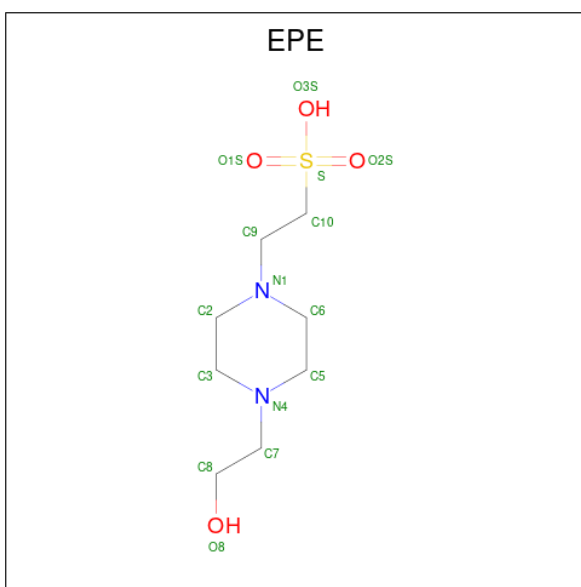
Mol	Chain	Residues	Atoms					ZeroOcc	AltConf	Trace
1	A	410	Total	C	N	O	S	0	1	0
			3260	2107	536	599	18			
1	B	410	Total	C	N	O	S	0	1	0
			3260	2107	536	599	18			

- Molecule 2 is PYRIDOXAL-5'-PHOSPHATE (CCD ID: PLP) (formula: $C_8H_{10}NO_6P$).



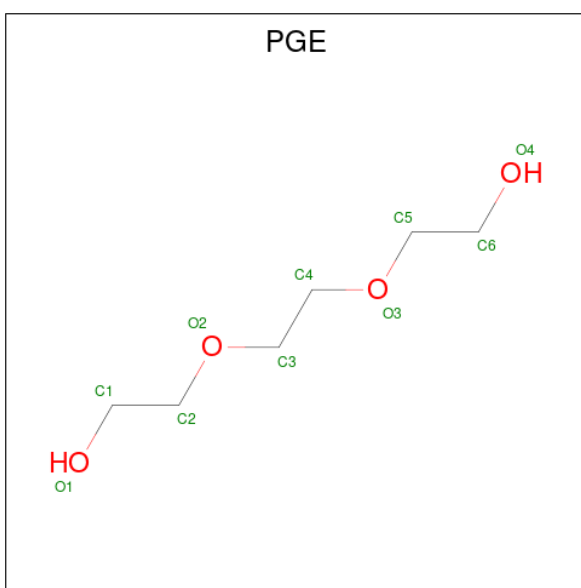
Mol	Chain	Residues	Atoms					ZeroOcc	AltConf
2	A	1	Total	C	N	O	P	0	0
			15	8	1	5	1		

- Molecule 3 is 4-(2-HYDROXYETHYL)-1-PIPERAZINE ETHANESULFONIC ACID (CCD ID: EPE) (formula: $C_8H_{18}N_2O_4S$).



Mol	Chain	Residues	Atoms					ZeroOcc	AltConf
3	A	1	Total	C	N	O	S	0	0
			15	8	2	4	1		
3	B	1	Total	C	N	O	S	0	0
			15	8	2	4	1		

- Molecule 4 is TRIETHYLENE GLYCOL (CCD ID: PGE) (formula: $C_6H_{14}O_4$).



Mol	Chain	Residues	Atoms			ZeroOcc	AltConf
4	A	1	Total	C	O	0	0
			10	6	4		

- Molecule 5 is GLYCEROL (CCD ID: GOL) (formula: $C_3H_8O_3$).

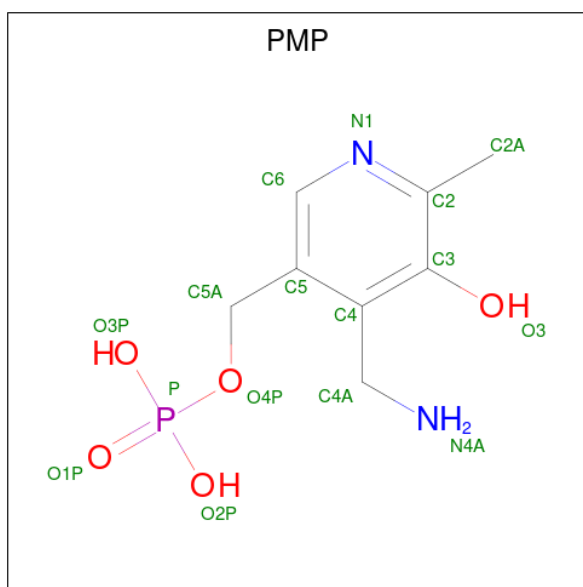


Mol	Chain	Residues	Atoms			ZeroOcc	AltConf
5	A	1	Total	C	O	0	0
			6	3	3		
5	A	1	Total	C	O	0	0
			6	3	3		
5	B	1	Total	C	O	0	0
			6	3	3		
5	B	1	Total	C	O	0	0
			6	3	3		

- Molecule 6 is CALCIUM ION (CCD ID: CA) (formula: Ca).

Mol	Chain	Residues	Atoms		ZeroOcc	AltConf
6	A	3	Total	Ca	0	0
			3	3		
6	B	1	Total	Ca	0	0
			1	1		

- Molecule 7 is 4'-DEOXY-4'-AMINOPYRIDOXAL-5'-PHOSPHATE (CCD ID: PMP) (formula: C₈H₁₃N₂O₅P).



Mol	Chain	Residues	Atoms					ZeroOcc	AltConf
7	B	1	Total	C	N	O	P	0	0
			16	8	2	5	1		

- Molecule 8 is DI(HYDROXYETHYL)ETHER (CCD ID: PEG) (formula: $C_4H_{10}O_3$).



Mol	Chain	Residues	Atoms			ZeroOcc	AltConf
8	B	1	Total	C	O	0	0
			7	4	3		

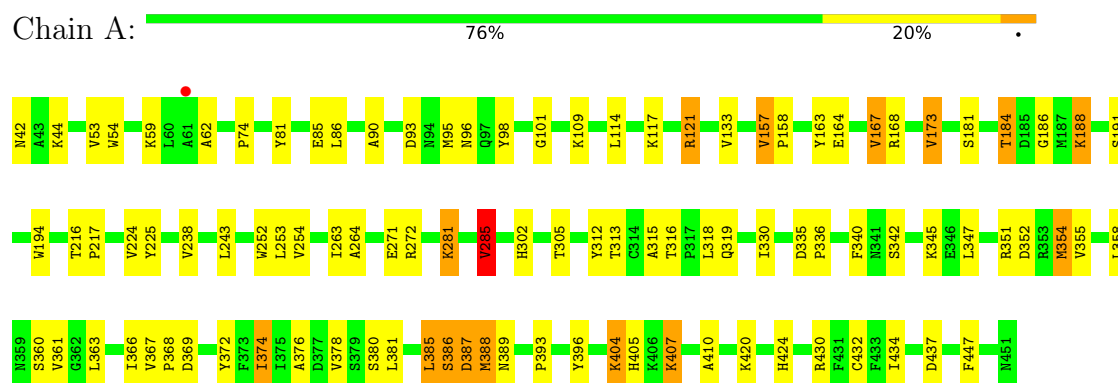
- Molecule 9 is water.

Mol	Chain	Residues	Atoms		ZeroOcc	AltConf
9	A	55	Total 55	O 55	0	0
9	B	46	Total 46	O 46	0	0

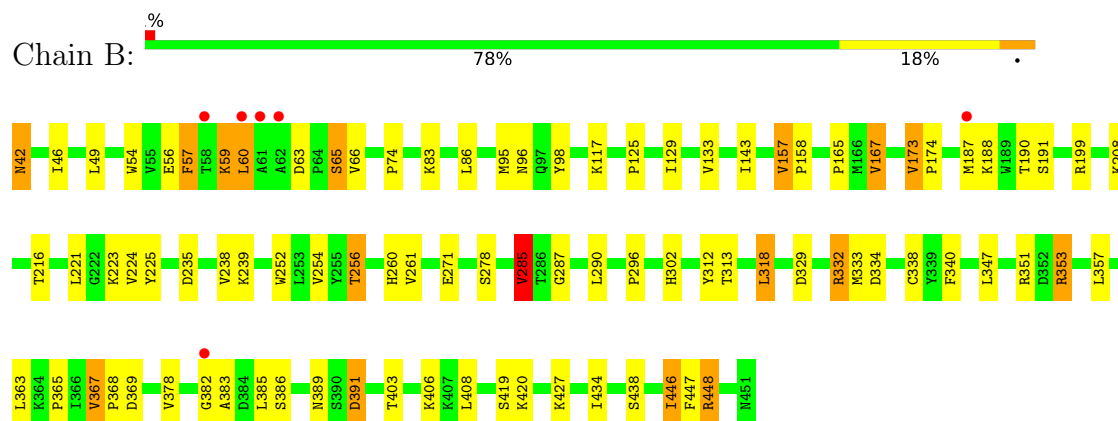
3 Residue-property plots [i](#)

These plots are drawn for all protein, RNA, DNA and oligosaccharide chains in the entry. The first graphic for a chain summarises the proportions of the various outlier classes displayed in the second graphic. The second graphic shows the sequence view annotated by issues in geometry and electron density. Residues are color-coded according to the number of geometric quality criteria for which they contain at least one outlier: green = 0, yellow = 1, orange = 2 and red = 3 or more. A red dot above a residue indicates a poor fit to the electron density ($RSRZ > 2$). Stretches of 2 or more consecutive residues without any outlier are shown as a green connector. Residues present in the sample, but not in the model, are shown in grey.

- Molecule 1: Kynurenine--oxoglutarate transaminase 3



- Molecule 1: Kynurenine--oxoglutarate transaminase 3



4 Data and refinement statistics

Property	Value	Source
Space group	P 43 21 2	Depositor
Cell constants a, b, c, α , β , γ	91.49Å 91.49Å 233.50Å 90.00° 90.00° 90.00°	Depositor
Resolution (Å)	29.64 – 2.81 29.64 – 2.81	Depositor EDS
% Data completeness (in resolution range)	95.5 (29.64-2.81) 95.6 (29.64-2.81)	Depositor EDS
R_{merge}	(Not available)	Depositor
R_{sym}	(Not available)	Depositor
$\langle I/\sigma(I) \rangle$ ¹	2.03 (at 2.80Å)	Xtriage
Refinement program	REFMAC	Depositor
R, R_{free}	0.162 , 0.252 0.165 , 0.254	Depositor DCC
R_{free} test set	1227 reflections (5.11%)	wwPDB-VP
Wilson B-factor (Å ²)	34.4	Xtriage
Anisotropy	0.184	Xtriage
Bulk solvent k_{sol} (e/Å ³), B_{sol} (Å ²)	0.37 , 36.8	EDS
L-test for twinning ²	$\langle L \rangle = 0.50$, $\langle L^2 \rangle = 0.33$	Xtriage
Estimated twinning fraction	No twinning to report.	Xtriage
F_o, F_c correlation	0.95	EDS
Total number of atoms	6727	wwPDB-VP
Average B, all atoms (Å ²)	30.0	wwPDB-VP

Xtriage's analysis on translational NCS is as follows: *The largest off-origin peak in the Patterson function is 3.84% of the height of the origin peak. No significant pseudotranslation is detected.*

¹Intensities estimated from amplitudes.

²Theoretical values of $\langle |L| \rangle$, $\langle L^2 \rangle$ for acentric reflections are 0.5, 0.333 respectively for untwinned datasets, and 0.375, 0.2 for perfectly twinned datasets.

5 Model quality

5.1 Standard geometry

Bond lengths and bond angles in the following residue types are not validated in this section: GOL, PEG, PLP, CA, EPE, PMP, PGE

The Z score for a bond length (or angle) is the number of standard deviations the observed value is removed from the expected value. A bond length (or angle) with $|Z| > 5$ is considered an outlier worth inspection. RMSZ is the root-mean-square of all Z scores of the bond lengths (or angles).

Mol	Chain	Bond lengths		Bond angles	
		RMSZ	# Z >5	RMSZ	# Z >5
1	A	0.87	0/3353	1.20	8/4555 (0.2%)
1	B	0.87	0/3353	1.17	7/4555 (0.2%)
All	All	0.87	0/6706	1.18	15/9110 (0.2%)

Chiral center outliers are detected by calculating the chiral volume of a chiral center and verifying if the center is modelled as a planar moiety or with the opposite hand. A planarity outlier is detected by checking planarity of atoms in a peptide group, atoms in a mainchain group or atoms of a sidechain that are expected to be planar.

Mol	Chain	#Chirality outliers	#Planarity outliers
1	A	0	1
1	B	0	2
All	All	0	3

There are no bond length outliers.

All (15) bond angle outliers are listed below:

Mol	Chain	Res	Type	Atoms	Z	Observed(°)	Ideal(°)
1	B	385	LEU	N-CA-C	7.16	119.97	111.02
1	A	388	MET	N-CA-C	-6.66	98.37	108.96
1	A	285	VAL	CB-CA-C	6.51	121.97	111.29
1	A	281	LYS	CB-CA-C	6.25	122.15	110.70
1	A	173	VAL	CB-CA-C	6.21	117.92	110.78
1	B	167	VAL	N-CA-CB	6.12	118.86	110.54
1	B	386	SER	N-CA-C	-6.01	105.26	114.16
1	A	354	MET	N-CA-C	5.77	117.24	111.07
1	A	184	THR	N-CA-CB	-5.47	102.54	110.36
1	B	56	GLU	N-CA-C	5.37	117.88	111.71
1	B	285	VAL	CB-CA-C	5.19	119.80	111.29
1	B	347	LEU	N-CA-C	5.16	116.99	111.36

Continued on next page...

Continued from previous page...

Mol	Chain	Res	Type	Atoms	Z	Observed(°)	Ideal(°)
1	A	101	GLY	N-CA-C	5.10	119.05	112.83
1	A	281	LYS	CB-CG-CD	5.08	123.00	111.30
1	B	187	MET	N-CA-C	5.04	116.47	110.97

There are no chirality outliers.

All (3) planarity outliers are listed below:

Mol	Chain	Res	Type	Group
1	A	387	ASP	Peptide
1	B	391	ASP	Peptide
1	B	57	PHE	Peptide

5.2 Too-close contacts

In the following table, the Non-H and H(model) columns list the number of non-hydrogen atoms and hydrogen atoms in the chain respectively. The H(added) column lists the number of hydrogen atoms added and optimized by MolProbity. The Clashes column lists the number of clashes within the asymmetric unit, whereas Symm-Clashes lists symmetry-related clashes.

Mol	Chain	Non-H	H(model)	H(added)	Clashes	Symm-Clashes
1	A	3260	0	3236	54	0
1	B	3260	0	3236	52	0
2	A	15	0	6	0	0
3	A	15	0	18	3	0
3	B	15	0	18	2	0
4	A	10	0	14	1	0
5	A	12	0	16	0	0
5	B	12	0	16	2	0
6	A	3	0	0	0	0
6	B	1	0	0	0	0
7	B	16	0	10	0	0
8	B	7	0	10	0	0
9	A	55	0	0	0	0
9	B	46	0	0	0	0
All	All	6727	0	6580	94	0

The all-atom clashscore is defined as the number of clashes found per 1000 atoms (including hydrogen atoms). The all-atom clashscore for this structure is 7.

All (94) close contacts within the same asymmetric unit are listed below, sorted by their clash magnitude.

Atom-1	Atom-2	Interatomic distance (Å)	Clash overlap (Å)
1:A:184:THR:HG22	1:A:186:GLY:H	1.29	0.95
1:A:121:ARG:HH11	1:A:121:ARG:HG2	1.42	0.84
1:A:352:ASP:O	1:A:355:VAL:HG12	1.83	0.79
1:A:351:ARG:HD2	1:A:368:PRO:HD2	1.67	0.75
1:B:117:LYS:HD3	1:B:333:MET:HE1	1.71	0.73
1:A:404:LYS:HD2	1:A:405:HIS:CD2	2.25	0.72
1:B:448:ARG:HH11	1:B:448:ARG:HG3	1.58	0.67
1:A:133:VAL:HG21	1:B:133:VAL:HG21	1.77	0.66
1:A:157:VAL:HG23	1:A:158:PRO:HA	1.78	0.66
1:B:448:ARG:HH11	1:B:448:ARG:CG	2.09	0.65
1:A:302:HIS:CE1	1:B:42:ASN:HB2	2.31	0.64
1:A:184:THR:HG23	1:A:188:LYS:O	2.01	0.60
1:B:190:THR:HG22	1:B:367:VAL:HG13	1.84	0.58
1:A:90:ALA:O	1:B:83:LYS:HG2	2.03	0.57
1:A:404:LYS:HD2	1:A:405:HIS:HD2	1.68	0.57
1:B:235:ASP:OD1	5:B:504:GOL:H31	2.05	0.57
1:B:125:PRO:HA	1:B:129:ILE:HD12	1.86	0.56
1:A:361:VAL:HG12	1:A:361:VAL:O	2.05	0.56
1:A:216:THR:HB	1:A:225:TYR:CD1	2.41	0.55
1:B:332:ARG:O	1:B:338:CYS:HB2	2.06	0.55
1:A:252:TRP:CE3	1:A:340:PHE:HB3	2.42	0.54
1:B:191:SER:HB3	1:B:223:LYS:HA	1.90	0.53
1:A:191:SER:OG	1:A:368:PRO:HA	2.08	0.53
1:A:363:LEU:HD22	1:A:378:VAL:HG12	1.90	0.52
1:A:74:PRO:HB3	1:A:434:ILE:HG12	1.92	0.51
3:A:702:EPE:H61	1:B:98:TYR:CE2	2.45	0.51
1:B:157:VAL:HA	1:B:158:PRO:C	2.34	0.51
1:A:385:LEU:O	1:A:386:SER:HB2	2.10	0.51
1:B:60:LEU:HB3	1:B:403:THR:HG21	1.94	0.50
1:A:424:HIS:HB3	4:A:703:PGE:H22	1.94	0.50
1:A:368:PRO:HD3	1:A:374:ILE:HD12	1.94	0.49
1:A:285:VAL:CG2	1:B:96:ASN:HB3	2.43	0.49
1:B:95:MET:HA	1:B:95:MET:HE2	1.95	0.49
1:B:290:LEU:HD11	1:B:318:LEU:HB3	1.94	0.49
1:A:285:VAL:HG23	1:B:96:ASN:HB3	1.94	0.49
1:B:224:VAL:HG23	1:B:369:ASP:HB2	1.94	0.49
1:A:42:ASN:HB3	1:B:302:HIS:CD2	2.47	0.49
1:A:54:TRP:CZ2	3:A:702:EPE:H102	2.48	0.49
1:B:363:LEU:O	1:B:365:PRO:HD3	2.12	0.49
1:A:121:ARG:HH11	1:A:121:ARG:CG	2.22	0.49
1:B:63:ASP:OD1	1:B:65:SER:HB3	2.14	0.48
1:B:271:GLU:HA	1:B:296:PRO:HG3	1.96	0.48

Continued on next page...

Continued from previous page...

Atom-1	Atom-2	Interatomic distance (Å)	Clash overlap (Å)
1:A:315:ALA:HA	1:B:287:GLY:O	2.14	0.47
1:B:334:ASP:OD1	1:B:334:ASP:N	2.44	0.47
1:B:448:ARG:HH11	1:B:448:ARG:HB2	1.77	0.47
1:A:194:TRP:HE1	1:A:366:ILE:HD13	1.80	0.47
1:B:448:ARG:HH11	1:B:448:ARG:CB	2.28	0.47
1:A:315:ALA:O	1:A:319:GLN:HG3	2.15	0.47
1:B:173:VAL:HA	1:B:174:PRO:HD2	1.81	0.47
1:B:285:VAL:HG13	1:B:285:VAL:O	2.15	0.47
1:B:406:LYS:O	1:B:446:ILE:HG21	2.14	0.47
1:A:95:MET:O	1:A:316:THR:HB	2.16	0.46
1:B:60:LEU:CD2	1:B:63:ASP:HB2	2.46	0.46
1:B:448:ARG:HG3	1:B:448:ARG:NH1	2.24	0.46
1:A:42:ASN:HB3	1:B:302:HIS:NE2	2.30	0.46
1:A:114:LEU:HB2	1:A:330:ILE:HD11	1.97	0.46
1:B:238:VAL:HG21	5:B:504:GOL:H11	1.97	0.46
1:A:163:TYR:O	1:A:167:VAL:HG13	2.16	0.46
1:A:302:HIS:ND1	1:B:42:ASN:HB2	2.30	0.46
1:B:329:ASP:OD1	1:B:332:ARG:NH1	2.48	0.46
1:A:358:LEU:HD13	1:A:376:ALA:HB2	1.98	0.45
1:A:98:TYR:CD2	3:B:502:EPE:H61	2.52	0.45
1:B:216:THR:HB	1:B:225:TYR:CD1	2.52	0.45
1:A:157:VAL:HA	1:A:158:PRO:C	2.42	0.45
1:A:253:LEU:HD22	1:A:347:LEU:HD12	1.99	0.45
1:B:351:ARG:HD2	1:B:368:PRO:HD2	1.99	0.44
1:A:361:VAL:HG21	1:A:447:PHE:HD1	1.82	0.44
1:A:96:ASN:HB3	1:B:285:VAL:HG22	2.00	0.43
1:B:285:VAL:O	1:B:285:VAL:CG1	2.67	0.43
1:A:184:THR:HG22	1:A:186:GLY:N	2.12	0.43
1:A:121:ARG:HG2	1:A:121:ARG:NH1	2.20	0.43
1:A:318:LEU:HD11	1:B:318:LEU:HD22	2.01	0.43
1:A:393:PRO:HD2	1:A:396:TYR:CD1	2.54	0.43
1:A:432:CYS:SG	1:A:434:ILE:HG22	2.57	0.43
1:B:54:TRP:CZ2	3:B:502:EPE:H102	2.54	0.43
3:A:702:EPE:H61	1:B:98:TYR:CD2	2.54	0.42
1:B:57:PHE:C	1:B:59:LYS:H	2.28	0.42
1:B:353:ARG:O	1:B:357:LEU:HG	2.19	0.42
1:B:357:LEU:HB3	1:B:447:PHE:CD2	2.54	0.42
1:B:49:LEU:HD22	1:B:165:PRO:HB3	2.02	0.42
1:A:404:LYS:O	1:A:407:LYS:NZ	2.53	0.41
1:B:332:ARG:HH11	1:B:338:CYS:HA	1.84	0.41
1:A:164:GLU:OE2	1:A:168:ARG:NH1	2.51	0.41

Continued on next page...

Continued from previous page...

Atom-1	Atom-2	Interatomic distance (Å)	Clash overlap (Å)
1:A:216:THR:HA	1:A:217:PRO:C	2.45	0.41
1:A:224:VAL:HG23	1:A:369:ASP:HB2	2.02	0.41
1:B:74:PRO:HB3	1:B:434:ILE:HG12	2.02	0.41
1:A:380:SER:O	1:A:381:LEU:HD12	2.21	0.41
1:B:252:TRP:CE3	1:B:340:PHE:HB3	2.56	0.41
1:A:305:THR:HB	1:B:46:ILE:HD12	2.03	0.41
1:A:410:ALA:HB1	1:A:430:ARG:O	2.21	0.41
1:A:263:ILE:HG23	1:A:264:ALA:N	2.36	0.40
1:A:335:ASP:HA	1:A:336:PRO:HD2	1.96	0.40
1:A:81:TYR:O	1:A:85:GLU:HG2	2.21	0.40
1:B:254:VAL:HG21	1:B:260:HIS:HB2	2.04	0.40

There are no symmetry-related clashes.

5.3 Torsion angles [i](#)

5.3.1 Protein backbone [i](#)

In the following table, the Percentiles column shows the percent Ramachandran outliers of the chain as a percentile score with respect to all X-ray entries followed by that with respect to entries of similar resolution.

The Analysed column shows the number of residues for which the backbone conformation was analysed, and the total number of residues.

Mol	Chain	Analysed	Favoured	Allowed	Outliers	Percentiles	
1	A	409/410 (100%)	380 (93%)	25 (6%)	4 (1%)	12	36
1	B	409/410 (100%)	380 (93%)	24 (6%)	5 (1%)	10	31
All	All	818/820 (100%)	760 (93%)	49 (6%)	9 (1%)	11	34

All (9) Ramachandran outliers are listed below:

Mol	Chain	Res	Type
1	A	386	SER
1	A	93	ASP
1	B	312	TYR
1	A	312	TYR
1	B	383	ALA
1	A	62	ALA
1	B	59	LYS

Continued on next page...

Continued from previous page...

Mol	Chain	Res	Type
1	B	256	THR
1	B	382	GLY

5.3.2 Protein sidechains ⓘ

In the following table, the Percentiles column shows the percent sidechain outliers of the chain as a percentile score with respect to all X-ray entries followed by that with respect to entries of similar resolution.

The Analysed column shows the number of residues for which the sidechain conformation was analysed, and the total number of residues.

Mol	Chain	Analysed	Rotameric	Outliers	Percentiles	
1	A	359/358 (100%)	324 (90%)	35 (10%)	8	24
1	B	359/358 (100%)	326 (91%)	33 (9%)	8	26
All	All	718/716 (100%)	650 (90%)	68 (10%)	8	25

All (68) residues with a non-rotameric sidechain are listed below:

Mol	Chain	Res	Type
1	A	44	LYS
1	A	53	VAL
1	A	59	LYS
1	A	86	LEU
1	A	109	LYS
1	A	117	LYS
1	A	121	ARG
1	A	157	VAL
1	A	167	VAL
1	A	173	VAL
1	A	181	SER
1	A	188	LYS
1	A	238	VAL
1	A	243	LEU
1	A	254	VAL
1	A	271	GLU
1	A	272	ARG
1	A	281	LYS
1	A	285	VAL
1	A	313	THR
1	A	342	SER

Continued on next page...

Continued from previous page...

Mol	Chain	Res	Type
1	A	345	LYS
1	A	354	MET
1	A	360	SER
1	A	367	VAL
1	A	372	TYR
1	A	374	ILE
1	A	385	LEU
1	A	387	ASP
1	A	388	MET
1	A	389	ASN
1	A	404	LYS
1	A	407	LYS
1	A	420	LYS
1	A	437	ASP
1	B	42	ASN
1	B	60	LEU
1	B	65	SER
1	B	66	VAL
1	B	86	LEU
1	B	143	ILE
1	B	157	VAL
1	B	167	VAL
1	B	173	VAL
1	B	188	LYS
1	B	199	ARG
1	B	208	LYS
1	B	221	LEU
1	B	239	LYS
1	B	256	THR
1	B	261	VAL
1	B	278	SER
1	B	285	VAL
1	B	313	THR
1	B	318	LEU
1	B	332	ARG
1	B	353	ARG
1	B	367	VAL
1	B	378	VAL
1	B	389	ASN
1	B	391	ASP
1	B	408	LEU
1	B	419	SER

Continued on next page...

Continued from previous page...

Mol	Chain	Res	Type
1	B	420	LYS
1	B	427	LYS
1	B	438	SER
1	B	446	ILE
1	B	448	ARG

Sometimes sidechains can be flipped to improve hydrogen bonding and reduce clashes. All (13) such sidechains are listed below:

Mol	Chain	Res	Type
1	A	42	ASN
1	A	126	ASN
1	A	144	GLN
1	A	308	GLN
1	A	405	HIS
1	B	120	GLN
1	B	126	ASN
1	B	144	GLN
1	B	231	GLN
1	B	240	HIS
1	B	258	HIS
1	B	341	ASN
1	B	424	HIS

5.3.3 RNA [i](#)

There are no RNA molecules in this entry.

5.4 Non-standard residues in protein, DNA, RNA chains [i](#)

There are no non-standard protein/DNA/RNA residues in this entry.

5.5 Carbohydrates [i](#)

There are no oligosaccharides in this entry.

5.6 Ligand geometry [i](#)

Of 14 ligands modelled in this entry, 4 are monoatomic - leaving 10 for Mogul analysis.

In the following table, the Counts columns list the number of bonds (or angles) for which Mogul statistics could be retrieved, the number of bonds (or angles) that are observed in the model and the number of bonds (or angles) that are defined in the Chemical Component Dictionary. The Link column lists molecule types, if any, to which the group is linked. The Z score for a bond length (or angle) is the number of standard deviations the observed value is removed from the expected value. A bond length (or angle) with $|Z| > 2$ is considered an outlier worth inspection. RMSZ is the root-mean-square of all Z scores of the bond lengths (or angles).

Mol	Type	Chain	Res	Link	Bond lengths			Bond angles		
					Counts	RMSZ	# $ Z > 2$	Counts	RMSZ	# $ Z > 2$
5	GOL	A	704	-	5,5,5	0.44	0	5,5,5	0.63	0
5	GOL	A	705	-	5,5,5	0.57	0	5,5,5	0.74	0
3	EPE	A	702	-	15,15,15	2.21	2 (13%)	19,20,20	2.06	5 (26%)
7	PMP	B	501	-	16,16,16	3.33	3 (18%)	22,23,23	1.55	5 (22%)
2	PLP	A	701	1	15,15,16	3.84	4 (26%)	21,22,23	1.69	5 (23%)
5	GOL	B	505	-	5,5,5	0.28	0	5,5,5	1.46	1 (20%)
8	PEG	B	503	-	6,6,6	0.71	0	5,5,5	0.32	0
3	EPE	B	502	-	15,15,15	2.27	1 (6%)	19,20,20	1.41	4 (21%)
4	PGE	A	703	-	9,9,9	0.77	0	8,8,8	0.73	0
5	GOL	B	504	-	5,5,5	0.45	0	5,5,5	0.77	0

In the following table, the Chirals column lists the number of chiral outliers, the number of chiral centers analysed, the number of these observed in the model and the number defined in the Chemical Component Dictionary. Similar counts are reported in the Torsion and Rings columns. '-' means no outliers of that kind were identified.

Mol	Type	Chain	Res	Link	Chirals	Torsions	Rings
5	GOL	A	704	-	-	2/4/4/4	-
5	GOL	A	705	-	-	3/4/4/4	-
3	EPE	A	702	-	-	1/9/19/19	0/1/1/1
7	PMP	B	501	-	-	5/8/8/8	0/1/1/1
2	PLP	A	701	1	-	0/6/6/8	0/1/1/1
5	GOL	B	505	-	-	4/4/4/4	-
8	PEG	B	503	-	-	1/4/4/4	-
3	EPE	B	502	-	-	3/9/19/19	0/1/1/1
4	PGE	A	703	-	-	6/7/7/7	-
5	GOL	B	504	-	-	2/4/4/4	-

All (10) bond length outliers are listed below:

Mol	Chain	Res	Type	Atoms	Z	Observed(Å)	Ideal(Å)
2	A	701	PLP	C5-C4	10.12	1.51	1.40

Continued on next page...

Continued from previous page...

Mol	Chain	Res	Type	Atoms	Z	Observed(Å)	Ideal(Å)
7	B	501	PMP	C3-C2	9.37	1.50	1.41
2	A	701	PLP	C3-C2	9.05	1.50	1.41
3	B	502	EPE	C10-S	-8.30	1.65	1.77
3	A	702	EPE	C10-S	-8.00	1.66	1.77
7	B	501	PMP	C5-C4	6.98	1.50	1.40
7	B	501	PMP	C3-C4	5.87	1.48	1.40
2	A	701	PLP	C3-C4	4.98	1.49	1.40
3	A	702	EPE	O1S-S	2.26	1.51	1.45
2	A	701	PLP	C2-N1	2.17	1.37	1.33

All (20) bond angle outliers are listed below:

Mol	Chain	Res	Type	Atoms	Z	Observed(°)	Ideal(°)
3	A	702	EPE	C6-N1-C2	4.99	119.59	108.84
3	A	702	EPE	O2S-S-C10	3.43	111.91	106.73
2	A	701	PLP	O3P-P-O4P	-3.35	97.95	106.67
7	B	501	PMP	C3-C4-C5	-3.33	115.71	118.73
3	B	502	EPE	C6-N1-C2	3.14	115.61	108.84
2	A	701	PLP	C6-N1-C2	3.11	124.84	119.20
3	A	702	EPE	C2-C3-N4	-3.08	104.43	110.65
2	A	701	PLP	C4A-C4-C5	2.83	123.86	120.94
2	A	701	PLP	C6-C5-C4	2.82	120.41	118.10
5	B	505	GOL	O1-C1-C2	-2.74	98.05	110.38
7	B	501	PMP	O3P-P-O2P	2.72	117.99	107.80
7	B	501	PMP	C6-N1-C2	2.56	123.85	119.20
3	B	502	EPE	C9-N1-C6	-2.54	104.48	111.24
3	A	702	EPE	C9-N1-C6	-2.50	104.59	111.24
2	A	701	PLP	C3-C4-C5	-2.45	115.64	118.59
7	B	501	PMP	O2P-P-O4P	-2.42	100.37	106.67
7	B	501	PMP	C6-C5-C4	2.32	119.81	118.06
3	B	502	EPE	O3S-S-C10	2.29	110.49	106.00
3	B	502	EPE	C6-C5-N4	-2.04	106.54	110.65
3	A	702	EPE	O1S-S-C10	2.00	109.75	106.73

There are no chirality outliers.

All (27) torsion outliers are listed below:

Mol	Chain	Res	Type	Atoms
3	B	502	EPE	C8-C7-N4-C5
5	A	704	GOL	O1-C1-C2-O2
5	A	704	GOL	O1-C1-C2-C3
5	A	705	GOL	O1-C1-C2-O2

Continued on next page...

Continued from previous page...

Mol	Chain	Res	Type	Atoms
5	A	705	GOL	O1-C1-C2-C3
5	B	504	GOL	O1-C1-C2-C3
5	B	505	GOL	O1-C1-C2-C3
7	B	501	PMP	C3-C4-C4A-N4A
7	B	501	PMP	C5-C4-C4A-N4A
7	B	501	PMP	C5A-O4P-P-O1P
7	B	501	PMP	C5A-O4P-P-O2P
7	B	501	PMP	C5A-O4P-P-O3P
5	B	505	GOL	O2-C2-C3-O3
5	A	705	GOL	C1-C2-C3-O3
5	B	505	GOL	C1-C2-C3-O3
4	A	703	PGE	O3-C5-C6-O4
5	B	504	GOL	O1-C1-C2-O2
5	B	505	GOL	O1-C1-C2-O2
8	B	503	PEG	O1-C1-C2-O2
4	A	703	PGE	O2-C3-C4-O3
4	A	703	PGE	O1-C1-C2-O2
4	A	703	PGE	C4-C3-O2-C2
4	A	703	PGE	C6-C5-O3-C4
3	B	502	EPE	C8-C7-N4-C3
3	A	702	EPE	S-C10-C9-N1
4	A	703	PGE	C1-C2-O2-C3
3	B	502	EPE	N4-C7-C8-O8

There are no ring outliers.

4 monomers are involved in 8 short contacts:

Mol	Chain	Res	Type	Clashes	Symm-Clashes
3	A	702	EPE	3	0
3	B	502	EPE	2	0
4	A	703	PGE	1	0
5	B	504	GOL	2	0

5.7 Other polymers [i](#)

There are no such residues in this entry.

5.8 Polymer linkage issues [i](#)

There are no chain breaks in this entry.

6 Fit of model and data [i](#)

6.1 Protein, DNA and RNA chains [i](#)

In the following table, the column labelled ‘#RSRZ > 2’ contains the number (and percentage) of RSRZ outliers, followed by percent RSRZ outliers for the chain as percentile scores relative to all X-ray entries and entries of similar resolution. The OWAB column contains the minimum, median, 95th percentile and maximum values of the occupancy-weighted average B-factor per residue. The column labelled ‘Q < 0.9’ lists the number of (and percentage) of residues with an average occupancy less than 0.9.

Mol	Chain	Analysed	<RSRZ>	#RSRZ>2	OWAB(Å ²)	Q<0.9
1	A	410/410 (100%)	-0.85	1 (0%) 91 89	13, 25, 61, 111	1 (0%)
1	B	410/410 (100%)	-0.78	6 (1%) 72 63	13, 27, 70, 109	1 (0%)
All	All	820/820 (100%)	-0.81	7 (0%) 81 74	13, 26, 62, 111	2 (0%)

All (7) RSRZ outliers are listed below:

Mol	Chain	Res	Type	RSRZ
1	B	61	ALA	3.5
1	A	61	ALA	3.2
1	B	60	LEU	3.0
1	B	58	THR	2.7
1	B	382	GLY	2.7
1	B	187	MET	2.6
1	B	62	ALA	2.6

6.2 Non-standard residues in protein, DNA, RNA chains [i](#)

There are no non-standard protein/DNA/RNA residues in this entry.

6.3 Carbohydrates [i](#)

There are no oligosaccharides in this entry.

6.4 Ligands [i](#)

In the following table, the Atoms column lists the number of modelled atoms in the group and the number defined in the chemical component dictionary. The B-factors column lists the minimum, median, 95th percentile and maximum values of B factors of atoms in the group. The column labelled ‘Q < 0.9’ lists the number of atoms with occupancy less than 0.9.

Mol	Type	Chain	Res	Atoms	RSCC	RSR	B-factors(\AA^2)	Q<0.9
4	PGE	A	703	10/10	0.93	0.10	29,38,45,47	0
8	PEG	B	503	7/7	0.93	0.09	31,33,40,46	0
5	GOL	B	504	6/6	0.94	0.08	41,42,46,54	0
5	GOL	B	505	6/6	0.94	0.09	28,31,33,45	0
5	GOL	A	705	6/6	0.94	0.10	34,47,57,63	0
6	CA	A	708	1/1	0.95	0.08	48,48,48,48	0
5	GOL	A	704	6/6	0.97	0.07	21,23,31,37	0
3	EPE	A	702	15/15	0.98	0.07	18,30,46,46	0
3	EPE	B	502	15/15	0.98	0.07	29,40,51,55	0
7	PMP	B	501	16/16	0.98	0.05	21,32,39,43	0
2	PLP	A	701	15/16	0.98	0.06	14,24,32,34	0
6	CA	B	506	1/1	0.99	0.03	32,32,32,32	0
6	CA	A	707	1/1	0.99	0.03	33,33,33,33	0
6	CA	A	706	1/1	0.99	0.03	32,32,32,32	1

6.5 Other polymers [i](#)

There are no such residues in this entry.