



# Full wwPDB X-ray Structure Validation Report ⓘ

Mar 8, 2026 – 06:27 AM UTC

PDB ID : 5YGE / pdb\_00005yge  
Title : ArgA complexed with AceCoA and glutamate  
Authors : Yang, X.; Wu, L.; Ran, Y.; Xu, A.; Zhang, B.; Yang, X.; Zhang, R.; Rao, Z.;  
Li, J.  
Deposited on : 2017-09-22  
Resolution : 2.04 Å(reported)

This is a Full wwPDB X-ray Structure Validation Report for a publicly released PDB entry.

We welcome your comments at [validation@mail.wwpdb.org](mailto:validation@mail.wwpdb.org)

A user guide is available at

<https://www.wwpdb.org/validation/2017/XrayValidationReportHelp>

with specific help available everywhere you see the ⓘ symbol.

The types of validation reports are described at

<http://www.wwpdb.org/validation/2017/FAQs#types>.

---

The following versions of software and data (see [references ⓘ](#)) were used in the production of this report:

MolProbity	:	4-5-2 with Phenix2.0
Mogul	:	2022.3.0, CSD as543be (2022)
Xtriage (Phenix)	:	2.0
EDS	:	3.0
Buster-report	:	wwPDB partial adaption of 1.1.7 (2018)
Percentile statistics	:	20250101.v01 (using entries in the PDB archive January 1st 2025)
CCP4	:	9.0.010 (Gargrove)
Density-Fitness	:	1.0.12
Ideal geometry (proteins)	:	Engh & Huber (2001)
Ideal geometry (DNA, RNA)	:	Parkinson et al. (1996)
Validation Pipeline (wwPDB-VP)	:	2.49

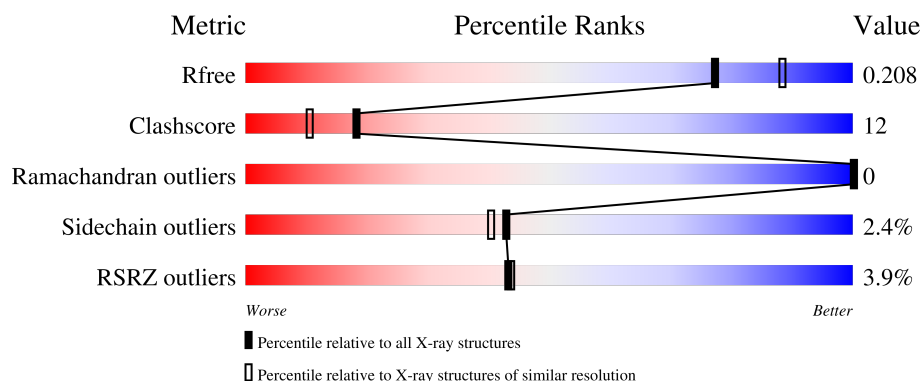
# 1 Overall quality at a glance

The following experimental techniques were used to determine the structure:

*X-RAY DIFFRACTION*

The reported resolution of this entry is 2.04 Å.

Percentile scores (ranging between 0-100) for global validation metrics of the entry are shown in the following graphic. The table shows the number of entries on which the scores are based.



Metric	Whole archive (#Entries)	Similar resolution (#Entries, resolution range(Å))
$R_{free}$	180053	2260 (2.04-2.04)
Clashscore	190562	2333 (2.04-2.04)
Ramachandran outliers	187476	2318 (2.04-2.04)
Sidechain outliers	187428	2318 (2.04-2.04)
RSRZ outliers	180081	2260 (2.04-2.04)

The table below summarises the geometric issues observed across the polymeric chains and their fit to the electron density. The red, orange, yellow and green segments of the lower bar indicate the fraction of residues that contain outliers for  $\geq 3$ , 2, 1 and 0 types of geometric quality criteria respectively. A grey segment represents the fraction of residues that are not modelled. The numeric value for each fraction is indicated below the corresponding segment, with a dot representing fractions  $\leq 5\%$ . The upper red bar (where present) indicates the fraction of residues that have poor fit to the electron density. The numeric value is given above the bar.

Mol	Chain	Length	Quality of chain
1	A	174	<div> <div>5%</div> <div> <div></div> <div>61%</div> <div>33%</div> <div>• •</div> </div> </div>
1	B	174	<div> <div>3%</div> <div> <div></div> <div>49%</div> <div>44%</div> <div>• •</div> </div> </div>

The following table lists non-polymeric compounds, carbohydrate monomers and non-standard residues in protein, DNA, RNA chains that are outliers for geometric or electron-density-fit criteria:

Mol	Type	Chain	Res	Chirality	Geometry	Clashes	Electron density
3	GLU	A	202	-	-	X	-
3	GLU	B	202	-	-	X	-

## 2 Entry composition [i](#)

There are 5 unique types of molecules in this entry. The entry contains 2969 atoms, of which 0 are hydrogens and 0 are deuteriums.

In the tables below, the ZeroOcc column contains the number of atoms modelled with zero occupancy, the AltConf column contains the number of residues with at least one atom in alternate conformation and the Trace column contains the number of residues modelled with at most 2 atoms.

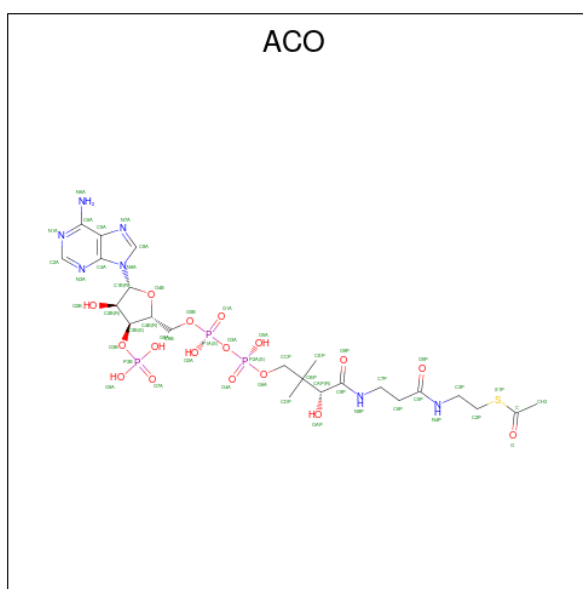
- Molecule 1 is a protein called Amino-acid acetyltransferase.

Mol	Chain	Residues	Atoms					ZeroOcc	AltConf	Trace
1	A	169	Total	C	N	O	S	0	0	0
			1336	857	230	243	6			
1	B	167	Total	C	N	O	S	0	0	0
			1317	847	225	239	6			

There are 2 discrepancies between the modelled and reference sequences:

Chain	Residue	Modelled	Actual	Comment	Reference
A	1	VAL	-	expression tag	UNP O33289
B	1	VAL	-	expression tag	UNP O33289

- Molecule 2 is ACETYL COENZYME \*A (CCD ID: ACO) (formula: C<sub>23</sub>H<sub>38</sub>N<sub>7</sub>O<sub>17</sub>P<sub>3</sub>S) (labeled as "Ligand of Interest" by depositor).



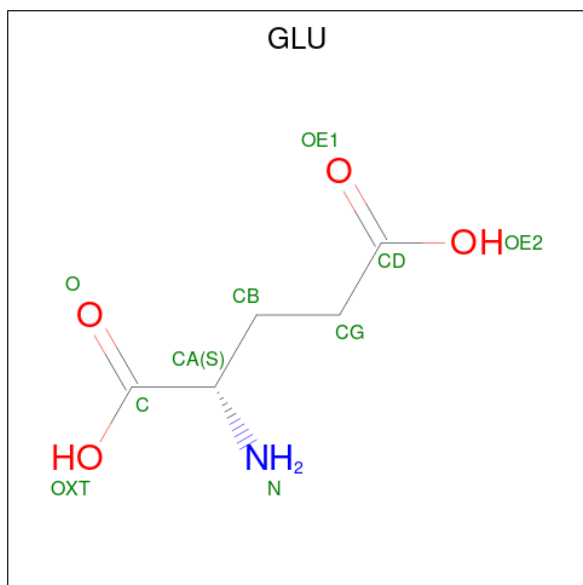
Mol	Chain	Residues	Atoms						ZeroOcc	AltConf
2	A	1	Total	C	N	O	P	S	0	0
			51	23	7	17	3	1		

*Continued on next page...*

Continued from previous page...

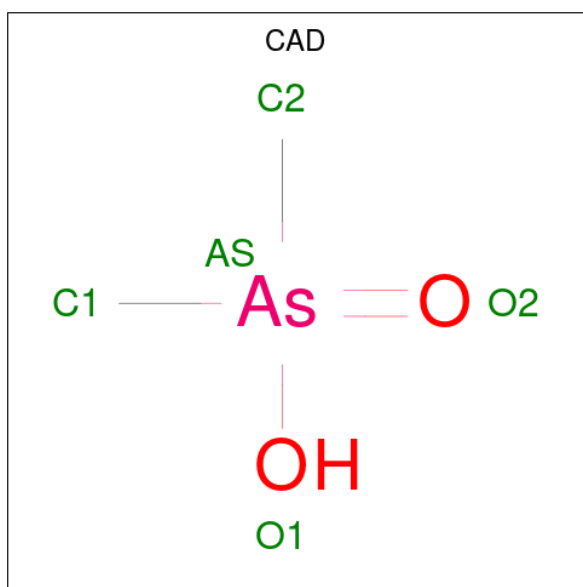
Mol	Chain	Residues	Atoms						ZeroOcc	AltConf
2	B	1	Total	C	N	O	P	S	0	0
			51	23	7	17	3	1		

- Molecule 3 is GLUTAMIC ACID (CCD ID: GLU) (formula:  $C_5H_9NO_4$ ) (labeled as "Ligand of Interest" by depositor).



Mol	Chain	Residues	Atoms				ZeroOcc	AltConf
3	A	1	Total	C	N	O	0	0
			10	5	1	4		
3	B	1	Total	C	N	O	0	0
			10	5	1	4		

- Molecule 4 is CACODYLIC ACID (CCD ID: CAD) (formula:  $C_2H_7AsO_2$ ).



Mol	Chain	Residues	Atoms				ZeroOcc	AltConf
4	A	1	Total	As	C	O	0	0
			4	1	2	1		
4	A	1	Total	As	C	O	0	0
			4	1	2	1		
4	B	1	Total	As	C	O	0	0
			4	1	2	1		
4	B	1	Total	As	C	O	0	0
			4	1	2	1		

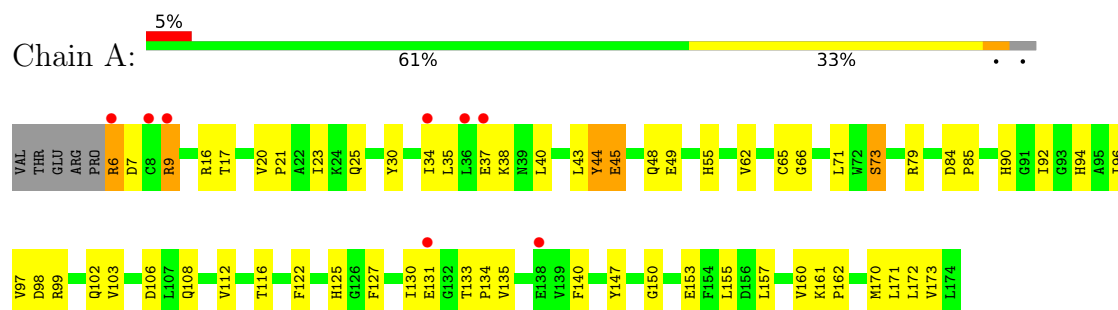
- Molecule 5 is water.

Mol	Chain	Residues	Atoms		ZeroOcc	AltConf
5	A	79	Total	O	0	0
			79	79		
5	B	99	Total	O	0	0
			99	99		

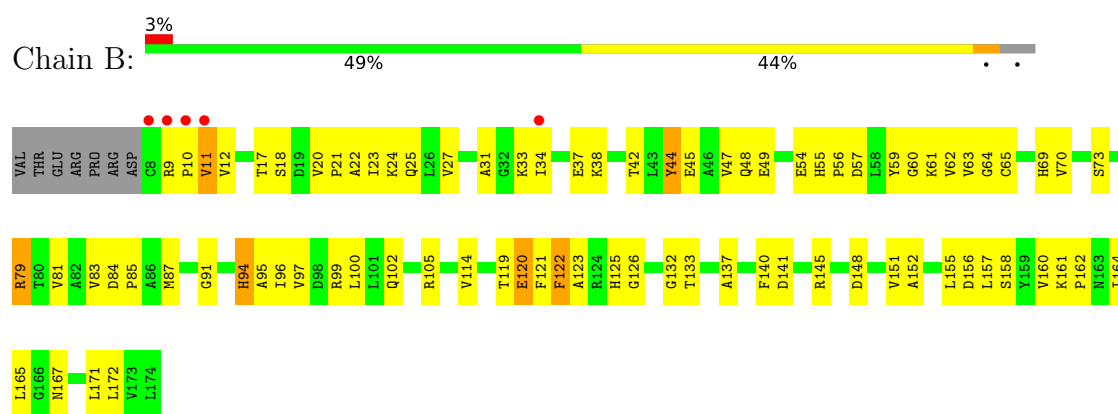
### 3 Residue-property plots [i](#)

These plots are drawn for all protein, RNA, DNA and oligosaccharide chains in the entry. The first graphic for a chain summarises the proportions of the various outlier classes displayed in the second graphic. The second graphic shows the sequence view annotated by issues in geometry and electron density. Residues are color-coded according to the number of geometric quality criteria for which they contain at least one outlier: green = 0, yellow = 1, orange = 2 and red = 3 or more. A red dot above a residue indicates a poor fit to the electron density ( $RSRZ > 2$ ). Stretches of 2 or more consecutive residues without any outlier are shown as a green connector. Residues present in the sample, but not in the model, are shown in grey.

#### • Molecule 1: Amino-acid acetyltransferase



#### • Molecule 1: Amino-acid acetyltransferase



## 4 Data and refinement statistics

Property	Value	Source
Space group	P 41 21 2	Depositor
Cell constants a, b, c, $\alpha$ , $\beta$ , $\gamma$	73.73Å 73.73Å 187.23Å 90.00° 90.00° 90.00°	Depositor
Resolution (Å)	36.17 – 2.04 36.17 – 2.04	Depositor EDS
% Data completeness (in resolution range)	99.8 (36.17-2.04) 99.7 (36.17-2.04)	Depositor EDS
$R_{merge}$	0.10	Depositor
$R_{sym}$	(Not available)	Depositor
$\langle I/\sigma(I) \rangle$ <sup>1</sup>	4.31 (at 2.05Å)	Xtriage
Refinement program	PHENIX 1.7.1 _743	Depositor
R, $R_{free}$	0.197 , 0.221 0.198 , 0.208	Depositor DCC
$R_{free}$ test set	1717 reflections (5.07%)	wwPDB-VP
Wilson B-factor (Å <sup>2</sup> )	24.2	Xtriage
Anisotropy	0.066	Xtriage
Bulk solvent $k_{sol}$ (e/Å <sup>3</sup> ), $B_{sol}$ (Å <sup>2</sup> )	0.36 , 40.2	EDS
L-test for twinning <sup>2</sup>	$\langle  L  \rangle = 0.50$ , $\langle L^2 \rangle = 0.33$	Xtriage
Estimated twinning fraction	No twinning to report.	Xtriage
$F_o, F_c$ correlation	0.95	EDS
Total number of atoms	2969	wwPDB-VP
Average B, all atoms (Å <sup>2</sup> )	28.0	wwPDB-VP

Xtriage's analysis on translational NCS is as follows: *The largest off-origin peak in the Patterson function is 5.42% of the height of the origin peak. No significant pseudotranslation is detected.*

<sup>1</sup>Intensities estimated from amplitudes.

<sup>2</sup>Theoretical values of  $\langle |L| \rangle$ ,  $\langle L^2 \rangle$  for acentric reflections are 0.5, 0.333 respectively for untwinned datasets, and 0.375, 0.2 for perfectly twinned datasets.



## 5 Model quality ⓘ

### 5.1 Standard geometry ⓘ

Bond lengths and bond angles in the following residue types are not validated in this section: ACO, CAD

The Z score for a bond length (or angle) is the number of standard deviations the observed value is removed from the expected value. A bond length (or angle) with  $|Z| > 5$  is considered an outlier worth inspection. RMSZ is the root-mean-square of all Z scores of the bond lengths (or angles).

Mol	Chain	Bond lengths		Bond angles	
		RMSZ	$\# Z  > 5$	RMSZ	$\# Z  > 5$
1	A	2.02	41/1363 (3.0%)	1.19	6/1852 (0.3%)
1	B	2.11	70/1344 (5.2%)	1.21	10/1827 (0.5%)
All	All	2.07	111/2707 (4.1%)	1.20	16/3679 (0.4%)

All (111) bond length outliers are listed below:

Mol	Chain	Res	Type	Atoms	Z	Observed(Å)	Ideal(Å)
1	A	44	TYR	C-O	-8.32	1.14	1.24
1	A	92	ILE	C-O	-8.13	1.15	1.24
1	B	62	VAL	C-O	-7.74	1.16	1.24
1	B	45	GLU	C-O	-7.56	1.14	1.24
1	A	66	GLY	C-O	-7.45	1.15	1.24
1	B	20	VAL	C-O	-7.27	1.18	1.24
1	B	119	THR	C-O	-7.25	1.15	1.24
1	B	60	GLY	C-O	-7.08	1.14	1.23
1	B	85	PRO	C-O	-7.07	1.15	1.24
1	B	17	THR	C-O	-7.07	1.15	1.24
1	A	98	ASP	C-O	-7.04	1.16	1.24
1	B	94	HIS	C-O	-6.79	1.16	1.24
1	A	112	VAL	C-O	-6.75	1.17	1.24
1	B	102	GLN	C-O	-6.73	1.16	1.24
1	B	44	TYR	C-O	-6.51	1.16	1.24
1	A	25	GLN	C-O	-6.43	1.16	1.24
1	B	123	ALA	C-O	-6.38	1.16	1.24
1	A	17	THR	C-O	-6.36	1.16	1.24
1	A	157	LEU	C-O	-6.35	1.16	1.24
1	B	83	VAL	C-O	-6.34	1.17	1.24
1	B	100	LEU	C-O	-6.34	1.16	1.24
1	B	167	ASN	C-O	-6.34	1.15	1.24
1	A	96	ILE	C-O	-6.31	1.17	1.24
1	B	148	ASP	C-O	-6.29	1.17	1.23

*Continued on next page...*

*Continued from previous page...*

Mol	Chain	Res	Type	Atoms	Z	Observed(Å)	Ideal(Å)
1	B	23	ILE	C-O	-6.25	1.17	1.24
1	B	164	ILE	C-O	-6.23	1.16	1.24
1	B	152	ALA	C-O	-6.21	1.16	1.24
1	A	48	GLN	C-O	-6.17	1.16	1.24
1	B	47	VAL	C-O	-6.15	1.17	1.24
1	A	103	VAL	C-O	-6.10	1.17	1.24
1	A	73	SER	C-O	-6.09	1.16	1.24
1	B	18	SER	C-O	-6.03	1.16	1.24
1	B	70	VAL	C-O	-6.02	1.17	1.24
1	B	42	THR	C-O	-6.02	1.17	1.24
1	B	97	VAL	C-O	-5.99	1.17	1.24
1	A	99	ARG	C-O	-5.92	1.17	1.24
1	B	25	GLN	C-O	-5.90	1.17	1.24
1	A	20	VAL	C-O	-5.85	1.17	1.24
1	A	150	GLY	C-O	-5.83	1.16	1.23
1	A	62	VAL	C-O	-5.81	1.18	1.24
1	B	137	ALA	C-O	-5.80	1.17	1.24
1	B	162	PRO	N-CD	5.78	1.55	1.47
1	B	157	LEU	C-O	-5.77	1.16	1.24
1	A	155	LEU	C-O	-5.75	1.17	1.24
1	A	55	HIS	C-N	5.75	1.41	1.34
1	B	81	VAL	C-O	-5.74	1.17	1.24
1	A	23	ILE	C-O	-5.72	1.17	1.24
1	B	69	HIS	C-O	-5.72	1.17	1.24
1	B	160	VAL	C-O	-5.71	1.18	1.24
1	B	151	VAL	C-O	-5.71	1.17	1.24
1	B	141	ASP	C-O	-5.70	1.17	1.24
1	B	48	GLN	C-O	-5.67	1.16	1.24
1	B	122	PHE	C-O	-5.64	1.17	1.24
1	B	61	LYS	C-O	-5.60	1.17	1.23
1	B	27	VAL	C-O	-5.60	1.17	1.24
1	A	65	CYS	C-O	-5.57	1.17	1.23
1	A	162	PRO	N-CD	5.56	1.55	1.47
1	B	24	LYS	C-O	-5.52	1.17	1.24
1	B	65	CYS	C-O	-5.51	1.17	1.23
1	A	140	PHE	C-O	-5.49	1.17	1.24
1	A	106	ASP	C-O	-5.48	1.17	1.24
1	B	132	GLY	C-O	-5.48	1.17	1.23
1	A	85	PRO	C-O	-5.47	1.17	1.24
1	A	173	VAL	C-O	-5.43	1.18	1.24
1	B	34	ILE	C-O	-5.42	1.17	1.23
1	B	172	LEU	C-O	-5.42	1.18	1.24

*Continued on next page...*

*Continued from previous page...*

Mol	Chain	Res	Type	Atoms	Z	Observed(Å)	Ideal(Å)
1	B	121	PHE	C-O	-5.42	1.17	1.24
1	B	79	ARG	C-O	-5.41	1.17	1.23
1	B	33	LYS	C-O	-5.40	1.17	1.24
1	A	45	GLU	C-O	-5.39	1.17	1.24
1	B	126	GLY	C-O	-5.36	1.16	1.24
1	B	99	ARG	C-O	-5.35	1.18	1.24
1	A	43	LEU	C-O	-5.32	1.18	1.24
1	A	130	ILE	C-O	-5.32	1.18	1.23
1	A	21	PRO	N-CD	5.32	1.55	1.47
1	B	140	PHE	C-O	-5.30	1.18	1.24
1	B	133	THR	C-N	5.29	1.40	1.33
1	B	161	LYS	C-N	5.29	1.40	1.33
1	B	158	SER	C-O	-5.25	1.17	1.24
1	A	84	ASP	C-O	-5.25	1.18	1.24
1	B	57	ASP	C-O	-5.24	1.17	1.24
1	B	133	THR	C-O	-5.23	1.17	1.23
1	B	171	LEU	C-O	-5.22	1.17	1.23
1	A	16	ARG	C-O	-5.18	1.17	1.23
1	B	165	LEU	C-O	-5.18	1.17	1.24
1	B	96	ILE	C-O	-5.17	1.18	1.24
1	B	12	VAL	C-O	-5.17	1.18	1.24
1	A	160	VAL	C-O	-5.16	1.19	1.24
1	A	147	TYR	C-O	-5.15	1.17	1.23
1	A	134	PRO	N-CD	5.15	1.54	1.47
1	B	84	ASP	C-N	5.14	1.40	1.33
1	A	85	PRO	N-CD	5.14	1.54	1.47
1	B	38	LYS	C-O	-5.13	1.18	1.23
1	B	156	ASP	C-O	-5.13	1.17	1.23
1	A	97	VAL	C-O	-5.12	1.18	1.24
1	A	108	GLN	C-O	-5.12	1.16	1.23
1	A	102	GLN	C-O	-5.11	1.18	1.24
1	B	59	TYR	C-O	-5.09	1.16	1.23
1	B	155	LEU	C-O	-5.09	1.18	1.24
1	B	162	PRO	C-O	-5.09	1.17	1.23
1	B	145	ARG	C-O	-5.08	1.17	1.24
1	B	22	ALA	C-O	-5.07	1.18	1.24
1	B	10	PRO	C-N	-5.06	1.24	1.33
1	B	21	PRO	N-CD	5.04	1.54	1.47
1	B	56	PRO	N-CD	5.04	1.54	1.47
1	A	135	VAL	C-O	-5.03	1.17	1.23
1	A	40	LEU	C-O	-5.02	1.18	1.24
1	B	55	HIS	C-N	5.02	1.40	1.34

*Continued on next page...*

*Continued from previous page...*

Mol	Chain	Res	Type	Atoms	Z	Observed(Å)	Ideal(Å)
1	A	71	LEU	C-O	-5.02	1.16	1.23
1	B	95	ALA	C-O	-5.01	1.18	1.24
1	B	64	GLY	C-O	-5.01	1.18	1.24

All (16) bond angle outliers are listed below:

Mol	Chain	Res	Type	Atoms	Z	Observed(°)	Ideal(°)
1	B	10	PRO	CA-C-O	8.80	132.41	121.67
1	A	133	THR	CA-C-N	-6.37	113.22	119.78
1	A	133	THR	C-N-CA	-6.37	113.22	119.78
1	A	20	VAL	O-C-N	6.22	124.48	120.07
1	B	133	THR	CA-C-N	-5.99	113.61	119.78
1	B	133	THR	C-N-CA	-5.99	113.61	119.78
1	B	20	VAL	O-C-N	5.89	124.19	120.42
1	B	63	VAL	N-CA-C	5.70	117.67	112.43
1	A	161	LYS	CA-C-N	-5.45	114.15	119.76
1	A	161	LYS	C-N-CA	-5.45	114.15	119.76
1	B	34	ILE	CB-CA-C	-5.34	105.50	111.80
1	B	161	LYS	CA-C-N	-5.25	114.55	119.90
1	B	161	LYS	C-N-CA	-5.25	114.55	119.90
1	B	84	ASP	CA-C-N	-5.04	113.74	119.28
1	B	84	ASP	C-N-CA	-5.04	113.74	119.28
1	A	116	THR	N-CA-C	5.02	116.87	108.99

There are no chirality outliers.

There are no planarity outliers.

## 5.2 Too-close contacts [i](#)

In the following table, the Non-H and H(model) columns list the number of non-hydrogen atoms and hydrogen atoms in the chain respectively. The H(added) column lists the number of hydrogen atoms added and optimized by MolProbity. The Clashes column lists the number of clashes within the asymmetric unit, whereas Symm-Clashes lists symmetry-related clashes.

Mol	Chain	Non-H	H(model)	H(added)	Clashes	Symm-Clashes
1	A	1336	0	1341	31	1
1	B	1317	0	1324	33	1
2	A	51	0	34	16	0
2	B	51	0	34	9	0
3	A	10	0	5	6	0
3	B	10	0	5	9	0

*Continued on next page...*

*Continued from previous page...*

Mol	Chain	Non-H	H(model)	H(added)	Clashes	Symm-Clashes
4	A	8	0	0	1	0
4	B	8	0	0	2	0
5	A	79	0	0	1	1
5	B	99	0	0	2	1
All	All	2969	0	2743	67	2

The all-atom clashscore is defined as the number of clashes found per 1000 atoms (including hydrogen atoms). The all-atom clashscore for this structure is 12.

All (67) close contacts within the same asymmetric unit are listed below, sorted by their clash magnitude.

Atom-1	Atom-2	Interatomic distance (Å)	Clash overlap (Å)
1:B:79:ARG:NH2	3:B:202:GLU:HG2	1.62	1.14
2:A:201:ACO:H8A	2:A:201:ACO:H51A	1.30	1.10
1:A:7:ASP:H	2:A:201:ACO:H61A	1.07	0.97
1:B:94:HIS:HD2	1:B:125:HIS:HE1	1.12	0.97
1:A:94:HIS:HD2	1:A:125:HIS:NE2	1.65	0.95
2:A:201:ACO:H8A	2:A:201:ACO:C5B	1.98	0.93
1:B:94:HIS:HD2	1:B:125:HIS:CE1	1.88	0.90
1:A:6:ARG:HA	2:A:201:ACO:N6A	1.87	0.88
1:A:79:ARG:NH1	3:A:202:GLU:HG2	1.92	0.83
1:B:79:ARG:HH21	3:B:202:GLU:HG2	1.42	0.83
1:A:7:ASP:N	2:A:201:ACO:H61A	1.80	0.78
1:A:49:GLU:OE1	3:A:202:GLU:HG3	1.83	0.78
1:B:49:GLU:OE1	3:B:202:GLU:HG3	1.85	0.77
1:B:79:ARG:HH21	3:B:202:GLU:HA	1.52	0.74
1:B:122:PHE:HE2	2:B:201:ACO:H22	1.55	0.71
1:A:79:ARG:HA	2:A:201:ACO:HH31	1.71	0.71
2:A:201:ACO:H51A	2:A:201:ACO:C8A	2.15	0.70
1:B:94:HIS:CD2	1:B:125:HIS:HE1	2.04	0.67
1:B:79:ARG:HH22	3:B:202:GLU:HG2	1.53	0.67
1:B:79:ARG:HA	2:B:201:ACO:HH31	1.77	0.66
1:B:114:VAL:CG2	2:B:201:ACO:HH32	2.26	0.65
1:A:94:HIS:CD2	1:A:125:HIS:NE2	2.56	0.64
1:B:87:MET:CE	4:B:203:CAD:C1	2.77	0.62
1:A:94:HIS:CE1	2:A:201:ACO:H52A	2.34	0.62
1:B:11:VAL:HG13	1:B:54:GLU:HB2	1.83	0.60
1:A:79:ARG:HH11	3:A:202:GLU:HA	1.67	0.60
1:A:44:TYR:CZ	1:B:73:SER:HB3	2.38	0.58
1:A:6:ARG:CG	1:A:6:ARG:HH11	2.16	0.58
1:A:79:ARG:HD2	3:A:202:GLU:HA	1.86	0.58

*Continued on next page...*

*Continued from previous page...*

Atom-1	Atom-2	Interatomic distance (Å)	Clash overlap (Å)
1:B:11:VAL:HG22	1:B:54:GLU:HB2	1.84	0.57
1:A:6:ARG:HA	2:A:201:ACO:H61A	1.63	0.57
1:A:94:HIS:HE1	2:A:201:ACO:O7A	1.87	0.57
1:B:94:HIS:CD2	1:B:125:HIS:CE1	2.79	0.57
1:A:45:GLU:OE1	5:A:301:HOH:O	2.17	0.56
1:B:94:HIS:HE1	2:B:201:ACO:O7A	1.88	0.56
1:B:114:VAL:HG23	2:B:201:ACO:HH32	1.88	0.55
1:A:127:PHE:HB3	1:A:170:MET:HE2	1.89	0.53
1:A:122:PHE:HE2	2:A:201:ACO:H21	1.73	0.53
1:B:125:HIS:HD2	5:B:370:HOH:O	1.90	0.53
1:A:6:ARG:HH11	1:A:6:ARG:HG3	1.75	0.51
1:A:79:ARG:HH12	3:A:202:GLU:HG2	1.74	0.50
1:A:122:PHE:CE2	2:A:201:ACO:H21	2.46	0.50
1:B:79:ARG:CD	3:B:202:GLU:HA	2.42	0.50
2:A:201:ACO:H8A	2:A:201:ACO:P1A	2.52	0.49
2:B:201:ACO:H3B	2:B:201:ACO:H8A	1.95	0.48
1:A:6:ARG:HD3	2:A:201:ACO:H62A	1.78	0.48
1:B:11:VAL:HG22	1:B:11:VAL:O	2.15	0.47
1:A:6:ARG:CG	1:A:6:ARG:NH1	2.77	0.47
1:B:31:ALA:HB1	1:B:37:GLU:HG3	1.96	0.46
1:B:79:ARG:HH21	3:B:202:GLU:CG	2.22	0.45
1:B:122:PHE:CE2	2:B:201:ACO:H22	2.44	0.45
1:A:7:ASP:N	2:A:201:ACO:N6A	2.51	0.45
1:B:49:GLU:OE1	3:B:202:GLU:CG	2.62	0.44
1:A:73:SER:HB3	1:B:44:TYR:CZ	2.53	0.44
1:B:105:ARG:NH2	5:B:302:HOH:O	2.36	0.44
1:A:94:HIS:HE1	2:A:201:ACO:H52A	1.80	0.44
1:B:91:GLY:HA2	2:B:201:ACO:O1A	2.18	0.43
1:A:171:LEU:HG	1:A:172:LEU:N	2.34	0.43
1:A:30:TYR:O	1:A:34:ILE:HB	2.19	0.42
1:A:37:GLU:HG3	1:A:38:LYS:N	2.34	0.42
1:A:90:HIS:HB3	4:A:203:CAD:C1	2.49	0.42
1:B:9:ARG:HA	1:B:9:ARG:HE	1.85	0.41
1:B:94:HIS:CE1	2:B:201:ACO:O7A	2.70	0.41
1:B:11:VAL:CG1	1:B:54:GLU:HB2	2.50	0.41
1:A:49:GLU:OE1	3:A:202:GLU:N	2.54	0.40
1:B:79:ARG:HD2	3:B:202:GLU:HA	2.03	0.40
1:B:87:MET:HE1	4:B:203:CAD:C1	2.51	0.40

All (2) symmetry-related close contacts are listed below. The label for Atom-2 includes the symmetry operator and encoded unit-cell translations to be applied.

Atom-1	Atom-2	Interatomic distance (Å)	Clash overlap (Å)
5:A:319:HOH:O	5:B:307:HOH:O[6_554]	1.93	0.27
1:A:9:ARG:NH2	1:B:120:GLU:OE2[3_455]	2.00	0.20

## 5.3 Torsion angles [i](#)

### 5.3.1 Protein backbone [i](#)

In the following table, the Percentiles column shows the percent Ramachandran outliers of the chain as a percentile score with respect to all X-ray entries followed by that with respect to entries of similar resolution.

The Analysed column shows the number of residues for which the backbone conformation was analysed, and the total number of residues.

Mol	Chain	Analysed	Favoured	Allowed	Outliers	Percentiles	
1	A	167/174 (96%)	163 (98%)	4 (2%)	0	100	100
1	B	165/174 (95%)	161 (98%)	4 (2%)	0	100	100
All	All	332/348 (95%)	324 (98%)	8 (2%)	0	100	100

There are no Ramachandran outliers to report.

### 5.3.2 Protein sidechains [i](#)

In the following table, the Percentiles column shows the percent sidechain outliers of the chain as a percentile score with respect to all X-ray entries followed by that with respect to entries of similar resolution.

The Analysed column shows the number of residues for which the sidechain conformation was analysed, and the total number of residues.

Mol	Chain	Analysed	Rotameric	Outliers	Percentiles	
1	A	144/149 (97%)	139 (96%)	5 (4%)	32	27
1	B	142/149 (95%)	140 (99%)	2 (1%)	59	60
All	All	286/298 (96%)	279 (98%)	7 (2%)	43	40

All (7) residues with a non-rotameric sidechain are listed below:

Mol	Chain	Res	Type
1	A	6	ARG
1	A	9	ARG

*Continued on next page...*

*Continued from previous page...*

Mol	Chain	Res	Type
1	A	35	LEU
1	A	131	GLU
1	A	153	GLU
1	B	11	VAL
1	B	120	GLU

Sometimes sidechains can be flipped to improve hydrogen bonding and reduce clashes. All (4) such sidechains are listed below:

Mol	Chain	Res	Type
1	A	94	HIS
1	B	94	HIS
1	B	108	GLN
1	B	125	HIS

### 5.3.3 RNA [i](#)

There are no RNA molecules in this entry.

## 5.4 Non-standard residues in protein, DNA, RNA chains [i](#)

There are no non-standard protein/DNA/RNA residues in this entry.

## 5.5 Carbohydrates [i](#)

There are no oligosaccharides in this entry.

## 5.6 Ligand geometry [i](#)

8 ligands are modelled in this entry.

In the following table, the Counts columns list the number of bonds (or angles) for which Mogul statistics could be retrieved, the number of bonds (or angles) that are observed in the model and the number of bonds (or angles) that are defined in the Chemical Component Dictionary. The Link column lists molecule types, if any, to which the group is linked. The Z score for a bond length (or angle) is the number of standard deviations the observed value is removed from the expected value. A bond length (or angle) with  $|Z| > 2$  is considered an outlier worth inspection. RMSZ is the root-mean-square of all Z scores of the bond lengths (or angles).



Mol	Type	Chain	Res	Link	Bond lengths			Bond angles		
					Counts	RMSZ	# Z  > 2	Counts	RMSZ	# Z  > 2
3	GLU	B	202	-	8,9,9	1.61	3 (37%)	8,11,11	0.75	0
4	CAD	B	203	-	0,3,4	-	-	1,3,6	8.86	1 (100%)
4	CAD	A	203	-	0,3,4	-	-	1,3,6	8.34	1 (100%)
2	ACO	A	201	-	51,53,53	2.14	14 (27%)	73,79,79	1.84	19 (26%)
2	ACO	B	201	-	51,53,53	1.94	15 (29%)	73,79,79	1.71	13 (17%)
4	CAD	A	204	-	0,3,4	-	-	1,3,6	7.99	1 (100%)
3	GLU	A	202	-	8,9,9	1.18	0	8,11,11	0.80	0
4	CAD	B	204	-	0,3,4	-	-	1,3,6	8.16	1 (100%)

In the following table, the Chirals column lists the number of chiral outliers, the number of chiral centers analysed, the number of these observed in the model and the number defined in the Chemical Component Dictionary. Similar counts are reported in the Torsion and Rings columns. '-' means no outliers of that kind were identified.

Mol	Type	Chain	Res	Link	Chirals	Torsions	Rings
2	ACO	B	201	-	-	8/51/67/67	0/3/3/3
3	GLU	A	202	-	-	5/9/9/9	-
3	GLU	B	202	-	-	6/9/9/9	-
2	ACO	A	201	-	-	11/51/67/67	0/3/3/3

All (32) bond length outliers are listed below:

Mol	Chain	Res	Type	Atoms	Z	Observed(Å)	Ideal(Å)
2	A	201	ACO	P2A-O3A	-6.94	1.52	1.59
2	A	201	ACO	P1A-O3A	-5.23	1.53	1.59
2	A	201	ACO	C5A-C4A	4.67	1.47	1.39
2	B	201	ACO	P2A-O3A	-4.62	1.54	1.59
2	A	201	ACO	C5A-N7A	-4.30	1.31	1.39
2	B	201	ACO	C5A-C4A	4.06	1.46	1.39
2	B	201	ACO	P1A-O3A	-3.92	1.55	1.59
2	B	201	ACO	C5A-N7A	-3.90	1.32	1.39
2	A	201	ACO	P2A-O4A	-3.49	1.38	1.50
2	B	201	ACO	C4A-N9A	-3.30	1.30	1.37
2	A	201	ACO	P1A-O1A	-3.26	1.39	1.50
2	B	201	ACO	P2A-O5A	-3.24	1.40	1.55
2	A	201	ACO	C-S1P	-3.24	1.57	1.75
2	B	201	ACO	O9P-C9P	-3.16	1.17	1.23
2	B	201	ACO	C-S1P	-3.15	1.58	1.75
2	A	201	ACO	P1A-O2A	-3.08	1.41	1.55
2	A	201	ACO	P2A-O5A	-2.98	1.41	1.55

Continued on next page...

*Continued from previous page...*

Mol	Chain	Res	Type	Atoms	Z	Observed(Å)	Ideal(Å)
2	B	201	ACO	P1A-O2A	-2.92	1.41	1.55
2	A	201	ACO	C4A-N9A	-2.85	1.31	1.37
2	B	201	ACO	P2A-O4A	-2.68	1.41	1.50
2	B	201	ACO	P3B-O9A	-2.68	1.44	1.54
2	A	201	ACO	C8A-N9A	-2.66	1.33	1.37
2	B	201	ACO	P1A-O1A	-2.55	1.42	1.50
3	B	202	GLU	O-C	2.54	1.29	1.22
2	B	201	ACO	P3B-O8A	-2.28	1.46	1.54
2	B	201	ACO	OAP-CAP	-2.25	1.38	1.42
2	A	201	ACO	O9P-C9P	-2.23	1.19	1.23
2	A	201	ACO	P1A-O5B	-2.14	1.51	1.59
2	A	201	ACO	O5P-C5P	-2.12	1.19	1.23
3	B	202	GLU	OE2-CD	-2.11	1.23	1.30
2	B	201	ACO	CEP-CBP	-2.11	1.49	1.53
3	B	202	GLU	CB-CA	-2.03	1.48	1.53

All (36) bond angle outliers are listed below:

Mol	Chain	Res	Type	Atoms	Z	Observed(°)	Ideal(°)
4	B	203	CAD	C1-AS-C2	8.86	109.80	97.34
4	A	203	CAD	C1-AS-C2	8.34	109.06	97.34
4	B	204	CAD	C1-AS-C2	8.16	108.82	97.34
4	A	204	CAD	C1-AS-C2	7.99	108.57	97.34
2	B	201	ACO	C2P-C3P-N4P	6.42	125.82	112.41
2	B	201	ACO	C5A-C4A-N3A	-5.79	118.74	126.72
2	A	201	ACO	C5A-C4A-N3A	-5.23	119.51	126.72
2	A	201	ACO	N3A-C4A-N9A	4.87	135.45	127.17
2	A	201	ACO	C2P-C3P-N4P	4.56	121.93	112.41
2	B	201	ACO	N3A-C4A-N9A	4.39	134.64	127.17
2	A	201	ACO	C3P-N4P-C5P	4.14	130.54	122.82
2	A	201	ACO	C2B-C1B-N9A	-3.94	103.51	113.30
2	B	201	ACO	C2A-N3A-C4A	3.30	119.88	111.83
2	B	201	ACO	C2B-C1B-N9A	-2.97	105.92	113.30
2	A	201	ACO	N6A-C6A-N1A	2.93	124.91	118.38
2	A	201	ACO	C5B-C4B-C3B	-2.92	104.67	114.38
2	A	201	ACO	C2A-N3A-C4A	2.87	118.84	111.83
2	B	201	ACO	O4B-C1B-N9A	2.82	113.51	108.09
2	A	201	ACO	N3A-C2A-N1A	-2.74	124.43	128.58
2	A	201	ACO	O6A-CCP-CBP	2.72	114.91	110.55
2	B	201	ACO	O5P-C5P-C6P	-2.70	117.13	122.02
2	B	201	ACO	C6P-C5P-N4P	2.61	121.11	116.34
2	A	201	ACO	C4A-C5A-N7A	-2.60	107.61	110.58

*Continued on next page...*

*Continued from previous page...*

Mol	Chain	Res	Type	Atoms	Z	Observed(°)	Ideal(°)
2	B	201	ACO	O8A-P3B-O7A	2.59	120.92	110.83
2	B	201	ACO	N3A-C2A-N1A	-2.49	124.82	128.58
2	A	201	ACO	CDP-CBP-CCP	2.47	112.30	108.22
2	A	201	ACO	O9A-P3B-O8A	2.42	116.87	107.80
2	A	201	ACO	C2A-N1A-C6A	2.26	122.45	118.73
2	A	201	ACO	O3A-P2A-O4A	2.25	117.49	110.70
2	A	201	ACO	C6P-C7P-N8P	2.23	116.75	112.00
2	A	201	ACO	C3B-C2B-C1B	2.19	104.72	99.89
2	A	201	ACO	C2B-C3B-C4B	2.14	106.98	103.24
2	B	201	ACO	N6A-C6A-N1A	2.11	123.08	118.38
2	B	201	ACO	O3B-C3B-C2B	2.10	119.20	111.68
2	A	201	ACO	C4A-N9A-C8A	2.06	107.90	105.74
2	B	201	ACO	CAP-C9P-N8P	2.01	120.29	116.48

There are no chirality outliers.

All (30) torsion outliers are listed below:

Mol	Chain	Res	Type	Atoms
2	A	201	ACO	C5B-O5B-P1A-O2A
2	A	201	ACO	C5B-O5B-P1A-O3A
2	A	201	ACO	N8P-C9P-CAP-OAP
2	B	201	ACO	N8P-C9P-CAP-OAP
2	B	201	ACO	C3P-C2P-S1P-C
2	A	201	ACO	O5P-C5P-N4P-C3P
2	A	201	ACO	C6P-C5P-N4P-C3P
2	B	201	ACO	O-C-S1P-C2P
3	A	202	GLU	OXT-C-CA-N
2	B	201	ACO	CH3-C-S1P-C2P
2	A	201	ACO	C4B-C3B-O3B-P3B
3	B	202	GLU	OXT-C-CA-CB
2	A	201	ACO	P2A-O3A-P1A-O1A
2	A	201	ACO	O9P-C9P-CAP-OAP
2	B	201	ACO	O9P-C9P-CAP-OAP
2	A	201	ACO	O-C-S1P-C2P
3	B	202	GLU	O-C-CA-CB
2	B	201	ACO	CCP-O6A-P2A-O4A
2	A	201	ACO	P2A-O3A-P1A-O2A
2	B	201	ACO	P2A-O3A-P1A-O2A
3	A	202	GLU	OXT-C-CA-CB
3	B	202	GLU	OE1-CD-CG-CB
3	A	202	GLU	O-C-CA-CB
3	B	202	GLU	OE2-CD-CG-CB

*Continued on next page...*

*Continued from previous page...*

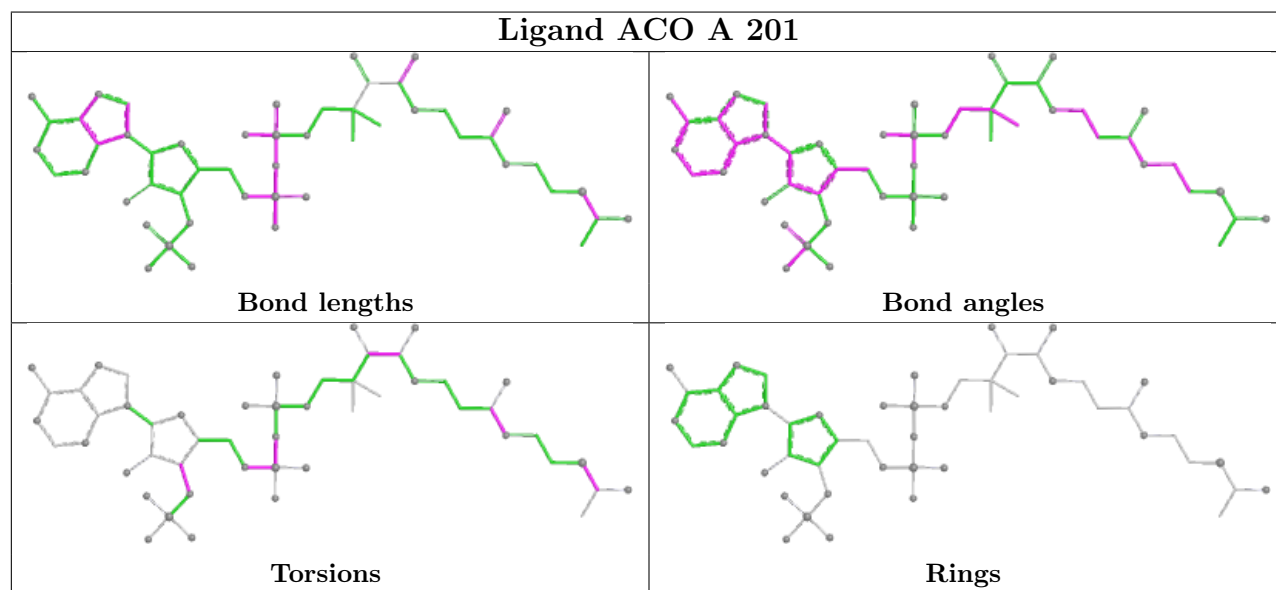
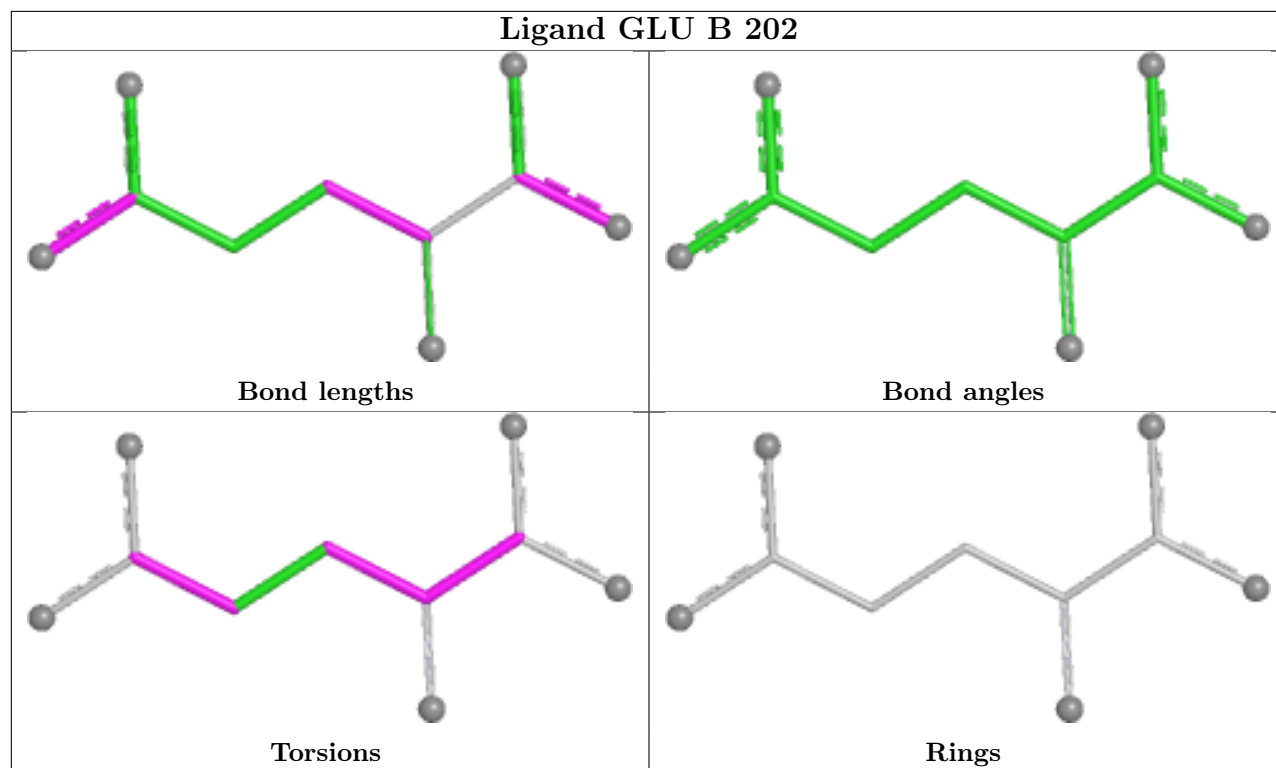
Mol	Chain	Res	Type	Atoms
3	A	202	GLU	OE2-CD-CG-CB
3	A	202	GLU	OE1-CD-CG-CB
2	A	201	ACO	CH3-C-S1P-C2P
3	B	202	GLU	C-CA-CB-CG
2	B	201	ACO	C4B-C5B-O5B-P1A
3	B	202	GLU	OXT-C-CA-N

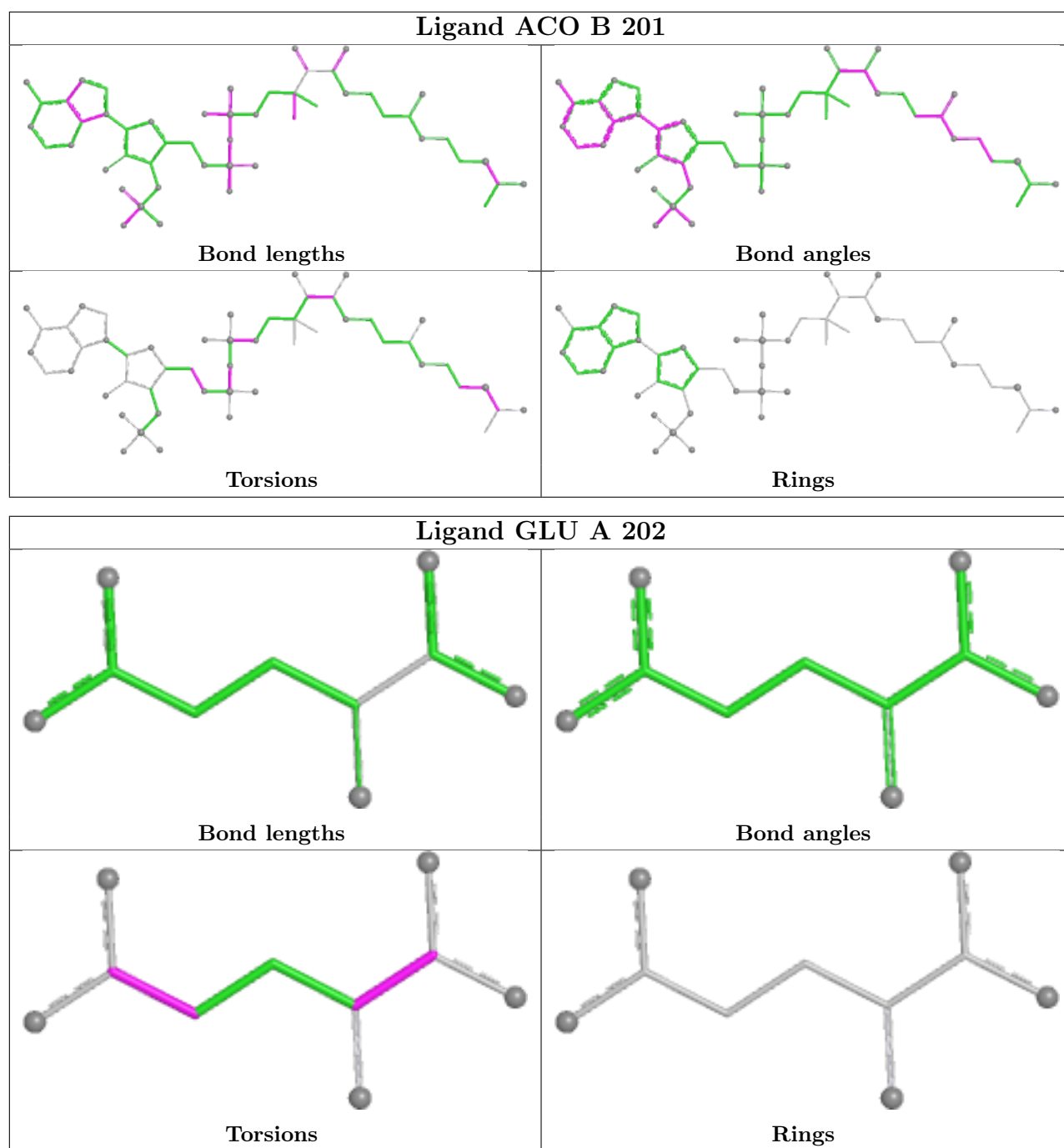
There are no ring outliers.

6 monomers are involved in 43 short contacts:

Mol	Chain	Res	Type	Clashes	Symm-Clashes
3	B	202	GLU	9	0
4	B	203	CAD	2	0
4	A	203	CAD	1	0
2	A	201	ACO	16	0
2	B	201	ACO	9	0
3	A	202	GLU	6	0

The following is a two-dimensional graphical depiction of Mogul quality analysis of bond lengths, bond angles, torsion angles, and ring geometry for all instances of the Ligand of Interest. In addition, ligands with molecular weight > 250 and outliers as shown on the validation Tables will also be included. For torsion angles, if less than 5% of the Mogul distribution of torsion angles is within 10 degrees of the torsion angle in question, then that torsion angle is considered an outlier. Any bond that is central to one or more torsion angles identified as an outlier by Mogul will be highlighted in the graph. For rings, the root-mean-square deviation (RMSD) between the ring in question and similar rings identified by Mogul is calculated over all ring torsion angles. If the average RMSD is greater than 60 degrees and the minimal RMSD between the ring in question and any Mogul-identified rings is also greater than 60 degrees, then that ring is considered an outlier. The outliers are highlighted in purple. The color gray indicates Mogul did not find sufficient equivalents in the CSD to analyse the geometry.





## 5.7 Other polymers [i](#)

There are no such residues in this entry.

## 5.8 Polymer linkage issues [i](#)

There are no chain breaks in this entry.

## 6 Fit of model and data [i](#)

### 6.1 Protein, DNA and RNA chains [i](#)

In the following table, the column labelled ‘#RSRZ > 2’ contains the number (and percentage) of RSRZ outliers, followed by percent RSRZ outliers for the chain as percentile scores relative to all X-ray entries and entries of similar resolution. The OWAB column contains the minimum, median, 95<sup>th</sup> percentile and maximum values of the occupancy-weighted average B-factor per residue. The column labelled ‘Q < 0.9’ lists the number of (and percentage) of residues with an average occupancy less than 0.9.

Mol	Chain	Analysed	<RSRZ>	#RSRZ>2	OWAB(Å <sup>2</sup> )	Q<0.9
1	A	169/174 (97%)	0.18	8 (4%) 36 36	12, 26, 52, 73	0
1	B	167/174 (95%)	-0.12	5 (2%) 52 53	11, 21, 46, 81	0
All	All	336/348 (96%)	0.03	13 (3%) 43 44	11, 24, 50, 81	0

All (13) RSRZ outliers are listed below:

Mol	Chain	Res	Type	RSRZ
1	B	11	VAL	5.3
1	A	8	CYS	4.3
1	B	9	ARG	4.2
1	B	8	CYS	4.0
1	B	10	PRO	3.9
1	A	6	ARG	3.3
1	A	9	ARG	3.1
1	A	138	GLU	2.6
1	A	36	LEU	2.5
1	A	131	GLU	2.4
1	A	34	ILE	2.1
1	A	37	GLU	2.1
1	B	34	ILE	2.1

### 6.2 Non-standard residues in protein, DNA, RNA chains [i](#)

There are no non-standard protein/DNA/RNA residues in this entry.

### 6.3 Carbohydrates [i](#)

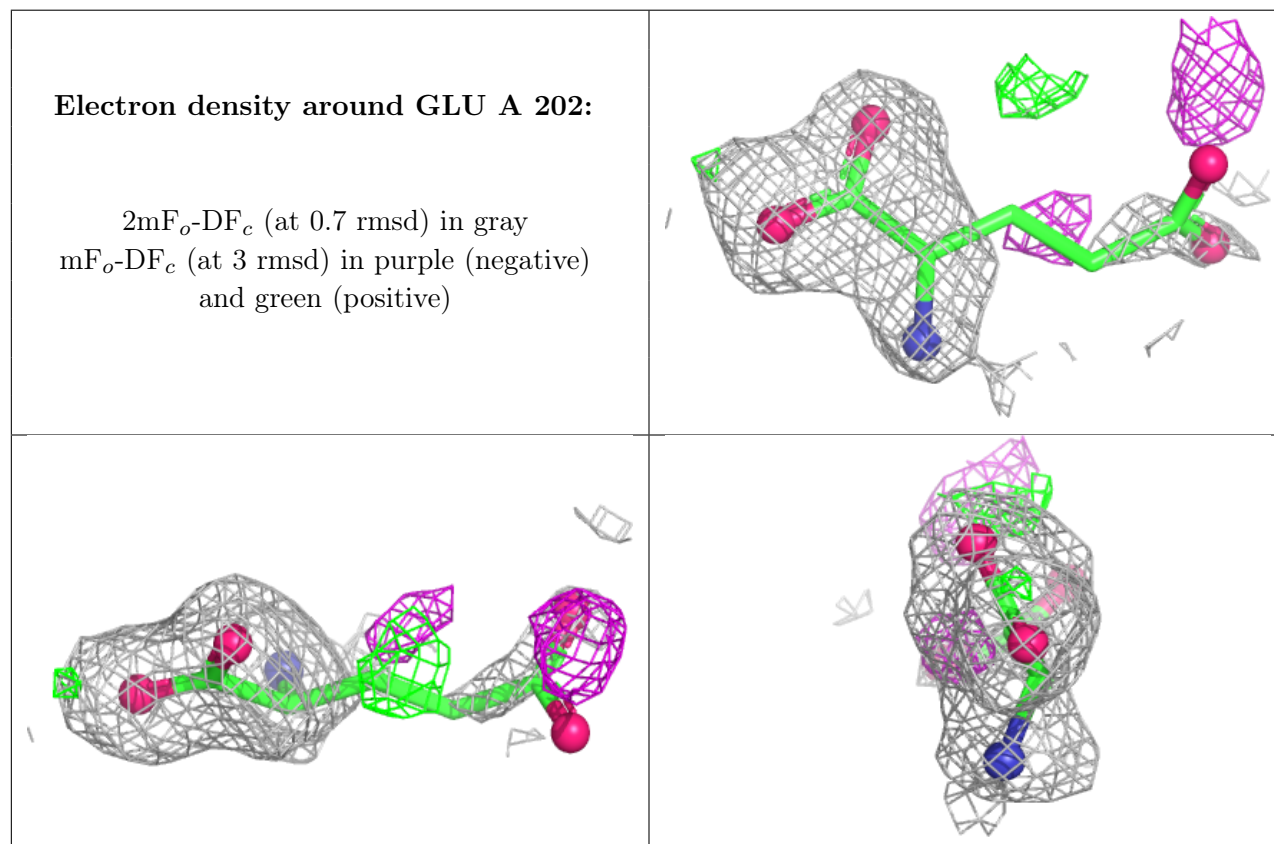
There are no oligosaccharides in this entry.

## 6.4 Ligands ⓘ

In the following table, the Atoms column lists the number of modelled atoms in the group and the number defined in the chemical component dictionary. The B-factors column lists the minimum, median, 95<sup>th</sup> percentile and maximum values of B factors of atoms in the group. The column labelled 'Q< 0.9' lists the number of atoms with occupancy less than 0.9.

Mol	Type	Chain	Res	Atoms	RSCC	RSR	B-factors(Å <sup>2</sup> )	Q<0.9
3	GLU	A	202	10/10	0.76	0.22	48,66,84,84	0
3	GLU	B	202	10/10	0.84	0.19	35,59,82,85	0
4	CAD	B	203	4/5	0.88	0.19	43,69,80,121	1
4	CAD	A	203	4/5	0.90	0.21	31,60,71,94	1
2	ACO	A	201	51/51	0.93	0.16	22,49,119,124	0
2	ACO	B	201	51/51	0.94	0.14	18,39,77,80	0
4	CAD	A	204	4/5	0.97	0.13	32,44,56,76	1
4	CAD	B	204	4/5	0.98	0.14	27,30,54,100	1

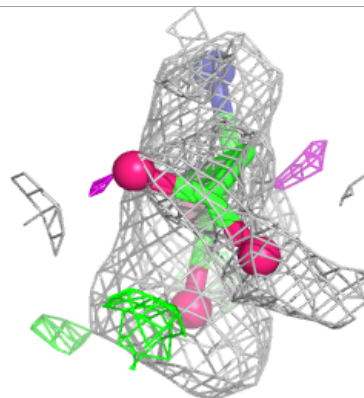
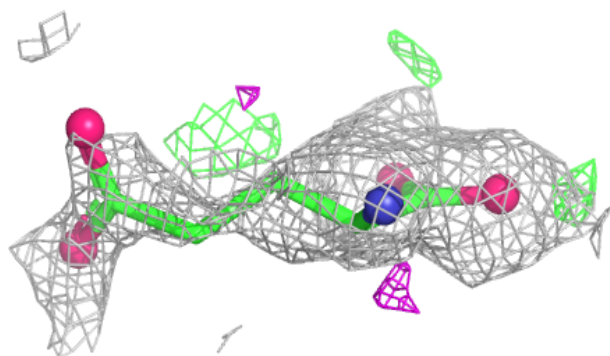
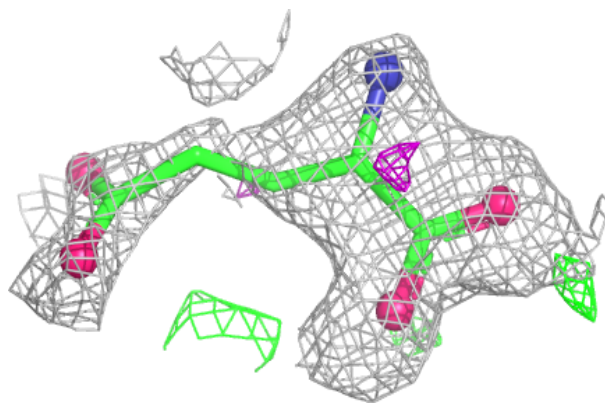
The following is a graphical depiction of the model fit to experimental electron density of all instances of the Ligand of Interest. In addition, ligands with molecular weight > 250 and outliers as shown on the geometry validation Tables will also be included. Each fit is shown from different orientation to approximate a three-dimensional view.



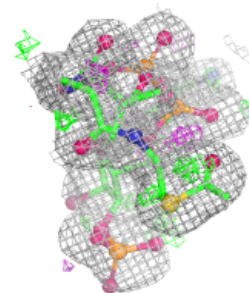
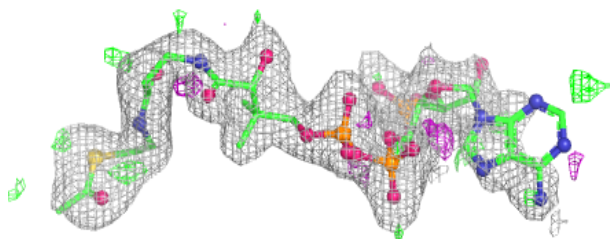
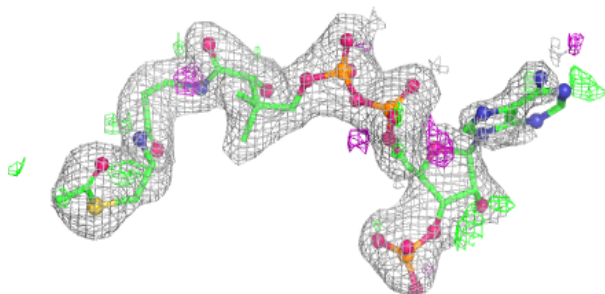


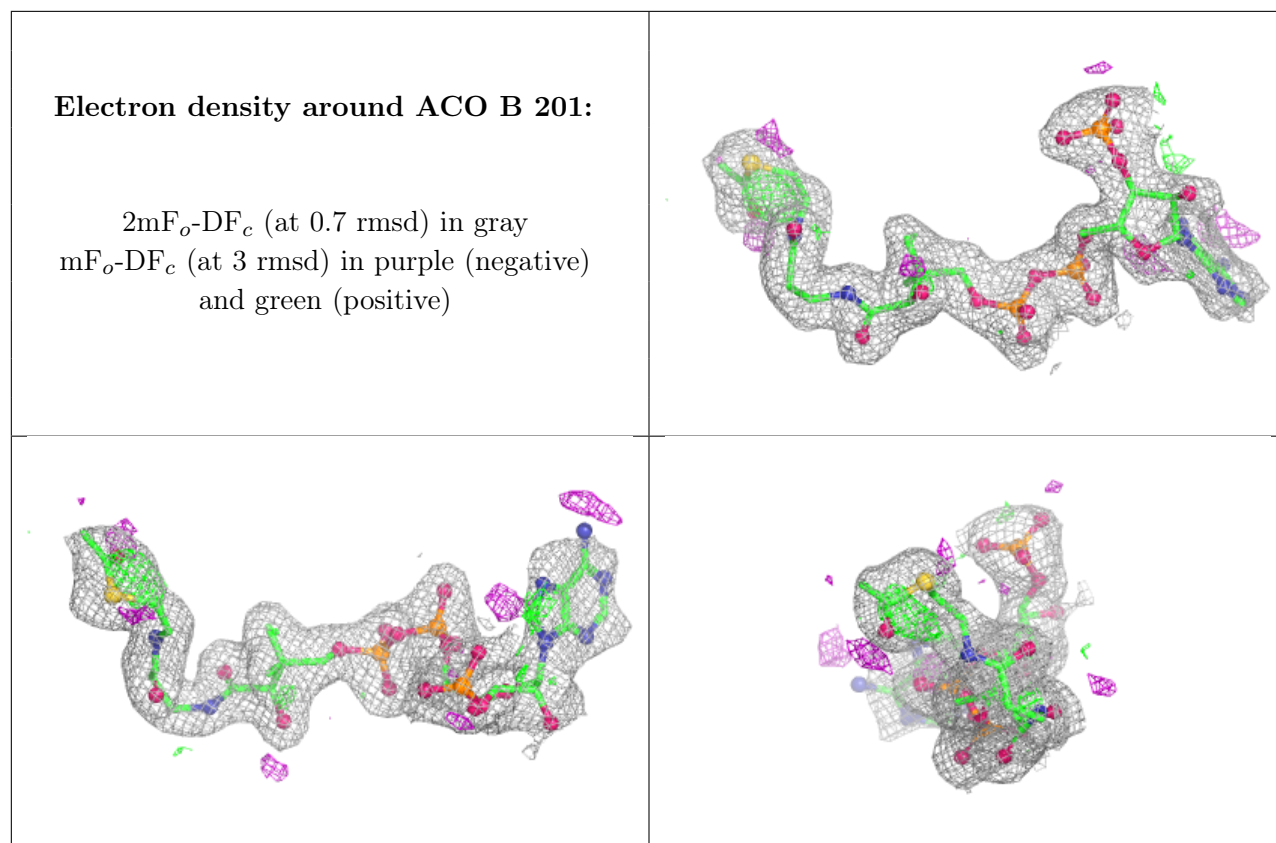
**Electron density around GLU B 202:**

$2mF_o-DF_c$  (at 0.7 rmsd) in gray  
 $mF_o-DF_c$  (at 3 rmsd) in purple (negative)  
and green (positive)

**Electron density around ACO A 201:**

$2mF_o-DF_c$  (at 0.7 rmsd) in gray  
 $mF_o-DF_c$  (at 3 rmsd) in purple (negative)  
and green (positive)





## 6.5 Other polymers [i](#)

There are no such residues in this entry.