



Full wwPDB X-ray Structure Validation Report ⓘ

Mar 4, 2026 – 11:49 PM UTC

PDB ID : 6FQH / pdb_00006fqh
Title : GluA2(flop) S729C ligand binding core dimer bound to NBQX at 1.76 Angstrom resolution
Authors : Coombs, I.D.; Soto, D.; Gold, M.G.; Farrant, M.F.; Cull-Candy, S.G.
Deposited on : 2018-02-14
Resolution : 1.76 Å(reported)

This is a Full wwPDB X-ray Structure Validation Report for a publicly released PDB entry.

We welcome your comments at validation@mail.wwpdb.org

A user guide is available at

<https://www.wwpdb.org/validation/2017/XrayValidationReportHelp>

with specific help available everywhere you see the ⓘ symbol.

The types of validation reports are described at

<http://www.wwpdb.org/validation/2017/FAQs#types>.

The following versions of software and data (see [references ⓘ](#)) were used in the production of this report:

MolProbity	:	4-5-2 with Phenix2.0
Mogul	:	2022.3.0, CSD as543be (2022)
Xtriage (Phenix)	:	2.0
EDS	:	3.0
Buster-report	:	wwPDB partial adaption of 1.1.7 (2018)
Percentile statistics	:	20250101.v01 (using entries in the PDB archive January 1st 2025)
CCP4	:	9.0.010 (Gargrove)
Density-Fitness	:	1.0.12
Ideal geometry (proteins)	:	Engh & Huber (2001)
Ideal geometry (DNA, RNA)	:	Parkinson et al. (1996)
Validation Pipeline (wwPDB-VP)	:	2.49

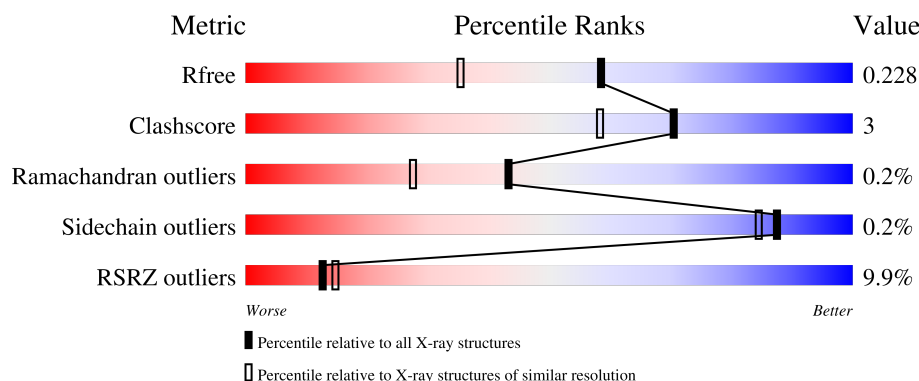
1 Overall quality at a glance

The following experimental techniques were used to determine the structure:

X-RAY DIFFRACTION

The reported resolution of this entry is 1.76 Å.

Percentile scores (ranging between 0-100) for global validation metrics of the entry are shown in the following graphic. The table shows the number of entries on which the scores are based.



Metric	Whole archive (#Entries)	Similar resolution (#Entries, resolution range(Å))
R_{free}	180053	3183 (1.76-1.76)
Clashscore	190562	3299 (1.76-1.76)
Ramachandran outliers	187476	3274 (1.76-1.76)
Sidechain outliers	187428	3274 (1.76-1.76)
RSRZ outliers	180081	3183 (1.76-1.76)

The table below summarises the geometric issues observed across the polymeric chains and their fit to the electron density. The red, orange, yellow and green segments of the lower bar indicate the fraction of residues that contain outliers for ≥ 3 , 2, 1 and 0 types of geometric quality criteria respectively. A grey segment represents the fraction of residues that are not modelled. The numeric value for each fraction is indicated below the corresponding segment, with a dot representing fractions $\leq 5\%$. The upper red bar (where present) indicates the fraction of residues that have poor fit to the electron density. The numeric value is given above the bar.

Mol	Chain	Length	Quality of chain
1	A	276	<div> <div>9%</div> <div>88%</div> <div>5%</div> <div>6%</div> </div>
1	B	276	<div> <div>10%</div> <div>88%</div> <div>5%</div> <div>7%</div> </div>

The following table lists non-polymeric compounds, carbohydrate monomers and non-standard residues in protein, DNA, RNA chains that are outliers for geometric or electron-density-fit criteria:

Mol	Type	Chain	Res	Chirality	Geometry	Clashes	Electron density
2	E2Q	A	301	-	X	-	-
2	E2Q	B	301	-	X	-	-

2 Entry composition [i](#)

There are 3 unique types of molecules in this entry. The entry contains 8616 atoms, of which 4085 are hydrogens and 0 are deuteriums.

In the tables below, the ZeroOcc column contains the number of atoms modelled with zero occupancy, the AltConf column contains the number of residues with at least one atom in alternate conformation and the Trace column contains the number of residues modelled with at most 2 atoms.

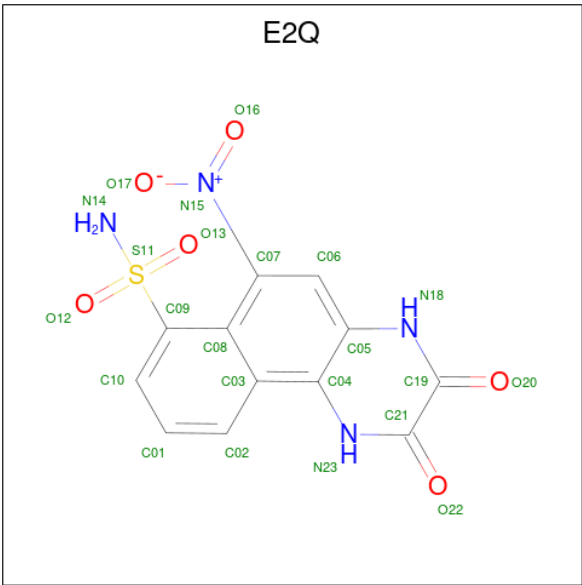
- Molecule 1 is a protein called Glutamate receptor 2, Glutamate receptor 2.

Mol	Chain	Residues	Atoms						ZeroOcc	AltConf	Trace
1	A	259	Total	C	H	N	O	S	0	0	0
			4043	1281	2030	335	382	15			
1	B	258	Total	C	H	N	O	S	0	0	0
			4053	1283	2039	335	381	15			

There are 22 discrepancies between the modelled and reference sequences:

Chain	Residue	Modelled	Actual	Comment	Reference
A	-11	GLY	-	expression tag	UNP P19491
A	-10	SER	THR	conflict	UNP P19491
A	-9	ALA	GLU	conflict	UNP P19491
A	-8	MET	LEU	conflict	UNP P19491
A	-7	GLY	PRO	conflict	UNP P19491
A	0	ARG	GLY	conflict	UNP P19491
A	1	GLY	LEU	conflict	UNP P19491
A	2	ALA	GLU	conflict	UNP P19491
A	118	GLY	-	linker	UNP P19491
A	119	THR	-	linker	UNP P19491
A	217	CYS	SER	conflict	UNP P19491
B	-11	GLY	-	expression tag	UNP P19491
B	-10	SER	THR	conflict	UNP P19491
B	-9	ALA	GLU	conflict	UNP P19491
B	-8	MET	LEU	conflict	UNP P19491
B	-7	GLY	PRO	conflict	UNP P19491
B	0	ARG	GLY	conflict	UNP P19491
B	1	GLY	LEU	conflict	UNP P19491
B	2	ALA	GLU	conflict	UNP P19491
B	118	GLY	-	linker	UNP P19491
B	119	THR	-	linker	UNP P19491
B	217	CYS	SER	conflict	UNP P19491

- Molecule 2 is 6-nitro-2,3-bis(oxidanylidene)-1,4-dihydrobenzo[f]quinoxaline-7-sulfonamide (CCD ID: E2Q) (formula: C₁₂H₈N₄O₆S).



Mol	Chain	Residues	Atoms						ZeroOcc	AltConf
2	A	1	Total	C	H	N	O	S	0	0
			31	12	8	4	6	1		
2	B	1	Total	C	H	N	O	S	0	0
			31	12	8	4	6	1		

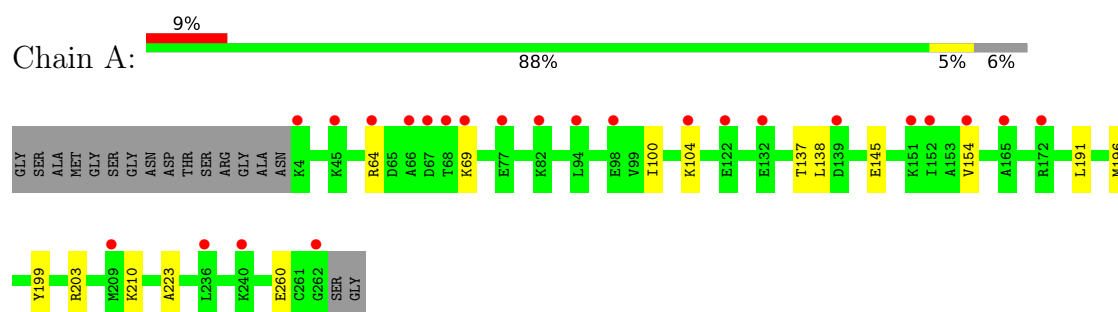
- Molecule 3 is water.

Mol	Chain	Residues	Atoms		ZeroOcc	AltConf
3	A	249	Total	O	0	0
			249	249		
3	B	209	Total	O	0	0
			209	209		

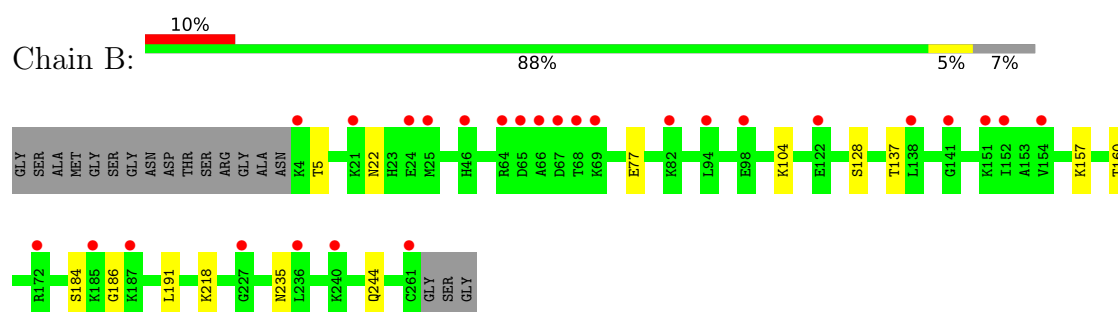
3 Residue-property plots [i](#)

These plots are drawn for all protein, RNA, DNA and oligosaccharide chains in the entry. The first graphic for a chain summarises the proportions of the various outlier classes displayed in the second graphic. The second graphic shows the sequence view annotated by issues in geometry and electron density. Residues are color-coded according to the number of geometric quality criteria for which they contain at least one outlier: green = 0, yellow = 1, orange = 2 and red = 3 or more. A red dot above a residue indicates a poor fit to the electron density ($RSRZ > 2$). Stretches of 2 or more consecutive residues without any outlier are shown as a green connector. Residues present in the sample, but not in the model, are shown in grey.

- Molecule 1: Glutamate receptor 2, Glutamate receptor 2



- Molecule 1: Glutamate receptor 2, Glutamate receptor 2



4 Data and refinement statistics

Property	Value	Source
Space group	P 61	Depositor
Cell constants a, b, c, α , β , γ	108.11Å 108.11Å 99.08Å 90.00° 90.00° 120.00°	Depositor
Resolution (Å)	54.05 – 1.76 54.05 – 1.76	Depositor EDS
% Data completeness (in resolution range)	99.3 (54.05-1.76) 99.5 (54.05-1.76)	Depositor EDS
R_{merge}	(Not available)	Depositor
R_{sym}	(Not available)	Depositor
$\langle I/\sigma(I) \rangle$ ¹	1.49 (at 1.76Å)	Xtriage
Refinement program	PHENIX 1.11.1_2575	Depositor
R, R_{free}	0.189 , 0.224 0.196 , 0.228	Depositor DCC
R_{free} test set	3260 reflections (5.00%)	wwPDB-VP
Wilson B-factor (Å ²)	31.9	Xtriage
Anisotropy	0.094	Xtriage
Bulk solvent k_{sol} (e/Å ³), B_{sol} (Å ²)	0.38 , 52.7	EDS
L-test for twinning ²	$\langle L \rangle = 0.50$, $\langle L^2 \rangle = 0.34$	Xtriage
Estimated twinning fraction	0.042 for h,-h-k,-l	Xtriage
F_o, F_c correlation	0.97	EDS
Total number of atoms	8616	wwPDB-VP
Average B, all atoms (Å ²)	56.0	wwPDB-VP

Xtriage's analysis on translational NCS is as follows: *The largest off-origin peak in the Patterson function is 4.50% of the height of the origin peak. No significant pseudotranslation is detected.*

¹Intensities estimated from amplitudes.

²Theoretical values of $\langle |L| \rangle$, $\langle L^2 \rangle$ for acentric reflections are 0.5, 0.333 respectively for untwinned datasets, and 0.375, 0.2 for perfectly twinned datasets.

5 Model quality [i](#)

5.1 Standard geometry [i](#)

Bond lengths and bond angles in the following residue types are not validated in this section: E2Q

The Z score for a bond length (or angle) is the number of standard deviations the observed value is removed from the expected value. A bond length (or angle) with $|Z| > 5$ is considered an outlier worth inspection. RMSZ is the root-mean-square of all Z scores of the bond lengths (or angles).

Mol	Chain	Bond lengths		Bond angles	
		RMSZ	$\# Z > 5$	RMSZ	$\# Z > 5$
1	A	0.53	0/2049	0.62	0/2757
1	B	0.45	0/2050	0.59	0/2758
All	All	0.49	0/4099	0.60	0/5515

There are no bond length outliers.

There are no bond angle outliers.

There are no chirality outliers.

There are no planarity outliers.

5.2 Too-close contacts [i](#)

In the following table, the Non-H and H(model) columns list the number of non-hydrogen atoms and hydrogen atoms in the chain respectively. The H(added) column lists the number of hydrogen atoms added and optimized by MolProbity. The Clashes column lists the number of clashes within the asymmetric unit, whereas Symm-Clashes lists symmetry-related clashes.

Mol	Chain	Non-H	H(model)	H(added)	Clashes	Symm-Clashes
1	A	2013	2030	2029	14	0
1	B	2014	2039	2038	10	0
2	A	23	8	0	3	0
2	B	23	8	0	2	0
3	A	249	0	0	10	2
3	B	209	0	0	6	2
All	All	4531	4085	4067	28	2

The all-atom clashscore is defined as the number of clashes found per 1000 atoms (including hydrogen atoms). The all-atom clashscore for this structure is 3.

All (28) close contacts within the same asymmetric unit are listed below, sorted by their clash

magnitude.

Atom-1	Atom-2	Interatomic distance (Å)	Clash overlap (Å)
1:B:160:THR:OG1	3:B:401:HOH:O	1.84	0.93
1:A:64:ARG:NE	3:A:402:HOH:O	2.03	0.86
1:A:145:GLU:OE1	3:A:401:HOH:O	1.95	0.83
1:A:199:TYR:OH	3:A:403:HOH:O	2.08	0.71
1:A:64:ARG:NH2	3:A:402:HOH:O	2.22	0.70
1:A:260:GLU:OE2	3:A:405:HOH:O	2.13	0.66
1:A:64:ARG:CZ	3:A:402:HOH:O	2.41	0.66
1:B:186:GLY:O	3:B:402:HOH:O	2.14	0.65
1:B:77:GLU:OE1	3:B:403:HOH:O	2.14	0.64
1:A:154:VAL:HG23	3:A:541:HOH:O	2.03	0.58
1:A:137:THR:HG22	1:A:191:LEU:HB2	1.90	0.54
2:B:301:E2Q:N15	2:B:301:E2Q:O12	2.42	0.53
2:A:301:E2Q:O13	2:A:301:E2Q:O17	2.27	0.53
1:B:184:SER:HB2	3:B:410:HOH:O	2.09	0.52
1:B:137:THR:HG22	1:B:191:LEU:HB2	1.94	0.47
1:A:196:MET:HE3	2:A:301:E2Q:N14	2.28	0.47
1:B:22:ASN:OD1	1:B:22:ASN:N	2.48	0.46
1:B:128:SER:O	1:B:157:LYS:HE3	2.15	0.46
2:A:301:E2Q:O13	2:A:301:E2Q:N15	2.48	0.46
1:A:64:ARG:NH1	1:A:69:LYS:O	2.49	0.45
1:A:210:LYS:HE3	3:A:477:HOH:O	2.18	0.44
1:B:104:LYS:HG2	1:B:235:ASN:OD1	2.17	0.44
1:A:104:LYS:NZ	3:A:420:HOH:O	2.52	0.42
1:A:203:ARG:CD	3:A:404:HOH:O	2.67	0.42
1:B:218:LYS:HE3	3:B:417:HOH:O	2.21	0.41
1:A:100:ILE:HD12	1:A:223:ALA:HB1	2.02	0.41
1:B:244:GLN:NE2	3:B:407:HOH:O	2.34	0.41
2:B:301:E2Q:O12	2:B:301:E2Q:O17	2.39	0.40

All (2) symmetry-related close contacts are listed below. The label for Atom-2 includes the symmetry operator and encoded unit-cell translations to be applied.

Atom-1	Atom-2	Interatomic distance (Å)	Clash overlap (Å)
3:A:613:HOH:O	3:B:598:HOH:O[3_564]	2.12	0.08
3:A:577:HOH:O	3:B:601:HOH:O[3_564]	2.15	0.05

5.3 Torsion angles [i](#)

5.3.1 Protein backbone [i](#)

In the following table, the Percentiles column shows the percent Ramachandran outliers of the chain as a percentile score with respect to all X-ray entries followed by that with respect to entries of similar resolution.

The Analysed column shows the number of residues for which the backbone conformation was analysed, and the total number of residues.

Mol	Chain	Analysed	Favoured	Allowed	Outliers	Percentiles	
1	A	257/276 (93%)	253 (98%)	4 (2%)	0	100	100
1	B	256/276 (93%)	252 (98%)	3 (1%)	1 (0%)	30	15
All	All	513/552 (93%)	505 (98%)	7 (1%)	1 (0%)	43	27

All (1) Ramachandran outliers are listed below:

Mol	Chain	Res	Type
1	B	5	THR

5.3.2 Protein sidechains [i](#)

In the following table, the Percentiles column shows the percent sidechain outliers of the chain as a percentile score with respect to all X-ray entries followed by that with respect to entries of similar resolution.

The Analysed column shows the number of residues for which the sidechain conformation was analysed, and the total number of residues.

Mol	Chain	Analysed	Rotameric	Outliers	Percentiles	
1	A	215/227 (95%)	214 (100%)	1 (0%)	81	75
1	B	216/227 (95%)	216 (100%)	0	100	100
All	All	431/454 (95%)	430 (100%)	1 (0%)	87	84

All (1) residues with a non-rotameric sidechain are listed below:

Mol	Chain	Res	Type
1	A	138	LEU

Sometimes sidechains can be flipped to improve hydrogen bonding and reduce clashes. All (1) such sidechains are listed below:

Mol	Chain	Res	Type
1	B	46	HIS

5.3.3 RNA [i](#)

There are no RNA molecules in this entry.

5.4 Non-standard residues in protein, DNA, RNA chains [i](#)

There are no non-standard protein/DNA/RNA residues in this entry.

5.5 Carbohydrates [i](#)

There are no oligosaccharides in this entry.

5.6 Ligand geometry [i](#)

2 ligands are modelled in this entry.

In the following table, the Counts columns list the number of bonds (or angles) for which Mogul statistics could be retrieved, the number of bonds (or angles) that are observed in the model and the number of bonds (or angles) that are defined in the Chemical Component Dictionary. The Link column lists molecule types, if any, to which the group is linked. The Z score for a bond length (or angle) is the number of standard deviations the observed value is removed from the expected value. A bond length (or angle) with $|Z| > 2$ is considered an outlier worth inspection. RMSZ is the root-mean-square of all Z scores of the bond lengths (or angles).

Mol	Type	Chain	Res	Link	Bond lengths			Bond angles		
					Counts	RMSZ	# $ Z > 2$	Counts	RMSZ	# $ Z > 2$
2	E2Q	A	301	-	25,25,25	3.01	12 (48%)	32,39,39	4.33	18 (56%)
2	E2Q	B	301	-	25,25,25	3.46	12 (48%)	32,39,39	3.23	16 (50%)

In the following table, the Chirals column lists the number of chiral outliers, the number of chiral centers analysed, the number of these observed in the model and the number defined in the Chemical Component Dictionary. Similar counts are reported in the Torsion and Rings columns. '-' means no outliers of that kind were identified.

Mol	Type	Chain	Res	Link	Chirals	Torsions	Rings
2	E2Q	A	301	-	-	6/8/10/10	0/3/3/3
2	E2Q	B	301	-	-	6/8/10/10	0/3/3/3

All (24) bond length outliers are listed below:

Mol	Chain	Res	Type	Atoms	Z	Observed(Å)	Ideal(Å)
2	B	301	E2Q	S11-N14	6.42	1.72	1.60
2	B	301	E2Q	C21-N23	6.39	1.44	1.35
2	B	301	E2Q	C05-N18	6.32	1.50	1.39
2	A	301	E2Q	O16-N15	-5.54	1.13	1.22
2	B	301	E2Q	O12-S11	5.43	1.53	1.43
2	B	301	E2Q	O13-S11	5.33	1.53	1.43
2	A	301	E2Q	O12-S11	5.31	1.53	1.43
2	A	301	E2Q	S11-N14	5.31	1.70	1.60
2	B	301	E2Q	C07-C08	4.89	1.50	1.43
2	A	301	E2Q	C07-C08	4.87	1.50	1.43
2	B	301	E2Q	C04-N23	4.72	1.49	1.39
2	A	301	E2Q	O20-C19	-4.69	1.14	1.23
2	A	301	E2Q	C21-N23	4.59	1.42	1.35
2	B	301	E2Q	C19-N18	4.58	1.42	1.35
2	B	301	E2Q	O16-N15	-4.54	1.15	1.22
2	A	301	E2Q	O13-S11	3.77	1.50	1.43
2	A	301	E2Q	C04-N23	3.43	1.46	1.39
2	B	301	E2Q	O20-C19	-3.31	1.17	1.23
2	A	301	E2Q	C05-N18	2.82	1.44	1.39
2	A	301	E2Q	O22-C21	-2.80	1.18	1.23
2	A	301	E2Q	C01-C10	2.79	1.43	1.38
2	A	301	E2Q	C19-N18	2.69	1.39	1.35
2	B	301	E2Q	C03-C08	-2.48	1.38	1.42
2	B	301	E2Q	C01-C10	2.18	1.42	1.38

All (34) bond angle outliers are listed below:

Mol	Chain	Res	Type	Atoms	Z	Observed(°)	Ideal(°)
2	A	301	E2Q	O13-S11-O12	-16.16	93.95	118.80
2	A	301	E2Q	O13-S11-N14	9.51	121.07	107.35
2	B	301	E2Q	O13-S11-C09	7.53	118.18	107.26
2	B	301	E2Q	O13-S11-N14	7.22	117.76	107.35
2	A	301	E2Q	C09-S11-N14	7.00	120.83	108.28
2	B	301	E2Q	O13-S11-O12	-6.60	108.65	118.80
2	B	301	E2Q	O12-S11-N14	-6.12	98.54	107.35
2	A	301	E2Q	C21-C19-N18	5.00	120.31	116.82
2	B	301	E2Q	C21-C19-N18	4.83	120.20	116.82
2	A	301	E2Q	O12-S11-N14	4.54	113.90	107.35
2	A	301	E2Q	O13-S11-C09	-4.42	100.84	107.26
2	A	301	E2Q	C02-C03-C04	-4.18	117.18	124.70
2	B	301	E2Q	C02-C03-C04	-4.09	117.34	124.70
2	A	301	E2Q	O12-S11-C09	-3.96	101.52	107.26

Continued on next page...

Continued from previous page...

Mol	Chain	Res	Type	Atoms	Z	Observed(°)	Ideal(°)
2	B	301	E2Q	C05-N18-C19	-3.82	119.48	124.82
2	A	301	E2Q	O20-C19-C21	3.57	122.79	119.62
2	B	301	E2Q	C19-C21-N23	3.48	119.25	116.82
2	A	301	E2Q	C05-N18-C19	-3.46	119.97	124.82
2	B	301	E2Q	O22-C21-C19	3.42	122.65	119.62
2	A	301	E2Q	C02-C03-C08	3.21	123.38	118.19
2	B	301	E2Q	C02-C03-C08	2.99	123.03	118.19
2	A	301	E2Q	C19-C21-N23	2.87	118.83	116.82
2	A	301	E2Q	C04-C05-N18	2.82	121.29	118.59
2	B	301	E2Q	O20-C19-C21	2.69	122.01	119.62
2	A	301	E2Q	C06-C05-C04	2.62	122.13	117.92
2	A	301	E2Q	O22-C21-C19	2.60	121.92	119.62
2	A	301	E2Q	O20-C19-N18	-2.57	116.88	121.61
2	A	301	E2Q	C01-C02-C03	-2.29	117.83	120.91
2	B	301	E2Q	C04-N23-C21	-2.24	119.62	124.80
2	B	301	E2Q	C04-C05-N18	2.20	120.69	118.59
2	A	301	E2Q	C01-C10-C09	2.19	122.80	120.37
2	B	301	E2Q	C09-S11-N14	-2.16	104.40	108.28
2	B	301	E2Q	C06-C05-C04	2.10	121.30	117.92
2	B	301	E2Q	O20-C19-N18	-2.07	117.79	121.61

There are no chirality outliers.

All (12) torsion outliers are listed below:

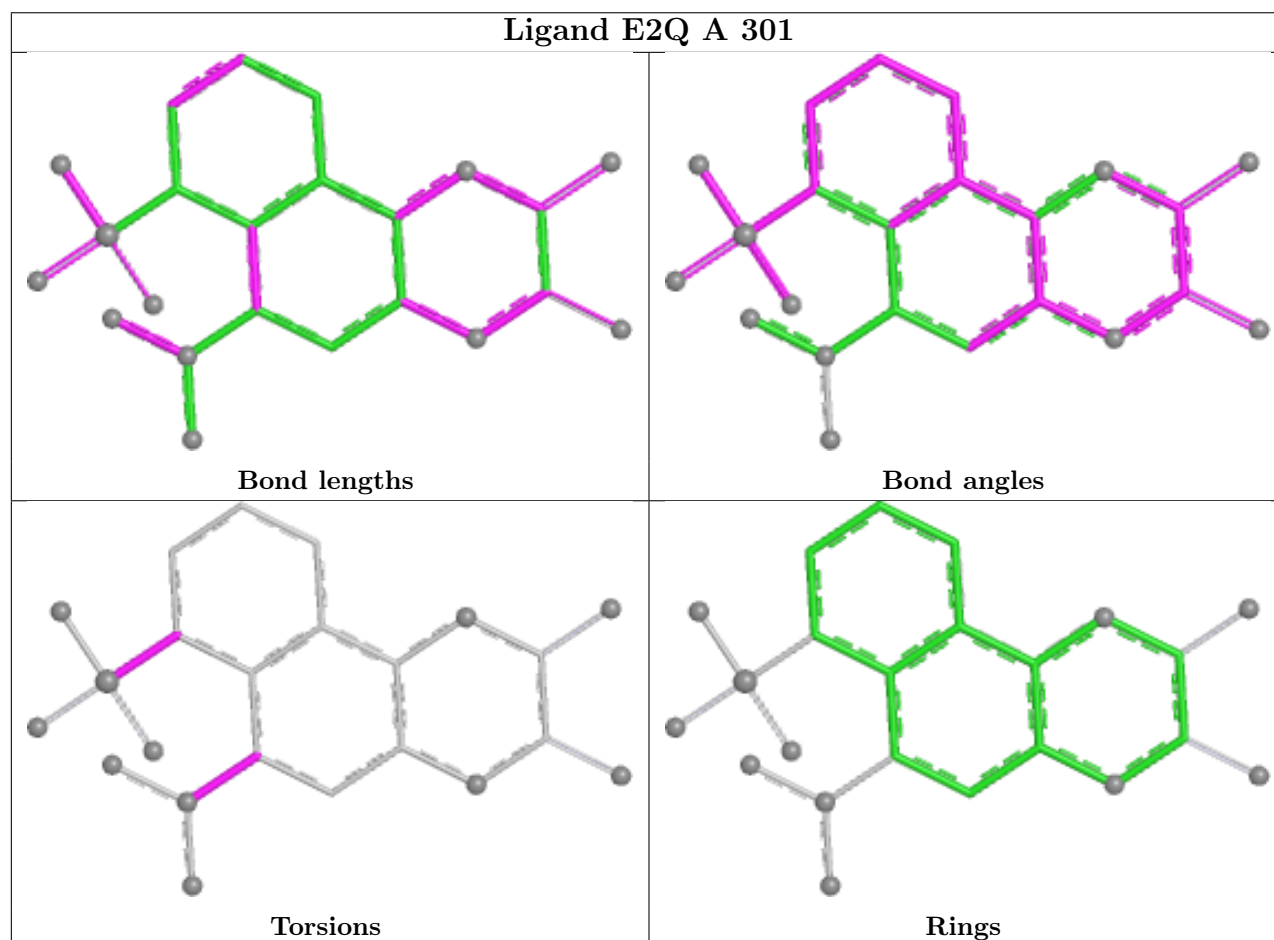
Mol	Chain	Res	Type	Atoms
2	A	301	E2Q	C06-C07-N15-O16
2	A	301	E2Q	C08-C07-N15-O16
2	A	301	E2Q	C08-C09-S11-O12
2	B	301	E2Q	C08-C09-S11-N14
2	B	301	E2Q	C08-C09-S11-O13
2	B	301	E2Q	C10-C09-S11-N14
2	A	301	E2Q	C10-C09-S11-O12
2	A	301	E2Q	C08-C09-S11-N14
2	A	301	E2Q	C10-C09-S11-N14
2	B	301	E2Q	C06-C07-N15-O16
2	B	301	E2Q	C08-C07-N15-O16
2	B	301	E2Q	C10-C09-S11-O13

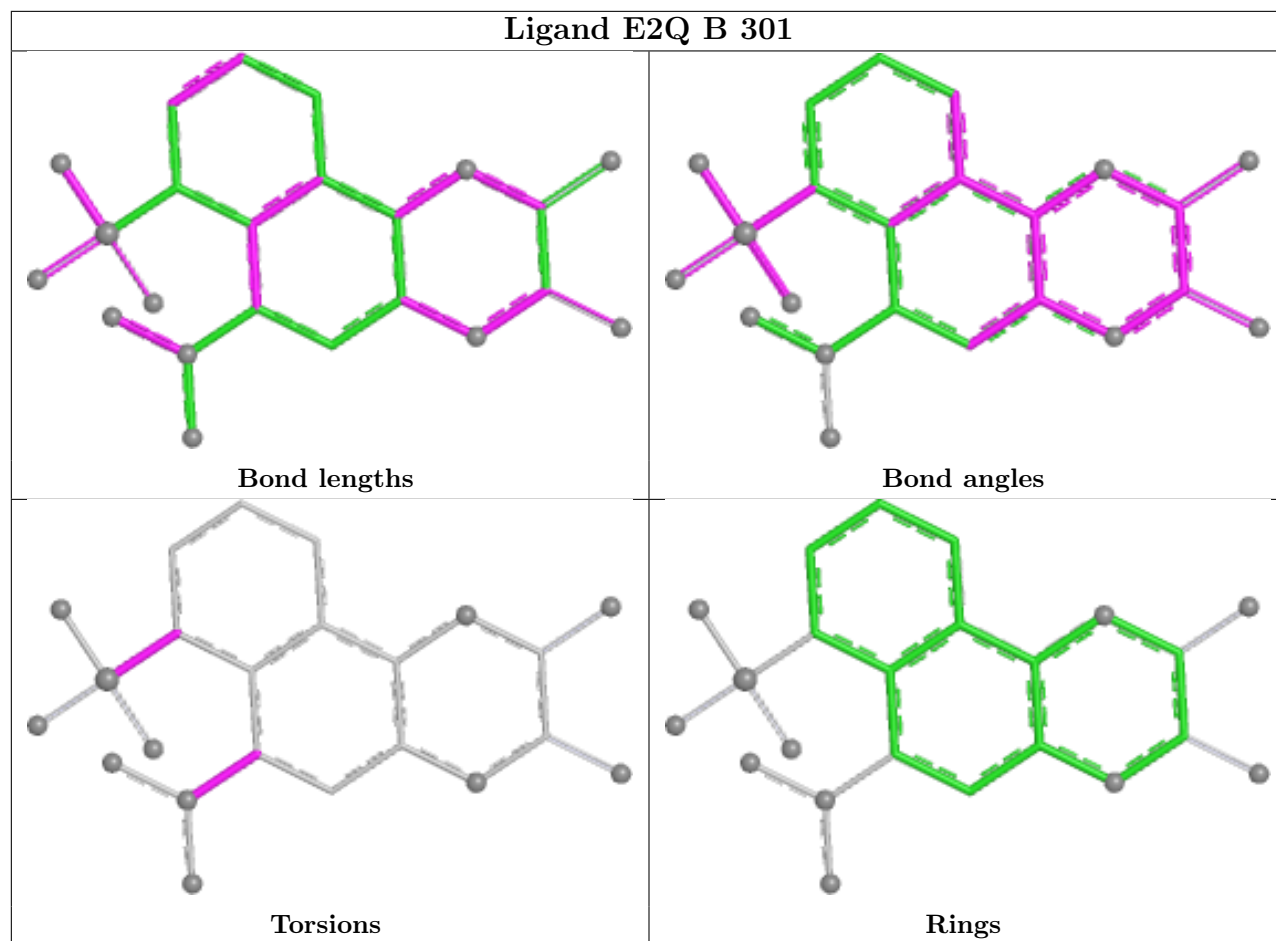
There are no ring outliers.

2 monomers are involved in 5 short contacts:

Mol	Chain	Res	Type	Clashes	Symm-Clashes
2	A	301	E2Q	3	0
2	B	301	E2Q	2	0

The following is a two-dimensional graphical depiction of Mogul quality analysis of bond lengths, bond angles, torsion angles, and ring geometry for all instances of the Ligand of Interest. In addition, ligands with molecular weight > 250 and outliers as shown on the validation Tables will also be included. For torsion angles, if less than 5% of the Mogul distribution of torsion angles is within 10 degrees of the torsion angle in question, then that torsion angle is considered an outlier. Any bond that is central to one or more torsion angles identified as an outlier by Mogul will be highlighted in the graph. For rings, the root-mean-square deviation (RMSD) between the ring in question and similar rings identified by Mogul is calculated over all ring torsion angles. If the average RMSD is greater than 60 degrees and the minimal RMSD between the ring in question and any Mogul-identified rings is also greater than 60 degrees, then that ring is considered an outlier. The outliers are highlighted in purple. The color gray indicates Mogul did not find sufficient equivalents in the CSD to analyse the geometry.





5.7 Other polymers [i](#)

There are no such residues in this entry.

5.8 Polymer linkage issues [i](#)

There are no chain breaks in this entry.

6 Fit of model and data

6.1 Protein, DNA and RNA chains

In the following table, the column labelled ‘#RSRZ> 2’ contains the number (and percentage) of RSRZ outliers, followed by percent RSRZ outliers for the chain as percentile scores relative to all X-ray entries and entries of similar resolution. The OWAB column contains the minimum, median, 95th percentile and maximum values of the occupancy-weighted average B-factor per residue. The column labelled ‘Q< 0.9’ lists the number of (and percentage) of residues with an average occupancy less than 0.9.

Mol	Chain	Analysed	<RSRZ>	#RSRZ>2	OWAB(Å ²)	Q<0.9
1	A	259/276 (93%)	0.30	24 (9%) 14 17	26, 43, 108, 185	0
1	B	258/276 (93%)	0.48	27 (10%) 11 13	28, 50, 115, 196	0
All	All	517/552 (93%)	0.39	51 (9%) 13 15	26, 48, 114, 196	0

All (51) RSRZ outliers are listed below:

Mol	Chain	Res	Type	RSRZ
1	A	262	GLY	6.6
1	B	46	HIS	5.0
1	B	236	LEU	4.7
1	B	187	LYS	4.2
1	B	68	THR	4.2
1	A	77	GLU	3.9
1	A	154	VAL	3.7
1	A	68	THR	3.6
1	A	64	ARG	3.6
1	A	104	LYS	3.6
1	A	45	LYS	3.4
1	B	66	ALA	3.3
1	A	165	ALA	3.2
1	B	141	GLY	3.2
1	A	94	LEU	3.2
1	A	172	ARG	3.2
1	A	82	LYS	3.2
1	A	139	ASP	3.1
1	A	4	LYS	3.0
1	A	240	LYS	3.0
1	A	67	ASP	2.9
1	A	66	ALA	2.9
1	A	122	GLU	2.8
1	B	151	LYS	2.8

Continued on next page...

Continued from previous page...

Mol	Chain	Res	Type	RSRZ
1	B	82	LYS	2.8
1	B	94	LEU	2.8
1	B	240	LYS	2.8
1	B	154	VAL	2.7
1	B	67	ASP	2.7
1	A	69	LYS	2.7
1	B	152	ILE	2.6
1	A	98	GLU	2.5
1	B	21	LYS	2.5
1	B	185	LYS	2.5
1	B	25	MET	2.4
1	A	152	ILE	2.4
1	A	151	LYS	2.4
1	A	236	LEU	2.4
1	B	138	LEU	2.3
1	B	24	GLU	2.3
1	B	98	GLU	2.3
1	B	4	LYS	2.3
1	B	65	ASP	2.3
1	B	172	ARG	2.2
1	B	64	ARG	2.2
1	B	261	CYS	2.2
1	B	122	GLU	2.2
1	B	69	LYS	2.1
1	B	227	GLY	2.1
1	A	209	MET	2.1
1	A	132	GLU	2.1

6.2 Non-standard residues in protein, DNA, RNA chains [i](#)

There are no non-standard protein/DNA/RNA residues in this entry.

6.3 Carbohydrates [i](#)

There are no oligosaccharides in this entry.

6.4 Ligands [i](#)

In the following table, the Atoms column lists the number of modelled atoms in the group and the number defined in the chemical component dictionary. The B-factors column lists the minimum,

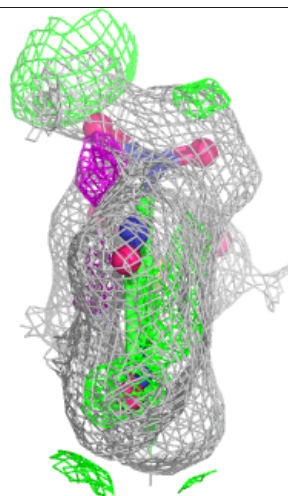
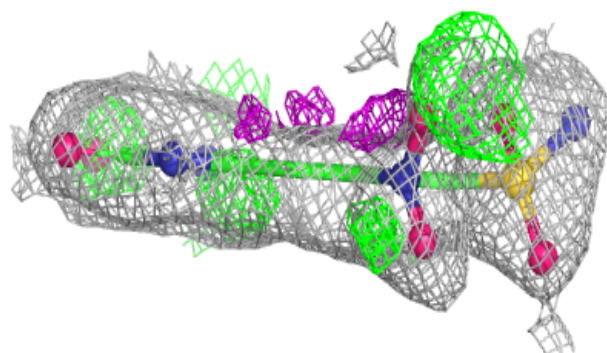
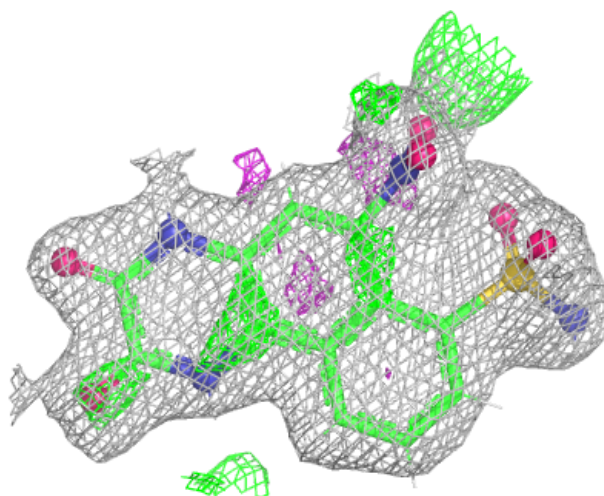
median, 95th percentile and maximum values of B factors of atoms in the group. The column labelled 'Q<0.9' lists the number of atoms with occupancy less than 0.9.

Mol	Type	Chain	Res	Atoms	RSCC	RSR	B-factors(Å ²)	Q<0.9
2	E2Q	B	301	23/23	0.87	0.16	43,60,82,114	0
2	E2Q	A	301	23/23	0.92	0.12	26,37,53,85	0

The following is a graphical depiction of the model fit to experimental electron density of all instances of the Ligand of Interest. In addition, ligands with molecular weight > 250 and outliers as shown on the geometry validation Tables will also be included. Each fit is shown from different orientation to approximate a three-dimensional view.

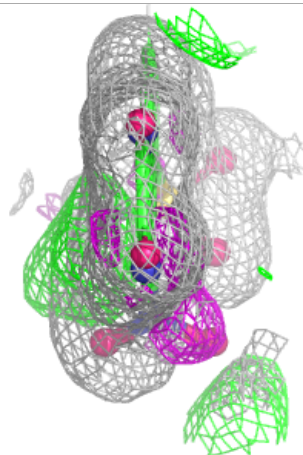
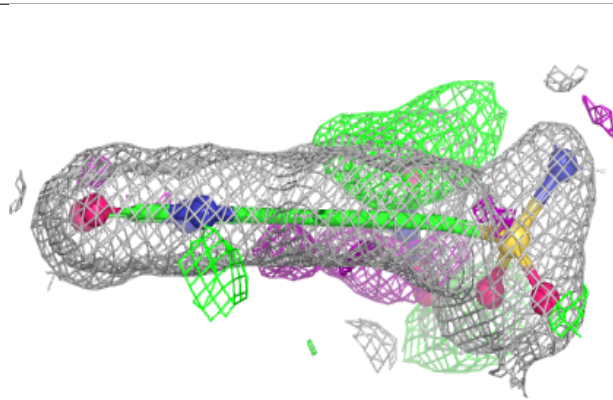
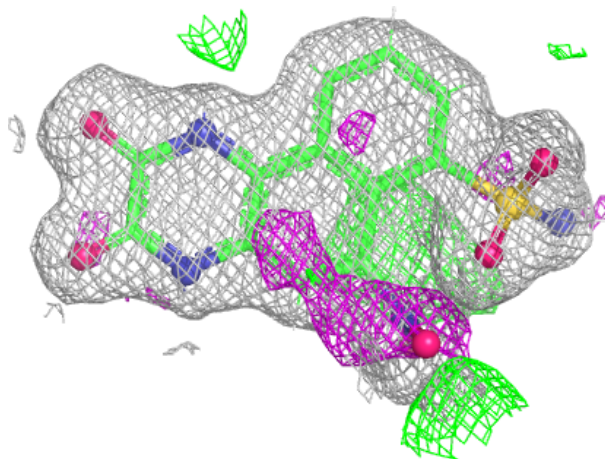
Electron density around E2Q B 301:

2mF_o-DF_c (at 0.7 rmsd) in gray
mF_o-DF_c (at 3 rmsd) in purple (negative)
and green (positive)



Electron density around E2Q A 301:

$2mF_o-DF_c$ (at 0.7 rmsd) in gray
 mF_o-DF_c (at 3 rmsd) in purple (negative)
and green (positive)



6.5 Other polymers [i](#)

There are no such residues in this entry.