



# Full wwPDB X-ray Structure Validation Report ⓘ

Apr 25, 2026 – 01:19 PM EDT

PDB ID : 6HKY / pdb\_00006hky  
Title : Eg5-inhibitor complex  
Authors : Talapatra, S.K.; Kozielski, F.  
Deposited on : 2018-09-09  
Resolution : 2.75 Å(reported)

This is a Full wwPDB X-ray Structure Validation Report for a publicly released PDB entry.

We welcome your comments at [validation@mail.wwpdb.org](mailto:validation@mail.wwpdb.org)

A user guide is available at

<https://www.wwpdb.org/validation/2017/XrayValidationReportHelp>

with specific help available everywhere you see the ⓘ symbol.

The types of validation reports are described at

<http://www.wwpdb.org/validation/2017/FAQs#types>.

---

The following versions of software and data (see [references ⓘ](#)) were used in the production of this report:

MolProbity : 4-5-2 with Phenix2.0  
Mogul : 2022.3.0, CSD as543be (2022)  
Xtriage (Phenix) : 2.0  
EDS : 3.0  
Buster-report : wwPDB partial adaption of 1.1.7 (2018)  
Percentile statistics : 20250101.v01 (using entries in the PDB archive January 1st 2025)  
CCP4 : 9.0.010 (Gargrove)  
Density-Fitness : 1.0.12  
Ideal geometry (proteins) : Engh & Huber (2001)  
Ideal geometry (DNA, RNA) : Parkinson et al. (1996)  
Validation Pipeline (wwPDB-VP) : 2.49

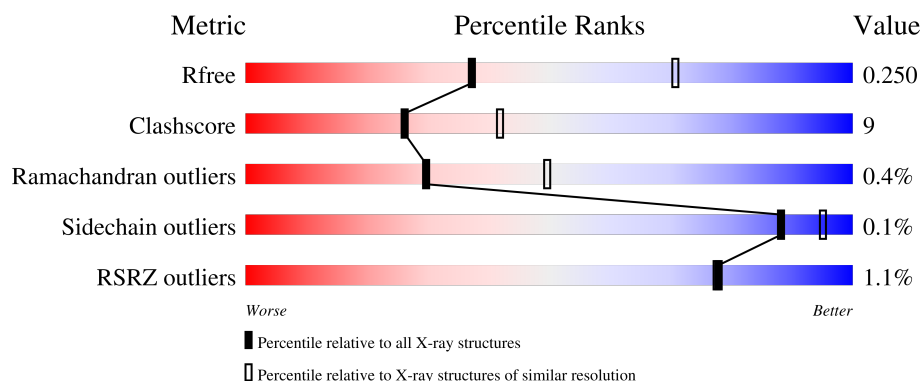
# 1 Overall quality at a glance

The following experimental techniques were used to determine the structure:

*X-RAY DIFFRACTION*

The reported resolution of this entry is 2.75 Å.

Percentile scores (ranging between 0-100) for global validation metrics of the entry are shown in the following graphic. The table shows the number of entries on which the scores are based.



Metric	Whole archive (#Entries)	Similar resolution (#Entries, resolution range(Å))
$R_{free}$	180053	1009 (2.76-2.76)
Clashscore	190562	1044 (2.76-2.76)
Ramachandran outliers	187476	1024 (2.76-2.76)
Sidechain outliers	187428	1024 (2.76-2.76)
RSRZ outliers	180081	1009 (2.76-2.76)

The table below summarises the geometric issues observed across the polymeric chains and their fit to the electron density. The red, orange, yellow and green segments of the lower bar indicate the fraction of residues that contain outliers for  $\geq 3$ , 2, 1 and 0 types of geometric quality criteria respectively. A grey segment represents the fraction of residues that are not modelled. The numeric value for each fraction is indicated below the corresponding segment, with a dot representing fractions  $\leq 5\%$ . The upper red bar (where present) indicates the fraction of residues that have poor fit to the electron density. The numeric value is given above the bar.

Mol	Chain	Length	Quality of chain
1	A	368	<div> <div>%</div> <div> <div></div> <div>75%</div> <div>14%</div> <div>11%</div> </div> </div>
1	B	368	<div> <div>%</div> <div> <div></div> <div>77%</div> <div>11%</div> <div>12%</div> </div> </div>
1	C	368	<div> <div>%</div> <div> <div></div> <div>68%</div> <div>19%</div> <div>• 12%</div> </div> </div>

## 2 Entry composition [i](#)

There are 5 unique types of molecules in this entry. The entry contains 8050 atoms, of which 0 are hydrogens and 0 are deuteriums.

In the tables below, the ZeroOcc column contains the number of atoms modelled with zero occupancy, the AltConf column contains the number of residues with at least one atom in alternate conformation and the Trace column contains the number of residues modelled with at most 2 atoms.

- Molecule 1 is a protein called Kinesin-like protein KIF11.

Mol	Chain	Residues	Atoms					ZeroOcc	AltConf	Trace
1	A	328	Total	C	N	O	S	0	1	0
			2555	1602	448	495	10			
1	B	325	Total	C	N	O	S	0	3	0
			2545	1597	443	495	10			
1	C	324	Total	C	N	O	S	0	2	0
			2524	1583	431	500	10			

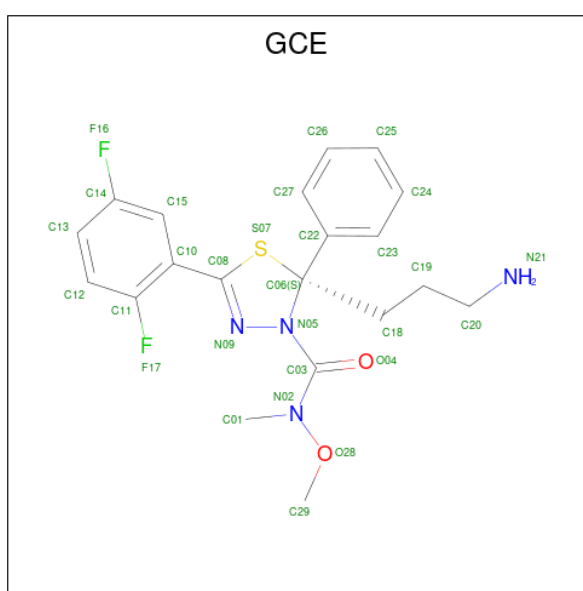
- Molecule 2 is ADENOSINE-5'-DIPHOSPHATE (CCD ID: ADP) (formula:  $C_{10}H_{15}N_5O_{10}P_2$ ).



- Molecule 3 is MAGNESIUM ION (CCD ID: MG) (formula: Mg).

Mol	Chain	Residues	Atoms		ZeroOcc	AltConf
3	A	1	Total	Mg	0	0
			1	1		
3	B	1	Total	Mg	0	0
			1	1		
3	C	1	Total	Mg	0	0
			1	1		

- Molecule 4 is (2 {S})-2-(3-azanylpropyl)-5-[2,5-bis(fluoranyl)phenyl]- {N}-methoxy- {N}-methyl-2-phenyl-1,3,4-thiadiazole-3-carboxamide (CCD ID: GCE) (formula: C<sub>20</sub>H<sub>22</sub>F<sub>2</sub>N<sub>4</sub>O<sub>2</sub>S).



Mol	Chain	Residues	Atoms						ZeroOcc	AltConf
4	A	1	Total	C	F	N	O	S	0	0
			29	20	2	4	2	1		
4	B	1	Total	C	F	N	O	S	0	0
			29	20	2	4	2	1		
4	C	1	Total	C	F	N	O	S	0	0
			29	20	2	4	2	1		

- Molecule 5 is water.

Mol	Chain	Residues	Atoms		ZeroOcc	AltConf
5	A	100	Total	O	0	0
			100	100		
5	B	87	Total	O	0	0
			87	87		

*Continued on next page...*

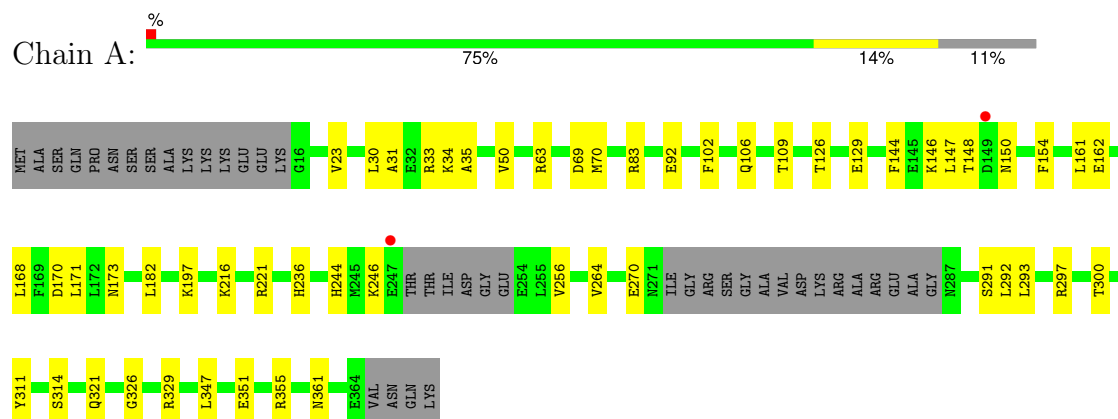
*Continued from previous page...*

Mol	Chain	Residues	Atoms		ZeroOcc	AltConf
5	C	68	Total	O	0	0
			68	68		

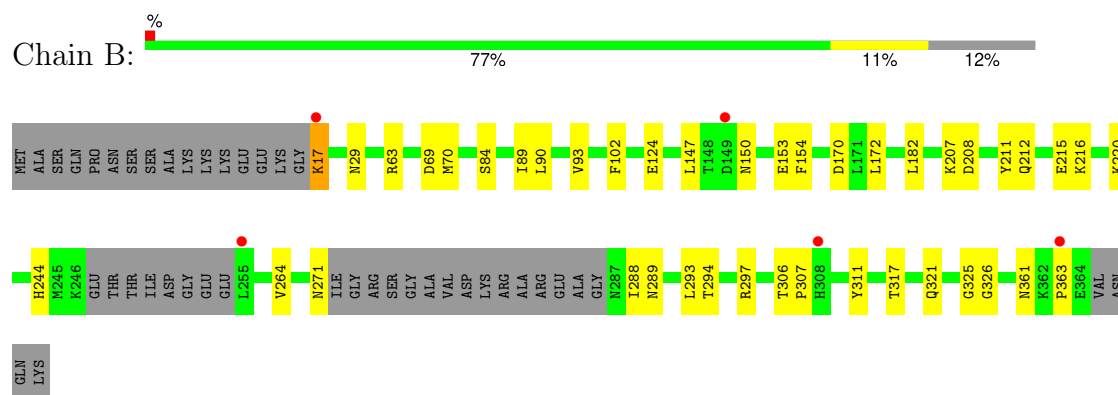
### 3 Residue-property plots [i](#)

These plots are drawn for all protein, RNA, DNA and oligosaccharide chains in the entry. The first graphic for a chain summarises the proportions of the various outlier classes displayed in the second graphic. The second graphic shows the sequence view annotated by issues in geometry and electron density. Residues are color-coded according to the number of geometric quality criteria for which they contain at least one outlier: green = 0, yellow = 1, orange = 2 and red = 3 or more. A red dot above a residue indicates a poor fit to the electron density ( $RSRZ > 2$ ). Stretches of 2 or more consecutive residues without any outlier are shown as a green connector. Residues present in the sample, but not in the model, are shown in grey.

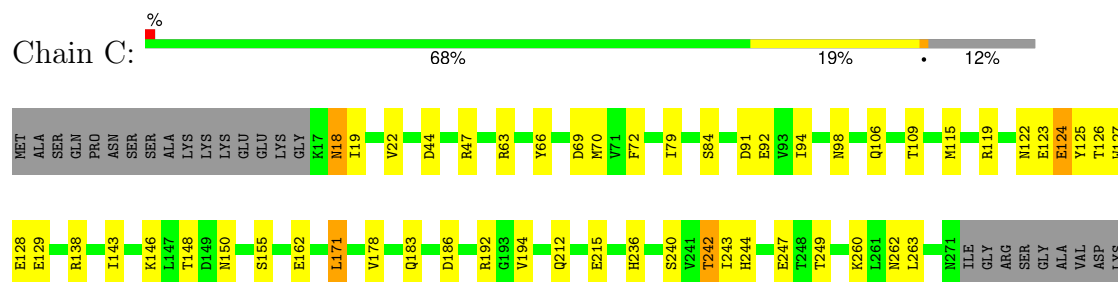
#### • Molecule 1: Kinesin-like protein KIF11

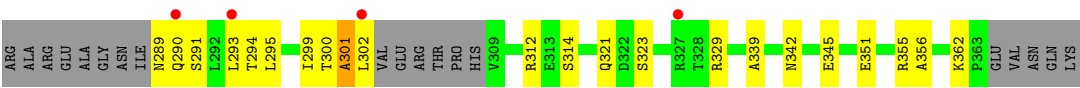


#### • Molecule 1: Kinesin-like protein KIF11



#### • Molecule 1: Kinesin-like protein KIF11





## 4 Data and refinement statistics

Property	Value	Source
Space group	P 32	Depositor
Cell constants a, b, c, $\alpha$ , $\beta$ , $\gamma$	95.81Å 95.81Å 125.95Å 90.00° 90.00° 120.00°	Depositor
Resolution (Å)	47.91 – 2.75 47.91 – 2.75	Depositor EDS
% Data completeness (in resolution range)	100.0 (47.91-2.75) 99.9 (47.91-2.75)	Depositor EDS
$R_{merge}$	0.15	Depositor
$R_{sym}$	(Not available)	Depositor
$\langle I/\sigma(I) \rangle$ <sup>1</sup>	1.90 (at 2.77Å)	Xtriage
Refinement program	PHENIX (1.12_2829: ???)	Depositor
R, $R_{free}$	0.179 , 0.252 0.180 , 0.250	Depositor DCC
$R_{free}$ test set	1689 reflections (5.03%)	wwPDB-VP
Wilson B-factor (Å <sup>2</sup> )	41.0	Xtriage
Anisotropy	0.383	Xtriage
Bulk solvent $k_{sol}$ (e/Å <sup>3</sup> ), $B_{sol}$ (Å <sup>2</sup> )	0.31 , 48.7	EDS
L-test for twinning <sup>2</sup>	$\langle  L  \rangle = 0.49$ , $\langle L^2 \rangle = 0.32$	Xtriage
Estimated twinning fraction	0.009 for -h,-k,l 0.036 for h,-h-k,-l 0.021 for -k,-h,-l	Xtriage
$F_o, F_c$ correlation	0.94	EDS
Total number of atoms	8050	wwPDB-VP
Average B, all atoms (Å <sup>2</sup> )	38.0	wwPDB-VP

Xtriage's analysis on translational NCS is as follows: *The largest off-origin peak in the Patterson function is 3.13% of the height of the origin peak. No significant pseudotranslation is detected.*

<sup>1</sup>Intensities estimated from amplitudes.

<sup>2</sup>Theoretical values of  $\langle |L| \rangle$ ,  $\langle L^2 \rangle$  for acentric reflections are 0.5, 0.333 respectively for untwinned datasets, and 0.375, 0.2 for perfectly twinned datasets.



## 5 Model quality

### 5.1 Standard geometry

Bond lengths and bond angles in the following residue types are not validated in this section: GCE, ADP, MG

The Z score for a bond length (or angle) is the number of standard deviations the observed value is removed from the expected value. A bond length (or angle) with  $|Z| > 5$  is considered an outlier worth inspection. RMSZ is the root-mean-square of all Z scores of the bond lengths (or angles).

Mol	Chain	Bond lengths		Bond angles	
		RMSZ	$\# Z  > 5$	RMSZ	$\# Z  > 5$
1	A	0.52	0/2596	0.76	0/3512
1	B	0.57	0/2593	0.81	5/3510 (0.1%)
1	C	0.54	0/2566	0.84	6/3473 (0.2%)
All	All	0.54	0/7755	0.81	11/10495 (0.1%)

There are no bond length outliers.

All (11) bond angle outliers are listed below:

Mol	Chain	Res	Type	Atoms	Z	Observed(°)	Ideal(°)
1	B	212	GLN	N-CA-CB	7.39	122.66	110.39
1	C	242	THR	OG1-CB-CG2	6.75	122.81	109.30
1	B	17	LYS	CA-C-N	-5.89	112.01	122.74
1	B	17	LYS	C-N-CA	-5.89	112.01	122.74
1	C	63	ARG	CA-CB-CG	5.62	125.34	114.10
1	C	18	ASN	CB-CG-ND2	-5.44	108.23	116.40
1	B	212	GLN	CB-CA-C	-5.42	98.99	110.31
1	C	124	GLU	CB-CA-C	-5.32	99.37	109.95
1	C	171	LEU	CA-CB-CG	-5.30	97.74	116.30
1	B	17	LYS	CD-CE-NZ	5.22	128.62	111.90
1	C	129	GLU	CB-CG-CD	-5.03	104.05	112.60

There are no chirality outliers.

There are no planarity outliers.

### 5.2 Too-close contacts

In the following table, the Non-H and H(model) columns list the number of non-hydrogen atoms and hydrogen atoms in the chain respectively. The H(added) column lists the number of hydrogen

atoms added and optimized by MolProbity. The Clashes column lists the number of clashes within the asymmetric unit, whereas Symm-Clashes lists symmetry-related clashes.

Mol	Chain	Non-H	H(model)	H(added)	Clashes	Symm-Clashes
1	A	2555	0	2561	35	0
1	B	2545	0	2548	39	0
1	C	2524	0	2521	70	0
2	A	27	0	12	0	0
2	B	27	0	12	0	0
2	C	27	0	12	1	0
3	A	1	0	0	0	0
3	B	1	0	0	0	0
3	C	1	0	0	0	0
4	A	29	0	0	0	0
4	B	29	0	0	0	0
4	C	29	0	0	0	0
5	A	100	0	0	3	0
5	B	87	0	0	1	0
5	C	68	0	0	5	0
All	All	8050	0	7666	145	0

The all-atom clashscore is defined as the number of clashes found per 1000 atoms (including hydrogen atoms). The all-atom clashscore for this structure is 9.

All (145) close contacts within the same asymmetric unit are listed below, sorted by their clash magnitude.

Atom-1	Atom-2	Interatomic distance (Å)	Clash overlap (Å)
1:C:162:GLU:HG3	1:C:171:LEU:HD13	1.57	0.87
1:A:126:THR:OG1	1:A:129:GLU:HG2	1.76	0.86
1:C:122:ASN:ND2	1:C:124:GLU:HG3	1.93	0.83
1:C:122:ASN:O	1:C:124:GLU:N	2.19	0.75
1:C:18:ASN:ND2	1:C:329:ARG:NH2	2.33	0.75
1:C:242:THR:HG23	1:C:260:LYS:HG3	1.69	0.75
1:A:162:GLU:HG3	1:A:171:LEU:HD13	1.70	0.74
1:C:122:ASN:ND2	1:C:124:GLU:CG	2.54	0.71
1:B:306:THR:O	5:B:501:HOH:O	2.09	0.70
1:C:92:GLU:OE1	1:C:329:ARG:HG2	1.91	0.70
1:A:270:GLU:O	5:A:501:HOH:O	2.11	0.69
1:A:102:PHE:HB3	1:A:264:VAL:HB	1.75	0.69
1:C:301:ALA:O	1:C:302:LEU:HG	1.92	0.69
1:B:293:LEU:HD11	1:B:297:ARG:CZ	2.23	0.69
1:B:102:PHE:HB3	1:B:264:VAL:HB	1.76	0.67
1:C:192:ARG:HA	1:C:321:GLN:NE2	2.11	0.65

*Continued on next page...*

*Continued from previous page...*

Atom-1	Atom-2	Interatomic distance (Å)	Clash overlap (Å)
1:A:293:LEU:HD21	1:A:297:ARG:NH2	2.12	0.65
1:C:44:ASP:OD2	1:C:47:ARG:HG3	1.98	0.64
1:A:92:GLU:OE1	1:A:329:ARG:NH1	2.23	0.64
1:C:18:ASN:ND2	1:C:329:ARG:HH22	1.95	0.64
1:C:22:VAL:HG11	1:C:70:MET:HE2	1.79	0.63
1:C:294:THR:HG21	1:C:314:SER:HB3	1.80	0.63
1:C:299:ILE:O	1:C:302:LEU:HD12	1.98	0.63
1:C:247:GLU:N	1:C:247:GLU:OE2	2.33	0.62
1:B:17:LYS:HE2	1:B:363:PRO:HG3	1.81	0.61
1:C:236:HIS:HE2	1:C:291:SER:HB2	1.65	0.61
1:C:79:ILE:HD12	1:C:138:ARG:HH12	1.66	0.61
1:C:192:ARG:HA	1:C:321:GLN:HE21	1.65	0.60
1:C:289:ASN:OD1	1:C:290:GLN:N	2.33	0.60
1:B:325:GLY:H	1:B:361:ASN:ND2	1.98	0.60
1:C:18:ASN:HD22	1:C:329:ARG:CZ	2.15	0.59
1:C:115:MET:HE1	1:C:263:LEU:HB3	1.84	0.59
1:C:19:ILE:HD12	1:C:19:ILE:N	2.17	0.59
1:C:18:ASN:ND2	1:C:329:ARG:CZ	2.66	0.59
1:B:69:ASP:O	1:B:70:MET:HG3	2.02	0.59
1:A:30:LEU:HD13	1:A:33:ARG:NH1	2.18	0.59
1:A:83:ARG:HH11	1:A:83:ARG:HG2	1.68	0.58
1:B:216:LYS:HZ2	1:B:220:LYS:HE3	1.69	0.58
1:C:122:ASN:HD22	1:C:124:GLU:CG	2.15	0.58
1:A:170:ASP:HB2	1:A:182:LEU:HD11	1.87	0.57
1:A:293:LEU:HD21	1:A:297:ARG:HH22	1.69	0.57
1:C:124:GLU:HB2	1:C:125:TYR:CD1	2.39	0.57
1:B:271:ASN:HB3	1:B:289:ASN:OD1	2.05	0.56
1:B:293:LEU:HD11	1:B:297:ARG:NH2	2.21	0.56
1:C:186:ASP:HA	1:C:194:VAL:HA	1.88	0.56
1:A:311:TYR:CD1	1:A:321:GLN:HG3	2.41	0.55
1:C:18:ASN:HD22	1:C:329:ARG:NH2	2.01	0.55
1:B:288:ILE:HG23	1:B:289:ASN:ND2	2.21	0.55
1:B:70:MET:CE	1:B:84:SER:HB3	2.36	0.55
1:C:69:ASP:O	1:C:70:MET:HG3	2.06	0.55
1:C:183:GLN:NE2	5:C:502:HOH:O	2.23	0.55
1:B:172:LEU:HA	1:B:216:LYS:HE3	1.90	0.54
1:A:347:LEU:O	1:A:351:GLU:HG3	2.08	0.54
1:C:91:ASP:O	1:C:94:ILE:HG13	2.07	0.54
1:C:192:ARG:CA	1:C:321:GLN:HE21	2.21	0.54
1:A:23:VAL:HG11	1:A:50:VAL:HG21	1.90	0.54
1:C:143:ILE:HD13	1:C:243:ILE:HD11	1.90	0.54

*Continued on next page...*

*Continued from previous page...*

Atom-1	Atom-2	Interatomic distance (Å)	Clash overlap (Å)
1:C:236:HIS:NE2	1:C:291:SER:HB2	2.23	0.53
1:A:34:LYS:HE3	1:A:35:ALA:HB2	1.89	0.53
1:C:242:THR:HG23	1:C:260:LYS:CG	2.39	0.53
1:A:161:LEU:C	1:A:161:LEU:HD12	2.33	0.53
1:C:212:GLN:HA	1:C:215:GLU:HB2	1.91	0.53
1:C:240:SER:OG	1:C:262:ASN:OD1	2.20	0.52
1:B:17:LYS:HG2	1:B:361:ASN:C	2.35	0.52
1:C:18:ASN:HD21	1:C:329:ARG:HH22	1.57	0.52
1:C:119:ARG:NH2	5:C:505:HOH:O	2.39	0.52
1:B:153:GLU:HA	1:B:153:GLU:OE1	2.09	0.52
1:C:119:ARG:HH21	1:C:127:TRP:HB3	1.75	0.52
1:B:70:MET:HE1	1:B:84:SER:HB3	1.91	0.51
1:C:178:VAL:HG12	1:C:178:VAL:O	2.11	0.51
1:B:154:PHE:HA	1:B:244:HIS:O	2.11	0.51
1:C:115:MET:CE	1:C:263:LEU:HB3	2.41	0.51
1:B:147:LEU:O	1:B:150:ASN:HB3	2.11	0.51
2:C:401:ADP:O2'	5:C:501:HOH:O	2.20	0.50
1:A:246:LYS:HA	1:A:256:VAL:HG12	1.92	0.50
1:A:144:PHE:O	1:A:148:THR:HG22	2.12	0.50
1:C:294:THR:CG2	1:C:314:SER:HB3	2.41	0.50
1:A:221:ARG:NH1	5:A:504:HOH:O	2.43	0.49
1:A:300:THR:OG1	1:A:355:ARG:NH1	2.45	0.49
1:B:288:ILE:HG23	1:B:289:ASN:HD22	1.76	0.49
1:C:106:GLN:HG2	1:C:109:THR:CG2	2.43	0.49
1:C:155:SER:OG	1:C:244:HIS:HB2	2.13	0.49
1:B:216:LYS:NZ	1:B:220:LYS:HE3	2.27	0.49
1:A:106:GLN:HG2	1:A:109:THR:CG2	2.43	0.49
1:B:207:LYS:NZ	1:B:208:ASP:OD2	2.46	0.48
1:B:325:GLY:HA2	1:B:361:ASN:HD22	1.78	0.48
1:B:325:GLY:CA	1:B:361:ASN:HD22	2.27	0.47
1:A:326:GLY:O	1:A:361:ASN:HB3	2.14	0.47
1:C:98:ASN:OD1	1:C:260:LYS:HB3	2.14	0.47
1:C:290:GLN:O	1:C:293:LEU:HD23	2.14	0.47
1:C:18:ASN:ND2	1:C:329:ARG:NH1	2.63	0.47
1:C:19:ILE:CD1	1:C:302:LEU:HD13	2.45	0.46
1:C:148:THR:C	1:C:150:ASN:H	2.23	0.46
1:A:63:ARG:HD2	5:A:511:HOH:O	2.14	0.46
1:B:311:TYR:CG	1:B:321:GLN:HG3	2.51	0.46
1:C:70:MET:HE3	1:C:72:PHE:CZ	2.51	0.46
1:A:69:ASP:O	1:A:70:MET:HG3	2.16	0.46
1:B:63:ARG:HG2	1:B:63:ARG:NH1	2.30	0.46

*Continued on next page...*

*Continued from previous page...*

Atom-1	Atom-2	Interatomic distance (Å)	Clash overlap (Å)
1:A:146:LYS:O	1:A:150:ASN:HB2	2.16	0.45
1:B:90:LEU:HD12	1:B:90:LEU:HA	1.48	0.45
1:C:70:MET:HE2	1:C:70:MET:HB2	1.71	0.45
1:B:170:ASP:HB2	1:B:182:LEU:HD11	1.99	0.45
1:B:17:LYS:HE2	1:B:363:PRO:CG	2.46	0.45
1:B:63:ARG:HG2	1:B:63:ARG:HH11	1.82	0.45
1:C:66:TYR:OH	1:C:351:GLU:OE1	2.27	0.45
1:B:325:GLY:H	1:B:361:ASN:HD21	1.61	0.44
1:A:168:LEU:HB2	1:A:182:LEU:HB2	1.97	0.44
1:C:339:ALA:HB3	1:C:342:ASN:HD22	1.81	0.44
1:A:292:LEU:HD12	1:A:292:LEU:HA	1.73	0.44
1:B:89:ILE:O	1:B:93:VAL:HG23	2.18	0.44
1:B:294:THR:HG22	1:B:317:THR:HG21	2.00	0.44
1:A:197:LYS:HD3	1:A:197:LYS:HA	1.74	0.44
1:A:170:ASP:CG	1:A:173:ASN:HB2	2.43	0.43
1:B:326:GLY:O	1:B:361:ASN:HB3	2.19	0.43
1:C:262:ASN:ND2	1:C:323:SER:OG	2.50	0.43
1:B:17:LYS:HD3	1:B:363:PRO:HG3	2.00	0.43
1:A:291:SER:HA	1:A:314:SER:HB2	2.01	0.43
1:C:290:GLN:HA	1:C:293:LEU:HD23	2.00	0.43
1:A:216:LYS:HB2	1:A:216:LYS:HE2	1.80	0.43
1:A:31:ALA:O	1:A:34:LYS:HG3	2.19	0.42
1:A:30:LEU:HD13	1:A:33:ARG:HH12	1.83	0.42
1:C:300:THR:O	1:C:302:LEU:N	2.52	0.42
1:C:128:GLU:OE1	1:C:128:GLU:N	2.47	0.42
1:C:295:LEU:O	1:C:299:ILE:HD12	2.20	0.42
1:A:147:LEU:O	1:A:150:ASN:HB3	2.20	0.42
1:A:154:PHE:HA	1:A:244:HIS:O	2.19	0.42
1:B:211:TYR:HE1	1:B:215:GLU:OE1	2.03	0.42
1:C:106:GLN:HG2	1:C:109:THR:HG23	2.01	0.42
1:C:122:ASN:C	1:C:124:GLU:N	2.77	0.42
1:A:236:HIS:NE2	1:A:292:LEU:HD13	2.34	0.42
1:C:345:GLU:HG2	5:C:556:HOH:O	2.20	0.42
1:C:124:GLU:HB2	1:C:125:TYR:CE1	2.55	0.41
1:C:70:MET:HE1	1:C:84:SER:OG	2.21	0.41
1:B:17:LYS:CE	1:B:363:PRO:HG3	2.48	0.41
1:C:91:ASP:OD1	1:C:146:LYS:NZ	2.42	0.41
1:B:70:MET:HE3	1:B:84:SER:HB3	2.03	0.41
1:B:124:GLU:O	1:B:124:GLU:HG2	2.21	0.41
1:B:29:ASN:OD1	1:B:29:ASN:C	2.64	0.41
1:C:294:THR:H	1:C:294:THR:HG23	1.58	0.41

*Continued on next page...*

Continued from previous page...

Atom-1	Atom-2	Interatomic distance (Å)	Clash overlap (Å)
1:C:19:ILE:HD12	1:C:19:ILE:H	1.86	0.41
1:C:126:THR:HB	1:C:128:GLU:OE1	2.21	0.40
1:B:17:LYS:HG3	1:B:361:ASN:H	1.86	0.40
1:C:47:ARG:NH2	1:C:362:LYS:O	2.54	0.40
1:C:312:ARG:NH2	5:C:511:HOH:O	2.54	0.40
1:C:300:THR:HG22	1:C:355:ARG:O	2.22	0.40

There are no symmetry-related clashes.

## 5.3 Torsion angles [i](#)

### 5.3.1 Protein backbone [i](#)

In the following table, the Percentiles column shows the percent Ramachandran outliers of the chain as a percentile score with respect to all X-ray entries followed by that with respect to entries of similar resolution.

The Analysed column shows the number of residues for which the backbone conformation was analysed, and the total number of residues.

Mol	Chain	Analysed	Favoured	Allowed	Outliers	Percentiles	
1	A	323/368 (88%)	317 (98%)	6 (2%)	0	100	100
1	B	322/368 (88%)	317 (98%)	4 (1%)	1 (0%)	36	56
1	C	320/368 (87%)	309 (97%)	8 (2%)	3 (1%)	14	28
All	All	965/1104 (87%)	943 (98%)	18 (2%)	4 (0%)	30	50

All (4) Ramachandran outliers are listed below:

Mol	Chain	Res	Type
1	C	123	GLU
1	C	356	ALA
1	C	301	ALA
1	B	307	PRO

### 5.3.2 Protein sidechains [i](#)

In the following table, the Percentiles column shows the percent sidechain outliers of the chain as a percentile score with respect to all X-ray entries followed by that with respect to entries of similar resolution.

The Analysed column shows the number of residues for which the sidechain conformation was analysed, and the total number of residues.

Mol	Chain	Analysed	Rotameric	Outliers	Percentiles	
1	A	284/322 (88%)	284 (100%)	0	100	100
1	B	285/322 (88%)	285 (100%)	0	100	100
1	C	283/322 (88%)	282 (100%)	1 (0%)	84	91
All	All	852/966 (88%)	851 (100%)	1 (0%)	88	95

All (1) residues with a non-rotameric sidechain are listed below:

Mol	Chain	Res	Type
1	C	249	THR

Sometimes sidechains can be flipped to improve hydrogen bonding and reduce clashes. All (12) such sidechains are listed below:

Mol	Chain	Res	Type
1	A	165	ASN
1	A	271	ASN
1	B	18	ASN
1	B	106	GLN
1	B	262	ASN
1	B	271	ASN
1	B	342	ASN
1	B	361	ASN
1	C	18	ASN
1	C	141	HIS
1	C	150	ASN
1	C	271	ASN

### 5.3.3 RNA ⓘ

There are no RNA molecules in this entry.

## 5.4 Non-standard residues in protein, DNA, RNA chains ⓘ

There are no non-standard protein/DNA/RNA residues in this entry.

## 5.5 Carbohydrates [i](#)

There are no oligosaccharides in this entry.

## 5.6 Ligand geometry [i](#)

Of 9 ligands modelled in this entry, 3 are monoatomic - leaving 6 for Mogul analysis.

In the following table, the Counts columns list the number of bonds (or angles) for which Mogul statistics could be retrieved, the number of bonds (or angles) that are observed in the model and the number of bonds (or angles) that are defined in the Chemical Component Dictionary. The Link column lists molecule types, if any, to which the group is linked. The Z score for a bond length (or angle) is the number of standard deviations the observed value is removed from the expected value. A bond length (or angle) with  $|Z| > 2$  is considered an outlier worth inspection. RMSZ is the root-mean-square of all Z scores of the bond lengths (or angles).

Mol	Type	Chain	Res	Link	Bond lengths			Bond angles		
					Counts	RMSZ	# Z  > 2	Counts	RMSZ	# Z  > 2
4	GCE	B	403	-	26,31,31	3.64	6 (23%)	29,44,44	3.37	12 (41%)
4	GCE	A	403	-	26,31,31	3.64	5 (19%)	29,44,44	3.53	8 (27%)
2	ADP	C	401	-	28,29,29	1.61	4 (14%)	43,45,45	1.82	12 (27%)
4	GCE	C	403	-	26,31,31	3.59	6 (23%)	29,44,44	3.00	10 (34%)
2	ADP	A	401	3	28,29,29	1.36	3 (10%)	43,45,45	2.05	12 (27%)
2	ADP	B	401	3	28,29,29	1.70	5 (17%)	43,45,45	1.89	11 (25%)

In the following table, the Chirals column lists the number of chiral outliers, the number of chiral centers analysed, the number of these observed in the model and the number defined in the Chemical Component Dictionary. Similar counts are reported in the Torsion and Rings columns. '-' means no outliers of that kind were identified.

Mol	Type	Chain	Res	Link	Chirals	Torsions	Rings
4	GCE	B	403	-	-	10/20/40/40	0/3/3/3
4	GCE	A	403	-	-	5/20/40/40	0/3/3/3
2	ADP	C	401	-	-	5/16/32/32	0/3/3/3
4	GCE	C	403	-	-	11/20/40/40	0/3/3/3
2	ADP	A	401	3	-	3/16/32/32	0/3/3/3
2	ADP	B	401	3	-	2/16/32/32	0/3/3/3

All (29) bond length outliers are listed below:

Mol	Chain	Res	Type	Atoms	Z	Observed(Å)	Ideal(Å)
4	A	403	GCE	C08-N09	12.66	1.53	1.29

*Continued on next page...*



*Continued from previous page...*

Mol	Chain	Res	Type	Atoms	Z	Observed(Å)	Ideal(Å)
4	C	403	GCE	C08-N09	12.52	1.53	1.29
4	B	403	GCE	C08-N09	12.25	1.52	1.29
4	B	403	GCE	C08-S07	-10.58	1.59	1.76
4	A	403	GCE	C08-S07	-9.77	1.60	1.76
4	C	403	GCE	C08-S07	-9.13	1.61	1.76
4	A	403	GCE	N05-N09	7.28	1.55	1.39
4	B	403	GCE	N05-N09	7.11	1.54	1.39
4	C	403	GCE	N05-N09	7.09	1.54	1.39
2	C	401	ADP	C5-C4	5.74	1.49	1.39
2	B	401	ADP	C5-C4	4.94	1.47	1.39
4	C	403	GCE	C10-C08	4.87	1.54	1.47
2	B	401	ADP	PA-O3A	4.64	1.64	1.59
4	A	403	GCE	C10-C08	4.23	1.53	1.47
2	A	401	ADP	C5-C4	4.05	1.46	1.39
2	A	401	ADP	C5-N7	-3.46	1.32	1.39
4	B	403	GCE	C10-C08	3.02	1.51	1.47
2	C	401	ADP	C5-C6	2.88	1.49	1.41
2	B	401	ADP	C5-C6	2.80	1.48	1.41
4	B	403	GCE	C03-N05	2.47	1.45	1.38
4	A	403	GCE	C03-N05	2.40	1.45	1.38
2	C	401	ADP	C8-N7	2.36	1.36	1.31
4	B	403	GCE	O04-C03	-2.34	1.18	1.22
4	C	403	GCE	C03-N05	2.30	1.44	1.38
2	B	401	ADP	C5-N7	-2.25	1.35	1.39
2	C	401	ADP	C5-N7	-2.22	1.35	1.39
2	A	401	ADP	C8-N9	-2.16	1.33	1.37
4	C	403	GCE	O04-C03	-2.15	1.18	1.22
2	B	401	ADP	C8-N7	2.02	1.35	1.31

All (65) bond angle outliers are listed below:

Mol	Chain	Res	Type	Atoms	Z	Observed(°)	Ideal(°)
4	A	403	GCE	S07-C08-N09	-14.90	107.09	115.85
4	B	403	GCE	S07-C08-N09	-13.87	107.70	115.85
4	C	403	GCE	S07-C08-N09	-11.72	108.96	115.85
4	C	403	GCE	C10-C08-S07	6.14	132.09	120.08
2	A	401	ADP	N3-C4-N9	5.87	137.15	127.17
4	A	403	GCE	C10-C08-S07	5.73	131.29	120.08
2	A	401	ADP	C5-C4-N3	-5.68	118.90	126.72
4	A	403	GCE	C03-N05-N09	5.35	127.68	120.06
4	A	403	GCE	C08-N09-N05	-5.29	108.14	112.83
2	C	401	ADP	C5-C4-N3	-5.18	119.59	126.72

*Continued on next page...*

*Continued from previous page...*

Mol	Chain	Res	Type	Atoms	Z	Observed(°)	Ideal(°)
2	B	401	ADP	C5-C4-N3	-5.15	119.63	126.72
4	B	403	GCE	C03-N05-N09	5.13	127.36	120.06
4	B	403	GCE	C15-C10-C11	5.00	123.04	116.83
2	B	401	ADP	N3-C4-N9	4.91	135.53	127.17
2	C	401	ADP	N3-C4-N9	4.82	135.36	127.17
4	C	403	GCE	C03-N05-N09	4.23	126.08	120.06
2	B	401	ADP	C4-N9-C8	3.86	109.79	105.74
4	B	403	GCE	C12-C11-C10	-3.78	118.99	123.07
2	C	401	ADP	C4-N9-C8	3.60	109.52	105.74
2	A	401	ADP	N3-C2-N1	-3.58	123.16	128.58
2	A	401	ADP	C4-N9-C8	3.54	109.46	105.74
4	B	403	GCE	C10-C08-S07	3.51	126.95	120.08
2	A	401	ADP	C2-N3-C4	3.49	120.34	111.83
2	A	401	ADP	N6-C6-N1	3.40	125.96	118.38
2	C	401	ADP	C4-C5-N7	-3.26	106.86	110.58
4	B	403	GCE	C15-C10-C08	-3.21	114.89	120.08
4	A	403	GCE	O28-N02-C01	3.18	119.20	114.36
2	B	401	ADP	C4-C5-N7	-3.13	107.01	110.58
4	A	403	GCE	C15-C10-C11	3.12	120.71	116.83
2	B	401	ADP	C2-N3-C4	3.06	119.31	111.83
4	C	403	GCE	C12-C11-C10	-3.06	119.78	123.07
4	C	403	GCE	C08-N09-N05	-3.02	110.15	112.83
4	C	403	GCE	C15-C10-C08	-3.01	115.23	120.08
2	B	401	ADP	N3-C2-N1	-2.97	124.09	128.58
4	C	403	GCE	C15-C10-C11	2.90	120.43	116.83
4	A	403	GCE	C12-C11-C10	-2.87	119.98	123.07
2	B	401	ADP	C5-N7-C8	2.86	107.94	103.45
4	B	403	GCE	C23-C22-C06	-2.79	117.48	120.62
2	A	401	ADP	C5-C6-N6	-2.71	116.56	123.29
2	C	401	ADP	C5-N7-C8	2.67	107.64	103.45
4	C	403	GCE	C29-O28-N02	2.62	113.04	109.85
2	C	401	ADP	C2-N3-C4	2.57	118.11	111.83
4	B	403	GCE	O28-N02-C01	2.57	118.26	114.36
4	B	403	GCE	C12-C13-C14	2.51	120.95	118.38
2	B	401	ADP	N9-C8-N7	-2.48	110.41	113.94
4	B	403	GCE	C08-N09-N05	-2.47	110.64	112.83
4	C	403	GCE	O28-N02-C03	2.44	121.57	116.71
2	B	401	ADP	C2-N1-C6	2.42	122.70	118.73
2	A	401	ADP	C3'-C2'-C1'	2.38	105.97	101.46
2	B	401	ADP	N6-C6-N1	2.37	123.66	118.38
4	A	403	GCE	F16-C14-C15	2.30	121.56	118.28
2	A	401	ADP	O3B-PB-O2B	2.30	116.42	107.80

*Continued on next page...*

*Continued from previous page...*

Mol	Chain	Res	Type	Atoms	Z	Observed(°)	Ideal(°)
2	B	401	ADP	C2'-C1'-N9	-2.30	107.59	113.30
2	C	401	ADP	N6-C6-N1	2.28	123.46	118.38
2	A	401	ADP	C5-N7-C8	2.21	106.93	103.45
2	C	401	ADP	C2-N1-C6	2.21	122.36	118.73
2	C	401	ADP	C2'-C3'-C4'	2.18	106.82	102.61
2	A	401	ADP	C1'-N9-C8	-2.15	122.33	127.09
2	C	401	ADP	N9-C8-N7	-2.13	110.92	113.94
4	B	403	GCE	C13-C14-C15	-2.12	120.43	123.23
2	C	401	ADP	O3A-PB-O1B	-2.12	99.89	111.04
2	A	401	ADP	N9-C8-N7	-2.09	110.98	113.94
4	C	403	GCE	C13-C14-C15	-2.04	120.53	123.23
2	C	401	ADP	O5'-C5'-C4'	2.04	115.95	108.99
4	B	403	GCE	C18-C19-C20	2.04	116.23	112.21

There are no chirality outliers.

All (36) torsion outliers are listed below:

Mol	Chain	Res	Type	Atoms
2	A	401	ADP	PA-O3A-PB-O3B
2	B	401	ADP	PA-O3A-PB-O2B
2	C	401	ADP	C5'-O5'-PA-O3A
2	C	401	ADP	O4'-C4'-C5'-O5'
4	B	403	GCE	C01-N02-O28-C29
4	C	403	GCE	C22-C06-C18-C19
4	C	403	GCE	N05-C06-C18-C19
4	C	403	GCE	S07-C06-C18-C19
4	C	403	GCE	C01-N02-O28-C29
4	C	403	GCE	C03-N02-O28-C29
2	C	401	ADP	C3'-C4'-C5'-O5'
4	B	403	GCE	C18-C06-C22-C27
4	B	403	GCE	S07-C08-C10-C11
4	A	403	GCE	C03-N02-O28-C29
4	C	403	GCE	C18-C06-C22-C23
4	C	403	GCE	C18-C19-C20-N21
4	B	403	GCE	N05-C06-C22-C23
4	B	403	GCE	N05-C06-C22-C27
4	C	403	GCE	N05-C06-C22-C27
2	C	401	ADP	C5'-O5'-PA-O1A
4	B	403	GCE	C18-C19-C20-N21
4	A	403	GCE	C18-C06-C22-C23
4	A	403	GCE	C18-C06-C22-C27
4	B	403	GCE	C18-C06-C22-C23

*Continued on next page...*

*Continued from previous page...*

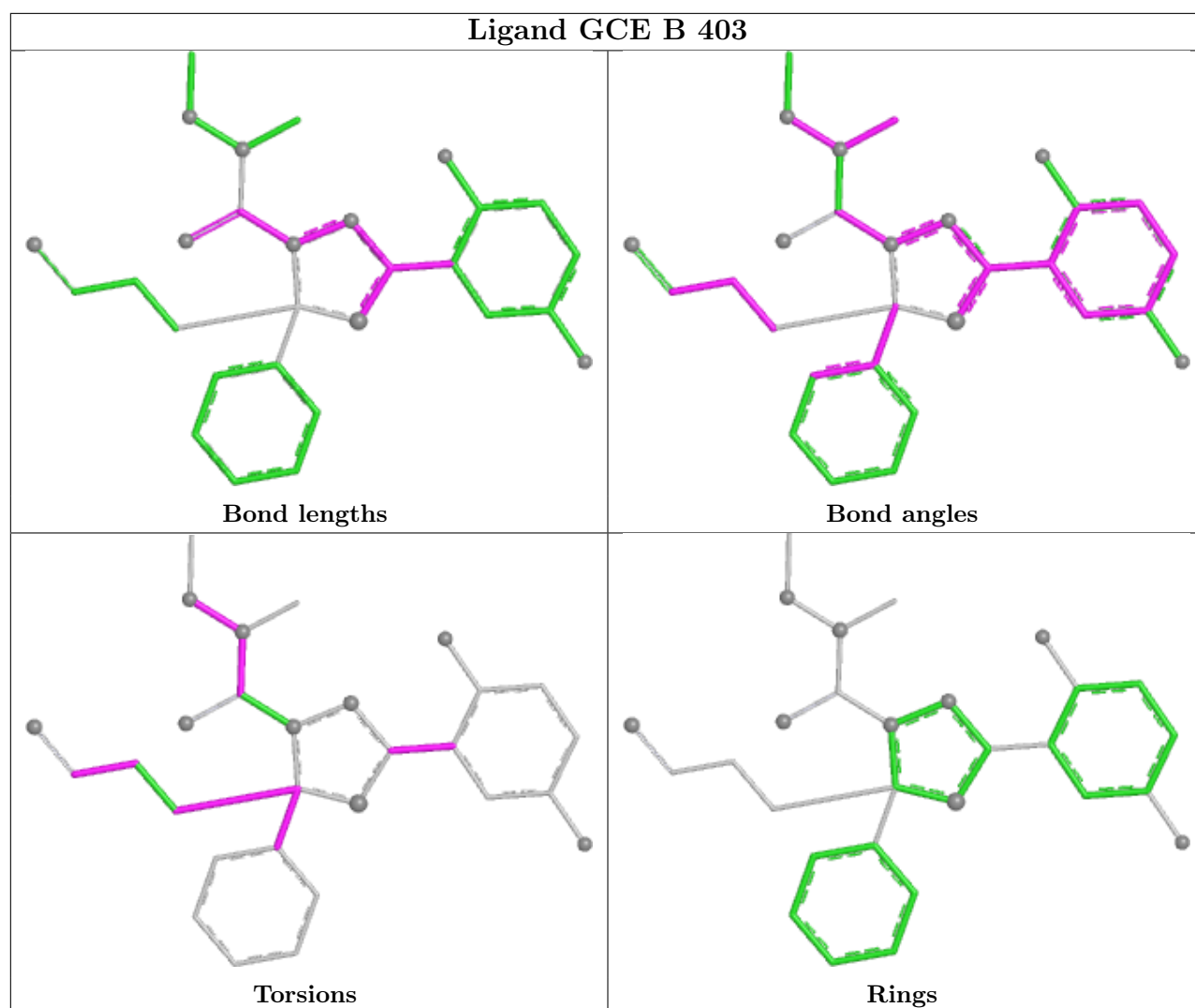
Mol	Chain	Res	Type	Atoms
4	C	403	GCE	C18-C06-C22-C27
4	B	403	GCE	C22-C06-C18-C19
2	A	401	ADP	PA-O3A-PB-O1B
2	A	401	ADP	PA-O3A-PB-O2B
2	B	401	ADP	PA-O3A-PB-O3B
2	C	401	ADP	PB-O3A-PA-O1A
4	A	403	GCE	N05-C06-C22-C27
4	C	403	GCE	N05-C06-C22-C23
4	B	403	GCE	S07-C08-C10-C15
4	A	403	GCE	O04-C03-N02-C01
4	B	403	GCE	O04-C03-N02-C01
4	C	403	GCE	O04-C03-N02-C01

There are no ring outliers.

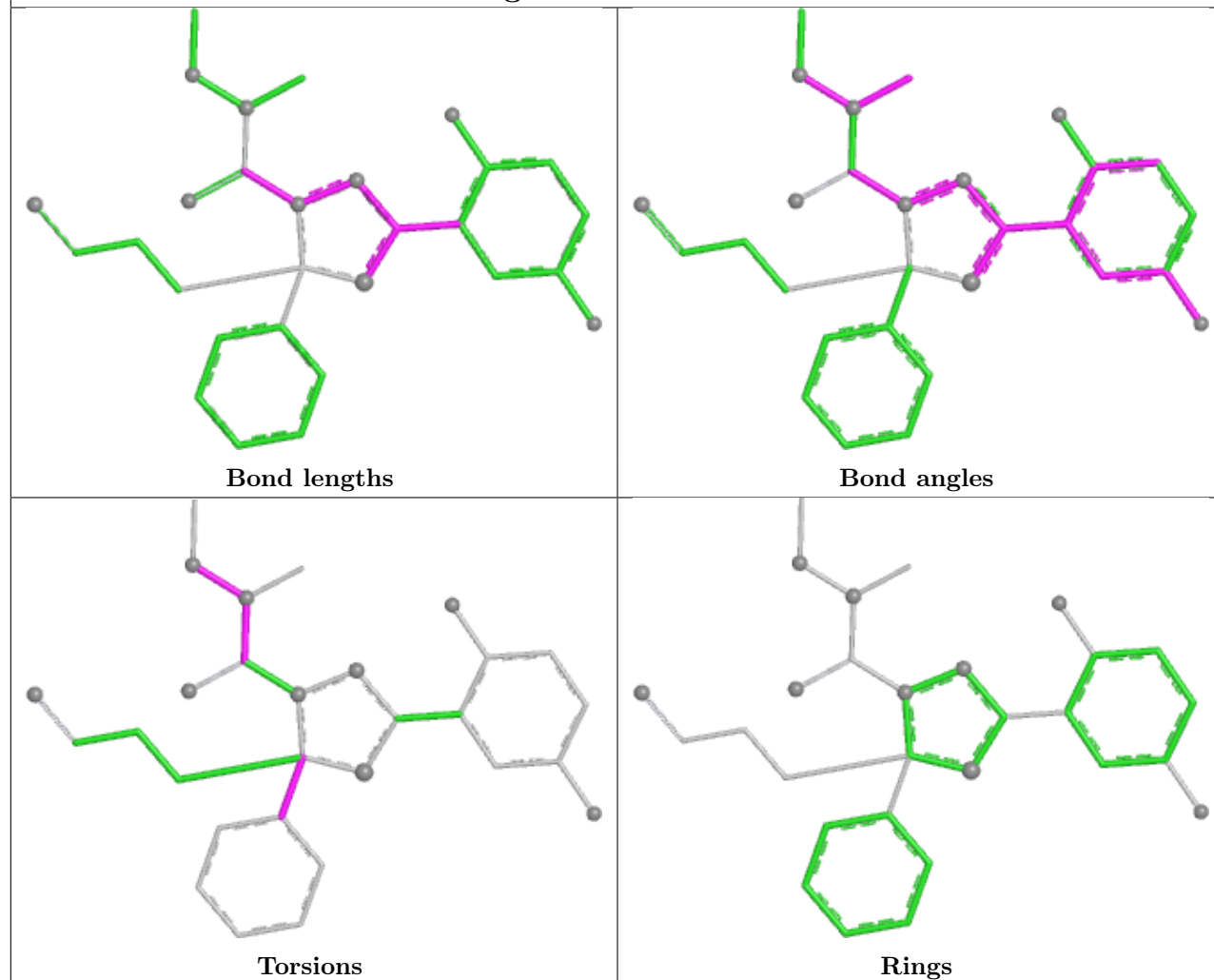
1 monomer is involved in 1 short contact:

Mol	Chain	Res	Type	Clashes	Symm-Clashes
2	C	401	ADP	1	0

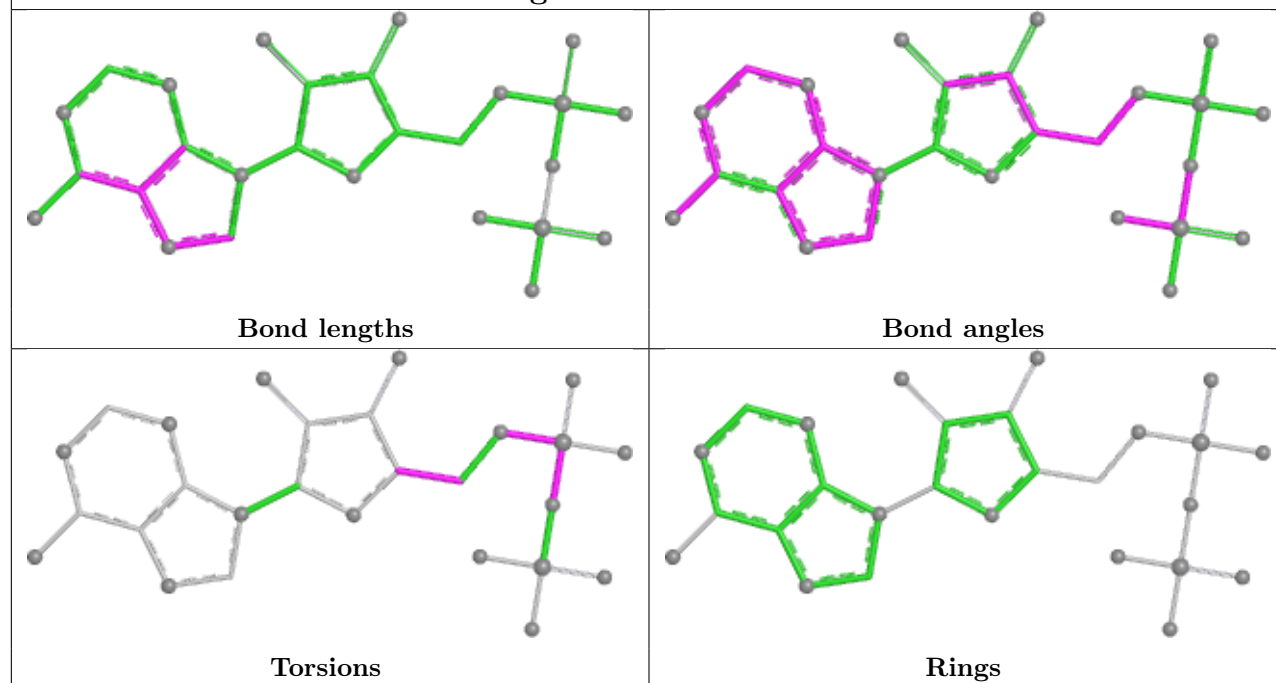
The following is a two-dimensional graphical depiction of Mogul quality analysis of bond lengths, bond angles, torsion angles, and ring geometry for all instances of the Ligand of Interest. In addition, ligands with molecular weight > 250 and outliers as shown on the validation Tables will also be included. For torsion angles, if less than 5% of the Mogul distribution of torsion angles is within 10 degrees of the torsion angle in question, then that torsion angle is considered an outlier. Any bond that is central to one or more torsion angles identified as an outlier by Mogul will be highlighted in the graph. For rings, the root-mean-square deviation (RMSD) between the ring in question and similar rings identified by Mogul is calculated over all ring torsion angles. If the average RMSD is greater than 60 degrees and the minimal RMSD between the ring in question and any Mogul-identified rings is also greater than 60 degrees, then that ring is considered an outlier. The outliers are highlighted in purple. The color gray indicates Mogul did not find sufficient equivalents in the CSD to analyse the geometry.



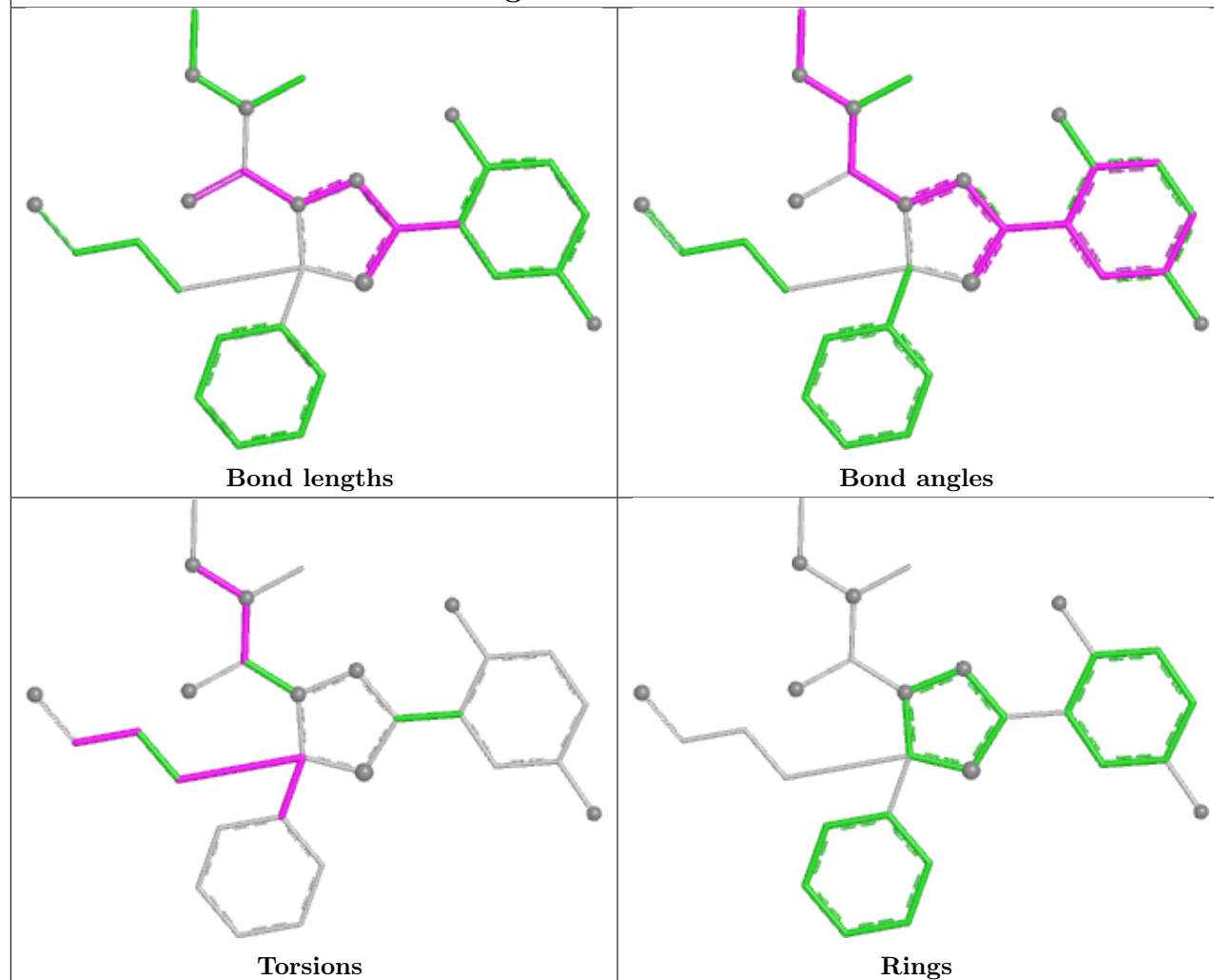
## Ligand GCE A 403



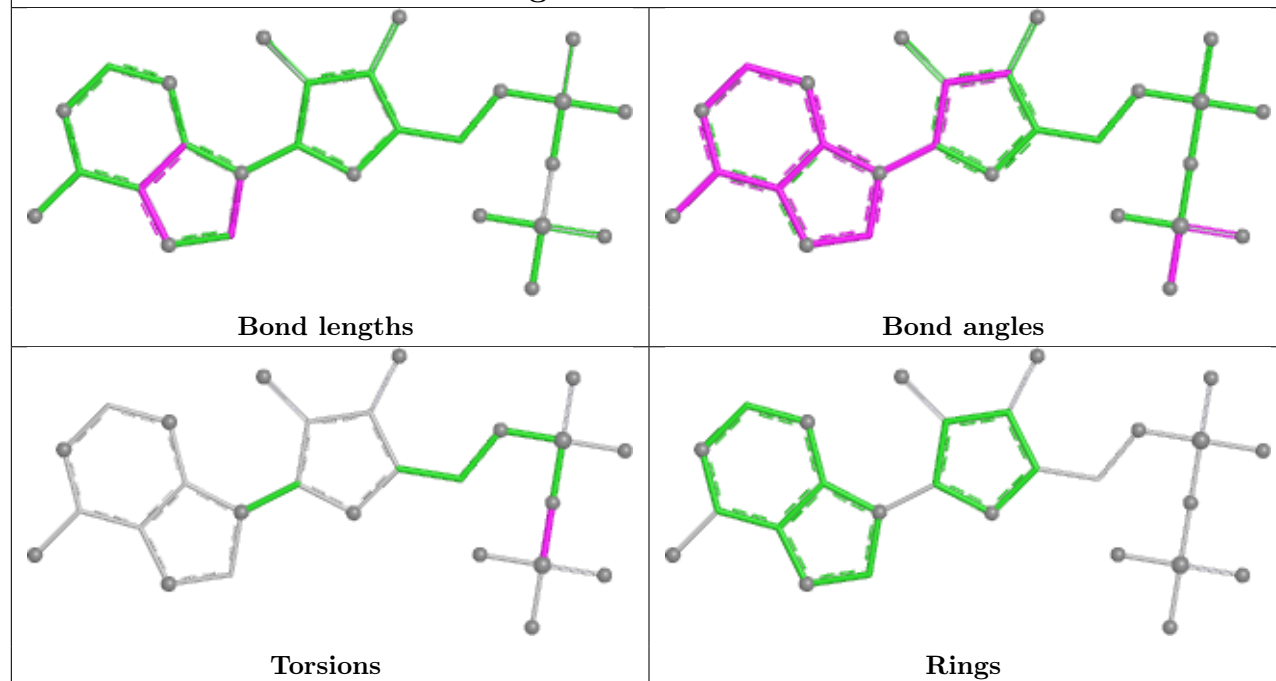
## Ligand ADP C 401

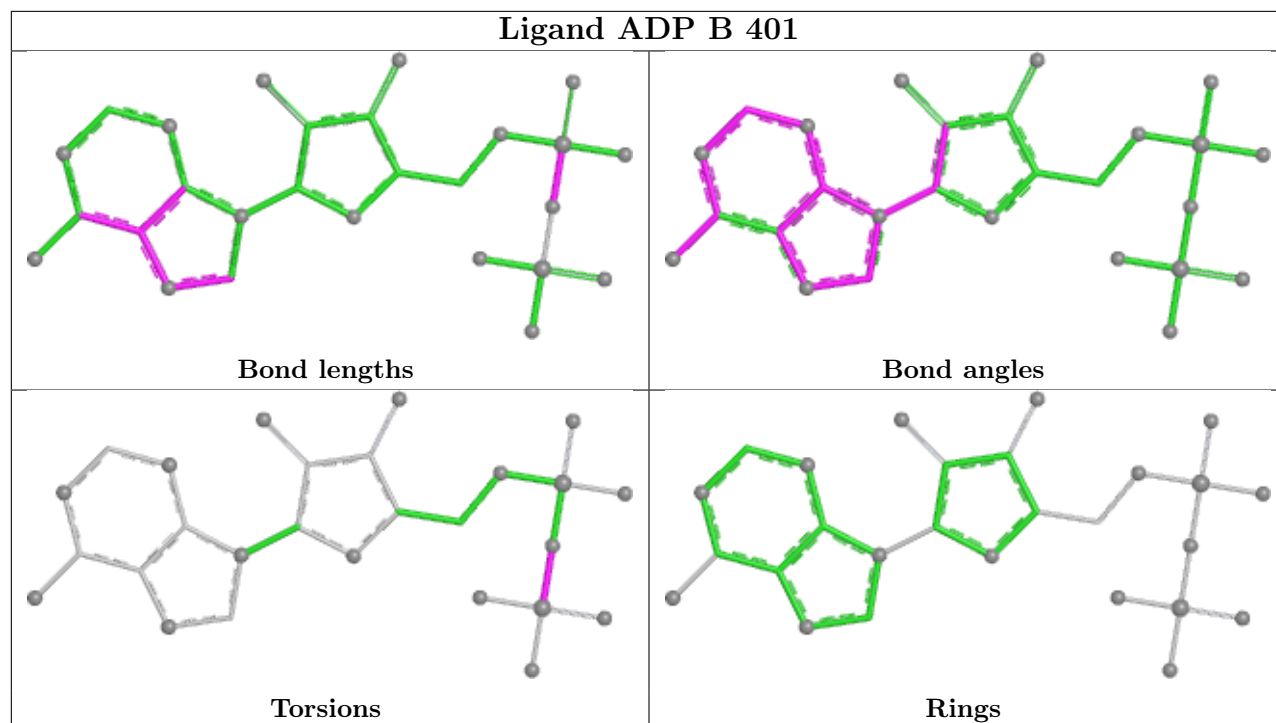


## Ligand GCE C 403



## Ligand ADP A 401





## 5.7 Other polymers [i](#)

There are no such residues in this entry.

## 5.8 Polymer linkage issues [i](#)

There are no chain breaks in this entry.



## 6 Fit of model and data [i](#)

### 6.1 Protein, DNA and RNA chains [i](#)

In the following table, the column labelled ‘#RSRZ > 2’ contains the number (and percentage) of RSRZ outliers, followed by percent RSRZ outliers for the chain as percentile scores relative to all X-ray entries and entries of similar resolution. The OWAB column contains the minimum, median, 95<sup>th</sup> percentile and maximum values of the occupancy-weighted average B-factor per residue. The column labelled ‘Q < 0.9’ lists the number of (and percentage) of residues with an average occupancy less than 0.9.

Mol	Chain	Analysed	<RSRZ>	#RSRZ>2	OWAB(Å <sup>2</sup> )	Q<0.9
1	A	328/368 (89%)	-0.61	2 (0%) 85 86	13, 30, 58, 89	1 (0%)
1	B	325/368 (88%)	-0.49	5 (1%) 72 71	13, 32, 70, 97	3 (0%)
1	C	324/368 (88%)	-0.15	4 (1%) 76 76	20, 43, 76, 96	2 (0%)
All	All	977/1104 (88%)	-0.42	11 (1%) 78 77	13, 34, 71, 97	6 (0%)

All (11) RSRZ outliers are listed below:

Mol	Chain	Res	Type	RSRZ
1	B	149	ASP	3.6
1	B	308[A]	HIS	3.1
1	C	290	GLN	3.1
1	C	293	LEU	2.9
1	B	255	LEU	2.9
1	C	327	ARG	2.6
1	B	17	LYS	2.6
1	C	302	LEU	2.4
1	B	363	PRO	2.3
1	A	247	GLU	2.2
1	A	149	ASP	2.1

### 6.2 Non-standard residues in protein, DNA, RNA chains [i](#)

There are no non-standard protein/DNA/RNA residues in this entry.

### 6.3 Carbohydrates [i](#)

There are no oligosaccharides in this entry.

## 6.4 Ligands

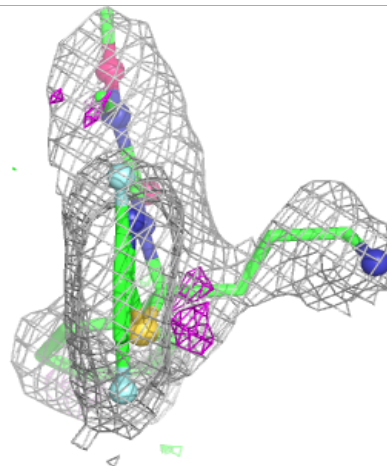
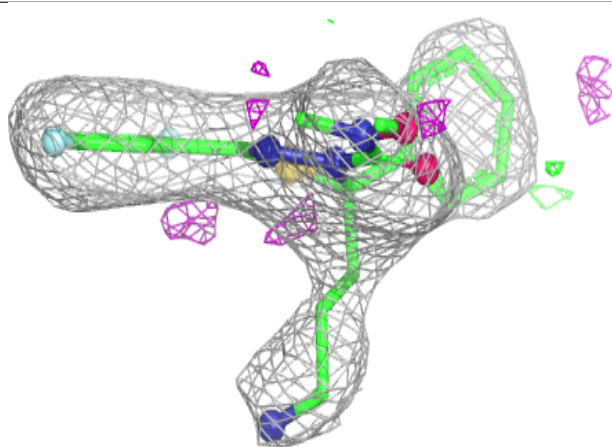
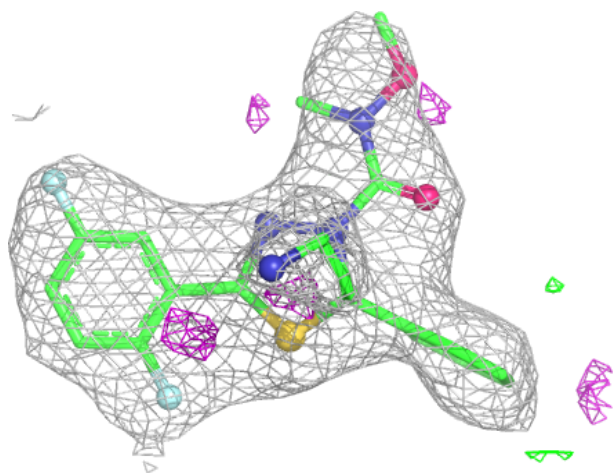
In the following table, the Atoms column lists the number of modelled atoms in the group and the number defined in the chemical component dictionary. The B-factors column lists the minimum, median, 95<sup>th</sup> percentile and maximum values of B factors of atoms in the group. The column labelled 'Q< 0.9' lists the number of atoms with occupancy less than 0.9.

Mol	Type	Chain	Res	Atoms	RSCC	RSR	B-factors(Å <sup>2</sup> )	Q<0.9
3	MG	C	402	1/1	0.92	0.06	44,44,44,44	0
4	GCE	C	403	29/29	0.93	0.10	29,44,55,69	0
4	GCE	A	403	29/29	0.95	0.08	24,33,47,68	0
4	GCE	B	403	29/29	0.96	0.07	19,29,38,61	0
3	MG	A	402	1/1	0.96	0.07	36,36,36,36	0
2	ADP	C	401	27/27	0.97	0.06	19,41,60,61	0
2	ADP	B	401	27/27	0.98	0.05	17,32,44,50	0
3	MG	B	402	1/1	0.98	0.05	32,32,32,32	0
2	ADP	A	401	27/27	0.98	0.05	17,28,32,41	0

The following is a graphical depiction of the model fit to experimental electron density of all instances of the Ligand of Interest. In addition, ligands with molecular weight > 250 and outliers as shown on the geometry validation Tables will also be included. Each fit is shown from different orientation to approximate a three-dimensional view.

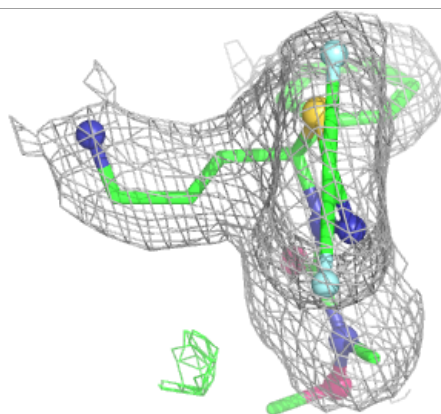
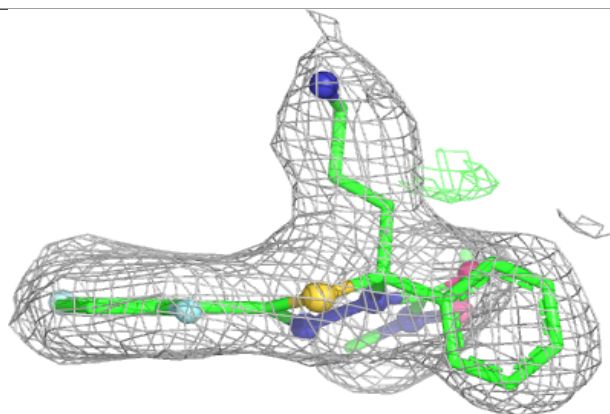
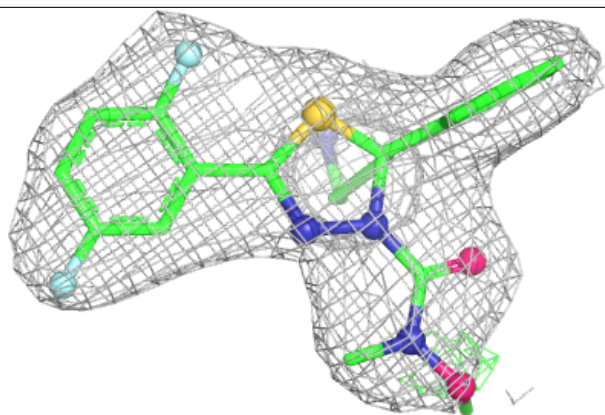
**Electron density around GCE C 403:**

$2mF_o-DF_c$  (at 0.7 rmsd) in gray  
 $mF_o-DF_c$  (at 3 rmsd) in purple (negative)  
and green (positive)



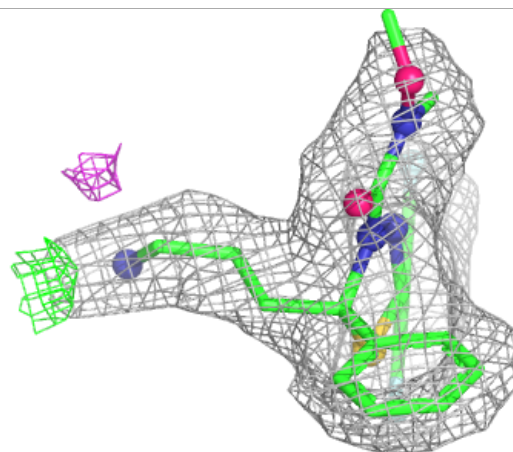
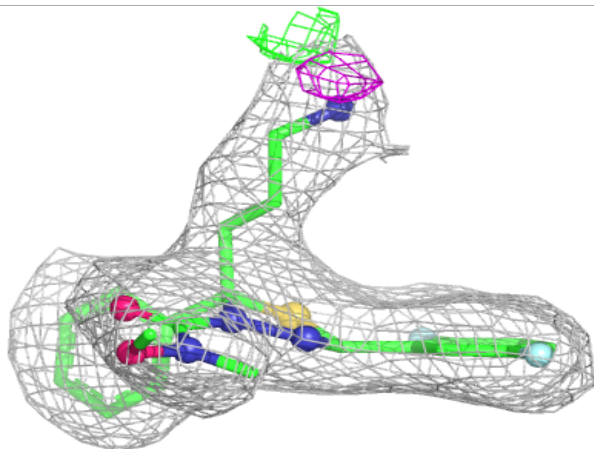
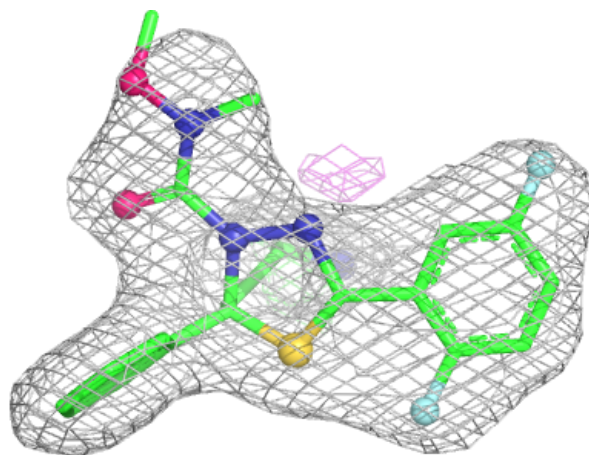
**Electron density around GCE A 403:**

$2mF_o - DF_c$  (at 0.7 rmsd) in gray  
 $mF_o - DF_c$  (at 3 rmsd) in purple (negative)  
and green (positive)



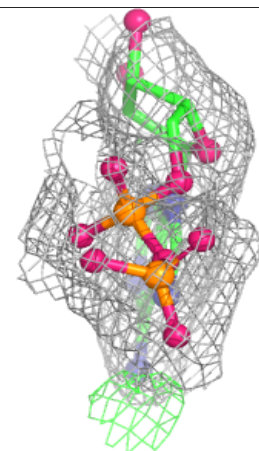
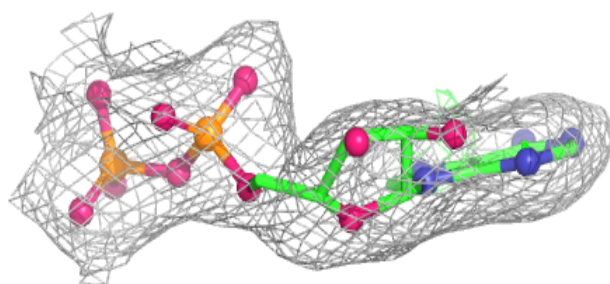
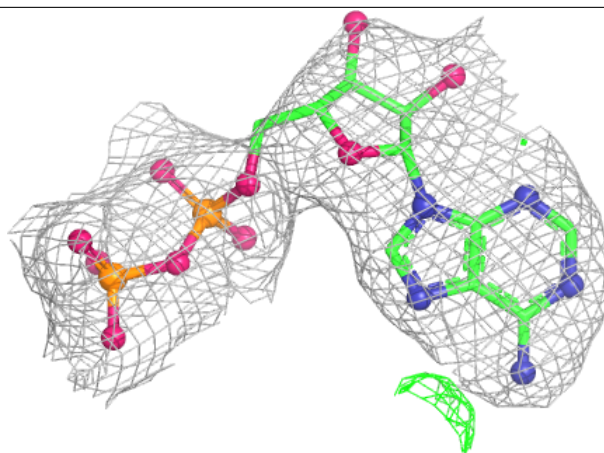
**Electron density around GCE B 403:**

$2mF_o-DF_c$  (at 0.7 rmsd) in gray  
 $mF_o-DF_c$  (at 3 rmsd) in purple (negative)  
and green (positive)

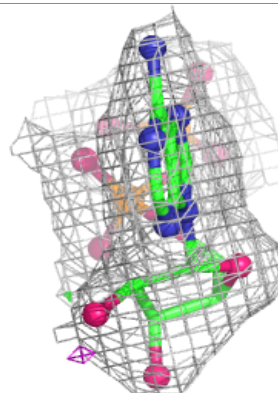
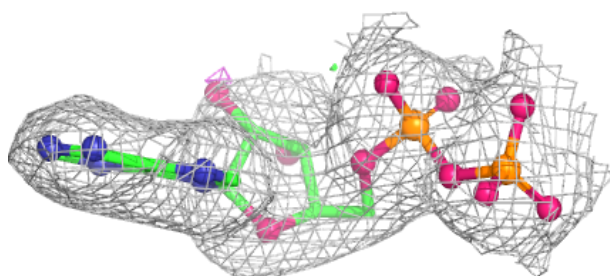
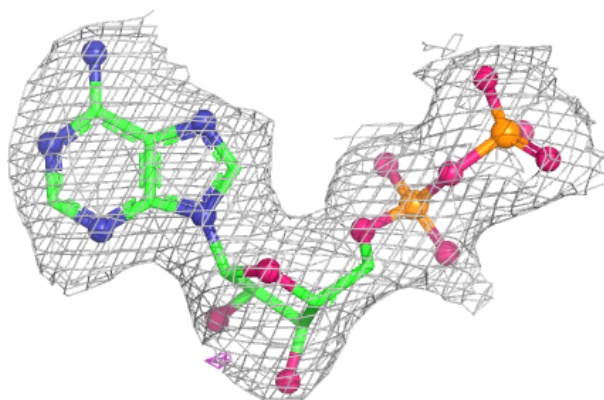


**Electron density around ADP C 401:**

$2mF_o-DF_c$  (at 0.7 rmsd) in gray  
 $mF_o-DF_c$  (at 3 rmsd) in purple (negative)  
and green (positive)

**Electron density around ADP B 401:**

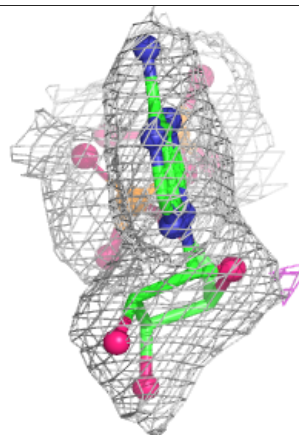
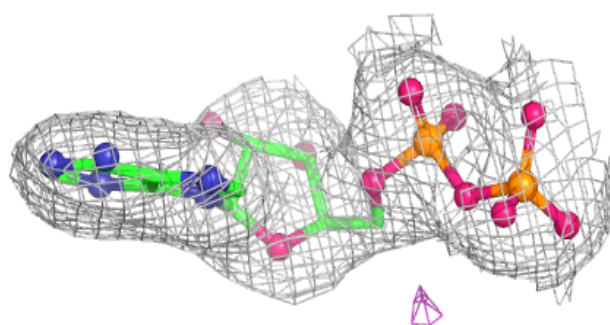
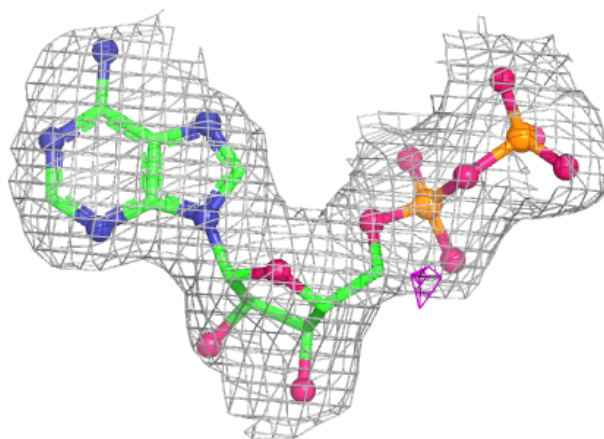
$2mF_o-DF_c$  (at 0.7 rmsd) in gray  
 $mF_o-DF_c$  (at 3 rmsd) in purple (negative)  
and green (positive)





**Electron density around ADP A 401:**

$2mF_o - DF_c$  (at 0.7 rmsd) in gray  
 $mF_o - DF_c$  (at 3 rmsd) in purple (negative)  
and green (positive)



## 6.5 Other polymers [i](#)

There are no such residues in this entry.