



Full wwPDB X-ray Structure Validation Report ⓘ

Mar 17, 2026 – 11:25 PM UTC

PDB ID : 6JMH / pdb_00006jmh
Title : Structure of the Oxomolybdenum Mesoporphyrin IX-Reconstituted CYP102A1 Haem Domain with N-Abietoyl-L-Tryptophan
Authors : Stanfield, J.K.; Omura, K.; Kasai, C.; Sugimoto, H.; Shiro, Y.; Watanabe, Y.; Shoji, O.
Deposited on : 2019-03-10
Resolution : 1.46 Å(reported)

This is a Full wwPDB X-ray Structure Validation Report for a publicly released PDB entry.

We welcome your comments at validation@mail.wwpdb.org

A user guide is available at

<https://www.wwpdb.org/validation/2017/XrayValidationReportHelp>

with specific help available everywhere you see the ⓘ symbol.

The types of validation reports are described at

<http://www.wwpdb.org/validation/2017/FAQs#types>.

The following versions of software and data (see [references ⓘ](#)) were used in the production of this report:

MolProbity	:	4-5-2 with Phenix2.0
Mogul	:	2022.3.0, CSD as543be (2022)
Xtriage (Phenix)	:	2.0
EDS	:	3.0
Buster-report	:	wwPDB partial adaption of 1.1.7 (2018)
Percentile statistics	:	20250101.v01 (using entries in the PDB archive January 1st 2025)
CCP4	:	9.0.010 (Gargrove)
Density-Fitness	:	1.0.12
Ideal geometry (proteins)	:	Engh & Huber (2001)
Ideal geometry (DNA, RNA)	:	Parkinson et al. (1996)
Validation Pipeline (wwPDB-VP)	:	2.49

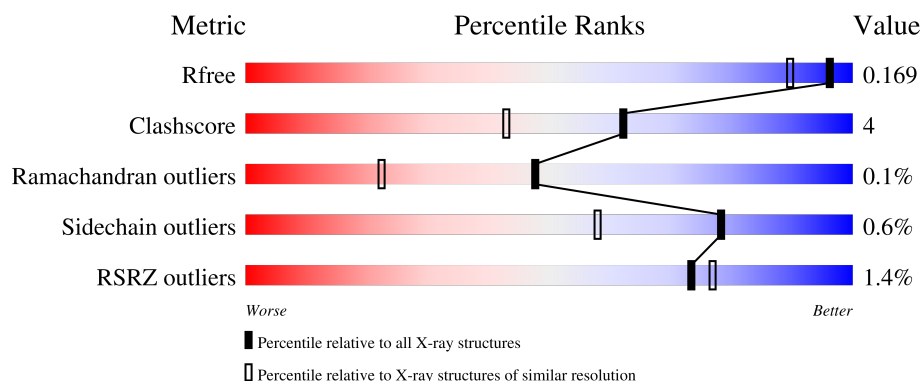
1 Overall quality at a glance

The following experimental techniques were used to determine the structure:

X-RAY DIFFRACTION

The reported resolution of this entry is 1.46 Å.

Percentile scores (ranging between 0-100) for global validation metrics of the entry are shown in the following graphic. The table shows the number of entries on which the scores are based.



Metric	Whole archive (#Entries)	Similar resolution (#Entries, resolution range(Å))
R_{free}	180053	1756 (1.46-1.46)
Clashscore	190562	1795 (1.46-1.46)
Ramachandran outliers	187476	1776 (1.46-1.46)
Sidechain outliers	187428	1776 (1.46-1.46)
RSRZ outliers	180081	1756 (1.46-1.46)

The table below summarises the geometric issues observed across the polymeric chains and their fit to the electron density. The red, orange, yellow and green segments of the lower bar indicate the fraction of residues that contain outliers for ≥ 3 , 2, 1 and 0 types of geometric quality criteria respectively. A grey segment represents the fraction of residues that are not modelled. The numeric value for each fraction is indicated below the corresponding segment, with a dot representing fractions $\leq 5\%$. The upper red bar (where present) indicates the fraction of residues that have poor fit to the electron density. The numeric value is given above the bar.

Mol	Chain	Length	Quality of chain
1	A	456	<div> <div></div> <div>93%</div> <div>7%</div> </div>
1	B	456	<div> <div>2%</div> <div>92%</div> <div>8%</div> </div>

The following table lists non-polymeric compounds, carbohydrate monomers and non-standard residues in protein, DNA, RNA chains that are outliers for geometric or electron-density-fit criteria:

Mol	Type	Chain	Res	Chirality	Geometry	Clashes	Electron density
2	MI9	A	501	X	-	-	-
2	MI9	B	501	X	-	-	-

2 Entry composition [i](#)

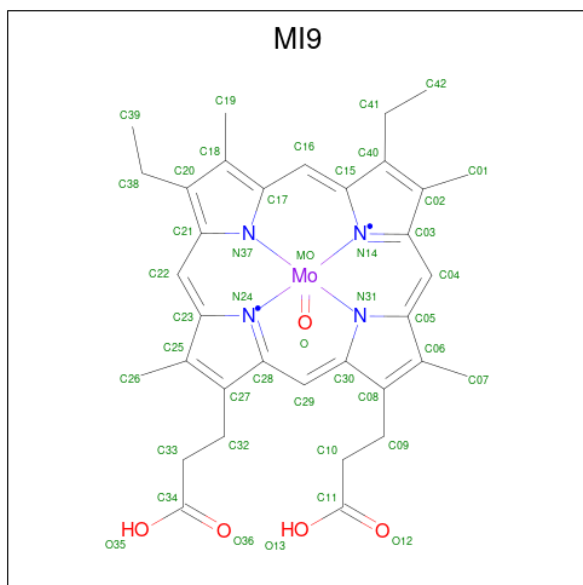
There are 6 unique types of molecules in this entry. The entry contains 8942 atoms, of which 0 are hydrogens and 0 are deuteriums.

In the tables below, the ZeroOcc column contains the number of atoms modelled with zero occupancy, the AltConf column contains the number of residues with at least one atom in alternate conformation and the Trace column contains the number of residues modelled with at most 2 atoms.

- Molecule 1 is a protein called Bifunctional cytochrome P450/NADPH-P450 reductase.

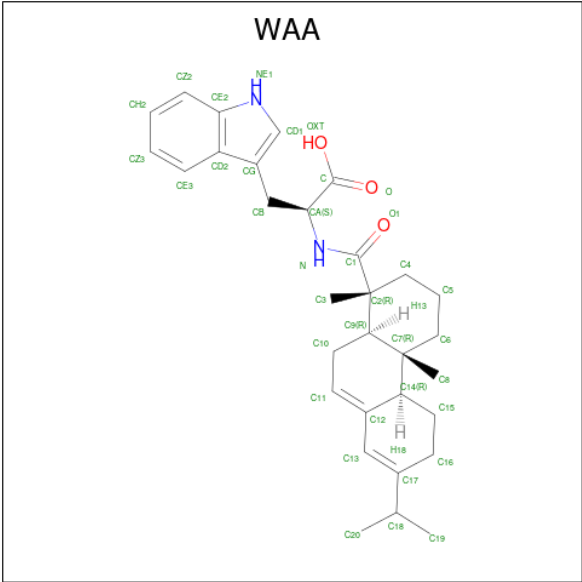
Mol	Chain	Residues	Atoms					ZeroOcc	AltConf	Trace
1	A	455	Total	C	N	O	S	0	32	0
			3950	2515	670	744	21			
1	B	455	Total	C	N	O	S	0	26	0
			3896	2485	659	731	21			

- Molecule 2 is Oxomolybdenum Mesoporphyrin IX (CCD ID: MI9) (formula: $C_{34}H_{36}MoN_4O_5$).



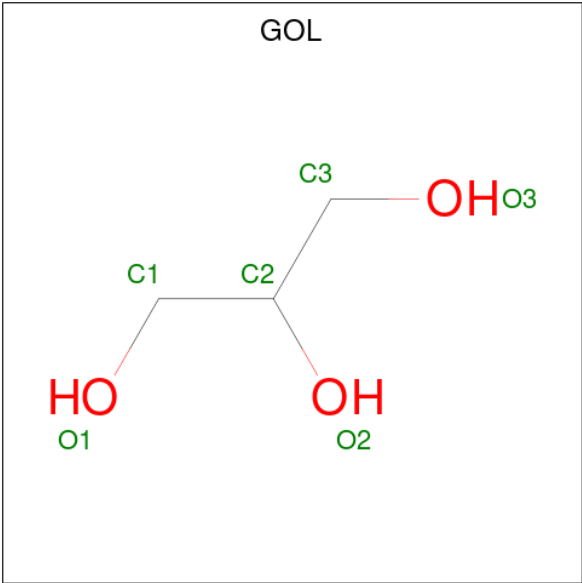
Mol	Chain	Residues	Atoms					ZeroOcc	AltConf
2	A	1	Total	C	Mo	N	O	0	0
			44	34	1	4	5		
2	B	1	Total	C	Mo	N	O	0	0
			44	34	1	4	5		

- Molecule 3 is (2S)-2-[[[(1R,4aR,4bR,10aR)-1,4a-dimethyl-7-propan-2-yl-2,3,4,4b,5,6,10,10a-octahydrophenanthren-1-yl]carbonylamino]-3-(1H-indol-3-yl)propanoic acid (CCD ID: WAA) (formula: $C_{31}H_{40}N_2O_3$).



Mol	Chain	Residues	Atoms				ZeroOcc	AltConf
3	A	1	Total	C	N	O	0	0
			36	31	2	3		
3	B	1	Total	C	N	O	0	0
			36	31	2	3		

- Molecule 4 is GLYCEROL (CCD ID: GOL) (formula: C₃H₈O₃).



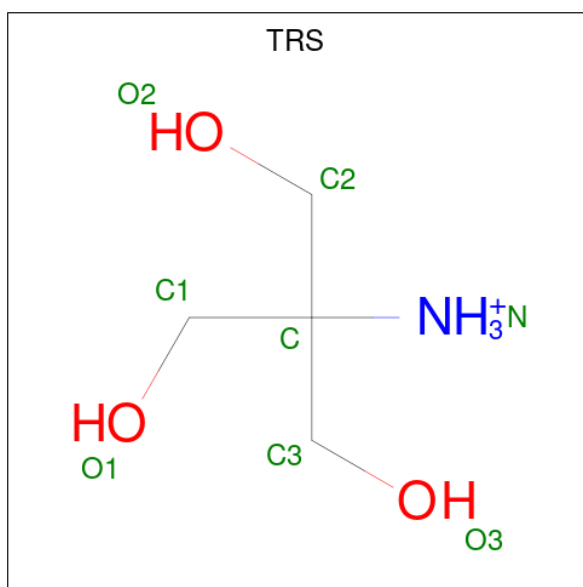
Mol	Chain	Residues	Atoms			ZeroOcc	AltConf
4	A	1	Total	C	O	0	0
			6	3	3		
4	A	1	Total	C	O	0	0
			6	3	3		

Continued on next page...

Continued from previous page...

Mol	Chain	Residues	Atoms			ZeroOcc	AltConf
4	A	1	Total	C	O	0	0
			6	3	3		
4	A	1	Total	C	O	0	0
			6	3	3		
4	A	1	Total	C	O	0	0
			6	3	3		
4	A	1	Total	C	O	0	1
			12	6	6		
4	A	1	Total	C	O	0	1
			12	6	6		
4	A	1	Total	C	O	0	0
			6	3	3		
4	A	1	Total	C	O	0	1
			12	6	6		
4	A	1	Total	C	O	0	0
			6	3	3		
4	A	1	Total	C	O	0	0
			6	3	3		
4	B	1	Total	C	O	0	0
			6	3	3		
4	B	1	Total	C	O	0	0
			6	3	3		
4	B	1	Total	C	O	0	0
			6	3	3		
4	B	1	Total	C	O	0	0
			6	3	3		
4	B	1	Total	C	O	0	0
			6	3	3		
4	B	1	Total	C	O	0	0
			6	3	3		
4	B	1	Total	C	O	0	1
			12	6	6		
4	B	1	Total	C	O	0	1
			12	6	6		
4	B	1	Total	C	O	0	0
			6	3	3		
4	B	1	Total	C	O	0	0
			6	3	3		
4	B	1	Total	C	O	0	0
			6	3	3		

- Molecule 5 is 2-AMINO-2-HYDROXYMETHYL-PROPANE-1,3-DIOL (CCD ID: TRS) (formula: C₄H₁₂NO₃).



Mol	Chain	Residues	Atoms				ZeroOcc	AltConf
5	A	1	Total	C	N	O	0	0
			8	4	1	3		

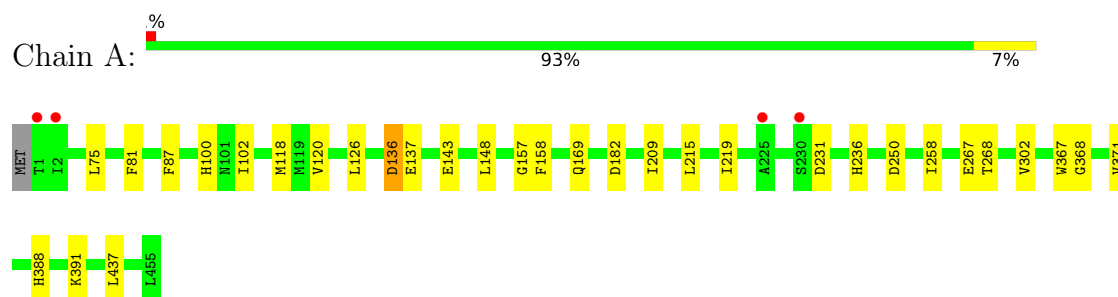
- Molecule 6 is water.

Mol	Chain	Residues	Atoms		ZeroOcc	AltConf
6	A	387	Total	O	0	0
			387	387		
6	B	379	Total	O	0	0
			379	379		

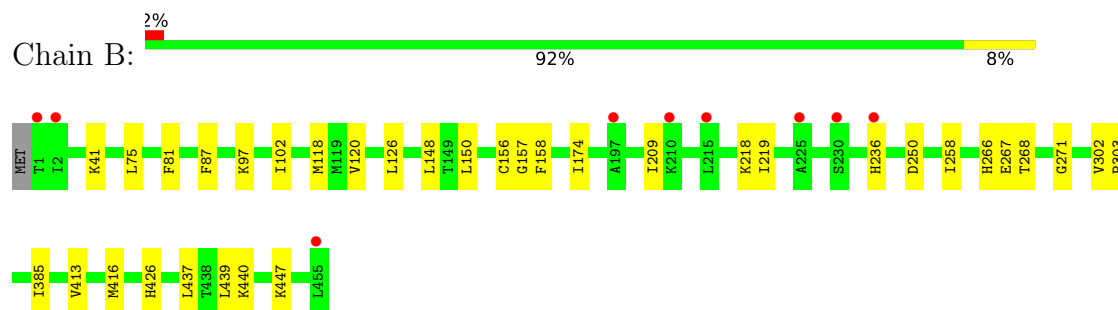
3 Residue-property plots [i](#)

These plots are drawn for all protein, RNA, DNA and oligosaccharide chains in the entry. The first graphic for a chain summarises the proportions of the various outlier classes displayed in the second graphic. The second graphic shows the sequence view annotated by issues in geometry and electron density. Residues are color-coded according to the number of geometric quality criteria for which they contain at least one outlier: green = 0, yellow = 1, orange = 2 and red = 3 or more. A red dot above a residue indicates a poor fit to the electron density ($RSRZ > 2$). Stretches of 2 or more consecutive residues without any outlier are shown as a green connector. Residues present in the sample, but not in the model, are shown in grey.

- Molecule 1: Bifunctional cytochrome P450/NADPH-P450 reductase



- Molecule 1: Bifunctional cytochrome P450/NADPH-P450 reductase



4 Data and refinement statistics

Property	Value	Source
Space group	P 1 21 1	Depositor
Cell constants a, b, c, α , β , γ	58.97Å 148.91Å 63.54Å 90.00° 98.34° 90.00°	Depositor
Resolution (Å)	48.08 – 1.46 48.08 – 1.46	Depositor EDS
% Data completeness (in resolution range)	97.5 (48.08-1.46) 97.5 (48.08-1.46)	Depositor EDS
R_{merge}	0.07	Depositor
R_{sym}	(Not available)	Depositor
$\langle I/\sigma(I) \rangle$ ¹	1.55 (at 1.46Å)	Xtriage
Refinement program	REFMAC 5.8.0238	Depositor
R, R_{free}	0.126 , 0.168 0.127 , 0.169	Depositor DCC
R_{free} test set	9043 reflections (4.83%)	wwPDB-VP
Wilson B-factor (Å ²)	19.6	Xtriage
Anisotropy	0.152	Xtriage
Bulk solvent k_{sol} (e/Å ³), B_{sol} (Å ²)	0.37 , 43.3	EDS
L-test for twinning ²	$\langle L \rangle = 0.49$, $\langle L^2 \rangle = 0.32$	Xtriage
Estimated twinning fraction	No twinning to report.	Xtriage
F_o, F_c correlation	0.98	EDS
Total number of atoms	8942	wwPDB-VP
Average B, all atoms (Å ²)	26.0	wwPDB-VP

Xtriage's analysis on translational NCS is as follows: *The largest off-origin peak in the Patterson function is 4.58% of the height of the origin peak. No significant pseudotranslation is detected.*

¹Intensities estimated from amplitudes.

²Theoretical values of $\langle |L| \rangle$, $\langle L^2 \rangle$ for acentric reflections are 0.5, 0.333 respectively for untwinned datasets, and 0.375, 0.2 for perfectly twinned datasets.

5 Model quality [i](#)

5.1 Standard geometry [i](#)

Bond lengths and bond angles in the following residue types are not validated in this section: TRS, WAA, GOL, MI9

The Z score for a bond length (or angle) is the number of standard deviations the observed value is removed from the expected value. A bond length (or angle) with $|Z| > 5$ is considered an outlier worth inspection. RMSZ is the root-mean-square of all Z scores of the bond lengths (or angles).

Mol	Chain	Bond lengths		Bond angles	
		RMSZ	$\# Z > 5$	RMSZ	$\# Z > 5$
1	A	0.89	0/4042	1.06	2/5458 (0.0%)
1	B	0.90	0/3988	1.07	1/5386 (0.0%)
All	All	0.90	0/8030	1.07	3/10844 (0.0%)

There are no bond length outliers.

All (3) bond angle outliers are listed below:

Mol	Chain	Res	Type	Atoms	Z	Observed(°)	Ideal(°)
1	B	250	ASP	CA-CB-CG	6.36	118.96	112.60
1	A	143	GLU	CB-CG-CD	5.29	121.59	112.60
1	A	250	ASP	CA-CB-CG	5.05	117.65	112.60

There are no chirality outliers.

There are no planarity outliers.

5.2 Too-close contacts [i](#)

In the following table, the Non-H and H(model) columns list the number of non-hydrogen atoms and hydrogen atoms in the chain respectively. The H(added) column lists the number of hydrogen atoms added and optimized by MolProbity. The Clashes column lists the number of clashes within the asymmetric unit, whereas Symm-Clashes lists symmetry-related clashes.

Mol	Chain	Non-H	H(model)	H(added)	Clashes	Symm-Clashes
1	A	3950	0	3884	29	0
1	B	3896	0	3844	35	0
2	A	44	0	0	2	0
2	B	44	0	0	1	0
3	A	36	0	0	1	0
3	B	36	0	0	1	0

Continued on next page...

Continued from previous page...

Mol	Chain	Non-H	H(model)	H(added)	Clashes	Symm-Clashes
4	A	84	0	112	6	0
4	B	78	0	104	4	0
5	A	8	0	12	0	0
6	A	387	0	0	6	0
6	B	379	0	0	8	0
All	All	8942	0	7956	67	0

The all-atom clashscore is defined as the number of clashes found per 1000 atoms (including hydrogen atoms). The all-atom clashscore for this structure is 4.

All (67) close contacts within the same asymmetric unit are listed below, sorted by their clash magnitude.

Atom-1	Atom-2	Interatomic distance (Å)	Clash overlap (Å)
1:B:236[B]:HIS:CE1	6:B:601:HOH:O	2.19	0.95
1:A:158[B]:PHE:CE2	1:A:219:ILE:HD13	2.11	0.85
1:B:439:LEU:O	1:B:440[B]:LYS:HG3	1.76	0.85
1:A:118[A]:MET:HE1	6:A:615:HOH:O	1.76	0.85
1:B:267[B]:GLU:HG2	1:B:440[B]:LYS:HE2	1.59	0.83
1:B:118[A]:MET:HE1	6:B:694:HOH:O	1.82	0.78
1:A:158[B]:PHE:HE2	1:A:219:ILE:HD13	1.50	0.77
1:B:236[B]:HIS:ND1	6:B:601:HOH:O	2.15	0.76
1:A:236[B]:HIS:CE1	6:A:603:HOH:O	2.41	0.74
1:B:97[A]:LYS:HD3	4:B:510[A]:GOL:H11	1.70	0.73
1:A:236[B]:HIS:ND1	6:A:603:HOH:O	2.22	0.71
1:B:437:LEU:HD11	3:B:502:WAA:C19	2.21	0.71
1:A:182[B]:ASP:OD1	6:A:601:HOH:O	2.14	0.66
1:A:120:VAL:HG11	1:A:302:VAL:HG13	1.81	0.62
1:B:118[B]:MET:HE1	6:B:641:HOH:O	1.97	0.62
1:A:367:TRP:HB2	1:A:371:VAL:HG12	1.82	0.60
1:B:102:ILE:O	1:B:236[B]:HIS:HE1	1.85	0.60
1:B:271[B]:GLY:HA2	1:B:440[B]:LYS:HG2	1.84	0.59
1:B:440[A]:LYS:HD3	6:B:778:HOH:O	2.03	0.59
4:B:505:GOL:C3	6:B:866:HOH:O	2.51	0.58
1:A:120:VAL:HG11	1:A:302:VAL:CG1	2.35	0.57
4:B:505:GOL:H32	6:B:866:HOH:O	2.05	0.56
1:A:157:GLY:C	1:A:158[A]:PHE:CD1	2.83	0.56
1:A:437:LEU:HD11	3:A:502:WAA:C19	2.37	0.54
1:B:303:PRO:CG	1:B:416[B]:MET:SD	2.96	0.54
1:A:158[A]:PHE:CE1	1:A:258:ILE:HG12	2.44	0.54
1:A:100:HIS:HE1	4:A:508[B]:GOL:O2	1.92	0.53
1:A:158[B]:PHE:CD2	1:A:219:ILE:HG21	2.43	0.53

Continued on next page...

Continued from previous page...

Atom-1	Atom-2	Interatomic distance (Å)	Clash overlap (Å)
1:B:158[B]:PHE:CD2	1:B:219:ILE:HG21	2.44	0.53
1:B:126:LEU:HD13	1:B:126:LEU:C	2.34	0.53
1:B:157:GLY:C	1:B:158[A]:PHE:CD1	2.88	0.52
1:A:388:HIS:HA	1:A:391:LYS:HD3	1.92	0.51
1:A:157:GLY:C	1:A:158[A]:PHE:CG	2.85	0.51
1:A:268[B]:THR:HB	2:A:501:MI9:C40	2.41	0.51
1:A:137[B]:GLU:OE1	4:A:512:GOL:H12	2.11	0.50
1:A:137[A]:GLU:HB3	4:A:512:GOL:C1	2.40	0.50
1:A:368:GLY:O	1:A:371:VAL:HG13	2.12	0.49
1:B:102:ILE:O	1:B:236[B]:HIS:CE1	2.64	0.49
1:B:158[A]:PHE:CE1	1:B:258:ILE:HG12	2.47	0.49
1:B:267[B]:GLU:HB3	1:B:440[B]:LYS:CD	2.43	0.49
4:A:503:GOL:C3	6:A:907:HOH:O	2.62	0.48
1:A:215[B]:LEU:HD13	1:A:219:ILE:HD12	1.95	0.48
1:B:267[B]:GLU:O	1:B:440[B]:LYS:HD2	2.14	0.48
4:A:503:GOL:H32	6:A:907:HOH:O	2.13	0.47
1:B:148:LEU:HD21	1:B:413:VAL:HG21	1.95	0.47
1:B:416[B]:MET:HE1	6:B:765:HOH:O	2.15	0.47
1:B:150:LEU:HD21	1:B:174:ILE:HG13	1.97	0.46
1:B:439:LEU:O	1:B:440[B]:LYS:CG	2.58	0.46
1:A:136:ASP:CG	1:B:218[B]:LYS:HZ1	2.24	0.46
1:A:137[A]:GLU:HB3	4:A:512:GOL:H12	1.98	0.44
1:B:268[A]:THR:HB	2:B:501:MI9:C40	2.47	0.44
1:B:267[B]:GLU:HB3	1:B:440[B]:LYS:HD3	2.00	0.44
1:B:385[B]:ILE:CD1	4:B:513:GOL:H31	2.49	0.43
1:B:120:VAL:HG11	1:B:302:VAL:HG13	1.99	0.43
1:B:303:PRO:HG2	1:B:416[B]:MET:SD	2.58	0.43
1:B:157:GLY:C	1:B:158[A]:PHE:CG	2.92	0.43
1:B:426:HIS:CD2	1:B:447:LYS:HE3	2.53	0.42
1:A:268[B]:THR:HB	2:A:501:MI9:C41	2.49	0.42
1:B:303:PRO:HG3	1:B:416[B]:MET:SD	2.60	0.42
1:A:267[B]:GLU:HG3	1:A:437:LEU:HD23	2.02	0.42
1:A:75:LEU:HD21	1:A:87[B]:PHE:CE1	2.55	0.42
1:B:81:PHE:HB3	1:B:209:ILE:HG12	2.02	0.41
1:A:126:LEU:C	1:A:126:LEU:HD13	2.46	0.41
1:B:118[A]:MET:SD	1:B:156:CYS:HA	2.60	0.41
1:A:81:PHE:HB3	1:A:209:ILE:HG12	2.02	0.40
1:B:75:LEU:HD21	1:B:87[B]:PHE:CE1	2.56	0.40
1:A:102:ILE:O	1:A:236[B]:HIS:HE1	2.04	0.40

There are no symmetry-related clashes.

5.3 Torsion angles

5.3.1 Protein backbone

In the following table, the Percentiles column shows the percent Ramachandran outliers of the chain as a percentile score with respect to all X-ray entries followed by that with respect to entries of similar resolution.

The Analysed column shows the number of residues for which the backbone conformation was analysed, and the total number of residues.

Mol	Chain	Analysed	Favoured	Allowed	Outliers	Percentiles	
1	A	487/456 (107%)	473 (97%)	14 (3%)	0	100	100
1	B	481/456 (106%)	462 (96%)	17 (4%)	2 (0%)	30	11
All	All	968/912 (106%)	935 (97%)	31 (3%)	2 (0%)	48	21

All (2) Ramachandran outliers are listed below:

Mol	Chain	Res	Type
1	B	266[A]	HIS
1	B	266[B]	HIS

5.3.2 Protein sidechains

In the following table, the Percentiles column shows the percent sidechain outliers of the chain as a percentile score with respect to all X-ray entries followed by that with respect to entries of similar resolution.

The Analysed column shows the number of residues for which the sidechain conformation was analysed, and the total number of residues.

Mol	Chain	Analysed	Rotameric	Outliers	Percentiles	
1	A	431/400 (108%)	427 (99%)	4 (1%)	70	46
1	B	425/400 (106%)	424 (100%)	1 (0%)	87	76
All	All	856/800 (107%)	851 (99%)	5 (1%)	78	58

All (5) residues with a non-rotameric sidechain are listed below:

Mol	Chain	Res	Type
1	A	136	ASP
1	A	148	LEU
1	A	169	GLN
1	A	231	ASP

Continued on next page...

Continued from previous page...

Mol	Chain	Res	Type
1	B	41	LYS

Sometimes sidechains can be flipped to improve hydrogen bonding and reduce clashes. All (4) such sidechains are listed below:

Mol	Chain	Res	Type
1	A	70	ASN
1	A	138	HIS
1	A	204	GLN
1	B	70	ASN

5.3.3 RNA [i](#)

There are no RNA molecules in this entry.

5.4 Non-standard residues in protein, DNA, RNA chains [i](#)

There are no non-standard protein/DNA/RNA residues in this entry.

5.5 Carbohydrates [i](#)

There are no oligosaccharides in this entry.

5.6 Ligand geometry [i](#)

32 ligands are modelled in this entry.

In the following table, the Counts columns list the number of bonds (or angles) for which Mogul statistics could be retrieved, the number of bonds (or angles) that are observed in the model and the number of bonds (or angles) that are defined in the Chemical Component Dictionary. The Link column lists molecule types, if any, to which the group is linked. The Z score for a bond length (or angle) is the number of standard deviations the observed value is removed from the expected value. A bond length (or angle) with $|Z| > 2$ is considered an outlier worth inspection. RMSZ is the root-mean-square of all Z scores of the bond lengths (or angles).

Mol	Type	Chain	Res	Link	Bond lengths			Bond angles		
					Counts	RMSZ	# $ Z > 2$	Counts	RMSZ	# $ Z > 2$
3	WAA	B	502	-	40,40,40	1.25	5 (12%)	54,61,61	1.25	8 (14%)
4	GOL	B	504	-	5,5,5	0.10	0	5,5,5	0.36	0
4	GOL	B	510[A]	-	5,5,5	0.08	0	5,5,5	0.23	0

Mol	Type	Chain	Res	Link	Bond lengths			Bond angles		
					Counts	RMSZ	# Z > 2	Counts	RMSZ	# Z > 2
4	GOL	B	511	-	5,5,5	0.10	0	5,5,5	0.22	0
4	GOL	A	508[B]	-	5,5,5	0.10	0	5,5,5	0.20	0
4	GOL	A	509[B]	-	5,5,5	0.10	0	5,5,5	0.27	0
4	GOL	A	513	-	5,5,5	0.11	0	5,5,5	0.21	0
4	GOL	B	513	-	5,5,5	0.09	0	5,5,5	0.27	0
4	GOL	A	506	-	5,5,5	0.08	0	5,5,5	0.33	0
4	GOL	A	510	-	5,5,5	0.11	0	5,5,5	0.24	0
4	GOL	B	512	-	5,5,5	0.07	0	5,5,5	0.24	0
4	GOL	B	509[A]	-	5,5,5	0.11	0	5,5,5	0.30	0
4	GOL	B	506	-	5,5,5	0.09	0	5,5,5	0.18	0
4	GOL	B	510[B]	-	5,5,5	0.11	0	5,5,5	0.26	0
4	GOL	B	503	-	5,5,5	0.22	0	5,5,5	0.48	0
4	GOL	A	511[A]	-	5,5,5	0.09	0	5,5,5	0.29	0
5	TRS	A	514	-	7,7,7	0.17	0	9,9,9	0.29	0
2	MI9	A	501	1	44,51,51	2.25	16 (36%)	48,86,86	1.25	5 (10%)
4	GOL	A	503	-	5,5,5	0.15	0	5,5,5	0.41	0
4	GOL	A	508[A]	-	5,5,5	0.19	0	5,5,5	0.36	0
4	GOL	A	509[A]	-	5,5,5	0.10	0	5,5,5	0.25	0
4	GOL	B	508	-	5,5,5	0.13	0	5,5,5	0.35	0
2	MI9	B	501	1	44,51,51	2.25	16 (36%)	48,86,86	1.22	4 (8%)
4	GOL	A	507	-	5,5,5	0.09	0	5,5,5	0.23	0
4	GOL	B	507	-	5,5,5	0.20	0	5,5,5	0.48	0
3	WAA	A	502	-	40,40,40	1.15	2 (5%)	54,61,61	1.19	4 (7%)
4	GOL	A	504	-	5,5,5	0.07	0	5,5,5	0.23	0
4	GOL	A	505	-	5,5,5	0.09	0	5,5,5	0.24	0
4	GOL	B	509[B]	-	5,5,5	0.12	0	5,5,5	0.25	0
4	GOL	B	505	-	5,5,5	0.13	0	5,5,5	0.35	0
4	GOL	A	511[B]	-	5,5,5	0.10	0	5,5,5	0.27	0
4	GOL	A	512	-	5,5,5	0.08	0	5,5,5	0.25	0

In the following table, the Chirals column lists the number of chiral outliers, the number of chiral centers analysed, the number of these observed in the model and the number defined in the Chemical Component Dictionary. Similar counts are reported in the Torsion and Rings columns. '-' means no outliers of that kind were identified.

Mol	Type	Chain	Res	Link	Chirals	Torsions	Rings
3	WAA	B	502	-	-	2/22/66/66	0/5/5/5
4	GOL	B	504	-	-	2/4/4/4	-
4	GOL	B	510[A]	-	-	2/4/4/4	-
4	GOL	B	511	-	-	2/4/4/4	-
4	GOL	A	508[B]	-	-	3/4/4/4	-

Continued on next page...

Continued from previous page...

Mol	Type	Chain	Res	Link	Chirals	Torsions	Rings
4	GOL	A	509[B]	-	-	3/4/4/4	-
4	GOL	A	513	-	-	4/4/4/4	-
4	GOL	B	513	-	-	1/4/4/4	-
4	GOL	A	506	-	-	2/4/4/4	-
4	GOL	A	510	-	-	2/4/4/4	-
4	GOL	B	512	-	-	0/4/4/4	-
4	GOL	B	509[A]	-	-	0/4/4/4	-
4	GOL	B	506	-	-	0/4/4/4	-
4	GOL	B	510[B]	-	-	3/4/4/4	-
4	GOL	B	503	-	-	2/4/4/4	-
4	GOL	A	511[A]	-	-	0/4/4/4	-
5	TRS	A	514	-	-	3/9/9/9	-
2	MI9	A	501	1	1/1/3/7	2/14/62/62	-
4	GOL	A	503	-	-	2/4/4/4	-
4	GOL	A	508[A]	-	-	2/4/4/4	-
4	GOL	A	509[A]	-	-	4/4/4/4	-
4	GOL	B	508	-	-	2/4/4/4	-
2	MI9	B	501	1	1/1/3/7	2/14/62/62	-
4	GOL	A	507	-	-	4/4/4/4	-
4	GOL	B	507	-	-	1/4/4/4	-
3	WAA	A	502	-	-	1/22/66/66	0/5/5/5
4	GOL	A	504	-	-	2/4/4/4	-
4	GOL	A	505	-	-	1/4/4/4	-
4	GOL	B	509[B]	-	-	0/4/4/4	-
4	GOL	B	505	-	-	2/4/4/4	-
4	GOL	A	511[B]	-	-	0/4/4/4	-
4	GOL	A	512	-	-	4/4/4/4	-

All (39) bond length outliers are listed below:

Mol	Chain	Res	Type	Atoms	Z	Observed(Å)	Ideal(Å)
2	B	501	MI9	C22-C23	5.23	1.49	1.38
2	A	501	MI9	C03-N14	-5.19	1.32	1.38
2	B	501	MI9	C04-C05	5.10	1.48	1.38
2	B	501	MI9	C29-C30	4.62	1.47	1.38
2	A	501	MI9	C04-C05	4.58	1.47	1.38
2	A	501	MI9	C29-C30	4.57	1.47	1.38
2	A	501	MI9	C04-C03	4.18	1.48	1.39

Continued on next page...

Continued from previous page...

Mol	Chain	Res	Type	Atoms	Z	Observed(Å)	Ideal(Å)
2	B	501	MI9	C16-C17	4.11	1.48	1.39
2	A	501	MI9	C22-C23	4.10	1.46	1.38
2	B	501	MI9	C16-C15	4.10	1.46	1.38
2	A	501	MI9	C16-C15	4.01	1.46	1.38
2	B	501	MI9	C04-C03	3.63	1.47	1.39
2	B	501	MI9	C29-C28	3.63	1.47	1.39
2	A	501	MI9	C29-C28	3.38	1.46	1.39
2	B	501	MI9	C15-C40	-3.21	1.39	1.45
2	A	501	MI9	C28-C27	-3.17	1.39	1.45
2	A	501	MI9	C16-C17	3.16	1.46	1.39
2	B	501	MI9	C22-C21	3.09	1.46	1.39
2	B	501	MI9	C28-C27	-2.95	1.40	1.45
2	A	501	MI9	C05-C06	-2.95	1.39	1.45
3	B	502	WAA	C7-C14	-2.92	1.51	1.56
2	B	501	MI9	C21-C20	-2.71	1.39	1.44
3	B	502	WAA	CD2-CG	-2.70	1.39	1.44
2	B	501	MI9	C03-N14	-2.69	1.35	1.38
2	B	501	MI9	C28-N24	-2.69	1.35	1.38
2	A	501	MI9	C30-C08	-2.61	1.40	1.45
3	A	502	WAA	C7-C14	-2.58	1.52	1.56
2	A	501	MI9	C03-C02	-2.58	1.39	1.44
2	B	501	MI9	C03-C02	-2.54	1.39	1.44
2	A	501	MI9	C22-C21	2.46	1.44	1.39
3	B	502	WAA	C2-C9	-2.42	1.52	1.56
3	A	502	WAA	CD2-CG	-2.40	1.40	1.44
2	A	501	MI9	C23-C25	-2.32	1.39	1.44
3	B	502	WAA	C7-C9	-2.28	1.53	1.56
2	A	501	MI9	C15-C40	-2.18	1.41	1.45
3	B	502	WAA	C15-C14	-2.18	1.50	1.53
2	B	501	MI9	C33-C34	2.17	1.55	1.50
2	A	501	MI9	C28-N24	-2.17	1.36	1.38
2	B	501	MI9	C23-C25	-2.04	1.40	1.44

All (21) bond angle outliers are listed below:

Mol	Chain	Res	Type	Atoms	Z	Observed(°)	Ideal(°)
2	A	501	MI9	C32-C27-C28	3.32	130.49	124.70
3	B	502	WAA	C6-C7-C14	-3.14	104.71	109.17
3	A	502	WAA	C6-C7-C14	-3.04	104.86	109.17
3	A	502	WAA	CZ2-CE2-CD2	-2.95	119.33	122.19
3	A	502	WAA	C15-C16-C17	-2.75	107.76	112.47
2	B	501	MI9	C30-C08-C06	-2.69	103.57	107.11

Continued on next page...

Continued from previous page...

Mol	Chain	Res	Type	Atoms	Z	Observed(°)	Ideal(°)
3	B	502	WAA	C14-C12-C11	2.67	123.05	117.46
2	B	501	MI9	O12-C11-C10	-2.60	114.84	123.09
3	B	502	WAA	C15-C16-C17	-2.55	108.10	112.47
3	B	502	WAA	C5-C6-C7	-2.47	110.29	113.19
2	A	501	MI9	C38-C20-C21	2.45	128.28	124.91
3	A	502	WAA	C14-C12-C11	2.39	122.47	117.46
2	B	501	MI9	C41-C40-C15	2.37	127.87	124.79
2	A	501	MI9	C26-C25-C23	2.21	128.48	125.03
3	B	502	WAA	C9-C10-C11	-2.10	109.14	112.99
2	A	501	MI9	C28-C27-C25	-2.08	103.86	106.89
2	A	501	MI9	C03-C02-C40	-2.07	104.80	106.98
3	B	502	WAA	C5-C4-C2	-2.05	109.97	113.16
3	B	502	WAA	CZ2-CE2-CD2	-2.03	120.23	122.19
2	B	501	MI9	C33-C32-C27	-2.02	106.96	112.53
3	B	502	WAA	CE3-CD2-CE2	2.00	120.92	118.84

All (2) chirality outliers are listed below:

Mol	Chain	Res	Type	Atom
2	A	501	MI9	N31
2	B	501	MI9	N31

All (60) torsion outliers are listed below:

Mol	Chain	Res	Type	Atoms
4	A	506	GOL	C1-C2-C3-O3
4	A	507	GOL	O1-C1-C2-O2
4	A	507	GOL	O1-C1-C2-C3
4	A	507	GOL	C1-C2-C3-O3
4	A	508[B]	GOL	O1-C1-C2-C3
4	A	509[A]	GOL	O1-C1-C2-C3
4	A	509[A]	GOL	C1-C2-C3-O3
4	A	512	GOL	O1-C1-C2-O2
4	A	512	GOL	O1-C1-C2-C3
4	A	512	GOL	C1-C2-C3-O3
4	A	512	GOL	O2-C2-C3-O3
4	A	513	GOL	O1-C1-C2-C3
4	A	513	GOL	C1-C2-C3-O3
4	B	503	GOL	O1-C1-C2-C3
4	B	504	GOL	C1-C2-C3-O3
4	B	508	GOL	C1-C2-C3-O3
4	B	510[A]	GOL	C1-C2-C3-O3

Continued on next page...

Continued from previous page...

Mol	Chain	Res	Type	Atoms
4	B	510[A]	GOL	O2-C2-C3-O3
4	B	510[B]	GOL	C1-C2-C3-O3
4	B	511	GOL	C1-C2-C3-O3
4	A	508[B]	GOL	O1-C1-C2-O2
4	A	513	GOL	O1-C1-C2-O2
4	A	503	GOL	C1-C2-C3-O3
4	A	504	GOL	O1-C1-C2-C3
4	A	508[A]	GOL	O1-C1-C2-C3
4	A	508[B]	GOL	C1-C2-C3-O3
4	A	509[B]	GOL	O1-C1-C2-C3
4	A	510	GOL	C1-C2-C3-O3
4	B	505	GOL	C1-C2-C3-O3
4	B	507	GOL	O1-C1-C2-C3
4	B	510[B]	GOL	O1-C1-C2-C3
4	A	504	GOL	O1-C1-C2-O2
4	A	506	GOL	O2-C2-C3-O3
4	A	507	GOL	O2-C2-C3-O3
4	A	509[A]	GOL	O2-C2-C3-O3
4	A	513	GOL	O2-C2-C3-O3
4	B	504	GOL	O2-C2-C3-O3
4	B	511	GOL	O2-C2-C3-O3
4	A	503	GOL	O2-C2-C3-O3
4	A	510	GOL	O2-C2-C3-O3
4	B	503	GOL	O1-C1-C2-O2
4	A	505	GOL	O1-C1-C2-O2
4	A	509[A]	GOL	O1-C1-C2-O2
4	B	508	GOL	O2-C2-C3-O3
4	B	513	GOL	O1-C1-C2-O2
5	A	514	TRS	C3-C-C1-O1
5	A	514	TRS	N-C-C1-O1
4	A	508[A]	GOL	O1-C1-C2-O2
4	A	509[B]	GOL	O1-C1-C2-O2
4	B	505	GOL	O2-C2-C3-O3
4	B	510[B]	GOL	O2-C2-C3-O3
5	A	514	TRS	C2-C-C1-O1
3	A	502	WAA	N-C1-C2-C3
3	B	502	WAA	O1-C1-C2-C3
3	B	502	WAA	N-C1-C2-C3
2	A	501	MI9	C32-C33-C34-O36
2	B	501	MI9	C32-C33-C34-O35
2	A	501	MI9	C32-C33-C34-O35
4	A	509[B]	GOL	O2-C2-C3-O3

Continued on next page...

Continued from previous page...

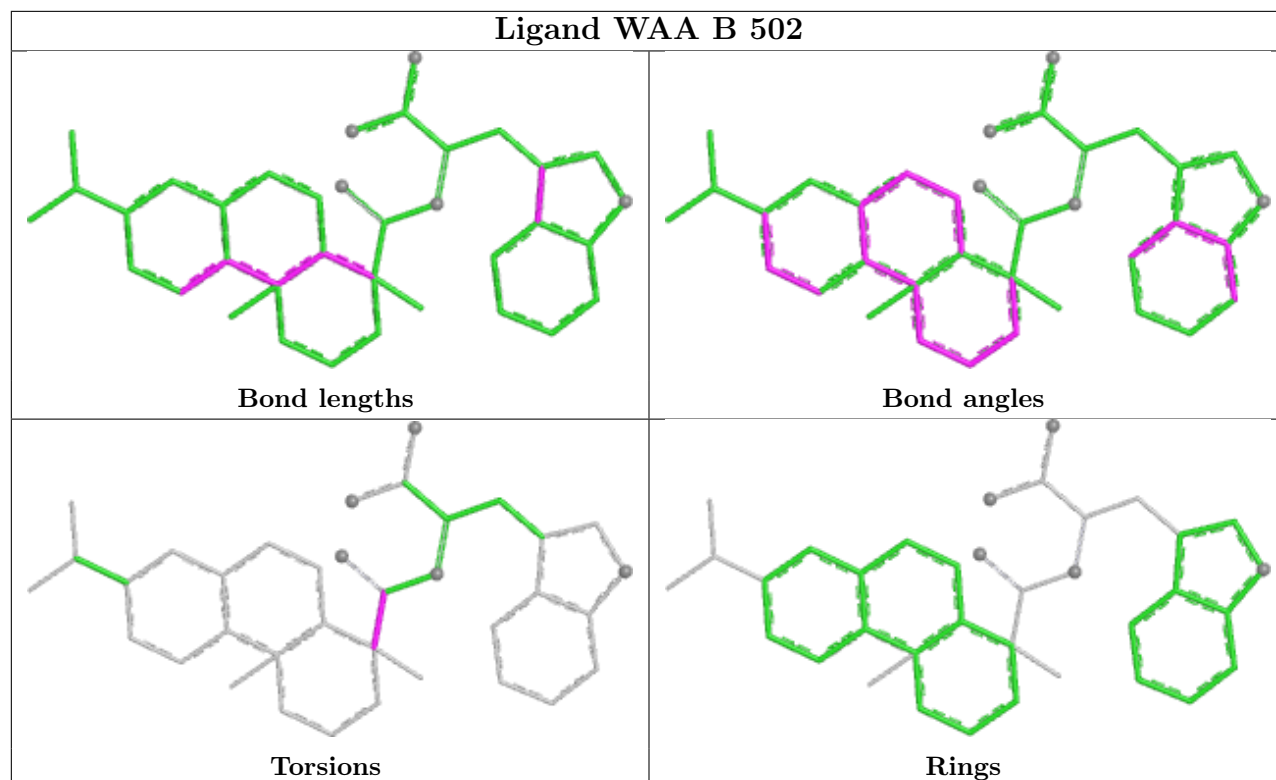
Mol	Chain	Res	Type	Atoms
2	B	501	MI9	C32-C33-C34-O36

There are no ring outliers.

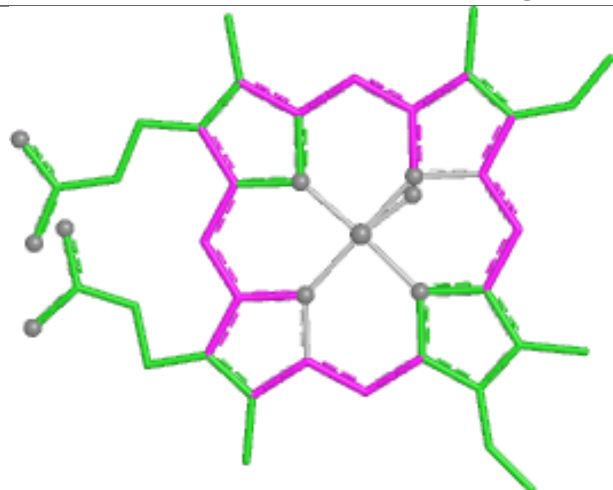
10 monomers are involved in 15 short contacts:

Mol	Chain	Res	Type	Clashes	Symm-Clashes
3	B	502	WAA	1	0
4	B	510[A]	GOL	1	0
4	A	508[B]	GOL	1	0
4	B	513	GOL	1	0
2	A	501	MI9	2	0
4	A	503	GOL	2	0
2	B	501	MI9	1	0
3	A	502	WAA	1	0
4	B	505	GOL	2	0
4	A	512	GOL	3	0

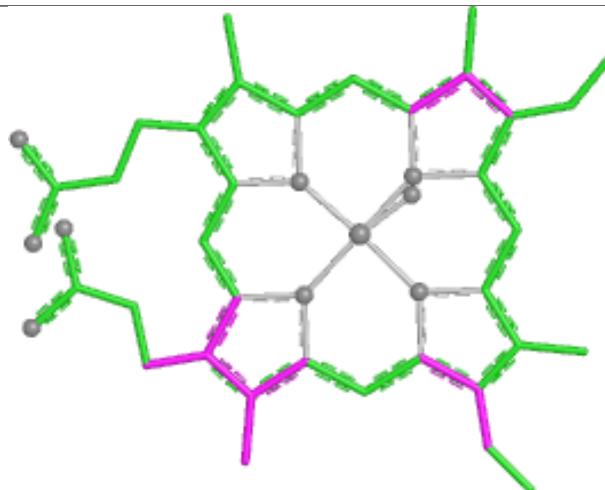
The following is a two-dimensional graphical depiction of Mogul quality analysis of bond lengths, bond angles, torsion angles, and ring geometry for all instances of the Ligand of Interest. In addition, ligands with molecular weight > 250 and outliers as shown on the validation Tables will also be included. For torsion angles, if less than 5% of the Mogul distribution of torsion angles is within 10 degrees of the torsion angle in question, then that torsion angle is considered an outlier. Any bond that is central to one or more torsion angles identified as an outlier by Mogul will be highlighted in the graph. For rings, the root-mean-square deviation (RMSD) between the ring in question and similar rings identified by Mogul is calculated over all ring torsion angles. If the average RMSD is greater than 60 degrees and the minimal RMSD between the ring in question and any Mogul-identified rings is also greater than 60 degrees, then that ring is considered an outlier. The outliers are highlighted in purple. The color gray indicates Mogul did not find sufficient equivalents in the CSD to analyse the geometry.



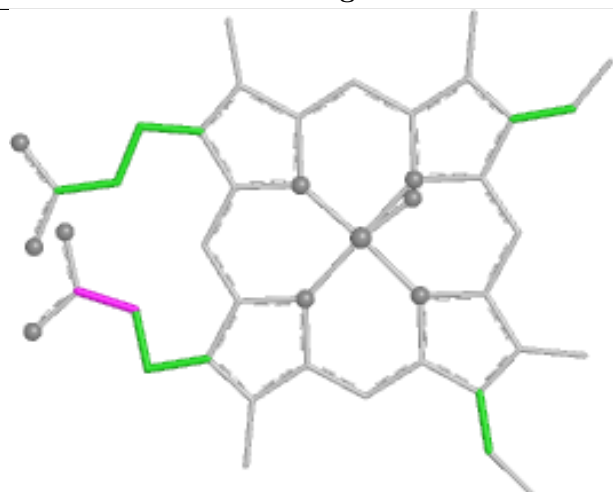
Ligand MI9 A 501



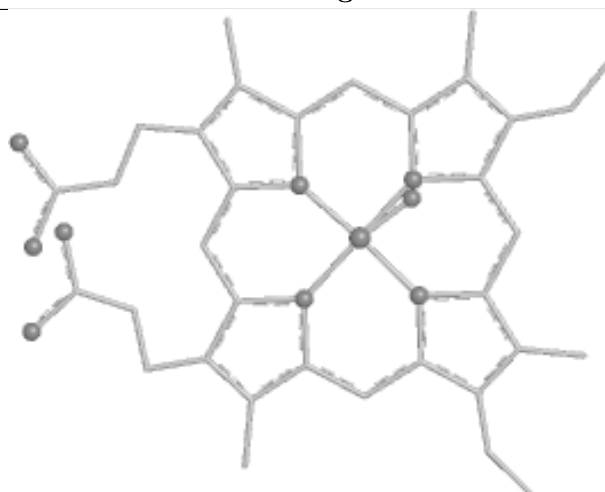
Bond lengths



Bond angles

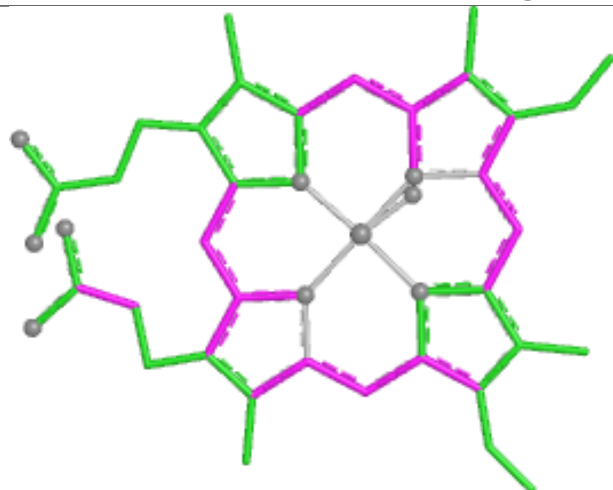


Torsions

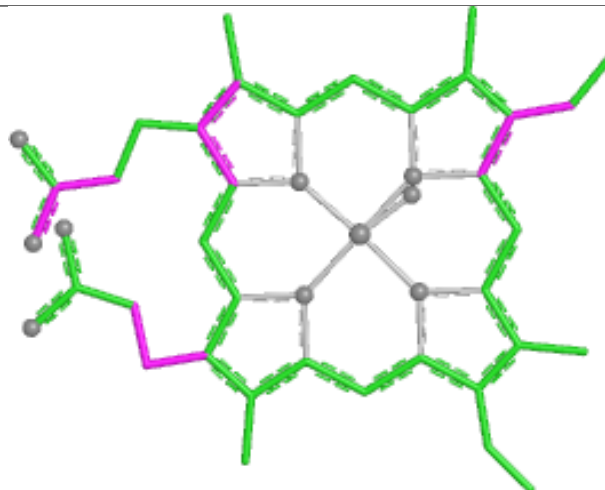


Rings

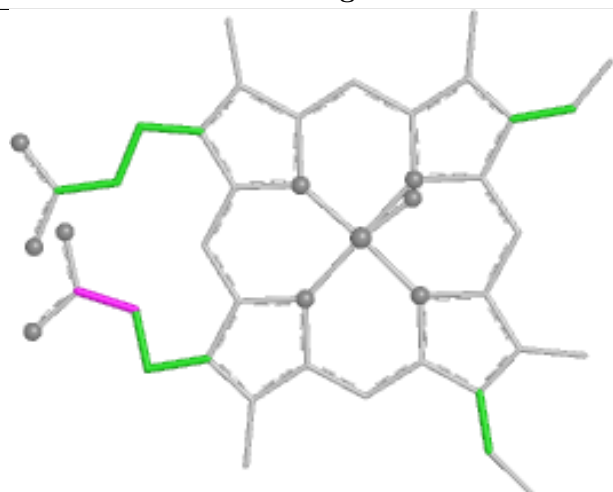
Ligand MI9 B 501



Bond lengths



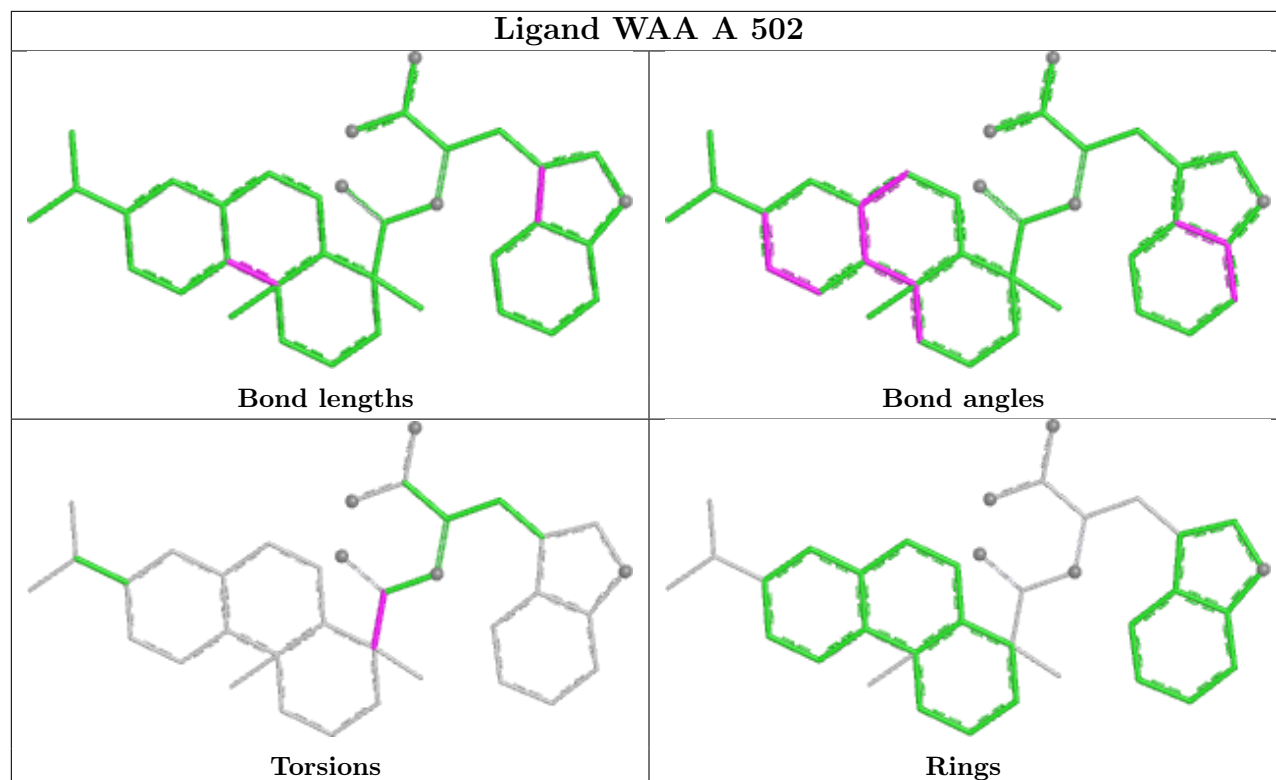
Bond angles



Torsions



Rings



5.7 Other polymers [i](#)

There are no such residues in this entry.

5.8 Polymer linkage issues [i](#)

There are no chain breaks in this entry.

6 Fit of model and data [i](#)

6.1 Protein, DNA and RNA chains [i](#)

In the following table, the column labelled ‘#RSRZ > 2’ contains the number (and percentage) of RSRZ outliers, followed by percent RSRZ outliers for the chain as percentile scores relative to all X-ray entries and entries of similar resolution. The OWAB column contains the minimum, median, 95th percentile and maximum values of the occupancy-weighted average B-factor per residue. The column labelled ‘Q < 0.9’ lists the number of (and percentage) of residues with an average occupancy less than 0.9.

Mol	Chain	Analysed	<RSRZ>	#RSRZ>2	OWAB(Å ²)	Q<0.9
1	A	455/456 (99%)	-0.31	4 (0%) 81 84	7, 21, 49, 84	32 (7%)
1	B	455/456 (99%)	-0.26	9 (1%) 65 67	8, 22, 50, 91	26 (5%)
All	All	910/912 (99%)	-0.28	13 (1%) 73 77	7, 22, 50, 91	58 (6%)

All (13) RSRZ outliers are listed below:

Mol	Chain	Res	Type	RSRZ
1	B	225	ALA	3.2
1	B	2	ILE	3.1
1	A	225	ALA	3.1
1	A	1	THR	3.0
1	B	455	LEU	2.7
1	A	2	ILE	2.6
1	A	230	SER	2.4
1	B	230	SER	2.2
1	B	215	LEU	2.1
1	B	197	ALA	2.1
1	B	1	THR	2.1
1	B	236[A]	HIS	2.1
1	B	210	LYS	2.0

6.2 Non-standard residues in protein, DNA, RNA chains [i](#)

There are no non-standard protein/DNA/RNA residues in this entry.

6.3 Carbohydrates [i](#)

There are no oligosaccharides in this entry.

6.4 Ligands

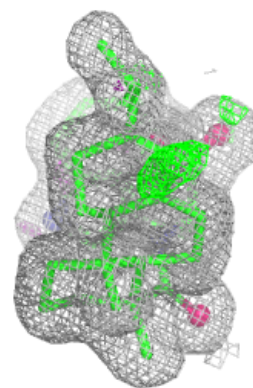
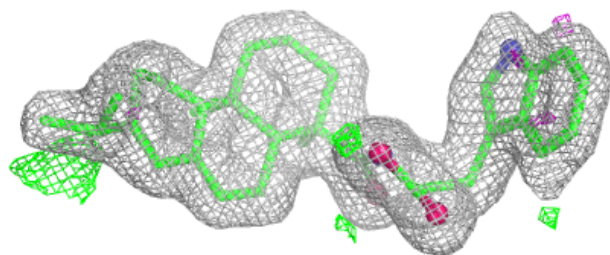
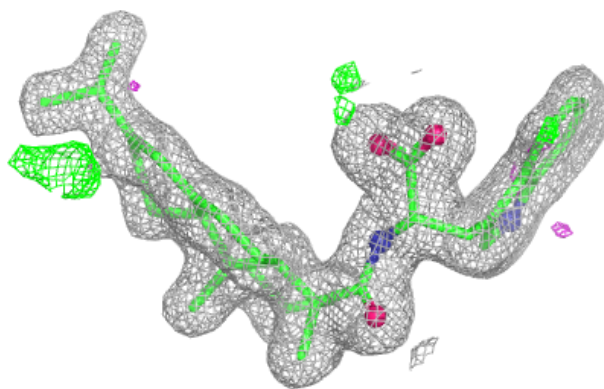
In the following table, the Atoms column lists the number of modelled atoms in the group and the number defined in the chemical component dictionary. The B-factors column lists the minimum, median, 95th percentile and maximum values of B factors of atoms in the group. The column labelled 'Q< 0.9' lists the number of atoms with occupancy less than 0.9.

Mol	Type	Chain	Res	Atoms	RSCC	RSR	B-factors(Å ²)	Q<0.9
4	GOL	B	509[A]	6/6	0.84	0.15	37,51,53,56	6
4	GOL	B	509[B]	6/6	0.84	0.15	32,35,36,37	6
4	GOL	B	506	6/6	0.85	0.16	35,56,69,76	0
4	GOL	B	505	6/6	0.86	0.13	46,58,58,63	0
4	GOL	A	510	6/6	0.86	0.13	53,66,69,73	0
4	GOL	A	503	6/6	0.87	0.14	44,51,61,64	0
4	GOL	A	508[B]	6/6	0.89	0.19	12,16,17,18	6
4	GOL	A	508[A]	6/6	0.89	0.19	23,47,74,89	6
4	GOL	B	511	6/6	0.89	0.13	51,57,68,75	0
4	GOL	A	504	6/6	0.90	0.09	47,52,57,59	0
4	GOL	A	509[A]	6/6	0.90	0.13	44,52,56,73	6
4	GOL	A	509[B]	6/6	0.90	0.13	22,32,35,40	6
4	GOL	B	507	6/6	0.91	0.11	47,50,59,69	0
4	GOL	A	512	6/6	0.91	0.11	42,57,58,70	0
4	GOL	A	507	6/6	0.91	0.12	51,59,65,69	0
4	GOL	B	510[A]	6/6	0.91	0.12	34,38,42,49	6
4	GOL	B	510[B]	6/6	0.91	0.12	43,78,87,91	6
4	GOL	A	505	6/6	0.91	0.11	43,57,60,78	0
4	GOL	A	506	6/6	0.92	0.10	47,48,56,66	0
4	GOL	A	511[A]	6/6	0.92	0.12	41,42,47,62	6
4	GOL	A	511[B]	6/6	0.92	0.12	57,81,83,87	6
4	GOL	B	512	6/6	0.92	0.13	24,48,65,69	0
4	GOL	B	513	6/6	0.92	0.11	45,51,57,57	0
4	GOL	B	504	6/6	0.93	0.10	40,58,76,78	0
4	GOL	B	503	6/6	0.94	0.10	25,46,54,54	0
4	GOL	A	513	6/6	0.94	0.11	25,50,58,61	0
5	TRS	A	514	8/8	0.94	0.09	36,54,65,72	0
4	GOL	B	508	6/6	0.95	0.10	27,38,52,73	0
3	WAA	A	502	36/36	0.96	0.07	21,26,32,37	0
3	WAA	B	502	36/36	0.96	0.08	21,27,45,48	0
2	MI9	A	501	44/44	1.00	0.04	13,15,19,26	0
2	MI9	B	501	44/44	1.00	0.04	11,15,18,26	0

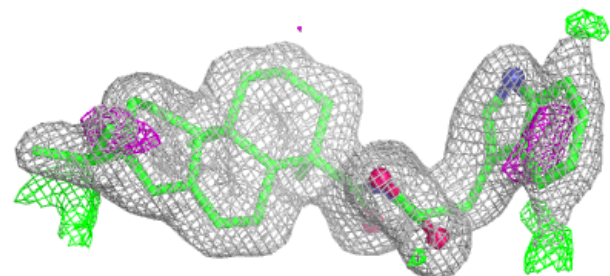
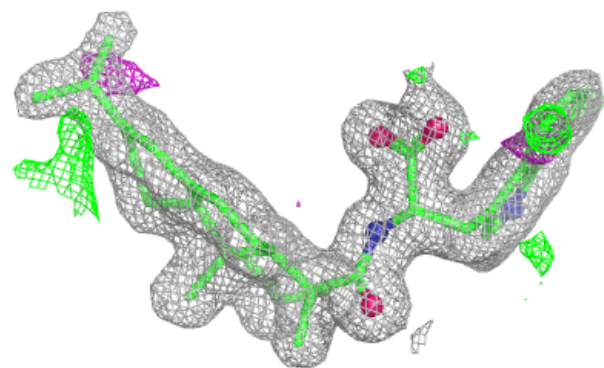
The following is a graphical depiction of the model fit to experimental electron density of all instances of the Ligand of Interest. In addition, ligands with molecular weight > 250 and outliers as shown on the geometry validation Tables will also be included. Each fit is shown from different orientation to approximate a three-dimensional view.

Electron density around WAA A 502:

$2mF_o-DF_c$ (at 0.7 rmsd) in gray
 mF_o-DF_c (at 3 rmsd) in purple (negative)
and green (positive)

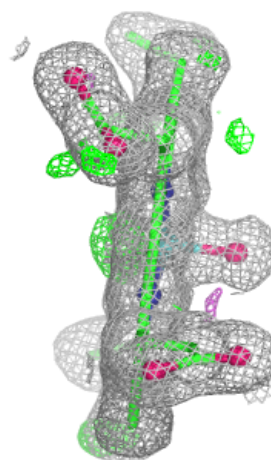
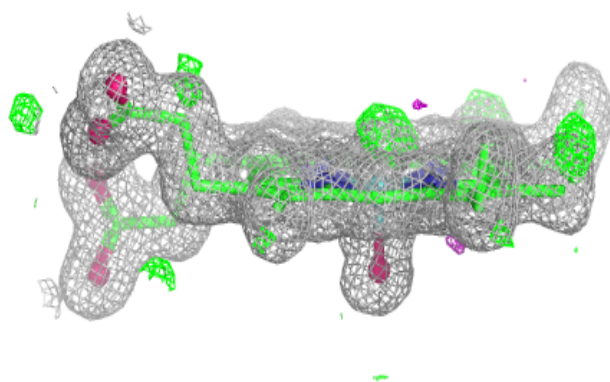
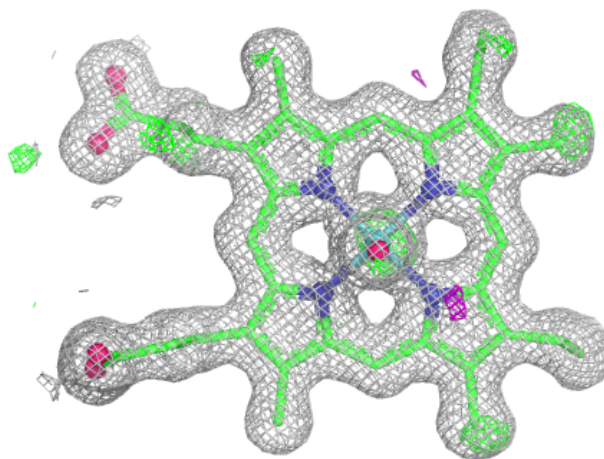
**Electron density around WAA B 502:**

$2mF_o-DF_c$ (at 0.7 rmsd) in gray
 mF_o-DF_c (at 3 rmsd) in purple (negative)
and green (positive)



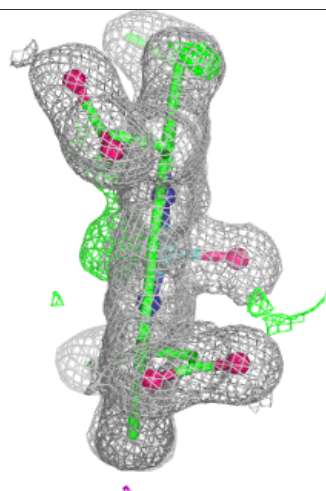
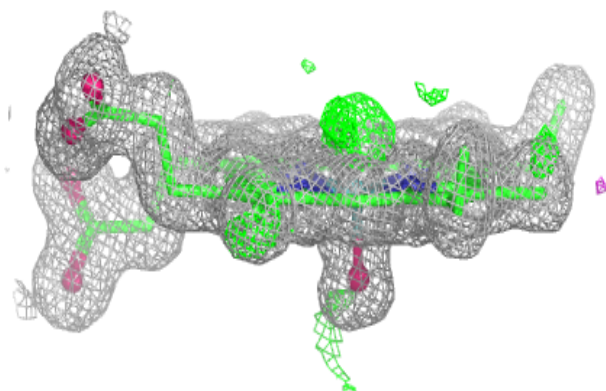
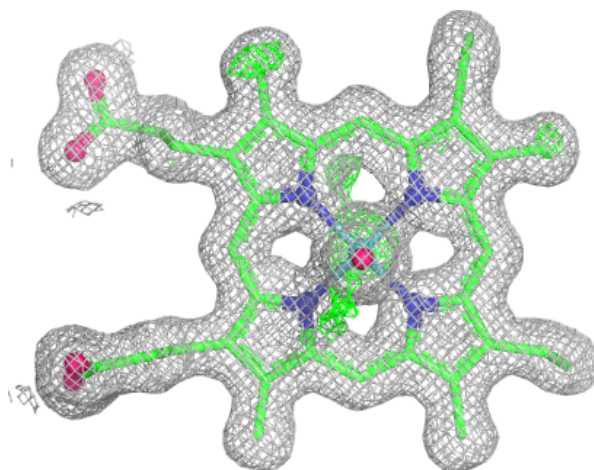
Electron density around MI9 A 501:

$2mF_o-DF_c$ (at 0.7 rmsd) in gray
 mF_o-DF_c (at 3 rmsd) in purple (negative)
and green (positive)



Electron density around MI9 B 501:

$2mF_o-DF_c$ (at 0.7 rmsd) in gray
 mF_o-DF_c (at 3 rmsd) in purple (negative)
and green (positive)



6.5 Other polymers [i](#)

There are no such residues in this entry.